

Trinity Co Bdry Line 102a

~~No 4~~

Bdy. Line between
Trinity
&
Polk Co's.

Examined, approved and
applied, Feb. 10, 1888.

Abstract Corrected
Febry 13/88.

Beaumont.

The State of Texas
Counties of Polk & Trinity - Field notes
of the division
line between the Counties of Polk and
Trinity.

Beginning at a living Mulberry tree on the East bank of the Trinity River at a point bearing from the mouth of Kickapoo creek about N. 56° W. 10.000 vrs dist. and S. 39° E. 730 vrs from where the Division line between the two A. M. de Lejarza Leagues touches the East bank of the said Trinity River. Said Mulberry tree is marked on its Eastern side thus ^PX and on its Western side ^TX from which a 14 inch Ash ^Pmarked X vrs S. 64° E. 12 vrs and a 30 inch Cottonwood ^Tmarked X vrs N. 31° E. 2 1/4 vrs and an 8 inch Sycamore ^Tmarked, POLK vrs S. 4° W. 4 1/2 vrs
Thence N. 49° E. at 4,100 vrs cross Brushy creek. at 17,000 vrs cross Kickapoo creek. at 33,450 cross the Trinity & Sabine R. R. 320 vrs E. of its 28 mile post, at 40,040 the mouth of Bull creek, at which point a Green Mulberry post 8 inches square was set in the ground ^Pmarked on the East side ^PX, and on the West ^Tmarked X from which Sweet Gum standing on the East bank marked ^PX and a Birch marked ^TX.

Thence N. $40^{\circ} 30'$ E. at 2700 vrs cross the
 gent creek, at 17,190 vrs the mouth of Alabama
 creek. At this point a pitch pine post six
 feet long was set in the ground three feet,
 marked $\overset{P}{X}$ $\overset{T}{X}$, thus completing said line

This line is marked with four hacks on
 the trees, and at the end of every mile an earth
 or rock mound was erected two feet high
 and trees notched to correspond with the num-
 ber of the miles. This line crosses the lines of
 the surveys named below as follow, to wit:

The N. boundary line of the Polly Ryan, 600
 vrs S. 75° W. of its N. E. corner, the E. line of
 the M. Purvis 320 acres 335 vrs N. of its S. E.
 corner, the N. line of J. B. Gaines 547 vrs S.
 of N. W. corner, the S. line of the N. Charles Brin-
 ingham 134 vrs E. of its S. W. corner, the
 N. line of the Houston County School land 790
 vrs S. of its N. W. corner, the S. line of the
 J. Jones 357 vrs East of its S. W. corner,
 and the N. line of the Geo. Bondies 300 vrs
 N. of its N. E. corner. The mouth of Bull
 creek is situated 1430 vrs N. and 5-10 W. of
 the S. E. corner of the Juan Barmona
 League survey. The line from this point
 to the mouth of Alabama creek crosses the
 N. line of the B. Ricerra League 1934 vrs
 E. of its N. W. corner, the E. line of the

Jesse James 312 vrs N. of its S. E. corner,
The (reputed) N. line of the J. M. Dean League 1550
vrs N. of its N. E. corner, The N. line of the J.
A. Lee 664 N. of his most Southern S. N. corner,
and The N. line of the same 265 vrs N. of James
Hoods N. N. corner; continuing same course
N. $40^{\circ} 30'$ E. 740 vrs to mouth of Alabama
Creek.

W. H. St. Dennington County Surveyor of
Trinity County, and W. H. Matthews County Sur-
veyor of Polk County do hereby certify that we were
together upon the ground and made the fore-
going survey according to law with duly
qualified chain carriers and, that all descrip-
tions and other statements set forth in the
above field notes are true and correct.

W. H. Dennington
County Surveyor Trinity County
W. H. Matthews
Surveyor Polk County

The State of Texas, County of Trinity.

J. K. Stokes, Clerk of the County
Court within and for said County, do hereby certify that
the foregoing instrument was filed in my office for record
at 11 o'clock, a M., on the 17 day of January
1888, and was correctly recorded on the 17 day of
January 1888, in deed record book 11 on page 545 to 547

Given under my hand and Seal of Office

This 17 day of January, 1888

J. K. Stokes

Clerk of County Court, Trinity County, Texas.

By R. H. Stokes

Dms

3

Filed for record
Jan'y. 17th 1888.
J. K. Stokes
Clerk
By R. G. Stokes
Clerk

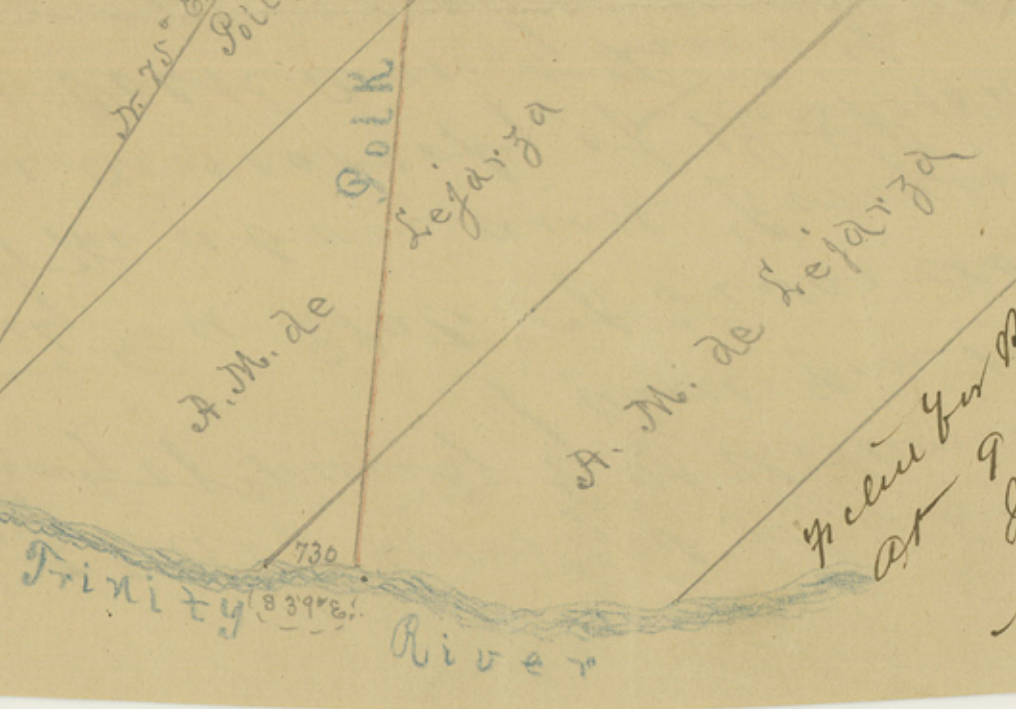
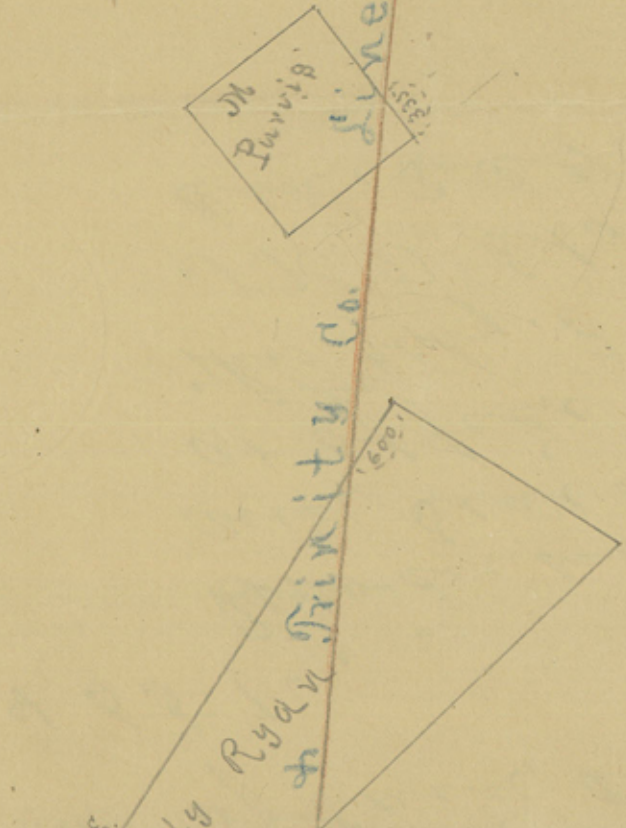
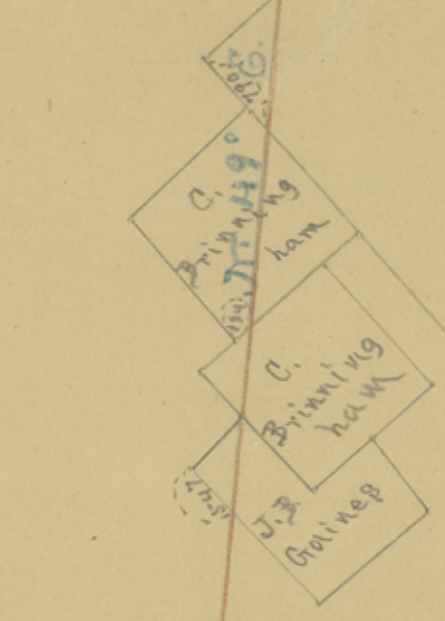
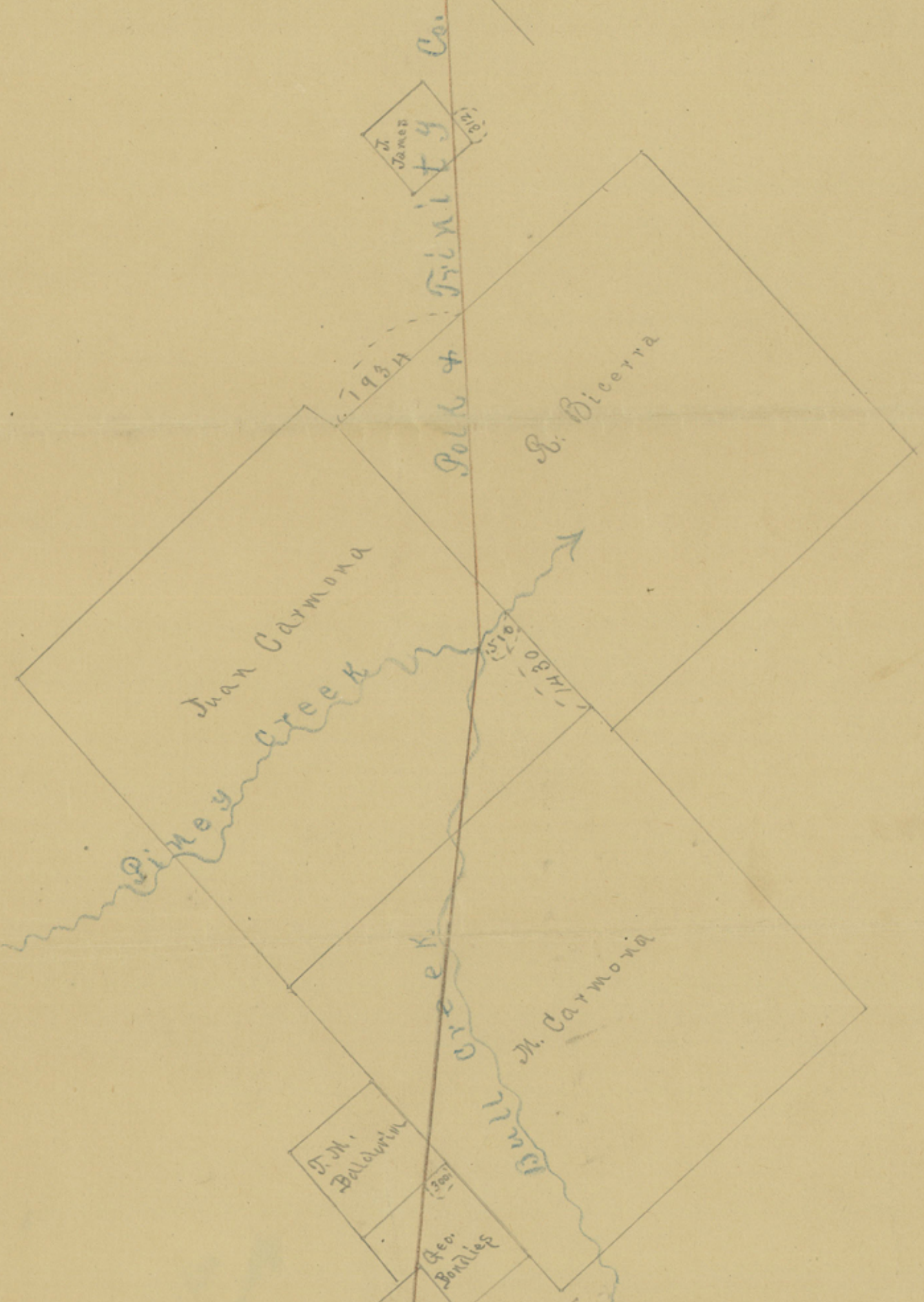
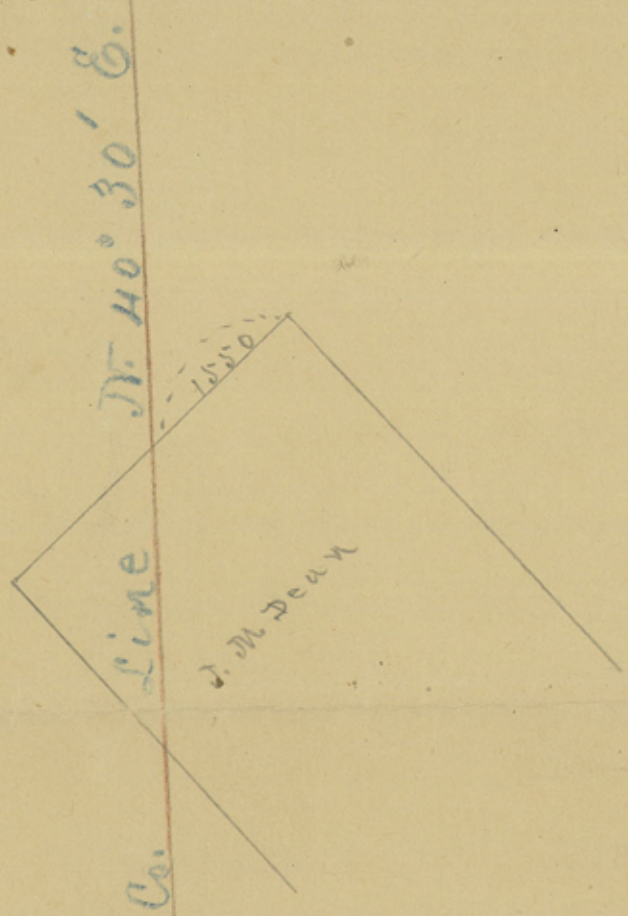
Filed in the General Land
Office Feb'y 6th 1888.
J. McHenry
Chief Clerk.

The State of Texas by J. K. Stokes
Clerk of County Clerk of the County
Court in & for Trinity Co. Texas do
hereby certify that that the above & forego-
ing is a true & correct copy of the
of this notes and sketch of the County
Line between Polk and Trinity Coun-
ties Texas - from the Deeds records
of said County Book I Pages
545, 546 & 547.

Given under my hand and
Seal of said Court this Feb'y,
3rd 20 1888.

J. K. Stokes
Clerk of Trinity Co. Texas

cont. 59492



7 miles from Reno, Nev. 200/1888
 at 9 o'clock a.m.
 J. P. S. 10715
 C. L. C. 4401

PR

The State of Texas & J. K. D. Stokes Clerk
 County of Trinity of the County Court in
 Trinity State of Texas do hereby certify
 that the above and foregoing is a true
 and correct copy of the Sketch of the Trinity
 Records of said County Book I Pages
 556 & 557.

Given under my hand
 and Seal of said Court
 at office in Houston Texas
 this 7th day of July 1888,
 J. K. D. Stokes
 Clerk. C. C. Co. Texas

Filed in the Gen. Rec.
 Feb. 6th 1888
 R. B. Kelley
 Chief Clerk

Trinity Co. Bk. 4
 4
 Line 102a

55993

P