

TRACT	GRANTEE	WEBB ACRES	ZAPATA ACRES
Porcion 53	L. Sanchez	5284.0	34.0
Porcion 54	B. Benavides	4920.0	389.0
Porcion 55	C. of Laredo	4538.0	780.0
Porcion 56	J.A. Treviño	4158.0	1160.0
Porcion 57	J.M. de la Garza	3788.0	1530.0
Porcion 58	M. Garza	3424.0	1894.0
Porcion 59	P. Mendiola	2298.0	3020.0
Jaral-Perla	J. V. Borrego	914.0	4874.10
Abagados	"	9,608.0	8104.0
Ranchito	"	5,880.0	843.0
Barrocito	"	43.0	11,377.0
D. Benavides	"	1,073.0	783.0
Sur. No. 9	H. & G. N. Ry	163.0	477.0
Sur. 125	S. K. & K	591.0	49.0
Sur. 126	S. K. & K	52.0	588.0
Sur. 309	J. J. T. Wright	938.0	28.0
Sur. 258	T. C. Ry	235.0	200.0
Las Animas	F. Peña	4662.0	96.0
Sur. 582	S. 37526	550.0	96.0
Sur. 106	Morris & Cummings	214.5	425.5
Sur. 102	"	26.0	614.0

Jim Hogg
County

State of Texas
County of Webb

I, E. J. Foster, Surveyor of Webb Co., Texas, do hereby certify that the above and foregoing Map showing the division line between Webb and Zapata Counties is true and correct just as I found it on the ground from actual survey. That posts were set at each lineal mile surveyed and concrete monuments placed as shown by Map.

Witness my hand at my office, Laredo, Webb Co., Texas, this the 17th day of February 1921.

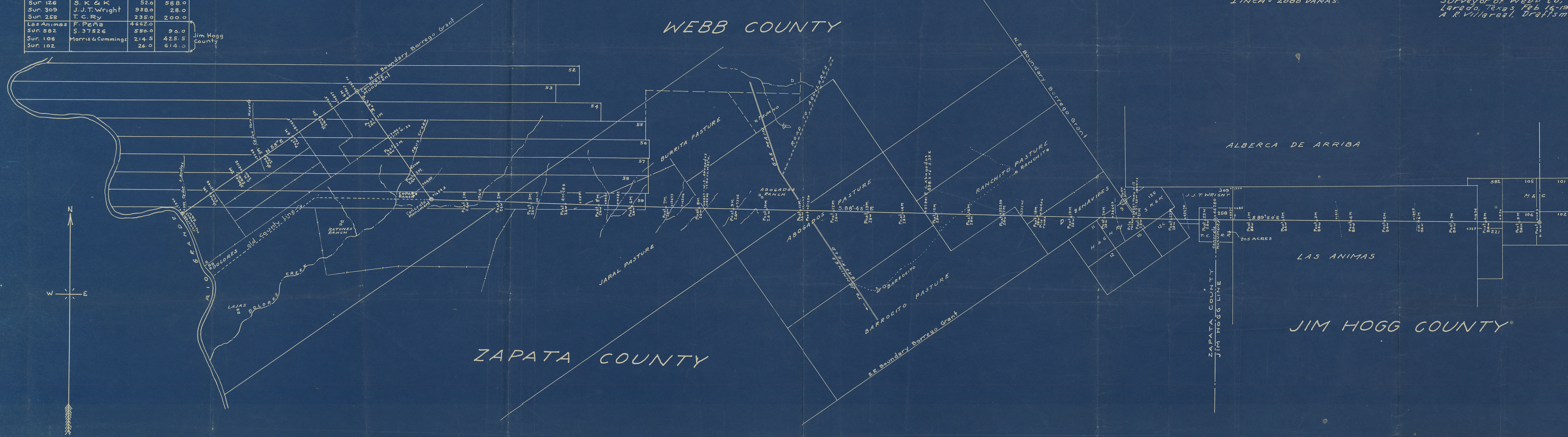
E. J. Foster
County Surveyor of Webb Co., Texas

MAP
SHOWING DIVISION LINE BETWEEN
WEBB ZAPATA & JIM HOGG COUNTIES.

SURVEYED JAN-FEBRUARY 1921

SCALE -
1 INCH = 2000 VARAS.

E. J. Foster, County
Surveyor of Webb Co., Texas
Laredo, Texas, Feb 16-1921
A. R. Villareal, Draftsman



Webb Co. Bary Line 36

Webb - Gogata
County Line

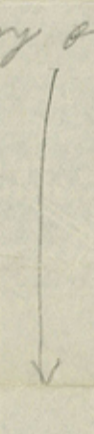
Filed Oct. 23rd, 1935

J.H. Walker, Com.
C.F. Blumberg, Clk.

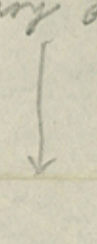
See F.W. - Sec. - filed
October 14, 1935.

Foot line

Foot line



Foot line



Foot line

Foot line

Vertical text on the right side of the page, possibly a list or index, including numbers and names.

Vertical text on the left side of the page, possibly a list or index, including numbers and names.

Vertical text on the left side of the page, possibly a list or index, including numbers and names.

Vertical text on the left side of the page, possibly a list or index, including numbers and names.

Vertical text on the left side of the page, possibly a list or index, including numbers and names.

LAW OFFICES

4096

HICKS, DICKSON & LANGE

YALE HICKS
CHARLES M. DICKSON
EDWARD H. LANGE
JAMES M. WILLIAMSON
N. A. QUINTANILLA
J. ARTHUR SANDLIN

SOUTH TEXAS BANK BLD'G.
SAN ANTONIO

MEXICAN-AMER. BANK BLD'G.
LAREDO

CABLE ADDRESS
"HICKSLAW"

Laredo, Texas,
October 22, 1935.

Honorable J. H. Walker, Commissioner,
General Land Office,
Austin, Texas.

Dear Sir:

Re: Boundary line, Zapata and Webb
Counties, Texas.

In pursuance of your request contained in your letter of October 15, 1935, we have obtained and herewith inclose a certified copy of the map prepared by E. J. Foster, County Surveyor of Webb County, on February 17, 1921, showing the boundary line between Zapata and Webb Counties, Texas, as fixed by the judgment of the 49th District Court of Jim Hogg County, Texas.

We trust that said map is sufficient for your purposes; but if not, please let us know what other instruments or evidence you may desire in the matter.

With the highest personal regards and best wishes to you and your associates, we remain

Very truly yours,

HICKS, DICKSON & LANGE

BY James M. Williamson

JMW/RFS
INCL

RECEIVED

OCT 23 1935

REFERRED TO MAP

Webb Co Bdry Line 3b