

D-985-

769

DIVISION LINE OF WEBB AND DUVAL COUNTIES, TEXAS.

X STATE OF TEXAS,

COUNTIES OF WEBB AND DUVAL

To the Honorable County Court of Webb County, and the Honorable County Court of Duval County:

WHEREAS; the Honorable County Court of Webb County, Texas, did on the 13th day of January, 1943 make and enter an order requiring a resurvey of the boundary line between Webb County and Duval County, and E. J. Foster, County Surveyor of Webb County was appointed to make said survey, for and on behalf of Webb County, and said order fixed the date for beginning said survey on the 18th day of February 1943, and a copy of said order was duly served upon the Judge of the County Court of Duval County and after such service it was agreed in writing between the respective Judges of the County Courts of Duval and Webb Counties that the date for the beginning of said work be postponed from the 18th day of February, 1943, until the 20th day of March, 1943, on which latter date, I, E. J. Foster, County Surveyor of Webb County, having previously qualified according to law to perform said work, proceeded to the northeast corner of Webb County, same being the northwest corner of Duval County, the beginning corner fixed by the order of the County Court, and there met L. M. Brumfield, the County Surveyor of Duval County, and after some preliminary work, we jointly began the actual survey of the boundary line between our respective counties, the report of the joint survey being as follows:

Beginning at a concrete barrel, solid, deeply buried in the ground and being the same point designated as the established northeast corner of Webb, and the northwest corner of Duval, southeast corner of La Salle, and southwest corner of McMullen Counties, Texas as established in 1876 by the respective surveyors of said counties, Dix, Caldwell, and Brown, as stated in records in the County Courts of Webb and Duval Counties.

This corner lies on the northwest slope of an open hill and about 250 vrs. southeast of a new tank; a mesquite marked /X/ 8" in diameter bears S70° 00' W 17.5 vrs., another mesquite 7" in diameter /X/ bears N 88° 12' W 21.5 vrs., being trees marked by me in 1915.

A new bearing, a mesquite 5" in diameter marked /X/ bears N 65° 20' E

Webb Co. Bdry Line 6

+

101

RECEIVED
APR 28 1944
REFERRED TO MAP

Wells Co. Bay. Line #6
59787

38.2 vrs.

After having taken Polaris at its Western Elongation on the night of March 21, 1943 we found that the variation of the needle was N 10° 23' E on which variation the line was run.

Thence; S 00° 06' 00" W along the old original county line as run in 1876 by Dix, Caldwell and Jarvis, respective surveyors of Webb, Duval and Nueces land District, at 1.0 vrs. passed concrete monument, set by Foster and Brumfield for a reference point in this survey, said monument being marked W-D-L-M on each side of its four faces, at 151 vrs. passed a new road, at 280 vrs. passed 203 vrs. east of a buried petrified stone, the northeast corner of survey 346, Louis Yeager's land, and 128 vrs. west of another stone, the southeast corner of survey 41, also owned by Louis Yeager, at 838.6 vrs. passed a fence line running N 87° W, of southwest corner of survey 38, and an interior corner of survey 42, at 1900.8 vrs. placed a post marked W-D for first mile on north slope of a hill and north of old roadway, now obsolete, bearings on Magueyitos Hill as noted in original field notes not taken as condition of day being very hazy and unable to sight far, at 2,190 vrs. the center of road, Freer to Encinal, a laned roadway graded, at 2,196 vrs. pass the north line of survey 344, 178.2 vrs. east of a stone, its northwest corner southeast corner of survey 346, and the northeast of survey 345, and southwest corner of survey 42, and being recognized as an old corner on south side of laned roadway, at 3,801.6 vrs. placed a stone in an old tank dam, for the 2nd Miles, and at 5,723.0 vrs. a large stone and decayed league post, being the first league marked on the line. At this point we placed a concrete monument for the First League.

SECOND LEAGUE

Thence; S 00° 02' W along the original line, at 238 vrs. pass 138 vrs. east of a stone, the northwest corner of survey 341, and southwest of No. 342, at 754 vrs. pass 5.0 vrs. east of a double hackberry tree 18" and 14" diameters both marked /X/ on the east bank of the Charamusco Creek, at 780 vrs. cross the north fork of the same creek, at 934 vrs. cross the south fork of the same, at 1.705 vrs. cross a fence, the south line of Mabel Adami's land, at 1.723 vrs. cross an old road, at 1921.3 vrs. to an 18" high petrified stone on

343 vrs.

After having taken bearings at its eastern extremity on the night of March 21, 1895 we found that the variation of the needle was $10^{\circ} 25'$ in which variation the line was run. Thence; $2^{\circ} 00'$ $85^{\circ} 00'$ W along the old original survey line as run in 1878 by Mr. Calneil and Jarvis, respective surveyors of the 1st and 2nd sections of Twp. 10 N. R. 10 W. passed concrete monument, set by Foster and Brantford for a reference point in this survey, said monument being marked 2-2-2 on each side of the road, at 121 vrs. passed a new road, at 230 vrs. passed 203 vrs. east of a buried pointed stone, the northeast corner of survey 346, Louis Yeager's land, and 123 vrs. west of another stone, the southeast corner of survey 41, also owned by Louis Yeager, at 208.0 vrs. passed a fence line running $87^{\circ} 15'$ W, of southeast corner of survey 30, and an iron corner of survey 42, at 1800.0 vrs. placed a post marked 2-2 for this line on north slope of a hill and north of old roadway, now overgrown, bearing on the north side of hill as noted in original field notes not taken as a condition of day being very hazy and unable to place bar, at 2,150 vrs. the center of road, then to the north, a fence roadway crossed, at 2,155 vrs. pass the north line of survey 344, 170.0 vrs. east of a stone, the northeast corner southeast corner of survey 346, and the northeast of survey 345, and southeast corner of survey 42, and being recognized as an old corner on north side of fence roadway, at 2,501.0 vrs. placed a stone in an old tank dug for the 2nd well, and at 2,725.0 vrs. a large stone and decayed fence post, being the first fence marked on the line. At this point we placed a concrete monument for the first fence.

SECOND LEG

Thence; $2^{\circ} 00'$ $85^{\circ} 00'$ W along the original line, at 230 vrs. pass 123 vrs. east of a stone, the northwest corner of survey 41, and southeast of N. 242, at 724 vrs. pass 0.0 vrs. west of double post-horn trees 10" and 14" diameter both marked V on the line of the Charbono Creek, at 780 vrs. cross the north fork of the creek, at 824 vrs. cross the south fork of the creek, at 875 vrs. cross a road, the north line of what is now the 1st section of Twp. 10 N. R. 10 W. at 1811.0 vrs. to an old well, the north side of

RECEIVED
 FEB 28 1944
 REFERRED TO MAP

west slope of a hill for the 4th mile, an original mile post on the original line run in 1876, at 2,254.3 vrs. pass the north line of Survey 349, 146.6 vrs. east of its northwest corner, at 2,521.3 vrs. cross an old road, at 3,703.3 an old road, at 3,801.6 vrs. placed a post marked W-D for the 5th Mile Post, at 4,198.8 vrs. pass the north line of survey 350, pass same at 101 vrs. east of its northwest corner, at 5,710 set a concrete monument for the 2nd League.

THIRD LEAGUE

Thence; S 00° 02' W along the original line as run in 1876 at 289 vrs. an old road, at 405.1 vrs. pass 85.2 vrs. east of the northwest corner of survey 334, being also the southwest corner of survey 350, at 1,412 vrs. crossed a creek, at 1,520 cross road, at 1,807 vrs. broken tank on line, at 1,900.8 vrs. set a post marked W-D for the Seventh Mile, at 2,325 vrs. pass 65 vrs. east of the southwest corner of survey 334, being also the northeast corner of survey 233, at 2,948.5 vrs. crossed a road, at 3,146.8 vrs. crossed the Barranquitas Creek, at 3,801.6 vrs. set a post marked W-D for the Eight Mile, at 4,778.2 vrs. pass 60 vrs. east of a fence corner, the southwest corner of survey 233, at 5,601.2 vrs. pass 51 vrs. east of the southeast corner of survey 32, at 5,718 vrs. set a concrete monument for the Third League.

Fourth League

Thence S 00° 02' W along the original line at 238 vrs. passed 310 vrs. east of the northeast corner of survey 2316, at 350 vrs. passed 309 vrs. east of the northeast corner of survey No. 1, at 1,415 vrs. passed 298 vrs. east of the southwest corner of survey 277, being also the northwest corner of survey 276, at 1,900.8 vrs. set a post marked W-D for the Tenth Mile, at 3,632 vrs. passed 269 vrs. east of the southwest corner of survey 276, being also the northwest corner of survey No. 275, at 3,801.6 vrs. set a post marked W-D for the Eleventh Mile, at 5,718 vrs. set a concrete monument for the Fourth League.

Fifth League

Thence S 00° 02' W along the original line, at 199 vrs. passed 245.5 vrs. east of the southwest corner of survey 275, being also

RECEIVED
APR 28 1944
REFERRED TO MAP

Wabbe Co. B. Day. Inc. #6
1979

the southeast corner of survey No. 1, at 1,900.8 vrs. set a post marked W-D for the Thirteenth Mile, at 3,601.6 vrs. set a post marked W-D for the Fourteenth Mile, at 4,981 vrs. crossed the Barrocito Creek, at 5,718 vrs. found an old post (rotted original stump), the original Fifth League marked set by Dix and Caldwell, whence we set a concrete monument. The west end of Charamusco Hill bears N 30° 53' E about 8 miles, the south end of a north and south hill bears S 71° 14' E white cut on hill (a pipe line and road) bears S 53° 15' E, a mesquite marked /X/ bears S 68° 16' W.

Sixth League

Thence S 00° 02' W along the original line, at 55 vrs. crossed a pipe line which runs southeast, at 1,286.6 vrs. passed 1,397.7 vrs. west of the northeast corner of survey No. 100, being also the southeast corner of survey No. 101, at 1,900.8 vrs. set a post marked W-D for the Sixteenth Mile, 3,240 vrs. crossed the Alamito road, at 3,260 vrs. a stone marked D-E, at 3,801.6 vrs. set a post marked W-D for the Seventeenth Mile, at 5,701 vrs. set a concrete monument for the Sixth League.

Seventh League

Thence S 01° 45' W along the original line, at 322 vrs. crossed a sendero, being the proposed Laredo-Houston Highway, at 1,900.8 vrs. set a post marked W-D for the Nineteenth Mile, at 2,466.4 vrs. crossed the center line of the Bruni-Freer paved highway, at 2,476.4 vrs. passed 1,414.4 vrs. west of the southeast corner of survey No. 100 and 1,104 vrs. west of the northeast corner of survey 118, at 3,801.6 vrs. set a post marked W-D for the Twentieth Mile, at 3,886.4 vrs. pass 1,086.3 vrs. west of the southeast corner of survey 118, at 5,701.3 vrs. set a concrete monument where we found stones placed by the original surveyors for the Seventh League. Found a mesquite marked ///// S 10° 41' E 62.0 vrs. a coma tree //// N 08° 13' W 34 vrs.

Eighth League

Thence S 03° 00' E along the original line, at 67 vrs. passed 116 vrs. west of the southeast corner of survey 117, at 561 vrs. passed 87 vrs. west of the southwest corner of survey 903, being

-3
+

The southeast corner of survey No. 1, at 1,000.0 vrs. set a post
marked W-2 for the Northwest 1/4, at 8,501.8 vrs. set a post
marked W-3 for the Northwest 1/4, at 4,001.1 vrs. crossed the
cross, at 2,717 vrs. found an old post (rotted original survey)
the original 17th league marked set by Mr. and Mrs. C. H. Hill,
we set a concrete monument. The east end of the line was
2,509.5 vrs. about 2 miles, the south end of a north and south line
found 2,719.14 vrs. while out on 17th (a pipe line and road) found
2,529.18 vrs. a negative marked W/ found 2,589.18 vrs.

Sixth League

Thence 2,000.00 vrs. along the original line, at 25 vrs. crossed
a pipe line which runs southeast, at 1,288.0 vrs. passed 1,387.7 vrs.
west of the northeast corner of survey No. 100, being also the south-
west corner of survey No. 101, at 1,600.8 vrs. set a post marked
W-2 for the Northwest 1/4, 2,240 vrs. crossed the line to east,
at 2,200 vrs. a stone marked W-2, at 2,501.8 vrs. set a post marked
W-2 for the Northwest 1/4, at 2,701 vrs. set a concrete monument
for the Sixth League.

Seventh League

Thence 2,010.42 vrs. along the original line, at 222 vrs. crossed
a road, being the proposed Lando-Boston Highway, at 1,000.8 vrs.
set a post marked W-2 for the Northwest 1/4, at 2,482.4 vrs. crossed
the center line of the Grand-Trunk paved highway, at 2,474.4 vrs.
passed 1,414.1 vrs. west of the southeast corner of survey No. 100
and 1,104 vrs. west of the northeast corner of survey No. 112, at
2,801.6 vrs. set a post marked W-2 for the Northwest 1/4, at
2,388.4 vrs. west of the southeast corner of
survey No. 112, at 2,701.8 vrs. set a concrete monument where we found
marker placed by the original surveyors for the Seventh League.

RECEIVED
APR 28 1944
REFERRED TO MAP

Eighth League

Thence 2,020.00 vrs. along the original line, at 67 vrs. passed
112 vrs. west of the southeast corner of survey No. 112, being

also the northwest corner of survey 902, at 2,178 vrs. passed 2.0 vrs. west of the southeast corner of survey 116, at 2,221 vrs. pass the west line of survey 902, at 2,468 vrs. pass 13 vrs. east of the southwest corner of survey 902, at 3,801.6 vrs. set a post marked W-D for the Twenty-third Mile, at 3,847 vrs. passed 389.7 vrs. west of the southeast corner of survey 115, and 74.7 vrs. west of the northeast corner of survey 72, at 5,739 vrs. set a concrete monument for the Eighth League 2.5 vrs. east of a pipe set in concrete, being the northeast corner of survey 73 and the southeast corner of survey 72.

Ninth League

Thence S 00° 48' E along the original line, at 148.2 vrs. buried a pile of stones 2.6 vrs. east of the east line of survey 73, at 1,261.7 vrs. set a concrete monument marked W-D on the north side of new county paved highway, at 1,291 vrs. pass the center line of same, at 1,900.8 vrs. set a post marked W-D for the Twenty-fifth Mile, at 1,904 vrs. pass 4.5 vrs. west of the northeast corner of survey 114, at 3,256 vrs. crossed a telephone line which runs N 36° 24' E, at 3,784 vrs. the northeast corner of survey No. 111, and the southeast corner of survey 114, said corner is 8.5 vrs. west of our line, at 3,801.6 vrs. set a post marked W-D for the Twenty-sixth Mile, at 5,688 vrs. passed 13 vrs. west of the southeast corner of survey No. 111, at 5,715 vrs. placed a concrete monument on gravel hill in a stone mound, being the original Ninth League in the county line, bearing tree dead and destroyed, Jordan Hill (Calahuala) bearing checked.

Tenth League

Thence S 00° 48' E along the original sendero as noted by marked trees on the line, at 301.5 vrs. pass 14.5 vrs. west of the southwest corner of survey 390, and southeast corner of survey 2350 and 917.7 vrs. east of the northwest corner of survey 734 a stone marked A-L, at 1900.8 vrs. placed a 2" iron pipe for the Twenty-eight Mile marked XXVIII, at 3,801.6 vrs. placed an iron pipe for the Twenty-ninth Mile, at 5,841 vrs. placed a concrete monument for the Tenth League between two large stones, on the north side of same, being the original Tenth League marker on the line. Bearings, only stumps of original mesquite found. Marked a Frigolillo

Also the northwest corner of survey 302, at 2,175 vrs. passed 2.0
 vrs. west of the southeast corner of survey 110, at 2,221 vrs. pass
 the west line of survey 302, at 2,438 vrs. pass 13 vrs. east of the
 southwest corner of survey 302, at 2,501.5 vrs. set a post marked
 7-D for the Twenty-Ninth Mile, at 2,547 vrs. passed 359.7 vrs. west
 of the southeast corner of survey 110, and 74.7 vrs. west of the
 northeast corner of survey 72, at 2,759 vrs. set a concrete monument
 for the eighth league 2.3 vrs. east of a pipe set in concrete, being
 the northeast corner of survey 72 and the southeast corner of survey 72.

NINTH LEAGUE

Traverse 2 00' 42" E along the original line, at 148.2 vrs.
 located a pile of stones 2.8 vrs. east of the east line of survey
 72, at 1,201.7 vrs. set a concrete monument marked 7-D on the
 north side of new county paved highway, at 1,201 vrs. pass the center
 line of same, at 1,200.8 vrs. set a post marked 7-D for the Twenty-
 fifth Mile, at 1,204 vrs. pass 4.8 vrs. west of the northeast corner
 of survey 114, at 2,208 vrs. crossed a telephone line which runs
 N 20° 24' E, at 2,785 vrs. the northeast corner of survey No. 111,
 and the southeast corner of survey 114, said corner is 2.3 vrs. west
 of our line, at 2,501.5 vrs. set a post marked 7-D for the Twenty-
 fifth Mile, at 2,501 vrs. passed 13 vrs. west of the southeast corner
 of survey No. 111, at 2,715 vrs. placed a concrete monument on
 gravel hill in a stone mound, being the original Ninth League in
 the county line, bearing five feet and destroyed, Jordan Hill

(California) being checked.

TENTH LEAGUE

Traverse 2 00' 42" E along the original section as noted by
 marked trees on the line, at 301.5 vrs. pass 14.5 vrs. west of the
 southwest corner of survey 290, and southeast corner survey 290
 and 21.7 vrs. east of the northwest corner of survey 290
 marked A-C, at 1200.8 vrs. placed a 2" iron pipe
 eight miles marked XVIII, at 2,501.5 vrs.
 the twenty-ninth mile, at 2,501 vrs. placed a concrete monument
 for the tenth league between two large stones, on north side
 of same, being the original Tenth League within the line, bear-

RECEIVED
 APR 28 1944
 REFERRED TO MAP

/// N 63° 00' W 31.4 vrs., a 5" mesquite marked /X/ S 79° 15' E 43.4 vrs. a windmill at the Lopez Ranch, bears S 34° 13' W, a graveyard at San Pablo bears N 60° 06' W.

Eleventh League

Thence S 00° 48' E along the original survey line, at 257 vrs. passed 408.8 vrs. east of stone, the southeast corner of survey 729, the southwest corner of survey 730, at 276 crossed the San Pablo-Soledad road, at 1,627 vrs. pass 50 vrs. west of burial vault (Francisco Lopez remains) at 1,662 vrs. cut through small frame house at Francisco Lopez Ranch, a tool house, at 1,669 vrs. placed a stone buried on ground at south side of said house, at 1,817.7 vrs. the south edge of ploughed field, a well bears N 28° 15' W 119.8 vrs. and a live Oak tree bears N 42° 21' W 104 vrs. at 1,900.8 vrs. placed a 2" iron pipe in dry lake marked XXXI for the 31st Mile, at 2,734 vrs. passed 25.5 vrs. east of a well and windmill, inside of a wire fence, at 3,801.6 vrs. set a post and stone mound for the 32nd Mile, at 4,168 vrs. pass 762 vrs. east of stone, the northwest corner of survey 167, and the northeast corner of survey 2265, at 4,497 vrs. pass a stone mound on original survey, at 5,284 vrs. pass 2.5 vrs. east of two live Oak trees at the Encino Ranch, which are about 50 vrs. west of large mott of live oak trees, at 5,296 vrs. passed 3.0 vrs. west of water well of Encino Ranch, at 5,702.4 vrs. placed a concrete monument and stone mound on rocky hill for the Eleventh League, from which a chimney at Encino Ranch bears N 27° 52' W.

Twelfth League

Thence S 01° 28' W (changed course as line from this point south was surveyed by offsets and no League marker was found on a direct straight line) at 397 vrs. pass south line of survey 167 (146) 762.5 Vrs. east of its southwest corner, and northwest corner of survey 62, at 605.5 vrs. pass the north line of survey 668, 452.5 vrs. west of its northeast corner, at 1,900.8 vrs. set a post marked W-D and a stone mound for the 34th Mile in heavy black brush, at 2,552.5 vrs. pass the south line of survey 668 and north line of survey No. 461, from which the northeast corner of 461, a large

111 N 23° 00' W 21.5 yrs., a 3" diameter marked X 2 70° 15' E
55.4 yrs. a vertical at the corner, corner 2 24° 15' W, a
crossed at San Pedro corner 2 00° 00' E.

Eleventh Section

There is 500 48' E along the original survey line, at 287 yrs.
passed 400.5 yrs. east of stone, the southeast corner of survey
782, the southwest corner of survey 780, at 270 crossed the San
Pedro-Solada road, at 1,627 yrs. pass 80 yrs. west of burial vault
(found on paper remains) at 1,622 yrs. and through a hill cross
found at Francisco Lopez Ranch, a rock house, at 1,622 yrs. passed
a stone buried on ground at south side of said house, at 1,617.7 yrs.
the south edge of ploughed field, a well corner 2 28° 15' E 112.8
yrs. and a live oak tree bears 2 28° 21' E 104 yrs. at 1,500.8 yrs.
placed a 2" iron pipe in dry lake marked XIII for the six mile,
at 2,726 yrs. passed 28.5 yrs. east of a well and whitell, located
of a wire fence, at 2,801.8 yrs. set a post and stone mound for the
282d mile, at 4,188 yrs. pass 782 yrs. east of stone, the northwest
corner of survey 187, and the northeast corner of survey 280, at
4,487 yrs. pass a stone mound on original survey, at 2,822 yrs.
pass 2.5 yrs. east of two live oak trees at the Solano Ranch, which
are about 80 yrs. east of large well of live oak trees, at 2,792
yrs. passed 2.0 yrs. east of water well of Solano Ranch, at 2,702.4
yrs. placed a concrete monument and stone mound on rocky hill for
the Eleventh Section, from which a chimney at Solano Ranch bears
2 70° 22' W.

Twelfth Section

Section 2 01° 38' E (changed course on line from the point
south was surveyed by all sets and the change marker was found on a
direct straight line) at 287 yrs. pass south line of survey 187
(187) 782.5 yrs. east of the southeast corner, and survey corner
of survey 28, at 602.5 yrs. pass the north line of survey 28, at
yrs. east of the southeast corner, at 1,622 yrs. pass the north line of survey
28 and a stone mound for the 282d mile, at 4,188 yrs. pass 782 yrs.
2,801.8 yrs. pass the south line of survey 28, at 2,702.4 yrs. pass
4,487 yrs. pass the northeast corner of 281, a large

RECEIVED
APR 28 1944
REFERRED TO MAP

stone, bears east 501 vrs., being also the northwest corner of survey 666, at 3,801.6 vrs. placed a post marked W-D and stone mound for the 35th mile, in heavy brush, at 4,445 vrs. pass the south line of survey 461 and north line of survey 462, at a point which bears west 554 vrs. from a large sillar stone, the southeast of 461 and northeast of 462, at 4,561 vrs. pass old Corpus Christi-Laredo road stone mound placed in original survey of line bears west 20 vrs., at 5,655 vrs. a concrete monument on north side of telephone and pipe line, at 5,663 vrs. pass United Gas Co. telephone and gas line, and at 5,828 vrs. a large stone marked DUV, being on the north side or slope of a sandy caliche hill and placed inside of stone ring or mound, being the original Twelfth League marker on this line; a windmill on high hill bears N 37° 48' W. 152.4 vrs. another windmill bears N 07° 14' W.

Thirteenth League

Thence S 00° 43' W at 560 vrs. pass the south line of survey 462 at 597 vrs. west of its southeast corner, a large stone, being also the northeast corner of survey 139, at 1,900.8 vrs. placed a stone mound for the 37th mile marker, at 2,501 vrs. pass the south line of survey 139, 1,449.4 vrs. east of its southwest corner and the northwest corner of survey 320 bears east 116.6 vrs., at 2,741 vrs. pass 119.8 vrs. west of the northeast corner of survey 691, a fence corner and stone, at 3,801.6 vrs. placed a post marked W-D and stone mound for the 38th Mile, at 3,489.4 vrs. pass telephone and oil line, course S 84° 15' E 127 vrs. west of gate, at 3,670 vrs. the southeast corner of survey 691, and northeast corner of survey 714, two stones bear east 140.7 vrs., at 5,836 vrs. a large stone mound in red sandy hill, very brushy, the Thirteenth League marker on original line whence we placed a concrete monument, two corm trees together marked //// bear S 86° 19' E 62.0 vrs. a windmill at Houston Oil Co. camp bears S 44° 37' E, another windmill bears S 35° 13' E in the Rufino Lopez land.

Fourteenth League

Thence S 00° 47' 30" W at 1,047 vrs. pass 165.5 vrs. west of the southeast corner of survey 714, two stone, and northeast corner of survey 2080, at 1,900.8 vrs. placed a stone mound for the 40th

76

... being also the northeast corner of
... placed a post marked W-U and stone
... in heavy brick, at 4.45 vrs. pass the
... and north line of survey 402, at a point
... from a large silver stone, the southeast
... at 5.301 vrs. pass old corner
... placed in original survey
... at 5.602 vrs. a concrete corner on north side of
... pass United Gas Co. tele-
... a large stone marked WU,
... on the north side or slope of a sandy caliche hill and placed
... being the original twelfth league
... a witness on high hill bears N 37° 49' W

122.4 vrs. another witness bears N 0° 14' W.

Thirteenth League

... at 5.602 vrs. pass the south line of survey
... east of its southeast corner, a large stone, being
... at 1.000.8 vrs. placed a
... at 2.501 vrs. pass the south
... east of its southwest corner and
... bears east 118.6 vrs., at 2.761
... west of the northeast corner of survey 601,
... placed a post marked W-U
... at 3.488.4 vrs. pass telephone
... course 3 84° 13' E 127 vrs. west of gate, at 3.878
... and northeast corner of
... at 5.325 vrs. a large
... very sandy hill, very rocky, the thirteenth league
... placed a concrete monument, the
... bears 3 83° 13' E in the hollow corner
... at 3.440.8 vrs. another witness

RECEIVED
APR 28 1944
REFERRED TO MAP

... at 1.000.8 vrs. placed a post marked W-U and stone
... northeast corner
... at 1.000.8 vrs. placed a post marked W-U and stone

Mile marker, at 2,581 vrs. pass the northwest boundary line of the Los Angeles Grant, at 3,160 vrs. pass a telephone and pipe line and road bearing S 55° or' E, at 3,165 vrs. pass a concrete monument on north end of Cole Petroleum Co. camp, at 3,801.6 vrs. placed a concrete monument for the 41st Mile, at 5,740 vrs. a large stone mound whence placed a concrete monument being the Fourteenth League marker on the original survey line. A stone mound on the old Corpus Christi road bears N 00° 47' E 185.0 vrs.

Fifteenth League

Thence S 00° 47' 30" W at 3,849 vrs. pass stone mound on old line on south side of old road, at 5,741 vrs. a large stone and small stones around it for the Fifteenth League marker of the original survey.

Sixteenth League

Thence S 00° 02' E at 1,060 vrs. pass 938 vrs. west of large stone boulders called "Piedras de Lumbre", at 1,154 vrs. a concrete monument, at 1,178 vrs. pass paved Corpus Christi-Laredo Highway, at 1,331 vrs. cross the Texas-Mexican Railway line, course S 51° 36' E, at 1,347 vrs. a concrete monument, at 1,376 vrs. cross the old Hebronville-Bruni road, at 1,772 vrs. a concrete monument on the southeast boundary line of the Los Angeles Grant at the north corner of survey 2219, and west corner of survey 174, being also the north corner of the Bruni Estate Pasture, at 1,992 a concrete monument, at 5,734 vrs. placed a concrete monument and large flint stone (conglomerate) being the original Sixteenth League marker on this county line survey. The southeast corner of survey 586 bears South 17.0 vrs.

Seventeenth League

Thence S 00° 02' E at 224 vrs. pass monument marked H-D-W being the southwest corner of Duval County, Texas, on the east line of Webb County. At 1,900.8 vrs. set a post marked W-D for the 49th Mile, at 3,801.2 vrs. set a post marked W-D for the 50th Mile, at 4,629 vrs. pass the southwest corner of the Duval County School Land Survey No. 150, the northwest corner of survey 317, at 4,966 vrs. pass 371 vrs. east of the northwest corner of survey 452, at 5,702.4 vrs. set a concrete monument for the Seventeenth League.

This corner, at 2,221 yds. was the northern boundary line of the
Los Angeles Grant, at 2,120 yds. was a pole line and
and road bearing 2 1/2° N. at 2,120 yds. was a concrete monument
at north end of pole line, at 2,201.2 yds. placed a
concrete monument for the old line, at 2,140 yds. a large stone
monument placed a concrete monument being the northern boundary
marker on the original survey line. A stone monument on the old survey
corner line bears S 00° 47' E 122.0 yds.

Fifteenth League

Corner S 00° 47' E at 2,025 yds. was stone monument on old
line on south side of old road, at 2,121 yds. a large stone and
wall stone stand is for the fifteenth league marker of the
original survey.

Sixteenth League

Corner S 00° 01' E at 1,000 yds. west of large
stone monument called "Thomas de la Torre", at 1,114 yds. a concrete
monument, at 1,148 yds. was given by James Chaffin-Lewis
at 1,251 yds. cross the Texas-Oregon Railway line, corner S 21°
30' E. at 1,251 yds. a concrete monument, at 1,275 yds. cross the
old Thompson's-Grant road, at 1,178 yds. a concrete monument on
the southern boundary line of the Los Angeles Grant at the north
corner of survey 2112, and west corner of survey 174, being also
the north corner of the Juan Salas Grant, at 1,282 a concrete
monument, at 1,706 yds. placed a concrete monument and large flag
stone (conspicuous) being the original Sixteenth League corner on
the county line survey. The southeast corner of survey 205 bears
South 14.0 yds.

Seventeenth League

Corner S 00° 02' E at 324 yds. was monument marked B-D-W being
the southeast corner of Davis County, Texas, on the east line of
Davis County. At 1,200.8 yds. was a post marked B-D for the 20th
line, at 2,201.8 yds. was a post marked B-D on the 20th line, 1/2
4,220 yds. was the northwest corner of Davis County School Land
Survey No. 120, the northwest corner of Davis County School Land
was 271 yds. east of the north line, at 2,121.2 yds. was
a concrete monument for the 17th league.

RECEIVED
APR 28 1944
REFERRED TO MAP

Eighteenth League

Thence S 00° 02' E at 1,186.6 vrs. pass 350.6 vrs. east of the northwest corner of survey 103, at 1,900.8 vrs. set a post marked W-D for the 52nd Mile, at 3,121 vrs. pass 332.1 vrs. east of the northwest corner of survey 102, at 5052.5 vrs. pass south line of survey 101, 270.4 vrs. east of its northwest corner, at 5,763.5 vrs. a concrete monument marked H-W, the southeast corner of Webb and an interior corner of Jim Hogg Counties as placed by me in June 25, 1913, from which a concrete monument marked D-E-10 bears S89° 50' E 709.8 vrs., another monument marked W-B-9 bears N 89° 50' W 1,191.0 vrs., west line of 102 is 260.4 vrs. W. At this point we set a concrete monument marked JH-W.

Variation N 10° 23 ' E
 Bearings Marked *////* and */K/*
 Surveyed March 22 to April 24, 1943

E. Rodriguez
 A. Gongora
 F. Garcia
 G. W. Morton

State of Texas
 Counties of Webb and Duval

I, E. J. Foster, a Licensed Land Surveyor, and County Surveyor of Webb County, Texas, and the surveyor designated by the Court to survey the East Boundary line of Webb County, Texas do hereby certify that the above and foregoing Field Notes and Map of said survey are true and correct.

Given under my hand and seal of office, at Laredo, Webb County Texas, this the 1st day of May, A. D., 1943.

Recorded in the County Surveyors Records of Webb County, Texas, in Book 12, pg. 514 to 519, on July 15, 1943

(SEAL)

E. J. Foster
 E. J. Foster
 County Surveyor of Webb County, Texas.

RECEIVED
 COUNTY SURVEYOR
 WEBB COUNTY TEXAS
 MAY 1943

-8
 †

Right-of-Way

Traverse 2 00' 02" E at 1,186.6 vrs. pass 589.8 vrs. east of the
northwest corner of survey 108, at 1,800.8 vrs. set a post marked
W-1 for the 32nd Mile, at 3,121 vrs. pass 322.1 vrs. east of the
northwest corner of survey 102, at 3082.8 vrs. pass south line of
survey 101, 270.4 vrs. east of its northwest corner, at 5,743.2 vrs.
a concrete monument marked B-W, the southeast corner of Webb and
an interior corner of the Hoggs Corners as placed by us in 1943
25, 1918, from which a concrete monument marked B-2-10 bears
2500 20' E 70.8 vrs., another monument marked W-2-2 bears N 80°
50' W 1,191.0 vrs., west line of 102 is 250.4 vrs. W. At this
point we set a concrete monument marked H-7.

- E. Robinson
- A. Gougeon
- P. Garcia
- G. E. Nelson

Variation N 10° 23' E
Bearings marked III and IV
Surveyed March 22 to April 24, 1943

State of Texas
County of Webb and DeWitt

I, G. E. Nelson, a licensed land surveyor, and County Surveyor
of Webb County, Texas, and the surveyor designated by the Court to
survey the East boundary line of Webb County, Texas do hereby cer-
tify that the above and foregoing field notes and map of said survey
are true and correct.

Given under my hand and seal of office, at Laredo, Webb County
Texas, this 1st day of May, A. D., 1943.
Recorded in the County Surveyors Records of Webb County, Texas,
in Book 12, pp. 212 to 215, on July 15, 1943

G. E. Nelson
County Surveyor of Webb County, Texas.

(2894)

RECEIVED
APR 28 1944
REFERRED TO MAP

THE STATE OF TEXAS)

COUNTY OF W E B B)

I, J. A. RODRIGUEZ, Clerk of the County Court in and for Webb County, Texas, do hereby certify that the foregoing is a true and correct copy of the original Field Notes and Map of the Webb-Duval Counties boundary line as the same appears of record in my office in Volume 4 pages 122-127 of the County Court Minutes of Webb County, Texas.

Witness my hand and official seal, this the 12th., day of April, A. D. 1944.

J. A. RODRIGUEZ, Clerk,
County Court, Webb County, Texas.
By Salina Deputy.

RECEIVED
APR 12 1944
REFERRED TO MAP

THE STATE OF TEXAS)
COUNTY OF WEBB)

I, J. A. RODRIGUEZ, Clerk of the County Court in and for Webb County, Texas, do hereby certify that the foregoing is a true and correct copy of the original Field Notes and Map of the Webb-DeWitt Counties boundary line as the same appears of record in my office in Volume 4 pages 122-127 of the County Court Minutes of Webb County, Texas.

Witness my hand and official seal, this 28th day of

APRIL, 1944.

J. A. RODRIGUEZ, Clerk,
County Court, Webb County, Texas.
BY _____ Deputy.



RECEIVED

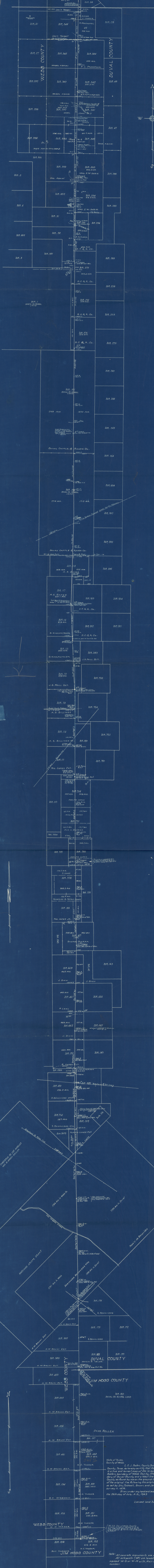
APR 28 1944

REFERRED TO MAP

MAP OF THE DIVISION LINE BETWEEN WEBB AND DUVAL COUNTIES BEING THE EAST LINE OF WEBB AND THE WEST LINE OF DUVAL COUNTIES, TEXAS.

RE-SURVEYED MARCH 22 TO APRIL 24, 1943 BY E. J. FOSTER COUNTY SURVEYOR OF WEBB COUNTY, TEXAS. SCALE 1" = 1000 YARDS

LA SALLE COUNTY SUR. 37 McMULLEN COUNTY



State of Texas, E. J. Foster, County Surveyor of Webb County, Texas, do hereby certify that the foregoing map is a true and correct map of the re-survey of the Western boundary of Webb County and a West line of Jim Hogg County as found by me on the ground in the re-survey of the original line following the original league markers as set by O. L. Howell, Brown and Jarvis in their survey in 1876. Given under my hand and seal of office this 26th day of July, A. D., 1943.

E. J. Foster
Licensed Land Surveyor.

Note: All concrete monuments are marked W.D. All mileposts (MP) are marked mesquite posts marked W-D or W-JH with their respective mile number.

6 ~~2~~

See Webb Co Bidry Line # for Correspondence

WEBB CO. BOUNDARY LINES.

EAST BOUNDARY LINE WEBB CO.
AND W BOUNDARY LINE DUVAL
DUVAL CO. AND N PART OF THE
WEST BOUNDARY LINE OF JIM HOGG CO.

SURVEYED MAR. 22ND TO APRIL 24TH 1943
BY E. V. FOSTER Co. SUR. WEBB CO.
AND L. M. BRUMFIELD " " DUVAL CO.

RECEIVED IN C.L.O. APRIL 28TH 1944
W. Sherriffs

Received
by
C.L.O.