

WEBB-LA SALLE BOUNDARY

D-985-

State of Texas,
Counties of Webb
and LaSalle.

469

To the Honorable County Court of Webb County and the Honorable County Court of LaSalle County:

Whereas, the Honorable County Court of Webb County, Texas, did on the 14th day of April, 1943, make and enter an order requiring a resurvey of the boundary line between Webb County and LaSalle County, and E. J. Foster, County Surveyor of Webb County was appointed to make said survey for and on behalf of Webb County, and said order sets the date for beginning said survey on the 5th day of May, 1943, and on which latter date, I, E. J. Foster, County Surveyor of Webb County, having previously qualified according to law to perform said work, proceeded to a NE corner of Webb County in the West boundary line of LaSalle County, being also the SE corner of Dimmit County, the beginning corner fixed by order of the County Court, but the County Court of LaSalle County although duly served according to law failed and refused to have the Surveyor of said County present and assist in the surveying of said boundary line between the Counties of LaSalle and Webb and I proceeded and began the actual survey of said boundary line, and the report of said survey being as follows:

Thence S01°12'E along the original survey line as run for the west line of LaSalle and an eastern boundary of Webb County, at 1631.8 vrs. pass East boundary line of Survey 351, at a point 876.8 vrs. S20°14'E of its North corner, placed a square mesquite post at this line, at 1900.8 vrs. placed a square mesquite post marked W-L 1, for the First Mile, on south slope of rise, at 2,195 vrs. cross the Raices Creek, at 2,715 vrs. pass the NW line of Survey 352 at a point 353.2 vrs. S69°02'W of its North corner, at 3,801.6 vrs. placed a post for Mile Post No. 2, marked W-L 2, in a field NE of Jim Carr's ranch house and well; at 4,520 vrs. pass 216 vrs. East of a wind mill and well at Jim Carr's Ranch on Survey 352, at 4,725 vrs. the S.E. of Survey No. 299 A.C.S.L. at a point N69°13'E 58 vrs. from its most westerly corner, and the N.E. corner of Survey No. 1969, at 5,702.4 vrs. placed a hewed mesquite post for the Third Mile marked W-L 3, at 6,423.3 vrs. pass 90.4 vrs. East of the NW corner of Survey 506-1/2, and SW corner of ACSL Survey No. 299, at 7,603.2 vrs. placed a hewed mesquite post for the Fourth Mile Post marked W-L 4, at 9,236.7 vrs. cross the North line of Survey No. 648, at 313 vrs. S60°49'E of its NW corner, at 9,504.2 vrs. placed a hewed mesquite post marked W-L V for the Fifth Mile Post, at 11,404.8 vrs. placed a hewed mesquite post marked W-L VI for the Sixth Mile Post, at 11,594.0 vrs. pass the North line of Survey 647, at 466 vrs. N60°49'W of its NE corner, at 12,574 vrs. cross West line of Survey 648 at 798 vrs. S29°10'W of its NW corner, at 13,305.6 vrs. placed a hewed mesquite post marked W-L VII for the Seventh Mile Post, at 13,812.4 vrs. cross North line of Survey 639 at a point 675.8 vrs. S60°48'E of its SW corner, at 14,680 vrs. cross the Jaboncillos Creek, at 15,206.4 vrs. placed a hewed mesquite post marked W-L VIII for the eight mile post, at 15,983.4 vrs. placed a concrete

Webb Co Bdry Line 7

STATE OF TEXAS
COUNTY OF TARRANT

10-11

Whereas the Honorable County Court of Tarrant County, Texas, did on the 14th day of April, 1944, make and enter an order vesting a survey of the boundary line between Webb County and Tarrant County, and E. J. Foster, County Surveyor of Webb County was appointed to make said survey for and on behalf of Webb County, and said order sets the date for beginning said survey on the 5th day of May, 1944, and on which latter date, E. J. Foster, County Surveyor of Webb County, having previously qualified according to law to perform said work, proceeded to a corner of Webb County in the West boundary line of Tarrant County, being also the SE corner of Tarrant County, the beginning corner fixed by order of the County Court, but the County Court of Tarrant County although duly served according to law failed and refused to have the Surveyor of said County present and assist in the surveying of said boundary line between the Counties of Tarrant and Webb and I proceeded and began the actual survey of said boundary line, and the report of said survey being as follows:

These 800 1/2' along the original survey line as run for the West
of Tarrant and an eastern boundary of Webb County, at 1001.8
west boundary line of Survey 321, at a point 977.5
of its north corner, placed a square mark at the end of
1000.8 was placed a square mark at the end of the line
line, on north side of road, at 8,100 was crossed the road
2.715 was from the NW line of Survey 322 at a point 853.8 was 288
of the north corner, at 3,801.8 was placed a post for the
marked W-1-2, in a field NE of the farm known as and well, at 4,520
was from 218 was east of a wind mill and well, at the corner
Survey 322, at 1,783 was the S.E. of Survey 32, 1,800 at a point
800 1/2' was from the most westerly corner, and the N.E. corner of
Survey No. 1830, at 1,702.1 was placed a hand marked post for the
Third line marked W-1-3, at 1,423.3 was from 300.4 was from the
corner of Survey 308-1/2, at the SW corner of Survey No. 322, at 1,002.8
was placed a hand marked post for the fourth line of Survey 321, at
at 9,327.7 was from the north line of Survey 32, 510 at 510 was
300 1/2' of the NW corner, at 9,300.4 was placed a hand marked post
marked W-1-4 for the fifth line of Survey 32, at 11,042.8 was placed a hand
marked post marked W-1-5 for the sixth line of Survey 32, at 11,000.0 was
from the north line of Survey 321, at 880 was from the SW corner of
at 18,377.7 was from the west line of Survey 321, at 700 was from the
NE corner, at 13,300.4 was placed a hand marked post for the
for the seventh line of Survey 32, at 13,312.4 was from
300 at a point 675.3 was from the SW corner of Survey 32, at 13,300.4 was
the Tarrant line from, at 13,300.4 was placed a hand marked post for the
marked W-1-6 for the eighth line of Survey 32, at 13,300.4 was

RECEIVED
APR 28 1944
REFERRED TO MAP

WEBB-LASALLE BOUNDARY NO. 2

monument marked W-L on North line of lane of old Carrizo-Encinal road, at which bears $N60^{\circ}51'W$ of the East line of Survey No. 640, at 15,996 vrs. the center line of said Carrizo-Encinal Road, at 16,098.8 vrs. a large 12" mesquite with original markings W-L on the East side of the line about 0.4 of a vara, at 16,224.9 vrs. cross the East line of Survey No. 640 at a point $S29^{\circ}00'W$ of its NE corner, at 16,526.1 vrs. pass 82.1 vrs. East of the SW corner of Survey 692, and the N.W. corner of Survey 696, at 17,107.2 vrs. placed a hewed mesquite post marked W-L IX for the Ninth Mile Post, at 18,451.1 vrs. pass 1224 vrs. East of the SW corner of Survey No. 696, at 18,777.6 vrs. cross the North line of Survey No. 634, at a point 88.2 vrs. $N89^{\circ}28'W$ of its N.E. corner, at 19,008.0 vrs. placed a hewed mesquite post marked W-L X, for the Tenth Mile Post, at 20,677.6 vrs. pass 77.5 vrs. West of the SE corner of Survey No. 634, at 20,766.0 vrs. placed a concrete monument marked W-L on north line of fence of land of Encinal-Galvan Road, at 20,687 vrs. pass the center-line of said road, at 20,908.8 vrs. placed a hewed mesquite post marked W-L XI for the Eleventh Mile Post, at 22,577.6 vrs. pass 66.2 vrs. West of the SE corner of Survey 635, and the NE corner of Survey No. 636, at 22,596 vrs. cross a deep creek, at 22,809.6 vrs. to a concrete monument marked W-L, and a stone mound placed around it, being the original SW corner of LaSalle County, and an interior corner of Webb County, as established by Pressler and Mills, surveyors, in the year 1877, and re-established by myself in June, 1915. Original witness tree, a dead mesquite stump bears $S81^{\circ}00'W$ 36.0 vrs., another mesquite 7" in diameter marked /X/ bears $S70^{\circ}03'W$ 64.0 vrs., another mesquite 4" in diameter marked /X/ bears $N11^{\circ}26'W$ 23.2 vrs., a lone mesquite on hill 10" in diameter bears $S18^{\circ}30'E$ 231.5 vrs. marked X, a wind mill about $3/4$ of a mile distant bears $S26^{\circ}28'W$, the end of this line;

Thence $N86^{\circ}52'E$, along the original boundary line as established by me in the year 1915, at 65 vrs. pass 232.3 vrs. $S00^{\circ}43'E$ of the NE corner of Survey 636, at 1900.8 vrs. placed a post marked W-L I, for Mile Post One, on bank of a deep creek, at 2,082.3 vrs. pass 17.5 vrs. South of the SE corner of Survey No. 339, at 3,008.6 vrs. pass high electric power line, at 2,333.3 vrs. pass 26 vrs. North of the NE corner of Survey 125, at 3,764.5 vrs. cross the Missouri Pacific Railroad track at the center line, at 3,801.6 vrs. the center of State Highway (paved) No. 2, at 3,834.1 vrs. placed a concrete monument marked W-L, at 5,041.6 the West line of Survey 637, from which its SW corner bears $S00^{\circ}30'W$ 1021 vrs., at 5,702.4 vrs. placed a concrete monument marked W-L for the Third Mile Post, at 6,502.4 vrs. a $1/2$ " iron pipe in line, at 8,097 vrs. pass 328 varas North of the SW corner of Survey 495, at 7,603.2 vrs. set a post for the Fourth Mile Post, at 9,008 vrs. pass 416.3 vrs. North of the SW corner of Survey 496, at 9,504 vrs. placed a mesquite post marked W-L V, for the Fifth Mile Post, from which the Coma Wind mill bears $N17^{\circ}16'E$ and a 6" mesquite bears $S75^{\circ}08'W$ 18.0 vrs., at 11,404.8 vrs. placed a post marked W-L VI for the Sixth Mile Post, at 13,305.6 vrs. placed a post marked W-L VII for the Seventh Mile Post, at 15,206.4 vrs. placed a post marked W-L VIII for the Eighth Mile Post, at 16,680 vrs. pass the East line of Survey No. 66 and the West line of Survey 1481 at a point 285.0 vrs. North of the SW corner of Survey 1481, at 17,107.2 vrs. set a post marked W-L IX, for the Ninth Mile Post, at 19,008 vrs. placed a post marked W-L X, for the Tenth Mile Post, at 20,908.8 vrs. placed a post marked W-L XI for the Eleventh Mile Post, at 22,717.9 vrs. pass 54.8 vrs. South of the NE corner of Survey No. 1478 and NW corner of Survey No. 297, at 22,809.6 vrs. placed a stone and a post marked W-L XII for the Twelfth Mile Post, at 23,164 varas cross the Palo Blanco Creek, at 23,279.7 vrs. pass 24.4 vrs. South of the SE corner of Survey No. 46, at 23,944.4 vrs. pass 320 vrs. South of the NE corner of Survey No. 166, at 24,050 vrs. pass 30.0 vrs. North of an abandoned ranch site, at 24,710.4 vrs. placed a post marked W-L XIII for the Thirteenth Mile Post, at 26,611.7 varas placed a post marked W-L XIV for the Fourteenth Mile Post, at 28,512 varas placed a concrete monument marked W-L for the Fifteenth Mile Post, at 28,872 vrs. cross the Olmos Creek, at 29,962 varas cross the Charco Largo Creek, at 30,412.8 varas placed a post marked W-L XVI for the Sixteenth Mile Post, at 32,316.6 vrs. placed a post marked W-L XVII for

WEBB-LASALLE BOUNDARY NO. 3

the Seventeenth Mile Post near the NW line of Survey 594, at 34,214.4 vrs. placed a post marked W-L XVIII for the Eighteenth Mile Post in Survey No. 594, at 36,115.2 vrs. Placed Mile Post No. 19 marked W-L XIX, at 36,475 vrs. pass about 400 varas South of El Monte Cortado Ranch, at 36,985 varas cross the Encinal-Withers Road, now abandoned, at 38,016 varas placed a concrete monument marked W-L for the Twentieth Mile Post, at 39,916.8 varas placed a post marked W-L for the 21st Mile Post, at 41,817.6 varas placed a post marked W-L for the 22nd Mile Post, at 42,815 varas cross a deep arroyo, at 43,255 varas pass 1,012 varas North of the SW corner of Survey No. 40 where I placed a stone marked W-L, at 43,718.4 varas placed a stone marked W-L XXIII for the 23rd Mile Post, at 43,986 varas placed a stone marked W-L on east side of a road, at 45,619.2 varas placed a post marked W-L for the 24th Mile Post, at 47,520 placed a post marked W-L for the 25th Mile Post, at 48,687 varas placed a stone on west side of an old road, at 49,175.4 varas placed a stone 197 varas South of the SW corner of Survey No. 106, at 49,420.8 varas placed a stone marked W-L 26 for the 26th Mile Post, at 51,321.6 placed a stone marked W-L 27 for the 27 Mile Post, at 53,222.4 varas set a post marked W-L for the 28th Mile Post, at 54,232 varas cross the San Casimiro Creek, at 55,123.2 varas placed a concrete monument marked W-L 29 for the 29th Mile Post, at 55,237 varas cross road to Withers' Ranch, placed a concrete monument marked W-L on the East edge of the road, at 55,387.2 varas pass the East line of Survey No. 100, and 195.9 varas North of the SW corner of Survey No. 265, at 55,942 varas cross Laguna de Arizpe, at 57,024 varas placed a concrete monument marked W-L XXX for the 30th Mile Post, at 57,122 varas pass the East line of Survey No. 265 at a point 226 varas North of its SE corner, at 58,536 varas pass 952.3 varas North of the SE corner of Survey No. 98, at 58,924.8 varas placed a post marked W-L XXXI for the 31st Mile Post, at 60,012 varas pass the East line of Survey No. 97, West line of No. 98, at a point 722.0 varas North of the SE corner of Survey 97, at 60,825.6 varas placed a post marked W-L XXXII for the 32nd Mile Post, at 62,265 varas pass the West line of Survey No. 53 at a point 20.6 varas North of the SW corner of a fence and 5 varas North of a stone, at 62,726.4 varas placed Mile Post No. 33, being a concrete monument marked W-L, at 64,158.4 varas pass 106.3 varas North of the NW corner of Survey No. 51, at 64,627.2 varas set a post marked W-L XXXIV for the 34th Mile Post, at 65,051 varas cross the Charamusco Creek, at 66,332 varas pass 101.0 varas North of a stone, the NE corner of Survey No. 51, at 66,528 varas set a post marked W-L XXXV for the 35th Mile Post, at 67,451.4 varas placed a post on a bald hill, at 68,060 varas pass 276 varas North of a stone, the NE corner of Survey No. 46, at 68,254 a concrete monument marked W-L-M-D, Five feet high for the NE corner of Webb County, the SW corner of McMullen County, the NW corner of Duval County, the SE corner of LaSalle County, being the original common corner of these counties as established by Surveyors Dix, Caldwell, Brown, and Jarvis in the year 1877, and the concrete post placed replaces an old decayed mesquite post, which was placed besides this concrete monument, an 8" mesquite marked X bears S70°00'W 17.5 varas, another mesquite marked /X/ bears N88°12'W 21.5 varas, another mesquite marked X bears N65°20'E 38.2 varas.

Variation N10°27'E
 Bearings Marked /X/ and ///
 Surveyed May 5th to 20th, 1943

G.W. Morton
 Chain Carriers
 E. Rodriguez

State of Texas,
 Counties of Webb
 and LaSalle.

I, E. J. Foster, County Surveyor of Webb County, Texas, and the Surveyor appointed by the County Court to do this work, do hereby certify that the above and foregoing survey was made by me on the ground and according to law; and that the same is true and correct just as I found it on the ground and that it is recorded in Book 12, pages 507 to 509 of the County Surveyor's Records of Webb County, Texas.

Witness my hand and seal of office at Laredo, Webb County, Texas, this the 23rd day of May, A.D., 1943.

Map of the above and foregoing line is attached to these notes.

(Seal)

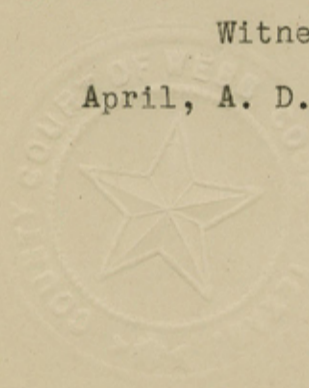
E. J. Foster
 County Surveyor of Webb County, Texas,
 and Licensed State Land Surveyor.

THE STATE OF TEXAS)
COUNTY OF W E B B)

I, J. A. RODRIGUEZ, Clerk of the County Court in and for Webb County, Texas, do hereby certify that the foregoing is a true and correct copy of the original Field Notes and Map of the Webb-LaSalle Counties Boundary as the same appears of record in my office in Volume 4 pages 112/114 of the County Court Minutes of Webb County, Texas.

Witness my hand and official seal, this the 12th., day of April, A. D. 1944.

J. A. RODRIGUEZ, Clerk,
County Court, Webb County, Texas.
By Salina Deputy.



RECEIVED
APR 28 1944
REFERRED TO MAP

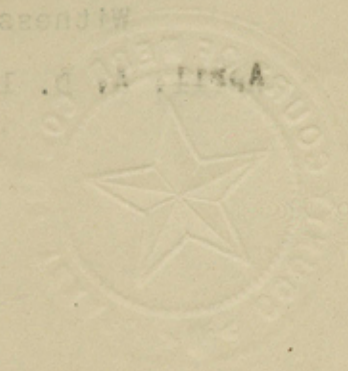
THE STATE OF TEXAS)
COUNTY OF WEBB)

I, J. A. RODRIGUEZ, Clerk of the County Court in and for
Webb County, Texas, do hereby certify that the foregoing is a
true and correct copy of the original Field Notes and Map of
the Webb-Lasalle Counties Boundary as the same appears of record
in my office in Volume 4 pages 12\114 of the County Court Min-
utes of Webb County, Texas.

Witness my hand and official seal, this 19th day of

April, A. D. 1944.

J. A. RODRIGUEZ, Clerk,
County Court, Webb County, Texas.
By _____ Deputy.



Webb Co Bdry Line 7
See li

RECEIVED
APR 28 1944
REFERRED TO MAP

7 (4)

WEBB COUNTY BOUNDARY LINES.

See Webb Co Bdry Line 4 for Correspondence

PART LA SALLE COUNTY N BOUNDARY
LINE AND WEBB CO. N. E. BOUNDARY
ALSO LA SALLE S BOUNDARY LINE
AND PART WEBB CO. N LINE.

SURVEYED MAY 5th TO 20th 1943
BY E. J. FOSTER, CO SURVEYOR WEBB CO.

REC. IN C.L.O. APR. 28th 1944
W^m Spitzer/S

Wm Spitzer
C.L.O.
1944

7125 7/17

SURVEYS CUT BY LINE SHOWING ACREAGE IN WEBB & LASALLE COUNTIES

SURVEY	GRANTEE	ACRES	WEBB Co.	LASALLE Co.	SURVEY	GRANTEE	ACRES	WEBB Co.	LASALLE Co.
636	H.C.G.N.R.R.	640	637.3	2.7	20	I.C.G.N.R.R.	320	212.0	108.0
1898	G.C.S.F.R.R.	550	373.0	177.0	21	"	640	478.0	162.0
125	P. CRUZ	320	319.5	0.5	22	"	640	508.0	132.0
1358	QUIRR & CASWELL	640	82.0	558.0	23	"	640	538.0	102.0
1357	"	640	117.7	522.3	24	"	640	566.0	74.0
637	D.S.C.F.	640	395.8	244.2	40	D.S.C.F.	640	350.0	290.0
495	S. & M.	640	123.0	517.0	2	G.D.G.C. & N.O.	640	342.0	298.0
496	"	640	153.0	487.0	1429	"	640	330.0	310.0
62	D.S.C.F.	640	183.0	457.0	1430	"	640	566.0	74.0
61	"	640	212.0	428.0	1431	"	320	101.0	119.0
66	"	640	115.0	525.0	102	C. DIAZ	1476	313.0	1163.0
1481	G.C. & S.F.R.R.	640	105.0	535.0	101	I. ARMSTRONG	989.8	83.0	906.8
148	J. POITEVENT	640	135.0	505.0	100	D. DOLAN	1476	280.0	1196.0
255	I.C.N.O.R.R.	640	400.0	240.0	265	J. THORNE	640	123.0	517.0
166	D. LEVEL	80	31.0	49.0	98	W.S. WILLIAMSON	1484	248.0	1236.0
297	A.C.S. LAND	2214	1483.0	731.0	97	F.M. HUNT	1476	235.0	1241.0
825	A.D.C.M.	320	197.0	123.0	96	J. HOUSE	2330	560.0	1770.0
827	I.C.N.O.R.R.	640	243.0	397.0	54	A.D.C.M.	430	340.0	90.0
829	A.D.C.M.	320	89.0	231.0	53	"	641	15.0	626.0
594	D.S.C.F.	640	444.0	196.0	40	J. POITEVENT	642	45.0	597.0
					41	"	642	93.0	499.0

MAP SHOWING THE DIVISION LINE BETWEEN WEBB & LASALLE COUNTIES, TEXAS AS RESURVEYED MAY 5-20, 1943 BY E. J. FOSTER

Licensed Land Surveyor and Surveyor named by Court of Webb County, Texas, to resurvey and place monuments on county line. SCALE 1" = 2000 VARAS

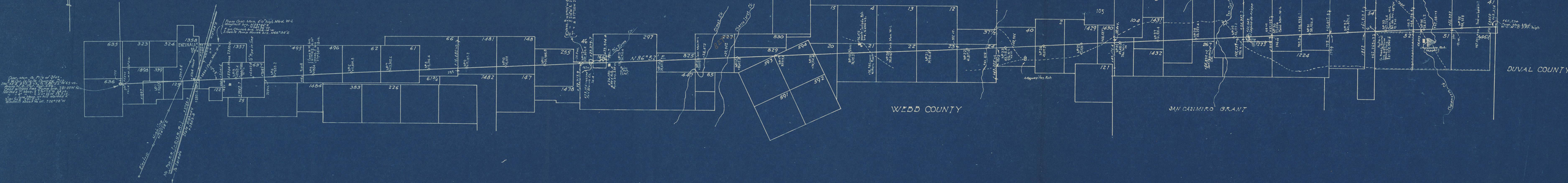
ALL SURVEY CORNERS FOUND AND STANDING AS ORIGINALS TIED TO COUNTY LINE. ALL ACREAGE CUT BY COUNTY LINE SHOWN IN TABULATION

State of Texas, County of Webb.

I, E. J. Foster, a Licensed Land Surveyor and County Surveyor of Webb County, Texas, do hereby certify that the above and foregoing survey was made by me on the ground and according to law, and that monuments and other marks noted hereon, were placed on the line.

Given under my hand and seal of office at Laredo, Webb County, Texas, this the 22nd day of May A. D., 1943

E. J. Foster
Licensed Land Surveyor and Surveyor of Webb County.

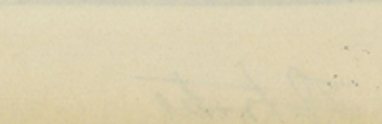


From Gov. Map, 40' high, Mkd. W-L
Woodmill Sec. 2, 3, 4, 5, 6, 7, 8, 9, 10
on County line, 108' 21" W
(S. 1/4 Sec. 2, 3, 4, 5, 6, 7, 8, 9, 10)

auth. Red Bull
going west

RECEIVED
APR 28 1944
REFERRED TO MAP

59819
SK



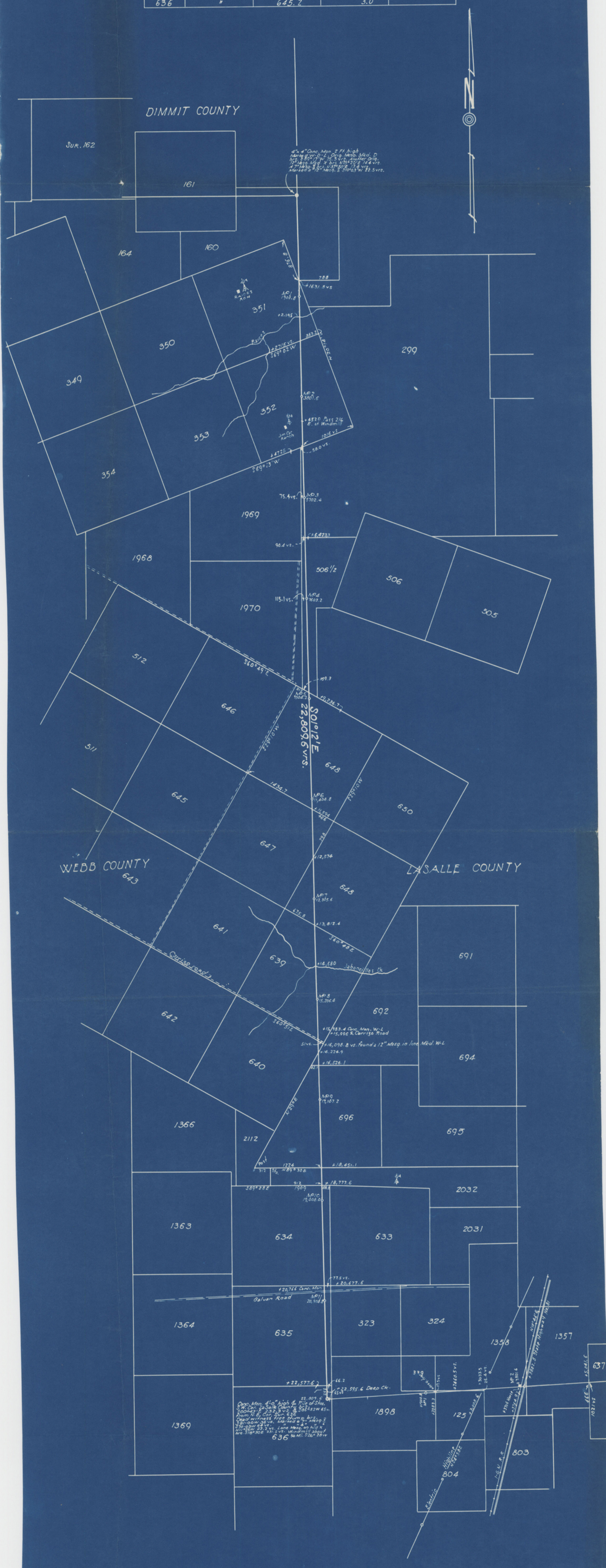
Webb Co. Entry Line 7

MAP
 OF THE DIVISION LINE BETWEEN
 WEBB & LASALLE COUNTIES
 AS RE-SURVEYED BY ORDER OF THE
 WEBB COUNTY COURT OF WEBB COUNTY
 TEXAS

SURVEYED BY E. J. FOSTER
 Licensed Land Surveyor
 County Surveyor of Webb County, Texas
 SURVEYED MAY 5-8, 1943
 SCALE 1" = 1000 VARAS

SURVEYS CUT BY LINE SHOWING ACREAGE IN COUNTIES

SURVEY	GRANTEE	WEBB	LASALLE	DIMIT
160		357.6	247.0	35.4
351	A. B. & M.	608.0	32.0	
352	"	409.5	230.5	
299	A. C. S. LAND	21.0		
506 1/2	H. STOUT	59.3		
648	S. & M.	319.0	375.6	
647	"	611.0	32.9	
649	"	66.7	576.3	
639	"	405.8	248.4	
640	"	5.0	641.0	
692	G. A. WELHAUSEN	21.9		
696	A. B. & M.	221.4	423.5	
2032	R. J. DAVIS	50.4		
634	H. & G. N. R. R.	613.0	27.7	
635	"	618.5	24.0	
636	"	645.7	3.0	



State of Texas,
 County of Webb.
 I, E. J. Foster, Surveyor of Webb County, Texas,
 do hereby certify that the above and foregoing map is a
 true and correct map of the survey of the west line of
 LaSalle, from the S. E. corner of Dimmit and N. E. corner
 of Webb, to the S. W. corner of LaSalle and an interior
 corner of Webb County.
 Given under my hand and seal of office
 at Laredo, Webb County, Texas, this the 22nd day of
 May, 1943.

Licensed Land Surveyor.

Faint grid pattern, likely a ledger or data table, with multiple columns and rows. The text is illegible due to fading.

SK1

RECEIVED
APR 28 1944
REFERRED TO MAP

Math C 849 File ②