

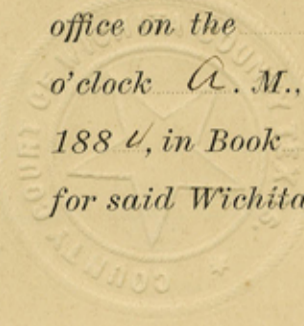
State of Texas }
Wichita County } Platt and field notes of
The boundary line between the
counties of Wichita and Wilbarger
according to survey made on the
14th day of March 1884, by order of
the respective commissioners Courts
of said Counties:

Beginning at the N.W. Cor. of Archer
County, a stone monument 791 Varas
South of a point in the North bound-
ary line of Section No 6 of Block No 7
for At & S. C. R.R. Co, which point is
 $633\frac{1}{3}$ N 72° E from the N.W. Cor. of said
Section No 6. Thence due North,
at 11400 varas, a stone marked W. VI, from
which an Elm 10" dia bears N. 63° W 5500s,
at 11467 cross Beaver Creek, at 12521 varas
cross the North line of survey No 24 of
Block No 5 for At & S. C. R.R. Co, 1172 varas
S 73° W from its N.E. Cor. At 15200
varas or eight miles, a stone on
N. Bank of Bluff Creek, marked W. VIII,
from which a Elm 12" dia bears
N $67\frac{1}{2}^{\circ}$ E. 55 Vrs. At 32178 cross Wichita
Falls and Vernon stage road, at
33740 cross Antelope Creek at 43700 varas
or 23 miles a stone marked W. XXIII, 101
varas N. of Farmers Creek, at 47500
varas or 25 miles, a stone on Bank of
Red River, a stone marked W. XXV. N.W.
Cor W. Co, the N.W. Cor. of Wichita
County and N.E. Cor of Wilbarger Co.
Which stone is 10660 varas West and
6519 varas North of the N.W. Cor. of

THE STATE OF TEXAS,
COUNTY OF WICHITA,

I, W. E. BROTHERS, Clerk of the
County Court, in and for said County, do

Certify that the above and foregoing *Field Notes of Plat*
with its accompanying Certificate of authentication, was filed for Record in my
office on the *3* day of *May* A. D., 188*4*, at *10.30*
o'clock *A.* M., and Recorded on the *5* day of *May* A. D.,
188*4*, in Book *G*, Page *389 + 390*, Record of *Suits*
for said Wichita County.



WITNESS my hand and seal of office, at office in Wichita
Falls, this *5* day of *May*
A. D., 188*4*.

W. E. Brothers

Clerk County Court, Wichita County, Texas.

By

E. P. Harris

Deputy Clerk,

Wichita Co Bdry Line 1
Filed for Record May 3/84

at 10.30 o'clock

W. E. Brothers per title
Wichita Co. Int.

By E. M. Warren Dpy

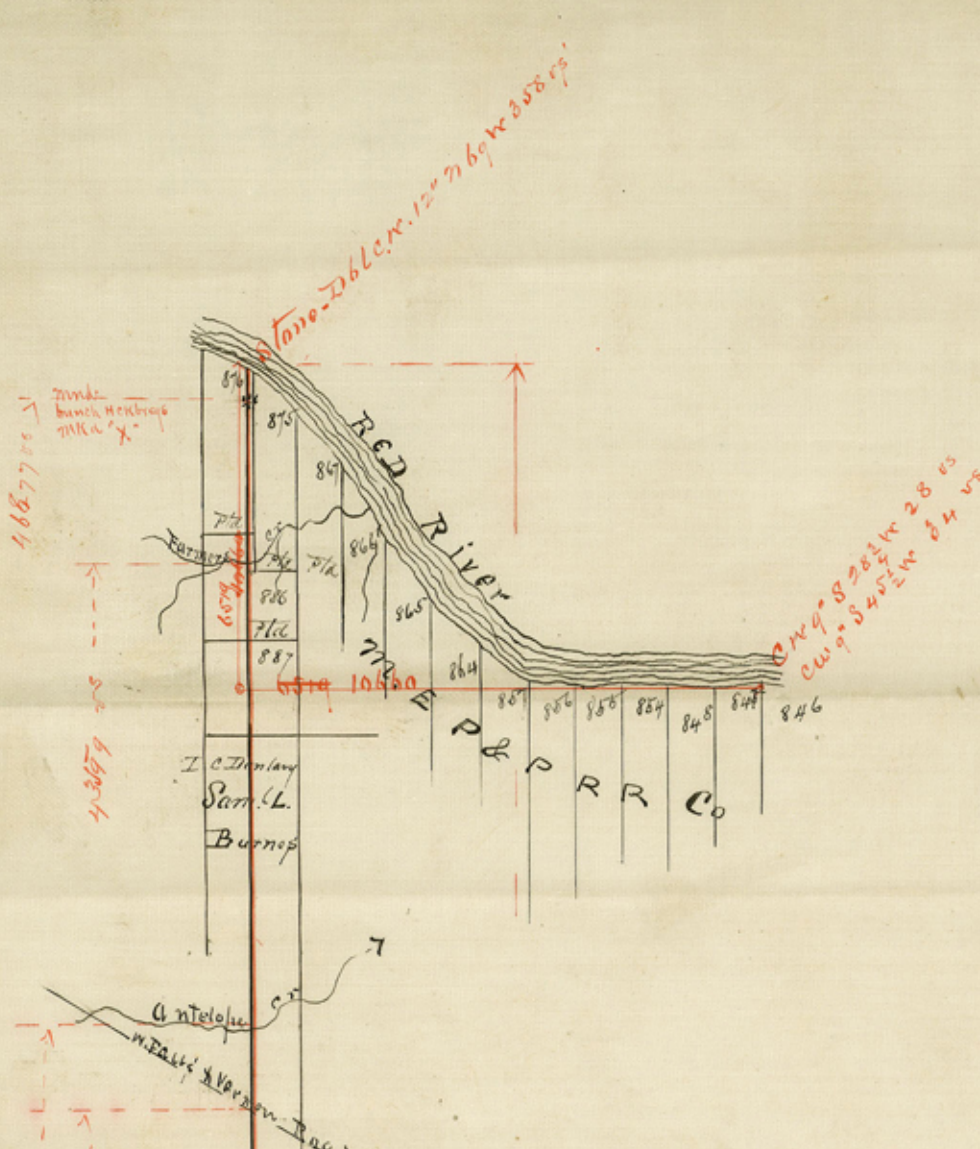
Examined and found cor-
rect - it seems though that
Wilbarger Co. was not represen-
ted in running said line.

May 21/84. C. W. Puffer.

ca. fr. 59898

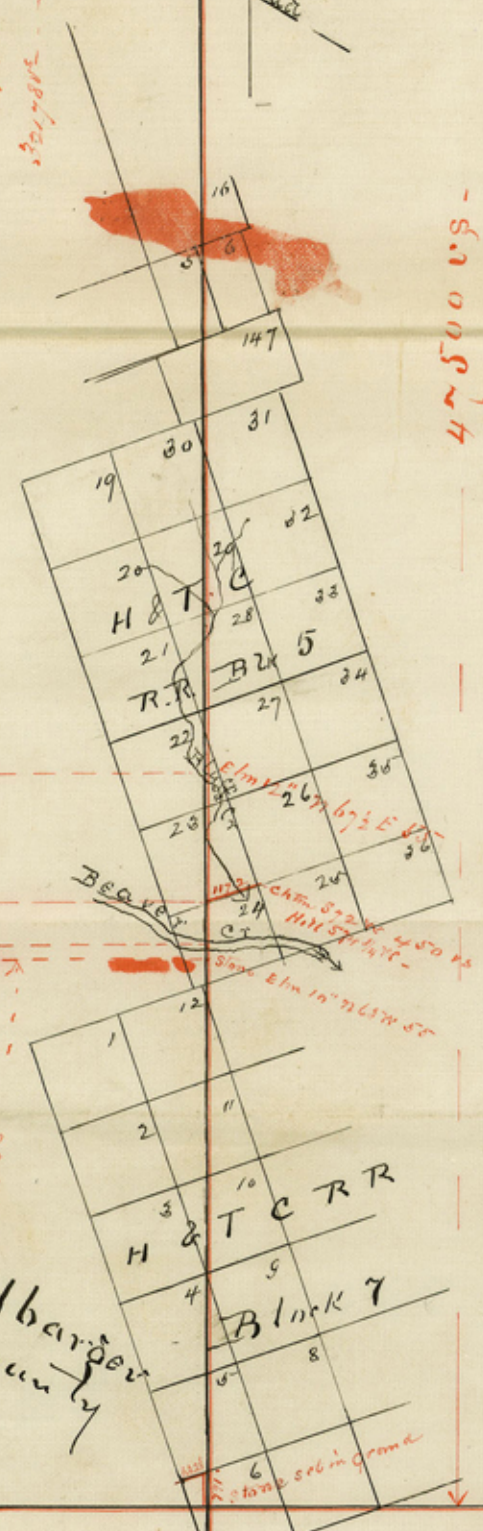
Wichita Co. 34 miles





Sketch of West boundary line
 of Wichita Co. Texas.
 var. $10\frac{1}{4}^{\circ}$ E.
 Jno W. Fields Sur. Co Texas
 May 1884

Filed for Record May 3 1884
 at 10.30 o'clock a.m.
 W. E. Brothers Co. clk
 Wichita Co. Tex
 By E. P. Warren Noty



Wilbarger
 County

Wichita County

Baylor Co

Archer Co