

Field Notes of the West Boundary Line
of Wichita County, Texas.

Beginning at the N. W. corner of Archer,
and S. W. corner of Wichita County;
a rock, 20 inches wide, marked A. Co.
N. W. cor., B. Co. N. E. cor., W. Co. S. W. cor.,
set in a mound of rocks.

Thence North, at 1900.8 varas, a rock, mk. W. 1.;
at 3801.6 us. a rock, mk. W. 2;
at 5702.4 us. a rock, mk. W. 3;
at 6689 us. the S. W. corner of survey No. 14,
Block No. 7, H. & F. C. R. R. Co., bears East 1693 us.;
at 7603.2 us. a rock, mk. W. 4;
at 9504 us. a rock, mk. W. 5;
at 11404.8 us. a rock, mk. W. 6;
at 11470 us. cross Beaver Creek;
at 12860 us. the N. W. corner of survey No. 25,
Block No. 5, H. & F. C. R. R. Co., bears East 1073 us.;
at 13305.6 a rock on west bank of Bluff
Creek, mk. W. 7. Crossing and recrossing
Bluff Creek, at 15206.4 us. a rock, mk. W. 8;
Still crossing same creek, at 17107.2 us.
a rock, mk. W. 9. Again crossing same
creek, at 19008 us. a rock, mk. W. 10.
At 20908.8 us. a rock, mk. W. 11;
at 22809.6 us. a rock, mk. W. 12;
at 24710.4 us. a rock, mk. W. 13;
at 26611.2 us. a rock, mk. W. 14;
at 28512 us. a rock, mk. W. 15;
at 30412.8 us. a rock, mk. W. 16;
at 32313.6 us. a rock, mk. W. 17;

1 at 34098 us. the N. E. corner of survey No. 37,
2 Block No. 13, H. & T. C. R. R. Co., bears West 4932 us.;
3 at 34214.4 us. a rock, mk. W. 18;
4 at 36115.2 us. a rock, mk. W. 19;
5 at 38016 us. a rock, mk. W. 20;
6 at 39916.8 us. a rock mk. W. 21
7 at 41048 us. the N. W. corner of survey
8 No. 855, M. E. P. & P. R. R. Co., bears East 6094 us.;
9 at 41817.6 us. a rock, mk. W. 22;
10 at 43600 us. cross Farmer's Creek;
11 at 43718.4 us. a rock, mk. W. 23;
12 at 45619.2 us. a rock, mk. W. 24;
13 at 47520 us. 3 rocks, set on the bank of
14 Red River, marked W. xxx., N. W. cor. W. Co.;
15 Bunch of Hackberry bushes, on sand hill,
16 bears South 623; three prong Cottonwood
17 bears N. 69 W. 358 us.. The N. E. corner
18 of the Eli Phillips survey, No. 820, bears
19 North 909 us., W. 4323 us.. Variation 10° E.
20 Blocks No. 7 & No. 5, H. & T. C. R. R. Co., will
21 fit their calls best by running at a
22 variation of 9° 30', and Block No. 13, for
23 same Company, has to be run at a
24 variation of about 6° 15'. All other sur-
25 veys are assumed to be on 10° variation.

26 Surveyed July 30th 1887.

27 J. A. Warren, Surveyor
28 for Wichita Co., Texas.

47520
97048
6472

1 State of Texas $\frac{3}{3}$ J. C. C. Reid Clerk of
2 Wichita County $\frac{3}{3}$ the County Court in and for
3 Wichita County, Texas Certify that the foregoing
4 2 pages of said Deed Notes of the West. Boundary
5 line and Plat of Wichita County contain a
6 true and correct copy as it appears of record
7 in Book K page ~~203~~ of Deed Records
8 for said County.

9 Given under my hand and seal of Office
10 this 5th day of August A. D. 1887

11 C. C. Reid Clerk
12 County Court Wichita Co Texas
13
14
15
16
17
18
19
20
21
22
23
24
25
26
27
28
29
30
31
32

Wichita Co

32 31 30 29 28 27 26 25 24 23 22 21 20 19 18 17 16 15 14 13 12 11 10 9 8 7 6 5 4 3 2 1

Western Line

Filed August 8th 1887

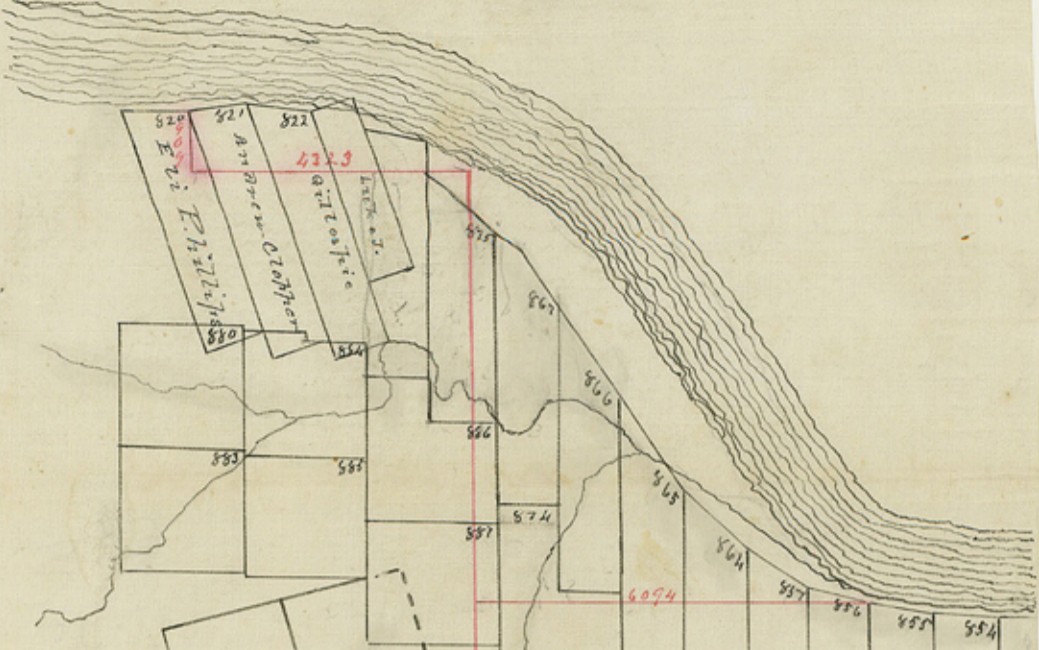
Nov. 28th 1887 see affidavit of Co judge for notification to Com^{rs} Co of Wilbarger Co

Examined, approved and applied

Dec. 27th 1887
Filed for Record August 14th 1887 at 11 o'clock. a. m

C. C. Reid c. c. c

Wichita Co Texas



820
821
822
823
824
825
826
827
828
829
830
831
832
833
834
835
836
837
838
839
840
841
842
843
844
845
846
847
848
849
850
851
852
853
854
855
856
857
858
859
860
861
862
863
864
865
866
867
868
869
870
871
872
873
874
875
876
877
878
879
880
881
882
883
884
885
886
887
888
889
890
891
892
893
894
895
896
897
898
899
900

54
53
52
51
50
49
48
47
46
45
44
43
42
41
40
39
38
37
36
35
34
33
32
31
30
29
28
27
26
25
24
23
22
21
20
19
18
17
16
15
14
13
12
11
10
9
8
7
6
5
4
3
2
1

54
53
52
51
50
49
48
47
46
45
44
43
42
41
40
39
38
37
36
35
34
33
32
31
30
29
28
27
26
25
24
23
22
21
20
19
18
17
16
15
14
13
12
11
10
9
8
7
6
5
4
3
2
1

54
53
52
51
50
49
48
47
46
45
44
43
42
41
40
39
38
37
36
35
34
33
32
31
30
29
28
27
26
25
24
23
22
21
20
19
18
17
16
15
14
13
12
11
10
9
8
7
6
5
4
3
2
1

54
53
52
51
50
49
48
47
46
45
44
43
42
41
40
39
38
37
36
35
34
33
32
31
30
29
28
27
26
25
24
23
22
21
20
19
18
17
16
15
14
13
12
11
10
9
8
7
6
5
4
3
2
1

54
53
52
51
50
49
48
47
46
45
44
43
42
41
40
39
38
37
36
35
34
33
32
31
30
29
28
27
26
25
24
23
22
21
20
19
18
17
16
15
14
13
12
11
10
9
8
7
6
5
4
3
2
1

54
53
52
51
50
49
48
47
46
45
44
43
42
41
40
39
38
37
36
35
34
33
32
31
30
29
28
27
26
25
24
23
22
21
20
19
18
17
16
15
14
13
12
11
10
9
8
7
6
5
4
3
2
1

54
53
52
51
50
49
48
47
46
45
44
43
42
41
40
39
38
37
36
35
34
33
32
31
30
29
28
27
26
25
24
23
22
21
20
19
18
17
16
15
14
13
12
11
10
9
8
7
6
5
4
3
2
1

54
53
52
51
50
49
48
47
46
45
44
43
42
41
40
39
38
37
36
35
34
33
32
31
30
29
28
27
26
25
24
23
22
21
20
19
18
17
16
15
14
13
12
11
10
9
8
7
6
5
4
3
2
1

54
53
52
51
50
49
48
47
46
45
44
43
42
41
40
39
38
37
36
35
34
33
32
31
30
29
28
27
26
25
24
23
22
21
20
19
18
17
16
15
14
13
12
11
10
9
8
7
6
5
4
3
2
1

54
53
52
51
50
49
48
47
46
45
44
43
42
41
40
39
38
37
36
35
34
33
32
31
30
29
28
27
26
25
24
23
22
21
20
19
18
17
16
15
14
13
12
11
10
9
8
7
6
5
4
3
2
1

54
53
52
51
50
49
48
47
46
45
44
43
42
41
40
39
38
37
36
35
34
33
32
31
30
29
28
27
26
25
24
23
22
21
20
19
18
17
16
15
14
13
12
11
10
9
8
7
6
5
4
3
2
1

54
53
52
51
50
49
48
47
46
45
44
43
42
41
40
39
38
37
36
35
34
33
32
31
30
29
28
27
26
25
24
23
22
21
20
19
18
17
16
15
14
13
12
11
10
9
8
7
6
5
4
3
2
1

54
53
52
51
50
49
48
47
46
45
44
43
42
41
40
39
38
37
36
35
34
33
32
31
30
29
28
27
26
25
24
23
22
21
20
19
18
17
16
15
14
13
12
11
10
9
8
7
6
5
4
3
2
1

54
53
52
51
50
49
48
47
46
45
44
43
42
41
40
39
38
37
36
35
34
33
32
31
30
29
28
27
26
25
24
23
22
21
20
19
18
17
16
15
14
13
12
11
10
9
8
7
6
5
4
3
2
1

54
53
52
51
50
49
48
47
46
45
44
43
42
41
40
39
38
37
36
35
34
33
32
31
30
29
28
27
26
25
24
23
22
21
20
19
18
17
16
15
14
13
12
11
10
9
8
7
6
5
4
3
2
1

Scale 3000 yards
to one inch.

Wilbarger Co.

Baylor Co.

Archer Co.