

Williamson Co Bdry Line 1

*Williamson and
Milam Co. Line.*

Fieldnotes of a survey of $84\frac{1}{2}$ acres of land, being the West half of Survey
N^o. 3 of section N^o. 4. of the subdivision of University league N^o. 9.

Situated in Cooke County on the waters of Red river about 17 miles
N 29° E from Gainesville.

7

The State of Texas }
 County of Williamson } Be it Remembered
 that there was begun and held on the 27th
 day of September AD 1882, at the court
 house in the city of Georgetown a Special
 Term of the Commissioners court for Williamson
 County, Present and presiding Hon Geo W.
 Glascock County Judge of said county -
 Commissioners J. J. Milham, John H.
 Williams, Dr John Threagille and H. B.
 Sheppard, Levi Pennington clerk of said
 court, and J. M. Tucker Sheriff when the
 following proceedings were had -

W. Morelle the county surveyor submitted
 his report to the court on the running out
 of the county boundary line between Williamson
 and Milam counties which was ordered by
 the court to be recorded in the minutes -
 of the court (which is in words and figures
 as follows - to wit: - Surveyors Report of
 the Survey of the Williamson & Milam Co
 Line -

The State of Texas } To the Hon^{ble} Commis-
 sioners court of }
 County of Williamson }
 Williamson County I W. Morelle having
 been appointed by the Commissioners court
 of Williamson County, to survey the Boundary
 line between the counties of Williamson &
 Milam County in connection with the
 Surveyor appointed by Milam County
 beg leave to submit my Report -

Williamson Co. Bdry Line

2d

I met Mr Jas A. Howlett the "Surveyor of Milane County" for this particular work and together we proceeded at the time designated August 28, 1882 on the ground and began the survey at the S. E corner of the Thos Almaso Survey known as the Post Oak Island Survey Original bearings found on the ground, after running some distance say 1400 varas N 71° E, We adjusted our instruments together and found that there was a considerable difference in their readings: We also found that Mr Howlett had made a departure of 41 varas to the mile "North" of the old and plainly marked boundary line of said counties which Mr Howlett agreed was "beyond dispute" the county line, We traced this line made connections on it - set mile posts on it - and worked together harmoniously. We found where the S. E corner of Williamson County had been originally made in a grove of trees where all of the trees in a circle had been scalped showing that the line stopped there. I will here state that Mr Howlett objected to the place for the corner, We then found the line running N 19° E traced it some distance with my instrument and found a plainly marked line and at about $\frac{1}{4}$ of a mile from the corner found a Large Spanish Oak tree with the letters "MZ" together with the blaze of county line upon it: Mr Howlett then expressed himself as being satisfied and we retraced this,

3

line to the intersection of the South line ^{and}
then planted the S. E. corner. We ran it 190
ft and found the line plainly marked & at
about one and one half miles we found a tree
immediately on the line marked W M which
tree was pointed out to Mr Howlett and the
Chain men, we worked together on this line
made connections and planted the 4 mile
post. It being afternoon Saturday Mr How-
lett expressed his desire to suspend work
until Monday as he wanted to go home I as-
sented and we suspended work until the
following Monday, when we met at the 4
Mile Post. Mr Howlett then stated to me that
he could not go on with me on the line, 'I was'
and had been tracing together for 12 miles that
he did not think he was conforming to the
order of Milam County and expressed a
desire of ignoring all the old land marks
and running a new line as he had done one
year ago. I called his attention to Section 1"
acts 1879 chapter 129 page 137 and the
law regulating the manner of ascertaining
the Boundaries of Counties also the numerous
Articles governing and Controlling Surveyors
in retracing old surveys; were also appli-
cable in this case of County Boundaries
as well as the boundaries of Land Grants
and should be adhered to inasmuch as the
line had been traced and found very plainly
marked for 12 miles and was marked on
ahead. I could not agree with him upon

an erroneous action in the matter: There was no dispute or disagreement between us as to where the old County line was at all: Mr Howlet was satisfied that I was retracing and unmarking the original boundary line and so expressed himself in the presence of witnesses Chairman and hands assisting in the Survey. I will here state that Mr Howlet's departure from this old line was about 41 varas or more "West" to the mile and that he had no evidence of an old line whatever and also stated to me that he did not find the old line one year ago when he surveyed and marked this new line which I found to be entirely wrong, he Howlet "having run with an improper adjustment of his compass - He separated & I continued the survey making connections retracing the old line which I found plainly marked all through the timber and on the scattering trees found close to the line on the Mosquit prairie, At the crossing of Creau Branch 15 miles and 1600 varas N 19° W from the S E corner we found the line plainly marked and here Mr John Jordan of Williamson County and John Hamlin of Milam County came to me on the line and went with me to within 1/2 mile of the N. E corner of the County I will also state that I passed two trees North of the San Gabriel one at less than a mile and the other about a mile $3/4$ from the Gabriel which were

plainly marked showing that I was re-tracing the old line at 20 miles I planted a large cedar post and marked the same N. E. cor N. line. I then ran N 65° W 3 miles & 468 varas to a point S 19° W of the Juse Mumford League and arrived 80 varas South of the Post planted by the Surveyor of Bell County and myself when we surveyed the line of Bell and Williamson County Posts were planted at each mile connections with surveys were made so the relative quantity of each survey along the line in either County can be readily determined: I will also add that the entire line of 20 miles N 19° W was through timber, mesquit bushes, and fields and no doubt enough was lost in the measurement to account for arriving South of the corner of Bell County, I herewith attach Field notes of the Line and the connections of same & map, I also here give the names of witnesses who will and are able to give testimony as to the facts in this case John Gordon, John Hamlin, W. F. Echols B. J. Daughter, F. M. Gentry, J. M. Bennett & W. A. Scruggs, The five latter were employed in the survey of the line and took particular notice at my request of the old line wherever marked. I have no hesitancy in saying that the old line traced by me was the original line between Williamson & Milam Counties and during my experience as a practical Surveyor I never found a

6th

line of its length more accurately made, my reason for saying the above is that there are no surveys along the South line of the County running N 71° E to confuse a surveyor neither are there any surveys on the East line running N 19° W until about 14 miles from the corner where the Pollard Surveys are reached I will further state that with the variation 9° 50' E used by me in retracing this line I also retraced the boundaries of the original Surveys along the line in making connections and found "that adjustment correct" and necessary to retrace the old land lines also. Witness my hand this 26th day of September 1882 -

C. Morrell Surveyor
Williamson County Texas

Sworn to & subscribed before me this 26th day of September 1882 Levi Dunnington Clerk
County Court Williamson Co Texas

The State of Texas } Filed notice of a survey
County of Williamson } of the Boundary line
between Williamson and Milam Counties be-
ginning at the S.E. corner of the Thos A
Grews survey (known as the Post Oak Island
Survey) original bearings found thence N 71°
E at 5000 varas intersect the West line of
the Wm Nichols Survey at 5 miles + 1237
varas intersect the S line of the Henry Looke
2318 varas N 70° W from its S.E. corner at 7
miles + 408 varas intersect the E line of Henry
Looke 1869 varas N 20° E from its S.E. corner

Williamson Co Bdy. line #1

7

at 8 miles the S.E. corner plant post for
 S.E. corner, Thune N 14° W at 900 varas in-
 tersect the N line of M. V. Swearingen Survey
 at a point N 71° E 800 varas from his N. corner
 at 1340 varas intersect Milau County line
 Course S 60° W "Beginning on Boyce and running
 S 60° W" at 1 mile + 1400 varas intersect the
 N line of the Cook League at a point 820
 varas N 70° W from the N.E. corner of same
 at 3 miles + 590 varas the East line of the
 Horison Own at 5 miles + 610 varas intersect
 the North line of said own at a point N 70
 W 2403 varas from the N.E. corner of same
 at 7 miles + 1026 varas intersect the S.E.
 line of the Geo Foley at a point 7½ varas N
 20 E from its inside S.E. corner, at 8 miles
 + 1200 var enter Brushy bottom at 8 miles
 + 1840 intersect the N line of the Foley Survey
 at a point 1737 varas N 70° W from its
 N.E. corner and intersect the Lined S
 line at a point 4180 varas S 70° E from its
 S.W. corner at 9 miles + 900 varas center of
 Brushy creek at 11 miles + 228 var cross
 the D & G. N. R. 70 ½ miles West of Station
 "Thornauld" at 12 miles + 940 varas intersect
 the West Line of the Justo Lined Grant
 and the E line of the Le. Power at a point
 625 varas S 20° W from the N.E. corner of said
 Power Survey at 12 miles + 990 varas Turkey
 creek at 13 miles + 857 var intersect the W
 line of the A. Vogt and the E line of the
 Sampson & Hamrick Survey at a point

Williamson co. Brushy line #1

520 varas $S 19^{\circ} N$ from the N.E. corner
 of said Dampson & Henrich Survey at 13 miles
 + 1269 varas intersect S line of the Amos
 Pollard at a point 439 varas $N 71^{\circ} E$ from
 the S.W. corner of same at 14 miles + 733
 varas intersect the N line of said Pollard
 at 439 varas $N 71^{\circ} E$ from its N.W. corner
 and intersects the S line of another Survey
 in the same name at a point 198 varas
 $N 71^{\circ} E$ from its S.W. corner at 15 miles +
 197 varas intersect the N line of said
 Pollard and the S line of the J. W. Harvey
 Survey at a point 198 varas $S 71^{\circ} E$ from
 the S.W. corner of said Harvey survey at
 15 miles + 1600 varas cross Ocean Branch
 at 16 miles + 250 varas intersect the
 South line of the Gas Boadberry survey
 198 varas $N 71^{\circ} S$ from its S.W. corner at
 17 miles Post on bank of Sew at 17 miles
 + 65 varas Bank of the San Gabriel River
 at 17 miles + 105 varas cross said River
 at 17 miles + 954 varas intersect E line of the
 Pedro Garya Grant at a point 87 varas
 $S 20^{\circ} N$ from its N.E. corner at 17 miles +
 1028 varas intersect the N line of the
 Pedro Garya & S line of the Miguel Davilla
 Grants at a point 70 $\frac{1}{2}$ varas $N 70^{\circ} N$ from
 corner of same at 20 miles Post for the
 N.E. corner of Williamson County. Thence
 $N 65^{\circ} N$ cross Alligator creek at 7 mile
 Post at 2 miles + 40 varas cross Alligator
 creek N line at 2 miles + 420 varas

9

cross Alligator 5th time at 2 miles + 1080
 varas cross Alligator creek 6th time at 3
 miles + 233 varas set apart at a point
 2 miles + 1870 varas S 19° W from the S. E.
 corner of the Jesse Mumford League for
 the corner of Bell and Milam Counties =
 Survey begun August 28th 1882 & completed
 Sept 9th 82 = Chain man W. F. Echols
 P. F. Slaughter & J. A. Howlett, Assistants
 J. M. Gentry, J. W. Bennett & W. A. Seruggs
 I do Morrell Surveyor of Williamson
 County do hereby certify that the foregoing
 field notes of the Survey of Original
 County line of Williamson & Milam Counties
 are correct that the said County line was
 found by me upon the ground plainly
 marked and that the foregoing Survey
 was made according to "Law regulating
 the Survey of County Boundaries, attached
 hereto is a map showing said line &
 Survey connections varied 9° 07' E -
 Given under my hand at Georgetown Texas
 this 26th day of September A.D. 1882

W. F. Morrell Surveyor
 Williamson County

Filed September 24th 1882

Levi Pennington Clerk
 By W. E. Chapman Dy

It is further ordered ^{by the court} that the County
 clerk furnish the commissioners court
 and County Judge of Milam County

Williamson Co. - B. G. W. #1

with a certified copy of said report and it appearing to the court that the County Surveyor of Milam County did not join in said report it is therefore ordered by the court that our County Surveyor C. Morelle proceed to meet with the Commissioners court of Milam County and explain to said court his said report and confer with said court as to the adoption of said report and in case said court did not adopt said report our County Clerk is hereby instructed to make out a certified copy of C. Morelle's Report without delay and forward said certified copy of said report to the Commissioners of the Genl Land Office -

The State of Texas

County of Williamson } I Levi Demington
 County Clerk in and for said County & State
 do hereby certify the foregoing on this and the nine preceding pages to be a true and correct copy of the Report of the Survey of the line between Williamson and Milam Counties, by C. Morelle County Surveyor of Williamson County and also of the order of the court on a hearing of said report - as the same appears of record in the minutes of said Commissioners Court

Volume A. Pages 446 to 451 inclusive

Given under my hand and seal of office this

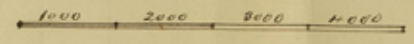
Oct 12th 1882 =

Levi Demington Clerk of said Co
 By W. E. Chapman Dep

Williamson Co. Bldg. Linn #1

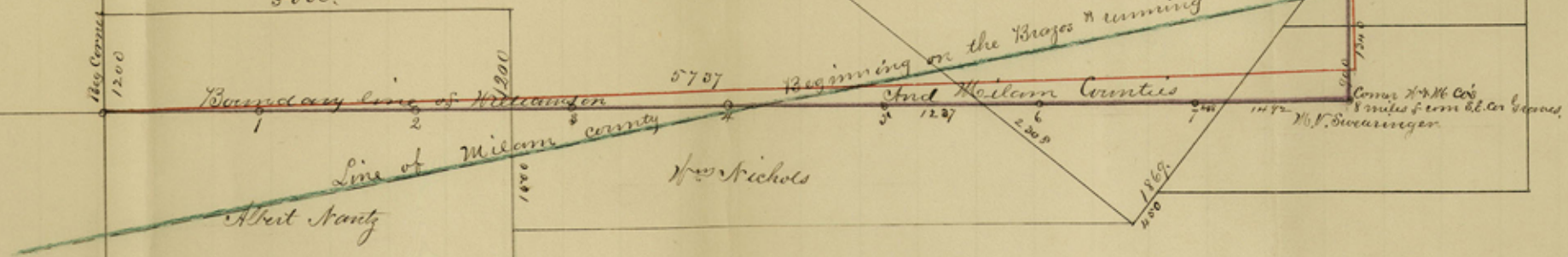
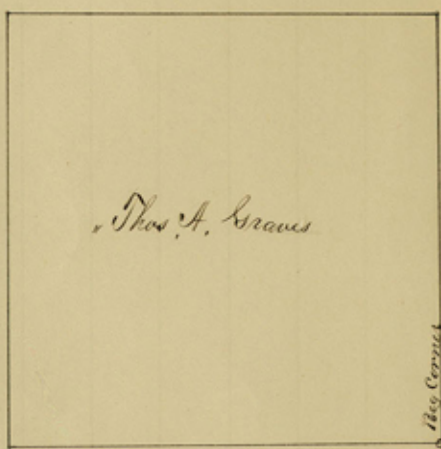
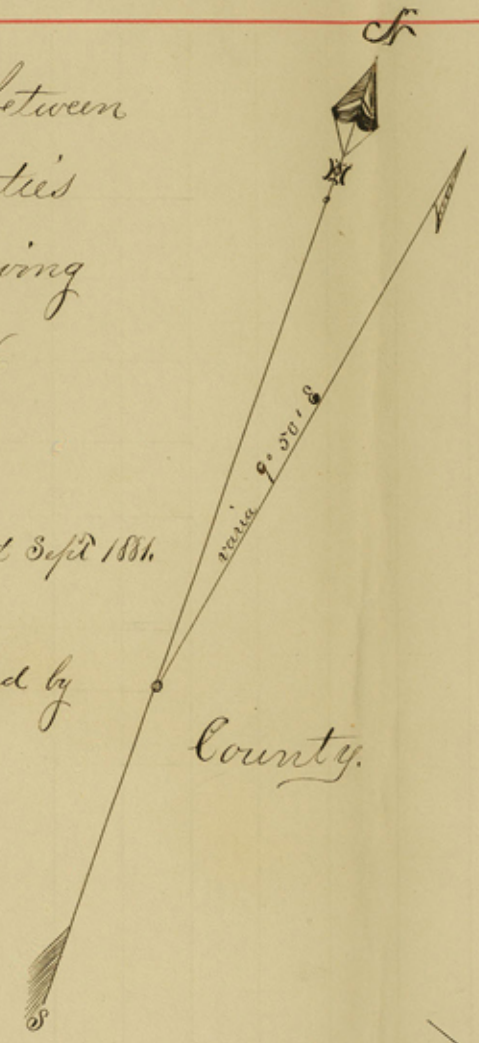
Plat of the Survey of the Line between
 Williamson And Milam Counties
 Begun August 28th 1882. Showing
 Connections with original Surveys.

Scale 2000 varas one inch



Red line indicates the line run by Jas A Howlet Sept 1881.
 for County Line.

Blue line indicates the original line as retraced by
 C. Moore Sept 1882. Williamson



Harrison Owen

Geo. F. Guthrie

Henry Cooke

Wiley Harrison

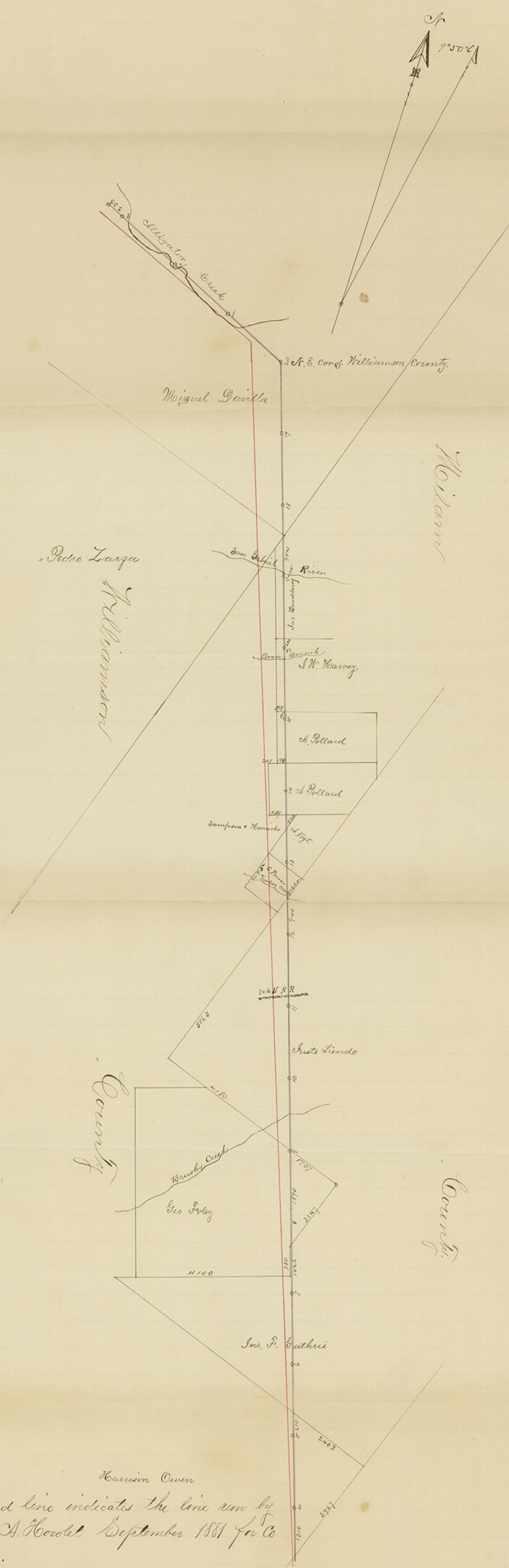
Geo. W. Wray

Wm. Nichols

Milam County.

Williamson Co. Plat No. 1

cont. 54986



"Red line indicates the line run by Jas. A. Morelet September 1881 for Co line.
 Blue line indicates the original line as retraced by C. Morelet September 1882.

Plot of the Survey of the line between Williamson and Milam Counties commenced August 28th 1882 and completed Sept^r 9th 1882.
 Varia 9° 50' E.

C. Morelet Surveyor Williamson Co.

Williamson
MS
Milam

9-27-1882

Rec'd Oct 19 in
7.00
Main
Orange