

Fieldnotes of a resurvey of
the old County line between
Bell and Williamson Counties
Filed in the Gen. Land Office
February 17th 1898.

C. W. Pressler
Examined and approved

February 21st 1898

C. W. Pressler.

\$ 3.⁰⁰ Raw

The State of Texas, : In re, Bell and Williamson
Williamson County. : County Boundaries.

To the Honorable the County Courts of Bell and Williamson Counties:-

The undersigned special surveyors, R. H. Montgomery for Williamson county, assisted by Prof. A. S. Howren, and Ed. T. Rucker, for Bell county, assisted in part by Mr. John W. Turner, in obedience to the order of said Courts, beg leave to submit the following report:-

On the 6th. day of July, 1897, Messers. Montgomery, Rucker and Howren met by appointment at the corner of Bell and Williamson Counties on the south prong of Salado creek, where we found the original county line, very plainly marked for a distance of 1600 vrs. on old post oak, elm and live oak timber, and we also found a planted stone in said line at about the proper distance to have been set for the 20th. mile point from the corner of Bell and Milam counties. In making examinations of the evidences here found we were assisted by Capt. James Rumsey, an old and experienced surveyor, and it was agreed unanimously, that the marks were made in making the original survey of Williamson county in 1848.

From the termination of these marks in Craft's pasture, we ran a "transit line", approximating the course from the marked line, to the corner of Bell and Milam counties, making careful search for land marks along the entire distance. We found the same character of marks on the timber in Donohoe's creek bottom, about two miles east of Bartlett, which we re-examined on the return survey in company with Mr. John W. Turner, and satisfied ourselves that the marks were made by the original surveyors of Williamson county

At the corner of Bell and Milam counties we were met by Mr. John P. Looney, Ex-County Surveyor of Milam county, an experienced and accomplished surveyor who assisted in tracing and identifying the original line of Milam and Williamson Counties, which is a continuation of Bell and Williamson county line for three miles and 300 varas. We found the line plainly marked nearly the entire distance, and the same characteristic marks, viz: blazes and hacks on the trees both immediately on the line and upon either side of the line. And it being abundantly evident that the line marked on timber of Salado, Donohoe and Alligator creeks is the same, and also the line run by Peter G. Rucker and C. Morell in 1880, and having ascertained the true bearing of said line to be N. 65 W. at 9 degrees, 24 minutes east variation we made the following re-survey of said line:-

Beginning at the corner of Bell and Milam counties, at a point S. 19 W. 2 miles and 1742 vrs. from the S. E. Corner of Jesse Mumford league, set a cedar post from which a mesquite, 6 in. diam. bears N. 40 E. 26 vrs., a mesquit, 8 in. diam. bears S. 4 1/2 E. 22 3/10 vrs., and a mesquit 6 in. diam. bears N. 72 1/2 W. 17 64/100 vrs., all said trees marked X. Thence N. 65 W. at 307 vrs. re-set the 20th mile post, in line of wire fence on Eugene Fowler's farm. Continued, and at 1873 vrs. set heart mesquit post in turnrow in said farm, for 19th mile at 1900 vrs. a point. At 1900 vrs. set a cedar post in J. B. Knight's farm, for 18th mile. At 4700 vrs. from county corner, or at 600 vrs. from 18th mile post, intersect the west line of M. Davilla grant, 4720 vrs. from its S.W. corner, and 50 vrs. S. 20 W. from the N.E. corner of M. F. DeGraffenreid survey No. 107, at 1900 vrs. set a cedar post in farm. At 1947 vrs. set a cedar post for the 18th mile, on east side of Bartlett and Davilla road

At 1090 vrs. intersect east line of John Robinson survey, S. 25 1/2 W. 410 vrs. from its N. E. corner; at 1180 vrs. cross Donohoe's creek, at 1900 vrs. set a cedar post for 15th. mile, about 80 vrs. S. E. from a well in elm grove. From this post an elm 12 in. diam. bears N. 53 3/4 W. 58 3/10 vrs., and an elm 20 in. diam. brs. S. 80 1/2 W. 80 vrs. At _____ vrs. intersect west line of John Robinson, 265 vrs. S. 19 W. from its N. W. corner, at 1900 vrs. set cedar post in farm. At 1897 1/2 vrs. a cedar post set in East line of Block No. _____ in John T. Bartlett's addition to the town of Bartlett, 105 1/2 feet S. 19 W. from the N. E. corner of said Block. From this post at 440 vrs. intersect the center of M. K. & T. R. R., 4 feet 3 inches S. of the center of Clark street, at 1461 1/2 vrs. intersect the west line of Block No. _____ in Pietzsch's 3d. addition to Bartlett, 249 1/2 feet N. 19 E. from the S. W. corner of said Block, at 1846 vrs. set a cedar post on north side of Bartlett and Indian Creek road, and in west side of 3rd .class road leading north from said road; at 1900 vrs. 12th. mile point. At 613 vrs. intersect the west line of W. C. Wilson and east line of Wm. McKnight survey, 1140 1/2 vrs. N. 19 E. from the S. W. corner of Wilson and S. E. corner of McKnight surveys, at 1900 vrs. set a cedar post for 11th. mile in small pasture on A. Hope survey, from which a gum-elastic brs. N. 42 1/2 W. 55 8/10 vrs., a hackberry brs. N. 45 W. 54 vrs., and a gum-elastic brs N. 59 W. 45 vrs crossed east line of Hope 157 vrs. S. 19 W. from its N. E. corner. At _____ vrs. cross west line of Hope survey, 20 vrs. S. 19 W. from its N. W. corner and 891 vrs. N. 19 E. from the S. E. corner of Moses Allen survey, at 1870 vrs. set a cedar post in east line of D. H. Stockton's farm near the S. E. corner of same, for 10th mile; at 1900 a point. At _____ vrs. ~~intersect~~

intersect west line of Moses Allen and east line of Peter Kinsey league, 1195 vrs. from S. E. corner of said Kinsey and S. W. Corner of Allen surveys; at 1900 vrs. mile point, at 2000 vrs. set a cedar post on east margin of ravine in meadow for 9th. mile. At 1840 vrs. set a cedar post in turnrow for 8th. mile. At 1900 vrs. set a large stone in turnrow, about 100 vrs. south of tenant house on Brook's farm on Peter Kinsey league. At 835 vrs. intersect west line of said Kinsey and east line of Matthew Moss survey, 1732 vrs. N. 19 E. from S. W. corner of Kinsey and S. E. Corner of Moss surveys, at 1900 vrs. set a cedar post for 6th. mile in pasture on hill. At 284 vrs. intersect west line of said Moss survey and east line of Ed. Breeding, S. 19 E. 584 vrs. from the west corner of Moss and 449 vrs. from N. E. corner of Breeding; at 1900 vrs. set a large stone for 5th. mile and at 2000 vrs. set a cedar post in wire fence, crossing south line of John Talk survey S. 71 W. 465 vrs. from its S. E. corner and N. E. corner of E. Breeding survey. At _____ vrs. intersect the west line of John Talk survey 495 vrs. S. 19 E. from N. W. corner of Talk and N. E. corner of I. N. Lambert surveys; at 1900 4th. mile point from which a cottonwood brs. S. 23 1/2 W., another brs. N. 8 1/2 W. and another brs. S. 8 3/4 W., and a cedar post set on bank of a ditch brs. S. 65 E. 43 2/10 vs. At 775 set a cedar post on west line of Saml. Wolfenbarger survey on east side of road leading from Prairie Dell to Taylor and in east line of W. B. McClelland survey, 542 vrs. S. 19 E. from his N. E. corner; at 1560 vrs. intersect the south line of Wm. Connell 1/3 league, S. 71 W. 561 vrs. from its S. E. corner, at 1800 vrs. set a cedar post on N. W. side of Belton and Georgetown road, at 1900 3rd. mile point. At 1900 set cedar post for 2nd. mile. At. 676 vrs. m

intersect the west line of Wm. Connell and east line of E. Davis league, 2051 vrs. N. 19 W. from Connell's S. W. corner and Davis' S. E. corner, at 1900 vrs. set a cedar post for 1st mile post in Craft's pasture on E. Davis survey. At 316 vrs. set a cedar post on Salado and Florence road at 13 miles from Florence, at 1144 vrs. center of Bone Hollow, at 1562 vrs. found a stone planted in old marked line, about 20 miles from corner of Bell and Milam counties; at 1684 vrs. cross an old road; at 1690 vrs. cross a ravine; at 1900 vrs. center of Salado creek, a corner of Bell and Williamson counties.

Wherever we found timber adjacent to the line we marked the trees on the side next the line with four hacks and those immediately in the line we marked with blazes and hacks above and below the blazes

In conclusion we would say that on account of the excessive heat from July 6th. to 17th., inclusive, we found it very difficult at times to control the instruments on account of the expansion causing the screws to "back", and rendering it necessary to repeat and occasionally to re-repeat our readings at every station. The instruments used were a Blatner Transit, by Montgomery and an improved Gurley combined Transit and Level by Rucker. At the town of Bartlett we think we made a severe and entirely satisfactory test of both the instruments and chainmen by running, Montgomery from the 13th. and Rucker from the 12th. mile posts and closing on a line running at an angle of 6 degrees from our course and varying less than two inches at the point of intersection. The trigonometrical calculations were verified by Messrs . Howren and Turner and proven by actual survey. We feel confident

that the work has been accurately done, and as there were four surveyors at each point on the line where there were marks to be found, and they were unanimous in the opinion that they were the "footsteps of the original surveyor", we are confident that the boundary between the two counties is established as it was originally surveyed.

We submit herewith maps of the entire line, showing the connections with original grants, from which the Assessors' Abstract may be corrected, and also a map of the two tiers of City Blocks in the town of Bartlett that are intersected by the county line. The exact portions of individual lots lying in either county can readily be "interpolated" from the connections given, in case such information should be at any time desired.

All of which is respectfully submitted.

August 9th., 1897.

R. H. Montgomery

Special Surveyor for Williamson County.

A. S. Howren Assistant.

Ed. T. Rucker,

Special Surveyor for Bell County.

J. W. Turner. Assistant.

Filed August 13, 1897.

J. W. Hodges,

Clerk.

The State of Texas, :

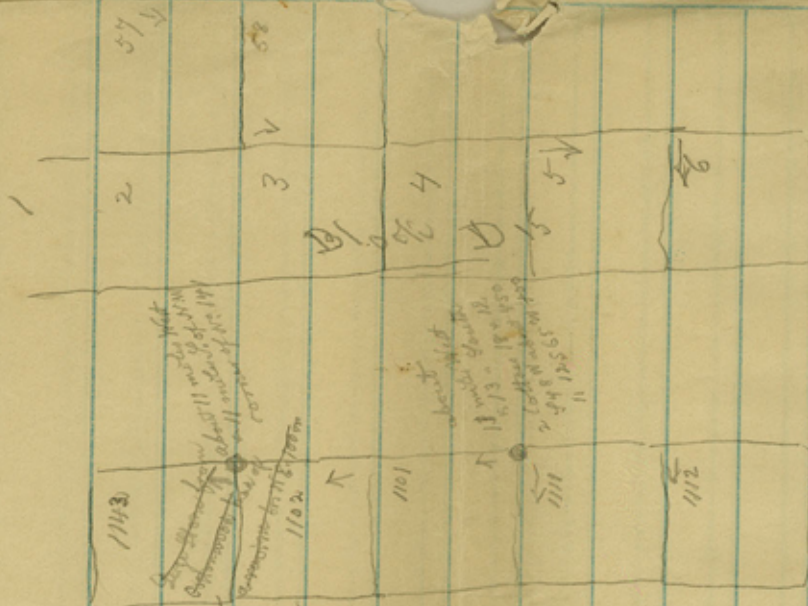
County of Williamson. :

I, J. W. Hodges, Clerk of the County Court and Ex-officio Clerk of the Commissioners' Court, Williamson County, Texas, do hereby certify that the above instrument is a true and correct copy of the report of R. H. Montgomery, Special Surveyor for Williamson County, A. S. Howren, Assistant; Ed. T. Rucker, Special Surveyor for Bell County, J. W. Turner, Assistant, In re, Bell and Williamson County Boundaries, as appears of record in Vol. 9 pages 23 to 28 of the Commissioners' Court of Williamson County, Texas.

Given under my hand and seal of office at Georgetown, this the 15th. day of February, A. D. 1898.

J. W. Hodges
.....

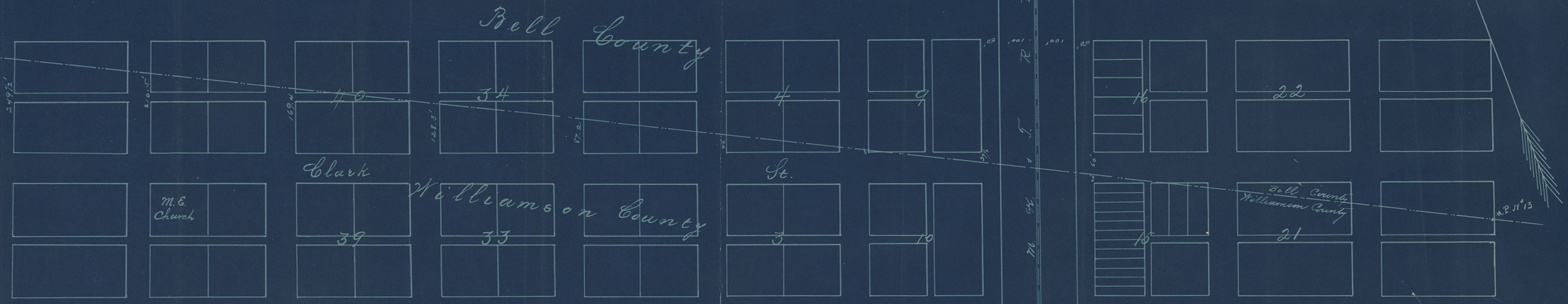
Clerk County Court, Williamson County, Texas.



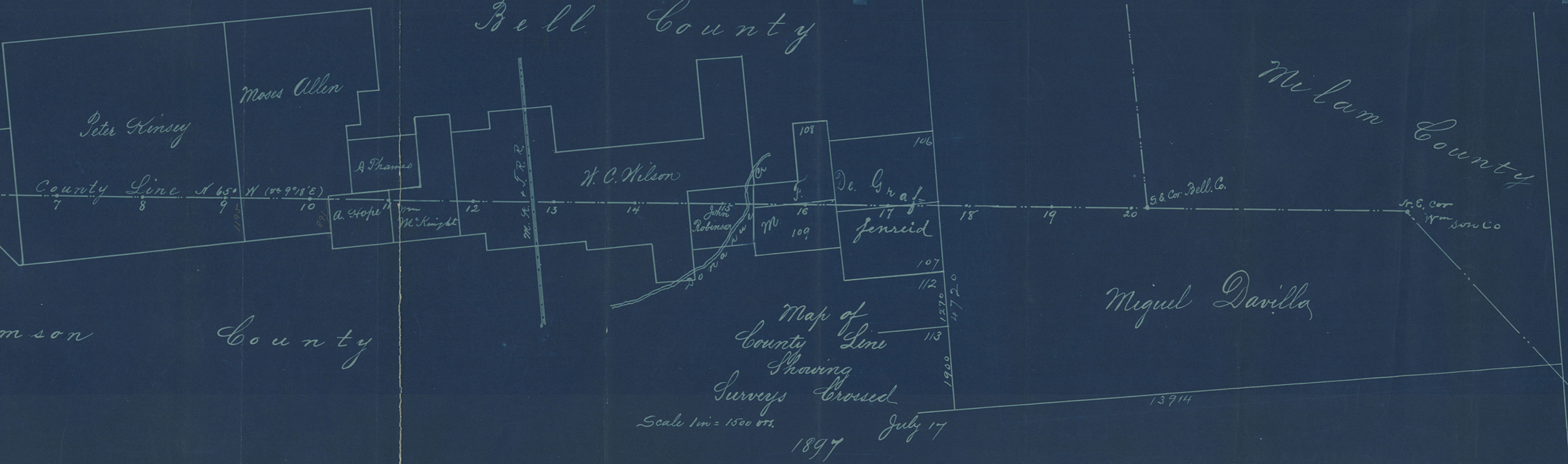
M.P. 12
 County line — N. 65° W. (or 90° 18')

Map of
 County Line
 Through
 The Town
 of
 Bartlett

Scale 1 in = 150 ft.
 1897 July 17th



Surveyed by
 Ed. T. Rucker Surveyor for Bell Co.
 John W. Turner Asst. " "
 R. H. Montgomery Surveyor for Williamson Co.
 A. G. Stouren Asst. " "
 July 6th to 17th
 1897



Map of
 County Line
 Showing
 Surveys Crossed
 Scale 1 in = 1500 ft.
 1897 July 17

8

Williamson Co Bary Line 4

Bell and

Williamson

16 15 14 13 12 11 10 9 8 7 6 5 4 3 2 1 18 17