

Regular Term September 28th 1874.

Be it remembered that on this, Monday, the 28th day September A.D. 1874. a regular term of the County Court was begun and held at the Court House in the town of Floresville, in and for the County of Wilson

Present— John Berney Presiding Justice, A McClung Justice of the Peace for precinct No 3. J. W. Dickey Justice of the Peace for precinct No 4. A G Pickett Clerk and N. de la Zerda Sheriff— When the following proceedings were had.

{ x { x { x { x }

W. J. Sutherland, surveyor of this County this day presented in open Court a report of the survey of the boundary line between Wilson and Atascosa Counties as heretofore ordered, which report was approved by the Court and ordered to be spread upon the minutes, and is in the following words & figures to wit:

To the Hon. County Court of Wilson County

In obedience to your order requiring me to survey the boundary line between Wilson and Atascosa Counties, beginning on the second Monday in August 1874. I proceeded at the time and to the place designated in your order for the commencement of the survey. Where I met Genl L Colcohour, a member of Atascosa County Court, and claiming to represent his County in settling the boundary line

4.

question. It was agreed between us that we should accept the south corner of the James Burt survey No 1420 as the north east corner of Atascosa County and the north west corner of Wilson County, that being the point represented on the Bexar and Atascosa Maps as said corner and on a map of Wilson County certified by the Commissioner of the General Land office to be correct in the location of the same according to the field notes of the respective Counties. We also agreed to be governed in the survey by the bearing of the County line (as shown on the maps) with the lines of original individual surveys, running it as nearly as possible as it is marked on our maps, and I have the honor to submit to your Honorable body the following field notes of the survey.

Beginning at a point set by Montague, Deputy District surveyor of Bexar District and W. Longworth at that time surveyor of Wilson County for the corner of Bexar, Atascosa and Wilson Counties said post being at the south corner of the James Burt survey and from it a post oak tree 18 inches in dia. bears N. $50^{\circ}26'$ E. $18\frac{1}{2}$ varas and a black jack tree 10 inches in dia. bears S. $68^{\circ}35'$ W. $8\frac{1}{4}$ varas, and a post oak tree 14 inches in dia bears N. $2^{\circ}8'$ E. $24\frac{1}{2}$ varas. Thence S 39° E. at one mile set a stake in edge of Chapparel at 2 miles pass out of Chapparel at 2 miles 500 varas cross grape vine water hole in the east branch of the Lucas

at 4 miles & 300 varas pass between A. M. Mair's house and work shop and enter the prairie, at 5 miles pass about $\frac{1}{2}$ mile west of south from John Prop's house at 5 miles 200 varas cross Line oak hollow a branch of the Lucus at 6 miles 1700 varas enter open prairie, at 7 miles 700 varas enter Ellis pasture, at 9 miles 550 varas cross Los Prietos and pass about 500 varas east of S. water hole, at 10 miles 75 varas emerge from pasture, at 10 miles 650 varas enter Mitchell and Presnall's pasture, at 13 miles 200 varas cross Burego Creek about $\frac{1}{2}$ mile N. of Mitchell's house, at 13 miles 1100 varas leave Mitchell and Presnall's pasture, at 14 miles enter prairie intersperced with Mesquite brush, at 15 miles 1840 varas cross post oak creek 16 miles 700 varas to the S.W. corner of the John M Wade survey No 223 (this should ^{as} by map be even 16 miles) at 20 miles and 225 varas I placed a Post.

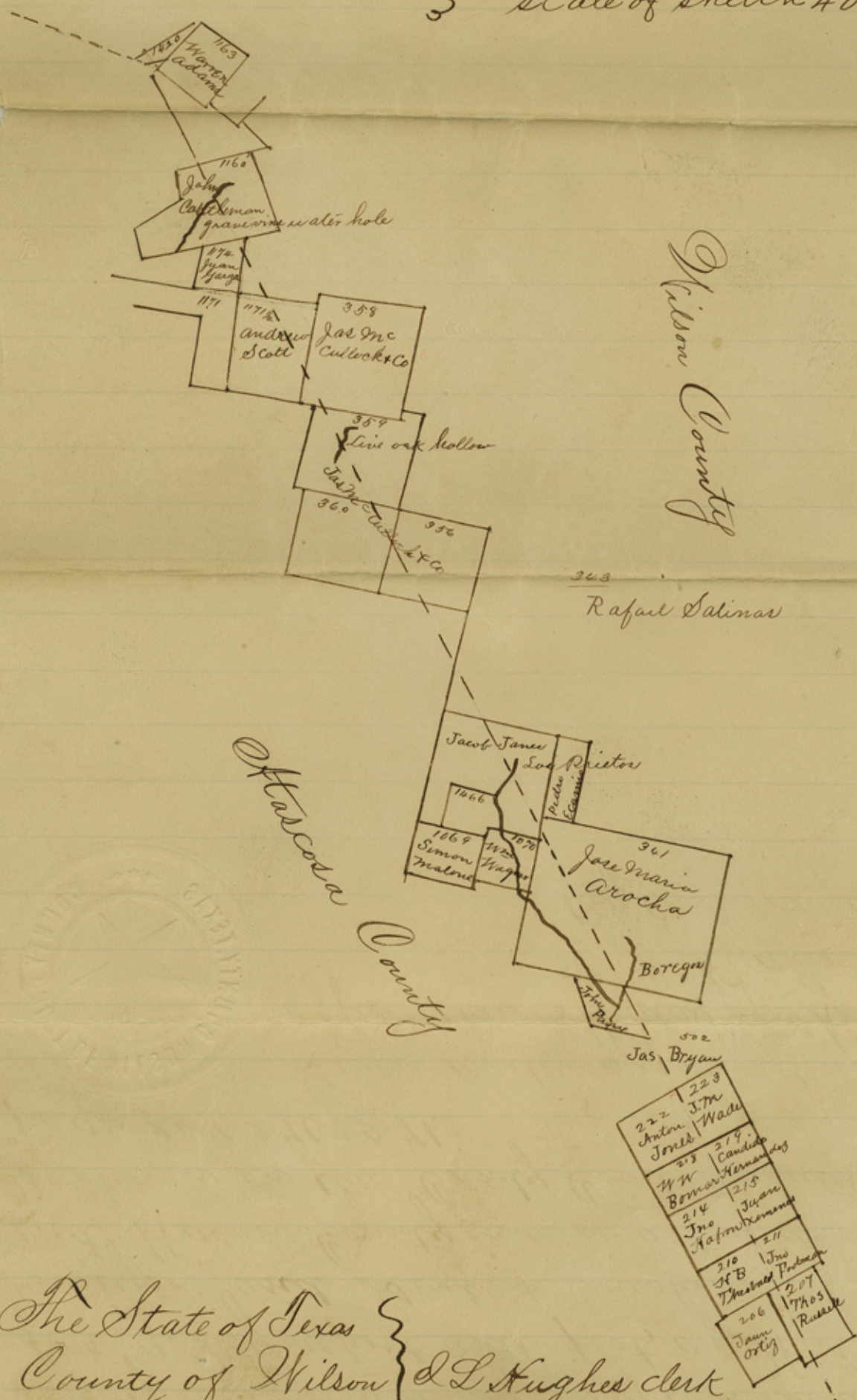
I W. J. Sutherland, County surveyor of Wilson County, do hereby certify that the above field notes are correct and that I tested the correctness of the survey by tracing lines of surveys from the Tordilla Hill in Karnes County proving the same to be in conformity to the Map of the Counties interested

W. J. Sutherland C.S.W.Co.

Magnetic Variation and used in taking bearings of corner $9^{\circ} 5' E$.

Wilson Co

and in measuring the line $9^{\circ}34'E$.
Scale of sketch 4000 varas to inch



Wilson County

Atascosa County

The State of Texas }
 County of Wilson } D. L. Hughes clerk
 of the County Court in and for said

County + State do hereby certify that the above and
fore going report and plot, of W. F. Sutherland
surveyor and Genl L Colchoun, of Atascosa
and Wilson County line, is a true and correct copy
as shown on the County Court Minutes, Book A
pages 269, 270 + 271.

Given under my hand and seal of
office this 18th day of April A.D. 1884

L P Hughes clk CC & Co
By E. D. Mayer Deputy

2/ County Line between
Atascosa and Wilson

Received and filed June 24/84

Commissioner

only signed by Surveyor
of Wilson Co.

Atascosa &

Wilson

Rec'd June 24/84

Mayer

Wilson Co. Bd. of Line 2