

THE STATE OF TEXAS /
" COUNTY OF WOOD "

FIELD NOTES OF THE W.B.L. OF WOOD COUNTY, TEXAS,
MADE BY ORDER OF THE WOOD AND RAINS COUNTY
COMMISSIONERS' COURTS:

Beginning on the North Bank of Sabine River, at Collins Ferry, a Rock 3 feet long, set two feet in ground for corner, from which a Sweet-gum bears South 1-8/10 vrs., marked W.C. and R.C., and the East end of bridge which crosses Sabine, bears South 9 $\frac{1}{2}$ West, 20 vrs, said corner being 412 vrs South and 186 vrs East from the N.W.corner of John Delap Survey: Thence North 6 $\frac{1}{2}$ deg West, crossing John Delap N.B.L. 180 vrs East from N.W.corner of same and crossing N.B.L. R.Sunnigas Survey 520 vrs West from N.E. corner said survey and crossing S.B.L. N.Gilbert survey 161 vrs East from S.W.corner said survey at 1900-8/10 vrs or 1 Mile a post set on South Bank of Crooked Branch.

2nd. Mile

At 160 vrs said Crooked Branch at 220 vrs same, at 400 vrs same, at 530 vrs same, at 600 vrs same, at 650 vrs same, crossing T.A.Erwin N.B.L. 38 vrs West from N.E.corner said survey, the same being the N.W.corner of N.Gilbert survey on South Boundary Line of F.McMahan survey, said crossing being 1030 vrs East from F.McMahan S.W.corner at 870 vrs leave above named Branch, at two Miles a Post in field.

3rd. Mile.

At 1665 vrs creek, C-S.W. at 3 Miles a post in field.

4th. Mile.

At 1440 vrs the center of the Texas Short Line Railroad, crossing J. Simpkins S.B.L.795 vrs East from S.W.corner of same and 2195 vrs East from F.McMahan N.W.corner at 4 Miles Post in J.Simpkins Survey.

5th. Mile.

Crossing J.Sherman S.B.L. 608 vrs East from S.W.corner of same at 5 Miles Post in said Sherman Survey.

6th. Mile

At 496 vrs center of the Mineola and Greenville Branch of the M.K.& T Ry., at 6 Miles Post in Prairie in said Sherman Survey.

7th. Mile.

Crossing J.Sherman N.B.L. 335 vrs East from N.W.corner of same at 1113 vrs a Branch, course S.E. crossing same several times and crossing the N.B.L. of H.M.C.Hall Survey, No.64, 276 vrs East from N.W.corner of

Wood Co Entry Line 6

M

enter 60180

same, leaving said Branch at 1882 vrs and at 7 Miles Post in Joe Burleson's field in J.Crawford.Survey.

8th. Mile.

At 760 vrs creek C- N.E., crossing S.B.L. of the H.M.CHall survey, No. 61, 40 vrs East from the S.W.corner of same at 8 Miles Post in said Hall Survey.

9th. Mile.

At 994 vrs Creek C- E, crossing N.B.L. Willis Parker Survey 153 vrs West from N.E.corner of same, the same being S.E.corner J.B.Stovall Survey of 482 acres and N.W.corner H.M.C.Hall Survey No.61, at 9 Miles Post in J.B.Stovall Survey.

10th.Mile.

At 1000 vrs creek, C- E, at 10 Mile Post in Stovall Survey.

11th. Mile.

Crossing Geo. Scull S.B.L. 372 vrs West from S.E.corner of same and 447 vrs West from the N.W. corner J.B.Stovall Survey and 674 vrs E from N.W.corner of same, at 11 Miles Post in Geo.Scull Survey.

12th. Mile.

At 937 vrs creek, C- N.E., at 12 Miles Post in Geo.Scull Survey.

13th. Mile.

At 170 vrs a Slough, at 515 vrs Lake Fork, C- E, crossing S.B.L. I. Reed Survey No.29, 600 vrs West from S.E.corner of same and 55 vrs East from Geo. Scull N.W.corner on I.Reed S.B.L. at 13 Miles Post in I.Reed Survey.

14th. Mile.

Crossing O.Engledow S.B.L. 68 vrs E from S.W.corner of same and 820 vrs W from I.Reed N.E.corner at 14 Miles Post in E.B.L. of Sell's Survey.

15th. Mile.

Crossing O.P.Sell's N.B.L. 65 vrs W from N.E.corner of same, the same being the S.E.corner of W.D.Langham Survey, at 15 Miles Post in field in W.D.Langham Survey.

16th. Mile.

At 940 vrs S.W.corner of Log-house, crossing W.D.Langham N.B.L. 326 vrs West from N.E corner of same and S.E.corner J.N.Bradshaw Survey, at 16 Miles Post in Bradshaw Survey in Post Oak Flat.

17th. Mile.

At 337 vrs Branch, C- E. at 420 same, C- E at 690 vrs corner for N.W. corner of Wood County, 40 vrs S $6\frac{1}{2}$ E from a point on G.Jones S.B.L., said point being 816 vrs West from the Jones S.E.corner, and 494 vrs West from J.N.Bradshaw N.E.corner, said corner put up by J.T.Craddock Surveyor for Wood County, Texas, and J.L.Gilbert Surveyor for Hopkins County, Texas on the 28th day of October, 1880, at 1550 vrs another corner set up for the N.W.corner of Wood County, Texas, a Post marked R. on West side, H on N.E.side and W on S.E. side, from which a Post Oak 14 inches in diameter bears North 21 E $6-6/10$ vrs, a Red Oak 16 inches in diameter bears N. 56 E $30-2/10$ vrs. This corner is 814 vrs North and 928 vrs West from the S.E.corner of the G.Jones Survey.

The acres of land of all surveys, through which county line runs, found to be in Wood County, is as follows, to-wit;

John Delap Survey	72 acres
R.Sunnigas Survey	34 acres
B.B.B.& C.R.Co. Survey	16 acres
N.Gilbert Survey	300 acres
T.A.Erwin Survey ..X.....	000 acres
F.McMahan Survey	28501/10 acres
J.Simpkins Survey	404 acres
J.Sherman Survey	1105-6/10 acres
H.M.C.Hall Survey No.64.....	598-1/10 acres
J.Crawford Survey No.62	1226-8/10 acres
H.M.C.Hall Survey No.61 ..X.....	639 acres
Willis Parker Survey	21 acres
J.B.Stovall Survey	164-7/10 acres
Geo. Scull Survey	338-3/10 acres
I.Reed Survey No. 29	256-7/10 acres
O.Engledow Survey ..X.....	4425 acres
O.P.Sells Survey ..X.....	3 acres
W.D.Langham Survey	73-3/4 acres
J.N.Bradshaw Survey	108-5/10 acres
G.Jones Survey ..X.....	132 acres

Commenced on May 27th, 1909 and ended June 22nd, 1909.

All Mile posts being Bois'darc 5 feet long, set three feet in ground and marked R. on west side and W. on East side.

G.W.Cowan, Special Surveyor
for Wood County, Texas.

S.J.Stewart, Special Surveyor
for Rains County, Texas

Variation of needle, N. 7-1/3 East.

Course of Line-- N. 6-1/2 W.

Magnetic Course of line N. 13-5/6 W.

(E.Jones
C.C. (Joe Simpkins
(Alvin Cowan
Markers (Blue Garrett.

THE STATE OF TEXAS /
" COUNTY OF WOOD " /

We, G.W.Cowan and S.J.Stewart, acting as Surveyors
duly appointed and qualified as such, do hereby certify that the above
and foregoing described Survey was made by us upon the ground according
to law, that the marks, natural and artificial, are truly described
therein, and that the acres of land of each and every survey through
which the line runs are properly credited to Wood County, Texas, that the
Plat hereto attached is true and correct, and that the last described
corner was found and renewed by us, and that the same appears to us to be
on the South Boundary Line of Hopkins County, as surveyed by D.O.Norton
in the year 1848, and as shown and marked upon the official Map for
wood County, Texas.

Commencing on May 27th, 1909, and ending on June 22nd, 1909.

IN TESTIMONY WHEREOF, witness our official signatures.

G.W.Cowan Special Surveyor
for Wood County, Texas.

S.J.Stewart Special Surveyor
for Rains County, Texas.

Examined and approved in open court on this 1st day of July, 1909.

O.H.Rodes Co. Judge Rains Co.
W.H.Horsley Com. Prect No. 2
C.H.Tiny " " " 3
J.H.Porter " " " 4

R.M.Smith Co. Judge Wood Co.
J.M.Kitchens Com. Prect No. 1
J.M.Ray " " " 2
R.W.Faulk " " " 3
Z.C.Alvis " " " 4

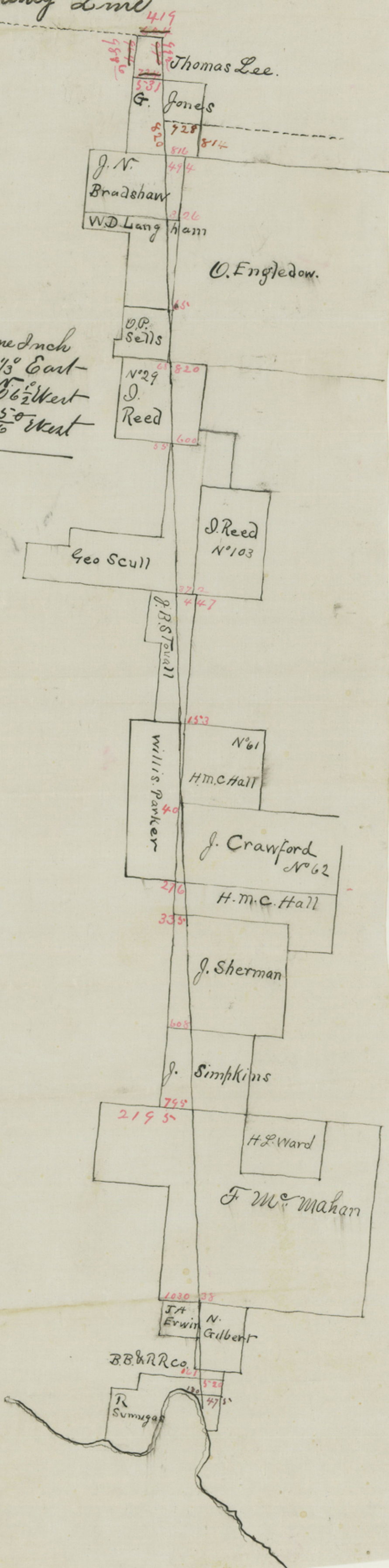
Filed August 10th, 1909.

J.W.Corley County Clerk wood Co. Texas.

M³

Plot of Wood and Rainier County Line

Scale 2000 fms = One Inch
 Variation of Needle $7\frac{1}{2}^{\circ}$ East
 Course of County Line $N\ 6\frac{1}{2}^{\circ}$ West
 Magnetic Course $N\ 5^{\circ}$ West



M4

THE STATE OF TEXAS/

" COUNTY OF WOOD " /

I, J.W. Corley Clerk of the County Court within and for the county and State aforesaid, do hereby certify that the above and ^{and Plat} foregoing is a true and correct copy of the field notes of the county line between Wood and Rains Counties, as made by G.W. Cowan and S.J. Stewart Special surveyors for wood and Rains Counties on the 22nd day of June, 1909, and which was approved by the commissioners court of this county on the 12th day of August, 1909, as the same appears of record in the minutes of the said commissioners' court in Volume "F" on page 59, 60 & 61.

Witness my hand and the seal of the County court, at office in the town of Quitman, on this the 14th day of August, 1909.

J.W. Corley County Clerk,

Wood County, Texas.

By

H. M. Ladd

Deputy.

Wood Co Bdry Line 106

Certified Copy
Boundary Line
between
Wood & Raines
Counties.

Field Notes
and
Maps.

Filed in Gen. L. O. Aug. 16 '09
J. T. Robinson
Commissioner.

Abstract corrected in vol. 34

MP
cont. 60186