

A Survey of the Eastern Boundary Line of  
Zavalla County same being Western boundary  
of Frio County by Geo Myers appointed by the  
County of Zavalla and W Crauch appointed  
by the County of Frio.

On the Ground we found  
that two corners had been established for  
the N. W. cor of Frio N. E. cor of Zavalla  
S. W. cor of Medina and S. E. cor of Uvalde

The first corner we found appears from records  
to have been established  
in the year of 1838 for the above mentioned point by  
J. W. Cummings appointed by Uvalde and Wm  
Meyers of Medina County & of record in the County  
Clerks office of Medina County in book 4 p. 6 pages  
559 560 & 561 recorded the 10<sup>th</sup> day of May  
1839 This corner is a post set in a sack made

from which a L. O. marked T 15' to S 65<sup>th</sup> W 140<sup>th</sup>  
L. O. 16' S 76<sup>th</sup> W 134 vs L. O. cut 7 16 S 57<sup>th</sup> W 190<sup>th</sup>

L. O. 4 24' S 63<sup>th</sup> W 271 vs these bearing stands  
of a road that it runs up the south side of  
the Frio river and is 1778 South E 79<sup>th</sup> vs East of  
the N. E. cor of survey No 371 in the name of  
Luciana de La Garza same being N. W. cor of survey  
No 372 Maria de Las Santos of Gill.

The second corner appears to have been  
established on the third day of June 1852 by  
W. W. Hayes a surveyor appointed by the County  
of Frio to establish the North boundary of  
said County where it is of record is not known  
to the surveyor of Zavalla County in Mr Hayes  
notes he states the cor stands 584 vs South E  
1543 vs West from the N. E. cor of survey No 372

Zavalla Co Bdry Line 23

M. Las Santos of Gill. this Cor is a post  
marked M and the N E side F and the S E side marked  
L and the W side marked U and a W side for which  
a forked cross 16' thro N 86<sup>3</sup>/<sub>4</sub> W 104 vs do marked C  
3 pr 20' thro S 49<sup>1</sup>/<sub>4</sub> W 136 vs do marked E 14' F 14 S 14<sup>1</sup>/<sub>2</sub> E  
119<sup>1</sup>/<sub>2</sub> vs The Surveyor of Frio County refusing  
to recognize the Corners marked by Cummings  
and Meghlin as the N W Cor of Frio County and  
the Surveyor of Zavalla refusing to recognize  
the Cor of Mark Day Haynes as the N E Cor of  
Zavalla County the Surveyor of Frio County  
claiming that his County was entitled to 30  
miles south of corner marked by Haynes the  
Surveyor Zavalla claiming to a point thirty  
miles south of the Corners marked by Cum-  
mings & Meghlin as the recognized Corners by  
Zavalla we then agreed to intersect the two  
lines and mark the point of intersection by  
setting a post with bearings and from this point  
south 30 miles to establish a corner for  
N W corner of Frio County and report the matter  
to the Commissioners of the General Land Office  
at a variation of 9<sup>20</sup>' East we found the Cor  
established by Haynes to be 548 vs South  
and 244 vs N 89<sup>50</sup>' E of the Corner established  
by Cummings & Meghlin at a point where the  
lines intersected we set a post marked M and  
N E side F and S E side E L and west side for which  
a 4 pr 18' L. O. 18' marked M N 57<sup>3</sup>/<sub>4</sub> E 35<sup>3</sup>/<sub>5</sub> vs L. O. 15' F 14<sup>1</sup>/<sub>2</sub> E  
114<sup>3</sup>/<sub>5</sub> vs L. O. 20' F 16<sup>3</sup>/<sub>4</sub> W 24 vs L. O. 15' F 8<sup>1</sup>/<sub>2</sub> E  
10<sup>1</sup>/<sub>5</sub> vs Hence South at a variation of 9<sup>20</sup>' East  
at 340 vs found of a hill at 1900 vs being a mile

Zarrillo Co. Eding low #22

Set 2 small posts in a mound and 4 pits.

Thence South at 7300 vs road course  
N E runs to Blackalpers & Newtons set a post on  
North side 9000 vs branch at 1900 vs being 2 miles  
a large stake from a L O mound 10' bro S 4 1/4 W  
36 vs 1100 mound F 10' bro N 33 1/4 E 5600 vs

Thence South at 1900 vs being 3 miles  
post 8' by 4 1/4 ft high set in a large mound mound  
F an East side and 7 an west side

Thence South at 1315 vs set a post on  
S side of a road at 1900 vs being 4 miles post  
7' by 4 ft set in a mound & 4 pits

Thence South at 900 vs set a post  
on S side of a road that runs up north of Elm  
Creek mound F an E side & 7 an the west side at 10540 vs  
2 Elm trees on the N bank of Elm creek at 1896 vs  
at 1856 N line of No 677 a cap as at 1200 vs E of any it, 26 8/10  
crossing line of No 377 792 vs East of its SE  
corner at 1900 vs post mound & 4 pits mound F an East  
side 7 an west side and 7 an North side being 5 miles

Thence South at 336 vs South line  
of said No 677 vs 1200 vs from its SE Cor. at 873  
crossed N line of No 1 D S & Hooper & Wade  
666 vs East of its N E Cor at 1000 vs stone  
mound on high rocky hill at 1700 vs branch  
on mesa between hills at 1858 vs chasing on  
line of said No 1 1871 2/3 vs S 45 E of its Cor  
at 1900 vs being 6 miles a rock mound 3 ft high  
by 3 ft base mixed with dirt a most creek  
about 500 vs mound

Thence South at 260 vs on top of  
a high rocky hill or point where branch <sup>turns</sup>  
around to East 500 vs mesquite timber 530

1  
2  
3  
4  
5  
6  
7  
8  
9  
10  
11  
12  
13  
14  
15  
16  
17  
18  
19  
20  
21  
22  
23  
24  
25  
26  
27  
28  
29  
30  
31  
32

Wes tree on line 600 vs edge of a rock hill 800  
vs top of a high rock hill 1350 vs prairie between  
two high hills 1370 vs branch Causeway E 1410 edge  
of a hill 1600 vs on top of a high rocky peak  
crossing a line of No 371 G.W.P. 232 vs  
from its NW cor at 1731 vs wire fence at 1750  
vs branch at 1910 vs being 7 miles past cut  
F4 74 VIII \*

Thence South at 140 vs pile of stone  
on point of a brushy hill at 1600 vs S  
line of said No 371 66 vs fr on cor at  
1940 vs being 8 miles past & dirt end on the  
East point of a brushy hill and NW side of prairie

Thence South at 453 N line of  
No 151 1142 vs from on cor at 1600 vs S line  
of No 162 vs 100 vs from S E cor at 1900 vs  
being 9 miles a large rock end on a black  
Chaparral hill NW S 20 E cut 1X and 3  
of the small black brush in which and is  
drawn up have 9 straight marks cut.

Thence South at 806 vs prairie  
road at 1900 vs being 10 miles past F4 74 X

Thence South at 990 vs Pearlall  
& Batesville road at 1124 vs S line of  
Old Callahan 2290 vs from S E cor  
1338 vs S line of No 31 G.W.P. as cor  
188 from S E cor same being a cor  
of a stream and 185 from orig cor  
of No 31 G.W.P. 1440 vs N bank of  
Lyaledago 1463 vs S bank at 1900 vs  
being 11 miles past.

Thence South at 485 vs past in

Wired June 410 vs 464 775 W from N W cor  
of J. M. Mantala at 1900 vs being 14 miles  
East of Stau & earth on high rocky hills

Thence South at 161 vs intersected  
East line of Glas Cortez 656 vs S 15 W  
of its N E Cor 8984 vs N 15 E of its S E Cor  
1544 S 15 W from N W cor of J. M. Mantala  
8868 vs from SW cor of said Mantala at  
1900 vs being 13 miles around side of  
Stau in a black brush hill.

Thence South at 1900 vs being  
14 miles past in the edge of a patch mesquite  
flat

Thence South at 861 vs Little  
Yaludgo at 1900 vs being 15 miles an  
East and rock mound on black brush ridge

Thence South at 1900 vs being  
16 miles <sup>a foot</sup> by 4 ft high in a cut 4 ft

Thence South at 1196 vs a cut  
18' cut on east side & on west side  
blazed on North and South side sides at  
1313 vs stake on bank of river at a bend at 1403  
W bank of Leona at 1430 vs stake in bank  
where we crossed several trees are cut  
with initial letters of County at 1466 <sup>3/4</sup> vs  
we have connected to S E Cor of  
Walter Cassillas No 285 and from this  
point found Cortez S 75 E 164 vs N 15 E  
400 vs at 1900 vs being 17 miles past by  
4 ft high in a cut 4 ft

Thence South at 193 <sup>3/5</sup> vs  
crossing East line of said <sup>Cassillas</sup> Mantala survey

1006 vs S 15 W of of its N E Cor 8897 vs  
N 15 E of its S W Cor of <sup>R. Urquias</sup> at 1620 vs Trajan  
road at 1900 vs being 18 miles past 6' by  
4 1/4 ft high in a masoned & 4 pits,

Thence South at 1900 vs being  
19 miles past & end & 4 pits

Thence South at 1900 vs  
being 20 miles past & 4 pits, 650 vs or arch

Thence at 1900 vs being 21 miles  
past & end & 4 pits

Thence South at 274 vs  
N 1/2 of Tado Santos at 374 vs main creek  
at 1616 vs wire fence, at 1802 vs line  
of said ~~Survey~~ R. Urquias 2384 vs from  
said SW Cor at 1900 vs. a mes post  
& wire & 4 pits being 22 miles

Thence South at 294 vs a  
wire fence on west line of sur No. 12  
State at 525 vs S 15 W. of its N W  
Corner, at 1668 3/5 vs wire fence on  
south line of said No 12, 354 vs  
from its SW Cor, 400 vs N 75 W. from  
the Cor. of sur No 7 of R. L. Down  
at 1900 vs being 23 <sup>miles</sup> a 4 pr'y mes for  
post. 15 in. by

Thence South at 158 vs  
crossing a line of said R. L. Down sur  
386 vs. west of winterout Cor. at 1642  
vs. W line of survey No 30 S & N. Block No  
13. 664 vs. N 89 W. from its W. E. Cor.  
at 1900 vs. being 24 miles a mes.  
Post. 10 in by 4 feet high and earth

Zavalla Co. Bd. 9. 1854

measured.

Thence South at 1551 vs  
a road set a post on North side at  
1653 vs. Vibolt's Creek. at 1654 vs. N line  
of Sur No 29 623 vs N 89 W of its  
N.E. Cor. at 1900 vs. being 25 miles  
a mes. post 9 in by 4 feet high

Thence South at 1654  
vs N line of Sur No 28. 582 vs. N 89  
W. of its N.E. Cor. at 1900 vs being  
26 miles a mes post 6 in by 4 feet  
high

Thence South at 1642 vs.  
N line of Sur No 27. 541 vs. N 89 W.  
of its N.E. Cor. at 1900 vs. being 27  
miles a mes post 7 in by 4 feet high  
and 4 pits

Thence South at 1642 vs  
N line of Sur No 24 500 vs. N 89 W. of its  
N.E. Cor. at 1900 vs. being 28 miles a  
mes post 7 in by 4 feet high

Thence South  
at 1642 vs. N line of Sur No 25. 459 vs  
N 89 W. of its N.E. Cor. at 1650 vs a wagon  
road at 1753 vs Beech water  
at 1900 vs. a mes post 9 in by 6 in  
by 4 1/2 feet high being 29 miles

Thence South  
at 1148 vs a fence at 1352 vs. against  
the S.E. cor. of Zavalla County at 1642  
vs. N line of Sur No 24 468 vs. N 89 W  
of its N.E. Cor. at 1900 vs. being 30 miles  
a mes. post 15 in di 6 feet high set

in the ground 3 feet deep an  
earth mound thrown up all around  
and Bear mound. a ms 10 brs  $26\frac{1}{2}$  &  
 $8\frac{3}{5}$  vs mark F ms 8 brs  $13\frac{1}{2}$  vs  $13\frac{3}{5}$   
vs mark B a 6 fr. g ms. 10 brs  $7\frac{1}{4}$  &  
 $7\frac{5}{8}$  vs mark L a 3 fr. g ms. 15 in di  
brs. W 3000. 3.8 vs mark G.

The posts all have the initials letters of  
the Counties & the number of miles they  
represent, are cut on the side of Post  
Pagan Nov 21<sup>st</sup> 1887  
finished Nov 26 1887 Geo Myers  
Surveyor appointed by Zavalla Co

East Co Line

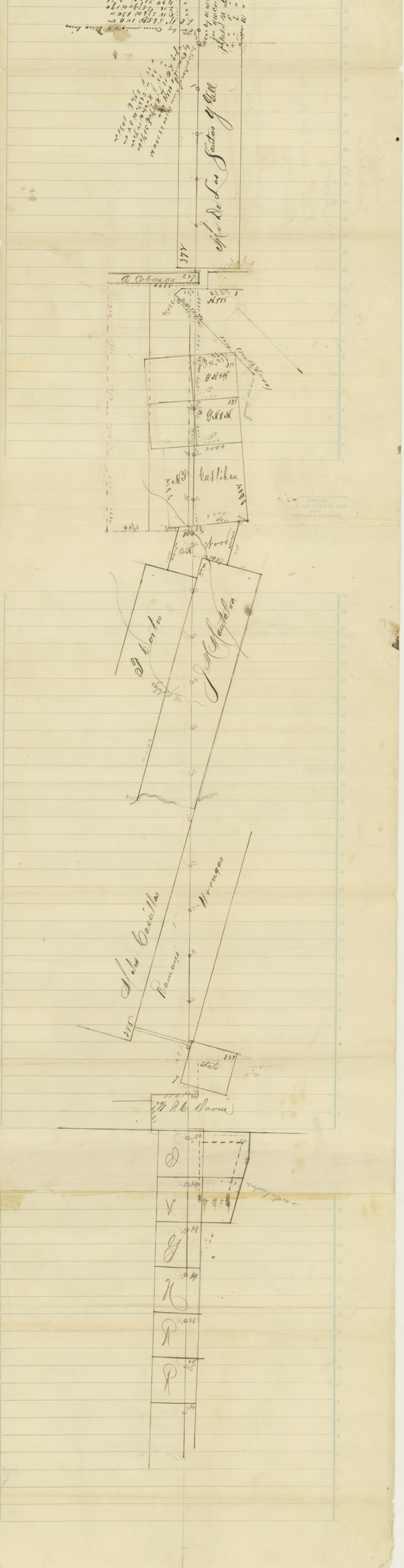
Zavalla Co Bary Line 2a

The State of Texas } J. B. Ross Clerk  
County of Zavalla } of the County Court  
in and for the County of Zavalla and State of  
Texas. do hereby certify that the foregoing is  
a true copy of the Field Notes and map of the  
Eastern boundary line of Zavalla County Texas  
as surveyed by Geo Myers appointed by  
Zavalla County and J. W. Crouch appointed  
by Tarrant County and Reported by Geo Myers to  
the Commissioners Court of said Zavalla County  
and Recorded in the minutes thereof

Given under my hand and Seal  
office this 10<sup>th</sup> day of January 1888

J. B. Ross Clerk C. C.  
Zavalla Co. Tex





Zavalla Co. Bdy Line 2a \$ 5 2

County Bdy between  
Zavalla

D. Rio

Filed in Genl. Ld Office  
July 21st/88

Abstract Completed and  
Copy furnished the Comptroller.

Filed 4<sup>th</sup> /88 Beaumont

LEADERS ABSTRACT  
GEO. D. DANFORTH & CO.  
ST. LOUIS.