

DESCRIPTION OF 1093.65 ACRES

1093.65 acres in the M. M. Battle League, A-9, and the A. Hodge League, A-32, in Fort Bend County, Texas and being a portion of land out of the Texas Department of Corrections (T.D.C.) land as described in the Reclamation Department Bulletin Number 26; the said 1093.65 acre tract being more particularly described as follows:

BEGINNING at a 1" galvanized iron pipe on the west line of the said Battle League from which a concrete monument for the "Thirty First Corner" as described on page 9 of said Bulletin No. 26, bears N 3° 12' 40" W 443.35 feet;

THENCE with said west line S 3° 12' 40" E, at 890.00 feet pass a set 1" galvanized iron pipe, 1491.48 feet in all to a point on the Brazos River for the southwest corner of this tract;

THENCE with the meanders of the Brazos River the following eighteen (18) courses:

- 1) S 73° 33' 55" E 591.61 feet
- 2) S 77° 33' 41" E 185.05 feet
- 3) S 84° 02' 43" E 253.37 feet
- 4) S 80° 09' 08" E 194.40 feet
- 5) S 87° 37' 14" E 1027.10 feet
- 6) S 72° 56' 40" E 644.10 feet
- 7) S 72° 31' 00" E 1022.35 feet
- 8) S 73° 27' 02" E 1406.89 feet
- 9) S 48° 17' 10" E 484.71 feet
- 10) S 30° 57' 33" E 596.76 feet
- 11) S 18° 33' 28" E 344.30 feet
- 12) S 00° 51' 15" E 512.30 feet
- 13) S 18° 13' 50" W 584.48 feet
- 14) S 07° 16' 35" W 233.12 feet
- 15) S 00° 05' 03" W 613.21 feet
- 16) S 14° 59' 58" E 87.99 feet
- 17) S 43° 47' 27" E 605.46 feet
- 18) S 81° 35' 14" E 1098.99 feet to a point for the southeast corner of this tract;

THENCE N 1° 51' 06" W, at 430.56 feet pass a found 3/8" iron rod, and at 3629.18 feet pass a set 1/2" iron rod on the floodway line as digitized from F.E.M.A. Floodway Map Panel Numbers 480228-0235 and 480228-0245 dated August 5, 1986, 4910.81 feet in all to a found 3/8" iron rod for a corner of this tract and the northwest corner of a 33.85 acre tract as recorded in Vol. 584, page 636, Deed Records of Fort Bend County;

THENCE with the north line of said 33.85 acre tract N 86° 02' 14" E 301.03 feet to a found 1 1/2" aluminum cap marked "EHA 310" for its northeast corner and a corner of this tract, on the east line of said Hodge League;

THENCE with the said Hodge line N 1° 55' 19" W 4421.76 feet to a set 1" galvanized iron pipe for a corner of this tract;

THENCE S 87° 08' 28" W 619.44 feet crossing a drainage ditch to a found 3/4" iron rod for a corner of this tract;

THENCE N 1° 50' 42" W 3087.21 feet to a 1" galvanized iron pipe on the east line of the T.D.C. land and on the southeast line of a 1.844 acre tract of additional highway right-of-way for Highway No. 59 for the northeast corner of this tract;

THENCE with a line of said 1.844 acre tract S 52° 31' 25" W 688.07 feet to a found 1" galvanized iron pipe for a corner of this tract;

THENCE continuing with another line of said 1.844 acre tract S 49° 11' 27" W 193.11 feet to a found 1" galvanized iron pipe for a corner of this tract;

THENCE continuing with another line of said 1.844 acre tract S 52° 31' 25" W 1285.30 feet to a found 1" galvanized iron pipe on the southeast right-of-way of Highway No. 59, which point is on a curve to the left, for a corner of this tract;

THENCE with said southeast right-of-way curve to the left having the following data: Radial Bearing In - S 36° 02' 45" E, Radial Bearing Out - S 88° 11' 31" W, Delta - 37° 45' 43" E, Radius - 877.19 feet, Tangent - 300.00 feet, Long Chord - S 15° 04' 23" W 367.73 feet, and an Arc Length of 578.13 feet to a found concrete monument for the Point of Tangent and a corner of this tract;

THENCE continuing with said right-of-way S 3° 30' 00" E 10.00 feet to a found concrete monument for the Point of Curve of a curve to the right for a corner of this tract;

THENCE continuing with said right-of-way and curve to the right having the following data: Radial Bearing In - S 86° 13' 58" W, Radial Bearing Out - S 3° 59' 28" E, Delta - 89° 53' 35" E, Radius - 423.00 feet, Tangent - 422.46 feet, Long Chord - S 41° 11' 44" W 587.83 feet, and an Arc Length of 563.90 feet to a found concrete monument at the Point of Tangent for a corner of this tract;

THENCE continuing with said right-of-way S 86° 05' 08" W 31.64 feet to a found 1" galvanized iron pipe for a corner of this tract;

THENCE continuing with said right-of-way S 40° 50' 00" W 35.20 feet to a found 1" galvanized iron pipe for a corner of this tract;

THENCE continuing with said right-of-way S 86° 05' 08" W 150.00 feet to a found 1" galvanized iron pipe for a northeast corner of an 8.000 acre tract, conveyed by T.D.C. to Texas Department of Highways and Public Transportation, and a corner of this tract;

THENCE with the east line of said tract S 4° 10' 00" E 846.11 feet to a found 1" galvanized iron pipe for its southeast corner and a corner of this tract;

THENCE with the south line of said tract S 85° 50' 00" W 400.00 feet to a found 1" galvanized iron pipe for its southwest corner and a corner of this tract;

THENCE with the west line of said tract N 4° 10' 00" W 872.87 feet to a found 1" galvanized iron pipe on the southeast right-of-way of Highway No. 59 for its northwest corner and a corner of this tract;

THENCE with said right-of-way S 76° 03' 27" W 339.22 feet to a found 1" galvanized iron pipe for the most easterly corner of a 5.138 acre tract, of additional highway right-of-way for Highway No. 59, and a corner of this tract;

THENCE with a line of said tract S 52° 29' 44" W 853.83 feet to a found 1" galvanized iron pipe for a corner of this tract;

THENCE with another line of said tract S 57° 03' 53" W 199.96 feet to a found 1" galvanized iron pipe for a corner of this tract;

THENCE with another line of said tract S 52° 30' 45" W 1921.19 feet to a found 1" galvanized iron pipe for a corner of this tract;

THENCE with another line of said tract S 52° 31' 25" W 676.73 feet to the PLACE OF BEGINNING.

Containing 1093.65 acres, more or less, of which 435.47 acres lie in the floodway as digitized from F.E.M.A. Floodway Map Panel Numbers 480228-0235 and 480228-0245 dated August 15, 1986.

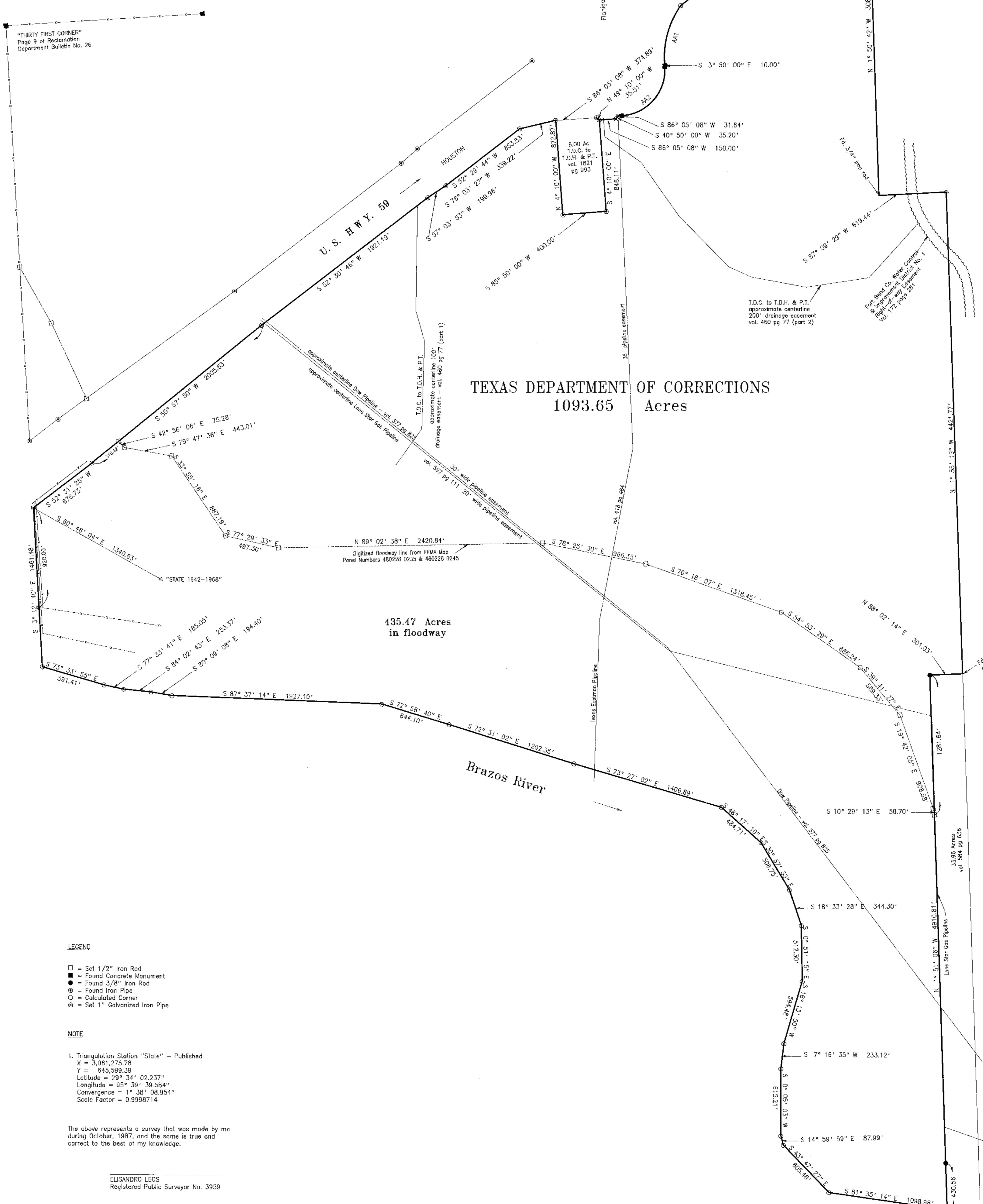
Bearings herein are grid based on the Texas Coordinate System - South Central Zone. Distances herein are horizontal surface measurements.

The above description was prepared from a survey that was made on the ground by me during October 1987, and is depicted on Plot of Survey dated October 30, 1987, and accompanying this, which reference is made hereto and a part hereof. From the beginning corner of this tract Triangulation Station "STATE 1942 - 1868" bears S 60° 46' 04" E 1340.83 feet. The published coordinates of "STATE" are X = 3,061,275.78 Feet, Y = 645,389.39 feet.

ELISANDRO LEOS  
REGISTERED PUBLIC SURVEYOR NO. 3959

CURVE TABLE

NAME	ANGLE	RADIUS	LENGTH	BEARING	CHORD
AA1	37° 45' 43.8"	877.10'	578.13'	S 13° 04' 23" W	567.73'
AA2	89° 53' 35.5"	423.00'	663.90'	S 41° 11' 44" W	587.83'



TEXAS DEPARTMENT OF CORRECTIONS  
1093.65 Acres

435.47 Acres  
in floodway

LEGEND

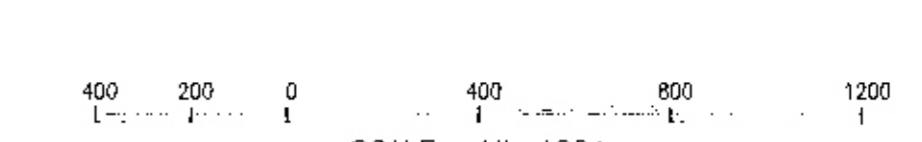
- = Set 1/2" Iron Rod
- = Found Concrete Monument
- = Found 3/8" Iron Rod
- ⊙ = Found Iron Pipe
- = Calculated Corner
- ⊙ = Set 1" Galvanized Iron Pipe

NOTE

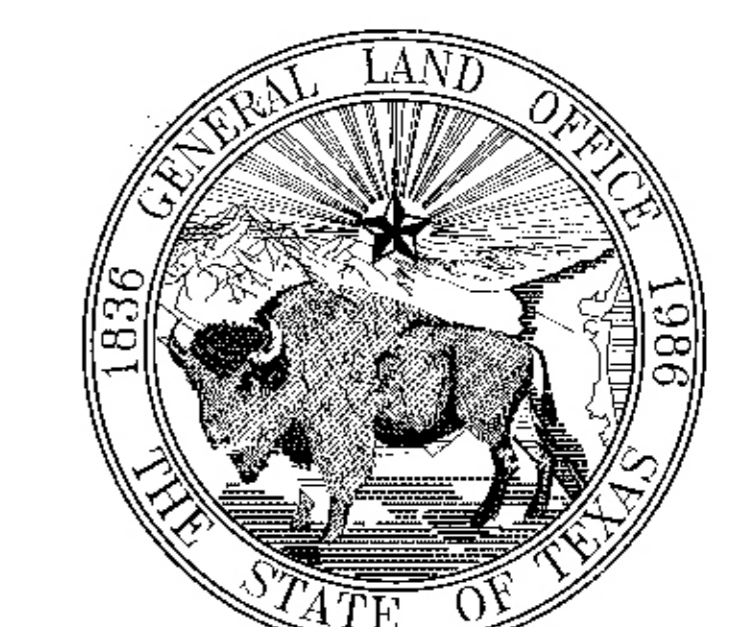
1. Triangulation Station "State" - Published  
X = 3,061,275.78  
Y = 645,389.39  
Latitude = 29° 34' 02.237"  
Longitude = 95° 39' 39.584"  
Convergence = +4' 38" 08.954"  
Scale Factor = 0.9998714

The above represents a survey that was made by me during October, 1987, and the same is true and correct to the best of my knowledge.

ELISANDRO LEOS  
Registered Public Surveyor No. 3959



Bearings are Grid based on the Texas Coordinate System, South Central Zone.  
Distances are Horizontal Surface Measurements in Feet.



Garry Mauro, Commissioner  
PLAT OF SURVEY  
of  
**1093.65 ACRES**  
out of the  
TEXAS DEPARTMENT OF CORRECTIONS LANDS  
in the  
M.M. BATTLE LEAGUE A-9  
and  
A. HODGE LEAGUE A-32  
in  
FORT BEND COUNTY, TEXAS

Surveyed October 1987  
Surveyed for Texas Department of Corrections  
date: October 30, 1987  
Drawn by: Rickie Charles Sany

TEXAS GENERAL LAND OFFICE  
State Real Property  
Agency: TDCU  
Sketch No.: L-13



DESCRIPTION OF 1093.65 ACRES

1093.65 acres in the M. M. Battle League, A-9, and the A. Hodge League, A-32, in Fort Bend County, Texas and being a portion of land out of the Texas Department of Corrections (T.D.C.) land as described in the Reclamation Department Bulletin Number 26; the said 1093.65 acre tract being more particularly described as follows:

BEGINNING at a 1" galvanized iron pipe on the west line of the said Battle League from which a concrete monument for the "Thirty First Corner" as described on page 9 of said Bulletin No. 26, bears N 3° 12' 40" W 4435.95 feet;

THENCE with said west line S 3° 12' 40" E, of 920.00 feet pass a set 1" galvanized iron pipe, 1461.48 feet in all to a point on the Brazos River for the southwest corner of this tract;

THENCE with the meanders of the Brazos River the following eighteen (18) courses:

- 1) S 73° 33' 55" E 591.41 feet
- 2) S 77° 33' 41" E 185.05 feet
- 3) S 84° 02' 43" E 253.37 feet
- 4) S 80° 09' 08" E 194.40 feet
- 5) S 87° 37' 14" E 1927.10 feet
- 6) S 72° 58' 40" E 644.10 feet
- 7) S 72° 31' 02" E 1222.35 feet
- 8) S 73° 27' 02" E 1406.89 feet
- 9) S 48° 17' 10" E 484.71 feet
- 10) S 30° 57' 33" E 506.75 feet
- 11) S 18° 33' 28" E 344.30 feet
- 12) S 00° 51' 13" E 312.30 feet
- 13) S 18° 13' 50" W 394.48 feet
- 14) S 07° 16' 33" W 233.12 feet
- 15) S 00° 05' 03" W 615.21 feet
- 16) S 14° 59' 39" E 87.99 feet
- 17) S 43° 47' 27" E 626.46 feet
- 18) S 81° 35' 14" E 1098.98 feet to a point for the south-east corner of this tract;

THENCE N 1° 51' 08" W, of 430.56 feet pass a found 3/8" iron rod, and at 3629.18 feet pass a set 1/2" iron rod on the floodway line as digitized from F.E.M.A. Floodway Map Panel Numbers 480228-0235 and 480228-0245 dated August 5, 1986, 4910.81 feet in all to a found 3/8" iron rod for a corner of this tract and the northeast corner of a 33.96 acre tract as recorded in Vol. 584, page 636, Deed Records of Fort Bend County;

THENCE with the north line of said 33.96 acre tract N 88° 02' 14" E 301.03 feet to a found 1/2" aluminum cap marked "294 310" for its northeast corner and a corner of this tract, on the east line of said Hodge League;

THENCE with the said Hodge line N 1° 55' 19" W 4421.76 feet to a set 1" galvanized iron pipe for a corner of this tract;

THENCE S 87° 09' 29" W 619.44 feet crossing a drainage ditch to a found 3/4" iron rod for a corner of this tract;

THENCE N 1° 50' 42" W 3087.21 feet to a 1" galvanized iron pipe on the east line of the T.D.C. land and on the southeast line of a 1.944 acre tract of additional highway right-of-way for Highway No. 59 for the northeast corner of this tract;

THENCE with a line of said 1.944 acre tract S 52° 31' 25" W 688.07 feet to a found 1" galvanized iron pipe for a corner of this tract;

THENCE continuing with another line of said 1.944 acre tract S 48° 11' 27" W 199.31 feet to a found 1" galvanized iron pipe for a corner of this tract;

THENCE continuing with another line of said 1.944 acre tract S 52° 31' 25" W 1289.90 feet to a found 1" galvanized iron pipe on the southeast right-of-way of Highway No. 59, which point is on a curve to the left, for a corner of this tract;

THENCE with said southeast right-of-way curve to the left having the following data, Radial Bearing in - S 86° 11' 31" E, Delta - 37° 45' 43.8", Radius - 877.19 feet, Tangent - 302.00 feet, Long Chord - S 15° 04' 23" W 587.73 feet, and an Arc Length of 378.13 feet to a found concrete monument for the Point of Tangent and a corner of this tract;

THENCE continuing with said right-of-way S 3° 50' 00" E 10.00 feet to a found concrete monument for the Point of Curve of a curve to the right for a corner of this tract;

THENCE continuing with said right-of-way and curve to the right having the following data, Radial Bearing in - S 86° 13' 36" W, Radial Bearing Out - S 3° 50' 28" E, Delta - 89° 50' 35.5", Radius 423.00 feet, Tangent - 422.46 feet, Long Chord - S 41° 11' 44" W 597.83 feet, and an Arc Length of 663.90 feet to a found concrete monument at the Point of Tangent for a corner of this tract;

THENCE continuing with said right-of-way S 86° 05' 08" W 31.64 feet to a found 1" galvanized iron pipe for a corner of this tract;

THENCE continuing with said right-of-way S 40° 50' 00" W 35.20 feet to a found 1" galvanized iron pipe for a corner of this tract;

THENCE continuing with said right-of-way S 86° 05' 08" W 150.00 feet to a found 1" galvanized iron pipe for a northeast corner of an 8.000 acre tract, conveyed by T.D.C. to Texas Department of Highways and Public Transportation, and a corner of this tract;

THENCE with the east line of said tract S 4° 10' 00" E 846.11 feet to a found 1" galvanized iron pipe for its southeast corner and a corner of this tract;

THENCE with the south line of said tract S 85° 50' 00" W 402.00 feet to a found 1" galvanized iron pipe for its southwest corner and a corner of this tract;

THENCE with the west line of said tract N 4° 10' 00" W 872.87 feet to a found 1" galvanized iron pipe on the southeast right-of-way of Highway No. 59 for its northeast corner and a corner of this tract;

THENCE with said right-of-way S 78° 03' 27" W 339.22 feet to a found 1" galvanized iron pipe for the most easterly corner of a 3.138 acre tract, of additional highway right-of-way for Highway No. 59, and a corner of this tract;

THENCE with a line of said tract S 52° 29' 44" W 853.83 feet to a found 1" galvanized iron pipe for a corner of this tract;

THENCE with another line of said tract S 57° 03' 53" W 199.96 feet to a found 1" galvanized iron pipe for a corner of this tract;

THENCE with another line of said tract S 52° 30' 46" W 1921.19 feet to a found 1" galvanized iron pipe for a corner of this tract;

THENCE with another line of said tract S 50° 57' 50" W, of 1689.21 feet pass a set 1/2" iron rod on the floodway line, 2005.63 feet in all to a found 1" galvanized iron pipe for a corner of this tract;

THENCE with another line of said tract S 50° 31' 25" W 676.73 feet to the PLACE OF BEGINNING.

Containing 1093.65 acres, more or less, of which 435.47 acres lie in the floodway as digitized from F.E.M.A. Floodway Map Panel Numbers 480228-0235 and 480228-0245 dated August 15, 1986.

Bearings herein are grid based on the Texas Coordinate System-South Central Zone. Distances herein are horizontal surface measurements.

The above description was prepared from a survey that was made on the ground by me during October 1987, and is depicted on Plat of Survey dated October 30, 1987, and accompanying this, which reference is made hereto and a part hereof. From the beginning corner of this tract Triangulation Station "STATE 1942 - 1968" bears S 60° 46' 04" E 1340.63 feet. The published coordinates of "STATE" are X = 3,061,275.78 feet, Y = 645,599.39 feet.

ELISANDRO LEOS  
REGISTERED PUBLIC SURVEYOR NO. 3959

- LEGEND
- = Set 1/2" Iron Rod
  - = Found Concrete Monument
  - = Found 3/8" Iron Rod
  - = Found Iron Pipe
  - = Calculated Corner
  - = Set 1" Galvanized Iron Pipe

NOTES

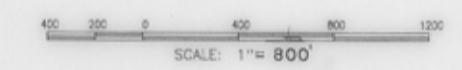
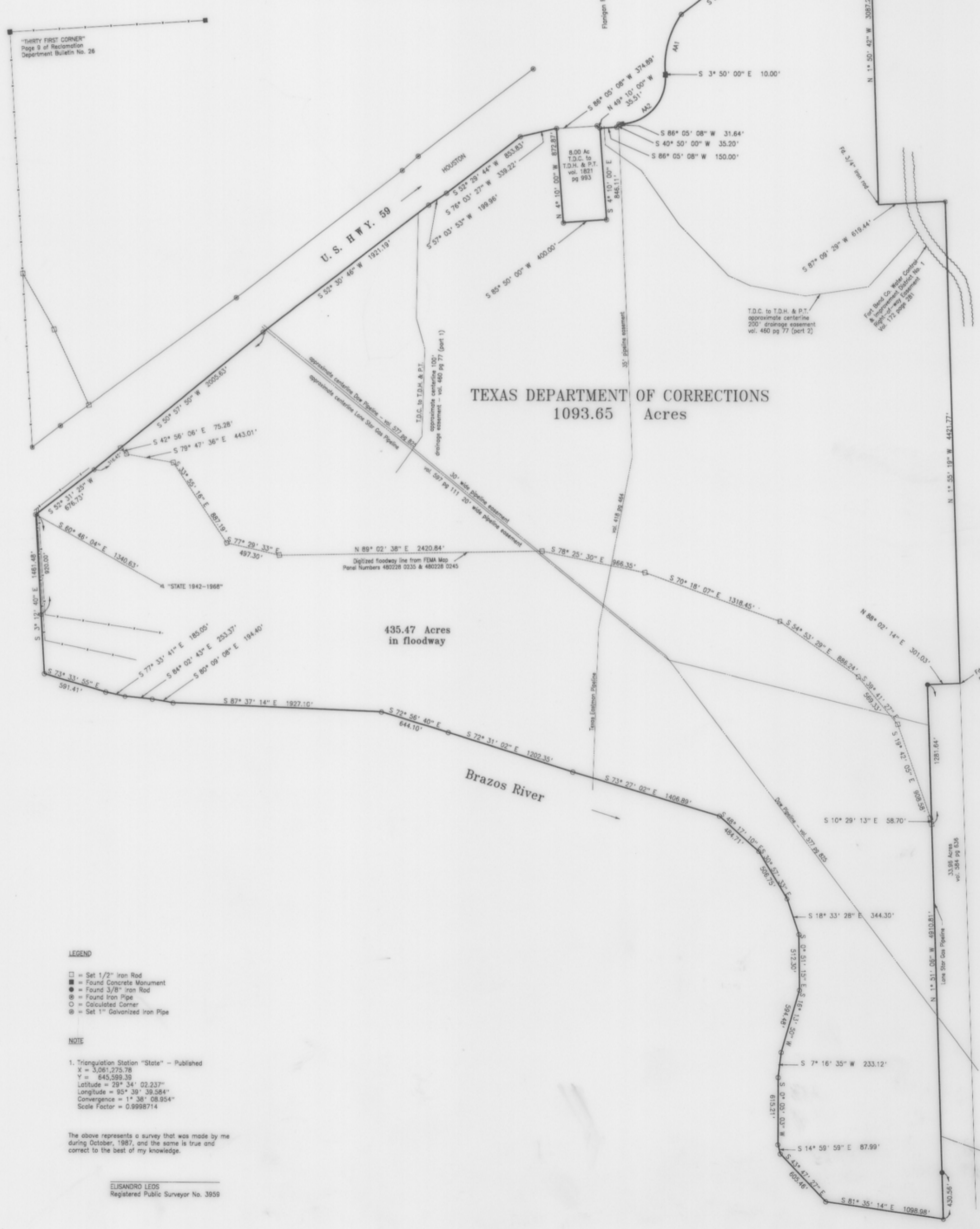
1. Triangulation Station "State" - Published  
X = 3,061,275.78  
Y = 645,599.39  
Latitude = 29° 54' 02.23"  
Longitude = 95° 39' 39.08"  
Convergence = 1° 38' 08.954"  
Scale Factor = 0.9998714

The above represents a survey that was made by me during October, 1987, and the same is true and correct to the best of my knowledge.

ELISANDRO LEOS  
Registered Public Surveyor No. 3959

CURVE TABLE

NAME	ANGLE	RADIUS	LENGTH	BEARING	CHORD
AA1	37° 45' 43.8"	877.19'	578.13'	S 15° 04' 23" W	587.73'
AA2	89° 55' 35.5"	423.00'	663.90'	S 41° 11' 44" W	597.83'



Bearings are Grid based on the Texas Coordinate System, South Central Zone.  
Distances are Horizontal Surface Measurements in Feet.



Garry Mauro, Commissioner  
PLAT OF SURVEY  
1093.65 ACRES  
out of the  
TEXAS DEPARTMENT OF CORRECTIONS LANDS  
in the  
M.M. BATTLE LEAGUE A-9  
and  
A. HODGE LEAGUE A-32  
in  
FORT BEND COUNTY, TEXAS  
Surveyed October 1987  
Surveyed for Texas Department of Corrections  
date: October 30, 1987  
drawn by: Rickie Charles Sany

TEXAS GENERAL LAND OFFICE  
State Real Property Sketch  
Agency TDCJ  
Sketch No. S-13