

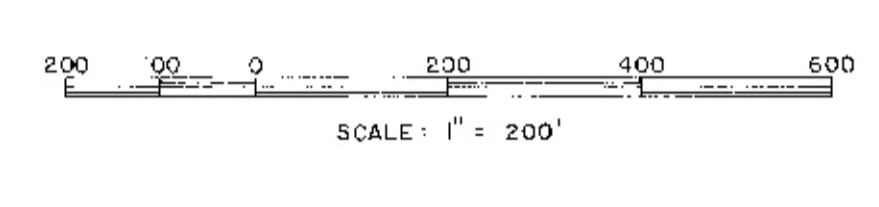
TEXAS DEPARTMENT OF CORRECTIONS  
 TO  
 ALVIN S. MOODY AND W. K. KING  
 Patented April 12, 1965  
 Vol. 34-B No. 264  
 66.53 Ac. (66.54 Ac.)

TEXAS DEPARTMENT OF CORRECTIONS  
 TO  
 ALVIN S. MOODY AND W. K. KING  
 Patented April 12, 1965  
 Vol. 34-B No. 264  
 168.70 Ac. (169.00 Ac.)

TEXAS DEPARTMENT OF CORRECTIONS  
 TO  
 ALVIN S. MOODY AND W. K. KING  
 Patented April 12, 1965  
 Vol. 34-B No. 264  
 117.16 Ac. (117.17 Ac.)

TEXAS DEPARTMENT OF CORRECTIONS - BLUE RIDGE FARM  
**296.690 Acres**

JOHN STAMPS SURVEY  
 A-736



**METES AND BOUNDS DESCRIPTION**

A 296.690 acre tract or parcel of land situated in the C.W. Adams Survey Abstract 101 in Harris County, being the remainder of that tract conveyed by Bossert Blakely to Texas Department of Corrections in Vol. 495 page 211 Harris County Deed Records, and further described as follows:

Beginning at a chisel mark in the centerline of Blue Ridge Road concrete bridge and Sims Bayou for the common corner of tracts 1, 2, and 3, Patent Volume 34-B, Patent Number 264, for the northwest corner of this tract;

THENCE, with the centerline of Sims Bayou and south line of said tract number 2, N 89°36'56" E 3769.93 feet to a point in the east line of said C. W. Adams Survey for the southeast corner of tract number 2 and northeast corner of this tract;

THENCE with the east line of said Adams Survey S 1°14'04" E 3410.91 feet, at 75.00 feet pass a set 1" galvanized iron pipe, to an old 1" iron pipe found for the southeast corner of said Adams Survey and this tract;

THENCE with the south line of said Adams Survey and generally with fence S 89°14'43" W 3781.54 feet, at 3759.40 feet pass a set 1" galvanized iron pipe, to a point in approximate centerline of Blue Ridge Road for the southeast corner of said tract number 3 and the southwest corner of this tract;

THENCE with the said Blue Ridge Road and east line of said tract number 3, N 1°02'10" W 3435.20 feet to the Place of Beginning.

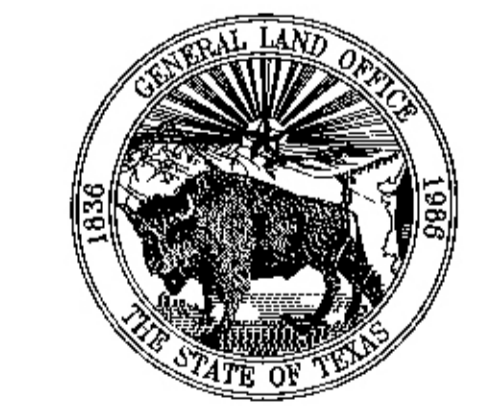
This tract contains 296.690 acres more or less.

Bearings herein are based on the True Meridian as determined by Solar Observation of survey traverse point number 1 being U.S.C. & G.S. Triangulation Station "BUTLER". Distances are horizontal surface measurements. The above description was prepared from a survey made on the ground by me during the months of July and August, 1985 and is depicted on Plat of Survey dated September 9, 1985, accompanying this, which reference is made hereto and a part hereof. From the beginning corner Tri-Station BUTLER, bears N 23°05'14" E 4295.26 feet. No published data found on BUTLER.

T. T. R. R. CO. SURVEY  
 A-1005

A. B. REEVES SURVEY  
 A-674

Registered Public Surveyor No. 3959



Garry Mauro, Commissioner  
 of  
 PLAT OF SURVEY  
 of  
**296.690 ACRES**  
 out of the  
**C. W. ADAMS SURVEY**  
 in  
**HARRIS COUNTY, TEXAS**

- LEGEND**
- Found Concrete Monument
  - Found 5/8" Iron Rod
  - ⊙ Found Iron Pipe
  - Colored Glass Corner
  - ⊕ Set 1" galvanized Iron Pipe
  - ⊕ Found Chisel Mark in Center of Concrete Bridge
  - ⊙ Wharfed

**NOTE**

Bearings are true based on the True Meridian as determined by Solar Observation of survey traverse point number 1 being U.S.C. & G.S. Triangulation Station "BUTLER" (as published and found).

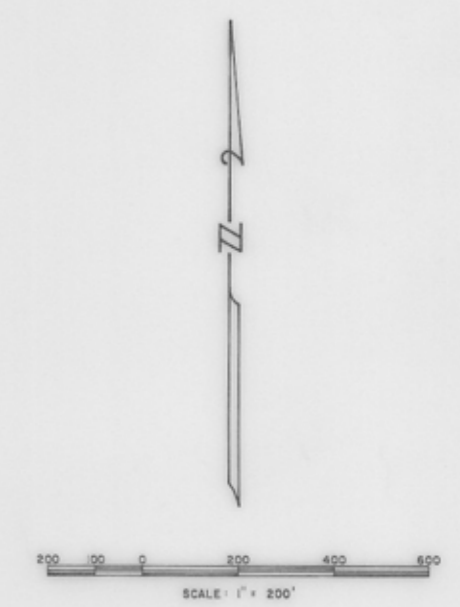
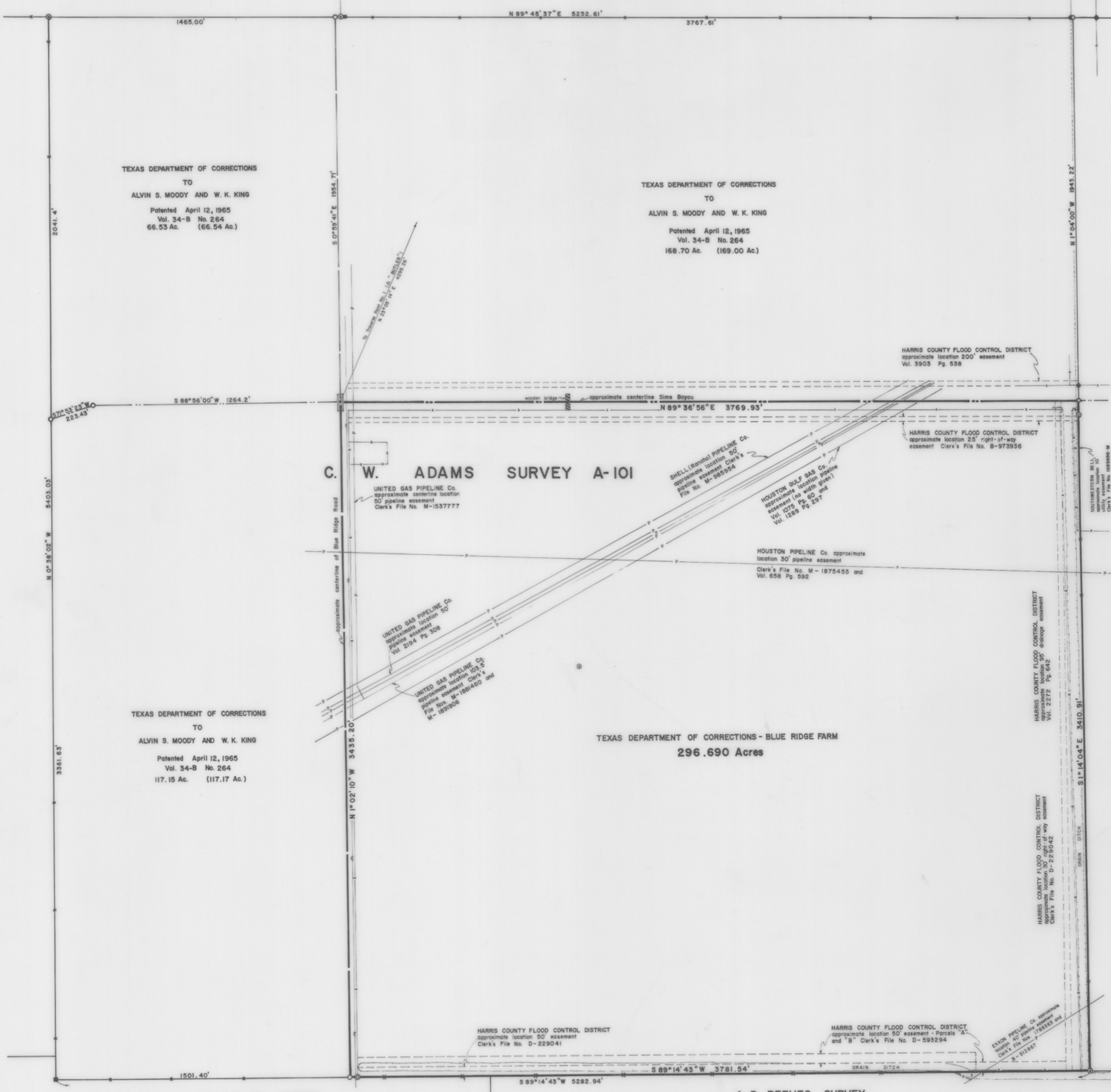
Distances are Horizontal Surface Measurements in Feet.

The above represents a survey made on the ground, by me, and the same is true and correct to the best of my knowledge.

Surveyed: July and August, 1985  
 Surveyed For: The Texas Department of Corrections  
 Date: September 9, 1985  
 Revised: October 17, 1985

Registered Public Surveyor No. 3959





**JOHN STAMPS SURVEY**  
A-736

**METERS AND BOUNDS DESCRIPTION**

A 296.690 acre tract or parcel of land situated in the C.W. Adams Survey Abstract 101 in Harris County, being the remainder of that tract conveyed by Bossert Blockley to Texas Department of Corrections in Vol. 499 page 211 Harris County Dead Records, and further described as follows:

Beginning at a chisel mark in the centerline of Blue Ridge Road concrete bridge and Sims Bayou for the common corner of tracts 1, 2, and 3, Patent Volume 34-B, Patent Number 264, for the northeast corner of this tract;

THENCE, with the centerline of Sims Bayou and south line of said tract number 2, N 89°36'56" E 3769.93 feet to a point in the east line of said C. W. Adams Survey for the southeast corner of tract number 2 and northeast corner of this tract;

THENCE, with the east line of said Adams Survey S 1°14'04" E 3410.91 feet, of 75.00 feet pass a set 1" galvanized iron pipe, to an old 1" iron pipe found for the southeast corner of said Adams Survey and this tract;

THENCE, with the south line of said Adams Survey and generally with fence S 89°14'43" W 3781.54 feet, at 3783.00 feet pass a set 1" galvanized iron pipe, to a point in approximate centerline of Blue Ridge Road for the southeast corner of said tract number 3 and the southwest corner of this tract;

THENCE, with the said Blue Ridge Road and east line of said tract number 3, N 1°02'10" W 3435.20 feet to the Place of Beginning.

This tract contains 296.690 acres more or less.

Bearings herein are based on the True Meridian as determined by Solar Observation at survey traverse point number 1 being U.S.C. & G.S. Triangulation Station "BUTLER". Distances are horizontal surface measurements. The above description was prepared from a survey made on the ground by me during the months of July and August, 1985 and is deposited on Plat of Survey dated September 9, 1985, accompanying this, which reference is made hereto and a part hereof. From the beginning corner Tri-Station BUTLER bears N 23°05'14" E 4295.26 feet. No published data found on BUTLER.

Registered Public Surveyor No. 3959



**Garry Mauro, Commissioner**  
PLAT OF SURVEY  
of  
**296.690 ACRES**  
out of the  
**C. W. ADAMS SURVEY**  
in  
**HARRIS COUNTY, TEXAS**

Surveyed: July and August, 1985  
Surveyed For: The Texas Department of Corrections  
Date: September 9, 1985

Revised: October 17, 1985

TEXAS GENERAL LAND OFFICE  
Cadastral Property Sketch  
TDCJ  
Sketch No. S-16

- LEGEND**
- Found Concrete Monument
  - Found 6x6" Iron Rod
  - Found Iron Pipe
  - Calculated Corner
  - ⊙ Set 1" Galvanized Iron Pipe
  - + Found Chisel Mark in Center of Concrete Bridge
  - ⊙ Wellhead

**NOTE**

Bearings are true based on the True Meridian as determined by Solar Observation of survey traverse point number 1 being U.S.C. & G.S. Triangulation Station "BUTLER" (see additional data found).

Distances are Horizontal Surface Measurements in Feet.

This shows represents a survey made on the ground, by me, and the same is true and correct to the best of my knowledge.

Registered Public Surveyor No. 5939