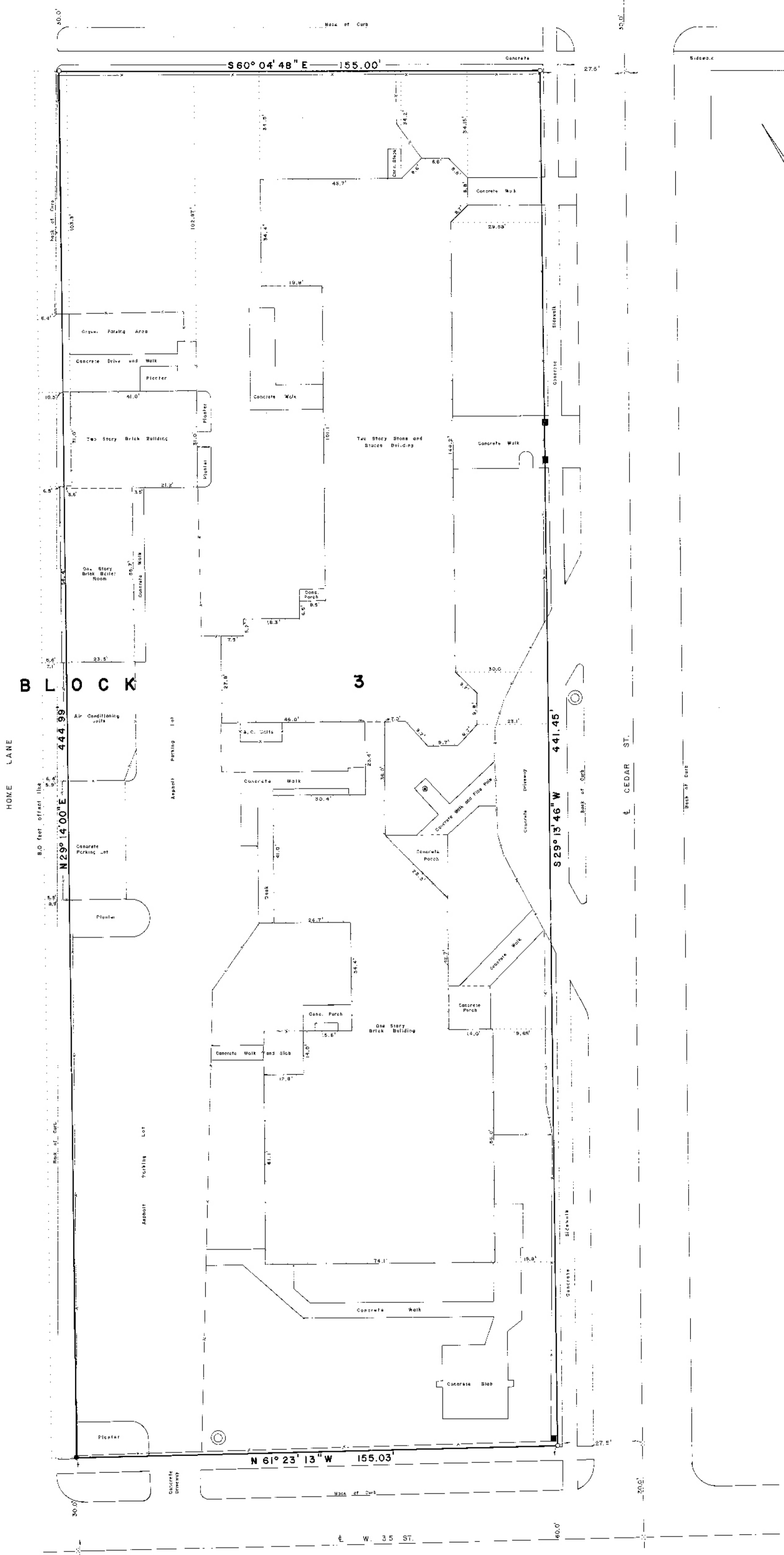


APPROVED FOR THE CITY OF AUSTIN
 SEPTEMBER 24, 1985
 TRAVIS COUNTY CLERK'S OFFICE

E. W. 38 ST.



LEGEND

- = 3/4" 1/2" Iron Rod
- = Found 1/2" Iron Rod
- = Found 1/4" Iron Rod
- = Chain Link Fence
- = 2'x2' Stone Pillar
- ⊥ = NoC
- = Marking

NOTE

Bearings are based on the True Meridian as determined by Solar Observation made at the surface corner.
 Distances are Horizontal Surface measurements in feet.
 According to Flood Insurance Note Map number 480324-0045B this property does not lie within a designated flood hazard area.

METES AND BOUNDS DESCRIPTION

All of lots 1, 3, 5, 7, 9, 11, 13 and 15 in Block 3 of Budington's Subdivision of Outlot Number 77 in Division D of the Austin City Outlots of record in Volume 1, Page 54 of the Travis County Plat Records, being the same land as conveyed by the Texas Division United Daughters of Confederacy to the State of Texas by deed recorded in Volumes 246, Pages 544 and 545 Travis County Deed Records and is further described as follows:

BEGINNING at a found 1/2" iron rod for the southwest corner of lot number one and this tract;
THENCE with the westerly line of said lots 1, 3, 5, 7, 9, 11, 13 and 15 N 28° 14' 00" E 444.99 feet to a set 1/2" iron rod for the northwest corner of lot 15 and this tract;
THENCE with the northerly line of lot 15 S 60° 04' 48" E 155.00 feet to a set 1/2" iron rod for its northeast corner and this tract;
THENCE with the easterly line of said lots 1, 3, 5, 7, 9, 11, 13 and 15 and generally with fence S 28° 13' 46" W 441.45 feet to a set 1/2" iron rod for the southeast corner of lot one and this tract;
THENCE with the southerly line of lot one N 61° 23' 13" W 155.03 feet to the Place of Beginning.

This tract contains 1.577 acres of land more or less.

Bearings are grid based on the True Meridian as determined by Solar Observation made at the northeast corner of this tract. Distances are horizontal surface measurements. The above description was prepared from a survey made on the ground by me on September 20, 1985 and is depicted on Plat of Survey dated September 24, 1985, accompanying this, which reference is made hereto and a part hereof.

Registered Public Surveyor No. 3959

Garry Mauro, Commissioner

PLAT OF SURVEY
 OF

LOTS 1,3,5,7,9,11,13 AND 15 IN BLOCK 3 OF BUDINGTON'S SUBDIVISION OF OUTLOT 77 IN DIVISION D OF THE AUSTIN CITY OUTLOTS, VOL.1, PG.54 TRAVIS COUNTY PLAT RECORDS.

City of Austin
 Travis County, Texas
 Surveyed: September 24, 1985
 Surveyed For: TEXAS SCHOOL FOR THE BLIND
 Scale: 1" = 20 Feet

The above represents a survey made on the ground by me and the same is true and correct to the best of my knowledge.

Eduardo Diaz
 Registered Public Surveyor No. 3959

[Handwritten signatures and stamps]

TEXAS GENERAL LAND OFFICE
 State Real Property Sketch
 Agency Texas School for the Blind
 Sketch No. L-17

TRAVIS COUNTY CLERK'S OFFICE