



GARRY MAURO, COMMISSIONER
GENERAL LAND OFFICE
AUSTIN, TEXAS

GLO/LM/SD
01/23/89
S. Segura

Revised 12/06/89 to show
reduction from 39.95 Acre
Tract to 38.53 Acre Tract.

Revised 9/21/90 to show
easements in area of
Southeast corner and
certification.

LEGEND

- = Trees 8" to 19" in Diameter
- X = Trees 19" and above in Diameter
- = Tract corners

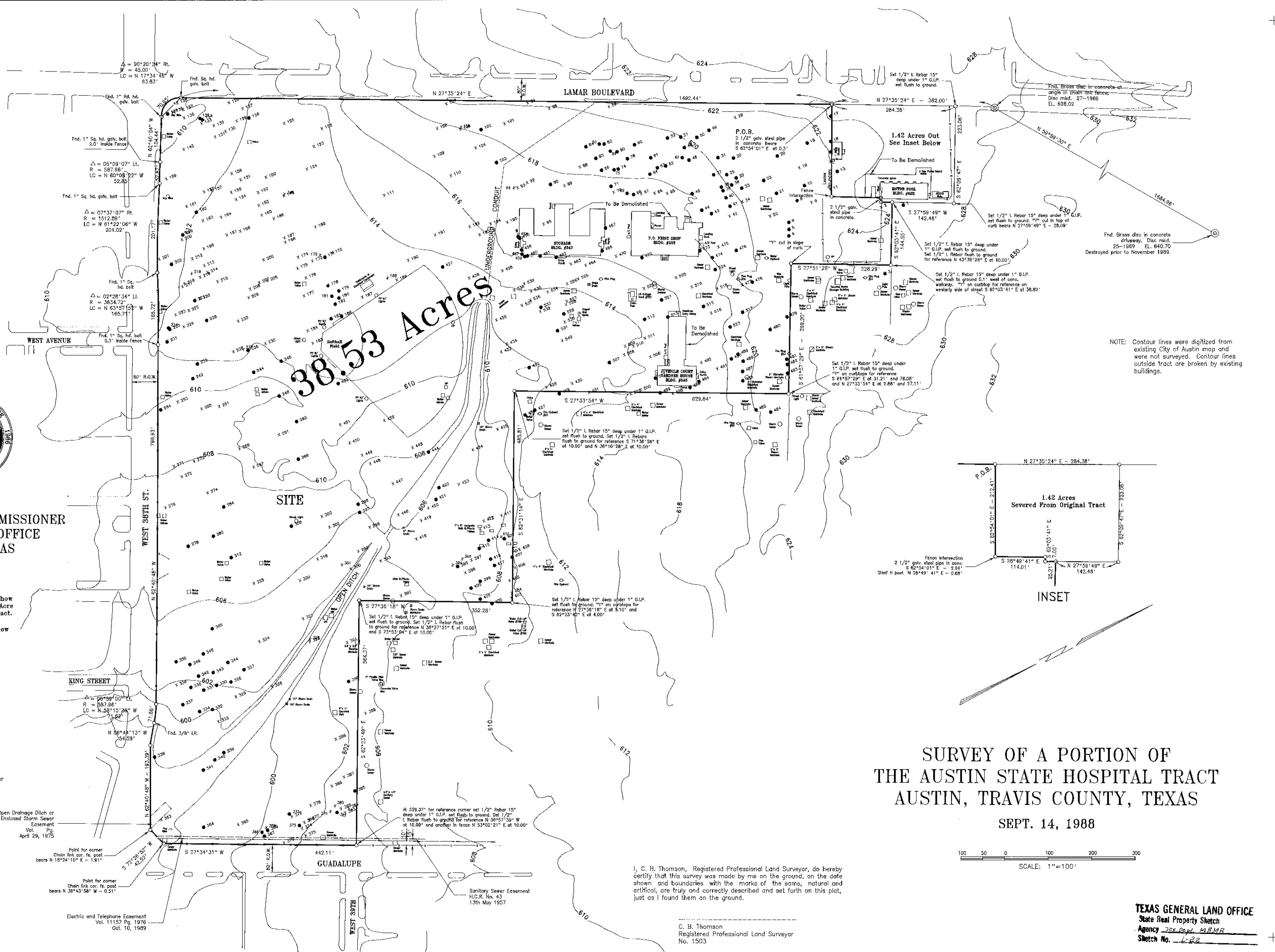
Open Drainage Ditch or
Enclosed Storm Sewer
Easement
Vol. Pg.
April 29, 1975

Point for corner
Chain link cor. fe. post
bears N 18°24'10" E - 1.91'

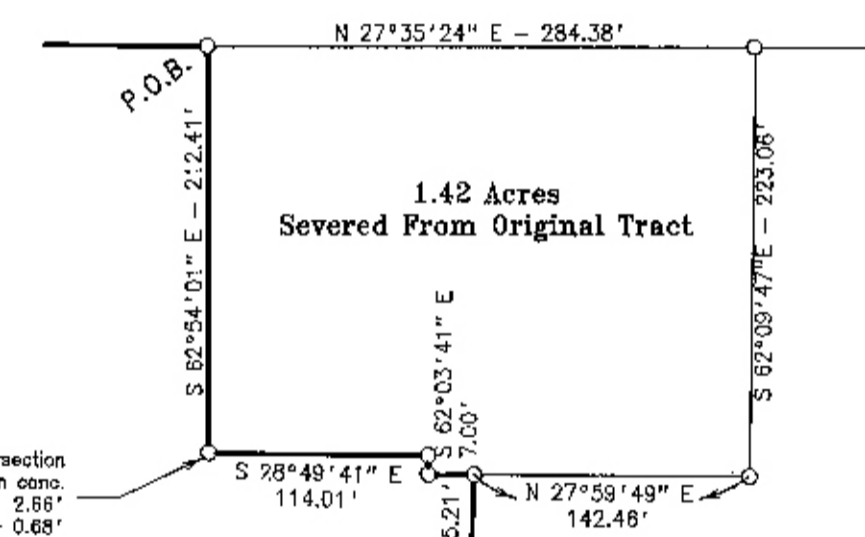
Point for corner
Chain link cor. fe. post
bears N 36°43'58" W - 0.51'

Electric and Telephone Easement
Vol. 11157 Pg. 1976
Oct. 10, 1989

Sanitary Sewer Easement
H.C.R. No. 43
13th May 1957

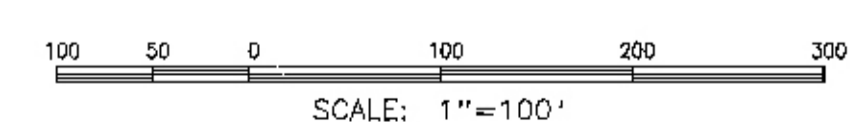


NOTE: Contour lines were digitized from
existing City of Austin map and
were not surveyed. Contour lines
outside tract are broken by existing
buildings.



SURVEY OF A PORTION OF
THE AUSTIN STATE HOSPITAL TRACT
AUSTIN, TRAVIS COUNTY, TEXAS

SEPT. 14, 1988



I, C. B. Thomson, Registered Professional Land Surveyor, do hereby
certify that this survey was made by me on the ground, on the date
shown and boundaries with the marks of the same, natural and
artificial, are truly and correctly described and set forth on this plat,
just as I found them on the ground.

C. B. Thomson
Registered Professional Land Surveyor
No. 1503

TEXAS GENERAL LAND OFFICE
State Real Property Sketch
Agency 305 Dept. 2471MR
Sketch No. L-22