

HUTCHINSON COUNTY
ROLLED SKETCH NO. 31

Cor. F/N

county #6070

For Sketch See
Other Side.

THE STATE OF TEXAS,
HUTCHINSON COUNTY.

Survey No. 1

Block No. M. 24

Grantee: T. C. R. R. Co

True Mag. Var. 11° 50' E.

CORRECTED FIELD NOTES of a re-survey of 631.5 acres of land situated in Hutchinson County, about 17 miles N50°W from Plemons, same being Section No. 1 Block No. M. 24, Certificate No. 993, issued to T. C.

R. R. Co., made by me as State Surveyor, by virtue of Title LXXXIX, Chapter One, Revised Civil Statutes of 1895.

(All lines surveyed parallel and perpendicular to a base passing from the N. E. corner of Survey 131 to the N. W. corner of Survey 134, Block 5 T.)

(All courses proved by observing Polaris, when in elongation. Azimuth 1° 28' 10".)

BEGINNING AT the N.W. corner of Survey #135 Block 5-T a stone 16x15x4" whence a windmill bears N. 64° 57' E. and another windmill bears N. 46° 22' 20" W...

Thence S. 4' 20" W., at 1075 vrs. cross a draw, at 1562 vrs. cross a road, at 1895.5 vrs. cross a fence, at 1900 vrs. a stone 18 x 11 x 14 the S.W. corner of Survey #135, at 2980 vrs. a stone 12x10 x 5 and an iron rod driven in ground, whence a windmill bears north 25° 36' 10" W. and another windmill bears N. 48° 26' 20" E. and Chism's windmill bears S. 11° 33' 20" E. and Parks' windmill bears S. 72° 42' 30" E. and Mayfield's windmill bears S. 62° 51' 40" E.

Thence N. 89° 55' 40" W., at 467 vrs. cross a draw, at 925 vrs. cross a draw, at 957.7 vrs. a stone 16x8x5" and an iron rod driven in ground on the west side of a furrow in the east boundary of the William Neil league.

Thence N. 40" W. with the east line of said league 185.2 vrs. to an iron pipe and four pits.

Thence S. 89° 59' 20" W. 254.3 vrs.

Thence N. 40" W. 2795.7 vrs. to a stone 24x14x5", whence a fence bears north 4.5 vrs. Thence S. 89° 55' 40" E. 1212 vrs. to the place of beginning.

Bearings record the angle from lines.

GLENN D. MACY, } Chain Carriers.
REESE MCGEE, }

I, W. D. TWICHELL, State Surveyor, do hereby certify that the foregoing re-survey is correct and that it was made by me in the field, in accordance with law, and that the limits, boundaries and corners with the marks, natural and artificial, are truly and correctly described in the foregoing plat and field notes.

Re-surveyed 3rd day of July 1908.

APPROVED: 1/9/1909

John J. Terrell
Commissioner General Land Office.

W. D. Twichell
State Surveyor.

corrected 76071

T. C.

No. 1. m²⁴
Inverness

Corrected Field Notes

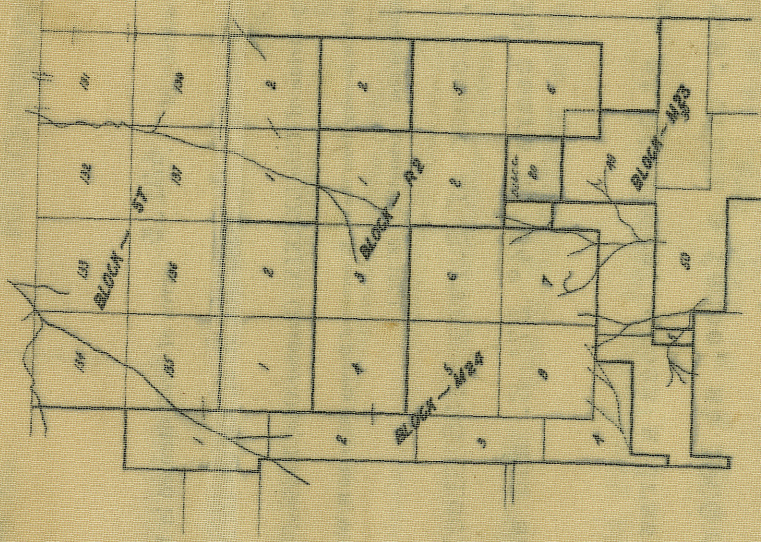
Survey No.

Block No. M. 24.

Grantee T. C. R. R. CO.
Hutchinson County.

Filed in Land Office this _____ day
_____ 190 _____

Commissioner.



FILED AS EVIDENCE
OCT 2 1912
E. J. PICKENS
OFFICIAL RECORDER
48

H. T. PRIGG, TRANSITMAN
H. D. MARTIN, JOB PRINTER, AMARILLO, TEX.

C/C B.T.H.
12/16/08

Keep with Hutchinson Co. rolled sk. 31.

county 46072

county 46095

For Sketch See
Other Side.

THE STATE OF TEXAS,
HUTCHINSON COUNTY.

Survey No. 2

Block No. M. 24

Grantee: T. C. R. R. Co

True Mag. Var. 11° 50' E.

CORRECTED FIELD NOTES of a re-survey of 504.5 acres of land situated in Hutchinson County, about 16 miles N54°W from Plemons, same being Section No. 2 Block No. M. 24, Certificate No. 993, issued to T. C.

R. R. Co., made by me as State Surveyor, by virtue of Title LXXXIX, Chapter One, Revised Civil Statutes of 1895.

(All lines surveyed parallel and perpendicular to a base passing from the N. E. corner of Survey 131 to the N. W. corner of Survey 134, Block 5 T.)

(All courses proved by observing Polaris, when in elongation. Azimuth 1° 28' 10".)

BEGINNING AT the S.E. corner of Survey #1 this block a stone 12x10x5" and an iron rod driven in ground, whence a windmill bears N. 25° 36' 10" W. and another windmill bears N. 48° 26' 20" E. and Chism's windmill bears S. 11° 33' 20" E. and Parks' windmill bears S. 72° 42' 30" E. and Mayfield's windmill bears S. 62° 51' 40" E.

Thence S. 4' 20" W. at 585 vrs. cross a road, at 779 vrs. cross a fence, at 820 vrs. an iron pipe 3/4 x 36" driven in ground and two pits, whence four pits bears north 19° 42' W. 58 vrs., at 2546 vrs. cross a road, at 2720 vrs. the S.W. corner of Survey #4 this block. an iron pipe 1/2 x 36" driven in ground and a stone 13x6x4" whence Chism's windmill bears N. 83° 50' E. and Parks' windmill bears N. 51° 13' 40" E. and Mayfield's windmill bears S. 88° 42' 30" E. at 2980 vrs. a stone 20x12x3" and an iron rod 3/4 x 24" driven in ground.

Thence N. 89° 55' 40" W. 953.5 vrs. to a stone 16x14x3" and an iron pipe in ditch in the east boundary of the William Neil league.

Thence N. 40" W. with the east line of said league 2980 vrs. to a stone 16x8x5" and an iron rod on the west side of a furrow the south S.W. corner of Survey #1 this block.

Thence S. 89° 55' 40" E. at 32.7 vrs. and 490.7 vrs. cross draws, at 957.7 vrs. to the place of beginning.

Bearings record the angle from lines.

GLENN D. MACY, } Chain Carriers.
REESE MCGEE, }

I, W. D. TWICHELL, State Surveyor, do hereby certify that the foregoing re-survey is correct and that it was made by me in the field, in accordance with law, and that the limits, boundaries and corners with the marks, natural and artificial, are truly and correctly described in the foregoing plat and field notes.

Re-surveyed 3" day of July 1908.

APPROVED: 1/9/1909

John J. Terrell
Commissioner General Land Office.

W. D. Twichell
State Surveyor.

Corrected Field Notes

Survey No.

Block No. M. 24.

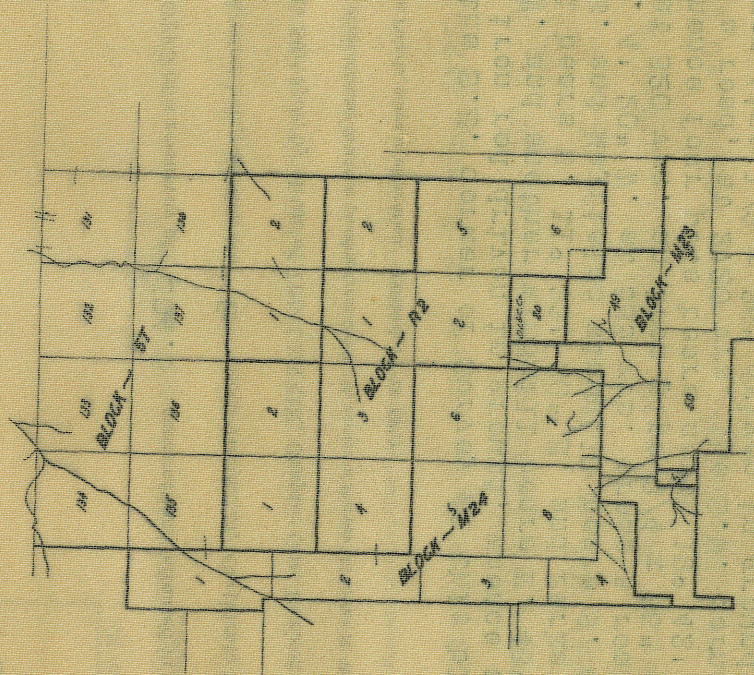
Grantee T. C. R. R. CO.

Hutchinson County

Filed in Land Office this _____ day

190

Commissioner.



H. E. TRING, TRANSITMAN

M. M. MARTIN, JOB PRINTER, AMARILLO, TEX.

C/O B.J.H.
12/16/08

Keep with Hutchinson Co. rolled sk. 31.

counted 1600

For Sketch See
Other Side.

THE STATE OF TEXAS, HUTCHINSON COUNTY.

Survey No. 3

Block No. M. 24

Grantee: T. C. R. R. Co

True Mag. Var. $11^{\circ} 50'$ E.

CORRECTED FIELD NOTES of a re-survey of 428.5 acres of land situated in Hutchinson County, about 15 miles $N59^{\circ}W$ from Plemons, same being Section No. 3 Block No. M. 24, Certificate No. 991, issued to T. C.

R. R. Co., made by me as State Surveyor, by virtue of Title LXXXIX, Chapter One, Revised Civil Statutes of 1895.

(All lines surveyed parallel and perpendicular to a base passing from the N. E. corner of Survey 131 to the N. W. corner of Survey 134, Block 5 T.)

(All courses proved by observing Polaris, when in elongation. Azimuth $1^{\circ} 28' 10''$.)

BEGINNING AT the S.E. corner of Survey #2 this block a stone 20x12x3" and an iron rod $3/4$ x20" driven in ground.

Thence S. $4' 20''$ W., at 1640 vrs. a stone 10x8x2", whence windmill bears N. $72^{\circ} 16' 30''$ E., at 2555.5 vrs. a stone 12x9x2" and four pits.

Thence N. $89^{\circ} 55' 40''$ W. 926.3 vrs. to a stone 16x10x3" in the east boundary of the J. J. Hall league.

Thence N. 40" W. with the east boundary of said league 563 vrs. to an iron pipe and four pits its south N.E. corner.

Thence W. 23 $1/2$ vrs. to the S.E. corner of the Mary L. Anglin survey #4.

Thence N. 40" W. at 162 vrs an iron pipe and four pits the S.E. corner of the William Neil league, at 1992.5 vrs. a stone 16x14x3" and an iron pipe in ditch, the S.W. corner of Survey #2 this block.

Thence S. $89^{\circ} 55' 40''$ E. 953.5 vrs. to the place of beginning.

Bearings record the angle from lines.

GLENN D. MACY, } Chain Carriers.
REESE MCGEE, }

I, W. D. TWICHELL, State Surveyor, do hereby certify that the foregoing re-survey is correct and that it was made by me in the field, in accordance with law, and that the limits, boundaries and corners with the marks, natural and artificial, are truly and correctly described in the foregoing plat and field notes.

Re-surveyed 5" day of July 1908.

APPROVED: 1/9/1909

John J. Terrell
Commissioner General Land Office.

W. D. Twichell
State Surveyor.

Corrected Field Notes

Survey No.

Block No. M. 24.

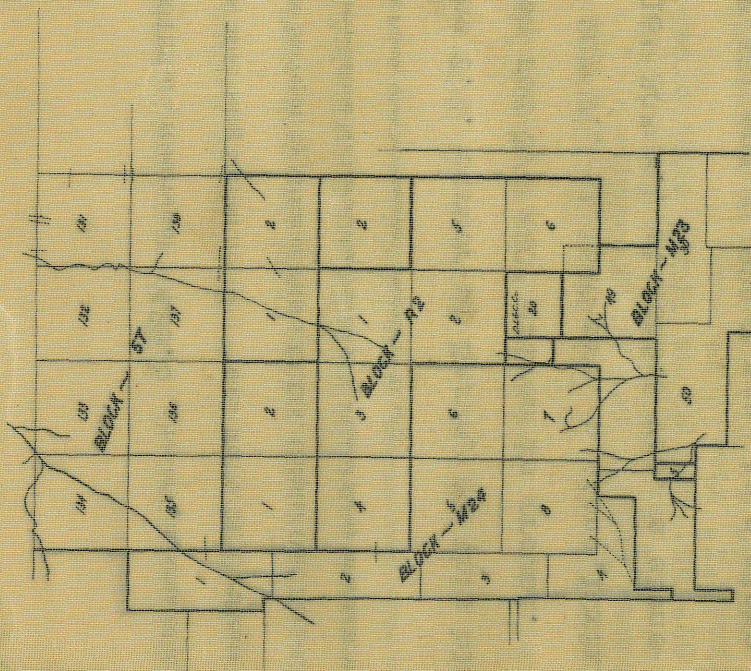
Grantee T. C. R. R. CO.

Hutchinson County

Filed in Land Office this _____ day

190

Commissioner.



M. E. MARTIN, FOR PRINTER, AMARILLO, TEX.

C/O B.J.D.
12/16/08

counted 96076

Keep with Hutchinson Co. rolled sh. 31.

For Sketch See
Other Side.

THE STATE OF TEXAS,
HUTCHINSON COUNTY.

Survey No. 4

Block No. M. 24

Grantee: T. C. R. R. Co

True Mag. Var. 11° 50' E.

CORRECTED FIELD NOTES of a re-survey of 494.7 acres of land situated in Hutchinson County, about 14 miles N62°W from Plemons, same being Section No. 4 Block No. M. 24, Certificate No. 991, issued to T. C.

R. R. Co., made by me as State Surveyor, by virtue of Title LXXXIX, Chapter One, Revised Civil Statutes of 1895.

(All lines surveyed parallel and perpendicular to a base passing from the N. E. corner of Survey 131 to the N. W. corner of Survey 134, Block 5 T.)

(All courses proved by observing Polaris, when in elongation. Azimuth 1° 28' 10".)

BEGINNING AT the S.E. corner of Survey #3 this block a stone 12x9x2" and four pits.

Thence S. 4' 20" W. 984.5 vrs. to a stone 12x10x8" and three pits.

Thence S. 89° 55' 20" E. at 279 and 976 vrs. cross roads, at 1216.7 vrs. a stone 11x8x2" set in ground.

Thence S. 4' 45" W. 788.5 vrs. to four pits.

Thence N. 89° 55' 20" W. at 734.9 vrs. cross a road, at 1216.7 vrs. a stone marked "X" set in ground.

Thence S. 4' 10" W. 774 vrs. to a stone 12x5x3" set in ground.

Thence N. 89° 56' W. 250 vrs. to the E.B. of the J.J. Hall league.

Thence N. 40" W. 2547 vrs. to a stone 16x10x3" the S.W. corner of Survey #3 this block.

Thence S. 89° 55' 40" E. 926.3 vrs. to the place of beginning.

Bearings record the angle from lines.

GLENN D. MACY, } Chain Carriers.
REESE MCGEE, }

I, W. D. TWICHELL, State Surveyor, do hereby certify that the foregoing re-survey is correct and that it was made by me in the field, in accordance with law, and that the limits, boundaries and corners with the marks, natural and artificial, are truly and correctly described in the foregoing plat and field notes.

Re-surveyed 6th day of July 1908.

APPROVED: 1/9/1909

Commissioner General Land Office.

W. D. Twichell
State Surveyor.

Commissioner General Land Office.

Corrected Field Notes

Survey No.

Block No. M. 24.

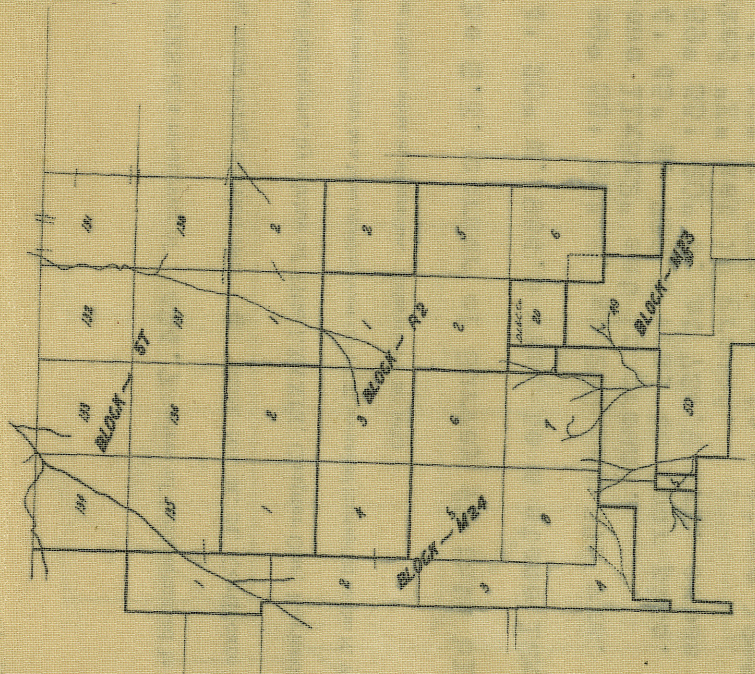
Grantee T. C. R. R. CO.

Hutchinson County

Filed in Land Office this day

190.....

Commissioner.



ERROR IN Dep 673 VS

B 5 D 12/16/08

H. T. TRIGG, TRANSMAN

M. B. MARTIN, JOB PRINTER, AMARILLO, TEX.

C107

Keep with Hutchinson Co. rolled sk. 31.

county 76078

For Sketch See
Other Side.

THE STATE OF TEXAS,
HUTCHINSON COUNTY.

Survey No. 7

Block No. M. 24

Grantee: T. C. R. R. Co

True Mag. Var. 11° 50' E.

CORRECTED FIELD NOTES of a re-survey of 640 acres of land situated in Hutchinson County, about 13 miles N57°W from Plemons, same being Section No. 7, Block No. M. 24, Certificate No. 996, issued to T. C.

R. R. Co., made by me as State Surveyor, by virtue of Title LXXXIX, Chapter One, Revised Civil Statutes of 1895.

(All lines surveyed parallel and perpendicular to a base passing from the N. E. corner of Survey 131 to the N. W. corner of Survey 134, Block 5 T.)

(All courses proved by observing Polaris, when in elongation. Azimuth 1° 28' 10".)

BEGINNING AT the S.W. corner of Survey #6 this block a stone 16x14x6", whence McFarland's windmill bears N. 71° 23' 20" E.

Thence S. 5' W. 1900 vrs. to a small stone and four pits.

Thence S. 89° 54' 45" E. at 543 vrs. cross a fence, at 1100 and 1670 vrs. cross draws, at 1900 vrs. a stone marked "X" and a small pile of stones

Thence N. 5' 30" E. at 1900 vrs. a stone 13x14x5" and four pits the S.E. corner of Survey #6 this block.

Thence N. 89° 54' 45" W. at 1900 vrs. the beginning corner of this survey.

Bearings record the angle from lines.

GLENN D. MACY, } Chain Carriers.
REESE MCGEE,

I, W. D. TWICHELL, State Surveyor, do hereby certify that the foregoing re-survey is correct and that it was made by me in the field, in accordance with law, and that the limits, boundaries and corners with the marks, natural and artificial, are truly and correctly described in the foregoing plat and field notes.

Re-surveyed 7th day of July 1908.

APPROVED: 1/9/1909

John J. Ferrell
Commissioner General Land Office.

W. D. Twichell
State Surveyor.

Corrected Field Notes

Survey No.

Grantee T. C. R. R.

Filed in Land Office

Block No. M. 24

Corrected Field Notes

Survey No.

Block No. M. 24.

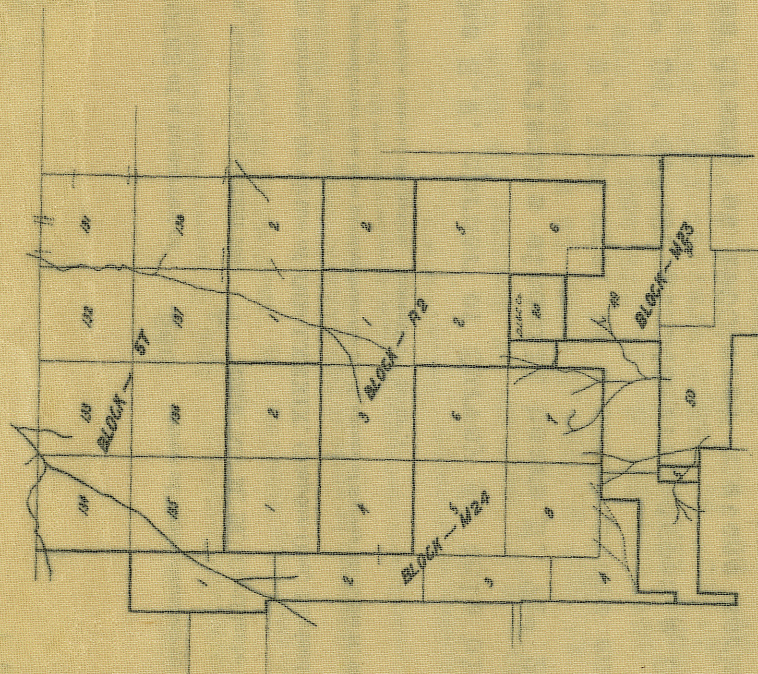
Grantee T. C. R. R. CO.

Hutchinson County

Filed in Land Office this day

190

Commissioner.



H. T. TRIGG, TRANSITMAN

H. B. MARLIN, JOB PRINTER, AMARILLO, TEX.

c/c B.S.D.
12/16/08

Keep with Hutchinson Co. rolled sk. 31

counter 46080

For Sketch See
Other Side.

THE STATE OF TEXAS,
HUTCHINSON COUNTY.

Survey No. 8
Block No. M. 24
Grantee: T. C. R. R. Co

True Mag. Var. 11° 50' E.

CORRECTED FIELD NOTES of a re-survey of 640 acres of land situated in Hutchinson County, about 14
miles N60°W from Plemons, same being Section No. 8 Block No. M. 24, Certificate No. 996, issued to T. C.

R. R. Co., made by me as State Surveyor, by virtue of Title LXXXIX, Chapter One, Revised Civil Statutes of 1895.

(All lines surveyed parallel and perpendicular to a base passing from the N. E. corner of Survey 131 to the N. W. corner of Survey 134, Block 5 T.)

(All courses proved by observing Polaris, when in elongation. Azimuth 1° 28' 10".)

BEGINNING AT the S.W. corner of Survey #5 this block a stone 10x8
x2", whence a windmill bears N. 72° 16' 30" E.

Thence S. 4' 20" W. at 915.5 vrs. the S.E. corner of Survey
#3 this block a stone 12x9x2" and four pits, at 1900 vrs. a stone
12x10x8" and three pits an interior corner of Survey #4 this block.

Thence S. 89° 56' 20" E. at 279 and 976 vrs. cross roads, at
1216.7 vrs. a stone 11x8x2" the south N.E. corner of Survey #4 this
block a stone 11x8x2", at 1291.7 vrs. cross a road, at 1900 vrs. a
small stone and four pits the S.W. corner of Survey #7 this block.

Thence N. 5' E. 1900 vrs. to a stone 16x14x6" the S.E. corner
of Survey #5 this block, whence McFarland's windmill bears N. 71°
23' 20" E.

Thence N. 89° 55' 20" W. 1900 vrs. to the place of beginning.

Bearings record the angle from lines.

GLENN D. MACY, } Chain Carriers.
REESE MCGEE,

I, W. D. TWICHELL, State Surveyor, do hereby certify that the foregoing re-survey is correct and that it was made by me in
the field, in accordance with law, and that the limits, boundaries and corners with the marks, natural and artificial, are truly and
correctly described in the foregoing plat and field notes.

Re-surveyed 6" day of July 1908.

APPROVED: 11/9/1909

John J. Terrell
Commissioner General Land Office.

W. D. Twichell
State Surveyor.

counter 46081

Corrected Field Notes

Survey No.

Block No. M. 24.

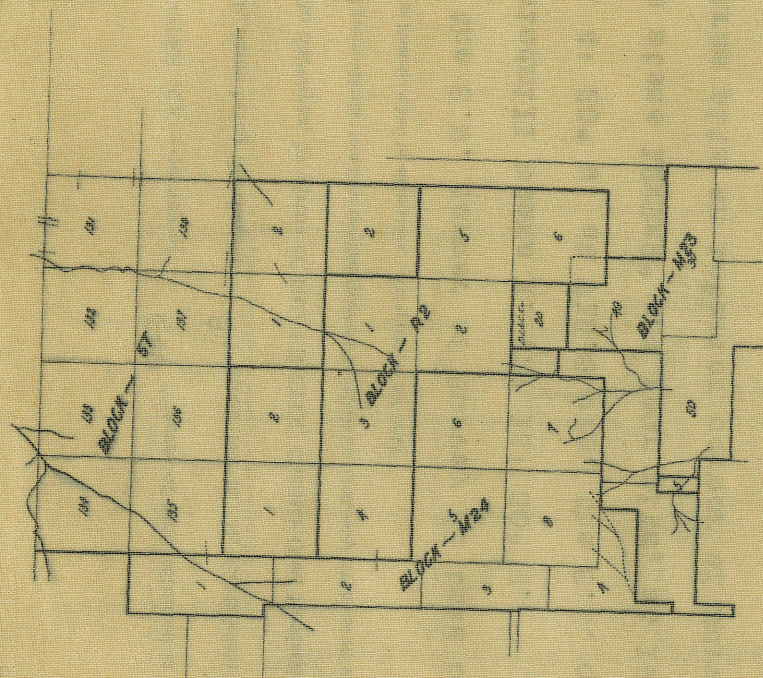
Grantee T. C. R. R. CO.

Hutchinson County

Filed in Land Office this _____ day

190

Commissioner.



H. T. TRIGG, TRANSFERMAN

M. B. MARTIN, JOB PRINTER, AMARILLO, TEX.

c/c B.T.A.
12/16/08

Keep with Hutchinson Co. rolled sk. 31.

county 46032

For Sketch See
Other Side.

THE STATE OF TEXAS,
HUTCHINSON COUNTY.

Survey No. 5
Block No. M. 24
Grantee: T. C. R. R. Co

True Mag. Var. $11^{\circ} 50' E$.

CORRECTED FIELD NOTES of a re-survey of 640 acres of land situated in Hutchinson County, about 14 miles $N55^{\circ}W$ from Plemons, same being Section No. 5, Block No. M. 24, Certificate No. 995, issued to T. C.

R. R. Co., made by me as State Surveyor, by virtue of Title LXXXIX, Chapter One, Revised Civil Statutes of 1895.

(All lines surveyed parallel and perpendicular to a base passing from the N. E. corner of Survey 131 to the N. W. corner of Survey 134, Block 5 T.)

(All courses proved by observing Polaris, when in elongation. Azimuth $1^{\circ} 28' 10''$.)

BEGINNING AT the S.W. corner of Survey #4 Block R 2 a $1/2 \times 36$ " iron pipe driven in ground and a stone $13 \times 6 \times 4$ ", whence Chism's windmill bears $N. 83^{\circ} 50' E$. and Parks windmill bears $N. 51^{\circ} 13' 40" E$. and Mayfield's windmill bears $S. 88^{\circ} 42' 30" E$.

Thence $S. 4' 20" W$. at 260 vrs. pass the S.E. corner of Survey #2 this block a stone $20 \times 12 \times 3$ " and an iron rod $3/4 \times 24$ " driven in ground, at 1900 vrs. a stone $10 \times 8 \times 2$ ", whence a windmill bears $N. 72^{\circ} 16' 30" E$.

Thence $S. 89^{\circ} 55' 20" E$. 1900 vrs. to a stone $16 \times 14 \times 6$ ", whence McFarland's windmill bears $N. 71^{\circ} 23' 20" E$..

Thence $N. 5' E$. 1900 vrs. to a stone $18 \times 9 \times 3$ " and four pits. (Stone is in east pit), the S.E. corner of Survey #4 Block R-2.

Thence $N. 89^{\circ} 55' 20" W$. 1900 vrs. to the place of beginning.

Bearings record the angle from lines.

GLENN D. MACY, } Chain Carriers.
REESE MCGEE, }

I, W. D. TWICHELL, State Surveyor, do hereby certify that the foregoing re-survey is correct and that it was made by me in the field, in accordance with law, and that the limits, boundaries and corners with the marks, natural and artificial, are truly and correctly described in the foregoing plat and field notes.

Re-surveyed 6th day of July 1908.

APPROVED: 1/9/1909

John J. Terrell
Commissioner General Land Office.

W. D. Twichell
State Surveyor.

counter 46083

Corrected Field Notes

Survey No.

Block No. M. 24.

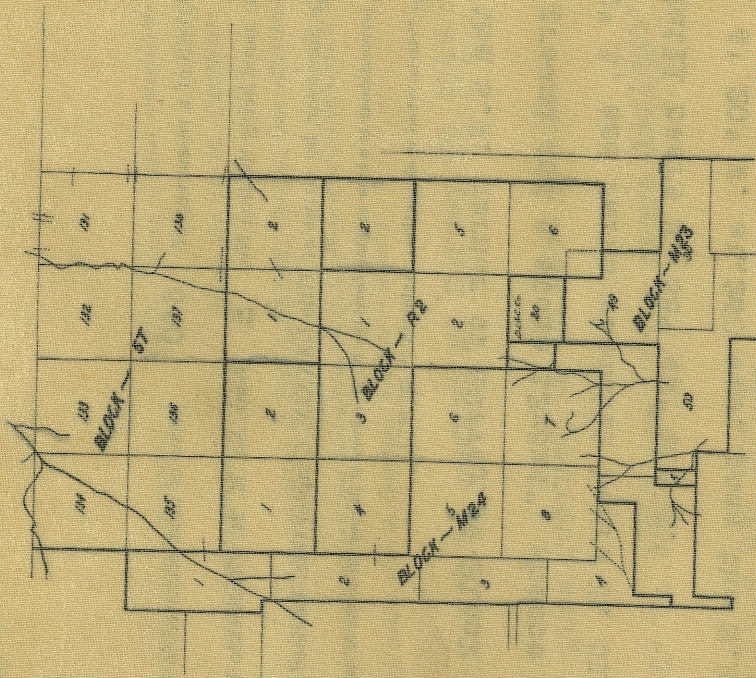
Grantee T. C. R. R. CO.

Hutchinson County

Filed in Land Office this _____ day

190

Commissioner.



M. T. TRIGG, TRANSITMAN

H. B. MARTIN, JOB PRINTER, AMARILLO, TEX.

C/O B.S.B.
12/16/08

county 46084

Keep with Hutchinson Co. rolled sk. 31

For Sketch See
Other Side.

THE STATE OF TEXAS,
HUTCHINSON COUNTY.

Survey No. 6

Block No. M. 24

Grantee: T. C. R. R. Co

True Mag. Var. 11° 50' E.

CORRECTED FIELD NOTES of a re-survey of 640 acres of land situated in Hutchinson County, about 14 miles N54°W from Plemons, same being Section No. 6 Block No. M. 24, Certificate No. 995, issued to T. C.

R. R. Co., made by me as State Surveyor, by virtue of Title LXXXIX, Chapter One, Revised Civil Statutes of 1895.

(All lines surveyed parallel and perpendicular to a base passing from the N. E. corner of Survey 131 to the N. W. corner of Survey 134, Block 5 T.)

(All courses proved by observing Polaris, when in elongation. Azimuth 1° 23' 10".)

BEGINNING AT the N.E. corner of Survey #5 this block a stone 18x9x3" and four pits (corner is in east pit).

Thence S. 5' W. 1900 vrs. to a stone 16x14x6", whence McFarland's windmill bears N. 71° 23' 20" E.

Thence S. 89° 54' 45" E. at 1900 vrs. a stone 18x14x5" and four pits.

Thence N. 5' 30" E. at 1900 vrs. the S.E. corner of Survey #3 Block R.2., a stone 22x11x5" and four pits.

Thence N. 89° 54' 45" W. 1900 vrs. to the place of beginning.

Bearings record the angle from lines.

GLENN D. MACY, } Chain Carriers.
REESE MCGEE,

I, W. D. TWICHELL, State Surveyor, do hereby certify that the foregoing re-survey is correct and that it was made by me in the field, in accordance with law, and that the limits, boundaries and corners with the marks, natural and artificial, are truly and correctly described in the foregoing plat and field notes.

Re-surveyed 5th day of July 1908.
APPROVED: 1/9/1909

John J. Fennell
Commissioner General Land Office.

W. D. Twichell
State Surveyor.

counter 76085

Corrected Field Notes

Survey No.

Block No. M. 24.

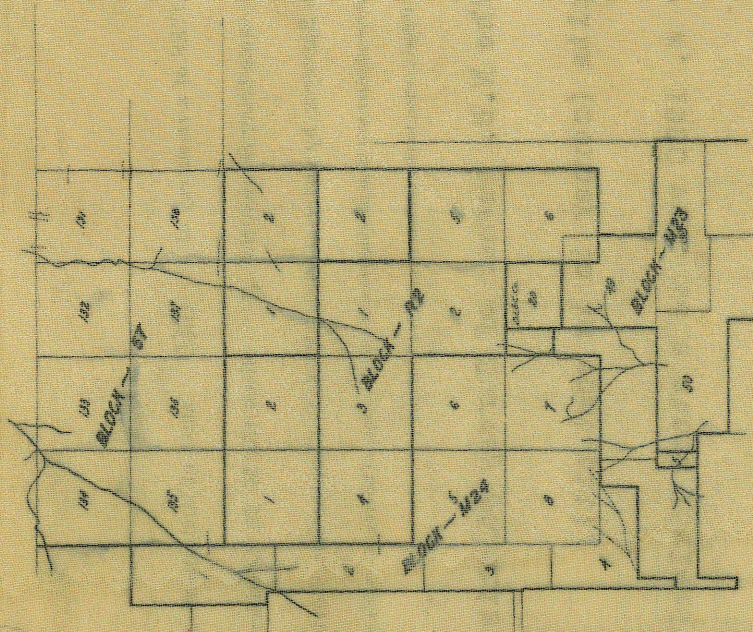
Grantee T. C. R. R. CO.

Hutchinson County

Filed in Land Office this _____ day

190

Commissioner.



H. T. TRIGO, TRANSITMAN

H. B. MARTIN, JOB PRINTER. ARABILLO, TEX.

C/C B.S.M.
12/16/08

Keep with Hutchinson Co. rolled sk. 31.

counter 46088



I, W. D. Twichell, State Surveyor, do hereby certify
that this sketch is true and correct.

FIELD SKETCH NO. 31

COUNTY: Hutchinson

W. D. Twichell
State Surveyor

COUNTY # B2302

Hutchinson County Rolled Sk. 31"
Sk. Cor. F/N. in the East part of Hutchinson Co.
By W.D. Twichell
(cor. F/N. in flat folder in drawer with ~~other~~
rolled sketches)