

JEFF DAVIS COUNTY
ROLLED SKETCH NO. 13

Report of Progress and Letter by R. S. Dod

counter 46213

March 9, 1922.

Captain R S Dod,
Alpine, Texas.
Dear Sir:-

Referring to your Report of Progress and plat of certain surveys and blocks of surveys in the H L Kokernot pasture in Jeff Davis county and Brewster county, dated Sept. 12, 1921, beg to advise that I have had this matter under consideration for some time and have tried to work out some solution of construction of blocks 320, 321 and 344, based on original corners found by you, that would harmonize with the surrounding older blocks and surveys for which they call, but am unable to find any general construction better than that outlined by you, so have concluded to accept same with the following suggestions or amendments, viz:

In adjusting or correcting the Eastern and Northern tier of surveys in block 320, also the North tier in 344, where there are no cross calls or ties that would otherwise control, the individual or odd numbered surveys should be held to field note calls for course and distance and the adjoining school survey given all the excess, as indicated by yellow lines on blue print copy of your sketch herewith enclosed.

This plan is also suggested for the wide tier of surveys North of survey 13 block 321. This adjustment of excess is suggested on the assumption that same would be agreeable to the owners of all surveys affected. If, however, such adjustment is not agreeable, then your plan as shown by sketch should be followed with respect to these particular surveys. This adjustment would allow the owner of school surveys to pay for the excess and get title from the State to same, while if it should be distributed between the school and individual surveys alike, such excess in the individual sections could not be patented.

Counters 76214

Survey 7, block 321, should extend South from the SE corner of No. 12, its field note distance of 771 vrs, and extend west to survey 518. No. 6 should include all of the area from the S line of No. 7 as above fixed, to survey 519 on the South as shown on your plat.

Field notes of survey No. 21, block 321 on which patent is outstanding ties it to the NE and NW corners of survey 519, ~~xxx~~ with same described corners, thereby placing it in conflict with surveys Nos. 6 and 7, block 321, and 29, D L & C Co. leaving the space covered by its corrected field notes South of No. 29 D L & C Co. vacant. This space was applied for as vacant land by H L Koker- not, in 1915 and sold to him as survey No. 21-B, for 659 acres, field notes of which are of record in book D page 266, surveyor's records of Jeff Davis county. This scrap survey also covers the excess or space between No. 29, D L & C Co. and No. 27, HE & WF Ry Co., on the east and survey 224 block 9, on the west, as shown on plat.

Said survey 21, as patented, should be corrected to respect surveys 6 and 7 block 321 and the Day Land & Cattle Company survey 29 corrected to respect No. 21. However, if surveys 21 and 29 are both owned by the same person, in order to avoid having to correct each survey, No. 21, may be corrected so as to include that part between Nos. 6 and 29, and let No. 29, stand on its present patent.

It is noted that scrap surveys Nos. 31 and 32, SF 8349-50 in name of W E Pruett, have been allowed between surveys Nos. 21 and 23, block 344 and surveys 744, 346 and 365 on their west, and by deed dated Feb. 7, 1914, these surveys, together with a number of others, were conveyed to H L Koker- not. As these scrap surveys were allowed in order to take up the excess between and west of said surveys Nos. 21 and 23, and same recognized in their purchase by Mr. Kokernot, whatever space there may be between course and distance calls of said Nos. 21 and 23, and the surveys on their west, should be given to these scrap surveys, and corrected field notes

filed accordingly.

Section 29, block 344, according to its corrected patented field notes appears in conflict with No. 28. This patent may be cancelled and re-issued on corrected field notes embracing just 640 acres, and let the excess shown on your plat be adjusted in either Nos. 28 or 30.

W S Mabry, State Surveyor, resurveyed blocks Nos. 1 and 2 H & T O Ry Co., in 1889. According to his field notes of section 6 block 2, the NE corner of that survey is 202 yrs East of the SE corner of section No. 1, block 1. The SE corner of No. 6, by W S Mabry, calls for a pile of stone, whence lone tree betwixt rocky cliffs brs S $20\frac{1}{2}$ E about $\frac{3}{4}$ mile, and Levermans monument on Boulder peak brs N $75\frac{1}{2}$ W. It is noted that you did not have the Mabry field notes of No. 6, and it would seem that the rock mound pointed out to you for this corner is slightly too far west. This should be verified and No. 1, block WJG 6, made to conform to the correct position of No. 6, and corrected to close on No. 341, M D Jordan, for which it calls, and constructing the other surveys in this block WJG 6 from this position of No. 1, as shown on plat.

There are no calls in the patented field notes of sections Nos. 7 and 8, block WJG 6 to fix their ~~corner~~ corners at any particular point on the line of section No. 73, block 9 GH & SA Ry Co. hence the SW corner of No. 7 should be fixed according to its field note calls for course and distance, which would allow full space for Nos. 3 and 8, same block.

With these exceptions, your plan of constructing and correction of the other surveys shown on your plat appears to be correct.

Respectfully,

Commissioner.

SCC/w.

counter
1621/6

Lo 2

9/16/21

Report
on a Survey of
Certain Lands in Jeff Davis & Brewster Counties
in the H.L. Kokernot Pasture.

Hon. J. T. Robison
Commissioner General Land Office
Austin, Texas

Dear Sir,

I herewith submit the following report and map of a survey made by me as Licensed Land Surveyor.

Object of the Survey.

To locate the outside boundary line of the Kokernot Pasture in Brewster and Jeff Davis Counties, including Surveys 12, Block 11 CHASA, Block 344 OGASF., Blocks WJO 6 & 10, Block 320 BLANK, Block 321 R. Ry. Co., Blocks 9 & 10 CHASA, and Block 246 TASH.

To locate and connect the original and holding corners in these Blocks, on which the unmarked survey lines depend.

To submit a report of the survey to your office for your consideration and instruction, so that a definite and final adjustment can be made of the lines and corners of surveys involved.

Authority for the Survey.

Request of H.L. Kokernot, owner of the lands involved.

Data for the Survey.

Official County Maps of Jeff Davis and Brewster Counties.

Fieldnotes of Surveys involved, from Records in Fort Davis and Alpine.

Working Sketch from General Land Office, dated 1-15-13, showing the Hallet Survey 28 and surrounding Surveys, and S.F. 2349 and S.F. 10664.

Working Sketch, dated 1-9-07, showing Surveys 6 and 7 Block 321, and Surveys in Block 320 and Block 11.

Blue Print of Mabrys Official Sketch of Blocks 1 and 2 H & T C

Sketch and Report of Survey of the McCutcheon Ranch, made by R.S. Dod and reported and filed in the General Land Office.

Blue Print of Sketch by Mr. J. W. Merrill, County Surveyor of Jeff Davis County, of connecting lines run 1915-1916, filed in the General Land Office.

Preliminary Examination of the Field Notes.

We note that Block 11 was resurveyed by Greene and the corners marked and note his resurvey connect with the original work at N W corner of Survey 21. In report of the McCutcheon Survey, Greene's corners and lines were retraced from this corner to the S W corner of Survey 28, the S W corner of the Block. The Greene work is good, a few small errors in course and distance were noted. Please note that he runs a tier of Surveys, from Survey 16, on the south line, north through the Block, 16-32-76-106 etc., which tier calls for 2716 varas in width instead of 1900. This will be referred to later.

Greene also resurveyed Block 10. In a resurvey of Block 10 we retraced his work from Leoncita to the east line of Block 10, and in a resurvey of Block A retraced the east line of Block 10. Greene's work in this Block was good an excess of some 7 varas per mile was found East and West. On checking Needle on true Meridian at the S W corner of 1 Block 10 and on east line of Block 10, an unexpected increase of 1° in Azimuth was found on the east line, where one would normally expect a decrease eastward.

We cross sectioned the Orient right of way at one time tying to Greene's corners from Leoncita to S W 1 Block 10.

Prior to this the check was made from S W 208 Block 9 to S W 1 Block 10 as given by Ammerman for Block 9 and by Greene for Block 10, both corners were then in existence. S W 208 ~~xxxxxxx~~ Block 9 was destroyed when the Orient was built. Mr. Finball, adjacent land owner was told by the construction foreman that they had covered it up. S W 1 Block 10 is in Hancock's Johnson grass field and has disappeared. I connected it with the S W 1 some 4 years ago, but Mr. Hancock tells me he thinks his Mexican plowed it up, or that it was covered by flood drift

counter No 217

I could not find it on this trip although I could closely approximate its former position from the fence at the S W corner of the field and bearings at corner. I noted that the flood waters had carried the wire from the west fence several hundred yards into the field and covered it in places with sand and dirt several inches deep. The corner may still be there under the wash.

We note that Greene calls for the N W corner of Block 10 as 81 varas west of his S W corner of 10 Block 11.

Near the S W corner of Block 11 is the old rock mound in Wild Rose Flat set by Tom Murphy for the N E corner of 383 in 1879. Mr. Thompson calls for this corner as a corner of 29 M K & T E Block 344 and gives bearings. Mr. Merrill identified it and gives bearings. We identified it by its location, the Thompson and Merrill bearings and connection to original corner in Frazier Canyon, one mile west as reported in McCutcheon Survey. This is the only old corner with bearings called for in original fieldnotes of Block 344 by Mr. Thompson Surveyor.

On this corner depend 383-384-647 and 648 and it connects with 471 and 472. We found a rock mound at the N E 471 which corresponded with Murphy's description of the original corner, no bearings as before reported. 743 and 744 tie to 333 and 334 and these to N 11. This connection was run and reported. N E 11 being identified by Mabrys call at N W 8, H & T C 1. Here the connections ceases and the surveys South tie to the Mallet 22.

The call for the Mallet to be a certain course and distance from Survey 6 at Fort Davis is I think purely formal.

The N E corner calls for a rock mound N 60° E 147 varas from what I understand as "south point". Near the corner is a rocky ridge running south, and there are two ledges and extreme south point. But the S E corner has a call for west bank of creek which gives a definite natural object, limiting the easting of the south line, there to a dry creek on the ground and it is a rock channel and has not moved much for a long time, it runs nearly north and south near S W 22.

The H&TC surveys call for the Mallet where Mabry supposed it was, but there are no corners on the west side of 22. Mabrys H&TC corners are on the ground and easily found and identified and their bearings show that they have not been moved.

There are no corners south until we reach Thompsons preemption Survey 341 made for M.D. Jordan. These fieldnotes call for S E corner of Survey 6 H&TC 2, a marked corner and they call for three marked corners with bearings, the two north corners of 341 we found on the ground.

WJG 8 has two marked corners called for on the north line of Block 9, S W 7 and S W 8 call for Surveys 73 and 74 these were found and the marked ~~corner~~ N W corner of Survey 2 WJG 10 by same surveyor was also found. Other marked corners in WJG 10, S W 17, N E 16, N W 15 N E 13 and N E 12 were found. But unfortunately there is considerable irregularity in course and distance between these corners.

In the upper part of the WJG 10 in certain pairs of old surveys marked by old corners with bearings, 359 and 415 were put in to cover the valley where the Mexicans had several farms. The N W corners 359 is well known and easily identified the marked N W corner of 415 was found and identified, 417 connects with this corner, 669 connects with 359. The WJG 10 surveys 3 to 11 and 14 call for no corners but call for lines and corners of the old surveys, 12 and 13 have their own corners on the ground.

Block 9 corners can all be found as placed and described by Mr. Ammerman, but unfortunately are irregular both in course and distance, three corners are rarely found in line and in this rough north west corner of the Block the errors are serious.

Block 320 calls for no corners of its own. It begins on Survey 4 Block 10 and calls for the west line of 10 and the south line of 11. Block 321 put in at the same time by the same surveyor, Mr. Thompson, calls to begin on Block 320 and connects with its south line, and has two well defined and easily identified original corners, the S W 17, a marked rock in a mound and two bearings, one a rocky point of bluff and the other a lone tree, both easily recognized from the corner. N W 13 has two bearings and calls for a spring which bursts out under the rim rock, there the bearings fit, but it will not close with S W 17 by 54 varas northing and 29 in easting.

counter 46218

The S W corner of 13 calls for 3 large stones and a live oak and a cedar bearing. The three stones were found in a flat no other rock nearby, the cedar bearing is there and the live oak is dead and lying on the ground blown over, but this corner is over 240 varas south and 5877 east of the S W 17.

In Block 321 there are two pairs of old surveys, 517 & 518, 519 & 520. The original N.E. cor 517 with its cedar bearing was found, and the N.W. cor 519 with its bearing, but neither of them in the relative position given them in the field notes of Blk 321.

Block 246 T. & S.L. has no corners.

We seem to have, in the field notes, a definite marked line for the sbl Blk 11, for which line Blk 320 and Blk 344 call.

We have one old corner N.W. 29 in Blk 344.

We have the original S.W. cor 22 L. Mallet, and the Maybry corners of the H. & T.C. Blks 1 & 2.

We have in W.J.G. 6, the marked corners of 341, Jordan, and the N.W. & N.E. 74 Blk 9.

We have certain marked original corners on W.J.G. 10, sur 2, 17, 16, 13, 12 and certain old corners by which the surveys in this Blk can be adjusted.

We have two original corners in Blk 321 and the old corners of 517 & 519 and the corners in Blk 9.

As the unmarked surveys start from these various corners and run course and distance it would seem advisable to connect these corners on the ground in order to properly locate the intermediate surveys, and discover any irregularities, conflicts or excesses.

This was done and the method and results given below.

History of the survey.

In a former survey, as reported, we had run from the S.W. cor sur 23 Blk 11 to the N.E. cor sur 383 and found it to be 1402 varas north, and 1079 varas east of N.E. 383.

From N.E. 383 we had run S 27° E 1900 vrs and put in N.E. 384, on 1900 varas and put in S.E. 384. Thence we had run S 12° E and at 682 vrs put in N.W. 648, on 1900, 2582 in all and put in S.E. 647. We then turned S 78° W ran 1304 and put in S.W. 647. Thence S 12° E 170 vrs, and S 78° W 1900 varas and put in S.W. cor of 472. On S 78° W at 185 vrs put in N.E. cor 744, on 1900 put in S.W. 471 and connected this with the creek call, with an old rock mound supposed to be the original N.E. 471, and with N.E. 1 M. Tarin by way of Mabrys N.W. 8 H. & T.C. Blk 1. All which was duly reported and filed with the report of the McCutcheon survey.

On this survey we returned to our S.W. cor sur 471, and ran S 12° E 519 varas and set cor for 744. Thence ran S 78° W 1165 varas. Here we marked the N.W. cor 744, at the foot of a bluff and took bearings. We ran on 179 varas and searched for the S.W. cor 333, in a flat near a creek, but found nothing. We noted a recent rock mound built round a standing rock, 6 vrs E and 54 vrs S of our N.W. 744.

From our N.W. 744 we ran south 685 vrs and marked the S.W. cor sur 744, on south 1665 varas from S.W. 744 we reached a point 14 vrs east of a rock mound round a fence post, with an old fence post ten steps north.

From this mound at fence corner we ran west 874 varas and south 461 varas to a pile of rock under a fence, thence west 1029 varas to a small pile of rock from which a rock bluff and Mitre Pk. stood as called for in Maybry's field notes 106 vrs east of his S.W. 7, H. & T.C. This identified the mound at the corner post as Maybry's S.E. 7, "set ten varas south of a fence" on north line sur 22 L. Mallett.

From this S.E. 7 we ran South 1900 varas and looked for N.E. 6, but did not find it.

Then turned east and ran 1202 varas to the west bank of a dry creek or arroyo. From this point the creek ran nearly north, but it ran from the S.E. to this point. The bed was gravel and rock, some 66 vrs wide. The east bank rocky, it could not move. The west bank dirt about 5' straight up from the bed, and showing some signs of erosion. About 3 vrs north lay three rocks on the brink apparently part of a mound that had washed off, and some 17 vrs south of this a rock mound under a fence. We figured that the west bank had been cut back some 5 vrs in time past and fixed the approximate location of the original corner as 1207 varas east from N.E. 6 H. & T.C. and set a witness mound on the south line of 22, ten varas west of this 1207 vara point, and took bearings.

This would place the S.W. cor Mallett 22 in the present creek bed, nearly north of the rock mound under the fence and 10 vrs east of our witness mound.

From this point we ran north 1900 varas and reached a point some 5 varas S.E. from a large boulder or ledge, the extreme south point of a narrow ridge

running from the north. Here we made the N.E. cor sur 22. Some 25 varas north on the ridge was another point or ledge, and another still farther on.

From the extreme south point of the ridge we ran N 69° E 147 varas and set a small mnd, from which a recent rock mound bore N 10° E 16 varas. No old mound was found. The call at this corner seemed indefinite. The east line of the survey could not go east of the creek at the S.E. corner, and to run to the point 147 vrs N.E. of the rocky point would break the calls for both Course and distance from the S.E. corner. We returned to the S.E. cor 7 H. & T.C. and ran east 1207 and reached the mound we had put up for N.E. 22, S 45° E 4.5 vrs from an X we cut on the boulder.

Returning again to S.E.7, we set a mound (1807- 948) 255 vars east for S. W.cor sur 345. Returned to S.W.744 and ran 241 varas east for a corner of 744 and (1900 -1665) 241 varas north for N.W.345. and checked across the valley back to our N.W.744 at the foot of the bluff.

We now returned to our S.E. cor 22 and ran South 950 varas and set mon for middle corner on west line of survey 366.

Thence we ran east, at 950 made md, on 1900 set middle corner on next east line sur 366. Returning to the md set 950 west, we ran south 950 varas and reached the middle point on the south line of 366, from which a rock md at fence cor is 35 yrs south and 35 yrs west.

This mound at the fence corner had been set by Mr. Merrill for the N.E. 1/4 and N.W. 1/4 W.J.G. 6 and the division line between Mr. Mulhern and Mr. Kokernot.

On looking at the Co. Map we noted that although Sur 1307 and sur 5 call for the east line of the H. & T. C. Block, a strip had been placed between the H. & T. C. Blk and these surveys.

I also noted that Mr. Thompson's field notes for 23 Blk 344, place the N.E. cor of 6 W.J.G. 6, 950 varas east of S.E. 366. This position of these surveys as given by Mr. Thompson and Mr. Merrill seems to have been followed on the Co. Map. and I so traced them on my sketch, subject to correction.

The line between sur 5 and sur 6 is so rough and broken that no fence could be built on it or near it, and a great part of the country can not be used for grazing as it is inaccessible to stock. The owners had settled on a division of their own controlling the use of the land to suit their mutual convenience, so that it was not necessary to run this line between 5 & 6.

We therefore started to connect our point on the middle of the south line of 366 with the corners of 341 Jordan and the corners on north line of Block 9.

We turned S 43°30'W and ran 3176 varas, or 2304 south and 2186 west. The S.E. cor 6 H. & T.C. is 461 varas south of the Mallet line, so the point we reached should be 68⁷ varas North of S.E. 2 H. & T.C. The S.E. cor 6 is, by our measurement, 1207 vrs west of S.E. 2, hence our point should be 29 vrs west of S.E. 2.

This S.E.cor 2 calls for a rock and with X on a boulder N 37°15'W and two Mt.bearings. I hunted for this corner but did not find it, although the place we had reached fits the description given. It is on the gravelly east slope of a low ridge, and 6 large boulders are lying on the slope quite close by, and a sharp rocky Peak is seen S.E.

We ran from this point South 938 varas and placed a small mound which we will call "A" for convenience of reference.

We then went to a rock mound S.E. of Mulbrn's house shown us as the S.E. corner of sur 6 Blk 2 H. & T.C. I did not have Mabry's bearings with me at the time and could not identify the corner.

From this mound we ran North 673 and east 388 varas and found the N.W. cor of 341, a large flat rock in the valley, from which the cor of Mulherns house and Jordans house stood as called for by Mr. Thompson. I ran 950 varas east and reached a point near an old fence post from which a rocky peak bears as called for at N.E. 341, but the Hackberrys were gone. I then ran North 311 and east 392 back to "A".

According to field notes of sur 1 W.J.G.C, this N.E. cor 341 should be 640 vrs west of S.E. 2 H.&T.C. We find it only (398 & 39) 421 west. Which would move the N.E. cor sur 1 219 varas east of where our run to S.E. 2 from S.E. 6 H. & T.C. would place it. Perhaps this is due to Mabry's resurvey having moved the H. & T.C. surveys in 1889, west of where Thompsons calls and Glenn's calls in 1881 and 1883 placed them. Mabry S.E. Cor. N 1/4 & S.W. Cor. 2 Bk 1 is 202 W. of N.E. Cor. 6 Bk 1

County 46320

Keen with Jeff Davis called on 10⁶

The next marked corner called for in Blk W.J.G. 6 as an initial point, is the S.W. cor sur 7, which calls to be 455 varas S 63° W from the N.E. cor sur 73 Blk 9 G.H. & S.A. Ry. Co. *no such call in the original or file in S.L.O. Sur 8-4134 -*

The N.W. cor 2 Blk W.J.G. 10 by the same surveyor, is the N.E. cor sur 74 Blk 9, and as his fieldnotes and footsteps show Mr. Glenn was on the ground and surveyed WJG 10, and marked the bearings for N E 74, we can presume he knew where N W 74 as he calls for it and for N W 73 on sbl 8 WJG 6, so we started to connect our point A with N W 74. Everyone said it was impossible to get up or down the bluff of rimrock along north line of Block 9. So we went around to the N W 74. I had been to the $1\frac{1}{2}$ mile corner on west line of 74, near Mr. Henderson's Ranchhouse. We went there and identified the mound by the north bearing tree. Ran N 27° E 944 varas and found an old rock mound from which the column of rocks stood as called for and the root of the wild china (tree lying on the ground) is the correct course and distance. Thence we ran S 63° W 455 varas and marked the S W corner of Survey 7 WJG 6 on S 63° W at 1900 varas reach an old mound N W 73 both mountain bearings OK. stump of old cedar in place (tree gone) on S 63° W 1083 varas marked corner for S W 8 WJG 6, and took bearings. Mr. Henderson went with us and showed us a trail where we could ride up the ~~mx~~ impassable bluff and we returned to A and ran a traverse to a point on the bluff N 26° W from N W 73, there we set a flag and Mr. Henderson found a place where we could make a trail down to the valley below, and we continued our line to the mound set for the S W 7, finding it 4496 varas south and 1958 varas east of our point on the south line of 366. I mentioned the matter of climbing the bluff to show that as no one knew of these pass ways it is very unlikely that a connecting line from across the bluff was ever run directly run to the corners in the valley. Three miles east is a wide gap or valley through which the road runs.

The above run showed that the S W corner of 7 was 205 varas west and 160 varas south of a point by course and distance from our point for N E 5 or 166 varas west and 42 varas south of course and distance from N E 341 and the question arises whether the S E corner of 7 should be put 1844 varas east of south west corner or at point where the line from the north would intersect the Block 9 line 2170 varas from S W 7 Block 9, necessitates moving survey 3 west out of conflict with 8, which I have down in sketch.

From N E 74 we ran N 63° E 1890 varas and reached a rock mound with two live oaks standing as called for at N W 2 Block WJG 10. From N W 2 we ran N 63° E at 1574 varas put in corner for SE 4 on 1900 varas marked N E 2 and turned S 27° E to a point on hill from which we could locate original S E 2 checked closely on course. From N E 2 ran N 63° E 3800 varas, as N E 17 would be on top of bluff, and reached a point 90 varas north and 70 varas west of a small old rock mound from which a live oak stump about three feet in diameter bears S $84\frac{1}{4}^{\circ}$ E 662 varas, the old forked trunk lies rotting beside the stump. I was at this corner some years ago and the tree was then blown down but was not rotten and the X was plainly marked in the bark. The size of the forked tree in that part of the country would identify it beyond question. There is no other live oak of that size for miles. This corner is, in my judgement, unquestionably the original ~~corner~~ N W 15 Block WJG 10, but does not fit the original N W 2 by 90 varas in northing and 70 varas in easting. From this N W 15 we ran N 63° E part way up the west slope of a mountain and set a mound for the N E 15, and took bearings we ran on N 63° E to the top of ridge and took bearings of prominent peaks for topographic notes.

Returning to our N E 15 we ran N 27° W with the valley and at 1900 varas reached a point 44 varas S 27° E and 73 varas N 63° E, from a large old rock mound on a hill as described at N W 13 WJG 10, with one mountain bearing which fits fairly well. To identify this mound we went to a small rock mound in valley shown us as the N W 359 a well known corner near the headquarters ranch.

The old ~~monument~~ oak is still standing and is plainly marked, but it required a change of $1^{\circ}15'R$. to get the course, but later we ran diagonally across 415, 2688 varas and found an old rock mound on top of a hill above valley on south side, and three cedars corresponding closely with the calls for bearings and the line ran within three varas of the variation we were using ($11^{\circ}45'E$). From the big oak corner N W 359 we ran back to the big rock mound on the hill and found it 1042 varas south and 1767 varas east. The call by WJG 10 fieldnotes is south 936.4 varas and east 1950 varas.

To further identify this N.W. 13, we returned to the big rock mound and ran N 63° E at 1708 varas reached top of rocky ridge at 1918 varas reached a rock mound on foot of east slope of ridge from which a large cedar marked X (old) stands S 63° W 40 varas. on N 63° E 1908 varas found large flat rock marked X (old) lying on the ground, some rocks around base. This apparently fixes the original north line of 12 and 13, Block WJG 10. From this point (N.E. 12) we ran south through a gap and along the steep slope on west side of Polks Peak, and found the Ammerman N.W. corner of 224 on the S.W. slope of Polks Peak 1700 varas South 27° E and 97 varas S 63° W from N.E. 12.

The mountain bearings fit the calls, the location is on the S.W. slope as called for and the "house top" Ammerman mark is plainly out in an immovable boulder as called for and the old marked rock is in the corner. But this corner will not fit any thing else.

From it we ran N 63° E 1900 varas over very steep ~~slope~~ south slope of the peak. and at the 1900 varas made a rock mound, from which a rock mound said to have been set by Ivan Moss is S 65° E 28 varas this was put in from the south.

Here we turned S 27° W and ran 1832 varas and found corner near N.W. side of a canyon 23 varas to the left, marked rock, boulder in place cedar bearing ~~is~~ OK., live oak doubtful.

On ~~XXXXXX~~ 27° W from this N.E. 221 we ran S 27° 45' E and at 1672 varas reached a rock mound, Ammermans N.W. 220, Mt. bearings and one cedar O.K.

On S 27° 45' E crossing a deep wide canyon which is impassable except by riding a mile or more east and heading it, and so wide that it required a triangle to measure the distance. At 3824 varas we turned S 63° W and running off the bluff into the valley, at 1901 vrs reached a rock mound under a fence, from which St. Patricks Peak and the North one of the Twin Sisters bear as called for in Ammermans fieldnotes for S.W. 217.

This fence runs from the bluff S 63° W over the E.W. cor 16 and on over the N.W. cor sur 215 and beyond, and is straight and true to the course called for between these corners.

We returned to the Polk's Peak corner, N.W. 224 and ran S 18° W, diagonally across sur 223, 2688 varas and found Ammermans N.W. cor 222, 40 varas S 27° E and 49 varas N 63° E. This mound was old, and was in a smooth flat in the midst of rocky hills and ridges and the bearings fit the field note calls.

From this N.W. 222, we ran S 27° E 1900 varas and reached a point from which a cedar post in a rock mound was 7 varas to our left, from which post the bearings fit the calls for S.W. 222. We ran on S 27° E and at 3772 varas reached a point under the fence 14 varas S 63° W from a small rock mound from which two Peaks fit the calls for N.W. 215. This mound was under the fence above described as crossing the valley between the two section corners.

From this N.W. 215 we ran S 27° E 3605 vrs and found a rock mound on the east slope of a hill, one rock marked N.E. 151 (old) and another rock with the same marks recently made.

From this corner we ran N 63° E 941 varas, and set a mound at 950, and ran a traverse down the valley to the N.W. cor sur 208, finding the old mound with the marked rock on the south side of the creek. The mound was almost entirely covered with drift. The windmill used as a bearing had been moved, but the hole where it had stood was still there on the N.W. side of the creek, and this fits course and distance to the rock mound, and the Mt. bearings fit Ammermans calls at N.W. cor sur 208. This traverse checked out 3822 S. & 3816 N. 63° E from N.E. 151.

From this N.W. 208 we ran diagonally across the survey reaching a point in the borrow pit on south side of the Orient R.R. Thence we ran N 65° E 300 varas to a point in a Johnson grass field for the S.W. cor sur 1 Blk 10, but did not find the rock mound formerly marking the corner. I had been to this corner three times, and had connected it with N.E. 1 and with corners east along the Orient, in cross sectioning the Mt. of Way, and recalled distinctly its position relative to the south and west fences which are close at hand, and believe we were very close to its true position.

The object of this run was to connect the east line of Blk 9 with the west line of Blk 10, so that the identification of N.W. 208, together with Ammerman and Greenes calls at S.E. 208 was sufficient for our purpose.

We now returned to the N.E. cor 12 W.J.G. 10 and ran N 70° E, 701 varas to an old rock mound, one rock marked "B" (old) on south side of a road near a gate.

From this rock mound the two Thompson bearings called for at S.W. cor sur 17 Blk 321 were easily recognized and fit the calls in his field notes at a variation of 11° 45' E.

We figured from the Thompson field notes for surveys in Blk 321, that the original corner at N.E. 517 should be 797 varas north and 5570 east of his S.E. 17, so we ran from S.E. 17, N 51° 51' E 5685 varas, but on reaching this point we found no corner, no hill and no cedar tree close by, but we found an old

at the west foot of a rocky knoll, 143 varas east and 298 vrs south, and N56°E 23 vrs from it a large cedar stood on the hill. We found no other rock mound and there was no other hill near by, and although there were several cedars on the hill, the large cedar was the more westerly and would naturally be used as a bearing for a corner on the west. Mr. Kokernot told me this mound had been pointed out by Mr. Merrill as the original N.E. cor sur 517.

In running from S.W. 17 the direct line east would run over a very difficult country. In running our course N 81°51'E we would have passed over some very steep slopes, so at 3293 vrs we diverged 16° to the right, to run through a gap in the hills, and returned to our course at 4575 varas. When we found the above noted difference between our run and Thompsons calls, we returned to the slope at a point where we could see our line and it checked true to course.

I do not think any difference in variation would account for the error, as our variation fit the bearing calls at the S.W. cor of 17, and wherever I have followed Mr. Thompsons work I almost invariably found his course running to the left of normal.

Mr. Thompson calls for 3 large rocks and bearings at his S.W. 13, and his field notes show that this corner should be 797 vrs south and 130 east of the N.E. cor 517.

We ran south 808 varas and east 164 varas from N.E. 517 and found 3 large rocks in a flat with no surface rock in the neighborhood, and a cedar standing as called for and a 14" Live oak blown down at the course and distance called for.

This S.E. 13 was intended, I presume to be 3 miles east of S.W. 17, but we find it (5713 & 164) 5877 east and 308 south of S.W. 17. 2897?

We then ran south and found a rock mound in a flat 5895 vrs south of S.W. 17, or 6394 south and 374 east of N.E. 517. There was a large cedar standing N 2°10'W 267 vrs from this rock mound, the call is N 1°30'E 267. This cedar has been blocked into and all signs of old marks destroyed. East and a little south we found a small cedar stump, but so small that it would not be chosen as a bearing with the large tree standing so near. We accepted this rock mound as probably the original N.W. cor 519., and it stands 2950 varas N 63°E from a point 94 varas S 27°45'E from the Ammerman N.E. cor 220 Blk 9.

Block 321 calls to begin on sur 11 Blk 320 (same surveyor) and 320 calls to begin on Blk 19 and calls to follow the west line of Blk 10.

In order to locate these points relative to S.W. 17 Blk 321, we returned to our point N 81°51'E 2625 varas from S.W. 17, and ran a traverse N.E. to the N.W. cor sur 37 Blk 10, at Indian Spring.

The route was chosen as running through a reasonably smooth country and passing through a gap where we could get off the rim rock.

At 15810 varas east and 5617 varas north of S.W. 17, we found a rock mound at a fence corner, one rock marked "N.W. 37" and two good bearings. The Gap in a mountain is a narrow slit between two perpendicular bluffs which would close up or widen out if you moved far from the corner. We found the course to these bearings to be 33' to the right of our transit course from S.W. 17.

We now moved to the S.W. corner sur 14 Block 11 and ran south and west to the N.W. cor sur 13 and on to S.W. 17 Blk 321. We could not start further west as the course south would there cross a number of deep ravines and high ridges and the south bluff would probably be impassable. The course selected from S.W. 14 was up a gradual slope and down over some low hills to the valley, an easy grade and fairly direct course.

We were shown the S.W. cor 14, a rock mound under a fence in Runey Canyon, from which the two peaks fit the Greene calls for bearings at his S.W. 14.

We had gone round east and north from Indian Spring to reach this point and as we approached this S.W. 14 I could see that it approximatel fit the points recognized on lines run in Blk 11 on the McCutcheon survey.

Details of this traverse and of the others are attached to this report, and they show that at a point 9723 varas south and 2666 varas west of S.W. 14 Blk 11 we reached a rock mound at N.W. 13 Blk 321. Mr Thompson here calls for a spring "Ojo Alto" S 45°30'E 408 varas. A spring near the rock mound found fits this call. It breaks out immediately below the rim rock, near the top of a high ridge, and its unusual location at once suggests the suitability of the name. The large cedar on top of the bluff fits the call for cedar bearing, so that this corner is especially well identified as the N.W. cor of sur 13, but instead of being some 400 varas north of the N.W. cor sur 517, it is on the ground 1229 varas north of a point S 23°W 677 varas from the N.W. cor sur 517.

From this N.W. cor sur 13 we ran to the S.W. cor sur 17 and found it to be only 3701 varas west and 1846 varas south of N.E. 13.

Apparently this N W corner 13 as a footstep of the original surveyor will fix the west line of surveys 13 and 14. But the corner described as S E 13, although given in the fieldnotes cannot, I think, be held to control as it evidently has slipped into the corrected fieldnotes of 13 by mistake. The original ~~survey~~ survey was probably run 3 miles east from S W 17, Mr. Thompson supposed that 517 was down on the east line of Block 9, where its fieldnotes place it (see call for S W corner) and when he found the corner of 517 up in his survey 13, he corrected 13 out of conflict with 517 and 518 senior surveys.

The call on the EBL 13 corrected shows that he stopped the east line of 13, 742 varas north of his original S W corner 13 as located east of S W 17 and abandoned his original corner for S W 13.

If I am right in this, then this leaves no marks in fieldnotes calls for east line 13 and we have to have recourse to course and distance. 321 begins on 11 Block 320, or north from N W corner of 4 in Block 10. The bearings at Thompsons S W 17 and N W 13 give his course $11^{\circ}45'$, hence the east line of 321 and west line of 11, 321 will be north of N W 4 at $11^{\circ}45'$.

Figuring this from connection with Block 10 above noted and giving each tier of surveys its call of 1900 West, we reach a point for the west line of 12 and the east line of 13, which is 2535 varas EAST of original N W corner of 13. We cannot move the N W 13, and there seems to be no warrant in the fieldnotes for putting over 1900 varas in surveys 12-9 and 2 to west line 11. Hence it would seem that the excess distance in westing will belong in Survey 13, between its east line fixed by C & D from initial call and its own N W corner.

This will also apply to sur 14 as the N.W.13 is also the S.W.14.

The north line of 13, 16, 17, 12, 9, & 2 is fixed by the N.W.13, and the South line by S.W.17, which run on east will strike the west line of survey 11 Blk 320 54 varas north of its S.W. corner.

The north line of sur ~~13~~ 1, 10, 11, 14 & 15 will be the south line of Blk 320 and 1900 varas north of N.W.13.

The surveys south and west of 517 in Blk 321, will be located by their field note calls subject to the lines and corners of adjacent senior surveys, and we have so sketched them west to Blk 9 and south along the east line of Blk 9, giving actual distances as found by points reached on this survey.

Surveys in Blk 321 call for no marked corners of their own, but call to start on sur 4 Blk 10 and run north, and run east to the west Blk line of 10.

If the call for Blk 10 holds, the excess will be on the east line of Blk 320 and will depend on the difference in the course of the lines in the two Blks.

This difference was figured as 1° up to N.W. cor 37 where the reading on the bearings gives a difference of $33'$.

Starting Blk 320 at N.W.4 Blk 10 and running north we find an excess in northing ~~which~~ up to the south line of Blk 11, which excess has been put into the surveys on the north tier of 320 and 344. The course of the south line of Blk 11 being taken from the course of lines in Blk 11 run on the McCutcheon survey.

Taking the meridian line north from N.W.4 Blk 10 and running west from this we encounter the excess westing found in Blk 321. Both these Blocks were surveyed by the same surveyor at the same time, and call for each other.

Hence it would seem proper to run a meridian north from N.W.13 through Block 320 to Blk 11. But there is another factor to be considered namely the connection of Blk 321 on the west with Blk 344.

There is no question, I think but that a meridian run north from the well identified S.W. corner of sur 17 in Blk 231 will be the true west line of surveys 17, 18, 19, in Blk 321, sur 4 in Blk 344, and of sur 45 & 46 in Blk 320.

If we reverse the calls and run east from this meridian 1900 vrs for sur 45 & 46, and on 1900 further east for surveys 41, 42, 43, & 44, each survey will have its full complement of land and the connections with Blk 344, and through it with sur 383 and 23 Blk 11 will be maintained as shown in map and field notes, although it will break the connection between 320 and 321 at N.W.14, which has been shown to be itself 100 varas in error as fixed by its own corner. The surveys in Blk 320 have been so platted on sketch.

This will throw the excess through blks 320 and 321 up to south line of Blk 11, through surveys 13, 14, Blk 321 and surveys 37, 38, 39, and 40, in Blk 320.

and we note that a similar wide tier of surveys has been placed running north through Blk 11, practically an extension of this same excess found in 320 and 321.

The line north from S.W.17 fixes the relative position of the three Blocks 321, 320, and 344. On extending the lines of 344 west from this connection we find that it places the M.K. & T.E. surveys 27, 28, & 29 in practically the same position relative to Sur 23 Blk 11 and N.E. cor sur 383, as that given by Mr.

Thompson in his original field notes for these surveys. We know that Mr. Thompson was familiar with the actual location on the ground of the corner in Wild Rose flat because he gives bearings not in the original field notes of 383, and we know he was familiar with the N.W. cor sur 22 Blk 11, which is a well known corner near B.B. McCutcheons house and it is almost incredible that he should have made an error of 544 varas in easting of these surveys, as Mr. Merrills corrections would imply.

I note that the east line of Blk 320 and west line of Blk 10 run from the S.W. cor sur 1 Blk 10, with an allowance of 1° difference in variation, up to N.E. cor 8 Blk 320, then west to S.W. 17 and south and east along Blk 9 to S.E. 208 and S.W. 1 Blk 10 will not close in easting, but the error is probably between S.W. 1 and N.W. 33 Blk 9, as Greenes west line of Blk 10 is not continuous. This would only affect the amount of excess in easting to be thrown into Blk 320, and we propose to check on this later by running from N.W. 519 to NE 519 and on to N.W. 31 Blk 10.

The actual location of lines and corners of the older surveys in Blk 321 and on east line Blk 9, and the actual measured distances between these points is so different from what is shown on the maps and working sketches, that in certain instances I did not attempt to locate the lines, as notably the division line between surveys 6 & 7, I have given the actual course and distance round the two surveys, but the division made in their corrected field notes fails to satisfy the actual conditions on the ground, and as the corrected field notes were a compromise and based on erroneous survey, it seems as though a readjustment would have to be made.

I think our survey of 320 and 321 reached all the actually marked corners on the ground, except the N.E. 519, which did not seem material, but we needed a connection from the west to determine the relative position of the surveys in 344.

We therefore returned to our line from N.E. 383, above described and starting at the S.E. cor we had set for survey 647, we ran a traverse to the N.W. corner of sur 359. We selected a route over reasonably smooth country, where courses could be held for some distance, running nearly east along a broad valley or draw, and then turning south where we could cross through a wide gap in the mountains and have fairly easy grades down to the valley in which the N.W. cor 359 is located.

The details of this traverse are attached to this report, the result shows that the N.W. cor sur 359 is 11302 vrs south and 6652 east of N.E. cor 383, by our measurement.

We had already, as related above, run from the N.W. cor 359 to N.W. 13 and on to N.E. 12 and on to S.W. 17 Blk 321, finding it to be 869 varas north and 5830 varas east of N.W. 359.

Comparing these distances with those given in Mr. Merrills sketch we find N.E. 383 to N.W. 359 by our run to be South 11302 vrs and East 6652 vrs by Mr. Merrills sketch " 11251 " " 6920 "

N.W. 359 to S.W. 17 Blk 321 by our run North 869 vrs and East 5830 vrs by Mr. Merrills sketch " 841 " " 5875 "

As shown by survey of 17, 16, 15, 13 N.J.G. 10, the N.W. cor 359 is south and east of the position given in the field notes of Blk N.J.G. 10.

The S.W. cor of this upper part of Blk N.J.G. 10 is fixed by the N.W. cor of sur 2, and the west Blk line runs N 27° W 5700 varas from that corner.

The east line of this part of the Block, exclusive of surveys 9 & 10, is fixed by the N.E. cor of sur 12, and runs S 27° E 3836 varas from that corner.

The north line of this part of the Block will run from one of these points S 63° W to the other, but the surveys inside of these west north and east Blk lines must be adjusted to the lines and corners of the senior surveys as found on the ground. This we have done in the sketch accompanying this report.

Surveys 16, 17, 15 & 20 in Blk 344 call to run south to the north line of Blk N.J.G. 10, but on the ground will not reach it by some 60 varas, but I presume that the call will hold and the distances increased to reach the north line of N.J.G. 10 where it actually is on the ground.

Surveys 21, 22, 23, 24, 25, & 26 seem to have been corrected out of all possible connection with any known corners, judging from the position given them in Mr. Merrills sketch and in the working sketch from the Gen. Land Office dated 1-15-13 showing S. Mallet 22, and adjoining surveys and S.E. 2340, S.E. 18659 and S.E. 8350.

I note that this construction seems to be based on a connecting line from N.E. 22 to a corner on west line of N.J.G. 10. There is no such corner called for in any field notes I have seen.

Again I note that on this sketch sur 21 begins at S.W. 20, but seems to be based on a survey and sketch referred to in a note on survey 21. It can be located only by course and distance from S.W. 17, and its position relative to W.J. 10 can be based only on the relative position of N.W. 2 and N.E. 12 to S.W. 17, but the survey on which the sketch is based gives sur 20 its distance north and south and then cuts 21 down from 1732 north to 1130 for which there seems no reason whatever. 23 lies north of it and 23 is junior survey in the same block and can not stay it from going its distance north. But the sketch shows that it was not even run up to 23 but pulled back or cut off to put in a vacant strip.

The south line of 21 should run by its call 740 varas along the North line of W.J. 10, the sketch gives it 1435 varas.

21 calls to run west 983 varas to the east line of 346, the actual distance is 1274, but the sketch runs it 1154, beyond its original call, and then runs it north instead of south, and then puts in 500 varas more to the east line of 346, making in all a westing of 1650 from the S.W. cor sur 20 to east line 346, when the call is 982, and actual distance 1274, and then they put in another scrap.

I have carefully platted the actual distances to the surveys west of these Blk 344 surveys, and followed their field notes as far as possible and find they cover nearly all the land there is, and lie very nearly in the position their original field notes call for, and I can not find any room for the scraps, and they are based on such erroneous data, that it was impossible to place them on my sketch, so I have omitted them and will ask you to kindly instruct me where to put them if they exist at all.

On the west of the surveys depending on theallet corner, there is a strip as noted above, which probably was made by the location for the resurvey of the H. & T.C. lines, but these, with the exception of the Bird strip lying east of 346 were outside the limits of this survey.

I think this report will give you a clear idea of the methods we used and the facts we found on this survey. If these are correct as I believe them to be, then I think you will find practically all the facts to be discovered on the ground on which the location of the surveys involved depend, if so, I will ask you to kindly take the matter under investigation and instruct me as to the position to be given to these surveys as based on the facts. Then I can mark these lines and corners on the ground, return corrected field notes and when these are approved the owner of the lands will have fixed lines and actual corners on which he can rely, which is the main object of this survey.

All which is respectfully submitted

R. A. Dord

Licensed Land Surveyor

Alpine September 12 1921

Details of traverses run.

From S.W.17 Blk 321 to N.W.37 Blk 10

N 81° 51' E	5625	vrs
N 64° E	6928	"
N 68° 30' E	190	
S 75° E	215	
N 74° 40' E	663	
N 77° 40' E	450	
N 53° 40' E	364	
N 31° 50' E	555	
N 43° 20' E	190	
N 42° 20' E	495	
N 49° 10' E	987	
N 56° 10' E	348	
N 81° 55' E	230	

From S.W.14 Blk 11 to N.W.13 Blk 321

S 1° 30' E	1482	vrs
S 7° E	1012	"
S 17° W	682	
S 5° W	328	
S 20° W	326	
S 25° W	390	
S 29° W	425	
S 27° W	457	
S 17° W	1617	
S 23° 30' W	3505	
S 33° 30' W	73	N.W.13

S 64° 30' W	3933	
S 46° W	223	S.W.17

From N.E.383 to N.W.359

S 27° E	3800	
S 12° E	2582	
S 12° E	12	
N 39° 30' E	131	
N 73° 30' E	73	
N 80° E	3580	
SN 22° 30' E	1365	
SN 9° 15' W	2336	
S 13° E	2283	
S 7° 30' E	335	

From middle point sbl 366 to S.W.7 W.J.G.10

S 43° 30' W	3176	
South	938	"A" S 51° 30' W 502 to N.E.341
S 60° 45' E	574	
S 76° 15' E	360	
S 82° 30' E	245	
S 72° 15' E	928	
S 53° E	84	
S 50° E	370	
S 57° E	70	
S 74° 30' E	44	Bluff
S 82° E	1742	to S.W.7.

Sketch Files
Jeff Davis Co.
Report of Progress by
R.S. Dod -

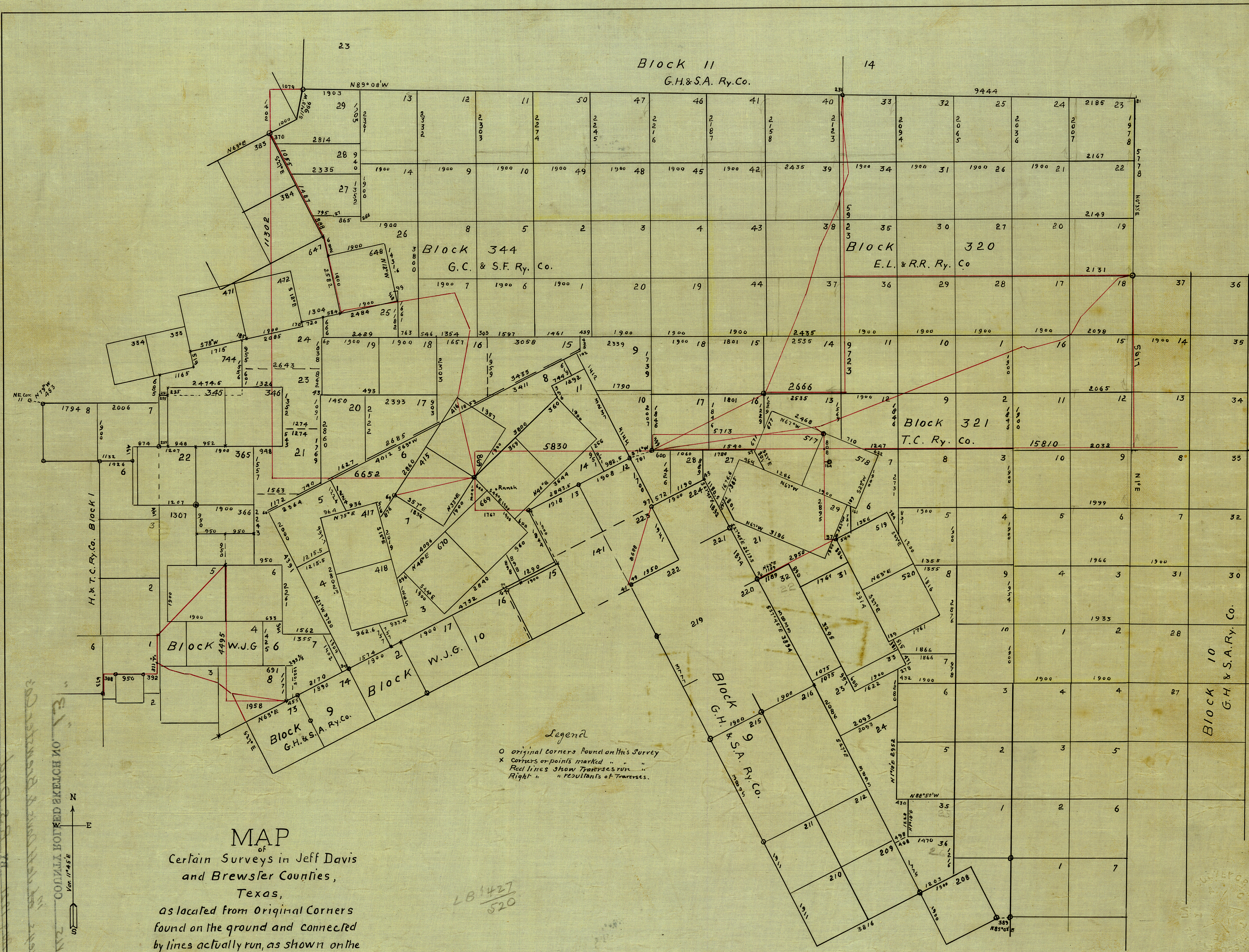
Filed Sept. 16th 1921
J.T. Robinson, Comm.
A.C. Clark
clk.

<See Plot filed with this>

Keep With
Jeff Davis COUNTY ROLLED SKETCH NO. "13"
Report of Progress

SURVEYED July 8 Aug 1921 BY R.S. Dod

FILED Sept 16, 1921
12-9-22
14.00



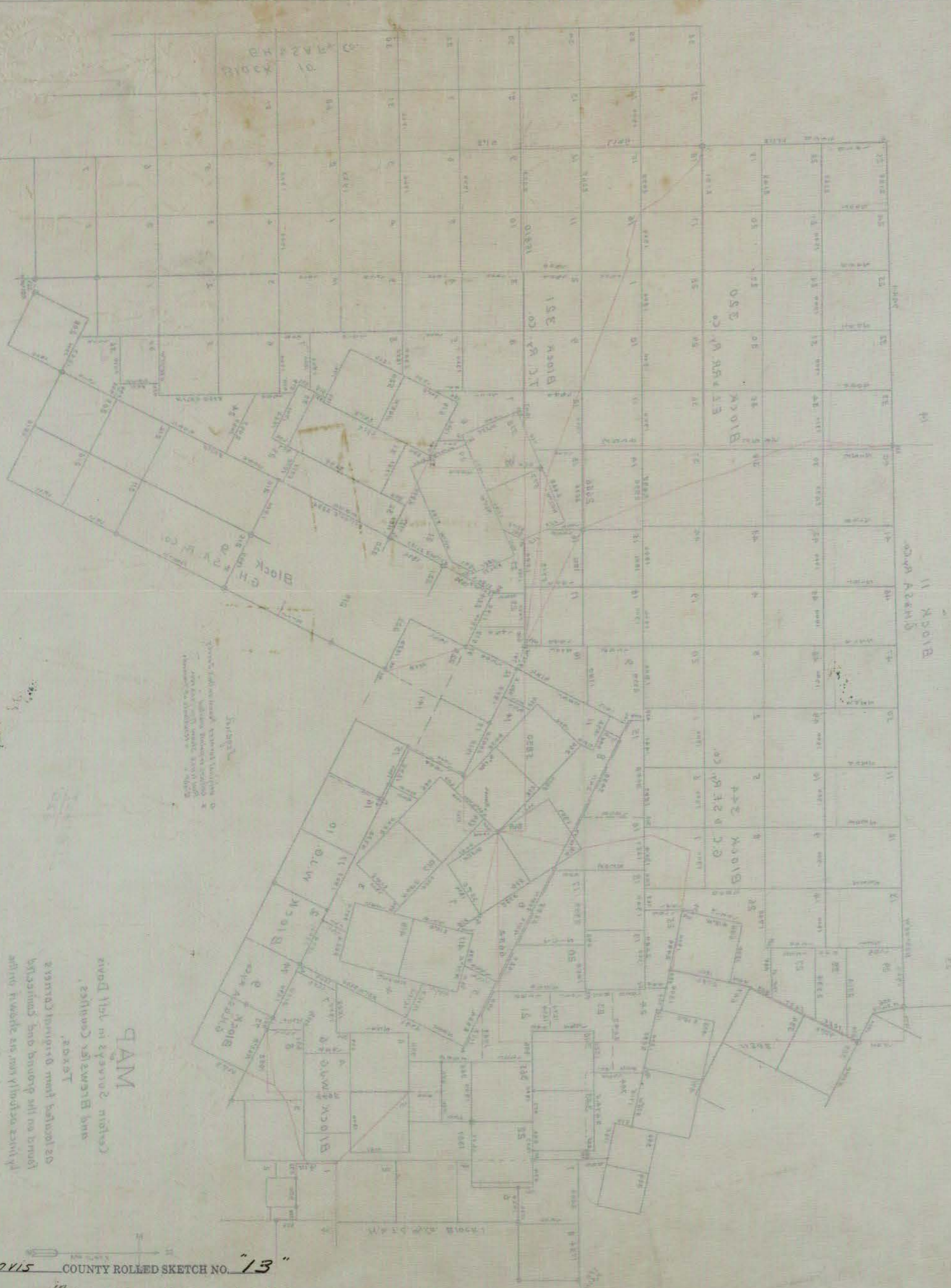
MAP
 of
 Certain Surveys in Jeff Davis
 and Brewster Counties,
 Texas,
 as located from Original Corners
 found on the ground and connected
 by lines actually run, as shown on the
 above Map.
 Made from actual Survey July & Aug. 1921
 by R.S. Dod.
 Licensed Land Sur.

Filed Sept. 16th 1921
 J.T. Robinson Com-
 S.C. Clerk
 c.k.

I, R.S. Dod, Licensed Land Surveyor of Texas, do hereby certify that
 the foregoing Map is true and correct and that all corners, lines, courses and
 distances are thereon shown as found by actual survey made by
 me, in the field, and according to law - in July & Aug. 1921
 R.S. Dod
 Licensed Land Sur.

See Sketch File No. 28.

Jeff Davis
County Roll Book No 13
Map of Survey at Jeff Davis & Brewster Co's
Surveyed July & Aug 1921 by R.S. Dod
Filed Sept 16, 1921



Jeff Davis COUNTY ROLLED SKETCH NO. "13"

Map of Survey at Jeff Davis & Brewster Co's.

SURVEYED July & Aug 1921 BY R.S. Dod

FILED Sept 16, 1921