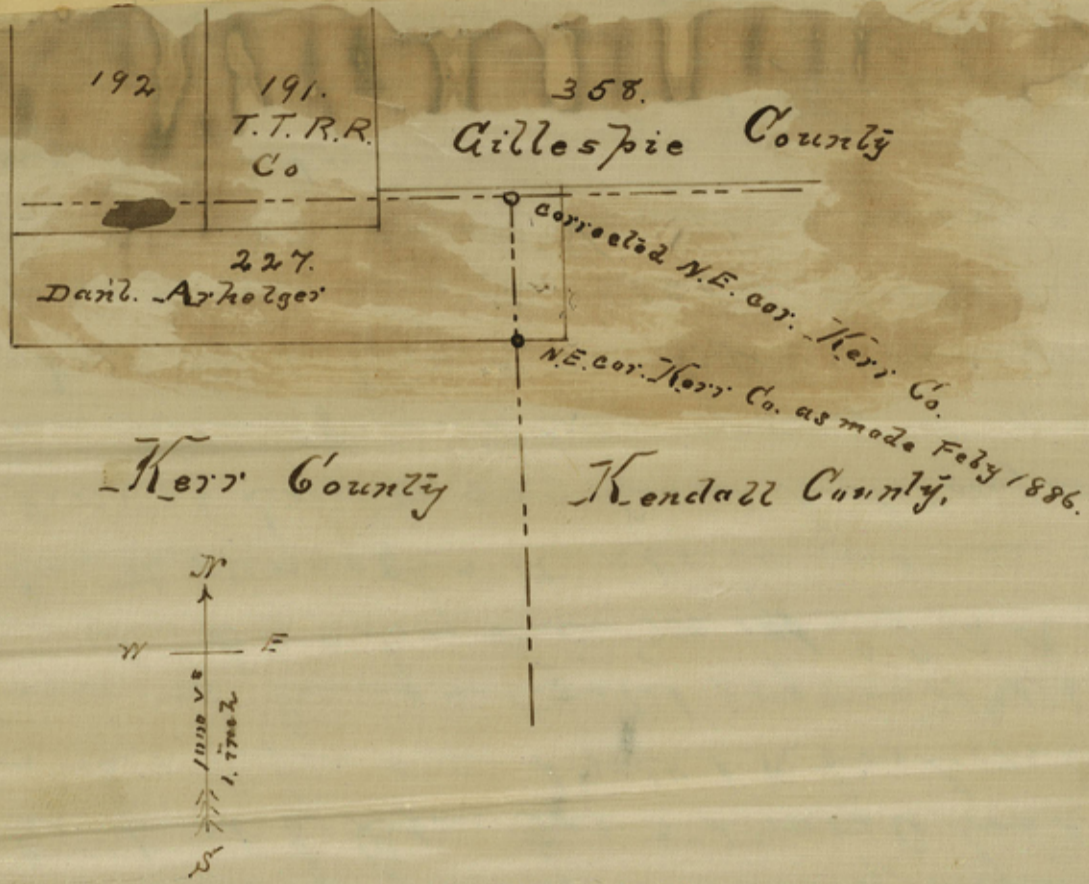


J. M. Hamilton
Collector Kerr Co. Treas.

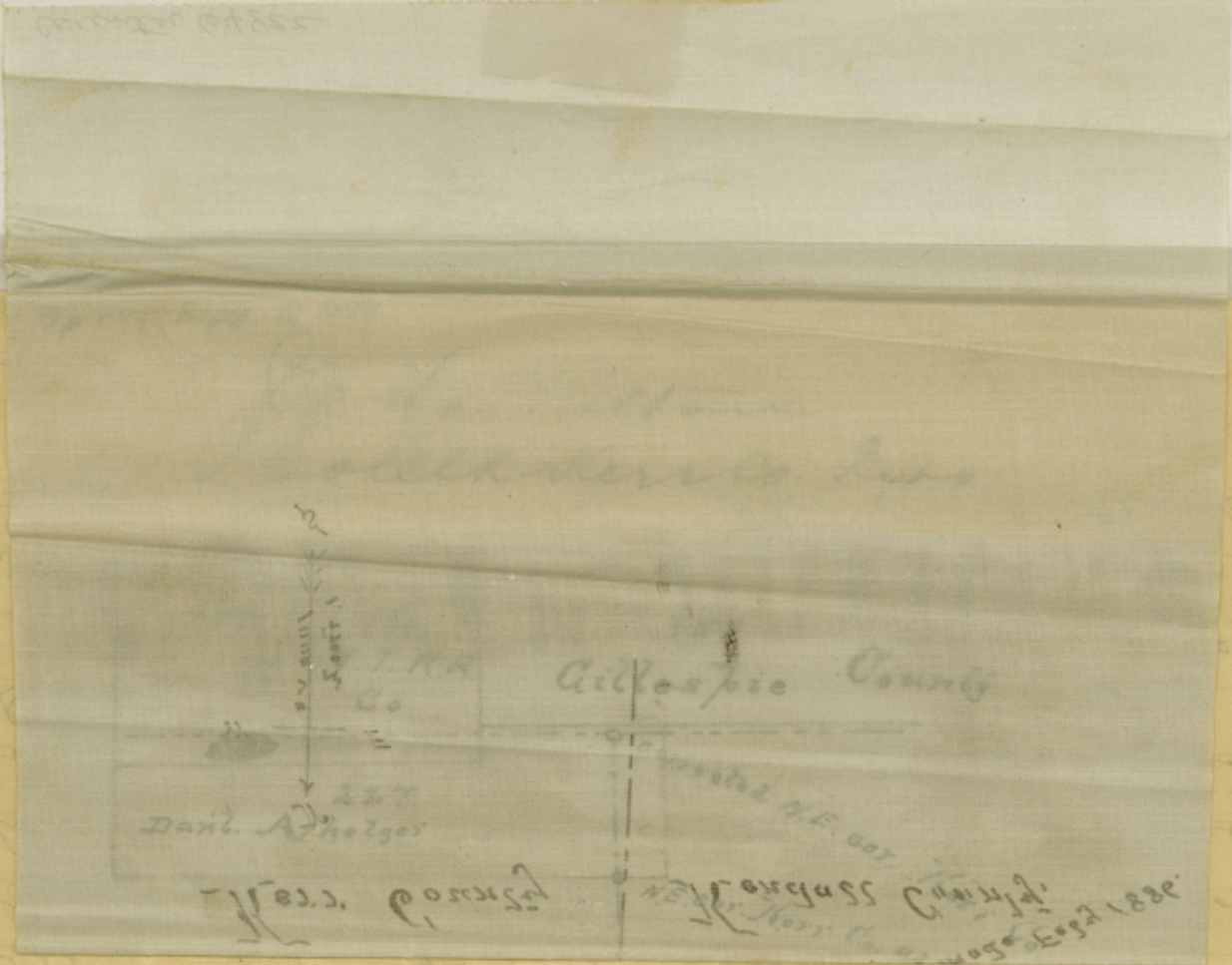
Kerr Co Bdry Line 6



The State of Texas, J. M. Hamilton, County
 Clerk of Kerr County, Texas, do hereby certify that the above and foregoing is a
 true and correct transcript, of the order,
 plat and field notes of the corrected N.E. cor of
 Kerr and N. W. Cor Kendall Counties, as approved
 by the Courts. Court of Kerr County on the 12th
 day of June 1896 as all which appear
 of record in my office.

Given under my hand and seal
 of office, this 23rd day of June 1896.
 J. M. Hamilton
 Collector Kerr Co. Treas.

Kerr Co. Bary Line 6



The State of Texas, J. M. Hamilton, County
 Clerk of Kerr County Texas,
 hereby certify that the above and foregoing is a
 true and correct transcript, of the order,
 plat and field notes of the corrected N.E. cor of
 Kerr and N. W. Cor Kendall Counties, as approved
 by the County Court of Kerr County on the 12th
 day of June 1896 as all which appear
 of record in my office.

Given under my hand and seal
 of office, this 23rd day of June 1896.
 J. M. Hamilton
 Clerk. Kerr Co. Texas.

Kerr & Kendall County line:

Ordered that the report of J. H. Davis, of the corrected N. E. corner of Kerr and N. W. corner of Kendall Counties, be approved, recorded and certified copy thereof forwarded to the General Land Office:

The State of Texas } To the Hon. Courts Court of
County of Kerr } Kerr Co.

In accordance with the order of your Court, given at its February term 1896, I proceeded on 1st day of June 1896 to the N. E. cor. of Kerr County and with me by a representation from Kendall Co., I also proceeded to establish the N. E. Cor of Kerr and the N. W. Cor of Kendall Counties, in accordance with the subjoined field notes.

J. H. Davis
Special Sur^r K. Co.

Field notes of the corrected N. E. cor of Kerr and N. W. cor of Kendall Counties, as established on 1st day of June 1896: Beginning at a stone md in the South line of Gillespie County, marked N. E. Cor K. Co., fr. wh. a Span. Oak 3" d. mkd G bro N 75 W $1\frac{3}{5}$ rods and a Cher. 5 in d mkd K bro S $17\frac{1}{2}$ E 19 rods said stone md. being situated 159 rods N and 694 rods E from the S. E. cor of Sur No. 191 J. T. R. R. Co. thence South at 729 rods to the stone md in the South line of Sur No. 227 Daul Arhelger, established in July 1886, as N. E. cor of Kerr and N. W. Cor of Kendall Counties, a complete description of which is given in the record of the line between Kerr & Kendall Counties, as run in 1886 by Davis & Grady.

Given under my hand this June 5th 1896.

Herman Herman } Chain
P. B. Love } Carriers

J. H. Davis
Spec. Sur^r Kerr Co. Tex

Filed June 9th 1896.

~~15~~

Kerr Co Bdry Line 6

Kerr & Kendall Co.

Fieldnotes of the corrected
N. E. corner of Kerr Co.

filed in the Genl. Land Office

June 26th 1896.

H. C. [Signature]
Chief Clerk.

Examined and found to be
correct. June 26/96

E. W. Pressler.