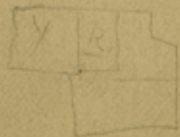


Kimble  
and Menard

N. line Kimble and S. line  
Menard approved 12/15/99  
Wise

Abstract corrected ac-  
cordingly 12/15/99

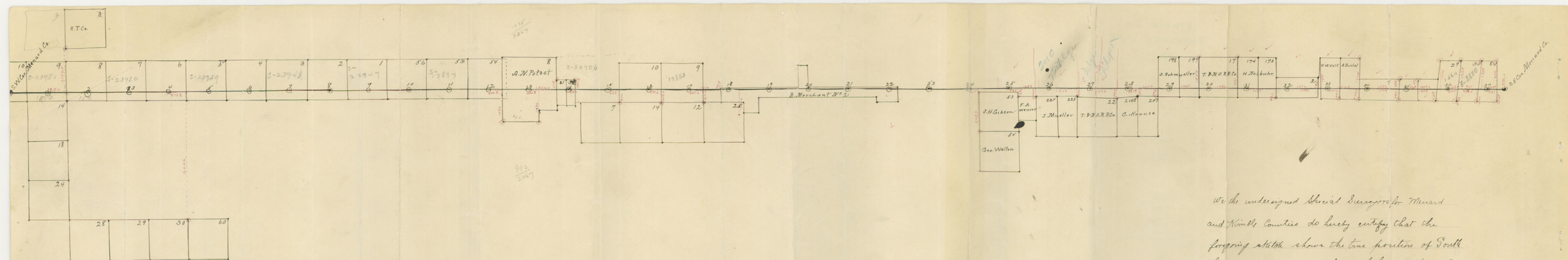


Kimble Co Bory Line 33

Calculation 7/9/90 - Walker.

c





We the undersigned Special Surveyors for Menard and Kimble Counties do hereby certify that the foregoing sketch shows the true position of South line of Menard Co. or the North line of Kimble Co. as run by J. D. Hurley and W. T. Hope in 1896. and we approve same. red figures circles and broken lines represent connections between mile ~~mark~~ monuments and corners of surveys authenticated by witness trees

W. T. Hope  
 Special Surveyor Kimble Co. Texas  
 D. W. Maddox Special Surveyor Menard Co. Texas

120  
 11



32

KIMBLE CO  
BOUNDARY LINE

~~7~~



2A-J-4 E 48-S-2 ALS DO IO IN PLS 2 38- 2-4 E 0A-J-2 ALS\*  
A BFB PLS 2 850 ALS 1800 ALS 2F-MQ MKQ IS M IL MU S R O IS IN PLS M  
UNDEFINITION CITY LOSCEN ESSA; SIDE OF S QLSM SF 252 ALS FHE M E COL OF NO  
104P WITE VF 104P WITES 222 ALS GLOSS WENDELQATJJE SUC  
2-4 E 14J-4-2 ALS DO IS IN PLS M 26-J-S E 888 80 ALS  
M 48J-2-2 ALS 1800 ALS S 2F-MQ MKQ IS M IL MU S R O IS IN PLS 2 85-  
124P WITE VF 14 WITES 385 ALS FHE M E COL OF NO 25 PLS  
80 ALS DO 50 PLS 2 A E 28-4-2 ALS\*  
GLOSS S QLSM SF 1800 ALS S 2F-MQ MKQ IS M IL MU S R O 50 IN PLS M 8E  
NO 2I IN FHE USNG OF NELA LOJTAEL PLS M 438 ALS SF 1800 1800 ALS  
144P WITE VF 12 WITES 1250- S-2 ALS S WITE IENEE FHE M M COL  
M S-2-2 ALS DO IS IN PLS M 22-2-4 E 22-S-2 ALS\*  
GLOSS S QLSM 1800 ALS S 2F-MQ MKQ IS M IL MU S R O S IN PLS 2 IS-I-4  
SUC FLOW SUC 2 M COL FHE 2 E COL OF SENE PLS E 1250 ALS SF 1120 AS  
ALS LNE 2 M COL OF SUC NO 3 V M Lofeeef qls 2 IO WITES E 1480 ALS\*  
124P WITE VF IS WITES 28A ALS GLOSS SLOCQ SF 820-S-2  
S-2 ALS\*  
S 2F-MQ MKQ IS M SLOCQ PLS 2 28-I-4 M2-I-2 ALS DO PLS M 80-I-S M 4-  
124P WITE VL II WITES 224 ALS SMILE IENEE 1800 ALS  
ALS S HOOK PLS M 80-I-S E 1A ALS\*  
1800 ALS S 2F-MQ MKQ IS M IL MU S R O 50 IN PLS 2 38 S I-4 M 18-I-2  
114P WITE SF IO WITES 140-1020 SUC 1242 ALS GLOSS QLSM SF  
PLS M 2I S I-S M 8 S 4-2 ALS\*  
2F- MQ MKQ IO M R O IS IN PLS 2 2I S I-S E 12 S 4-2 ALS S LOCK MPT  
104P WITE VF 3 WITES 1800 ALS GLOSS S QLSM 1800 ALS  
M 25 S 2-4 M 28 ALS\*  
2F MQ MKQ 3 M IL MU S R O 2 IN PLS 2 A I-4 M 24 S 4-2 ALS DO A IN PLS  
ALS\* 84P WITE VF 3 WITES 280 ALS GLOSS S QLSM 1800 ALS S  
MP S R O 2-IN PLS 2 28 M 8 S 1-10 ALS DO 2 IN M 40 S I-S M 12 S 2-2  
110 ALS SLOCQ S LOCQ 1450 GLOSS S QLSM 1800 ALS S 2F-MQ MKQ 3 M IL  
OF S QLSM MKQ N ON NOL4P SICE SUC K ON 204P SICE SF  
OF S QLSM SUC WITE VF A WITES 225 ALS S R' O' 50-IN ON ESSA; SICE  
R O 8 IN PLS M 14 S I-S M 11 S 2-2 ALS DO IS-IN PLS 2 88 M 10 ALS\*  
OF BEST CLEEK SF 124A ALS S WITE IENEE 1800 ALS S 2F- MQ MKQ A M S  
14P WITE VF 8 WITES 480 ALS SUC SF 102 SLOCQ QLSM  
S I-4 MESS 28 S 2-2 ALS DO 4-IN PLS PLS M 8A S 2-4 M 40 S 5-2 ALS  
SUC IJENE LTACRS 1800 ALS S 2F-MQ MKQ 6 M IL' MP S R O 8IN PLS 2 38  
84P WITE VF 2 WITES 1420 ALS FOD OF QVATCE BETWEEN 28P 28P  
PLS M 8A S I-S E 48 S I-S ALS\*  
MKQ 2 M IL' WITEP S R O 8IN PLS 2 24 S I-S E 88 ALS S MESSIICE 3IN  
OF NO 30 S H S 2 V 1A CO' PLS 204P 6028 ALS SF 1800 ALS S SLOCQ MP  
24P WITE VF 4 WITES 81A ALS S WITE IENEE FHE M E COL  
2-4 E 548 S 2-2 ALS  
WITEP SF'018 IN PLS 2 38 S 2-4 E 548 S 2-4 ALS DO IS IN PLS M 88 S  
GLOSS S LOCQ 1820 ALS S QLSM SF 1800 ALS SLOCQ WONDQ MKQ 4 M FLOW  
44P WITE VF 2 WITES 280 ALS GLOSS S QLSM 1285 ALS GLO  
DO PLS M SF S 2-4 E SI S 4-2 ALS\*  
S SLOCQ WONDQ MKQ 2 M FLOW WITEP S LOCK WONDQ PLS 2 82 E 8 S 2-2 ALS  
24P WITE VF 3 WITE 280 ALS GLOSS S QLSM SF 1800 ALS  
S LOCK PLS' 2 55 S 2-4 MESS 2 S 1-10 ALS DO PLS M 50 E IS S 4-2 ALS\*  
OF SUC' NO 2 PLS E 12 S 2-2 ALS SF 1800 ALS S SLOCQ WONDQ MKQ S M  
S SLOCQ WONDQ MADE PL 2848 28484848 S M WITITENS 10L FHE 2 E COL\*  
GLOSS SLOCQ SF 800 ALS S SLOCQ WONDQ PLS' M 5150 VI-S ALS SUC FLOW 14  
SUC' WITE VF I WITE 112 ALS' GLOSS S QLSM SF 154 ALS  
DO IS PLS 2 45 E IS 4-2 ALS  
S 2F-MQ' MKQ' I WELLOW WITEP SF'054 IN QLS' PLS M 20 2-4 E IS 4-2 ALS  
144' WITE IENEE ESSA; SF 1200 ALS' GLOSS SLOCQ 1800 ALS  
FHE PLS 204P 824 ALS' SUC MESS 31- S-2 ALS\*  
MKQ M E 2 SUC WAK PLS' E 25 ALS V SLOCQ WONDQ MKQ' M 2 2 SUC K COLI-  
PLS' M 80 ESSA; 2 ALS DO MKQ K PLS 2 30 I-4 E 18-422 ALS V SLOCQ WQ-  
FLOW WITEP S JELKE LOCK MKQ 2-2 PLS' MESS 4 1-10 ALS DO MKQ M  
WELKEP M-K-2 SUC 2 COLIITERS 10L FHE 2'M' COLIET OF WENELQ COLIIT' S  
BEIITINE SF S JELKE SLOCQ IS X SF IENEE SUC ON FOD OF S WITEP WITE SUC



17th Mile At 16 miles 591-3-5 vrs the N E cor No 14 B & B brs S 608-2-5 vrs at 380 and 1284 vrs cross draws 1900 vrs a st-md Mkd 17 M a L O 7 in brs S 82 E 12-1-5 vrs Do 7 in brs N 60-3-4 E 28-2-5 vrs.

18th mile 17 miles 665-3-5 vrs the N E cor of sur No 12 brs S 600 vrs at 1186 vrs a draw at 1600 vrs the N W cor No 2 B Merchant brs N 71 W 137-3-5 vrs 1900 vrs a st-md Mkd 18 M a L O 6 in Mkd M brs N 89 E 83-1-5 vrs Do Mkd K brs N 89 E 84 vrs.

19th Mile At 18 Miles 700 vrs a st-md brs S 1030 vrs and S 59-1-2 W 241 vrs and from said mound a L O 12 in brs S 47-1-2 W 16 vrs ( Old marks ) 1860 vrs cross a draw of Saline Creek 1900 vrs a st-md Mkd 19 M a L O 7 brs N 4 E 28 vrs. Do 6 in brs S 79 E 32-1-5 vrs,

20th Mile At 19 miles 1320 cross Saline Creek at 1900 vrs a st-md Mkd 20 M a L O 5 in Mkd K brs N 57-3-4 W 29-2-5 vrs Do 6 in Mkd M brs N 55-1-2 W 29 vrs.

21st Mile At 20 miles 1188 vrs cross a dry creek 1900 vrs a st-md Mkd 21 M a L O 6 in brs N 46-1-2 W 19-2-5 vrs Do 12 in brs S 61-1-2 E 61 vrs .

22nd Mile At 21 miles 400 vrs cross a draw at 1900 vrs a st-md Mkd 22 M a L O 5 in brs N 10-1-2 <sup>E</sup> 66 vrs Do 5 in brs S 30-1-2 W 29-1-5 vrs.

23rd Mile At 22 miles 1000 vrs cross a draw 1900 vrs a st-md Mkd 23 M a L O 18 brs North 1 E 17-3-5 vrs. Do 6 in brs S 69 1-4 E 38-1-5 vs .

24th mile At 23 miles 1562 vrs a draw 1900 vrs a st-md Mkd 24 M a L O 10 brs S 24-3-4 E 25-2-5 vrs Do 6 in Mkd M brs S 1 & 1-4 E 50 vrs

25th Mile At 24 miles 460 vrs the N W cor sur No 54 G W Walton brs S 2027 vrs 1254 cross Cummings Spring Branch 1900 vrs. a st-md Mkd 25 M a L O 12 in brs N 21-1-2 E 43-3-5 vrs Do 12 brs S 41-1-2 W 50 vrs.

26th Mile At 25 miles 485 vrs the N W cor of F A Weaver ~~pre~~-emption sur brs S 395 vrs at 1276-3-5 vrs a wire fence at 1289 vrs the NE cor of the Weaver pre-emption brs S 400-1-2 vrs and from it a st-md brs N 50 vrs 1900 vrs a st-md Mkd 26 M a L O 8 in brs S 62-1-2 W 32 vrs a rock brs N 8-3-4 E 3-1-2 vrs.

27th Mile At 26 miles 340 vrs ran South to a wire fence N E cor No ~~224~~ 224 not found at 1348 the N E cor of No 225 established by Vickery brs S 375 vrs at 1860 vrs cross Coon Hollow 1900 vrs a st-md Mkd 27 M ~~xxx~~karock brs S 42-1-2 E 9-1-5 vrs Do N 73-1-2 E 6-1-5 vrs R A Bannowsky's house <sup>mile</sup> brs N 69-1-2 W

28th Mile At 27 <sup>mile</sup> 1200 vrs cross a draw 1372-1-2 vrs a st-md brs S 461-2-5 vrs 1900 vrs a st-md Mkd 28 M L O 6 in brs N 48-1-4 W 15-3-5 vrs Do 18 brs S 68-1-2 E 25-3/6 vrs

29th Mile At 28 miles 379 vrs the N E cor No 208 ~~rs~~ C Krause brs S 363 vrs 700 vrs adrwaw 1342 vrs the NE cor No 207 and S W cor No 193 brs S 375 vrs 1900 vrs a st-md Mkd 29 M a L O 6 brs N 76-1-4 E 18-1-5 vrs Do 6 in brs S 71-1-2 E 31-1-2 vrs

30th Mile At 29 miles 400 vrs run south 385 vrs to wire fence corner not found at 1451 vrs the N E cor No 197 J Rohmuller brs N 1526 vrs 1900 vrs a st-md Mkd 30 M a rock brs N 5 E 7 3-5 vs Do brs S 1-1-2 W 11 3-5 vrs

31st Mile At 30 miles 542 vrs Bannowsky's wire fence brs S 435 vrs corner not found 625 cross Frog Spring Branch 1504 vrs a wire fence the N W cor No 174 brs N 41 minutes W 1522-1-2 vrs 1900 vrs ~~vs~~ ast-md Mkd 31 M a L O 5 in brs S 87 E 15 vrs Do 12 in brs N 20 E 35-4-5 vrs.

32nd Mile At 31 miles 1407 vrs the S E cor No 173 brs S 422 vrs 1900 vrs a st-md Mkd 32 M brs a Spanish Oak 5 in brs brs N 35-1-2 E 15-2-5 vrs a L O 15 in brs S 33-1-2 W 51 vrs.







THE STATE OF TEXAS)  
COUNTY OF MENARD )

*Kimble*

To The Honorable County Court of Menard County

*Kimble*  
*Court*

In compliance with an order of your <sup>Court</sup> made at the term 1899 to run measure mark and erect mile monuments on the *North* line of *Kimble* County showing connections with the surveys along said line I proceeded on the 9th day of October to make out and approve the following field notes for said county line in accordance with a former survey made of said line by J D Hurley special Surveyor of Menard County and W T HOPE Special Surveyor of Kimble Co under orders from the Commissioners Court of their respective Counties in 1896 and I hereby submit the same as being correct in all Particulars I was present on said work and adopt it as to correctness to be my re-survey of said line

witness my hand this 31 day Oct. 1899

*W. T. Hope*  
*Special Surveyor*  
*Kimble Co. Texas*



The State of Texas, )  
County of Kimble, ) This is to certify that the foregoing report of  
W.T.Hope, Special Surveyor of Kimble County, of the establishment of  
the boundary line between Kimble and Menard Counties, was duly approved  
by the County Court of Kimble County, on the 6th day of November 1899,  
and that the same is duly recorded in the minutes of said Court, in  
Volume No.1, on pages 294,295,296,297 & 298.

In testimony whereof, witness my hand and seal of  
office this 30th day of November 1899.

*W. G. Boyle,*  
Clerk County Court Kimble Co. Texas.



Kimble Co ~~2~~ Bdry Line 3d

Report of the  
Survey of the  
boundary line  
between Kimble  
and Menard Counties

North Line Kimble  
South " Menard  
Filed in Genl. Land  
Office 12/4/99  
Wise

Approved 12/15/99

L. C. Wise

CLERK COUNTY COURT KIMBLE CO. TEXAS.

In testimony whereof, witness my hand and seal of  
this 15th day of November 1899.

Volume No. 1, on pages 287, 288, 289, 290 & 291.

and that the same is duly recorded in the minutes of said court, in  
by the county court of Kimble county, on the 8th day of November 1899,  
the boundary line between Kimble and Menard counties, was duly approved  
W. T. Hope, Special Surveyor of Kimble county, of the establishment of  
county of Kimble, )  
The State of Texas, ) This is to certify that the foregoing report of