

State of Texas  
County of King

Field Notes for Base Line and County Boundary Between King County and Foard and Cottle Counties.

Survey commenced Oct 5<sup>th</sup> A.D. 1891

and was finished Oct 10<sup>th</sup> A.D. 1891  
1st mile Base and County Line King and Foard Counties Texas

Beginning at the N.W. corner of Knox County also the N.E. corner of King County Texas. Said corner a hewn mesquite Post 6 feet long planted 2 feet in ground and mound 2 feet high around post. said Post marked Foard on north side, King on S.W. side and Knox on S.E. side. Letters and Figures marked Blue (indelible pencil) a Gyp rock <sup>2 1/2 feet long about 5 inches wide 3 1/2 inches thick</sup> <sub>marked Oct 2<sup>nd</sup> 1891</sub> buried with a large two year old Buffers horn on south side of Post. pits East, west and south 2 x 2 feet 12 inches deep mound 2 feet high, a Bunch of Hackberry's one marked K on west and k on East brs S 23. 10' W 43 7/10 vrs a mesquite marked <sup>BT</sup> K brs S 81 1/4 W 72 vrs, a Hack-berry 4 in dia marked xx brs S 44 1/2 W 72 8/10 vrs Said corner on south side of Middle Wichita River in Horse Shoe shaped Bend of 5<sup>th</sup> River 70 vrs west of river from East and 180 vrs East from river on line west. Thence West (Nude reading mag "var" 10. 10' E) at

varas  
180  
202  
675  
1498

cross middle Wichita River at Block P  
cross division line of survey 1, 2, 3, 4, 5, 6, 7, 8, 9, 10, 11, 12, 13, 14, 15, 16, 17, 18, 19, 20, 21, 22, 23, 24, 25, 26, 27, 28, 29, 30, 31, 32, 33, 34, 35, 36, 37, 38, 39, 40, 41, 42, 43, 44, 45, 46, 47, 48, 49, 50, 51, 52, 53, 54, 55, 56, 57, 58, 59, 60, 61, 62, 63, 64, 65, 66, 67, 68, 69, 70, 71, 72, 73, 74, 75, 76, 77, 78, 79, 80, 81, 82, 83, 84, 85, 86, 87, 88, 89, 90, 91, 92, 93, 94, 95, 96, 97, 98, 99, 100  
 1140 & 1810 cross branches all running South East and 970 1/2 vrs North from N.W. corner of Knox County which is N.E. corner of King, is the N.E. corner of Survey No. 1 Block P H & C. N. R.R.C. Survey The N.E. corner of 5<sup>th</sup> Survey 1 Block P and N.W. corner of sur



varas

103 H & T C. R.R. Co are the same. No other corners for Block P, H & T C. N. R.R. Co. identified on the ground. Field Notes call for stakes no Bearing Trees given and no magnetic variations indicated in the Field Notes. Hence indicated by ~~lines~~ <sup>calls</sup> ~~for~~ <sup>for</sup> ~~courses~~ <sup>courses</sup> ~~discovered~~ <sup>discovered</sup> in this report lines ~~as~~ <sup>running</sup> at right angles and parallel to Base Line mound of Earth 2 feet high pits East and West 2 x 2 feet 14 inches deep. a double Hackberry 4 in dia mk<sup>d</sup> x x brs S 56<sup>3</sup>/<sub>4</sub> E 77<sup>7</sup>/<sub>10</sub> vrs a mesquite 2 in dia mk<sup>d</sup> x x brs S 14 E. 4.4 vrs another 4 in dia brs S 54 W 33<sup>8</sup>/<sub>10</sub> vrs

1900.8

varas

2

2<sup>nd</sup> mile Base Line and County Boundary Between King and Foard Counties, Texas.

Beginning at 1<sup>st</sup> mile mound Thence west at 202 vrs division line (by calculation as shown above) of sub 4 & 5 H & T C. N. R.R. Co. N.E. corner of S<sup>d</sup> T<sup>h</sup> 5<sup>th</sup> brs north 97<sup>6</sup>/<sub>10</sub> vrs

880  
189  
1900.8

branch runs S.E. 1120 vrs large branch runs S.E. N.E. corner of R.M. Thompson ~~Survey 15-6 Block A 6488~~ <sup>with</sup> 1059 vrs (S. 15, 813) mound of Earth for 2<sup>nd</sup> mile monument 2 feet high pits East and West 2 x 2 feet 12 inches deep a bunch of Hackberry trees on north side mk<sup>d</sup> x x brs 72<sup>1</sup>/<sub>4</sub> W 35<sup>3</sup>/<sub>10</sub> vrs a mesquite 4 in dia mk<sup>d</sup> x x brs S 59<sup>1</sup>/<sub>2</sub> W 28<sup>2</sup>/<sub>10</sub> vrs

varas

3

3<sup>rd</sup> mile Base Line and County Boundary Between King and Foard Counties State of Texas

202

Beginning at the 2<sup>nd</sup> mile mound Thence West at cross division line (by calculation as shown above) Surveys N<sup>o</sup>. 5 and 5 H & T C. N. R.R. Co Survey. No Field Notes or data to locate F.P. Knott, surveys adjoining S<sup>d</sup> Survey No 5. (See sketch for N.E. corner of R.M. Thompson Survey 15-6 and S.W. corner survey N<sup>o</sup>. 5 - H & T C. N. surveys.)

1900.8

Rock planted in ground 18 inches deep Rock 2<sup>1</sup>/<sub>2</sub> x 2 feet 2<sup>1</sup>/<sub>2</sub> inches thick mk<sup>d</sup> S.E. <sup>of</sup> ~~the~~ S.W. Foard, King on South pits East West and North mound west of small valley on or near edge of Bank at



NW corner of said valley, a bunch of Hack bryson m<sup>k</sup>d x  
brs S 34° W 24, <sup>4</sup>/<sub>10</sub> vrs another m<sup>k</sup>d x brs S 50° W 29 vrs

varas

(4)

4<sup>th</sup> mile Base Line and County Boundary

Between King and Cottle Counties

Begin at 3<sup>rd</sup> mile mound SE corner of  
Cottle County Thence West at

590, 1170, and 1725 vrs branches general course South  
1900.8 mound of Earth 2 feet high pits East & West 2 x 2  
feet, 12 inches deep a mesquite leaf on N.W. 2 in dia brs S 47° W

5 <sup>2</sup>/<sub>10</sub> vrs m<sup>k</sup>d x another m<sup>k</sup>d x brs N 8 <sup>1</sup>/<sub>2</sub>° W 56 vrs

vrs

(5)

5<sup>th</sup> mile Base Line and County Boundary for  
King and Cottle counties Begin at 4<sup>th</sup> mile Mound  
Thence West at

135, 387, 930, 1510 vrs same branch general course S.E.  
1900.8 mound of Earth 2 feet high pits East and West  
2 x 2 feet 1 foot deep a Hackberry 7 in dia on North  
side of branch brs S 6 <sup>1</sup>/<sub>2</sub>° E 74 <sup>1</sup>/<sub>2</sub> vrs a mesquite 3 in dia

brs S 2° W 52 vrs bearings m<sup>k</sup>d x (no data for Land  
→ From a point 450 vrs East of 6 mile mound the SW  
corner of survey 442 A, B, N, brs South 37 16 <sup>1</sup>/<sub>2</sub> vrs  
F. 5746. This is also the S.E. corner of F. M. Gaughey survey  
as claimed on the ground no field notes to further  
identify by.

(6)

6<sup>th</sup> mile Base Line and County Boundary  
between King & Cottle Counties. Begin at 5<sup>th</sup> mile  
mound Thence West at

1020 high rocky ridge runs East and West  
1450 SW corner of survey 442 A, B, N brs South 37 16 vrs (F. 5746) This also S.E. corner  
1800 small branch valley. of F. M. Gaughey survey

1900.8 mound of rock and Earth thrown around same  
in small branch valley 2 <sup>1</sup>/<sub>2</sub> feet high pits East and West 2 x 2  
feet 1 foot deep one rock m<sup>k</sup>d. 6 M one on North side  
m<sup>k</sup>d. C. one on South m<sup>k</sup>d. K.

7<sup>th</sup> mile Base Line and County Boundary between  
King and Cottle Counties Begin at 6<sup>th</sup> mile mound of rock



4

7th mile

varas Thence West, at  
 102 cross <sup>branch</sup> Slough runs S W, at  
 1097 the S, W corner Survey N 85 E F.P. Knott's Survey  
 brs South 2754 vrs.  
 1660 Slough  
 1800 small creek or branch runs South into Harris creek  
 1900.8 mound of Earth 2 feet high pits East and West  
 2 x 2 feet one foot deep a mesquite 4 in dia brs S 58 W  
 36 1/2 vrs Hackberry 6 in dia brs S 16 1/2 E - vrs.

vrs  
 8th Mile Base Line and County Boundary between  
 King and Cottle Counties Begin at the 7th mile mound  
 Thence West, at  
 1027 SW corner of Survey S 1 P. Knott brs South 2754 vrs (S, 16158)  
 1220 East end of rocky ridge brs North about 75 vrs  
 Line in North edge of Harris Creek valley  
 1550 rocky knob scrub Hackberry brs North 2 vrs.  
 1900.8 mound of Earth 2 feet high pits East & West 2 x 2 feet  
 1 foot deep on East side of a branch a mesquite 2 in dia brs  
 S 67 1/2 W 5 1/2 vrs another 4 in dia brs S 55 1/2 E 40 vrs S mesquite  
 leans west. (No Field Notes to identify lines and corners)

9th Mil. Base Line and County Boundary between  
 King and Cottle Counties Begin at the 8th mile mound  
 Thence West

135 branch runs <sup>South</sup> 640 bunch of mulberry trees <sup>in sink or hole</sup> brs <sup>South</sup> 1/4 vrs  
 Line in North side of Harris creek valley (No Field  
 #7 notes to identify Survey lines and corners)  
 1900.8 mound of Earth 2 feet high pits East and West 2 x 2 feet 1 foot  
 deep 3 Hackberry trees one on west 5 in dia brs N 21 W 20 vrs  
 a mesquite 4 in dia brs N 28 1/2 E 26 1/2 vrs both trees marked xx

10th Mile Base Line and County Boundary between  
 King and Cottle Counties Begin at 9th mile mound  
 Thence West at 340 branch large one runs S E

1000 vrs west end of ~~land~~ in valley 1480 <sup>vrs</sup> sandridge  
 1900.8 mound of Earth 2 feet high pits East & West 2 x 2 feet



vrs

1/2 feet deep mound on a south slope of hill rock hill vrs north a bunch of hackberry vrs 44 1/2 2 vrs a mesquite 3 in dia vrs S 49 1/2 E. 16 vrs a rock in mound 3 feet long 20 inches wide 1 1/4 inches thick mk<sup>d</sup> 10 on south and C. 7. M on north 11<sup>th</sup> mile Base Line and County Boundary between King and Cottle Counties Begin at 10<sup>th</sup> mile mound

1850

Thence West at a long shin Oak and rock ridge to East edge of sandy shin Oak valley (2<sup>nd</sup> class Land)

1900.8

mound of Earth and rock mk<sup>d</sup> 11 on South and C 8 on north pits East and West loose Earth and rock around said mk<sup>d</sup> rock.

vrs

12<sup>th</sup> mile Base Line and County Boundary between King and Cottle Counties Begin at 11<sup>th</sup> mile mound Thence West at across shinners and sand ridges at

1900.8

mound of Earth pits East and West 2 x 2 feet 1 1/2 feet deep. a mesquite 1 1/4 in dia vrs N 18 E 4 7/10 vrs another 2 in dia vrs N 66 1/4 W 15 7/10 vrs bearings mk<sup>d</sup> xx

vras

a bunch of tall shin Oak <sup>bes</sup> west on line 60 vrs 13<sup>th</sup> mile Base Line and County Boundary between King and Cottle Counties Begin at 12<sup>th</sup> mile mound Thence West through shinners and over sand ridges to

926

wire fence 2<sup>d</sup> or west line of 1000 pasture and East Line of 8 = 8 pasture (1000 belong to Braut) 8 = 8 belongs - Pace of Virginia. J. D Jeffries manager, at

1770

same shinners and a corn field <sup>R. N. Gillis</sup> about 200 vrs north

1900.8

mound of Earth 2 feet high pits 2 x 2 feet 18 inches deep a small mesquite 2 in dia at bottom vrs S 26 1/2 E 12 1/2 vrs mk<sup>d</sup> 13. M near the ground

vrs

14<sup>th</sup> mile Base Line and County Boundary for King and Cottle Counties. Begin at 13<sup>th</sup> mile mound

567

Thence West at cross East line of N. T. & C. T. S. E. R. R. C. survey N. E. corner vrs North 57 1/4 vrs

872

wire fence ~~xxx~~ R. N. Gillis pasture, said Gillis living on said N<sup>o</sup> 1 R. R. C. survey and claims <sup>on same</sup> a homestead



hrs

1040 ~~R. N. Gillis~~ ~~Bank~~ ~~at~~ ~~60~~ ~~acres~~ ~~Homestead~~  
 1412 ~~west~~ ~~line~~ ~~of~~ ~~stead~~ ~~Gillis~~ ~~Pasture~~ ~~at~~ ~~force~~ ~~and~~  
 8-8 pasture fence runs North and south  
 1900.8 mound of Earth 3 feet high pits East and west 2 x 2 feet 18 inches deep a mesquite 1 1/2 in dia brs S 2 1/2 E 10 1/2 hrs another 1 1/2 in dia brs S 16 E 10 7/10 hrs.

15 15th mile Base Line and County Boundary between King and Cottle Counties Begin at 14th mile mound Thence West across Shinnery and sand ridges  
 1900.8 mound of Earth 2 1/2 feet high pits East and west 15 inches deep a mesquite 2 in dia mkd 15 M brs S 64 E 13 3/10 hrs another 2 in dia at ground mkd 12 M brs N 38 W 10 5/10 hrs

16 16th mile Base Line and County Boundary between King and Cottle Counties Begin at the 15th mile mound. Thence West at through open mesquite and Shinnery lying South of North Wichita River at  
~~648 the N.W. corner of San Augustino University Land~~  
~~brs North 55 40 hrs.~~

1900.8 mound of Earth 2 feet high pits East and west 2 x 2 feet 1 1/2 deep a mesquite 3 in dia brs S 3 1/2 E 12 1/2 hrs mkd 16 M. another 2 in dia mkd 13 M brs N 16 W 13 7/10 hrs

hrs (17) 17th mile Base Line and County Boundary between King & Cottle Counties Begin at 16th mile mound Thence West across Shinnery sand rough and mesquite at 625 hrs south edge of Wichita valley about 150 hrs to the North  
 648 N.W. corner of San Augustino University survey brs North 55 40 hrs  
 1530 out in fine valley (Wichita river)

1900.8 mound of Earth 2 feet high in valley pits East & West 2 x 2 feet 18 inches mesquite Post 2 1/2 in dia in mound mkd 17 on south and 14 on north marks keeled in red

hrs (18) 18th mile Base Line and County Boundary between King and Cottle Counties Begin at 17th mile mound Thence West at 675 hrs cross branch runs North into Wichita River remainder of 18th mile nice open valley



vrs

(18th mile)

1900.8 mound of Earth on South side of Wichita River in valley pits East and West 2x2 feet 18 inches deep a cotton-wood on South Bank of Wichita River 24 in dia. mk<sup>d</sup> C. 15 brs N 33 1/4 W 195 1/2 vrs a chittin 2 in dia. mk<sup>d</sup> K. 18. M. brs S 73 1/2 W

60 1/10 vrs

19 1/2 mile Base Line and County Boundary Between King and Cottle Counties Begin at 18th mile mound Thence West at 245 vrs river Bank 265 vrs enter river bottom river spreads out no channel (magnetic needle 85 5/8 E) to

1480 cross Cottle and Guthrie road ... .. 10. 15. E

1900.8 mound of Earth 3 feet high pits East and west 2x2 feet 18 inches deep in old river bed. bunch of Hack berry <sup>5 in dia</sup> one, mk<sup>d</sup> K. 19. M. brs S 79 1/4 E. 43 1/2 vrs. another mk<sup>d</sup> K. 19. M. brs S 38 3/4 W 86 vrs another mk<sup>d</sup> C. 16. brs N 14 1/2 W 60 1/10 vrs

vrs

20 1/2 mile Base Line and County Boundary Between King and Cottle Counties Begin at 19th mile mound Thence West at

25 cross small sand bar at cross division line between Jas R. Robertson Sur<sup>r</sup> and E. S. R. R. Co Survey N. 2

45 the N.E. corner of Georgetown R.R. Co. Survey N. 25 brs South 265 vrs. at

1118 wire fence and enter field 625 cross wire fence and leave (Haghlady) field. 665 vrs small branch

1900.8 mound of Earth Gyp rock sunk in ground ~~in~~ in mound 16x16 inches on top mk<sup>d</sup> 20 on South and 17 on North a round white top mound about 7 feet high brs S 15 1/4 E 60 vrs.

21 1/2 mile Base Line and County Boundary Between King and Cottle Counties Begin at 20th mile mound Thence West, at 35 vrs wire fence runs North and South at 720 vrs East edge of mesquite flat 734 vrs cross

road runs North and South (Land nice level flat) last two thirds of this mile. 730.8 vrs

1900.8 mound of Earth 2 feet high pits East & West 2x2 feet 18 inches deep mound <sup>36 vrs</sup> SE of Pitchfork & Quanch road. runs N.E. and S.W.

Q County 64 279



22<sup>nd</sup>

22<sup>nd</sup> mile Base Line and County Boundary Between King and Cottle Counties Begin at 21<sup>st</sup> mile mound

Thence West, at 36 hrs cross Pitchfork and Danah road

1400 course N 67° SW, 662 neighborhood road 790, 1762 hrs cross branches  
1810 cross East line of Survey N:13 B.S. & F. this is claimed as East line of N:12 B.S. & F. By W.S. Stevens occupant of the land  
wire fence East side of W. J. Stevens improvement

The S.E. corner of Survey N:13 B.S. & F. identified by Bearing trees  
Bearings check except the distances to the trees are exchanged or swapped

1900.8 mound of Earth (in W. J. Stevens field) 2 feet high pits East  
a mesquite 4 in dia mk<sup>d</sup> K. 22 M hrs S 76° E 71<sup>10</sup> hrs SE corner of N:13 Stevens H. 187 3/4 W 63 hrs  
and 10 east 2 x 2 feet 15 inches deep (Base Line indicates an extra  
section or mile more than map shows between 20 mile mound  
and 22<sup>nd</sup> mile mound.)

23<sup>rd</sup> mile Base Line and County Boundary Between King and Cottle Counties, Begin at 22<sup>nd</sup> mile mound Thence West at

170 hrs wire fence west of W. J. Stevens field 210 hrs branch runs south 290 hrs branch runs south.

1458 cross wire fence and enter 8-8 pasture fence west division

1605 head of small branch runs south.

1900.8 mound of Earth 2 feet high pits East and West 2 x 2 feet 15 inches  
deep a mesquite 2 1/2 in dia mk<sup>d</sup> K. 23 M hrs S 31 1/4 W 3 1/2 hrs Hackberry  
4 in dia mk<sup>d</sup> C. 20 M. hrs N 42 3/4 W 12 1/2 hrs.

24<sup>th</sup>

24<sup>th</sup> mile Base Line and County Boundary Between King and Cottle Counties Begin at 23<sup>rd</sup> mile mound Thence West at

135 large branch<sup>run SE</sup> at 190 and 420 hrs small branches. 1100 hrs small  
deep ravine runs North, into branch 1380 deep branch runs  
N.E.

1900.8 mound of Earth 2 feet high pits East and West 2 x 2 feet 18 inches  
deep a lone mesquite hrs N 65 3/4 W 26 6/10 hrs mound about  
100 hrs East of top of high hill

25<sup>th</sup> mile Base Line and County Boundary Between King and Cottle Counties, Begin at 24<sup>th</sup> mile mound, Thence West at  
across nice open Prairie

1860 branch runs south

1900.8 mound of Earth 2 feet high 2 x 2 feet 18 inches deep 40 hrs  
8.



vars

West of large branch and on south side of small ravine that runs East into larger branch. a scrubby mesquite 2 in dia on North side of small ravine brs N 35 1/2 W 33 3/10 yrs a Gyp rock 8 x 8. 8 inches thick mkt<sup>d</sup> 25 in mound

vars

26<sup>th</sup> mile Base Line and County Boundary Between King and Cottle Counties Begin at 25<sup>th</sup> mile mound & hence West at

340 large branch runs S.E. 440 small branch runs S.E.

1660 in nice Prairie

1873 8 = 8 Ranch and Quanah Road. (From 18<sup>th</sup> to 30<sup>th</sup> mile mound magnetic needle indicates Local attraction mag<sup>n</sup> variation indicated from 9° 55' E to 10° 15' E)

1900.8 mound of Earth 2 feet high pits East and west 2 x 2 feet 18 inches deep hub or Block of wood and with tack in it in mound a tack by 10 in dia mkt<sup>d</sup> K, 26, N. brs S 5 1/2 W 317 yrs.

vars

27<sup>th</sup> mile Base Line and County Boundary Between King and Cottle Counties Begin at 26<sup>th</sup> mile mound Hence West at

1080 branch 1410 nice open Prairie fine Wheat Land

1540 branch runs S.E.

1635 a rock mkt<sup>d</sup> N.W. 2. (supposed to be N.W. corner of survey N: 2 John H. Gibson) brs North 468 yrs

1900.8 mound of Earth 2 1/2 feet high pits East and West 2 x 2 feet 15 inches deep small branch brs west 7 1/10 yrs. a mesquite 5 in dia mkt<sup>d</sup> C, 24, brs N 7 1/2 W 14 2/10 yrs. Hackberry mkt<sup>d</sup> K, 27, N, 10 in dia brs S 30 W 19 8/10 yrs.

vars

28<sup>th</sup> mile Base Line and County Boundary Between King and Cottle Counties Begin at the 27<sup>th</sup> mile mound Hence West at 270 yrs small branch runs South

490 large branch runs S.E. 910 and 940 small branches run North into larger ones

1900.8 mound of Earth 2 feet high pits East and West



10

28<sup>th</sup> mile

hrs

2 x 2 feet 12 inches deep a mesquite 1/2 in dia  
mkd XX hrs S 17 1/2 W 3 3/10 hrs mesquite bush mkd  
XX hrs N 7 1/2 E. 1 8/10 hrs

hrs

29<sup>th</sup> mile Base Line and County Boundary Between  
King and Cottle Counties Begin at 28<sup>th</sup> mile mound  
Thence West at

200 and 1020 small branches run south  
1780 branch runs south

1900.8 mound of Earth 2 feet high pits East and West  
2 x 2 feet 12 inches deep a mesquite 3 in dia mkd  
K. 29. M hrs S 21 E. 19 6/10 hrs another 1 1/2 in dia mkd  
C. 26. M hrs N 7 W 17 hrs.

30

30<sup>th</sup> mile Base Line and County Boundary Between  
King and Cottle Counties Begin at 29<sup>th</sup> mile mound  
Thence West a

1383 branch runs S.W. last mile low rolling mesquite  
hills magnetic needle indicates local attraction  
from 18<sup>th</sup> mile to 30<sup>th</sup>, varying <sup>irregularly</sup> 30 (minutes) in  
~~12 miles~~ 12 miles

1645 the NW corner of survey N: 4 John. H. Gibson  
hrs South 1457 hrs

1900.8 rock Hard sand stone in East edge of large  
branch that runs South. a mesquite 4 in dia  
in Cottle County mkd C. 27. M hrs N 25 E. 28 1/2 hrs  
another 3 in dia mkd M. S. E. hrs N 37 1/2 W 46 7/10 hrs  
County Corner rock for Motley 4 1/2 feet long 7 x 10 inches  
at the top bottom 8 x 13 inches Edges # or corners facing  
North and South and East & West Marked S. F. M. C., on NW side  
This also the S.W. corner of Cottle County N.E. corner of Dickens  
County and N.W. corner of King County. Survey comm-  
enced Oct. 5<sup>th</sup> A.D. 1891 and finished Oct. 13<sup>th</sup> A.D. 1891

State of Texas  
County of King

A. J. Sartor, Chas. M. Gee, Perry Moyers. - Grimes Chain Carrier

29  
County  
1892

We the undersigned C. D. Brooker, County Surveyor of King



County and Dra. Millington State Surveyor, Hereby  
Certify that the above and foregoing Field Notes  
truly indicate, The Base Line and County Boundary  
Between King and Foard & Cottle Counties, <sup>and its connection with Land Lines</sup> as ~~run~~  
Surveyed by us, Survey Commenced Oct. 5<sup>th</sup> A.D. 1891  
and ended Oct. 13<sup>th</sup> A.D. 1891. Surveyed from Official data  
of King County and working sketch from Land Office Austin  
and from Natural objects called for in same  
Land Lines were run by C. J. Browder County Surveyor  
of King County State of Texas. and Base Line and  
County Boundary run by Dra. Millington State  
Surveyor State of Texas.

This Oct. 14<sup>th</sup> A.D. 1891

C. J. Browder County Surveyor of King County, <sup>State of Texas</sup>  
Dra. Millington State Surveyor State of Texas  
If further connections with Land Lines are required notify  
County Surveyor, C. J. Browder and he will take them at  
regular rates allowed by Law, C. J. Browder



King Col. Bery Line 1  
County Boundary and  
Base Line between the  
Counties of

King and  
Cottle and Board

Filed Oct 19<sup>th</sup> 1891  
By B. B. Little  
C. C. Little

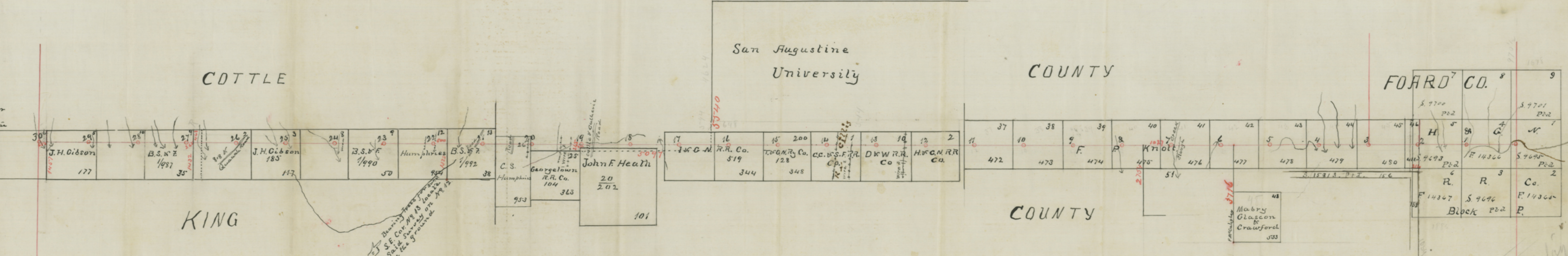
Examined and affixed  
Oct 22/91 ~~Recommout~~



We the undersigned C. S. Browder Co. Surveyor of King County Texas & Ira Willington State Surveyor do hereby certify that the within & foregoing plat truly indicates the base line & County bounds & lines between King, Foard, & Cottle Counties & the connections of land lines across which the base line runs, as surveyed by us according to such <sup>official</sup> data as we had.

Survey commenced October 5<sup>th</sup> & ended October 13<sup>th</sup> AD 1891. Land lines run by C. S. Browder Surveyor of King County & base line by Ira Willington State Surveyor.

October 14<sup>th</sup> 1891  
 Ira Willington  
 State Surveyor  
 C. S. Browder  
 County Surveyor King Co. Texas





Base Line and Co. Bdy  
between the Counties of  
King and  
Cottle and Foa  
+ King + Kinsey  
Filed Oct 19<sup>th</sup> 1891.

Examined and a  
10/22/91

a 13