

1/2 King County

E. W and S. boundaries  
(4) (3) (2)

Filed July 2/92

The South side needs a  
section and connection  
to land corner -

The course of the line  
is incorrect.

Resurvey

An endorsement on the plan  
of the East boundary

County

64887

South Bdry King Co

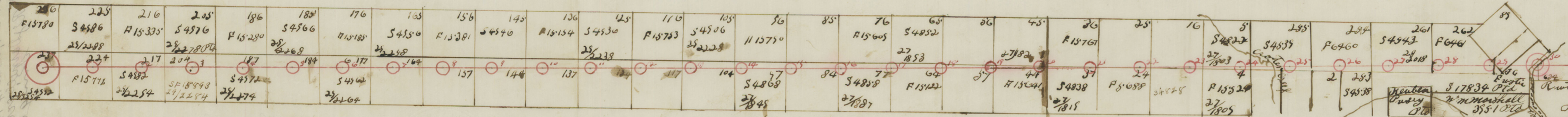
State of Texas  
County of King

I G D Browder hereby certify that  
the within and foregoing plat of the  
county Boundary Line between King and  
Stonewall Counties and its connections with said

lines and corners as surveyed  
by me in connection with  
J O Aiken sur. Stonewall Co

Survey commenced Feb. 22  
and finished ~~at~~ <sup>in</sup> 5-1882  
to line run by G. D. Browder sur. King Co  
and connections made by J. O. Aiken  
sur. Stonewall Co.

FILED AND RECORDED IN THE OFFICE OF THE COUNTY CLERK OF KING COUNTY TEXAS



Survey commenced Feb. 22 and finished in 5-1882 to line run by G. D. Browder sur. King Co and connections made by J. O. Aiken sur. Stonewall Co.

South Bdry King Co

County 4886



The State of Texas }  
 County of King } Field notes of County Line  
 Between King and Stonewall Counties  
 Beginning at the S. W. cor of King and  
 N. W. cor of Stonewall which is also, the S. E.  
 cor of Dickens and the N. E. cor of Kent counties  
 at a mesquite post 4 inches square marked  
 X on E. and W. Sides planted in an earth md 4  
 ft high with four pits 8 feet apart N. S. E. & W.

1<sup>st</sup> Thence East at right angles with the W line of  
 King and E. line of Dickens Counties (at 1040  
 vs cross canyon running N. E. at mouth of  
 one coming in from N. N. W.) 1900<sup>8</sup>/<sub>10</sub> vs to the 1<sup>st</sup>  
 mi. md. a md. of earth 2 ft high with 2  
 pits E. & W.

2<sup>nd</sup> Thence East on 2<sup>nd</sup> mi 1900<sup>8</sup>/<sub>10</sub> vs a md of earth  
 2 ft high with 2 pits E. & W. a mes. marked  
 K 2 M hrs W 1 vs.

3<sup>rd</sup> Thence East on 3<sup>rd</sup> mi (at 1553 vs creek) 1900<sup>8</sup>/<sub>10</sub>  
 vs md. of earth 2 ft high with 2 pits E. & W.  
 a cedar 10 in in dia on hill marked K 3 M hrs  
 N 59 W 135 vs.

4 Thence East on 4<sup>th</sup> mi 1900<sup>8</sup>/<sub>10</sub> vs a md of earth 2  
 ft high with 2 pits E & W. a mes. marked K 4 M  
 hrs N 50 W 2 6 2 vs another marked S 4 M hrs S 32 2  
 W. 11 vs.

5 Thence East on 5<sup>th</sup> mi. (at 530 vs cross Dove creek)  
 1900<sup>8</sup>/<sub>10</sub> vs the 5<sup>th</sup> mi md. a large Gypsum rock  
 Planted in md of earth on W side of Dove creek  
 a large mes. tree marked S 5 M hrs S 11 2 E 2 2 vs

6 Thence East on 6<sup>th</sup> mi (at 96 vs cross Dove creek) 1900<sup>8</sup>/<sub>10</sub>  
 vs an earth md 2 ft high with 2 pits E. & W. a  
 mes. marked S 6 M hrs S 10 E 2 vs another marked  
 K 6 M hrs N 2 1 W. 11 vs.

7 Thence East on 7<sup>th</sup> mi (at 42 vs cross Salt Crater,

- (at 1100 vrs recross Salt Croten) 1900 $\frac{8}{10}$  vrs on Earth md,  
 2 ft high with 2 pits E. & W. a harkberry marked  
 S 7 M hrs S 13 E. 2 $\frac{1}{2}$  vrs a cedar marked K 7 M hrs N 64  
 E 13 $\frac{1}{2}$  vrs
- 8 Thence East on 8" mi (at 992 vrs cross Branch course  
 S) 1900 $\frac{8}{10}$  vrs md of Earth 2 ft high with 2 pits E,  
 & W. a mes. marked S 8 M hrs S 31 $\frac{1}{2}$  W. 2 vrs another  
 marked K 8 M hrs N 80 E 22 $\frac{1}{2}$  vrs.
- 9 Thence East on 9" mi (at 500 vrs ponds of water) 1900 $\frac{8}{10}$   
 vrs md of Earth 2 ft high with 2 pits East & W.
- 10 Thence East on 10" mi (at 700 vrs Small canyon  
 1900 $\frac{8}{10}$  vrs a md. of Gypsum 2 ft high a cedar marked  
 S 10 M hrs S 51 W 4 vrs do marked K 10 M. hrs N 18 $\frac{1}{2}$  E 8 $\frac{1}{2}$  vrs
- 11 Thence East on 11" mi (at 945 vrs cross Branch Course  
 S.) Passing on this the 11" mi a point 7280 vrs N of the N. E.  
 cor of sur 232 on S. L. of Blk F. H. & J. C.) 1900 $\frac{8}{10}$  vrs  
 a Gypsum. md. 2 ft high. a harkberry marked  
 K 11 M hrs N. 54 $\frac{1}{2}$  E. 10 $\frac{1}{2}$  vrs another marked S 11 M  
 hrs S 89 E 23 $\frac{1}{2}$  vrs.
- 12 Thence East on 12 mi (at 1822 $\frac{1}{2}$  vrs Boydston's fence)  
 1900 $\frac{8}{10}$  vrs Earth md 2 ft high with 2 pits E. & W.
- 13 Thence East on 13 M (at 360 vrs pass through Boydston's  
 yard) 1900 $\frac{8}{10}$  vrs md. of Earth 2 ft high with 2 pits  
 E. & W. a mes. marked S 13 M hrs S. 87 W. 31 $\frac{1}{2}$  vrs
- 14 Thence East on 14 mi 1900 $\frac{8}{10}$  vrs an Earth md. 2 ft  
 high with 2 pits E. & W. a mes. marked S 14 M hrs  
 S 80 E. 9 $\frac{3}{4}$  vrs another marked K 14 M hrs N 66 3 13 $\frac{1}{2}$  vrs
- 15 Thence East on 15 mi 1900 $\frac{8}{10}$  vrs an Earth md with 2,  
 pits E. & W. a mes. marked S 15 M hrs S 14 $\frac{1}{2}$  W 7 $\frac{1}{2}$  vrs  
 another marked K 15 M hrs N. 65 W. 3 vrs
- 16 Thence East on 16" mi 1900 $\frac{8}{10}$  vrs an Earth md 2 ft  
 high with 2 pits E. & W.
- 17 Thence E. on 17 mi (at 104 vrs Hb. Hb. Hills wire fence)  
 1900 $\frac{8}{10}$  vrs a rock md 2 ft high on W. bank of

- Small Branch course N. E. a hackberry marked S 17 M hrs S 53° W 2 vrs another marked K 17 M hrs N 16 W 6 vrs
- 18 Thence East on 18 mi (at 920 vrs branch course North) 1900<sup>8</sup>/<sub>10</sub> vrs a rock md a cedar marked S 18 M hrs S 82° W. 8 vrs
- 19 Thence East on 19 mi. passing a pt 7632 vrs N of S. E. cor of Sur 80 BLK F) 1900<sup>8</sup>/<sub>10</sub> vrs an earth md 2 ft high whence a hackberry marked S 19 M. hrs S 88° E 3 vrs
- 20 Thence East on 20 mi 1900<sup>8</sup>/<sub>10</sub> vrs a Stone md a cedar marked S 20 M hrs S 71. E. 3 vrs another marked K 20 M hrs N 36° E 3<sup>1</sup>/<sub>2</sub> vrs,
- 21 Thence East on 21 mi 1900<sup>8</sup>/<sub>10</sub> vrs Stone md whence a hackberry marked S 21 M hrs S 21° E 2<sup>1</sup>/<sub>2</sub> vrs a cedar marked K 21 M hrs N. 40 W. 6<sup>1</sup>/<sub>2</sub> vrs.
- 22 Thence East on 22 mi 1900<sup>8</sup>/<sub>10</sub> vrs Stone md whence a cedar marked K 22 M hrs N 64° E 2<sup>1</sup>/<sub>2</sub> vrs,
- 23 Thence East on 23 mi (at 960 vrs Branch course N. E.) 1900<sup>8</sup>/<sub>10</sub> vrs a Gypsum md, 2 ft high whence a cedar marked S 23<sup>M</sup> W. side and K 23 M, on E. side hrs W. 4. vrs.
- 24 Thence East on 24 mi (at 770 vrs Small canyon at 1520 another canyon at 1799 Circle fence at 1833<sup>1</sup>/<sub>2</sub> figure 8 fence at 1900<sup>8</sup>/<sub>10</sub> vrs rock md 2 ft high whence a cedar marked S 24 M hrs S 57<sup>1</sup>/<sub>2</sub>° E 4<sup>1</sup>/<sub>2</sub> vrs
- 25 Thence East on 25 mi (at 132<sup>1</sup>/<sub>2</sub> vrs E. String of 8 fence at 180 vrs branch at 700. vrs Big Croton Creek at 1657<sup>1</sup>/<sub>2</sub> vrs Circle fence) and passing on this mi a point 8010 vrs North of the S. E. cor of BLK F and the N. E. cor of BLK, D, H & T & RR co, at 1900<sup>8</sup>/<sub>10</sub> vrs an earth md 2 ft high on E side of pond whence a hackberry in Dia marked S 25 M hrs S 14 W 2<sup>1</sup>/<sub>2</sub> vrs another marked K 25 M hrs N 74<sup>1</sup>/<sub>2</sub>° E. 7 vrs
- 26 Thence East on 26 mi (at 310 vrs Branch course S. at

- 1900<sup>8</sup>/<sub>10</sub> vs Earth md 2 ft high 2 pits E. & W. whence  
a mes. marked S 26 M hrs S 43 W. 18 1/2 vs.
- 27 Thence East on 27 mi at 995 vs Branch course  
S. E. at 1900<sup>8</sup>/<sub>10</sub> vs on Earth md 2 ft high whence  
a mes. marked S 27 M hrs S 35 1/2 E 15 vs.
- 28 Thence E. on 28 mi (at 56 vs Branch at 1343 another  
Branch at 1900<sup>8</sup>/<sub>10</sub> vs a stone set in ground and 2 1/2  
feet high marked on N. side K 28 M + on S. side S,  
28 M a mes marked K 28 M hrs N 89 E. 10 1/2 vs.
- 29 Thence East on 29 mi (at 715 vs Branch course S,  
at 767 a rock marked SW. 89 hrs S. 1 vs at 1900<sup>8</sup>/<sub>10</sub>  
vs on Earth md 2 ft high with 2 pits E. & W  
a mes. marked K 29 M hrs N 1 1/2 E 4 vs
- 30 Thence East on 30 mi (at 775 vs Small Branch  
course S. at 903 vs wire fence at 1020 vs Brazos  
River at 1900<sup>8</sup>/<sub>10</sub> vs an Earth md, 3 ft high with  
4 pits N. S. E & W. for the 30 mi md, which is the  
S. E. cor of King the N. E. cor of Stonewall the N. W.  
cor of Haskell and the S. W. cor of Knox counties  
From which the N. E. cor of a survey in the name  
of Rutley Campbell hrs S 83 1/2 E 5604 vs and the  
N. E. cor of a survey in the name of George  
Francis hrs S 60 E 5100 vs

{ State of Texas  
{ County of King

we the under signed surveyors hereby certify that  
the above and foregoing field notes truly described  
the County Boundary Line between King and  
Stonewall Counties as surveyed by us. Survey  
Commenced on the 22<sup>nd</sup> day of February 1892  
and Finished on the 5 day of March inclusive  
County Line Surveyed by C. J. Browder Sur King Co,  
and connections made by J. O. Aiken sur Stonewall Co,

Chain carriers }  
John Newton }  
Graham }

C. I. Browder sur King co,

F. O. Aiken sur  
Stonewall co,

Chainmen }

John Watson  
Mel. Gobles

Filed for record April 14 1892 at 1 o'clock PM and duly  
Recorded the 14 day of May 1892 at 11 o'clock AM  
R. J. Darnell ecc  
King co, Texas

1632—CERTIFICATE OF TRUE COPY

For Sale by Geo. D. Barnard & Co., Prs., St. Louis. I-GS-E Class 6

THE STATE OF TEXAS.

County of King } I, R. J. Darnell  
Clerk of the County Court of King County, Texas, do hereby certify that  
the foregoing is a true and correct copy of the original instrument which is of record  
in minutes of Commissioners Court in Book 1 on Pages 118 to 121

~~now~~ <sup>on record</sup> ~~file~~ in my office.

Given under my hand and the seal of said Court, at Office in Guthrie  
this, the 25 day of May A. D. 1892

ATTEST:

R. J. Darnell Clerk.  
By \_\_\_\_\_ Deputy.



course and distance must be given to two corners of each survey through which the body line passes.

There is no variation given, and the objective point as per field notes & sketch do not agree with data on file in this office as the point for the common corner of

the other two interested Counties (Haskell and Knox) The western <sup>of your County</sup> body is shown to be parallel with the land lines while the f-n & sketch of this line shows convergence.

The S E cor of King should be ascertained by running south thirty miles from the N W corner of Knox county on the base line established by Mr Fra Wellington.

County Line between King & Stonewall Counties

Filed for record April the 14 1892 at 1 o'clock P.M.

R. J. Darnell ccc King Co Texas

Recorded the 24 day of May 1892 at 11 o'clock a.m. in Book 1 Pages 118 119 120 & 121

R. J. Darnell ccc King Co Texas

The within filed notes cannot be accepted and approved for the following reasons to wit: