

1

The State of Texas } Field notes of county line
County of King } between King and Dickens
Counties Beginning at S.W. corner of battle
and N.W. corner of King this being also the
S.E. corner of Motley county and N.E. corner
of Dickens County corner a large Stone
4½ feet long 7x10 at top 10x13 inches at bottom
marked S.E. M.C. on N.W. Side Edges
facing North South East and west planted
in East edge of a large branch that runs South
Set in ground 2½ feet a mes. marked M.S.E.
brs N 34½ W 46.7 vs another 4 in. in dia brs N
25° E 38½ vs

1st Thence South at right angles with Base line at
80 vs cross branch at 275 vs crosses branch again
at 375 vs recross branch at 600 vs cross branch
again at 1454 cross S.B.L. of Section 8 J. H. Gibson
and 263 vs west of the S.E. corner of said survey
at 1900⁸/₁₀ vs the first mile mound two pits N &
S with Earth mound between 2 feet high from
which a cotton wood 24 in dia marked K.I.M. brs
South 21½ E. 78 vs

2nd Thence South on Second mile at 1060 vs center
of N. frong of Wichita River at 1483 vs N.B.L. of
Section 9 J. H. Gibson and 263 vs west of his
N.E. corner at 1900⁸/₁₀ vs the Second mile
mound two pits N & S with Earth md 2 feet
high between them

3^d Thence South on 3rd mile 1900⁸/₁₀ vs two pits
N & S with Earth md 2 feet high between them

4th Thence South on 4th mile at 1496 vs the South
B.L. of Section 10 J. H. Gibson and 278 vs west
of the S.E. corner of said Survey at 1900⁸/₁₀
vs the 4th mile md. two pits N & S with Earth
mound 2 feet high between them

- 3th Thence South on 5th mile at 1520 hrs a wire fence at 1579 a point on line which is 3935 hrs west of the S.E. corner of Section 150 S K, R. at 1900⁸/₁₀ hrs a set Stone for the fifth mile post
- 6th Thence South on sixth mile at 920 hrs a branch at 1900⁸/₁₀ hrs two pits N & S with Earth md 2 feet high
- 7th Thence South on 7th mile at 1900⁸/₁₀ hrs a mound of Earth and 2 pits in deep branch from which a china marked K 7 hrs S 78° E 13 hrs another marked D 7 M hrs South 58½ W. 46 hrs
- 8th Thence South on 8th mile at 1900⁸/₁₀ hrs two pits and Earth mound 2 feet high between
- 9th Thence South on 9th mile 1900⁸/₁₀ hrs corner two pits N & S with Earth mound between them from which a mes marked D, 9, m. hrs N. 35° W 28 hrs another marked K 9 M hrs N 40¹/₁₀ E, 10 hrs.
- 10th Thence South on 10th mile at 1540 hrs bed of creek in deep long canyon with China trees in it at 1900⁸/₁₀ hrs two pits N & S with Earth md between them in bed of deep canyon running South East from which a mes. marked D 10 M hrs N 32³/₅ W 6²/₅ hrs a bunch of blackberry hrs N 68° E 22¹/₅ hrs
- 11th Thence South on 11th mile 1900⁸/₁₀ hrs to 2 pits and md in head of draw from which a blackberry marked K 11 M hrs N 71¹/₂ E 20 hrs a mes. marked D 11 M hrs N 47 W 27 hrs
- 12 Thence South on 12 mile at 480 hrs crosses canyon another at 1510 hrs at 1800 hrs crosses at mouth of 2 other canyon at 1900⁸/₁₀ hrs two pits N & S and mound on South slope of hill

- 13 Thence South on 13th mile 1900 $\frac{8}{10}$ vrs corner two pits and Earth md from which a mes, marked D 13 M hrs S, 72° W 62 $\frac{3}{4}$ a large Gyp Rock hrs N $41\frac{1}{2}$ W.
- 14 Thence South on 14th mile at 1900 $\frac{8}{10}$ vrs an Earth mound and two pits on N slope of hill from which a mes marked D, 14 M hrs South $78\frac{1}{2}$ W 20 vrs another marked K 14 M hrs N 9° E 95 vrs
- 15 Thence South on 15th mile at 1903 vrs a point on county Line 7800 vrs W of S.E. cor of Cain League at 1900 $\frac{8}{10}$ vrs a large Gyp Stone set in ground marked D 15 M on West Side and K 15 M on East Side from which a mes, marked K 15 M hrs N 26° E 36 vrs on other marked D 15 M hrs N 23° W 81 vrs
- 16 Thence South on 16th mile at 1900 $\frac{8}{10}$ vrs a mound and two pits from which a mes, marked K, 16 M, hrs S 38° E 49 vrs another marked D 16 M hrs N 52 W 7 vrs
- 17 Thence South on 17 mile at 1520 vrs center bed of Geneva fork at 1568 vrs a point on county Line 1812 vrs W of the SW cor of 261 Shrenker Bros of Wichita River at 1900 $\frac{8}{10}$ vrs Earth mound and two pits on North slope of hill from which a mes, 6 in dia hrs N $10\frac{1}{2}$ E 72 vrs tree marked K, 17, M another marked D, 17 M, hrs S 57° W 79 vrs,
- 18 Thence South on 18th mile at 320 vrs cross creek running N. E. at 1900 $\frac{8}{10}$ vrs md & 2 pits from which a mes, marked D 18 M hrs N 64 W 33 vrs another marked K 18 M hrs N 60° E 24 vrs.
- 19 Thence South on 19th mile at 1900 $\frac{8}{10}$ vrs an Earth mound and two pits on South Slope of hill
- 20 Thence South on 20th mile at 460 vrs cross dry brushy creek course East at 1900 $\frac{8}{10}$ vrs mound

and two pits on east slope of hill from which a mes. marked K 20 M hrs N 4° E 80 vrs another marked D 20 M hrs N 13° W 90 vrs

- 21 Thence South on 21st mile at 1450 vrs a faint on county line 7762, vrs W. of N.E. corner of Pual Anderson 1900⁸/₁₀ vrs an Earth md, and two pits, on south side of Deep Canyon,
- 22 Thence South on 22nd mile at 800 vrs cross Canyon at 1400 vrs crosses another Canyon at 1900⁸/₁₀ vrs an Earth md and two pits on N. Slope of hill from which a mes. marked D 22 M hrs South 9³/₄° E 57 vrs another marked K 22 M hrs S 62¹/₂° E 28 vrs
- 23 Thence South on 23rd mile at 1320 vrs cross a branch at 1900⁸/₁₀ vrs an Earth md and two pits from which a mes marked K 23 M hrs S 63° E 19 vrs another marked D 23 M hrs S 37¹/₂° W 26 vrs
- 24 Thence South on 24th mile at 530 vrs a wire fence at 1900⁸/₁₀ vrs gip stone set in ground on west side of high hill and on East side of deep canyon marked on west side D 24 M, on East side K 24 M,
- 25 Thence South on 25th mile at 1900⁸/₁₀ vrs an Earth mound and two pits on West Slope of hill
- 26 Thence South on 26 mile at 1900⁸/₁₀ vrs an Earth mound and two pits in valley from which a mes. marked D 26 M hrs N 33° W 175 vrs another marked K 26 M hrs N 43° E 114 vrs
- 27 Thence South on 27th mile at 1033 cross Dove creek at 1900⁸/₁₀ a mound and two pits,
- 28 Thence South on 28th mile at 1330 vrs cross a branch at 1900⁸/₁₀ vrs a large Stone mound on N slope of hill marked D 28 M on West side and K 28 on East side

29 Thence South on 29th mile at 1650 vs a
branch at 1840 vs another branch at 1900 $\frac{8}{10}$
vs an Earth mound and two pits in fork of two
canyon one coming in from S.E. the other from
S.W. from which a mes marked D29M vs
S 13 W 15 vs a china tree marked K29M vs
N 60 E 30 vs

30 Thence South on 30th mile at 1256 vs crosses
N line of section 237 Blk F. H & J & R R co, and
1323 vs East of its N.W. cor at 1900 $\frac{8}{10}$ vs the
30th mile mound which point is 6956 vs
North and 3223 vs East of the S.W. corner of
Section 241 same Blk for corner 4 pits 8 feet
a post N. S. E. & W with an Earth mound
4 feet high in center of said pits with a mes
post 4 inches square marked F on E, and W,
sides planted in said mound which is the
S. E. corner of Dickens the S.W. corner of
King the N.W. corner of Stonewall and
the N. E. corner of Kent counties

State of Texas county of King
we the under signed surveyors hereby certify
the above and foregoing field notes truly
described the county boundary line between
Dickens and King counties with said lines
and corners as surveyed by us. survey
commenced on the 15th day of February 1892
and finished February the 20 1892 inclusive
County line surveyed by W. R. Norwood
Deputy Dist surveyor of Crosby land District
connections made by C. I. Browder and J. J.
Hale Surveyors of Dickens and King Counties
Given under our hands this the 20 day of
February 1892

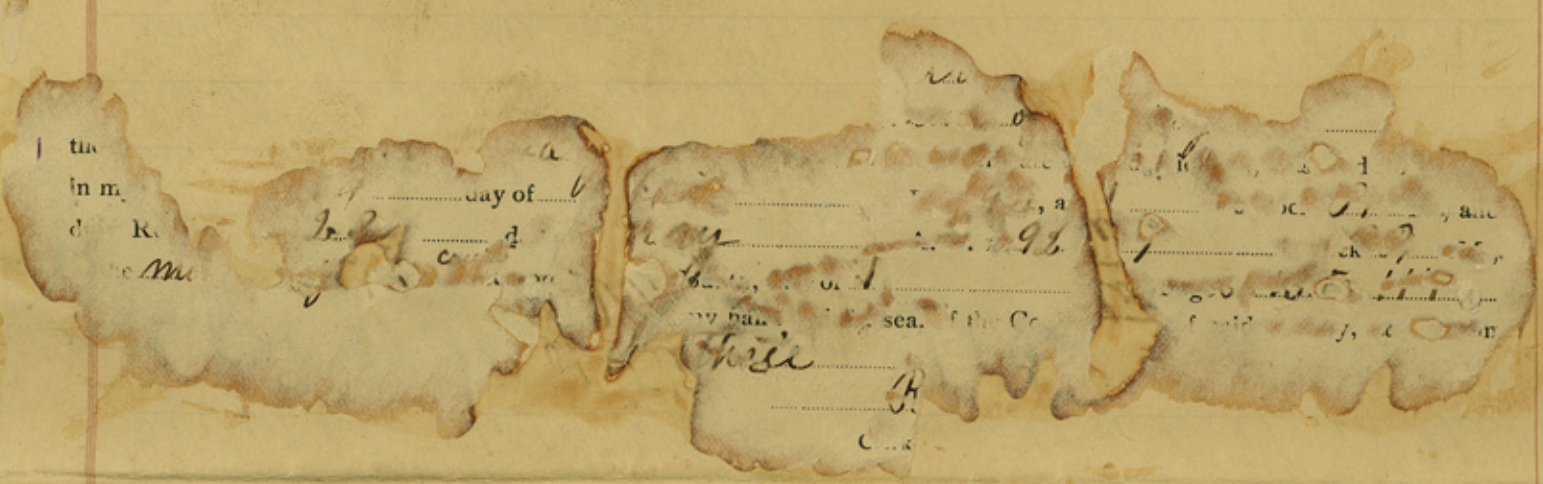
King Co. Bdry. Line # 3

M. L. Hale } chairman
H. R. Oneal } co Line

W R Norwood Dept Dist
sur
C. J. Browder sur King es
J. J. Hale sur Dirkens co

FILED for record April 14 1892 at 1 o'clock PM
and duly recorded the 23 of May 1892 at 9 o'clock
P.M.

R. J. Darnell cler
King es Texas



1632—CERTIFICATE OF TRUE COPY

For Sale by Geo. D. Barnard & Co., Prs., St. Louis. 1-GS-E Class 6

THE STATE OF TEXAS.

County of King } I, R. J. Darnell
Clerk of the County Court of King County, Texas, do hereby certify that
the foregoing is a true and correct copy of the original Instrument which is of
record in minutes of commissioners court in Book 1 on
Pages 113 to 117

of record
now ~~in file~~ in my office.
Given under my hand and the seal of said Court, at Office in Yuthrie
this, the 24 day of May A. D. 1892
ATTEST: R. J. Darnell Clerk.
By _____ Deputy.

FIELD notes Copy
County Line between
King and Dickens
Counties

King Co Bary Line 3

Filed April the 14 1892

at 1 o'clock P.M.

R. J. Darnell c.c.

King Co. Texas

Recorded the 23 May 1892

at 9 o'clock P.M. in the

minute Book 1 Pages

113, 114, 115, 116 & 117

R. J. Darnell c.c.

King Co. Texas

Copy

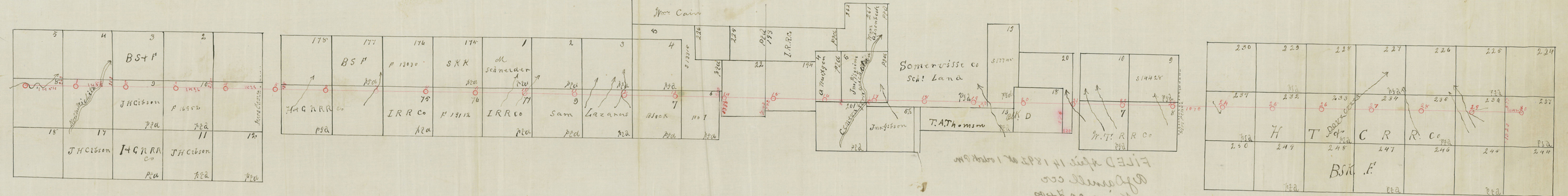
The State of Texas }
County of King } I A. Darnell C.C. in for King Co Texas
do hereby certify that this is a true and correct copy of which
is of records in minute Book 1 on Page 117
Given under my hand and seal of office in Sulphur this
the 24 day of April A.D. 1892
A. Darnell C.C.
King Co Texas

The State of Texas }
County of Dickens }

We the undersigned surveyors hereby certify that the within
that the within and foregoing plat of the County Boundary line
between Dickens & King Counties and its connections with land lines
and corners as surveyed by us is here with truly described by
Survey commenced Feb. 15th A.D. 1892 and finished Feb 20th 1892

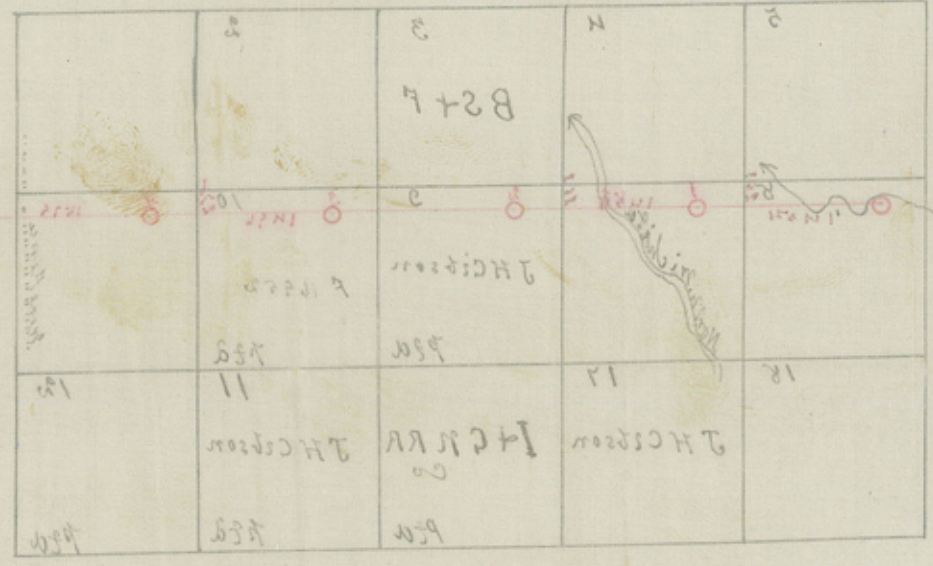
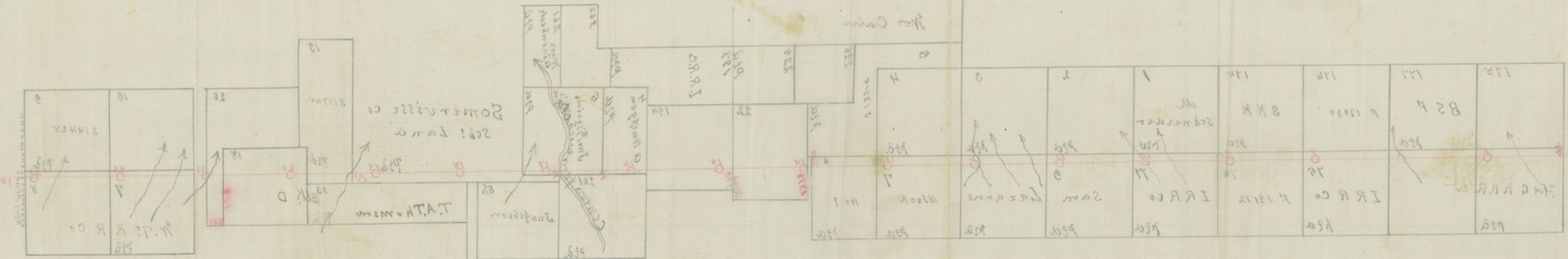
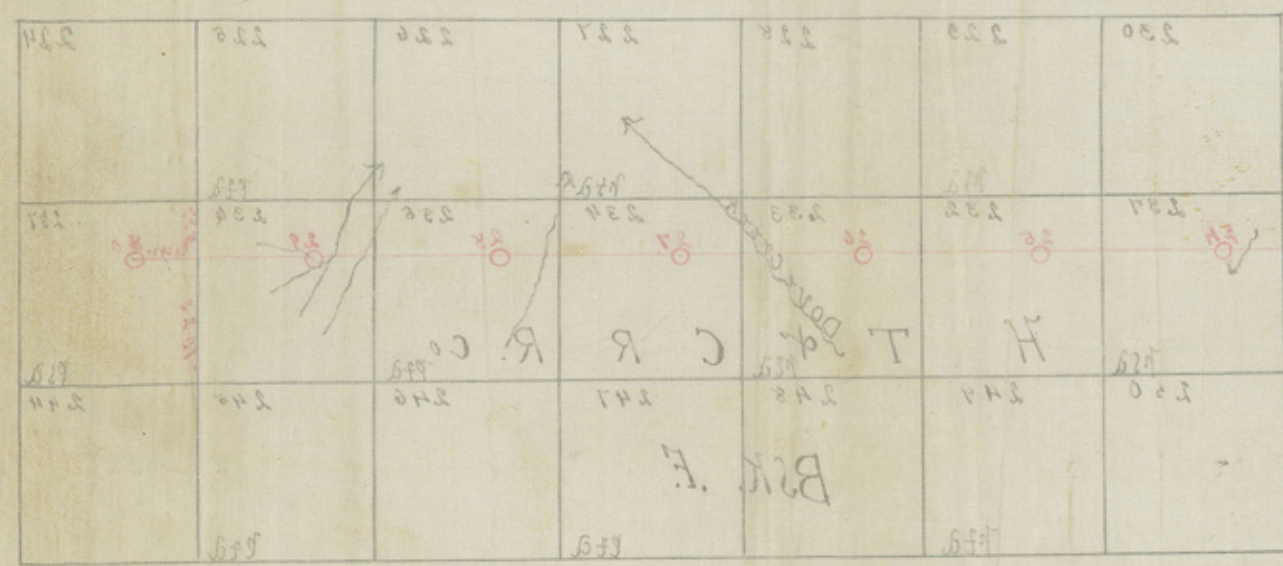
W. B. Norwood, Dept Dist Surveyor Dickens Co
J. J. Hale County Surveyor of Dickens Co
C. D. Browder County Surveyor of King Co

North
Mad. Co. King



FILED April 14 1892 at 1 o'clock PM
A. Darnell C.C.
King Co Texas
1892 at 1 o'clock PM
A. Darnell C.C.
King Co Texas

West. 10 Long



FILED April 14 1891 at 1 o'clock P.M.
 R. J. Darnell ccc
 King Co Txas
 RE corded 23 day of May
 1891 at 9 o'clock P.M.
 P. In minute Book 1 Page
 117
 R. J. Darnell ccc
 King Co Txas

The undersigned surveyors hereby certify that the within
 and corners as surveyed by us in the within copy is correct
 survey commencing at the N.W. 1/4 of Section 20 and
 returning to the same place by the following line
 between Section 18 and 19 and its connection with land line
 that the within and foregoing plat of the County Boundary line
 is correct and true and that the same is correct and true
 to the State of Texas
 County of Hickman

W. B. Darnell
 J. B. Darnell
 County Surveyors of King Co

Handwritten notes in the right margin, including a signature and some illegible text.