

King and Knox
Boundary Line

File 4 1

CONTENTS.

Filed in G. L. Office
5/25/00 County
SCHOOL LAND.

King Co. Bdy. Line 5

..... Acres
..... Section No.

No. Certificate..... Block

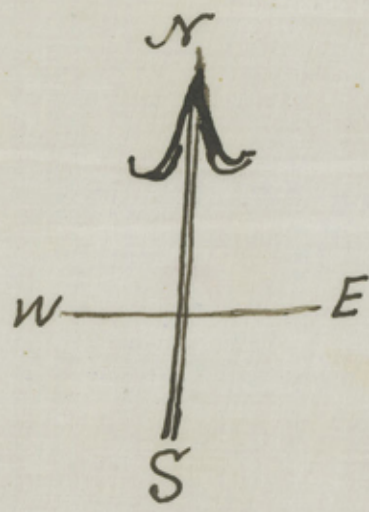
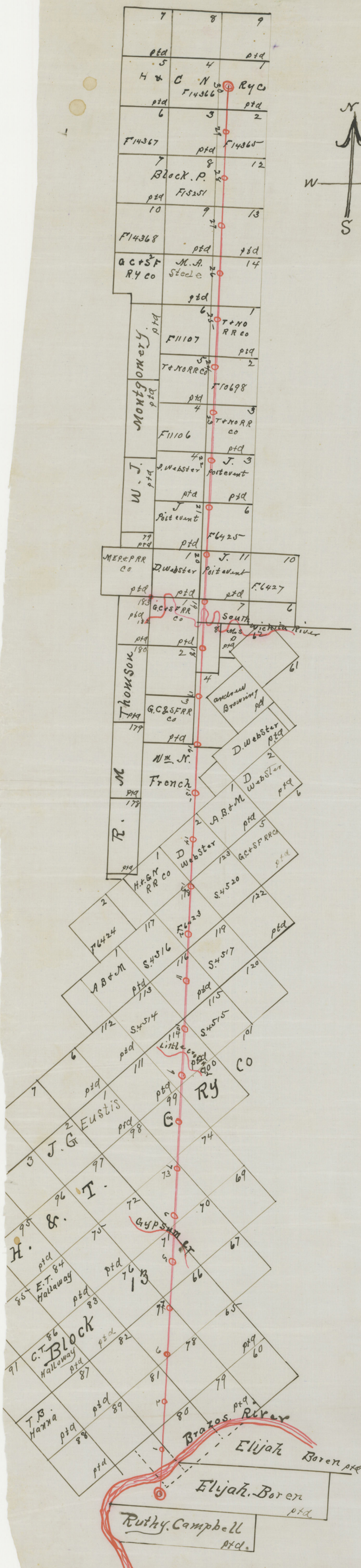
Act April, 1887.

Not Approved -
See within

- No 1—Application and Obligation.
- No. 2.
- No 3.
- No. 4.
- No. 5.
- No. 6.
- No. 7.
- No. 8.
- No. 9.
- No. 10.

Mgl.

County 64924



State of Texas }
 County of King }

I Charles P. Fackitt
 Surveyor of King County do here by certify that
 the foregoing is a true sketch of the County
 boundary line between King and Knox Counties
 and its connections with land lines as
 surveyed by me April 14th 1900-

Charles P. Fackitt
 Surveyor King Co Texas

91 KING CO

56

21

KINGCO



purchased by me April 14th 1800 -
 and is a corner line with lower line
 company line between third and third
 the purchase is a true stretch of the corner
 number of this corner & true of center
 corner of this }
 State of Ohio }
 Charles A. Charles & Charles
 Counter 64926

Charles A. Charles & Charles
 Charles A. Charles & Charles