

Compte 6320

40

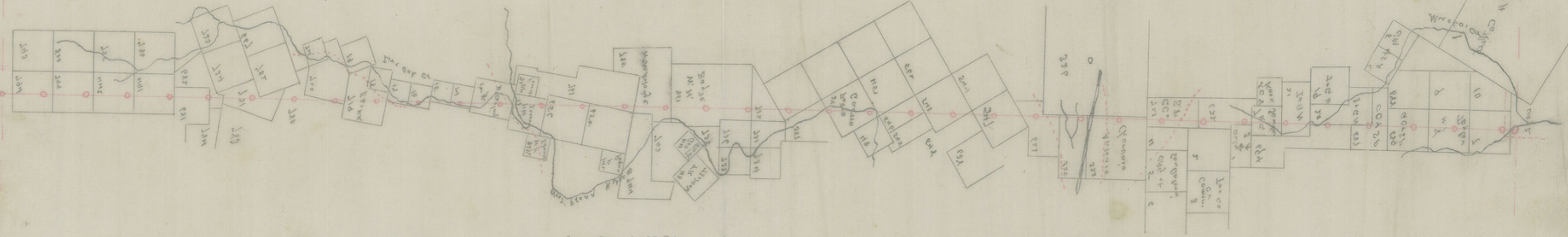
M  
Compte 64935



1

Kinney Co Bdry Lines

1













Field Notes of the East line of Kinney Co. & the West line  
of Uvalde Co. as Surveyed under Contract with the Com-  
missioner's Court of Kinney Co. Texas, & the Commissioner's  
Court of Uvalde Co. Texas. ~ ~ ~ ~ ~

Beginning at a Stone mound, the South West corner of  
Edwards, & the North West corner of Uvalde Co. which is  
also the North East corner of Kinney Co. said mound  
marked. E. Uvalde. 42. J. W. Bennett. from which a Cedar  
marked. E. by N.  $68\frac{1}{4}$  E. 11. varas. a Cedar marked.  $\overline{\text{N}}$  by S  $76\frac{1}{2}$   
W.  $7\frac{3}{4}$  var. ~ ~ ~ ~ ~ Thence S. 1900. var. to a large rock mound.

1 { "for one mile" } from which a Cedar 14 inches in dia by S  
 $74$  W.  $7\frac{1}{2}$  var. mk'd K. do 12 inches dia by S  $65$  E. 5 var. mk'd U.

2 Thence S. 1900. var. to a large rock mound. "for two miles." from  
which a Cedar 12 inches in dia by S.  $44\frac{1}{2}$  W.  $7\frac{1}{2}$  var. mk'd K. do  
12 inches by S.  $26$  E.  $14\frac{1}{4}$  var. mk'd U. ~ ~ ~ ~ ~ Thence S. at 1500. var.

3 a rock mound. on south side of Road from Monteb. to Live  
Oak Valley. at 1900. var. a large rock mound. "for three miles."  
from which a Cedar by S.  $46\frac{1}{2}$  W.  $6\frac{1}{4}$  var. mk'd K. do 12 inches in  
dia by S.  $70$  E.  $6\frac{1}{4}$  var. mk'd U. ~ ~ ~ ~ ~ Thence S. 1900. var. to a large

4 stone mound. { for four miles } from which the centre of the  
Upper bluff at Cherry Springs on Live Oak Creek by N.  $69\frac{1}{4}$  W.

5 Thence S. 1900. var. to a large rock mound. "for five miles." from  
which a Live Oak. 4 in dia by N.  $51\frac{1}{2}$  E.  $3\frac{1}{2}$  var. mk'd U. a  
Live Oak  $4\frac{1}{2}$  in dia by S.  $4\frac{1}{2}$  W. 16. var. mk'd K. from this mound

the S. W. cor of Survey No 681. by S. 45 var. & W.  $38\frac{1}{2}$  var. ~ ~ ~ ~ ~

6 Thence S. 1900. var. to a large rock mound. on the south side  
of a drain in the point of Three Hills "for six miles." from  
which a Live Oak 12 in dia by N.  $58$  E.  $59\frac{1}{2}$  var. mk'd U. ~ ~ ~ ~ ~

7 Thence S. 1900. var. to a large rock mound. on south east side  
of a high Hill. "for seven miles." ~ ~ ~ ~ ~ Thence S. at 1520. var.

8 a Road. at 1900 var. a large rock mound. "for eight miles."



- 9 a red spot in the West end of a cliff of rocks. on top of a ridge  
 brs S. 4. W.      Thence S. 1900. rs to a large dirt mound in  
 open hollow. near Live Oak Creek. "for nine miles." from  
 which a Live Oak 6 in dia brs S. 3. W. 53. rs. mhd K. a Live  
 Oak 3 in dia brs N. 66 1/2 E. 36. rs mhd U.      Thence S. at 448  
 rs a point on line the N. E. cor of Survey No 17. in the name  
 of the heirs of C. Smiths. brs W. 14 rs. at 1345 rs road up Live  
 Oak. at 1475. rs centre of Live Oak Creek at 1900. rs a large
- 10 dirt mound. in Live Oak Valley. "for less miles" from which  
 a Live Oak 14 in dia brs N. 86 1/2 W. 12 1/2. rs mhd K. an Olive  
 14 in dia brs N. 82 1/2 E. 10 1/4 rs mhd U.      Thence S. at 300. rs  
 centre of Live Oak Creek. at 660. rs. road. at 673. rs dirt mound  
 at 860. rs edge of Live Oak Creek. remaining due S. at 1800. rs  
 centre of Creek. at 1900 rs a large mound. on west bank of  
 Creek. Creek turns S. E. "for eleven miles."      Thence S. at
- 11 1154. rs dirt mound on side of Road up Live Oak. Creek.  
 from Brackett. at 1618. rs Live Oak Creek running W. at 1900  
 rs a large dirt mound "for Twelve miles". from which a  
 12 Farmer's House. brs due West. a mesquite 14 in dia brs S. 85 1/2 W.  
 36 1/2 rs mhd. K. a mesquite 13. in dia brs N. 33 E. 47 1/2 rs.  
 mhd. U.      Thence S at 902. rs a dirt mound on the  
 South side of the Port Clark. & M'Karritt Road. at 1000. rs Live  
 Oak Creek. at 1271. rs centre of West Nueces River. at 1900. rs
- 13 a large dirt mound. "for thirteen miles." from which a Live  
 Oak 18 in dia brs S. 11. E. 17 1/4 rs mhd K. a Live Oak 6 in dia  
 brs S. 43. E. 33 1/2 rs mhd U. from this mound the S. E. cor of  
 preemption Survey No 83. B. S. Powell. brs S. 68. W. 257. rs.  
 Thence S 1900. rs to a large rock mound. at the foot of a Hill
- 14 "for fourteen miles".      Thence S. at 180. rs a large rock  
 mound on top of a Hill north of the Pogue settlement  
 at 1900. rs. a large stone mound near foot of a Hill

M<sup>2</sup>



- 15 "for Fifteen miles." from which a Live Oak 4 in dia brs S 43 E  
9 1/4 ers mlid U, an Elm 3 in dia brs S. 17. W. 27 3/4 ers. mlid K.
- 16 Thence S. 1900. ers to a mound in the bed of the West Nones  
River. "for Sixteen miles." from which a Sycamore brs S 54. W.  
67. ers mlid K. a Sycamore brs N. 23. E. 25 1/4 ers. mlid U.       
Thence S. at 1120. ers bluff at south side of West Nones. River at  
1900. ers a large rock mound. near head of a drain. "for Seven
- 17 .teen miles." from which Pagare bluff brs N. 20. W. a sharp  
Peak brs N. 15. E.      Thence S. 1900. ers to a large rock
- 18 mound." for Eighteen miles." from which the centre of the  
East side of Turkey Creek. Mt brs N. 81. W.      Thence S. 1900
- 19 ers. to a large rock mound "for Nineteen miles." from which a  
Live Oak 18 in dia brs S. 37 1/2. E. 6 1/4 ers mlid U. a Live Oak  
10 in dia brs N. 85. W. 2 1/2 ers mlid K.      Thence S. at 1420  
ers centre of West Nones River. at 1900. ers a large rock mound.
- 20 on the bank of the Nones. "for Twenty miles." from which a  
leaning Live Oak. 14 in dia in a cluster of four brs N. 54 3/4 W.  
20. ers mlid K.      Thence S. from 1080. to 1460. ers. in bed
- 21 of West Nones. 1900. ers to a Stone mound. "for Twenty-one miles"  
from which a Cedar 10 in dia brs S. 5 ers mlid U. on the East.  
40 K. on the West.      Thence S. at 220. ers. centre of West  
Nones River. at 359. ers point on line. the S. cor of Survey No  
28 in the name of Pedro Gavna. brs E. 102. ers. at 400. ers. top  
of Barilla Bluff. a rock mound. at 1900. ers. a large dirt
- 22 mound. "for Twenty-two miles". the East end of the highest  
Peak of the Anacacho Mts brs S. 11. W. the East centre of Turkey  
Creek Mt. brs N. 46 1/2 W.      Thence S. 1900. ers to a large
- 23 dirt mound. "for Twenty-three miles." from which the centre  
of Turkey Creek Mt brs N. 41. W.      Thence S. 1900. ers to a  
large rock mound. from which a Live Oak 24 in dia brs  
S. 71. E. 29 1/2 ers mlid U. a Live Oak 18 in dia brs S 60. W



- 24 371. ars mld K. "for twenty-four miles." from Thence S. at 212. ars  
Road to Barrillo Oaks. 1900. ars to a large rock mound. "for
- 25 twenty-five miles." from which a Hackberry 4 in dia brs N. 63  
E. 49 1/2 ars mld U. a Live Oak 18 in dia brs S. 34 1/2 W. 152 1/2  
ars. mld K. from Thence S. at 864 1/2 ars road to Turkey Creek  
Mts. at 1180. ars North Fork of Turkey Creek. at 1560. ars. South  
spring of Turkey Creek. at 1900. ars a large dirt mound.
- 26 "for twenty-six miles." from which a Mesquite 14 in dia  
brs N. 57. E. 14 ars. mld U. a Mesquite 6 in dia brs N. 67 1/2 W.  
18 3/4 ars. from Thence S. at 569 1/2 ars. Centre of Rail Road  
Track. from this point a small painted Stake on south  
side of Track. No 5903. +. 4. 7. brs N. 71 1/4 E. 57. ars. on each  
side of track at this point two large dirt mounds. at  
1260. ars. Port Clark to San Antonio Road at 1900. ars a large  
dirt mound. in Vinton James Pasture. "for twenty-seven  
miles." from which a Mesquite 12 in brs N. 35 1/2 W. 9. ars.  
mld. K. a Mesquite 10 in dia brs N. 36 1/2. E. 38 1/2 ars mld U.
- 28 Thence S. 1900. ars to a dirt mound. "for twenty-eight miles."  
from which a Mesquite brs S. 68 1/2 W 26 1/2 ars. mld K. a  
Mesquite 4 in dia brs S. 37 1/2 E. 37 1/4 ars mld U. from  
Thence S. at 755 1/2 ars road from Kleine Station to Flowers
- 29 Ranch. at 1900. ars a rock mound. "for twenty-nine miles."  
a small mountain at the S. E. side of Anaschara Mts brs N  
72. W. Wind Mill at Vinton James Ranch. brs S. 11 1/4. W. from
- 30 Thence S. 1900. ars a large rock mound. "for thirty miles." from  
which a Live Oak. 24 in dia brs N. 18. W. 14 ars mld K. a  
Live Oak 10. in dia brs S. 32 1/2 E. 42 ars mld U. from  
Thence S. at 353 ars a point on line. from which a stone  
mound the S. W. corner of Survey No 1. in the name of City  
of San Antonio brs N. 72 1/2 E. 60. ars. at 1000. ars Muello Creek  
at 1900. ars a large stone mound. "for thirty-one miles." from



white the center of a rock Bluff on East Muello Creek brs N. 87 1/2 E.  
 two Spanish daggers brs S. 4. E. 14 ars. m lid U. ~~~~~  
 Thence S. at 1010. ars centre of Muello Creek at 1800. ars Muello Creek  
 again. at 1900. ars a large dirt mound. "for thirty, two miles,"  
 from which are Oaks 4 in dia brs S 87. W. 2 1/4 ars m lid K. a Live  
 Oak. 4 in dia brs S. 69. E. 3 1/4 ars m lid U. ~~~~~ Thence S. at 1900.  
 ars a rock mound. on side of a ridge. "for thirty, three miles,"  
 from which a rock cliff on S. E. edge of Anacacha Mts brs N.  
 15. W. ~~~~~ Thence S. 1900. ars a large rock mound. near  
 foot of a Hill. "for thirty, four miles," a Wind mill at Pin-  
 o Lago Ranch. brs S. 3 1/4. E. a lone Elm in the bed of Muello Creek  
 brs S. 17 1/2 E. ~~~~~ Thence S. 1900. ars to a large rock mound.  
 "for thirty, five miles," a lone Live Oak brs S 39 1/2 E. a black  
 bush brs S. 33. W. 11 1/4 ars m lid K. ~~~~~ Thence S. 1900. ars to  
 a large dirt mound with a post in centre m lid K. U. Z. M.  
 with a large ditch around it. for the South East corner of  
 Kirney. <sup>or</sup> South West corner of Uvalde. <sup>or</sup> the N. W. cor of Gray-  
 walla. Co. <sup>or</sup> the N. E. corner of Maverick County. from which  
 a Cat Claw 3 in dia brs S. 61 1/2 E. 6 1/4 ars. m lid Z. a Hackberry  
 6 in dia brs S. 35 1/2 W. 18 1/4 ars m lid M. a Cat Claw 4 in dia  
 brs N. 60 W. 33 ars m lid K. a Mesquite 8 in dia brs N. 31 1/4 E.  
 41. ars m lid U. from this mound the most Eastern corner of  
 Survey No 1. in the name of E. A. Cattell. brs W. 1192. ars. <sup>or</sup> S. 520. ars  
 Variation 9:15. East.

Bearings marked K. U Line marks ≡	}	Chain Carriers { Sam Evans Meguil Patino
--------------------------------------	---	---

We. H. C. Petty Special Surveyor for Kirney Co. <sup>or</sup> J. W. Bennett  
 as Surveyor of Uvalde Co. do hereby certify that the above <sup>or</sup>  
 foregoing field notes are truly described. the the marks  
 boundaries. both natural & artificial, are truly described <sup>or</sup>



That said work was done by us in the field, on September 1. 2. 3. 5. 6. 7. 8. A. D. 1887.

A. C. Petty, Special Surveyor Kinney Co. Tex  
J. W. Bennett. Co. Surveyor Uvalde Co. Tex

Examined & Approved in Open Court, this 23<sup>d</sup> day of Sept 1887.

Attest.

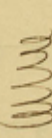
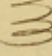
J. R. Robinson

Co. Judge Ky Co.

W. H. Rogien

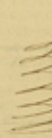
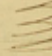


C. C. Kinney Co.

The State of Texas  J. W. H. Rogien Clerk in <sup>and</sup> for  
County of Kinney  said County, certify that the foregoing  
Field Notes of the County line between Kinney & Uvalde Counties,  
with its certificate of authentication was filed for Record in my  
Office the 23<sup>d</sup> day of September 1887, at 2. O'clock P.M. in duly  
Recorded the 8<sup>th</sup> day of October 1887, at 2. O'clock P.M. in the  
Records of said County, in Vol B. # 4 on pages 26, 27, <sup>and</sup> 28.  
Witness my hand <sup>and</sup> the Seal of the County Court of said County,  
at Office in Brackett Texas, the day <sup>and</sup> year last above written,

W. H. Rogien

C. C. Kinney Co.

The State of Texas   
County of Kinney  J. W. H. Rogien Clerk of the County Court of  
Kinney County, do hereby certify, that the foregoing Field Notes  
<sup>as</sup> plat hereto attached, is a true <sup>and</sup> correct Copy of the original  
Field Notes <sup>as</sup> Plat of the County line between Kinney & Uvalde  
Counties Texas, as appears of Record in my Office. Given  
under my hand <sup>and</sup> Seal of Office this the 10<sup>th</sup> day of October 1887

W. H. Rogien

C. C. Kinney Co.

M4A



3  
1

Kinney Co Entry Line 1

Field Notes of the County Line

Between

Kinney & Warden Counties

Filed Oct. 12<sup>th</sup> 1887

Examined and found to be of  
no value for completion of Ab-  
stract because no course or  
distance given from corners  
of surveys through which the  
Co line passes.

corrected plat filed Nov 12/87

Examined, approved and  
affixed Dec 22/87  
G. W. Beaumont

Abstract Corrected and Copy  
for'd Coupl<sup>r</sup> July 13/88  
Beaumont

counties  
64945

LW