

*Block approved and
applied Dec 27/88
Lawrence*

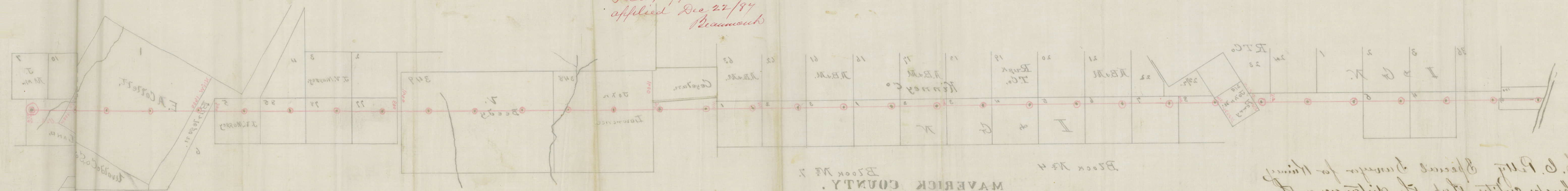
I, H. C. Petty Special Surveyor for Kinney Co. do hereby certify that the distances on the above sketch from the corners of the surveys through which the line of Kinney and Maverick Co's pass are true and correct from connections made on the ground and from the records of the county Surveyor records of Kinney Co.

Block No. 4
MAVERICK COUNTY.
Block No. 7.

Given under my hand at Brackett this
the 11th of November A.D. 1887. H. C. Petty Special Surveyor of
Kinney Co. Texas

Filed, approved
and certified
Dec 27/94
Board

17

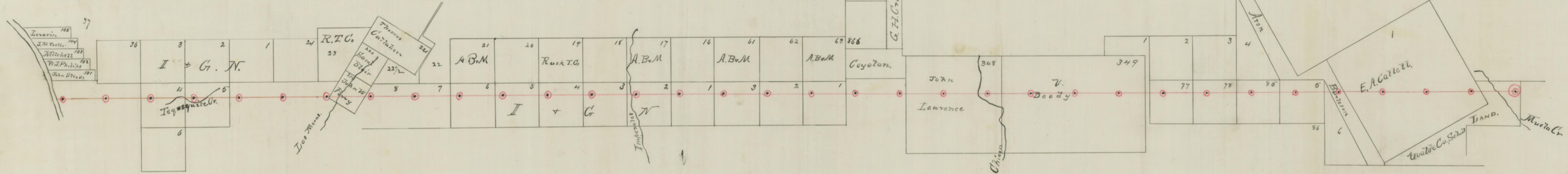


the 11th of November A.D. 1887. H. B. Peltz, Special Surveyor of
Hines Co. Texas
When these maps were at 13 rack 11-11
from the records of the county surveyors records of
Hines Co. Texas
which the line of Hines and Maverick Co's line are
above stated from the corner of the survey, though
I do hereby certify that the distance on the

Hines Co. Survey Line No. 13

County 64917

KK



Handwritten note on the right margin, partially illegible.

Field Notes of the South Line of Kinney Co. to the North
Line of Maverick Co. Texas.

Beginning at a dirt mound, from which a Cat Claw
3 in dia brs S. 61 $\frac{1}{2}$ E. 6 $\frac{3}{4}$ ars marked Z. a Hackberry 6 in
dia brs S. 35 $\frac{1}{2}$ W. 18 $\frac{3}{4}$ ars. marked M. a Cat Claw 4 in
dia brs N. 60 W. 32 ars. Mked K. a Mesquite 8 in dia brs
N. 31 $\frac{1}{4}$ W. 41 ars. marked U. said mound being the S. E.
corner of Kinney, the S. W. corner of Woods, the N. W. cor-
ner of Zavalla. to the N. E. corner of Maverick Counties.
said corner lying 520. ars N. to 1192 ars East of the most
Eastern corner of Sarvey No 1. in the name of E. A. Cattell.
Thence W. at 780. ars Centre of Murrells Creek. at 1900. ars
a large dirt mound. "for one mile." from which a
mesquite 10 in dia brs S 54 W. 16 $\frac{1}{4}$ ars. mked M. a mesquite
8 in dia brs N. 66 $\frac{1}{2}$ W. 36 $\frac{1}{2}$ ars mked K. ~~~~~
Thence W. 1900. ars a large dirt mound "for two miles."
from which a mesquite mked M. 12 in dia brs S. 20 $\frac{1}{2}$ W.
78 $\frac{1}{2}$ ars. a mesquite 12 in dia brs N 40 W. 25 $\frac{3}{4}$ ars. mked K.
Thence W. 1900. ars to a large dirt mound "for three miles."
from which the most Eastern point of the Amaracho Mts brs
N. 11. E. a Spanish dagger brs N. 24 $\frac{1}{2}$ E. 32 ars mked K. ~~~~~
Thence W. at 300 ars Road from Flowers Ranch to Eagle
Pass. at 1900 ars a large dirt mound. "for four miles." from
which a mesquite 3 in dia in a cluster brs S 6 $\frac{1}{2}$ E. 14 $\frac{3}{4}$ ars.
Mked M. a mesquite 3 in dia brs N 68. W. 12 ars mked K. ~~~~~
Thence W. 1900. ars a large dirt mound. "for five miles." from
which a mesquite 12 in dia brs N. 60 $\frac{1}{4}$ E. 16 $\frac{1}{2}$ ars mked K. a
mesquite 8 in dia brs S. 80 $\frac{1}{2}$ E. 49. ars. mked M. ~~~~~
Thence W. 1900. ars a large dirt mound. "for six miles." from
which a mesquite 12 in dia brs N. 63 $\frac{1}{2}$ W. 37. ars mked K. a
mesquite 3 in dia brs S. 17. E. 59 $\frac{1}{2}$ ars. mked. M. ~~~~~

Thence W. 1900. was a large dirt mound. "for seven miles." from which a mesquite 8 in dia brs S. 37 E. 10 ars. m lid M. a Cat Claw 4 in dia brs N. 70 W. 4 7/2 ars m lid K. ~~~~~

Thence W. 1900. was a large dirt mound. "for eight miles." from which a mesquite 10 in dia brs S. 37 E. 32 1/2 ars m lid M. a mesquite 18 in dia brs N. 33 E. 20 1/2 ars m lid K. ~~~~~

Thence W. 1900. was a large dirt mound. "for nine miles." a lone tree in the centre of the Anacacho Mts brs N. 4 1/2 E. a high lone cliff in Anacacho Mts brs N. 13. W. ~~~~~

Thence W. 1900. was to a dirt mound. "for ten miles." from which the Wind Mill at Waters & Letto Ranch. brs S. 10. E. a small round hill S. W. of the Anacacho Mts brs N. 25 1/2 W. ~~~~~

Thence W. 1900. was a large dirt mound. "for eleven miles." from which a round hill S. W. of the Anacacho Mts brs N. 9 1/2 E. ~~~~~

Thence W. 1900. was a large dirt mound. "for 12 miles." from which a mesquite 10 in dia brs S. 51 1/2 E. 5 3/4 ars. m lid M. a mesquite stump brs N. 66 1/2 E. 14 3/4 ars. ~~~~~

Thence W at 463 ars centre of Chiron Creek. at 1900. was a large dirt mound. "for thirteen miles." near foot of a small ridge west of the Chiron Creek. ~~~~~

Thence W. at 143 ars. a Road. 1900. was a large dirt mound. "for fourteen miles." from which two daggers m lid M. brs S. 45 3/4 W. 45 3/4 ars. a dagger brs N. 61 1/2 W. 26 1/2 ars m lid K. ~~~~~

Thence W. 1900. was a large dirt mound. "for fifteen miles." from which the little Las Moras Mt brs N. 5 W. the highest point of Parker Creek Mt brs N. 26 1/2 E. ~~~~~

Thence W. at 716 ars Road from Woodralls Ranch to Eagle Pass. at 1900. was a large dirt mound. "for sixteen miles." from which a mesquite 5 in dia brs S. 53 1/4 E. 26 ars m lid M. the little Las Moras Mt brs N. 2. W. ~~~~~

Thence W. 1900. was a large dirt mound "for seventeen miles." from which a high point in the

KK³

Anacacho Mts. to N. 44 E. the most Western point of the
 Anacacho Mts. to N. 40 E. — Thence W. at 26 1/2 ars. centre
 of track of Eagle Pass Rail Road. The centre of Curve No 6
 to S. 1 1/2 E. 31 1/4 ars. on each side of track at this point large
 dirt mounds, a Telegraph Post mtd M. to S. 30. W. 15 1/4
 ars. a Telegraph Post. mtd K. to N. 12 W. 45 1/4 ars. at 1080. ars
 old Port Clark. & Eagle Pass Road. 1900. ars a large dirt
 mound. "for Eighteen miles." from which a mesquite 5 in
 dia to N. 3 1/4 E. 23 ars. mtd K. a mesquite 7 in dia to S
 22. E. 65. ars. mtd M. — Thence W. 1900. ars to a large dirt
 mound "for Nineteen miles." from which a mesquite 3 trunks
 to N. 4 1/2 W. 66. ars mtd K. a mesquite 3 trunks to S. 35 1/2 E.
 28 1/4 ars mtd M. — Thence W. 1900. ars to a large dirt
 mound. "for twenty miles." from which the little Las Moras
 Mt. to N. 10 1/2 E. — Thence W. at 295. ars. crossed. Imperiales
 Creek. 1900. ars a large dirt mound. "for twenty, one miles."
 from which a mesquite 8 in dia to N. 31. E. 46 1/2 ars mtd K.
 Thence W. 1900. ars a large dirt mound. "for twenty, two miles".
 from which a mesquite 14 in dia to N. 16. W. mtd K. 40. ars.
 a mesquite 6 in dia to S. 70. E. 16 1/2 ars mtd M. —————
 Thence W. 1900. ars a large dirt mound. "for twenty, three miles".
 from which a mesquite 10 in dia to N. 44. E. 33 ars mtd K
 a mesquite 4 in dia to S. 31 E. 20 ars mtd M. —————
 Thence W. 1900 ars a large dirt mound. "for twenty, four
 miles." from which a mesquite 3 trunks to N. 62 1/2 E. 10 1/4 ars.
 mtd K. a mesquite 8 in dia to S 8 1/2 W. 18 1/2 ars mtd M.
 Thence W. 1900. ars to a large dirt mound. "for twenty, five
 miles". from which a mesquite 5 in dia to N. 55 1/4 W. 29 1/2
 ars mtd K. a three pronged mesquite 3 in dia to S. 10 E.
 46 1/4 ars. mtd M. — Thence W. 1900. ars a large dirt mound.
 "for twenty, six miles." from which a mesquite 8 in dia to

for Kinney Co. do hereby certify, that the above & foregoing
Field Notes, are true & correct, that the boundaries & marks
both natural & artificial are truly described, & that the work
was done by me in the field, on the 9. 10. 12. 13. 14th September
A. D. 1887.

H. C. Petty.

Special Surveyor for Kinney Co. Tex

And I further report to the Court, that having arrived at
the S. E. corner of Kinney & N. E. corner of Maverick County,
at the time appointed, the County Surveyor of Maverick County,
or any Surveyor whatever from said County, failed to meet me
therefore I proceeded to run said line by myself.

H. C. Petty.

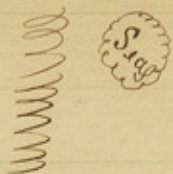
Special Surveyor for Kinney Co. Tex

Examined & approved in open Court, this 23rd day of Sept. 1887.

Attest.

W. H. Ragin

C. C. Kinney Co.



J. A. Robinson

Sec. Judge. Ky Co.

The State of Texas & J. W. H. Ragin County Clerk in & for said
County of Kinney & County, certify that the foregoing Field
Notes, of the County Line between Kinney & Maverick Counties
with its certificate of authentication was filed for Record in my
Office the 23rd day of September A. D. 1887, at 2. O'clock P. M. &
duly Recorded the 7th day of October A. D. 1887, at 5. O'clock P. M.
in the Records of said County in Vol. B. # 4 on pages 22, 23, & 24
Witness my hand & the Seal of the County Court of said County,
at Office in Brackett Texas, the day & year last above written.



W. H. Ragin

C. C. Kinney Co

S. 21. E. $27\frac{1}{4}$ ars. mld M. a Mesquite 2 in dia brs N. 3. W. $5\frac{1}{4}$ ars.
 mld. K. Thence W at 670. ars. Road to mouth of Las
 Moras Creek. at 1530 ars centre of Las Moras Creek. 1900. ars
 to a dirt mound. "for twenty Seven miles." from which a
 mesquite 10 in dia brs S. 5. W. $14\frac{1}{4}$ ars mld M. a Mesquite 2
 in dia brs N. $17\frac{1}{2}$ W $23\frac{3}{4}$ ars mld K. Thence W. at 355 $\frac{1}{2}$
 ars. point on line. the S cor of Survey no 24. ²⁰ the W. cor of
 Survey no 23. in the name of the R. S. la. brs N. 315. ars. at
 1900. ars a large dirt mound from which a Mesquite 2
 in dia brs N. $67\frac{1}{2}$ E. $19\frac{1}{4}$ ars mld K. a mesquite 3 in dia
 brs S. 23. E. 60. ars. "for twenty Eight miles." Thence W.
 1900. ars a large dirt mound. "for twenty Nine miles." the
 Mesquite Ranch brs N. $41\frac{1}{2}$ W. about 400. ars.
 Thence W. at 1410. ars Mesquite Creek. 1900. ars a large
 dirt mound in a Valley. "for thirty miles."
 Thence W. at 420. ars. centre of Mesquite Creek. at 800. ars
 Creek again 1900. ars a large gravel mound. on side of a
 drain. "for thirty one miles." Thence W. 1900. ars to a
 gravel mound for "for thirty two miles." from which a
 Spanish dagger. mld K. brs N. 27. E. 14 ars. Thence W. at
 1617. ars. a point on line. at 1833 ars Road. from Dixie to
 Eagle Pass. at 1900. ars a large dirt mound. with a rock in
 centre marked K. M. from which a Mesquite 24 in dia
 mld K. brs N. $22\frac{1}{2}$ E. $13\frac{1}{2}$ ars. a Mesquite 16. in dia brs S $7\frac{1}{2}$
 W. $44\frac{1}{4}$ ars. mld. M. 33 miles. Thence W. 204 ars to
 a large Pecan tree on the banks of the Rio Grande. River.
 mld. M. K. Total distance of line 33 miles. 204. varas,
 Variation 9. 15. E.
 Bearings mld. K. M. }
 Line marks. ≡ } Chain carriers { Some Cross
 } } Maguil Palino

J. H. C. Petty Special Surveyor

KK⁵

The State of Texas } J. W. H. Regin Clerk of the County Court of
County of Kinney } Kinney County. do hereby certify that the
foregoing Field Notes & plat thereof attached is a true &
correct copy of the original Field Notes & plat of the County
Line between Kinney & Maverick Counties Texas. as appears
of Record in my Office. Given under my hand & seal of
Office this the 10th day of October 1887.

W. H. Regin
C. C. Kinney Co

2-1

Kinney Co Bary Line 13

Field: No Co. of County Line

Balance

Kinney & Maverick Counties

Filed October 12th 1887

Examined Oct 25/87 and found
to be of no value because of no
distance nor course given from
corners of surveys through which
the Co line passes.

Corrected Plat filed No 12/87

Examined, and approved
Dec 22/87 G. W. Beaumont

Abstract Corrected and Copy
furnished Campbell
Jan'y 13th 1888 Beaumont