

Finnox Cou.  
Boundaries

12.3

Via Wellington Connection  
from N W Cor Baylor  
Co. (3)

See King Co Entry Line  
Finnox Co Entry Line 34.5.55

The East, South  
are definite and  
cannot be adopted

(4) The West City  
April 15<sup>th</sup> 1874

See Base line  
King + Cattle

North boundary line  
approved & adopted

South boundary line  
approved & adopted  
12-74 (5150)

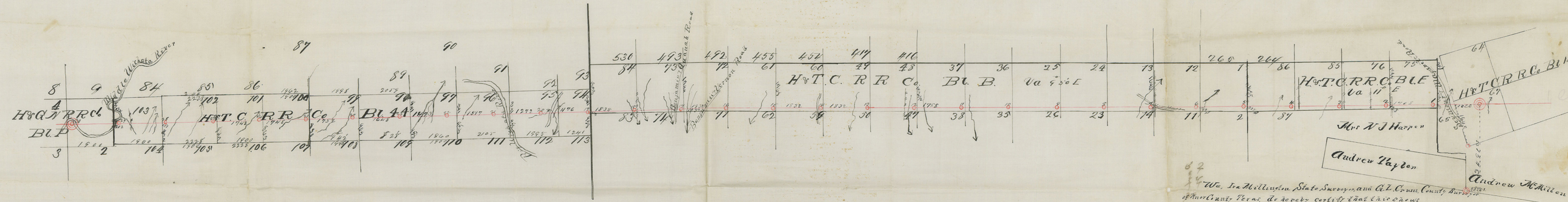
Only North boundary app  
shading line side

Counter  
65019

Not the line then,  
Feb 1874



040  
32  
608  
8  
48.64



We, Ira Millington State Surveyor, and G. L. Crum, County Surveyor  
 of Knox County, Texas, do hereby certify that this shows  
 the true and correct position of the above  
 Base and County line, and its connections  
 as represented thereon, as Surveyed by us  
 on the ground  
 October 2<sup>nd</sup> 1891  
 Ira Millington, State Surveyor.  
 G. L. Crum, County Surveyor  
 Knox County Texas.

Knox Co Survey

Sketch showing  
Part of Ball Line from  
Cor Baylor West.

91  
October 5th 1821

at the place where  
the Ball Line crosses  
the line of the  
Circuit Court of  
the State of  
Mississippi

Knox County Texas  
G. V. G. Survey

The Mississippi River



Knox  
1821-1891

65023

State of Texas  
Knox County

Field Notes for Base Line and County Boundaries, Beginning at the N.W. corner of Baylor County, Said corner identified by large sand stone Rock 3 feet long facing North and South situated in valley of South Beaver Creek, marked  $\begin{matrix} N.E. \\ K \end{matrix}$  |  $\begin{matrix} N.W. \\ B \\ \times \times \times \end{matrix}$  on south side and H. W. on the North side. a large Hackberry tree brs  $N 25^{\circ} E$  138 vrs and another brs  $N 21^{\circ} E$  131 vrs. and a round stone mound brs  $S 57^{\circ} W$  112 vrs. also by pond and ~~small~~ branch on division line between Baylor and Wilbarger Counties and by stone mound for S.W. corner of 1280 acre Survey for A. M. Miller said <sup>with</sup> corner identified by Bearing trees called for in Field Notes for said Survey, Not having any calls for material objects for the S.W. corner of Survey No. 67 <sup>Block 18</sup> H. & T. C. Ry. Co. it was not identified I had no Field Notes for Survey No. 64, 65, and 66, H. & T. Ry. Co.; Surveys Block 18. The calls sent me for S.W. corner of said Survey No. 67 are not in agreement with the claimed corner on the ground, (see sketch)

Survey of Line commenced September 22<sup>d</sup> A.D., 1891 magnetic variation  $7^{\circ} 40' E$

Beginning at said Stone as indicated in above Field Notes the same being the N.W. corner of Baylor County.

Thence West ~~at~~

- |        |   |
|--------|---|
| var as |   |
| 200    | cross small ridge   |
| 500    | small valley  |
| 625    | branch runs N.E. into South Beaver Creek  |
| 1066   | cross division line between Surveys No. 65 and 67 Block 18 H. & T. C. R.R. Co., <sup>from this point</sup> then S.W. corner of sd. 67 as claimed on the ground is $S 18^{\circ} E$ 1647 vrs |

Varas

- 1240 cross Deymour and Margaret road course N & S
- 1344 branch runs N. E. at 1707 vs cross division line between survey st. 65 Block 138 75 in Block <sup>ES</sup> E & C corner of 8<sup>th</sup> 75 bis South 125 vs
- 1900.8 one mile stone a large flat rock planted on west side of small branch East side of rock marked B. L. 1 M edges facing North and South, pits East & West

2<sup>d</sup> mile Base line in Foard County Texas

- Begin at one mile stone Thence west (Transit Line)
- cross mesquite flat to 1700 vs N. E. corner of 8<sup>th</sup> 76 bis North 125 vs
- 1708 cross East side of Survey 4: 76, Block F, H & I C Ry Co Survey
- 1710 Road 1720 wire fence East side of Parish pasture

- 1900.8 2<sup>d</sup> mile monument same being a red haw tree 4 in dia marked 2. M. B. L. on N & E side tree standing on East Bank of branch and in S & E corner Parish pasture

3<sup>d</sup> mile Base line in Foard County Texas

Begin at 2 mile tree or monument

Thence ~~west~~ (Transit Line)

at 400 vs leave valley and enter mesquite flat

- 617 cross division wire fence to Parish Pasture
- 918 cross branch runs N. E. into Beaver Creek
- 1694 cross wire fence 148 vs North of corner <sup>of beam</sup> (S W)
- 1900.8 Mound of Earth 2 feet high pits on East and west <sup>feet</sup> 2 x 2. 12 inches deep

4<sup>th</sup> mile Base Line in Foard County

Begin at 3 mile mound

Thence West.

- 528 branch runs N. E. into South Beaver creek
- 1613 Post and wire fence runs North and South
- 1900.8 4<sup>th</sup> mile mound 2 feet high pits on East and west <sup>feet</sup> 2 x 2. 12 inches deep two mesquites one 3 1/2 inches in dia mk'd B L bis N 11 W 50 vs magnetic variation 9 1/2

5<sup>th</sup> mile Base Line in Foard County

Begin at 4<sup>th</sup> mile mound

Thence West.

- 535 branch runs N. E. into South Beaver creek

920 mesquite flat 1760 vrs cross wire fence  
 1760 cross wire fence runs North and South  
 1770 Cross division line between Block F<sup>1</sup> and Block B  
 survey to 80 m<sup>n</sup> and N 10 m<sup>n</sup> B. H & T. C. Ry Co surveys  
 NW corner of Block F<sup>1</sup> and NE corner of Block B  
 H & T. C. Ry Co surveys brs North 1675 vrs

1900.8 mound of Earth 2 feet high pits East and west  
 2 x 2, 12 inches<sup>deep</sup> a mesquite 4 in dia brs N 8 1/2 E 22 vrs  
 6<sup>th</sup> mile Base Line in Board County  
 Begin at 5<sup>th</sup> mile mound

Thence West at

1400 head of Branch runs N.E. into Beaver creek vrs  
 1769 cross division line between 10912 H & T. C. Ry Co surveys  
 corners of 7. 2. 11. 12 South 212 vrs  
 Land mostly level small scattering mesquite timber

1900.8 mound of Earth pits 2 x 2, on East and west 12  
 inches deep mound 2 feet high  
 7<sup>th</sup> mile Base line in Board County  
 Begin at 6<sup>th</sup> mile mound

Thence West at

1360 cross wire fence cross road at 1380 vrs course of  
 fence N 87 1/2 W at 1740 vrs cross Witherspoon pasture  
 1762 cross line of 12713 Block B NE corner of survey 13 is North 1686 vrs  
 fence (999 Brand) course North and South

1900.8 mound of Earth on high ridge about 150 vrs  
 S.W. of Witherspoon gate mound 2 feet high  
 pits 2 feet x 2 12 inches deep on East and west  
 near brakes of Wichita River

8<sup>th</sup> mile Base Line in Board County

Begin at the 7<sup>th</sup> mile mound. Thence West

420 cross branch runs N.E. into South Beaver creek  
 1000 red flat

1900.8 mound of Earth near west edge of mesquite  
 flat or slope and near East edge of brakes of  
 Wichita River mound 2 feet high pits East &  
 west 2 x 2 12 inches<sup>deep</sup> a forked mesquite East one  
 6 in dia mk<sup>d</sup>  $\frac{1}{2}$  brs N 87 1/4 W 70 1/4 vrs



9<sup>th</sup> mile Baseline in Foard County

West  
 190 go into brake 560 leave brakes of Wichita River  
 960 go into brakes of Wichita River  
 1900.8 mound of Earth pits East and West <sup>feet</sup> 2 x 2  
 12 inches deep mound <sup>feet</sup> high a red knob  
 or hill brs S 30° W 55 vrs.

10<sup>th</sup> mile Base Line in Foard County

Begin at 9<sup>th</sup> mile mound, thence West,  
 40 red hill 1060 narrow ridge  
 1580 branch runs South into Wichita River  
 1765 high point in brakes  
 1900.8 cedar Post and <sup>inches</sup> 6 x 2 m<sup>k</sup>d 10. B T, and mound  
 of Earth on North side of hill pits East and  
 west <sup>feet</sup> 2 x 2 12 inches deep a cedar 5 in dia  
 m<sup>k</sup>d x brs 24° W 2 vrs. This mile in Wichita brakes

11<sup>th</sup> mile Base Line in Foard County

Begin at 10<sup>th</sup> mile mound thence West  
 1000 narrow ridge 1490 branch runs South into  
 Wichita River  
 1780 high point, or hill on South small hill on West  
 1900.8 mound of Earth and rock, marked B. T. 11. M.  
 on East side pits East & West 3 feet x 1 1/2 ~~deep~~  
 12 inches deep a forked cedar marked x 5 in dia  
 brs N 87 1/2° E 5 vrs another 5 in dia brs S 87 1/2° E 4 vrs

This Line all in the brakes of Wichita River

12<sup>th</sup> mile Base line in Foard County

Begin at 11<sup>th</sup> mile mound thence West  
 240 branch runs S.W. into Wichita River  
 401 cross wire fence runs N.E. & S.W. up branch  
 1000 to 1060 cross mesquite flat of good land and <sup>brakes</sup> entry  
 1788 cross line of 37 & 48 Block B <sup>47. 1/2 c. Ry. Co. Survey Corner to 48 37 brs North 1782 2 vrs</sup>  
 1900.8 mound of Earth pits East and West mound  
 on ~~and~~ West end of ridge western point of mesquite flat

in or surrounded by brackes pits East & West

<sup>best</sup>  
2 x 2 12 inches deep mound 2 feet high

Reading of magnetic variation from  $9^{\circ} 45'$  to  $9^{\circ} 50'$   
13<sup>th</sup> mile mound Base Line in Hoard County

Begin at 12<sup>th</sup> mile mound Thence West

240 high hill or to S.E. about 70 vrs

1285 South end of high point

1900.8 mound of Earth and rock mk<sup>d</sup> B I, 13 M rock 15 inches x 14 pit on East bracke on West,

14<sup>th</sup> mile Base line, Hoard County

Begin at 13<sup>th</sup> mile mound Thence West, at

550 branch 880 vrs open mesquite ridge

1840 open mesquite flat.

1900.8 mound of Earth 2 feet high pits 2<sup>feet</sup> x 2 12 inches deep pits on East and West, a forked mesquite 6 in dia marked B I brs S  $65^{\circ}$  E  $21\frac{1}{4}$  vrs another

2 $\frac{1}{2}$  in dia mk<sup>d</sup> B I brs N  $87\frac{1}{2}$  W  $15\frac{1}{4}$  vrs

Reading of needle or mag<sup>n</sup> var<sup>n</sup>  $9^{\circ} 45'$  to  $9^{\circ} 55'$  during the day

15<sup>th</sup> mile Base Line in Hoard County

Begin at 14<sup>th</sup> mile mound Thence West at

88 cross I, - road runs about North and South

(1832 Land nearly fine mesquite loam scattering  
cross line 60 or 61 B, look B H & I C R V Co Survey N.E. corner of 61 brs North 1768 vrs)  
mesquite timber

1900.8 mound of Earth <sup>2 feet high</sup> in nice open flat nearly clear of timber pits East and West 2<sup>feet</sup> x 2 12 inches deep a mesquite 3 in dia mk<sup>d</sup> x brs N  $56\frac{3}{4}$  E  $23\frac{1}{4}$  vrs another 4 in dia mk<sup>d</sup> x brs N  $45\frac{1}{2}$  E  $13\frac{1}{4}$  vrs.

16<sup>th</sup> mile Base Line in Hoard County

Begin at 15<sup>th</sup> mile mound Thence West at

620 branch runs <sup>South</sup> into Wichita River fine land small mesquite timber 1720 branch runs S.E. into main Wichita River

1900.8 mound of Earth 2 feet high pits 2<sup>feet</sup> x 2 12 inches deep on East and West,

17<sup>th</sup> mile Baseline in Foard County  
 Begin at 16<sup>th</sup> mile mound Thence West at  
 840 Benjamin and Vernon Road runs N E & S W,  
 1540 branch 1680 larger branch runs South into  
 Wichita River  
 1832 cross division of 72 & 73 Block B H & T C. R R Co Surveys  
 N. E. corner of s. 73 brs North 1799 vrs.  
 1900.8 mound of Earth 2 feet high pits on East and west  
<sup>feet</sup>  
 2 x 2 12 inches deep a Hack berry 2 in dia mk  
 x brs N 51 W 14 vrs

18<sup>th</sup> mile Baseline in Foard County  
 Begin at 17<sup>th</sup> mile mound Thence West at  
 180 cross Benjamin and Quanaah Road  
 380 branch runs S. E. into Wichita River  
 500 & 1525 & 1600 branches run S E into Wichita River  
 1814 wire fence runs N and S. 999 or Wilkerson division  
 fence to pasture  
 1900.8 mound of Earth 2 feet high pits East and  
<sup>feet</sup>  
 west 2 x 2 12 inches deep small mesquite timber  
 or brush land level good soil with stiff sod

19<sup>th</sup> mile Baseline in Foard County  
 Begin at 18<sup>th</sup> mile mound Thence West at  
 100 branch runs S E into Wichita River  
 1835 Cross Line of Survey Block Band 44 H & T C.  
 R R Co Surveys, and line of 84 Block Band 94  
 Block 44 S W corner of 83 in Block B brs South  
 62 vrs. and N W <sup>corner</sup> brs North 1838 vrs. and S E  
<sup>corner</sup>  
 94 in Block 44 brs South 958 vrs and N. E.  
 corner of s. 94 brs North 381 vrs

1900.8 mound of Earth 2 feet high pits East & West  
<sup>feet</sup>  
 2 x 2 12 inches deep a cedar 6 in dia mk x brs N 14 E  
 22 <sup>6</sup>/<sub>10</sub> vrs another 5 in dia mk x brs N 13 <sup>1</sup>/<sub>2</sub> E 22 <sup>2</sup>/<sub>10</sub> vrs

20<sup>th</sup> mile Base line in Foard County  
Begin at 15<sup>th</sup> mile mound Thence West at  
enter valley

- 410
- 1325 branch runs N.E. N.E. corner of 8<sup>d</sup> 95 is North 85 1/2 rrs
- 1176 cross line 947 95 Block 44 H & T C. R.R. Co. Surveys S.E. corner of 93 75 South 95 8 rrs
- 1486 Bluff Creek Road runs N.E. and S.W.
- 1655 branch runs S.E.
- 1896 branch " " "
- 1900.8 mound of Earth, 2 feet high pits East and West  
2 x 2 <sup>feet</sup> 12 inches deep branch brs South 2 rrs a mes-  
quite mkt x brs x 2 9 1/2 E 2 rrs. mag var 9.5-5: to 10 9'

27<sup>th</sup> mile Base Line in Foard County  
Begin at 20<sup>th</sup> mile mound Thence West at

- 196 small mound
- 1272 cross line 967 95 Block 44 H & T C. R.R. Co. Surveys N.E. corner of said 86 is North 85 1/2 rrs  
and S.E. corner is 95 8 rrs & out
- 1278 small river Bluff out
- 1342 Wichita River Bank
- 1406 center of River and Beginning of division  
line between Foard and Knox Counties
- 1900.8 mound of Earth 2 feet high in valley <sup>pits</sup> 2 x 2 <sup>feet</sup> 12 inches  
deep on East and West

22<sup>nd</sup> mile Base Line and County Boundary  
between Foard and Knox Counties  
Begin at 21<sup>st</sup> mile Thence West at

- 740 high hill East of branch valley 800 rrs center valley
- 1220 head of branch at
- 1517 ~~1477~~ cross line 967 97 Block 44 H & T C. R.R. Co. Surveys  
N.E. corner of said 97 is North 89 1/2 rrs and S.E.  
corner is South 95 8 rrs
- 1900.8 mound of Earth 2 feet high pits East and West  
2 x 2 <sup>feet</sup> 12 inches deep a Hack berry bunch on mkt  
x brs N 46 1/2 E 30 1/2 rrs mound on west of drain  
or draw.

23<sup>rd</sup> mile Baseline and County Boundary  
between Foard and Knox Counties

Begin at 22<sup>nd</sup> mile Thence West at

605, 625, 820 branches

1060 cross creek runs N.E. into Wichita River

1473 cross line of 97 & 98 Block 44 H & T.C. R.R. Co Surveys  
S.E. corner of said 98 brs South 958 vrs N & E cor  
ner brs North 891 vrs

1900.8 mound of Earth 2 feet <sup>high</sup> pits East and west  
2 x 2 <sup>feet</sup> 12 inches deep a cedar 5 in dia brs S 28 1/2 E  
11 1/2 vrs another 6 in dia brs S 13 1/2 E 3 1/2 vrs

24<sup>th</sup> mile Base line and County Boundary  
between Board and Knox Counties

Begin at 23<sup>rd</sup> mile mound Thence West at

1355 top of Bluff.

1648 cross line 98 & 99 Block 44 H & T.C. R.R. Co Surveys  
S.E. <sup>corner</sup> of said 99 brs South 905 vrs

1900.8 mound of Earth 2 feet high pits East & West  
2 x 2 <sup>feet</sup> 12 inches Larger rock in mound marked  
B, T, 24, M. on East side a cedar m<sup>rk</sup> x brs N 7 1/2 W  
22 vrs a scrubby mesquite on West side of round  
hill m<sup>rk</sup> x brs N 19 E 104.9 same round hill  
brs N 20 1/2 E, 105 vrs vrs. 24<sup>th</sup> mile in rough brakes

25<sup>th</sup> mile Base line and Boundary between  
Board and Knox Counties

Begin at 24<sup>th</sup> mile mound Thence West at

200 cross branch runs N.E. into <sup>middle</sup> Wichita River

780 branch runs N.E. " " " "

1150 White sand stone ledge branch brs North 35 vrs

1752 cross line of 99 & 100 Block 44 H & T.C. R.R. Co Surveys  
S.E. corner of said 100 brs South 880 vrs

1906.8 mound of Earth 2 feet pits East and West  
2 x 2 <sup>feet</sup> 12 inches 4 mesquites one 5 in dia m<sup>rk</sup>  
xx brs S 2 1/4 W 79 1/2 vrs small branch on NW about  
60 vrs N 45 W

26<sup>th</sup> mile Base line and County Boundary between Foard and Knox Counties.

546 Begin at 25<sup>th</sup> mile mound Thence West at branch runs N.E.

1748 cross line between surveys N° 100 & 101 Block 44 H & I.C. R.R. Co. Surveys S.E. corner of <sup>said</sup> 101 brs South 863 <sup>ms</sup>

1900.8 mound of Earth 2 feet high pits East and West <sup>but</sup> 2 x 2 12 inches deep.

27<sup>th</sup> mile Base line and County Boundary between Foard and Knox Counties

300 Begin at 26<sup>th</sup> mile mound Thence West at branch runs N.E.

1740 edge of brake

1742 cross division line 101 & 102 Block 44 H & I.C. R.R. Co. Surveys S.E. corner of <sup>said</sup> 102 brs South 847 <sup>ms</sup>

1900.8 mound of Earth 2 feet high pits East & West <sup>but</sup> 2 x 2 12 inches mound in brakes on East Slope of large branch East pit in East edge of brake.

28<sup>th</sup> mile Base Line and County Boundary between Foard and Knox Counties

640 Begin at 27<sup>th</sup> mile mound Thence West at branch <sup>1505</sup> ~~#00~~ branches runs N.E.

1900.8 mound of Earth 2 feet high pits East and West <sup>but</sup> 2 x 2 14 inches deep a Hackberry 3 in dia mkd xx brs N 82 1/2 E. 3 3/4 <sup>ms</sup> a cedar 2 in dia mkd xx brs S 2 2/4 W 2 3/4 <sup>ms</sup> mound on North slope of hill south of Middle Wichita River.

29<sup>th</sup> Mile Base Line and County Boundary between Foard and Knox Counties

157 Begin at 28<sup>th</sup> mile mound Thence West at cross division line between 102 and 103 Block 44

400 H & I.C. R.R. Co. Surveys S.E. corner of said 103 brs <sup>south</sup> 832 1/2 <sup>ms</sup> <sup>Wichita</sup> 480 and 720 branches run North int. middle

1080 mesquite flat,

1393 Cross wire fence and leave <sup>5997 7/8</sup> Witherspoon on pasture and enter D. T. T. pasture

1440 small branch runs N.W. into Middle Wichita River

1900.8 mound of Earth 30 vrs South of middle Wichita River mound 2 feet high pits East and West 2x2 12 inches deep a Hackberry brs S 45 3/4 W 25 1/2 vrs another brs S 23 3/4 W 36 1/4 vrs. bearing trees marked X

30th mile Baseline and County Boundary between Board and Knox Counties

Begin at 29th mile mound thence West to cross middle Wichita River course N.E. & S.W. at the crossing

202 cross division line <sup>between</sup> 103 Block 44 H & T C. R. R. Co Survey and 1 Block P H & C. N. Survey. N.W. corner of <sup>said</sup> 103 ~~Block 44~~ <sup>Block 44</sup> brs North 97 1/2 vrs. corner of ~~S. Block 44~~

800 mesquite flat 1680 branch runs south

1780 Wichita River Bluff 1800 slope of Bluff

1830 center of Middle Wichita River runs S.E. from N.W.

1900.8 mound of Earth 2 feet high around mesquite Post 6 feet long 8 in dia marked Board on North Knox. on S.E. and King on SW sides a large two year old Buffalo Horn and Gyp rock planted with said post rock and post 2 feet in ground Rock marked Oct 2nd 1891 (length of rock 2 1/2 feet) pits East and West 2x2 12 inches deep also one pit on south of mound and Post 2x2.1 foot deep a Bunch of Hackberry one mtd K on West K on East brs S 23 10' W 43.9 vrs a mesquite mtd B I brs S 8 1/4 W 72 vrs a Hackberry 4 in dia mtd X brs S 44 1/2 W 72.8 vrs. said corner on south side of Middle Wichita River in a horse shoe shaped Bend of S. River

Field Notes for Base Line and County  
Boundary for Foard and Knox Counties

Knox Co. Bdry Line 3

Counter 65034



State of Texas  
County of Knox

We the undersigned hereby certify  
that the above and foregoing Field Notes  
show the true and correct position of lines and  
corners indicated therein as surveyed by us  
on the ground Survey commenced Sept<sup>r</sup> 22<sup>d</sup>  
A.D. 1891 and finished Oct 9<sup>th</sup> A.D. 1891

Land Lines Taken by George L. Crum

Base Line and County Boundary by Ira Willington

Chas McGee } chain

A. J. Sartor

William Beardsly

Joe Lewis

} Carriers

Ira Willington State Surveyor

G. L. Crum Co. Surveyor Knox County Tex.

<sup>1/2</sup>  
7 Base Line from the  
NW Cor of Baylor Co  
dms West and defi-  
nitely establishing part  
of the Co bdy between

Knox and  
Howard Counties

Filed Oct 10<sup>th</sup> 1891

By Beaman

Examined and applied  
Oct 12<sup>th</sup> 1891 Beaman

\$5.00 Pam

Knox Co Entry Line 3