

KIMBLE COUNTY
ROLLED SKETCH NO. 15

Connecting Line

counter 467 43

The State of Texas
 County of Kimble I, John M^cNicol
 County Surveyor of the aforesaid county
 do hereby certify that I have found
 by actual measurement upon the
 ground the following described corner
 lines to be correct

Beginning at the S.W. corner of Survey
 No. 11 Waller Co. Tex. Land

Thence W 1900 rs a rod and a 10.5" brs S 55 W 40
 a 10.5" N N 74 1/2 W 52 rs
~~rs 50, 50 to 74 1/2 W 52 rs~~

Thence N 1900 rs a rod and a 10.5" brs N 44 1/2 E 42 1/2

Thence N 548 rs a rod and a ~~10.5" brs N 44 1/2 W 52 rs~~

Beg. at the N.W. corner of Survey No. 15
 D.A. & M.G. R.R. Co. Thence S 80 E 3737 rs a rod

and a ced. 6" brs S 41 W 70 3/5 rs Thence E 1320 rs

to rod and at end of above described 548 rs

course Thence N at 8352 rs a rod and

a 10.6" brs N 34 1/2 E 44 2/5 rs 10.4" brs N 74 W 38 1/2

at 3252 rs a rod and a ced 12" brs N 10 1/2 W 34 1/2

a ced. 8" brs N 2 1/2 W 74 1/5 rs Thence W 1250 rs

Thence N 36 rs to original S.W. cor. Sur. No. 16

G. C. & S. Ry Co. Thence ^W 1783 rs to a pt

fr. wh. a cor. of another Sur. No. 16 brs S 95 rs

Thence N 775 rs to N.E. cor. last named

Sur. No. 16 & S.E. cor. Sur. No. 15 G. C. & S. Ry Co.

Thence W at 2310 rs the N.W. corner of

Survey No. - ~~for J. W. Bailey~~ Thence S 1042 rs

Thence W 671 rs to the S.W. corner of said

Connecting line out of Kimble Co. rolled sk. 15
 (Keep in flat folder in drawer with rolled sketches)
 page #1.

counter
 41444

Bartley survey, N.W. cor. Sur. No. 26, 1897
White Thence S 614 rs Thence W 382 rs to
the N.W. corner of Survey No. 753 in name
of Kimble County

Beg. again at original S.W. corner of
Survey No. 16 G. C. & S. J. Ry' Co.

Thence N 544 rs Thence E 2795 rs a
rk mid the S.W. corner Survey No. 13 J.C. Ry' Co
Thence E 1940 rs the S.E. cor. said Sur. No.
13 + S.W. cor. Sur. No. 14 J.C. Ry' Co

Thence E 1935 rs a rk mid the S.E. cor. said
Sur. No. 14 Thence N 89 1/2 E 1935 rs the S.E. cor.
Sur. No. 15 J.C. Ry' Co. Thence E 591 rs

Thence S at 1165 rs the N.W. cor. Sur. No.
12 Waller Co. Sch. Land at 1618 rs the N.E.
cor. Sur. No. 11 Waller Co. Sch. Land

Thence N 2078 rs Thence E 1320 rs a
rk mid a L.O. 5" brs S 46 3/4 E 58 rs L.O. 6" brs S
58 1/2 E 59 rs Thence E 1295 rs ^{10 ft 10 in south of} the original
S.E. cor. Sur. No. 8 G.C. & S.J. Ry' Co.

Thence E 1900 rs a rk mid due north of original
S.E. cor. Sur. No. 6 G.C. & S.J. Ry' Co a ced. 10" brs
N 42 1/2 W 40 1/3 rs a ced. 10" brs S 10 1/2 E 58 rs

Thence E 1900 rs a rk mid due north of orig-
inal S.E. cor. of Sur. No. 5 G.C. & S.J. Ry' Co. a L.O.
8" brs S 73 1/4 E 47 rs a L.O. 8" brs N 41 1/2 E 69 1/2 rs

Thence E 1902 rs the original S.E. cor. Sur. No. 4

Thence E 1912 rs the original S.E. cor. Sur. No. 3
G.C. & S.J. Ry' Co.

count 4695

Connecting line out of Kimble Co. rolled sk. 15
(Keep in flat folder in drawer with rolled sketches)
page #2

Connecting line out of Kimble Co. rolled sk. 15
(Keep in flat folder in drawer with rolled sketches)
page #3

Thence E 1918 vs the original S.E. cor. of
Sur. No. 2 G. C. & J. Ry' Co

Thence E 1918 vs the original S.E. cor of Sur,
No. 1 G. C. & J. Ry' Co.

Thence E at 1668 vs the N.W. corner of survey
No. 108 S. C. & J. Ry' Co.

Thence S 1625 vs another cor. said Sur. No 108

Thence W 5382³/₅ vs the N.W. corner of
Survey No. 14 Walter Es Oak Land

Req. again at the N.W. cor, Sur. No. 108

Thence E at 240 vs the original S E cor. Sur.
No. 10 H Crow & Ry' Co. at 847 vs the S.E.
cor. Sur. No. 9 H Crow & Ry' Co.

Thence S at 70 vs the S.W. cor. Sur. No. 11 G.C. &
J. Ry' Co. Thence S 725 vs Thence W 47 vs a

sk and the N.W. cor. Sur. No. 2 A.B. & M a L.O.

5" br N 87 E 25³/₅ vs a L.O. 5" br S 87³/₄ W 27 vs

Thence S 2664 vs a sk and Thence E 1509
vs a sk and the S.E. cor. Sur. No. 1 A.B. & M

Req. again at the N.E. corner of Sur. No.

108 Thence N 725 vs to the N.W. corner of
Sur. No. 11 G. C. & J. Ry' Co.

Req. again at N.E. corner of Survey No.
448 in name of E. Solgado

Thence S. 11740 vs to a sk and the S.E. cor.
said Survey No. 448

Thence S 52° 32' E 4158³/₅ vs

Thence S at 2251³/₅ vs a sk and fourth, a
L.O. 3" br N 44¹/₂ E 15¹/₂ vs a L.O. 2¹/₂" br S 48¹/₂ E

counter
44446

Connecting line out of Kimble Co. rolled sk. 15
(Keep in flat folder in drawer with rolled sketches)
page # 4.

8³/₄ vs at 5963⁷/₅ vs a stand on top of
ridge a L.O. 12" brs N76³/₄ E 150 vs a L.O.
6" brs N81 E 150 vs at 13670 vs a station
Thence E 493 vs a stand a L.O. 8" brs N4E
10³/₄ vs a L.O. 10" brs N49 E 6¹/₄ vs

Thence S 1^o, 19' W 4598 vs a stand a L.O. 5"
brs S84¹/₂ W 14⁷/₅ vs a L.O. 9" brs S89 W 31¹/₂ brs
Thence E 2931 vs Thence S 9603 vs to stand
15 miles from N.W. corner of Kim County
on Kim + Kimble County line

Thence E 600 vs Thence W 1268 vs the N. cor.
Survey No. 3 J. J. R. R. Co Thence W 2024 vs
the N.W. cor. Survey No. 1005^{L & S. V. Ry. Co.} from which
the S.W. cor. said Sur. No. 1005 brs S 1900 vs
Thence W 1900 vs the N.W. cor. Sur. No. 1006
Thence W at 800 vs a pt. fr wh. the S corner
Sur. No 1004 brs S 1900 vs at 3159 vs a
stand the N.W. cor. Sur. No. 1004 L & S. V. Ry. Co
a L.O. 5" brs S57E 41¹/₂ vs Thence S 45 E 162 vs
a stand a L.O. 12" brs N05 E 18 vs a L.O. 8" brs N
77 W 20 vs Thence S 45 W with N.W. line
Sur. No. 1142-1516 vs a stand the N.E. cor.
Sur. No. 1853 Mrs. Nancy Allen a L.O. 8" brs S87¹/₂
W 76 vs a L.O. 5" brs N46¹/₂ W 91¹/₂ vs

Thence W 260 vs the 11th mile monument on
county line Thence W 1449 vs the N.W. cor
aforesaid Sur. No. 1853 in N.E. line Sur. No.
1037 C. L. R. R. R. Co Thence N55 W 1556 vs
counter 76447

the N corner said sur. No. 1037 ~~A~~
 Thence N 1472 vs Thence W 4558 vs the
 S. E. corner aforesaid survey No. 1 A. B. M.
 Reg. again at the end on connection line
 run in a southerly direction from N.E. cor.
 survey No. 448 to Delgado at end of course
 "E 493 vs" fr. wh. a L.O. 8" brs N4E 10³/₄ vs a L.O. 10"
 N49 E 6¹/₄ vs Thence W 13294 vs Thence N 998
 vs a claim the N.W. cor. of sur. No. 2 & the S.E.
 cor. of sur. No. 1 J.W. N.B. R.R. Co. a L.O. 12" brs
 N14W 48 vs a L.O. 12" brs S74¹/₂ E 61³/₈ vs
 Thence W 950 vs S.W. cor. said sur. No. 1
 Thence N 1900 vs N.W. cor. said sur. No. 1
 Thence W 840 vs to intersection of S line of survey
 in name of Harvey Martin & E line of
 H. J. Langshaw Preemption
 Thence S 591 vs the S.E. cor. said H. J. Langshaw
 Preemption Thence W at 950 vs the S.W. cor.
 said Preemption at 988 vs the N.E. boundary
 line of sur. No. 667 B.B.B. & C.R.R. Co
 Thence S 30 E 792 vs the E. cor. said sur. No. 667
 Thence N 60 E 304 vs the N. cor. sur. No. 668
 B.B.B. & C.R.R. Co. Thence S 32 E 1561 vs
 the E. cor. said sur. No. 668 Thence S 60 W 132 vs
 the N. cor. sur. No. 669 B.B.B. & C.R.R. Co.
 Thence S 30 E 1664 vs the E. cor. said sur. 669
 Thence N 60 E 90 vs the N. cor. sur. No. 670
 Mrs. A. C. [redacted] Thence S 26 ~~W~~ E 1602 vs
 the E. cor. [redacted] No. 670 fr. wh. the

Connecting line out of Kimble Co. rolled sk. 15
 (Keep in flat folder in drawer with rolled sketches)
 page #5.

counter
 46448

Connecting line out of Kimble Co. rolled sk. 15
Keep in flat folder in drawer with rolled sketches
page 6.

N.W. corner of survey No. 1 B. L. & F. Co
S 30 E 425 vs Thence S 3317 vs
Thence E 802 vs the W. corner sur. No. 674
W. ^{cor} Dunlap Thence S 1697 vs
Thence W 1352 vs the N.W. corner aforesaid
sur. No. 11 G.C. & F. Ry Co.
Beg. again at the N. cor. survey No. 3
J.J. RR Co Thence E 2688 vs the N.E. cor.
sur. No. 1011 & NW cor. sur. No. 1012 L & LV Ry Co
Thence E 2688 vs the N.E. cor. sur. No. 1012
L.V. LV Ry Co Thence N 45 E 433 vs the N cor.
sur. No. 1052 J.J. RR Co. Thence S 45 E 1007 vs
another cor. said sur. No. 1052 Thence East
2073 vs the N.E. cor. said sur. No. 1052
Thence S 173 vs the N.W. cor. 1042 J.J. RR Co
Thence E 1925 vs the N.E. cor. 1042 & N.W. cor. 1041
J.J. RR Co Thence E 1940 vs the N.W. cor. 1043
J.J. RR Co. Thence E 1925 vs Thence S at
25 vs the N.W. cor. sur. No. 1044 J.J. RR Co. at
1925 vs the S.E. cor. 1043 & S.W. cor. 1044
Thence E at 1900 vs the S.E. cor. 1044 at 1930 vs
the N.E. cor. 1047 Thence S 1930 vs the S.E. cor.
sur. No. 1047 J.J. RR Co Thence N 2496 vs
the N.W. cor. sur. No. 1048 J.J. RR Co Thence E
984 vs Thence N 534 vs Thence E 2000 vs
the N.E. cor. survey No. 7 B. L. & F. 1900 vs
north of S.E. cor. said survey found and
identified on the ground

counter 76449

and I would further certify that each
line on the accompanying sketch has been
found by me by actual measurement on
the ground to have the length and direction
therein set forth and that every corner
marked with a circle in red ink has
been found and identified

Auction ^{at} May 24th 1886 John M. Nicol
Co. Sec. Min. Co.

Connecting line out of Kimble Co. rolled sk. 15
(Keep in flat folder in drawer with rolled sketches)
page #7.

counter 46750

Keep With

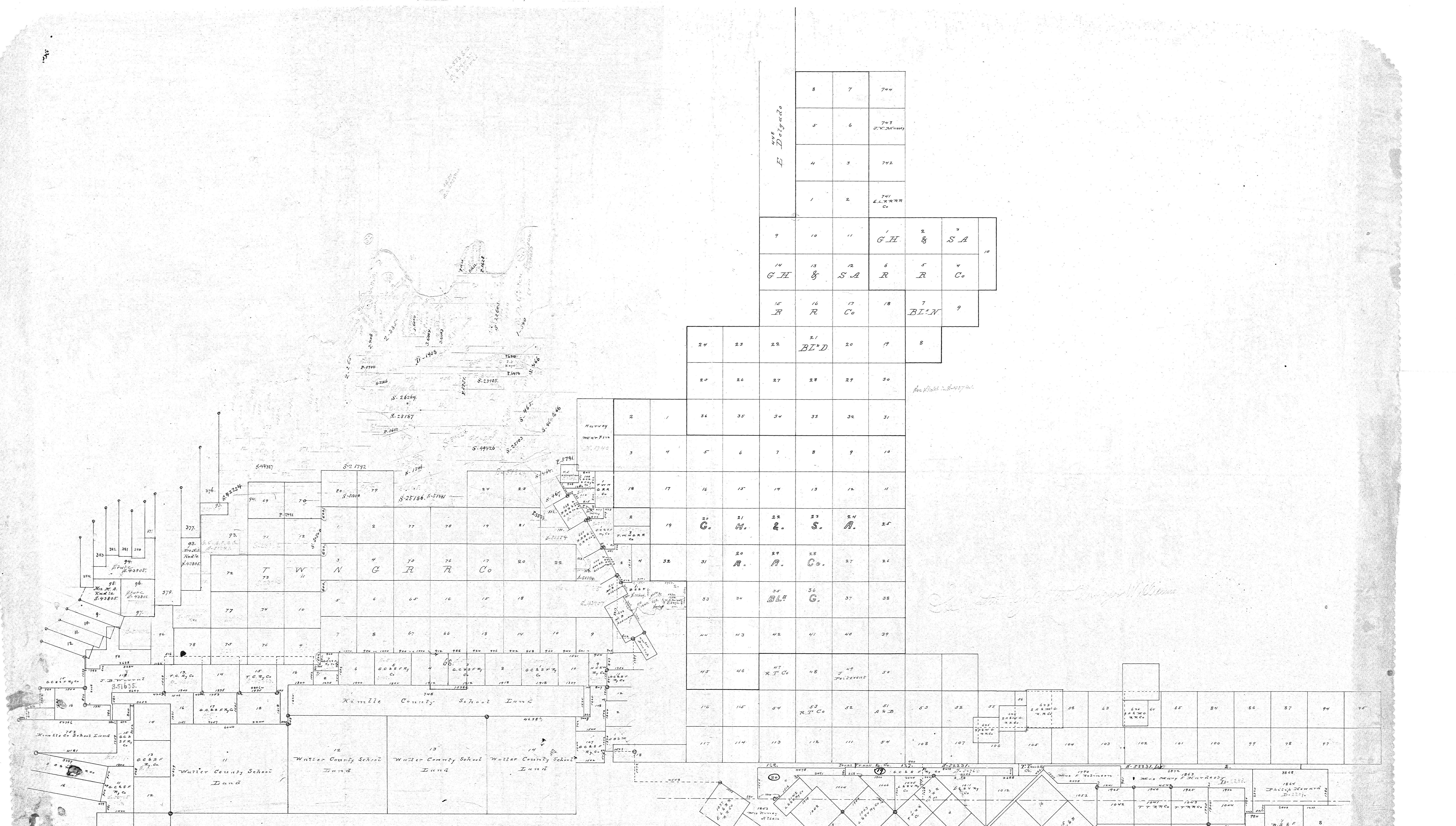
Kimble County Rolled Sketch "15"

Filed Aug 5, 1886

Connection Line By John M. McMillan

page 8.

County 46951



8	7	744
5	6	743
4	3	742
1	2	741

9	10	11	G.H.	8	S.A.
14	13	12	G.H.	R	R
15	16	17	R	7	9
				BLN	

24	23	22	21	20	19	8
			BLD			

2	1	24	23	22	21	20	19	18	17	16	15	14	13	12	11
3	4	5	6	7	8	9	10	11	12	13	14	15	16	17	18
18	17	16	15	14	13	12	11	10	9	8	7	6	5	4	3
19	20	21	22	23	24	25	26	27	28	29	30	31	32	33	34
35	36	37	38	39	40	41	42	43	44	45	46	47	48	49	50
51	52	53	54	55	56	57	58	59	60	61	62	63	64	65	66

Filed August 5th 1886.
 R. Robinson
 Chief Clerk

Waller County School Land
 Part of Waller County
 (Containing 1000 Acres)
 Filed Aug 5 1886



Kimble County Rotted Sketch "15"
 Sketch in South Part of Kimble County
 (Connection Line Attached)
 By John M. Nicol
 Filed Aug 5, 1886.

Sk. 15