

From Bound Bearings taken, says Co. Records of Comal County, Tex. C. 242 on 12th June 14, 1881.
 Bore N 23° W 44.5 yds. center on 20' diameter, from southeast 25' corner S
 15' from line on N 55° 17' W 25 yds
 10' from line on N 07° 45' W 18 1/2 yds

COUNTY COMMISSIONERS' COURT OF HAYS COUNTY, TEXAS.

COUNTY JUDGE Wm. H. Wheeler
 COMMISSIONER PRECINCT No 1 Eugene Jones
 " " " 2 John E. Jones
 " " " 3 Chas. Franklin
 " " " 4 Wm. C. Jones
 COUNTY CLERK Wm. C. Jones

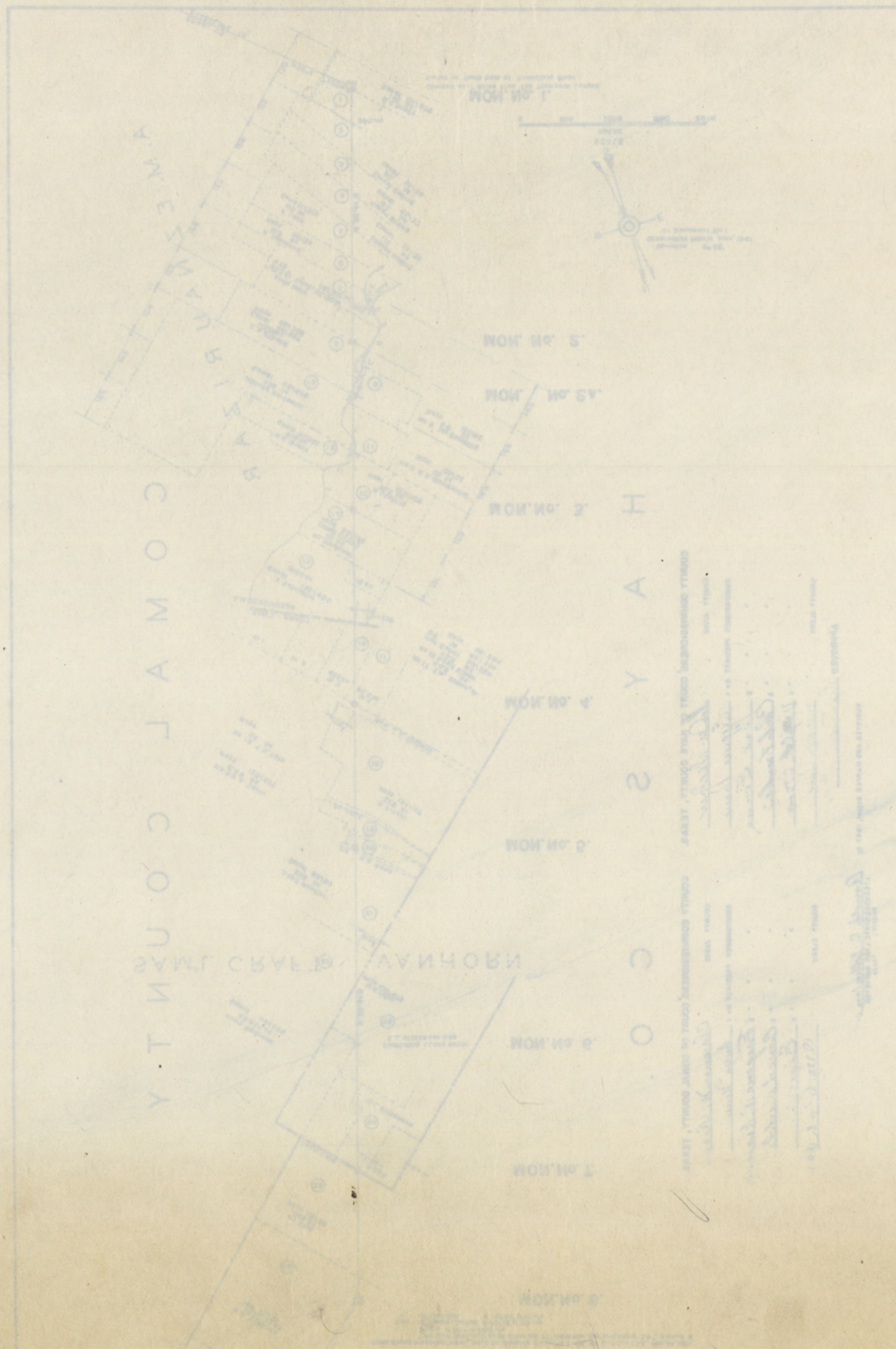
APPROVED Wm. C. Jones

COUNTY COMMISSIONERS' COURT OF COMAL COUNTY, TEXAS.

COUNTY JUDGE Clarence H. Rice
 COMMISSIONER PRECINCT No 1 Auga Jones
 " " " 2 Eugene R. Jones
 " " " 3 Conrad Burdick
 " " " 4 Edgar Jones
 COUNTY CLERK Wm. C. Jones

SURVEYED AND MAPPED August, 1947 by

Arnold C. Hollenbeck
 LICENSED STATE LAND SURVEYOR
 Austin, Texas



I, *Arnold C. Kellersisberger*, Surveyor,
 do hereby certify that the above is a true and correct copy of the original survey as shown to me by the parties to the same.
 Witness my hand and the seal of my office this 10th day of September, 1947.
 Arnold C. Kellersisberger
 Surveyor
 State of Texas

K-7-35a

Tract shown "Yantis Co. Bldg. in Reels"

PLAT OF BOUNDARY LINE
 BETWEEN COMAL AND
 HAYS COUNTIES. SURVEYED
 BY ARNOLD C. KELLERSISBERGER
 APPROVED SEP 10-1947.
 BY COMMISSIONERS COURTS.

SEE COMAL SK. FILE NO 21
 FOR ACKNOWLEDGMENT

W.S.

COUNTY COMMISSIONERS' COURT OF HAYS COUNTY, TEXAS.

COUNTY JUDGE W. G. McCallan
 COMMISSIONER PRECINCT No. 1 Eugene Perry
 " " " " Louis Evans
 " " " " Chas. Franklin
 " " " " Vergil B. Cozart
 COUNTY CLERK John Lind

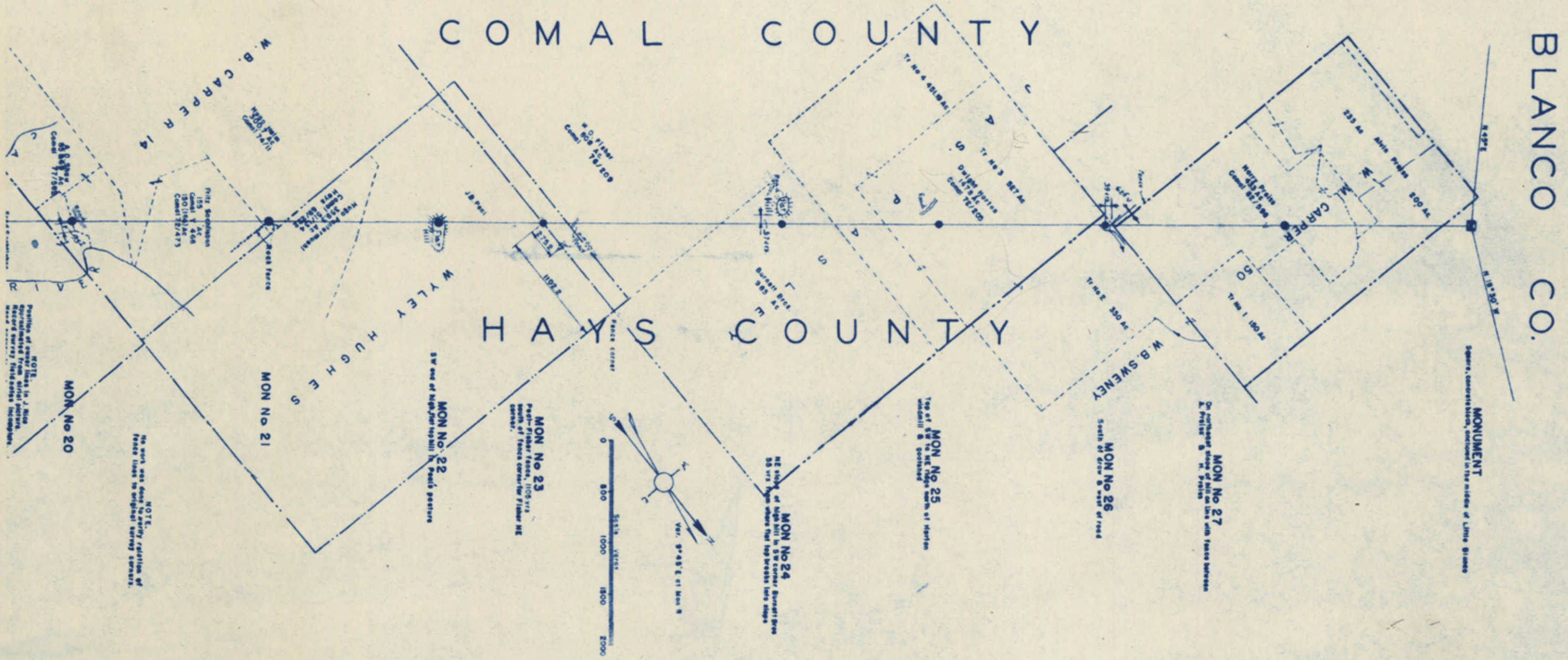
APPROVED September 10th 1947

COUNTY COMMISSIONERS' COURT OF COMAL COUNTY, TEXAS.

COUNTY JUDGE Clarence W. Rice
 COMMISSIONER PRECINCT No. 1 Augo Rouse
 " " " " Eugene R. Housse
 " " " " Edward Bartels
 " " " " Edgar Turner
 COUNTY CLERK Otto Rohde

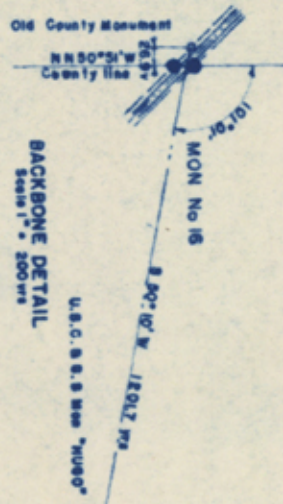
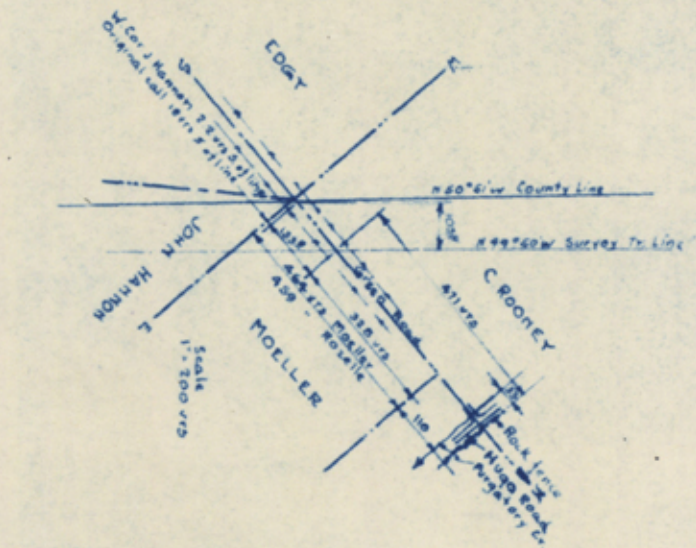
APPROVED Sept 10, 1947.

SURVEYED AND MAPPED August, 1947 by Donald C. Kellerman
 LICENSED STATE LAND SURVEYOR
 Austin, Texas.



BLANCO CO.

325-7-12



COUNTY COMMISSIONERS' COURT OF COMAL COUNTY, TEXAS. COUNTY COMMISSIONERS' COURT OF HAYS COUNTY, TEXAS.

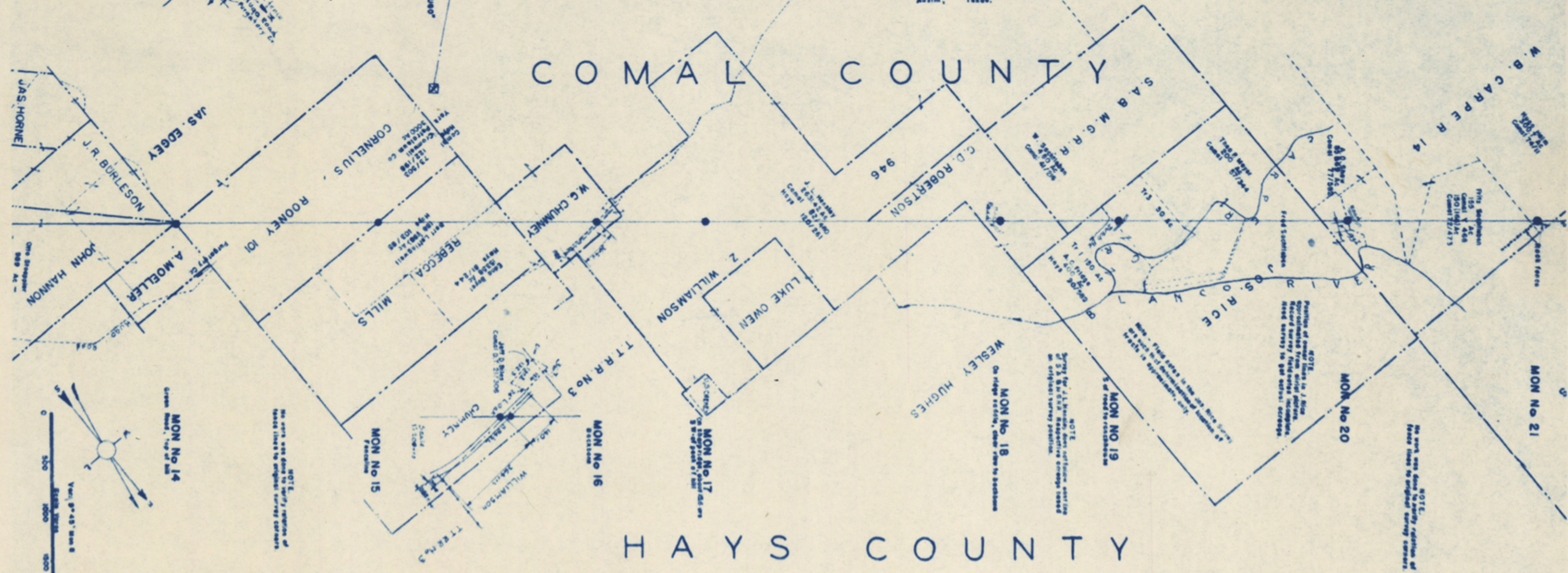
COUNTY JUDGE Clarence W. Rice
 COMMISSIONER PRECINCT No 1 Hugo News
 . . . 2 Engene R. Krause
 . . . 3 Ernest Bostel
 . . . 4 Edgar Simms
 COUNTY CLERK Otto Rohde

COUNTY JUDGE L. G. Wheeler
 COMMISSIONER PRECINCT No 1 Cyprien Poy
 . . . 2 Jacil Emms
 . . . 3 John Franklin
 . . . 4 Wigil B. Com
 COUNTY CLERK W. B. Carr

APPROVED Sept 10, 1947.

APPROVED September 10th 1947

SURVEYED AND MAPPED August, 1947 by Arnold C. Williams
 LICENSED STATE LAND SURVEYOR
 Austin, Texas.



NOTE: No part was done to verify position of fence lines by original survey corners.

NOTE: Survey for J.L. Hughes done in 1946 and 1947. Original survey records are in original survey position.

NOTE: Position of fence lines in J. Rice partitioned from original survey records. Record survey references are noted survey to get entire acreage.

NOTE: No part was done to verify position of fence lines by original survey corners.

COUNTY COMMISSIONERS' COURT OF HAYS COUNTY, TEXAS.

COUNTY JUDGE

W. M. Slebock

COMMISSIONER PRECINCT No 1

Eugene Perry

Frank E. ...

Chas. ...

Virgil B. ...

COUNTY CLERK

Sarah ...

APPROVED *September 10th 1947*

SURVEYED AND MAPPED August, 1947, by

COUNTY COMMISSIONERS' COURT OF COMAL COUNTY, TEXAS.

COUNTY JUDGE

Clarence W. Rice

COMMISSIONER PRECINCT No 1

Augus ...

Eugene W. ...

Conest ...

Edgar ...

COUNTY CLERK

... ..

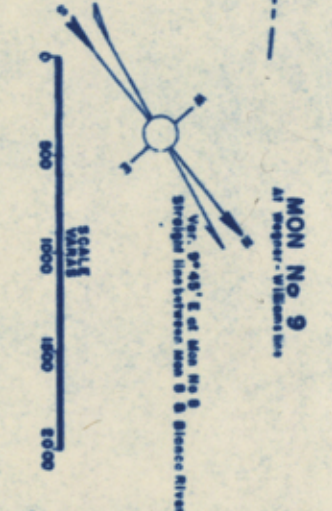
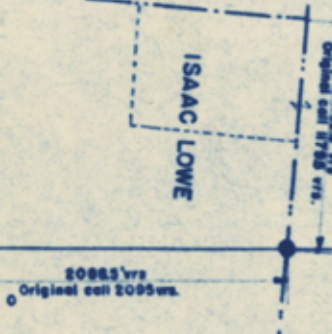
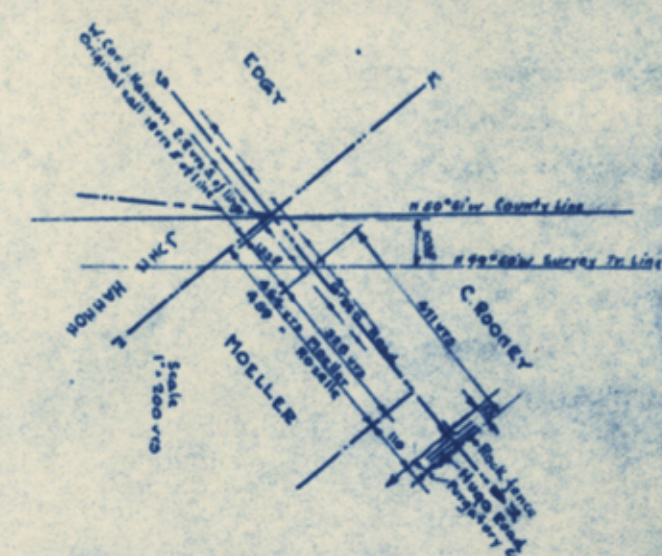
APPROVED *Sept 10-1947*

Arnold C. Hollenbeck
LICENSED STATE LAND SURVEYOR
Austin, Texas.

COMAL COUNTY

HAYS COUNTY

OB. F. CLEMENTS.



JONATHAN SCOTT

HENRY PETTIT

SIMON L. JONES

R. B. MOORE

JAS. HORNE

J. R. BURLESON

JAS. EDDY

W. M. PERRY

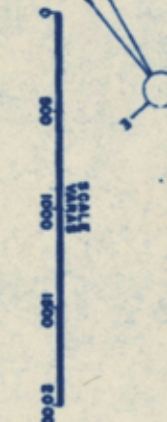
W. HUDSON

JOHN HANNON

A. MOELLER

ROONEY

Original call 20863 vrs



MON No 9

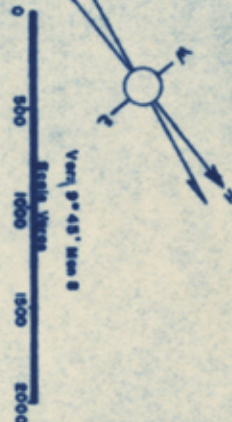
MON No 10

MON No 11

MON No 12

MON No 13

MON No 14



NOTE: No work was done to verify corners of these tracts to original survey corners.