

KARNES Co.

No 4

GONZALES Co.

JEAN HUMPHRIES



ISAAC BAKER

Jno. Duderstadt 1115

Matilda Harris 582<sup>a</sup>

DE WITT Co.



STEEN & GARRETT - SURVEYORS

Scale 500 Yards / Inch





No 6.

CHAS. P. DELMAS

W. W. Hollan

374A 328A

GARRILLA

B. P. Stephenson

240A 460A

PECK LG

NICHOLAS

LAVACA COUNTY.

DEWITT COUNTY.

Scale 500 yds = 1 inch.

Chicolete Creek

VICTORIA CO.



ORDER IN RE COUNTY LINE:

"W. R. Garrett and H. H. Russell, Co. Surveyors of De Witt & Lavaca Counties appointed to mark and survey the line between said counties, submit maps and report of said survey, the same being examined, are approved and Clerk instructed to certify this Court's approval thereof, and maps and report ordered on file and field notes recorded, certificate to be made in triplicate."

The State of Texas,)

County of Lavaca. ) I, Jno. Buchanan, Clerk of the County Court in and for said County and State do hereby certify that the above is a true and correct copy of the order of the Com. Court of Lavaca Co., Texas, approving the report of W. R. Garrett Co. Surveyor of De Witt County, and H. H. Russell Co. Surveyor of Lavaca County, as said order now appears in the Minutes of the Commissioner's Court of said Lavaca County, in Volume "K", on page 341.

Given under my hand and the seal of said Court of Lavaca County at office in Hallettsville, this March 11, 1907.

*Jno Buchanan*

County Clerk of Lavaca Co., Tex.

*By J. Ballard, Deputy*



"Order fixing County Line" February 9, 1907.

This day coming on to be heard the report of W.R. Garrett, County Surveyor of DeWitt County, and the reports of the County Surveyors of Gonzales, Lavaca and Victoria Counties, with reference to fixing and marking the lines between said Counties and DeWitt County, and the field notes of the various surveys crossing said lines, and the court having examined the same, approves the reports and orders the field notes recorded in the minutes of the court, and the maps filed, and that copies of said reports be certified to the General Land Office for observance.

The State of Texas:

County of DeWitt: I, G.P. Box, Clerk of the County Court of DeWitt County, Texas, do hereby certify that the above is a true and correct copy of the order of the Commissioners' Court of DeWitt County, Texas, approving the report of W.R. Garrett, County Surveyor of DeWitt County, and the reports of the County Surveyors of Gonzales, Lavaca and Victoria Counties, Texas, with reference to the County lines between said DeWitt County, and said Gonzales, Lavaca and Victoria Counties, made on Feby. 9, 1907, as said order now appears in the Minutes of the Commissioners' Court of said DeWitt County, in Volume H, on page 124.

Given under my hand and the seal of the Commissioners' Court of DeWitt County, at office in Cuero, this Feby. 11, 1907.

G.P. Box  
County Clerk of DeWitt County, Texas

By J. Edgar Deputy.

K  
C  
C  
O



The State Of Texas

County of DeWitt

To the Hon.

J. J. Terrell Commissioner

of the General Land Office of Texas,

Be, H. H. Russell, County Surveyor of Lavaca County Texas, and W. R. Garrett

County Surveyor of DeWitt County Texas, who have been appointed by the County Judges and Commissioners Courts of our respective Counties to make a resurvey of the County line between said Lavaca County and DeWitt County, and plot the same, and to determine the correct number of acres of all such surveys as cross said County line, that are located in the respective Counties, beg leave to report that we have performed said work and hereto attache field notes of said County line, showing course and distance of the same, and mark same exhibit "A" and make the same a part of this report. We also attache a tabulated statement of the various surveys that cross said County line showing the acres in each survey, the number of <sup>acres</sup> ~~each survey~~ in each survey in each County, and mark the same exhibit "B" and make the same a part of this report. We also attache plats numbered from 1 to 6 inclusive showing the proper location of the said County line, and said surveys, and make the same a part hereof.

All of which is hereby respectfully submitted.

H. H. Russell

County Surveyor of Lavaca County Texas.

W. R. Garrett

County Surveyor of DeWitt County Texas.



Exhibit "A"

Field notes of the re-survey of the line between DeWitt and Lavaca Counties Texas. Beginning at an iron stake the Eastern corner of DeWitt County and the north corner of Victoria County, on the west line of Lavaca County, from which a Post Oak mkd "D" brs N 58 1/4 W 27 1/2 vrs, and a Post oak mkd "L" brs N 28 E 9 2/10 vrs, and a Post Oak mkd "D & V" brs S 51 W 82 vrs Thence N 39 W at 848 vrs the north bank of Chicolete Creek, a Live Oak mkd ≡ brs S 51 W 1 vr, at 851 vrs a Live Oak mkd ≡ brs N 51 E 1 vr, at 5300 vrs an iron stake on the line of the N Peck Lg, and the John Garrilla 1/3 Lg, S 45 W 1620 vrs from the east corner of the said John Garrilla survey, 8375 vrs an iron stake on the line of said John Garrilla survey and the C P Delmas 1/3 Lg, S 45 W 1320 vrs from the east corner of the said Delmas survey, at 11276 vrs an iron stake on the line of the said Delmas survey and S R Bostic survey, and on the north side of Little Brushy Creek, S 45 W 1020 vrs from the north corner of the said Delmas survey, at 13764 vrs an iron stake on the line of the Wm Mimms survey and the J P Lynch Lg, N 51 E 620 vrs from the West corner of the said Wm Mimms survey, 15860 vrs an iron stake on the line of the Terryville, Hope road, at 18758 vrs an iron stake on the line of the said J P Lynch Lg, and the Winfield Alford Lg, N 45 E 669 vrs from the Warnken and Kuester corner, at 21090 vrs an iron stake on the Cuero - Hallettsville road, and on the line between Kuester and Dickinson, and S 51 W 240 vrs from their corner, at 23505 vrs center of Big Brushy Creek, from which a Live Oak mkd "V" standing on the South side of the Creek brs S 39 E 7 vrs, and a large Cottonwood (now fallen down) on the north bank of the Creek brs N 39 W 4 vrs.

Thence down the Creek S 36 E 95 vrs to a stake.

Thence N 39 W at 195 vrs an iron stake on the line of the W Alford Lg and Pat May survey, S 51 W 730 vrs from the North corner of R E McMasters land, and N 51 E 215 vrs from the corner of C A Kesslers land in the center of Big Brusy Creek, at 1160 vrs a Post Oak mkd I, at 1273 vrs the line of John May Labore and the Pat May survey, N 45 E 444 vrs from the center of said Big Brushy Creek, at 3180 vrs an iron stake on the line of the John May Lg, N 45 E 360 vrs from the corner of the said John May Lg, at 4970 vrs a Mesquite tree mkd "G" brs N 44 W 132 1/2 vrs, at 6572 vrs an iron



stake on the north west line of R E McMasters land, 7178 vrs an iron stake on the Eastern edge of Blk 3 of the Center addition to the City of Yoakum, 20 vrs north of the S E corner of the said block, at 7419 vrs an iron stake on the Eastern line of block 64 in the said City of Yoakum, 19 1/2 vrs N E from the S E corner of the said block, at 7701 vrs an iron stake on the N W line of block 47, 34 1/2 vrs N E from the S W corner of the said block, ~~7780~~ 7880 vrs an iron stake on the edge of the side walk on Front Street, at 7882 1/2 vrs the Eastern line of block 5, 85/100 of a vr from the north east corner, at 8010 6/10 vrs an iron stake on the West<sup>r</sup>n edge of block 6, 45 6/10 vrs N E from the S W corner, at 8191 vrs an iron stake on the East line of block 21, & 11 1/2 vrs N E from the S E corner, 8473 4/10 vrs West line of block 23, 32 vrs N E from the S W corner, at 9757 vrs the line of the John May Lg, N 45 E 431 vrs from the north corner of the tract of land conveyed by Forrest May to Sam Lewis, at 11242 vrs an iron stake on the line of the Wm Fream Lg and the Christopher Fitzgerald survey, S 85 E 494 vrs from the S E corner of the T J Adams Lg, at 11944 vrs a Live Oak mkd X, at 11951 vrs the line of the T J Adams Lg, N 5 E 510 vrs from the S E corner at 12679 vrs a Live Oak mkd "C" brs N 25 E 43 vrs, at 13832 vrs line between C J Huth and A Nillsen, N 85 W 8 vrs from the S W corner of the tract conveyed by A Nillsen to Aug Kraemer, at 14331 vrs an iron stake on the line between John Huth and A Nillsen, a Live Oak <sup>48 inches in diameter</sup> mkd "L" brs N 25 1/2 E 10 vrs, at 16168 vrs line between John Huth and F A Colle, S 5 W 138 vrs from their corner, at 18413 vrs an iron stake on the North line of the T J Adams Lg, S 85 E 626 vrs from the N W corner, at 19145 vrs line of the John Flick and John Sowell surveys, S 85 E 125 vrs from their corner, at 19479 vrs an iron stake on the line of the said John Flick and John Sowell surveys, N 5 E 239 vrs from their corner, at 20260 vrs a rock a corner of the C S Hardwick 169 acres survey, at 21120 vrs an iron stake on the South line of the Lavaca County School Land, S 85 E 450 vrs from a corner of the same, at 23318 vrs an iron stake on the line between Peter Chilek Jr and Jos Ermis S 85 E 60 vrs from Chilek's N W corner, at 24069 vrs to an iron stake in a pile of stones the North corner of DeWitt County, and the East corner of Gonzales County, and a corner of Lavaca County,.

Surveyed July 31st to Aug 21st 1906. 5.



We H H Russell County Surveyor of Lavaca County Texas, and W R Garrett County Surveyor of DeWitt County Texas, do hereby certify that the foregoing survey was made by us on the ground, and according to law; that the limits boundaries and corners, with the marks, natural and artificial, are truly described in the foregoing field notes, and the plats hereto attached, just as we found them on the ground.

Witness our hands this 20th day of October A D 1906.

H. H. Russell  
County Surveyor of Lavaca County Texas.

W. R. Garrett  
County Surveyor of DeWitt County Texas.

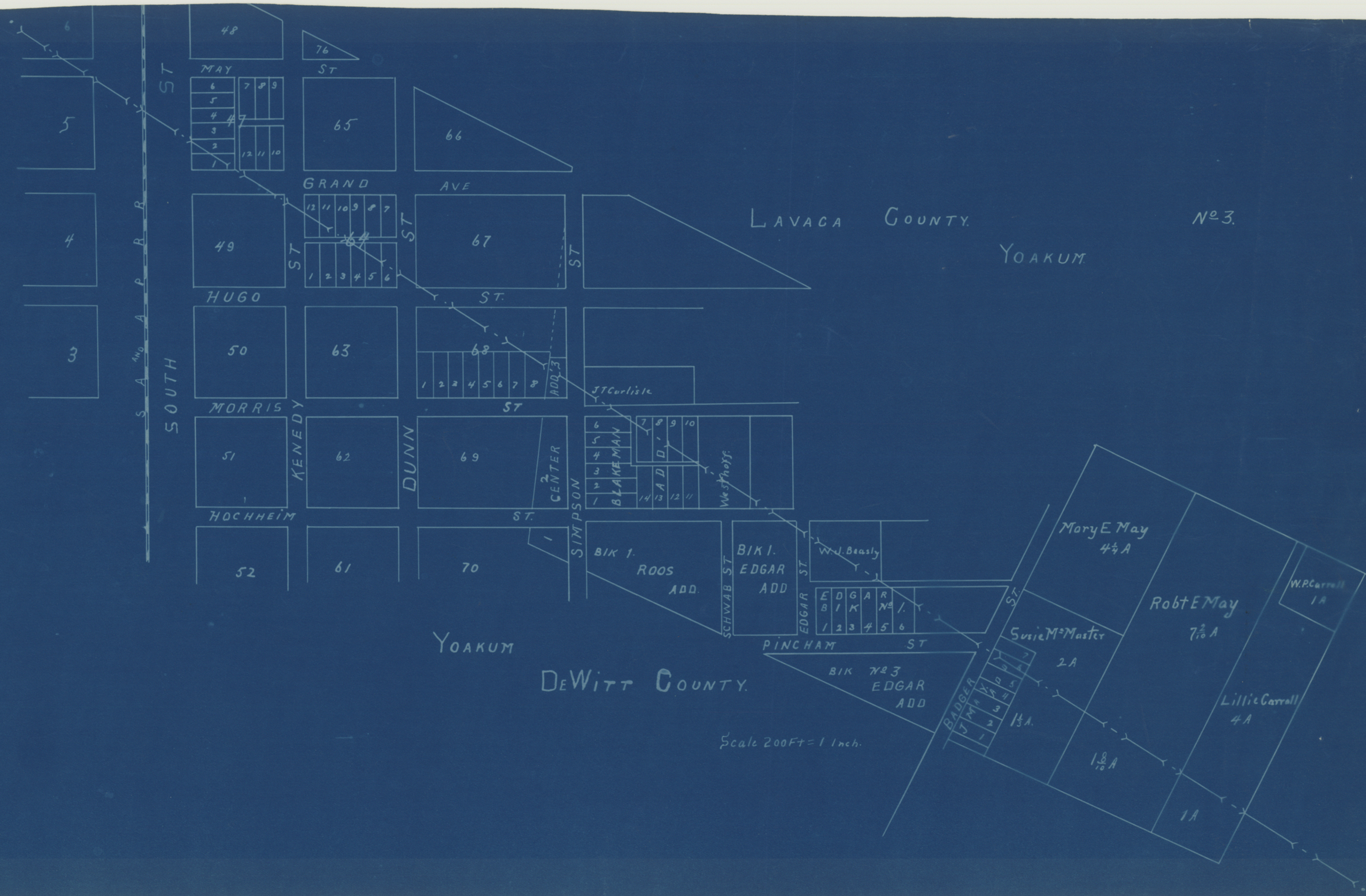
#####

Exhibit "B"

Showing the names of the ~~original~~ original surveys crossed by the County line, and the number of acres in each survey, in each County.

Name of the original survey	Number of acres in the survey	Number of acres in DeWitt County	Number of acres in Lavaca County
McGinty, M E	47	15	32
Flick, John	370.	<sup>143</sup> 223.	227
Sowell, J N	640.	5.	635.
Adams, J T	4590.	2783.	1807.
Fitzgerald, Christopher	640.	22.	618.
Fream, Wm	3933.	3790.	143.
Hagan, G T	63.	34.	29.
May, James	1102.	685.	417.
May, John (Labor)	192.	125.	67.
May, Patrick	719.	152.	567.
Alford, Winfield	4105.	2311.	1794.
Lynch, J P	3918.	1350.	2568.
Mimms, Wm	320.	105.	215.
Bostic, S R	640.	138.	502.
Delmas, Chas	1480.	890.	590.
Garrilla, John	1602.	814.	788.





Scale 200 FT = 1 Inch.



GONZALES Co.

A. W. HILL

P. COE

Mollie B. Cavett

116<sup>±</sup>

1256<sup>±</sup>

R. A. Houston

JAMES BIRD

351<sup>±</sup>

520<sup>±</sup>

94<sup>±</sup>

264<sup>±</sup>

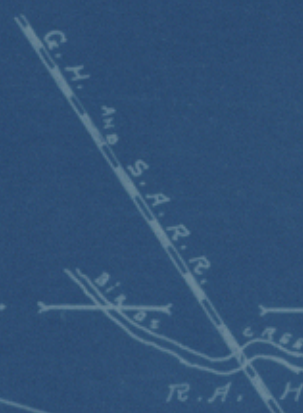
Willie Annie Houston

603<sup>±</sup>

L. A. Carter

230<sup>±</sup>

PATE



13A

PETER

116<sup>±</sup>

64<sup>1</sup>/<sub>2</sub> A

Willie Annie Houston

J. D. Houston Jr.

242<sup>±</sup>

501<sup>1</sup>/<sub>2</sub> A

Miller Bros. & Lord  
L. & L.

Mary Allert

104<sup>±</sup>

Jos. Carter

138<sup>±</sup>

ROBERT LOTT

Miller Bros. & Lord

119<sup>±</sup>

C. L. Aldridge

116<sup>±</sup>

Maggie J. Robischung

882<sup>±</sup>

J. D. Houston Jr.

707<sup>1</sup>/<sub>2</sub> A

BEALO TOWN  
SITE CO.

34<sup>±</sup>

104<sup>±</sup>

Mary Koenig

237<sup>±</sup>

Mrs. A. E. Kelley

100<sup>±</sup>

Dick Thomas Est.

124<sup>±</sup>

C. Edwards

110<sup>±</sup>

JAMES BIRD

Miller Bros. & Lord

1716<sup>±</sup>

J. N. O. YORK SUR.

116<sup>1</sup>/<sub>2</sub> A

A. Hamilton

312<sup>±</sup>

DEWITT Co.

a. r. sections  
557<sup>1</sup>/<sub>2</sub> A

17<sup>±</sup>

380<sup>1</sup>/<sub>2</sub> A



GONZALES Co.

DEWITT Co.

ROBERT LOFT



L.A. Carter 230<sup>d</sup>  
 L.A. Carter 90<sup>d</sup>  
 Annie Dickens 288<sup>d</sup>  
 Joe Carter 92<sup>d</sup>  
 Joe Carter 88<sup>d</sup>  
 Joe Carter 15<sup>d</sup>

MARY COGSWELL  
 Eliza Carter 106<sup>d</sup>  
 G.C. Milner 177<sup>d</sup>  
 J.E. Lord 82<sup>d</sup>  
 29<sup>d</sup>  
 197<sup>d</sup>

J. BILLINGS  
 H.J. DENSON

J.W. Carson 118<sup>d</sup>  
 J.W. Carson 47<sup>d</sup>  
 Preston 57<sup>d</sup>  
 D. Ayres 28<sup>d</sup>  
 W.E. Terry 32<sup>d</sup>  
 W.E. Terry 179<sup>d</sup>  
 J.A. Clark 200<sup>d</sup>  
 B.P. Terry 115<sup>d</sup>

Winn  
 Robert Miller 52<sup>d</sup>  
 W.M. Miller 39<sup>d</sup>  
 W.W. Miller 42<sup>d</sup>  
 W.W. Miller 37<sup>d</sup>  
 R.W. Brauer 43<sup>d</sup>

Frank Wustenbart 200<sup>d</sup>  
 Joseph McCallough 118<sup>d</sup>  
 Wm Davis Est 117<sup>d</sup>  
 Wm Davis 140<sup>d</sup>  
 Daniel Davis 400<sup>d</sup>  
 Zachariah Davis 180<sup>d</sup>  
 Robert Miller 330<sup>d</sup>  
 Robert Miller 330<sup>d</sup>  
 J.W. Davis 180<sup>d</sup>

Bella Hoch 74<sup>d</sup>  
 Dilworth & Green 150<sup>d</sup>  
 J.B. Tally 113<sup>d</sup>  
 H. Olsen 74<sup>d</sup>  
 F.F. Foster 238<sup>d</sup>  
 John Weigelt 600<sup>d</sup>  
 E.F. Moon 76<sup>d</sup>  
 B.A. St. Clair 79<sup>d</sup>  
 Mrs. A.M. Heister 132<sup>d</sup>  
 A.T. Spear 15<sup>d</sup>  
 G.J. Braden 50<sup>d</sup>  
 G. Brossels 278<sup>d</sup>  
 J.H. Gately 39<sup>d</sup>  
 J.H. Gately 39<sup>d</sup>  
 J.H. Gately 39<sup>d</sup>  
 J.H. Gately 39<sup>d</sup>

QUADRUPLE RIVER



JESSE MCGOY  
Gonzales County

FULCHER

JAMES HUGHES

JOSEPH D. CLEMENT

LAVACA CO. SCHOOL LAND

LAVACA County

W.D. SANDERS  
W.D. Bruns

B.P. KIZER SUR.

R. SINCLAIR SUR.

DEWITT COUNTY.

SIMEON BATEMAN

BENJAMIN

F.D. Blackwell  
78<sup>2</sup>

S.T. Spears  
182<sup>4</sup>

J.M. Gunn  
196<sup>2</sup>

J.H. Gary  
147<sup>2</sup>

Dora E. Cunningham  
81<sup>2</sup>

962<sup>2</sup>

Estate of B.S. Wood

Mrs M.C. Dismukes  
210<sup>8</sup>

W.D. Steen  
300<sup>8</sup>

Jno. Steen Jr  
40<sup>2</sup>

Jno. Steen Jr  
63<sup>2</sup>

Jno. Steen Jr  
54<sup>2</sup>

R.E. Steen Est.  
40<sup>2</sup>

R.E. Steen Est.  
46<sup>2</sup>

R.E. Steen Est.  
44<sup>2</sup>

Jno. Steen Jr  
45<sup>2</sup>

Jno. Steen Jr  
45<sup>2</sup>

Jno. Steen Jr  
45<sup>2</sup>

Jno. Steen Jr  
45<sup>2</sup>

Jno. Steen Jr  
45<sup>2</sup>

Jno. Steen Jr  
45<sup>2</sup>

Jno. Steen Jr  
45<sup>2</sup>

Jno. Steen Jr  
45<sup>2</sup>

Jno. Steen Jr  
45<sup>2</sup>

Jno. Steen Jr  
45<sup>2</sup>

Jno. Steen Jr  
45<sup>2</sup>

Jno. Steen Jr  
45<sup>2</sup>

Jno. Steen Jr  
45<sup>2</sup>

Jno. Steen Jr  
45<sup>2</sup>

Jno. Steen Jr  
45<sup>2</sup>

Jno. Steen Jr  
45<sup>2</sup>

Jno. Steen Jr  
45<sup>2</sup>

Jno. Steen Jr  
45<sup>2</sup>

Jno. Steen Jr  
45<sup>2</sup>

Jno. Steen Jr  
45<sup>2</sup>

Jno. Steen Jr  
45<sup>2</sup>

Jno. Steen Jr  
45<sup>2</sup>

Jno. Steen Jr  
45<sup>2</sup>

SAM MCGOY SUR.

M. BAKER.

J.D. CLEMENTS

GURDLE

RIVER

Aug Neeman  
79<sup>2</sup>

Emma Schmidt  
36<sup>2</sup>

J.J. Kuch  
73<sup>2</sup>

J.J. Kuch  
73<sup>2</sup>

J.J. Kuch  
73<sup>2</sup>

J.J. Kuch  
73<sup>2</sup>

J.J. Kuch  
73<sup>2</sup>

J.J. Kuch  
73<sup>2</sup>

J.J. Kuch  
73<sup>2</sup>

J.J. Kuch  
73<sup>2</sup>

J.J. Kuch  
73<sup>2</sup>

J.J. Kuch  
73<sup>2</sup>

J.J. Kuch  
73<sup>2</sup>

J.J. Kuch  
73<sup>2</sup>

J.J. Kuch  
73<sup>2</sup>

J.J. Kuch  
73<sup>2</sup>

J.J. Kuch  
73<sup>2</sup>

J.J. Kuch  
73<sup>2</sup>

J.H. Boothe  
81<sup>2</sup>

Mrs. E. Meegan  
81<sup>2</sup>

Mrs. M. Boothe  
81<sup>2</sup>

Jno. Weffer  
81<sup>2</sup>

Mphala Crossman  
97<sup>2</sup>

Emma Richardson  
80<sup>2</sup>

Harriet Buckett  
53<sup>2</sup>

H. Zisa  
145<sup>2</sup>

H. Zisa  
108<sup>2</sup>

Pat Burkett  
95<sup>2</sup>

J.O. Burkett  
67<sup>2</sup>

Pat Burkett  
95<sup>2</sup>

Amie Pittman  
75<sup>2</sup>

B.H. Burkett  
95<sup>2</sup>

Oliver Burkett  
95<sup>2</sup>

Amie Pittman  
75<sup>2</sup>

Pat Burkett  
95<sup>2</sup>

J.O. Burkett  
67<sup>2</sup>

Pat Burkett  
95<sup>2</sup>

Amie Pittman  
75<sup>2</sup>

Pat Burkett  
95<sup>2</sup>

J.O. Burkett  
67<sup>2</sup>

Pat Burkett  
95<sup>2</sup>

Amie Pittman  
75<sup>2</sup>

Pat Burkett  
95<sup>2</sup>

J.O. Burkett  
67<sup>2</sup>

Pat Burkett  
95<sup>2</sup>

Amie Pittman  
75<sup>2</sup>

Pat Burkett  
95<sup>2</sup>

J.O. Burkett  
67<sup>2</sup>

Pat Burkett  
95<sup>2</sup>

Amie Pittman  
75<sup>2</sup>

Pat Burkett  
95<sup>2</sup>

J.O. Burkett  
67<sup>2</sup>

Pat Burkett  
95<sup>2</sup>

Amie Pittman  
75<sup>2</sup>

Pat Burkett  
95<sup>2</sup>

J.O. Burkett  
67<sup>2</sup>

Pat Burkett  
95<sup>2</sup>

Amie Pittman  
75<sup>2</sup>

Pat Burkett  
95<sup>2</sup>

J.O. Burkett  
67<sup>2</sup>

Pat Burkett  
95<sup>2</sup>

Amie Pittman  
75<sup>2</sup>

Pat Burkett  
95<sup>2</sup>

J.O. Burkett  
67<sup>2</sup>

Pat Burkett  
95<sup>2</sup>

Amie Pittman  
75<sup>2</sup>

Pat Burkett  
95<sup>2</sup>

J.O. Burkett  
67<sup>2</sup>

Pat Burkett  
95<sup>2</sup>

Amie Pittman  
75<sup>2</sup>



To the Hon.

J. J. Terrell, Commissioner of the Gen Land  
Office, Austin Texas.

We, Enoch M Steen, County Surveyor of Gonzales County Texas, and W R Garrett, County Surveyor of DeWitt County Texas, who have been appointed by the County Judges and Commissioners Courts of our respective Counties to make a resurvey of the County line between said Gonzales County, and DeWitt County, and plat the same, and to determine the correct number of acres of all such surveys as cross said County line, that are located in the respective Counties, beg leave to report that we have performed said work and hereto attache field notes of said County line, showing course and distance of same, and mark the same exhibit "A" and make the same a part of this report. We also attache a tabulated statement of the various surveys that cross said County line, showing the number of acres in each survey, the number of each survey situated in each County and mark the same exhibit "B" and make the same a part here of.

We also attache plats numbered from one to four inclusive showing the proper location of said County line, and make the same a part hereof.

Respectfully submitted.

E M Steen

County Surveyor of Gonzales County Texas.

W. R. Garrett

County Surveyor of DeWitt County Texas.



Exhibit "A"

Field notes of the resurvey of the line between Gonzales and DeWitt Counties Texas.

Beginning at an iron stake the North corner of DeWitt County, and the East corner of Gonzales County.

Thence S 51 W, at 900 vrs the line between the J D Clement Lg, and the an iron stake,  
Lavaca County School Land, N 4 W 1355 vrs from the S E corner of the JD Clement Lg, at 1610 vrs the center of Buntins Creek, at 2259 vrs center of said Buntins Creek again, at 2489 vrs a large Pecan tree mkd D on the S E side and @ on the N W side, at 3185 vrs the line between the W A Miskell survey, and the B P Kizer survey, S 57 E 331 vrs from their corner on the at 3892 vrs an iron stake,  
Jas Hughes line, at 4250 vrs the line between the Jas Hughes survey and the B P Kizer survey, S 33 W 1014 vrs from the North corner of the said B P Kizer survey, at 5130 vrs the line of H Dreyer's land N 9 E 98 vrs from his S E corner, at 5360 vrs Wm Gerdes house, at 5425 vrs the center of Jesse Branch, at 7260 vrs a large Ash tree on the bank of the Guadalupe River, the common corner between the Jesse McCoy 1/4 Lg and the James Hughes 1/4 Lg, at 7320 vrs a stake on the West bank of the said River 5 vrs N 39 W of a large Cottonwood tree mkd X ii, at 10546 vrs the line between the Ben Fulcher 1/4 Lg and the Simon Batemen Lg, N 45 W 236 vrs from their common corner on the River, at 11700 vrs to an iron stake on the road, at 11705 vrs the line between Mrs Dismuke and the B. & Wood land S 45 E 920 vrs from Mrs Dismukes corner, at 12694 vrs the line of Spears land S 45 E 32 vrs from his NN W corner, at 14047 vrs the line between the Simon Bateman Lg and the Daniel Davis Lg, at 14118 vrs a Burr Oak m Oak mkd D & W (old mks), 14170 vrs the center of Dentons Creek, at 15498 vrs the line of F F Foster's tract S 45 E 162 vrs from his West corner at 16064 vrs the line between the Hester Homestead tract and the Wm Davis tract, S 45 E 210 vrs from Wm Davis North corner, at 17276 vrs the line between the Wm Davis Est and Jos McColloch tract, S 40 E 111 vrs from their common corner, at 19090 vrs the line between the Daniel Davis Lg, and the Ben Fulcher survey, S 45 E 1108 vrs from the West corner of the Davis Lg, at 19400 vrs an iron stake on the edge of the road, at 21742 vrs



Daniel Davis Lg, at 19400 vrs to an iron stake on the edge of the road, at 21742 vrs an iron stake on the line between the David Ayres labor and the R H Wynne Survey N 47 W 345 vrs from their common corner, at 22072 vrs the center of Fulcher Creek, at 23706 vrs corner of J E Lord and L A Preston's land, at 23852 vrs another corner of J E Lord's , and L A Preston's, and also a corner of G C Milner's land, at 24652 vrs an iron stake on the west Line of Milner's land, at 27093 vrs a rock on the line of the Mary Cogswell survey and the Robt Lott survey, the North corner of C L Aldridge's land, N 20 W 404 vrs from the S W corner of the Mary Cogswell survey, at 28577 vrs the line between Mary ~~Affert~~ and Miller Bro's and Lord, S 60 E 103 vrs from the S E corner of the A W Hill Lg, an iron stake, at 28958 vrs a Live Oak mkd fore and aft, at 30458 vrs an iron stake on the line between the Robt Lott survey and the James Bird Lg, S 20 E 691 vrs from their corner, at 31367 vrs the center of Sandies Creek, at 31472 vrs center of same, at 31827 vrs center of said Sandies Creek the third and last time, at 33533 vrs an iron stake on the line between Miller Bro's and Lord, and J D Houston, N 20 W 1566 vrs from their corner on Mrs Koenig's line, at 34566 vrs an iron stake on the line between J D Houston and Annie Houston, 36288 vrs an iron stake on the line between R A & Annie Houston, N 20 W 773 vrs from R A Houston's S E corner, at 37691 vrs the center of the Cuero, Stockdale extension of the G H & S A Ry Co, at 37819 vrs the center of Bird's Creek, at 39021 vrs an iron stake on the line between R A & J D Houston S 67 3/4 E 19 vrs from J D Houston's corner, at 42108 vrs an iron stake on the edge of the road, at 42116 vrs the line of the Peter Pate Lg and The Wm Robertson Lg, S 51 E 2271 vrs from the West corner of the Peter Pate Lg, and N 51 W 630 vrs from Mollie Cavit's South corner, and S 51 E 236 vrs from Frank Cochran's North corner, at 44255 vrs an iron stake on J H Taylor's and Carrol Teas' line, N 51 W 190 vrs from their corner , at 46457 vrs an iron stake, at 47307 vrs an iron stake on the road, at 47312 vrs the line of the Wm Robertson Lg and the Isaac Baker Survey, N 51 W 820 vrs from the corner between Frank Cochran and Alice Taylor, and S 51 E 1211 vrs from the West corner of the Wm Robertson Lg,



and S 51 E 964 vrs from the North corner of the Isaac Baker Survey, at 48597 vrs the center of Clear Creek, at 48742 vrs center of same, at 48857 vrs center of the same Creek the third time, at 50227 vrs an iron stake on the road, at 50232 vrs line of the Jean Humphries and Francisco Gonzales Lg's, N 60 W 80 vrs from the corner of said Survey's and the corner of the Isaac Baker Survey, at 50854 vrs an iron stake near Martin Sasse's house, at 51617 vrs an iron stake, at 51622 vrs line between Martin & C A Sasse, S 60 E 592 vrs from their corner, at 53697 vrs an iron stake on a high hill, at 54917 vrs line between Wm Lamprecht and Ed Rabenaldt, N 60 W 584 vrs from Lamprecht's corner, at 55577 vrs to an iron stake and pile of rocks, 5 4/10 vrs N 49 E of the Southern line of the Francisco Gonzales Lg,. Thence S 41 E 57 vrs parallel with said line to an iron stake and a pile of rocks. Thence S 51 W 346 vrs to a Live Oak post Mkd D, G& K, and an iron stake and pile of rocks, supposed to be the corner between Gonzales and Karnes County Texas.

Surveyed May 7th to 17th 1906.

We Enoch M Steen County Surveyor of Gonzales County Texas, and W R Garrett County Souveyor of DeWitt County Texas, do hereby cer<sup>i</sup>fy that the fore~~g~~-going survey was made by us on the ground, and according to law; that the limits, boundaries and corners, with the marks, natural and artificial, are truly describ<sup>e</sup>d in the foregoing field notes, and the plats hereto attached, just as we found them on the ground.

Witness our hands this ~~August~~ July 27th 1906.

E M Steen

County Surveyor of Gonzales County Texas.

W. R. Garrett

County Surveyor of DeWitt County Texas.



Exhibit "B".

Name of the original Survey.	Number of acres in the Survey.	Number of acres in Gonzales County.	Number of acres in DeWitt County.
Clement, J D	4428.	4231.	197.
Kizer, B P	640.	30	610.
Miskell, W A	640.	7.	633.
Hughes, James	1107.	830.	277.
Fulcher, Ben	1326.	857.	469.
Bateman, Simon	4428.	3102.	1326.
Davis, Daniel	4167.	1240.	2927.
Fulcher, Ben	665.	9.	656.
Wynn, R H	4428.	4142.	286.
Ayers, David	177.	107.	70.
Cogswell, Mary	4428.	3420.	1008.
Lott, Robt	1276.	591.	685.
Bird, James	4595.	1407.	3188.
Bird, James	658.	446.	212.
Pate, Peter	4355.	2433.	1922
Robertson, William	4616.	1646.	2970.
Baker, Isaac	1920.	223.	1697.
Gonzales, Francisco	4486.	<del>2805.</del> 1933	<del>1081.</del> 2553

X  
C  
N  
O  
T



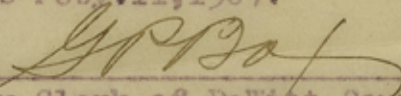
"Order fixing County Line" February 9, 1907.

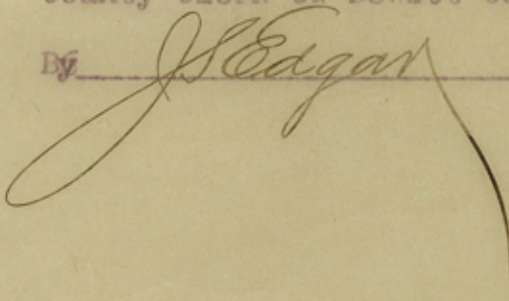
This day coming on to be heard the report of W.R. Garrett, County Surveyor of DeWitt County, and the reports of the County Surveyors of Gonzales, Lavaca and Victoria Counties, with reference to fixing and marking the lines between said Counties and DeWitt County, and the field notes of the various surveys crossing said lines, and the court having examined the same, approves the reports and orders the field notes recorded in the minutes of the court, and the maps filed, and that copies of said reports be certified to the General Land Office for observance.

The State of Texas:

County of DeWitt: I, G.P. Box, Clerk of the County Court of DeWitt County, Texas, do hereby certify that the above is a true and correct copy of the order of the Commissioners' Court of DeWitt County, Texas, approving the report of W.R. Garrett, County Surveyor of DeWitt County, and the reports of the County Surveyors of Gonzales, Lavaca and Victoria Counties, Texas, with reference to the County lines between said DeWitt County, and said Gonzales, Lavaca and Victoria Counties, made on Feby. 9, 1907, as said order now appears in the Minutes of the Commissioners' Court of said DeWitt County, in Volume H, on page 124.

Given under my hand and the seal of the Commissioners' Court of DeWitt County, at office in Cuero, this Feby. 11, 1907.

  
\_\_\_\_\_  
County Clerk of DeWitt County, Texas

By  Deputy.

X  
C  
N  
O.  
H



State of Texas )

Gonzales County) ( The Commissioners Court of Gonzales County, Texas, in Session, August Term, 1906, hereby approve and adopt the attached maps and field notes presented by the Surveyors, E. M. Steen of Gonzales County and W. R. Garrett of DeWitt County, as correct and fixing and establishing the true line between the Counties of Gonzales and DeWitt Counties.

<u>W. W. Glass</u>	County Judge		
<u>C. P. Rafter</u>	Commissioner Prec. 1		
<u>R. R. Wyatt</u>	" "	2	
<u>J. C. Hunt</u>	" "	3	
<u>W. G. Davis</u>	" "	4	

Respectfully submitted,

County Surveyor of Gonzales County Texas.

County Surveyor of DeWitt County Texas.

T  
C  
N  
C  
T



LAVACA COUNTY.

No 1.

GONZALES COUNTY.  
COUNTY-SCHOOL LAND.  
LAVACA  
J D CLEMENT LG

W M MISKILL SUR

DEWITT COUNTY.

THOS.

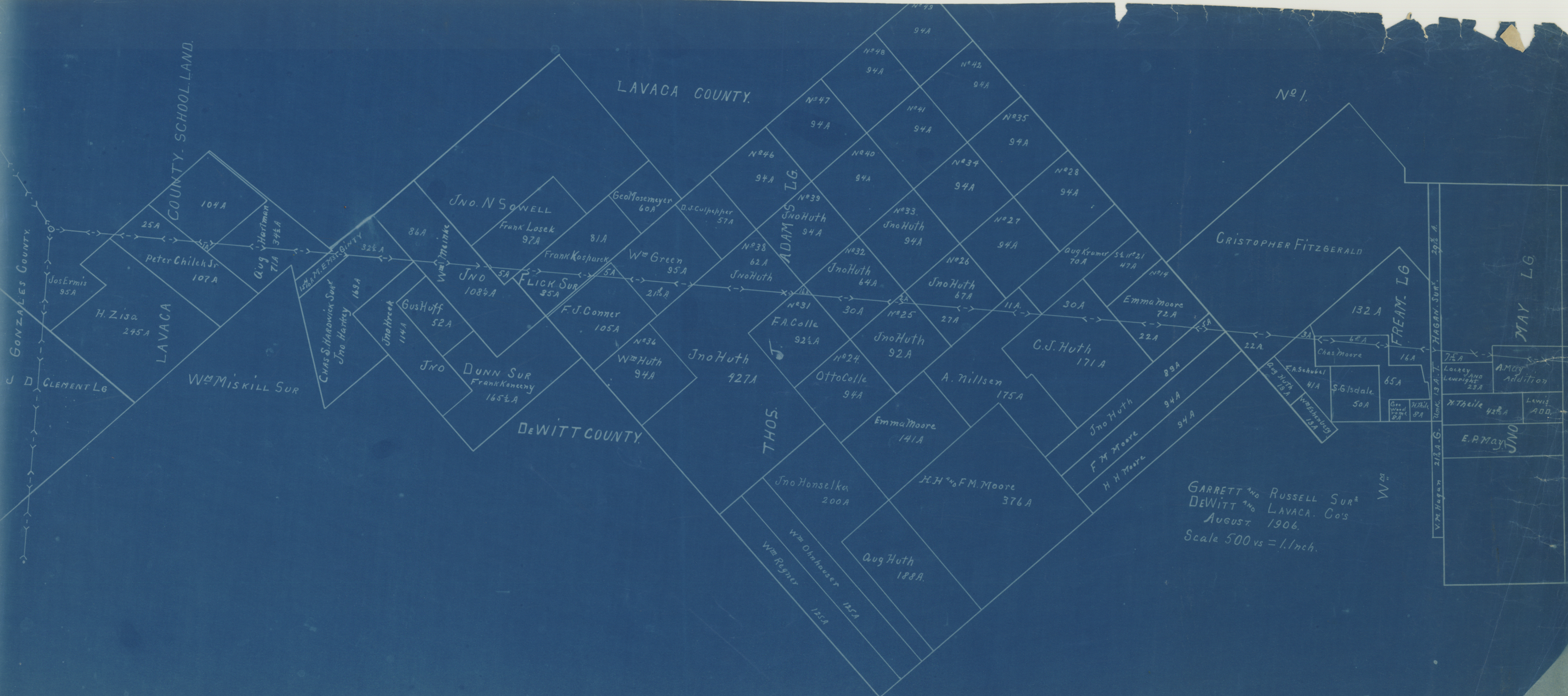
ADAM S LG

CRISTOPHER FITZGERALD

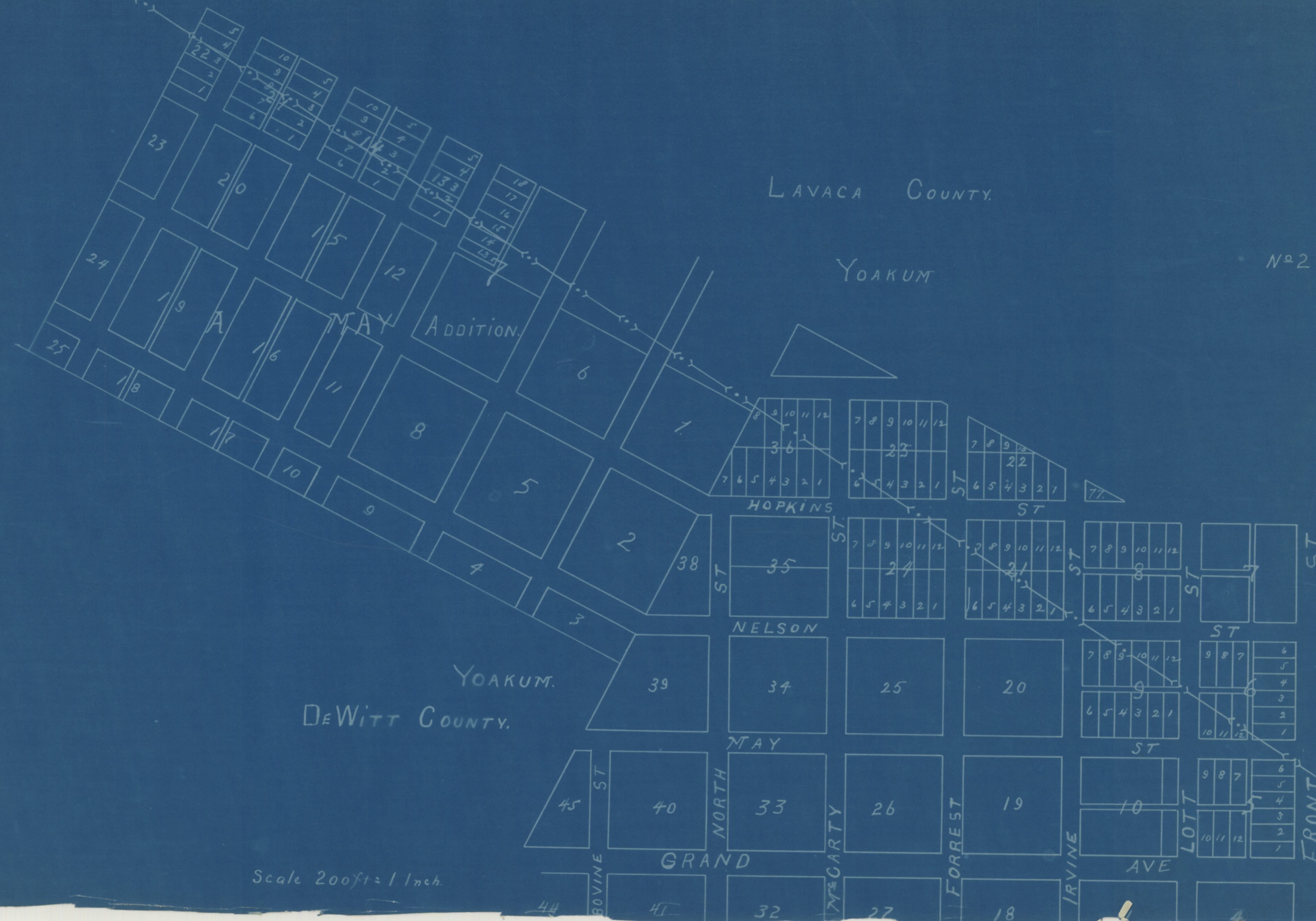
FREM. LG

MAY LG

GARRETT AND RUSSELL SURS  
DEWITT AND LAVACA CO'S  
AUGUST 1906.  
Scale 500 vs = 1.1 inch.







LAVACA COUNTY.

YOAKUM

No 2

YOAKUM.  
DEWITT COUNTY.

Scale 200ft = 1 Inch.



LAVACA COUNTY.

No 4.



Scale 500 vs = 1. Inch.

County 65-116

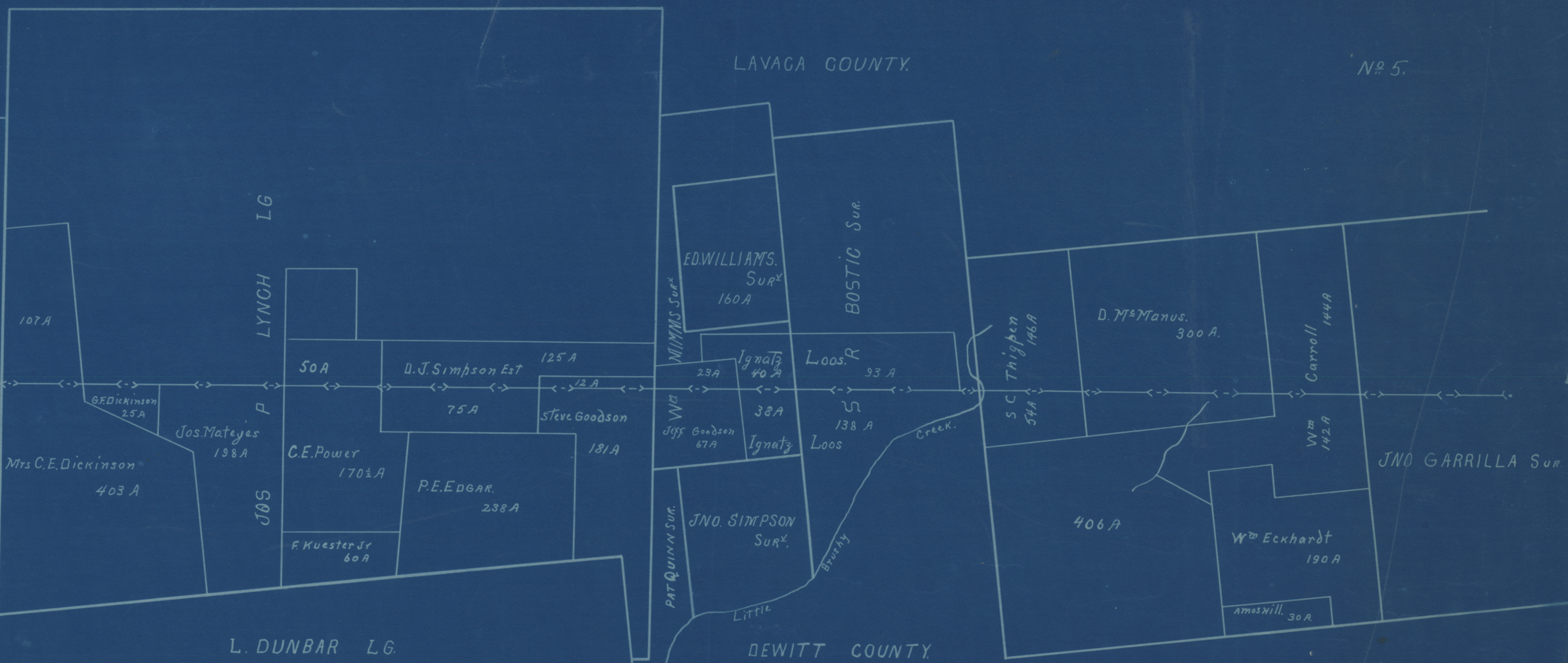


LAVAGA COUNTY.

Nº 5.

WINFIELD ALFORD L.G.

LYNCH LG



Mrs C.E. Dickinson  
403 A

Jos. Matejes  
198 A

C.E. Power  
170 1/2 A

P.E. EDGAR.  
238 A

JNO. SIMPSON  
SUR.  
138 A

JNO GARRILLA SUR

L. DUNBAR LG.

DEWITT COUNTY.

Scale 500vs = 1 Inch.

ED. WILLIAMS.  
SUR.  
160 A

Ignatz  
40 A

Jeff Goodson  
67 A

JNO. SIMPSON  
SUR.  
138 A

D. M<sup>rs</sup> Manus.  
300 A.

Wm Eckhardt  
190 A

Amos Will.  
30 A.

S C Thigpen  
146 A  
54 A

Carroll  
144 A  
142 A

PAT QUINN SUR.

LITTLE  
BRUSHY

Loos. R  
93 A

Loos  
138 A

MIMMS SUR.  
160 A

Loos. R  
93 A

Loos  
138 A

LITTLE  
BRUSHY