

Comal Co. 658796

J. SCOTT 27

MON. No. 9.

I. LOWE

Stone Mound & Bearing trees, Hays Co. Minutes of Com'rs Court 'Bk C Page 193, Nov. 14, 1881.
Two Live Oaks near each other one 14" diameter, now estimated 24", marked X
Bears N 32° W 44.3 vrs
New 12" Double Live Oak N 55° 15' W 29 vrs
10" Live Oak N 0° 45' W 16 vrs

MON. No. 8.

MON. No. 7.

MON. No. 6.

MON. No. 5.

MON. No. 4.

MON. No. 3.

MON. No. 2A.

MON. No. 2.

MON. No. 1.

Checked as 7 Miles from the Thompson League
Corner on South bank of Guadalupe River.

C O M A L C O U N T Y
S A M ' L C R A F T V A N H O R N

C O C O S H A Y S H

COUNTY COMMISSIONERS' COURT OF COMAL COUNTY, TEXAS.

COUNTY COMMISSIONERS' COURT OF HAYS COUNTY, TEXAS.

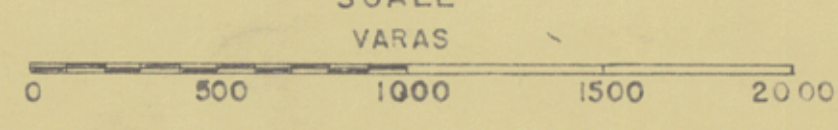
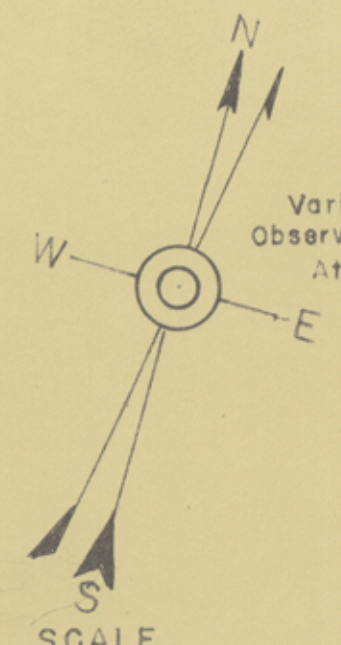
COUNTY JUDGE	_____
COMMISSIONER PRECINCT No 1	_____
" " 2	_____
" " 3	_____
" " 4	_____
COUNTY CLERK	_____

COUNTY JUDGE	_____
COMMISSIONER PRECINCT No 1	_____
" " 2	_____
" " 3	_____
" " 4	_____
COUNTY CLERK	_____

APPROVED _____

LICENSED STATE LAND SURVEYOR
Austin, Texas.

SURVEYED AND MAPPED August, 1947 by



BLANCO CO.

COMAL COUNTY HAYS COUNTY

MONUMENT Square, concrete block, anchored in the middle of Little Blanco

MON No 27 On southeast slope of hill on line with fence between A. Fraiser & R. Fraiser

MON No 26 South of drive W. west of road

MON No 25 Top of SW to NE ridge north of Horton windmill B. goodhead

MON No 24 NE slope of high hill in SW corner Burnett Bros 55 yrs from where flat top breaks into slope

MON No 23 Padi-Fisher fence, 1105 yrs south of fence corner for Fisher NE corner.

MON No 22 SW end of high, flat top hill in Peck's pasture

MON No 21

NOTE: No work was done to verify relation of fence lines to original survey corners.

MON No 20

NOTE: Position of corner lines in J. Rice approximated from aerial picture. Record survey field notes incomplete. Need survey to get actual acreage.

MON No 19

NOTE: Survey for J.L. Hester does not follow east line of S.A.B. & G.R.R. Respective acreage based on original survey position.

MON No 18

On ridge saddle, clear view to backbone

MON No 17

On sharp ridge, about 156 yrs S.W. of peak of hill

MON No 16

Backbone

MON No 15

Fence line

MON No 14

Green Road, top of hill

MON No 13

Stoopler-Possy fences

MON No 12

W. of windmill near Fr. Possy house

MON No 11

Wegner-Possy fence

MON No 10

On SW to NE ridge

MON No 9

At Wegner-Williamson line

MON No 8

Strait line between Mon 8 & Blanco River

COUNTY COMMISSIONERS' COURT OF COMAL COUNTY, TEXAS. COUNTY JUDGE Clarence W. Rice. COMMISSIONER PRECINCT NO. 1 Hugo J. Jansen. 2 Eugene H. Johnson. 3 Ernest Brattler. 4 Edgar J. Johnson. APPROVED Sept. 10, 1947. SURVEYED AND MAPPED AUGUST, 1947 BY Samuel C. Hollenberry, LICENSED STATE LAND SURVEYOR, AUSTIN, TEXAS.

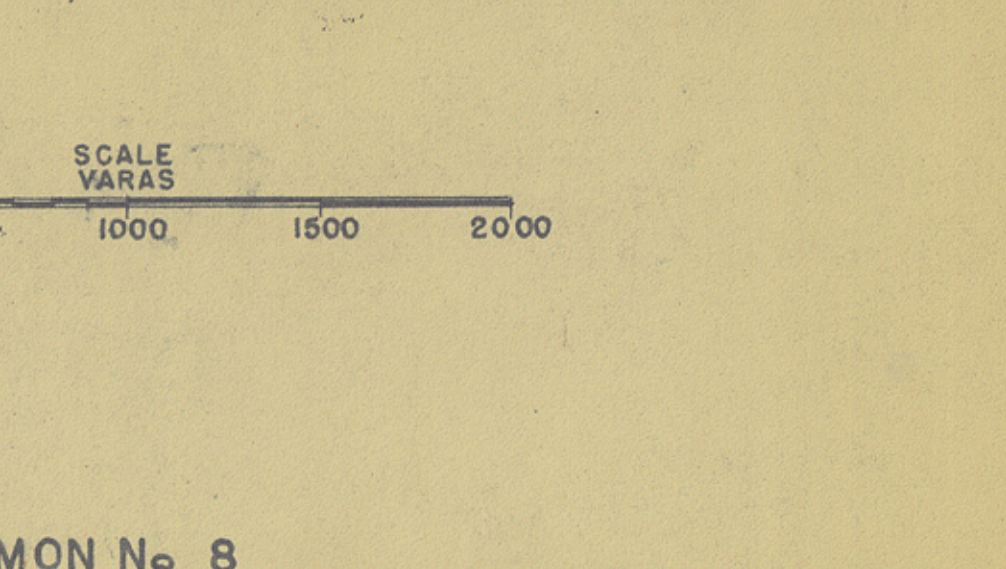
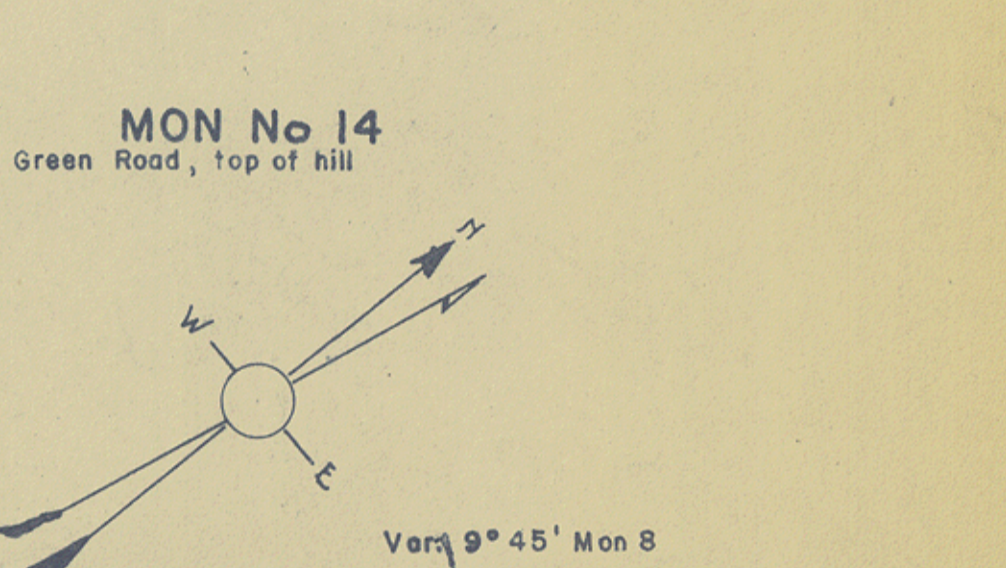
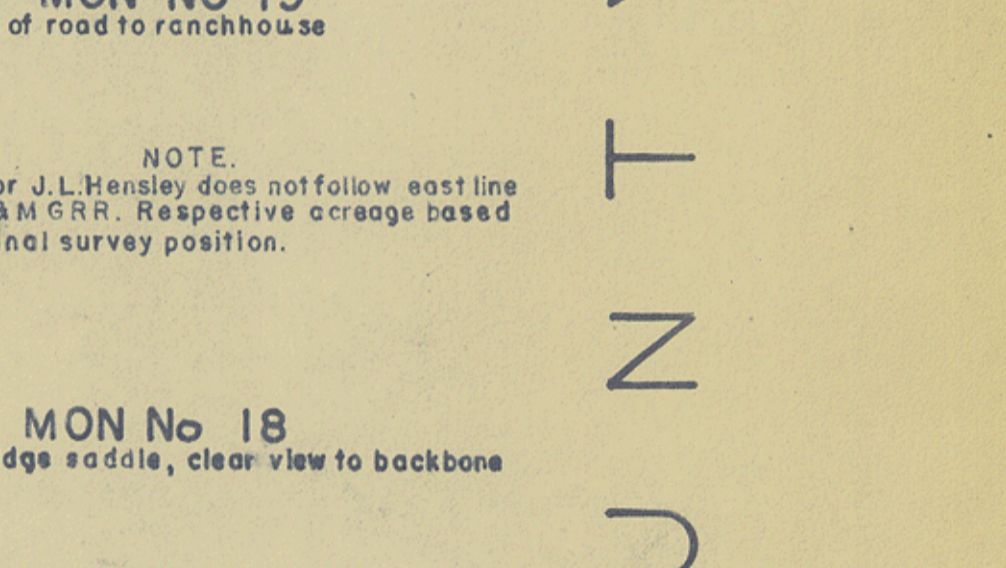
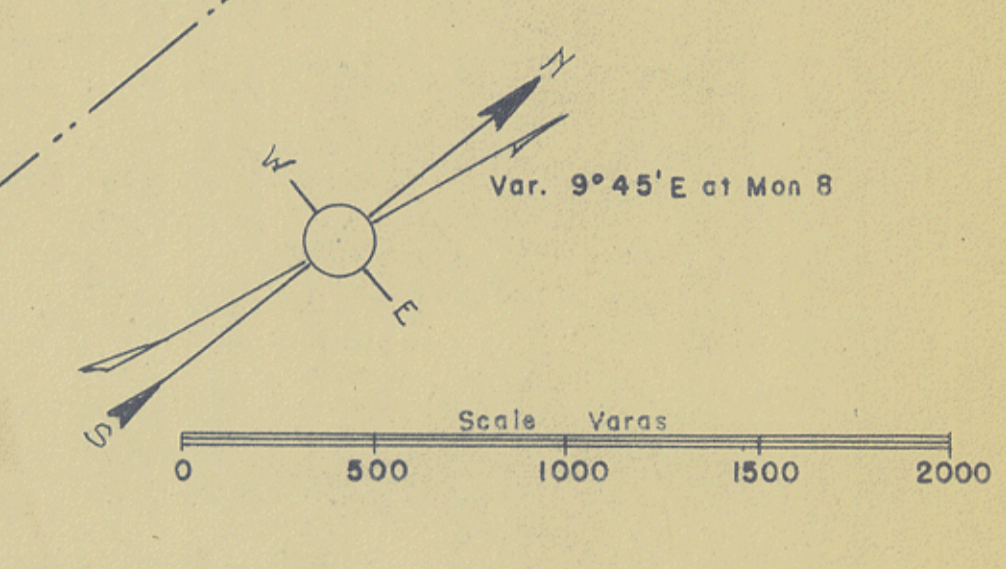
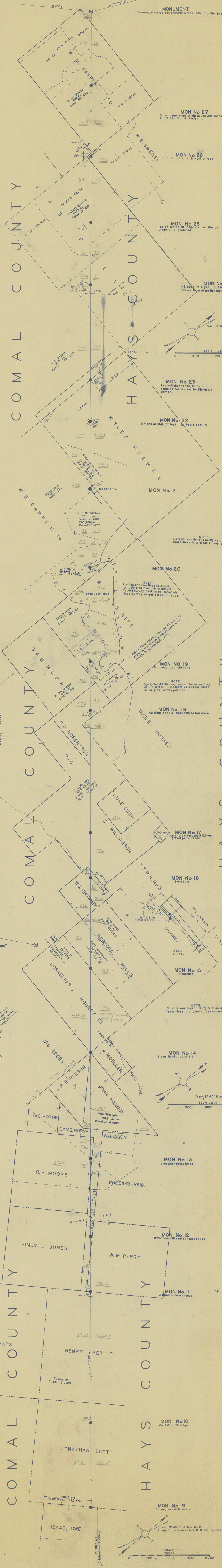
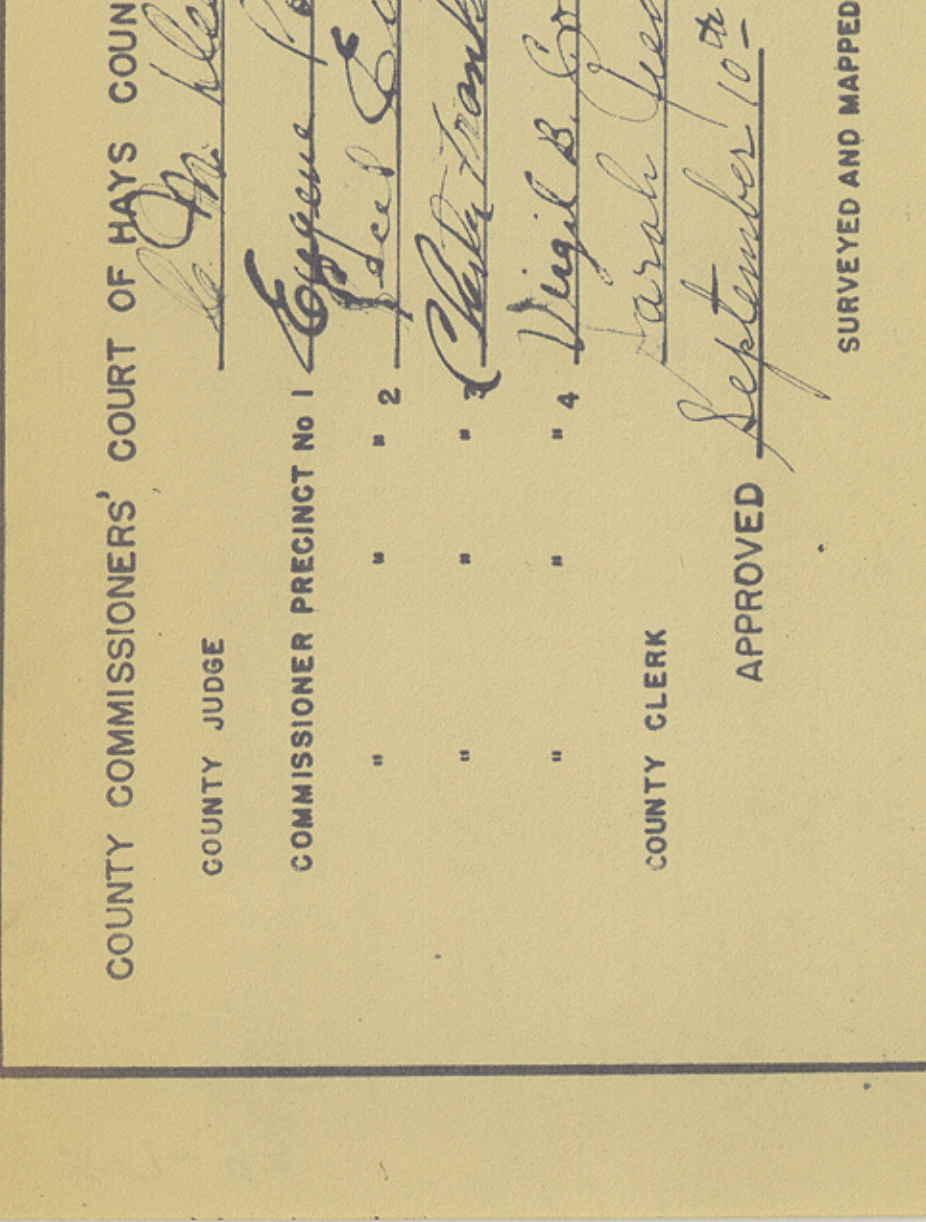
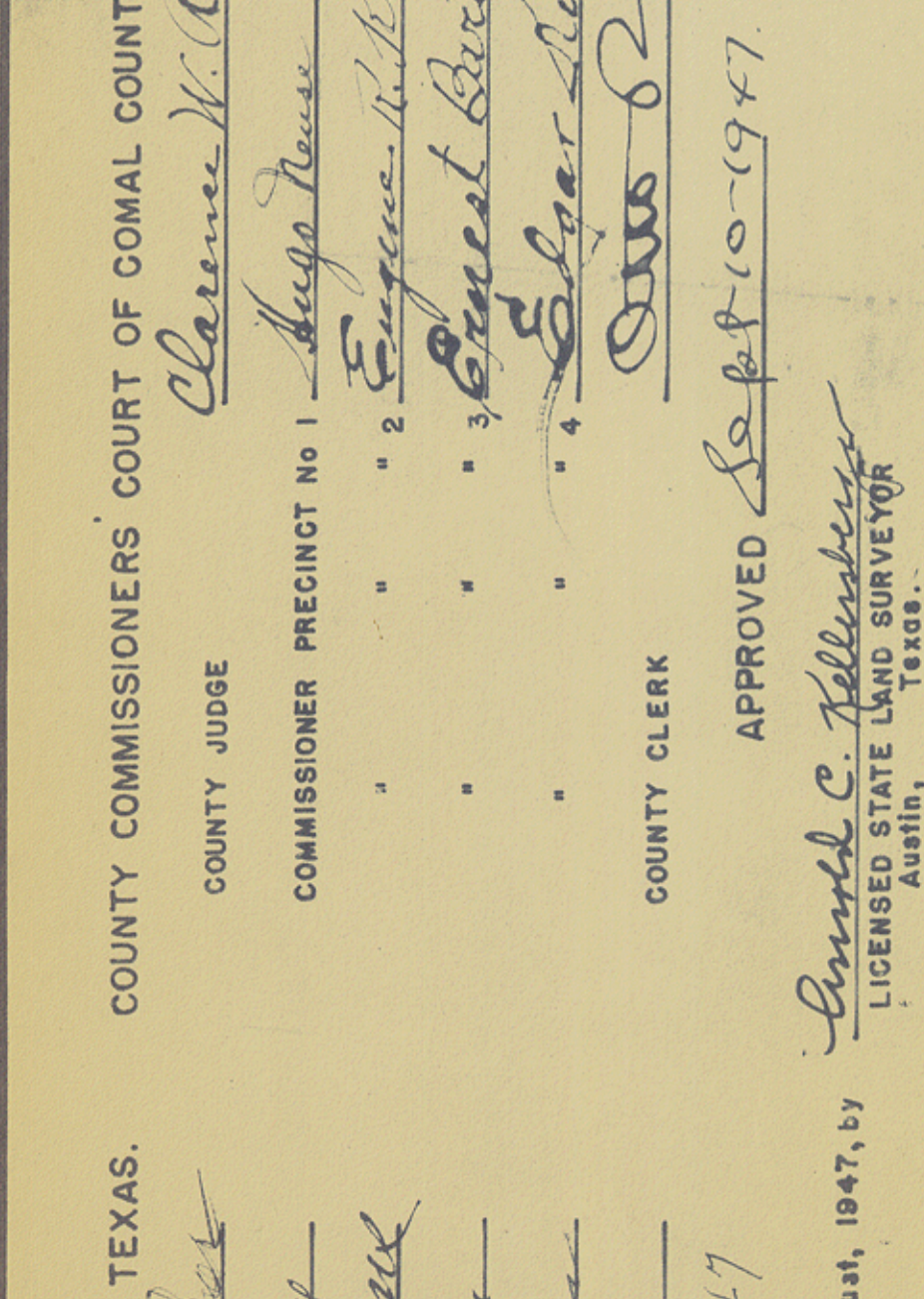
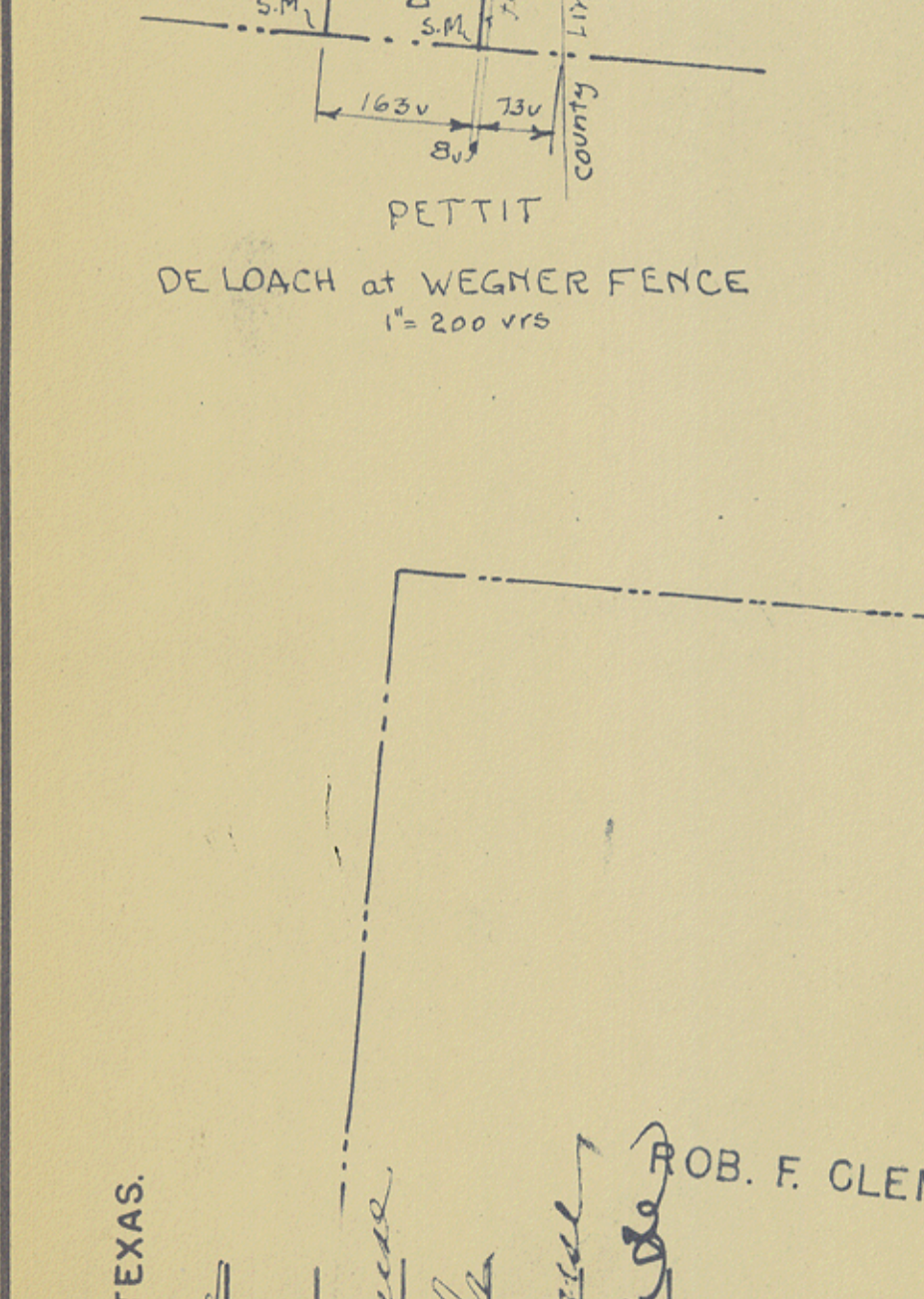
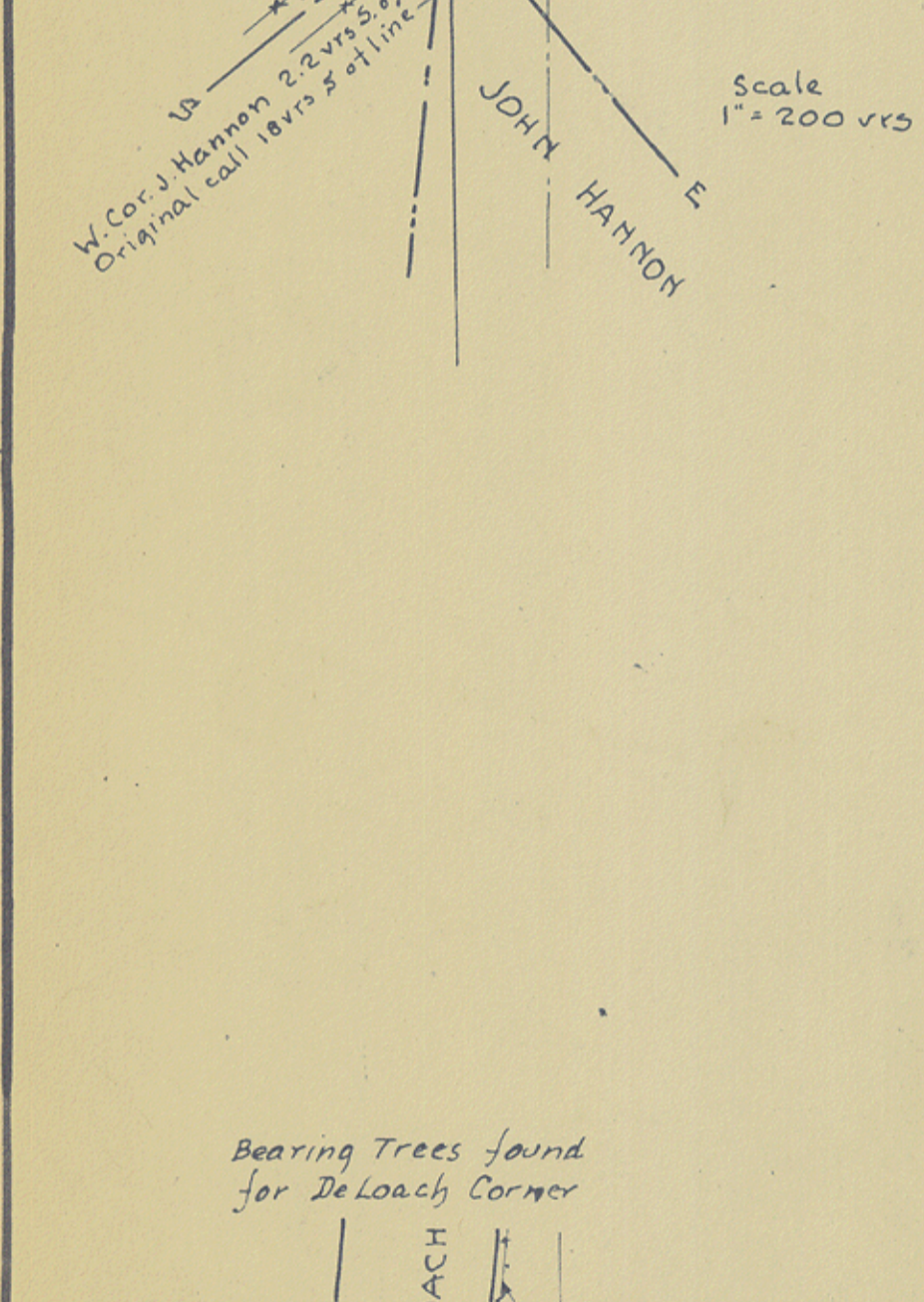
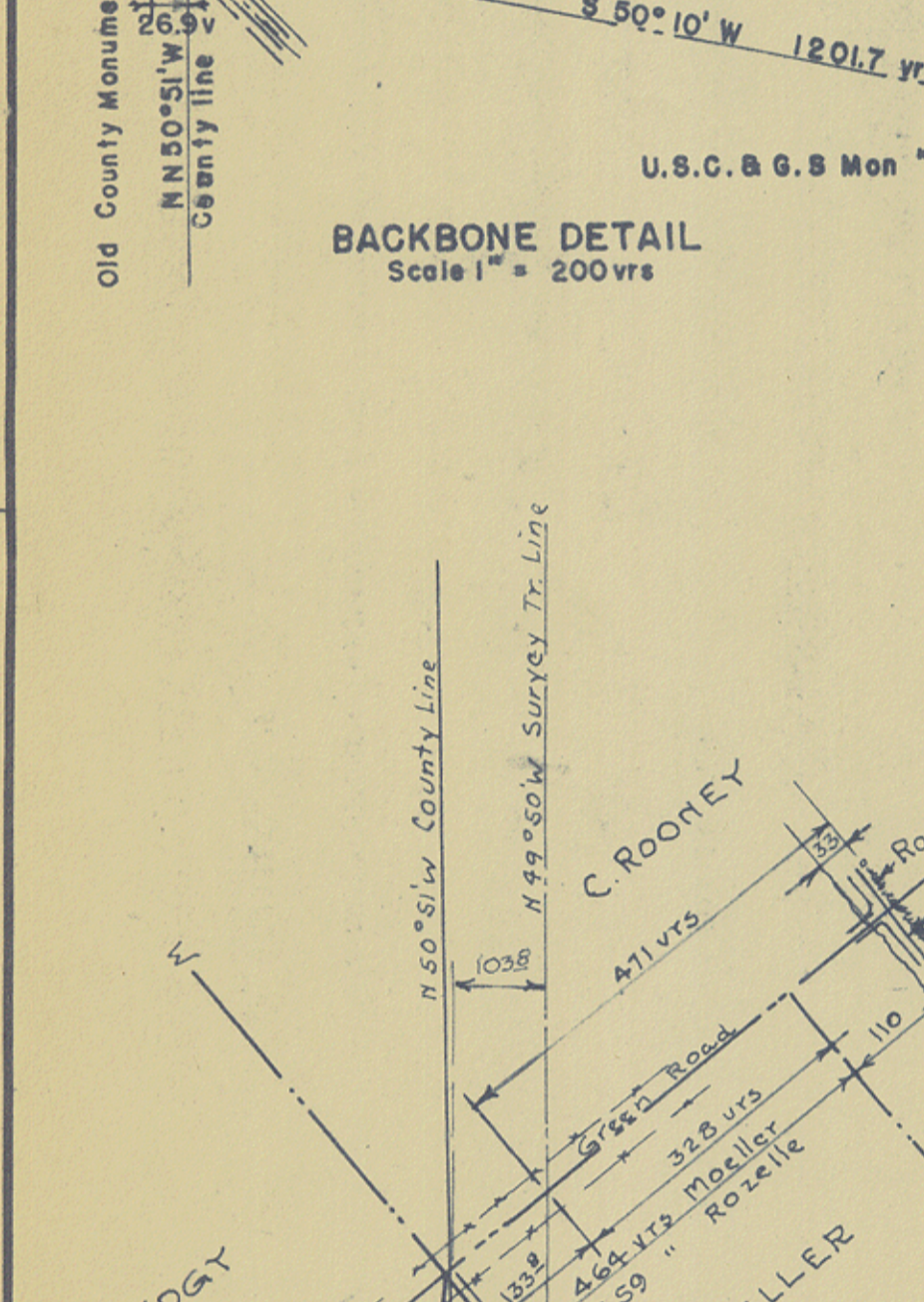
COUNTY COMMISSIONERS' COURT OF HAYS COUNTY, TEXAS. COUNTY JUDGE W. J. Lechner. COMMISSIONER PRECINCT NO. 1 Eugene J. Jansen. 2 Louis E. Jansen. 3 Ernest Brattler. 4 Edgar J. Johnson. APPROVED September 10, 1947. SURVEYED AND MAPPED AUGUST, 1947 BY Samuel C. Hollenberry, LICENSED STATE LAND SURVEYOR, AUSTIN, TEXAS.

COUNTY COMMISSIONERS' COURT OF COMAL COUNTY, TEXAS. COUNTY JUDGE Clarence W. Rice. COMMISSIONER PRECINCT NO. 1 Hugo J. Jansen. 2 Eugene H. Johnson. 3 Ernest Brattler. 4 Edgar J. Johnson. APPROVED Sept. 10, 1947. SURVEYED AND MAPPED AUGUST, 1947 BY Samuel C. Hollenberry, LICENSED STATE LAND SURVEYOR, AUSTIN, TEXAS.

COUNTY COMMISSIONERS' COURT OF HAYS COUNTY, TEXAS. COUNTY JUDGE W. J. Lechner. COMMISSIONER PRECINCT NO. 1 Eugene J. Jansen. 2 Louis E. Jansen. 3 Ernest Brattler. 4 Edgar J. Johnson. APPROVED September 10, 1947. SURVEYED AND MAPPED AUGUST, 1947 BY Samuel C. Hollenberry, LICENSED STATE LAND SURVEYOR, AUSTIN, TEXAS.

COUNTY COMMISSIONERS' COURT OF COMAL COUNTY, TEXAS. COUNTY JUDGE Clarence W. Rice. COMMISSIONER PRECINCT NO. 1 Hugo J. Jansen. 2 Eugene H. Johnson. 3 Ernest Brattler. 4 Edgar J. Johnson. APPROVED Sept. 10, 1947. SURVEYED AND MAPPED AUGUST, 1947 BY Samuel C. Hollenberry, LICENSED STATE LAND SURVEYOR, AUSTIN, TEXAS.

COUNTY COMMISSIONERS' COURT OF HAYS COUNTY, TEXAS. COUNTY JUDGE W. J. Lechner. COMMISSIONER PRECINCT NO. 1 Eugene J. Jansen. 2 Louis E. Jansen. 3 Ernest Brattler. 4 Edgar J. Johnson. APPROVED September 10, 1947. SURVEYED AND MAPPED AUGUST, 1947 BY Samuel C. Hollenberry, LICENSED STATE LAND SURVEYOR, AUSTIN, TEXAS.



44859

2

3

2

2

3

2

2

J. SCOTT 27

MON. No. 9.

I. LOWE

Stone Mound bearing trees, Hays Co. Minutes of Com'rs Court 'Bk C Page 193, Nov. 14, 1881.
Two Live Oaks near each other one 14" diameter, now estimated 24", marked X
bears N 32° W 44.3 vrs
New 12" Double Live Oak N 55° 15' W 29 vrs
" 10" Live Oak N 0° 45' W 16 vrs

MON. No. 8.

MON. No. 7.

MON. No. 6.

MON. No. 5.

MON. No. 4.

MON. No. 3.

MON. No. 2A.

MON. No. 2.

MON. No. 1.

Checked as 7 Miles from the Thompson League
Corner on South bank of Guadalupe River.

C O M A L C O U N T Y
S A M ' L C R A F T
V A N H O R N

C O C O S H A Y S H

COUNTY COMMISSIONERS' COURT OF COMAL COUNTY, TEXAS.

COUNTY JUDGE	<i>Clarence W. Rice</i>
COMMISSIONER PRECINCT No. 1	<i>Angus Fourn</i>
" 2	<i>Eugene R. Krause</i>
" 3	<i>Conest Brubaker</i>
" 4	<i>Edgar Arnold</i>
COUNTY CLERK	<i>Wm. G. Baker</i>

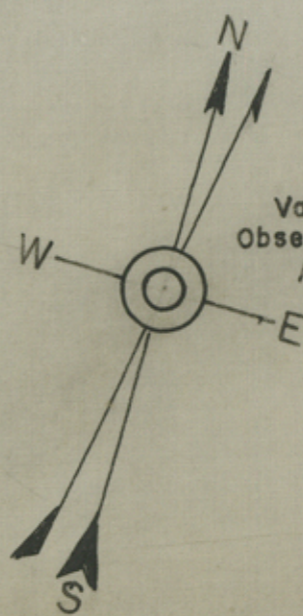
Arnold C. Kellerman
LICENSED STATE LAND SURVEYOR
Austin, Texas.

COUNTY COMMISSIONERS' COURT OF HAYS COUNTY, TEXAS.

COUNTY JUDGE	<i>Wm. Blecher</i>
COMMISSIONER PRECINCT No. 1	<i>Eugene Fourn</i>
" 2	<i>Leas Evans</i>
" 3	<i>Charla Franklin</i>
" 4	<i>Wm. C. Coyne</i>
COUNTY CLERK	<i>Ward Seed</i>

APPROVED
September 10 - 1947

SURVEYED AND MAPPED August, 1947 by



Variation 9° 45'
Observation Polaris June, 1947.
At Monument No. 1.

SCALE
VARAS
0 500 1000 1500 2000

A. M. E. Z. N. A. U. R. I. Z. A. R.

COMAL CO.
GUADALUPE CO.

17-12-4P-7-71

COUNTY COMMISSIONERS' COURT OF HAYS COUNTY, TEXAS.
 COUNTY JUDGE *Wm. Weeber*
 COMMISSIONER PRECINCT No 1 *Eugene Perry*
 " 2 *David Evans*
 " 3 *Chas. Franklin*
 " 4 *Vergil B. Coome*
 COUNTY CLERK *Sarah Reed*
 APPROVED *September 10th 1947*

COUNTY COMMISSIONERS' COURT OF COMAL COUNTY, TEXAS.
 COUNTY JUDGE *Clarence W. Rice*
 COMMISSIONER PRECINCT No 1 *Hugo Neun*
 " 2 *Eugene R. Krause*
 " 3 *Ernest Bartels*
 " 4 *Edgar Kierme*
 COUNTY CLERK *Otto Rohde*
 APPROVED *Sept 10-1947*

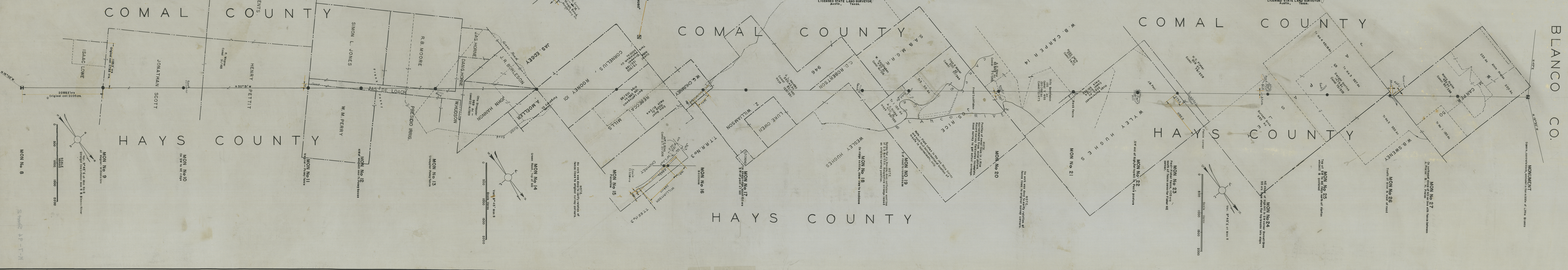
COUNTY COMMISSIONERS' COURT OF COMAL COUNTY, TEXAS. COUNTY COMMISSIONERS' COURT OF HAYS COUNTY, TEXAS.
 COUNTY JUDGE *Clarence W. Rice* COUNTY JUDGE *Wm. Weeber*
 COMMISSIONER PRECINCT No 1 *Hugo Neun* COMMISSIONER PRECINCT No 1 *Eugene Perry*
 " 2 *Eugene R. Krause* " 2 *David Evans*
 " 3 *Ernest Bartels* " 3 *Chas. Franklin*
 " 4 *Edgar Kierme* " 4 *Vergil B. Coome*
 COUNTY CLERK *Otto Rohde* COUNTY CLERK *Sarah Reed*
 APPROVED *Sept 10, 1947.* APPROVED *September 10th 1947*

COUNTY COMMISSIONERS' COURT OF HAYS COUNTY, TEXAS. COUNTY COMMISSIONERS' COURT OF COMAL COUNTY, TEXAS.
 COUNTY JUDGE *Wm. Weeber* COUNTY JUDGE *Clarence W. Rice*
 COMMISSIONER PRECINCT No 1 *Eugene Perry* COMMISSIONER PRECINCT No 1 *Hugo Neun*
 " 2 *David Evans* " 2 *Eugene R. Krause*
 " 3 *Chas. Franklin* " 3 *Ernest Bartels*
 " 4 *Vergil B. Coome* " 4 *Edgar Kierme*
 COUNTY CLERK *Sarah Reed* COUNTY CLERK *Otto Rohde*
 APPROVED *September 10th 1947* APPROVED *Sept 10, 1947.*

SURVEYED AND MAPPED August, 1947, by *Arnold C. Killenburger*
 LICENSED STATE LAND SURVEYOR
 Austin, Texas.

SURVEYED AND MAPPED August, 1947 by *Arnold C. Killenburger*
 LICENSED STATE LAND SURVEYOR
 Austin, Texas.

SURVEYED AND MAPPED August, 1947 by *Arnold C. Killenburger*
 LICENSED STATE LAND SURVEYOR
 Austin, Texas.



SCALE
 0 500 1000 1500 2000
 MON No. 8
 At corner of Section 10
 NE 1/4 Sec 10, T. 12 N., R. 10 E., S. 10 W.

SCALE
 0 500 1000 1500 2000
 MON No. 9
 At corner of Section 10
 NE 1/4 Sec 10, T. 12 N., R. 10 E., S. 10 W.

SCALE
 0 500 1000 1500 2000
 MON No. 10
 At corner of Section 10
 NE 1/4 Sec 10, T. 12 N., R. 10 E., S. 10 W.

SCALE
 0 500 1000 1500 2000
 MON No. 11
 At corner of Section 10
 NE 1/4 Sec 10, T. 12 N., R. 10 E., S. 10 W.

SCALE
 0 500 1000 1500 2000
 MON No. 12
 At corner of Section 10
 NE 1/4 Sec 10, T. 12 N., R. 10 E., S. 10 W.

SCALE
 0 500 1000 1500 2000
 MON No. 13
 At corner of Section 10
 NE 1/4 Sec 10, T. 12 N., R. 10 E., S. 10 W.

SCALE
 0 500 1000 1500 2000
 MON No. 14
 At corner of Section 10
 NE 1/4 Sec 10, T. 12 N., R. 10 E., S. 10 W.

SCALE
 0 500 1000 1500 2000
 MON No. 15
 At corner of Section 10
 NE 1/4 Sec 10, T. 12 N., R. 10 E., S. 10 W.

SCALE
 0 500 1000 1500 2000
 MON No. 16
 At corner of Section 10
 NE 1/4 Sec 10, T. 12 N., R. 10 E., S. 10 W.

SCALE
 0 500 1000 1500 2000
 MON No. 17
 At corner of Section 10
 NE 1/4 Sec 10, T. 12 N., R. 10 E., S. 10 W.

SCALE
 0 500 1000 1500 2000
 MON No. 18
 At corner of Section 10
 NE 1/4 Sec 10, T. 12 N., R. 10 E., S. 10 W.

SCALE
 0 500 1000 1500 2000
 MON No. 19
 At corner of Section 10
 NE 1/4 Sec 10, T. 12 N., R. 10 E., S. 10 W.

SCALE
 0 500 1000 1500 2000
 MON No. 20
 At corner of Section 10
 NE 1/4 Sec 10, T. 12 N., R. 10 E., S. 10 W.

SCALE
 0 500 1000 1500 2000
 MON No. 21
 At corner of Section 10
 NE 1/4 Sec 10, T. 12 N., R. 10 E., S. 10 W.

SCALE
 0 500 1000 1500 2000
 MON No. 22
 At corner of Section 10
 NE 1/4 Sec 10, T. 12 N., R. 10 E., S. 10 W.

SCALE
 0 500 1000 1500 2000
 MON No. 23
 At corner of Section 10
 NE 1/4 Sec 10, T. 12 N., R. 10 E., S. 10 W.

SCALE
 0 500 1000 1500 2000
 MON No. 24
 At corner of Section 10
 NE 1/4 Sec 10, T. 12 N., R. 10 E., S. 10 W.

SCALE
 0 500 1000 1500 2000
 MON No. 25
 At corner of Section 10
 NE 1/4 Sec 10, T. 12 N., R. 10 E., S. 10 W.

SCALE
 0 500 1000 1500 2000
 MON No. 26
 At corner of Section 10
 NE 1/4 Sec 10, T. 12 N., R. 10 E., S. 10 W.

SCALE
 0 500 1000 1500 2000
 MON No. 27
 At corner of Section 10
 NE 1/4 Sec 10, T. 12 N., R. 10 E., S. 10 W.

SCALE
 0 500 1000 1500 2000
 MON No. 28
 At corner of Section 10
 NE 1/4 Sec 10, T. 12 N., R. 10 E., S. 10 W.

SCALE
 0 500 1000 1500 2000
 MON No. 29
 At corner of Section 10
 NE 1/4 Sec 10, T. 12 N., R. 10 E., S. 10 W.