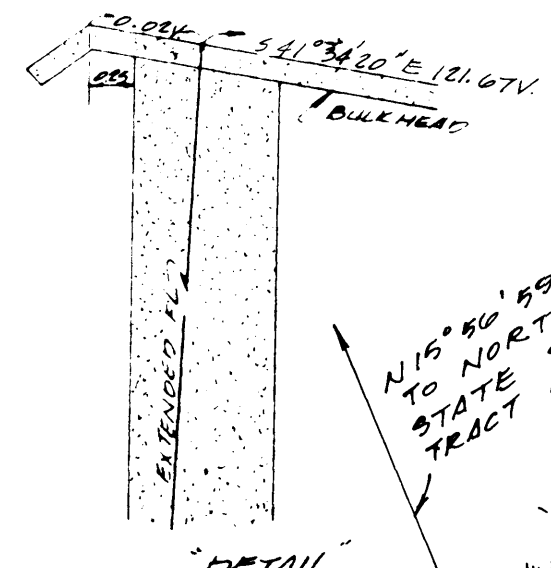
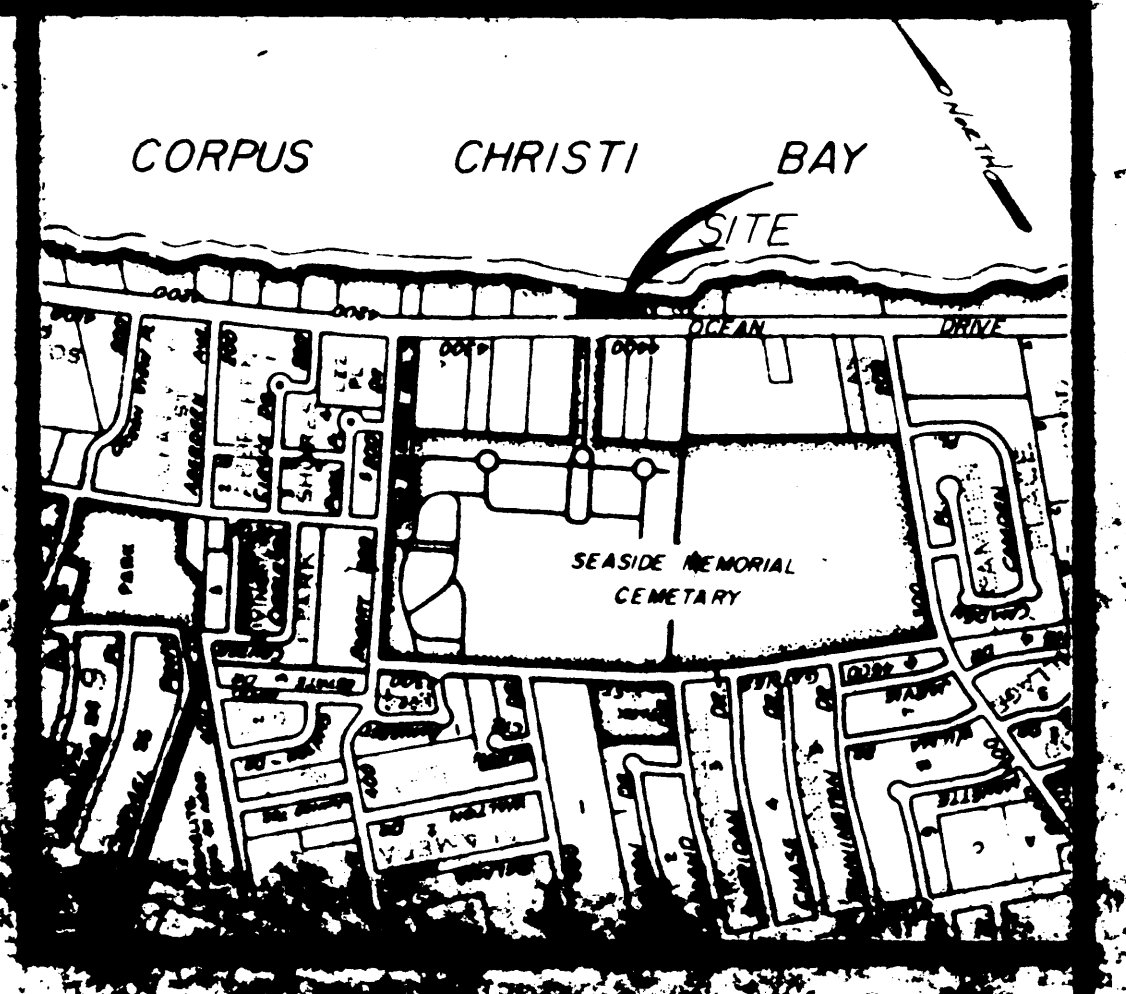


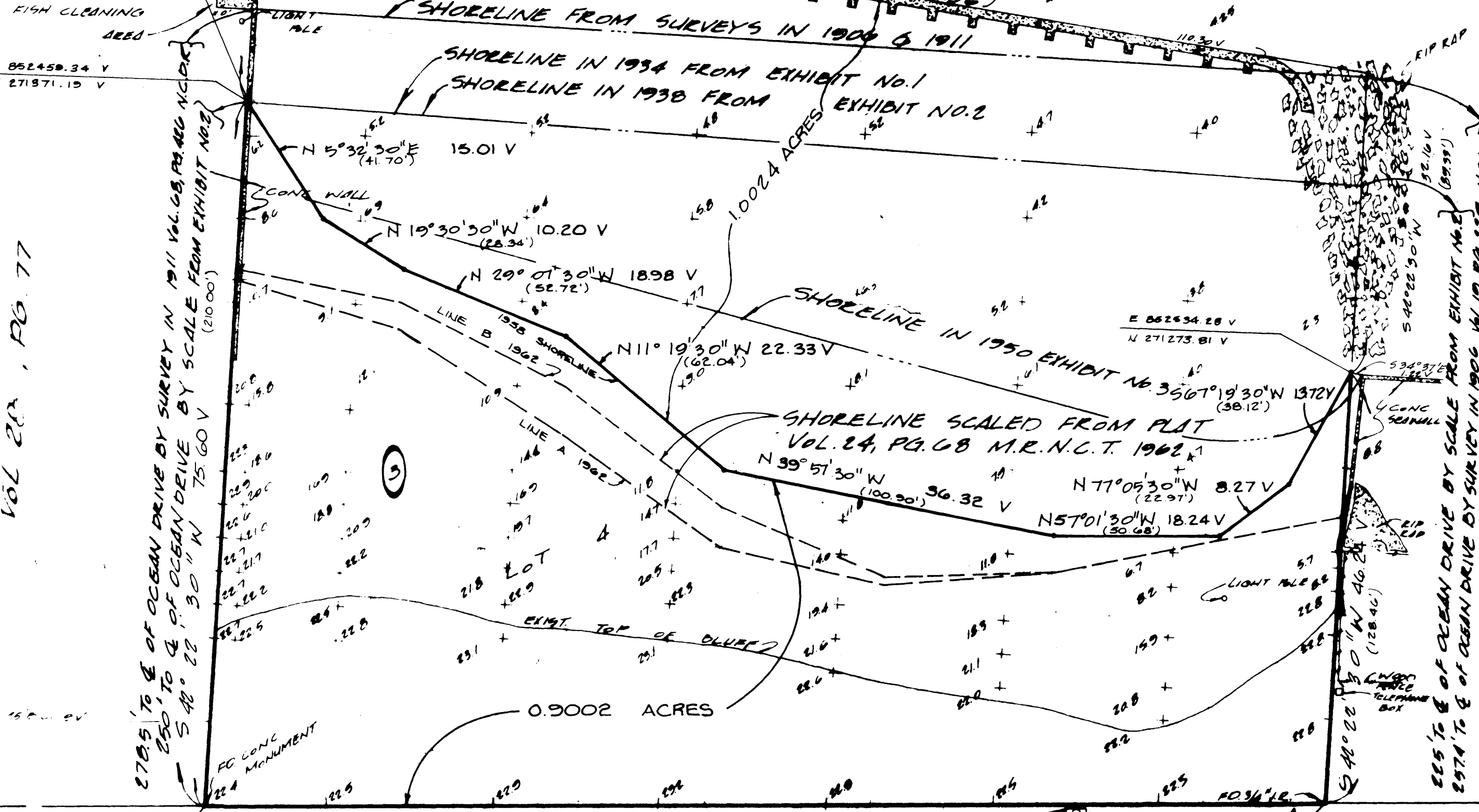
09921 6/7

FILED 15-58-85 BY 260 JPL
10054 AS LITZ MARCUS LUTZ BLOCK 3
VOL 24 PG 68 COMPLY NOTED SKETCH NO. 82



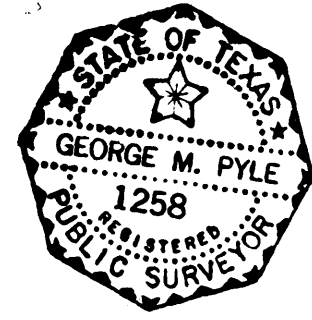
(GRID NORTH)
TEXAS COORDINATE
SYSTEM
ANGLE BETWEEN GRID
NORTH AND TRUE NORTH
16 00' 31" 00" AT 3/4 INCH
IRON ROD AT THE SOUTH
CORNER OF LOT 4, BLOCK 3

MARCUS LUTZ
LOT 3 BLOCK 3
SEASIDE SUBDIVISION
VOL 24, PG 77



Note:
BEARINGS AND COORDINATES
BASED ON THE TEXAS COORDINATE
SYSTEM - SOUTH ZONE.

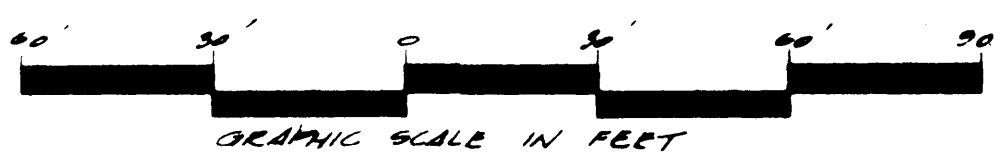
E 862,408.30 V
(2,307,001.00)
(155,253.71)
N 27,315.84 V



STATE OF TEXAS
COUNTY OF NUECES

I, GEORGE M. PYLE, LICENSED STATE LAND
SURVEYOR DO HEREBY CERTIFY THAT THE
FOREGOING SURVEY WAS MADE BY ME ON THE
GROUND AND THE LIMITS, BOUNDARIES, AND CORNERS,
NATURAL AND ARTIFICIAL ARE TRULY DESCRIBED
HEREON.

BY: George M. Pyle 12-28-82
R.P.S.-L.S.L.S.



REV. BY	DATE	DESCRIPTION	APPROVED
URBAN ENGINEERING CORPUS CHRISTI, TEXAS			
SURVEY OF 1.0024 ACRES OUT OF CORPUS CHRISTI BAY TRACT NO. 75 ADJACENT TO LOT 4, BLOCK 3,			
SEASIDE SUBDIVISION, A MAP OF WHICH IS RECORDED IN VOL. 24, PG. 68, MAP RECORDS OF NUECES COUNTY, TEXAS			
DRAWN BY: <u>E.P.</u> SCALE: 1"=30'		JOB NO: 12470	
CHKD BY: <u>J.M.</u> DATE: 11-5-82		SHEET: ONE OF ONE	

RECEIVED
DEC 29 1982

NO. 4



Old seawall on natural shoreline

Seawall

Boat Launch

SITE

Tobin

Tobin Research, Inc.

12-3-1958

584-18

112-500

2-7-50

45

BRE-2G-199



1226

No. 1

1231-2-17

SITE

Tobin Research, Inc

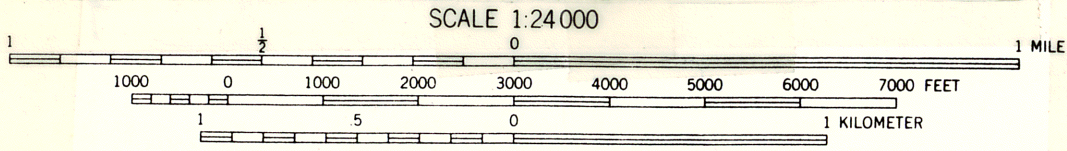
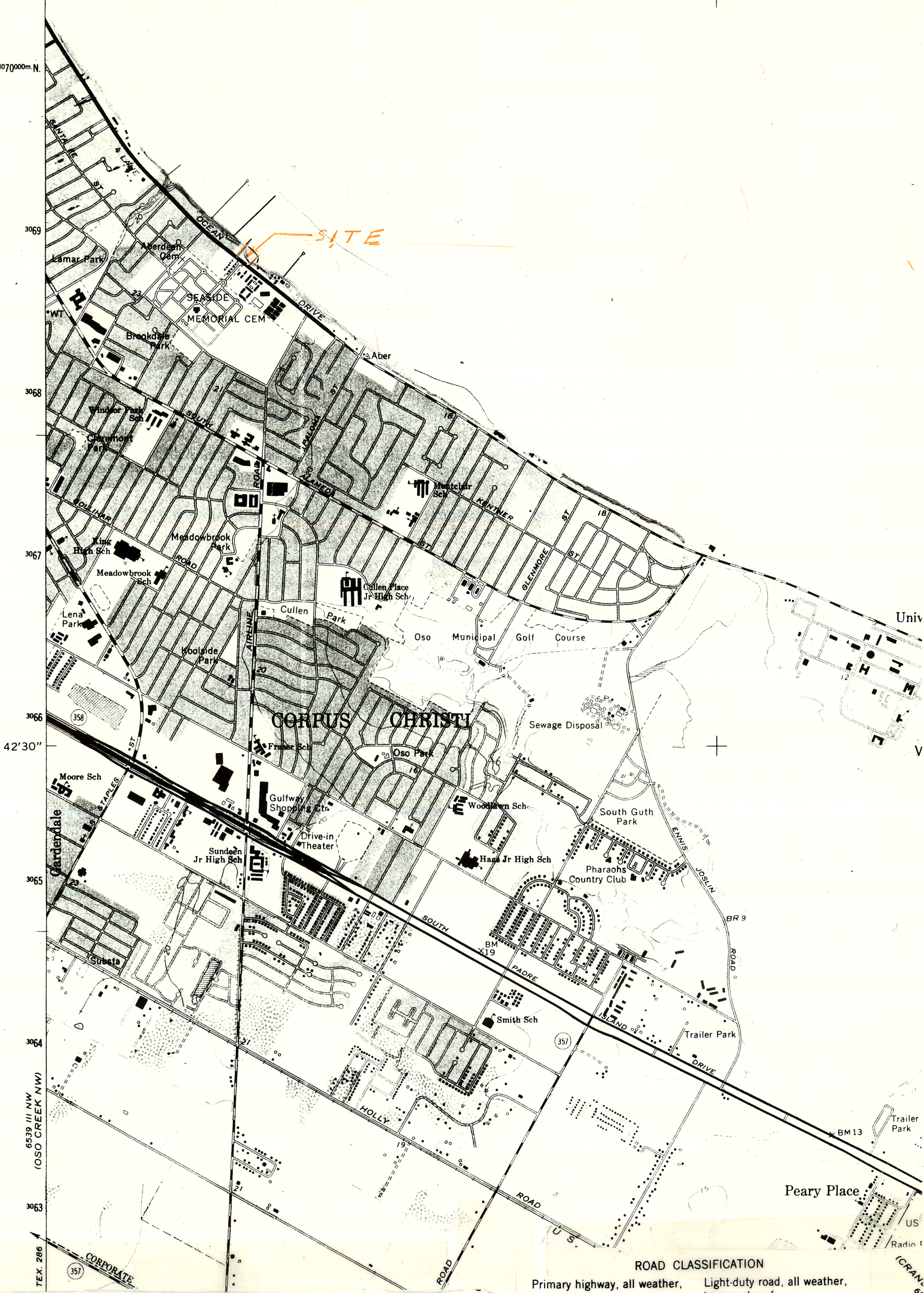
2-15-1934

1231-2-17

1" = 500'

UNITED STATES
DEPARTMENT OF THE INTERIOR
GEOLOGICAL SURVEY

97°22'30" 661000m.E. 662 663 664 20' 665



CONTOUR INTERVAL 5 FEET
NATIONAL GEODETIC VERTICAL DATUM OF 1929
DEPTH CURVES AND SOUNDINGS IN FEET—DATUM IS MEAN LOW WATER
SHORELINE SHOWN REPRESENTS THE APPROXIMATE LINE OF MEAN HIGH WATER
THE MEAN RANGE OF TIDE IS NEGLIGIBLE

ROAD CLASSIFICATION
Primary highway, all weather, hard surface ————
Secondary highway, all weather, hard surface ————
Light-duty road, all weather, improved surface ————
Unimproved road, fair or dry weather ————
State Route

OSO CREEK NE, TE
NE/4 OSO CREEK 15' QUADRANG
N2737.5—W9715/7.5

THIS MAP COMPLIES WITH NATIONAL MAP ACCURACY STANDARDS
FOR SALE BY U. S. GEOLOGICAL SURVEY, DENVER, COLORADO 80225, OR RESTON, VIRGINIA 22092
A FOLDER DESCRIBING TOPOGRAPHIC MAPS AND SYMBOLS IS AVAILABLE ON REQUEST

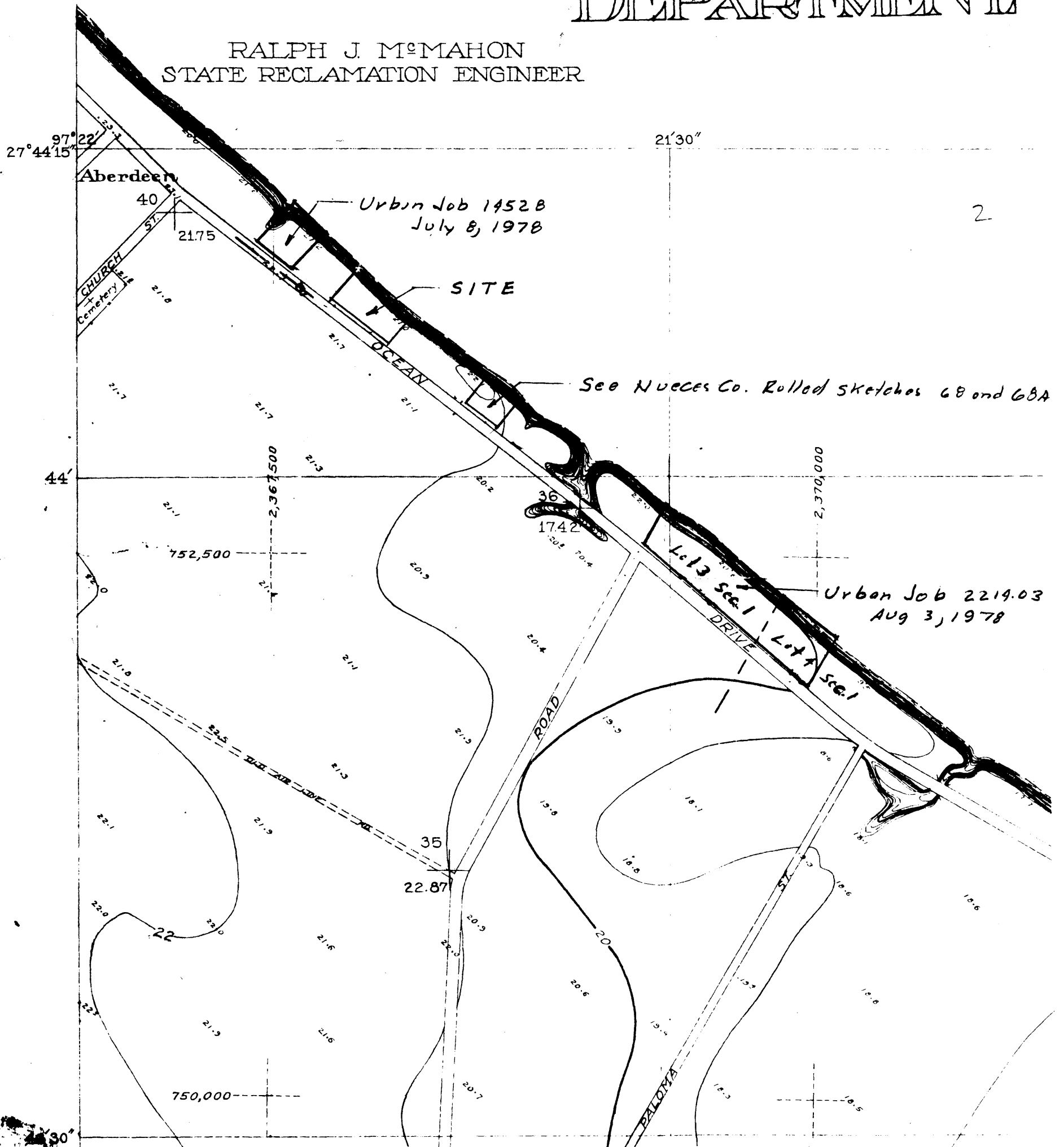
1968
PHOTOREVISED 197F
AMS 6539 III NE—SERIES

NO. 2

RECLAMATION DEPARTMENT

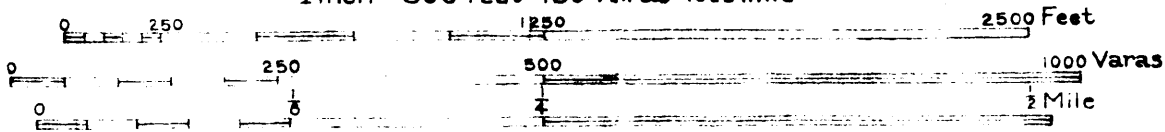
1938

RALPH J. McMAHON
STATE RECLAMATION ENGINEER



Scale: $\frac{1}{5000}$

1 inch = 500 Feet = 180 varas = $\frac{35}{1000}$ mile



Contour interval 1 foot.
Datum is mean sea level.

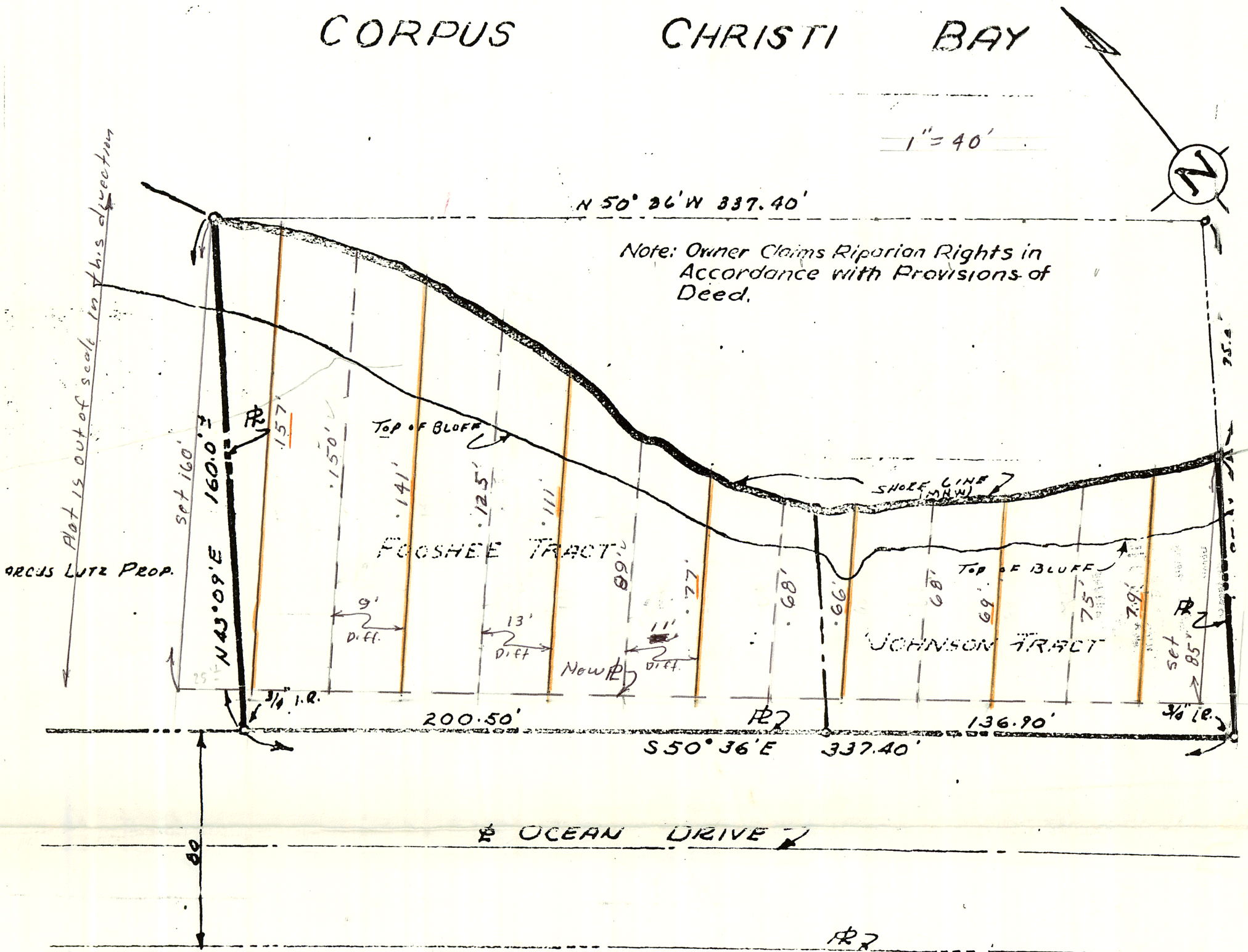
STATE PLANE COORDINATES
BASED ON LAMBERT GRID.

Topography by R. C. Wisdom and E. M. Greenwood in 1938.
 Primary Traversing by Curtis R. Hale in 1938.
 Leveling by E. M. Greenwood in 1938.
 Traced and Lettered by Eltea Armstrong in 1938.
 Surveyed in cooperation with the City of Corpus Christi.

(Sheet No. 5)

CORPUS CHRISTI SHEET NO. 6
NUECES COUNTY

CORPUS CHRISTI BAY



**MAP OF
LOT 4, BLOCK 3
SEASIDE SUBDIVISION**
OUT OF A PORTION OF SEASIDE CAMP MEETING GROUNDS SUBDIVISION
WHICH LIES BETWEEN THE S.E. BOUNDARY LINE OF OCEAN DRIVE RD. & CORPUS
CHRISTI BAY AND LIES WITHIN THE CITY LIMITS OF CORPUS CHRISTI, T.
PREPARED BY: A.L. COCK, REG. PROF. ENGR.

STATE OF TEXAS
COUNTY OF NUECES

FILE IN STAMBOOT
FOLDER
"SEASIDE SUBD"

We, Robert C. Kirmse and Marjorie G. Kirmse, hereby certify that we are the owners, subject to lien Johnson and Wynona Montague Neal Fooshee, of the lands shown on this plat and being in the city of Corpus Christi Nu tracts of land as described above being the same as those tracts conveyed to Robert C. Kirmse and wife Marjorie G. Johnson and husband Joe W. Johnson and Wynona Montague Neal Fooshee, Widow, by deeds dated July 6, 1959 and August 1, 1959, in Deed Records of Nueces County, Texas in Volume 858 Page 146 and Volume 862 Page 83, respectively; that we had and platted as shown on the above map and that said map is made for the purpose of description and dedication.

This 26th day of June, 1961.

Robert C. Kirmse
Robert C. Kirmse
Marjorie G. Kirmse
Marjorie G. Kirmse

STATE OF TEXAS
COUNTY OF NUECES

This final plat of the herein described property was approved by the Director of Public Works of the City of Corpus Christi, Texas, on this the 22nd day of JANUARY, 1962.

Jack M. Brada
Director of Public Works

STATE OF TEXAS
COUNTY OF NUECES

This the final plat of the herein described property was approved by the Zoning and Planning Commission of the City of Corpus Christi, Texas; provided, however, this approval shall be invalid and null unless this plat is filed with the County Clerk hereafter.

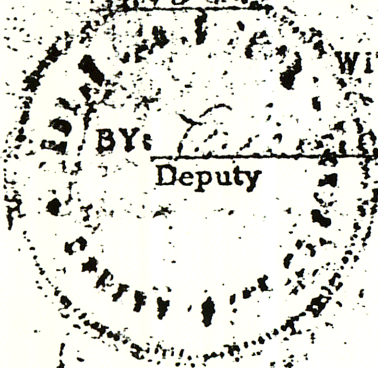
This the 25th day of JANUARY, 1962.

Howard Rogers
Chairman
Earl C. [Signature]
Secretary

STATE OF TEXAS
COUNTY OF NUECES

I, Mrs. Henry E. Gouger, Clerk of the County Court in and for Nueces County, Texas, hereby certify that this plat was filed in my office the 31 day of Jan, 1962 at 2:30 o'clock P.M. and duly recorded the 2 day of Feb, 1962 at 10:00 o'clock P.M. in the Map Records of said County in Volume 24, Page 68.

WITNESS MY HAND AND SEAL of said County in Corpus Christi, Texas, the day and year last written



BY: *[Signature]*
Deputy

No. 592760
FILED FOR RECORD
AT 2:30 O'CLOCK P. M.
JAN. 31, 1962
MRS. HENRY E. GOUGER
CLERK, COUNTY COURT,
NUECES COUNTY, TEXAS

MRS. HENRY E. GOUGER
County Clerk, Nueces

BY: *[Signature]* DEPUTY