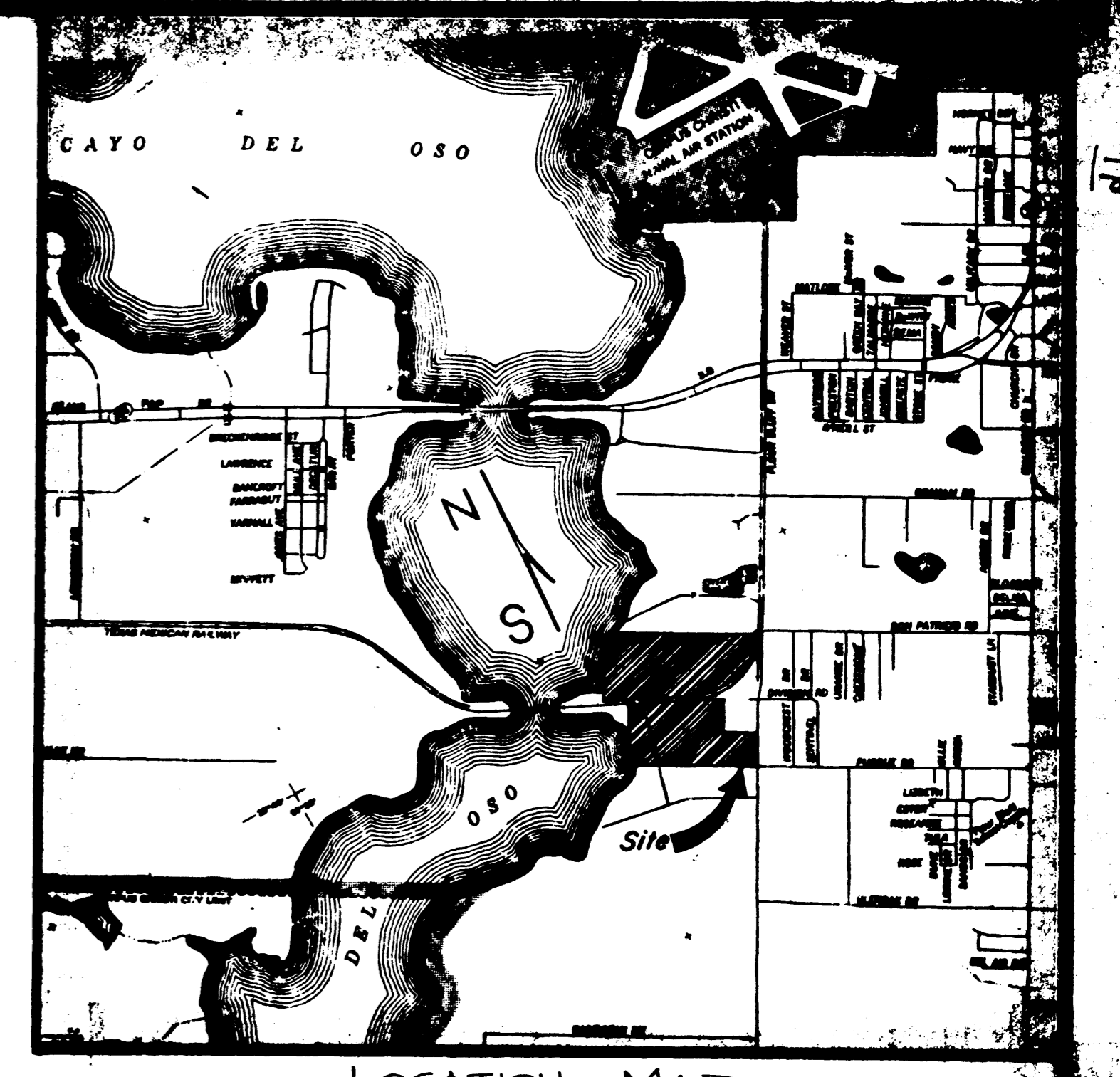
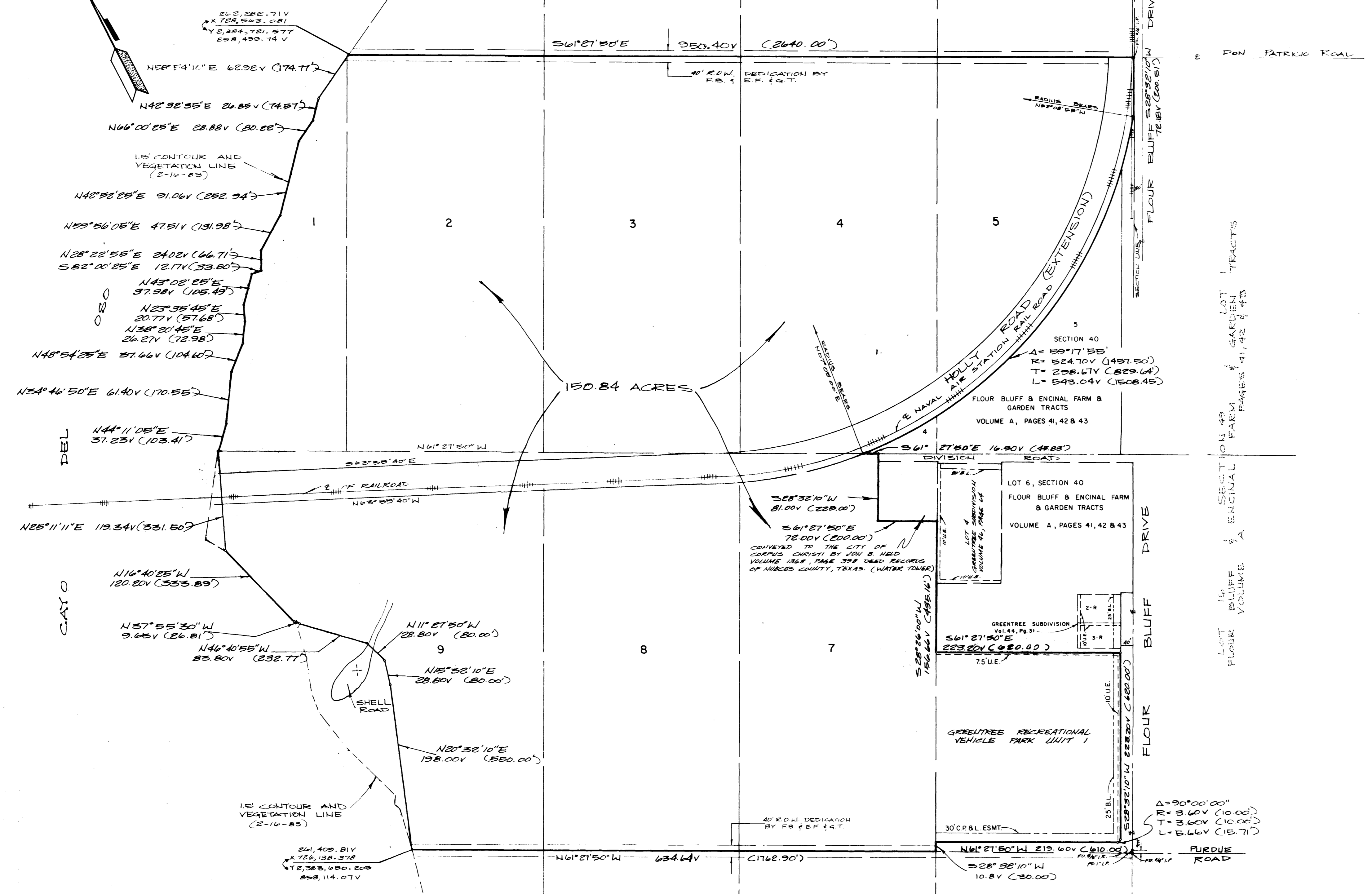


GRID NORTH TEXAS COORDINATE SYSTEM (SOUTH ZONE)

00°27'50" AT 54' I.P. FOUND AT THE SOUTH CORNER OF SECTION 41, F.B. & EN. F. & G.T.



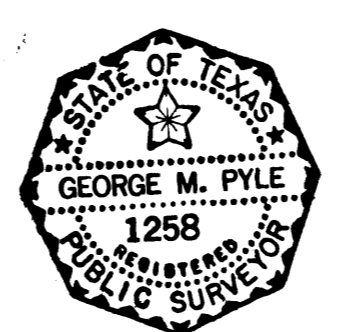
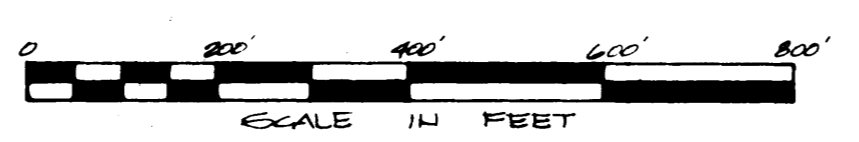
LOCATION MAP



NOTE: BEARINGS SHOWN ON THIS SURVEY ARE BASED ON THE TEXAS COORDINATE SYSTEM. (SOUTH ZONE)

I, GEORGE M. PYLE, LICENSED STATE LAND SURVEYOR, DO HEREBY CERTIFY THAT THE FOREGOING SURVEY WAS MADE BY ME ON GROUND AND THAT THE LIMITS, BOUNDARIES AND CORNERS, NATURAL AND ARTIFICIAL ARE AS DESCRIBED HERE ON.

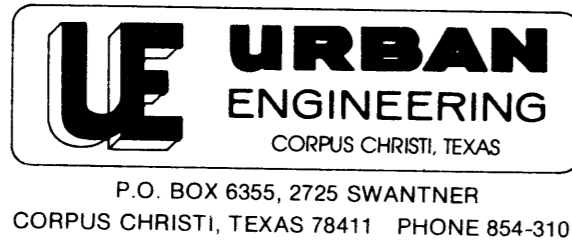
*George M. Pyle*  
 GEORGE M. PYLE R.P.S. L.S. L.S.



REV. BY	DATE	DESCRIPTION	APPROVED
 <b>URBAN ENGINEERING</b> CORPUS CHRISTI, TEXAS			
SURVEY OF All of Lots 1 thru 3 and a portion of Lots 4 and 5 and all of Lots 7 thru 9, Section 40, Flour Bluff and Encinal Farm and Garden Tracts, a map of which is recorded in Volume 4, Pages 41, 42 and 43, map records of Nueces County, Texas, save and except 0.918 acres out of the east corner of said Lot 7, conveyed to the City of Corpus Christi by Jon B. Held and recorded in Volume 1368, Page 398, deed records of Nueces County, Texas and all of Green Tree Recreational Vehicle Park Unit 1, a map of which is recorded in Volume 40, Page 160, map records of Nueces County, Texas.			
DRAWN BY: <i>AKJ</i> SCALE: 1"=200' JOB NO: 20356 CHECKED BY: DATE: 4/12/02 SHEET: 1 OF 1			

1-18-1102  
 1-18-1103  
 1-18-1104  
 1-18-1105  
 1-18-1106  
 1-18-1107  
 1-18-1108  
 1-18-1109  
 1-18-1110  
 1-18-1111  
 1-18-1112  
 1-18-1113  
 1-18-1114  
 1-18-1115  
 1-18-1116  
 1-18-1117  
 1-18-1118  
 1-18-1119  
 1-18-1120  
 1-18-1121  
 1-18-1122  
 1-18-1123  
 1-18-1124  
 1-18-1125  
 1-18-1126  
 1-18-1127  
 1-18-1128  
 1-18-1129  
 1-18-1130  
 1-18-1131  
 1-18-1132  
 1-18-1133  
 1-18-1134  
 1-18-1135  
 1-18-1136  
 1-18-1137  
 1-18-1138  
 1-18-1139  
 1-18-1140  
 1-18-1141  
 1-18-1142  
 1-18-1143  
 1-18-1144  
 1-18-1145  
 1-18-1146  
 1-18-1147  
 1-18-1148  
 1-18-1149  
 1-18-1150  
 1-18-1151  
 1-18-1152  
 1-18-1153  
 1-18-1154  
 1-18-1155  
 1-18-1156  
 1-18-1157  
 1-18-1158  
 1-18-1159  
 1-18-1160  
 1-18-1161  
 1-18-1162  
 1-18-1163  
 1-18-1164  
 1-18-1165  
 1-18-1166  
 1-18-1167  
 1-18-1168  
 1-18-1169  
 1-18-1170  
 1-18-1171  
 1-18-1172  
 1-18-1173  
 1-18-1174  
 1-18-1175  
 1-18-1176  
 1-18-1177  
 1-18-1178  
 1-18-1179  
 1-18-1180  
 1-18-1181  
 1-18-1182  
 1-18-1183  
 1-18-1184  
 1-18-1185  
 1-18-1186  
 1-18-1187  
 1-18-1188  
 1-18-1189  
 1-18-1190  
 1-18-1191  
 1-18-1192  
 1-18-1193  
 1-18-1194  
 1-18-1195  
 1-18-1196  
 1-18-1197  
 1-18-1198  
 1-18-1199  
 1-18-1200

1-18-1102  
 1-18-1103  
 1-18-1104  
 1-18-1105  
 1-18-1106  
 1-18-1107  
 1-18-1108  
 1-18-1109  
 1-18-1110  
 1-18-1111  
 1-18-1112  
 1-18-1113  
 1-18-1114  
 1-18-1115  
 1-18-1116  
 1-18-1117  
 1-18-1118  
 1-18-1119  
 1-18-1120  
 1-18-1121  
 1-18-1122  
 1-18-1123  
 1-18-1124  
 1-18-1125  
 1-18-1126  
 1-18-1127  
 1-18-1128  
 1-18-1129  
 1-18-1130  
 1-18-1131  
 1-18-1132  
 1-18-1133  
 1-18-1134  
 1-18-1135  
 1-18-1136  
 1-18-1137  
 1-18-1138  
 1-18-1139  
 1-18-1140  
 1-18-1141  
 1-18-1142  
 1-18-1143  
 1-18-1144  
 1-18-1145  
 1-18-1146  
 1-18-1147  
 1-18-1148  
 1-18-1149  
 1-18-1150  
 1-18-1151  
 1-18-1152  
 1-18-1153  
 1-18-1154  
 1-18-1155  
 1-18-1156  
 1-18-1157  
 1-18-1158  
 1-18-1159  
 1-18-1160  
 1-18-1161  
 1-18-1162  
 1-18-1163  
 1-18-1164  
 1-18-1165  
 1-18-1166  
 1-18-1167  
 1-18-1168  
 1-18-1169  
 1-18-1170  
 1-18-1171  
 1-18-1172  
 1-18-1173  
 1-18-1174  
 1-18-1175  
 1-18-1176  
 1-18-1177  
 1-18-1178  
 1-18-1179  
 1-18-1180  
 1-18-1181  
 1-18-1182  
 1-18-1183  
 1-18-1184  
 1-18-1185  
 1-18-1186  
 1-18-1187  
 1-18-1188  
 1-18-1189  
 1-18-1190  
 1-18-1191  
 1-18-1192  
 1-18-1193  
 1-18-1194  
 1-18-1195  
 1-18-1196  
 1-18-1197  
 1-18-1198  
 1-18-1199  
 1-18-1200



Job NO. 20321  
Job NO. 20356

P.O. BOX 6355, 2725 SWANTNER  
CORPUS CHRISTI, TEXAS 78411 PHONE 854-3101

July 11, 1983

RECEIVED

JUL 19 1983

General Land Office

Gary Mauro, Commissioner  
General Land Office  
1700 North Congress Room 812  
Austin, Texas 78701

Attention: Herman Forbes

Report on shoreline survey of a 150.84 acre tract of land out of Section 40, Flour Bluff and Encinal Farm and Garden Tracts, Nueces County Texas.

This report and the accompanying survey plat are being submitted to obtain General Land Office approval of the boundary between the littoral owner and State owned submerged land in Tracts A and D of the Cayo Del Oso.

Exhibits:

1. Map of "Flour Bluff and Encinal Farm and Garden Tracts", as recorded in Volume A, Pages 41-44 of the Map Records of Nueces County, Texas.
2. Tobin Aerial Photo No. 1232-11 dated 1934
3. Sheet No. 1 of "Map Of A Part Of Laguna Madre In Nueces And Kleberg Counties Showing Subdivision For Mineral Development" by Bascom Giles, General Land Office dated November 1, 1948.
4. "Oso Creek NE, Texas" Quadrangle, 1951
5. "Oso Creek NE, Texas", Quadrangle, 1968
6. Glasson/Lammon Aerial Photo No. 5180-2B, dated June 12, 1980
7. Copy of map showing Exxon Wells in Cayo Del Oso.
8. Copy of surface location of Oso State A-13

The North boundary of this tract adjoins the South boundary of a tract, the shoreline of which was previously approved by the General Land Office on September 29, 1982 and filed as Nueces County Rolled Sketch No. 80 to 80F.

The shoreline of the tract herewith submitted was set on the aquatic vegetation line at elevation 1.5 feet N.G.V.D. except for 3 areas in which artificial fill has been made. At the Northerly end of this shoreline a small portion was filled in to create the surface well drilling site as previously mentioned on the report filed in Nueces County Rolled Sketch 80 to 80F.

D-96  
Job No. 20321  
Job No. 20351  
Herman Forbes  
Page 2

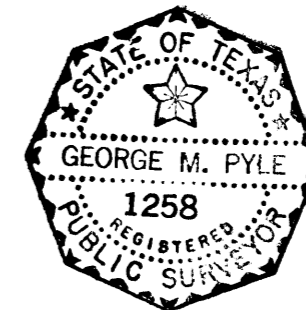
Along the center of this shoreline some fill was made to build a railroad across the Oso, and one other portion south of the railroad was filled for an Exxon well drilling site. The railroad was built to the Naval Air Station in the latter part of the 1930's or early 40's. The drilling site was built in the mid 1950's. There has been considerable accretion, partly natural and partly artificial around the area of the drill site. To determine the shoreline through this area I drew the 1934 shoreline on the survey as accurately as possible to intersect the natural shoreline (1.5 feet N.G.V.D.). The boundary across the railroad fill was run at about the same bearing as the 1934 photo from a point on the natural shoreline North of the railroad. The boundary at the North end was run from a point at the most northerly end of the natural shoreline to the southwest corner of the survey previously approved by the G.L.O. All the remainder of the shoreline is natural and set at elevation 1.5 feet, N.G.V.D.

Sincerely,

URBAN ENGINEERING

George M. Pyle, R.P.S.

GMP/pev  
Enclosure

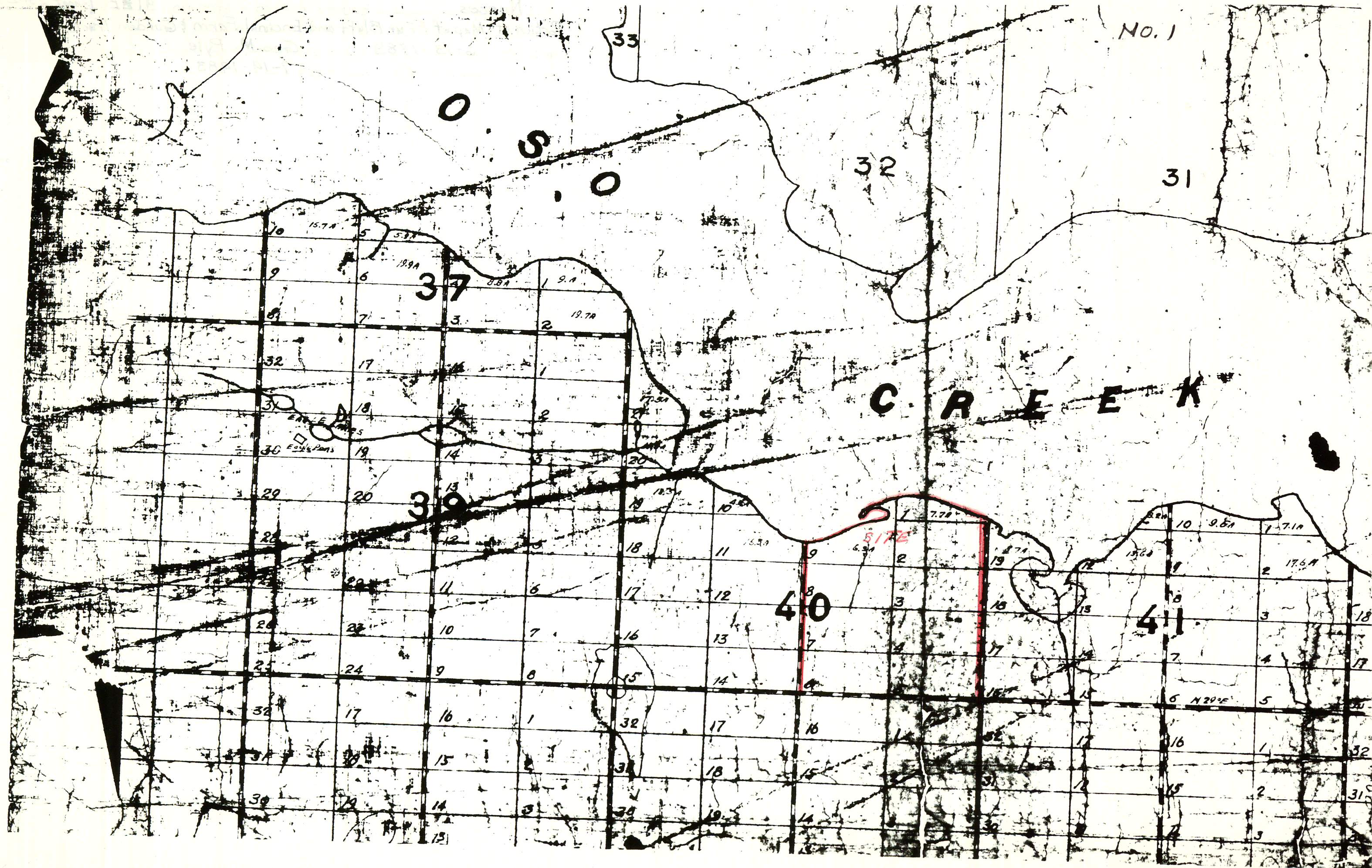


RECEIVED

JUL 19 1983

General Land Office



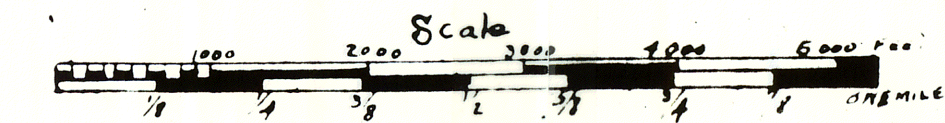


No. 1

# MAP OF FLOUR BLUFF AND ENCINAL FARM AND GARDEN TRACTS NUECES COUNTY, TEXAS

SURVEYED AND DRAWN FOR  
THE TEXAS LAND AND CATTLE COMPANY, LIMITED

By J.S. Peter, C.E.  
CORPUS CHRISTI, TEX.  
July 1894



**NOTE**  
All roads are 40 feet wide, center line on each side of section and 1/2 way section lines at corners.  
Full lots contain 20 acres inclusive of road.  
Full inside lots contain 19 1/2 acres inclusive of road.  
Full corner " " 19 1/4 " " "

**REFERENCE**  
Section Line Roads are indicated thus   
Half section " "   
Lot Lines " "   
Buildings " "   
Cultivated Lands " "

Filed this the 20<sup>th</sup> day of  
January A D 1895

H.E. Luter Clerk  
County Court Nueces County  
Texas





400  
NO. 2

13

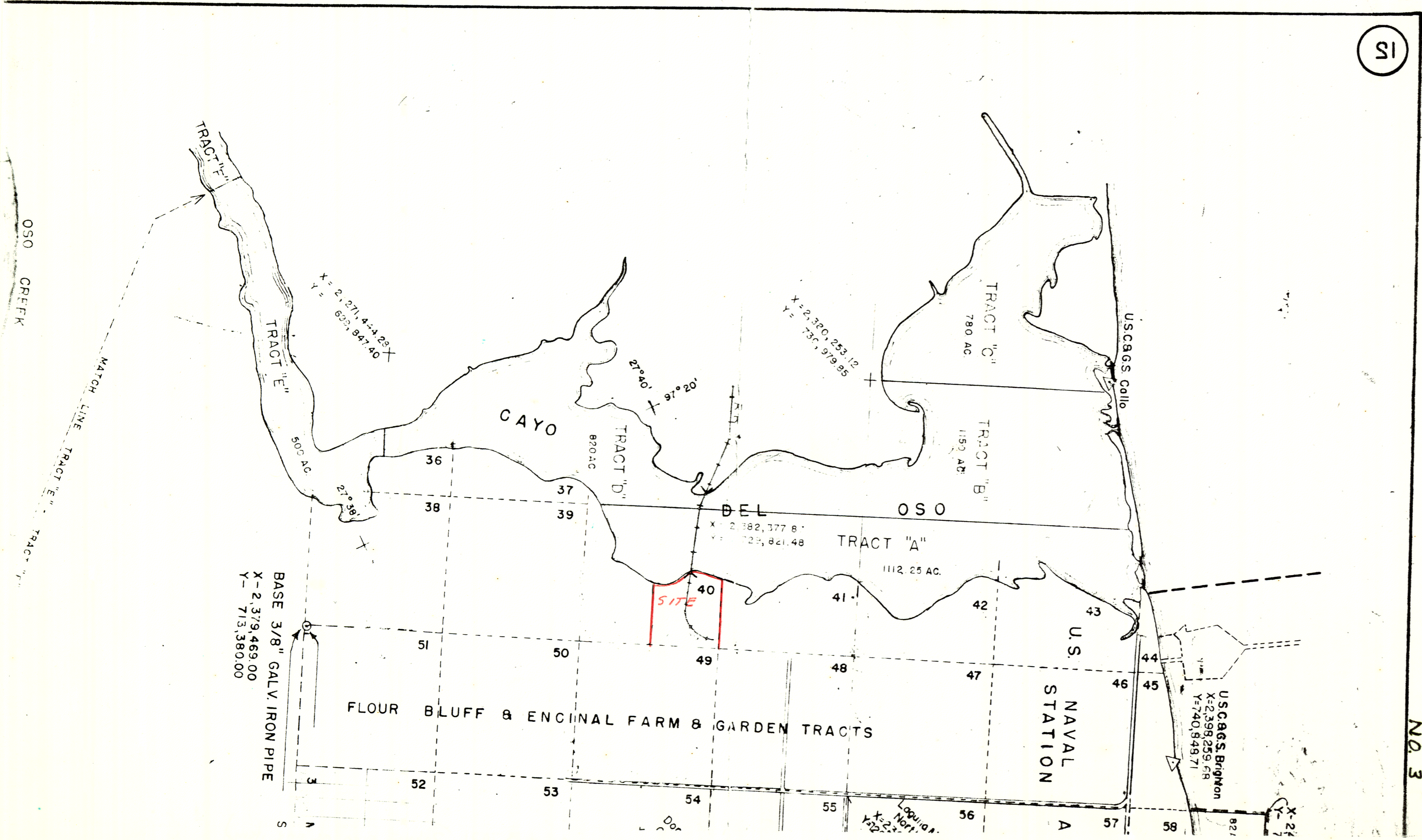
1"=1600'





SHEET NO. I.  
 MAP OF A PART OF  
**LAGUNA MADRE**

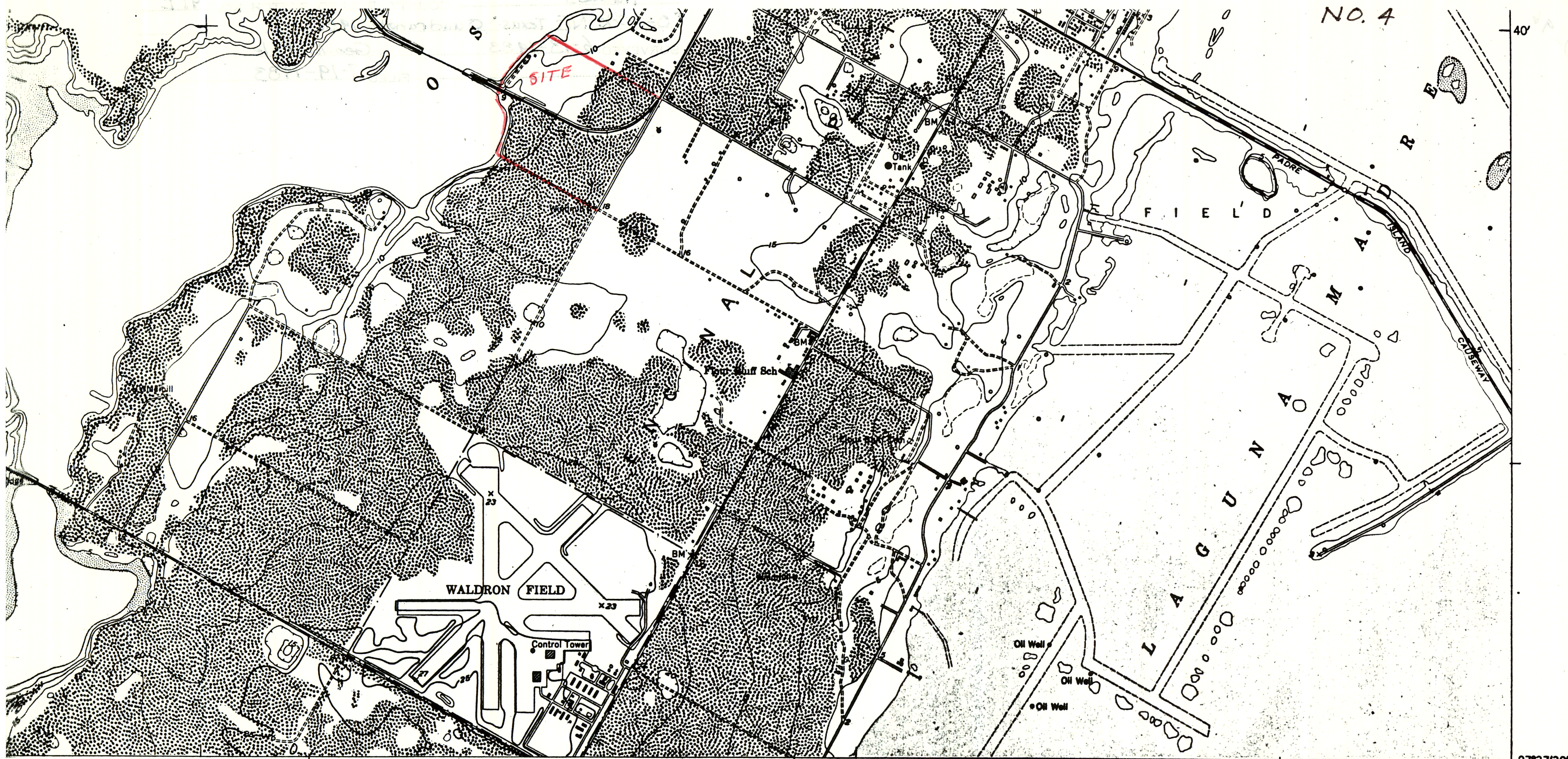
IN  
 NUECES AND KLEBERG COUNTIES  
 SHOWING  
 SUBDIVISION FOR MINERAL DEVELOPMENT  
 BY  
 BASCOM GILES COMMISSIONER GENERAL LAND OFFICE  
 AUSTIN TEXAS - NOV. 1, 1948 - SCALE 1"=1200 VARAS  
 COMPILED BY GURTIS R. HALE  
 TRACED BY J. M. L.



SI

NO. 3

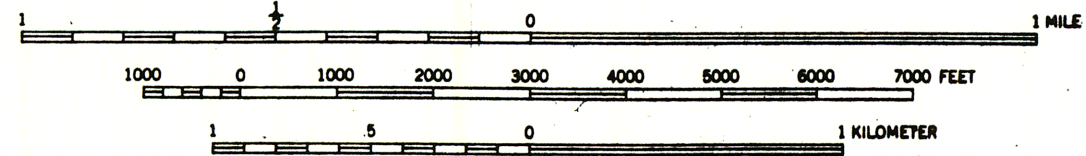




NO. 4

20' 1730' 27°37'30" 97°15'

SCALE 1:24000



CONTOUR INTERVAL 5 FEET  
 DATUM IS MEAN SEA LEVEL  
 DEPTH CURVES AND SOUNDINGS IN FEET—DATUM IS MEAN LOW WATER  
 SHORELINE SHOWN REPRESENTS THE APPROXIMATE LINE OF MEAN HIGH WATER  
 THE AVERAGE RANGE OF TIDE IS APPROXIMATELY 1 FOOT

ROAD CLASSIFICATION  
 Heavy-duty 4 LANE 16 LANE Light-duty 4 LANE 16 LANE  
 Medium-duty 4 LANE 16 LANE Unimproved dirt 4 LANE 16 LANE  
 U. S. Route State Route

OSO CREEK NE, TEX.  
 NE/4 OSO CREEK 15' QUADRANGLE  
 N2737.5-W9715/7.5

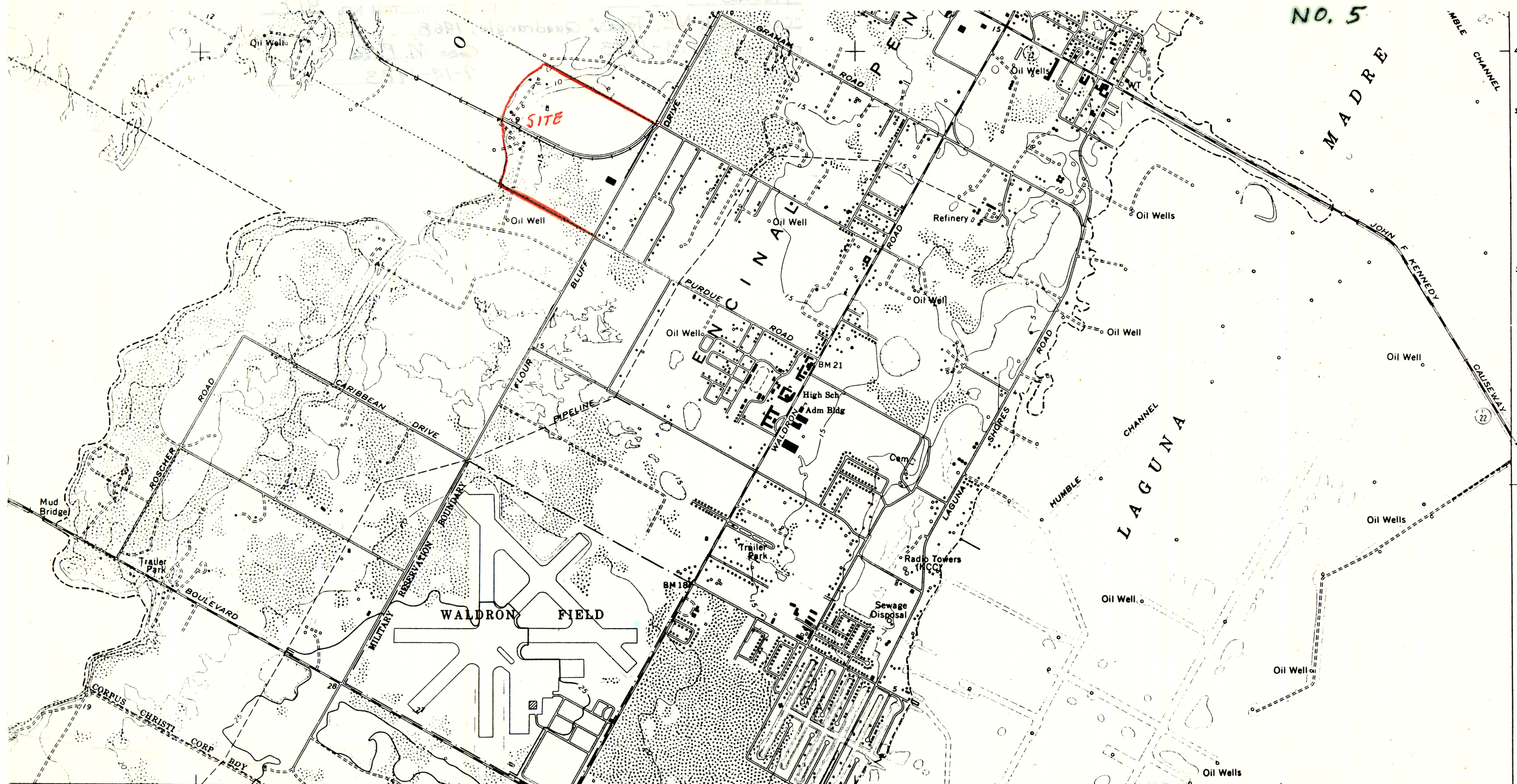
TRUE NORTH  
 MAGNETIC NORTH  
 9 1/2°  
 APPROXIMATE MEAN DECLINATION, 1951

THIS MAP COMPLIES WITH NATIONAL MAP ACCURACY STANDARDS  
 FOR SALE BY U. S. GEOLOGICAL SURVEY, FEDERAL CENTER, DENVER, COLORADO OR WASHINGTON 25, D. C.  
 A FOLDER DESCRIBING TOPOGRAPHIC MAPS AND SYMBOLS IS AVAILABLE ON REQUEST

1951

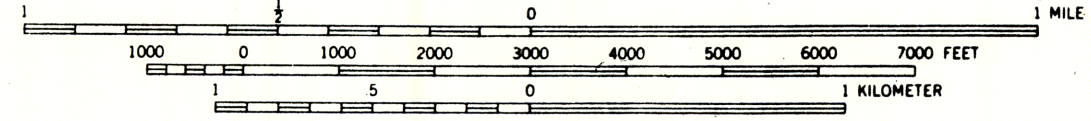


NO. 5

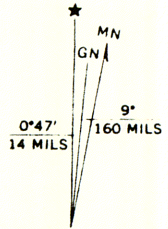


664 20' 665 666 (PITA ISLAND) 6539 III SE 667 17'30" 668 669 670 27°37'30" 97°15'

SCALE 1:24 000



CONTOUR INTERVAL 5 FEET  
 DAUM IS MEAN SEA LEVEL  
 DEPTH CURVES AND SOUNDINGS IN FEET—DATUM IS MEAN LOW WATER  
 SHORELINE SHOWN REPRESENTS THE APPROXIMATE LINE OF MEAN HIGH WATER  
 THE MEAN RANGE OF TIDE IS NEGLIGIBLE



QUADRANGLE LOCATION

ROAD CLASSIFICATION

Primary highway, all weather, hard surface	Light-duty road, all weather, improved surface
Secondary highway, all weather, hard surface	Unimproved road, fair or dry weather

State Route

OSO CREEK NE, TEX.  
 NE/4 OSO CREEK 15' QUADRANGLE  
 N2737.5—W9715/7.5

1968

AMS 6539 III NE—SERIES V882

GRID AND 1968 MAGNETIC NORTH  
 DIVERGENCE AT CENTER OF SHEET

THIS MAP COMPLIES WITH NATIONAL MAP ACCURACY STANDARDS  
 FOR SALE BY U. S. GEOLOGICAL SURVEY, DENVER, COLORADO 80225, OR WASHINGTON, D. C. 20242  
 A FOLDER DESCRIBING TOPOGRAPHIC MAPS AND SYMBOLS IS AVAILABLE ON REQUEST

27°37'30"

97°15'

3057000m N.

3058

2.8 MI. TO PARK ROAD 53

3060

3061

40'

30

(CRANE ISLANDS SW)  
 6539 III SW



NO. 6

1934 Shoreline





PL 10  
Copy of location of Oso State A-13  
George M. Pyle  
1953-11-18  
1953-11-18

Location: OSO-STATE A-13 (Dev.) (Corr.) Completion Based on Roberts  
Drilling Company Survey

Description: A regular 6800' non-budgeted Flour Bluff Field well, in State Tract "A", Cayo del Oso, Nueces County, Texas, Lease #121023 (State #30037), located 1647' southwest of the northeast line(extended) of Block 40, Flour Bluff & Encinal Subdivision and 429' northwest of the southeast line of the lease (shore line); also being 1070'± southwest of Oso-State A-10(Bottom of hole). This well was drilled from a surface location which is located 2050' southwest of the northeast line of Block 40 and 697' northwest of the southeast line of Lot, 9, Block 40, Flour Bluff & Encinal Subdivision, and 100'± southwest of the northeast line of the lease (shore line) and is completed N 34°30' W a horizontal distance of 904' from the surface location calculated to the center of perforations at a total vertical depth of 6631'.

630

Calculated [Signature] (By Whom) Date 10-16-53

Authorized Ralph W. Barnett, Jr. (By Whom) Date 10-16-53

Surveyed \_\_\_\_\_ (By Whom) \_\_\_\_\_ (Date) \_\_\_\_\_ (Book Reference)



September 1, 1983

Urban Engineering  
P. O. Box 6355  
Corpus Christi, Texas 78411

Attention: George Pyle

Re: Shoreline survey of Cayo Del Oso along  
Section 40, Flour Bluff and Encinal  
Farm and Garden Tracts, Nueces County.  
Your job No. 20356

Gentlemen:

The shoreline survey, as submitted by letter report dated July 11, 1983 with exhibits and plat has been examined and is approved for filing as the correct location for the line between public submerged land and the uplands privately owned.

The items have been filed as Nueces County Rolled Sketch No. 90.

Sincerely yours,

Herman Forbes  
Director, Surveying Division

HF/dc