

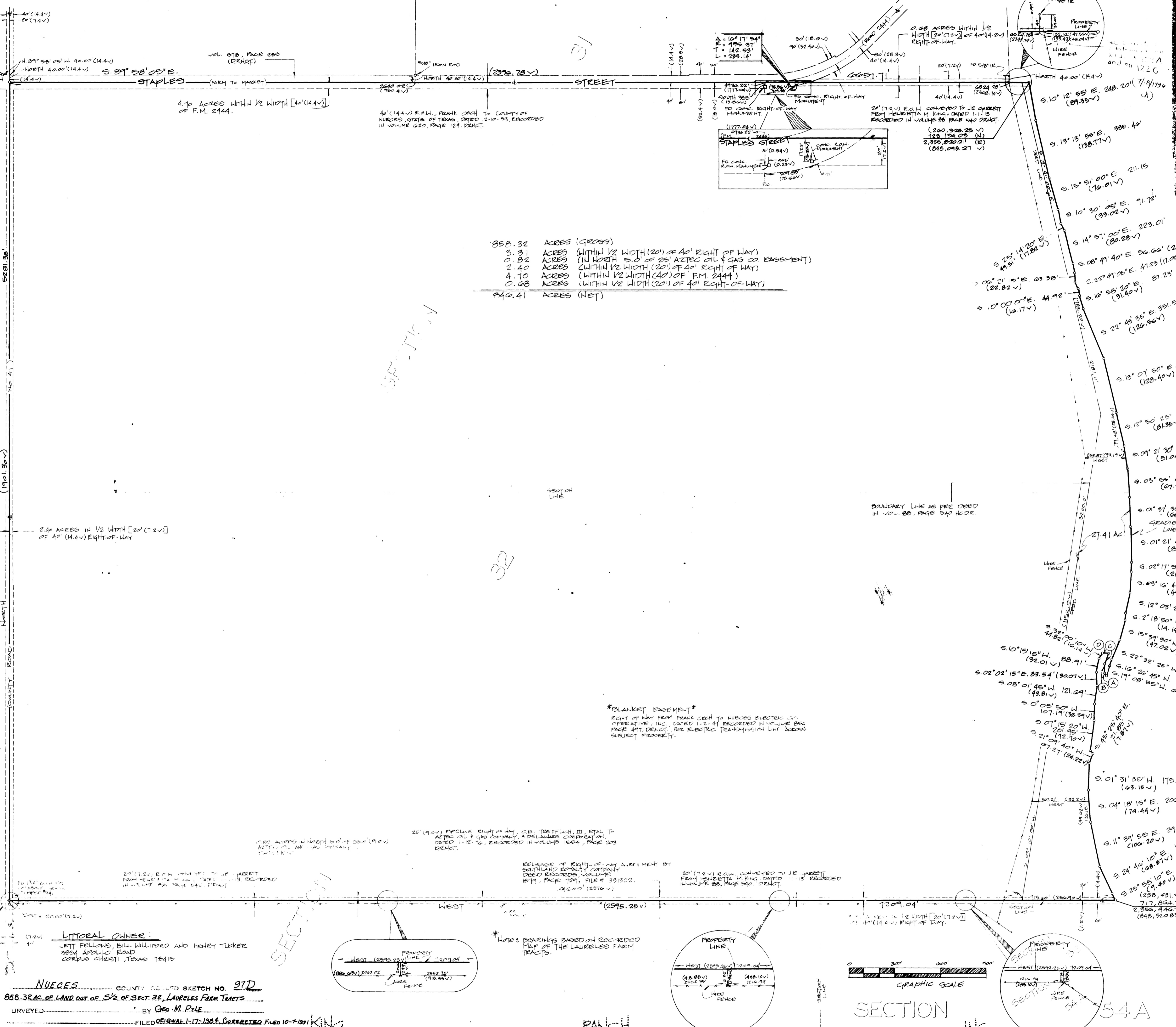
CEMETERY TOWN DEPT.

SECTION 30

SECTION 32

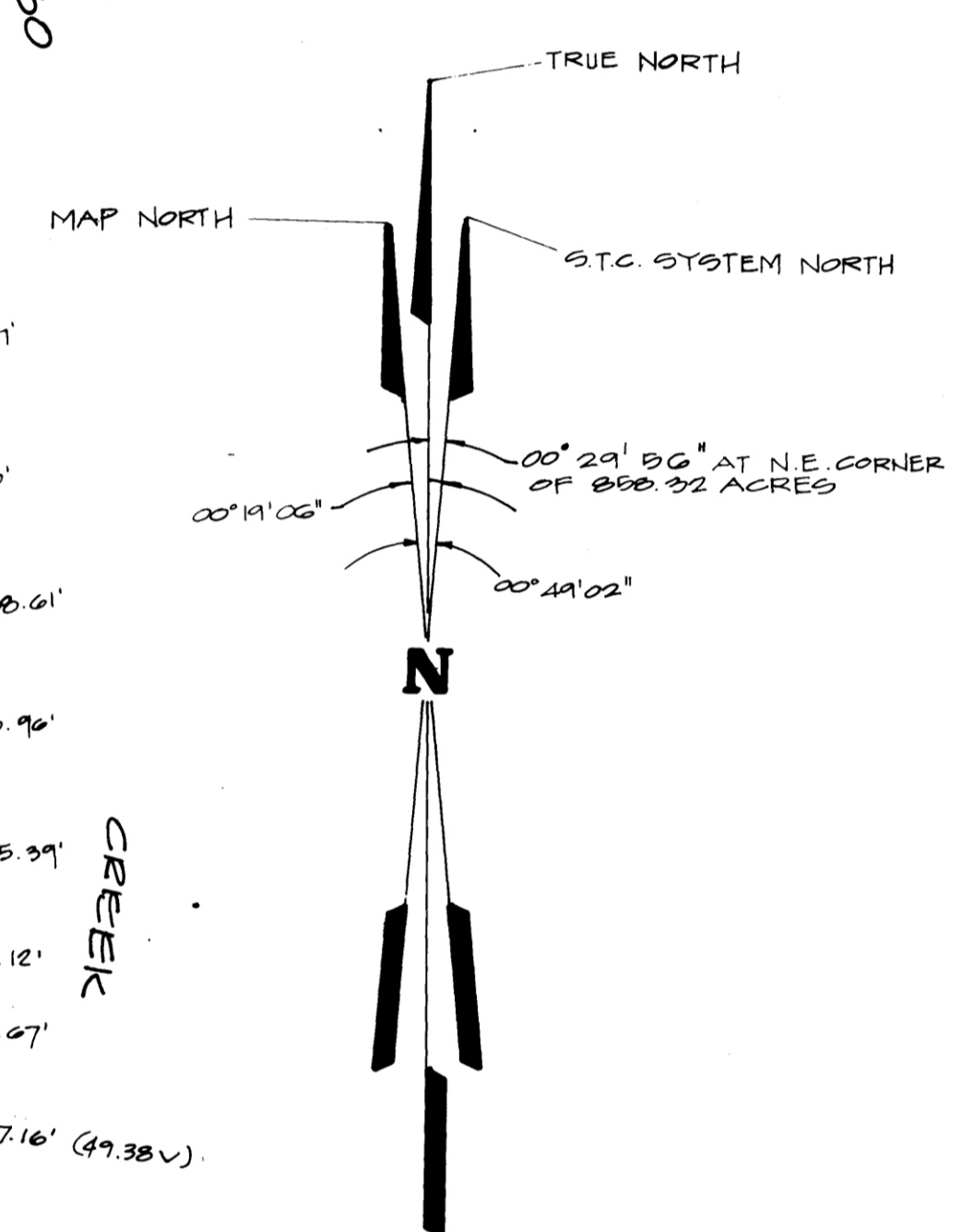
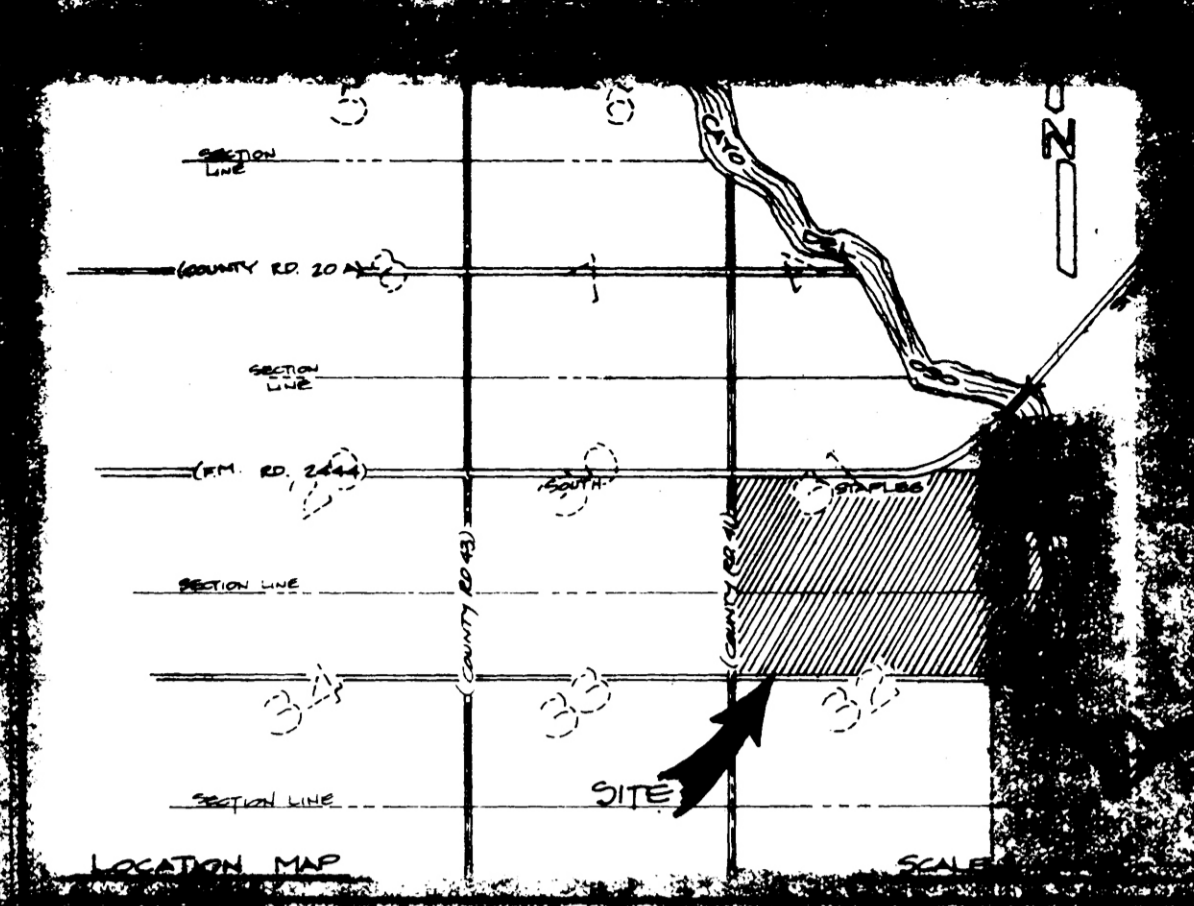
SECTION 33

SECTION 34



858.32 ACRES (GROSS)
 3.31 ACRES (WITHIN 1/2 WIDTH (20') OF 40' RIGHT OF WAY)
 0.82 ACRES (IN NORTH 1/2 OF 281 ACRES OIL & GAS CO EASEMENT)
 2.40 ACRES (WITHIN 1/2 WIDTH (20') OF 40' RIGHT OF WAY)
 4.10 ACRES (WITHIN 1/2 WIDTH (40') OF F.M. 2444)
 0.68 ACRES (WITHIN 1/2 WIDTH (20') OF 40' RIGHT-OF-WAY)
 848.41 ACRES (NET)

BLANKET EASEMENT
 RIGHT OF WAY FROM FRANK CECIL TO NUCLES ELECTRIC CO. OPERATIVE, INC. DATED 1-12-21 RECORDED IN VOLUME 894 PAGE 491, DEPT. FOR ELECTRIC TRANSMISSION LINE ACROSS SUBJECT PROPERTY.



COORDINATES ARE BASED ON THE TEXAS COORDINATE SYSTEM, SOUTH ZONE, NAD 1921 MAP BEARINGS BASED ON RECORDED MAP OF LAURELES FARM TRACTS.

- (A) N 40° 25' 10" W. 21.10' (17.00V)
- (B) N 02° 10' 35" E. 58.55' (21.00V)
- (C) N 19° 08' 30" E. 75.11' (27.04V)
- (D) N 28° 30' 35" W. 38.14' (19.73V)

I, GEORGE M. PYLE, LICENSED STATE LAND SURVEYOR, DO HEREBY CERTIFY THAT THE FOREGOING SURVEY WAS MADE BY ME ON THE GROUND AND THAT THE LIMITS, BOUNDARIES AND CORNERS, NATURAL AND ARTIFICIAL ARE AS DEPICTED HEREON.

BY: George M. Pyle 9-25-91
 GEORGE M. PYLE R.F.S. L.S.

REV.	DATE	DESCRIPTION	APPROVED
D.G.	12/81	CORRECTED COORDINATES NORTH	<u>GMP</u>

URBAN ENGINEERING
 CORPUS CHRISTI, TEXAS

SURVEY OF
 858.32 ACRES OF LAND OUT OF THE SOUTH HALF OF SECTION 31, AND THE NORTH HALF OF SECTION 32, LAURELES FARM TRACTS, A MAP OF WHICH IS RECORDED IN VOLUME 3, PAGE 15, MAP RECORDS OF NUECES COUNTY, TEXAS.

DRAWN BY: AM SCALE: 1" = 200' JOB NO: 20354-06

CHKD BY: DATE: 11-17-83 SHEET: 1 OF 1

SEE SK FILE 78 FOR INFORMATION ROLLED SKETCH NO. 97D

LITTORAL OWNER:
 JETT FELLOWS, BILL WILLIARD AND HENRY TUCKER
 2804 APOLLO ROAD
 CORPUS CHRISTI, TEXAS 78418

NUECES COUNTY SHELDED SKETCH NO. 97D
 858.32 ACRES OF LAND OUT OF S 1/2 OF SECT. 32, LAURELES FARM TRACTS
 SURVEYED BY: Geo. M. Pyle
 FILED ORIGINAL 1-17-1984, CORRECTED FILED 10-7-1991 KING

RANCH INC.

SECTION 34

315.20 ACRES
See NUECES Co. ROLLED SKETCH
No. 70

267.49 ACRES
See NUECES Co. ROLLED SKETCH No 94

GLASSON - LANMON
Aerial Photography
Rt. 2 - Box 9028
CORPUS CHRISTI, TEXAS
78410
Date: OCT 14 1982
Scale: 1/400

9882-13

843.96 ACRES
See NUECES Co ROLLED SKETCH No 93

828 SITE

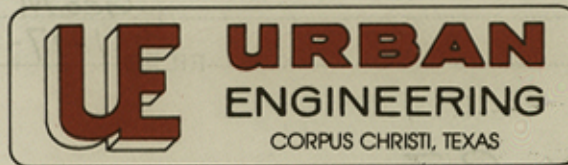


RECEIVED D-10

JAN 17 1984

GENERAL LAND OFFICE

Job No. 20354.06



P.O. BOX 6355, 2725 SWANTNER
CORPUS CHRISTI, TEXAS 78411 PHONE 854-3101

January 3, 1984

Garry Mauro, Commissioner
General Land Office
1700 North Congress, Room 812
Austin, Texas 78701

Attention: Herman Forbes, Director
Surveying Division

Dear Herman:

I am herewith transmitting a survey of 858.32 acres of land out of the South 1/2 of Section 31 and the North 1/2 of Section 32, Laureles Farm Tracts, Nueces County, Texas. The owners are requesting General Land Office approval of the gradient boundary for platting purposes. This tract adjoins Cayo Del Oso State Tract F and is directly across Cayo Del Oso from an 843.96 acre tract on which you approved the gradient boundary by letter dated October 21, 1983 and filed as Nueces County Rolled Sketch No. 93.

The gradient boundary was run in the same manner as for the 843.96 acre tract. The exhibits in Rolled Sketch No. 93 also apply to this 858.32 acre tract.

I am also enclosing a Glasson Lammon Aerial Photo 9882.13 (Exhibit No. 7 in Rolled Sketch No. 93) and a copy of the addendum to the survey report for said 843.96 acre tract of land.

Sincerely

URBAN ENGINEERING

George M. Pyle

R.P.S. L.S.L.S.

GMP/crm
Enclosure



counter 41634

NUECES COUNTY ROLLED SKETCH NO. 97A
858.32 ac. of land out of S 1/2 Sect. 31 & N 1/2 Sect. 32, Laureles Farm Tracts - Correspondence

SURVEYED BY Geo. M. Pyle
FILED 1-17-1984

File No. Rolled Sk. 97
Nueces County

Filed Jan. 17 1984

GARRY MAURO, Com'r

By H. Forbes

Attention: Herman Forbes, Director
Surveying Division
1700 North Congress, Room 212
Austin, Texas 78701

Dear Herman:

I am herewith transmitting a survey of 858.32 acres of land out of the south 1/2 of Section 31 and the north 1/2 of Section 32, Laureles Farm Tracts, Nueces County, Texas. The owners are requesting General Land Office approval of the median boundary for existing purposes. This tract adjoins Case No. 100 State Tract 1 and is directly across from an 843.96 acre tract on which you approved the gradient boundary by letter dated October 21, 1982 and filed as Nueces County Rolled Sketch No. 97.

The median boundary was run in the same manner as for the 843.96 acre tract. The exhibits in Rolled Sketch No. 97 also apply to this 858.32 acre tract.

I am also enclosing a Glasson Cannon aerial photo 1982.13 (Exhibit No. 7) in Rolled Sketch No. 97) and a copy of the addendum to the survey report for said 843.96 acre tract of land.

Very truly yours,
GARRY MAURO, Com'r
General Land Office
1700 North Congress, Room 212
Austin, Texas 78701



counter 91635

Garry Mauro
Commissioner
General Land Office



January 31, 1984

Urban Engineering
P. O. Box 6355
Corpus Christi, Texas 78411

Attention: George Pyle

Re: Your job No. 20354.06 - Gradient boundary
survey along the S/2, Section 31 and
the N/2 Section 32, Laureless Farm Tracts,
Nueces County.

Gentlemen:

The gradient boundary survey along a portion of Cayo del Oso
fronting on the referenced area as shown on the plat and ex-
hibit submitted with your letter and report dated January 3,
1984, which was received January 17, 1984, is accepted as the
correct location for such gradient boundary.

The papers and plat are filed in this office as Rolled Sketch
97 in Nueces County.

Sincerely yours,

Herman Forbes
Herman Forbes
Associate Director, Surveying Division

HF/dc

Nueces COUNTY ROLLED SKETCH NO. 97B
Correspondence: GLO to Geo. M. Pyle
SURVEYED BY
FILED ~~2~~ 2-1-1984

January 11, 1984

Urban Engineering
P. O. Box 6322
Corpus Christi, Texas 78411

Attention: George Pyle

Re: Your job No. 20354.06 - Gradient boundary
survey along the S/2, Section 31 and
the N/2 Section 32, Laureles Farm Tracts,
Nueces County.

Gentlemen:

The gradient boundary survey along a portion of Cayo del Oso
location on the referenced area as shown on the plat and ex-
hibit submitted with your letter and report dated January 11,
1984, which was received January 17, 1984, is accepted as the
correct location for such gradient boundary.

The papers and plat are filed in this office as Rolled Sketch
97 in Nueces County.

Sincerely yours,

Herbert Forbes
Herbert Forbes
Associate Director, Surveying Division

HF/bc

Surveying Division
1500 North Congress Avenue
Austin, Texas 78701
(512) 478-2071

counter 41637