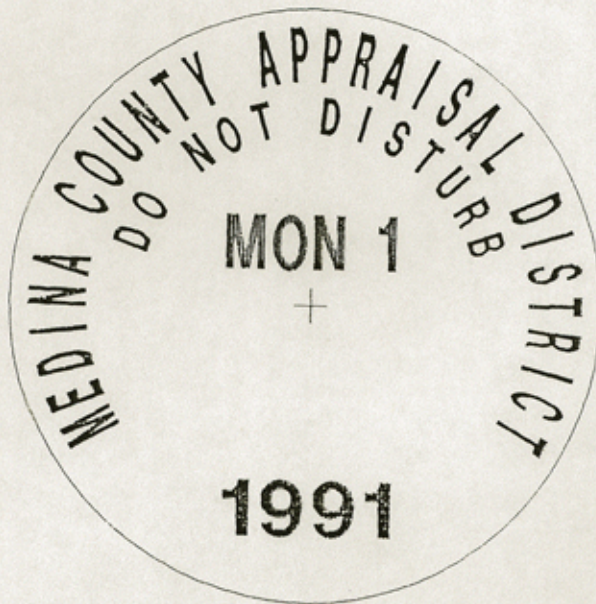


MEDINA COUNTY  
APPRAISAL DISTRICT  
SURVEY CONTROL MARKERS



File No. Sketch File 21

MEDINA Co. County

Date Filed: April 24, 2002

David Dewhurst, Commissioner

By Bonnie Howard

CONSTRAINED ADJUSTMENT RESULTS  
OF  
GPS BASELINE OBSERVATIONS

BY

GEORGE W. MUERY  
SERVICES, INC.  
SAN ANTONIO, TEXAS



ESRI  
GIS County Line Marker 36

X-Coord - 1836349.250

Y-Coord - 13585055.000

Elevation -

694.780

OR COMMON LANGUAGE

ESRI  
GIS County Line Marker 33

X-Coord - 1836477.875

Y-Coord - 13601078.000

Elevation -

772.450

ESRI  
GIS SW Corner

X-Coord - 1836314.125

Y-Coord - 13580975.000

Elevation -

691.530

OR COMMON LANGUAGE

File No. Sketch File 21

MEDINA County

Date Filed: April 24, 2002

David Dewhurst, Commissioner

By Douglas Howard



# MEDINA COUNTY APPRAISAL DISTRICT

## HORIZONTAL CONTROL MONUMENT

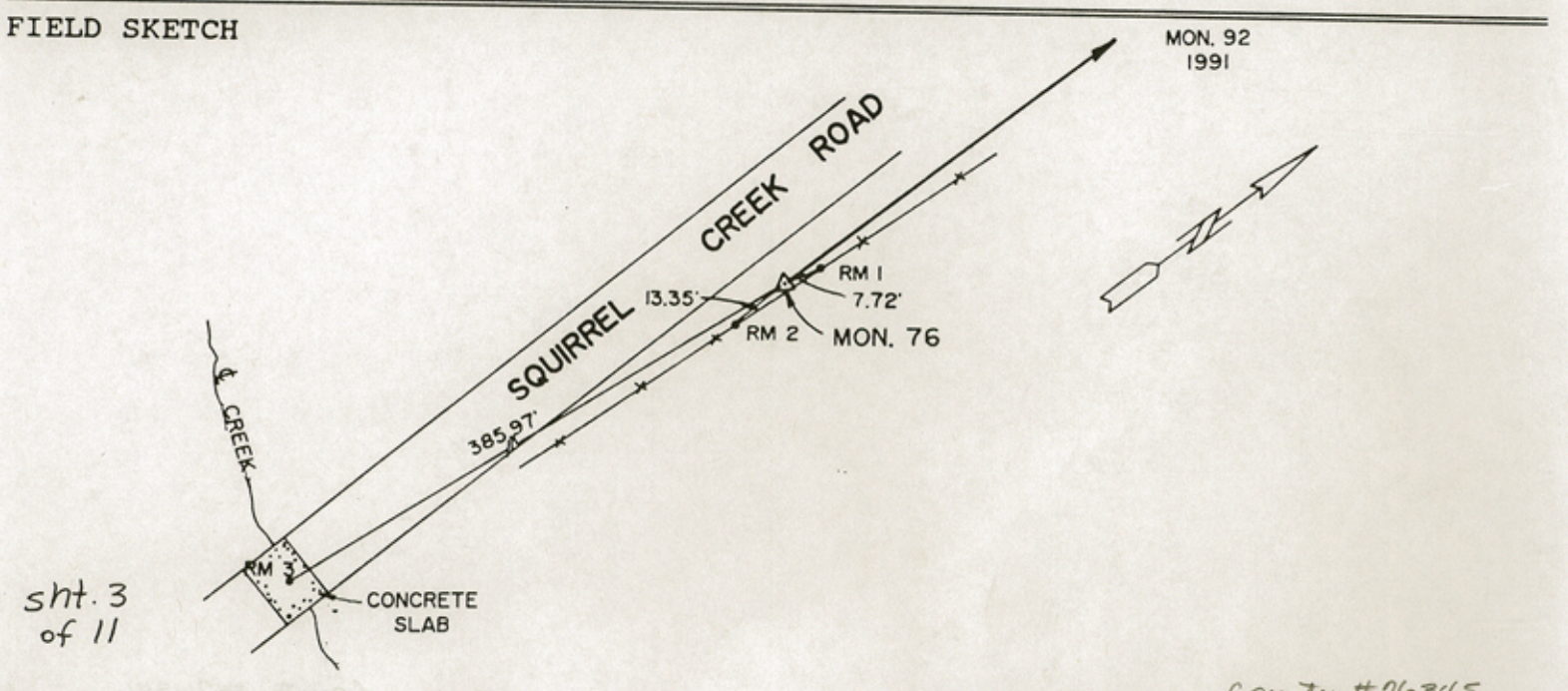
MONUMENT NAME MONUMENT 76 1991	DATE ESTABLISHED 1991	STATE: TEXAS	COUNTY MEDINA
-----------------------------------	--------------------------	-----------------	------------------

NAD - 83 GEODETIC POSITION LATITUDE        N 029° 11' 21.7804" LONGITUDE       W 099° 20' 31.8012"	NAD-83 TEXAS SOUTH CENTRAL ZONE STATE PLANE COORDINATES IN U.S. SURVEY FEET  NORTHING (Y)                13616557.42 EASTING (X)                    1859330.50  CONVERGENCE =    - 0° 10' 03.47" SCALE FACTOR =        0.999866
--	---

AZIMUTH MARK MONUMENT 92 1991	ASTRONOMIC AZIMUTH (FROM NORTH) N 359° 25' 25"	GRID AZIMUTH (FROM NORTH) N 359° 35' 28"
----------------------------------	---	---

REFERENCE MARK DESCRIPTION	DISTANCE (ft)	DIRECTION
MONUMENT 92 1991		
RM1: CONCRETE NAIL W/SHINER IN FENCE POST	1252.0	000°00'00"
RM2: CONCRETE NAIL W/SHINER IN FENCE POST	7.72	013°56'07"
RM3: CENTER OF ROAD AND CENTER OF CONCRETE SLAB	13.35	176°26'54"
	385.97	185°02'09"

DETAILED DESCRIPTION : MONUMENT IS AN ALUMINUM CAP SET IN CONCRETE STAMPED, "MEDINA COUNTY APPRAISAL DISTRICT, MON 76 1991" MONUMENT IS LOCATED ON THE EAST SIDE OF SQUIRREL CREEK RD., APPROXIMATELY 386 FEET NORTH OF CREEK, AND APPROXIMATELY 8.5 FEET EAST OF SQUIRREL CREEK RD. EDGE OF PAVEMENT. TO REACH THE MONUMENT FROM THE INTERSECTION OF SQUIRREL CREEK ROAD AND U.S. HIGHWAY 90, WEST OF D'HANIS, GO SOUTH ON SQUIRREL CREEK ROAD APPROXIMATELY 9.3 MILES TO THE MONUMENT ON THE LEFT.





MEDINA COUNTY APPRAISAL DISTRICT

HORIZONTAL CONTROL MONUMENT

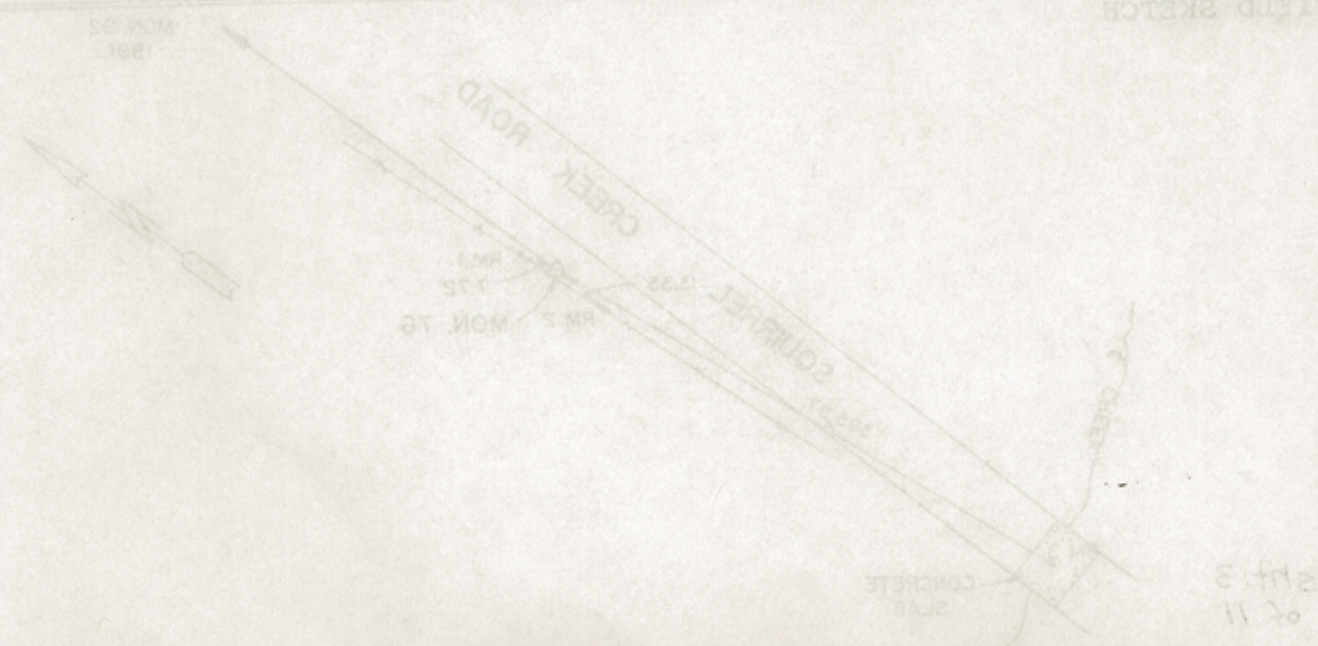
COUNTY MEDINA	STATE TEXAS	DATE ESTABLISHED 1991	MONUMENT NAME MONUMENT 76 1991
HAD-83 TEXAS SOUTH CENTRAL ZONE STATE PLANE COORDINATES IN U.S. SURVEY FEET		NAD - 83 GEODETIC POSITION LATITUDE N 02° 11' 21.7804" LONGITUDE W 099° 20' 31.8012"	
NORTHING (Y) 1361657.43 EASTING (X) 185330.50		AZIMUTH MARK MONUMENT 76 1991	
CONVERGENCE = - 0° 10' 03.47" SCALE FACTOR = 0.99986		ASTRONOMIC AZIMUTH (FROM NORTH) N 159° 25' 25"	
GRID AZIMUTH (FROM NORTH) N 159° 35' 28"		REFERENCE MARK DESCRIPTION MONUMENT 76 1991	

DIRECTION	DISTANCE (FT)	REFERENCE MARK DESCRIPTION
000° 00' 00"	1522.0	RM1: CONCRETE NAIL W/SHINER IN FENCE POST
013° 28' 07"	17.77	RM2: CONCRETE NAIL W/SHINER IN FENCE POST
176° 26' 24"	13.35	RM3: CENTER OF ROAD AND CENTER
185° 02' 09"	385.92	

File No. Sketch File 21  
MEDINA County

Date Filed: APRIL 24, 2002

By David Dewhurst, Commissioner  
Douglas Howard





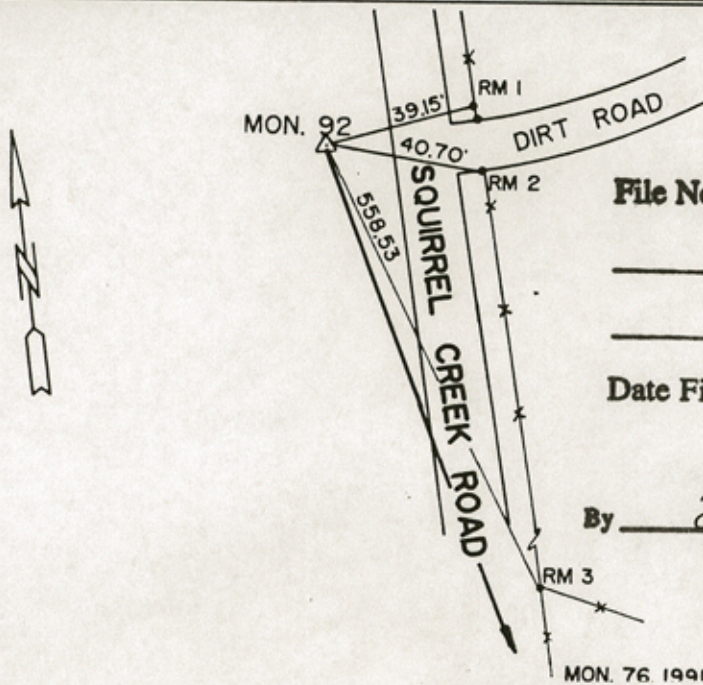
# MEDINA COUNTY APPRAISAL DISTRICT

## HORIZONTAL CONTROL MONUMENT

MONUMENT NAME <b>MONUMENT 92 1991</b>	DATE ESTABLISHED 1991	STATE: TEXAS	COUNTY MEDINA
NAD - 83 GEODETIC POSITION LATITUDE        N 029° 11' 34.1736" LONGITUDE      W 099° 20' 31.9433"		NAD-83 TEXAS SOUTH CENTRAL ZONE STATE PLANE COORDINATES IN U.S. SURVEY FEET  NORTHING (Y)            13617809.15 EASTING (X)             1859321.56  CONVERGENCE =        -00° 10' 03.54" SCALE FACTOR =        0.999866	
AZIMUTH MARK MONUMENT 76 1991	ASTRONOMIC AZIMUTH (FROM NORTH) N 179° 25' 25"	GRID AZIMUTH (FROM NORTH) N 179° 35' 28"	
REFERENCE MARK DESCRIPTION		DISTANCE (ft)	DIRECTION
MONUMENT 76 1991		1252.0	000°00'00"
RM 1 CONCRETE NAIL W/SHINER IN FENCE BRACE POST		39.15	264°21'26"
RM 2 CONCRETE NAIL W/SHINER IN FENCE GATE POST		40.70	287°19'18"
RM 3 CONCRETE NAIL W/SHINER IN FENCE CORNER POST		558.53	357°51'48"

**DETAILED DESCRIPTION :** MONUMENT IS AN ALUMINUM CAP SET IN CONCRETE STAMPED, "MEDINA COUNTY APPRAISAL DISTRICT, MON 92 1991"  
 MONUMENT IS LOCATED APPROXIMATELY 13 FEET WEST OF THE PAVEMENT EDGE OF SQUIRREL CREEK ROAD AND APPROXIMATELY 0.5 MILES NORTH OF MR. NESTER'S HOUSE, AND OPPOSITE A PASTURE GATE. TO REACH THE MONUMENT FROM THE INTERSECTION OF SQUIRREL CREEK ROAD AND U.S. HIGHWAY 90, WEST OF D'HANIS, TEXAS, GO SOUTH ON SQUIRREL CREEK ROAD APPROXIMATELY 9.1 MILES TO THE MONUMENT ON THE RIGHT.

**FIELD SKETCH**



File No. Sketch File 21  
MEDINA County

Date Filed: APRIL 24, 2002

By David Dewhurst, Commissioner  
Douglas Howard

sh. 4 of 11

MON. 76 1991

Counter # 76347





MEDINA - UVALDE #36

counter # 76348

Sht. 5 of 11




File No. Sketch FileZI  
MEDINA

County

Date Filed: APRIL 24, 2002

By David Dewhurst, Commissioner  
Douglas Howard





MEDINA - UVALDE #36

Sht. 6 of 11

Counter # 76350



File No. Sketch File 21  
MEDINA County

Date Filed: APRIL 24, 2002

By David Dewhurst, Commissioner  
Douglas Howard





**MEDINA - UVALDE - FRIO - ZAVALA**

Sht. 7 of 11

Counter # 76352



File No. Sketch File 21

MEDINA

County

Date Filed: APRIL 24, 2002

by David Dewhurst, Commissioner

Douglas Howard





**MEDINA - UVALDE - FRIO - ZAVALA**

11 of 11 sht.

0000. Hubman

Counter #76354



File No. Sketch File 21  
MEDINA County

Date Filed: APRIL 24, 2002

By David Dewhurst, Commissioner  
Douglas Howard





**MEDINA - UVALDE #33**

Smt. 9 of 11

Counter# 26356

32485 5/11/2008



File No. Sketch File 21  
MEDINA County

Date Filed: APRIL 24, 2002

By David Dewhurst, Commissioner  
Douglas Howard





MEDINA - UVALDE #30

5/17/10 of 11

Counter # 76358



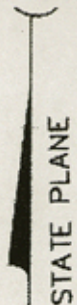
File No. Sketch File 21

MEDINA County

Date Filed: APRIL 24, 2002

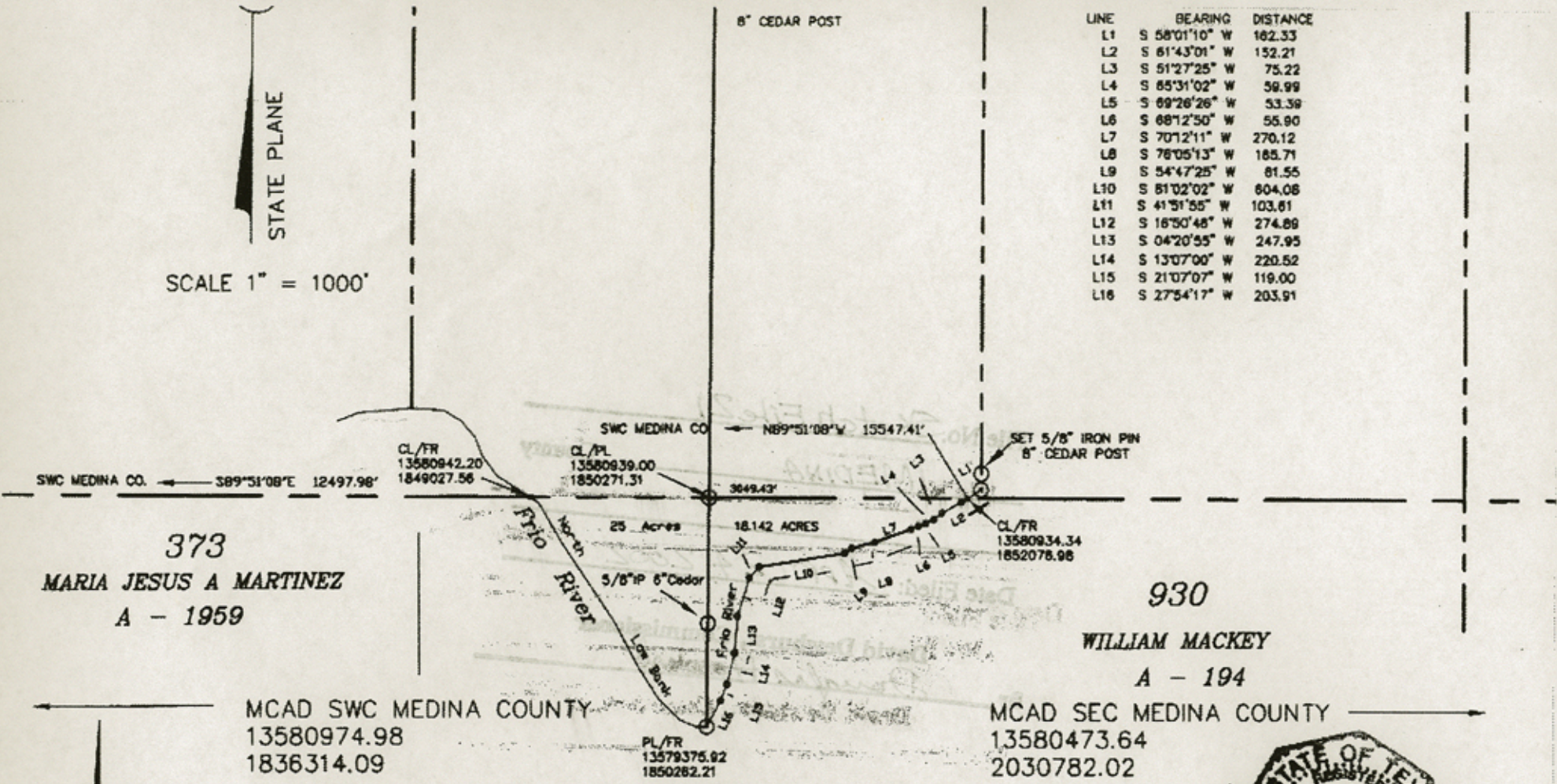
David Dewhurst, Commissioner  
By Douglas Howard





SCALE 1" = 1000'

LINE	BEARING	DISTANCE
L1	S 58°01'10" W	182.33
L2	S 61°43'01" W	152.21
L3	S 51°27'25" W	75.22
L4	S 85°31'02" W	59.99
L5	S 89°26'26" W	53.38
L6	S 88°12'50" W	55.90
L7	S 70°12'11" W	270.12
L8	S 78°05'13" W	185.71
L9	S 54°47'25" W	81.55
L10	S 81°02'02" W	604.08
L11	S 41°51'55" W	103.61
L12	S 16°50'48" W	274.89
L13	S 04°20'55" W	247.95
L14	S 13°07'00" W	220.52
L15	S 21°07'07" W	119.00
L16	S 27°54'17" W	203.91



ACREAGE OF SURVEY NO. 770 WM. M. W. HART,  
 ABSTRACT IN FRIO COUNTY, TEXAS  
 43,142 ACRES

MEDINA COUNTY SOUTH LINE  
 (S89°51'08"E 194468.58' = 36.83 MILES)  
 S89°51'08"E 194253.05'

SURVEYED AND PREPARED BY:  
 HARLAN R. WOLFF  
 REGISTERED PROFESSIONAL SURVEYOR NO. 1502  
 P.O. BOX 424 918 18TH ST.  
 HONDO TEXAS 78861  
 (210) 741-4844



SCALE 1" = 1000'



See Rld. Sk. 21

Counter # 76360

sh 11 of 11



