

LINE	BEARING	DISTANCE
L1	N 44°22'30" W	1.86'
L2	N 23°43'33" W	49.51'
L3	N 71°42'53" W	2.66'
L4	N 13°16'58" W	3.41'
L5	N 33°09'20" W	15.57'
L6	N 77°37'14" W	2.08'
L7	N 10°57'17" W	3.35'
L8	N 32°12'15" W	80.71'
L9	N 73°08'52" W	3.80'
L10	N 29°33'58" W	6.64'
L11	N 01°26'50" W	5.58'
L12	N 31°36'56" W	65.01'
L13	N 22°58'34" W	2.91'
L14	N 75°00'57" W	5.19'
L15	N 17°45'15" W	11.05'
L16	N 13°36'54" E	5.57'
L17	N 21°40'21" W	48.12'
L18	N 42°48'22" W	75.68'
L19	S 79°46'41" W	13.72'
L20	N 61°54'24" W	14.10'
L21	N 10°44'49" W	14.47'
L22	N 32°01'18" E	9.40'
L23	N 42°14'00" W	81.79'
L24	S 81°25'19" W	23.10'
L25	N 40°12'01" W	24.01'
L26	N 01°19'22" W	21.09'
L27	N 46°04'21" W	35.55'
L28	N 80°18'13" W	14.65'
L29	N 52°21'36" W	5.48'
L30	N 22°38'55" W	6.46'
L31	N 45°00'44" W	13.28'
L32	N 53°40'38" W	14.24'
L33	S 76°47'43" W	14.15'
L34	N 48°14'26" W	36.11'
L35	N 16°32'49" E	5.08'
L36	N 60°25'58" W	9.04'
L37	N 82°13'44" W	14.60'
L38	N 41°41'00" W	42.03'
L39	N 34°33'33" W	35.36'
L40	N 02°10'56" W	12.13'
L41	N 23°50'03" W	9.74'
L42	N 47°18'37" W	36.77'
L43	N 71°35'22" W	2.97'
L44	N 53°42'46" W	9.84'
L45	N 62°19'37" W	8.60'
L46	N 88°43'28" W	4.09'
L47	N 45°40'34" W	5.81'
L48	N 23°39'42" E	7.29'
L49	N 46°42'32" W	72.51'
L50	N 46°26'49" W	19.35'
L51	N 56°44'44" W	158.53'
L52	S 55°01'24" W	9.21'
L53	N 08°58'59" W	31.70'
L54	N 57°42'32" W	4.66'
L55	N 65°33'33" W	4.69'
L56	N 51°40'10" W	8.07'
L57	N 20°39'59" W	8.44'
L58	S 22°00'48" W	27.37'
L59	N 65°09'16" W	31.61'
L60	N 21°37'45" E	26.09'
L61	N 66°33'00" W	17.18'
L62	S 53°49'24" W	12.53'
L63	S 84°26'31" W	59.85'
L64	S 44°18'12" W	21.57'
L65	S 68°58'01" W	30.43'
L66	S 89°45'09" W	37.03'
L67	N 73°39'19" W	2.11'
L68	N 29°01'31" E	21.78'
L69	N 77°04'22" E	66.63'
L70	S 88°09'04" E	56.60'
L71	N 53°05'15" E	28.65'
L72	S 66°52'22" E	19.96'
L73	S 66°52'22" E	31.50'
L74	S 66°52'22" E	20.18'
L75	S 07°40'28" E	31.02'
L76	S 56°48'57" E	147.54'
L77	S 50°38'11" E	66.99'
L78	S 45°51'11" E	55.12'
L79	S 46°09'33" E	221.59'
L80	S 47°13'35" E	40.30'
L81	S 46°49'19" E	137.12'
L82	S 42°55'06" E	154.96'
L83	S 24°05'12" E	89.59'
L84	S 32°17'33" E	55.52'
L85	S 32°27'17" E	45.81'
L86	S 32°11'14" E	47.06'
L87	S 32°16'42" E	53.21'
L88	S 12°43'18" W	23.55'

Legal description: 0.4233 Acre Bulkhead Easement Sabine Pass State Park Adjacent to John R. Bevil Survey, Abstract No. 66 Jefferson County, Texas

BEING a 0.4233 acre bulkhead easement situated in Sabine Pass adjacent to the John R. Bevil Survey, Abstract No. 66, Jefferson County, Texas and to the Sabine Pass State Park, said 0.4233 acre bulkhead easement being more particularly described as follows:

NOTE: All bearings are referenced to the Texas Plane Coordinate System, Lambert Projection, South Central Zone, NAD27. Bearing one for also referenced to the Texas Parks and Wildlife Department map of Sabine Pass State Park as prepared by D.D. Shine dated May 16, 1974. All distances are surface.

COMMENCING at Texas Parks and Wildlife Department concrete monument marked "BL104" which has a coordinate value of Y=725870.436 and X=3626801.106

THENCE NORTH 54°01'02" EAST at a distance of 159.57 to the East corner of a 1.267 acre tract Dick Dowling Park.

THENCE NORTH 44°22'30" WEST along the 1974 Shine Survey at a distance of 1.86 to a calculated corner.

THENCE NORTH 23°43'33" WEST along a calculated line at a distance of 49.51 to the point of intersection at the Mean High Water Shoreline.

THENCE along a survey line of the Mean High Water Shoreline the following courses and distances:

NORTH 71°42'53" WEST	a distance of 2.66'
NORTH 13°16'58" WEST	a distance of 3.41'
NORTH 33°09'20" WEST	a distance of 15.57'
NORTH 77°37'14" WEST	a distance of 2.08'
NORTH 10°57'17" WEST	a distance of 3.35'
NORTH 32°12'15" WEST	a distance of 80.71'
NORTH 73°08'52" WEST	a distance of 3.80'
NORTH 29°33'58" WEST	a distance of 6.64'
NORTH 01°26'50" WEST	a distance of 5.58'
NORTH 31°36'56" WEST	a distance of 65.01'
NORTH 22°58'34" WEST	a distance of 2.91'
NORTH 75°00'57" WEST	a distance of 5.19'
NORTH 17°45'15" WEST	a distance of 11.05'
NORTH 13°36'54" EAST	a distance of 5.57'
NORTH 21°40'21" WEST	a distance of 48.12'
NORTH 42°48'22" WEST	a distance of 75.68'
SOUTH 79°46'41" WEST	a distance of 13.72'
NORTH 61°54'24" WEST	a distance of 14.10'
NORTH 10°44'49" WEST	a distance of 14.47'
NORTH 32°01'18" EAST	a distance of 9.40'
NORTH 42°14'00" WEST	a distance of 81.79'
SOUTH 81°25'19" WEST	a distance of 23.10'
NORTH 40°12'01" WEST	a distance of 24.01'
NORTH 01°19'22" WEST	a distance of 21.09'
NORTH 46°04'21" WEST	a distance of 35.55'
NORTH 80°18'13" WEST	a distance of 14.65'
NORTH 52°21'36" WEST	a distance of 5.48'
NORTH 22°38'55" WEST	a distance of 6.46'
NORTH 45°00'44" WEST	a distance of 13.28'
NORTH 53°40'38" WEST	a distance of 14.24'
SOUTH 76°47'43" WEST	a distance of 14.15'
NORTH 48°14'26" WEST	a distance of 36.11'
NORTH 16°32'49" EAST	a distance of 5.08'
NORTH 60°25'58" WEST	a distance of 9.04'
NORTH 82°13'44" WEST	a distance of 14.60'
NORTH 41°41'00" WEST	a distance of 42.03'
NORTH 34°33'33" WEST	a distance of 35.36'
NORTH 02°10'56" WEST	a distance of 12.13'
NORTH 23°50'03" WEST	a distance of 9.74'
NORTH 47°18'37" WEST	a distance of 36.77'
NORTH 71°35'22" WEST	a distance of 2.97'
NORTH 53°42'46" WEST	a distance of 9.84'
NORTH 62°19'37" WEST	a distance of 8.60'
NORTH 88°43'28" WEST	a distance of 4.09'
NORTH 45°40'34" WEST	a distance of 5.81'
NORTH 23°39'42" EAST	a distance of 7.29'
NORTH 46°42'32" WEST	a distance of 72.51'
NORTH 46°26'49" WEST	a distance of 19.35'
NORTH 56°44'44" WEST	a distance of 158.53'
SOUTH 55°01'24" WEST	a distance of 9.21'
NORTH 08°58'59" WEST	a distance of 31.70'
NORTH 57°42'32" WEST	a distance of 4.66'
NORTH 65°33'33" WEST	a distance of 4.69'
NORTH 51°40'10" WEST	a distance of 8.07'
NORTH 20°39'59" WEST	a distance of 8.44'
SOUTH 22°00'48" WEST	a distance of 27.37'
NORTH 65°09'16" WEST	a distance of 31.61'
NORTH 21°37'45" EAST	a distance of 26.09'
NORTH 66°33'00" WEST	a distance of 17.18'
SOUTH 53°49'24" WEST	a distance of 12.53'
SOUTH 84°26'31" WEST	a distance of 59.85'
SOUTH 44°18'12" WEST	a distance of 21.57'
SOUTH 68°58'01" WEST	a distance of 30.43'
SOUTH 89°45'09" WEST	a distance of 37.03'
NORTH 73°39'19" WEST	a distance of 2.11'

SHINE SURVEY 1974
LIMITS OF CONSTRUCTION

PROP. NEW BULKHEAD

Y=726853.41
X=36268119.53

FAILED EXISTING BULKHEAD (EROSION BEHIND BULKHEAD)

MEAN HIGH WATER SHORELINE

EXIST. BULKHEAD

SHINE SURVEY 1974

Y=726832.86
X=3625961.28

PROP. NEW BULKHEAD

FAILED EXISTING BULKHEAD (EROSION BEHIND BULKHEAD)

MEAN HIGH WATER SHORELINE

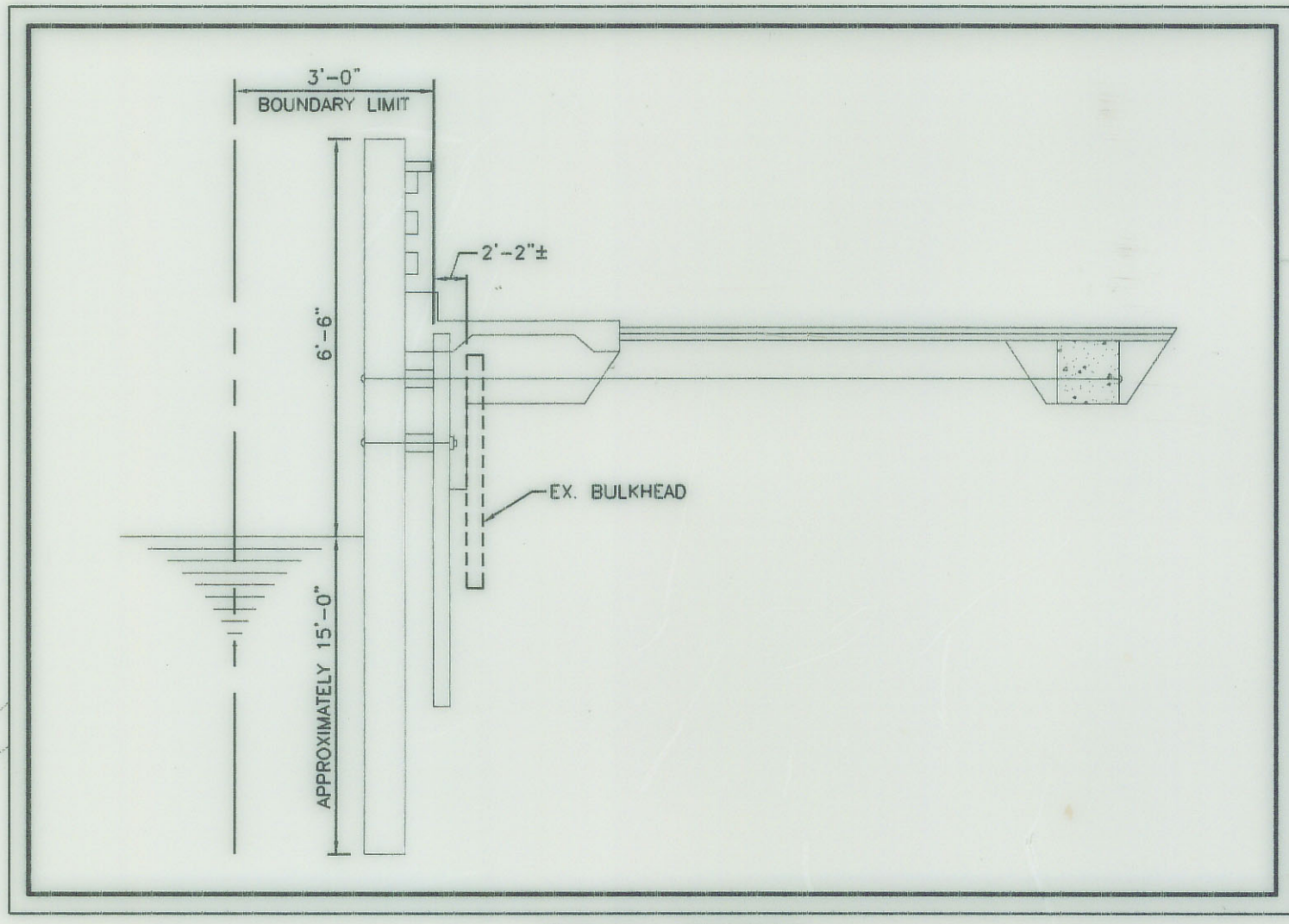
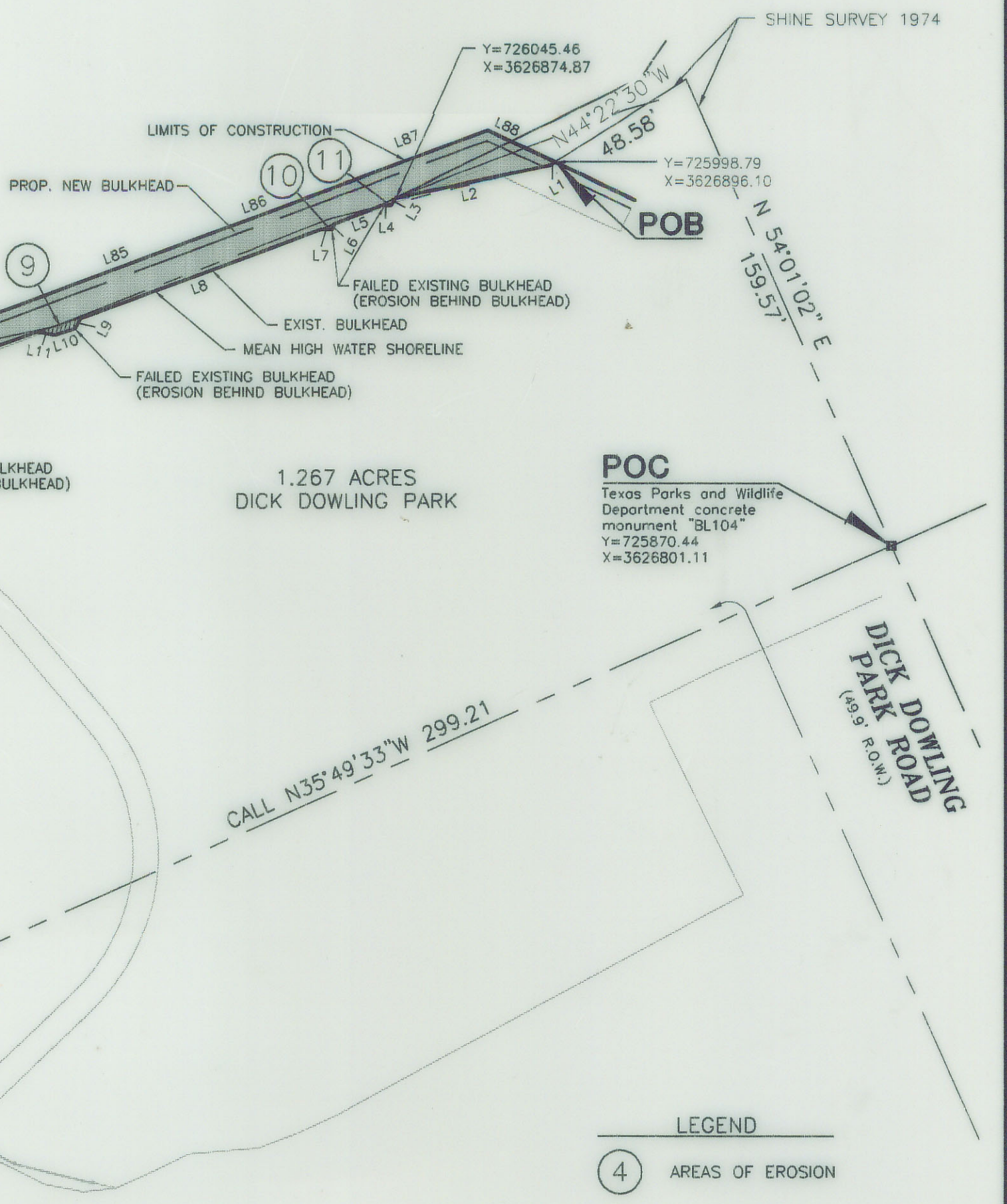
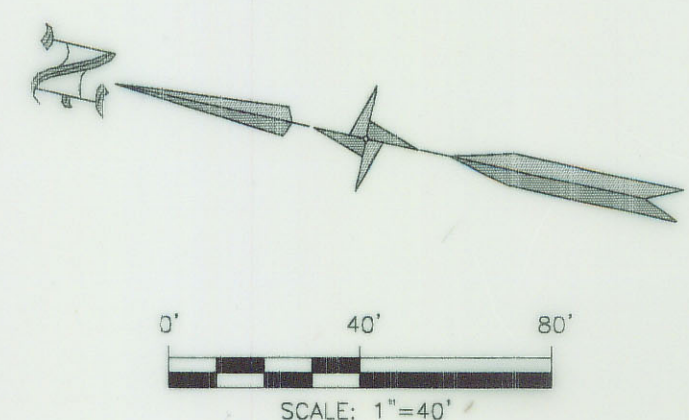
LIMITS OF CONSTRUCTION

THENCE along and with the limits of construction being three feet East of the proposed bulkhead the following courses and distances:

NORTH 29°01'31" EAST	a distance of 21.78'
NORTH 77°04'22" EAST	a distance of 66.63'
SOUTH 88°09'04" EAST	a distance of 56.60'
NORTH 53°05'15" EAST	a distance of 28.65'
SOUTH 66°52'22" EAST	a distance of 19.96'
SOUTH 66°52'22" EAST	a distance of 31.50'
SOUTH 66°52'22" EAST	a distance of 20.18'
SOUTH 07°40'28" EAST	a distance of 31.02'
SOUTH 56°48'57" EAST	a distance of 147.54'
SOUTH 50°38'11" EAST	a distance of 66.99'
SOUTH 45°51'11" EAST	a distance of 55.12'
SOUTH 46°09'33" EAST	a distance of 221.59'
SOUTH 47°13'35" EAST	a distance of 40.30'
SOUTH 46°49'19" EAST	a distance of 137.12'
SOUTH 42°55'06" EAST	a distance of 154.96'
SOUTH 24°05'12" EAST	a distance of 89.59'
SOUTH 32°17'33" EAST	a distance of 55.52'
SOUTH 32°27'17" EAST	a distance of 45.81'
SOUTH 32°11'14" EAST	a distance of 47.06'
SOUTH 32°16'42" EAST	a distance of 53.21'
SOUTH 12°43'18" WEST	a distance of 23.55'

THENCE SOUTH 12°43'18" WEST at 8.34 feet pass the line of mean high water as established on April 15, 2002, and continue for a total distance of 23.55' to the POINT OF BEGINNING, having an area of 0.4233 ACRES, more or less.

AREA NO.	AREA IN SQUARE FT.
1	868.18
2	69.86
3	131.28
4	134.90
5	2,847.54
6	636.69
7	398.70
8	54.59
9	27.50
10	3.20
11	3.87
TOTAL	5,176.31



TYPICAL SECTION N.T.S.

ADDED SECTION 33.136 NATURAL RESOURCES CODE NOTICE TO DRAWING AS REQUESTED BY G.L.O.

JOHN R. BEVIL SURVEY ABSTRACT No. 66

22.8495 ACRES
PARKS AND WILDLIFE DEPARTMENT
OF THE STATE OF TEXAS
VOL. 1746, P.C. 348
D.R.J.C.

NOTICE: This survey was performed in accordance with Section 33.136, Natural Resources Code, for the purpose of evidencing the location of the shoreline in the area depicted in this survey as that shoreline existed before commencement of erosion response activity, as required by Chapter 33, Natural Resources Code. The line depicted on this survey fixes the shoreline for the purpose of locating a shoreline boundary, subject to movement landward as provided by Section 33.136, Natural Resources Code.



D.D. SHINE - LICENSED STATE LAND SURVEYOR

MARK W. WHITELEY - REGISTERED PROFESSIONAL LAND SURVEYOR No. 3636

TEXAS GENERAL LAND OFFICE
Art. 33.136, Natural Resources Code
County JEFFERSON, Sk. No. 2
File Date 9/20/00 by D.J.H.

MARK W. WHITELEY AND ASSOCIATES INCORPORATED
CONSULTING ENGINEERS, SURVEYORS, AND PLANNERS

P. O. BOX 5492 BEAUMONT, TEXAS 77726-5492
409-892-0421

3250 EASTEX FRWY BEAUMONT, TEXAS 77703
(FAX) 409-892-1346

CLIENT: SABINE PASS STATE PARK

GENERAL LAND OFFICE "EXHIBIT"
0.4233 ACRE BULKHEAD EASEMENT
SABINE PASS STATE PARK
ADJACENT TO
JOHN R. BEVIL SURVEY, ABSTRACT No. 66
JEFFERSON COUNTY, TEXAS

DR. BY:	CK. BY:	APP. BY:
J.M.C.	J.M.C.	J.M.C.
VER. ACAD 2000	SCALE: 1"=40'	SHEET NO. 1 OF 1
DATE: 5-03-02	FILE: H:\DWG\99-770GLO	REV. 1
JOB NO. 99-770	FILE: H:\DWG\99-770GLO	REV. 1

NRC 33.136 JEFFERSON Co. SKETCH No. 2