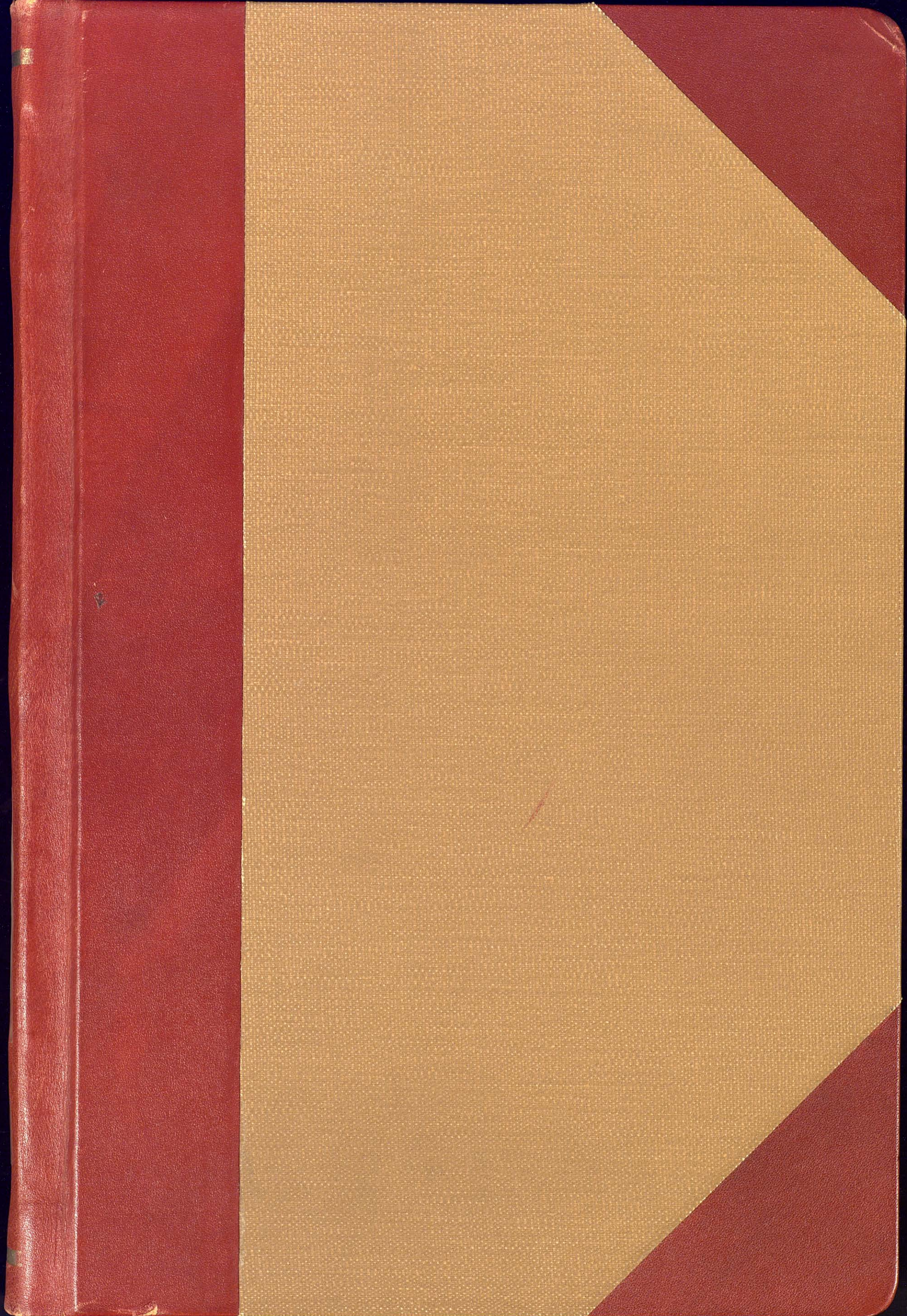
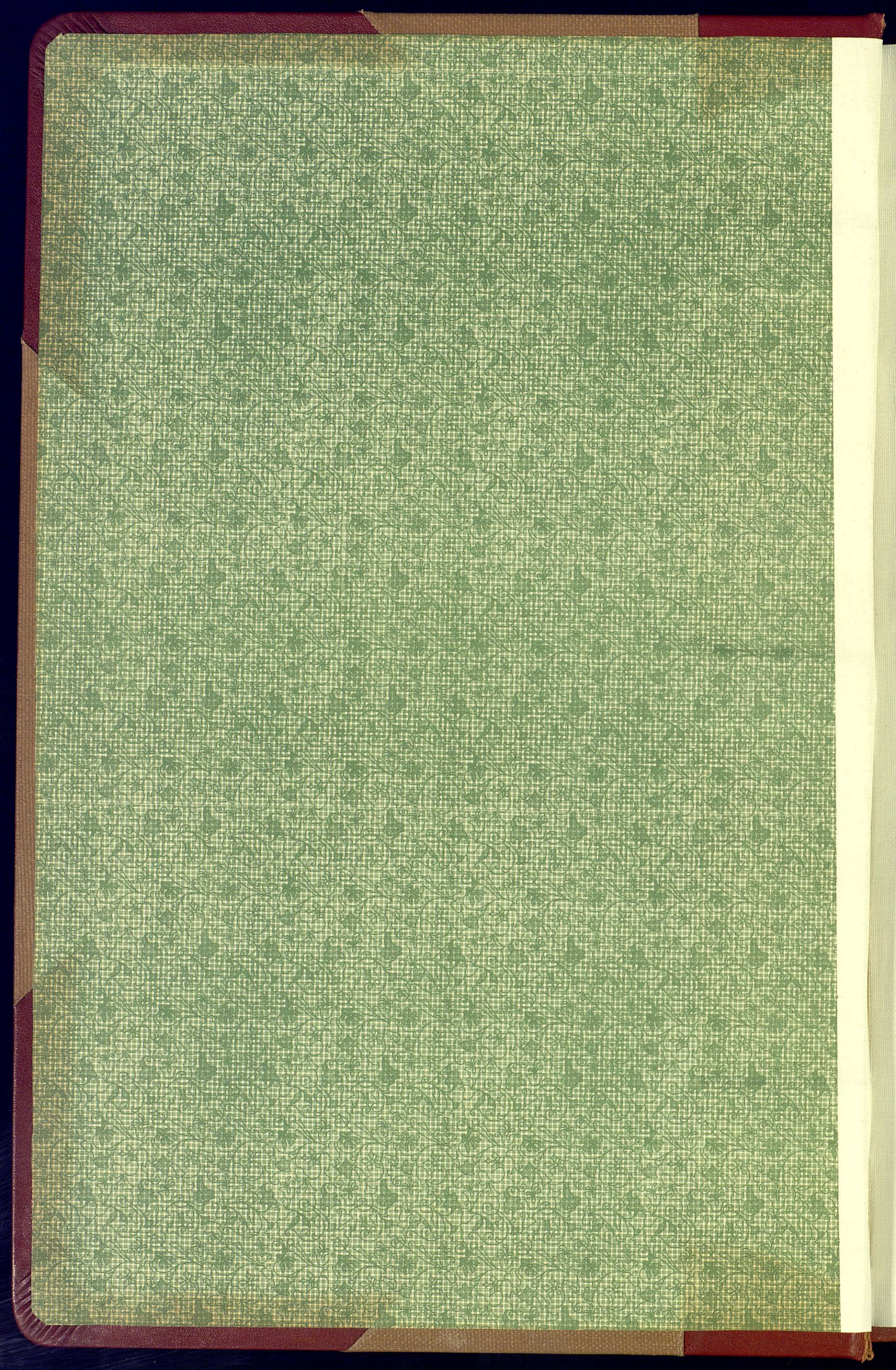


FIELD NOTES VOL. 1 DALLAM CO. BLKS. C-S

SHELF 7

∞





Duplicate copies of these field
notes in bound volume, sent to
J. W. Pigman, County Surveyor,
Dalhart Texas. Oct. 31st 1925 -
See Letter Book 1548, page 437

VOLUME 1
FIELDNOTES
PUBLIC SCHOOL LAND
ACT 1900
DALLAM COUNTY P.S.L. BKS. C-S.



J. T. ROBISON, COMMISSIONER
J. H. WALKER, CHIEF CLERK

General Land Office
State of Texas
Austin

October 27, 1925

Field notes of Surveys Nos.
1 to 85, inclusive, Block CS, Public School,
Land, Dallam County, contained in this Volume,
received and filed in the General Land Office
on the 25th day of May, 1925.

J. T. Robison
Commissioner

Examined and Approved

8th day of June 1925.

J. T. Robison
Commissioner

J. P. DOD

TOPOGRAPHIC, LAND AND IRRIGATION SURVEYING

FORT DAVIS ~~XALPINE~~ TEXAS

May 21 1925.

1326

Hon. J. T. Robison
Commr. Gen. Land Office
Austin Texas.

RECEIVED
MAY 25 1925
Map.

Dear Sir,

I am forwarding to you under separate cover the fieldnotes sent to me for correction and calls for windmills omitted.

In the Dallam County Tract the call for the League corner at the N E corner of survey 64, and S E 33, is corrected. In Survey 70, which was sent back for correction or explanation of the difference between the calls in the fieldnotes and the calls on the Plat sent you by my father, I find that the call of S 89°46'W 468.1 varas for the South line of 70 is correct and can be checked by the total distance between this corner of 70 and the corner of 65, given in the report and in the Partition Line Notes. The call of N 89°44'W 504.1 varas on the plat is in error and should be corrected to read N 89°42'W 471.5 varas, the change in course was to fit the Lane fence and call at this point, and the distance of 504.1 varas was taken from the preliminary survey notes and does not take into consideration the Lane calls, as the final survey does. I have corrected the West line to read North 1974 varas instead of North 1985.

The call in Survey 85, of S 89°44'E 482.5 varas on the plat should be corrected to read S 89°42'E 471.5 varas, to the west line of the lane, which was taken at this point, and in the next call S 0°42'E instead of South as shown on the plat. This course of south was taken from the Partition Notes and is the call for the Syn. Subdivision Line, at this point and not the Lane call which was taken for the final survey. I believe that this covers all points in the Dallam County Lands to be corrected.

In the Hartley County Tract, I have given the calls for windmills and for the League Corners, and have corrected the fieldnotes of the Rim surveys as follows.

Survey 1, the first call of the bluff meanders is corrected to S 3°50'W 156 varas, the 19th. call from S 18°W 179 varas to S 18°E 179 varas, the 23rd. call from N 72°W 71 varas to N 72°E 71 varas, the 40th. call from S 13°30'W to S 13°30'E 100 varas, the 42nd. call from S 83°E to S 83°W 181 varas, the 54th. call from West 27 to West 28 varas, and the 55th call from N 0°49'W 2917 varas to N 0°49'W 2874 varas, this closes the survey and also corrects the calls of the adjoining surveys. Survey 2, I have corrected the North line to read 2673.8 varas, Survey 10. I have corrected the West line to read S 0°49'E 1205 varas.

Hoping that these corrections and explanations of the difference between the fieldnotes and plat meet with your approval I am,

Box 33
Fort Davis Texas.

Yours respectfully

ere of these leagues, which were created by a connected chain of corners starting at the Monument at the N. E. corner of the State. The land awarded to the owners of these leagues was that selected by the Partitioners acting under the authority of the State.

d.

REPORT
of a Survey of
276110 acres of land in Dallam Co.
and
30225. acres of land in Hartley Co.
Texas,
made for the State of Texas, May, June, July 1924
by R.S.Ded,

Hon. J. T. Robison,
Commissioner General Land Office
Austin, Texas,

Dear Sir,

I herewith respectfully submit the following Report of the Survey recently made by me for the State of Texas of lands in ~~the~~ Dallam and Hartley Counties, Texas.

Object of the Survey.

To definitely mark on the ground the lines and corners of two tracts of land awarded to the State of Texas by final Decree in the 53rd Judicial District Court, Travis Co. Texas, dated April 26, 1924, in cause No 36183, wherein the State of Texas was Plaintiff and Geo. P. Finlay et al. Defendants.

And to subdivide said tracts of land into lots suitable and convenient for sale as part of the Public Free School Land.

Authority for the Survey.

A letter from the Hon. Commissioner of the General Land Office of Texas dated April 28, 1924, appointing me as Surveyor for the State of Texas, for the purpose of surveying the lands recovered by the State from the Capitol Syndicate in Dallam and Hartley Counties, Texas.

Data for the Survey.

Copies of the Official County Maps of Dallam and Hartley Counties.

Copy of the Decree of Court awarding these lands to the State.

Copy of the Report of the Partitioners appointed by the Court to select these lands, containing maps and detailed description of the lands selected by the Partitioners and awarded by the Court according to said maps and descriptions.

Copy of Schedule "X", a map of the Capitol Syndicate Leagues showing those leagues set apart by the Court for the selection of the acreage recovered by the State.

Lithograph maps, kindly furnished by the Trustees of the Capitol Syndicate lands, showing the original league lines and corners as surveyed on the ground, and the Capitol Syndicate Subdivisions of said Leagues, which Subdivisions were used by the Court in Schedule "X" in the description and definition of the lands from which the Partitioners were to select the required acreage for the State.

These Capitol Syndicate Subdivisions were also used by the Partitioners in describing the lands selected by them in their report, which description of said lands was accepted and approved by the Court and made part of the Decree awarding these lands to the State of Texas.

Preliminary Examination of Field Notes.

The Land to be surveyed was that awarded by the Decree of the Court to the State of Texas out of the lands known as the Capitol Syndicate Grant.

The original survey of the 3000000 acres constituting the Capitol Syndicate Grant was made on the ground in subdivisions of Leagues. The field notes of these leagues are found in the Patents to these Leagues issued by the State and on record in the General Land Office.

I was already familiar with the lines and corners of the original leagues in Dallam and part of Hartley Counties, having assisted in a resurvey of these leagues made some years ago for and by the authority of the State of Texas, and knew the location on the ground of many of the original marked corners of these leagues, having identified them by a connected chain of corners starting at the Monument at the N.W. corner of the State.

The land awarded to the State out of these leagues was that selected by the Partitioners acting under order of Court.

The lands selected by the Partitioners are described in their report ~~xx~~ by metes and bounds, as starting at or tied to certain marked corners of the leagues patented to one Abner Taylor, and running thence by course and distance on such lines as contain the required acreage allotted to the State. The lands are further described as including or covering certain of the Capitol Syndicate Subdivisions of the original leagues.

These Subdivisions are known by the survey and block numbers as given on the Capitol Syndicate maps. They are marked on the ground by iron pipes driven at the survey corners and stamped with the numbers of the adjacent subdivisions, and frequently tied to original league corners. The course and distance of the lines of these subdivisions, and the relative position of the league corners, and the acreage of each subdivision, are given on the Maps of the Capitol Syndicate lands issued by the Capitol Syndicate and used by the Partitioners in their report to the Court on which the award was based.

The Report of the Partitioners states that under order of Court they made an actual survey, with transit and chain, of the lands described in their report.

I was one of the Partitioners appointed by the Court and was on the ground when the selection of the lands awarded to the State was made, and acting as surveyor ran the transit and chain for the survey on which the description of the selected lands by metes and bounds was ~~made~~ based, and therefore was familiar with the actual location on the ground of the marked corners and lines, and the objects natural and artificial called for in the field notes describing the acreage of land awarded to the State of Texas by the Decree of Court based on the Report of the Partitioners appointed by the Court to select and define said acreage of land.

History of the Survey.

Having arranged for the equipment and men necessary for the field work of the survey, we went to Dallam County and camped on the Dallam Co. tract of State land on June 8th 1924.

We began our survey at the pipe marking the S.W. corner of the tract and tied to the S.W. cor of Abner Taylor League No. 46, which bears S 51° 50' W 37.5 varas. The League corner was marked by a 3" iron pipe and had been identified on a former survey for the State as noted above.

We later replaced the iron pipe at the S.W. cor sur 70 Cap. Syn. Sub. by a concrete monument 3' long with 2' above the ground, to mark the S.W. corner of the State land.

Thence we ran north along a fence, noting 1 1/2" iron pipes marked with the numbers of the Cap. Syn. Subs. in their Blk 19, and some other pipes and stakes said to have been set for subdivisions of the land west of the fence. This fence belongs to parties owning the lands on the west.

We set one of our 16' flags at this starting corner and could see it from a point 4 1/2 miles north. We reset the iron pipes where necessary for correction of line or distance, chaining twice between the S.W. & N.W. corners of the State tract. Later we marked these old pipes with an "S" and the number of our adjacent subdivision or lot. At S.W. cor of our sub. 80 we set a gal. iron pipe 5 miles south of the north line of tract and 40 varas north of the iron pipe marking N.W. cor Cap Syn. Sub 55. This was done in order to carry the even miles as far south as possible and throw the excess distance into the most southerly surveys.

At the N.W. cor of the tract we later set concrete monument and from this N.W. corner we ran east at a magnetic variation of 12° 15' E, which we found to fit the Cap. Syn. Sub. lines. We found the old pipes under this fence, in places a few inches to 1 vara out in distance, and reset them on line at true distance, chaining and re chaining the line for 5 miles east to a point in the Dalhart and Boise City highway, the road bed having been sold to the County by a Deed of record giving the field notes of the land purchased for this road through the Cap Syndicate lands.

Later we set a concrete Mon. on the west side of the road on the north line of the State land at 10.8 varas west from the 5 mile point near the middle of the road, and another Concrete Mon. on the north line of the State land at a point 10.8 varas east from the 5 mile point in the road, leaving a width of 60' for road as called for in the field notes.

The fence along the north line surveyed was accepted by the partitioners as the dividing line between the State land and the Capitol Syndicate land, the ownership of the fence remaining with the Cap. Syn.

From this N.E. cor of the part of the tract west of the road we ran south, along the west side of the road, crossing and recrossing the fence. The greater part of the fence was out in the road, from a few feet to 5 or 6 varas. The old pipes had been set on the survey line in the middle of the road and had been pulled up when the road was graded. Two of them had been set up under the west fence but were some 12 to 16 varas out of place. The field notes of the road on record show that the Cap. Syn. Sub. section line was the middle of the road and that a strip 10.8 varas wide on either side of this line was the limit of the road bed. We set our pipes according to these field notes 10.8 varas west of the Cap. Syn. Sub. section line at one mile intervals, and later marked them with the numbers of our adjacent lot or subdivision, and set another set of pipes 21.6 varas east of these for the east side of the road, finding this fence also crooked, and marked them for our subdivisions.

Both these fences belong to the State, neither of them intrude on the graded road bed, although they intrude on or recede from the road bed outside the ditches.

Running south along the west side of this road from the N.E. corner of this part of the tract, at 5 miles and 84 varas (exact distance called for) we reached a point 1.5 varas east of a large post from which a fence ran N 89°42'W 1901 varas to an iron pipe marked for the N.W. cor Cap. Syn. Sub. 66.

The extension of this fence east and would reach a high post at with pipe on south side of it, at the west end of the south fence of the part of this tract east of the road.

We set a concrete Mon 10.8 varas south of our 5 mile and 84 vara point for the S.W. cor of the road, and 471.5 varas S 89°42'E set another Mon. at turn of road, and 1198 varas S 0°43'E set Mon. about 3 varas inside of fence for S.E. cor of our lot 85, on west side of road, 10.8 varas west of cap. Syn. Sub. corner.

We ran from this Mon. N 89°42'W 2386- 10.8 varas to an iron pipe set for S.W. cor Cap. Syn. Sub 66 and 1108.5 varas south of pipe at N.W. cor ad Sub. 66 noted above at the end of fence running west N 89°42'W 1901 varas from our ~~XXXXXXXXXXXXXXXXXXXX~~ 5 mile & 84 vara point on west line of road.

We then ran on N 89°42'W 1900.8 varas and marked pipe for S.E. cor of our lot 83. On 1900.8 marked pipe for S.W. cor our 83. On 1900.8 marked pipe for our S.W. 82. On 1881 varas to our Mon. at S.W. 83, above described as S.W. corner of Dallam Co. tract.

We then ran meridian lines from the mile corners set on north fence to the south line. We set pipes at even mile distances from the north for 5 miles throwing the excess southing of the Cap Syn. Subs. into the southerly surveys, 40 varas on the west line, 84 on the east line, in order to preserve as much uniformity as possible in the 320 acre lots, and throw the excess acreage into the surveys on the south which were already irregular.

We then ran transit lines east and west from the outside corners checking any irregularities in chain measurement on our meridian lines. We could see our flags across the full 5 miles on some of the lines, and on the others three flags were sufficient.

In like manner we ran the north line of the part of the Dallam Co. tract which lies east of the road.

Starting from the Mon. on the road we ran 1890 varas and set pipe, on 1900.8 varas set pipe, on 1900.8 set Mon. for N.E. cor of tract.

This line ran along a fence which the Partitioners recognized as the dividing line between the State land and the Capitol Syndicate land, the Cap. Syn. retaining ownership of the fence.

We turned south and ran south setting pipes at even mile distances for 4 miles, then on south 1401.5 varas to a point in the north line of sur 69 in Blk 47 1/2 H. & T. C. Ry. Co. Here we found a Cap. Syn. Sub. pipe marked 60 61 lying down some 12 steps south of an old fence running nearly east and west.

Thence we ran S 89°20'W 721 varas to an iron pipe 15 steps south of fence corner and some 1 1/2 varas east, marked "B 19". Thence S 0°40'E 554 varas to an iron pipe standing east of the end of a fence about 1 vara.

The fences on these 721 vara and 554 vara lines was allotted to the State and I was informed that the Cap. Syn. would soon set a fence along the east line as marked by our survey.

We now returned to the S.W. cor of our lot 70 on the east side of the Dalhart road and found that the road in order to make the turn at this point would ~~xxx~~ cut a corner off of this survey for about ten varas on the west line and 11 varas on the south line and set a monument at each point to mark the road, and set a pipe 471.5 varas S 89°42'E for the corner of the road on the south line of our lot 70, and a monument 10.8 varas south, at the west end of the south fence as before described.

From this monument we ran N 89°46'E along a fence on the south boundary of our 70, 1890 varas from the west line of 70, and set pipe and marked it "S" 82 for S.W. cor our 71. On 1900.8 set pipe for S.W. 68. on 1183 varas reached pipe set at east ~~xxxxx~~ end of fence as described above, and set monument. At pipe N 9°40'W 554 set monument, On N 89°20'E 721 varas set monument for S.E. corner of Dallam County tract. The fence along the south line was allotted to the State.

We then ran the meridians from the corners on the north line to the south line, setting pipes at even mile distances for 4 miles and throwing excess into south surveys.

We then crossed these meridians with transit lines from corners on the east and west lines, correcting for errors in chaining meridian lines.

Our subdivisions were laid out under the personal instruction of the Commissioner of the General Land Office, who was with us on the ground and went over and examined each and every subdivision.

These lots or subdivisions were laid out one mile north and south and 1/2 mile east and west, where possible, containing 320 acres of land each, except where the irregular course of the west line and the road through the tract diminished the acreage. And on the south line of the tract where the construction and acreage was necessarily changed as shown on plat.

I would note that on the east line we tied the S.E. cor of our lot 33 to the S.W. cor of the Abner Taylor League No. 41, which was marked by a mound of white rocks one set in the ground and marked "X", and an iron pipe marked C L 40 41 and stood N 70°12'W 194 varas from our S.E. 33.

This was one of the marked points noted by the Partitioners in their report and is noted here to show that the land we surveyed for the State is the same land allotted to the State by the Partitioners, and that it was part of the land claimed by the Capitol Syndicate under the Abner Taylor patents to the original 3000000 acre grant and does not include or conflict with any lands outside of the limits of the original 3000000 acre grant.

Hartley Co. Tract.

The surface and the shape of the Hartley County tract of land awarded to the State, are quite different from the Dallam County quadrangle.

This tract is irregular in shape, and the west, south and east sides are cut by the intrusion of the rim rock and deep draws, which, in places, are difficult to cross.

We went to the N.E. corner of the tract of land recovered by the State in Hartley County, at an iron pipe set for the N.E. corner of Capitol Syndicate Subdivision No. 86 in their Blk 21 and ran south.

At 272 varas passed pipe set for N.W. corner Cap. Syn. Sub. 83, on at 2173 varas reset pipe on line, On 1900.8 varas reset pipe on line, on 1900.8 varas reached old pipe set for the S.E. cor Cap. Syn. Sub. 88, and connected there with a pipe set at the N.W. cor Cap. League 234, which was found 866 varas north and 143 varas west. This connection is called for in the report of the Partitioners.

There is a fence near the line we ran south, but at the start it is some 15 varas or more east of the N.E. corner of the State land, and crossed and recrossed our line, being on our line at the 3 mile and 272 varas where we tied to the League corner. The Capitol Syndicate retain the ownership of this 3 miles of fence and intend to move it to the line we ran.

Returning to the N.E. corner of the State land we ran N 89°53'W as called for and at 1900.8 varas set a pipe marked for our subdivision. At 3801.6 varas pass ~~xxxxx~~ old pipe, fence some 16 varas south, on at 846 varas pass an iron pipe set on line on edge of draw, on 72 varas, 918 varas in all set monument for the N.W. corner of the State land at N.W. cor Cap. Syn. Sub. 108.

A fence starts some 16 steps north of our line at the N.E. corner of ~~xxx~~ the State land and crosses the line at about 3/4 of a mile west and passes to the two mile corner about 18 varas south, runs on west about 600 varas and then turns south to the bluff. This is an old fence set before the Cap. Syn. Sub. were surveyed. It was allotted to the State.

Returning to the pipe at S.E. cor Cap. Syn. Sub. 88, we ran south 5 miles along a fence, resetting pipes at mile distances. At the 5 mile point we found the fence made a sudden bend to the west and found a pipe 7 varas west of line. Moved it to place.

We ran this line instead of the west line as it ran over a level surface and could be measured more easily and accurately with the chain than the west line which ran over the rim rock and several steep hills.

Returning again to S.E. 28 C.S.S. we ran east along a fence, at 1900.8 varas set pipe, on 1900.8 found pipe at corner of fence.

Here later we set monument for outside corner of State land. The fence on this line is straight and on the line. The Cap. Syn. retain ownership of it.

We turned south, ran along a fence (on line) 1900.8 varas to a pipe. later we set monument for outside corner of State land.

Thence we turned east and ran along a fence (fairly straight) 1900.8 varas and set pipe. Thence ran N 89°44'E 1897 varas to an iron pipe set along side a large fence post for N.W. cor Cap. Syn. Sub. No 38.

This post was the corner where the fence turned south and ran 1899 varas to another large corner post with pipe along side of it, set for the S.W. cor of sd sur 38. We found that this mile of fence had been run out by the Cap. Syn. for the purchaser of sd sur 38 and that he had fenced and was holding to this line. These pipes and this fence were the marks accepted by the Partitioners as the dividing line between sd sur 38 and the State land, though they did not know that any shortage would be caused by them.

On the other hand, running west from the S.E. cor sd sur 38 comes out 9.9 varas north of the pipe at S.W. 38, and running east from the S.W. cor 55 comes out 8 varas north south of the same pipe.

Hence we find the south line of State lots 36 & 37, and North line 41, 40 & 38 running N 89°44'E. Which gives an excess in northing of some 19 varas on the east side of State lots 39 & 40.38.

The survey seems to have been distorted by the league corner at the reentrant corner on Cap. Syn. Sub. 26.

The three corners at the jog at N.E. cor of State 38, were found marked by a pipe at the north corner, a pipe at the middle or league corner, and a pipe and small concrete monument at the east corner on the Rt. of way fence of the F.W. & D.C. Ry.

We set concrete monuments at the N.W. and S.W. corners of Cap Syn. Sub. 38, and at each of the three corners at the jog at N.E. cor State 38.

We now ran down the right of way fence at S12°08'W, a straight course with the fence, setting pipes (later) at the intersections with lines from the west.

We found a jog in the fence 174 varas N 12°08'E from the north line of the Channing survey. The fence turned west for 36.8 varas and then S 13°11'W 174 varas. This jog was made to let the road cross the R.R. track.

We set monuments at the end of the Rt. of Way fence and at the end of the 174 vara run.

The north line of the Channing survey shows to be the south line of Cap. Syn. Sub. 35, or the State lot 69.

We found this line for 1895 varas west marked by a fence set over certain stones set in the ground and marked, and certain pipes. The pipe at 1895 was marked "C Town L", and one 189 varas east was marked 35 45 for adjacent Cap. Syn. Subs.

Testing this fence by the location of the most westerly pipe relative to corners south and west, we found that it ran at a course which brought it out 19 varas north of the point reached by the course called for, at the east end. We also noted that this fence is shown on the Cap. Syn. map as running north of the south line of their 35.

But on examining the Deed Records we found that the acreage tracts on the north line of the Channing survey had been sold and that tracts 16, 17, 18, &c called in the deeds for the marked rocks and pipes found under the fence, and we saw that the more easterly tract had been planted in wheat and eats up to the fence, shewing that the owners were claiming to this boundary.

On consultation with the Commissioner of the General Land Office we were instructed to accept this fence as the south line of the State land and we set a concrete monument at either end of it to mark the south line of the State land at this point.

From the westerly one of these two monuments we ran S 3°15'E 266 varas and set a monument.

Thence we ran N 89°55'W 3624 varas to S.W. cor our 73, set 4 miles south from our monument at N.W. 34, and set a monument.

From this monument we ran south 2640.6 varas and set a monument for the S.E. corner of the Hartley County Tract of State land.

Returning to the monument at S.W. 73 we ran west 1900.8 varas and set pipe, on 1900.8 varas to S.W. 77 above described. On west 1900.8 to a pipe set and marked for S.W. 79. The last three miles ran along a fence which was close to our line, but running on from SW 79 the fence crossed our line and at SW 81 it was 8 vara south, at N.W. 83 the fence was 10 varas south and nearly as far west. From the rise a little south of this pipe which we set at N.W. 83 we could see two miles north to where the fence ran over a pipe set for SW 52, and found course checked.

We ran S 0°47'W and at 2239 passed about 8 varas west of windmill, on at 2640 varas set Monument

From this monument we ran east setting and marking pipes at 662 varas, and at even mile distances connecting with our monument set at S E corner of State land.

As a check we went to our N.W. cor 86 as described above and ran 3640.6 varas south connecting with our pipe on the south line of the tract.

We then ran meridian lines from

N.W. 7	to	SW 28
N.W. 9	to	SW 24
N.W. 21	to	NW 90
N.W. 34	to	SW 73
N.W. 51	to	NW 84
N.W. 56	to	NW 86

Then we crossed these meridian lines with transit lines run east and west, so that each pipe was checked from two directions.

The subdivisions of the State tract in Hartley County were made under the personal direction of the Commissioner of the General Land Office, who inspected the surveys on the ground.

We ran the meanders of the rim rock making the boundary of survey 1, and also of survey 10, and made plane table survey of the mesa line and rim of draws, sufficiently close as to indicate the general course of a draw through the surveys, and the extent of valley or mesa land on a subdivision, as shown on plat of Hartley County Tract.

Each outside corner was marked by a concrete monument and each pipe marked with an "S" and the number of the adjacent lot of State land.

The survey followed the metes and bounds of the Decree of award and on the north it was marked by pipes and fences accepted by adjacent land owners. On the east the Rt of way fence of the F.W. & D.C. Ry. fixed the boundary. The Channing line was discussed above. The south line was run as called for in the field notes of the award, but so far we had no definite marks for the dividing line between the State land and the H. & T.C. Block 49 adjacent on the west.

We had the notes and marks of the Cap. Syn. Survey line showing where they claimed the line, and the call of the Partitioners for this marked line.

The question of possible conflict between the State and the H. & T.C. had to be determined.

On consulting Cap. Hewrens map of the Syn. Subdivisions it showed that he had connected what he showed on his map to be the original NW corner sur 14 and NE cor sur 15 Blk 49 with his N.W. corner of sur 108 Cap. Syn. Subs. which is the N.W. corner of the State land. But the pipe set at N.W. 108 stands back on the edge of the draw some 72 varas east of the true corner, or full distance, and although it is shown on the map as set back we had no data by which we could tell how far back.

On running the west line of our 83 we passed the well at 2239, and 64.8 varas on reached a pipe marked 22 33, evidently intended for the corner of these surveys in Blk 49, but this was not an original Blk 49 corner.

We examined the field notes of Blk 49 on record in Channing, and found that the original surveyor had placed a row of marked corners with bearings on the line one mile west from the east edge of the block. With copies of the field notes we went on the ground at our N.E. cor sur 82 State land and ran west 730 varas the distance called for to the west line of the State land, on west 1901 varas, 2631 varas in all, then turned south and ran 403 varas to a point 5.3 varas east of a rock mound from which the bearings called for at N.W. cor sur 27 Blk 49 H. & T.C. fit the calls. These bearings were plain and unmistakable. This showed that there was no conflict between the H. & T.C. Ry. east line and the west line of the State land, but that there was a slight excess in westing between them. This Blk 49 cor was found 403 varas south of our State land line here and on west line our 83 it was found 403 varas south and on our line. The NW cor 27 was found 5.3 west, so that if any difference in variation was made in the two blocks the H. & T.C. would seem to require the greater and would run away from and not toward the State line.

I think this covers the facts on which the survey was based, the methods employed, the facts developed and the results obtained on the survey.

If any further details or explanations are desired I will gladly furnish them if you will kindly notify me.

Respectfully submitted

R. S. Ded

R. S. Ded
Licensed Land Surveyor

Alpine, Texas, July 17 1924



This is a plat of the survey made by ...
 The original map of the survey made by ...
 The survey was made by ...
 The sections are numbered 1 to 36 ...
 The bearings and distances are ...
 The north arrow is at the bottom center ...

Public School Land
 (Acquired from Captain ...)
 Surveyed by Capt. ...
 Under General Land Office ...

See original Plat in
 back of this Volume

THE STATE OF TEXAS,

Survey No. 1

DALLAM

County.

Block C. S.

ORIGINAL FIELD NOTES of a survey of 320 acres of land in DALLAM

County, Texas, made for the permanent public free school fund of the State of Texas by virtue of a final decree in the Fifty-third Judicial District Court, Travis County, Texas, dated the 26th day of April, 1924, in Cause No. 36183, wherein the State of Texas was plaintiff and George P. Findlay and others were defendants and known as the Capitol Syndicate Case. Said land having been appropriated to the permanent public free school fund and survey authorized by Chapter 106, Act of the Regular Session of the 38th Legislature, 1923, Page 222.

(For Supreme Court decision see 250 S. W. Rep., Page 651.)

Situated about 23 miles N 3° E from county seat.

Beginning at

A Concrete Monument, three feet long, set two feet in the ground, Set at the N E corner of Survey 8, Block 19, Capitol Syndicate Subdivision, as called for by the Partitioners, as the North East Corner of the land accepted by them, in their report to the Judge of the District Court, 53rd., Judicial District of Texas, for the Northeast and beginning corner of this survey,

Thence South 1900.8 varas with the line of Partition, to a steel pipe set in the ground marked " S 1" set for the S E corner of this survey

Thence West 950.4 varas to a stake set for the S W this

Thence North 1900.8 varas to a stake set under fence for the N W this

Thence East 950.4 varas, with said Partition fence

File-148963
CORRECT ON MAP FOR 320 ACRES
4-14-1942
Atlee

Patented
4-28-42
Robinson

See page 47 of Vol 5A
J.A. Hutchins for
Explanation of order

to the place of beginning.

Chain Carriers } Frank Johnson
 } Lloyd Anderson.

Surveyed May 1924.

I, James P. Dod, *was Validated by special act of the Legislature March 1925.* Licensed Land Surveyor of the State of Texas, do hereby

certify that the foregoing survey was made by me on the ground, and according to law; that the limits, boundaries and corners, with the marks, natural and artificial, are truly described in the foregoing Field Notes, just as I found them on the ground; and they are recorded in Book....., Page....., Surveyor's Records of said county.

This..... day of..... 1924. James P. Dod Licensed Land Surveyor.

OK

THE STATE OF TEXAS,

DALLAM County.

Survey No. 2

Block C. S.

ORIGINAL FIELD NOTES of a survey of 320 acres of land in DALLAM

County, Texas, made for the permanent public free school fund of the State of Texas by virtue of a final decree in the Fifty-third Judicial District Court, Travis County, Texas, dated the 26th day of April, 1924, in Cause No. 36183, wherein the State of Texas was plaintiff and George P. Findlay and others were defendants and known as the Capitol Syndicate Case. Said land having been appropriated to the permanent public free school fund and survey authorized by Chapter 106, Act of the Regular Session of the 38th Legislature, 1923, Page 222.

(For Supreme Court decision see 250 S. W. Rep., Page 651.)

Situated about 23 miles N 3° E from county seat.

Beginning at

a stake set under Partition Fence, the N W corner of survey 1, this block, for the N E corner of this survey,

Thence South 1900.8 varas to a stake set for the S W corner of said survey 1, for the S E corner of this survey,

Thence West 950.4 varas to a pipe set for the S W corner of this survey, and the S E corner of survey 3 this block, marked "S 2"

Thence North 1900.8 varas to a pipe under Partition Fence, set for the N W corner of this survey and the N E corner of survey 3 this block marked "S 3"

Thence East 950.4 varas with said Partition fence

to the place of beginning.

Chain Carriers } Frank Johnson
Lloyd Anderson

Surveyed May, 1924,

I, James P. Dod, Licensed Land Surveyor of the State of Texas, do hereby

certify that the foregoing survey was made by me on the ground, and according to law; that the limits, boundaries and corners, with the marks, natural and artificial, are truly described in the foregoing Field Notes, just as I found them on the ground; and they are recorded in Book, Page, Surveyor's Records of said county.

This day of 1924.

James P. Dod
Licensed Land Surveyor.

File 148936
CORRECT ON MAP FOR 320 ACRES
11-12-1947 - Atlee
Patented 11-14-47
Robert Sean

148936
OK.
10-30-47
J.D.

THE STATE OF TEXAS,

DALLAM

County.

Survey No. 3

Block C. S.

ORIGINAL FIELD NOTES of a survey of 320 acres of land in DALLAM

County, Texas, made for the permanent public free school fund of the State of Texas by virtue of a final decree in the Fifty-third Judicial District Court, Travis County, Texas, dated the 26th day of April, 1924, in Cause No. 36183, wherein the State of Texas was plaintiff and George P. Findlay and others were defendants and known as the Capitol Syndicate Case. Said land having been appropriated to the permanent public free school fund and survey authorized by Chapter 106, Act of the Regular Session of the 38th Legislature, 1923, Page 222.

(For Supreme Court decision see 250 S. W. Rep., Page 651.)

Situated about 23 miles North 2° E from county seat. Dalhart

Beginning at

A steel pipe under fence, set for the N E corner of this survey and the N W corner survey 2 this block, marked " S 3 ",

Thence South 1900.8 varas with the west line said survey 2, to a steel pipe set for the S W said survey 2 and marked " S 2 ", for the S E corner this survey,

Thence West 950.4 varas to a stake set for the S W corner this survey

Thence North 1900.8 varas to a stake under Partition fence, set for the N W corner this survey,

Thence East 950.4 varas with said Partition fence ,

148937
CORRECT ON MAP FOR 320 ACRES
1/16/56 VES

Returned
2-15-56
Robert Jean

to the place of beginning.

Chain Carriers

Frank Johnson

Lloyd Anderson

Surveyed May 1924.

I, James P. Dod, Licensed Land Surveyor of the State of Texas, do hereby certify that the foregoing survey was made by me on the ground, and according to law; that the limits, boundaries and corners, with the marks, natural and artificial, are truly described in the foregoing Field Notes, just as I found them on the ground; and they are recorded in Book, Page, Surveyor's Records of said county.

This day of 1924.

James P. Dod
Licensed Land Surveyor.

OK

THE STATE OF TEXAS,

DALLAM

County.

Survey No. 5

Block C. S.

ORIGINAL FIELD NOTES of a survey of 320 acres of land in DALLAM

County, Texas, made for the permanent public free school fund of the State of Texas by virtue of a final decree in the Fifty-third Judicial District Court, Travis County, Texas, dated the 26th day of April, 1924, in Cause No. 36183, wherein the State of Texas was plaintiff and George P. Findlay and others were defendants and known as the Capitol Syndicate Case. Said land having been appropriated to the permanent public free school fund and survey authorized by Chapter 106, Act of the Regular Session of the 38th Legislature, 1923, Page 222.

(For Supreme Court decision see 250 S. W. Rep., Page 651.)

Situated about 23 miles N. 2° 45' W. from county seat, Dalhart

Beginning at

A steel pipe under fence, set for the N W corner survey 4 this block and the N E corner this survey, marked " S 5 "

Thence south 1900.8 varas with the west line said survey 4, to a steel pipe set for the S W 4 and S E this survey, marked " S 4 "

Thence West 950.4 varas to a stake set for the S W corner this survey and the S E corner of survey 6,

Thence North 1900.8 varas to a syake set under Partition Fence for the N W corner this survey and the N E survey 6,

Thence East 950.4 varas

148938
CORRECT ON MAP FOR 320 ACRES
1/16/56 VES
Patented
2-15-56
Robertson

to the place of beginning.

Chain Carriers } Frank Johnson
Lloyd Anderson

Surveyed May 1924.

I, James P. Dod, Licensed Land Surveyor of the State of Texas, do hereby

certify that the foregoing survey was made by me on the ground, and according to law; that the limits, boundaries and corners, with the marks, natural and artificial, are truly described in the foregoing Field Notes, just as I found them on the ground; and they are recorded in Book _____, Page _____, Surveyor's Records of said county.

This _____ day of _____ 1924.

James P. Dod, Licensed Land Surveyor.

THE STATE OF TEXAS,

DALLAM

County.

Survey No. 6

Block C. S.

*File - OK for 316.4 Acres
4-7-41
ellie*

ORIGINAL FIELD NOTES of a survey of 316.4 acres of land in DALLAM

County, Texas, made for the permanent public free school fund of the State of Texas by virtue of a final decree in the Fifty-third Judicial District Court, Travis County, Texas, dated the 26th day of April, 1924, in Cause No. 36183, wherein the State of Texas was plaintiff and George P. Findlay and others were defendants and known as the Capitol Syndicate Case. Said land having been appropriated to the permanent public free school fund and survey authorized by Chapter 106, Act of the Regular Session of the 38th Legislature, 1923, Page 222.

(For Supreme Court decision see 250 S. W. Rep., Page 651.)

Situated about 23 miles N 2°45'W from county seat.

Beginning at

a stake ~~xxx~~ under fence set for the N W corner of survey 5 this block and the N E corner of this survey,

Thence South 1900.8 varas to a stake set for the S W corner said survey 5 and the S E corner of this survey, for the S E corner this

Thence West 939.6 varas to a steel pipe set for the S W corner of this survey marked " S 6" , on the east line of the Dalhart to Boise City, lane, for the S W this survey,

Thence North 1900.8 varas with the east line of said lane, to a Concrete Monument 3 feet long, set 2 feet in the ground, under the Partition fence and the Lane fence, for the N W corner of this survey,

Thence East 939.6 varas with said Partition fence

to the place of beginning.

Chain Carriers

Frank Johnson

Lloyd Anderson

Surveyed May 1924.

I, James P. Dod, Licensed Land Surveyor of the State of Texas, do hereby

certify that the foregoing survey was made by me on the ground, and according to law; that the limits, boundaries and corners, with the marks, natural and artificial, are truly described in the foregoing Field Notes, just as I found them on the ground; and they are recorded in Book....., Page....., Surveyor's Records of said county.

This..... day of..... 1924.

James P. Dod

Licensed Land Surveyor.

OK

*File - 148939
CORRECT ON MAP FOR 316.4 ACRES
1-27-47 HSK
Patented
1-29-47
Johnson*

THE STATE OF TEXAS,
DALLAM County.

Survey No. 7
Block C. S.

ORIGINAL FIELD NOTES of a survey of 316.4 acres of land in DALLAM

County, Texas, made for the permanent public free school fund of the State of Texas by virtue of a final decree in the Fifty-third Judicial District Court, Travis County, Texas, dated the 26th day of April, 1924, in Cause No. 36183, wherein the State of Texas was plaintiff and George P. Findlay and others were defendants and known as the Capitol Syndicate Case. Said land having been appropriated to the permanent public free school fund and survey authorized by Chapter 106, Act of the Regular Session of the 38th Legislature, 1923, Page 222.

(For Supreme Court decision see 250 S. W. Rep., Page 651.)

Situated about 23 miles N 5°W from county seat.

Beginning at

A Concrete Monument, 3 feet long, set 2 feet in the ground, under the Partition fence and the fence along the west side of the Dalhart to Boise City, Lane, said monument is west 21.6 varas from the Concrete Monument set on the east side of the lane for the N W corner of survey 6, this block

Thence South 1900.8 varas to a steel pipe set for the S E corner of this survey and marked "S 7", on the west side of the Dalhart to Boise City Lane, from which pipe, a steel pipe set for ~~marked~~ the S W corner of survey 6, and marked "S 6" bears East 21.6 varas,

Thence West 939.6 varas to a stake set for the S W corner of this survey and the S E corner of survey 8 this block, for S W this

Thence North 1900.8 varas to a stake set under the Partition Fence for the N W corner this survey and the N E corner of Survey 8,

Thence East 939.6 varas with said Partition Fence

to the place of beginning.

Chain Carriers } Frank Johnson
 } Lloyd Anderson.

Surveyed May 1924.

I, James P. Dod *By special act of the Legislature March 1925.* Licensed Land Surveyor of the State of Texas, do hereby certify that the foregoing survey was made by me on the ground, and according to law; that the limits, boundaries and corners, with the marks, natural and artificial, are truly described in the foregoing Field Notes, just as I found them on the ground; and they are recorded in Book _____, Page _____, Surveyor's Records of said county.

This _____ day of _____ 1924.

James P. Dod
Licensed Land Surveyor.

LAND OFFICE

OK

THE STATE OF TEXAS,

Survey No. 8

DALLAM County.

Block C. S.

ORIGINAL FIELD NOTES of a survey of 320 acres of land in DALLAM

County, Texas, made for the permanent public free school fund of the State of Texas by virtue of a final decree in the Fifty-third Judicial District Court, Travis County, Texas, dated the 26th day of April, 1924, in Cause No. 36183, weherin the State of Texas was plaintiff and George P. Findlay and others were defendants and known as the Capitol Syndicate Case. Said land having been appropriated to the permanent public free school fund and survey authorized by Chapter 106, Act of the Regular Session of the 38th Legislature, 1923, Page 222.

(For Supreme Court decision see 250 S. W. Rep., Page 651.)

Situated about 23 miles N 54 W from county seat.

Beginning at

a stake under Partition Fence set for the N W corner of survey 7 this block and the N E this survey

Thence South 1900.8 varas to a stake set for the S W corner of said survey 7, for the S E corner this survey

Thence West 950.4 varas to a steel pipe, set for the S W corner of this survey, and the S E corner of survey 9 this block, marked "S 8",

Thence North 1900.8 varas to a pipe set under Partition Fence, set for the N W corner of this survey and the N E corner of survey 9, marked "S 9"

Thence East 950.4 varas with said Partition Fence

148916
CORRECT ON MAP FOR 320 ACRES
7/14/50 VES
Patented
7-19-50
Johnson

to the place of beginning.

Chain Carriers } Frank Johnson
Lloyd Anderson

Surveyed May 1924.

By special act of the Legislature March 1925

I, James P. Dod, Licensed Land Surveyor of the State of Texas, do hereby

certify that the foregoing survey was made by me on the ground, and according to law; that the limits, boundaries and corners, with the marks, natural and artificial, are truly described in the foregoing Field Notes, just as I found them on the ground; and they are recorded in Book....., Page....., Surveyor's Records of said county.

This.....day of.....1924.

James P. Dod
Licensed Land Surveyor.

OK

THE STATE OF TEXAS,

9

Survey No.

DALLAM County.

Block C. S.

ORIGINAL FIELD NOTES of a survey of 320 acres of land in DALLAM

County, Texas, made for the permanent public free school fund of the State of Texas by virtue of a final decree in the Fifty-third Judicial District Court, Travis County, Texas, dated the 26th day of April, 1924, in Cause No. 36183, wherein the State of Texas was plaintiff and George P. Findlay and others were defendants and known as the Capitol Syndicate Case. Said land having been appropriated to the permanent public free school fund and survey authorized by Chapter 106, Act of the Regular Session of the 38th Legislature, 1923, Page 222.

(For Supreme Court decision see 250 S. W. Rep., Page 651.)

Situated about 22.5 miles N 7°30'W from county seat.

Beginning at

a ~~xxx~~ pipe under the Partition Fence, set for the N W corner of survey 8, and the N E corner of this survey, marked " S 9",

Thence South 1900.8 varas to a steel pipe set for the S W corner of Survey 8 this Block and the S E corner of this survey marked " S 8"

Thence West 950.4 varas to a stake set for the S W corner of this survey and the S E corner of survey 10,

Thence North 1900.8 varas to a stake under Partition Fence set for the N W corner this survey and the N E corner of survey 10,

Thence East ^{950.4 varas} with said Partition Fence

to the place of beginning.

Chain Carriers

Frank Johnson

Lloyd Anderson

Surveyed May 1924.

I, James P. Dod, ^{By special act of the Legislature March 1925} Licensed Land Surveyor of the State of Texas, do hereby certify that the foregoing survey was made by me on the ground, and according to law; that the limits, boundaries and corners, with the marks, natural and artificial, are truly described in the foregoing Field Notes, just as I found them on the ground; and they are recorded in Book....., Page....., Surveyor's Records of said county.

This..... day of..... 1924.

James P. Dod

Licensed Land Surveyor.

OK

THE STATE OF TEXAS,

DALLAM County.

Survey No. 10

Block C. S.

ORIGINAL FIELD NOTES of a survey of 320 acres of land in DALLAM

County, Texas, made for the permanent public free school fund of the State of Texas by virtue of a final decree in the Fifty-third Judicial District Court, Travis County, Texas, dated the 26th day of April, 1924, in Cause No. 36183, wherein the State of Texas was plaintiff and George P. Findlay and others were defendants and known as the Capitol Syndicate Case. Said land having been appropriated to the permanent public free school fund and survey authorized by Chapter 106, Act of the Regular Session of the 38th Legislature, 1923, Page 222.

(For Supreme Court decision see 250 S. W. Rep., Page 651.)

Situated about 23.5 miles N 7°30'W from county seat.

Beginning at

A stake under fence set for the N W corner of survey 9, and the N E corner of this survey,

Thence South 1900.8 varas to a stake set for the S W corner of survey 9 this block, and the S E corner of this survey,

Thence West 950.4 varas to a pipe set for the S W corner of this survey and the S E corner of survey 11 this block, marked "S 10",

Thence North 1900.8 varas to a pipe under Partition fence, set for the N W corner of this survey and the N E corner of 11, marked "S 11"

Thence East 950.4 varas with said Partition Fence

F-148952
CORRECT ON MAP FOR 320 ACRES
11-1-46
Patented
11-4-46
Repealed
9-22-47
Robertson

to the place of beginning.

Frank Johnson

Chain Carriers

Lloyd Anderson

Surveyed May 1924.

I, *James P. Dod* *By special act of the Legislature March 1925.*, Licensed Land Surveyor of the State of Texas, do hereby

certify that the foregoing survey was made by me on the ground, and according to law; that the limits, boundaries and corners, with the marks, natural and artificial, are truly described in the foregoing Field Notes, just as I found them on the ground; and they are recorded in Book....., Page....., Surveyor's Records of said county.

James P. Dod

Licensed Land Surveyor.

This..... day of..... 1924.

OK

THE STATE OF TEXAS,

Survey No. 11

DALLAM County.

Block C. S.

ORIGINAL FIELD NOTES of a survey of 320 acres of land in DALLAM

County, Texas, made for the permanent public free school fund of the State of Texas by virtue of a final decree in the Fifty-third Judicial District Court, Travis County, Texas, dated the 26th day of April, 1924, in Cause No. 36183, wherein the State of Texas was plaintiff and George P. Findlay and others were defendants and known as the Capitol Syndicate Case. Said land having been appropriated to the permanent public free school fund and survey authorized by Chapter 106, Act of the Regular Session of the 38th Legislature, 1923, Page 222.

(For Supreme Court decision see 250 S. W. Rep., Page 651.)

Situated about 23.5 miles N 12°15'W from county seat.

Beginning at

a pipe under fence set for the N W corner of survey 10 this block and the N E corner of this survey, marked "B 11"

Thence South 1900.8 varas to a pipe set for the S W corner of survey 10 this Block, and the S E corner of this survey, marked "S 10"

Thence West 950.4 varas to a stake set for the S W corner of this survey and the S E corner of survey 12 this block,

under Partition Fence

Thence North 1900.8 varas to a stake set for the N W corner of this survey and the N E corner of said survey 12,

Thence East 950.4 varas with said Partition Fence,

F-148988
CORRECT ON MAP FOR 320 ACRES
11-1-46
Patman
Robinson
Repeats 9-2-47
Robinson

to the place of beginning.

Chain Carriers } Frank Johnson
Lloyd Anderson

Surveyed May 1924.

I, James P. Dod, Licensed Land Surveyor of the State of Texas, do hereby

certify that the foregoing survey was made by me on the ground, and according to law; that the limits, boundaries and corners, with the marks, natural and artificial, are truly described in the foregoing Field Notes, just as I found them on the ground; and they are recorded in Book _____, Page _____, Surveyor's Records of said county.

This _____ day of _____ 1924.

James P. Dod
Licensed Land Surveyor.

OK

THE STATE OF TEXAS,

12

12

DALLAM County.

Survey No.

Block C. S.

ORIGINAL FIELD NOTES of a survey of 320 acres of land in DALLAM

County, Texas, made for the permanent public free school fund of the State of Texas by virtue of a final decree in the Fifty-third Judicial District Court, Travis County, Texas, dated the 26th day of April, 1924, in Cause No. 36183, weherin the State of Texas was plaintiff and George P. Findlay and others were defendants and known as the Capitol Syndicate Case. Said land having been appropriated to the permanent public free school fund and survey authorized by Chapter 106, Act of the Regular Session of the 38th Legislature, 1923, Page 222.

(For Supreme Court decision see 250 S. W. Rep., Page 651.)

Situated about 23.5 miles N 12° 15' W from county seat.

Beginning at

a stake set under fence for the N W corner of survey 11 this block and the N E corner of this survey,

Thence South 1900.8 varas to a stake set for the S W corner of said survey 11 this block and the S E corner of this survey,

Thence West 950.4 varas to a pipe set for the S W corner of this survey and the S E corner of survey 13 this block, marked "S 12,"

Thence North 1900.8 varas to a pipe under Partition Fence set for the N W corner of this survey and the N E corner of said survey 13, marked "S 13 "

950.4 varas

Thence East with said Parfition Fence

^

to the place of beginning.

F-148987
CORRECT ON MAP FOR 320 ACRES
12-26-1941 Attk-

Valentine
12-26-41
Robertson

OK for 320 Acres
12-13-41
HWR

Chain Carriers

Frank Johnson

Lloyd Anderson.

Surveyed May 1924.

I, James P. Dod, Licensed Land Surveyor of the State of Texas,

By special act of the Legislature March 1925

do hereby certify that the foregoing survey was made by me on the ground, and according to law; that the limits, boundaries and corners, with the marks, natural and artificial, are truly described in the foregoing Field Notes, just as I found them on the ground; and they are recorded in Book _____, Page _____, Surveyor's Records of said county.

James P. Dod

Licensed Land Surveyor.

This _____ day of _____ 1924.

OK

THE STATE OF TEXAS,

DALLAM

County.

Survey No. 13

Block C. S.

ORIGINAL FIELD NOTES of a survey of 320 acres of land in DALLAM

County, Texas, made for the permanent public free school fund of the State of Texas by virtue of a final decree in the Fifty-third Judicial District Court, Travis County, Texas, dated the 26th day of April, 1924, in Cause No. 36183, wherein the State of Texas was plaintiff and George P. Findlay and others were defendants and known as the Capitol Syndicate Case. Said land having been appropriated to the permanent public free school fund and survey authorized by Chapter 106, Act of the Regular Session of the 38th Legislature, 1923, Page 222.

(For Supreme Court decision see 250 S. W. Rep., Page 651.)

Situated about 24 miles N 14° 30' W from county seat.

Beginning at

a pipe ~~set~~ under fence set for the N W corner of Survey 12 this block and the N E corner of this survey, marked " S 13 ",

Thence South 1900.8 varas to a pipe set for the S W corner of said survey 12, and the S E corner of this survey, marked " S 12 "

Thence West 950.4 varas to a stake set for the S W corner of this survey and the S E corner of survey 14 this block,

Thence North 1900.8 varas to a stake under the Partition Fence, set for the N W corner of this survey and the N E corner of said survey 14, marked " S 14 ",

Thence East ~~with~~ 950.4 varas with said Partition Fence,

to the place of beginning.

Chain Carriers } Frank Johnson
Lloyd Anderson

Surveyed May 1924.

By special act of the Legislature March 1925.

I, James P. Dod, Licensed Land Surveyor of the State of Texas, do hereby

certify that the foregoing survey was made by me on the ground, and according to law; that the limits, boundaries and corners, with the marks, natural and artificial, are truly described in the foregoing Field Notes, just as I found them on the ground; and they are recorded in Book _____, Page _____, Surveyor's Records of said county.

This _____ day of _____ 1924.

James P. Dod
Licensed Land Surveyor.

OK

THE STATE OF TEXAS,

14

Survey No.

DALLAM

County.

Block C. S.

ORIGINAL FIELD NOTES of a survey of 320 acres of land in DALLAM

County, Texas, made for the permanent public free school fund of the State of Texas by virtue of a final decree in the Fifty-third Judicial District Court, Travis County, Texas, dated the 26th day of April, 1924, in Cause No. 36183, wherein the State of Texas was plaintiff and George P. Findlay and others were defendants and known as the Capitol Syndicate Case. Said land having been appropriated to the permanent public free school fund and survey authorized by Chapter 106, Act of the Regular Session of the 38th Legislature, 1923, Page 222.

(For Supreme Court decision see 250 S. W. Rep., Page 651.)

Situated about 24 miles N 14° 30' W from county seat.

Beginning at

a stake under fence, set for the N W corner of Survey 13 this block and the N E corner of this survey,

Thence South 1900.8 varas to a stake set for the S W corner of Survey 13 this block and the S E corner of this survey

Thence West 950.4 varas to a pipe set for the S W corner of this survey and the S E corner of Survey 15 this block, marked "S 14",

Thence North 1900.8 varas to a pipe under the Partition Fence, set for the N W corner of this survey and the N E corner of Survey 15 this block, marked "S 15"

Thence East 950.4 varas with said Partition Fence,

to the place of beginning.

Chain Carriers

Frank Johnson

Lloyd Anderson.

Surveyed May 1924.

By special act of the Legislature March 1925.

I, James P. Dod, Licensed Land Surveyor of the State of Texas, do hereby

certify that the foregoing survey was made by me on the ground, and according to law; that the limits, boundaries and corners, with the marks, natural and artificial, are truly described in the foregoing Field Notes, just as I found them on the ground; and they are recorded in Book, Page, Surveyor's Records of said county.

This day of 1924.

James P. Dod

Licensed Land Surveyor.

07c

148941
CORRECT ON MAP FOR 320 ACRES
4/16/51 VES

Patented
4-18-51
Robertson

THE STATE OF TEXAS,

DALLAM

County.

Survey No. 15

Block C. S.

ORIGINAL FIELD NOTES of a survey of 320 acres of land in DALLAM

County, Texas, made for the permanent public free school fund of the State of Texas by virtue of a final decree in the Fifty-third Judicial District Court, Travis County, Texas, dated the 26th day of April, 1924, in Cause No. 36183, wherein the State of Texas was plaintiff and George P. Findlay and others were defendants and known as the Capitol Syndicate Case. Said land having been appropriated to the permanent public free school fund and survey authorized by Chapter 106, Act of the Regular Session of the 38th Legislature, 1923, Page 222.

(For Supreme Court decision see 250 S. W. Rep., Page 651.)

Situated about 24 miles N 15° W from county seat.

Beginning at

a pipe set under fence set for the N W corner of survey 14 this block and the N E corner of this Survey, marked " S 15 "

Thence South 1900.8 varas to a pipe set for the S W corner of said survey 14 and the S E corner of this survey, marked " S 14 "

Thence West 950.4 varas to a stake set for the S W corner of this survey and the S E corner of survey 18 this block,

Thence North 1900.8 varas to a stake under Partition Fence, set for the N W corner of this survey and the N E corner of said survey 16

Thence East 950.4 varas with said Partition Fence

to the place of beginning.

Chain Carriers } Frank Johnson
Lloyd Anderson

Surveyed May 1924.

I, James P. Dod, Licensed Land Surveyor of the State of Texas, do hereby certify that the foregoing survey was made by me on the ground, and according to law; that the limits, boundaries and corners, with the marks, natural and artificial, are truly described in the foregoing Field Notes, just as I found them on the ground; and they are recorded in Book _____, Page _____, Surveyor's Records of said county.

This _____ day of _____ 1924.

James P. Dod
Licensed Land Surveyor.

148942
CORRECT ON MAP FOR 320 ACRES
4/16/51 VES
Patented
4-18-51
Robertson

OK

THE STATE OF TEXAS,

DALLAM

County.

Survey No. 16

Block C. S.

ORIGINAL FIELD NOTES of a survey of 320 acres of land in DALLAM

County, Texas, made for the permanent public free school fund of the State of Texas by virtue of a final decree in the Fifty-third Judicial District Court, Travis County, Texas, dated the 26th day of April, 1924, in Cause No. 36183, wherein the State of Texas was plaintiff and George P. Findlay and others were defendants and known as the Capitol Syndicate Case. Said land having been appropriated to the permanent public free school fund and survey authorized by Chapter 106, Act of the Regular Session of the 38th Legislature, 1923, Page 222.

(For Supreme Court decision see 250 S. W. Rep., Page 651.)

Situated about 24 miles N 15° W from county seat.

Beginning at

a stake under fence set for the N W corner of survey 15 this block and the N E corner of this survey

Thence South 1900.8 varas to a stake set for the S W corner of said survey 15 and the S E corner of this survey,

Thence West 950.4 varas to a pipe ~~set~~ under fence set for the S W corner of this survey and the N W corner of survey 17 this block, marked, " S 16 ",

1900.8 varas

Thence North with said fence to a Concrete Monument set at fence corner, at the N W corner of the land allotted the State by the Court Partitioners, being the N W corner of Survey 1, Block 19, of the Capitol Syndicate Subdivision, as called for in their report to the District Judge, 53rd., Judicial District of Texas, for the N W corner of this survey,

Thence East 950.4 varas with Partition Fence

CORRECT ON MAP FOR 320 ACRES 1-12-40
File 148986
J.B. Giles
White Commr.
File Clerk
1-12-40
Patented Robertson
Repatented 1-25-40
Anderson

to the place of beginning.

Chain Carriers } Frank Johnson
Lloyd Anderson.

Surveyed May 1924.

By special act of the Legislature March 1925.

I, James P. Dod, Licensed Land Surveyor of the State of Texas, do hereby

certify that the foregoing survey was made by me on the ground, and according to law; that the limits, boundaries and corners, with the marks, natural and artificial, are truly described in the foregoing Field Notes, just as I found them on the ground; and they are recorded in Book _____, Page _____, Surveyor's Records of said county.

James P. Dod
Licensed Land Surveyor.

This _____ day of _____ 1924.

OK

THE STATE OF TEXAS,

Survey No. 17

DALLAM County.

Block C. S.

ORIGINAL FIELD NOTES of a survey of 319.3 acres of land in DALLAM

County, Texas, made for the permanent public free school fund of the State of Texas by virtue of a final decree in the Fifty-third Judicial District Court, Travis County, Texas, dated the 26th day of April, 1924, in Cause No. 36183, wherein the State of Texas was plaintiff and George P. Findlay and others were defendants and known as the Capitol Syndicate Case. Said land having been appropriated to the permanent public free school fund and survey authorized by Chapter 106, Act of the Regular Session of the 38th Legislature, 1923, Page 222.

(For Supreme Court decision see 250 S. W. Rep., Page 651.)

Situated about 23 miles N 15° 30' W from county seat.

Beginning at

a pipe set for the S W corner of survey 16 this block and the N W corner of this survey, marked "S 16" and set under a fence on Partition Line,

Thence East 950.4 varas to a stake set for the S W corner of survey 15 this block, for the N E corner of this survey,

Thence South 1900.8 varas to a stake set for the S E corner of this survey and the S W corner of survey 18 this block,

Thence West 946.5 varas to a pipe set under fence on line of partition, for the S W corner of this survey and the N W corner of survey 48 this block, marked "S 17",

Thence N 0° 08' W 1900.8 varas

to the place of beginning.

Chain Carriers } Frank Johnson
Lloyd Anderson

Surveyed May 1924.

I, James P. Dod, Licensed Land Surveyor of the State of Texas, do hereby

certify that the foregoing survey was made by me on the ground, and according to law; that the limits, boundaries and corners, with the marks, natural and artificial, are truly described in the foregoing Field Notes, just as I found them on the ground; and they are recorded in Book, Page, Surveyor's Records of said county.

This day of 1924.

James P. Dod
Licensed Land Surveyor.

OK

THE STATE OF TEXAS,

DALLAM County.

Survey No. 18

Block C. S.

ORIGINAL FIELD NOTES of a survey of 320 acres of land in DALLAM

County, Texas, made for the permanent public free school fund of the State of Texas by virtue of a final decree in the Fifty-third Judicial District Court, Travis County, Texas, dated the 26th day of April, 1924, in Cause No. 36183, wherein the State of Texas was plaintiff and George P. Findlay and others were defendants and known as the Capitol Syndicate Case. Said land having been appropriated to the permanent public free school fund and survey authorized by Chapter 106, Act of the Regular Session of the 38th Legislature, 1923, Page 222.

(For Supreme Court decision see 250 S. W. Rep., Page 651.)

Situated about 23 miles N 15° 30' W from county seat.

Beginning at

a stake set for the S W corner of survey 15 this block, also the S E corner of survey 16, and NE corner of Survey 17, for the N W corner of this survey,

Thence East 950.4 varas to a pipe set for the S W corner of survey 14 this block for the N E corner of this survey, *with S 14*

Thence South 1900.8 varas to a steel pipe set for the S E corner of this survey and the S W corner of survey 19 this block, marked "S 18"

Thence West 950.4 varas to a stake set for the S E corner of survey 17 this block and the S W corner of this survey,

Thence North 1900.8 varas

to the place of beginning.

Chain Carriers } Frank Johnson
Lloyd Anderson

Surveyed May 1924.

By special act of the Legislature March 1925.

I, James P. Dod, Licensed Land Surveyor of the State of Texas, do hereby

certify that the foregoing survey was made by me on the ground, and according to law; that the limits, boundaries and corners, with the marks, natural and artificial, are truly described in the foregoing Field Notes, just as I found them on the ground; and they are recorded in Book....., Page....., Surveyor's Records of said county.

This day of 1924.

James P. Dod
Licensed Land Surveyor.

OK

THE STATE OF TEXAS,

Survey No. 19

DALLAM County.

Block C. S.

ORIGINAL FIELD NOTES of a survey of 320 acres of land in DALLAM

County, Texas, made for the permanent public free school fund of the State of Texas by virtue of a final decree in the Fifty-third Judicial District Court, Travis County, Texas, dated the 26th day of April, 1924, in Cause No. 36183, wherein the State of Texas was plaintiff and George P. Findlay and others were defendants and known as the Capitol Syndicate Case. Said land having been appropriated to the permanent public free school fund and survey authorized by Chapter 106, Act of the Regular Session of the 38th Legislature, 1923, Page 222.

(For Supreme Court decision see 250 S. W. Rep., Page 651.)

Situated about 23 miles N 14°45'W from county seat.

Beginning at

~~Thence~~ a pipe set for the S W corner of survey 14 this block, Marked "S 14"

Thence East 950.4 varas to a stake set for the S W corner of survey 13 this block for the N E corner of this survey

Thence South 1900.8 varas to a stake set for the S E corner of this survey and the S W corner of survey 20 this block,

Thence West 950.4 varas to a pipe set for the S E corner of survey 18 this block and the S W corner of this survey marked "S 18",

Thence North 1900.8

F-148950
CORRECT ON MAP FOR 320 ACRES
11-1-46
Patented 11-4-46
Robert Fear

OC

to the place of beginning.

Chain Carriers

Frank Johnson

Lloyd Anderson

Surveyed May 1924.

I, *James P. Dod*, Licensed Land Surveyor of the State of Texas, do hereby

By special act of the Legislature March 1925.

certify that the foregoing survey was made by me on the ground, and according to law; that the limits, boundaries and corners, with the marks, natural and artificial, are truly described in the foregoing Field Notes, just as I found them on the ground; and they are recorded in Book....., Page....., Surveyor's Records of said county.

James P. Dod

This..... day of..... 1924.

Licensed Land Surveyor.

OC

THE STATE OF TEXAS,

DALLAM

County.

Survey No. 20

Block C. S.

ORIGINAL FIELD NOTES of a survey of 320 acres of land in DALLAM

County, Texas, made for the permanent public free school fund of the State of Texas by virtue of a final decree in the Fifty-third Judicial District Court, Travis County, Texas, dated the 26th day of April, 1924, in Cause No. 36183, wherein the State of Texas was plaintiff and George P. Findlay and others were defendants and known as the Capitol Syndicate Case. Said land having been appropriated to the permanent public free school fund and survey authorized by Chapter 106, Act of the Regular Session of the 38th Legislature, 1923, Page 222.

(For Supreme Court decision see 250 S. W. Rep., Page 651.)

Situated about 23 miles N 14°45'W from county seat.

Beginning at

A stake set for the S W corner of Survey 13 this block,

Thence East 950.4 varas to a pipe set for the S W corner of survey 12 this block, for the N E corner of this survey

Thence South 1900.8 varas to a pipe set for the S E corner of this Survey and the S W corner of survey 21 this block, marked "S 20"

Thence West 950.4 varas to a stake set for the S E corner of survey 19 this block and the S W corner of this survey,

Thence North 1900.8 varas

F-148951
CORRECT ON MAP FOR 320 ACRES
11-1-46
Calvin
11-4-46
Robert Jean
Repaired
9-22-47
Robert Jean

to the place of beginning.

Chain Carriers } Frank Johnson
Lloyd Anderson.

Surveyed May 1924.

By special act of the Legislature March 1925.

I, *James P. Dod*, Licensed Land Surveyor of the State of Texas, do hereby

certify that the foregoing survey was made by me on the ground, and according to law; that the limits, boundaries and corners, with the marks, natural and artificial, are truly described in the foregoing Field Notes, just as I found them on the ground; and they are recorded in Book _____, Page _____, Surveyor's Records of said county.

This _____ day of _____ 1924.

James P. Dod
Licensed Land Surveyor.

THE STATE OF TEXAS,

Survey No. 21

DALLAM County.

Block C. S.

*O.K. for 320ac.
7-20-40 French*

ORIGINAL FIELD NOTES of a survey of 320 acres of land in DALLAM

County, Texas, made for the permanent public free school fund of the State of Texas by virtue of a final decree in the Fifty-third Judicial District Court, Travis County, Texas, dated the 26th day of April, 1924, in Cause No. 36183, wherein the State of Texas was plaintiff and George P. Findlay and others were defendants and known as the Capitol Syndicate Case. Said land having been appropriated to the permanent public free school fund and survey authorized by Chapter 106, Act of the Regular Session of the 38th Legislature, 1923, Page 222.

(For Supreme Court decision see 250 S. W. Rep., Page 651.)

Situated about 23 miles N 12° 30' W from county seat.

Beginning at

a pipe set for the S W corner survey 12 this block, marked "S 12", for the N W corner of this survey, from which a windmill bears S 42° 07' E 428 varas,

Thence East 950.4 varas to a stake set for the S W corner of survey 11 this block, for the N E corner of this survey,

Thence South 1900.8 varas to a stake set for the S E corner of this survey and the S W corner of Survey 22 this block,

Thence West 950.4 varas to a pipe set for the S E corner of survey 20 this block, marked "S 20", for the S W corner of this survey,

Thence North 1900.8 varas,

*Patented
2-2-40
C. Johnson*

to the place of beginning.

Chain Carriers } Frank Johnson
 } Lloyd Anderson

Surveyed May 1924.

I, *James P. Dod* By special act of the Legislature March 1925
Licensed Land Surveyor of the State of Texas, do hereby

certify that the foregoing survey was made by me on the ground, and according to law; that the limits, boundaries and corners, with the marks, natural and artificial, are truly described in the foregoing Field Notes, just as I found them on the ground; and they are recorded in Book....., Page....., Surveyor's Records of said county.

James P. Dod
Licensed Land Surveyor.

This day of 1924.

57c

ORIGINAL FIELD NOTES of a survey of land in DALLAS

County, Texas, made for the settlement public land school fund of the State of Texas by virtue of a final decree in the Fifth Civil District Court, Tarrant County, Texas, dated the 28th day of April, 1911, in favor of the State of Texas, wherein the State of Texas was plaintiff and George F. French and others were defendants and known as the typical syndicate case. Said land having been segregated to the permanent public free school fund and survey authorized by Chapter 100, Act of the Regular Session of the 35th Legislature, this case was

initiated about 1850 by John M. ...

initiated about 1850 by John M. ...

Payment at

a pipe set for the S W corner survey 10 this block, marked "B 1", the S W corner of this survey, from which a windmill bears S 40° 00' W 400 yards,

thence East 90° 00' 00" to a stake set for the S W corner of survey 11 this block, bearing N 2° 00' 00" E 100 yards,

thence South 100° 00' 00" to a stake set for the S E corner of this survey and the S W corner of survey 12 this block,

thence East 90° 00' 00" to a pipe set for the S E corner of survey 13 this block, marked "B 2", for the S W corner of this survey,

thence North 100° 00' 00" to a stake,

Correct on map for 320 acres

7-20-40 F.

CORRECT ON MAP FOR 320⁰ ACRES
7-20-40
F.

Approved..... 19.....
Commissioner.

.....
Bascom Giles
Commissioner.
French
Clerk.

Filed..... 19.....

LAND OFFICE
F-148910
FIELD NOTES

THE STATE OF TEXAS,

DALLAM County.

Survey No. 22

Block C. S.

*OK for 320 ac.
1-20-40 French*

ORIGINAL FIELD NOTES of a survey of 320 acres of land in DALLAM

County, Texas, made for the permanent public free school fund of the State of Texas by virtue of a final decree in the Fifty-third Judicial District Court, Travis County, Texas, dated the 26th day of April, 1924, in Cause No. 36183, wherein the State of Texas was plaintiff and George P. Findlay and others were defendants and known as the Capitol Syndicate Case. Said land having been appropriated to the permanent public free school fund and survey authorized by Chapter 106, Act of the Regular Session of the 38th Legislature, 1923, Page 222.

(For Supreme Court decision see 250 S. W. Rep., Page 651.)

Situated about 23 miles N 12° 30' W from county seat.

Beginning at

a stake set for the S W corner of survey 11 this block for the N E W corner of this survey

Thence East 950.4 varas to a pipe set for the S W corner of survey 10 this block, marked " S 10" for the N E corner of this survey,

Thence South 1900.8 varas to a pipe set for the S E corner of this survey and the S W corner of Survey 23 this block, marked "S 22"

Thence West 950.4 varas to a stake set for the S E corner of survey 21 this block and the S W corner of this survey,

Thence North 1900.8 varas

to the place of beginning.

*Valued to 7-22-40
Robertson*

Frank Johnson

Chain Carriers

Lloyd Anderson

Surveyed May 1924.

I, James P. Dod, *By special act of the Legislature March 1925.* Licensed Land Surveyor of the State of Texas, do hereby

certify that the foregoing survey was made by me on the ground, and according to law; that the limits, boundaries and corners, with the marks, natural and artificial, are truly described in the foregoing Field Notes, just as I found them on the ground; and they are recorded in Book _____, Page _____, Surveyor's Records of said county.

This _____ day of _____ 1924.

James P. Dod
Licensed Land Surveyor.

OK

LAND OFFICE
F-148911
FIELD NOTES

Filed..... 19.....

Bascom Giles
Commissioner.

French
Clerk.

Approved..... 19.....

Commissioner.

CORRECT ON MAP FOR 320 ACRES
7-20-40
F.

© 7-20-40 F.

THE STATE OF TEXAS
COUNTY OF ...
ORIGINAL FIELD NOTES of a survey of ...
County, Texas, made for the permanent public land survey of the State of Texas by virtue of a joint order
in the Fifth Judicial District Court, Texas County, Texas, dated the 20th day of April, 1891, in which
the State of Texas was plaintiff and George F. French and others were defendants and
known as the Capital Synthesis Case. Said land having been reported to the permanent public land survey
and survey authorized by Chapter 108, Act of the Second Session of the 35th Legislature, 1891, Texas
(Not separate Court decision see 225 N. W. Rep. 451.)
Estimated about 320 acres. E. 1/4 Sec. 20, T. 20 N., R. 40 W., county seat.
Beginning at
a stake set for the S. W. corner of survey II this block for the N. E.
corner of this survey
thence East 250.4 yards to a pipe set for the S. W. corner of survey
in this block, marked "A 10" for the N. E. corner of this survey,
thence South 1900.8 yards to a pipe set for the S. E. corner of this
survey and the S. E. corner of survey 28 this block, marked "B 24",
thence East 250.4 yards to a stake set for the S. E. corner of survey
in this block and the S. W. corner of this survey,
thence North 1900.8 yards

THE STATE OF TEXAS,

Survey No. 23

DALLAM County.

Block C. S.

ORIGINAL FIELD NOTES of a survey of 320 acres of land in DALLAM

County, Texas, made for the permanent public free school fund of the State of Texas by virtue of a final decree in the Fifty-third Judicial District Court, Travis County, Texas, dated the 26th day of April, 1924, in Cause No. 36183, wherein the State of Texas was plaintiff and George P. Findlay and others were defendants and known as the Capitol Syndicate Case. Said land having been appropriated to the permanent public free school fund and survey authorized by Chapter 106, Act of the Regular Session of the 38th Legislature, 1923, Page 222.

(For Supreme Court decision see 250 S. W. Rep., Page 651.)

Situated about 22.5 miles N 7° W from county seat.

Beginning at

a pipe set for the S W corner of survey 10, this block, marked "S 10" for the N W corner of this survey,

Thence East 950.4 varas to a stake set for the S W corner of survey 9 this block for the N E corner of this survey

Thence South 1900.8 varas to a stake set for the S E corner of this survey and the S W corner of survey 24 this block,

Thence West 950.4 varas to a pipe set for the S E corner of survey 22 this block and the S W corner of this survey, marked "S 22"

Thence North 1900.8 varas

to the place of beginning.

Chain Carriers } Frank Johnson
Lloyd Anderson

Surveyed May 1924.

By special act of the Legislature March 1925.

I, James P. Dod, Licensed Land Surveyor of the State of Texas, do hereby certify that the foregoing survey was made by me on the ground, and according to law; that the limits, boundaries and corners, with the marks, natural and artificial, are truly described in the foregoing Field Notes, just as I found them on the ground; and they are recorded in Book, Page, Surveyor's Records of said county.

This day of 1924.

James P. Dod Licensed Land Surveyor.

Handwritten initials

THE STATE OF TEXAS,

DALLAM County.

Survey No. 24

Block C. S.

ORIGINAL FIELD NOTES of a survey of 320 acres of land in DALLAM

County, Texas, made for the permanent public free school fund of the State of Texas by virtue of a final decree in the Fifty-third Judicial District Court, Travis County, Texas, dated the 26th day of April, 1924, in Cause No. 36183, wherein the State of Texas was plaintiff and George P. Findlay and others were defendants and known as the Capitol Syndicate Case. Said land having been appropriated to the permanent public free school fund and survey authorized by Chapter 106, Act of the Regular Session of the 38th Legislature, 1923, Page 222.

(For Supreme Court decision see 250 S. W. Rep., Page 651.)

Situated about 22.5 miles N 7° W from county seat.

Beginning at

a stake set for the S W corner of survey 9 this block, for the N W corner of this survey

Thence East 950.4 varas to a pipe set for the S W corner of survey 8 this block, marked "S 8", for the N E corner of this survey,

Thence South at 1160 varas north bank of shallow draw, at 1200 varas south bank of said draw, on 1900.8 varas in all to a pipe set for the S E corner of this survey and the S W corner of survey 25 this block, marked "S 24"

Thence West 950.4 varas to a stake set for the S E corner of survey 23 this block and the S W corner of this survey,

Thence North 1900.8 varas,

F-148968
CORRECT ON MAP FOR 320 ACRES
11-1-46 H.H.A.
Patented
11-4-46
Robertson

to the place of beginning.

Chain Carriers

Frank Johnson

Lloyd Anderson.

Surveyed May 1924.

By special act of the Legislature March 1925.

I, *James P. Dod*, Licensed Land Surveyor of the State of Texas, do hereby

certify that the foregoing survey was made by me on the ground, and according to law; that the limits, boundaries and corners, with the marks, natural and artificial, are truly described in the foregoing Field Notes, just as I found them on the ground; and they are recorded in Book _____, Page _____, Surveyor's Records of said county.

James P. Dod

Licensed Land Surveyor.

This _____ day of _____ 1924.

THE STATE OF TEXAS,
DALLAM County.

Survey No. 25
Block C. S.

107/2

ORIGINAL FIELD NOTES of a survey of 320 acres of land in DALLAM

County, Texas, made for the permanent public free school fund of the State of Texas by virtue of a final decree in the Fifty-third Judicial District Court, Travis County, Texas, dated the 26th day of April, 1924, in Cause No. 36183, wherein the State of Texas was plaintiff and George P. Findlay and others were defendants and known as the Capitol Syndicate Case. Said land having been appropriated to the permanent public free school fund and survey authorized by Chapter 106, Act of the Regular Session of the 38th Legislature, 1923, Page 222.

(For Supreme Court decision see 250 S. W. Rep., Page 651.)

Situated about 22.3 miles N 5°30'W from county seat.

Beginning at

a pipe set for the S W corner survey 8 this block, marked "S 8", for the N W corner of this survey,

Thence East 950.4 varas to a stake set for the S W corner of survey 7, this block for the N E corner of this survey,

Thence South 1900.8 varas to a stake set for the S E corner of this survey and the S W corner of survey 26, this block,

Thence West 950.4 varas to a pipe set for the S E corner of survey 24, this block, marked "S 24", for the S W corner of this survey, from which a windmill bears North 942.3 varas and East 537.6 varas,

Thence North 1900.8 varas ,

148917
CORRECT ON MAP FOR 320 ACRES
7/14/50 VES
Calculated
7-19-50
Robert Seave

to the place of beginning.

Chain Carriers } Frank Johnson
 } Lloyd Anderson.

Surveyed May 1924.

I, James P. Dod, by special act of the Legislature March 1926, Licensed Land Surveyor of the State of Texas,

do hereby certify that the foregoing survey was made by me on the ground, and according to law; that the limits, boundaries and corners, with the marks, natural and artificial, are truly described in the foregoing Field Notes, just as I found them on the ground; and they are recorded in Book _____, Page _____, Surveyor's Records of said county.

This _____ day of _____ 1924.

James P. Dod
Licensed Land Surveyor.

THE STATE OF TEXAS,

Survey No. 26

DALLAM County.

Block C. S.

ORIGINAL FIELD NOTES of a survey of 316.4 acres of land in DALLAM

County, Texas, made for the permanent public free school fund of the State of Texas by virtue of a final decree in the Fifty-third Judicial District Court, Travis County, Texas, dated the 26th day of April, 1924, in Cause No. 36183, wherein the State of Texas was plaintiff and George P. Findlay and others were defendants and known as the Capitol Syndicate Case. Said land having been appropriated to the permanent public free school fund and survey authorized by Chapter 106, Act of the Regular Session of the 38th Legislature, 1923, Page 222.

(For Supreme Court decision see 250 S. W. Rep., Page 651.)

Situated about 22.3 miles N 5° 30' W from county seat.

Beginning at

a stake set for the S W corner of survey 7, this block, for the N W corner of this survey,

Thence East 939.6 varas to a pipe set for the S E corner of said survey 7, marked "S 7", on the west side of the Dalhart--Boise City Lane, for the N E corner of this survey, from which a pipe Marked "S 6" set for the S W corner of survey 6 this block and the N W corner of 27 this block, set on the east side of said lane bears East 21.6 varas, for the N E corner of this survey,

Thence South with the west side of said lane at about 950 varas center of lake, on 1900.8 varas in all to a pipe set for the S E corner of this survey and the N E corner of survey 39 this block, marked "S 26", said pipe is on the west side of said Dalhart to Boise City Lane, from which pipe, a pipe set for the S W corner of survey 27 and the N W corner of survey 38 this block, marked "S 27" and on the east side of said lane, bears East 21.6 varas,

Thence West 939.6 varas to a stake set for the S E corner of survey 25, and the -S W corner of this survey,

Thence North 1900.8 varas,

to the place of beginning.

F- 148943
CORRECT ON MAP FOR 316.4 ACRES
11-7-47
Patented 11-13-47
Robinson

Chain Carriers } Frank Johnson
Lloyd Anderson

Surveyed May, 1924.

I, James P. Dod, Licensed Land Surveyor of the State of Texas, do hereby certify that the foregoing survey was made by me on the ground, and according to law; that the limits, boundaries and corners, with the marks, natural and artificial, are truly described in the foregoing Field Notes, just as I found them on the ground; and they are recorded in Book....., Page....., Surveyor's Records of said county.

This.....day of.....1924.

James P. Dod
Licensed Land Surveyor.

THE STATE OF TEXAS,

Survey No. 27,

DALLAM County.

Block C. S.

*FN. OK for 316.4 acres
4-7-47
2/2/47*

ORIGINAL FIELD NOTES of a survey of 316.4 acres of land in DALLAM

County, Texas, made for the permanent public free school fund of the State of Texas by virtue of a final decree in the Fifty-third Judicial District Court, Travis County, Texas, dated the 26th day of April, 1924, in Cause No. 36183, wherein the State of Texas was plaintiff and George P. Findlay and others were defendants and known as the Capitol Syndicate Case. Said land having been appropriated to the permanent public free school fund and survey authorized by Chapter 106, Act of the Regular Session of the 38th Legislature, 1923, Page 222.

(For Supreme Court decision see 250 S. W. Rep., Page 651.)

Situated about 22.2 miles N 29°45'W from county seat.

Beginning at

A pipe set for the S W corner of survey 6, this block, on the east side of the Dalhart -- Boise City Lane, marked "S 6", and from which the N E corner of survey 26, and the S E corner of survey 7, this block an pipe set on the west side of said lane, marked "S 7" bears West 21.6 varas, for the N W and beginning corner of this survey

Thence East 939.6 varas to a stake set for the S W corner of survey 5 this block, for the N E corner of this survey,

Thence South 1900.8 varas to a stake set for the S E corner of this survey and the S W corner of survey 28 this block,

Thence West 939.6 varas to a pipe set on the east side of said the Dalhart to Boise City lane, set for the S W corner of this survey and the N W corner of survey 38 this block, marked "S 27", from which the S E corner of survey 26 and the N E corner of survey 39, a pipe on the west side of said lane, and marked "S 26" bears west 21.6 varas,

Thence North, at about 950 varas center of a lake, on 1900.8 varas in all

*F-148944
CORRECT ON MAP FOR 316.4 ACRES
1-27-47 HSKA
Patented
1-29-47
Johnson*

to the place of beginning.

Chain Carriers } Frank Johnson
Lloyd Anderson

Surveyed May 1924.

I, James P. Dod, Licensed Land Surveyor of the State of Texas, do hereby

certify that the foregoing survey was made by me on the ground, and according to law; that the limits, boundaries and corners, with the marks, natural and artificial, are truly described in the foregoing Field Notes, just as I found them on the ground; and they are recorded in Book _____, Page _____, Surveyor's Records of said county.

This _____ day of _____ 1924.

James P. Dod
Licensed Land Surveyor.

OC

THE STATE OF TEXAS,

DALLAM County.

Survey No. 28

Block C. S.

O.K. 6-25-40

ORIGINAL FIELD NOTES of a survey of 320 acres of land in DALLAM

County, Texas, made for the permanent public free school fund of the State of Texas by virtue of a final decree in the Fifty-third Judicial District Court, Travis County, Texas, dated the 26th day of April, 1924, in Cause No. 36183, wherein the State of Texas was plaintiff and George P. Findlay and others were defendants and known as the Capitol Syndicate Case. Said land having been appropriated to the permanent public free school fund and survey authorized by Chapter 106, Act of the Regular Session of the 38th Legislature, 1923, Page 222.

(For Supreme Court decision see 250 S. W. Rep., Page 651.)

Situated about 22.2 miles N. 2°45'W from county seat.

Beginning at

a stake set for the S W corner of survey 5 this block, for the N W corner of this survey,

Thence East 950.4 varas a pipe set for the S W corner of survey 4 this block, and marked " S 4" , for the N E corner of this survey,

Thence South 1900.8 varas to a pipe set for the S E corner of this survey and the S W corner of survey 29 this block, marked " S 28",

Thence West 950.4 varas to a stake set for the S E corner of survey 27 this block and the S W corner of this survey,

Thence North 1900.8 varas,

Patented
7-19-40
Johnson

to the place of beginning.

Chain Carriers } Frank Johnson
 } Lloyd Anderson

Surveyed May 1924.

I, James P. Dod, By special act of the Legislature March 1925, Licensed Land Surveyor of the State of Texas, do hereby

certify that the foregoing survey was made by me on the ground, and according to law; that the limits, boundaries and corners, with the marks, natural and artificial, are truly described in the foregoing Field Notes, just as I found them on the ground; and they are recorded in Book _____, Page _____, Surveyor's Records of said county.

This _____ day of _____ 1924.

James P. Dod
Licensed Land Surveyor.

O.K.

ORIGINAL FIELD NOTES OF A SURVEY OF 320 ACRES

County: Tarrant State: Texas Date of Survey: April 1940
The survey was made for the purpose of subdividing the land owned by the Texas State Board of Health, and is subject to the provisions of the Act of the Legislature of the State of Texas, approved March 22, 1937, Chapter 107, Acts of the 45th Legislature, 1937, and the amendments thereto.

(The Surveyor's Commission No. 200, A. W. Hays, expires on 12/31/40)

Surveyor: A. W. Hays, Dallas, Texas

Beginning at

a stake set for the S.W. corner of survey 5 this block, for the N.E. corner of this survey,

thence East 88.4 yards a pipe set for the S.W. corner of survey 4 this block, and marked "S-4", for the N.E. corner of this survey,

thence South 100.0 yards to a pipe set for the S.E. corner of this survey and the S.W. corner of survey 32 this block, marked "S-32",

thence West 95.4 yards to a stake set for the S.W. corner of survey 32 this block and the S.W. corner of this survey,

thence North 100.0 yards,

Frank Johnson
Lloyd Anderson

LAND OFFICE
F-148955
FIELD NOTES

Filed 19

Bascom Giles
Commissioner.

Atlee
Clerk.

Approved 19

Commissioner.

CORRECT ON MAP FOR 320 ACRES

6-25-40
Atlee

THE STATE OF TEXAS,

Survey No. 29

DALLAM County.

Block C. S.

ORIGINAL FIELD NOTES of a survey of 320 acres of land in DALLAM

County, Texas, made for the permanent public free school fund of the State of Texas by virtue of a final decree in the Fifty-third Judicial District Court, Travis County, Texas, dated the 26th day of April, 1924, in Cause No. 36183, wherein the State of Texas was plaintiff and George P. Findlay and others were defendants and known as the Capitol Syndicate Case. Said land having been appropriated to the permanent public free school fund and survey authorized by Chapter 106, Act of the Regular Session of the 38th Legislature, 1923, Page 222.

(For Supreme Court decision see 250 S. W. Rep., Page 651.)

Situated about 22.2 miles North from county seat.

Beginning at

a pipe set for the S W corner of survey 4 this block and marked "S 4", for the N W corner of this survey,

Thence East 950.4 varas to a stake set for the S W corner of survey 3 this block for the N E corner of this survey,

Thence South 1900.8 varas to a stake set for the S E corner of this survey and the S W corner of survey 30 this block,

Thence West 950.4 varas to a pipe set for the S E corner of survey 28 this block and the S W corner of this survey, marked "S 28"

Thence North ~~950.4~~^{1900.8} varas

F. 148945
CORRECT ON MAP FOR
8-22-25
J. J. O'Neil

to the place of beginning.

Chain Carriers } FRANK JOHNSON
 } LLOYD ANDERSON

Surveyed May 1924.

I, James P. Dod, *By special act of the Legislature March 1925.* Licensed Land Surveyor of the State of Texas, do hereby

certify that the foregoing survey was made by me on the ground, and according to law; that the limits, boundaries and corners, with the marks, natural and artificial, are truly described in the foregoing Field Notes, just as I found them on the ground; and they are recorded in Book _____, Page _____, Surveyor's Records of said county.

This _____ day of _____ 1924.

James P. Dod
Licensed Land Surveyor.

OK

THE STATE OF TEXAS,

Survey No. 30

DALLAM County.

Block C. S.

ORIGINAL FIELD NOTES of a survey of 320 acres of land in DALLAM

County, Texas, made for the permanent public free school fund of the State of Texas by virtue of a final decree in the Fifty-third Judicial District Court, Travis County, Texas, dated the 26th day of April, 1924, in Cause No. 36183, weherin the State of Texas was plaintiff and George P. Findlay and others were defendants and known as the Capitol Syndicate Case. Said land having been appropriated to the permanent public free school fund and survey authorized by Chapter 106, Act of the Regular Session of the 38th Legislature, 1923, Page 222.

(For Supreme Court decision see 250 S. W. Rep., Page 651.)

Situated about 22.2 miles North from county seat.

Beginning at

a stake set for the S W corner of survey 3, this block, for the N W corner of this survey,

Thence East 950.4 varas to a pipe set for the S.W corner of survey 2 this block, marked "S 2", for the N E corner of this survey,

Thence South at about 300 varas canter of lake, on 1900.8 varas in all to a pipe set for the S E corner of this survey, and the S W corner of survey 31, this block, marked "S 30",

Thence West 950.4 varas to a stake set for the S E corner of survey 29 this block and the S W corner of this survey,

Thence North 1900.8 varas

F- 148946
CORRECT ON MAP FOR 320 ACRES
11-7-47
Patience
11-13-47
Robertson

to the place of beginning.

Chain Carriers } Frank Johnson
 } Lloyd Anderson

Surveyed May 1924.

I, James P. God, By special act of the Legislature March 1925, Licensed Land Surveyor of the State of Texas, do hereby

certify that the foregoing survey was made by me on the ground, and according to law; that the limits, boundaries and corners, with the marks, natural and artificial, are truly described in the foregoing Field Notes, just as I found them on the ground; and they are recorded in Book, Page, Surveyor's Records of said county.

This day of 1924.

James P. God
Licensed Land Surveyor.

OK

LAND OFFICE

THE STATE OF TEXAS,

Survey No. 31

DALLAM County.

Block C. S.

ORIGINAL FIELD NOTES of a survey of 320 acres of land in DALLAM

County, Texas, made for the permanent public free school fund of the State of Texas by virtue of a final decree in the Fifty-third Judicial District Court, Travis County, Texas, dated the 26th day of April, 1924, in Cause No. 36183, wherein the State of Texas was plaintiff and George P. Findlay and others were defendants and known as the Capitol Syndicate Case. Said land having been appropriated to the permanent public free school fund and survey authorized by Chapter 106, Act of the Regular Session of the 38th Legislature, 1923, Page 222.

(For Supreme Court decision see 250 S. W. Rep., Page 651.)

Situated about 22.2 miles N 3° 15' E from county seat.

Beginning at

a pipe set for the S W corner of survey 2, this block, marked "S 2", for the N W corner of this survey,

Thence East 950.4 varas to a stake set for the S W corner of survey 1, this block for the N E corner of this survey,

Thence South 1900.8 varas to a stake set for the S E corner of this survey and the S W corner of survey 32 this block,

Thence West 950.4 to a pipe set for the S E corner of survey 30, this block and the S W corner of this survey,

Thence North, at about 1600 varas center of lake, on 1900.8 varas in all

F-148947
CORRECT ON MAP FOR 320 ACRES
9-3-47
Patented 9-16-47
J. Johnson

to the place of beginning.

Chain Carriers } Frank Johnson
Lloyd Anderson

Surveyed May, 1924.

I, James P. Rod, Licensed Land Surveyor of the State of Texas, do hereby

certify that the foregoing survey was made by me on the ground, and according to law; that the limits, boundaries and corners, with the marks, natural and artificial, are truly described in the foregoing Field Notes, just as I found them on the ground; and they are recorded in Book, Page, Surveyor's Records of said county.

This day of 1924.

James P. Rod
Licensed Land Surveyor.

OK

THE STATE OF TEXAS,

Survey No. 32

DALLAM County.

Block C. S.

ORIGINAL FIELD NOTES of a survey of 320 acres of land in DALLAM

County, Texas, made for the permanent public free school fund of the State of Texas by virtue of a final decree in the Fifty-third Judicial District Court, Travis County, Texas, dated the 26th day of April, 1924, in Cause No. 36183, wherein the State of Texas was plaintiff and George P. Findlay and others were defendants and known as the Capitol Syndicate Case. Said land having been appropriated to the permanent public free school fund and survey authorized by Chapter 106, Act of the Regular Session of the 38th Legislature, 1923, Page 222.

(For Supreme Court decision see 250 S. W. Rep., Page 651.)

Situated about 22.2 miles N 30 15 E from county seat.

Beginning at

a stake the S W corner of survey 1 this block for the N W corner of this survey,

Thence East 950.4 varas to a pipe set for the S E corner of said survey 1, and the N E corner of this survey, marked " S 1 ", set on the Partition line,

Thence South 1900.8 varas with said Parttion Line to a pipe set for the S E corner of this survey and the N E corner of survey 33 this block, marked " S 32 ",

Thence West 950.4 varas to a stake set for the S E corner of survey 31 this block and the S W corner of this survey,

Thence North 1900.8 varas

to the place of beginning.

Chain Carriers } Frank Johnson
Lloyd Anderson

Surveyed May 1924.

I, James R. Dod, Licensed Land Surveyor of the State of Texas, do hereby

certify that the foregoing survey was made by me on the ground, and according to law; that the limits, boundaries and corners, with the marks, natural and artificial, are truly described in the foregoing Field Notes, just as I found them on the ground; and they are recorded in Book, Page, Surveyor's Records of said county.

James R. Dod Licensed Land Surveyor.

This day of 1924.

SK

THE STATE OF TEXAS,

Survey No. 33

DALLAM County.

Block C. S.

ORIGINAL FIELD NOTES of a survey of 320 acres of land in DALLAM

County, Texas, made for the permanent public free school fund of the State of Texas by virtue of a final decree in the Fifty-third Judicial District Court, Travis County, Texas, dated the 26th day of April, 1924, in Cause No. 36183, wherein the State of Texas was plaintiff and George P. Findlay and others were defendants and known as the Capitol Syndicate Case. Said land having been appropriated to the permanent public free school fund and survey authorized by Chapter 106, Act of the Regular Session of the 38th Legislature, 1923, Page 222.

(For Supreme Court decision see 250 S. W. Rep., Page 651.)

Situated about 21.2 miles N 3° 15' E from county seat.

Beginning at

a pipe set for the S E corner of survey 32, this block, marked "S 32" and in the Partition Line, for the N E corner of this survey,

Thence South 1900.8 varas with said Partition Line to a pipe set for the S E corner of this survey and the N E corner of survey 64 this block, marked "S 33", from which the S E corner of League No. 40 bears N 70° 12' W 194 varas,

Thence West 950.4 varas to a stake set for the S W corner of this survey and the S E corner of survey 34 this block,

Thence North 1900.8 varas to a stake set for the S W corner survey 32 this block, for the N W corner of this survey,

Thence East 950.4 varas ,

to the place of beginning.

Chain Carriers } Frank Johnson
 } Lloyd Anderson

Surveyed May 1924.

I, James P. Dod *By special act of the Legislature March 1925*, Licensed Land Surveyor of the State of Texas, do hereby

certify that the foregoing survey was made by me on the ground, and according to law; that the limits, boundaries and corners, with the marks, natural and artificial, are truly described in the foregoing Field Notes, just as I found them on the ground; and they are recorded in Book....., Page....., Surveyor's Records of said county.

This..... day of..... 1924.

James P. Dod
Licensed Land Surveyor.

THE STATE OF TEXAS,

DALLAM County.

Survey No. 34

Block C. S.

ORIGINAL FIELD NOTES of a survey of 320 acres of land in DALLAM

County, Texas, made for the permanent public free school fund of the State of Texas by virtue of a final decree in the Fifty-third Judicial District Court, Travis County, Texas, dated the 26th day of April, 1924, in Cause No. 36183, weherin the State of Texas was plaintiff and George P. Findlay and others were defendants and known as the Capitol Syndicate Case. Said land having been appropriated to the permanent public free school fund and survey authorized by Chapter 106, Act of the Regular Session of the 38th Legislature, 1923, Page 222.

(For Supreme Court decision see 250 S. W. Rep., Page 651.)

Situated about 21.2 miles N 3°15'E from county seat.

Beginning at

a stake set for the S W corner of Survey 32 this Block and the NE corner of this survey,

Thence South 1900.8 varas to a stake set for the S W corner of survey 33 this Block and the S E corner of this survey,

Thence West 950.4 varas to a pipe set for the S W corner of this survey and the S E corner of survey 35 this block, marked "S 34",

Thence North 1900.8 varas to a pipe set for the S E corner of Survey 30 this Block for the N W corner this survey , marked "S 30",

Thence East 950.4 varas

to the place of beginning.

Chain Carriers } Frank Johnson
Lloyd Anderson

Surveyed May 1924.

by special act of the Legislative March 1926

I, James P. Dod, Licensed Land Surveyor of the State of Texas, do hereby

certify that the foregoing survey was made by me on the ground, and according to law; that the limits, boundaries and corners, with the marks, natural and artificial, are truly described in the foregoing Field Notes, just as I found them on the ground; and they are recorded in Book....., Page....., Surveyor's Records of said county.

This..... day of..... 1924.

James P. Dod
Licensed Land Surveyor.

OK

THE STATE OF TEXAS,

Survey No. 35

DALLAM County.

Block C. S.

ORIGINAL FIELD NOTES of a survey of 320 acres of land in DALLAM

County, Texas, made for the permanent public free school fund of the State of Texas by virtue of a final decree in the Fifty-third Judicial District Court, Travis County, Texas, dated the 26th day of April, 1924, in Cause No. 36183, weherin the State of Texas was plaintiff and George P. Findlay and others were defendants and known as the Capitol Syndicate Case. Said land having been appropriated to the permanent public free school fund and survey authorized by Chapter 106, Act of the Regular Session of the 38th Legislature, 1923, Page 222.

(For Supreme Court decision see 250 S. W. Rep., Page 651.)

Situated about 21.2 miles North from county seat.

Beginning at

a pipe set for the S E corner of survey 30 this block, and the N W corner of survey 34, marked "S 30", for the N E corner this survey,

Thence South 1900.8 varas to a pipe set for the S W corner said survey 34, marked "S 34", for the S E corner this survey, from which a windmill bears North 617.0 varas, and West 172.0 varas,

Thence West 950.4 varas to a stake set for the S W corner of this survey and the S E corner survey 36 this block,

Thence North 1900.8 varas to a stake set for the S E corner survey 29 this block, for the N W corner of this survey,

Thence East 950.4 varas,

to the place of beginning.

Chain Carriers } Frank Johnson
Lloyd Anderson

Surveyed May 1924.

I, James P. Dod, Licensed Land Surveyor of the State of Texas, do hereby certify that the foregoing survey was made by me on the ground, and according to law; that the limits, boundaries and corners, with the marks, natural and artificial, are truly described in the foregoing Field Notes, just as I found them on the ground; and they are recorded in Book, Page, Surveyor's Records of said county.

This day of 1924.

James P. Dod Licensed Land Surveyor.

THE STATE OF TEXAS,

Survey No. 36

DALLAM County.

Block C. S.

ORIGINAL FIELD NOTES of a survey of 320 acres of land in DALLAM

County, Texas, made for the permanent public free school fund of the State of Texas by virtue of a final decree in the Fifty-third Judicial District Court, Travis County, Texas, dated the 26th day of April, 1924, in Cause No. 36183, wherein the State of Texas was plaintiff and George P. Findlay and others were defendants and known as the Capitol Syndicate Case. Said land having been appropriated to the permanent public free school fund and survey authorized by Chapter 106, Act of the Regular Session of the 38th Legislature, 1923, Page 222.

(For Supreme Court decision see 250 S. W. Rep., Page 651.)

Situated about 21.2 miles North from county seat.

Beginning at

a stake set for the S E corner survey 29 and the N W corner of S survey 35 this Block, for the N E corner this survey,

Thence South 1900.8 varas to a stake set for the S W corner ~~this~~ of survey 35 this block and the S E corner this survey,

Thence West 950.4 varas to a pipe set for the S W corner this survey and the S E corner survey 37 this Block, marked "S36",

Thence North 1900.8 varas to a pipe set for the S E corner of survey 28 this Block, for the N W corner this survey,

Thence East 950.4 varas to

to the place of beginning.

Chain Carriers } Frank Johnson
Lloyd Anderson

Surveyed May, 1924.

By Special Act of the Legislature March 1925.

I, James P. Dod, Licensed Land Surveyor of the State of Texas, do hereby

certify that the foregoing survey was made by me on the ground, and according to law; that the limits, boundaries and corners, with the marks, natural and artificial, are truly described in the foregoing Field Notes, just as I found them on the ground; and they are recorded in Book, Page, Surveyor's Records of said county.

This day of 1924.

James P. Dod
Licensed Land Surveyor.

OK

F-148909
CORRECT ON MAP FOR 320 ACRES
11-7-47
Patented
11-13-47
Robert Seane

THE STATE OF TEXAS,

Survey No. 37

DALLAM County.

Block C. S.

*O.K. for 320 Acres
8-21-40 N.A.W.R.*

ORIGINAL FIELD NOTES of a survey of 320 acres of land in DALLAM

County, Texas, made for the permanent public free school fund of the State of Texas by virtue of a final decree in the Fifty-third Judicial District Court, Travis County, Texas, dated the 26th day of April, 1924, in Cause No. 36183, wherein the State of Texas was plaintiff and George P. Findlay and others were defendants and known as the Capitol Syndicate Case. Said land having been appropriated to the permanent public free school fund and survey authorized by Chapter 106, Act of the Regular Session of the 38th Legislature, 1923, Page 222.

(For Supreme Court decision see 250 S. W. Rep., Page 651.)

Situated about 21.2 miles N 2° 45' W from county seat.

Beginning at

a pipe set for the S E corner of survey 28 this Block also the NW corner of Survey 36, for the N E corner this survey, marked "S 28"

Thence South 1900.8 varas to a pipe set for the S W corner of survey 36 this block and the S E corner this survey, marked "S 36",

Thence West 950.4 varas to a stake set for the S W corner of this survey and the S E corner of survey 38 this block,

Thence North 1900.8 varas to a stake set for the S E corner of Survey 27 this block ~~aka~~ for the N W corner of this survey,

Thence East 950.4 varas

*Patented
9-12-40
Anderson*

to the place of beginning.

Chain Carriers } Frank Johnson
 } Lloyd Anderson

Surveyed May 1924.

By special act of the Legislature March 1925.

I, James P. Dod, Licensed Land Surveyor of the State of Texas, do hereby

certify that the foregoing survey was made by me on the ground, and according to law; that the limits, boundaries and corners, with the marks, natural and artificial, are truly described in the foregoing Field Notes, just as I found them on the ground; and they are recorded in Book....., Page....., Surveyor's Records of said county.

James P. Dod
Licensed Land Surveyor.

This.....day of.....1924.

OK

LAND OFFICE
148975-
FIELD NOTES

Filed..... 19.....

Bascom Giles
Commissioner.

French
Clerk.

Approved..... 19.....

Commissioner.

CORRECT ON MAP FOR 320⁰ ACRES

8-21-40
F

8-21-40 F

THE STATE OF TEXAS,

Survey No. 38

DALLAM County.

Block C. S.

*F.H. of E. for 316.4 acres
E 47 7 1/2 18 9 5 7
CORRECT ON MAP FOR 316.4 ACRES
12-4-1941*

ORIGINAL FIELD NOTES of a survey of ~~520~~ 316.4 acres of land in DALLAM

County, Texas, made for the permanent public free school fund of the State of Texas by virtue of a final decree in the Fifty-third Judicial District Court, Travis County, Texas, dated the 26th day of April, 1924, in Cause No. 36183, wherein the State of Texas was plaintiff and George P. Findlay and others were defendants and known as the Capitol Syndicate Case. Said land having been appropriated to the permanent public free school fund and survey authorized by Chapter 106, Act of the Regular Session of the 38th Legislature, 1923, Page 222.

(For Supreme Court decision see 250 S. W. Rep., Page 651.)

Situated about 21.2 miles N 29° 45' W from county seat.

Beginning at

a stake set for the S E corner of survey 27 this block and the NW corner of survey 37, for the N E corner of this survey,

Thence South 1900.8 varas to a stake set for the S W corner of survey 37 and the S E corner of this survey

Thence West 939.6 varas to a pipe set under fence on East side of the Dalhart to Boise City Lane, set for the S W corner of this survey and the N W corner of survey 59 this block, marked "S 38", from which the S E corner of Survey 39 and the N E corner of Survey 58, a pipe set on west side of said lane, and marked "S 39", bears West 21.6 varas,

Thence North 1900.8 varas with the East side of said Lane to a pipe set for the S W corner of Survey 27, for the N W corner this survey, marked "S 27",

Thence East 939.6 varas

*Corrected
Field Notes
required to
eliminate
Highway
1818 Ac. +
in mid-pt.
2/25/63
VES*

to the place of beginning.

Chain Carriers } Frank Johnson
Lloyd Anderson.

Surveyed May, 1924.

By special act of the Legislature March 1925

I, James P. Dod, Licensed Land Surveyor of the State of Texas, do hereby

certify that the foregoing survey was made by me on the ground, and according to law; that the limits, boundaries and corners, with the marks, natural and artificial, are truly described in the foregoing Field Notes, just as I found them on the ground; and they are recorded in Book....., Page....., Surveyor's Records of said county.

This..... day of..... 1924.

James P. Dod
Licensed Land Surveyor.

OK

THE STATE OF TEXAS,

Survey No. 39

DALLAM County.

Block C. S.

ORIGINAL FIELD NOTES of a survey of ~~320.4~~ ^{316.4} acres of land in DALLAM

County, Texas, made for the permanent public free school fund of the State of Texas by virtue of a final decree in the Fifty-third Judicial District Court, Travis County, Texas, dated the 26th day of April, 1924, in Cause No. 36183, wherein the State of Texas was plaintiff and George P. Findlay and others were defendants and known as the Capitol Syndicate Case. Said land having been appropriated to the permanent public free school fund and survey authorized by Chapter 106, Act of the Regular Session of the 38th Legislature, 1923, Page 222.

(For Supreme Court decision see 250 S. W. Rep., Page 651.)

Situated about 21.2 miles N 5° 30' W from county seat.

Beginning at

a pipe set for the S E corner of survey 26, this block, marked "S 26", from which the S W corner of survey 27 and N W corner of 38 bears East 21.6 varas, a pipe marked "S 27" on the East Side of the Dalhart to Boise City Lane, for the N E corner of this survey,

Thence South 1900.8 varas to a pipe set for the S E corner of this survey and the N E corner of survey 58 this block, marked "S 39", from which the S W corner of survey 38 and the N W corner of Survey 59 a pipe set on the East side of said lane bears East 21.6 varas,

Thence West 939.6 varas to a stake set for the S W corner of this survey and the S E corner of survey 40 this block,

Thence North 1900.8 varas to a stake set for the S E corner of survey 25 this block for the N W this,

Thence East 939.6 varas

*Cor. F.N. 1924
Lane Abandoned*

to the place of beginning.

Chain Carriers } Frank Johnson
 } Lloyd Anderson

Surveyed May, 1924.

By special act of the Legislature March 1925

I, James P. Dod, Licensed Land Surveyor of the State of Texas, do hereby

certify that the foregoing survey was made by me on the ground, and according to law; that the limits, boundaries and corners, with the marks, natural and artificial, are truly described in the foregoing Field Notes, just as I found them on the ground; and they are recorded in Book....., Page....., Surveyor's Records of said county.

James P. Dod
Licensed Land Surveyor.

This..... day of..... 1924.

OTC

THE STATE OF TEXAS,

Survey No. 40

DALLAM County.

Block C. S.

ORIGINAL FIELD NOTES of a survey of 320 acres of land in DALLAM

County, Texas, made for the permanent public free school fund of the State of Texas by virtue of a final decree in the Fifty-third Judicial District Court, Travis County, Texas, dated the 26th day of April, 1924, in Cause No. 36183, wherein the State of Texas was plaintiff and George P. Findlay and others were defendants and known as the Capitol Syndicate Case. Said land having been appropriated to the permanent public free school fund and survey authorized by Chapter 106, Act of the Regular Session of the 38th Legislature, 1923, Page 222.

(For Supreme Court decision see 250 S. W. Rep., Page 651.)

Situated about 21.2 miles N 5° 30' W from county seat.

Beginning at

a stake set for the S E corner of survey 25 this Block and the N W corner of survey 39 this Block for the N E corner of this survey,

Thence South 1900.8 varas to a stake set for the S W corner of survey 39 and the S E corner of this survey,

Thence West 950.4 varas to a pipe set for the S W corner of this survey and the S E corner of Survey 41 this block, marked "S 40",

Thence North 1900.8 varas to a pipe set for the S E corner of Survey 24 this Block, ~~marked~~, marked "S 24", for the N W corner of this survey,

Thence East 950.4 varas

to the place of beginning.

Chain Carriers } Frank Johnson
Lloyd Anderson.

Surveyed May 1924.

By special act of the Legislature March 1925.

I, James P. Dod, Licensed Land Surveyor of the State of Texas, do hereby

certify that the foregoing survey was made by me on the ground, and according to law; that the limits, boundaries and corners, with the marks, natural and artificial, are truly described in the foregoing Field Notes, just as I found them on the ground; and they are recorded in Book, Page, Surveyor's Records of said county.

James P. Dod

Licensed Land Surveyor.

This day of 1924.

OK

F-148977
CORRECT ON MAP FOR 320 ACRES
9-3-47
Balinted
9-10-47
Coker

THE STATE OF TEXAS,

Survey No. 41

DALLAM County.

Block C. S.

ORIGINAL FIELD NOTES of a survey of 320 acres of land in DALLAM

County, Texas, made for the permanent public free school fund of the State of Texas by virtue of a final decree in the Fifty-third Judicial District Court, Travis County, Texas, dated the 26th day of April, 1924, in Cause No. 36183, wherein the State of Texas was plaintiff and George P. Findlay and others were defendants and known as the Capitol Syndicate Case. Said land having been appropriated to the permanent public free school fund and survey authorized by Chapter 106, Act of the Regular Session of the 38th Legislature, 1923, Page 222.

(For Supreme Court decision see 250 S. W. Rep., Page 651.)

Situated about 21.5 miles N 8° W from county seat.

Beginning at

a pipe set for the S E corner of survey 24 this block and the N W corner of Survey 40, marked "S 24", for the N E corner of this survey,

Thence South 1900.8 varas to a pipe set for the S W corner of said Survey 40, and the S E corner of this survey, marked "S 40",

Thence West 950.4 varas to a stake set for the S W corner of this Survey and the S E corner of survey 42 this Block,

Thence North 1900.8 varas to a stake set for the ^S E corner of Survey 23, and the N W corner of this survey,

Thence East 950.4 varas

F-148978
CORRECT ON MAP FOR 320 ACRES
9-3-47
Patented
9-10-47
Robertson

to the place of beginning.

Chain Carriers } Frank Johnson
 } Lloyd Anderson

Surveyed May 1924.

By special act of the Legislature March 1925.

I, James P. Dod, Licensed Land Surveyor of the State of Texas, do hereby certify that the foregoing survey was made by me on the ground, and according to law; that the limits, boundaries and corners, with the marks, natural and artificial, are truly described in the foregoing Field Notes, just as I found them on the ground; and they are recorded in Book _____, Page _____, Surveyor's Records of said county.

This _____ day of _____ 1924.

James P. Dod
Licensed Land Surveyor.

OK

THE STATE OF TEXAS,

Survey No. 42

DALLAM County.

Block C. S.

ORIGINAL FIELD NOTES of a survey of 320 acres of land in DALLAM

County, Texas, made for the permanent public free school fund of the State of Texas by virtue of a final decree in the Fifty-third Judicial District Court, Travis County, Texas, dated the 26th day of April, 1924, in Cause No. 36183, wherein the State of Texas was plaintiff and George P. Findlay and others were defendants and known as the Capitol Syndicate Case. Said land having been appropriated to the permanent public free school fund and survey authorized by Chapter 106, Act of the Regular Session of the 38th Legislature, 1923, Page 222.

(For Supreme Court decision see 250 S. W. Rep., Page 651.)

Situated about 21.5 miles N 89° W from county seat.

Beginning at

a stake set for the S E corner of Survey 23 this block and the N W corner of survey 41 this Block, for the N E corner this survey,

Thence South 1900.8 varas to a stake set for the S W corner of survey 41 and the S E corner of this survey,

Thence West 950.4 varas to a pipe set for the S W corner of this survey and the S E corner of survey 43 this Block, marked "S 42",

Thence North 1900.8 varas to a pipe set for the S E corner of ~~ixix~~ Survey 22 this Block for the N W corner of this survey,

Thence East 950.4 varas

to the place of beginning.

Chain Carriers

Frank Johnson

Lloyd Anderson.

Surveyed May 1924.

I, James P. Dod

By special act of the Legislature March 1925

Licensed Land Surveyor of the State of Texas, do hereby

certify that the foregoing survey was made by me on the ground, and according to law; that the limits, boundaries and corners, with the marks, natural and artificial, are truly described in the foregoing Field Notes, just as I found them on the ground; and they are recorded in Book....., Page....., Surveyor's Records of said county.

James P. Dod

Licensed Land Surveyor.

This..... day of..... 1924.

OK

THE STATE OF TEXAS,

Survey No. 43

DALLAM County.

Block C. S.

ORIGINAL FIELD NOTES of a survey of 320 acres of land in DALLAM

County, Texas, made for the permanent public free school fund of the State of Texas by virtue of a final decree in the Fifty-third Judicial District Court, Travis County, Texas, dated the 26th day of April, 1924, in Cause No. 36183, wherein the State of Texas was plaintiff and George P. Findlay and others were defendants and known as the Capitol Syndicate Case. Said land having been appropriated to the permanent public free school fund and survey authorized by Chapter 106, Act of the Regular Session of the 38th Legislature, 1923, Page 222.

(For Supreme Court decision see 250 S. W. Rep., Page 651.)

Situated about 22 miles N 13° 30' W from county seat.

Beginning at

a pipe set for the S E corner of survey 22 and the N W corner of survey 42, marked "S22", for the N E corner of this survey,

Thence South 1900.8 varas to a pipe set for the S W corner of survey 42, and the S E corner of this survey, marked "S 42",

Thence West 950.4 varas to a stake set for the S W corner of this survey and the S E corner of survey 44,

Thence North 1900.8 varas to a stake set for the S E corner of Survey 21, for the N W corner of this survey,

Thence East 950.4 varas t

to the place of beginning.

Chain Carriers

Frank Johnson

Lloyd Anderson

Surveyed May 1924.

I, James P. Dod, Licensed Land Surveyor of the State of Texas,

By special act of the Legislature March 1925

do hereby certify that the foregoing survey was made by me on the ground, and according to law; that the limits, boundaries and corners, with the marks, natural and artificial, are truly described in the foregoing Field Notes, just as I found them on the ground; and they are recorded in Book _____, Page _____, Surveyor's Records of said county.

This _____ day of _____ 1924.

James P. Dod

Licensed Land Surveyor.

OK

*F-148979
CORRECT ON MAP FOR 320 ACRES
9-3-47
C. J. Dod
9-10-47
Robert Seaw*

THE STATE OF TEXAS,

DALLAM County.

Survey No. 44

Block C. S.

OK 8-26-40 F.

ORIGINAL FIELD NOTES of a survey of 320 acres of land in DALLAM

County, Texas, made for the permanent public free school fund of the State of Texas by virtue of a final decree in the Fifty-third Judicial District Court, Travis County, Texas, dated the 26th day of April, 1924, in Cause No. 36183, wherein the State of Texas was plaintiff and George P. Findlay and others were defendants and known as the Capitol Syndicate Case. Said land having been appropriated to the permanent public free school fund and survey authorized by Chapter 106, Act of the Regular Session of the 38th Legislature, 1923, Page 222.

(For Supreme Court decision see 250 S. W. Rep., Page 651.)

Situated about 22 miles N 13° 30' W from county seat.

Beginning at

a stake set for the S E corner of survey 21 this Block and the N W corner of Survey 43, for the N E corner of this survey

Thence South 1900.8 varas to a stake set for the S W corner of said survey 43 and the S E corner of this survey

Thence West 1200.95004 varas to a pipe set for the S W corner of this survey and the S E corner of survey 45 this block, marked "S 44"

Thence North 1900.8 varas to a pipe set for the S E corner of survey 20 this block for the N W corner of this survey,

Thence East 950.4 varas

*Validated
8-30-40
Robert Seave*

to the place of beginning.

Chain Carriers

Frank Johnson

Lloyd Anderson.

Surveyed May 1924

by special act of the Legislature March 1925

I, *James P. Dod*, Licensed Land Surveyor of the State of Texas, do hereby

certify that the foregoing survey was made by me on the ground, and according to law; that the limits, boundaries and corners, with the marks, natural and artificial, are truly described in the foregoing Field Notes, just as I found them on the ground; and they are recorded in Book _____, Page _____, Surveyor's Records of said county.

James P. Dod

Licensed Land Surveyor.

This _____ day of _____ 1924.

OK

LAND OFFICE
148985
FIELD NOTES

Filed..... 19.....

.....
Bascom Giles
Commissioner.

.....
French
Clerk.

Approved..... 19.....

.....
Commissioner.

CORRECT ON MAP FOR *320*⁰ ACRES

8-28-40
F.

8-28-40 F.

THE STATE OF TEXAS,

DALLAM County.

Survey No. 45

Block C. S.

O.K. 7-1-40 F.

ORIGINAL FIELD NOTES of a survey of 320 acres of land in DALLAM

County, Texas, made for the permanent public free school fund of the State of Texas by virtue of a final decree in the Fifty-third Judicial District Court, Travis County, Texas, dated the 26th day of April, 1924, in Cause No. 36183, wherein the State of Texas was plaintiff and George P. Findlay and others were defendants and known as the Capitol Syndicate Case. Said land having been appropriated to the permanent public free school fund and survey authorized by Chapter 106, Act of the Regular Session of the 38th Legislature, 1923, Page 222.

(For Supreme Court decision see 250 S. W. Rep., Page 651.)

Situated about 22 miles N 15° W from county seat.

Beginning at

a pipe set for the S E corner of survey 20 this Block, and the NW corner of survey 44 this block, marked "S 20", for the N E corner of this survey,

Thence South 1900.8 varas to a pipe set for the S W corner of survey 44 this block and the S E corner of this survey, marked, "S 44",

Thence West 950.4 varas to a stake set for the S W corner of this survey and the S E corner of Survey 46 this Block.,

Thence North 1900.8 varas to a stake set for the S E corner of Survey 19 this Block, for the N W corner of this Survey,

Thence East 950.4 varas

*Printed
7-1-40
Johnston*

to the place of beginning.

Chain Carriers } Frank Johnson
 } Lloyd Anderson.

Surveyed May 1924.

By Special act of the Legislature March 1925

I, *James P. Dod*, Licensed Land Surveyor of the State of Texas, do hereby

certify that the foregoing survey was made by me on the ground, and according to law; that the limits, boundaries and corners, with the marks, natural and artificial, are truly described in the foregoing Field Notes, just as I found them on the ground; and they are recorded in Book....., Page....., Surveyor's Records of said county.

James P. Dod
Licensed Land Surveyor.

This..... day of..... 1924.

OK

LAND OFFICE
F-148969
FIELD NOTES

Filed..... 19.....

Bascom Giles
Commissioner.

French
Clerk.

Approved..... 19.....

Commissioner.

CORRECT ON MAP FOR 320 ACRES

7-1-40
F.

7-1-40 F.

THE STATE OF TEXAS,

Survey No. 46

DALLAM County.

Block C. S.

ORIGINAL FIELD NOTES of a survey of 320 acres of land in DALLAM

County, Texas, made for the permanent public free school fund of the State of Texas by virtue of a final decree in the Fifty-third Judicial District Court, Travis County, Texas, dated the 26th day of April, 1924, in Cause No. 36183, wherein the State of Texas was plaintiff and George P. Findlay and others were defendants and known as the Capitol Syndicate Case. Said land having been appropriated to the permanent public free school fund and survey authorized by Chapter 106, Act of the Regular Session of the 38th Legislature, 1923, Page 222.

(For Supreme Court decision see 250 S. W. Rep., Page 651.)

Situated about 22 miles N. 15° W. from county seat.

Beginning at

a stake set for the S E corner of survey 19 this block and the NW corner of survey 45, for the N E corner of this Survey,

Thence South 1900.8 varas to a stake set for the S W corner of said survey 45, and the S E corner of this survey,

Thence West 950.4 varas to a pipe set for the S W corner of this survey and the S E corner of survey 47, marked "S46"

Thence North 1900.8 varas to a pipe set for the S E corner of Survey 18, this Block, marked, "S 18", for the N W corner of this Block,

Thence East 950.4 varas

to the place of beginning.

Chain Carriers } Frank Johnson
 } Lloyd Anderson.

Surveyed May 1924.

By special act of the Legislature March 1925.

I, James P. Dod, Licensed Land Surveyor of the State of Texas, do hereby

certify that the foregoing survey was made by me on the ground, and according to law; that the limits, boundaries and corners, with the marks, natural and artificial, are truly described in the foregoing Field Notes, just as I found them on the ground; and they are recorded in Book....., Page....., Surveyor's Records of said county.

James P. Dod
Licensed Land Surveyor.

This.....day of.....1924.

OK

THE STATE OF TEXAS,

Survey No. 47

DALLAM County.

Block C. S.

ORIGINAL FIELD NOTES of a survey of 320 acres of land in DALLAM

County, Texas, made for the permanent public free school fund of the State of Texas by virtue of a final decree in the Fifty-third Judicial District Court, Travis County, Texas, dated the 26th day of April, 1924, in Cause No. 36183, wherein the State of Texas was plaintiff and George P. Findlay and others were defendants and known as the Capitol Syndicate Case. Said land having been appropriated to the permanent public free school fund and survey authorized by Chapter 106, Act of the Regular Session of the 38th Legislature, 1923, Page 222.

(For Supreme Court decision see 250 S. W. Rep., Page 651.)

Situated about 22 miles N 16° 15' W from county seat.

Beginning at

a pipe set for the S E corner of survey 18 this block, and the NW corner of survey 46, marked "S 18", for the N E corner of this Survey,

Thence South 1900.8 varas to a pipe set for the S W corner of said survey 46, and the S E corner of this survey, marked "S 46"

Thence West 950.4 varas to a stake set for the S W corner of this survey and the S E corner of survey 48 this Block,

Thence North 1900.8 varas to a stake set for the S E corner of Survey 17 this Block for the N W corner of this survey,

Thence East 950.4 varas

to the place of beginning.

Chain Carriers } Frank Johnson
} Lloyd Anderson.

Surveyed May 1924.

By special act of the Legislature March 1925

I, James P. Dod, Licensed Land Surveyor of the State of Texas, do hereby certify that the foregoing survey was made by me on the ground, and according to law; that the limits, boundaries and corners, with the marks, natural and artificial, are truly described in the foregoing Field Notes, just as I found them on the ground; and they are recorded in Book, Page, Surveyor's Records of said county.

James P. Dod Licensed Land Surveyor.

This day of 1924.

OK

THE STATE OF TEXAS,
DALLAM County.

Survey No. 48
Block C. S.

ORIGINAL FIELD NOTES of a survey of 318 acres of land in DALLAM

County, Texas, made for the permanent public free school fund of the State of Texas by virtue of a final decree in the Fifty-third Judicial District Court, Travis County, Texas, dated the 26th day of April, 1924, in Cause No. 36183, wherein the State of Texas was plaintiff and George P. Findlay and others were defendants and known as the Capitol Syndicate Case. Said land having been appropriated to the permanent public free school fund and survey authorized by Chapter 106, Act of the Regular Session of the 38th Legislature, 1923, Page 222.

(For Supreme Court decision see 250 S. W. Rep., Page 651.)

Situated about 22 miles N16°15'W from county seat.

Beginning at

a stake set for the S E corner of Survey 17 this block and the NW corner of Survey 47, for the N E corner of this survey,

Thence South 1900.8 varas to a stake set for the S W corner of Survey 47, and the S E corner of this survey,

Thence West 942.5 varas to a pipe set under Partition Line Fence for the S W corner of this survey and the N W corner of survey 49, this block, marked "S 48"

Thence N 0°08'W 1900.8 varas ~~to a pipe set~~ with said fence to a pipe set for the S W corner of Survey 17 this Block for the N W corner of this survey, Marked "S 17",

Thence East 946.5 varas

to the place of beginning.

Chain Carriers } Frank Johnson
 } Lloyd Anderson.

Surveyed May, 1924.

I, James P. Dod, *by special act of the Legislature March 1925* Licensed Land Surveyor of the State of Texas, do hereby certify that the foregoing survey was made by me on the ground, and according to law; that the limits, boundaries and corners, with the marks, natural and artificial, are truly described in the foregoing Field Notes, just as I found them on the ground; and they are recorded in Book _____, Page _____, Surveyor's Records of said county.

This _____ day of _____ 1924.

James P. Dod
Licensed Land Surveyor.

OK

THE STATE OF TEXAS,

Survey No. 49

DALLAM County.

Block C. S.

D.K. 7-10-40 French

ORIGINAL FIELD NOTES of a survey of 316.5 acres of land in DALLAM

County, Texas, made for the permanent public free school fund of the State of Texas by virtue of a final decree in the Fifty-third Judicial District Court, Travis County, Texas, dated the 26th day of April, 1924, in Cause No. 36183, wherein the State of Texas was plaintiff and George P. Findlay and others were defendants and known as the Capitol Syndicate Case. Said land having been appropriated to the permanent public free school fund and survey authorized by Chapter 106, Act of the Regular Session of the 38th Legislature, 1923, Page 222.

(For Supreme Court decision see 250 S. W. Rep., Page 651.)

Situated about 21 miles N 17° 30' W from county seat.

Beginning at

a pipe set under Partition Fence for the S W corner of Survey 48 this block and the N W corner of this survey marked "S 48",

Thence East 942.5 varas to a stake set for the S W corner of Survey 47 this Block for the N E corner of this survey,

Thence South 1900.8 varas to a stake set for the S E corner of this Survey and the S W corner of survey 50 this block,

Thence West 938.5 varas to a pipe set under said partition line fence for the S W corner of this survey and the N W corner of Survey 80 this block, marked "S 49",

Thence N 0° 08' W 1900.8 varas with said fence

*Patented 7-27-40
J. Johnson*

to the place of beginning.

Chain Carriers } Frank Johnson
 } Lloyd Anderson

Surveyed May 1924.

By special act of the Legislature March 1925

I, James P. Dod, Licensed Land Surveyor of the State of Texas, do hereby

certify that the foregoing survey was made by me on the ground, and according to law; that the limits, boundaries and corners, with the marks, natural and artificial, are truly described in the foregoing Field Notes, just as I found them on the ground; and they are recorded in Book _____, Page _____, Surveyor's Records of said county.

James P. Dod
Licensed Land Surveyor.

This _____ day of _____ 1924.

OK

LAND OFFICE
F - 148964
FIELD NOTES

Filed 19

Bascom Giles
Commissioner

French
Clerk

Approved 19

Commissioner

CORRECT ON MAP FOR 316⁵ ACRES

7-10-40
F.

7-10-40 F.

ORIGINAL FIELD NOTES of a survey of ...
County, Texas made for the permanent public land of the State of Texas by virtue of a grant ...
in the Fifth Judicial District Court, Travis County, Texas, dated the 20th day of April, 1884, in ...
No. 2010, wherein the State of Texas was plaintiff and George F. Kinney and others were defendants and
known as the Capital Grounds Case. Said land having been appropriated to the permanent public land ...
land and survey authorized by Chapter 106, Act of the Regular Session of the 34th Legislature, 1883, Page 122.
For Reference Court Session see 230 S. W. Rep. Page 611.
Situated about 1/2 mile N. 1/2 Sec. 30, T. 10 N., R. 40 E., 1st ...
Beginning at
a line set under Section 106 for the S. W. corner of survey 40 ...
block and the N. W. corner of this survey marked "B 40".
Thence East 500.00 feet to a stake set for the S. W. corner of survey
47 this block for the N. E. corner of this survey,
Thence South 100.00 feet to a stake set for the S. E. corner of this
survey and the S. W. corner of survey 50 this block,
Thence West 500.00 feet to a stake set which said position line
force for the S. W. corner of this survey and the N. W. corner of survey
50 this block, marked "B 40".
Thence N. 100.00 feet with said fence

THE STATE OF TEXAS,

Survey No. 50

DALLAM County.

Block C. S.

*O.K. for 320 ac.
7-10-40 French*

ORIGINAL FIELD NOTES of a survey of 320 acres of land in DALLAM

County, Texas, made for the permanent public free school fund of the State of Texas by virtue of a final decree in the Fifty-third Judicial District Court, Travis County, Texas, dated the 26th day of April, 1924, in Cause No. 36183, wherein the State of Texas was plaintiff and George P. Findlay and others were defendants and known as the Capitol Syndicate Case. Said land having been appropriated to the permanent public free school fund and survey authorized by Chapter 106, Act of the Regular Session of the 38th Legislature, 1923, Page 222.

(For Supreme Court decision see 250 S. W. Rep., Page 651.)

Situated about 21 miles N17°30'W from county seat.

Beginning at

a stake set for the S W corner of Survey 47 this block and the NE corner of survey 49 this block, for the N W corner of this survey,

Thence East 950.4 varas to a pipe set for the S W corner of Survey 46 this block, marked "S 46", for the N E corner of this survey,

Thence South 1900.8 varas to a pipe set for the S E corner of this survey and the S W corner of survey 51 this block, marked "S 50",

Thence West 950.4 varas to a stake set for the S E corner of Survey 49 this Block and the S W corner of this survey,

Thence North 1900.8 varas to

*Patented
7-22-40
Anderson*

to the place of beginning.

Chain Carriers } Frank Johnson
Lloyd Anderson.

Surveyed May 1924.

I, James P. Dod, *By special act of the Legislature March 1925* Licensed Land Surveyor of the State of Texas, do hereby

certify that the foregoing survey was made by me on the ground, and according to law; that the limits, boundaries and corners, with the marks, natural and artificial, are truly described in the foregoing Field Notes, just as I found them on the ground; and they are recorded in Book _____, Page _____, Surveyor's Records of said county.

James P. Dod
Licensed Land Surveyor.

This _____ day of _____ 1924.

OK

ORIGINAL FIELD NOTES of a survey of 320 1/2 acres in Dallas

County, Texas, made for the purpose of the purchase of the land of the State of Texas by virtue of a land grant in the first half of the year 1847. The survey was made by the Surveyor General of Texas, and the same was confirmed by the State of Texas in the year 1850. The survey was made by the Surveyor General of Texas, and the same was confirmed by the State of Texas in the year 1850. The survey was made by the Surveyor General of Texas, and the same was confirmed by the State of Texas in the year 1850.

(For Supreme Court decision see 250 S. W. Rep. 152-153)

Block 2, Survey No. 50, Dallas County, Texas

Beginning at

a stake set for the S.W. corner of survey 47 this block and the NW corner of survey 48 this block, for the S.W. corner of this survey,

thence East 95.0, 4 rods to a pipe set for the S.W. corner of survey 48 this block, marked "S 48", for the S.W. corner of this survey,

thence South 120.0, 8 rods to a pipe set for the S.W. corner of this survey and the S.W. corner of survey 48 this block, marked "S 48",

thence West 85.0, 4 rods to a stake set for the S.W. corner of survey 49 this block and the S.W. corner of this survey,

thence North 120.0, 8 rods to

LAND OFFICE
F-148970
FIELD NOTES

Filed 19

Boscom Giles
Commissioner

French
Clerk

Approved 19

Commissioner

CORRECT ON MAP FOR 320 1/2 ACRES

7-10-40
F

7-10-40 F

THE STATE OF TEXAS,

Survey No. 51

DALLAM County.

Block C. S.

ORIGINAL FIELD NOTES of a survey of 320 acres of land in DALLAM

County, Texas, made for the permanent public free school fund of the State of Texas by virtue of a final decree in the Fifty-third Judicial District Court, Travis County, Texas, dated the 26th day of April, 1924, in Cause No. 36183, weherin the State of Texas was plaintiff and George P. Findlay and others were defendants and known as the Capitol Syndicate Case. Said land having been appropriated to the permanent public free school fund and survey authorized by Chapter 106, Act of the Regular Session of the 38th Legislature, 1923, Page 222.

(For Supreme Court decision see 250 S. W. Rep., Page 651.)

Situated about 21 miles N 12° 30' W from county seat.

Beginning at

a pipe set for the S W corner of survey 46 this block and the N E corner of Survey 50 ~~thi~~, marked "S 46", for the N W corner of this survey, ~~th~~

Thence East 950.4 varas to a stake set for the S W corner of survey 45 this block for the N E corner of this survey,

Thence South 1900.8 varas to a stake set for the S E corner of this survey and the S W corner of ~~this~~ Survey 52 this block,

Thence West 950.4 varas to a pipe set for the S E corner of Survey 50 this Block and the S W corner of this survey, marked "S 50",

Thence North 1900.8 varas

148953
CORRECT ON MAP FOR 320 ACRES
11/19/52 HF
12/8/52 VES
Patented
12-22-52
Anderson

to the place of beginning.

Chain Carriers } Frank Johnson
Lloyd Anderson.

Surveyed May 1924.

I, James P. Dod, Licensed Land Surveyor of the State of Texas, do hereby

certify that the foregoing survey was made by me on the ground, and according to law; that the limits, boundaries and corners, with the marks, natural and artificial, are truly described in the foregoing Field Notes, just as I found them on the ground; and they are recorded in Book, Page, Surveyor's Records of said county.

This day of 1924.

James P. Dod
Licensed Land Surveyor.

THE STATE OF TEXAS,

Survey No. 52

DALLAM County.

Block C. S.

ORIGINAL FIELD NOTES of a survey of 320 acres of land in DALLAM

County, Texas, made for the permanent public free school fund of the State of Texas by virtue of a final decree in the Fifty-third Judicial District Court, Travis County, Texas, dated the 26th day of April, 1924, in Cause No. 36183, weherin the State of Texas was plaintiff and George P. Findlay and others were defendants and known as the Capitol Syndicate Case. Said land having been appropriated to the permanent public free school fund and survey authorized by Chapter 106, Act of the Regular Session of the 38th Legislature, 1923, Page 222.

(For Supreme Court decision see 250 S. W. Rep., Page 651.)

Situated about 21 miles N 15°30'W from county seat.

Beginning at

a stake set for the S W corner of survey 45 this block and the N E corner of survey 51 this block for the N W corner this survey,

Thence East 950.4 varas to a pipe set for the S W corner of Survey 44 this Block ~~and~~ marked "S 44", for the N E corner of this survey,

Thence South 1900.8 varas to a pipe set for the S E corner of this survey and the S W corner of survey 53 this block, marked "S 52",

Thence West 950.4 varas to a stake set for the S E corner of survey 51 this block and the S W corner of this survey,

Thence North 1900.8 varas

*Calculated
7-2-24
Anderson*

to the place of beginning.

Chain Carriers } Frank Johnson
 } Lloyd Anderson

Surveyed May 1924.

By special act of the legislature march 1925.

I, James P. Dod, Licensed Land Surveyor of the State of Texas,

do hereby certify that the foregoing survey was made by me on the ground, and according to law; that the limits, boundaries and corners, with the marks, natural and artificial, are truly described in the foregoing Field Notes, just as I found them on the ground; and they are recorded in Book _____, Page _____, Surveyor's Records of said county.

James P. Dod

This _____ day of _____ 1924.

Licensed Land Surveyor.

OK

File No. 148965
Dallam County

School Land
Field Notes

Filed _____, 19____
BASCUM GILES, Cem'r

File Clerk

Correct on Map for 320 Acres
7-3-1939 *Atty.*

LAND OFFICE
FIELD NOTES

Filed.....19.....

Commissioner.

Clerk.

Approved.....19.....

Commissioner.

THE STATE OF TEXAS,

Survey No. 53

DALLAM County.

Block C. S.

ORIGINAL FIELD NOTES of a survey of 320 acres of land in DALLAM

County, Texas, made for the permanent public free school fund of the State of Texas by virtue of a final decree in the Fifty-third Judicial District Court, Travis County, Texas, dated the 26th day of April, 1924, in Cause No. 36183, wherein the State of Texas was plaintiff and George P. Findlay and others were defendants and known as the Capitol Syndicate Case. Said land having been appropriated to the permanent public free school fund and survey authorized by Chapter 106, Act of the Regular Session of the 38th Legislature, 1923, Page 222.

(For Supreme Court decision see 250 S. W. Rep., Page 651.)

Situated about 21 miles N 14° W from county seat.

Beginning at

a pipe set for the S W corner of survey 44 this block and the N E corner of Survey 52 this block, marked "S 44", for the N W corner of this survey,

Thence East 950.4 varas to a stake set for the S W corner of survey 43 this block, for the N E corner of this survey,

Thence South 1900.8 varas to a stake set for the S E corner of this survey and the S W corner of survey 54,

Thence West 950.4 varas to a pipe set for the S E corner of Survey 52 this block and the S W corner of this survey, marked "S 52",

Thence North 1900.8 varas

F-148980
CORRECT ON MAP FOR 320 ACRES
9-3-47
Patented 9-10-47
Robt. Jean

to the place of beginning.

Chain Carriers } Frank Johnson
 } Lloyd Anderson

Surveyed May 1924.

By special act of the Legislature March 1925.

I, James P. Dod, Licensed Land Surveyor of the State of Texas, do hereby certify that the foregoing survey was made by me on the ground, and according to law; that the limits, boundaries and corners, with the marks, natural and artificial, are truly described in the foregoing Field Notes, just as I found them on the ground; and they are recorded in Book....., Page....., Surveyor's Records of said county.

James P. Dod
Licensed Land Surveyor.

This day of 1924.

OK

THE STATE OF TEXAS,

Survey No. 54

DALLAM County.

Block C. S.

ORIGINAL FIELD NOTES of a survey of 320 acres of land in DALLAM

County, Texas, made for the permanent public free school fund of the State of Texas by virtue of a final decree in the Fifty-third Judicial District Court, Travis County, Texas, dated the 26th day of April, 1924, in Cause No. 36183, wherein the State of Texas was plaintiff and George P. Findlay and others were defendants and known as the Capitol Syndicate Case. Said land having been appropriated to the permanent public free school fund and survey authorized by Chapter 106, Act of the Regular Session of the 38th Legislature, 1923, Page 222.

(For Supreme Court decision see 250 S. W. Rep., Page 651.)

Situated about 21 miles N 14° W from county seat.

Beginning at

a stake set for the S W corner of survey 43 this block and the N E corner of Survey 53 this block for the N W corner of this survey,

Thence East 950.4 varas to a pipe set for the S W corner of Survey 42 this block, marked "S42", for the N E corner of this survey,

Thence South 1900.8 varas to a pipe set for the S E corner of this survey and the S W corner of survey 55 this block, marked "S 54",

Thence West 950.4 varas to a stake set for the S E corner of survey 53 this block and the S W corner of this survey,

Thence North 1900.8 varas

F-148981
CORRECT ON MAP FOR 320 ACRES
9-3-47
Patented 9-10-47
Robustean

to the place of beginning.

Chain Carriers } Frank Johnson
 } Lloyd Anderson

Surveyed May, 1924.

By Special act of the Legislative March 1925.

I, James P. Dod, Licensed Land Surveyor of the State of Texas, do hereby

certify that the foregoing survey was made by me on the ground, and according to law; that the limits, boundaries and corners, with the marks, natural and artificial, are truly described in the foregoing Field Notes, just as I found them on the ground; and they are recorded in Book....., Page....., Surveyor's Records of said county.

James P. Dod
Licensed Land Surveyor.

This..... day of..... 1924.

OK

THE STATE OF TEXAS,

Survey No. 55

DALLAM County.

Block C. S.

ORIGINAL FIELD NOTES of a survey of 320 acres of land in DALLAM

County, Texas, made for the permanent public free school fund of the State of Texas by virtue of a final decree in the Fifty-third Judicial District Court, Travis County, Texas, dated the 26th day of April, 1924, in Cause No. 36183, wherein the State of Texas was plaintiff and George P. Findlay and others were defendants and known as the Capitol Syndicate Case. Said land having been appropriated to the permanent public free school fund and survey authorized by Chapter 106, Act of the Regular Session of the 38th Legislature, 1923, Page 222.

(For Supreme Court decision see 250 S. W. Rep., Page 651.)

Situated about 21 miles N 8° W from county seat.

Beginning at

a pipe set for the S W corner of survey 42 this block and the N E corner of survey 54 this block, marked "S 42", for the N W corner of this survey,

Thence East 950.4 varas to a stake set for the S W corner of survey 41 this block for the NE corner of this survey,

Thence South 1900.8 varas to a stake set for the S E corner of this survey and the S W corner of survey 56 this block,

Thence West 950.4 varas to a pipe set for the S E corner of Survey 54 this block and the S W corner of this survey, marked "S 54",

Thence North 1900.8 varas

to the place of beginning.

Chain Carriers } Frank Johnson
Lloyd Anderson

Surveyed May 1924.

By special act of the Legislative March 1925

I, James P. Dod, Licensed Land Surveyor of the State of Texas, do hereby

certify that the foregoing survey was made by me on the ground, and according to law; that the limits, boundaries and corners, with the marks, natural and artificial, are truly described in the foregoing Field Notes, just as I found them on the ground; and they are recorded in Book, Page, Surveyor's Records of said county.

James P. Dod Licensed Land Surveyor.

This day of 1924.

OK

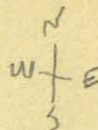
THE STATE OF TEXAS,

Survey No. 56

DALLAM County.

Block C. S.

*OK for 320 AC
7-20-40 French*



ORIGINAL FIELD NOTES of a survey of 320 acres of land in DALLAM

County, Texas, made for the permanent public free school fund of the State of Texas by virtue of a final decree in the Fifty-third Judicial District Court, Travis County, Texas, dated the 26th day of April, 1924, in Cause No. 36183, wherein the State of Texas was plaintiff and George P. Findlay and others were defendants and known as the Capitol Syndicate Case. Said land having been appropriated to the permanent public free school fund and survey authorized by Chapter 106, Act of the Regular Session of the 38th Legislature, 1923, Page 222.

(For Supreme Court decision see 250 S. W. Rep., Page 651.)

Situated about 20.5 miles N 8° W from county seat.

Beginning at

a stake set for the S W corner of survey 41 this block and the N E corner of survey 55 this block, for the N W corner of this survey,

Thence East 950.4 varas to a pipe set for the S W corner of Survey 40 this block, marked "S 40", for the N E corner of this survey,

Thence South at about 950 varas center of lake, on 1900.8 varas in all to a pipe set for the S E corner of this survey and the S W corner of survey 57 this block marked "S 56",

Thence West 950.4 varas to a stake set for the S E corner of survey 55 this block and the S W corner of this survey,

Thence North 1900.8 varas

*Retrieved
7-22-40
Johnston*

to the place of beginning.

Chain Carriers } Frank Johnson
 } Lloyd Anderson.

Surveyed May, 1924.

By special act of the Legislature March 1925

I, James P. Dod, Licensed Land Surveyor of the State of Texas, do hereby

certify that the foregoing survey was made by me on the ground, and according to law; that the limits, boundaries and corners, with the marks, natural and artificial, are truly described in the foregoing Field Notes, just as I found them on the ground; and they are recorded in Book _____, Page _____, Surveyor's Records of said county.

James P. Dod
Licensed Land Surveyor.

This _____ day of _____, 1924.

OK

LAND OFFICE
F-148966
FIELD NOTES

Filed..... 19.....

Bascom Giles
Commissioner.

French
Clerk.

Approved..... 19.....

Commissioner.

CORRECT ON MAP FOR 320⁰ ACRES

7-20-40
F

Σ 7-20-40 F.

THE STATE OF TEXAS,

Survey No. 57

DALLAM County.

Block C. S.

ORIGINAL FIELD NOTES of a survey of 320 acres of land in DALLAM

County, Texas, made for the permanent public free school fund of the State of Texas by virtue of a final decree in the Fifty-third Judicial District Court, Travis County, Texas, dated the 26th day of April, 1924, in Cause No. 36183, wherein the State of Texas was plaintiff and George P. Findlay and others were defendants and known as the Capitol Syndicate Case. Said land having been appropriated to the permanent public free school fund and survey authorized by Chapter 106, Act of the Regular Session of the 38th Legislature, 1923, Page 222.

(For Supreme Court decision see 250 S. W. Rep., Page 651.)

Situated about 20.2 miles N 5° W from county seat.

Beginning at

a pipe set for the S W corner of survey 40 this block and the N E corner of survey 56, marked "S 40", for the N W corner of this survey,

Thence East 950.4 varas to a stake set for the S W corner of survey 39, this block, for the N E corner this survey,

Thence South 1900.8 varas to a stake set for the S E corner of this survey and the S W corner of survey 58, this block,

Thence West 950.4 varas to a pipe set for the S E corner survey 56, this block, marked "S 56", for the S W corner of this survey, from which a windmill bears N 35° 40' E 1294 varas,

Thence North at about 950 varas center of lake, on 1900.8 varas in all,

148954
CORRECT ON MAP FOR 320 ACRES
11/19/52 HF
12/8/52 VES
Patented
12-22-52
Robertson

to the place of beginning.

Chain Carriers } Frank Johnson
 } Lloyd Anderson

Surveyed May 1924.

I, James P. Dod by special act of the Legislature March 1925, Licensed Land Surveyor of the State of Texas, do hereby

certify that the foregoing survey was made by me on the ground, and according to law; that the limits, boundaries and corners, with the marks, natural and artificial, are truly described in the foregoing Field Notes, just as I found them on the ground; and they are recorded in Book _____, Page _____, Surveyor's

Records of said county.

James P. Dod

Licensed Land Surveyor.

This _____ day of _____ 1924.

OK

THE STATE OF TEXAS,
DALLAM County.

Survey No. 59
Block C. S.

*OK - 316.4 Acres
F 4748960 59
CORRECT ON MAP FOR 316.4 ACRES
12-4-1941*

ORIGINAL FIELD NOTES of a survey of 316.4 acres of land in DALLAM

County, Texas, made for the permanent public free school fund of the State of Texas by virtue of a final decree in the Fifty-third Judicial District Court, Travis County, Texas, dated the 26th day of April, 1924, in Cause No. 36183, wherein the State of Texas was plaintiff and George P. Findlay and others were defendants and known as the Capitol Syndicate Case. Said land having been appropriated to the permanent public free school fund and survey authorized by Chapter 106, Act of the Regular Session of the 38th Legislature, 1923, Page 222.

(For Supreme Court decision see 250 S. W. Rep., Page 651.)

Situated about 20.2 miles N 2°45'W from county seat.

Beginning at

a pipe ~~set~~ in east side of the Dalhart to Boise City Lane, set for the S W corner of survey 38 this block and the N W corner of this survey, marked "S 38", from which a pipe in west line of said lane set for the S E corner of survey 39 and the N E corner of Survey 58, marked "S 39" bears west 21.6 varas,

Thence East 939.6 varas to a stake set for the S W corner of survey 37 this block for the N E corner of this survey,

Thence South 1900.8 varas to a stake set for the S E corner of this survey and the S W corner of survey 60 this block,

Thence West 939.6 varas to a pipe in east line lane, set for the SW corner of this survey and the N W corner of survey 70 this block, marked "S 59", from which a pipe on west side of lane set for the S E corner of survey 58 and the N E corner of survey 7E this block marked "S 58", bears west 21.6 varas,

Thence North 1900.8 varas with said lane

to the place of beginning.

Chain Carriers } Frank Johnson
 } Lloyd Anderson.

Surveyed May 1924.

By special act of the Legislature March 1925.

I, *James P. Dod*, Licensed Land Surveyor of the State of Texas, do hereby certify that the foregoing survey was made by me on the ground, and according to law; that the limits, boundaries and corners, with the marks, natural and artificial, are truly described in the foregoing Field Notes, just as I found them on the ground; and they are recorded in Book _____, Page _____, Surveyor's Records of said county.

This _____ day of _____ 1924.

James P. Dod
Licensed Land Surveyor.

THE STATE OF TEXAS,

Survey No. 60

DALLAM County.

Block C. S.

ORIGINAL FIELD NOTES of a survey of 320 acres of land in DALLAM

County, Texas, made for the permanent public free school fund of the State of Texas by virtue of a final decree in the Fifty-third Judicial District Court, Travis County, Texas, dated the 26th day of April, 1924, in Cause No. 36183, wherein the State of Texas was plaintiff and George P. Findlay and others were defendants and known as the Capitol Syndicate Case. Said land having been appropriated to the permanent public free school fund and survey authorized by Chapter 106, Act of the Regular Session of the 38th Legislature, 1923, Page 222.

(For Supreme Court decision see 250 S. W. Rep., Page 651.)

Situated about 20.2 miles N 2°45'W from county seat.

Beginning at

a stake set for the S W corner of Survey 37 this block and the N E corner of survey 59 this block, ~~for~~ the N W corner of this survey,

Thence East 950.4 varas to a pipe set for the S W corner of survey 36 this block, marked "S 36", for the N E corner of this survey,

Thence South 1900.8 varas to a pipe set for the S E corner of this Survey and the S W corner of Survey 61 this block, marked "S 60"

Thence West 950.4 varas to a stake set for the S E corner of survey 59 this block and the S W corner this survey,

Thence North 1900.8 varas

to the place of beginning.

Chain Carriers } Frank Johnson
 } Lloyd Anderson.

Surveyed May 1924.

I, James P. Dod *By special act of the Legislature March 1925* Licensed Land Surveyor of the State of Texas, do hereby

certify that the foregoing survey was made by me on the ground, and according to law; that the limits, boundaries and corners, with the marks, natural and artificial, are truly described in the foregoing Field Notes, just as I found them on the ground; and they are recorded in Book....., Page....., Surveyor's Records of said county.

James P. Dod
Licensed Land Surveyor.

This.....day of.....1924.

OC

THE STATE OF TEXAS,

Survey No. 61

61

DALLAM County.

Block C. S.

ORIGINAL FIELD NOTES of a survey of 320 acres of land in DALLAM

County, Texas, made for the permanent public free school fund of the State of Texas by virtue of a final decree in the Fifty-third Judicial District Court, Travis County, Texas, dated the 26th day of April, 1924, in Cause No. 36183, wherein the State of Texas was plaintiff and George P. Findlay and others were defendants and known as the Capitol Syndicate Case. Said land having been appropriated to the permanent public free school fund and survey authorized by Chapter 106, Act of the Regular Session of the 38th Legislature, 1923, Page 222.

(For Supreme Court decision see 250 S. W. Rep., Page 651.)

Situated about 20 miles North from county seat.

Beginning at

at a ~~pipe~~ set for the S W corner of survey 36 this block and the N E corner of Survey ~~60~~ 60 this Block, marked "S 36", for the N W corner of this survey

Thence East 950.4 varas to a stake set for the S W corner of Survey 35 this block for the N E corner of this survey,

Thence South 1900.8 varas to a stake set for the S E corner of this survey and the S W corner of Survey 62 this sblock,

Thence West 950.4 varas to a pipe set for the S E corner of Survey 60 this block and the S W corner of this survey, marked "S 60",

Thence North 1900.8 varas

File # 148859

CORRECT ON MAP FOR 320 ACRES
1/3/38 Leske

*Patented
2-18-38
Robertson
6K
12/21/37
Leslie*

to the place of beginning.

Chain Carriers } Frank Johnson
 } Lloyd Anderson.

Surveyed May 1924.

By Special Act of the Legislature March 1926.

I, James P. Dod, Licensed Land Surveyor of the State of Texas,

do hereby certify that the foregoing survey was made by me on the ground, and according to law; that the limits, boundaries and corners, with the marks, natural and artificial, are truly described in the foregoing Field Notes, just as I found them on the ground; and they are recorded in Book....., Page....., Surveyor's Records of said county.

This..... day of..... 1924.

James P. Dod
Licensed Land Surveyor.

07c

THE STATE OF TEXAS,

DALLAM

County.

Survey No. 62

Block C. S.

62

ORIGINAL FIELD NOTES of a survey of 320 acres of land in DALLAM

County, Texas, made for the permanent public free school fund of the State of Texas by virtue of a final decree in the Fifty-third Judicial District Court, Travis County, Texas, dated the 26th day of April, 1924, in Cause No. 36183, wherein the State of Texas was plaintiff and George P. Findlay and others were defendants and known as the Capitol Syndicate Case. Said land having been appropriated to the permanent public free school fund and survey authorized by Chapter 106, Act of the Regular Session of the 38th Legislature, 1923, Page 222.

(For Supreme Court decision see 250 S. W. Rep., Page 651.)

Situated about 20 miles North from county seat.

Beginning at

a stake set for the S W corner of survey 35 this block and the N E corner of survey 61 this block, for the N W corner of this survey,

Thence East 950.4 varas to a pipe set for the S W corner of survey 34 this block, marked "S 34", for the N E corner of this survey,

Thence South 1900.8 varas to a pipe set for the S E corner of this survey and the S W corner of survey 63 this block, marked "S 62",

Thence West 950.4 varas to a stake set for the S E corner of survey 61 this block and the S W corner of this survey,

Thence North 1900.8 varas

File 148860
CORRECT ON MAP FOR 320 ACRES
1/6/38
Leslie

Patented
2-18-38
Robertson

to the place of beginning.

Chain Carriers

Frank Johnson

Lloyd Anderson

Surveyed May 1924.

I, James P. Dod

By special act of the legislature March 1925.

Licensed Land Surveyor of the State of Texas,

do hereby certify that the foregoing survey was made by me on the ground, and according to law; that the limits, boundaries and corners, with the marks, natural and artificial, are truly described in the foregoing Field Notes, just as I found them on the ground; and they are recorded in Book....., Page....., Surveyor's Records of said county.

James P. Dod

Licensed Land Surveyor.

This.....day of.....1924.

63
63

THE STATE OF TEXAS,

Survey No. 63

DALLAM County.

Block C. S.

ORIGINAL FIELD NOTES of a survey of 320 acres of land in DALLAM

County, Texas, made for the permanent public free school fund of the State of Texas by virtue of a final decree in the Fifty-third Judicial District Court, Travis County, Texas, dated the 26th day of April, 1924, in Cause No. 36183, wherein the State of Texas was plaintiff and George P. Findlay and others were defendants and known as the Capitol Syndicate Case. Said land having been appropriated to the permanent public free school fund and survey authorized by Chapter 106, Act of the Regular Session of the 38th Legislature, 1923, Page 222.

(For Supreme Court decision see 250 S. W. Rep., Page 651.)

Situated about 20 miles N 3° E from county seat.

Beginning at

a pipe set for the S W corner of survey 34 this block and the N E corner of survey 62 this block, marked "S 34", for the N W corner of this survey,

Thence East 950.4 varas to a stake set for the S W corner of survey 33 this block, for the N E corner of this survey,

Thence South 1900.8 varas to a stake set for the S E corner of this survey and the S W corner of Survey 64 this block,

Thence West 950.4 varas to a pipe set for the S E corner of survey 62 this block and the S W corner of this survey, marked "S 62",

Thence North 1900.8 varas

F-148912
CORRECT ON MAP FOR 320 ACRES
11-8-1941
Woodland
Patented
11-13-41
Robertson

File 148912
OK 320 ac
10-23-41
J.C.W.

to the place of beginning.

Chain Carriers } Frank Johnson
Lloyd Anderson

Surveyed May 1924.

By special act of the Legislature March 1925.

I, James P. Dod, Licensed Land Surveyor of the State of Texas, do hereby

certify that the foregoing survey was made by me on the ground, and according to law; that the limits, boundaries and corners, with the marks, natural and artificial, are truly described in the foregoing Field Notes, just as I found them on the ground; and they are recorded in Book _____, Page _____, Surveyor's Records of said county.

James P. Dod

This _____ day of _____ 1924.

Licensed Land Surveyor.

WTC

File No. 148912

DALLAM County

School Land
Field Notes

Filed..... 19
Com'r

File Clerk
Correct on Map for 320 Acres
11-8-41
J.L.M.

LAND OFFICE
FIELD NOTES

Filed..... 19

Commissioner.

Clerk.

Approved..... 19

Commissioner.

THE STATE OF TEXAS,

Survey No. 64

64
64

DALLAM County.

Block C. S.

ORIGINAL FIELD NOTES of a survey of 320 acres of land in DALLAM

County, Texas, made for the permanent public free school fund of the State of Texas by virtue of a final decree in the Fifty-third Judicial District Court, Travis County, Texas, dated the 26th day of April, 1924, in Cause No. 36183, wherein the State of Texas was plaintiff and George P. Findlay and others were defendants and known as the Capitol Syndicate Case. Said land having been appropriated to the permanent public free school fund and survey authorized by Chapter 106, Act of the Regular Session of the 38th Legislature, 1923, Page 222.

(For Supreme Court decision see 250 S. W. Rep., Page 651.)

Situated about 20 miles N 3° E from county seat.

Beginning at

a stake set for the S W corner survey 33 this block, and the N E corner of survey 63, for the N W corner of this survey,

Thence East 950.4 varas to a pipe set for the S E corner said survey 33, and the N E corner of this survey, marked "S 33", and set in the Partition Line, from which the S E corner League No. 40, bears N 70° 12' W 494 varas,

Thence South 1900.8 varas with said Partition Line to a pipe set for the S E corner of this survey and the N E corner survey 65 this block, marked "S 64",

Thence West 950.4 varas to a stake set for the S E corner survey 63 this block, and the S W corner this survey,

Thence North 1900.8 varas,

F-148913
CORRECT ON MAP FOR 320 ACRES
11-8-1941
Woodland

File 148913
OK 320 ac
10-27-41
J.W.

Patented
11-12-41
Robertson

to the place of beginning.

Chain Carriers } Frank Johnson
 } Lloyd Anderson

Surveyed May 1924.

I, James P. Dod, By special act of the Legislature March 1925, Licensed Land Surveyor of the State of Texas,

do hereby certify that the foregoing survey was made by me on the ground, and according to law; that the limits, boundaries and corners, with the marks, natural and artificial, are truly described in the foregoing Field Notes, just as I found them on the ground; and they are recorded in Book _____, Page _____, Surveyor's Records of said county.

This _____ day of _____ 1924.

James P. Dod
Licensed Land Surveyor.

THE STATE OF TEXAS,

Survey No. 65

DALLAM County.

Block C. S.

ORIGINAL FIELD NOTES of a survey of 259.8 acres of land in DALLAM

County, Texas, made for the permanent public free school fund of the State of Texas by virtue of a final decree in the Fifty-third Judicial District Court, Travis County, Texas, dated the 26th day of April, 1924, in Cause No. 36183, weherin the State of Texas was plaintiff and George P. Findlay and others were defendants and known as the Capitol Syndicate Case. Said land having been appropriated to the permanent public free school fund and survey authorized by Chapter 106, Act of the Regular Session of the 38th Legislature, 1923, Page 222.

(For Supreme Court decision see 250 S. W. Rep., Page 651.)

Situated about 20 miles N 32E from county seat.

Beginning at

a pipe set for the S E corner of Survey 64 this block and the N E corner of this survey, marked "S 64 and set in the Partition Line,

Thence South 1491.5 varas to a Conctete Monument 3 feet Long set 2 feet in the ground, in the NBL of Survey 69, H&TC RY. CD. Block 49 1/2 for a corner of this survey , set at a corner in the line of Parti-tion.,

Thence S 89°20'W 721 varas with the North line of said survey 69 and the line of Partition to the N W corner of said survey 69 , to a con-crete monument 3 feet long set 2 feet in the ground for a corner of this survey,

Thence S 0°40'E 554 varas with the west line said survey 69 and the line of Partition to a Concrete Monument 3 feet long set 2 feet in the ground , for a corner of this survey,

Thence S 89°26'W 236 varas with a fence on said line of Partition to a pipe set for the S W corner of this survey and the S E corner of Survey 66 this block, marked "S 65",

Thence North 1965.4 varas to a stake set for the S E corner of survey 63 this block, for the N W corner of this survey,

Thence East 950.4 varas

*Patented
9-26-40
Robertson*

to the place of beginning.

Chain Carriers } Frank Johnson
 } Lloyd Anderson

Surveyed May 1924.

By special act of the legislature March 1925

I, *James P. Dod*, Licensed Land Surveyor of the State of Texas, do hereby

certify that the foregoing survey was made by me on the ground, and according to law; that the limits, boundaries and corners, with the marks, natural and artificial, are truly described in the foregoing Field Notes, just as I found them on the ground; and they are recorded in Book....., Page....., Surveyor's Records of said county.

James P. Dod
Licensed Land Surveyor.

This.....day of.....1924.

HC

LAND OFFICE
F-148948
FIELD NOTES

Filed..... 19.....

Boscom Giles
Commissioner.

French
Clerk

Approved..... 19.....

Commissioner.

CORRECT ON MAP FOR 331-⁵ACHES

7-10-40
F.

7-10-40 F.

THE STATE OF TEXAS,

DALLAM

County.

Survey No. 68

Block C. S.

OK. for 332.5 ac.
1-10-40
French

ORIGINAL FIELD NOTES of a survey of 332.5 acres of land in DALLAM

County, Texas, made for the permanent public free school fund of the State of Texas by virtue of a final decree in the Fifty-third Judicial District Court, Travis County, Texas, dated the 26th day of April, 1924, in Cause No. 36183, wherein the State of Texas was plaintiff and George P. Findlay and others were defendants and known as the Capitol Syndicate Case. Said land having been appropriated to the permanent public free school fund and survey authorized by Chapter 106, Act of the Regular Session of the 38th Legislature, 1923, Page 222.

(For Supreme Court decision see 250 S. W. Rep., Page 651.)

Situated about 19.2 miles North from county seat.

Beginning at

a stake set for the S E corner of Survey 61 this block and the N W corner of survey 67 this block, for the N E corner of this survey,

Thence ~~XXXX~~ South 1973.1 varas to a stake set for the S W corner of survey 67 this Block and the S E corner of this survey, under fence on Partition Line,

Thence S 89°46'W 950.4 varas to a pipe set for the S W corner of this survey and the S E corner of survey 69 this block, marked "S 68" and on Partition Line,

Thence North 1977 varas to a pipe set for the S E corner of survey 60 this block, marked "S 60", for the N W corner of this survey,

Thence East 950.4 varas

to the place of beginning.

Chain Carriers } Frank Johnson
Lloyd Anderson.

Surveyed May 1924.

By special act of the legislature March 1925

I, James P. Dod, Licensed Land Surveyor of the State of Texas, do hereby

certify that the foregoing survey was made by me on the ground, and according to law; that the limits, boundaries and corners, with the marks, natural and artificial, are truly described in the foregoing Field Notes, just as I found them on the ground; and they are recorded in Book _____, Page _____, Surveyor's Records of said county.

This _____ day of _____ 1924.

James P. Dod
Licensed Land Surveyor.

67

LAND OFFICE
F-148949
FIELD NOTES

Filed..... 19.....

.....
Bascom Giles
Commissioner.

.....
French
Clerk.

Approved..... 19.....

.....
Commissioner.

CORRECT ON MAP FOR 332⁵ ACRES
7-10-40
F.

7-10-40 F.

THE STATE OF TEXAS,

DALLAM County.

Survey No. 70

Block C. S.

Field 8962
CORRECT ON MAP FOR 329.1 ACRES
12-4-1941-Atlee
OK for 329.1 Acres
4-7-41
W. L. R.

ORIGINAL FIELD NOTES of a survey of 329.1 acres of land in DALLAM

County, Texas, made for the permanent public free school fund of the State of Texas by virtue of a final decree in the Fifty-third Judicial District Court, Travis County, Texas, dated the 26th day of April, 1924, in Cause No. 36183, wherein the State of Texas was plaintiff and George P. Findlay and others were defendants and known as the Capitol Syndicate Case. Said land having been appropriated to the permanent public free school fund and survey authorized by Chapter 106, Act of the Regular Session of the 38th Legislature, 1923, Page 222.

(For Supreme Court decision see 250 S. W. Rep., Page 651.)

Situated about 19.2 miles N 2°45'W from county seat.

Beginning at

a stake set for the S E corner of survey 59 this block and the N W corner survey 69, for the N E corner this survey,

Thence South 1981 varas to a stake set in Partition Line for the S W corner said survey 69, for the S E corner this survey,

Thence S 89°46'W 468.1 varas with said Partition Line to a Concrete Mon. 3 feet long set 2 feet in the ground, on the East side of the Dalhart to Boise City Lane, for a corner of this survey,

Thence North 10.8 varas to a pipe set for a corner of this survey at a turn in said Lane,

Thence N 89°42'W 471.5 varas, with the north side of said lane, at 460.5 varas passing concrete Mon. set at a turn in ~~said~~ fence, to a point for the S W corner this survey,

Thence North at 10.8 varas passing concrete Mon. set at a turn in fence on east side of said Lane, 1974 varas ~~is~~ in all to a pipe set for the S W corner survey 59 this block, for the N W corner this survey, said pipe marked "S 59", from which a pipe set on west side of Said lane and marked "S 58", set for the S E corner survey 58 this block, bears West 21.6 varas,

Thence East 939.6 varas,

to the place of beginning.

Chain Carriers } Frank Johnson
Lloyd Anderson.

Surveyed May 1924.

I, *James P. Dod* *By special act of the Legislature March 1925* Licensed Land Surveyor of the State of Texas,

do hereby certify that the foregoing survey was made by me on the ground, and according to law; that the limits, boundaries and corners, with the marks, natural and artificial, are truly described in the foregoing Field Notes, just as I found them on the ground; and they are recorded in Book....., Page....., Surveyor's Records of said county.

This day of 1924.

James P. Dod
Licensed Land Surveyor.

468
471
OK

THE STATE OF TEXAS,

Survey No. 71

DALLAM County.

Block C. S.

ORIGINAL FIELD NOTES of a survey of 316.4 acres of land in DALLAM County, Texas, made for the permanent public free school fund of the State of Texas by virtue of a final decree in the Fifty-third Judicial District Court, Travis County, Texas, dated the 26th day of April, 1924, in Cause No. 36183, wherein the State of Texas was plaintiff and George P. Findlay and others were defendants and known as the Capitol Syndicate Case. Said land having been appropriated to the permanent public free school fund and survey authorized by Chapter 106, Act of the Regular Session of the 38th Legislature, 1923, Page 222.

(For Supreme Court decision see 250 S. W. Rep., Page 651.)

Situated about 19.2 miles N 6°W from county seat.

Beginning at

a pipe set in the west line of the Dalhart to Boise City Lane, for the S E corner of Survey 58 this block and the N E corner of this survey, marked "S58", from which a pipe set in east line of said Lane for the S W corner of Survey 59 and the N W corner of survey 70 this block, marked "S 59" bears East 21.6 varas,

Thence South with said west line of said lane 1900.8 varas to a pipe set for the S E corner of this survey and a corner of survey 85 this block, marked "S 71", from which a concrete monument 3 feet long set 2 feet in ground bears South 94.8 varas.

Thence West 939.6 varas to a stake set for the S W corner of this survey and the S E corner of survey 72 this block,

Thence North 1900.8 varas to a stake set for the S E corner of survey 57 this block for the N W corner of this survey,

Thence East 939.6 varas

to the place of beginning.

Chain Carriers } Frank Johnson
Lloyd Anderson

Surveyed May 1924.

By special act of the Legislature March 1925

I, James P. Dod, Licensed Land Surveyor of the State of Texas, do hereby

certify that the foregoing survey was made by me on the ground, and according to law; that the limits, boundaries and corners, with the marks, natural and artificial, are truly described in the foregoing Field Notes, just as I found them on the ground; and they are recorded in Book, Page, Surveyor's Records of said county.

This day of 1924.

James P. Dod Licensed Land Surveyor.

THE STATE OF TEXAS,

Survey No. 72

DALLAM County.

Block C. S.

ORIGINAL FIELD NOTES of a survey of 320 acres of land in DALLAM

County, Texas, made for the permanent public free school fund of the State of Texas by virtue of a final decree in the Fifty-third Judicial District Court, Travis County, Texas, dated the 26th day of April, 1924, in Cause No. 36183, wherein the State of Texas was plaintiff and George P. Findlay and others were defendants and known as the Capitol Syndicate Case. Said land having been appropriated to the permanent public free school fund and survey authorized by Chapter 106, Act of the Regular Session of the 38th Legislature, 1923, Page 222.

(For Supreme Court decision see 250 S. W. Rep., Page 651.)

Situated about 19.2 miles N 6° W from county seat.

Beginning at

a stake set for the S E corner survey 57 this block and the N W corner of survey 71 this block, for the N E corner this survey,

Thence South 1900.8 varas to a stake set for the S W corner survey 71 this block, and the S E corner this survey,

Thence West 950.4 varas to a pipe set for the S W corner of this survey and the S E corner survey 73 this block, marked "S 72", from which a windmill bears N 31° 28' E 99 varas,

Thence North 1900.8 varas to a pipe set for the S E corner survey 56 this block, marked "S 56", for the N W corner this survey,

Thence East 950.4 varas,

to the place of beginning.

Chain Carriers } Frank Johnson
 } Lloyd Anderson.

Surveyed May 1924.

I, James P. Dod by special act of the Legislature March 1925, Licensed Land Surveyor of the State of Texas, do hereby

certify that the foregoing survey was made by me on the ground, and according to law; that the limits, boundaries and corners, with the marks, natural and artificial, are truly described in the foregoing Field Notes, just as I found them on the ground; and they are recorded in Book _____, Page _____, Surveyor's Records of said county.

This _____ day of _____ 1924.

James P. Dod

Licensed Land Surveyor.

LAND OFFICE

THE STATE OF TEXAS,

Survey No. 73

DALLAM County.

Block C. S.

ORIGINAL FIELD NOTES of a survey of 320 acres of land in DALLAM

County, Texas, made for the permanent public free school fund of the State of Texas by virtue of a final decree in the Fifty-third Judicial District Court, Travis County, Texas, dated the 26th day of April, 1924, in Cause No. 36183, wherein the State of Texas was plaintiff and George P. Findlay and others were defendants and known as the Capitol Syndicate Case. Said land having been appropriated to the permanent public free school fund and survey authorized by Chapter 106, Act of the Regular Session of the 38th Legislature, 1923, Page 222.

(For Supreme Court decision see 250 S. W. Rep., Page 651.)

Situated about 19.3 miles N 8°45'W from county seat.

Beginning at

a pipe set for the S E corner of survey 56 this block and the N W corner of survey 72 this block ~~xxxxxx~~, marked "S 56", for the NE corner of this survey,

Thence South 1900.8 varas to a pipe set for the S W corner of said survey 72 this block and the S E corner of this survey, marked "S 72",

Thence West 950.4 varas to a stake set for the S W corner of this survey and the S E corner of survey 74 this block ,

Thence North 1900.8 varas to a stake set for the S E corner of survey 55 this block and for the N W corner of this survey,

Thence East 950.4 varas ~~xxxxxx~~

to the place of beginning.

Chain Carriers } Frank Johnson
 } Lloyd Anderson

Surveyed May 1924.

By special act of the Legislature March 1925

I, James P. Dod, Licensed Land Surveyor of the State of Texas, do hereby

certify that the foregoing survey was made by me on the ground, and according to law; that the limits, boundaries and corners, with the marks, natural and artificial, are truly described in the foregoing Field Notes, just as I found them on the ground; and they are recorded in Book....., Page....., Surveyor's Records of said county.

James P. Dod
Licensed Land Surveyor.

This.....day of.....1924.

6C

THE STATE OF TEXAS,

Survey No. 74

Dallam County.

Block C. S.

ORIGINAL FIELD NOTES of a survey of 74 acres of land in DALLAM

County, Texas, made for the permanent public free school fund of the State of Texas by virtue of a final decree in the Fifty-third Judicial District Court, Travis County, Texas, dated the 26th day of April, 1924, in Cause No. 36183, wherein the State of Texas was plaintiff and George P. Findlay and others were defendants and known as the Capitol Syndicate Case. Said land having been appropriated to the permanent public free school fund and survey authorized by Chapter 106, Act of the Regular Session of the 38th Legislature, 1923, Page 222.

(For Supreme Court decision see 250 S. W. Rep., Page 651.)

Situated about 19.3 miles N 89°45'W from county seat.

Beginning at

a stake set for the S E corner of survey 55 this block and the N W corner of survey 73 this block, for the N E corner of this survey,

Thence South 1900.8 varas to a stake set for the S E corner of survey 73 this block and the S E corner of this survey,

Thence West 950.4 varas to a pipe set for the S W corner of this survey and the S E corner of survey 75 this block, marked "S 74",

Thence North 1900.8 varas to a pipe set for the S E corner of survey 54 this block and the N W corner of this survey, marked "S 54",

Thence East 950.4 varas,

to the place of beginning.

Chain Carriers } Frank Johnson
 } Lloyd Anderson.

Surveyed May 1924.

By special act of the Legislature March 1925.

I, James P. Dod, Licensed Land Surveyor of the State of Texas, do hereby

certify that the foregoing survey was made by me on the ground, and according to law; that the limits, boundaries and corners, with the marks, natural and artificial, are truly described in the foregoing Field Notes, just as I found them on the ground; and they are recorded in Book....., Page....., Surveyor's Records of said county.

This.....day of.....1924.

James P. Dod
Licensed Land Surveyor.

57c

THE STATE OF TEXAS,

Survey No. 75

DALLAM County.

Block C. S.

ORIGINAL FIELD NOTES of a survey of 320 acres of land in DALLAM

County, Texas, made for the permanent public free school fund of the State of Texas by virtue of a final decree in the Fifty-third Judicial District Court, Travis County, Texas, dated the 26th day of April, 1924, in Cause No. 36183, wherein the State of Texas was plaintiff and George P. Findlay and others were defendants and known as the Capitol Syndicate Case. Said land having been appropriated to the permanent public free school fund and survey authorized by Chapter 106, Act of the Regular Session of the 38th Legislature, 1923, Page 222.

(For Supreme Court decision see 250 S. W. Rep., Page 651.)

Situated about 20 miles N 14° 30' W from county seat.

Beginning at

a pipe set for the S E corner of survey 54 this block and the N W corner of survey 74 this block, marked "S 54", for the N E corner of this survey,

Thence South 1900.8 varas to a pipe set for the S W corner of said survey 74 this block and the S E corner of this survey, marked "S 74",

Thence West 950.4 varas to a stake set for the S W corner of this survey and the S E corner of Survey 76 this block,

Thence North 1900.8 varas to a stake set for the S E corner of survey 53 this block for the N W corner of this survey,

Thence East 950.4 varas,

to the place of beginning.

Chain Carriers

Frank Johnson

Lloyd Anderson.

Surveyed May 1924.

By Special Act of the Legislature March 1926

I, James P. Dod

Licensed Land Surveyor of the State of Texas, do hereby

certify that the foregoing survey was made by me on the ground, and according to law; that the limits, boundaries and corners, with the marks, natural and artificial, are truly described in the foregoing Field Notes, just as I found them on the ground; and they are recorded in Book, Page, Surveyor's Records of said county.

James P. Dod

Licensed Land Surveyor.

This day of 1924.

THE STATE OF TEXAS,

Survey No. 76

DALLAM County.

Block C. S.

O.K. 6-20-40

ORIGINAL FIELD NOTES of a survey of 320 acres of land in DALLAM

County, Texas, made for the permanent public free school fund of the State of Texas by virtue of a final decree in the Fifty-third Judicial District Court, Travis County, Texas, dated the 26th day of April, 1924, in Cause No. 36183, wherein the State of Texas was plaintiff and George P. Findlay and others were defendants and known as the Capitol Syndicate Case. Said land having been appropriated to the permanent public free school fund and survey authorized by Chapter 106, Act of the Regular Session of the 38th Legislature, 1923, Page 222.

(For Supreme Court decision see 250 S. W. Rep., Page 651.)

Situated about 20 miles N. 14° 30' W. from county seat.

Beginning at

a stake set for the S E corner of survey 53 this block and the N W corner of ~~this survey~~ survey 75 this block for the N E corner of this survey,

Thence South 1900.8 varas to a stake set for the S W corner of said survey 75 this block and the S E corner of this survey,

Thence West 950.4 varas to a pipe set for the S W corner of this survey and the S E corner of survey 77 this block, marked "S 76",

Thence North 1900.8 varas to a pipe set for the S E corner of survey 52 this block for the N W corner of this survey, marked "S 52"

Thence East 950.4 varas to

*Received
7-2-40
J. Robertson*

to the place of beginning.

Chain Carriers } Frank Johnson
 } Lloyd Anderson.

Surveyed May 1924.

By special act of the Legislature March 1925

I, James P. Dod, Licensed Land Surveyor of the State of Texas, do hereby certify that the foregoing survey was made by me on the ground, and according to law; that the limits, boundaries and corners, with the marks, natural and artificial, are truly described in the foregoing Field Notes, just as I found them on the ground; and they are recorded in Book....., Page....., Surveyor's Records of said county.

This..... day of..... 1924.

James P. Dod
Licensed Land Surveyor.

OK

ORIGINAL FIELD NOTES of a survey of 320 acres of land in DALLAS

County Texas made for the permanent public use about land of the State of Texas by virtue of a land grant in the Fifth United States District Court Texas dated the 25th day of April 1850 in favor of No. 10111 within the limits of Texas was divided into George F. French and others were interested in known as the Capital Graduate Lane. Said land having been represented to the permanent public use and survey authorized by Chapter 106, Art. 1st of the Organic Laws of the State of Texas 1845, 1846 and 1847.

(The Supreme Court decision was 536 S. W. Rep. Page 451)

Situated about 20 miles from Dallas

beginning at a stake set for the S E corner of survey 53 this block and the N W corner of this survey 75 this block for the N E corner of this survey. Thence South 1000.00 yards to a stake set for the S W corner of said survey 75 this block and the S E corner of this survey. Thence West 570.00 yards to a stake set for the S W corner of this survey and the S E corner of survey 77 this block, marked "B 77". Thence North 1000.00 yards to a stake set for the S E corner of survey 53 this block for the N E corner of this survey, marked "B 53". Thence East 570.00 yards to

LAND OFFICE
File 148971
FIELD NOTES

Filed 19.....

Boscom Giles
Commissioner.

French
Clerk.

Approved 19.....

Commissioner.

CORRECT ON MAP FOR 320 ACRES

6/21/40

6-21-40 F

THE STATE OF TEXAS,

Survey No. 77

DALLAM County.

Block C. S.

ORIGINAL FIELD NOTES of a survey of 320 acres of land in DALLAM

County, Texas, made for the permanent public free school fund of the State of Texas by virtue of a final decree in the Fifty-third Judicial District Court, Travis County, Texas, dated the 26th day of April, 1924, in Cause No. 36183, wherein the State of Texas was plaintiff and George P. Findlay and others were defendants and known as the Capitol Syndicate Case. Said land having been appropriated to the permanent public free school fund and survey authorized by Chapter 106, Act of the Regular Session of the 38th Legislature, 1923, Page 222.

(For Supreme Court decision see 250 S. W. Rep., Page 651.)

Situated about 20 miles N 15° 45' W from county seat.

Beginning at

a pipe set for the S E corner of survey 52 this block and the N W corner of survey 76 yhis block, marked "S 52", for the N E corner of this survey

Thence South 1900.8 varas to a pipe set for the S W corner of survey 76 this block and the S E corner of this survey, marked "S 76",

Thence West 950.4 varas to a stake set for the S W corner of this survey and the S E corner of survey 78 this block,

Thence North 1900.8 varas to a stake set for the S E corner of survey 51 this block for the N W corner of this survey,

Thence East 950.4 varas

to the place of beginning.

Chain Carriers

} Frank Johnson
} Lloyd Anderson.

Surveyed May 1924.

I, James P. Dod, *By Special Act of the Legislature March 1925* Licensed Land Surveyor of the State of Texas, do hereby

certify that the foregoing survey was made by me on the ground, and according to law; that the limits, boundaries and corners, with the marks, natural and artificial, are truly described in the foregoing Field Notes, just as I found them on the ground; and they are recorded in Book....., Page....., Surveyor's Records of said county.

This.....day of.....1924.

James P. Dod
Licensed Land Surveyor.

THE STATE OF TEXAS,

Survey No. 78

DALLAM County.

Block C. S.

ORIGINAL FIELD NOTES of a survey of 320 acres of land in DALLAM

County, Texas, made for the permanent public free school fund of the State of Texas by virtue of a final decree in the Fifty-third Judicial District Court, Travis County, Texas, dated the 26th day of April, 1924, in Cause No. 36183, wherein the State of Texas was plaintiff and George P. Findlay and others were defendants and known as the Capitol Syndicate Case. Said land having been appropriated to the permanent public free school fund and survey authorized by Chapter 106, Act of the Regular Session of the 38th Legislature, 1923, Page 222.

(For Supreme Court decision see 250 S. W. Rep., Page 651.)

Situated about 20 miles N 15° 45' W from county seat.

Beginning at

a stake set for the S E corner of survey 51 this block and the N W corner of survey 77 this block, for the N E corner of this survey,

Thence South 1900.8 varas to a stake set for the S W corner of survey 77 this block and the S E corner of this survey,

Thence West 950.4 varas to a pipe set for the S W corner of this survey and the S E corner of survey 79 this block marked, "S 78"

Thence North 1900.8 varas to a pipe set for the S E corner of survey 50 this block, marked "S 50", for the N W corner of this survey,

Thence East 950.4 varas to

to the place of beginning.

Chain Carriers } Frank Johnson
Lloyd Anderson.

Surveyed May 1924.

By special act of the Legislature March 1925

I, James P. Dod, Licensed Land Surveyor of the State of Texas, do hereby

certify that the foregoing survey was made by me on the ground, and according to law; that the limits, boundaries and corners, with the marks, natural and artificial, are truly described in the foregoing Field Notes, just as I found them on the ground; and they are recorded in Book, Page, Surveyor's Records of said county.

James P. Dod

Licensed Land Surveyor.

This day of 1924.

DK

Handwritten notes: 148972, CORRECT ON MAP FOR 320 ACRES, 11/19/52 HF, 12/8/52 VES, Patented 12-22-52, Anderson

THE STATE OF TEXAS,

Survey No. 79

DALLAM County.

Block C. S.

ORIGINAL FIELD NOTES of a survey of 320 acres of land in DALLAM

County, Texas, made for the permanent public free school fund of the State of Texas by virtue of a final decree in the Fifty-third Judicial District Court, Travis County, Texas, dated the 26th day of April, 1924, in Cause No. 36183, wherein the State of Texas was plaintiff and George P. Findlay and others were defendants and known as the Capitol Syndicate Case. Said land having been appropriated to the permanent public free school fund and survey authorized by Chapter 106, Act of the Regular Session of the 38th Legislature, 1923, Page 222.

(For Supreme Court decision see 250 S. W. Rep., Page 651.)

Situated about 21 miles N 17° 30' W from county seat.

Beginning at

a pipe set for the S E corner of survey 50 this block and the N W corner of survey 78 this block, marked "S 50", for the N E corner of this survey,

Thence South 1900.8 varas to a pipe set for the S W corner of survey 78 this block and the S E corner of this survey, marked "S 78",

Thence West 950.4 varas to a stake set for the S W corner of this survey and the S E corner of survey 80 this block,

Thence North 1900.8 varas to a stakes set for the S E corner of survey 49 this block ~~set~~ for the N W corner of this survey,

Thence East 950.4 varas

to the place of beginning.

Chain Carriers } Frank Johnson
Lloyd Anderson.

Surveyed May 1924.

By special act of the Legislature March 1925

I, James P. Dod, Licensed Land Surveyor of the State of Texas, do hereby certify that the foregoing survey was made by me on the ground, and according to law; that the limits, boundaries and corners, with the marks, natural and artificial, are truly described in the foregoing Field Notes, just as I found them on the ground; and they are recorded in Book, Page, Surveyor's Records of said county.

James P. Dod Licensed Land Surveyor.

This day of 1924.

one

THE STATE OF TEXAS,

DALLAM County.

Survey No. 80

Block C. S.

OK for 315 AC.
7-10-20 French

ORIGINAL FIELD NOTES of a survey of 315 acres of land in DALLAM

County, Texas, made for the permanent public free school fund of the State of Texas by virtue of a final decree in the Fifty-third Judicial District Court, Travis County, Texas, dated the 26th day of April, 1924, in Cause No. 36183, wherein the State of Texas was plaintiff and George P. Findlay and others were defendants and known as the Capitol Syndicate Case. Said land having been appropriated to the permanent public free school fund and survey authorized by Chapter 106, Act of the Regular Session of the 38th Legislature, 1923, Page 222.

(For Supreme Court decision see 250 S. W. Rep., Page 651.)

Situated about .20 miles N 17°30'W from county seat.

Beginning at

a stake set for the S E corner of survey 49 this block and the N W corner of survey 79 this block, for the N E corner of this survey,

Thence South 1900.8 varas to a stake set for the S W corner said survey 79 and the S E corner of this survey,

Thence West 934.5 varas to a pipe set for the S W corner of this survey and the N W corner of survey 81 this block, marked "S 80", and set under fence on line of Partition.,

Thence ~~XXXXXX~~ N 0°08'W 1900.8 varas with said line of Partition, to a pipe set under fence for the S W corner said survey 49 and the N W corner of this survey, marked "S 49",

Thence East 938.5 varas to

Patented
7-2-40
Robertson

to the place of beginning.

Chain Carriers } Frank Johnson
 } Lloyd Anderson.

Surveyed May 1924.

By special act of the Legislature March 1925

I, James P. Dod, Licensed Land Surveyor of the State of Texas, do hereby certify that the foregoing survey was made by me on the ground, and according to law; that the limits, boundaries and corners, with the marks, natural and artificial, are truly described in the foregoing Field Notes, just as I found them on the ground; and they are recorded in Book _____, Page _____, Surveyor's Records of said county.

This _____ day of _____ 1924.

James P. Dod
Licensed Land Surveyor.

OK

LAND OFFICE
F-148967
FIELD NOTES

Filed 19.....

Bascam Giles
Commissioner.

French
Clerk.

Approved 19.....

Commissioner.

CORRECT ON MAP FOR 315 ACRES

7-10-40
F.

7-10-40 F.

THE STATE OF TEXAS
DALLAS
ORIGINAL FIELD NOTES of a survey of 315
County, Texas made for the permanent public free school fund of the State of Texas by virtue of a land grant
in the High School Judicial District County Texas Texas dated the 24th day of April 1934 in
the State of Texas was granted and George F. French and others were appointed
known in the (Public) System Case. Both that having been approved in the permanent public free school
fund and every authorized by Chapter 100, Act of the 45th Legislature of the State of Texas 1927.
(For Report of the Board of the State of Texas, Page 101.)
Dated about 30
Survey of
a state set for the S E corner of survey 49 this block and the W
corner of survey 79 this block, for the N E corner of this survey,
thence South 1200.00 varies to a state set for the S W corner said N
survey 79 and the S E corner of this survey,
thence West 784.00 varies to a pipe set for the S E corner of this
survey and the N W corner of survey 61 this block, a survey 2 00,
and set under fence on line of partition,
thence West 1000.00 varies with said line of partition,
to a pipe set under fence for the N W corner said survey 61 and set
N W corner of this survey, marked "A",
thence East 600.00 varies to

THE STATE OF TEXAS,

Survey No. 81

DALLAM County.

Block C. S.

ORIGINAL FIELD NOTES of a survey of 384.4 acres of land in DALLAM

County, Texas, made for the permanent public free school fund of the State of Texas by virtue of a final decree in the Fifty-third Judicial District Court, Travis County, Texas, dated the 26th day of April, 1924, in Cause No. 36183, wherein the State of Texas was plaintiff and George P. Findlay and others were defendants and known as the Capitol Syndicate Case. Said land having been appropriated to the permanent public free school fund and survey authorized by Chapter 106, Act of the Regular Session of the 38th Legislature, 1923, Page 222.

(For Supreme Court decision see 250 S. W. Rep., Page 651.)

Situated about 19 miles N 18°W from county seat.

Beginning at

a pipe set for the S W corner of survey 80 this block and the N W corner of this survey, marked "S 80" and set under fence on Partition Line,

Thence East 1885 varas to a pipe set for the S W corner of survey 78 this block and marked "S 78" for the N E corner of this survey,

Thence South 1156.5 varas to a pipe set under fence on line of Partition and marked "S 81", set for the S E corner of this survey and the S W corner of survey 82 this block,

Thence N 89°42'W 1882 varas to a concrete monument 3 feet long set 2 feet in ground, set for the S W corner of this survey and the S W corner of this Block, from which the S W corner of Abner Taylor League No. 46, bears S 51°50'W 37.5 varas, said corner being a three inch steel pipe, and called for in this position by the Court Partitioners,

Thence N 0°08'W 1146.6 varas with a fence on line of partition

to the place of beginning.

Chain Carriers } Frank Johnson
Lloyd Anderson.

Surveyed May 1924.

By Special Act of the Legislature March 1925

I, James P. Dod, Licensed Land Surveyor of the State of Texas, do hereby certify that the foregoing survey was made by me on the ground, and according to law; that the limits, boundaries and corners, with the marks, natural and artificial, are truly described in the foregoing Field Notes, just as I found them on the ground; and they are recorded in Book, Page, Surveyor's Records of said county.

This day of 1924.

James P. Dod Licensed Land Surveyor.

076

THE STATE OF TEXAS,

Survey No. 82

DALLAM County.

Block C. S.

ORIGINAL FIELD NOTES of a survey of 390.9 acres of land in DALLAM County, Texas, made for the permanent public free school fund of the State of Texas by virtue of a final decree in the Fifty-third Judicial District Court, Travis County, Texas, dated the 26th day of April, 1924, in Cause No. 36183, wherein the State of Texas was plaintiff and George P. Findlay and others were defendants and known as the Capitol Syndicate Case. Said land having been appropriated to the permanent public free school fund and survey authorized by Chapter 106, Act of the Regular Session of the 38th Legislature, 1923, Page 222.

(For Supreme Court decision see 250 S. W. Rep., Page 651.)

Situated about 19 miles N. 18° W from county seat.

Beginning at

a pipe set for the S W corner of survey 78 this block and the N E corner of survey 81 this block, marked "S 78", for the N W corner of this survey,

Thence East 1900.8 varas to a pipe set for the S W corner of survey 76 this block and marked "S 76", for the N E corner of this survey,

Thence South 1165.5 varas to a pipe set for the S E corner of this survey and the S W corner of Survey 83 this Block, marked "S 82" and set under fence on Partition Line,

Thence N 89° 42' W 1900.8 varas to a pipe set for the S E corner of survey 81 this block and the S W corner of this survey, marked "S 81",

Thence North 1156.5 varas

to the place of beginning.

Chain Carriers

Frank Johnson

Lloyd Anderson

Surveyed May 1924.

By special act of the Legislature March 1925

I, James P. Dod, Licensed Land Surveyor of the State of Texas, do hereby

certify that the foregoing survey was made by me on the ground, and according to law; that the limits, boundaries and corners, with the marks, natural and artificial, are truly described in the foregoing Field Notes, just as I found them on the ground; and they are recorded in Book, Page, Surveyor's Records of said county.

James P. Dod

This day of 1924.

Licensed Land Surveyor.

OK

THE STATE OF TEXAS,

Survey No. 83

DALLAM County.

Block C. S.

ORIGINAL FIELD NOTES of a survey of 393.9 acres of land in DALLAM

County, Texas, made for the permanent public free school fund of the State of Texas by virtue of a final decree in the Fifty-third Judicial District Court, Travis County, Texas, dated the 26th day of April, 1924, in Cause No. 36183, wherein the State of Texas was plaintiff and George P. Findlay and others were defendants and known as the Capitol Syndicate Case. Said land having been appropriated to the permanent public free school fund and survey authorized by Chapter 106, Act of the Regular Session of the 38th Legislature, 1923, Page 222.

(For Supreme Court decision see 250 S. W. Rep., Page 651.)

Situated about 19 miles N 14° 30' W from county seat.

Beginning at

a pipe set for the S W corner of survey 76 this block and the N E corner of survey 82 this block, marked "S 76", for the N W corner of this survey,

Thence East 1900.8 varas to a pipe set for the S W corner of survey 74 this block, marked "S 74", for the N E corner of this survey,

Thence South 1174.5 varas to a pipe set for the S E corner of this survey and the S W corner of survey 84 this block, marked "S 83" and set under fence on line of Partition.,

Thence N 89° 42' W 1900.8 varas to a pipe set for the S E corner of survey 82 this block and the S W corner of this survey, under fence on line of partition,

Thence North 1165.5 varas

File 148855
CORRECT ON MAP FOR 393.9 ACRES
12/31/37 hes/ie
Patented 1-12-38
C. H. Johnson
to the place of beginning.

Chain Carriers } Frank Johnson
 } Lloyd Anderson.

Surveyed May 1924.

I, James P. Dod, Licensed Land Surveyor of the State of Texas, do hereby certify that the foregoing survey was made by me on the ground, and according to law; that the limits, boundaries and corners, with the marks, natural and artificial, are truly described in the foregoing Field Notes, just as I found them on the ground; and they are recorded in Book _____, Page _____, Surveyor's Records of said county.

This _____ day of _____ 1924.

James P. Dod
Licensed Land Surveyor.

OTC

THE STATE OF TEXAS,

Survey No. 84

DALLAM County.

Block C. S.

ORIGINAL FIELD NOTES of a survey of 396.9 acres of land in DALLAM

County, Texas, made for the permanent public free school fund of the State of Texas by virtue of a final decree in the Fifty-third Judicial District Court, Travis County, Texas, dated the 26th day of April, 1924, in Cause No. 36183, weherin the State of Texas was plaintiff and George P. Findlay and others were defendants and known as the Capitol Syndicate Case. Said land having been appropriated to the permanent public free school fund and survey authorized by Chapter 106, Act of the Regular Session of the 38th Legislature, 1923, Page 222.

(For Supreme Court decision see 250 S. W. Rep., Page 651.)

Situated about 18.7 miles N. 10° W. from county seat.

Beginning at

a pipe set for the S W corner of survey 74 this block, ~~marked~~ and the N E corner of Survey 83 this block, marked "S 74", for the N W corner of this survey,

Thence East 1900.8 varas to a pipe set for the S W corner of survey 72 this block, marked "S 72", for the N E corner of this survey,

Thence South 1183.5 varas to a pipe set for the S E corner of this survey and the S W corner of survey 85 this block, marked "S 84" and set under fence on Partition Line,

Thence N 89° 42' W 1900.8 varas with said fence to a pipe set for the S E corner of survey 83 this block and the S W corner of this survey,

Thence North 1174.5 varas

to the place of beginning.

Chain Carriers

Frank Johnson

Lloyd Anderson.

Surveyed May. 1924.

I,

James P. Dod

By special act of the Legislature March 1925

Licensed Land Surveyor of the State of Texas, do hereby

certify that the foregoing survey was made by me on the ground, and according to law; that the limits, boundaries and corners, with the marks, natural and artificial, are truly described in the foregoing Field Notes, just as I found them on the ground; and they are recorded in Book....., Page....., Surveyor's Records of said county.

James P. Dod

Licensed Land Surveyor.

This.....day of.....1924.

OK

THE STATE OF TEXAS,

DALLAM

County.

Survey No. 85

Block C. S.

ORIGINAL FIELD NOTES of a survey of 490.9 acres of land in DALLAM

County, Texas, made for the permanent public free school fund of the State of Texas by virtue of a final decree in the Fifty-third Judicial District Court, Travis County, Texas, dated the 26th day of April, 1924, in Cause No. 36183, wherein the State of Texas was plaintiff and George P. Findlay and others were defendants and known as the Capitol Syndicate Case. Said land having been appropriated to the permanent public free school fund and survey authorized by Chapter 106, Act of the Regular Session of the 38th Legislature, 1923, Page 222.

(For Supreme Court decision see 250 S. W. Rep., Page 651.)

Situated about 18.7 miles N 62° W from county seat.

Beginning at

a pipe set for the S W corner survey 72 this block and the N E corner of survey 84, marked "S 72", for the N W corner this survey,

Thence East 1890 varas to a pipe set for the S E corner ~~and~~ survey 71 this block, on the west side of the Dalhart to Boise City Lane, marked "S 71", for a corner of this survey,

Thence South 95.8 varas to a Concrete Mon. 3 feet long set 2 feet in the ground at a corner in said lane, for a corner of this survey,

Thence N 89° 42' E 471.5 varas to a concrete Mon. set at a turn in said lane, for the N E corner of this survey,

Thence S 0° 42' E 1098 varas to a concrete Mon. set for the S E corner of this survey, in the Partition Line and on the west line of said lane,

Thence N 89° 42' W 2375.2 varas with a fence on the Partition Line to a pipe set for the S E corner survey 84 this block, and the S W corner of this survey, marked "S 84",

Thence North 1183.5 varas

to the place of beginning.

Chain Carriers } Frank Johnson
Lloyd Anderson.

Surveyed May 1924.

I, James P. Dod by special act of the Legislature March 1925, Licensed Land Surveyor of the State of Texas,

do hereby certify that the foregoing survey was made by me on the ground, and according to law; that the limits, boundaries and corners, with the marks, natural and artificial, are truly described in the foregoing Field Notes, just as I found them on the ground; and they are recorded in Book, Page, Surveyor's Records of said county.

James P. Dod
Licensed Land Surveyor.

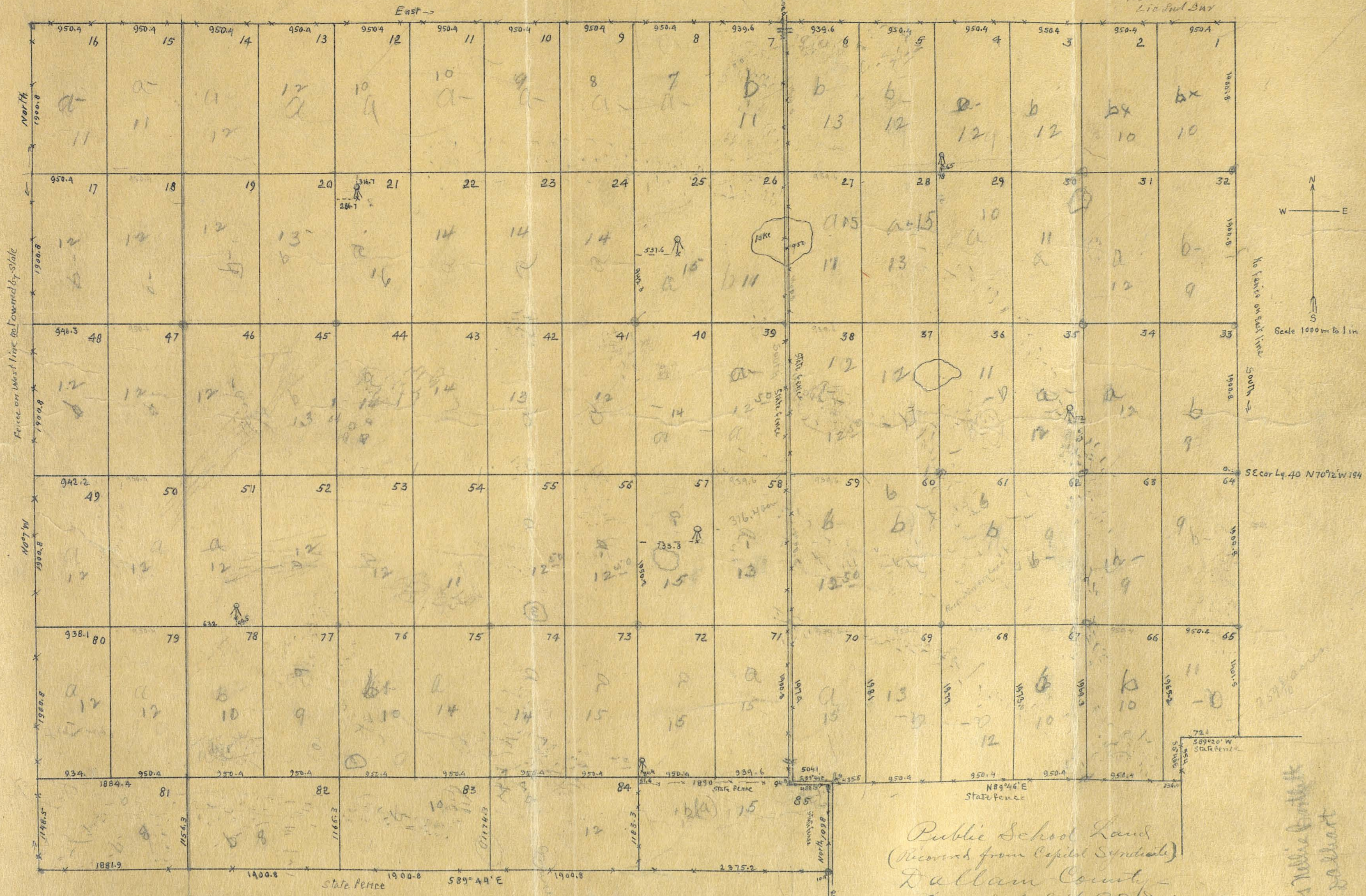
This day of 1924.

OC

I, R.S. Dod, Licensed Land Surveyor of Texas, do hereby certify that the map below is the original map of the survey made by me for the State of Texas of the lands, and the subdivisions of the lands in Dallam Co. Texas recovered by the State in the District Court of Travis Co. Tex. April 26 1924 in Case No 36185, and that all lines, corners, courses & distances are therein shown just as I found or ran them on the ground by actual survey made by me in the field & according to Law

R.S. Dod
Lic. No. 287

Cap. Syndicate own fence on North line



Public School Land
(Recovered from Capital Syndicate)
Dallam County -
Surveyed by Capt. R.S. Dod -
Licensed Land Surveyor -
Filed in General Land Office June - 1924

Miss Nellie Bartlett
Robert

