

File 5

Concho Co. 9,
on the west county line
Rec^d May 10th 1858.

File 5.
 Concho Co. &
 on the west county line
 Recd May 10th 1858.

2207
2208
2209
2210
2211
2212
2213
2214
2215
2216
2217
2218
2219
2220
2221
2222
2223
2224
2225
2226
2227
2228
2229
2230
2231
2232
2233
2234
2235
2236
2237
2238
2239
2240
2241
2242
2243
2244
2245
2246
2247
2248
2249
2250
2251
2252
2253
2254
2255
2256
2257
2258
2259
2260
2261
2262
2263

2453
2454
2455
2456
2457
2458
2459
2460
2461
2462
2463
2464
2465
2466
2467
2468
2469
2470
2471
2472
2473
2474
2475
2476
2477
2478
2479
2480
2481
2482
2483
2484
2485
2486
2487
2488
2489
2490
2491
2492
2493
2494
2495
2496
2497
2498
2499
2500

2270
2271
2272
2273
2274
2275
2276
2277
2278
2279
2280
2281
2282
2283
2284
2285
2286
2287
2288
2289
2290
2291
2292
2293
2294
2295
2296
2297
2298
2299
2300
2301
2302
2303
2304
2305
2306
2307
2308
2309
2310
2311
2312
2313
2314
2315
2316
2317
2318
2319
2320
2321
2322
2323
2324
2325
2326
2327
2328
2329
2330
2331
2332
2333
2334
2335
2336
2337
2338
2339
2340
2341
2342
2343
2344
2345
2346
2347
2348
2349
2350
2351
2352
2353
2354
2355
2356
2357
2358
2359
2360
2361
2362
2363
2364
2365
2366
2367
2368
2369
2370
2371
2372
2373
2374
2375
2376
2377
2378
2379
2380
2381
2382
2383
2384
2385
2386
2387
2388
2389
2390
2391
2392
2393
2394
2395
2396
2397
2398
2399
2400
2401
2402
2403
2404
2405
2406
2407
2408
2409
2410
2411
2412
2413
2414
2415
2416
2417
2418
2419
2420
2421
2422
2423
2424
2425

Sketch D.
 filed April 9 1858.
 W. Wickland

File Book III. pages:
 Nos 264 - 265 - 257 & 258.

A true copy of sketch D.
 accompanying the applica-
 tions of H. Wickland
 Surveyor Gen. of the S. P. R. Co. made
 April, 9th 1858
 San Ant April 26/58

Concho Co. & File 5
 on the west county line.
 Recd May 10th 1858.



I, J. T. Robison, Commissioner of the General Land Office of the State of Texas, do hereby certify that the plat of land surveys shown hereon is a true and correct copy of the original, with all the endorsements thereon, now on file as an archive of this office.

In testimony whereof I hereunto set my hand and cause to be affixed the seal of the General Land Office, this 6th day of March, 1913.

J. T. Robison
 Commissioner.

Sketch D.
 filed April 9 1858.
 H. Wickelund

File Book III. pages:
 nos 264-265-257 & 258

A true copy of Sketch D. accompanying the applications of H. Wickelund Surveyor Gen. of the S. P. R. R. Co. made April 9th 1858. J. G. Grand

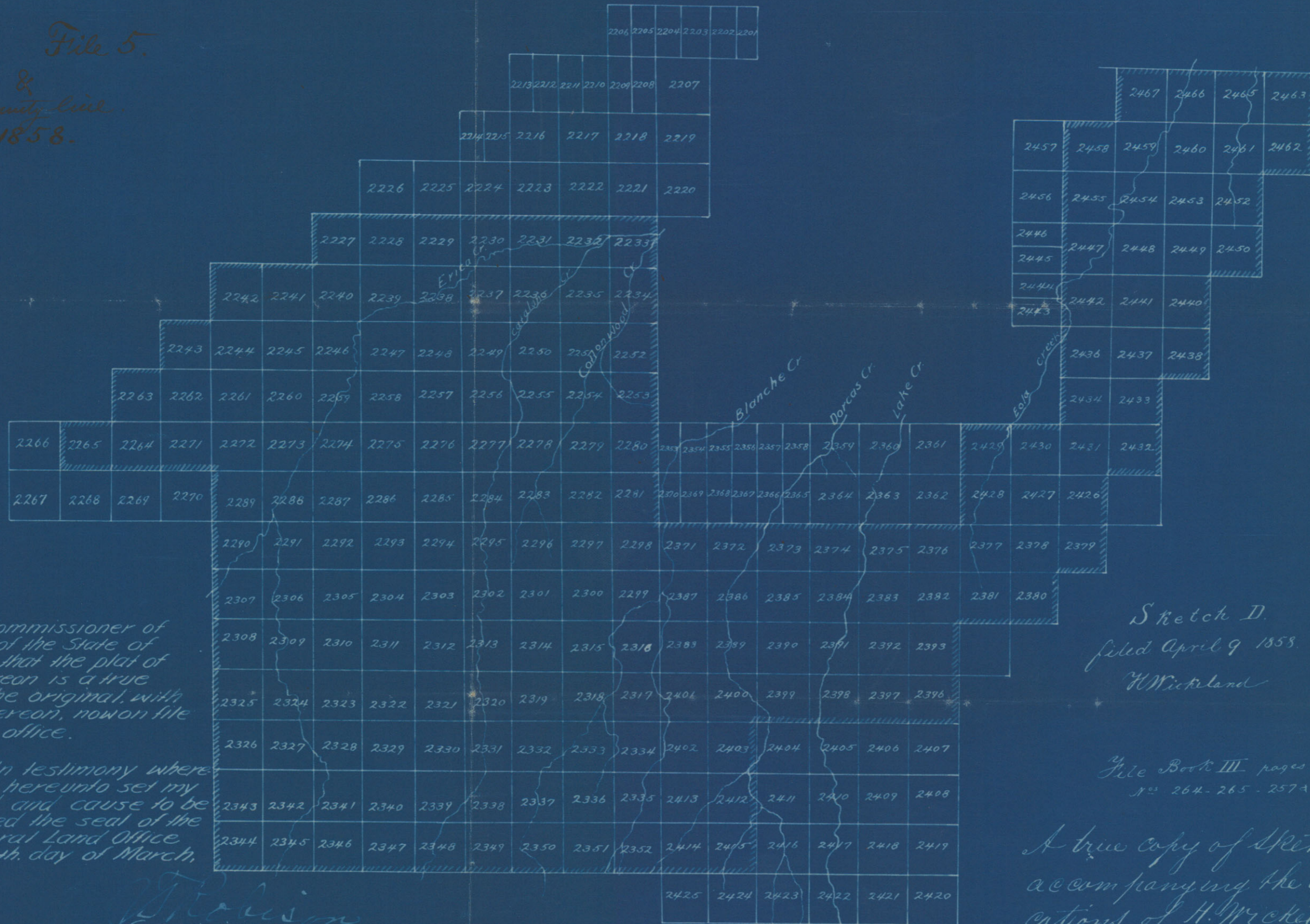
San Ant. April 26/58 Dist. Sur. B. D.

COUNTER# 11148

2 of 2
Concho Co. SK. File # 5

CONCHO CO.
SKETCH FILE NO 5

File 5.
 Concho Co. &
 on the West county line.
 Recd May 10th 1858.



I, J. T. Robison, Commissioner of
 the General Land Office of the State of
 Texas, do hereby certify that the plat of
 land surveys shown hereon is a true
 and correct copy of the original, with
 all the endorsements thereon, now on file
 as an archive of this office.

In testimony where
 of I hereunto set my
 hand and cause to be
 affixed the seal of the
 General Land Office
 this 6th day of March,
 1913.

J. T. Robison
 Commissioner.

Sketch D.
 filed April 9 1858.

H. Wickelund

File Book III pages:
 nos 264-265-257A-258

A true copy of Sketch D.
 accompanying the appli-
 cations of H. Wickelund
 Surveyor Gen. of the S. P. R. R. Co. made
 April 9th 1858. J. G. Wrenn
 San Ant. April 26/58 Dist. Sur. B. D.

CONCHO COUNTY
SKETCH FILE 5
S. P. R. R. Co. SURVEYS
BY F. GIRAUD
APR. 9th 1858.