

ELVERA M. JOHNSON
Parker County District Clerk
P.O. Box 2050
Weatherford, Texas 76086-2050
Telephone: (817) 598-6114
Fax: (817) 598-6131

June 29, 2005

VIA FEDERAL EXPRESS

The Honorable Jerry Patterson
Commissioner

Attn: C. B. Thomson, Director of Surveys
General Land Office
Stephen F. Austin Building
1700 North Congress Avenue
Austin, Texas 78701

File No. Boundary File 6
Tarrant County
Tarrant - Denton County Line
Modified and Corrected Final Judgment

Date Filed: July 7, 2005

Jerry Patterson, Commissioner

By Douglas Howard

RE: *Tarrant County v. Denton County*; Cause No. 44051, 43rd Judicial District
Court of Parker County, Texas

Dear Commissioner Patterson:

Enclosed for filing with your Office are certified copies of the Modified and Corrected Final Judgment in the above-referenced cause and the field notes and plat of the boundary line between Tarrant County and Denton County prepared pursuant to that Judgment by the Court-appointed surveyor, Garey W. Gilley, LSLS, RPLS.

Please acknowledge your filing of the enclosed by placing your Office's file mark or other form of receipt on the enclosed copy of this letter and return it to me in the enclosed self-addressed, stamped envelope.

Thank you for your kind attention to this matter.

Very truly yours,



Ms. Elvera M. Johnson
District Clerk
Parker County, Texas

File No. Boundary File 6

Tarrant County

~~Tarrant-Denton County Line~~

~~Modified and Corrected Final Judgment~~

NO. 44051

Date Filed: July 7, 2005

TARRANT COUNTY,
Jerry Patterson, Commissioner

By Douglas Howard Plaintiff

v.

DENTON COUNTY,

Defendant.

§
§
§
§
§
§
§
§
§
§

RECEIVED AND FILED
FOR RECORD
AT 4:00 O'CLOCK P M
APR 7 2004

IN THE DISTRICT COURT
District Clerk
By [Signature] Deputy
PARKER COUNTY, TEXAS

PARKER COUNTY, TEXAS

43RD JUDICIAL DISTRICT

MODIFIED AND CORRECTED FINAL JUDGMENT

The Final Judgment signed on March 8, 2004, is modified and corrected as follows:

On September 20, 1999, this cause came on for trial and Plaintiff Tarrant County and Defendant Denton County appeared by and through their duly-elected officers and representatives and their attorneys of record. The parties announced ready for trial, and trial proceeded in this matter through October 11, 1999. The parties had previously agreed in open court that this case would be tried without a jury; therefore, all questions of fact and law were submitted to the Court.

The Court entered and signed a judgment in favor of Denton County on October 9, 2000.

Thereafter, Plaintiff Tarrant County appealed the Court's judgment to the Court of Appeals. The Court of Appeals, following submission of briefs and argument of counsel, reversed this Court's judgment and rendered judgment by opinion dated August 1, 2002, reported at 87 S.W.3d 159. The Supreme Court of Texas has denied Denton County's petition for review.

On September 19, 2003, the Court of Appeals issued its mandate to this Court as follows:

It is ordered that the trial court's judgment in favor of Denton County is reversed and we render judgment in favor of Tarrant County based upon the validity of the Interlocal Cooperation

Agreement and the counties' orders approving the agreement and the surveys made as a result of the agreement. We sustain Tarrant County's issues regarding attorney's fees and surveying expenses and render judgment in its favor. We remand the case to the trial court for entry of a judgment properly adopting the Jackson survey and for entry of any other orders the trial court deems appropriate related to or necessary to any resurveying and remarking of the boundary.

It is further ordered that appellee Denton County shall pay all of the costs of this appeal, for which let execution issue.

Accordingly, we command you to observe the order of the Court of Appeals.

Accordingly, in order to comply with the mandate of the Court of Appeals, it is therefore ORDERED, ADJUDGED, AND DECREED that:

1. The boundary line between Tarrant and Denton Counties commences at the northwest corner of Dallas County (which is also the location of the northeast corner of Tarrant County) surveyed, established, and monumented by Donald Jackson and approved and adopted in 1986-1987 by the Counties of Denton, Tarrant, Dallas, and Collin, and filed with the Commissioner of the General Land Office of Texas.

2. The boundary line between Denton and Tarrant Counties shall be a straight-line with a single bearing and shall be regarded as the true boundary line between the two counties beginning at the northwest corner of Dallas County/northeast corner of Tarrant County, as established and monumented by Donald Jackson in 1986-1987, and proceeding to the southeast corner of Wise County, and shall be regarded as the true boundary line between Denton County and Tarrant County.

3. The above-stated boundary line shall be surveyed pursuant to Section 72.004 of the Texas Local Government Code. In the event monumentation cannot be set at a location or locations as prescribed above because of physical obstruction or other physical impossibility, then such monumentation shall be set on the boundary line as near as practical to the boundary markers required by Section 72.004 of the Texas Local Government Code.

4. The survey required by this Modified and Corrected Final Judgment shall be performed by Garey W. Gilley, RPLS, LSLS, assisted by Brookes Baker Surveyors, P.C., and such other surveyors as may be appointed by this Court. Garey W. Gilley is appointed as surveyor pursuant to Chapter 72, Texas Local Government Code, and he shall establish boundary markers as provided by law and this Modified and Corrected Final Judgment. Before performing duties under this Modified and Corrected Final Judgment, Garey W. Gilley shall take the oath of office as prescribed by Article 16, Section 1, Texas Constitution, and shall execute a bond as required by Section 72.005, Texas Local Government Code.

5. The boundary line between Denton and Tarrant Counties shall commence at the northwest corner of Dallas County/northeast corner of Tarrant County as established and monumented by Donald Jackson in 1986-1987, and Mr. Jackson's monumentation shall be re-monumented if necessary.

6. Each position or location required by Section 72.004, Texas Local Government Code, to the extent physically possible, shall be monumented with an appropriate marker reflecting that it is a mile point on the boundary line between Tarrant and Denton Counties and any further information required on boundary markers under Texas law and the rules of the Texas Board of Professional Land Surveyors.

7. As part of such survey, Garey W. Gilley shall prepare field notes and a plat which shall be filed among the other papers in this case. The field notes and the plat shall accurately describe and depict the boundary line between Tarrant and Denton Counties and the monumentation thereof and shall conform to Sections 21.041 and 21.042, Texas Natural Resources Code, and Section 72.004, Texas Local Government Code.

8. After the field notes and plat have been filed in this case, the District Clerk of Parker County is instructed to file certified copies of this Modified and Corrected Final Judgment and the field notes of the boundary line established by this Modified and Corrected Final Judgment with the Commissioner of the Texas General Land Office and with the County Clerks of Tarrant and Denton Counties with instructions to the County Clerks that the field notes of the boundary are to be filed in the real property records of their respective counties.

9. For purposes of the survey ordered herein, access to property crossed by the boundary line is granted, with proper notice to the owner or person in possession. Monumentation necessary to define the location of the boundary line for the public may be placed or erected as necessary.

10. The surveying costs which are incurred for the survey directed by this Modified and Corrected Final Judgment, including the costs of preparation of field notes and plat and the filing of same, and the monumentation of the boundary line adjudged in this cause to be the boundary between Tarrant and Denton Counties shall be paid one-half by Tarrant County and one-half by Denton County pursuant to Section 72.006, Texas Local Government Code.

12. All costs of court incurred in this cause are adjudged against Defendant Denton County.

13. Defendant Denton County shall take nothing by reason of its counterclaim, Defendant Denton County's request for declaratory relief is denied, and all of Defendant Denton County's claims are dismissed with prejudice.

14. All writs and processes for the enforcement and collection of this Final Judgment and costs of court may issue as necessary.

15. All other relief not expressly granted in this Modified and Corrected Final Judgment is denied.

SIGNED this 6 day of April, 2004.

151 D. M. Chestman
JUDGE PRESIDING

State of Texas) County of Parker)
I certify that the foregoing, consisting of <u>5</u> pages, is a true, correct and complete copy of the instrument of record in my possession. This <u>29th</u> day of <u>June</u> 20 <u>06</u>
ELVERA M. JOHNSON, DISTRICT CLERK
By: <u>Pat Hamilton</u> Deputy

File No. Boundary File 6
DON W. HICKEY, RPLS, LSLs
ALAN W. HICKEY, RPLS
GAREY W. GILLEY, RPLS, LSLs
CONSULTANT
Tarrant-Denton County Line
Tarrant County
Final Judgment
Modified and Corrected
Date Filed: June 27, 2005
Page 1 of 64
Filed notes for: Douglas Howard
By Douglas Howard Commissioner

ESTABLISHED 1880
BROOKES BAKER SURVEYORS
A PROFESSIONAL CORPORATION
TITLE AND TOPOGRAPHIC SURVEYING
930 Hickey Court
Granbury, Texas 76049
817-279-0232
Fax 817-279-9694

BROOKES BAKER (1902-1955)
JOHN F. BAKER (1924-1985)
S.J. BAKER (1927-1999)
FRED M. MORRIS (1936-1999)

RECEIVED AND FILED
FOR RECORD
AT 11:35 O'CLOCK 2 M

JUN 29 2005

ELVERA M. JOHNSON, District Clerk
PARKER COUNTY, TEXAS
By Q Kamilton Deputy

The boundary line between Tarrant County and Denton County, situated in North Central Texas. The said line commences at the northwest corner of Dallas County, surveyed, established and monumented by Donald J. Jackson, RPLS number 3949, in 1986-1987. The said boundary line is a straight line with a single bearing south 89 degrees-40 minutes-34 seconds west (Lambert Grid) from the said northwest corner of Dallas County to the southeast corner of Wise County.

Beginning at a 30" aluminum monument with brass disc set in concrete above a 5/8" iron rod set in concrete. Brass disc is marked "Denton County on the north, Dallas County on the southeast, Tarrant County on the southwest and RPLS 1767". This monument replaces the monument previously set by me, which replaced the monument set by said Donald Jackson 1986-1987. This monument for the said common north corner of Tarrant and Dallas Counties on the south line of Denton County has a Lambert Coordinate System Value of X=870,796-901/1000 varas and Y=2,536,612-171/1000 varas.

Thence south 89 degrees-40 minutes-34 seconds west, at 196-585/1000 varas, cross the west line of the J.C. Moffett Survey, 669-736/1000 varas north of its southwest corner and the east line of the John Knight Survey, 120-802/1000 varas from its southeast corner;

at 265-017/1000 varas, pass a 30" aluminum monument set in concrete above a 5/8" iron rod set in concrete marked "Denton County on the north and Tarrant County on the south RPLS 1767" (typical ground monument), said monument being on the southwest side of the Lake Side Parkway and having a Lambert Coordinate System Value of X=870,531-930/1000 varas and Y=2,536,610-674/1000 varas;

at 689-186/1000 varas, pass the west line of said Knight Survey 124-509/1000 varas north of its southwest corner and the northerly east line of the J.T. Turner Survey, 124-509/1000 varas north of its reentrant corner;

at 1,565-997/1000 varas, pass a typical ground monument as described herein on the northeast side of Gerault Road, said monument having a Lambert Coordinate System Value of X=869,231-171/1000 varas and Y=2,536,603-319/1000 varas;

at 1,628-651/1000 varas, pass the common line of said Turner Survey and the Joseph Knight Survey, 674-914/1000 varas north of their common south corner;



Tarrant Co. Bdry. File 6

June 27, 2005
Page 2 of 64

Field notes for: - (continued)

at 1,900-8/10 varas, pass **COUNTY LINE MILE POST 1**, which has a Lambert Coordinate System Value of $X=868,896-428/1000$ varas and $Y=2,536,601-425/1000$ varas;

at 2,929-784/1000 varas, pass a typical ground monument as described herein on the east side of Silveron Boulevard, said monument having a Lambert Coordinate System Value of $X=867,867-620/1000$ varas and $Y=2,536,595-611/1000$ varas;

at 3,363-43/100 varas, pass a typical ground monument as described herein on the east side of the north bound lane of FM Highway 2499, said monument having a Lambert Coordinate System Value of $X=867,434-045/1000$ varas and $Y=2,536,593-159/1000$ varas;

at 3,454-427/1000 varas, pass the west line of said Joseph Knight Survey and the east line of the J.N. Tannehill Survey 667-678/1000 varas north of their common south corner;

at 3,801-6/10 varas, pass a typical ground monument as described herein for **COUNTY LINE MILE POST 2** on the west side of Long Prairie Road, said monument having a Lambert Coordinate System Value of $X=866,995-952/1000$ and $Y=2,536,590-682/1000$ varas;

at 4,113-724/1000 varas, pass a typical ground monument as described herein on the west side of Lakeside Boulevard, said monument having a Lambert Coordinate System Value of $X=866,683-883/1000$ varas and $Y=2,536,588-919/1000$ varas;

at 4,404-428/1000 varas, pass the west line of the said Tannehill Survey 663-925/1000 varas north of its southwest corner and the east line of the Richard Knight Survey 286-478/1000 varas south of its northeast corner;

at 4,695-923/1000 varas, pass a typical ground monument as described herein on the east side of Grapevine Lake, said monument having a Lambert Coordinate System Value of $X=866,101-780/1000$ varas and $Y=2,536,585-628/1000$ varas;

at 5,354-428/1000 varas, pass the west line of said Knight Survey, 290-530/1000 varas south of its northwest corner and the east line of the John Guess Survey, 690-168/1000 varas north of the southeast corner;

at 5,702-4/10 varas, pass **COUNTY LINE MILE POST 3** within the waters of Grapevine Lake and whose Lambert Coordinate System Value is $X=865,095-480/1000$ varas and $Y=2,536,579-937/1000$ varas;



Tarrant Co. Bdry. File 6

June 27, 2005
Page 3 of 64

Field notes for: - (continued)

at 7,184-428/1000 varas, pass the west line of said John Guess Survey, 683-120/1000 varas north of its southwest corner and the east line of the Robert Smith Survey, 612-120/1000 varas north of its southeast corner;

at 7,603-2/10 varas, pass **COUNTY LINE MILE POST 4**, within the waters of Grapevine Lake and whose Lambert Coordinate System Value is $X=863,195-007/1000$ varas and $Y=2,536,569-191/1000$ varas;

at 9,239-267/1000 varas, pass the west line of said Robert Smith Survey, 604-012/1000 varas north of its southwest corner and the east line of the F.L. Harris Survey, 604-012/1000 varas north of its southeast corner;

at 9,504 varas, pass **COUNTY LINE MILE POST 5** within the waters of Grapevine Lake and whose Lambert Coordinate System Value is $X=861,294-532/1000$ varas and $Y=2,536,558-448/1000$ varas;

at 10,227-307/1000 varas, pass the west line of said Harris Survey, 600-113/1000 varas north of its southwest corner and the east line of the John Wiznell Survey, 276-16/1000 varas south of its northeast corner;

at 11,404-80/100 varas, pass **COUNTY LINE MILE POST 6** within the waters of Grapevine Lake and whose Lambert Coordinate System Value is $X=859,394-059/1000$ varas and $Y=2,536,547-702/1000$ varas;

at 11,947-378/1000 varas, pass the west line of said Wiznell Survey 277-276/1000 varas south of its northwest corner and the east line of the R.D. Price Survey, 610-511/1000 varas south of its northeast corner;

at 12,941-878/1000 pass the west line of said Price Survey, 900-840/1000 varas north of its reentrant corner and the east line of the David Douthit Survey, 49-130/1000 varas south of its northeast corner;

at 13,305-600/1000 varas, pass a typical ground monument as described herein on the west side of Grapevine Lake set for **COUNTY LINE MILE POST 7**, said monument having a Lambert Coordinate System Value of $X=857,493-583/1000$ and $Y=2,536,536-956/1000$ varas;

Tarrant Co. Bdry. File 6

June 27, 2005
Page 4 of 64

Field notes for: - (continued)

at 13,892-177/1000 varas, pass the west line of said Douthit Survey, 54-505/1000 varas south of its northwest corner and the east line of the William Mills Survey, 386-506/1000 varas south of its northeast corner;

at 13,909-240/1000 varas, pass a typical ground monument as described herein on the west side of White Chapel Road, said monument having a Lambert Coordinate System Value of $X=856,890-045/1000$ varas and $Y=2,536,533-546/1000$ varas;

at 14,839-114/1000 varas, pass the west line of said Mills Survey, 391-856/1000 varas south of its northwest corner and the east line of the William Medlin Survey, 391-856/1000 varas south of its northeast corner;

at 14,956-387/1000 varas, pass a typical ground monument as described herein on the north side of Coyote Road, said monument having a Lambert Coordinate System Value of $X=855,843-075/1000$ and $Y=2,536,527-627/1000$ varas;

at 15,066-748/1000 varas, pass the west line the said Medlin Survey, 393-930/1000 varas south of its northwest corner and the east line of the Joseph Henry Survey, 663-702/1000 varas north of its southeast corner;

at 15,206-4/10 varas, pass **COUNTY LINE MILE POST 8**, having a Lambert Coordinate System Value of $X=855,593-110/1000$ varas and $Y=2,536,526-214/1000$ varas;

at 15,239-966/1000 varas, pass a brass disc set in concrete curb, disc marked "Denton County on north and Tarrant County on south RPLS 1767" (typical curb monument), said monument having a Lambert Coordinate System Value of $X=855,559-548/1000$ and $Y=2,536,526-023/1000$ varas;

at 15,550-070/1000 varas, pass a typical curb disc as described herein, said disc having a Lambert Coordinate System Value of $X=855,249-498/1000$ varas and $Y=2,536,524-270/1000$ varas;

at 16,016-788/1000 varas, pass the west line of said Henry Survey, 655-043/1000 varas north of its southwest corner and the east line of the W.H. Pea Survey, 295-358/1000 varas south of its northeast corner;



Tarrant Co. Bdry. File 6



June 27, 2005
Page 5 of 64

Field notes for: - (continued)

at 16,284-722/1000 varas, pass a typical curb disc as described herein set in the east curb of Greenbriar Court, said disc having a Lambert Coordinate System Value of $X=854,514-972/1000$ and $Y=2,536,520-118$ varas;

at 16,392-067/1000 varas, pass a typical curb disc as described herein set in the west end of median of Indian Creek Drive, said disc having a Lambert Coordinate System Value of $X=854,407-642/1000$ and $Y=2,536,519-512/1000$ varas;

at 16,967-228/1000 varas, pass the west line of the said Pea Survey, 304-021/1000 varas south of its northwest corner and the east line of the Chas. Medlin Survey, 646-380/1000 varas north of its southeast corner;

at 17,107-20/100 varas, pass **COUNTY LINE MILE POST 9**, having a Lambert Coordinate System Value of $X=853,692-634/1000$ varas and $Y=2,536,515-468/1000$ varas;

at 17,315-107/1000 varas, pass a typical ground monument as described herein on the west side of Westlake Boulevard, said monument having a Lambert Coordinate System Value of $X=853,484-763/1000$ and $Y=2,536,514-294/1000$ varas;

at 17,919-695/1000 varas, pass a typical curb disc as described herein set in south curb of the east bound onramp for State Highway 114, said disc having a Lambert Coordinate System Value of $X=852,880-279/1000$ and $Y=2,536,510-977/1000$ varas;

at 18,872-090/1000 varas, pass the west line of the said Medlin Survey, 629-021/1000 varas north of its southwest corner and the east line of the Jesse Sutton Survey, 629-021/1000 varas north of its southeast corner;

at 19,008-00/100 varas, pass a typical ground monument as described herein set for **COUNTY LINE MILE POST 10**, said monument having a Lambert Coordinate System Value of $X=851,792-162/1000$ and $Y=2,536,504-726/1000$ varas;

at 19,851-932/1000 varas, pass the west line of said Sutton Survey, 630-292/1000 varas north of its southwest corner and the east line of the Richard Eads Survey, 630-292/1000 varas north of its southeast corner;

at 20,486-660/1000 varas, pass a typical ground monument as described herein set on the southwest side of J.T. Ottinger Road, said monument having a Lambert Coordinate System Value of $X=850,313-753/1000$ and $Y=2,536,496-366/1000$;



Tarrant Co. Bdny. File 6

June 27, 2005
Page 6 of 64

Field notes for: - (continued)

at 20,798-971/1000 varas, pass the west line of said Eads Survey, 623-149/1000 varas north of its southwest corner and the east line of the John Bacon Survey, 623-149/1000 varas north of its common corner of said Eads Survey;

at 20,884-731/1000 varas, pass the west line of said Bacon Survey and the east line of the Jesse Gibson Survey, 282-849/1000 varas south of the northeast corner of said Gibson Survey;

at 20,908-800/1000 varas, pass a typical ground monument as described herein set at **COUNTY LINE MILE POST 11**, said monument having a Lambert Coordinate System Value of $X=849,891-686/1000$ varas and $Y=2,536,493-980/1000$ varas;

at 21,203-031/1000 varas, pass a typical curb disc as described herein set in the east curb of the east bound lane of State Highway 170, said disc having a Lambert Coordinate System Value of $X=849,597-505/1000$ and $Y=2,536,492-317/1000$ varas;

at 21,404-109/1000 varas, pass a typical curb disc as described herein set in the west curb of the west bound lane of State Highway 170, said disc having a Lambert Coordinate System Value of $X=849,396-463/1000$ and $Y=2,536,491-179/1000$ varas;

at 21,827-105/1000 varas, pass the west line of the said Gibson Survey, 288-178/1000 varas south of its northwest corner and the east line of the William Huff Survey, 288-178/1000 varas south of its northeast corner;

at 21,840-885/1000 varas, pass a typical ground monument as described herein set on the west side of South Walnut Street, said monument having a Lambert Coordinate System Value of $X=848,959-761/1000$ and $Y=2,536,488-713/1000$ varas;

at 22,488-141/1000 varas, pass a typical curb disc as described herein set in the westerly part of the concrete paving of U.S. Highway 377, said disc having a Lambert Coordinate System Value of $X=848,312-614/1000$ and $Y=2,536,485-052/1000$ varas;

at 22,809-60/100 varas, pass a typical curb disc as described herein set in the truck court of a Home Depot Warehouse for **COUNTY LINE MILE POST 12**, said disc having a Lambert Coordinate System Value of $X=847,991-214/1000$ and $Y=2,536,483-234/1000$ varas;

at 23,139-18/100 varas pass a typical curb disc as described herein on the east side of Tex Express Drive whose Lambert Coordinate System Value is $X=847,661-688/1000$ varas and $Y=2,536,481-372/1000$ varas;

June 27, 2005
Page 7 of 64

Field notes for: - (continued)

at 23,662-289/1000 varas, pass the west line said Huff Survey, 280-06/100 varas south of its northwest corner and the east line of the Francisco Cuella Survey, 236-06/100 varas south of its northeast corner;

at 24,638-85/100 varas, pass a typical curb disc as described herein on the west side of Independence Parkway and whose Lambert Coordinate System Value is $X=846,162-273/1000$ varas and $Y=2,536,472-894/1000$ varas;

at 24,710-400/1000 varas, pass a typical ground monument as described herein for **COUNTY LINE MILE POST 13** and whose Lambert Coordinate System Value is $X=846,090-738/1000$ and $Y=2,536,472-491/1000$ varas;

at 25,652-398/1000 varas, pass the west line of the said Cuella Survey, 235 varas south of its northwest corner and the east line of the M.E.P. & P. RR Co. Survey, 235 varas south of its reentrant corner;

at 26,578-203/1000 varas, pass the west line of said M.E.P. & P. RR Co. Survey, 292-661/1000 varas north of its southwest corner and the east line of the Hamilton Perry Survey, 589-66/100 varas north of its southeast corner;

at 26,611-2/10 varas, pass **COUNTY LINE MILE POST 14** and whose Lambert Coordinate System Value is $X=844,190-269/1000$ and $Y=2,536,461-745/1000$ varas;

at 26,642-491/1000 varas, pass a typical ground monument as described herein on the southeast side of Allen Trail and whose Lambert Coordinate System Value is $X=844,158-978/1000$ and $Y=2,536,461-569/1000$ varas;

at 27,528-217/1000 varas, pass the west line of said Perry Survey, 595-03/100 varas north of its southwest corner and the east line of the Rufus King Survey, 381-184/1000 varas south of its northeast corner;

at 28,512-0/10 varas, pass a typical ground monument as described herein for **COUNTY LINE MILE POST 15** and whose Lambert Coordinate System Value is $X=842,289-790/1000$ varas and $Y=2,536,451-003/1000$ varas;

at 29,429-050/1000 varas, pass the west line of the said King Survey, 605-773/1000 varas north of its southwest corner and the east line of the Jonathan Evans Survey, 370-44/100 varas south of its northeast corner;

at 29,566-238/1000 varas, pass a typical curb disc as described herein set in the east curb of Interstate Highway 35 W north bound service road and whose Lambert Coordinate System Value is $X=841,235-733/1000$ varas and $Y=2,536,445-042/1000$ varas;



Tarrant Co. Bdry. File 6

June 27, 2005
Page 8 of 64

Field notes for: - (continued)

at 29,715-736/1000 varas pass a typical curb disc as described herein set in the west curb of Interstate Highway 35 W south bound service road and whose Lambert Coordinate System Value is $X=841,086-262/1000$ varas and $Y=2,536,444-199/1000$ varas;

at 30,205-144/1000 varas, pass a typical curb disc as described herein set in the east curb of Heritage Parkway whose Lambert Coordinate System Value is $X=840,596-936/1000$ varas and $Y=2,536,441-43/1000$ varas;

at 30,412-8/10 varas, pass a typical ground monument as described herein for **COUNTY LINE MILE POST 16** and whose Lambert Coordinate System Value is $X=840,389-317/1000$ varas and $Y=2,536,440-257/1000$ varas;

at 31,043-185/1000 varas, pass the west line of the said Evans Survey, 402-507/1000 varas south of its northwest corner and the east line of the Greenberry Overton Survey, 632-496/1000 varas north of its southeast corner;

at 31,536-148/1000 varas, pass a typical curb disc as described herein set in the east side of the east perimeter road for Alliance Airport and whose Lambert Coordinate System Value is $X=839,266-16/1000$ and $Y=2,536,433-91/1000$ varas;

at 32,054-086/1000 varas, pass a typical curb disc as described herein set in the east side of the west perimeter road for Alliance Airport and whose Lambert Coordinate System Value is $X=838,748-309/1000$ varas and $Y=2,536,430-98/1000$ varas;

at 32,313-6/10 varas, pass a typical ground monument as described herein for **COUNTY LINE MILE POST 17** and whose Lambert Coordinate System Value is $X=838,488-844/1000$ varas and $Y=2,536,429-511/1000$ varas;

at 32,787-759/1000 varas, pass a typical ground monument as described herein set on the west side of F.M. Highway 156 and whose Lambert Coordinate System Value is $X=838,014-766/1000$ and $Y=2,536,426-832/1000$ varas;

at 34,214-4/10 varas, pass a typical curb disc as described herein set for **COUNTY LINE MILE POST 18** and whose Lambert Coordinate System Value is $X=836,588-369/1000$ varas and $Y=2,536,418-768/1000$ varas;



Tarrant Co. Bdry. File 6

COUNTER 83191

June 27, 2005
Page 9 of 64

Field notes for: - (continued)

at 35,896-273/1000 varas, pass a typical ground monument as described herein set on the west side of Keller-Haslet Road and whose Lambert Coordinate System Value is X=834,906-784/1000 and Y=2,536,409-26/100 varas;

at 36,115-20/100 varas, pass a typical ground monument as described herein set for **COUNTY LINE MILE POST 19** and whose Lambert Coordinate System Value is X=834,687-893/1000 varas and Y=2,536,408-022/1000 varas;

at 38,016-00/100 varas, pass a typical ground monument set for **COUNTY LINE MILE POST 20** and whose Lambert Coordinate System Value is X=832,787-417/1000 varas and Y=2,536,397-280/1000 varas;

at 38,776-673/1000 varas, pass the west line of the said Overton Survey and the east line of the Matthew Ashton Survey, 919-68/100 varas north of their common south corner;

at 39,916-80/100 varas, pass a typical ground monument as described herein set for **COUNTY LINE MILE POST 21** and whose Lambert Coordinate System Value is X=830,886-944/1000 varas and Y=2,536,386-534/1000 varas; and continue in all 40,570-853/1000 varas to a typical ground monument marked "Tarrant County on the south, Denton County of the northeast and Wise County on the northwest, RPLS 1767" for the common south corner of Wise County and Denton County in the north line of Tarrant County and whose Lambert Coordinate System Value is X=830,233-004/1000 varas and Y=2,536,382-837/1000 varas and from said monument a 5/8" iron set in concrete bears north no degrees-54 minutes-32 seconds east 252-040/1000 varas and county line mile post 28 on the common line between Denton County and Wise County bears north no degrees-54 minutes-32 seconds east, 3821-143/1000 varas and a 5/8" iron rod set in concrete bears north 89 degees-29 minutes-40 seconds west 1788-876/1000 varas and the northwest corner of Tarrant County bears north 89 degrees-29 minutes-40 seconds west 16,019-652/1000 varas.

The coordinate values and bearings cited herein are per the Texas Coordinate System North Central Zone(NAD 83). They were established by a closed GPS loop through Stations BYRN, HERD and RENO. Theta angle is 0 degrees-42 minutes-26 seconds. The distances cited are Horizontal Ground Lengths. To convert Horizontal Ground Lengths to Horizontal Grid Lengths, multiply by 0.9998445. To convert Horizontal Ground Varas to Horizontal Grid Feet, divide by 0-36/100.

The passing calls for the Original Surveys along this line are descriptive and are not to be used as locative.



Tarrant Co. Bdry. File 6

DENTON COUNTY

MARK "Y" RECOVERED ON CONCRETE AT THE BASE OF POLE SUPPORTING ELECTRIC TRANSMISSION LINE

S84°10'19"E
572.05' (205.938 VRS)

S89°40'34"W

ALL DISTANCES SHOWN TO THE WEST ARE MEASURED FROM THIS MONUMENT

REPLACED MONUMENT PREVIOUS SET BY GAREY GILLEY WITH A 30" ALUMINUM MONUMENT WITH BRASS DISC MARKED TARRANT, DENTON AND DALLAS COUNTIES MARCH 30, 2005
X=2,418,880.28 FEET (870,796.901 VRS)
Y= 7,046,144.92 FEET (2,536,612.171 VRS)
NAD 83

TARRANT COUNTY

N14°12'14"E
383.41' (138.028 VRS)

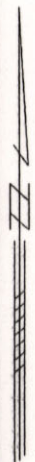
DALLAS COUNTY

MARK "Y" RECOVERED ON CONCRETE BASE AROUND POLE SUPPORTING ELECTRIC TRANSMISSION LINE

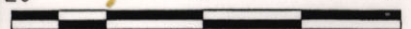
Page 10 of 64

Showing the location of the Northeast corner of Tarrant County and the Northwest corner of Dallas County and the south line of Denton County. Surveyed on the ground December 2004 through June 2005

Garey Gilley and BROOKES BAKER SURVEYORS



20 0 20

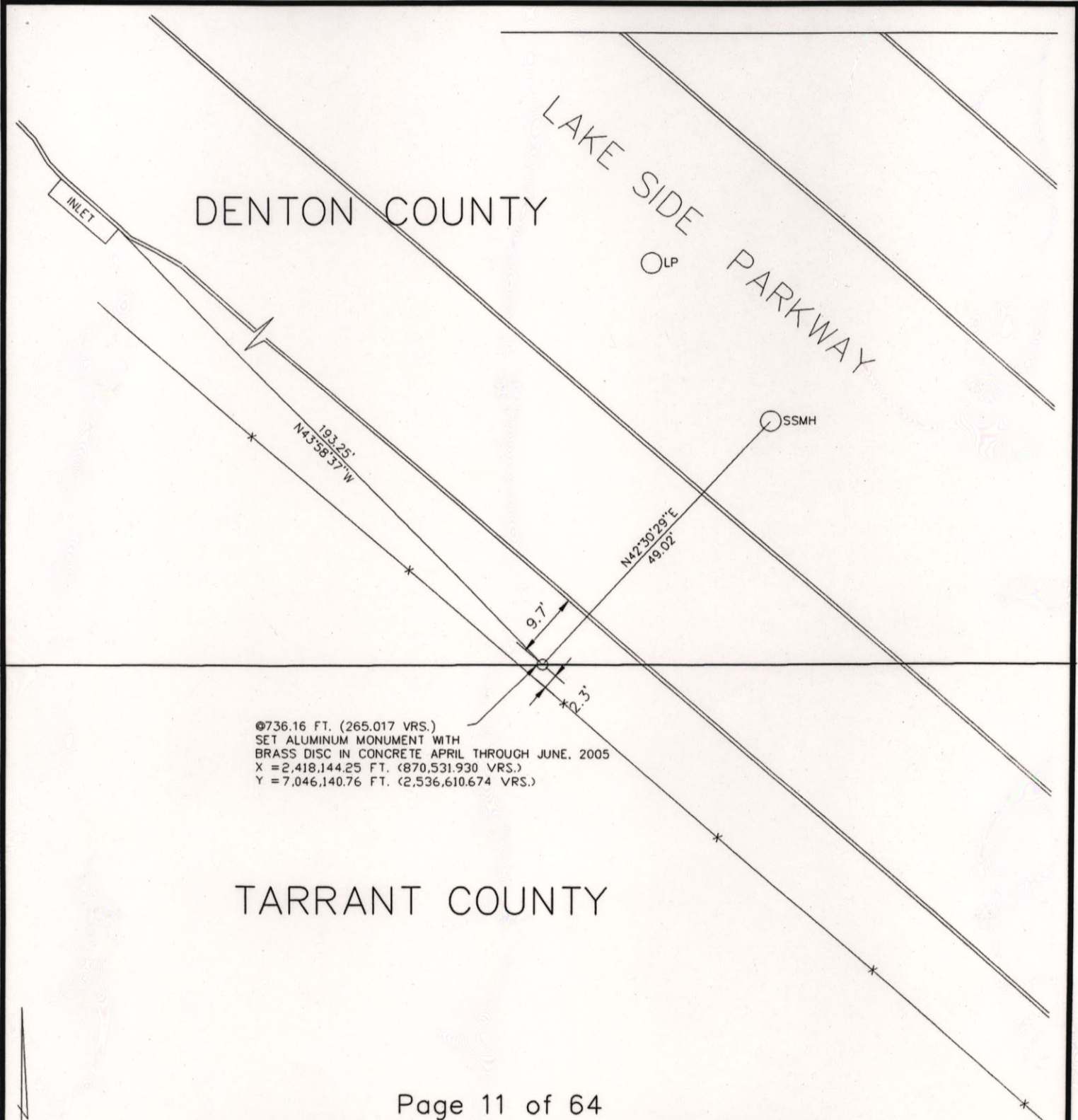


GRAPHIC SCALE
FILE NAME: c:\don05\TCL0505.DWG

Tarrant Co. Bdry. File 6

BROOKES BAKER SURVEYORS
930 HICKEY COURT
GRANBURY, TEXAS 76049
(817) 279-0232
(817)279-9694 FAX
alanh@brookesbakersurveyors.com

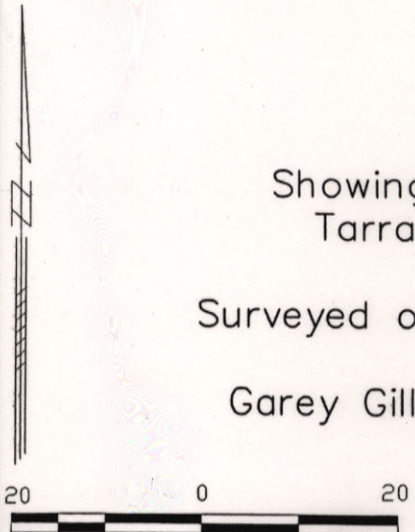
COUNTER 83193



@736.16 FT. (265.017 VRS.)
 SET ALUMINUM MONUMENT WITH
 BRASS DISC IN CONCRETE APRIL THROUGH JUNE, 2005
 X = 2,418,144.25 FT. (870,531.930 VRS.)
 Y = 7,046,140.76 FT. (2,536,610.674 VRS.)

TARRANT COUNTY

Page 11 of 64
 Showing the location of the north line of
 Tarrant County and the south line of
 Denton County
 Surveyed on the ground December 2004 through
 June 2005
 Garey Gilley and BROOKES BAKER SURVEYORS



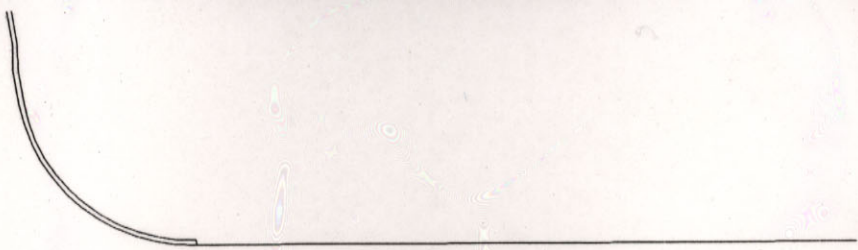
GRAPHIC SCALE
 FILE NAME: c:\don05\TCL0505.DWG

Tarrant Co. Bdry. File 6



BROOKES BAKER SURVEYORS
 930 HICKEY COURT
 GRANBURY, TEXAS 76049
 (817) 279-0232
 (817) 279-9694 FAX
 alanh@brookesbakersurveyors.com

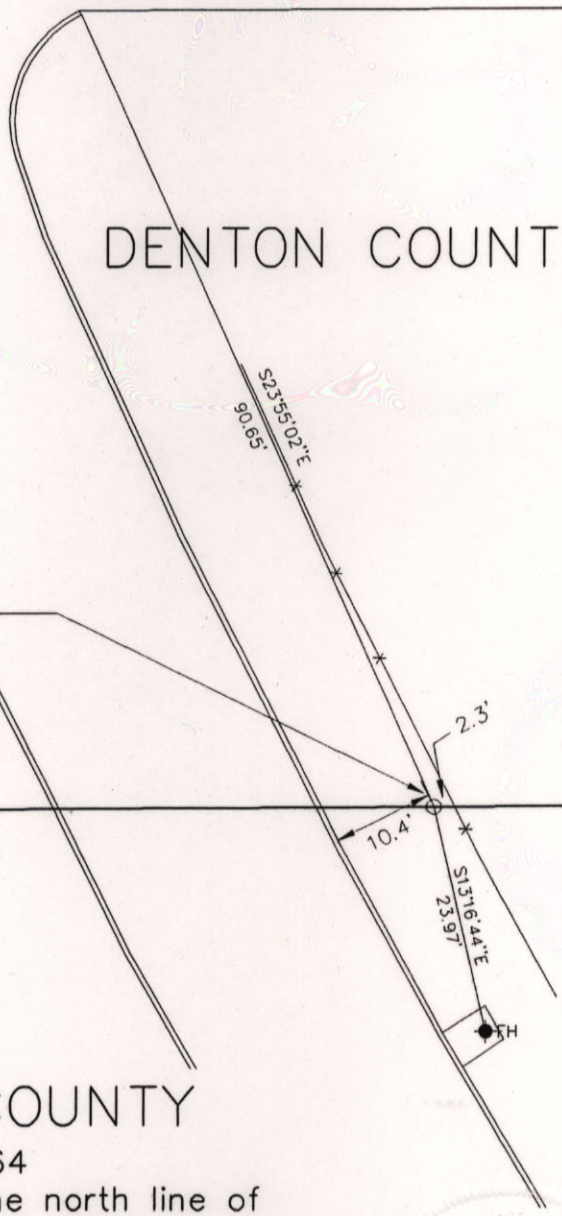
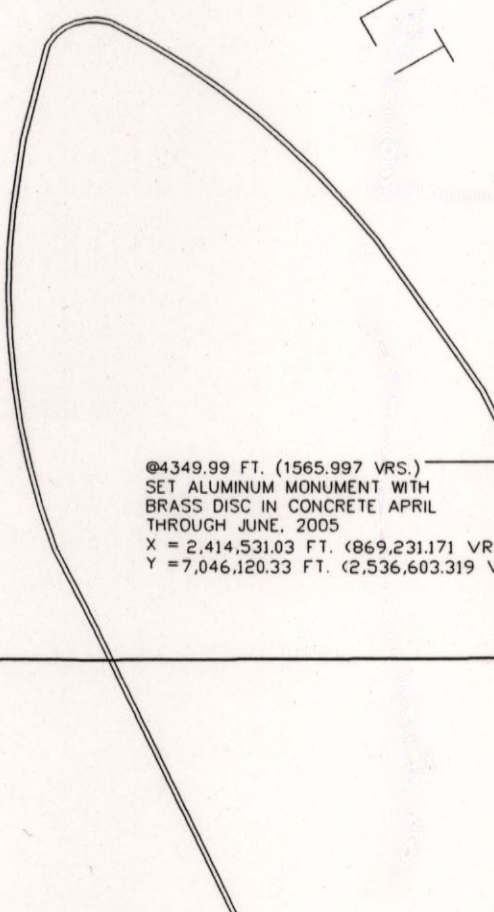
COUNTER 83194



OLD GERAULT ROAD

GERAULT

DENTON COUNTY



@4349.99 FT. (1565.997 VRS.)
SET ALUMINUM MONUMENT WITH
BRASS DISC IN CONCRETE APRIL
THROUGH JUNE, 2005
X = 2,414,531.03 FT. (869,231.171 VRS.)
Y = 7,046,120.33 FT. (2,536,603.319 VRS.)

S23°55'02"E
90.65'

2.3'
10.4'

S13°16'44"E
23.97'

FH

TARRANT COUNTY

Page 12 of 64

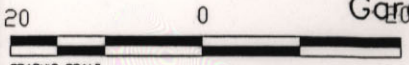
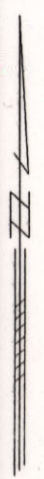
Showing the location of the north line of
Tarrant County and the south line of
Denton County

Surveyed on the ground December 2004 through
June 2005

Garey Gilley and BROOKES BAKER SURVEYORS

BROOKES BAKER SURVEYORS
930 HICKEY COURT
GRANBURY, TEXAS 76049
(817) 279-0232
(817)279-9694 FAX
alanh@brookesbakersurveyors.com

Tarrant Co. Bdry. File G



GRAPHIC SCALE
FILE NAME: c:\don05\TCL0505.DWG

COUNTER 83195

DENTON COUNTY

⑤5280.00 FT. (1900.798 VRS.)
MP NO.1
X =2,413,601.19 FT. (868,896.428 VRS.)
Y = 7,046,115.07 FT. (2,536,601.425 VRS.)

TARRANT COUNTY

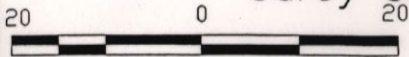
Page 13 of 64

Showing the location of the north line of
Tarrant County and the south line of
Denton County

Surveyed on the ground December 2004 through
June 2005

Garey Gilley and BROOKES BAKER SURVEYORS

BROOKES BAKER SURVEYORS
930 HICKEY COURT
GRANBURY, TEXAS 76049
(817) 279-0232
(817)279-9694 FAX
alanh@brookesbakersurveyors.com



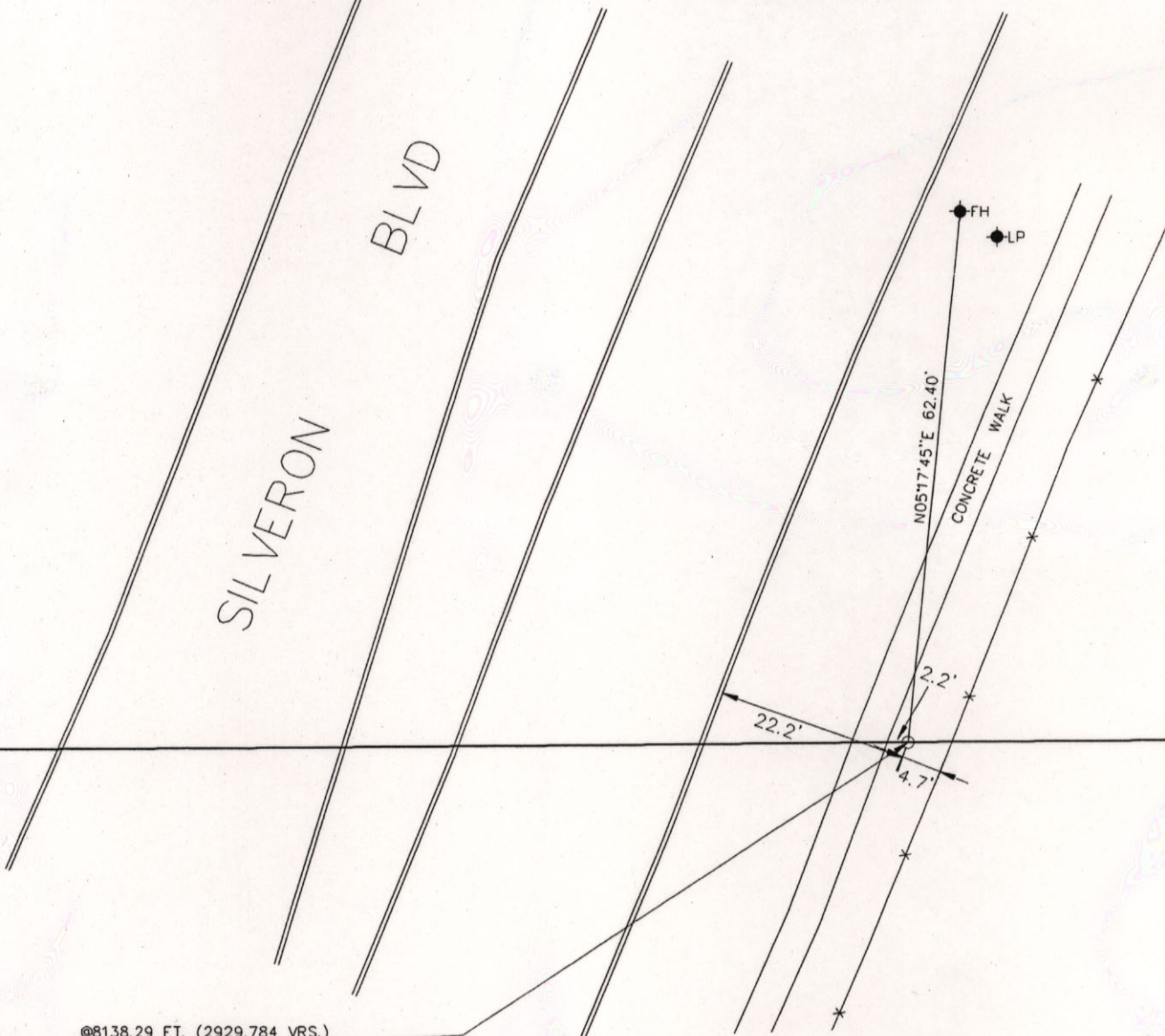
GRAPHIC SCALE
FILE NAME: c:\don05\TCL0505.DWG

Tarrant Co. Bdry. File 6

COUNTER 83196

DENTON COUNTY

SILVERON BLVD



@8138.29 FT. (2929.784 VRS.)
 SET ALUMINUM MONUMENT WITH
 BRASS DISC IN CONCRETE APRIL THROUGH JUNE, 2005
 X = 2,410,743.39 FT. (867,867.620 VRS.)
 Y = 7,046,098.92 FT. (2,536,595.611 VRS.)

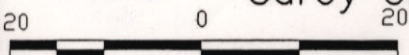
TARRANT COUNTY

Page 14 of 64
 Showing the location of the north line of
 Tarrant County and the south line of
 Denton County

Surveyed on the ground December 2004 through
 June 2005

Garey Gilley and BROOKES BAKER SURVEYORS

BROOKES BAKER SURVEYORS
 930 HICKEY COURT
 GRANBURY, TEXAS 76049
 (817) 279-0232
 (817)279-9694 FAX
 alanh@brookesbakersurveyors.com

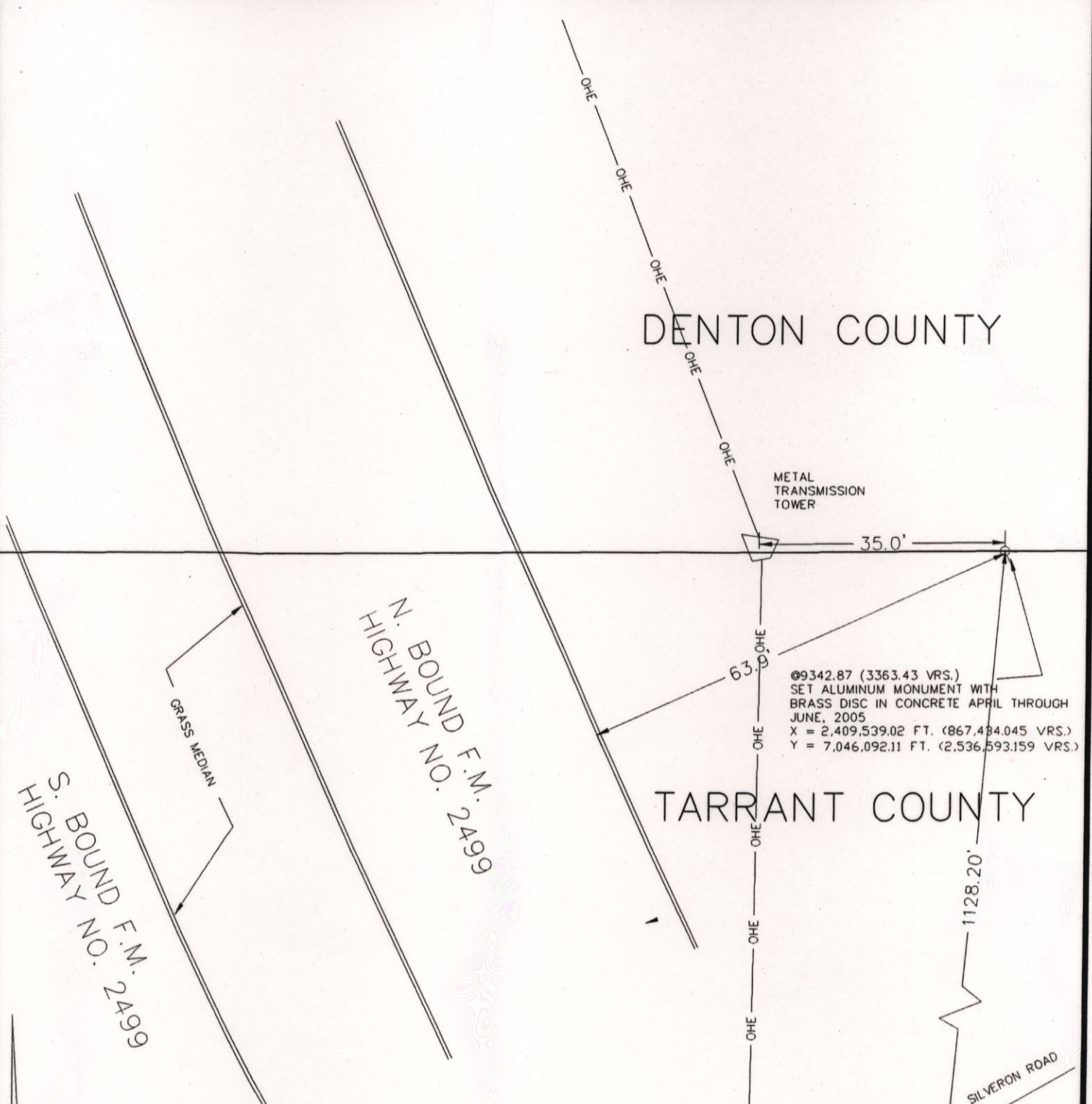


GRAPHIC SCALE
 FILE NAME: c:\don05\TCL0505.DWG

Tarrant Co. Bdry File 6

DENTON COUNTY

TARRANT COUNTY



METAL TRANSMISSION TOWER

35.0'

63'

@9342.87 (3363.43 VRS.)
 SET ALUMINUM MONUMENT WITH
 BRASS DISC IN CONCRETE APRIL THROUGH
 JUNE, 2005
 X = 2,409,539.02 FT. (867,484.045 VRS.)
 Y = 7,046,092.11 FT. (2,536,593.159 VRS.)

1128.20'

SILVERON ROAD

S. BOUND F.M.
 HIGHWAY NO. 2499

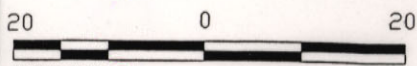
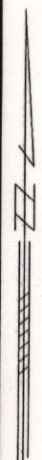
GRASS MEDIAN

N. BOUND F.M.
 HIGHWAY NO. 2499

Page 15 of 64
 Showing the location of the north line of
 Tarrant County and the south line of
 Denton County

Surveyed on the ground December 2004 through
 June 2005

Garey Gilley and BROOKES BAKER SURVEYORS



GRAPHIC SCALE
 FILE NAME: c:\don05\TCL0505.DWG

BROOKES BAKER SURVEYORS
 930 HICKEY COURT
 GRANBURY, TEXAS 76049
 (817) 279-0232
 (817) 279-9694 FAX
 alanh@brookesbakersurveyors.com

Tarrant Co. Bdry. File 6

COUNTER 83198

@10,560.00 FT. (3801.600 VRS.)
 MP NO. 2 SET ALUMINUM MONUMENT WITH
 BRASS DISC IN CONCRETE APRIL THROUGH JUNE, 2005
 X = 2,408,322.09 FT. (866,995.952 VRS.)
 Y = 7,046,085.23 FT. (2,536,590.682 VRS.)

DENTON COUNTY

LONG PRAIRIE

TARRANT COUNTY

TALL HIGHWAY MONUMENT

ROYAL OAKS ROAD

LONG PRAIRIE

Page 16 of 64

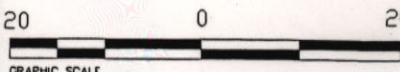
Showing the location of the north line of
 Tarrant County and the south line of
 Denton County

Surveyed on the ground December 2004
 through June 2005

Garey Gilley and BROOKES BAKER
 SURVEYORS

Tarrant Co. Bdry. File 6

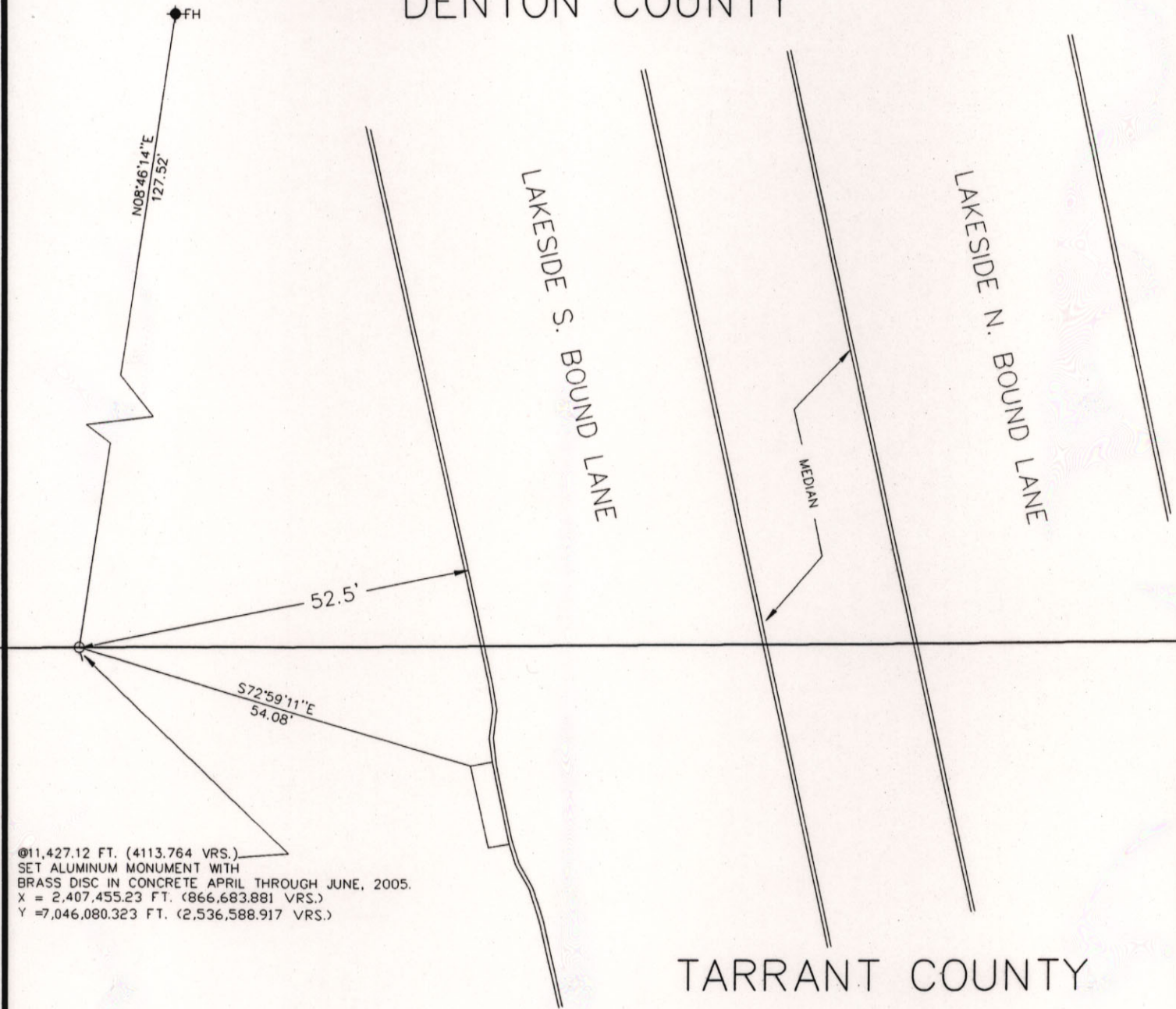
BROOKES BAKER SURVEYORS
 930 HICKEY COURT
 GRANBURY, TEXAS 76049
 (817) 279-0232
 (817)279-9694 FAX
 alanh@brookesbakersurveyors.com



GRAPHIC SCALE
 FILE NAME: c:\don05\TCL0505.DWG

COUNTER 83199

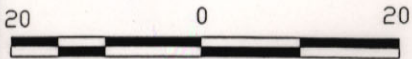
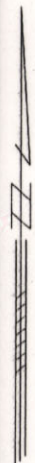
DENTON COUNTY



@11,427.12 FT. (4113.764 VRS.)
 SET ALUMINUM MONUMENT WITH
 BRASS DISC IN CONCRETE APRIL THROUGH JUNE, 2005.
 X = 2,407,455.23 FT. (866,683.881 VRS.)
 Y = 7,046,080.323 FT. (2,536,588.917 VRS.)

TARRANT COUNTY

Page 17 of 64
 Showing the location of the north line of
 Tarrant County and the south line of
 Denton County
 Surveyed on the ground December 2004 through
 June 2005
 Garey Gilley and BROOKES BAKER SURVEYORS



GRAPHIC SCALE
 FILE NAME: c:\don05\TCL0505.DWG

Tarrant Co. Bdy. File 6

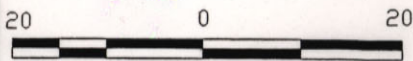
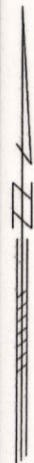
BROOKES BAKER SURVEYORS
 930 HICKEY COURT
 GRANBURY, TEXAS 76049
 (817) 279-0232
 (817) 279-9694 FAX
 alanh@brookesbakersurveyors.com

DENTON COUNTY

TARRANT COUNTY

①13,044.23 FT. (4695.923 VRS.)
SET ALUMINUM MONUMENT WITH
BRASS DISC IN CONCRETE ON EAST
SIDE OF GRAPEVINE LAKE APRIL
THROUGH JUNE 2005.
X = 2,405.838.28 FT. (866,101.780 VRS.)
Y = 7,046,071.19 FT. (2,536,585.628 VRS.)

Page 18 of 64
Showing the location of the north line of
Tarrant County and the south line of
Denton County
Surveyed on the ground December 2004 through
June 2005
Garey Gilley and BROOKES BAKER SURVEYORS



GRAPHIC SCALE
FILE NAME: c:\don05\TCL0505.DWG



Tarrant Co. Bdy. File 6

BROOKES BAKER SURVEYORS
930 HICKEY COURT
GRANBURY, TEXAS 76049
(817) 279-0232
(817) 279-9694 FAX
alanh@brookesbakersurveyors.com

COUNTER 83201

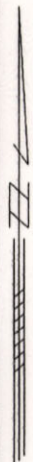
DENTON COUNTY

①15,840.00 FT. (5702.400 VRS.)
MP NO.3
X =2,403,043.00 FT. (865,095.480 VRS.)
Y =7,046,055.38 FT. (2,536,579.937 VRS.)

WATERS OF GRAPEVINE LAKE

TARRANT COUNTY

Page 19 of 64
Showing the location of the north line of
Tarrant County and the south line of
Denton County
Surveyed on the ground December 2004 through
June 2005
Garey Gilley and BROOKES BAKER SURVEYORS



GRAPHIC SCALE
FILE NAME: c:\don05\TCL0505.DWG



Tarrant Co. Bdry. File 6

BROOKES BAKER SURVEYORS
930 HICKEY COURT
GRANBURY, TEXAS 76049
(817) 279-0232
(817) 279-9694 FAX
alanh@brookesbakersurveyors.com

COUNTER 83202

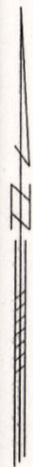
DENTON COUNTY

②1,120.00 FT. (7603.200 VRS.)
MP NO.4
X =2,397,763.91 FT. (863,195.007 VRS.)
Y =7,046,025.53 FT. (2,536,569.191 VRS.)

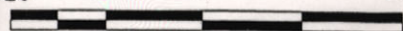
WATERS OF GRAPEVINE LAKE

TARRANT COUNTY

Page 20 of 64
Showing the location of the north line of
Tarrant County and the south line of
Denton County
Surveyed on the ground December 2004 through
June 2005
Garey Gilley and BROOKES BAKER SURVEYORS



20 0 20



GRAPHIC SCALE

FILE NAME:c:\don05\TCL0505.DWG

BROOKES BAKER SURVEYORS
930 HICKEY COURT
GRANBURY, TEXAS 76049
(817) 279-0232
(817)279-9694 FAX
otan@brookesbakersurveyors.com

Tarrant Co. Bdry File 6

COUNTER 83203

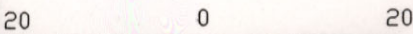
DENTON COUNTY

@26,400.00 FT. (9504.000 VRS.)
MP NO.5
X = 2,392,484.81 FT. (861,294.532 VRS.)
Y = 7,045,995.69 FT. (2,536,558.448 VRS.)

WATERS OF GRAPEVINE LAKE

TARRANT COUNTY

Page 21 of 64
Showing the location of the north line of
Tarrant County and the south line of
Denton County
Surveyed on the ground December 2004 through
June 2005
Garey Gilley and BROOKES BAKER SURVEYORS



GRAPHIC SCALE
FILE NAME: c:\don05\TCL0505.DWG

BROOKES BAKER SURVEYORS
930 HICKEY COURT
GRANBURY, TEXAS 76049
(817) 279-0232
(817) 279-9694 FAX
alanh@brookesbakersurveyors.com

Tarrant Co. Bdry. File 6

COUNTER B3204

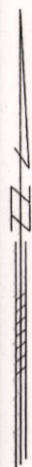
DENTON COUNTY

@31,680.00 FT. (11404.80 VRS.)
MP NO.6
X =2,387,205.72 FT. (859,394.059 VRS.)
Y =7,045,965.84 FT. (2,536,547.702 VRS.)

WATERS OF GRAPEVINE LAKE

TARRANT COUNTY

Page 22 of 64
Showing the location of the north line of
Tarrant County and the south line of
Denton County
Surveyed on the ground MaY 18, 2005.
Garey Gilley and BROOKES BAKER SURVEYORS



20 0 20

GRAPHIC SCALE

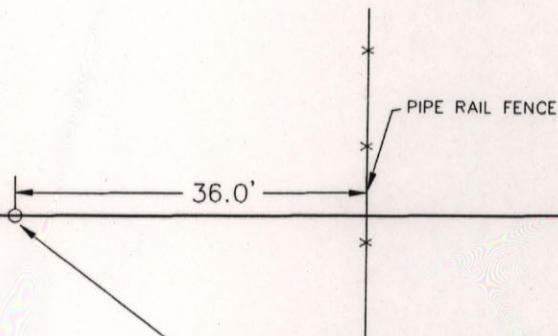
FILE NAME:c:\don05\TCL0505.DWG

BROOKES BAKER SURVEYORS
930 HICKEY COURT
GRANBURY, TEXAS 76049
(817) 279-0232
(817)279-9694 FAX
alanh@brookesbakersurveyors.com

Tarrant Co. Bdry. File 6

COUNTER 83205

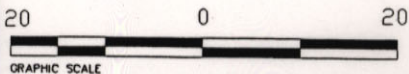
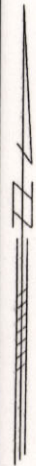
DENTON COUNTY



@36,960.00 FT. (13,305.600 VRS.)
MP NO. 7 SET ALUMINUM MONUMENT WITH
BRASS DISC IN CONCRETE APRIL THROUGH JUNE, 2005.
X = 2,381,926.62 FT. (857,493.583 VRS.)
Y = 7,045,935.99 FT. (2,536,536.956 VRS.)

TARRANT COUNTY

Page 23 of 64
Showing the location of the north line of
Tarrant County and the south line of
Denton County
Surveyed on the ground December 2004 through
June 2005
Garey Gilley and BROOKES BAKER SURVEYORS



GRAPHIC SCALE
FILE NAME: c:\don05\TCL0505.DWG

BROOKES BAKER SURVEYORS
930 HICKEY COURT
GRANBURY, TEXAS 76049
(817) 279-0232
(817)279-9694 FAX
alanh@brookesbakersurveyors.com

Tarrant Co. Bdry. File 6

COUNTER 83206

CLARIDEN RANCH ROAD
DENTON COUNTY

WILLIAM
MILLS
A-877 (Den)

N. WHITE CHAPEL ROAD

SURVEY LINE
@ 38589.38 FEET
13892.177 VARAS

DAVID
DOUTHIT
A-448 (TARR)

© 38,636.78 FT. (13,909.240 VRS.)
BRASS DISC IN CONCRETE APRIL THROUGH JUNE, 2005
X = 2,380,250.13 FT. (856,890.045 VRS.)
Y = 7,045,926.52 FT. (2,536,533.546 VRS.)

TARRANT COUNTY

CONCRETE FLUME

43.6'

10.0'

27.2'

OHE

OHE

OHE

OHE

OHE

OHE

OHE

Page 24 of 64

Showing the location of the north line of
Tarrant County and the south line of
Denton County

Surveyed on the ground December 2004 through
June 2005

Garey Gilley and BROOKES BAKER SURVEYORS

20 0 20

GRAPHIC SCALE

FILE NAME: c:\don05\TCL0505.DWG

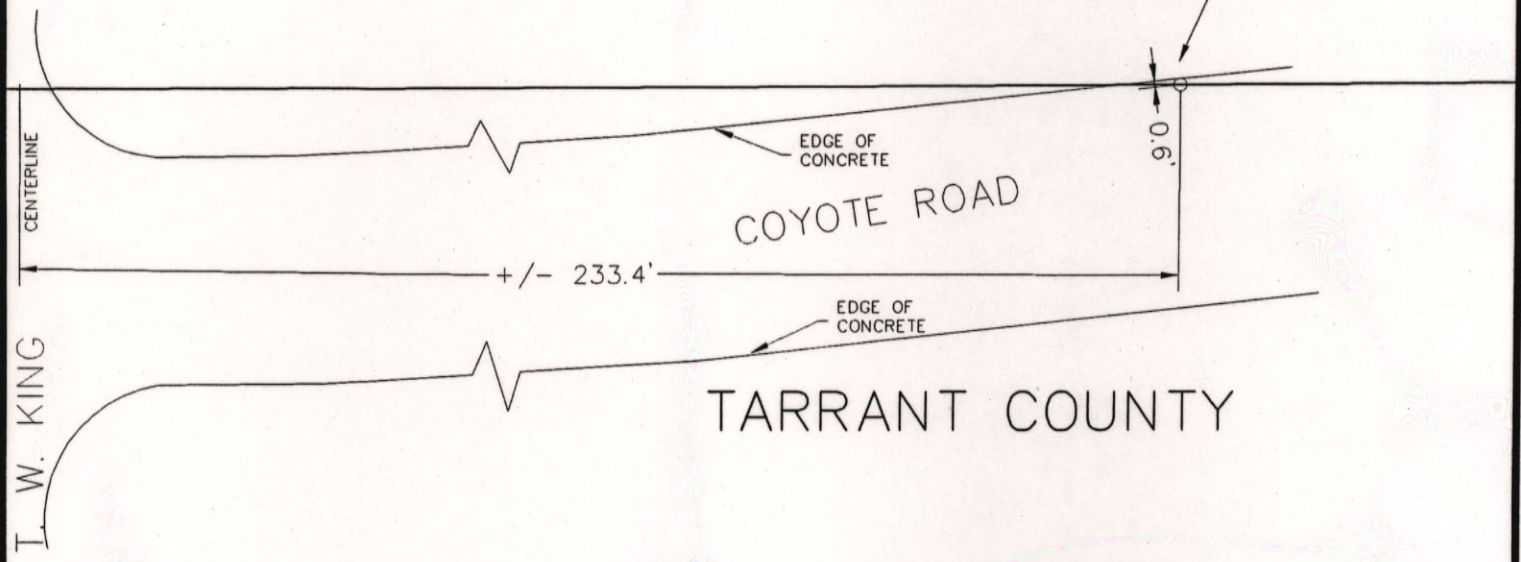
BROOKES BAKER SURVEYORS
930 HICKEY COURT
GRANBURY, TEXAS 76049
(817) 279-0232
(817) 279-9694 FAX
alanh@brookesbakersurveyors.com

Tarrant Co. Bdry. File 6

COUNTER 83207

DENTON COUNTY

⊙ 41,545.52 FT. (14,956.387 VRS.)
BRASS DISC IN CONCRETE APRIL THROUGH JUNE, 2005
X = 2,377,341.88 FT. (855,843.075 VRS.)
Y = 7,045,910.08 FT. (2,536,527.627 VRS.)

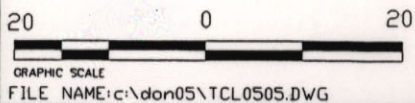


Page 25 of 64

Showing the location of the north line of
Tarrant County and the south line of
Denton County

Surveyed on the ground December 2004 through
June 2005

Garey Gilley and BROOKES BAKER SURVEYORS



BROOKES BAKER SURVEYORS
930 HICKEY COURT
GRANBURY, TEXAS 76049
(817) 279-0232
(817) 279-9694 FAX
alanh@brookesbakersurveyors.com

Tarrant Co. Bd. File 6

COUNTER 83208

DENTON COUNTY

© 42,333.24 FT. (15,239.966 VRS.)
BRASS DISC IN CONCRETE CURB APRIL THROUGH JUNE, 2005
X = 2,376,554.30 FT. (855,559.548 VRS.)
Y = 7,045,905.62 FT. (2,536,526.023 VRS.)

© 42,240.00 FT. (15,206.400 VRS.)
MP NO. 8
X = 2,376,647.53 FT. (855,593.110 VRS.)
Y = 7,045,906.15 FT. (2,536,526.214 VRS.)

TROPHY WOOD DRIVE
S. BOUND LANE

TROPHY WOOD DRIVE
N. BOUND LANE

TARRANT
COUNTY

76.4'

PEBBLE BEACH DRIVE

Page 26 of 64
Showing the location of the
north line of
Tarrant County and the south
line of
Denton County
Surveyed on the ground
December 2004 through
June 2005
Garey Gilley and BROOKES
BAKER SURVEYORS

20 0 20

GRAPHIC SCALE

FILE NAME: c:\don05\TCL0505.DWG

Tarrant Co Bdry File 6

BROOKES BAKER SURVEYORS
930 HICKEY COURT
GRANBURY, TEXAS 76049
(817) 279-0232
(817) 279-9694 FAX
alanh@brookesbakersurveyors.com

COUNTER 83209

DENTON COUNTY

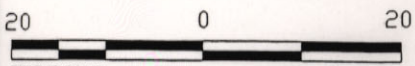
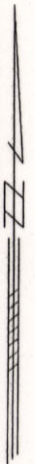
⊙ 43,194.63 FT. (15,550.070 VRS.)
BRASS DISC IN CONCRETE CURB APRIL THROUGH JUNE, 2005
X = 2,375,693.05 FT. (855,249.498 VRS.)
Y = 7,045,900.75 FT. (2,536,524.270 VRS.)



TARRANT COUNTY

THIS AREA UNDER COINSTRUCTION

Page 27 of 64
Showing the location of the north line
of
Tarrant County and the south line of
Denton County
Surveyed on the ground December 2004
through June 2005
Garey Gilley and BROOKES BAKER
SURVEYORS



GRAPHIC SCALE
FILE NAME: c:\don05\TCL0505.DWG



BROOKES BAKER SURVEYORS
930 HICKEY COURT
GRANBURY, TEXAS 76049
(817) 279-0232
(817) 279-9694 FAX
alanh@brookesbakersurveyors.com

Tarrant Co. Bdry File 6

DENTON COUNTY

© 45,235.34 FT. (16,284.722 VRS.)
BRASS DISC IN CONCRETE CURB APRIL THROUGH JUNE, 2005
X = 2,373,652.70 FT. (854,514.972 VRS.)
Y = 7,045,889.22 FT. (2,536,520.118 VRS.)

GREENBRIAR COURT

TARRANT COUNTY

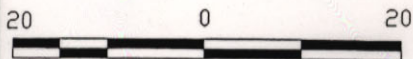
47.4'

INDIAN CREEK DRIVE

Page 28 of 64
Showing the location of the north line
of
Tarrant County and the south line of
Denton County
Surveyed on the ground December 2004
through June 2005

Garey Gilley and BROOKES BAKER
SURVEYORS

BROOKES BAKER SURVEYORS
930 HICKEY COURT
GRANBURY, TEXAS 76049
(817) 279-0232
(817)279-9694 FAX
alanh@brookesbakersurveyors.com



GRAPHIC SCALE
FILE NAME: c:\don05\TCL0505.DWG

Tarrant Co. Bdry. File 6

COUNTER 83211

DENTON COUNTY

FOREST HILL DRIVE

© 45,533.52 FT. (16,392.067 VRS.)
BRASS DISC IN CONCRETE CURB APRIL THROUGH JUNE, 2005
X = 2,373,354.56 FT. (854,407.642 VRS.)
Y = 7,045,887.53 FT. (2,536,519.512 VRS.)

TARRANT COUNTY

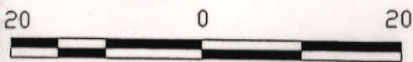
INDIAN CREEK DRIVE

Page 29 of 64

Showing the location of the north line of
Tarrant County and the south line of
Denton County

Surveyed on the ground December 2004
through June 2005

Garey Gilley and BROOKES BAKER SURVEYORS



GRAPHIC SCALE
FILE NAME: c:\don05\TCL0505.DWG



BROOKES BAKER SURVEYORS
930 HICKEY COURT
GRANBURY, TEXAS 76049
(817) 279-0232
(817) 279-9694 FAX
alanh@brookesbakersurveyors.com

Tarrant Co. Bdry. File 6

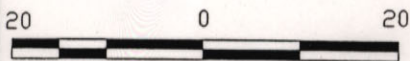
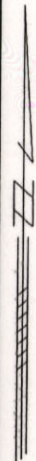
COUNTER 83212

DENTON COUNTY

⊙ 47,520.00 FT. (17,107.200 VRS.)
MP NO. 9
X = 2,371,368.43 FT. (853,692.634 VRS.)
Y = 7,045,876.30 FT. (2,536,515.468 VRS.)

TARRANT
COUNTY

Page 30 of 64
Showing the location of the north line of
Tarrant County and the south line of
Denton County
Surveyed on the ground Decenber 2004
through June 2005
Garey Gilley and BROOKES BAKER
SURVEYORS



GRAPHIC SCALE
FILE NAME: c:\don05\TCL0505.DWG



BROOKES BAKER SURVEYORS
930 HICKEY COURT
GRANBURY, TEXAS 76049
(817) 279-0232
(817) 279-9694 FAX
alanh@brookesbakersurveyors.com

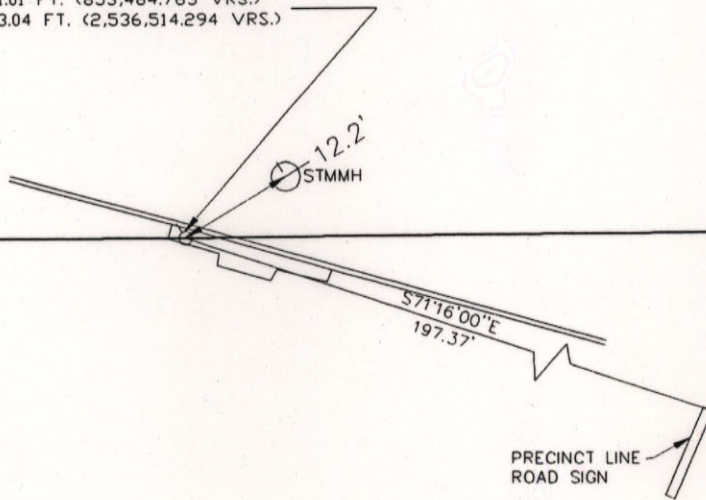
Tarrant Co. Bdry File 6

COUNTER 83213

DENTON COUNTY

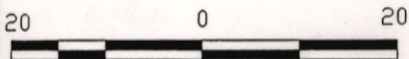
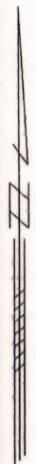
STATE HIGHWAY NO. 114 EAST
BOUND ON RAMP FROM TROPHY
CLUB

@ 48,097.52 FT. (17,315.107 VRS.)
BRASS DISC IN CURB INLET APRIL THROUGH JUNE, 2005
X = 2,370,791.01 FT. (853,484.763 VRS.)
Y = 7,045,873.04 FT. (2,536,514.294 VRS.)



TARRANT COUNTY

Page 31 of 64
Showing the location of the north line of
Tarrant County and the south line of
Denton County
Surveyed on the ground December 2004
through June 2005
Garey Gilley and BROOKES BAKER SURVEYORS



FILE NAME: c:\don05\TCL0505.DWG

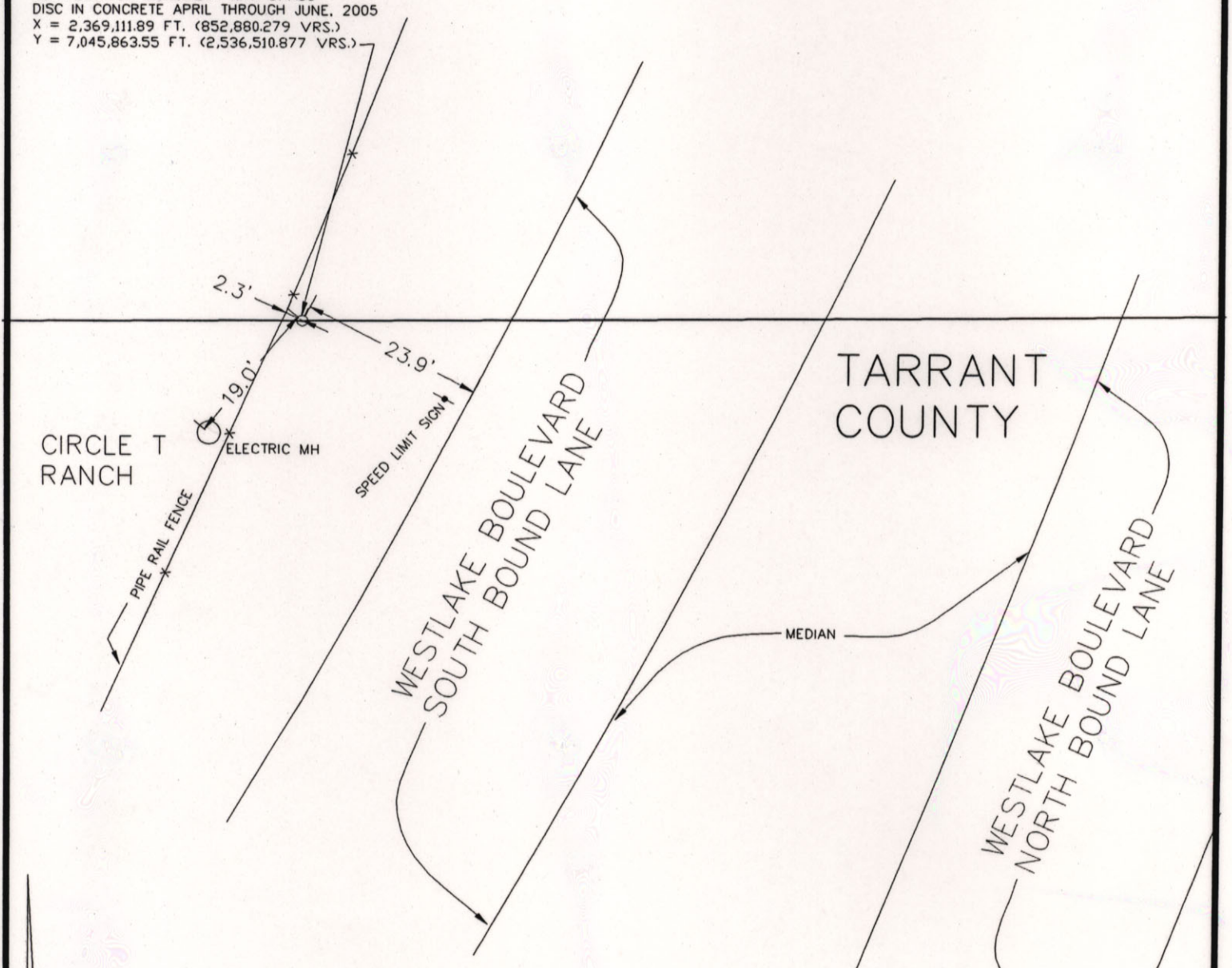
BROOKES BAKER SURVEYORS
930 HICKEY COURT
GRANBURY, TEXAS 76049
(817) 279-0232
(817) 279-9694 FAX
alanh@brookesbakersurveyors.com

Tarrant Co. Bdry. File 6

COUNTER 83214

DENTON COUNTY

⊙ 49,776.93 FT. (17,919.695 VRS.)
SET ALUMINUM MONUMENT WITH BRASS
DISC IN CONCRETE APRIL THROUGH JUNE, 2005
X = 2,369,111.89 FT. (852,880.279 VRS.)
Y = 7,045,863.55 FT. (2,536,510.877 VRS.)



CIRCLE T
RANCH

TARRANT
COUNTY

WESTLAKE BOULEVARD
SOUTH BOUND LANE

WESTLAKE BOULEVARD
NORTH BOUND LANE

MEDIAN

Page 32 of 64
Showing the location of the north line of
Tarrant County and the south line of
Denton County
Surveyed on the ground December 2004
through June 2005
Garey Gilley and BROOKES BAKER
SURVEYORS

20 0 20
GRAPHIC SCALE
FILE NAME: c:\don05\TCL0505.DWG

BROOKES BAKER SURVEYORS
930 HICKEY COURT
GRANBURY, TEXAS 76049
(817) 279-0232
(817) 279-9694 FAX
alanh@brookesbakersurveyors.com

Tarrant Co. Bdry-File 6

COUNTER 83215

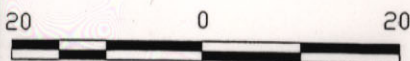
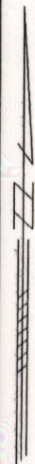
DENTON COUNTY

⊙ 52,800.00 FT. (19,008.00 VRS.)
MP 10 SET ALUMINUM MONUMENT WITH BRASS
DISC IN CONCRETE APRIL THROUGH JUNE, 2005
X = 2,366,089.34 FT. (851,792.162 VRS.)
Y = 7,045,846.46 FT. (2,536,504.726 VRS.)



TARRANT COUNTY

Page 33 of 64
Showing the location of the north line of
Tarrant County and the south line of
Denton County
Surveyed on the ground December 2004
through June 2005
Garey Gilley and BROOKES BAKER
SURVEYORS



GRAPHIC SCALE
FILE NAME: c:\don05\TCL0505.DWG

BROOKES BAKER SURVEYORS
930 HICKEY COURT
GRANBURY, TEXAS 76049
(817) 279-0232
(817) 279-9694 FAX
alanh@brookesbakersurveyors.com

Tarrant Co Bdry. File 6

COUNTER 83216

STATE HIGHWAY NO. 170

DENTON COUNTY

J.T. OTTINGER ROAD

158.4'

17.8'

2.2'

205.20'

PIPE RAIL FENCE

BRIDGE

TARRANT COUNTY

© 56,907.39 FT. (20,486,660 VRS.)
SET ALUMINUM MONUMENT WITH BRASS
DISC IN CONCRETE APRIL THROUGH JUNE, 2005
X = 2,361,982.65 FT. (850,313.753 VRS.)
Y = 7,045,823.24 FT. (2,536,496.366 VRS.)

Page 34 of 64
Showing the location of the north line of
Tarrant County and the south line of
Denton County
Surveyed on the ground Decemeber 2004
through June 2005
Garey Gilley and BROOKES BAKER
SURVEYORS

20 0 20

GRAPHIC SCALE
FILE NAME: c:\don05\TCL0505.DWG

Tarrant Co. Bdry File 6

BROOKES BAKER SURVEYORS
930 HICKEY COURT
GRANBURY, TEXAS 76049
(817) 279-0232
(817) 279-9694 FAX
alanh@brookesbakersurveyors.com

COUNTER 83217

DENTON COUNTY

JESSE GIBSON

A-493 (Den)

A-592 or 593 (T)

@ 58013.14 FEET
20884.731 VARAS

⊙ 58,080.00 FT. (20,908.800 VRS.)
MP 11 SET ALUMINUM MONUMENT WITH BRASS
DISC IN CONCRETE APRIL THROUGH JUNE, 2005
X = 2,360,810.24 FT. (849,891.686 VRS.)
Y = 7,045,816.61 FT. (2,536,493.980 VRS.)

TARRANT COUNTY

SURVEY LINE

JOHN BACON

D-A-1565 T-A-2026

Page 35 of 64

Showing the location of the north line of
Tarrant County and the south line of
Denton County

Surveyed on the ground December 2004
through June 2005

Garey Gilley and BROOKES BAKER
SURVEYORS

BROOKES BAKER SURVEYORS
930 HICKEY COURT
GRANBURY, TEXAS 76049
(817) 279-0232
(817)279-9694 FAX
alanh@brookesbakersurveyors.com

20 0 20

GRAPHIC SCALE
FILE NAME: c:\don05\TCL0505.DWG

Tarrant Co. Bdry File 6

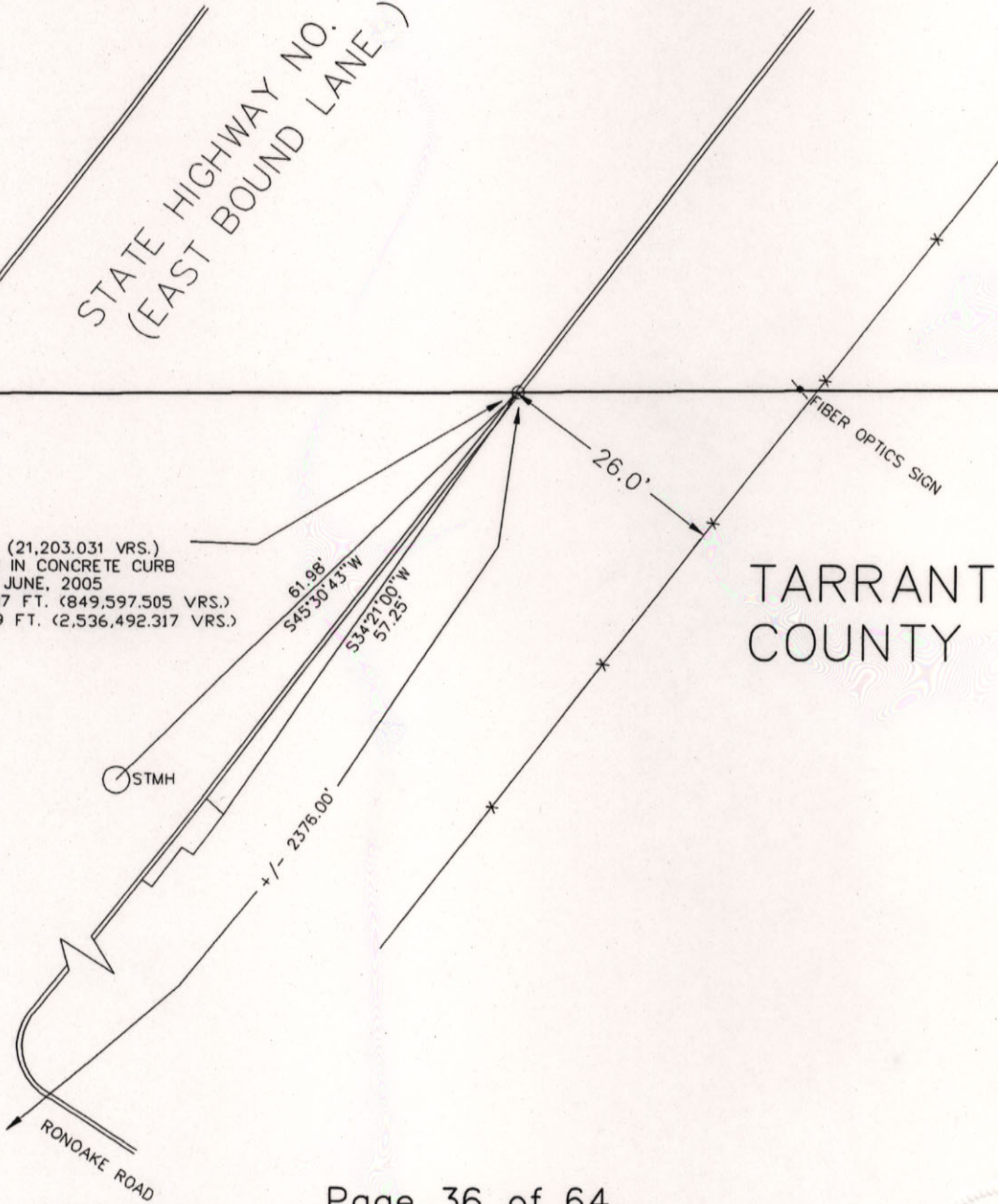
COUNTER 83218

DENTON COUNTY

STATE HIGHWAY NO. 170
(EAST BOUND LANE)

TARRANT COUNTY

© 58,897.31 FT. (21,203.031 VRS.)
SET BRASS DISC IN CONCRETE CURB
APRIL THROUGH JUNE, 2005
X = 2,359,993.07 FT. (849,597.505 VRS.)
Y = 7,045,811.99 FT. (2,536,492.317 VRS.)



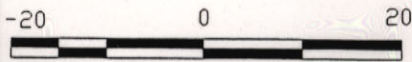
Page 36 of 64

Showing the location of the north line of
Tarrant County and the south line of
Denton County

Surveyed on the ground December 2004
through June 2005

Garey Gilley and BROOKES BAKER
SURVEYORS

BROOKES BAKER SURVEYORS
930 HICKEY COURT
GRANBURY, TEXAS 76049
(817) 279-0232
(817)279-9694 FAX
alanh@brookesbakersurveyors.com



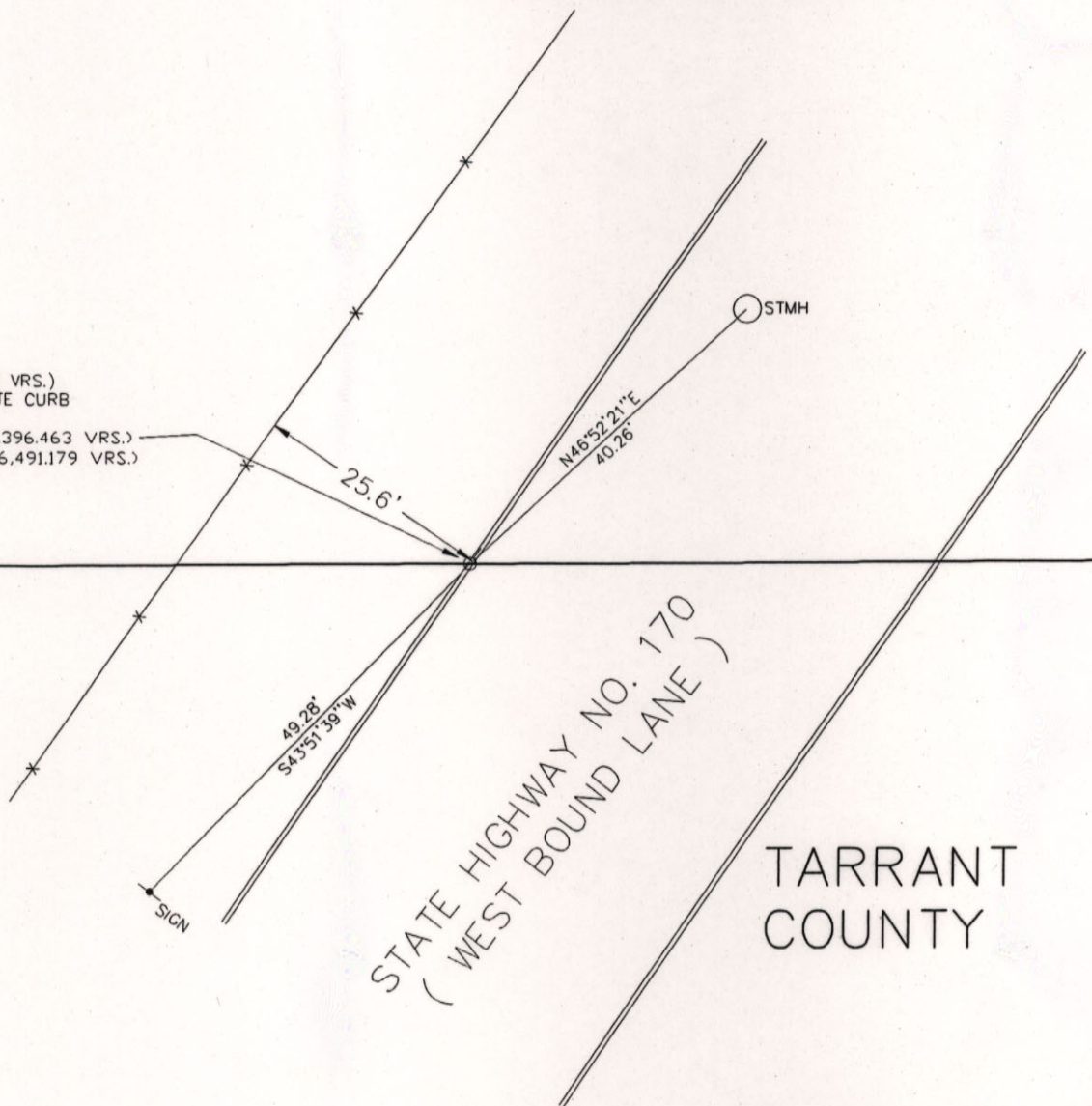
GRAPHIC SCALE
FILE NAME: J:\DQ05\TCL0505.DWG

Tarrant Co. Bdry. File 6

COUNTER 83219

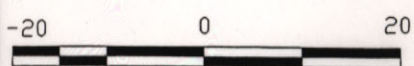
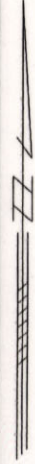
DENTON COUNTY

© 59,455.86 FT. (21,404,109 VRS.)
SET BRASS DISC IN CONCRETE CURB
APRIL THROUGH JUNE, 2005
X = 2,359,434.62 FT. (849,396.463 VRS.)
Y = 7,045,808.83 FT. (2,536,491.179 VRS.)



TARRANT COUNTY

Page 37 of 64
Showing the location of the north line of
Tarrant County and the south line of
Denton County
Surveyed on the ground December 2004
through June 2005
Garey Gilley and BROOKES BAKER
SURVEYORS



GRAPHIC SCALE
FILE NAME: J:\DON05\TCL0505.DWG

BROOKES BAKER SURVEYORS
930 HICKEY COURT
GRANBURY, TEXAS 76049
(817) 279-0232
(817) 279-9694 FAX
alanh@brookesbakersurveyors.com

Tarrant Co. Bdry File 6

COUNTER 83220

PARISH LANE

DENTON COUNTY

© 60,669.12 FT. (21,840.885 VRS.)
SET ALUMINUM MONUMENT WITH
BRASS DISC IN CONCRETE
APRIL THROUGH JUNE, 2005
X = 2,358,221.56 FT. (848,959.761 VRS.)
Y = 7,045,801.98 FT. (2,536,488.713 VRS.)

WILLIAM HUFF

A-519 (Den)

A-648 (T)

TARRANT COUNTY

© 60630.85 FEET
21827.105 VARAS

29.5'

21.5'

SWB SIGN

SURVEY LINE

S. WALNUT STREET

JESSE GIBSON

A-493 (Den)

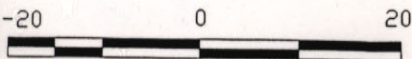
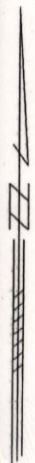
A-592 or 593 (T)

Page 38 of 64

Showing the location of the north line of
Tarrant County and the south line of
Denton County

Surveyed on the ground December 2004
through June 2005

Garey Gilley and BROOKES BAKER
SURVEYORS



GRAPHIC SCALE
FILE NAME: I:\DDN05\TCL0505.DWG

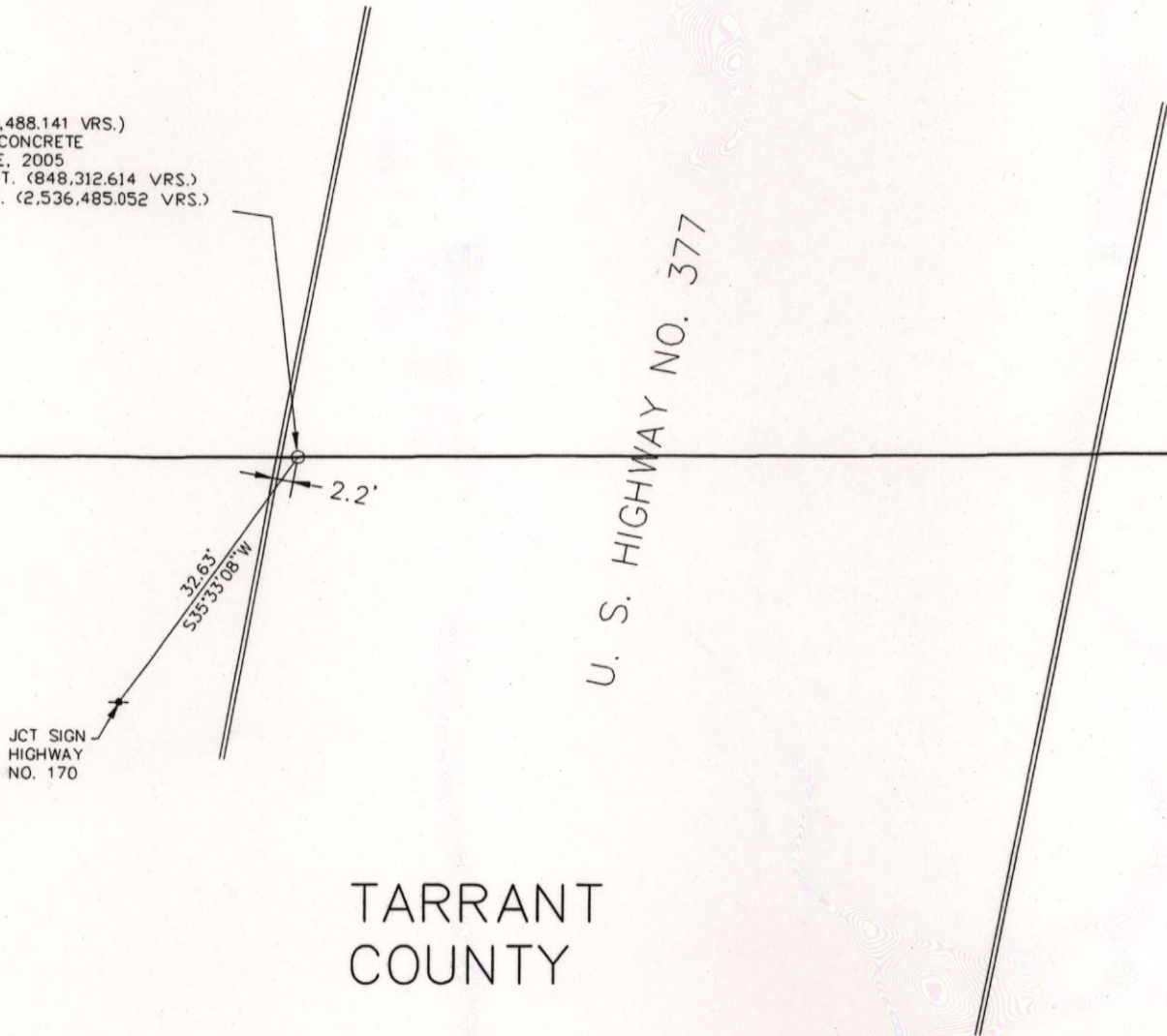
BROOKES BAKER SURVEYORS
930 HICKEY COURT
GRANBURY, TEXAS 76049
(817) 279-0232
(817)279-9694 FAX
alanh@brookesbakersurveyors.com

Tarrant Co. Bdry. File 6

COUNTER 83221

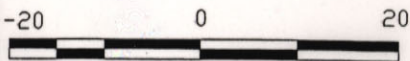
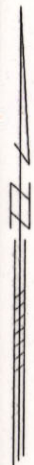
DENTON COUNTY

© 62,467.06 FT. (22,488.141 VRS.)
SET BRASS DISC IN CONCRETE
APRIL THROUGH JUNE, 2005
X = 2,356,423.93 FT. (848,312.614 VRS.)
Y = 7,045,791.81 FT. (2,536,485.052 VRS.)



TARRANT COUNTY

Page 39 of 64
Showing the location of the north line of
Tarrant County and the south line of
Denton County
Surveyed on the ground December 2004
through June 2005
Garey Gilley and BROOKES BAKER
SURVEYORS



GRAPHIC SCALE
FILE NAME: I:\DON05\TCL0505.DWG

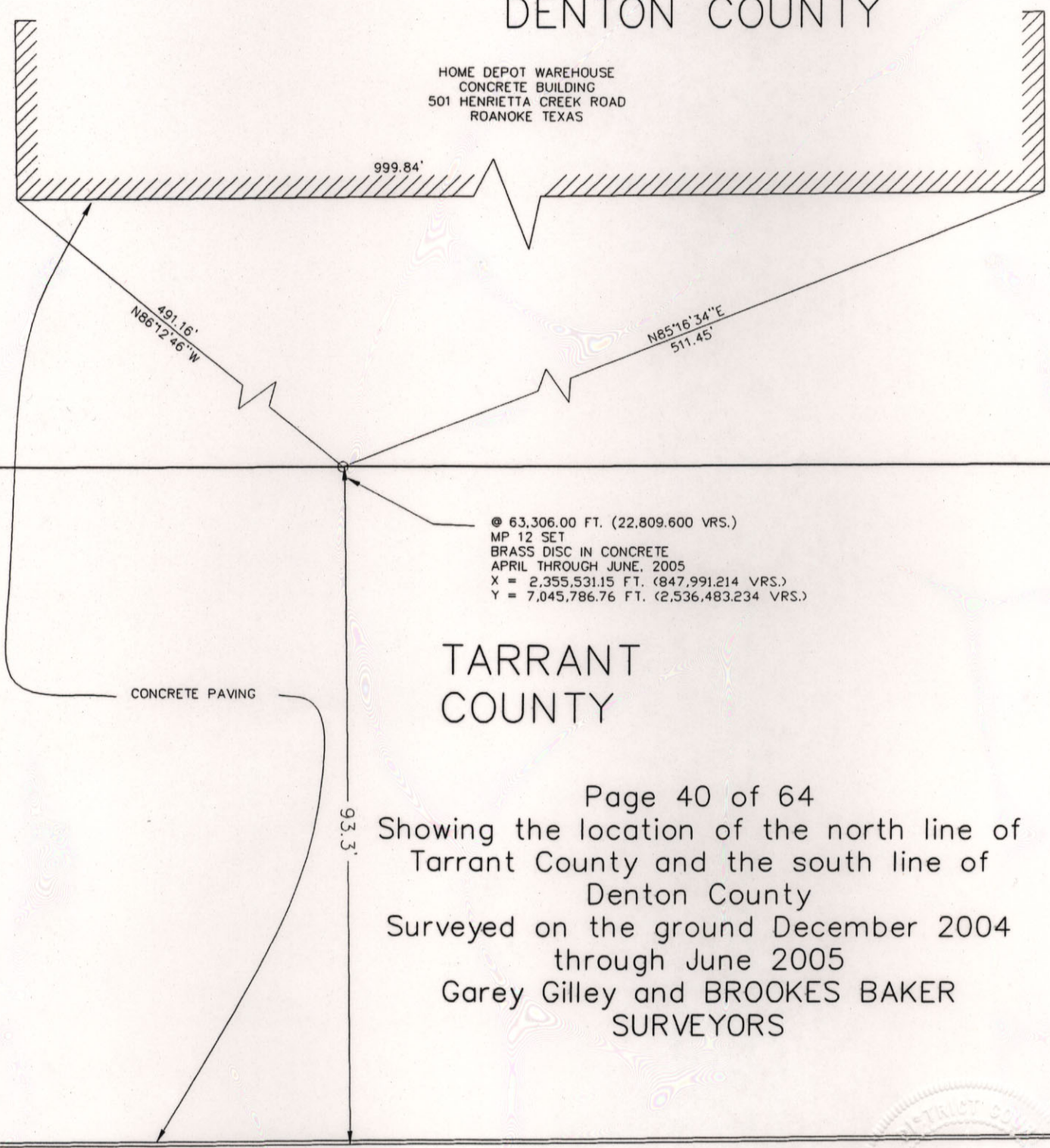
BROOKES BAKER SURVEYORS
930 HICKEY COURT
GRANBURY, TEXAS 76049
(817) 279-0232
(817) 279-9694 FAX
alanh@brookesbakersurveyors.com

Tarrant Co. Bdry File 6

COUNTER 83222

DENTON COUNTY

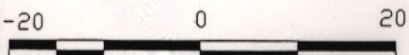
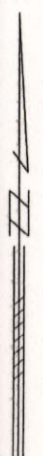
HOME DEPOT WAREHOUSE
CONCRETE BUILDING
501 HENRIETTA CREEK ROAD
ROANOKE TEXAS



⊙ 63,306.00 FT. (22,809.600 VRS.)
MP 12 SET
BRASS DISC IN CONCRETE
APRIL THROUGH JUNE, 2005
X = 2,355,531.15 FT. (847,991.214 VRS.)
Y = 7,045,786.76 FT. (2,536,483.234 VRS.)

TARRANT COUNTY

Page 40 of 64
Showing the location of the north line of
Tarrant County and the south line of
Denton County
Surveyed on the ground December 2004
through June 2005
Garey Gilley and BROOKES BAKER
SURVEYORS



GRAPHIC SCALE
FILE NAME: I:\DON05\TCL0505.DWG



BROOKES BAKER SURVEYORS
930 HICKEY COURT
GRANBURY, TEXAS 76049
(817) 279-0232
(817) 279-9694 FAX
alanh@brookesbakersurveyors.com

Tarrant Co. Bdry. File 6

DENTON COUNTY

© 64,275.50 FT. (23,139.181 VRS.)
SET BRASS DISC IN CONCRETE
APRIL THROUGH JUNE, 2005
X = 2,354,615.80 FT. (847,661.688 VRS.)
Y = 7,045,781.59 FT. (2,536,481.372 VRS.)

0.4'

15.3'

TEX EXPRESS DRIVE
CONCRETE PAVING

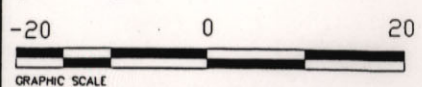
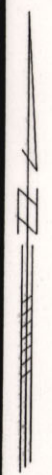
TARRANT COUNTY

Page 41 of 64

Showing the location of the north line of
Tarrant County and the south line of
Denton County

Surveyed on the ground December 2004
through June 2005

Garey Gilley and BROOKES BAKER
SURVEYORS



FILE NAME: I:\DDN05\TCL0505.DWG

Tarrant Co. Bdry. File 6

BROOKES BAKER SURVEYORS
930 HICKEY COURT
GRANBURY, TEXAS 76049
(817) 279-0232
(817) 279-9694 FAX
alanh@brookesbakersurveyors.com

COUNTER 83227

DENTON COUNTY

INDEPENDENCE PARKWAY

DRIVEWAY TO WAREHOUSE

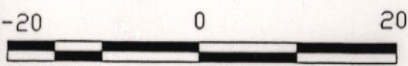
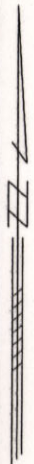
© 68,441.25 FT. (24,638.850 VRS.)
SET BRASS DISC IN CONCRETE CURB
APRIL THROUGH JUNE, 2005
X = 2,350,450.76 FT. (846,162.273 VRS.)
Y = 7,045,758.04 FT. (2,536,472.894 VRS.)

TARRANT COUNTY

Page 42 of 64
Showing the location of the north line of
Tarrant County and the south line of
Denton County
Surveyed on the ground December 2004
through June 2005
Garey Gilley and BROOKES BAKER
SURVEYORS



BROOKES BAKER SURVEYORS
930 HICKEY COURT
GRANBURY, TEXAS 76049
(817) 279-0232
(817)279-9694 FAX
alanh@brookesbakersurveyors.com



GRAPHIC SCALE
FILE NAME: J:\DDN05\TCL0505.DWG



Tarrant Co. Bdry. File 6

COUNTER 83225

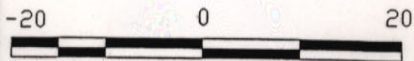
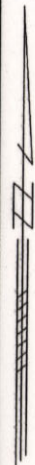
DENTON COUNTY

© 68,640.00 FT. (24,710.400 VRS.)
MP 13 SET ALUMINUM MONUMENT WITH
BRASS DISC IN CONCRETE
APRIL THROUGH JUNE, 2005
X = 2,350,252.05 FT. (846,090.738 VRS.)
Y = 7,045,756.92 FT. (2,536,472.491 VRS.)

TARRANT COUNTY

Page 43 of 64
Showing the location of the north line of
Tarrant County and the south line of
Denton County
Surveyed on the ground December 2004
through June 2005
Garey Gilley and BROOKES BAKER
SURVEYORS

BROOKES BAKER SURVEYORS
930 HICKEY COURT
GRANBURY, TEXAS 76049
(817) 279-0232
(817)279-9694 FAX
alanh@brookesbakersurveyors.com

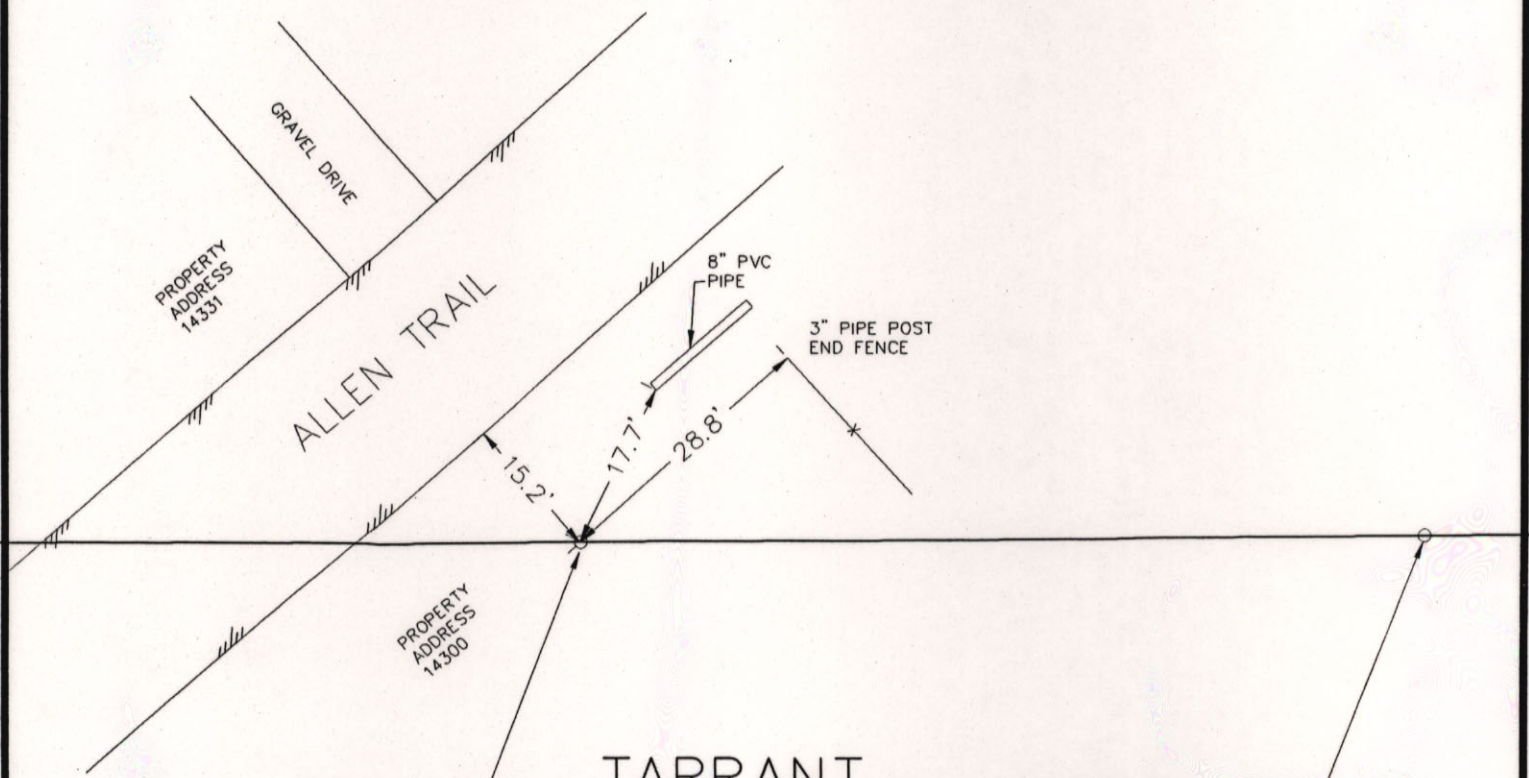


GRAPHIC SCALE
FILE NAME: J:\DON05\TCL0505.DWG

Tarrant Co. Bdry. File 6

COUNTER 83226

DENTON COUNTY



TARRANT COUNTY

@ 74,006.92 FT. (26,642.491 VRS.)
 SET ALUMINUM MONUMENT WITH
 BRASS DISC IN CONCRETE
 APRIL THROUGH JUNE, 2005
 X = 2,344,886.05 FT. (844,158.978 VRS.)
 Y = 7,045,726.58 FT. (2,536,461.569 VRS.)

@73,920.00 FT. (26,611.20 VRS.)
 MP 14
 APRIL THROUGH JUNE, 2005
 X = 2,344,972.97 FT. (844,190.269 VRS.)
 Y = 7,045,727.07 FT. (2,536,461.745 VRS.)

Page 44 of 64
 Showing the location of the north line of
 Tarrant County and the south line of
 Denton County
 Surveyed on the ground December 2004
 through June 2005
 Garey Gilley and BROOKES BAKER
 SURVEYORS



GRAPHIC SCALE
 FILE NAME: I:\DON05\TCL0505.DWG

BROOKES BAKER SURVEYORS
 930 HICKEY COURT
 GRANBURY, TEXAS 76049
 (817) 279-0232
 (817) 279-9694 FAX
 alanb@brookesbakersurveyors.com

Tarrant Co. Bdry File 6

COUNTER 83227

DENTON COUNTY

© 79,200.00FT. (28,512.000 VRS.)
MP 15 SET ALUMINUM MONUMENT WITH
BRASS DISC IN CONCRETE
APRIL THROUGH JUNE, 2005
X = 2,339,693.86 FT. (842,289.790 VRS.)
Y = 7,045,697.23 FT. (2,536,451.003 VRS.)

114.3'

TARRANT COUNTY

PROPERTY ADDRESS
77A OLD DENTON ROAD

OLD DENTON ROAD

Page 45 of 64
Showing the location of the north line of
Tarrant County and the south line of
Denton County
Surveyed on the ground December 2004
through June 2005
Garey Gilley and BROOKES BAKER
SURVEYORS

-20 0 20

GRAPHIC SCALE
FILE NAME: I:\DON05\TCL0505.DWG

BROOKES BAKER SURVEYORS
930 HICKEY COURT
GRANBURY, TEXAS 76049
(817) 279-0232
(817) 279-9694 FAX
alanh@brookesbakersurveyors.com

Tarrant Co. Bdry. File 6

COUNTER 83228

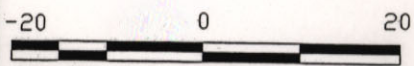
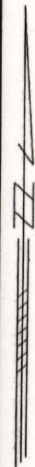
DENTON COUNTY

1-35W SERVICE ROAD
(NORTH BOUND)

⊙ 82,128.44 FT. (29,566.238 VRS.)
SET BRASS DISC IN
CONCRETE CURB
APRIL THROUGH JUNE, 2005
X = 2,336,765.92 FT. (841,235.733 VRS.)
Y = 7,045,680.67 FT. (2,536,445.042 VRS.)

TARRANT
COUNTY

Page 46 of 64
Showing the location of the north line of
Tarrant County and the south line of
Denton County
Surveyed on the ground December 2004
through June 2005
Garey Gilley and BROOKES BAKER
SURVEYORS



GRAPHIC SCALE
FILE NAME: I:\DON05\TCL0505.DWG



BROOKES BAKER SURVEYORS
930 HICKEY COURT
GRANBURY, TEXAS 76049
(817) 279-0232
(817) 279-9694 FAX
alanh@brookesbakersurveyors.com

Tarrant Co. Bdry. File 6

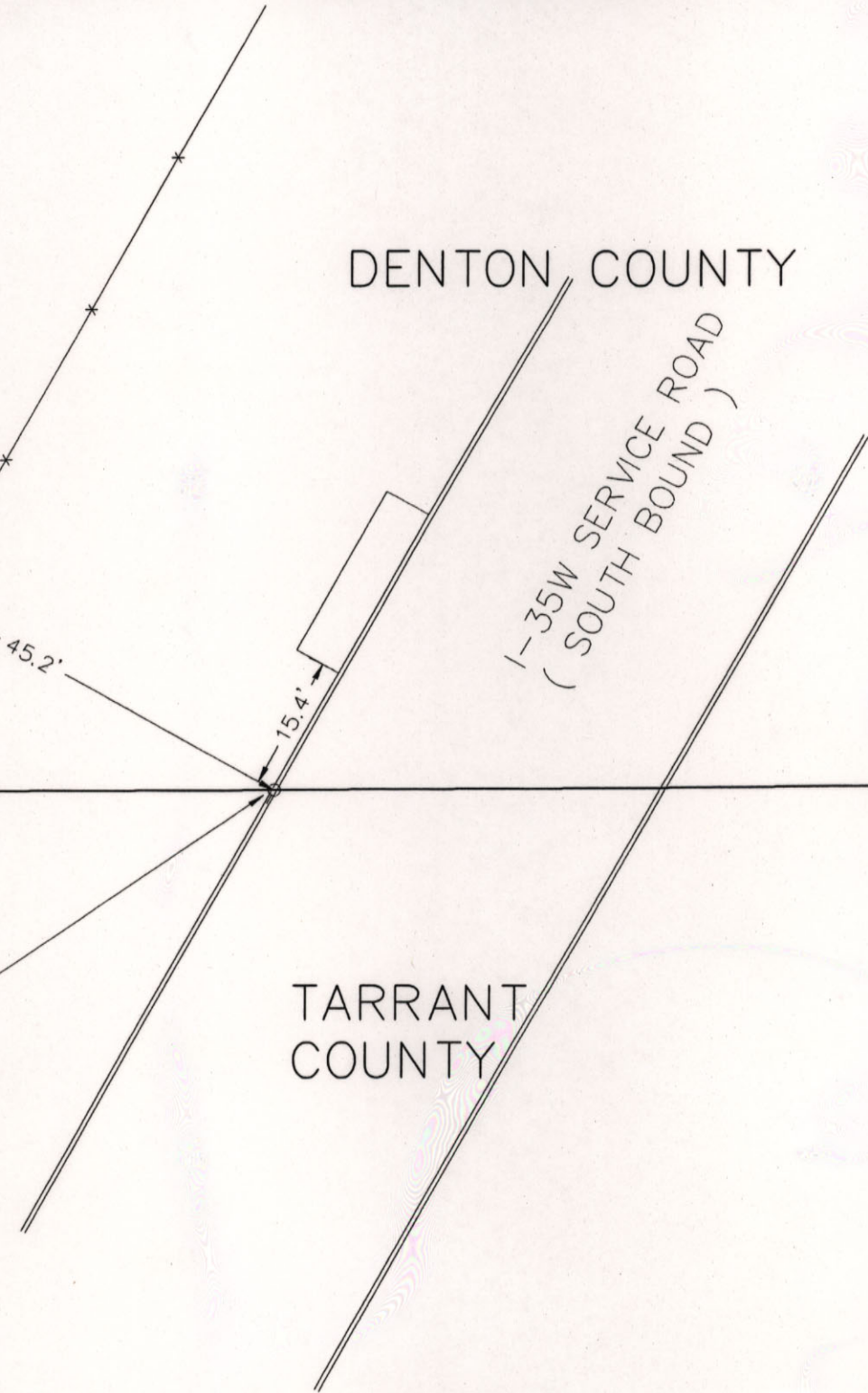
COUNTER 83229

DENTON COUNTY

I-35W SERVICE ROAD
(SOUTH BOUND)

TARRANT COUNTY

© 82,543.71 FT. (29,715.736 VRS.)
SET BRASS DISC IN
CONCRETE CURB
APRIL THROUGH JUNE, 2005
X = 2,336,350.73 FT. (841,086.262 VRS.)
Y = 7,045,678.33 FT. (2,536,444.199 VRS.)

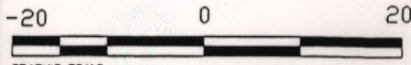
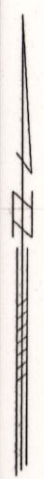


Page 47 of 64

Showing the location of the north line of
Tarrant County and the south line of
Denton County

Surveyed on the ground December 2004
through June 2005

Garey Gilley and BROOKES BAKER
SURVEYORS



GRAPHIC SCALE
FILE NAME: I:\DON05\TCL0505.DWG

BROOKES BAKER SURVEYORS
930 HICKEY COURT
GRANBURY, TEXAS 76049
(817) 279-0232
(817) 279-9694 FAX
alanh@brookesbakersurveyors.com

Tarrant Co. Bdry. File 6

COUNTER 83230

DENTON COUNTY

WORLD WIDE DRIVE

HERITAGE PARKWAY

N02°45'56"W
111.82

31.48
N33°42'07"E

• 83,903.18 FT. (30,205.144 VRS.)
SET BRASS DISC IN
CONCRETE CURB
APRIL THROUGH JUNE, 2005
X = 2,334,991.49 FT. (840,596.936 VRS.)
Y = 7,045,670.64 FT. (2,536,441.43 VRS.)

S21°52'56"W
39.52

TARRANT COUNTY

FH

Page 48 of 64

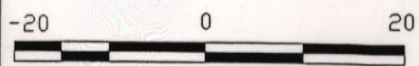
Showing the location of the north line of
Tarrant County and the south line of
Denton County

Surveyed on the ground December 2004 through
June 2005

Gary Gilley and BROOKES BAKER SURVEYORS

BROOKES BAKER SURVEYORS
930 HICKEY COURT
GRANBURY, TEXAS 76049
(817) 279-0232
(817) 279-9694 FAX
alanh@brookesbakersurveyors.com

Tarrant Co. Bdry. File 6



GRAPHIC SCALE
FILE NAME: J:\DDN05\TCL0505.DWG

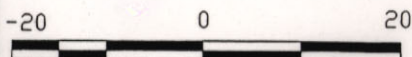
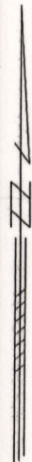
COUNTER 83231

DENTON COUNTY

⊙ 84,480.00 FT. (30,412.80 VRS.)
MP 16 SET ALUMINUM MONUMENT WITH
BRASS DISC IN CONCRETE
APRIL THROUGH JUNE, 2005
X = 2,334,414.77 FT. (840,389.317 VRS.)
Y = 7,045,667.38 FT. (2,536,440.257 VRS.)

TARRANT
COUNTY

Page 49 of 64
Showing the location of the north line of
Tarrant County and the south line of
Denton County
Surveyed on the ground December 2004
through June 2005
Garey Gilley and BROOKES BAKER
SURVEYORS



GRAPHIC SCALE

FILE NAME: J:\DDN05\TCL0505.DWG



BROOKES BAKER SURVEYORS
930 HICKEY COURT
GRANBURY, TEXAS 76049
(817) 279-0232
(817) 279-9694 FAX
alanh@brookesbakersurveyors.com

Tarrant Co. Bdry. File 6

COUNTER 83232

DENTON COUNTY

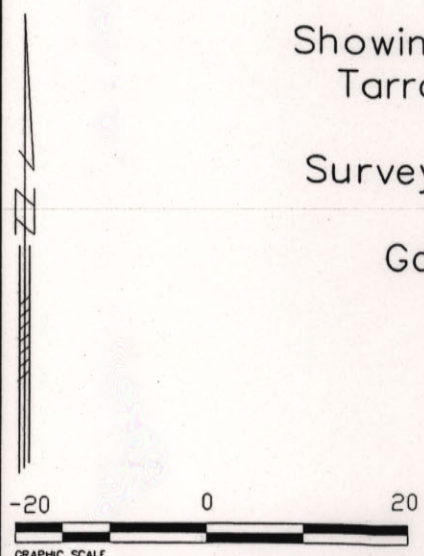
TARRANT COUNTY

© 87,600.41 FT. (31,536.148 VRS.)
SET BRASS DISC IN CONCRETE
APRIL THROUGH JUNE, 2005
X = 2,331,294.889 FT. (839,266.160 VRS.)
Y = 7,045,649.74 FT. (2,536,433.91 VRS.)

EAST PERIMETER ROAD
CONCRETE PAVING
ALLIANCE AIRPORT

53.5'

Page 50 of 64
Showing the location of the north line of
Tarrant County and the south line of
Denton County
Surveyed on the ground December 2004
through June 2005
Garey Gilley and BROOKES BAKER
SURVEYORS



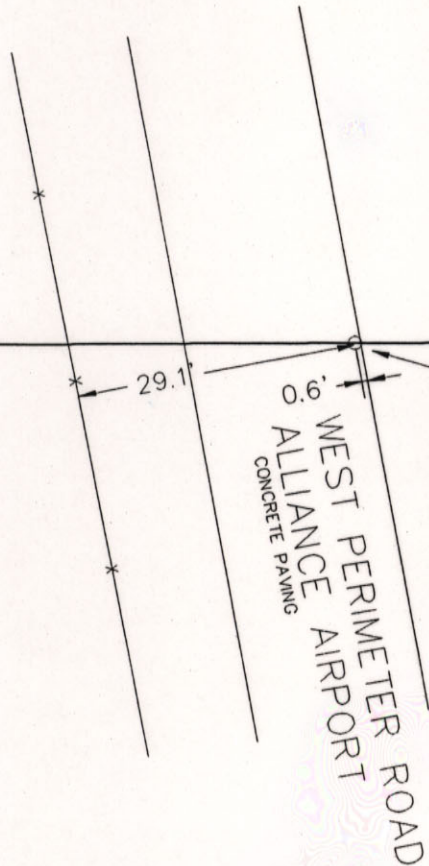
GRAPHIC SCALE
FILE NAME: J:\DQ05\TCL0505.DWG

BROOKES BAKER SURVEYORS
930 HICKEY COURT
GRANBURY, TEXAS 76049
(817) 279-0232
(817) 279-9694 FAX
alanh@brookesbakersurveyors.com

Tarrant Co. Bdry. File 6

COUNTER 83233

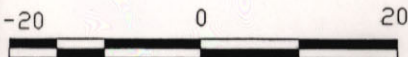
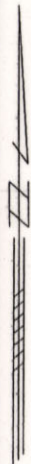
DENTON COUNTY



⊙ 89,039.13 FT. (32,054.086 VRS.)
SET BRASS DISC IN CONCRETE
APRIL THROUGH JUNE, 2005
X = 2,329,856.42 FT. (838,748.309 VRS.)
Y = 7,045,641.61 FT. (2,536,430.980 VRS.)

TARRANT COUNTY

Page 51 of 64
Showing the location of the north line of
Tarrant County and the south line of
Denton County
Surveyed on the ground December 2004
through June 2005
Garey Gilley and BROOKES BAKER
SURVEYORS



GRAPHIC SCALE
FILE NAME: I:\DON05\TCL0505.DWG



BROOKES BAKER SURVEYORS
930 HICKEY COURT
GRANBURY, TEXAS 76049
(817) 279-0232
(817) 279-9694 FAX
alanh@brookesbakersurveyors.com

Tarrant Co. Bdry. File 6

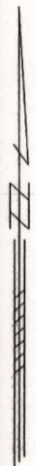
COUNTER 83231

DENTON COUNTY

⊙ 89,760.00 FT. (32,313.60 VRS.)
MP 17 SET ALUMINUM MONUMENT WITH
BRASS DISC IN CONCRETE
APRIL THROUGH JUNE, 2005
X = 2,329,135.68 FT. (838,488.844 VRS.)
Y = 7,045,637.53 FT. (2,536,429.511 VRS.)

TARRANT COUNTY

Page 52 of 64
Showing the location of the north line of
Tarrant County and the south line of
Denton County
Surveyed on the ground December 2004
through June 2005
Garey Gilley and BROOKES BAKER
SURVEYORS



-20 0 20

GRAPHIC SCALE
FILE NAME: J:\DON05\TCL0505.DWG

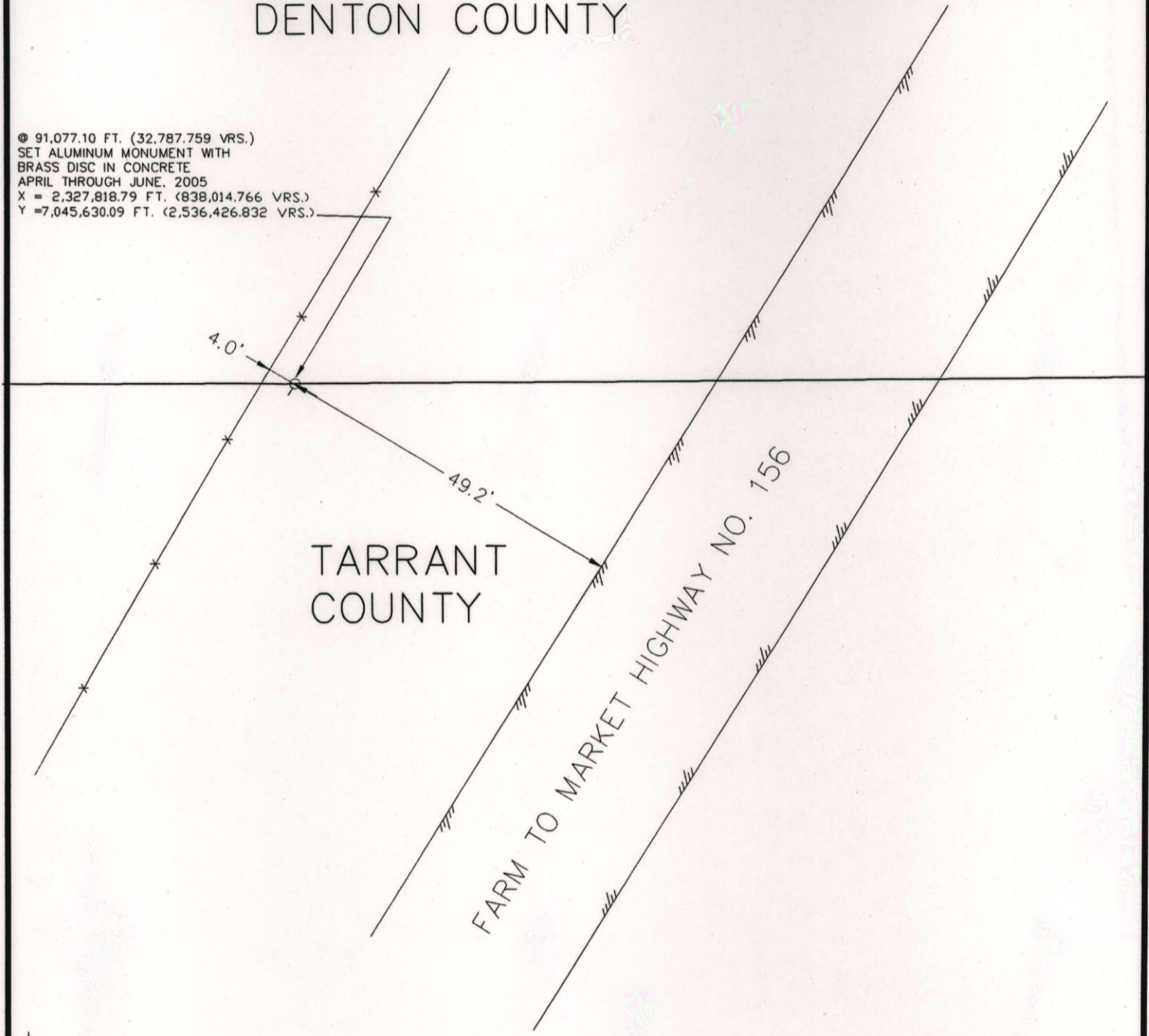
BROOKES BAKER SURVEYORS
930 HICKEY COURT
GRANBURY, TEXAS 76049
(817) 279-0232
(817)279-9694 FAX
alanh@brookesbakersurveyors.com

Tarrant Co. Bdry. File 6

COUNTER 83235

DENTON COUNTY

© 91,077.10 FT. (32,787.759 VRS.)
SET ALUMINUM MONUMENT WITH
BRASS DISC IN CONCRETE
APRIL THROUGH JUNE, 2005
X = 2,327,818.79 FT. (838,014.766 VRS.)
Y = 7,045,630.09 FT. (2,536,426.832 VRS.)



TARRANT
COUNTY

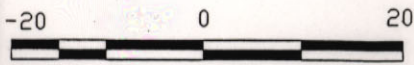
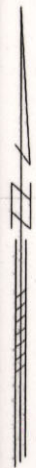
FARM TO MARKET HIGHWAY NO. 156

Page 53 of 64

Showing the location of the north line of
Tarrant County and the south line of
Denton County

Surveyed on the ground December 2004
through June 2005

Garey Gilley and BROOKES BAKER
SURVEYORS



GRAPHIC SCALE
FILE NAME: I:\D0N05\TCL0505.DWG

BROOKES BAKER SURVEYORS
930 HICKEY COURT
GRANBURY, TEXAS 76049
(817) 279-0232
(817) 279-9694 FAX
alanh@brookesbakersurveyors.com

Tarrant Co. Bdry. File 6

COUNTER B3236

DENTON COUNTY

@ 95.040.00 FT. (34,214.400 VRS.)
MP 18 SET BRASS DISC IN CONCRETE
APRIL THROUGH JUNE, 2005
X = 2,323,856.58 FT. (836,588.369 VRS.)
Y = 7,045,607.69 FT. (2,536,418.768 VRS.)

N19°53'49"E
581.11'

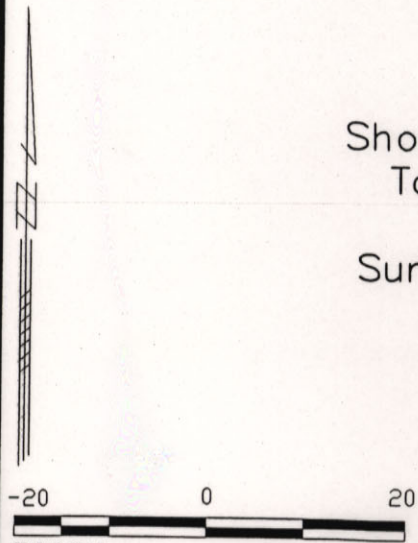
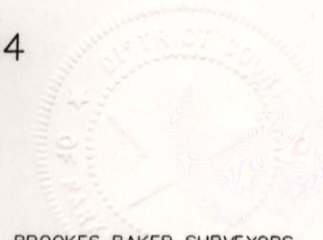
JC PENNY'S
WAREHOUSE

CONCRETE PAVING

S67°53'31"E
220.12'

TARRANT
COUNTY

Page 54 of 64
Showing the location of the north line of
Tarrant County and the south line of
Denton County
Surveyed on the ground December 2004
through June 2005
Garey Gilley and BROOKES BAKER
SURVEYORS



GRAPHIC SCALE
FILE NAME: I:\DON05\TCL0505.DWG

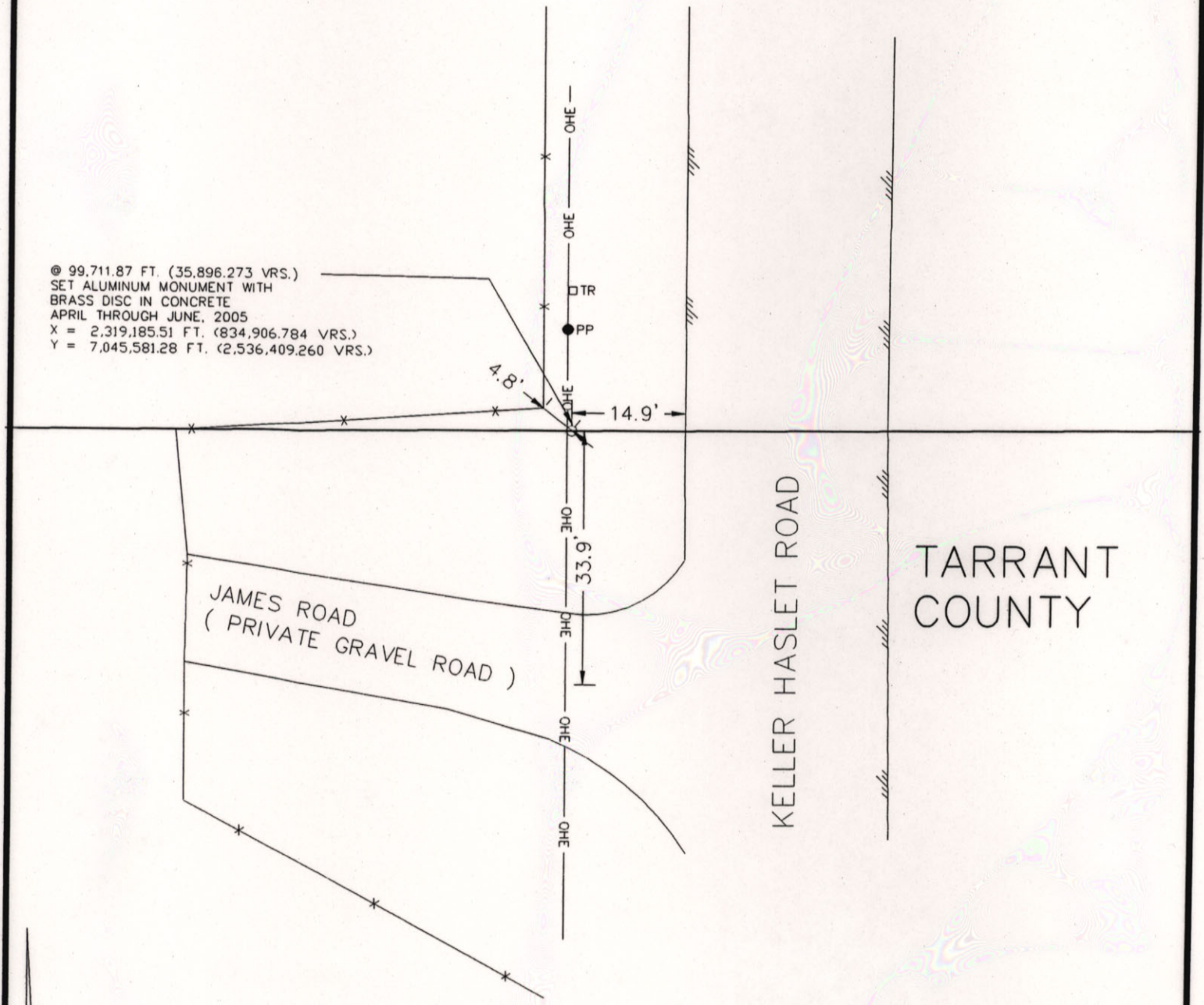
BROOKES BAKER SURVEYORS
930 HICKEY COURT
GRANBURY, TEXAS 76049
(817) 279-0232
(817) 279-9694 FAX
alanh@brookesbakersurveyors.com

Tarrant Co. Bdry. File 6

COUNTER 83237

DENTON COUNTY

@ 99,711.87 FT. (35,896.273 VRS.)
SET ALUMINUM MONUMENT WITH
BRASS DISC IN CONCRETE
APRIL THROUGH JUNE, 2005
X = 2,319,185.51 FT. (834,906.784 VRS.)
Y = 7,045,581.28 FT. (2,536,409.260 VRS.)



TARRANT COUNTY

KELLER HASLET ROAD

JAMES ROAD
(PRIVATE GRAVEL ROAD)

Page 55 of 64

Showing the location of the north line of
Tarrant County and the south line of
Denton County

Surveyed on the ground December 2004
through June 2005

Garey Gilley and BROOKES BAKER
SURVEYORS

-20 0 20

GRAPHIC SCALE

FILE NAME: J:\DDN05\TCL0505.DWG

BROOKES BAKER SURVEYORS
930 HICKEY COURT
GRANBURY, TEXAS 76049
(817) 279-0232
(817) 279-9694 FAX
alanh@brookesbakersurveyors.com

Tarrant Co. Bdry. File 6

COUNTER 83238

DENTON COUNTY

© 100,320.00 FT. (36,115.200 VRS.)
MP 19 SET ALUMINUM MONUMENT WITH
BRASS DISC IN CONCRETE
APRIL THROUGH JUNE, 2005
X = 2,318,577.48 FT. (834,687.893 VRS.)
Y = 7,045,577.84 FT. (2,536,408.022 VRS.)

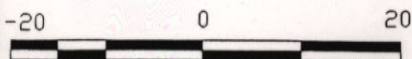
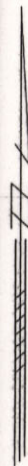
RAMSEY RANCH

TARRANT
COUNTY

Page 56 of 64
Showing the location of the north line of
Tarrant County and the south line of
Denton County

Surveyed on the ground December 2004
through June 2005

Garey Gilley and BROOKES BAKER
SURVEYORS



GRAPHIC SCALE
FILE NAME: J:\DON05\TCL0505.DWG



BROOKES BAKER SURVEYORS
930 HICKEY COURT
GRANBURY, TEXAS 76049
(817) 279-0232
(817) 279-9694 FAX
alanh@brookesbakersurveyors.com

Tarrant Co. Bdry. File 6

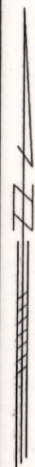
DENTON COUNTY

@ 105,600.00 FT. (38,016.00 VRS.)
MP 20 SET ALUMINUM MONUMENT WITH
BRASS DISC IN CONCRETE
APRIL THROUGH JUNE, 2005
X = 2,313,298.38 FT. (832,787.417 VRS.)
Y = 7,045,548.00 FT. (2,536,397.280 VRS.)

RAMSEY RANCH

TARRANT COUNTY

Page 57 of 64
Showing the location of the north line of
Tarrant County and the south line of
Denton County
Surveyed on the ground December 2004
through June 2005
Garey Gilley and BROOKES BAKER
SURVEYORS



-20 0 20

GRAPHIC SCALE

FILE NAME: J:\DON05\TCL0505.DWG

Tarrant Co. Bdry. File 6

BROOKES BAKER SURVEYORS
930 HICKEY COURT
GRANBURY, TEXAS 76049
(817) 279-0232
(817) 279-9694 FAX
alanh@brookesbakersurveyors.com

COUNTER 83270

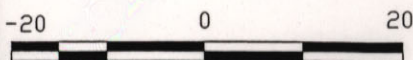
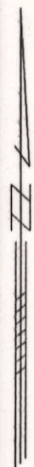
DENTON COUNTY

© 110,880.00 FT. (39,916.800 VRS.)
MP 21 SET ALUMINUM MONUMENT WITH
BRASS DISC IN CONCRETE
APRIL THROUGH JUNE, 2005
X = 2,308,019.29 FT. (830,886.944 VRS.)
Y = 7,045,518.15 FT. (2,536,386.534 VRS.)

RAMSEY RANCH

TARRANT
COUNTY

Page 58 of 64
Showing the location of the north line of
Tarrant County and the south line of
Denton County
Surveyed on the ground December 2004
through June 2005
Garey Gilley and BROOKES BAKER
SURVEYORS



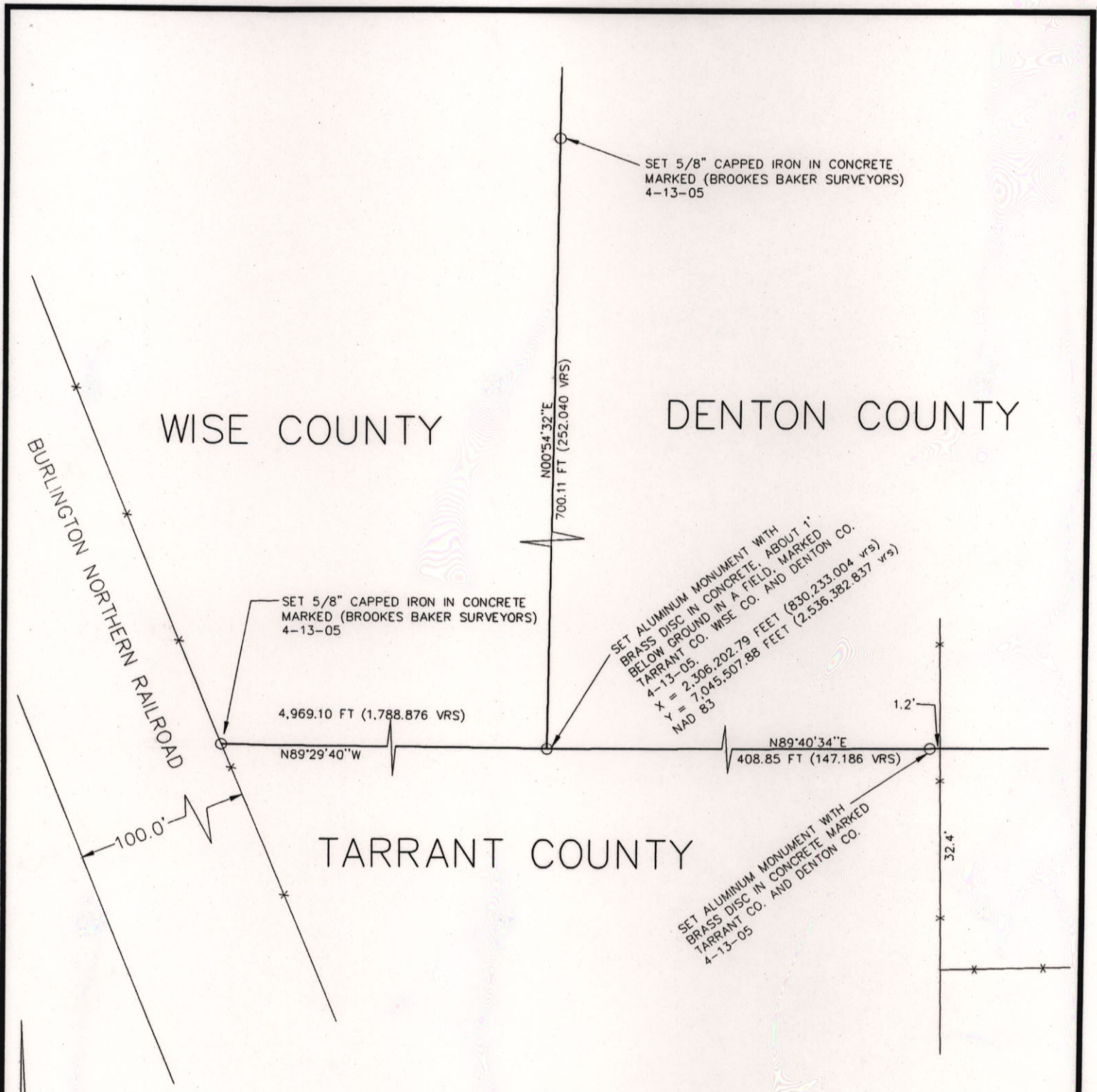
GRAPHIC SCALE
FILE NAME: J:\DDN05\TCL0505.DWG



BROOKES BAKER SURVEYORS
930 HICKEY COURT
GRANBURY, TEXAS 76049
(817) 279-0232
(817) 279-9694 FAX
alanh@brookesbakersurveyors.com

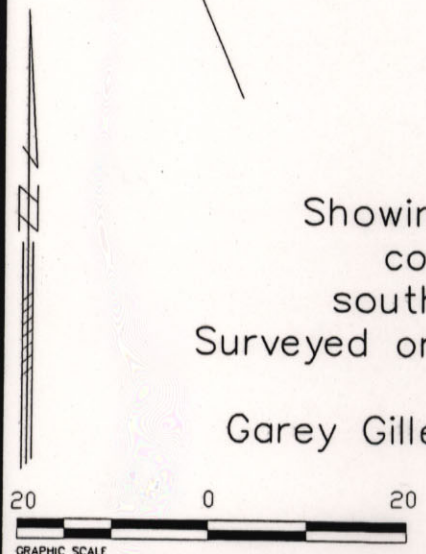
Tarrant Co. Bdry. File 6

COUNTER 83241



Page 59 of 64
 Showing the location of the southeast
 corner of Wise County and the
 southwest corner of Denton County
 Surveyed on the ground December 2004 through
 June 2005

Garey Gilley and BROOKES BAKER SURVEYORS



BROOKES BAKER SURVEYORS
 930 HICKEY COURT
 GRANBURY, TEXAS 76049
 (817) 279-0232
 (817) 279-9694 FAX
 alan@brookesbakersurveyors.com

Tarrant G. Bdry File 6

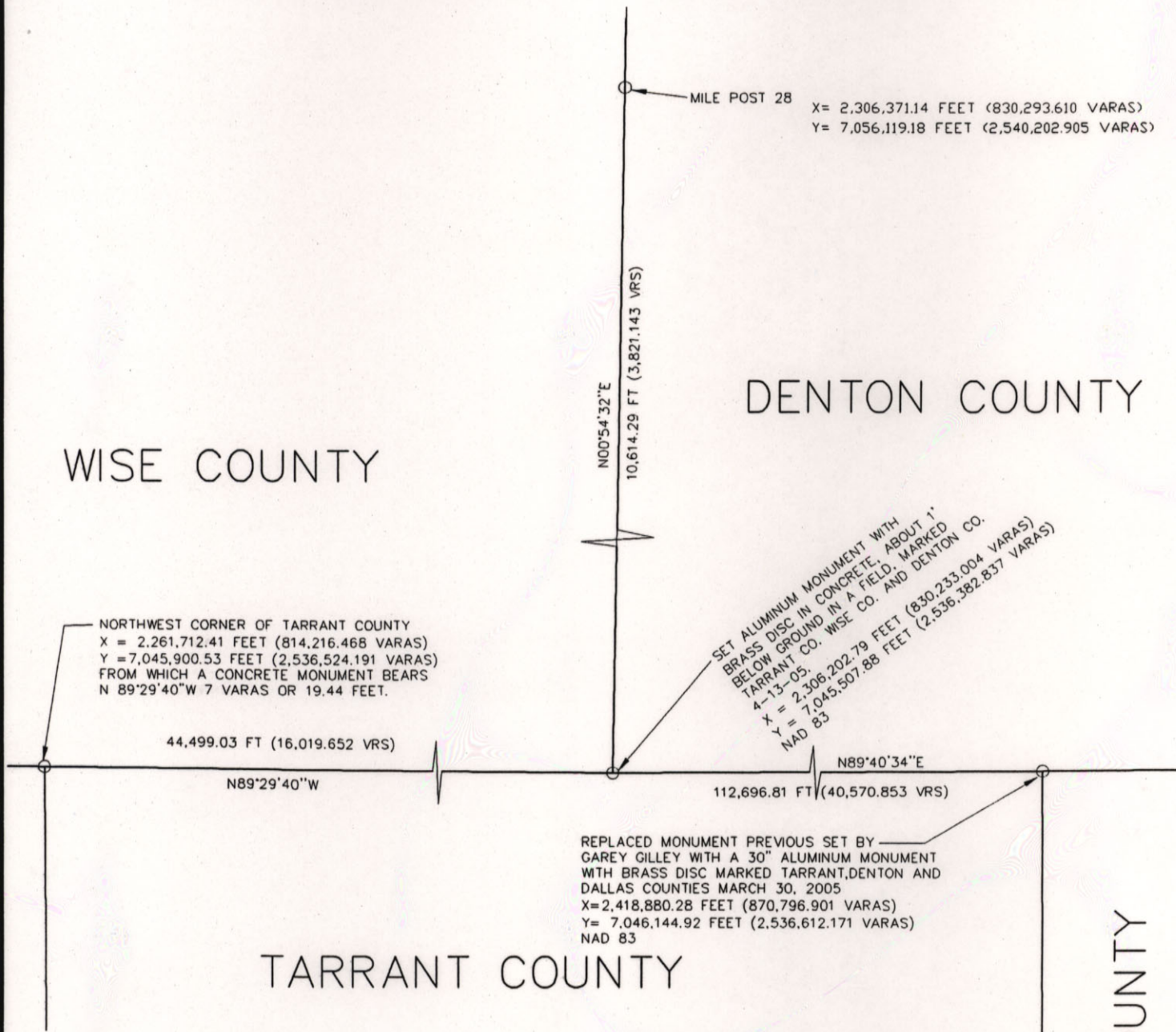
COUNTER 83242

WISE COUNTY

DENTON COUNTY

TARRANT COUNTY

DALLAS COUNTY



NORTHWEST CORNER OF TARRANT COUNTY
 X = 2,261,712.41 FEET (814,216.468 VARAS)
 Y = 7,045,900.53 FEET (2,536,524.191 VARAS)
 FROM WHICH A CONCRETE MONUMENT BEARS
 N 89°29'40"W 7 VARAS OR 19.44 FEET.

44,499.03 FT (16,019.652 VRS)

N89°29'40"W

112,696.81 FT (40,570.853 VRS)

N89°40'34"E

REPLACED MONUMENT PREVIOUS SET BY
 GAREY GILLEY WITH A 30" ALUMINUM MONUMENT
 WITH BRASS DISC MARKED TARRANT, DENTON AND
 DALLAS COUNTIES MARCH 30, 2005
 X=2,418,880.28 FEET (870,796.901 VARAS)
 Y= 7,046,144.92 FEET (2,536,612.171 VARAS)
 NAD 83

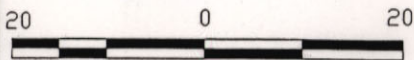
SET ALUMINUM MONUMENT WITH
 BRASS DISC IN CONCRETE, ABOUT 1'
 BELOW GROUND IN A FIELD, MARKED
 TARRANT CO. WISE CO. AND DENTON CO.
 4-13-05.
 X = 2,306,202.79 FEET (830,233.004 VARAS)
 Y = 7,045,507.88 FEET (2,536,382.837 VARAS)
 NAD 83

Page 60 of 64

Showing the location of the southeast corner of Wise County and the Northwest and Northeast corners of Tarrant County, Texas

Surveyed on the ground December 2004 through June 2005

Garey Gilley and BROOKES BAKER SURVEYORS



GRAPHIC SCALE
 FILE NAME: C:\DON05\TCL0505.DWG

BROOKES BAKER SURVEYORS
 930 HICKEY COURT
 GRANBURY, TEXAS 76049
 (817) 279-0232
 (817)279-9694 FAX
 alonh@brookesbakersurveyors.com

Tarrant Co. Bdry. File 6

COUNTER 83293

June 27, 2005
Page 61 of 64

NO. 44051

TARRANT COUNTY,	§	IN THE DISTRICT COURT
	§	
Plaintiff,	§	
	§	
v.	§	PARKER COUNTY,
TEXAS	§	
	§	
DENTON COUNTY,	§	
	§	
Defendant.	§	43RD JUDICIAL DISTRICT

SURVEYOR'S CERTIFICATE

STATE OF TEXAS	§
	§
COUNTY OF TARRANT	§

Pursuant to my appointment by the Judge of the 43rd District Court of Parker County, Texas, as set out in the Modified and Corrected Final Judgment in Cause No. 44051, dated and signed on April 6, 2004 (the "Judgment") I hereby certify as follows:

- Attached hereto are the field notes and plat or diagram I have prepared in the Tarrant County-Denton County boundary line reflecting my survey of said boundary line undertaken by me pursuant to the Judgement.
- The survey was conducted by me with the assistance of the following named field survey personnel:
Don W. Hickey, RPLS Number 1961
Alan W. Hickey, RPLS Number 5420

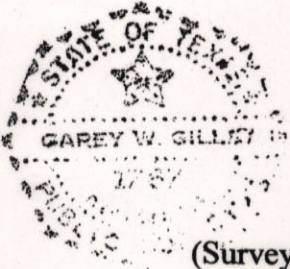
3. The survey was conducted by me in the field during the months of December, 2004 through June, 2005.
4. The survey field notes state the State Plane Coordinates based on the Texas Coordinate System of 1983 values for the beginning point on the survey, as well as at all locations of markers and other significant locations, with appropriate reference to zone, mapping angle, grid distances, acreage, boundary corners, angle points, and points of curvature or tangency, and the N.G.S. Station to which the survey is tied.
5. The survey field notes and plat or diagram described the initial corners of the boundary line at the northwest corner of Dallas County/northeast corner of Tarrant County and at the southeast corner of Wise County/southwest corner of Denton County, and each corner has been marked by a permanent survey marker as required by 22 TAC §§ 663.11 and 663.17 and TEX. LOC. GOV'T CODE # 72.004 consisting of brass markers on the surface attached to foundations or bases set at sufficient depth to retain a stable and distinctive location and are of sufficient size and material to withstand the deteriorating forces of nature.



6. The survey field notes and plat or diagram describe each prominent natural object and public roadway that are crossed by or are adjacent to the boundary line as well as the corners and lines of surveys on or near the boundary line. Permanent surveys markers as required by 22 TAC ## 663.11 and 663.17 and TEX. LOC. GOV'T CODE # 72.004 have been set at the required locations, where practical, with the locations of the survey markers noted in the field notes and shown on the plat.
7. The survey field notes and plat or diagram described the location of each one-mile interval along the boundary line and each such location is marked on the ground with a permanent survey marker, where practical, as required by 22 TAC ## 663.11 and 663.17 and TEX. LOC. GOV'T CODE # 72.004.
8. All markers set by me in the survey are stamped with my registration number as a Registered Professional Land Surveyor certified by the Texas Board of Professional Land Surveying.
9. This survey has been described by proper field notes with the necessary calls and connections for identification, observing Spanish measurement by varas.



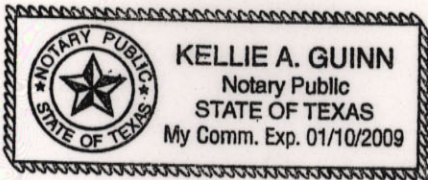
10. I certify that this survey was actually made in the field by me according to law, including Tex. Nat. Res. Code ## 21.041 and 21.042 as well as the regulations and other statutes stated herein, and that this survey is correct and follows the Court's instructions stated in the Judgement.



(Surveyor's Seal)

Garey W. Gilley
GAREY W. GILLEY, LSLs,
RPLS Registration # 1767

SWORN TO AND SUBSCRIBED TO BEFORE ME, on this 27th day of June, 2005, to certify which witness my hand and seal of office.



NOTARY PUBLIC, STATE OF TEXAS

Kellie A. Guinn

State of Texas)	
County of Parker)	
I certify that the foregoing, consisting of <u>64</u> pages, is a true, correct and complete copy of the instrument of record in my possession. This <u>27th</u> day of <u>June</u> , 20 <u>05</u>	
ELVERA M. JOHNSON, DISTRICT CLERK	
By: <u>Pat Hamilton</u>	Deputy