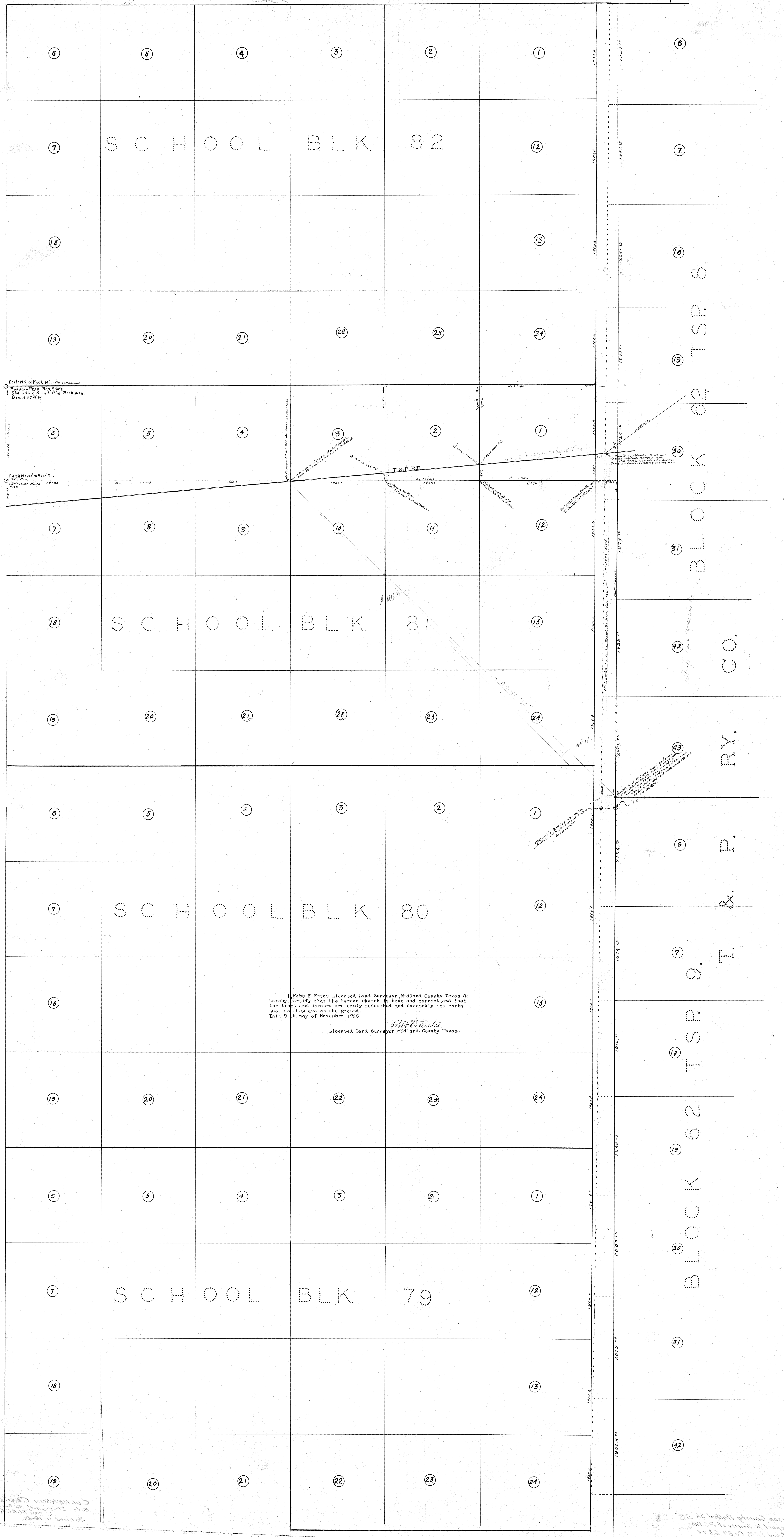


CULBERSON COUNTY SURVEY

Received in General Land Office
November 15th 1928 - J. P. Robinson, Com. Sec.

15
SCHOOL BLK 85



Robt F. Estes Licensed Land Surveyor, Midland County Texas, do hereby certify that the herein sketch is true and correct and that the lines and corners are truly described and correctly set forth just as they are on the ground.
This 9th day of November 1928
R. F. Estes
Licensed Land Surveyor, Midland County Texas.

Culberson County, Texas
Received in General Land Office
November 15th 1928

Culberson County, Texas
Received in General Land Office
November 15th 1928

CULBERSON COUNTY SKETCH

Culberson County 30
Estes St. P.S. Blks. 80-1-2 & T.F.R.R. Co. Blk. 62 & 8
Recd. 11-15-28

SCHOOL BLK 85

BLOCK 85 1ST 8

BL' CO.

BY

P

T

BLOCK 85 1ST 8

SCHOOL BLK 85

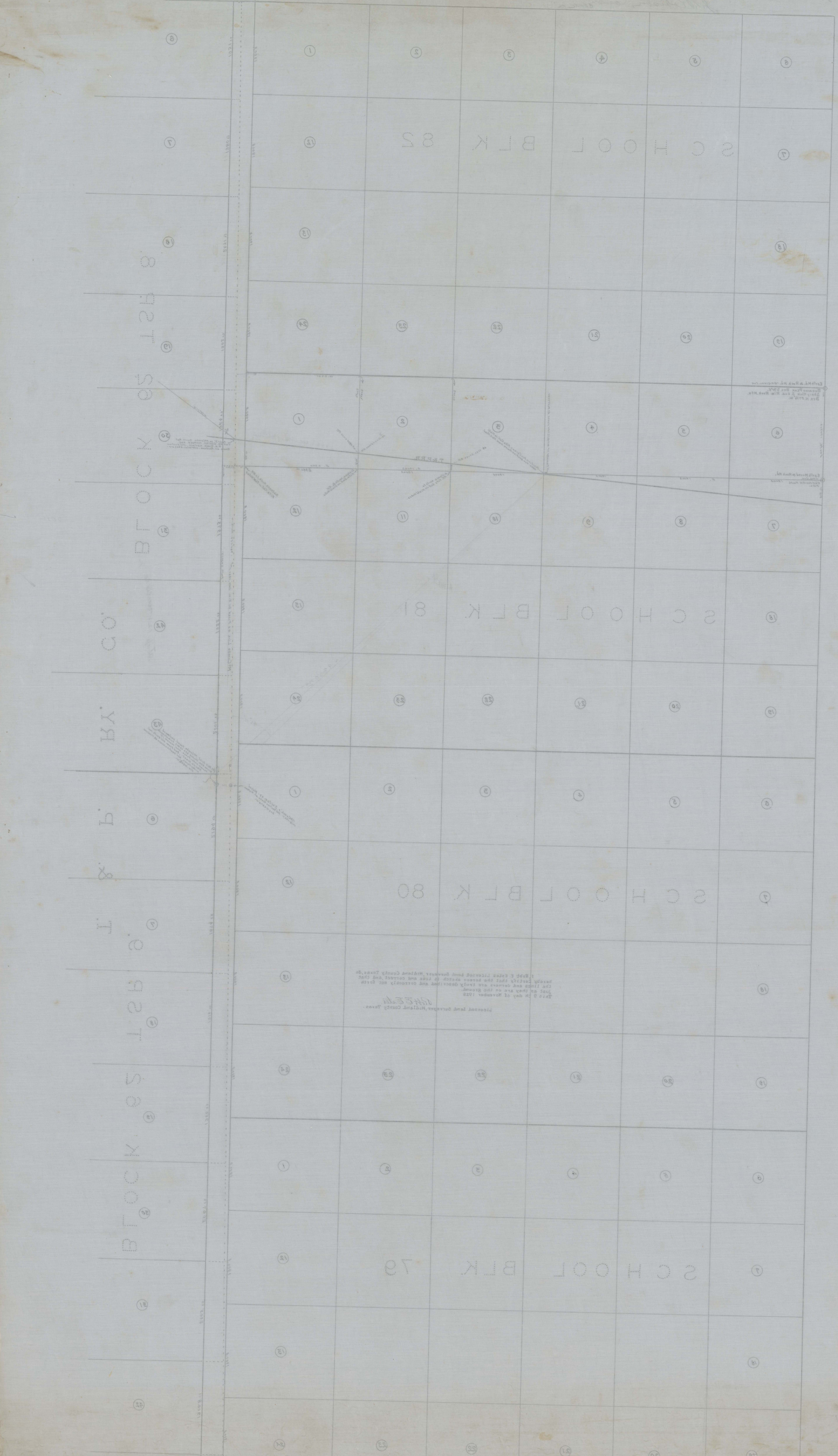
SCHOOL BLK 81

SCHOOL BLK 80

SCHOOL BLK 79

Counter # 81184
Culberson County Rolloff Sk "30"
Sk & Report in Vicinity of P.S. Blks
80, 1, 2 and T.F.R.R. Co. Blk 62 & 8
By R.E. Estes
Filed 11-15-28

CULBERSON COUNTY "30"
Estes St. Wm. P.S. Blks 80-1-2
and T.F.R.R. Co. Blk 62 & 8
Received 11-15-28



736

See large sk. accompanying this -

R. E. ESTES

LICENSED STATE AND COUNTY SURVEYOR

MIDLAND COUNTY, TEXAS

Nov 14 1928

RECEIVED

NOV 15 1928

REFERRED TO MAP

Hon. J. T. Robison,
Commsr Gen Land Office,
Austin, Texas.

Dear Sir,-

I beg to make the following report of a survey made by me to re-locate the old monument on the West line of Block 62, 360 vrs south of the N.W. cor of section 6 in Township 9, Block 62 Culberson County, and the East line of School Blocks 79, 80 and 81.

I begin this survey at the Original N.W. Cor of section 6, Public School Block 81, at an old earth mound replaced by a rock mound, from which Boracho Peak brs S70°E, sharp rock South end rim rock Mountain brs N.87.1/4°W. which are the bearings given in the original field notes.

Thence South 1907 vrs to an earth and rock mound N.W. cor of sec. 7 said Blk. 81.

Thence South at 515 vrs cross T.&P.R.R. tracks (the distance called for.

Returning to the N.W. cor of section 7-

Thence East 5703 vrs to a point 21 vrs East of Old section house location and 16 vrs North of Rail road. (according to field note call.

Thence on East at 1900,8 vrs to S.W. cor of section 2, at this point the call distance to the rail road north of 149 vrs fits exactly.

Thence on East at 1900.8 vrs S.W. cor section No.1. we find the distance north to R.R. of 316 vrs to fit the call.

Thence on East 2340 vrs to the S.E. cor of section No.1. at this point we find the distance of 521 vrs north to Rail road to check exactly with the call in the original field notes, hence I set this line up as the East line of Blocks 79, 80 81 & 82. Public School.

From this S.E. cor of section No.1. P.S.L. Blk. 81. I ran East 513 vrs, to a point,

Thence South 6489 vrs to a large gravelly earth mound under fence showing extreme age, I find a projected bearing on section house at Plateau of N.46 1/4°W, Paul Mc Combs map made in 1885 shows this bearing to be N.46.1/2° W.

From this old earth mound under fence I ran a line West and at 330 vrs I find a large rock mound and at 3 vrs S.W. I find a rock mound consisting of about 5 rocks and a small stone slab marked 8T9-62B63. both of these mounds show to be quiet new. but in the small rock mound two small stones were imbeded, though there was no encircling pit or sign of an earth mound, as this corner is on a rocky ridge, natural imbeded rocks are close to the surface, tops of some being exposed, and it would be difficult to get enough earth in the immediate vicinity to make a large earth mound. Mr Mc Combs says in his report of a survey in July 1927 that he moved this marked slab from under the fence and placed about 330 vrs West and that he built both the rock mounds that I find here, and he says "This old earth mound and encircling trench were discernible"

Very truly Yours,

R. E. Estes

Licensed Land Surveyor Midland Texas.

counter 41746

*Received in General Land Office
November 15th 1928, J. T. Robison, Comr
state*

Report accompanying Callison County
Reel Sketch No. 30-

Don. A. J. Phillips
County Clerk
Callison County, Texas.

RECEIVED TO MAP

counter 71747