

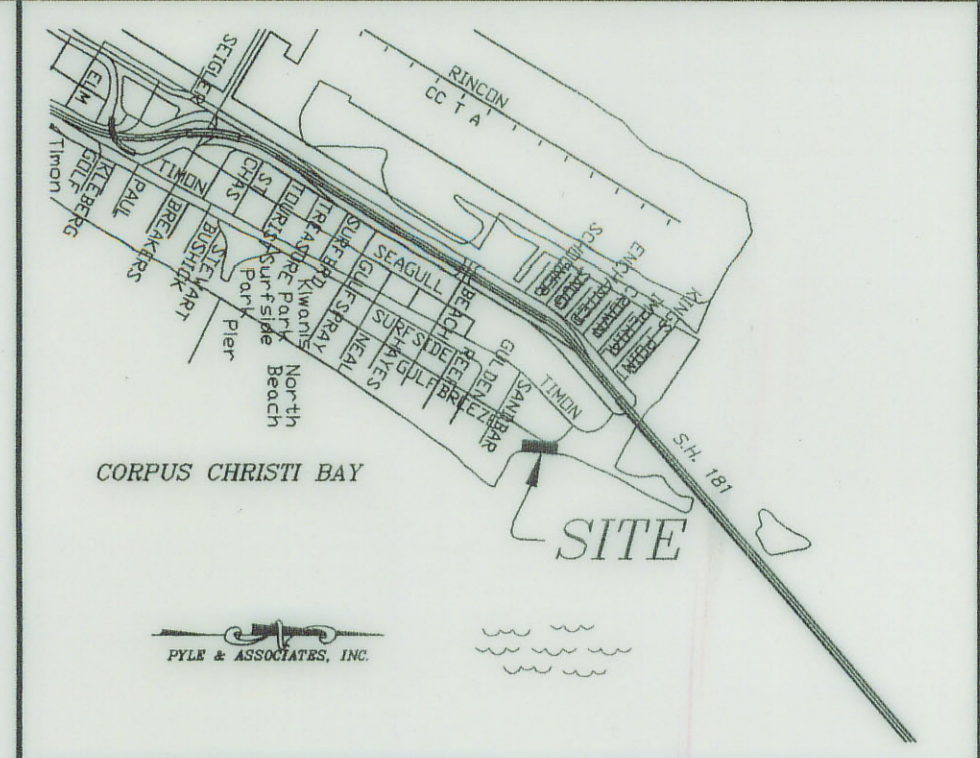
PLYE & ASSOCIATES, INC.

BLOCK 2  
NORTH BEACH PARK, UNIT 1  
VOL. 53, PG. 125, M.R.N.C.T.  
(CITY OF CORPUS CHRISTI)

BLOCK 385  
BROOKLYN ADDITION  
VOL. "A" PGS. 30-32, M.R.N.C.T.  
(CITY OF CORPUS CHRISTI)

BLOCK 387  
BROOKLYN ADDITION  
VOL. "A" PGS. 30-32, M.R.N.C.T.  
(CITY OF CORPUS CHRISTI)

TRACT 59  
CORPUS CHRISTI BAY  
SUBMERGED LAND TRACTS



LOCATION MAP  
N.T.S.

NOTES:

1. BEARINGS ARE BASED ON TEXAS STATE PLANE COORDINATE SYSTEM, SOUTH ZONE, NAD 83 AND REFERENCED TO NATIONAL GEODETIC SURVEY (NGS) MONUMENT "SK-130".
2. SHORELINE LOCATED AT MEAN HIGHER HIGH WATER AS DETERMINED FROM COOPERATIVE BASE NETWORK CONTROL STATION, LOCATED AT THE TEXAS STATE AQUARIUM ON CORPUS CHRISTI BAY. STATION DESIGNATION "N.O.A.A. 87752961". ELEVATIONS DETERMINED FROM NGS TIDE MONUMENT "90008 D", ELEVATION = 3.93 (NAVD 88).
3. ALL SHORELINE DISTANCES ARE IN VARAS WITH FEET IN PARENTHESES.
4. THIS SURVEY WAS PERFORMED IN ACCORDANCE WITH SECTION 33.136, NATURAL RESOURCES CODE, FOR THE PURPOSE OF EVIDENCING THE LOCATION OF THE SHORELINE IN THE AREA DEPICTED IN THIS SURVEY AS THAT SHORELINE EXISTED BEFORE COMMENCEMENT OF EROSION RESPONSE ACTIVITY, AS REQUIRED BY CHAPTER 53, NATURAL RESOURCES CODE. THE LINE DEPICTED ON THIS SURVEY FIXES THE SHORELINE FOR THE PURPOSE OF LOCATING A SHORELINE BOUNDARY, SUBJECT TO MOVEMENT LANDWARD AS PROVIDED BY SECTION 33.136, NATURAL RESOURCES CODE.

LITTORAL OWNER: City of Corpus Christi

TEXAS GENERAL LAND OFFICE  
Art. 33.136, Natural Resources Code  
County/NUECES, Sk. No. 3  
File Date 12-19-2002 by 42244  
See Nueces Co. Sketch File 84  
See report in box.

SURVEY OF  
A PORTION OF THE SHORELINE  
OF  
CORPUS CHRISTI BAY

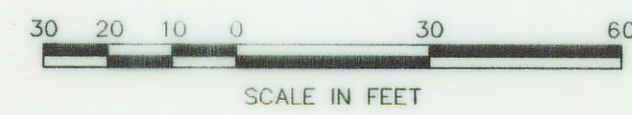
BEING A PORTION OF THE WESTERN BOUNDARY OF TRACT 59, CORPUS CHRISTI SUBMERGED LAND TRACTS ACROSS BLOCK 387, BROOKLYN ADDITION, A MAP OF WHICH IS RECORDED IN VOLUME "A", PAGES 30-32, OF THE MAP RECORDS OF NUECES COUNTY, TEXAS; LOT 13, BLOCK 387, BROOKLYN, A MAP OF WHICH IS RECORDED IN VOLUME 30, PAGE 90, SAID MAP RECORDS AND BLOCK 2, NORTH BEACH PARK, UNIT 1, A MAP OF WHICH IS RECORDED IN VOLUME 53, PAGE 125, SAID MAP RECORDS, ALL SITUATED IN NUECES COUNTY, TEXAS.

I George M. Pyle, LICENSED STATE LAND SURVEYOR, do hereby certify that the foregoing shoreline and boundary survey was made by me on the ground and that the limits, boundary and corners, natural and artificial are as described hereon.

George M. Pyle 12-17-02  
George M. Pyle, R.P.L.S. #1258 L.S.L.S.



PLYE & ASSOCIATES, INC.  
PROFESSIONAL LAND SURVEYORS  
5262 SOUTH STAPLES ST., SUITE 3504  
CORPUS CHRISTI, TEXAS 78411  
PHONE # (361) 983-1191  
FAX # (361) 985-0987



SCALE: 1" = 30'  
DATE: DECEMBER 17, 2002

RECEIVED  
DEC 18 2002  
OFFICE OF THE  
COUNTY CLERK

# Pyle & Associates, Inc.

December 17, 2002

Mr. David Dewhurst, Commissioner  
General Land Office  
1700 N. Congress Avenue, Room 812  
Austin, Texas 78701

Attn: Ben Thomson, Director of Surveying

Dear Ben:

I am herewith submitting a shoreline survey of a portion of Tract 59, Corpus Christi Bay Submerged Land Tract, Nueces County, Texas. The littoral owner is the City of Corpus Christi and the subject site is situated on the West shore of Corpus Christi Bay.

The City of Corpus Christi is planning shoreline protection/habitat restoration work for this area and requires G.L.O. approval for the shoreline.

I am enclosing seven (7) Lanmon Aerial Photo Co. Photos which are as follows: (1) BRE 3-70, flown November 9, 1938, (2) 48-0-1763, flown on December 9, 1948, (3) 1953-E1, flown on August 9, 1953, (4) 4459-1, flown on March 6, 1959, (5) 12181-6, flown on December 2, 1981, (6) 9497-6, flown on May 3, 1997, and (7) 1702-9A, flown on January 26, 2002. Each photo is at a scale of 1" = 400'. A print of each of the photos with the shoreline transposed thereon is also included.

I am also enclosing a print of a portion of Brooklyn Addition as recorded in Book "A", Page 32, of the Map Records of Nueces County and a print of the Nueces County Appraisal District Map of the area.

*NRC Art. 33.136 Sketch 3*  
**File No.** Sketch File 84  
Nueces County  
*Aerial Photos & Plans accompanying*  
*Nueces Co. NRC Art. 33.136 Sketch 3*  
**Date Filed:** December 19, 2002

Signed: *George M. Pyle*  
George M. Pyle, R.P.L.S., L.S.L.S.

**David Dewhurst, Commissioner**  
By *Douglas Howard*

FYLE & ASSOCIATES, INC.

BLOCK 9  
NORTH BEACH PARK UNIT 1  
VOL. 33 PG. 123 M.R.N.C.T.

BLOCK 385  
BROOKLYN ADDITION  
VOL. "A" PGS. 30-32, M.R.N.C.T.

BLOCK 387  
BROOKLYN ADDITION  
VOL. "A" PGS. 30-32, M.R.N.C.T.

TRACT 59  
CORPUS CHRISTI BAY  
SUBMERGED LAND TRACTS

CORPUS CHRISTI BEACH

CORPUS CHRISTI BAY

CORPUS CHRISTI BAY

NORTH BEACH - 2002

FYLE & ASSOCIATES, INC.  
PLANNING AND ENGINEERING  
1000 WEST 14TH STREET  
CORPUS CHRISTI, TEXAS 78401  
361-842-2222

SCALE IN FEET

Nueces Co. - SIX F. 94 - 1  
NRC. art. 33.136 Sketch 3

coaster 78289



PYLE & ASSOCIATES, INC.

BLOCK 2  
NORTH BEACH PARK UNIT I  
VOL. 52 PG. 121 M.R.N.C.T.

BLOCK 385  
BROOKLYN ADDITION  
VOL. "A" PGS. 30-32, M.R.N.C.T.

BLOCK 387  
BROOKLYN ADDITION  
VOL. "A" PGS. 30-32, M.R.N.C.T.

TRACT 59  
CORPUS CHRISTI BAY  
SUBMERGED LAND TRACTS

CORPUS CHRISTI BEACH

CORPUS CHRISTI BAY

NORTH BEACH - 1981



Nueces Co. Sk. F. 84-3  
NRC det. 33.134, sketch 3

Coaster 78291

PYLE & ASSOCIATES, INC.

BLOCK 3  
NORTH BEACH PARK UNIT 1  
VOL. 31 P. 25 M.R.N.C.T.

BLOCK 385  
BROOKLYN ADDITION  
VOL. "A" POS. 30-32, M.R.N.C.T.

BLOCK 387  
BROOKLYN ADDITION  
VOL. "A" POS. 30-32, M.R.N.C.T.

TRACT 50  
CORPUS CHRISTI BAY  
SUBMERGED LAND TRACTS

CORPUS CHRISTI BEACH

CORPUS CHRISTI BAY

CORPUS CHRISTI BAY

NORTH BEACH - 1959

PYLE & ASSOCIATES, INC.  
PLANNING AND SURVEYING  
1701 N. BEACH  
DALLAS, TEXAS 75201



Nueces Co. Sk. F. 84-4  
NRC ant. 33.136 Sketch 3

counter 78292

PYLE & ASSOCIATES, INC.

BLOCK 3  
NORTH BEACH PARK, UNIT 1  
VOL. 53, PG. 125, M.R.N.C.T.  
CITY OF CORPUS CHRISTI

BLOCK 385  
BROOKLYN ADDITION  
VOL. "A" PGS. 30-32, M.R.N.C.T.  
CITY OF CORPUS CHRISTI

BLOCK 387  
BROOKLYN ADDITION  
VOL. "A" PGS. 30-32, M.R.N.C.T.  
CITY OF CORPUS CHRISTI

TRACT 59  
CORPUS CHRISTI BAY  
SUBMERGED LAND TRACTS

CORPUS CHRISTI BEACH

CORPUS CHRISTI BAY

NORTH BEACH - 1953

PYLE & ASSOCIATES, INC.  
ENGINEERS AND SURVEYORS  
CORPUS CHRISTI, TEXAS



Nueces Co. sk. F. 84-5  
NRC Oct. 33. 136 Sketch 3

counter 78293



BLOCK 385  
BROOKLYN ADDITION  
VOL. 24 PGS. 30-32. M.R.N.C.T.  
CITY OF CORPUS CHRISTI

BLOCK 387  
BROOKLYN ADDITION  
"A" PGS. 30-32. M.R.N.C.T.  
CITY OF CORPUS CHRISTI

TRACT 59  
CORPUS CHRISTI BAY  
SUBMERGED LAND TRACTS

NORTH BEACH - 1948

P  
PYLE & ASSOCIATES, INC.  
PLANNING AND SURVEYING  
CORPUS CHRISTI, TEXAS  
571 5123



Nueces Co. Sk. F. 64-6  
NRC Dist. 33.134 Sketch 3

counter 78294



FILE & ASSOCIATES, INC.

BLOCK 3  
NORTH BEACH PARK, UNIT 1

BLOCK 385  
BROOKLYN ADDITION  
VOL. 24 POS. 30-32, M.R.N.C.T.  
CITY OF CORPUS CHRISTI

BLOCK 387  
BROOKLYN ADDITION  
VOL. 24 POS. 30-32, M.R.N.C.T.  
CITY OF CORPUS CHRISTI

TRACT 59  
CORPUS CHRISTI BAY  
SUBMERGED LAND TRACTS

CORPUS CHRISTI BEACH

CORPUS CHRISTI BAY

CORPUS CHRISTI BAY

NORTH BEACH - 1938

FILE & ASSOCIATES, INC.  
PLANNING AND ENGINEERING  
CORPUS CHRISTI, TEXAS



Nueces Co. Sk. F. 84-7  
N.R.C. Mt. 33.136 Sketch 3

counter 78295



Nueces Co. SK 784-8

© LANIMON AERIAL PHOTO  
Corpus Christi, Texas

28296

© ALL RIGHTS RESERVED ©

• LANMON AERIAL •  
PHOTOGRAPHY, INC.  
318 International Dr  
Corpus Christi, TX 78406  
(361) 289-1120

Date: 11-9-38

Scale: 1" = 400' ±

BRE 3-70



Nueces Co. SK.F. 84-9

© LARMON AERIAL PHOTO  
Corpus Christi, Texas

© ALL RIGHTS RESERVED ©

• LANMON AERIAL  
PHOTOGRAPHY, INC.  
318 International Dr  
Corpus Christi, TX 78408  
(361) 289-1120

Date 12-9-48

Scale 1" = 400' ±

48-0-1762

48-0-1762



Nueces Co. sk. F. 84-10

© DANMON AERIAL PHOTO  
Corpus Christi, Texas

map # 8300

© ALL RIGHTS RESERVED

LANMON AERIAL  
PHOTOGRAPHY, INC.  
318 International Dr  
Corpus Christi, TX 78408  
(361) 289-1120

Date: 8-9-53  
Scale: 1"=400'±

1953-E1

counter 2924



Nueces Co. Sk. F. 84-11

© LANMON AERIAL PHOTO  
Corpus Christi, Texas  
Coenter 78302



© ALL RIGHTS RESERVED ©

• LANMON AERIAL • )  
PHOTOGRAPHY, INC.  
312 International Dr.  
Corpus Christi, TX 78408  
(361) 289-1120

Date 3-6-59

Scale 1" = 400' ±

4459-1

4459-1



Nueces Co. Sk. F. 84-12

© LANMON AERIAL PHOTO  
Corpus Christi, Texas

© ALL RIGHTS RESERVED ©

LANMON AERIAL  
PHOTOGRAPHY, INC.  
310 International Dr  
Corpus Christi, TX 78408  
(361) 289-1120

Date: 12-2-81  
Time: 1:400 'E

121 81-6



© ALL RIGHTS RESERVED ©

LANMON AERIAL  
PHOTOGRAPHY, INC.  
20 International Dr.  
Corpus Christi, TX 78408  
(361) 289-1120

Date: 5-3-97

Scale: 1" = 400' ±

0497-6



Nueces Co. SK.F. 84-14

LANIMON AERIAL PHOTO  
Corpus Christi, Texas

• ALL RIGHTS RESERVED •

• LANMON AERIAL •  
PHOTOGRAPHY, INC.  
310 International Dr.  
Corpus Christi, TX 78408  
(361) 209-1120

Date: 1-26-02

Scale: 1" = 400' ±

1702-9A

CITY LIMITS TO CHANNEL 'A'  
U-1c

PORTO BELLO SUBDIVISION  
(THE HARBORS)  
SEE MAP U-1C

STATE HIGHWAY NO. 181

NORTH  
5768-

TIMON BLVD.  
BLVD. B  
BLVD. C  
BLVD. D  
BLVD. E  
BLVD. F  
BLVD. G  
BLVD. H  
BLVD. I  
BLVD. J  
BLVD. K  
BLVD. L  
BLVD. M  
BLVD. N  
BLVD. O  
BLVD. P  
BLVD. Q  
BLVD. R  
BLVD. S  
BLVD. T  
BLVD. U  
BLVD. V  
BLVD. W  
BLVD. X  
BLVD. Y  
BLVD. Z

SANDRAR  
SURFSIDE BLVD.  
GULF STREET  
GULF STREET

EXISTING SHORELINE  
DECEMBER 17, 2002

CORPUS CHRISTI BAY

NORTH BEACH

NUECES BAY

401 AC  
1055-1357-40

BLK. 414  
LT. 9  
REPLAT  
1055-414-90  
1055-414-95  
HULL ST.

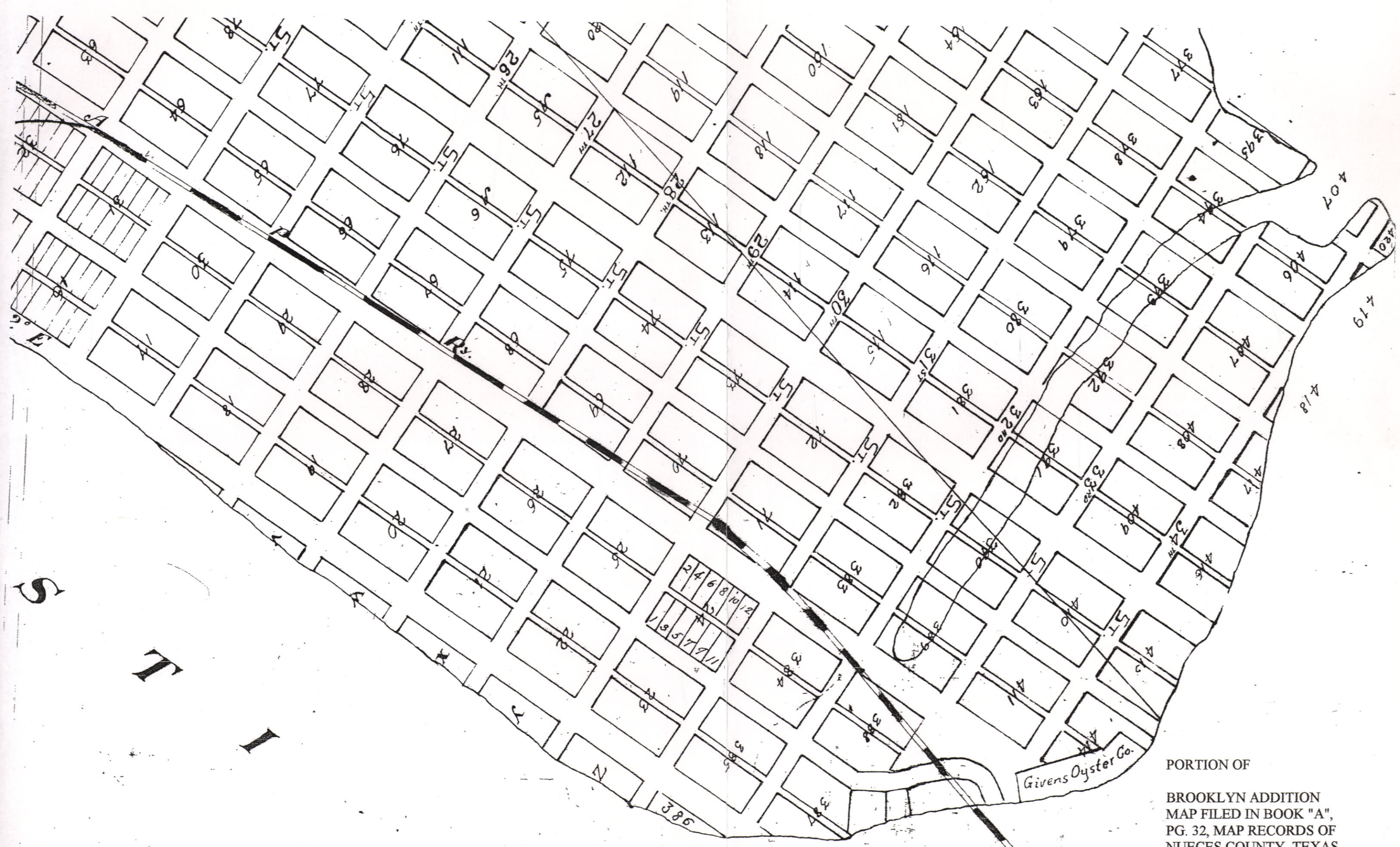
EXISTING SHORELINE  
DECEMBER 17, 2002



NUECES COUNTY APPRAISAL DISTRICT

Nueces Co. SK.F. 84-15  
NRC Art. 33-136 S.Retch 3  
counter 78310





PORTION OF  
 BROOKLYN ADDITION  
 MAP FILED IN BOOK "A",  
 PG. 32, MAP RECORDS OF  
 NUECES COUNTY, TEXAS  
 RECORDED NOV. 6, 1909

NRC Art. 33.136 Sketch 3  
 Nueces Co. SK.F. 84-16

counter 78311