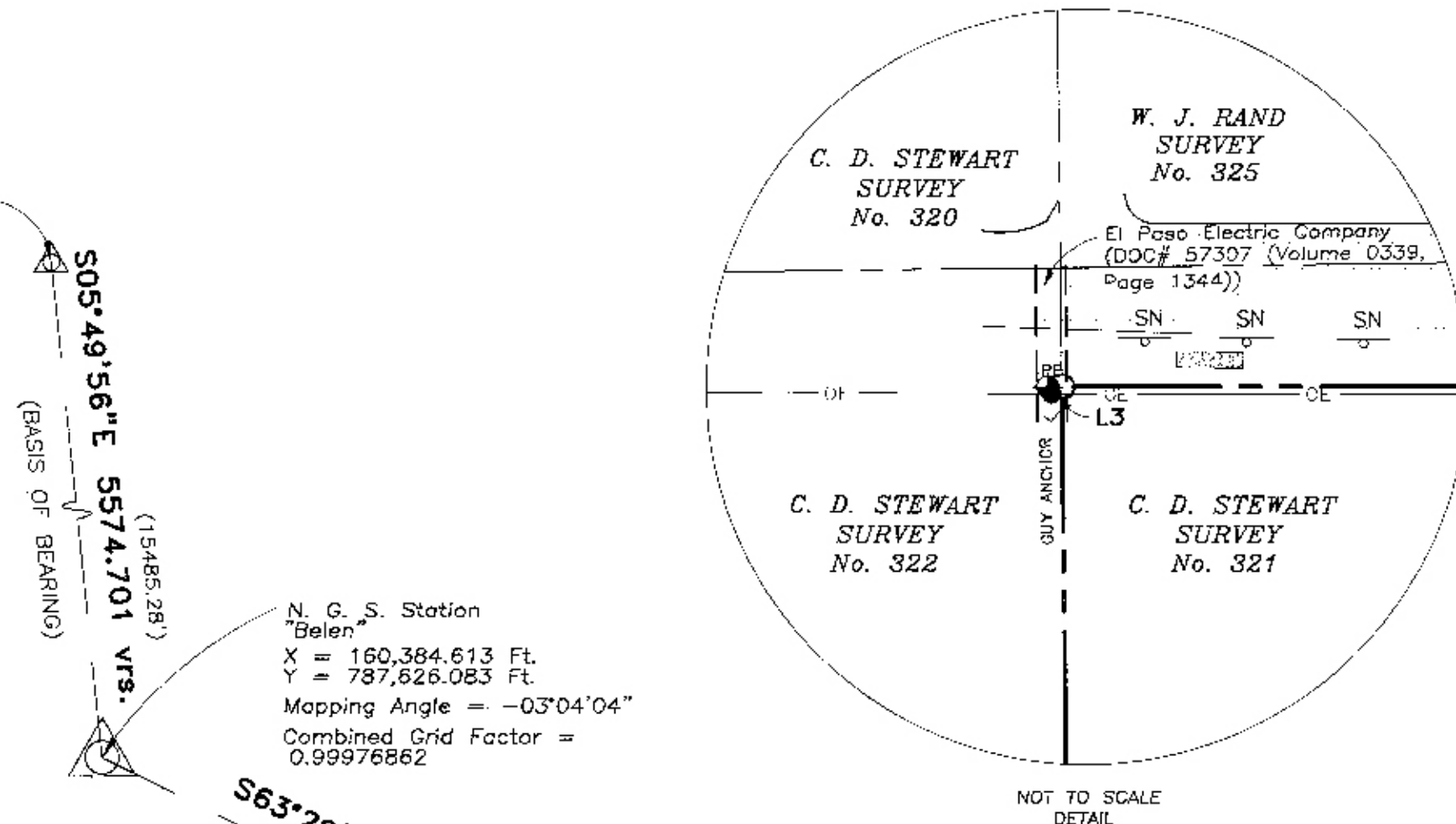


"P.O.C."
N. G. S. Station
Page = Res 1
X = 159,637.338
Y = 80,3089.757



N. G. S. Station
"Belen"
X = 160,384.613 Ft.
Y = 787,828.083 Ft.
Mapping Angle = -0°04'04"
Combined Grid Factor = 0.99976862

NOT TO SCALE
DETAIL

C. D. STEWART
SURVEY No. 320

W. J. RAND SURVEY No. 325

SURVEY No. 31
BLOCK 78, TOWNSHIP 3,
TEXAS AND PACIFIC RAILWAY
COMPANY SURVEYS

LEGEND

- = SET 5/8" REBAR WITH CAP STAMPED
"LAND-MARK TX4869 NM11402" UNLESS
OTHERWISE NOTED.
- = GUY ANCHOR = Power Pole w/Guy Anchor
- ⊕ = Fire Hydrant
- ⊙ = Sanitary Sewer Manhole
- ⊗ = Sign
- ⊛ = Telephone Manhole
- ⊕ = TXDOT Brass Cap
- ⊙ = Asphalt
- ⊗ = Light Pole
- ⊛ = Concrete
- = Gas Line
- = Overhead Electric Line

AREA

624.9942 Acres	27,224,749 Square Feet.
----------------	-------------------------

LINE	DIRECTION	DISTANCE	vrs.
L1	S33°07'44"E	1092.64'	393.350
L2	S00°42'20"E	1065.02'	383.407
L3	S89°58'02"W	9.59'	3.452

Notes:

- 1.) Combined Grid Factor = 0.99976862;
- 2.) Distances are horizontal surface measurements;
- 3.) Coordinates are based on the Central Zone of Texas Coordinate System (NAD-27);
- 4.) A field note description with the same date accompanies this plat.

CERTIFICATION

I, Larry L. Drewes, Licensed State Land Surveyor of El Paso County, Texas, do hereby certify that the foregoing Survey was made by me on the ground, according to law, and that the limits, boundaries and corners, with marks, natural and artificial, are truly correct as described in the foregoing plat and field notes.

Larry L. Drewes 03-01-07
Larry L. Drewes, L. S. L. S.

Date: November 16, 2006
Job No. 06-03-23323

REVISIONS	
02-14-07	Title Block, Notes, Record Type, and Etc...

DRWG. BY: T.P. CHECKED BY: L.D.

PLAT SURVEY
OF
A PORTION OF
C.D. STEWART SURVEY No. 321,
EL PASO COUNTY, TEXAS

Land-Mark Professional Surveying, Inc.
1420 Bessemer Drive, Suite "A"
El Paso, Texas 79938
(915) 598-1300
Fax (915) 598-1221
email: Larry@Land-marksurvey.com
"Serving Texas, New Mexico and Arizona"

C. D. STEWART SURVEY No. 322

HORIZON HILLS
REPLAT "B"
AMENDING SUBDIVISION
HORIZON HILLS
REPLAT "C"

LEIGH CLARK
SURVEY No. 292
STATE OF TEXAS

LEIGH CLARK SURVEY No. 291

SURVEY No. 43
BLOCK 78, TOWNSHIP 3,
TEXAS AND PACIFIC RAILWAY
COMPANY SURVEYS

