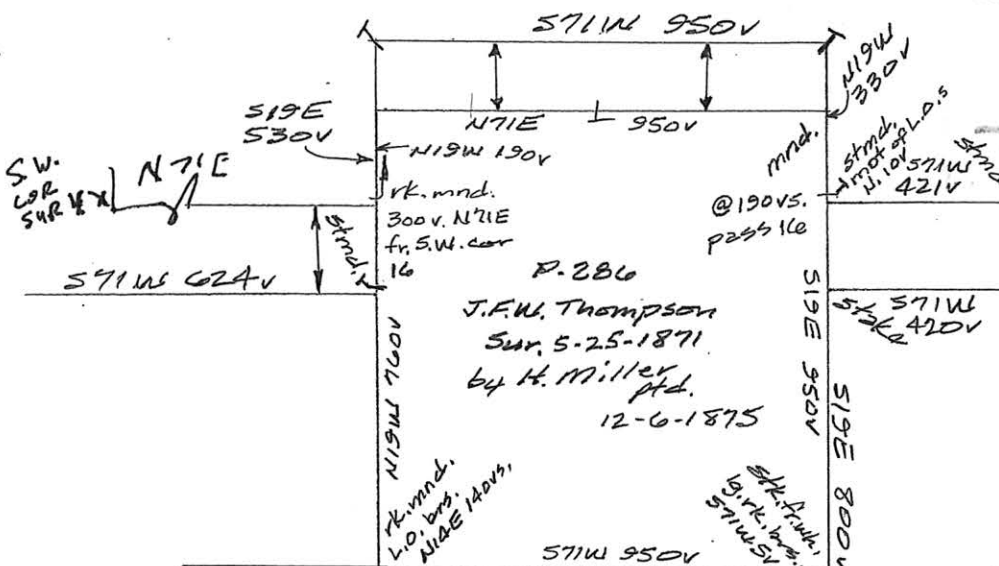


13309
 O.H.P. Townsend
 Sur. 1-20-1892
 by E. Brown
 ptd.
 2-25-1892

5-3149
 G.C. & S.F. Ry. Co.
 Corr. Sur.
 by E. Brown

ptd.
 9-12-1890

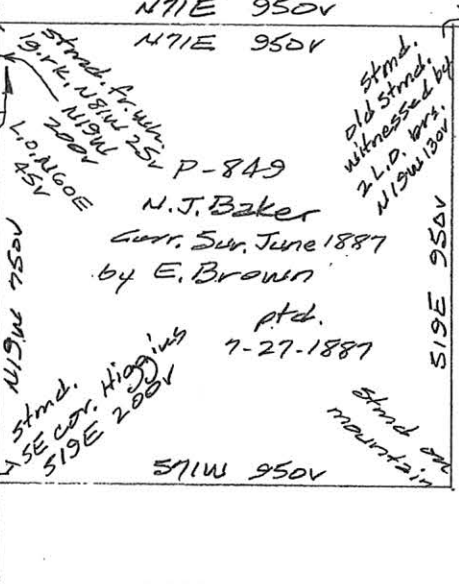
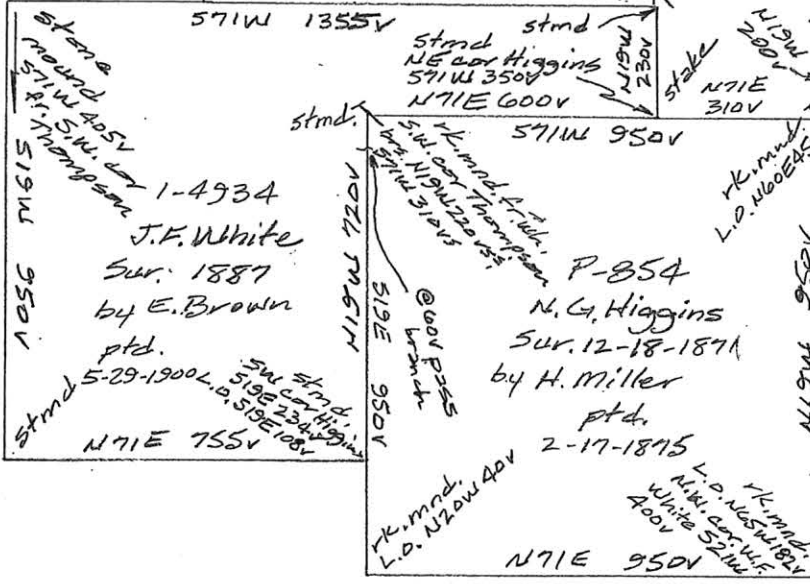
5116
5615
Stake



5-3217
 G.C. & S.F. Ry. Co.
 Corr. Sur. Nov. 1889
 by E. Brown
 ptd.
 3-15-1890

1620
 858

 2478



OFFICE SKETCH
 LAMPASAS COUNTY
 N 10° E 19 miles

1" = 400' ±

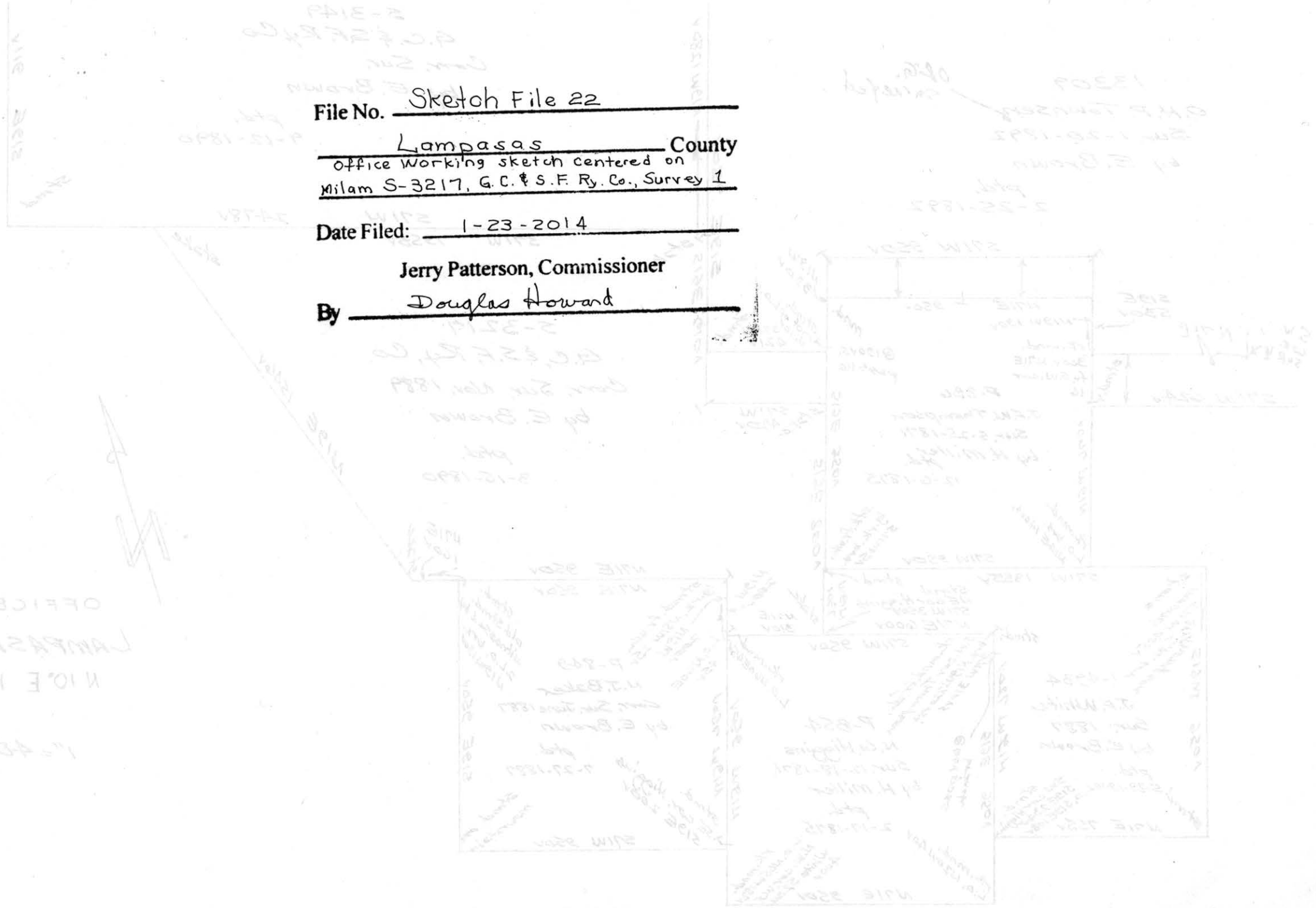
File No. Sketch File 22

Lampasas County
office working sketch centered on
Milam S-3217, G.C. & S.F. Ry. Co., Survey 1

Date Filed: 1-23-2014

Jerry Patterson, Commissioner

By Douglas Howard



OFFICE SKETCH
LAMPASAS COUNTY
N 10. E 13 miles
1" = 400'

1880
828
8718

J.H. Holmes a/s/12/2003