

482



# SMITH'S ATLAS

DESIGNED TO ACCOMPANY  
THE

# GEOGRAPHY.

BY  
R.C. SMITH, A.M.



NEW-YORK

PUBLISHED

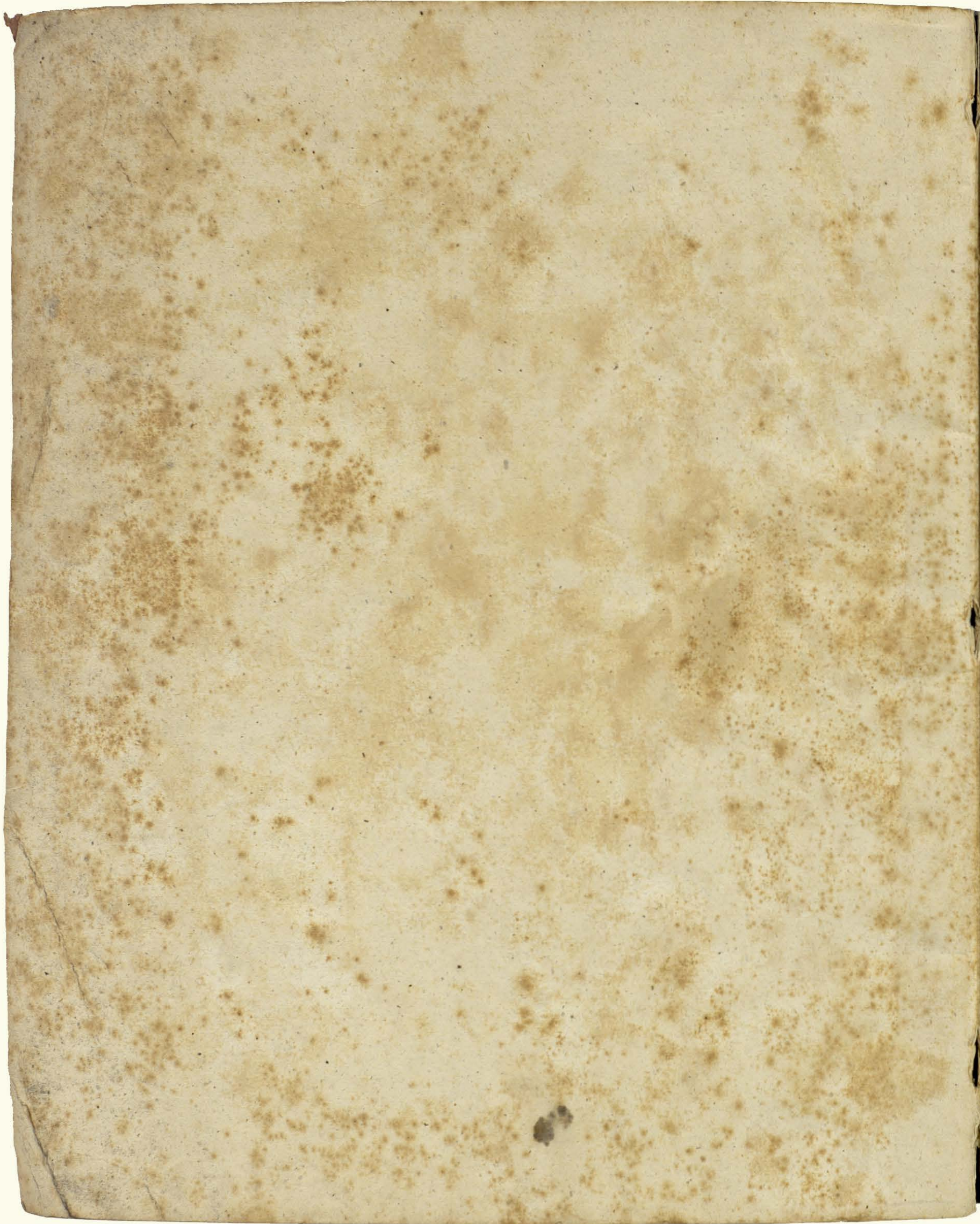


CADY & BURGESS.

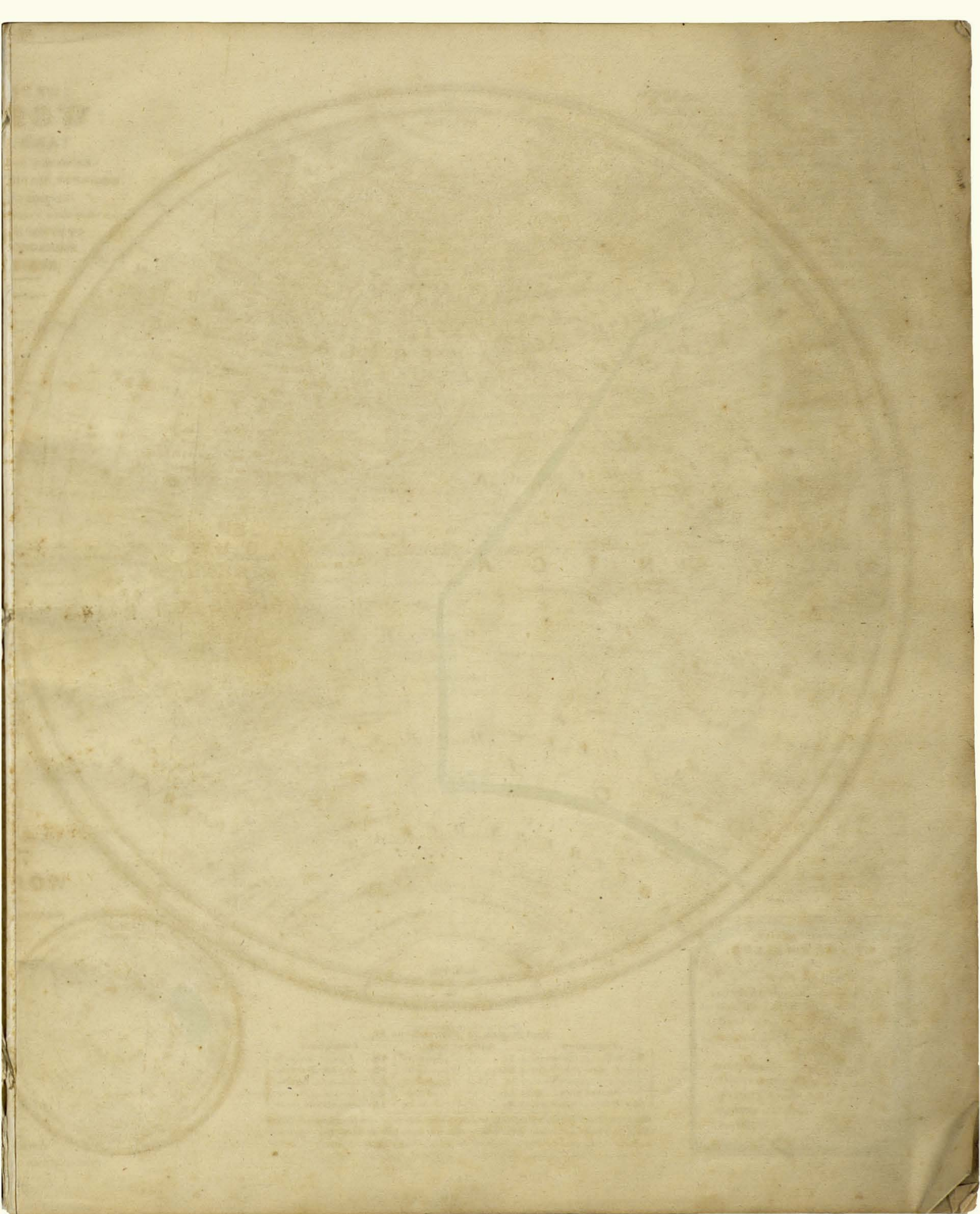
PORTLAND: SANBORN & CARTER.

Entered according to Act of Congress, in the year 1839, by DANIEL BURGESS, in the Clerk's office of the District Court of Connecticut.











**NORTH AMERICA** has a surface of 8½ millions of square miles 28 millions of inhabitants, three on a square mile and is about four and a half times as large as the United States.

**SOUTH AMERICA** has a surface of about 6½ millions of square miles, 14½ millions of inhabitants, 2 on a square mile and is about three and a half times as large as the United States.

**OCEANICA** has a surface of about 2 millions of square miles, 20 millions of inhabitants, 5 to a square mile and is twice as large as the United States.

**EXPLANATION OF THE EMBLEMS.**

State of Society.

- Barbarous.
- Half Civilized.
- Civilized.
- Enlightened.

Religion.

- Protestant.
- Roman Catholic.
- Greek Church.
- Mahometanism.
- Paganism.
- Missionary Stations.

**Explanation of Abbreviations &c.**

Population.		Races of Men.		Government.	
m.	Million of Inhabitants	En.	European	LM.	Limited Monarchy
L &c.	See many Inhabitants to a square mile	As.	Asiatic	AM.	Absolute Monarchy
	Square Miles.	In.	Indian	R.	Republic
	□ Million of square miles	Ar.	African	V.	Viceroy
		My.	Malay	I.C.	Independent Chiefs

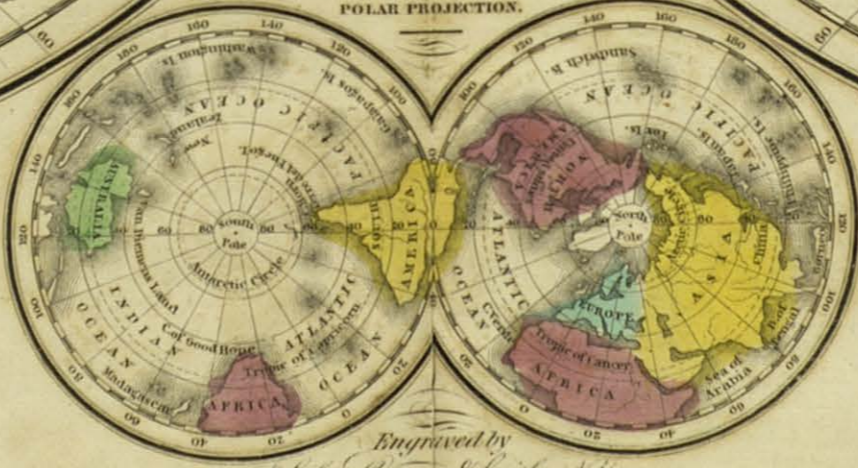
Note.—The Earth's surface has an extent of more than 200 millions of sq. miles with a population estimated at 800 millions: one third of whom are considered as belonging to the European race; one third to the Asiatic and the remaining third as composing the Malay, African & American Races.

# MAP OF THE WORLD: AND CHART

Exhibiting the SIZE of each COUNTRY, NATION OR KINGDOM its POPULATION as a whole and to a square mile also the different STATES OF SOCIETY FORMS OF GOVERNMENT RELIGION &c.

Capitals thus \*

THE WORLD ON A POLAR PROJECTION.



Engraved by S. Augustus Mitchell, N.Y.

Reproduced with the permission of the Government in the year 1850 by the Surveyor-General in the Office of the District Court of Connecticut

**EUROPE** has a surface of about 3½ millions of square miles, 230 millions of inhabitants / all of whom except the Laplanders are properly reckoned as belonging to the European race / 70 persons on a square mile and is a little more than 1½ times as large as the United States.

**ASIA** has a surface of 16 millions of square miles 570 millions of inhabitants, 31 on a square mile, and is 8 times as large as the United States.

**AFRICA** has a surface of 11 millions of square miles 90 millions of inhabitants, 8 on a square mile and is 3½ times as large as the United States.



**Explanation of Fractions Relating to Population and Square Miles.**

1/4	about 250 000	3/4	about 400 000	1/2	about 10 000	3/10	about 33 000
1/2	500 000	5/8	175 000	1/3	81 000	1/32	32 000
3/4	750 000	7/8	143 000	1/4	71 000	1/30	30 000
1/3	333 000	1/2	125 000	1/5	59 000	1/20	26 000
2/3	666 000	3/4	110 000	1/6	50 000	1/10	20 000
1/5	200 000	5/8	100 000	1/8	40 000	1/15	14 000

Note.—The population and extent of the different Countries are expressed by characters generally denoting round numbers, but sufficiently exact for most practical purposes; with the decided advantage of being more easily remembered by the learner.

Islands belonging to Great Britain (Bz.) Prussia (Pr.) Spain (Sp.) Denmark (Dn.) Sweden (Sw.) Russia (Ru.)



Longitude West from Greenwich



Printed according to Act of Congress in the year 1839. By David Briggs, in the Clerk's Office of the District Court of Connecticut.

Eng. by Siles, Sherman & Smith, N.Y.





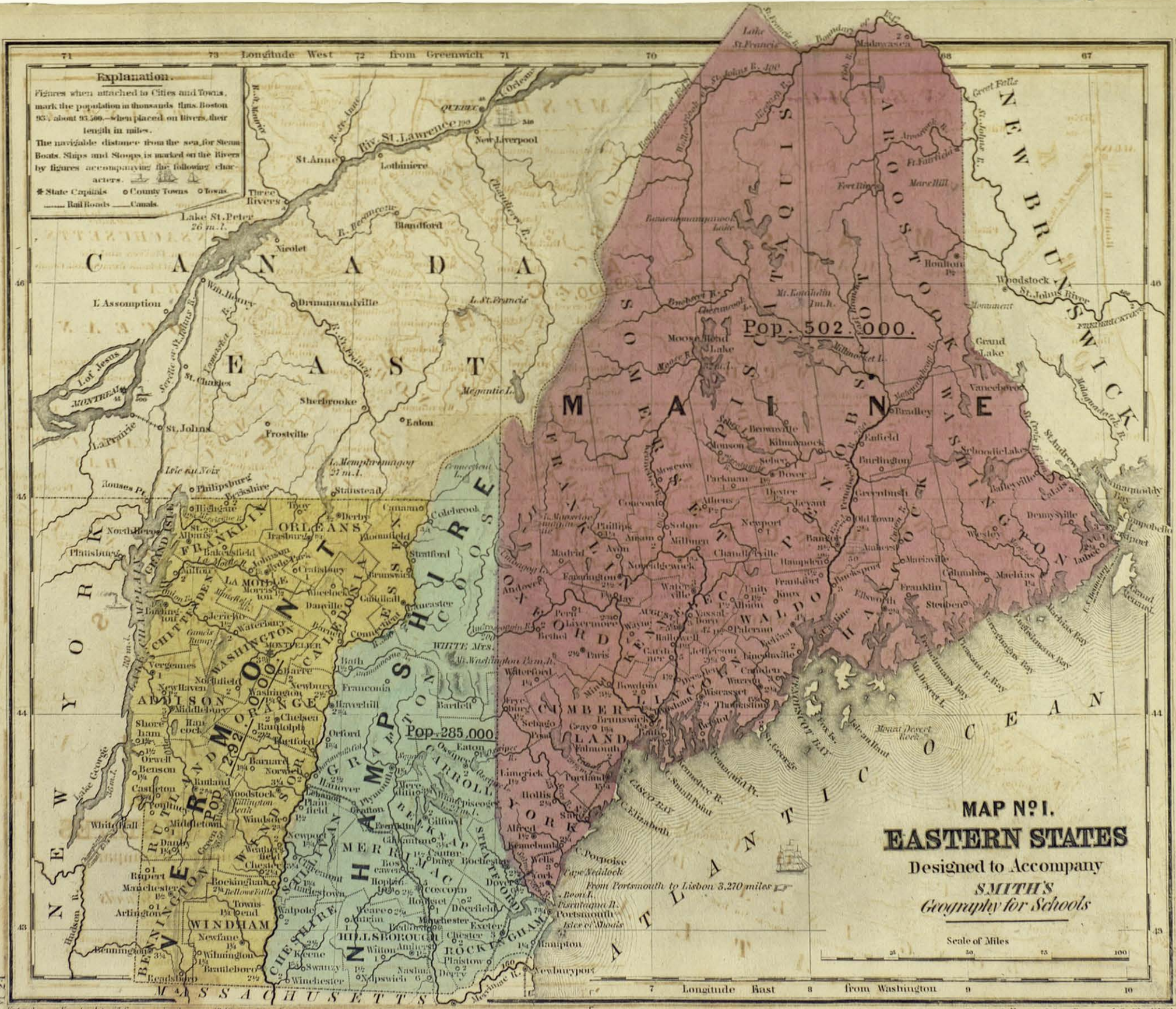
**MAP OF THE UNITED STATES AND CANADA.**  
 Designed to Accompany  
**SMITH'S**  
*Geography for Schools.*

**Explanation**  
 Figures when attached to Cities and Towns mark the population in thousands thus Albany 33\* for 33,750 when placed on Rivers their length in miles. The navigable distance from the sea for Steamboats Ships and Sloops is marked on the rivers by figures accompanying the characters. Seats of Government thus State Capitals. Rail Roads. - Canals.

**MAP OF MEXICO AND GUATEMALA.**

Scale of Miles.  
 0 100 200 300 400 500  
 For explanation, see Map of the World and U.S.





**Explanation.**

Figures when attached to Cities and Towns, mark the population in thousands thus Boston 93, about 93,500.—when placed on Rivers, their length in miles.

The navigable distance from the sea, for Steam Boats, Ships and Sloops, is marked on the Rivers by figures accompanying the following characters.

\* State Capitals    o County Towns    o Towns

— Rail Roads    — Canals

CANADA

EAST

VERMONT

NEW HAMPSHIRE

NEW ENGLAND

MASSACHUSETTS

NEW YORK

Pop. 502,000.

Pop. 285,000.

**MAP N<sup>o</sup> 1.**  
**EASTERN STATES**  
 Designed to Accompany  
*SMITH'S*  
*Geography for Schools*

Scale of Miles  
 0 25 50 75 100

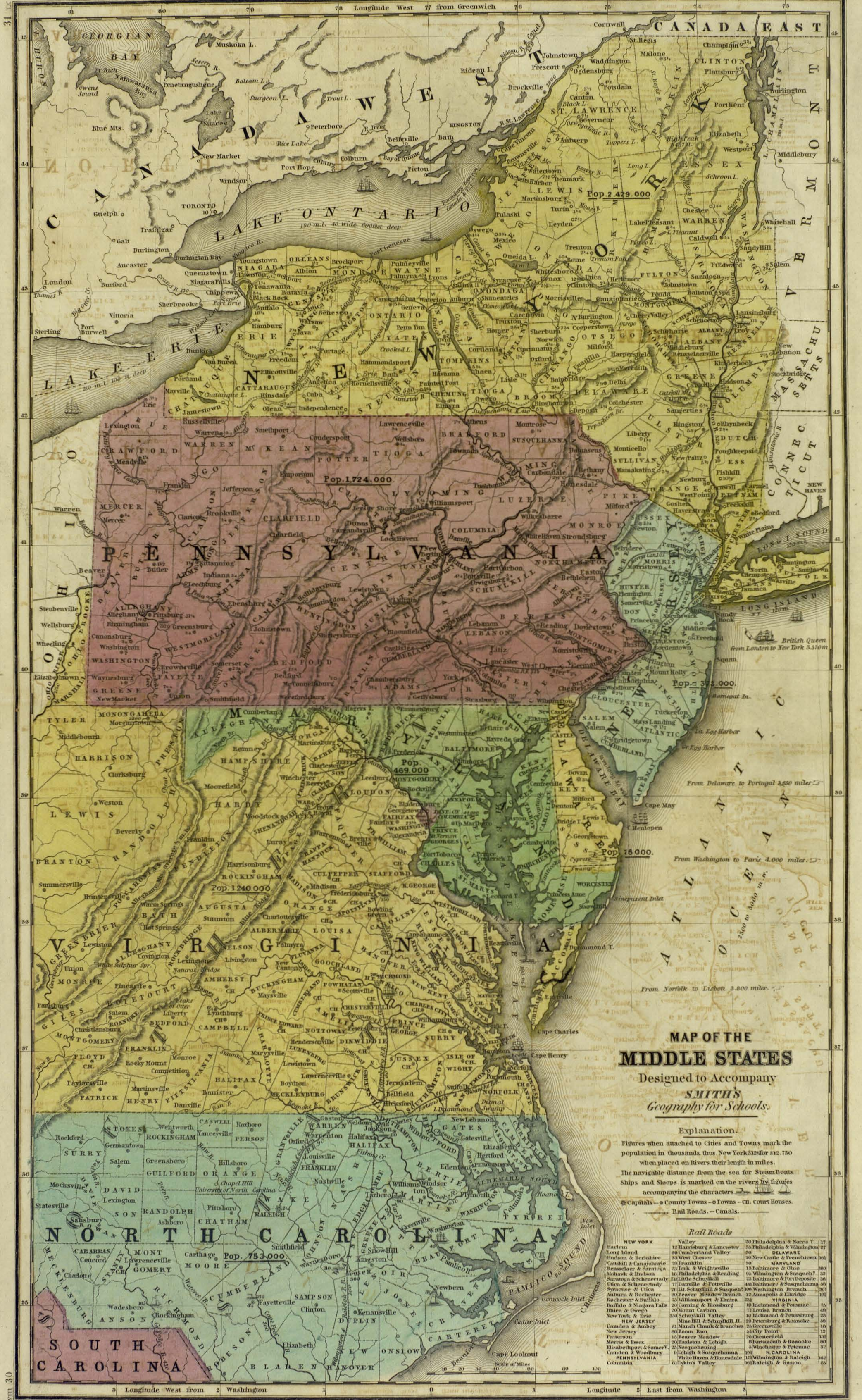
Entered according to Act of Congress in the year 1843 by John Paine, in the Clerk's Office of the southern district of New York.

Drawn & Engraved by Sherman & Smith, N York









# MAP OF THE MIDDLE STATES

Designed to Accompany  
**SMITH'S**  
*Geography for Schools.*

### Explanation.

Figures when attached to Cities and Towns mark the population in thousands, thus New York 3,125 for 3,125,000 when placed on Rivers their length in miles.  
The navigable distance from the sea for Steamboats Ships and Sloops is marked on the rivers by figures accompanying the characters  $\text{---}$   $\text{---}$   $\text{---}$   
Capitals — County Towns — Towns — Ch. Court Houses.  
Rail Roads. — Canals.

### Rail Roads

NEW YORK	Valley	20 Philadelphia & Norris T.	17
Harlem	12 Haverburg & Lancaster	35 Philadelphia & Wilmington	27
Low Island	80 Cumberland Valley	35 Delaware	27
Budson & Berkshire	80 West Chester	10 New Castle & Frenchtown	30
Cattkill & Canajoharie	78 Franklin	30 Maryland	30
Bensselaer & Saratoga	75 Tonk & Westerlo	13 Baltimore & Ohio	200
Albany & Hudson	40 Philadelphia & Reading	10 Washington & Susquehanna	30
Saratoga & Schoenectady	72 Little Schuylkill	23 Baltimore & Port Deposit	32
Ticonderoga & Troy	71 Danville & Potsville	44 Baltimore & Susquehanna	50
Albany & Rochester	70 Little Schuylkill & Susquehanna	100 Washington Branch	30
Albany & Schenectady	60 Leaver Meadows Branch	12 Annapolis & Ellicott	10
Albany & Westerlo	55 Williamsport & Elmira	75 Virginia	75
Albany & Niagara Falls	50 Corning & Rosburgh	10 Richmond & Potomac	25
Albany & Oswego	50 Mont Carmel	11 Loudon Beach	40
New York & Erie	50 Schuylkill Valley	10 Richmond & Petersburg	25
Albany & Schuylkill H.	50 Mine Hill & Schuylkill H.	25 Petersburg & Roanoke	30
Camden & Anby	41 Manch Chunk & Branches	25 Greenockville	30
New Jersey	60 Room Run	54 City Point	12
Trenton	15 Hunter Mountain	20 Chesterfield	13
Morris & Essex	60 Hazleton & Lehigh	10 Pennsylvania & Roanoke	30
Elizabethport & Somers	25 Nequehoning	5 Winchester & Potomac	32
Camden & Woodbury	61 High & Susquehanna	10 Carolina	10
PENNSYLVANIA	White Haven & Honesdale	15 Wilmington & Raleigh	32
Columbia	12 Yorks Valley	10 Raleigh & Gaston	35





**MAP OF THE SOUTHERN STATES**

Designed to Accompany  
**SMITH'S**  
*Geography for Schools.*

**Explanation.**

Figures when attached to Cities and Towns mark the population in thousands thus Charleston 20, 20 250 - when placed on Rivers, their length in miles. The navigable distance from the sea for Steam Boats Ships and Sloops is marked on the rivers by figures accompanying the characters.   
 • Capitals. • County Towns. • Towns. • CH. Court Houses.   
 ..... Rail Roads. - Canals

From New Orleans to New York by water 2000 miles

1100 miles long 150 miles wide

Scale of Miles

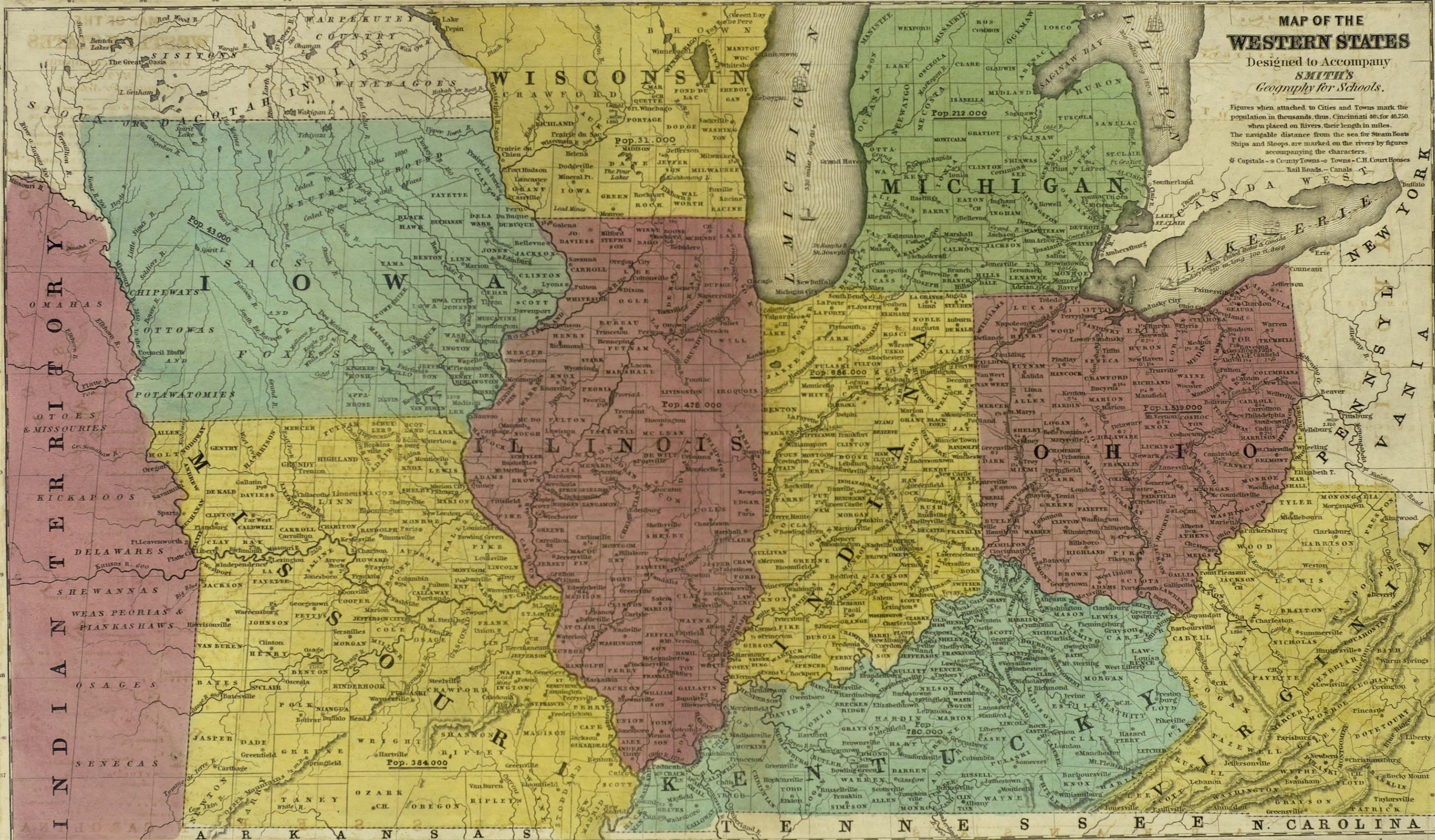


89 Longitude West 20 from Greenwich, 87 86 85 84 83 82 81 80 79

# MAP OF THE WESTERN STATES

Designed to Accompany  
*SMITH'S*  
*Geography for Schools.*

Figures when attached to Cities and Towns mark the population in thousands, thus, Cincinnati 46, for 46,250. when placed on Rivers, their length in miles. The navigable distance from the sea for Steam Boats Ships and Sloops, are marked on the rivers by figures accompanying the characters.  
\* Capitals - \* County Towns - \* Towns - C.H. Court Houses  
— Rail Roads - Canals



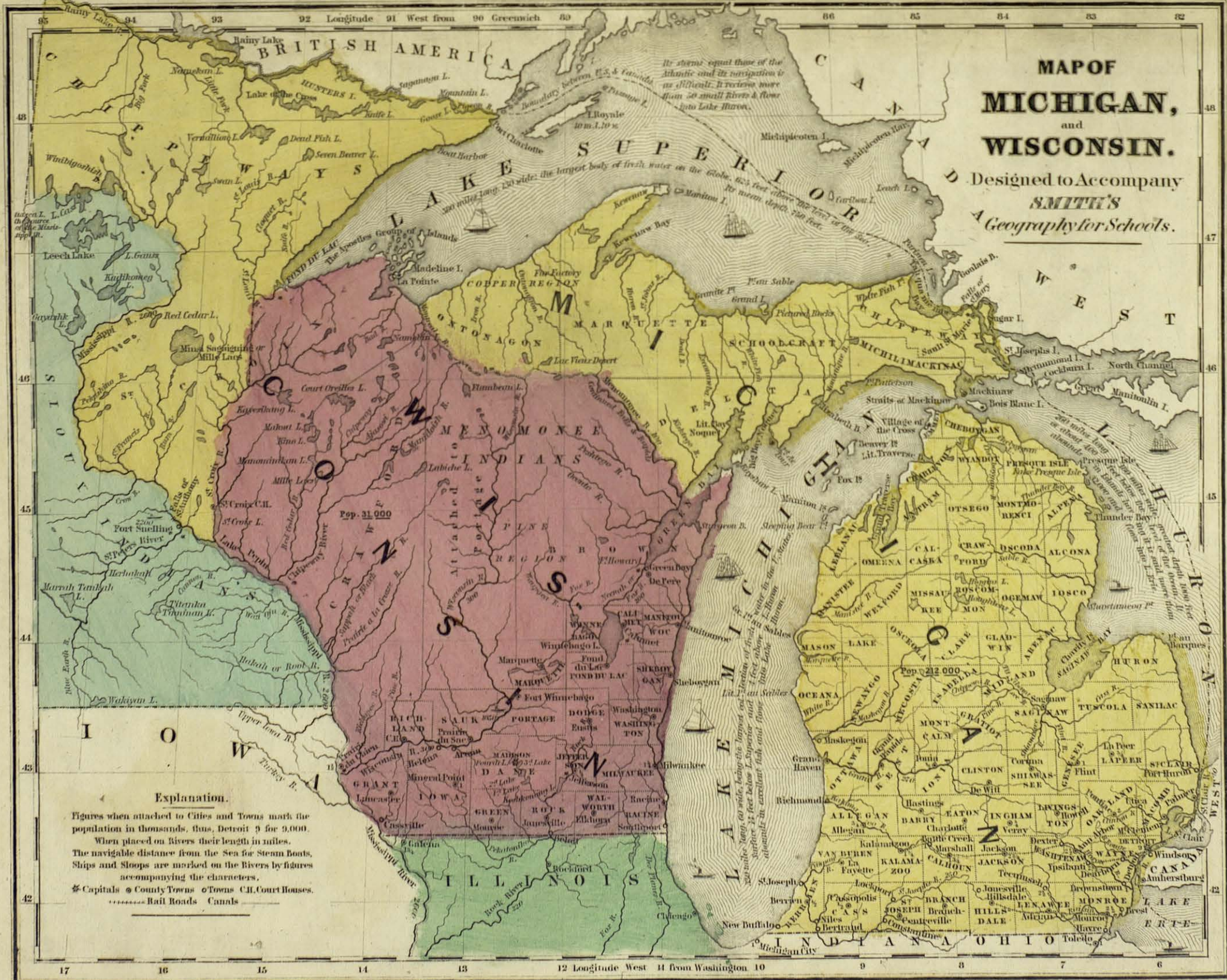
19 18 17 16 15 14 13 Longitude West 11 from Washington 10 9 8 7 6 5 4 3

Entered according to Act of Congress, in the year 1830, by David Burgess, in the Clerk's Office of the District Court of Connecticut.



# MAP OF MICHIGAN, and WISCONSIN.

Designed to Accompany SMITH'S Geography for Schools.



### Explanation.

Figures when attached to Cities and Towns mark the population in thousands, thus, Detroit 9 for 9,000.  
 When placed on Rivers their length in miles.  
 The navigable distance from the Sea for Steam Boats.  
 Ships and Sloops are marked on the Rivers by figures accompanying the characters.  
 \* Capitals    • County Towns    ○ Towns    □ Court Houses.  
 ———— Rail Roads    ———— Canals

Its storms equal those of the Atlantic and its navigation is as difficult. It receives more than 50 small rivers & flows into Lake Huron.

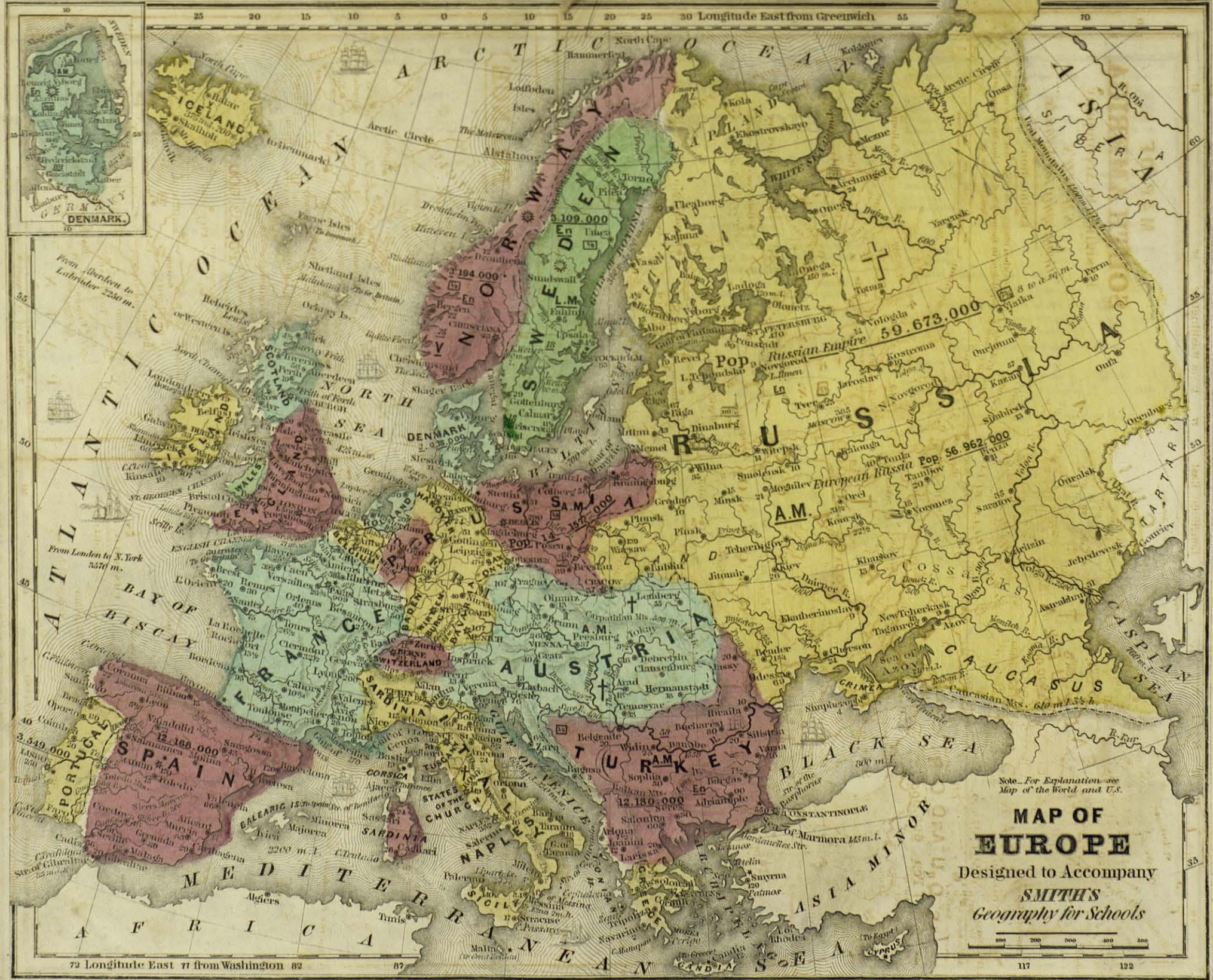
300 miles long, 120 wide; the largest body of fresh water on the globe, 625 feet above the level of the sea.

62 1/2 feet above the level of the sea.









Note: For Explanation see  
 Map of the World and U.S.  
**MAP OF EUROPE**  
 Designed to Accompany  
**SMITH'S**  
*Geography for Schools*

Entered according to Act of Congress in the year 1843 by John Paine in the Clerk's Office of the Southern District of New York.

Drawn & Engraved by Sherman & Smith N.York.



# MAP OF THE WEST INDIES.

Designed to Accompany  
**SMITH'S**  
*Geography for Schools*

### Explanation.

Figures when attached to Cities and Towns mark the population in thousands thus; Havana 130, 130,000.  
\* Missionary Stations  
Islands belonging to the British thus; Br/ French Fr/ Spaniards Sp/ Dutch D/ Swedes Sw/ Danes Den/

BRITISH ISLANDS 14,400 Sq. M. Pop. 728,300		En. & An.	
Sq. M.	Pop.	Sq. M.	Pop.
Anegada	13 250	Jamaica	6,250 380,000
Anguilla	29 3,000	St. Lucia	275 16,017
Antigua	106 35,000	Montserrat	47 7,600
Bahamas	4,440 19,943	Nevis	34 11,500
Barbadoes	166 102,521	Roatan	28
Barbuda	72 400	Tobago	90 13,700
Cayman & Crab I.	184	Tortola	24 7,731
St. Christopher	70 23,492	Trinidad	1,065 39,328
Dominica	298 10,630	St. Vincent	132 26,533
Grenada	140 22,542	Virgin Gorda	11
Grenadines	30		

FRENCH 926 Sq. M. Pop. 117,500		En. & An.	
Sq. M.	Pop.	Sq. M.	Pop.
Desirade	16	St. Martin N.	20
Gundeloupe	534	Martinique	291 117,500
Marie Galante	60	Saintes	5

SPANISH 47,080 Sq. M. Pop. 1,480,000		En. & An.	
Sq. M.	Pop.	Sq. M.	Pop.
Cuba	43,380 1,100,000	Porto Rico	3,700 380,000

DUTCH 819 Sq. M. Pop. 30,200		En.	
Sq. M.	Pop.	Sq. M.	Pop.
Curacao	600 13,000	St. Martin S.	10 3,500
St. Eustatius	169 13,700	Saba	20

SWEDISH 28 Sq. M. Pop. 8,500		En.	
Sq. M.	Pop.	Sq. M.	Pop.
St. Bartholomew	25 8,500		

DANISH 188 Sq. M. Pop. 41,500		En.	
Sq. M.	Pop.	Sq. M.	Pop.
Santa Cruz	81 32,000	St. Thomas	37 7,000
St. John	70 2,500		

For explanation of signs see Map of the World.



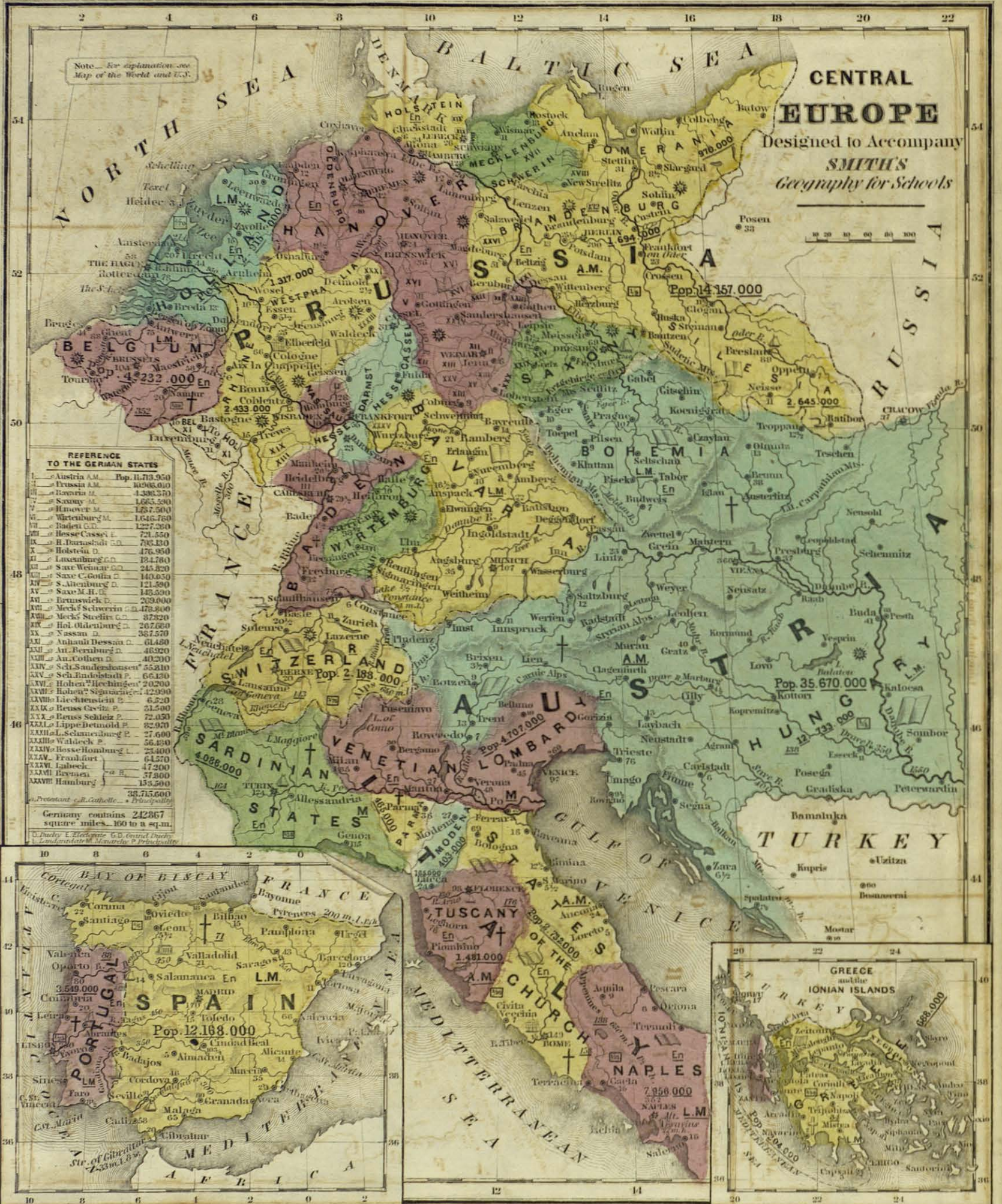
Entered according to Act of Congress in the year 1841, by John Paine, in the Clerk's office of the Southern District of New York.

Drawn & Engraved by Sherman & Smith









Entered according to Act of Congress, in the year 1843 by John Paine, in the Clerk's Office of the Southern District of New York. Drawn & Engraved by Sherman & Smith N.Y.



Longitude from Greenwich



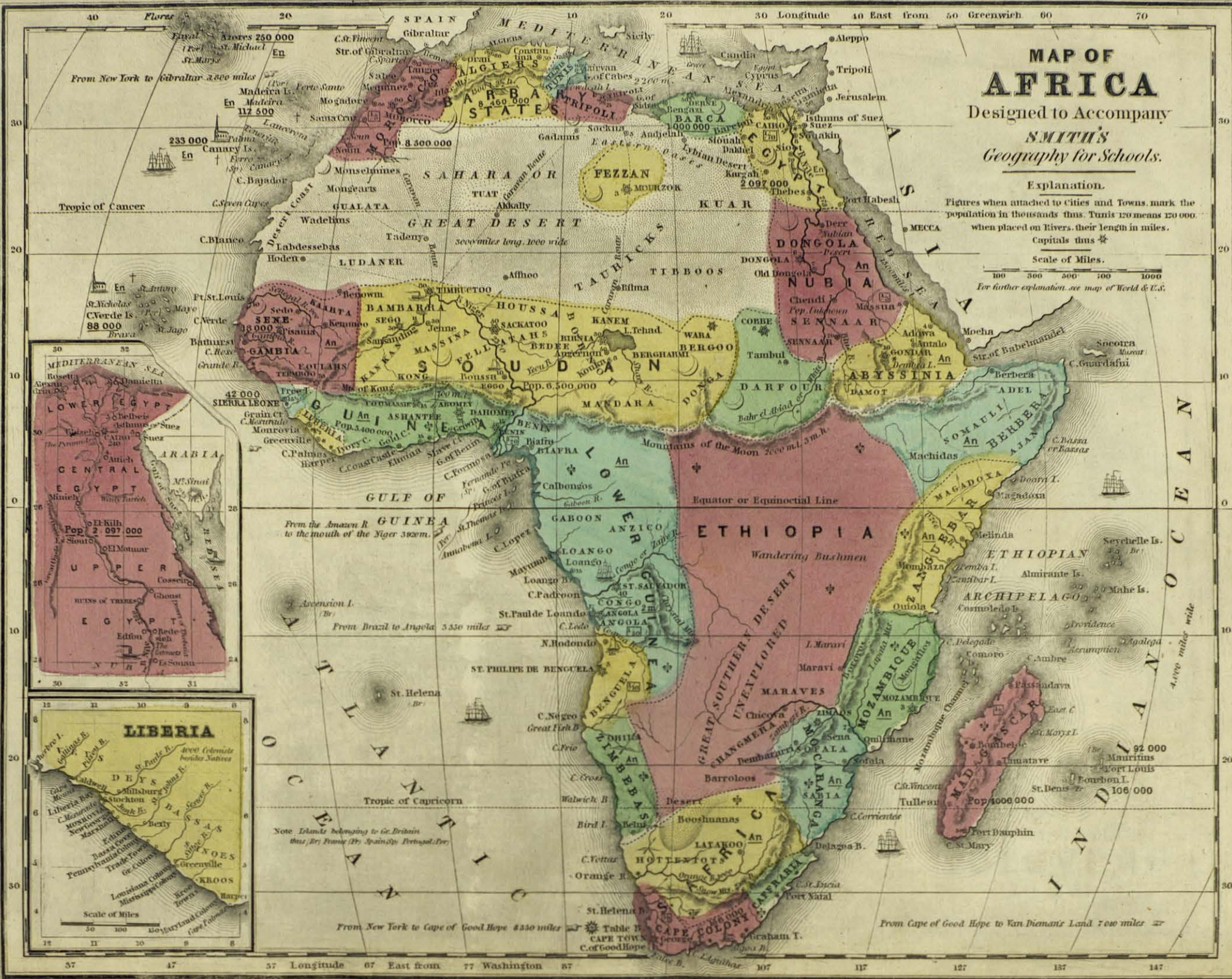
**MAP OF ASIA**

Designed to Accompany  
**SMITH'S**  
*Geography for Schools*  
 For explanation, see Map of the World and U. S.

Entered according to Act of Congress in the year 1843 by John Paine in the Clerk's Office of the Southern District of New York.

Drawn & Engraved by Sherman & Smith, N. York.



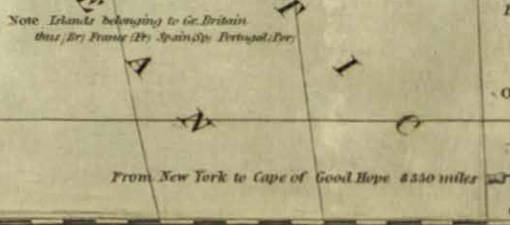


# MAP OF AFRICA

Designed to Accompany  
*SMITH'S*  
Geography for Schools.

**Explanation.**  
 Figures when attached to Cities and Towns, mark the population in thousands thus. Tunis 120 means 120 000. when placed on Rivers, their length in miles. Capitals thus  $\star$

**Scale of Miles.**  
 100 300 500 700 1000  
 For further explanation see map of World & U.S.





# MAP OF OCEANICA

Designed to Accompany  
*SMITH'S*  
*Geography for Schools*

## Explanation.

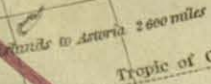
Capitals marked thus. Other Towns.

For further explanation, see map of World & E.

Scale of Miles.

200 500 1000 1500

The Pacific Ocean was discovered by Balboa in 1513 - first navigated by Magellan in 1520 - extends from North to South 1300 miles, and from East to West 10 800 miles.

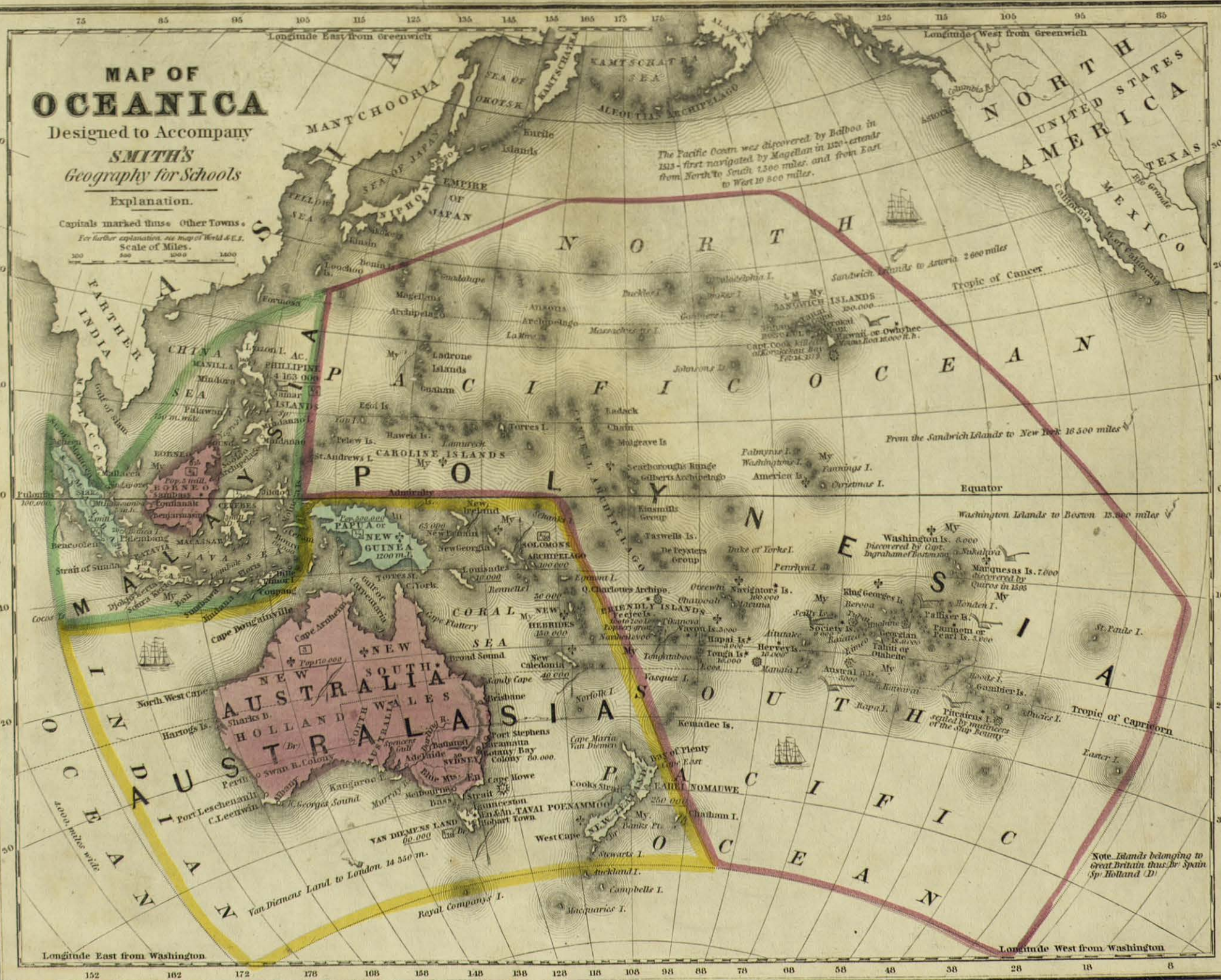


From the Sandwich Islands to New York 16 500 miles

Equator

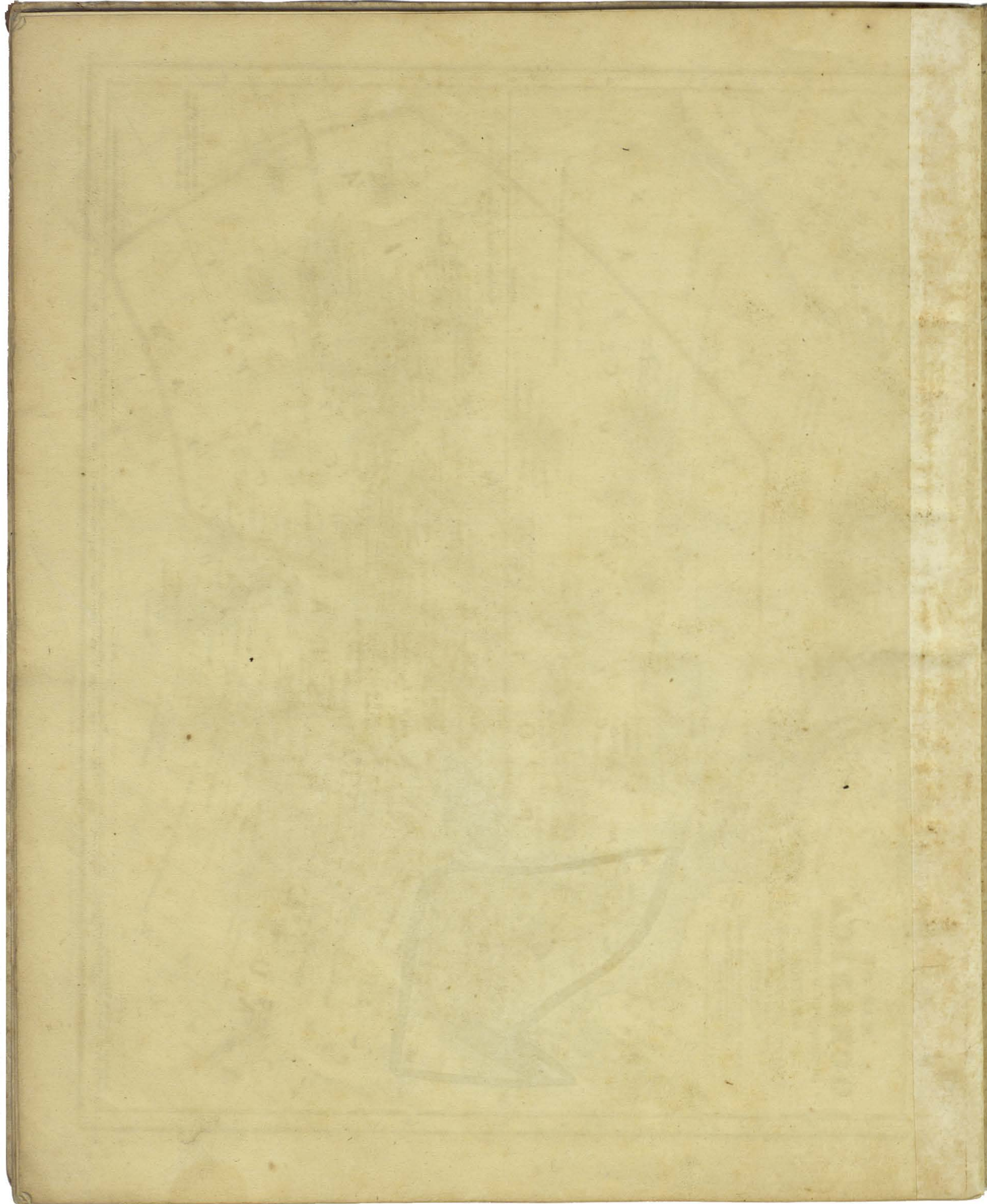
Washington Islands to Boston 15 800 miles

Note Islands belonging to Great Britain thus: Br Spain (Sp) Holland (D)

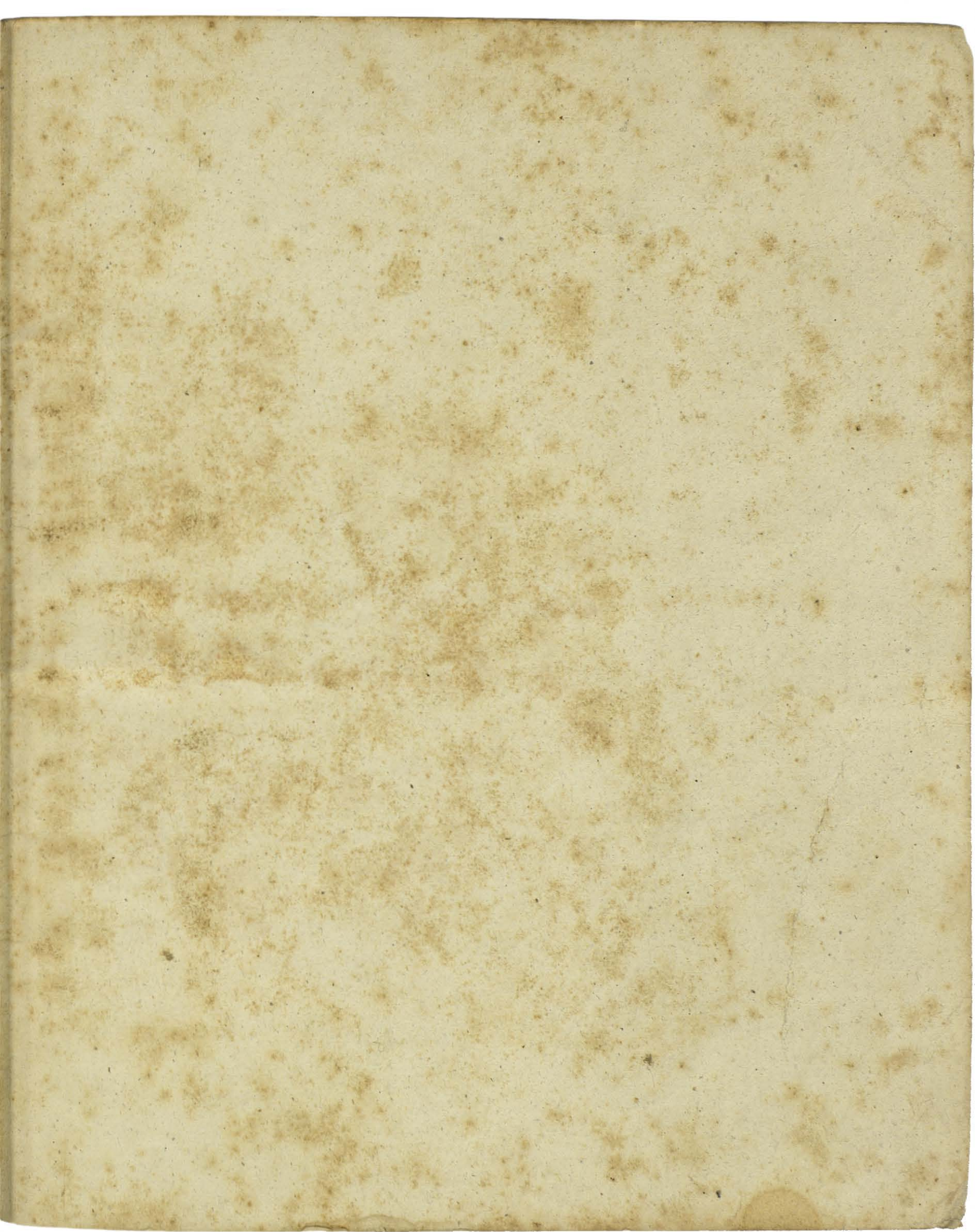


Entered according to Act of Congress in the year 1839, by Daniel Burgess in the Clerk's Office of the District Court of Connecticut.











# SMITH'S SCHOOL AND FAMILY ATLAS.

On the publication of the late Geographical Dictionary of J. R. McCulloch, Esq., an examination of its contents showed most conclusively that much that is contained in former treatises, had become obsolete; and consequently, a revision of both book and Atlas, seemed indispensable to a correct knowledge of this subject.

In preparing this edition for the press, the Gazetteer and Map\* of the United States, by J. O. Smith, Esq., and the Geographical Works† of J. R. McCulloch, have been generally followed, the former (by permission of the author,) in respect to our own country; the latter, in respect to all foreign countries.

These corrections have been made with a scrupulous regard to the pledge given to the public in 1840, viz. "No other alterations will hereafter be attempted, but such as the progressive changes in the science may require. These, it is intended, shall not change the form of the book, or impose any impediment to the use of the different editions in the same class."

Valuable additions have been made to the Atlas and the system of EMBLEMS and ABBREVIATIONS, consisting of pictures of stars, crosses, books, steamboats, &c., which is rather imperfectly exhibited on the Map of the World, (for want of room,) is fully carried out on the other maps. These are so conspicuously arranged, that the GOVERNMENT, RELIGION, STATE OF SOCIETY, POPULATION, NAVIGATION, &c., of the more important countries, become apparent at first glance, and by thus calling into simultaneous exercise the powers of the mind and eye, impressions are doubtless made, more abiding than by any other means whatever.

The present Atlas is now offered to the public in the confident belief, that for a plain and lucid arrangement of matter, correctness of detail, and beauty of execution, it is fully equal to any School Atlas; but if regard be had to the statistical information in connection with the additional number of Maps, and the enlarged scale of others, it must be confessed superior to any similar work before the public.

## CONTENTS.

1. Map and Chart of the World, . . . . .	Page I.
2. Map of the World, (Polar Projection.) . . . . .	II.
3. Chart of Central Europe, . . . . .	II.
4. Map of North America, . . . . .	III.
5. Map of Mexico, Guatemala and Texas, . . . . .	IV.
6. Map of the United States, with the population, . . . . .	V.
7. Eastern States, No. 1.‡ . . . . .	VI.
8. Eastern States, No. 2.‡ . . . . .	VII.
9. Long Island,‡ . . . . .	VII.
10. Middle States, . . . . .	IX.
11. Southern States, . . . . .	XI.
12. Western States, . . . . .	XIII.
13. Michigan and Wisconsin, XIII.-XIV.	
14. South America, . . . . .	XIV.
15. Europe, . . . . .	XV.
16. Denmark, : . . . . .	XV.
17. France, . . . . .	XIV.
18. West Indies, . . . . .	XV.-XVI.
19. British Islands, . . . . .	XVI.
20. Shetland Islands, . . . . .	XVI.
21. Central Europe, . . . . .	XVII.
22. Spain and Portugal, . . . . .	XVII.
23. Greece and the Ionian Isles, . . . . .	XVII.
24. Asia, . . . . .	XVIII.
25. Armenia, . . . . .	XVIII.
26. Syria, . . . . .	XVIII.
27. Africa, . . . . .	XIX.
28. Liberia, . . . . .	XIX.
29. Egypt, . . . . .	XIX.
30. Oceanica, . . . . .	XX.

Large Maps of MICHIGAN, WISCONSIN and the WEST INDIES, were added, September, 1844.

\* The largest, and undoubtedly the best Map before the public.

† This valuable work is now being republished in this country.

‡ Given separately on the Map of each State.

§ Re-drawn and enlarged.