

REARZED
CONTELA ROTTED SKETCH NO. 13

Margaret

See New Sketch of Book A

Hardeman Co.

H & T. C. R. R. Co.

Bl. A.

H & T. C. R. R. Co.

H & T. C. R. R. Co.

Bl. B.

Knox Co.

H & T. C. R. R. Co.

Bl. C.

Bl. No. 44.

See Sketch file # 11.

H & T. C. R. R. Co.

Bl. No. 43.

D. C. Burnett

See Knox Co. Sketch # 17

I R. M. Kenny, State Surveyor, I hereby certify that this sketch shows the true and correct position of surveys represented thereon, as re-surveyed by me on the ground 1858.
R. M. Kenny
State Surveyor

Filed April 20 1859
R. M. Kenny
Chief Clerk

FILED SKETCH NO. 12
COUNTY
KNOX

See Sketch # 11

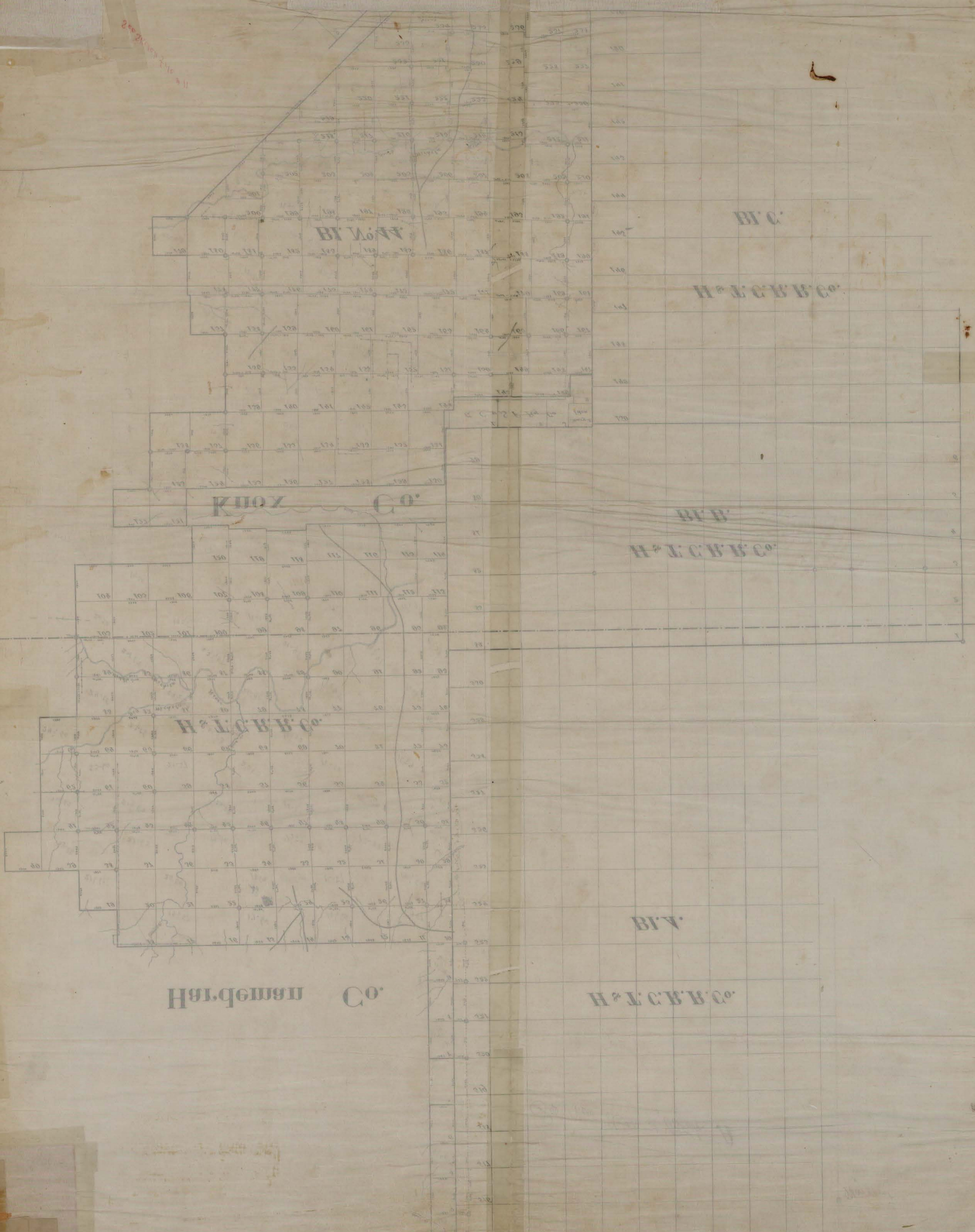
72.00

See Sketch # 11

Sketch 12
Knox County
Block 44

Handwritten notes in the top right corner, including "Block 44" and "Sketch 12".

Handwritten text "H. J. C. B. V. Co." in the upper left quadrant of the map.



Sketch 12
Knox Co.
Block 44

Knox COUNTY ROLLED SKETCH NO. 12
 Sketch of Blk 44 and Ecb. in West Part of Co.
 SURVEYED 1888 BY F. M. Kenney
 [Statement Blk 44] FILED April 23, 1889

Small text at the bottom right corner, possibly a printer's mark or reference code.

Statement relative to the location of surveys
Nos. 1, 2, 3, 4, & 17 in name of D. G. Burnett
situated in Knox County on the north side of
the East Fork of the Brazos.

Began work at the original S. W. corner of
No. 1, D. G. Burnett - a small rock pile, on
the west end of a large red bluff from
which a mesquite br. N. 30° E. 18 vrs. and a
cedar N. 5° W. 16 vrs. Both bearings are found
the mesquite standing and well preserved -
but the cedar has fallen, but plainly marked.
This is undoubtedly the original corner, hav-
ing been long known and recognized.

First as to the variation at which the
original work was run. This was deter-
mined not by a run from one
old corner to another, but by follow-
ing the meanders of the river as called
for in the notes, and finding what va-
riation would fit best along the river
from known points. For instance the
S. E. corner of #3, an old corner and where
evidently there had been no change in
the course of the river.

The first call in the field notes of T. Seguin
at S. E. corner of 3, from which 6 cotton-
wood br. N. 32½° E. 155 vrs. The bearings are
still standing and plainly marked.

Thence down the river N. 43° E. 1020 vrs.

Here evidently the river has retained its
old channel and 10° va. E. fits very
well. By referring to the field notes of

1 #29 - we find the cases as follows.

2 Begin at a stake on the south bank the N.E.
3 corner of #16. Thence down the river N. $36\frac{1}{2}$ E.
4 510 vs. N. 13 E. at 60 vs. a spring branch.

5 Here the branch is found, and the banks
6 on the south side are solid rocky bluffs for
7 a considerable above and below this case
8 for the branch, and there is no doubt that
9 when the river now is was the channel when
10 these surveys were made. Here again I
11 find 10 vs. fits remarkably well.

12 From this data I determined to adopt 70° E.

13 Now as to the final locating on the ground.

14 Begin at S.W. corner of No. 1. D. S. Burnett.

15 Thence East 1815 vs. a point, thence south

16 723 vs. the S.E. corner of #1. original corner

17 from which a mesquite br. North 80 vs.

18 This bearing is found plainly marked

19 From the above run it will be seen there

20 is an excess of 48 vs. in Easting and that

21 the S.E. of #1. is 282 vs. north of the point

22 called for in the field notes. And as the

23 East line of #1 will begin at the old corner and

24 run North 7627 vs. West 1815 vs. to its N.W.

25 corner, thence south to the beginning-

26 the west line will be increased by 282 vs.

27 making it 6900 vs.

28 I na. Begin at the S.E. #1. Thence East 3620

29 the S.E. of #3. the original corner from

30 which 6 cottonwood br. N. $32\frac{1}{2}$ E. 155 vs.

31 From this run it will be seen that

32 from the S.E. #1. to S.E. #3. there is an

1 excess of 86⁵ vs. E. + W. and the S.E. of # 3.
2 is 214 vs. North of the points called for in
3 the filed notes. Locating the S.E. Q. by
4 course and distance, it will be 31 vs. South
5 of the S.E. of # 3. and the east line of # 3.
6 will be 7187 vs. as called for in the notes
7 whilst its west line will be increased
8 214 vs. making it 7238 vs. Throwing
9 all the excess into No. 3. its easting and
10 westing will be 18⁵² vs. No other cor-
11 ners having been found, # 4 and
12 # 17 were located by course and
13 distance.

14 The following connecting line was
15 run from S. W. corner # 1. D. G. Burnett
16 to S. W. corner of # 242 B.C.R. 44.

17 Begin at the original S. W. corner
18 of No. 1. D. G. Burnett. Thence North
19 6900 vs. its N.W. corner. Thence North
20 2785 vs. a point, thence East 230 vs.
21 to the S. W. corner of 242 B.C.R. 44.
22 H. & T. C. R. R. Co.

23 R. W. Kenney
24 State Surveyor.

25 Feby. 20. 1889.

243

Sketch 12
Knox County
Block 44 by
R. M. Kenney State Surveyor

See Sketch

Keep With

KNOX COUNTY ROLLED SKETCH NO. 12

Statement of Block 44

SURVEYED

BY R. M. Kenney

FILED April 23 1889

counter 71663