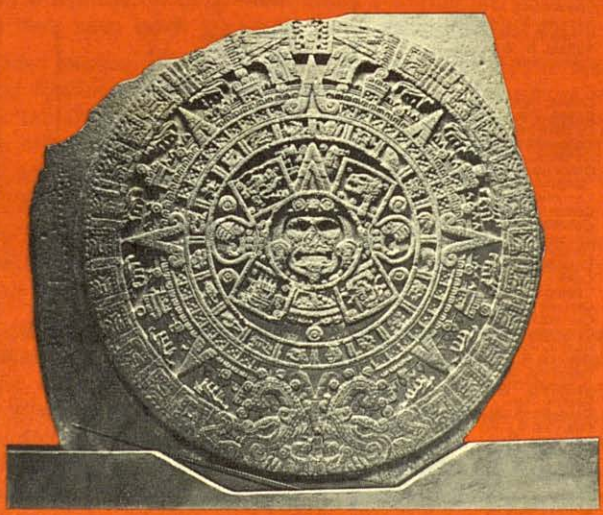


R6.50

NATIONAL RAILWAYS OF MEXICO



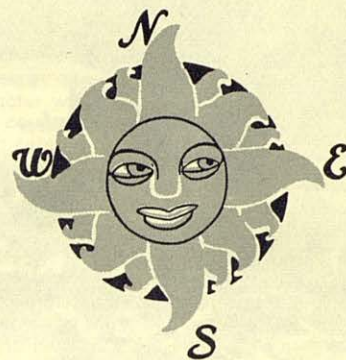
WINTER-SPRING
1966

94189

MEXICO



Sunshine Over the Border

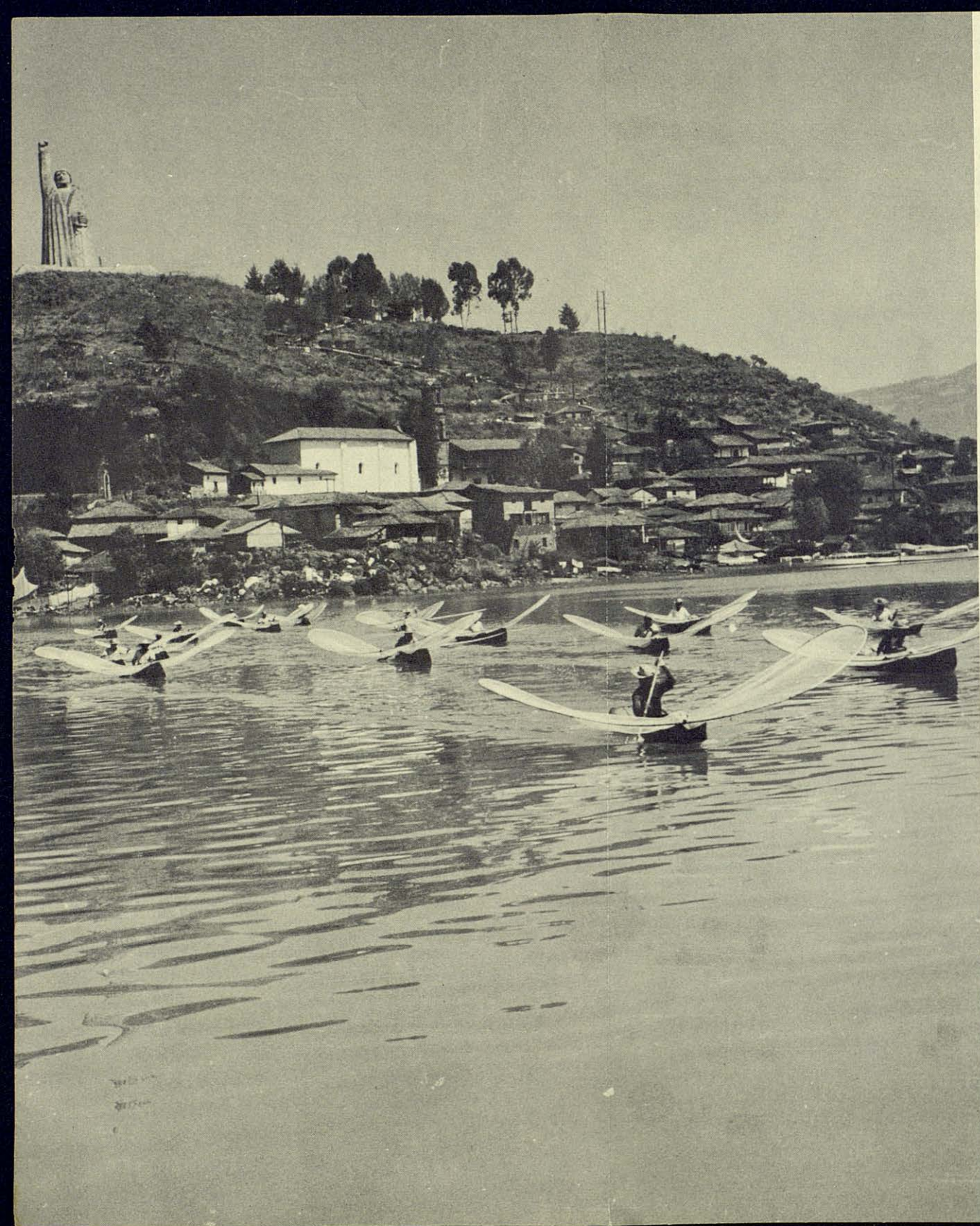


Mexico has been described as a land of contrasts. In comparison with United States and Canada these are as numerous as they are varied but each is infallibly interesting and adds a thrill to one's visit. Nothing is so restful as a complete change from the native surroundings. Probably the most marked contrast is the consistent pleasure of life in the open. Sunshine Over the Border is the most vivid impression from a visit to your nearest nation which speaks a language other than English.

The change requires no passport, no journey to the sea, no special items of wardrobe or impediments, no elaborate preparation of any sort. One can enjoy the thrills of complete alienation from usual sights and sounds and yet sense none of the uneasiness of separation sometimes felt abroad. It really is as simple as that.

In Mexico you are torn between settling down to explore a given spot or sampling the countless vacation regions. The only answer to the dilemma, of course, is to return again and again and thousands are doing just that. How else can you enjoy fully this "Faraway Land Nearby"—the Mexican slogan for tourism which puts the main appeal into a phrase.

A glance at the map will give you some small idea of the great number of choices that are before you for your Mexican vacation: Guadalajara, Guanajuato, Oaxaca, Cuernavaca or Lake Pátzcuaro, Morelia and Uruapan. The Spa of Peñafiel or the gardenia country about Fortín, Córdoba and Jalapa. For recuperative advantages the radioactive waters of San José Purúa. Then Veracruz, Mazatlán, Manzanillo and if you so desire, as far away as Mérida or the ever popular Acapulco.



Fishermen at Lake Pátzcuaro.
Janitzio Island in background.

GO TO MEXICO BY RAIL FOR THE FUN OF IT!

"Have fun as you go" is a new travel concept to a large number of visitors to Mexico who prefer to travel by rail. Besides, the trip costs less, and the one-day journey from the border makes an exhilarating overture to the thrill of being in a land of many vacation lands—truly a masterpiece of geographical condensation. Within its borders, thriving in a modern nation, are many self-contained worlds. Each has its own color and culture, its special art and architecture, its unique life and laughter.

It is easy to make connections for Mexico from any city in the United States. The three principal rail gateways are Laredo, El Paso and Nogales. Through the first of these the "Aztec Eagle"—"Texas Eagle" north of San Antonio—is operated daily from St. Louis, Missouri, to Mexico City. To insure on-time arrivals a new fleet of Diesel engines shuttles between the border and the capital.

The "Aztec Eagle" carries up-to-date, air-conditioned sleepers, dining and lounge-observation cars, and the general standard of service is fairly equal to that of the American railways.

The traveler has a real scenic treat the moment he rolls across the border—formalities are simple and are soon over, and Mexico unfolds its endless plains dotted with Indian villages, changing lights and colors on the silent mountains. From Nuevo Laredo the route runs direct to Monterrey, a thriving industrial center with its spacious, comfortable hotels. Here the Pan-American highway continues due south, but the railway branches west to tap the mining and manufacturing districts in the northern provinces. Three-and-a-half-hours from Monterrey the train glides into Saltillo, famous for its gaily-colored sarapes. It is a pleasant town, hedged about by orchards of pears and quinces, and is well-provided with first-class hotels.

The next stop is San Luis Potosi, an old mining center with fascinating architecture and a balmy climate. Soon after passing the town of Dolores Hidalgo, cradle of the Mexican independence movement, the train enters the grain-growing Bajío country, the great loamy plain of central Mexico, with its sombre skies and translucent lakes.

San Miguel de Allende, a charming and unusually well-preserved Colonial town, is well worth breaking the journey to see. The International School of Fine Arts attracts students from all parts of the United States. San Miguel's quiet little plaza, whose silence is broken only by the mellow ringing of church bells, is a haven for artists and retired Americans, many of whom have remodeled the former residences of wealthy *hacendados* into winter retreats.

Further on is Querétaro, the historic city where the Mexican constitution was signed. Opals are sold alongside the train, while the town itself is pleasant and attractive, containing the Convent of Santa Rosa de Viterbo, which is largely the work of the great Mexican architect Tresguerras. It is highly ornamented and daringly original. The Convent Church of Santa Clara, also reconstructed by Tresguerras, has tower and dome of glazed tile, and the interior is richly decorated. The Federal Palace is Mooresque, and contains a small, charming museum. Everybody goes to the Hill of Bells (which has a small chapel to the memory of Maximilian, and a fine view over the city and valley) and to the great aqueduct, with its seventy-four marvelous arches framing the landscape.

Eventually the train draws into Buenavista Grand Central Station in the heart of Mexico City—it is a brand new station completely modern in design and equipped with every possible convenience for travelers and for the rapid handling of luggage. The ribbons of rail of the "Aztec Eagle" route which stretch south from the U.S. border to Mexico City span tablelands and valleys traversing in all some 800 miles of matchless scenic splendor. Different views, no less spectacular, will unfold before the eyes of the train traveler making the return journey via the El Paso route.

Returning to Querétaro, the line swings to Irapuato, famous for its all-year-round delicious strawberries, and thence to Silao, the market for curious inlaid boxes and quaint toys. From here Guanajuato may be reached on a branch line, an hour away and in comfortable Pullman sleeper from Mexico City. On Guanajuato's outskirts is the famous cemetery where mummies, exhumed bodies which the dry mountain air has preserved for centuries, are buried above ground. Guanajuato was once the richest city in the Spanish Americas, a fabulous silver and gold-mining capital. It is situated in a mountain cleft, with the main avenue down the center, and all the other streets winding upward on either side. Most of the streets are no more than crooked narrow lanes, some with steps rather than an even grade. Little parks and squares dot Guanajuato, and new beauties are revealed at every turn in the cobbled ways.

The itinerary also includes Aguascalientes, named for its therapeutic springs; Zacatecas once a mining center of the old Colonial days. This is a vast section of modern Mexico, for Torreon's cotton mills, factories and smelters are not more than sixty years old; Chihuahua, further north, is the country of the legendary Pancho Villa, that vastly picturesque character who was a moving spirit in the great 1910 Revolution. The country here looks much like that of Texas, which in fact, is soon entered by way of the Ciudad Juárez-El Paso gateway. These two routes offer almost unlimited invitations to the tourist to break his journey if time permits, and are yet only a part of the attractions which Mexico has to offer.

On the west coast, train travel means entering Mexico via Tucson, Arizona, and Nogales, with a possible stopover at Hermosillo, or at the luxurious fishing resort of Guaymas. From there the line drops into rich and varied tropical scenery to the enchanting port of Mazatlán, then along to Guadalajara and the great calm lake of Chapala, thence into Bajío country, to join the other entry lines at Querétaro.

It is only overnight from Guadalajara to Mexico City. In the early morning you find that your train has entered the storied Valley of Mexico, which in past old times was the Kingdom of Moctezuma. Mexico lies in a great valley, surrounded by rugged craters of extinct volcanoes and guarded, in the southeast, by the snow-capped peaks of Popocatepetl and Ixtaccihuatl. The great plaza or Zócalo, built over Moctezuma's temple, is the heart of the city. There is the domed and towered cathedral; Monte de Piedad (the National Pawnshop) a museum in itself; the block-long National Palace with its Museum, endless courtyards, historically-furnished chambers, and Diego Rivera murals; the Municipal Palace or City Hall; the Supreme Court of Justice, with frescoes of Orozco. All of these buildings are of great architectural interest. A cosmopolitan city, Mexico offers all the hotel and entertainment facilities of a major world capital. It is a city of broad boulevards, parks, gardens, handsome residences and show places. Here it is that the visitor captures almost at a glance Mexico's contrasting facets—the Spanish Colonial, the French renaissance and streamlined ultra-modern. The metropolis was erected on the very site of the Aztec capital.

And within Mexico itself—the tourist belt—the railroads can satisfy all your sightseeing desires. They can take you to off-the-beaten-track towns, to see coastal resorts, wonderful spas, the tangled jungles of the Isthmus of Tehuantepec, down to the border of Guatemala, or the southern reaches of Mexico's deep south that became available with the tri-weekly sleeping car service between Mexico City and Mérida, in the Yucatán peninsula, that sticks out eastward forming, with sand and palm, the southern boundary of the Gulf of Mexico. This land is strewn with probably the finest collection of discovered Mayan ruins, like Palenque, Uxmal, and Chichen Itza, and undiscovered buried cities that any country can boast.

THE NATIONAL RAILWAYS OF MEXICO

offers you these side-trips from Mexico City,
that combine comfort, relaxation and recreation

take you there in three hours. Rate 92c each way. See table 27-a.)

Overnight tours: GUADALAJARA

Second city of the country, Guadalajara makes a delightful side trip from Mexico City, in air-conditioned Pullmans and in deluxe accommodations. It is a bustling, modern city in many ways—yet you will discover splendid colonial cathedrals, and you will ride around its streets in horse-drawn carriages. Nowhere will you see a finer market, filled with all kinds of pottery; here the emphasis is on bird and flower patterns, generally on a cream or tan background. Glassware of striking design, and hide-covered furniture are two of the other crafts developed by this city. A gentleness pervades the great market places and even the busy arcades crowded with stores. Guadalajara's tiled walks are made for strolling, her parks for contemplation. One-way rail fare \$4.02. Pullman: Lower \$3.00; upper \$2.40; single roomette \$4.19; double bedroom \$5.99; compartment \$8.38; drawing room \$11.37. (See tables G and 15.)

GUANAJUATO AND SAN MIGUEL ALLENDE

Guanajuato, that old and picturesque town is linked to Mexico City by an overnight pullman sleeper (see tables L and 12). Lying in a deep mountain crevice, the regal old houses with their balconies crowd out into the narrow cobbled streets, so that the roof tops seem to touch one another. Guanajuato offers you the splendor of its typical architecture. Once the richest mining center of the Americas, today it lives in the past giving its visitors the opportunity to be transported into the old Spanish days. **San Miguel Allende** is a Colonial town discovered two decades ago by American visitors. Its background of centuries of legend no less than its intimate quality of life have made it the favorite haunt of artists and writers. Here the seminar of the Escuela de Bellas Artes is held semiannually and offers courses in various forms of art and decoration under the tutelage of masters from Mexico and the United States. Close by is the Spa of Taboada with its health-giving thermal waters. San Miguel Allende is easily reached from Guanajuato through a good paved road or directly from Mexico City on the Aztec Eagle trains Nos. 1 and 2. One-way rail fare to Guanajuato \$2.68. Pullman: Single roomette \$2.86; double bedroom \$4.08; compartment \$5.72. To San Miguel Allende, rail fare \$2.16. Pullman seat \$1.20. (See tables A and 1.)

PATZCUARO AND URUAPAN

These are two of the most delightful tours in Mexico, one of them a quaint fishing village on an azure lake, the other a semi-tropical town set in the lushness of gardens and banana plantations. At Patzcuaro you will photograph the hardy Tarascan Indians, who daily sail out onto the



The "Atlantes."—Toltec civilization, archeological zone of Tula, State of Hidalgo.

The average visitor will wish to make Mexico City his base of operation for such side trips since it is one of the gayest metropolises of the continent. In the luxurious night clubs and country clubs, at the bull fights and horse races, you may rub shoulders with the great artists and writers, and industrialists, big and small from all over the world who are inclined like you to forget business to enjoy Mexico.

A nearby trip a few hours away:

PUEBLA: . . .

Dominating the plaza and the city is the seventeenth century Cathedral with its great green-gold dome and interior lavishly decorated with marble, onyx and gold leaf. Other buildings of special interest in Puebla are the Secret Convent of Santa Monica, the Casa del Alfeñique and the Casa de los Muñecos. Here you can buy gorgeous tiles, fine glassware and the historic Talavera pottery. (The National Railways of Mexico operates now a most modern diesel coach, air-conditioned with reclining seats that will

lake in their crude boats, returning in the evening with their catch. At Uruapan you will walk along rushing streams and stop to admire waterfalls and jungle flowers. Here, too, you may buy the famous lacquer bowls. And in both Patzcuaro and Uruapan you will come to know something of rural Mexico, of its simplicity, and of its still primitive ways of tilling the fertile soil. One-way rail fare to Patzcuaro \$1.94. Pullman: Lower \$2.19; upper \$1.75; drawing room \$8.30. To Uruapan, rail fare \$2.45. Pullman: Lower \$2.56; upper \$2.05; drawing room \$9.73. (See tables 1 and 16).

VERACRUZ

Veracruz is Mexico's principal seaport. It offers a wealth of historical lore, its grim fortress of San Juan de Ulua, and other remnants of ancient days remind the visitor that in this port town Cortes first set foot in the New World and it continues to remain the most Spanish of all Mexican cities. At dusk the open-air cafes skirting the town's main plaza are the meeting place of gay Veracruzanos. In the blue waters and sandy beaches of the Gulf of Mexico there are all facilities for fishing, swimming and a restful holiday. One-way rail fare \$2.34. Pullman: Lower \$2.19; upper \$1.75; single roomette \$3.06; double bedroom \$4.37. (See tables F and 25).

OAXACA

Oaxaca is a city of seventy thousand friendly persons who enjoy making visitors feel at home. It is the center of a region which includes some of Mexico's finest pre-Spanish remains and numerous simple Indian villages which specialize in beautiful handicrafts. It is a pleasure to stroll past Colonial houses decorated with delicate iron-work, to take a look at Santo Domingo, which is considered among the two or three finest examples of church art in Mexico. Here also are the amazing ruins of a former civilization, at Mitla and Monte Alban. From the latter have come a collection of jewelry made of gold and precious stones. These treasures are exhibited at the local museum. One-way rail fare \$2.93. Pullman: Single roomette \$4.01; double bedroom \$5.72; compartment \$8.01. (See tables J and 23).

FORTIN, CORDOBA AND ORIZABA

Fortin is a veritable flower garden where you swim in pools covered with gardenias and where orchids are a peso apiece. Further afield is Orizaba that affords one of the most striking contrasts of snow and tropic foliage. Above the camellias and the flowers rises the white-crested highest mountain in Mexico, the Pico de Orizaba. In the opposite direction lies Cordoba where the houses still have iron-barred windows, wooden balconies and massive doors studded with hand-wrought copper nails. In the environs are pineapple and coffee plantations. One-way rail fare to Fortin \$1.82. Pullman: Lower \$2.02; upper \$1.62; double bedroom \$4.04; compartment \$5.65; drawing room \$7.66. One-way rail fare to Córdoba \$1.87; to Orizaba \$1.72. Pullman to both: Lower \$2.02; upper \$1.62; drawing room \$7.66. (See tables F and 25).

MONTERREY

Monterrey is a thriving industrial city and Mexico's most progressive manufacturing center, with nearly 700 thousand inhabitants. The city has a dramatic appeal and there is much to see—the Cathedral on the Plaza Zaragoza, El Obispado (Bishop's Palace) built in 1736 and now a historic museum. From here there is a spectacular view of the city and the Saddle Mountain. Visitors are welcome to

the factories and in particular for a conducted tour of the brewery. Nearby are the Chipinque Mesa (Dude Ranch) high up in the wooded mountains, the Horsetail Falls and the Juajuco and Estanzuela Canyons. Only 15 hours by fast, all-Pullman train—El Regiomontano—from and to Mexico City. You leave either end at 6 p.m. and arrive at the other at 9 a.m., well-rested and refreshed after a good night's sleep. One-way fares. Rail: \$6.59. Pullman: Lower \$4.77; upper \$3.82; single roomette \$6.67; double bedroom \$9.53; compartment \$13.34; drawing room \$18.11. (See tables A and 1).

Round-trip fares to all these places -both rail and Pullman -are twice as much as those shown for one-way trips.

TODAY, SPLENDID RAIL ACCOMMODATIONS, FAST SCHEDULES AND HIGH CLASS HOTELS IN ALL THESE CITIES COMBINE TO MAKE THE ABOVE SIDE TRIPS THE MOST FASCINATING PART OF YOUR VACATION.

MEXICO CITY HOTELS, BARS, DANCE SPOTS AND RESTAURANTS

PRINCIPAL HOTELS IN MEXICO CITY

(Numbers within a small circle show location in map on page 6)

- ②ALAMEDA Avenida Juárez 50
- ⑩ALFFER Revillagigedo e Independencia
- ⑩BAMER Juárez y Luis Moya
- ⑩CONTINENTAL-HILTON Reforma 166
- ⑩CORTES Av. Hidalgo 85
- ⑩DEL PRADO Juárez 70
- ⑩DEL PASEO Paseo Reforma 146
- EL DIPLOMATICO Insurgentes Sur 1105
- ⑩EL PRESIDENTE Hamburgo 135
- ⑩FRANCIS Reforma 64
- ⑩GENEVE Londres 130
- ⑩LINCOLN Revillagigedo 24
- ⑩MAJESTIC Madero 73
- ⑩MARIA ISABEL Paseo Reforma 325
- ⑩MONTE CASSINO Génova 56
- ⑩MONTEJO Reforma 240
- ⑩PLAZA VISTA HERMOSA Sullivan and Insurgentes Sur
- ⑩PREMIER, Milán 11
- ⑩PRINCE Luis Moya 12
- ⑩REFORMA Reforma y Paris
- ⑩REGIS Juárez 77
- ⑩RITZ Madero 30
- ⑩TECALI Mariano Escobedo 736

COCKTAILS AT SIX?

Good liquor, skilled bartenders, discreet music, lots of that intangible "atmosphere," at:
 Mayan Bar or La Joya, both in the Hotel Continental-Hilton—Reforma 166
 Hotel Alameda "La Brasserie"—Juárez 50
 Indra Bar, Alffer Hotel—Revillagigedo 18
 Montenegro or Nichte-Ha, both in the Del Prado Hotel
 Jardin, at the Reforma Hotel—Corner of Reforma and Paris
 The Roof or the bar of the Bamer Hotel—Juárez 52
 Ritz Bar at the Ritz Hotel—Madero 30
 Del Paseo, Paseo Reforma 146
 Muralto.-Latino-Americana Tower
 Bar of the El Presidente Hotel—Hamburgo y Amberes
 La Faena, in the Hotel Plaza Vista Hermosa—Sullivan 1
 Roof of Hotel Tecali—Mariano Escobedo 736
 Panorama, Hotel del Paseo—Paseo de la Reforma 208
 Bar "Veranda" and "Jorongo" both at Hotel Maria Isabel—Paseo de la Reforma 325

. . . And the BEST DINE & DANCE SPOTS?

Capri (At the Hotel Regis: shows at 11:00 and 2:00).
 Jacarandas (accent on food and drink).
 Belvedere (atop the Continental-Hilton).
 Le Chanteclair (Mezzanine of the Reforma Hotel).
 Can-Can (Génova 44)
 Los Globos (Insurgentes Sur 810).
 La Fuente (Insurgentes Sur 890).
 Terraza Cassino (Insurgentes Sur 953).
 Senorial (Hamburgo 188).

. . . and lots of others as any resident or taxi driver will tell you . . .



MEXICO CITY'S RESTAURANTS

Excellent, expensive food is served with a flair at . . .

- ① AMBASSADEUR (French cuisine), Paseo de la Reforma 12
- ② DELMONICO's (American), Londres 87
- ③ FOCOLARE (European), Hamburgo 87
- ④ JENA (European), Hamburgo 87
- ⑤ NORMANDIE (French), López 15 and Reforma y Niza
- ⑥ RIVOLI (European), Hamburgo 123
- ⑦ VILLA FONTANA (European), Paseo de la Reforma 240.
- ⑧ LOREDO (Mexican) Hamburgo 29

BUT . . . you can also eat well at:

(American Cuisine)—

Camichín—Hotel Alameda

⑨ Veranda, Hotel Maria Isabel—Hotel Continental-Hilton Sanborn's, Madero ⑭; Reforma ⑮; Hotel Del Prado ⑯; Salamanca; Niza y Hamburgo ⑰

⑳ Shirley Courts—Villalongin 139

⑲ Del Prado Grill, Hotel Del Prado

⑳ Bamer Hotel Dining Room and Roof Garden

㉑ Jardín, Hotel Reforma

Hoyo 19, Paseo de la Reforma 432, and Insurgentes.

(European Cuisine)—

㉒ Lincoln Hotel, Revillagigedo 24.

㉓ The Derby, Paseo de la Reforma 400.

(French Cuisine)—

㉔ Perigord, Yucatán 32.

㉕ Napoleon, Huichapan 25

㉖ Passy, Ambers 10.

(German Cuisine)—

㉗ Bellinghausen, Londres 95.

El Casino, Oaxaca 42.

(Italian Cuisine)—

㉘ Cardini International Av. Morelos 98

Paolo's, Gante y 16 de Septiembre.

Embassy, Calzada del Desierto 67, San Angel.

Napoli, Altavista 42, San Angel.

㉙ La Veranda d'Italia, Azueta e Independencia

(Jewish-American Cuisine)—

㉚ Kineret, Génova y Hamburgo

㉛ Carmel, Génova 70.

(Mexican Cuisine)—

㉜ Café Tacuba, Tacuba 28.

㉝ El Refugio, Liverpool 166.

㉞ El Taquito, Carmen 69-A.

Fonda Santa Anita, Humboldt 48 and Insurgentes 1089.

㉟ Flor de Lis, Huichapan 21

El Gallo, Yácatas 178.

El Abajero, Insurgentes 858.

(Spanish Cuisine)—

㊱ El Parador, Niza 17.

㊲ Casino Español, Isabel la Católica 29.

㊳ Prendes, 16 de Septiembre 10.

(Swiss Cuisine)—

㊴ Chalet Suizo, Niza 37.

㊵ Swiss Pavillion, Plaza Miravalle 17.

(Viennese Cuisine)—

Vienna, Plaza Popocatepetl 33-A.

(Oriental Cuisine)—

㊶ Tibet Hamz, Juárez 64.

㊷ Luau's, Niza 36.

㊸ Mauna Loa, Hamburgo y Florencia (Hawaiian).

A WORD TO THE TRAVELER

AS FOR CLOTHES . . .

Travel light. Two or three handbags should suffice for the ordinary trip. If you expect to visit any of the seacoast resorts or the tropics take lightweight summer clothing and a lightweight topcoat. Otherwise, Spring or Fall clothes are good all year in Mexico.

Important items in the female wardrobe are at least one suit, several blouses, one dark silk dress, a lightweight wool, a print dress, two or three washable dresses, and in-between season coat. For walking on those cobbled village roads, be sure to take along a pair of walking shoes. Any unexpected wardrobe lacks can be supplied by the well-stocked Mexican stores.

ENTRY RULES . . .

No passport is required of American tourists. All you need is a tourist card which may be obtained for \$3.00 from your nearest Mexican Consul or from the Official Agents of the Mexican Government Tourism Department at 210 North Michigan Avenue, CHICAGO 3, ILL. (Tel. 263-6890).—1905 Commerce St., DALLAS 1, TEX. (Tel. RI-7-3479).—809 Walker Ave. Suite 146, HOUSTON 2, TEX. (Tel. CA-5-5935).—3106 Wilshire Blvd., LOS ANGELES 5, CAL. (Tel. DU-5-1855).—First National Bank Bldg. Arcade, Office No. 20, MIAMI 5, FLA. (Tel. FR-1-8037). 203 St. Charles Street, NEW ORLEANS 12, LA. (Tel. JA-5-2783).—630 Fifth Ave., Suite 3508, NEW YORK 20, N. Y. (Tel. CO-5-4696).—209 E. Travis St., SAN ANTONIO 5, TEX. (Tel. CA-3-6612).—1301 Fifth Avenue, SAN DIEGO 1, CAL. (Tel. 2-6757).—80 North Stone Avenue, TUCSON, ARIZ. (Tel. 792-3486).—1302 Connecticut Ave. N.W., WASHINGTON, 6, D. C. (Tel. AD-2-6622).—**In Canada:** International Aviation Bldg. Annex First Floor, 700 Dorchester Blvd. West, MONTREAL 3, P.Q. (Tel. UN-6-4079).—13 Bloor Street West, TORONTO 5, ONT. (Tel. 922-5874).—**In England:** Slat 1, 6161, Jermyn St., LONDON, S.W.1. It is not necessary to apply in person; a tourist card can be procured by mail or through an authorized agent. It is valid for 180 days. Tourist cards are also issued at the border to those who have not previously obtained them. Citizens of other countries require visitors' visas. You should also carry a certificate showing vaccination against small pox and reaction. **IMPORTANT.**—There is also available a tourist card valid for 30 days which may be obtained **FREE OF CHARGE.**

AT THE BORDER . . .

Courteous immigration and customs officials quickly examine your Tourist Card and luggage, sign and stamp them, and welcome you to Mexico. Train passengers traveling in the through pullman sleepers or reserved-seat coaches are not obliged to leave the train. You may bring any reasonable amount of personal clothing and jewelry, together with a camera and similar articles for your own use. Returning to the States, these same personal effects are duty-free, as well as one hundred dollars worth of merchandise bought as souvenirs.

CLIMATE . . .

In Mexico City the days are usually mild and the nights delightfully cool, with the temperature ranging from 35° F., with a mean temperature of 65° F.



One of the new look constructions in Mexico City. The 44-story "Latino Tower" next to the Palace of Fine Arts.

Other Towns . . .

Cool Country: Guanajuato, Pachuca, Pátzcuaro, Puebla, Teotihuacan, Toluca, and Zacatecas are in the cool country, which ranges upward from 6,500 feet, where the average temperature is from 59° F. to 62° F., with slight changes, except in winter. Then it may go down to 30° F. or 40° F.

Temperate Country: At the lower altitude is the temperate country, which ranges from 3,000 feet to 6,500 feet. Located in this region are: Chihuahua, Cuernavaca, Fortin, Guadalajara, Morelia, Oaxaca, Orizaba, Querétaro, Saltillo, San Luis Potosí, San Miguel Allende, Tasco, Tehuacan and Uruapan. The average yearly temperature is from 62° F. to 77° F., with little variation. Many health resorts are located here, as the dry, clear air is exhilarating and beneficial.

Warm Country: Acapulco, Coatzacoalcos, Colima, Córdoba, Guaymas, Mazatlán, Mérida, Monterrey, Manzanillo, Tampico and Veracruz are in the warm country, which begins at sea level and extends upward to an altitude of 3,000 feet. The average yearly temperature ranges from 77° F. to 88° F., sometimes rising to as much as 105° F. The winter climate (December to February) is comparable to early May days in central U.S.A., while in summer a cool land breeze blows seaward in the morning and returns at nightfall.

FOOD AND DRINK . . .

The finest food for every mood is available in Mexico City, which has some of the best restaurants on the continent. These are restaurants that specialize in native foods and those which specialize in thick steaks, hamburgers and American coffee. Be sure to try the superb local coffee, hot chocolate and rolls of which there are an enormous variety, as well as flan, the typical custard dessert served with vanilla sauce. Tropical fruits and vegetables, as papaya, mango, avocado pears, and chayote are particularly delicious and appeal to American tastes. Good drinking water is supplied almost everywhere; it may be supplemented by bottled mineral waters, excellent Mexican beer or soft drinks. Good native wines are abundant and are inexpensive.

HEALTH PRECAUTIONS . . .

Just remember, in going from sea level to the high altitude in Mexico City (7,349 ft.) to take it a bit easy the first two or three days and perhaps adopt the Mexican custom of a heavy mid-day meal and a light supper.

TIPPING . . .

Don't undertip, but don't overtip except for service beyond the call of duty. At the airport or railroad station, give the porter one peso per bag. Hotel bellboys might be given one peso per bag, and chambermaids one peso per day. Ten to fifteen percent is an adequate tip for a waiter, the equivalent of 2 pesos at breakfast, 3 pesos at luncheon and 4 pesos at dinner. Pay taxi drivers what the meter reads. A courier who meets you at the airport or station deserves 5 pesos, and a driver-guide for two people, 15-25 pesos per day, according to services performed.

BOOKS ABOUT MEXICO . . .

Guide books . . .

TERRY'S GUIDE TO MEXICO. New and revised edition.
GUIDE TO ALL MEXICO. John Wilhelm
NEW GUIDE TO MEXICO. Frances Toor
MEXICO REVISITED. Erna Ferguson
RAND McNALLY GUIDE TO MEXICO. Herman and
Juanita Liebers

General information about Mexico

THE DISCOVERY AND CONQUEST OF MEXICO. Bernal
Diaz del Castillo
THE CONQUEST OF MEXICO. W. H. Prescott
JUAREZ AND HIS MEXICO. Ralph Roeder
THE AZTECS OF MEXICO. George Vaillant
VIVA MEXICO. Charles Flandreau
LIFE IN MEXICO. Madame Calderón de la Barca
MEXICO AND THE AMERICANS. Daniel James
MEXICO SOUTH, THE ISTHMUS OF TEHUANTEPEC.
Miguel Covarrubias
MY HEART LIES SOUTH. Elizabeth Borton de Treviño

If you need books in English, on any subject, you'll find them at:
American Book Shop, Madero 25
Central de Publicaciones, Juárez 4

SAY IT IN SPANISH? . . .

which is after all, one of the few languages that is pronounced exactly as it is written. Accent the last syllable, if the word ends in a consonant, and the next-to-last syllable, if it ends in a vowel (exceptions are noted by an accent mark). Use, if you like, DIMSA's Spanish-English, English-Spanish vest pocket dictionary, or Frances Toor's "Easy Spanish": but don't be diffident. Here are a few useful words and phrases.

Numbers . . .

1—Uno	6—Seis
2—Dos	7—Siete
3—Tres	8—Ocho
4—Cuatro	9—Nueve
5—Cinco	10—Diez

Days . . .

Sunday —Domingo	Thursday—Jueves
Monday —Lunes	Friday —Viernes
Tuesday —Martes	Saturday —Sábado
Wednesday—Miércoles	

Months . . .

January —Enero	July —Julio
February—Febrero	August —Agosto
March —Marzo	September—Septiembre
April —Abril	October —Octubre
May —Mayo	November —Noviembre
June —Junio	December—Diciembre

At the Station . . .

I wish to buy a ticket to . . . Quiero comprar un boleto a.
Where is my baggage? . . . Donde está mi equipaje?
I wish a lower (upper) berth . . . Quiero una cama baja (alta).
A roomette . . . Un camarín.
A bedroom . . . Una alcoba.
A bedroom suite . . . Alcobas comunicadas.
A compartment . . . Un compartimiento.
A drawing room . . . Un gabinete.
When does the train leave (arrive)? . . . A qué hora sale (llega) el tren?
Please call a taxi . . . Favor de llamar un taxi.
One-way ticket . . . Boleto de viaje sencillo.
Round trip . . . Viaje de ida y vuelta.
Dining car . . . Comedor.
Lounge car . . . Carro salón.

In the Market . . .

How much is it? . . . Cuánto vale? Something better . . . Algo mejor.
Too much . . . Es mucho. How much do I owe you? . . .
Something cheaper . . . Cuanto le debo?
Algo más barato. Do you have change? . . . Tiene
usted cambio?

Spoon Cuchara	Knife . . . Cuchillo
Plate Plato	Waiter Mesero
Water Agua	Glass Vaso
Fork Tenedor	Napkin Servilleta
Chair Silla	

At the Hotel . . .

I wish a single room with (without) bath . . . Quiero un cuarto solo
con (sin) baño.
I wish my bill, please . . . Quiero mi cuenta, por favor.
We wish a double room . . . Queremos un cuarto con dos camas.

Useful Expressions . . .

Good morning (afternoon) (evening) . . . Buenos días, Buenas
tardes (noches).
At what time is breakfast (luncheon) (supper)? . . . A que hora es
el desayuno (la comida) (la cena)?
How are you? . . . Como está usted?
Very well, thank you . . . Muy bien gracias.

Many thanks . . . Mil gracias.
 Pardon me . . . Perdóneme.
 I don't know . . . No sé.
 See you later . . . Hasta luego.
 Goodbye . . . Adiós
 Let's go . . . Vámonos. (It also means "All aboard!")
 Very good (bad) . . . Muy bueno (malo).
 Where can I change my money? . . . Dónde puedo cambiar mi dinero?
 What is your (its) name? . . . Como se llama?
 Where can I buy a ticket to . . . ? Dónde puedo comprar un boleto a . . . ?
 Wait here, please . . . Espere aquí, por favor.
 At what time? . . . A qué hora?
 I cannot . . . No puedo.
 Earlier . . . Más temprano. Later . . . Mas tarde.
 Now . . . Ahora.
 Today . . . Hoy. Tomorrow . . . Mañana. This week . . . Esta semana.
 Yesterday . . . Ayer. Next week . . . La semana próxima.
 My name is . . . Me llamo.
 All right . . . Está bien.
 I come from . . . Vengo de.

YOU'LL WANT TO BUY

The main shopping centers of Mexico City are Avenida Juárez and Avenida Madero; and the area surrounding the El Presidente, Monte Cassino and Geneve hotels.

For fabrics, try Cervantes, Juárez 18; Jacqmar, Madero 17; Casa Rodriguez, Génova 4, Maya de Mexico, Madero 29; Lila Bath, Niza 34; Jim Tillett, Niza 39; Mexico Lindo, Dolores 10.

For leather goods, PRADO BAGS, Revillagigedo 2, Gaby, Amberes 58-A; Arte Mexicano, Amado Nervo 82; Estilo Elegante, 5 de Mayo 17; Maison Albert, Madero 16; Talabartería Reforma, Juárez 48; Silver Jewelry at Milton, Juárez 48; Museum of Popular Arts, Juárez 44; Sanborn's, Madero 4; Platería Ortega 5 del Mayo 13.

Department Stores: Palacio de Hierro, Durango y Salamanca and at 20 de Noviembre #3; Puerto de Liverpool, 20 de Noviembre y Venustiano Carranza; Sears Roebuck, San Luis Potosí #214; Woolworth's, Reforma 99 and Insurgentes Sur 376.

Antiques: Guillermo Fernández, Avenida Insurgentes Sur 76-A.

MARKETS . . .

Any or all of THREE of the city's multitude of teeming MARKETS are worth seeing. SAN JUAN MARKET contains a novel basket market, as well as fruit, flower, meat and fish markets. The LA MERCED MARKET, recently rebuilt, probably is the world's biggest market under one roof—a square half mile or more of muted Mexican noise and color, complete with snack bars and strolling musicians. The LAGUNILLA MARKET, where you can bargain for everything from worn door knobs and odd shoes to precision tools, recently has been moved indoors, into four modern, adjoining buildings. Sunday morning is the best time to see it.

Travel to Mexico by the National Railways of Mexico which is the most economical and dependable way

The best advice is to buy round-trip tickets well in advance. (At your local ticket office or nearest National Railways' agency you can obtain up-to-date train schedules, passenger rates and informative travel literature). Especially it is important to secure Pullman space early all the way to Mexican point of destination. Pullman accommodations for the return journey should be procured as soon as the traveler reaches Mexico. (Unless you have been protected in advance).

Reduced fares Family Plan. Family plan tickets to El Paso, Texas, opposite Ciudad Juárez or Laredo, Texas can be combined with fares from those points to destinations in Mexico with considerable saving in through price.

Suggested side-trips from San Antonio to Mexico City. Now as low for the round-trip as \$30.35 coach or \$33.15 first-class via Laredo both ways, or \$30.28 first-class one-way via Laredo with return to Ciudad Juárez (opposite El Paso) or vice-versa. Double bedroom from San Antonio to Mexico City, one way \$30.14. Roomette, one-way \$18.17.

First-class passenger rates and Pullman fares are surprisingly low. From Laredo, Tex. to Mexico City (803 miles) first-class rate is \$10.10, lower pullman berth \$7.20; upper \$6.04. From Nuevo Laredo, rail fare \$8.36. Lower berth \$5.80; upper \$4.64.

From Ciudad Juárez, opposite El Paso, Tex. (1225 miles) first-class rate is \$13.01, single roomette in pullman, \$11.78; double bedroom \$16.82.

Round-trip rates are twice as much.

Hotel reservations. They should be made well in advance, particularly in Mexico City, Acapulco and the more popular resorts. If you find yourself without accommodations in Mexico City, apply at the bureau of the Mexican Hotel Association located for your convenience at Buenavista Grand Central Station where you will arrive. Tel. 47-3301.

Additional information. For any additional information while in Mexico City, you are invited to call on our Passenger Traffic Office (phones 47-89-71 or 47-90-60, extension 8235), on our Information Bureau, also at Buenavista Grand Central Station (phones 47-1084 or 47-1097), or at any of our local city ticket offices, where you happen to be. Here are listed some for ready reference:

Chihuahua, Chih., Calle Tercera No. 206, phone 2-3319.

Guadalajara, Jal., Colon Ave. and P. Sanchez St. phone 3-6287. Information Bureau Tel. 4-2618.

Guanajuato, Gto., Hotel San Diego, Jardín Union, phones 585 and 586.

Jalapa, Ver., Hotel Salmenes, phones 2125 and 3534.

Leon, Gto., Nuevo Hotel Condesa, Portal Bravo 14, phone 3-1120.

Mexico City, 5 de Mayo and Bolívar St., phones 21-05-46, 13-57-18 and 12-37-32. (Open daily from 9 A.M. to 1 P.M. and from 3.30 P.M. to 5 P.M. Saturdays from 9 A.M. to 1 P.M. Sundays and holidays closed)

Monterrey, N.L., Gran Hotel Ancira, phone 3-3295.

Oaxaca, Oax., Hotel Marques del Valle, phone 3300.

Torreón, Coah., Hotel Elvira, Morelos and V. Carrillo Sts., phone 2-6422.

Veracruz, Ver., Hotel Diligencias, phones 2531 and 2037.

NATIONAL RAILWAYS of MEXICO

(CONDENSED SCHEDULES)

ST. LOUIS—MEXICO CITY

Missouri Pacific Lines—National Railways

The Texas Eagle and Aztec Eagle

Daily Example Read down			TABLE A		Daily Example Read up		
No. 72 El Regiomontano	No. 4	MoPac-1 NRYsofM-2			NRysofM-1 MoPac-2	No. 3	No. 71 El Regiomontano
No through connections	No through connections	PM 5.30 Su 12.20 Mo 3.40 Mo 3.50 Mo 11.32 Mo 1.20 Mo 1.45 Mo 5.20 Mo	Lv. St. Louis (CST) (MoPac) Ar		AM 8.30 Tu 2.05 Tu 11.25 Mo 9.30 Mo 3.44 Mo 2.15 Mo 1.35 Mo 9.05 Mo	No through connections	No through connections
PM	AM	#6.15 Mo	Lv. N. Laredo (NRysofM) Ar		8.00 Mo	11.20 Mo	AM
4.00 Su	8.48 Su	10.23 Su	Ar. Monterrey Lv		3.50 Mo	6.30 Mo	
6.00 Su	9.10 Su	10.55 Mo	Lv. Monterrey Ar		3.25 Mo	6.10 Mo	9.00 Mo
7.34 Su	12.05 Su	1.25 Tu	Ar. Sattilo Lv		1.35 Mo	3.57 Mo	7.26 Mo
7.44 Su	12.25 Su	1.50 Tu	Lv. Sattilo Ar		1.15 Mo	3.37 Mo	7.16 Mo
1.08 Mo	8.35 Su	9.07 Tu	Ar. San Luis Potosi Lv		6.31 Su	7.25 Mo	1.52 Mo
1.18 Mo	8.58 Su	9.30 Tu	Lv. San Luis Potosi Ar		6.06 Su	6.55 Mo	1.44 Mo
12.46 Mo	1.11 Tu		Lv. San Miguel Allende Lv		2.36 Su	3.03 Mo	
5.07 Mo	2.38 Mo	2.57 Tu	Ar. Queretaro Ar		12.57 Su	1.09 Mo	10.02 Su
5.07 Mo	2.48 Mo	2.57 Tu	Lv. Queretaro Ar		12.53 Su	12.59 Mo	10.02 Su
9.05 Mo	8.42 Mo	8.10 Tu	Ar. Mexico City (CST) Lv		8.10 Su	7.00 Su	6.00 Su
AM	AM	PM			AM	PM	PM

Train No. 2 is held at Nuevo Laredo until 7.45 P.M. if necessary, to allow for border inspections.

AZTEC EAGLE

No. 1—Northbound No. 2—Southbound

Sleeping cars

Mexico City and St. Louis (10 Roomettes, 6 double bedrooms)
Mexico City and Nuevo Laredo (14-Sec.)

Observation lounge car (Beverages)

Mexico City and Nuevo Laredo.

Dining car

Mexico City and Nuevo Laredo.

Coaches

Mexico City and Nuevo Laredo (unreserved seats).

EL REGIOMONTANO

(All-Pullman—No coaches)

No. 71—Northbound No. 72—Southbound

Sleeping cars

Mexico City and Monterrey
(Sections, roomettes, double bedrooms, compartments, and drawing-rooms)

Dining car

Mexico City and Monterrey

Observation lounge car

Mexico City and Monterrey (Beverages)

No. 3—Northbound No. 4—Southbound

Coaches only

Mexico City and Nuevo Laredo (Unreserved seats).

SAN FRANCISCO—LOS ANGELES—MEXICO CITY

Southern Pacific Lines—National Railways of Mexico

Daily Example Read down	TABLE D		Daily Example Read up
Sunset NRYsofM No. 8			NRysofM No. 7 Sunset
AM			PM
8.25 Su	Lv. San Francisco (PT) (SoPac) Ar		7.00 We
6.15 Su	Ar. Los Angeles Lv		9.15 We
8.30 Su	Lv. Los Angeles Ar		8.15 We
3.40 Mo	Lv. Yuma (MT) Ar		2.10 We
7.15 Mo	Lv. Phoenix Ar		12.05 We
10.00 Mo	Lv. Tucson Ar		9.05 Tu
5.00 Mo	Ar. El Paso (MT) (SoPac) (See note) Lv		2.50 Tu
7.00 Mo	Lv. Ciudad Juárez (CST) (NRysofM) (See note) Ar		5.15 Tu
11.40 Mo	Lv. Chihuahua Ar		12.30 Tu
12.10 Tu	Lv. Chihuahua Ar		12.00 Tu
8.00 Tu	Ar. Torreón Lv		5.25 Mo
8.30 Tu	Lv. Torreón Ar		5.05 Mo
6.10 Tu	Ar. Aguascalientes Lv		8.10 Mo
6.40 Tu	Lv. Aguascalientes Ar		7.40 Mo
10.05 Tu	Lv. León Ar		4.35 Mo
11.00 Tu	Lv. Irapuato Ar		3.20 Mo
11.30 Tu	Lv. Irapuato Ar		2.50 Mo
1.40 We	Lv. Queretaro Ar		12.59 Mo
6.55 We	Ar. Mexico City (CST) Lv		7.50 Su
AM			PM

Light figures indicate A. M.

FOR EXPLANATION OF SIGNS SEE PAGE 20

Black figures indicate P. M.

NEW YORK—WASHINGTON—ST. LOUIS—MEXICO CITY

Via Pennsylvania RR, New York Central or Baltimore & Ohio to and from St. Louis and EAGLE ROUTE to and from Laredo and Mexico City

Daily Example Read down			TABLE B		Daily Example Read up			
Days	B&O-1 (Camden Station)	NYC-15- (Grand Central)	PRR-3 (Penna Station)		PRR-4 (Penna Station)	NYC-312- (Grand Central)	B&O-2 (Camden Station)	Days
Su		PM (EST) 2.00	PM (EST) 6.50		AM (EST) 8.15	AM (EST) 11.25		We
Su		4.45				7.15		We
Su	PM (EST)		8.17		6.25		AM (EST)	We
Su	3.40		7.40		8.10		10.10	We
Su	4.40		6.45		9.15		8.00	We
Su			10.20		4.29			We
Mo	8.15						5.55	Tu
Mo			3.57		11.23			Tu
Mo			8.00		6.55			Tu
Su		11.20						We
Mo		3.44					2.18	We
Mo			9.35				9.45	Tu
Mo		9.39	11.50		5.25		3.30	Tu
Mo	2.10	1.35	3.15		3.20	10.00	9.30	Tu
Mo		5.30					8.30	Tu
Tu		1.45					2.15	Tu
We		8.10					8.10	Su
		PM					AM	

SLEEPING CARS—New York and St. Louis: On PRR trains 344 (Penn Texas), on NYC trains 15 (Ohio State Knickerbocker) and 312 (Southwestern) **St. Louis and Mexico City:** On MoPac trains 1&2 (Texas Eagle) St. Louis-San Antonio and Aztec Eagle, San Antonio-Mexico City. **SLUMBER COACHES—** Washington and St. Louis on B&O trains 1&2 (National Ltd.). **RECLINING SEAT COACHES—Unreserved seats** on PRR trains 344 St. Louis-New York and on NYC train 15 New York to St. Louis. **Reserved seats** St. Louis to San Antonio. **COACHES—** On train 312 St. Louis to New York.

For train service between St. Louis and Mexico City, see tables A and 1.

CHICAGO—ST. LOUIS—MEXICO CITY

Daily Example Read down			TABLE C		Daily Example Read up			
Days	Ill. Cent. 21 Diamond	GM&O-1 Limited	N&W 111-1 Banner Blue		N&W 4-124 Blue Bird	GM&O-2 Abraham Lincoln	Ill. Cent. 22 Diamond	Days
Su	(Central Station) AM 8.00	(Union Station) AM 11.15	(Dearb Station) AM 10.55		(Dearb Station) PM 9.10	(Union Station) PM 8.58	(Central Station) PM 8.15	Tu
Su	1.40	4.43	4.45		2.50	2.08	2.40	Tu
Su		5.30						Tu
Tu		8.10					8.30	Tu
Tu		PM					8.10	Su
		PM					AM	

Reclining seat coaches and dining-car service between Chicago and St. Louis.

Sleeping cars: St. Louis—Mexico City (10 Roomettes, 6 double bedrooms).

For train service between St. Louis and Mexico City, see tables A and 1.

TABLE D (Cont'd.)

No. 7 (Northbound) No. 8 (Southbound)

Sleeping Cars

Mexico City and Ciudad Juárez (10 roomettes, 6 double bedrooms)

Mexico City and Chihuahua (10 roomettes, 6 double bedrooms)

Mexico City and Aguascalientes (6 sections, 6 roomettes, 4 double bedrooms)

Mexico City and León (16 roomettes, 1 compartment, 3 double bedrooms). Occupancy at León, northbound, until 7:30 A.M. southbound, 9:30 P.M.

Dining car—Mexico City and Ciudad Juárez.

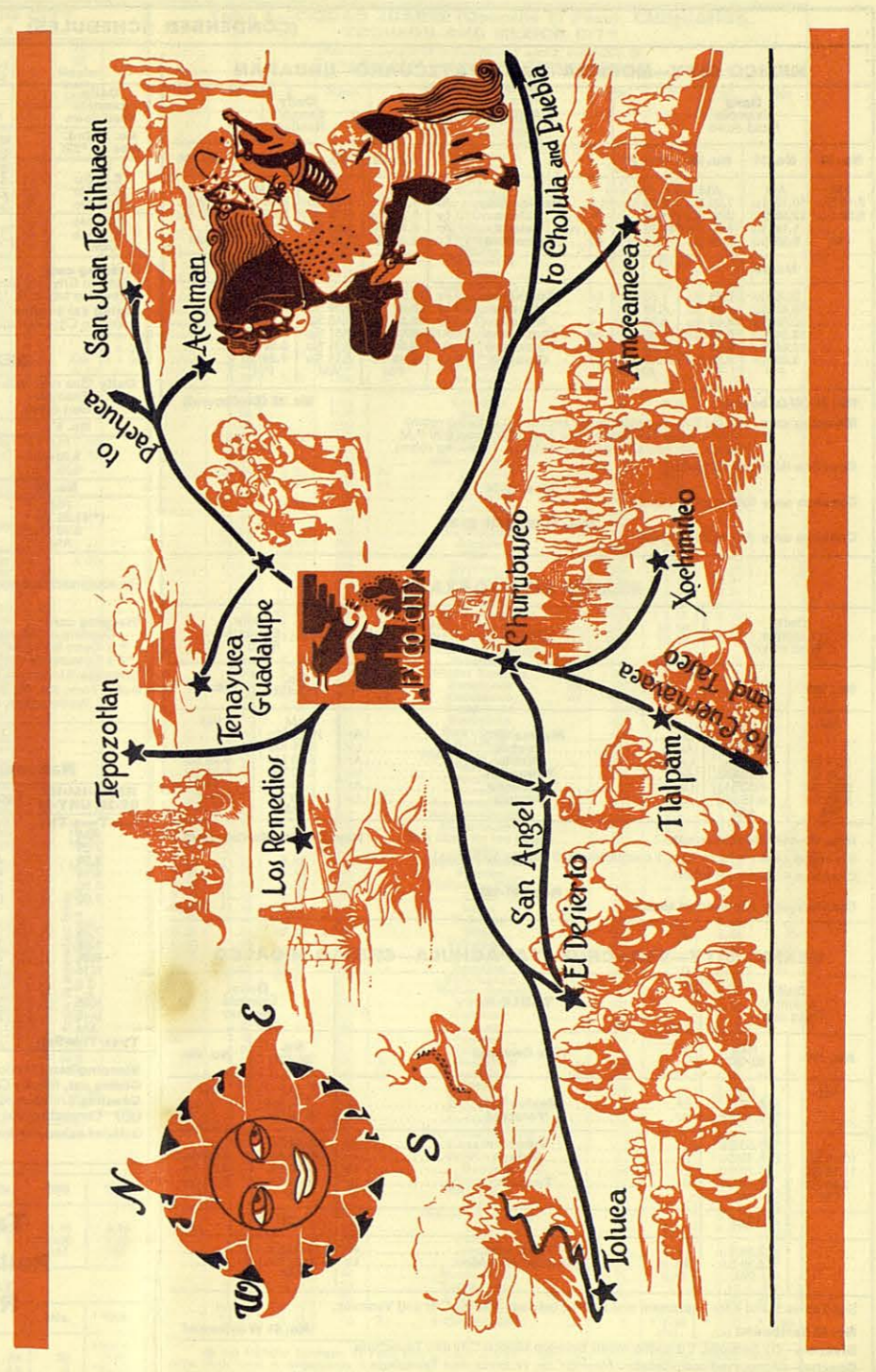
Observation lounge car (Beverages)—Mexico City and Ciudad Juárez.

Coaches

Mexico City and Ciudad Juárez (Unreserved seats)

Note: No transfer between El Paso and Ciudad Juárez. Passengers holding through tickets should make their own arrangements for crossing the border. NRysofM foreign agent, Mr. A. Barraza S., at passenger station in Ciudad Juárez will assist. (Tel. 2-3567)

○ Pullman occupancy until 7:15 a.m.



(CONDENSED SCHEDULES)

MEXICO CITY—MORELIA—LAKE PATZCUARO—URUAPAN

Table with columns for Daily Example Read down, TABLE I, and Daily Example Read up. Includes train numbers No. 33, 31, 29, 27, 28, 30, 32, 34, 35, 36 and destinations like Mexico City, Toluca, Acámbaro, Morelia, Patzcuaro, Uruapan.

No. 27 (Westbound)

Sleeping cars Mexico City and Morelia (12 sections, 1 drawing room) Occupancy at Morelia until 7:30 A.M. Open 9:30 P.M. Mexico City and Uruapan (12 sections, 1 drawing room)

Coaches (Unreserved seats)

Nos. 29-30

Coaches only (Unreserved seats)

Nos. 31-32, 33-34, 35-36

Coaches only (Unreserved seats)

MEXICO CITY—OAXACA

Table with columns for Daily Example Read down, TABLE J, and Daily Example Read up. Includes train numbers No. 108, 111-114, 113-112, 107 and destinations like Mexico City, Puebla, Tehuacan, Oaxaca.

Nos. 111-114 (Southbound)

Sleeping cars (16 roomettes, 1 compartment, 3 double bedrooms)

Coaches (Unreserved seats)

Nos. 107-108

Coaches only (Unreserved seats)

Nos. 113-112 (Northbound)

MEXICO CITY—VERACRUZ—TAPACHULA—CIUDAD HIDALGO

Table with columns for Daily Example Read down, TABLE K, and Daily Example Read up. Includes train numbers No. 170, 53-102, 54-101, 169 and destinations like Mexico City, Veracruz, Veracruz, Arriaga, Tonalá, Tapachula, Ciudad Hidalgo.

See Tables E and F for equipment and service between Mexico City and Veracruz.

No. 53 Eastbound

Sleepers—(12 Sections, 1 drawing room) between Mexico City and Tapachula

Coaches—Unreserved seats between Mexico City, Veracruz, and Tapachula

Connections at Ciudad Tecun Uman (opposite Ciudad Hidalgo) for points in Guatemala on the International Railways of Central America.

No. 54 Westbound

MEXICO CITY—GUANAJUATO

Table with columns for Daily Example Read down, TABLE L (See Table G for equipment of trains 5 and 6), and Daily Example Read up. Includes train numbers No. 5 (2nd Sec.)-#281 and destinations like Mexico City, Queretaro, Irapuato, Guanajuato.

Sleeping cars

Mexico City and Guanajuato (16 roomettes, 1 compartment, 3 double bedrooms) See also tables G, 15 and 12.

Dining car service

Mexico City-Guanajuato.—On trains 5 and 6—"El Tapatio"—between Mexico City and Irapuato.

MEXICO CITY—GUADALAJARA—MANZANILLO

Table with columns for Daily (See note below) Example Read down, TABLE M, and Daily (See note below) Example Read up. Includes train numbers No. 5, 94, 6, 93 and destinations like Mexico City, Guadalajara, Manzanillo.

Nos. 5-6 (El Tapatio)—All-Pullman

For equipment between Mexico City and Guadalajara see table G.

Nos. 93-94

Sleeping cars

Guadalajara-Manzanillo (8 Sections 3 compartments)

(*) Open 9:30 P.M.

(**) Occupancy until 7:30 A.M.

Coaches (Unreserved seats)

Note: Train No. 94, Tuesdays, Thursdays and Saturdays from Guadalajara to Manzanillo. Train No. 93 Wednesdays, Fridays and Sundays from Manzanillo to Guadalajara.

MEXICO CITY—MERIDA

National Railways—Southeastern R.R.—U. Rys. of Yucatán

Table with columns for train numbers (e.g., NM-51-164-167, SE-29, URY-18), Kms., TABLE N, Mls., and destinations like Mexico City, Veracruz, Medias Aguas, Coatzacoalcos, Teapa, Palenque, Campeche, Mérida.

Sleeping cars, Mexico City and Mérida, 8 Sections, 5 double bedrooms.

Dining car, Mexico City and Mérida

Coaches (Unreserved seats) Mexico City and Mérida

(Z) Connecting bus service to and from Villahermosa, Tab.

Detailed schedules between Mexico City, Veracruz, and Coatzacoalcos, on tables 25, 30, and 31.

Take this opportunity and travel in Pullman to MERIDA, visiting the Maya Ruins of Chichen Itzá, Uxmal, and Palenque

Table 1.—ST. LOUIS, SAN ANTONIO AND MEXICO CITY
(For equipment of trains Nos. 1-2, 3-4, and 71-72, see table A)

138		72 El Regio- montano	8	MP-1 NM-2	Kms.	Texas Eagle St. Louis—San Antonio Aztec Eagle San Antonio—Mexico City	Mls.	NM-1 MP-2	3	71 El Regio- montano	137
						(Central Time) St. Louis (MP) Ar		AM 8.30			
						Texas Eagle		11.20			
						San Antonio Lv		2.15			
						San Antonio Ar		1.35			
						Laredo Lv		*9.05			
						(NrysofM) Lv. Nuevo Laredo Ar		NM-1 8.00			PM 12.30
						Jarita		6.10			11.57
						Camaron		7.07			11.26
						Amahuac		6.57			11.22
						Rodriguez		6.53			11.07
						Lampazos		6.18			9.25
						Candela		7.18			10.04
						Golondrinas		7.10			9.50
						Elmontante		5.28			9.28
						Villaloma		5.23			9.21
						Alamo		6.86			8.03
						Morales		6.61			7.19
						Salinas Victoria		6.55			7.07
						Ar. Monterrey Lv		3.50		AM 9.00	*7.30
						Monterrey Lv		3.25		6.10	9.00
						Leona		6.29		5.58	
						Galicia		6.15		5.32	
						Rionada		6.00		5.03	
						Higuera		5.91		4.42	
						Ramos Arizpe		5.78		1.50	4.18
						Ar. Saltillo Lv		5.70		1.35	3.57
						Saltillo Lv		5.70		1.15	3.09
						Encantada		5.59		6.30	7.16
						Higuera		5.51		2.52	
						Agua Nueva		5.45		12.30	2.38
						Carneros		5.26		1.54	
						Gomez Farias		5.01		1.08	
						Ventura		4.93		10.53	12.55
						San Salvador		4.78		12.31	
						El Salado		4.48		9.50	11.45
						Ar. Vanegas Lv		4.48		9.46	11.26
						Vanegas Ar		4.34		19.20	11.02
						Encantada		4.29		9.12	10.51
						Wadley		4.20			
						(Tropic of Cancer)		4.03		8.34	10.03
						Laguna Seca		3.92		8.18	9.46
						Charcas		3.82		7.59	9.19
						Venado		3.70		7.39	8.51
						Moctezuma		3.52		7.14	8.19
						Bocas		3.27		6.31	7.25
						Ar. San Luis Potosi Lv		3.27		6.06	6.55
						San Luis Potosi Ar		3.08		5.28	6.14
						Jesus Maria		3.01		5.19	6.02
						Villa Reyes		2.91		5.02	5.42
						Jaral de Berrio		2.83		4.49	4.28
						Chimimoya		2.74		4.28	5.05
						San Felipe		2.62		4.07	4.41
						Obregon		2.44		3.33	4.03
						Rio Laja		2.40		3.24	3.54
						Dolores Hidalgo		2.32		3.05	3.35
						Tequisquiapan		2.24		2.50	3.19
						Atotonilco		2.17		2.36	3.03
						+ San Miguel Allende		1.99		2.03	2.24
						Comonfort		1.95		1.55	2.15
						Ar. Escobedo Lv		1.95		1.35	1.55
						Escobedo Ar		1.78		1.28	1.28
						Mariscal		1.67		1.09	1.54
						+ Queretaro		1.65		11.2	10.2
						Hercules		1.57		12.54	
						La Griega		1.49		12.28	
						Noria		1.33		12.01	
						San Nicolas		1.27		11.57	
						Bernal		1.19		10.47	
						Huichapan		1.11		10.17	
						Nopala		1.08		10.49	
						Aragon		1.04		10.99	
						Sayula		1.06		9.31	
						Carrasco		0.98		8.55	
						Teocalco		0.92		8.30	
						Calera		0.88		8.25	
						Vito		0.84		8.19	
						Apaxco		0.82		8.13	
						Huehuetoca		0.79		8.05	
						Teoyucan		0.72		7.52	
						Cuautlan		0.67		7.42	
						Lecheria		0.61		7.35	
						Mexico City Lv		0.58		7.26	
						Ar. Mexico City Lv		0.50		7.00	
								8.10		AM	PM
								8.10		PM	PM

& Train No. 2 is held at Nuevo Laredo until 7:45 PM, if necessary, to allow for border inspections.

Table 1a.—VANEGAS-MATEHUALA

*247	*245	Kms.	Mls.	*246	*248
PM *4.45	AM *11.50	0	Lv. Vanegas Ar	29	11.15
6.00	1.05	47	Ar. Matehuala Lv	0	*10.00
PM	PM				4.10
					*2.55
					PM

Table 1b.—RIO LAJA-SAN LUIS DE LA PAZ

*249	Kms.	Mls.	*250
AM *6.20	0	Lv. Rio Laja Ar	32
8.00	51	Ar. San Luis de La Paz Lv	0
AM			Noon 12.00
			*10.30
			AM

Light figures indicate A. M.

FOR EXPLANATION OF SIGNS SEE PAGE 20

Table 3.—CIUDAD JUAREZ (Opposite El Paso), CHIHUAHUA, TORREON AND MEXICO CITY

(For equipment of trains Nos. 7 and 8, see table D)
Trains Nos. 13-14, coaches only. (Unreservé seats)

*286	14	8	Kms.	EL FRONTERIZO (Trains Nos. 7 and 8)	Mls.	7	13	*285
				(Union Station) El Paso, Tex. (MT) Ciudad Juarez (CT) Ar	1225	▲ 5.15		
				Samalayuca	1196	4.29		
				Ahumada	1144	3.27		
				Moctezuma	1114	2.52		
				Gallego	1086	2.18		
				Ojo Laguna	1061	1.81		
				Ar. Chihuahua Lv	1002	12.30	PM	
				Chihuahua Ar	1002	12.00	5.25	
				Tabalopa	999		5.15	
				Morse	996		5.07	
				Horcasitas	974	11.23	4.33	
				Meoqui	945		3.42	
				Las Delicias	940	10.34	3.32	
				Sauclillo	925		2.58	
				Concho	920		2.51	
				La Cruz	908		3.32	
				Santa Rosalia Camargo	896	9.41	2.18	
				Diaz	876		1.37	
				Jimenez	853	8.45	1.05	
				Corralitos	831		12.18	
				Escalon	807	f 7.30	11.36	
				Zavalza	798		11.18	
				Ceballos	786	7.06	11.01	
				Yermo	774		10.41	
				Conejos	761		10.16	
				Bermejillo	731	f 6.02	9.32	
				Nea	719		8.11	
				Gomez Palacio	708	5.33	8.54	
				Ar. Torreon Lv	705	5.25	8.37	
				Torreón Ar	705	5.05	8.07	
				Nazareno	696		7.38	
				Jimulco	661	f 4.08	6.58	
				El Centinela	644		6.30	
				La Mancha	624		6.00	
				Acacio	620	f 3.16	5.52	
				Rivas	615		5.43	
				Symon	609	f 3.01	5.34	
				Camacho	580	f 2.26	4.54	
				Opal	567	f 2.08	4.31	
				La Griega	543	f 1.39	3.58	
				La Colorado	528		3.34	
				Ar. Felipe Pescador Lv	505	12.50	3.00	
				Felipe Pescador Ar	505	12.30	2.35	
				(Tropic of Cancer)	493			
				Fresnillo	474	11.46	1.44	
				Victor Rosales	456	11.16	1.08	
				Zacatecas Ar	437	10.38	12.25	
				Zacatecas Lv	437	10.31	12.15	
				Guadalupe	431	10.12	11.58	
				Gerónimo	425		11.43	
				Berriozabal	409		11.07	
				Adames	400	9.10	10.52	
				Rincón de Romos	387		10.30	
				Pabellón	382	8.42	10.12	
				Garabato	377		10.12	
				Chicalote	372		10.02	
				Ar. Aguascalientes Lv	362	8.10	9.45	
				Aguascalientes Ar	362	7.40	9.15	

Table 2.—NUEVO LAREDO, MONTERREY AND TAMPICO

No. 138	No. 2-172	Kms.		Mis.	No. 171-137	No. 1
PM *2.10 7.25	PM *6.15 10.23	0 268	Lv. Nuevo Laredo Ar Ar. + Monterrey Lv	167 0	PM 12.30 *7.30	AM 8.00 *3.50
.....	*8.00 9.54 10.59 1.50 3.48 7.50 PM	0 98 148 285 379 520	Lv. Monterrey Ar Montemorelos Linares Ciudad Victoria Calle Ar. Tampico Lv	323 262 231 146 88 0	6.30 4.35 3.43 1.00 10.54 *7.00 AM

Table 2a.—CALLES—EL MANTE

*384	*382	Kms.		Mis.	*381	*383
PM *4.05 4.51 5.55 PM	AM *10.55 11.41 12.44 PM	0 21 51	Lv. Calles Ar Xicotencati Ar. El Mante Lv	32 19 0	AM 10.12 9.23 *8.15 AM	PM 3.33 2.49 *1.44 PM

Table 4.—MATAMOROS (Opposite Brownville), MONTERREY AND MEXICO CITY

144	140	Kms.		Mis.	139	143	
PM *6.30 8.59 10.30 11.35 2.50 AM	AM *8.00 10.28 11.55 1.18 4.40 PM	333 247 183 135 0	Lv. Matamoros Ar Reynosa Lv Camargo Lv Aldamas Lv Ar. + Monterrey Lv	207 154 114 84 0	PM 4.45 2.18 12.43 11.37 12.53 *8.00 AM	AM 6.00 3.31 1.59 12.53 *9.40 PM	
4	No. 2	No. 72 Regio-montano		No. 71 Regio-montano	No. 1	3	
*9.10 8.55 8.42 AM	*10.55 9.30 8.10 PM	*6.00 1.18 9.05 AM	1022 527 0	Lv. + Monterrey Ar + San Luis Potosi Lv Ar. + Mexico City Lv	635 327 0	9.00 1.52 *6.00 PM	3.25 6.31 *8.10 AM

Coaches between Matamoros and Monterrey. (Unreserved seats)
See table A for description of equipment of trains Nos. 1 and 2 (Aztec Eagle); Nos. 3 and 4; and Nos. 71-72 El Regiomontano between Monterrey and Mexico City, and table 1 for detailed schedules.

Table 5.—PIEDRAS NEGRAS, (Opposite Eagle Pass, Tex.) AND MEXICO CITY

4	174	Km.		Mis.	173	3	
.....	AM *8.25 9.42 11.01 11.16 11.45 11.55 1.40 2.00 4.38 4.48 6.25 6.50 PM	0 52 117 117 143 143 238 367 367 424 439	Lv. Piedras Negras Ar Allende Ar. Sabinas Lv Sabinas Ar Barroteran Ar Barroteran Ar Ciudad Frontera Lv Ciudad Frontera Ar Paredon Lv Paredon Ar Ramos Arizpe Lv Ar. + Saltillo Lv	273 241 200 200 184 184 125 125 45 45 10 0	PM 6.20 5.16 3.51 3.37 3.10 3.00 1.17 12.57 10.10 9.53 8.42 *8.20 PM PM	
2	No. 72 Regio-montano			No. 71 Regio-montano	1		
*12.25 8.55 1.55 2.54 8.42 AM	*1.50 9.30 2.15 2.57 8.10 AM	*7.44 1.18 4.35 5.07 9.05 AM	917 527 314 269 0	Lv. + Saltillo Ar + San Luis Potosi Lv Escobedo + Queretaro Lv Ar. + Mexico City Lv	570 327 196 167 0	7.16 1.52 10.45 10.02 *6.00 PM	1.15 7.25 1.55 2.15 *1.09 *7.00 AM

Pullman sleeping car service between Saltillo and Mexico City on trains 1-2 and El Regiomontano. See table A for consist of trains 1 and 2-Aztec Eagle-between Laredo and Mexico City, and El Regiomontano between Monterrey and Mexico City also table 1 for detailed schedules.

Table 5a.—ALLENDE AND CIUDAD ACUÑA (Opposite Del Rio, Tex.)

	*395	Km.		Mis.	*396	
.....	PM 15.25 8.45 PM	0 119	Lv. Allende Ar Ar. Ciudad Acuña Lv	74 0	AM 9.15 16.01 AM

Table 6.—MONTERREY AND TORREON

(Connections at Torreón with trains Nos. 88 and 87 to and from Durango—See table 8)

*379	175-180	Km.		Mis.	179-176	*380
AM *6.45 7.41 8.01 f 9.09 10.15 11.48 12.30 PM	AM *8.10 f 8.44 f 8.52 9.51 10.28 10.47 11.16 11.47 12.04 12.50 1.02 1.19 1.28 1.35 1.52 2.05 PM	380 352 346 312 294 249 230 192 127 70 56 40 32 24 6 0	Lv. + Monterrey Ar Abasolito Hidalgo Ixtle Paredón Sauceda Hipólito Marte Madero Tulia San Pedro Concordia Abelardo Rodríguez Gregorio García El Compañ Gómez Palacio Ar. + Torreón Lv	236 219 215 194 183 150 143 119 93 79 43 35 25 20 15 4 0	PM 6.20 f 5.46 f 5.39 4.50 3.59 3.40 3.07 2.33 2.15 1.32 1.20 1.01 12.50 12.19 12.18 *12.05 PM	PM 8.05 7.10 6.57 5.54 5.20 3.27 2.50

Trains Nos. 175-180 and 176-179.—Coaches only. (Unreserved seats)

Table 7.—TORREON AND SALTILLO

*263-265 *177	Kms.		Mis.	*178-266 *264
AM *9.10 9.59 10.59 12.38 1.20 3.47 4.57 5.30 PM	0 32 72 139 148 239 284 302	Lv. + Torreón Ar Gilita Viesca Cerro Colorado Parras General Cepeda Encantada Ar. + Saltillo Lv	0 20 45 86 92 149 176 188	PM 4.45 3.58 2.58 1.18 1.05 10.18 9.00 *8.20 AM

Table 8.—TORREON, DURANGO AND TEPEHUANES

85	88	Km.		Mis.	87	86
.....	PM *2.35 4.15 5.58 7.35	0 80 165 253	Lv. + Torreón Ar Pedricña Ar Ignacio Allende Ar. Durango Lv	157 108 55 0	AM 11.30 9.54 8.23 *7.00 PM 3.25 12.37 10.06 *8.20 AM
AM *8.20 11.07 1.40 3.30 PM	PM	0 96 168 219	Lv. Durango Ar Guatimape Santiago Papasquiaro Ar. Tepehuanes Lv	136 76 32 0	AM

Table 9.—FELIPE PESCADOR AND DURANGO

17	Km.		Mis.	18
PM *1.50 2.59 4.05 4.31 5.53 6.05 6.15 6.25 6.41 7.06 7.26 8.25 PM	266 219 174 154 129 118 109 101 88 61 43 0	Lv. Felipe Pescador Ar Rio Grande Cantuna Frio Lodemena Canutillo Gualterio El Súchil Vicente Guerrero Poanas Tuitán Ar. Durango Lv	165 136 108 96 80 73 68 63 55 38 27 0	PM 1.05 12.09 11.01 10.37 9.18 9.05 8.55 8.43 8.27 7.57 7.38 *6.45 PM

Table 10.—MEXICO CITY, SAN LUIS POTOSI AND TAMPICO

1-141	3-353	Km.		Mis.	*354-4	142-2
AM *8.10 6.06 *8.45 11.24	PM *7.00 6.55 *7.50 11.15	0 527 132	Lv. + Mexico City Ar Ar. + San Luis Potosi Lv Lv. + San Luis Potosi Lv Ar. San Bartolo Lv	327 0 277 195	AM 8.42 *8.55 8.20 4.31 *3.58 *3.58 *2.30 *3.50	PM 8.10 *9.30 6.45 4.02
*11.24 12.20 12.40 2.22 2.27 3.53 4.35 6.55 AM	*11.27 12.45 1.05 2.57 3.03 4.59 6.01 6.45 PM	132 190 190 239 239 305 332 445	Lv. San Bartolo Ar Rio Verde Lv San Bartolo Ar Cardenas Lv Cardenas Ar Tamasopo Lv Tamasopo Ar Valles Lv Las Palmas Lv Ar. Tampico Lv	195 158 158 128 128 87 70 0	4.21 3.10 2.50 12.40 12.50 10.28 9.30 *8.30 AM	4.02 3.02 2.42 12.55 12.50 11.25 10.45 *8.20 PM

See table A for equipment of trains Nos. 1-2 and 3-4 between Mexico City and San Luis Potosi. Coaches only (unreserved seats) between San Luis Potosi and Tampico.

Table 11.—AGUASCALIENTES AND SAN LUIS POTOSI

	*351	Km.		Mis.	*352	
	AM	0	Lv.	140	PM	
	7.40	110	Ar.	71	4.35	
	10.47	110	Ar.	71	1.33	
	11.07	110	Lv.	0	1.13	
	2.05	225	Ar.	0	*10.00	
	PM		Ar.		AM	

Table 12.—IRAPUATO, SILAO AND GUANAJUATO

(The Mexico City-Guanajuato sleepers are operated on trains Nos. 5 and 6 between Mexico City and Irapuato—See tables "G", "L", and 15—and on trains Nos. *281 and *284 between Irapuato and Guanajuato)

	*281	*283	Km.		Mis.	*284	*282
	AM	PM	0	Lv.	34	PM	AM
	*6.30	*6.30	30	Ar.	15	10.30	10.30
	7.15	6.15		Lv.	0	9.48	9.40
				Ar.			
	7.20	6.48	30	Lv.	15	9.18	9.05
	8.05	7.33	54	Ar.	0	*8.33	*8.20
	AM	PM		Lv.		PM	AM

Table 13.—IRAPUATO, SALAMANCA AND ESCOBEDO

	*228	Km.		Mis.	*227	
	AM	0	Lv.	50	PM	
	*6.20	20	Ar.	37	3.10	
	6.46	20	Lv.	37	2.42	
	10.06	20	Lv.	37	2.42	
	10.23	34	Lv.	29	2.20	
	10.41	46	Lv.	21	1.58	
	11.00	80	Lv.	12	1.35	
	AM		Ar.	0	*12.50	
					PM	

Table 15.—MEXICO CITY, IRAPUATO, GUADALAJARA AND MANZANILLO

(For equipment between Mexico City, Guadalajara and Manzanillo, see Tables G and M)

	94	11	9	5	Km.		Mis.	6	10	12	93
	Tu	PM	AM	PM	0	Lv.	0	AM	PM	AM	We
	Th	* 5.55	* 6.58	* 8.20	80	Ar.	50	8.47	10.00	8.34	Fr
	Sa	10.34	8.43	10.00	190	Lv.	118	▲	▲	6.44	Su
		11.13	11.54	12.39	229	Ar.	142	3.55	4.57	3.15	
		11.30	11.14	1.34	245	Lv.	152	3.35	4.35	2.53	
		11.42	12.21	1.39	245	Lv.	152	3.35	4.29	2.43	
		12.45	1.20	2.30	290	Ar.	180	2.45	3.40	1.85	
		1.38	2.15	3.33	351	Ar.	206	2.45	1.04		
		1.59	2.35	3.59	351	Lv.	218	1.37	2.15	12.42	
		2.31	3.09	3.59	351	Ar.	218	1.17	1.45	12.17	
			3.35	3.75			233	1.17	1.07		
			3.44	3.84			239	1.07	1.07		
			3.52	3.90			242	12.58			
			4.09	4.01			249	12.45	11.22		
			4.23	4.16			259	12.28	10.58		
			4.32	4.23			263	12.19	10.51		
			5.03	5.23			275	11.53	10.31		
			5.18	4.56			283	11.32			
			6.00	5.57			296	11.19	9.42		
			6.27	4.98			309	10.24	9.11		
			6.45	6.24			314	10.43	10.13		
			6.00	6.49			330	10.17	9.33	8.26	
			6.19	7.45			341	9.04	8.00		
			6.42	8.10			355	8.38	7.33		
			6.52	8.19			359	f 8.28	f 7.23		
			7.01	8.28			364	8.20	f 7.15		
			7.23	8.48			375	7.58	6.56		
			7.35	9.00			378	* 8.55	* 7.45	* 6.45	
			AM	AM				AM	AM	AM	
	◆	◆		92	0	Lv.	221	91	4.45		◆
	11.25			10.10	6	Ar.	217	4.32			6.30
	11.39			10.14	6	Ar.	165	2.52			6.17
	1.08			11.52	89	Ar.	137	2.05			f 4.43
	1.53			12.49	134	Ar.	119	1.26			3.59
	2.32			1.44	163	Ar.	103	12.22			3.27
	3.04			2.19	190	Ar.	96	12.05			2.40
	3.17			2.33	200	Ar.	81	11.21			2.24
	3.55			3.12	225	Ar.	60	10.35			1.42
	4.48			4.13	259	Ar.	20	8.35			12.57
	6.10			5.39	323	Ar.	0	* 8.00			11.12
	6.48			6.16	355	Ar.		AM			◆10.37
	AM			PM				AM			PM

◆ Set out sleeper. Occupancy at Manzanillo 9.00 p.m. At Guadalajara until 7.30 a.m.
 ◆ Set out sleeper. Occupancy at Guadalajara 9.30 p.m.
 ▲ Trains Nos. 6 and 10 are operated from La Griega to Mexico City via Huichapan (See table 1)
 Trains Nos. 91 and 92—Coaches only (Unreserved seats)
 Trains Nos. 93 and 94—Sleeping cars (8 Sec. 3-Comp.)
 Coaches (Unreserved seats)

Table 14.—ACAMBARO AND ESCOBEDO

	*236	50	Km.		Mis.	49	*235
	PM	AM	0	Lv.	53	PM	AM
	*8.50	*10.30	29	Ar.	36	5.10	8.15
	8.59	11.29	71	Lv.	12	4.24	7.23
	11.07	12.14	71	Ar.	12	3.15	6.10
	11.39	12.46	71	Lv.	12	2.40	5.38
	12.10	1.15	86	Ar.	0	*2.15	*5.10
	AM	PM				PM	AM

Table 16.—MEXICO CITY, MORELIA, PATZCUARO AND URUAPAN

(For equipment see Table I)

	33	31	29	27	Km.		Mis.	28	30	32	34
	PM	AM	PM	PM	0	Lv.	0	7.45	7.55	5.40	11.25
	* 3.15	*10.10	* 7.00	* 9.30	6	Ar.	4	7.30	7.38	5.26	11.10
	3.35	10.30	7.15	9.45	0	Ar.	7				10.53
	3.42	10.37			11	Ar.	9				5.11
	3.49	10.47			15	Ar.	18				10.47
	4.21	11.20	7.59	f 10.27	29	Ar.	6	6.52	6.57	4.41	10.23
	5.06	11.58	8.29	f 10.57	42	Ar.	26	6.24	6.27	4.08	9.50
	5.37	12.29			57	Ar.	35				3.28
	5.47	12.38	f 9.03	f 11.29	63	Ar.	39	f 5.43	5.47	3.17	8.53
	6.00	12.50	9.15	11.41	74	Ar.	46	5.32	5.35	3.05	8.40
	6.15	1.10	9.25	11.56	74	Lv.	46	5.18	5.25	2.50	8.25
	6.47	1.42			99	Ar.	70				2.19
	7.09	2.05	10.16		113	Ar.	62				1.58
	7.25	2.21	f 10.31	f 12.50	125	Ar.	78	f 4.19	4.23	1.39	7.12
	7.39	2.36	10.44		135	Ar.	84				1.25
	7.49	2.47	10.53	1.09	142	Ar.	88	4.01	4.04	1.16	6.48
	8.08	3.06	f 11.10		156	Ar.	97				12.58
	8.25	3.19	11.26	1.37	165	Ar.	103	3.34	3.35	12.45	6.15
	8.35				10	Lv.	0				6.00
	9.00				10	Ar.	0				* 5.30
		3.30	f 11.26	1.37	165	Lv.	103	3.34	3.30	12.35	
		4.06	f 11.41	2.09	187	Ar.	109				12.16
		4.18	f 12.09	f 2.19	193	Ar.	120	f 2.46	f 2.45	11.44	
		4.31	f 12.22		204	Ar.	127				11.29
		4.52	f 12.44		219	Ar.	136				2.08
		5.03	12.54	3.00	227	Ar.	141	1.58	2.00	10.50	AM
	PM					Ar.					
	* 1.50				0	Ar.					10.15
	3.15				48	Ar.	30				8.57
	3.29				52	Ar.	32				8.45
	3.47				48	Lv.	30				8.26
	5.05				91	Ar.	57				* 7.00
		5.13	1.04	3.00	227	Lv.	141	1.58	1.40	10.30	AM
		5.32	1.22		239	Ar.	149		1.22	10.12	
		6.03	1.55	f 3.48	260	Ar.	162	f 1.07	12.52	9.38	
		6.35	2.25	4.15	285	Ar.	177	12.40	12.25	* 9.00	PM
	* 7.00	PM	2.45	4.30	285	Lv.	177	12.25	12.25	AM	8.57
	7.38		3.21		313	Ar.	194				2.08
	7.49		3.29		319	Ar.	198				8.01
	8.05		3.45		331	Ar.	206				7.45
	8.28		4.02		345	Ar.	214				7.25
	9.06		6.38	6.08	379	Ar.	231	10.41	10.35		6.47
	9.26		4.51	6.22	371	Lv.	231	10.26	10.25		6.17
	9.36		5.01		379	Ar.	236				6.17
	10.11		5.28	f 6.57	401	Ar.	249	f 9.50	9.44		5.47
	10.21		5.37	f 7.07	408	Ar.	254	f 9.41	9.35		5.37
	10.54		6.07	7.36	433	Ar.	269	9.09	9.05		5.00
	11.14		6.17	7.56	433	Lv.	269	8.49	8.45		4.4

Table 19.—YURECUARO, ZAMORA AND LOS REYES

96	.314	Kms.	Mis.	.313	95
AM	AM			AM	PM
* 7.00	*11.15	0	Lv. Yurécuaro.....Ar	0	9.04
7.33	11.55	22	Lv. Falcóni.....Ar	14	8.32
8.09	12.46	42	Lv. Zamora.....Ar	26	8.01
8.40	1.28	62	Lv. Chavinda.....Ar	39	7.21
8.55	1.48	70	Lv. Moreno.....Ar	43	7.08
10.21	3.35	119	Lv. Tingüindín.....Ar	74	5.47
10.55	4.20	138	Lv. Los Reyes.....Lv	86	* 5.00
AM	PM			* 4.15	PM

Table 20.—MEXICO CITY AND PACHUCA

*271	Km.	Mis.	*272
AM	0	61	PM
*10.13	21	48	3.34
10.45	62	22	1.58
11.47	98	0	*1.05
12.40			PM
PM			AM

Table 21.—MEXICO CITY, CUERNAVACA AND BALSAS

45	Km.	Mis.	46	48
AM			PM	Sundays only
*7.35	0	182	5.50	PM
10.23	75	135	3.25	7.20
11.40	120	Ar.	11.20	3.00
12.00	120	Lv.	1.00	1.00
1.54	181	Lv.	11.13	11.13
3.45	238	Lv.	9.12	9.12
4.05	238	Lv.	8.52	8.52
5.50	293	Ar.	*7.15	7.15
PM			AM	AM

Table 22.—MEXICO CITY, CUAUTLA, PUEBLA AND PUENTE DE IXTLA (Narrow Gauge)

130	128	110	Km.	Mis.	109	127	129
PM	PM	AM			PM	PM	AM
*5.55	*12.07	*8.13	0	192	6.15	4.55	9.45
6.24	12.33	8.39	18	181	5.45	4.27	9.15
7.48	1.58	10.03	58	156	4.38	3.18	8.08
8.08	2.17	10.23	70	Ar.	4.11	*2.52	7.41
10.08	PM	12.23	137	Ar.	1.50	PM	*5.19
PM				108		PM	AM
	*258					*257	
	AM					PM	
	*5.50	12.45	137	108	1.30		
	8.37	2.47	205	66	11.24		
	10.12	4.54	265	28	9.30		
	11.16	6.02	297	8	8.26		
	AM	6.46	310	Ar.	*7.43		
		PM		0	AM		
	*253					*254	
	PM					AM	
	*2.25					10.35	
	3.29		23	50		9.33	
	5.00		61	12		7.48	
	5.40		81	0		*7.00	
	PM					AM	

Trains Nos. 253-254 and 257-258 are steam-powered.

BEAUTIFUL LAKE CHAPALA

Regular Bus Service between

GUADALAJARA AND CHAPALA

Only one hour through a picturesque driveway
Comfortable Resort Hotels

Good Fishing

Don't fail to visit this attractive and popular all-year resort

Table 23.—MEXICO CITY, PUEBLA AND OAXACA (For equipment see Table J)

105-104	*241-252-108	111-114	Kms.	Mis.	113-112	107-251-242	103-106
AM	PM	PM			AM	AM	PM
* 7.52	* 9.12	* 5.30	0	360	10.22	6.33	8.58
8.10	9.37	5.50	14	351	9.59	6.05	8.35
8.40	10.56	6.44	59	323	9.07	4.50	7.44
9.10	11.06	6.50	62	321	8.57	4.34	7.33
9.28	11.21	7.00	71	316	8.47	4.18	7.22
9.40	11.36	7.11	79	311	8.36	4.04	7.11
9.53	11.56	7.24	90	304	8.23	3.46	6.55
10.14	12.48	7.45	103	296	8.06	3.25	6.36
10.27	1.05	7.58	113	290	7.49	2.41	6.18
10.45	1.24	8.11	122	284	7.35	2.24	6.00
11.14	1.55	8.34	136	275	7.14	1.57	5.37
11.34	2.17		146	269	6.58	1.27	5.15
12.01	2.49	9.09	161	260	6.37	1.21	4.41
12.25	3.13	9.28	173	252	6.20	12.11	4.17
12.45	3.39	9.41	188	243	6.04	11.29	3.50
	4.56	10.30	213	233	5.45	11.03	3.27
1.46	6.19	10.47	213	Ar.	5.21	10.30	* 2.58
PM	7.08	11.21	232	Lv.	5.06	9.29	PM
	7.37	11.40	250	Ar.	4.17	8.40	
	8.04	12.00	268	Ar.	3.57	8.16	
	8.19	12.12	278	Ar.	3.36	7.47	
	8.51	12.35	300	Ar.	3.25	7.28	
	9.38	1.23	340	Lv.	3.02	6.58	
	9.58	1.33	340	Lv.	2.23	6.01	
	10.46	2.15	372	Ar.	2.13	5.41	
	10.58	2.23	379	Ar.	1.33	4.58	
	11.19	2.41	393	Ar.	1.24	4.48	
	11.46	3.00	408	Ar.	1.05	4.27	
	11.56	3.08	413	Ar.	1.06	4.06	
	12.38	3.49	438	Ar.	12.31	3.50	
	12.57	4.06	447	Ar.	11.47	3.02	
	1.31	4.34	465	Ar.	11.29	2.43	
	2.00	4.70	470	Ar.	11.01	2.12	
	3.19	5.59	505	Ar.	10.50	2.00	
	3.51	6.29	522	Ar.	9.39	12.17	
	4.32	7.10	535	Ar.	9.13	11.49	
	4.50	7.27	544	Ar.	8.42	11.15	
	4.59	7.34	548	Ar.	8.22	10.55	
	5.20	7.53	561	Ar.	8.14	10.46	
	5.43	8.15	579	Ar.	7.55	10.25	
	PM	AM		Ar.	* 7.30	*10.00	AM

(*) Scenic Tomellín Canyon between Tomellín and Las Sedas.

Table 23a.—TEHUACAN-ESPERANZA

*261	*259	Kms.	Mis.	*260
Sundays only				
AM	AM			PM
AM	9.30	0	32	3.55
	8.37	3	30	3.48
	9.55	34	11	2.35
	10.30	51	0	* 2.00
AM	AM			PM

Table 24.—MEXICO CITY AND VERACRUZ (VIA JALAPA) (For equipment of trains Nos. 99-102 and 101-100, see Table E)

134	136	99-102	Kms.	Mis.	101-100	135	133
	Train originates at Jalapa. See table 27.	PM			AM		
		* 8.35	0	293	8.50		
		8.55	14	285	8.28		
		9.45	59	257	7.33		
			63	254			
			71	249			
		10.20	79	244	7.04		
		10.32	90	237	6.52		
		10.55	103	229	6.33		
		11.14	119	219	6.11	PM	
	AM	*10.40	121	157	3.56	2.40	
		11.40	219	127	3.08	1.46	
	AM	1.45	2.18	82	12.45	11.25	PM
	* 7.15	2.05	340	Ar.	12.25	11.05	7.20
	9.38	4.39	340	Lv.	10.01	8.32	4.39
	10.01	5.00	417	Ar.	9.40	8.10	4.17
	10.09	5.06	430	Ar.	9.33	7.59	4.06
	10.17	5.14	434	Ar.	9.33	7.51	3.58
	10.49	5.46	440	Ar.	7.51	7.22	3.28
	11.10	6.05	462	Ar.	* 8.50	* 7.05	* 3.10
	AM	PM	AM	Ar.	PM	AM	PM

There are very nice places worth visiting that can be reached in overnight pullman comfort
FROM MEXICO CITY
and at very attractive low rates
(Please see pages 4 and 5)

Light figures indicate A. M.

FOR EXPLANATION OF SIGNS SEE PAGE 20

Black figures indicate P. M.

TABLE 31.—VERACRUZ, TAPACHULA AND CIUDAD HIDALGO

(For equipment of trains 101-102 and 163-164, see tables K and N)

162	*202	164-167	102	Kms.	Mls.	101	168-163	*201	161
AM *6.00 7.53 9.25 PM *8.15 9.33 12.31	PM *11.00 12.31	AM *11.00 12.31	0 56 102	Lv. Veracruz...Ar Lv. Piedras Negras...Lv Ar. Tierra Blanca...Lv	576 541 512	PM 5.40 4.05 2.35	AM 7.20 5.56 4.50	PM 9.42 7.51 6.02
.....	*4.50 5.52 7.16 8.15	*8.35 9.37 11.06 12.05	0 28 61 93	Lv. Córdoba...Ar Lv. Omealca...Lv Lv. Acatlán...Lv Ar. Tierra Blanca...Lv	58 41 20 0	6.10 5.01 3.37 2.35	10.50 9.37 8.12 *7.10
9.55 11.22 3.25 3.45 5.33 6.02	10.52	2.15 3.25 6.27 6.37 8.06 8.35	102 143 246 246 295 310	Lv. Tierra Blanca...Ar Ar. Tres Valles...Lv Ar. Rodríguez Clara...Lv Ar. Rodríguez Clara...Ar Lv. Achotal...Lv Ar. Medias Aguas...Lv	512 487 423 423 392 383	2.15 1.08 10.05 9.55 8.25 *11.30 7.56	4.35 3.40 1.25 1.20 *12.00	AM 5.32 4.17 12.30 12.10 10.24 *9.45
PM	170 AM 6.05 6.44 7.16 10.15 10.45 11.15	(See table 30 for the schedule of train 168 from Medias Aguas to Coatzacoalcos)	9.45 12.01 12.21 1.55 2.15 2.42 3.07 5.45 6.15 6.43 6.35	339 417 417 469 469 485 505 620 643 643	Lv. Jesús Carranza...Lv Ar. Matias Romero...Lv Lv. Matias Romero...Ar Ar. Ixtepec...Lv Lv. Ixtepec...Ar Lv. Juchitán...Lv Lv. Unión Hidalgo...Lv Lv. Arriaga...Lv Ar. Tonalá...Lv Lv. Tonalá...Ar	365 317 317 281 281 274 262 190 176 176	6.45 4.05 2.35 2.15 1.46 1.20 10.49 10.15 9.55	AM PM 7.05 6.33 6.00 3.09 2.25 2.00
.....	3.02 3.22 4.03 4.15 5.40 *222 7.00	AM 6.20 7.06 7.25 8.49 10.10	10.00 10.04 10.42 10.54 11.48 1.00	779 779 804 809 843 885	Ar. Mapastepec...Lv Ar. Mapastepec...Ar Lv. Soconusco...Lv Lv. Capatzen...Lv Lv. Huixtla...Lv Ar. Tapachula...Lv	92 92 77 73 53 26	6.32 6.28 5.50 5.39 4.43 *3.30	10.14 5.00 4.03 3.49 2.25 *1.00 10.04 9.20 8.51 *221
PM *3.00 4.35 PM	PM	AM	PM	885 927	Lv. Tapachula...Ar Ar. Ciudad Hidalgo...Lv	26 0	PM	AM	AM 11.35 *10.00 AM

Trains Nos. 164-167 and 168-163 with Pullman sleeper and diner to and from Mérida, and on trains Nos. 51 and 52 between Mexico City and Veracruz. See also tables N, F, and 25.

Table 32.—CHIHUAHUA-PACIFIC RY.
 (Under separate management from the NRYsofM)
 General Offices: Calle 19, No. 202, Chihuahua, Chih. (Mexico)

No. 8 Tue. & Fri.	Kms.	Mls.	No. 7 Tue. & Fri.
PM 4.00 9.26 9.40 10.15 2.10 4.53 6.20 7.15 9.24 1.30 2.11 3.00	0 263 268 268 452 565 622 637 708 839 883 921 941	Lv. Presidio, Tex. ¹ Ojinaga Ar. Tabalapa ² Chihuahua ² Chihuahua La Junta Ar. Creel Lv. Divisadero (Barranca del Cobre)▲ San Rafael Temoris (Santa Barbara) El Fuerte Ar. San Blas ¹ Ar. Los Mochis Topolobampo○	AM 7.00 1.44 1.30 1.00 9.40 6.46 5.03 9.07 1.50 9.50 8.56 8.00
PM			AM
Wed. & Sat.			Mon. & Thu.

Trains Nos. 7 and 8. Sleeping cars and dining car between Ojinaga and Los Mochis. Connections: 1) With Santa Fe Lines; 2) With NRYsofM; 3) With Pacific Ry.

Note.—Additional diesel coach service—Autovias—between Chihuahua and Los Mochis with reserved and unreserved seats leaving Chihuahua at 7:30 AM daily except Wednesdays and Sundays, due in San Blas at 7:45 PM and Los Mochis at 8:55 PM same day. Northbound leave Los Mochis at 8:00 AM and San Blas 8:38 AM daily except Mondays and Thursdays, due in Chihuahua at 9:20 PM same day. Between Chihuahua and Ojinaga: Cars leave Chihuahua at 8:30 AM Mondays, Wednesdays and Saturdays and arrive in Ojinaga at 1:00 PM same day. Southbound leave Ojinaga at 4:00 PM Mondays, Wednesdays and Saturdays, and arrive in Chihuahua at 8:30 PM same day. There is an additional diesel-coach on Sundays leaving Chihuahua at 6:30 A.M., arriving in San Rafael at 1:37 P.M., returning from San Rafael at 2:42 P.M. due in Chihuahua at 9:50 P.M. same day. Buffet service.

EXPLANATION OF SIGNS

- * Daily.
- † Daily, except Sunday.
- Mixed.
- || Restaurant.
- f Stops on signal to receive or discharge passengers.
- + Coupon stations.
- (CST)—Central Standard Time.
- (MT)—Mountain Time.
- (PT)—Pacific Time.
- (EST)—Eastern Standard Time.

Light figures indicate A. M.

FOR EXPLANATION OF SIGNS SEE PAGE 20

Black figures indicate P. M.

GENERAL OFFICES

Buenavista Grand Central Station, Mexico City 3, D. F.

EXECUTIVE OFFICERS

ING. E. SANDOVAL R., General Manager

ASSISTANT GENERAL MANAGERS

- LIC. F. O'REILLY LLANO, Administration.
- A. SANTILLÁN B., Operation.
- F. DE J. CUENCA, Traffic.
- I. ORTIZ DAVILA, Finance.
- R. PEREZ PLIEGO, Motive Power and Rolling Equipment.
- LIC. L. MADRAZO B., Purchases. (Bolívar 19, Mexico City 1, D.F.)
- ING. J. G. JAUREGUI, Reconstruction and Maintenance.
- JULIO VARGAS Z., Chief Clerk.

PASSENGER TRAFFIC DEPARTMENT

- J. SÁNCHEZ M., Chief Passenger Traffic Department.
- E. SORIANO B., Assistant Chief Passenger Traffic Department.
- A. CARRILLO, Assistant to Chief Passenger Traffic Department.

FREIGHT TRAFFIC DEPARTMENT

(Bolívar 19, Mexico City 1, D.F.)

- J. A. BORREGO B., Chief Freight Traffic Department.
- MARIO HERRERA M., Assistant to Chief Freight Traffic Department.

UNITED STATES PASSENGER AND FREIGHT REPRESENTATIVES

- F. T. SCANLAN, Executive Representative, 777 Fourteenth St. N. W., 535 Wyatt Bldg., (Tel. District 7-4518), Washington D. C. 20005.
- M. PLATAS, General Agent, 500 Fifth Ave., Room 2623, (Tel. 947-9466) New York, N. Y. 10036
- J. A. DÍAZ, General Agent, Missouri Pacific Depot. (Tel. Randolph 3-5152). Laredo, Tex. (P.O. Box 595)
- A. BARRAZA S., Foreign Agent, passenger station, Ciudad Juárez, Chih. (Mexico) P.O. Box 2200, El Paso, Tex. (Tel. 2-3567)

If you happen to be in **Monterrey** or in **Mexico City** and wish to travel either for business or pleasure to any of these places, why don't you try our fast, overnight all-Pullman train "El Regiomontano"?—See schedules on tables A and 1.

GENERAL INFORMATION

The time. From 12:01 A.M. to 12:00 o'clock noon, inclusive, is shown in light-face type. Between 12:01 P.M. and 12:00 o'clock midnight, inclusive, by darkface type. **Central Standard Time** is observed throughout the entire system of the National Railways of Mexico. The time in Mexico is reckoned from 1 hour to 24 hours. 8:10 A.M. is 8 Hrs. 10 Min. To compute P.M. time add 12 to the hour desired. For instance 5:30 P.M. is 17 Hrs. 30 Min; 8:20 P.M. is 20 Hrs. 20 Min. and so on until midnight which is zero hours. 11:59 P.M. is 23 Hrs. 59 Min. 12 noon is just 12 Hrs.

Tickets. As there is only one class of through fares in Mexico, international tickets sold at coach fares will be honored on the National Railways of Mexico for first-class passage in parlor, sleeping cars or reserved seat coaches **upon payment of usual charge for space occupied.** Exception: On diesel coaches, Trains X-1 to X-8 (AUTOVIAS) operated between Mexico City and Puebla, through tickets are accepted at no additional charge although advance seat reservations are required.

Adjustment of fares. Should any misunderstanding arise with conductors, train auditors, or ticket agents, pay the fare requested, secure a receipt and send it to Mr. O. Gutiérrez de Velasco, Chief Passenger Traffic Department, National Railways of Mexico, Buenavista Grand Central Station, Mexico City 3, D. F.

Redemption of tickets. Unused or partly used tickets of this company's issue will be redeemed under tariff regulations. Communicate with Mr. O. Gutiérrez de Velasco, Chief Passenger Traffic Department, at the address indicated in the preceding paragraph.

Application for refund account through tickets to Mexico destinations purchased in the United States or Canada, not used or partly used for passage, should be filed with proper passenger traffic official of issuing line.

Loss of tickets. Passengers should guard against such loss, as railroads are not responsible.

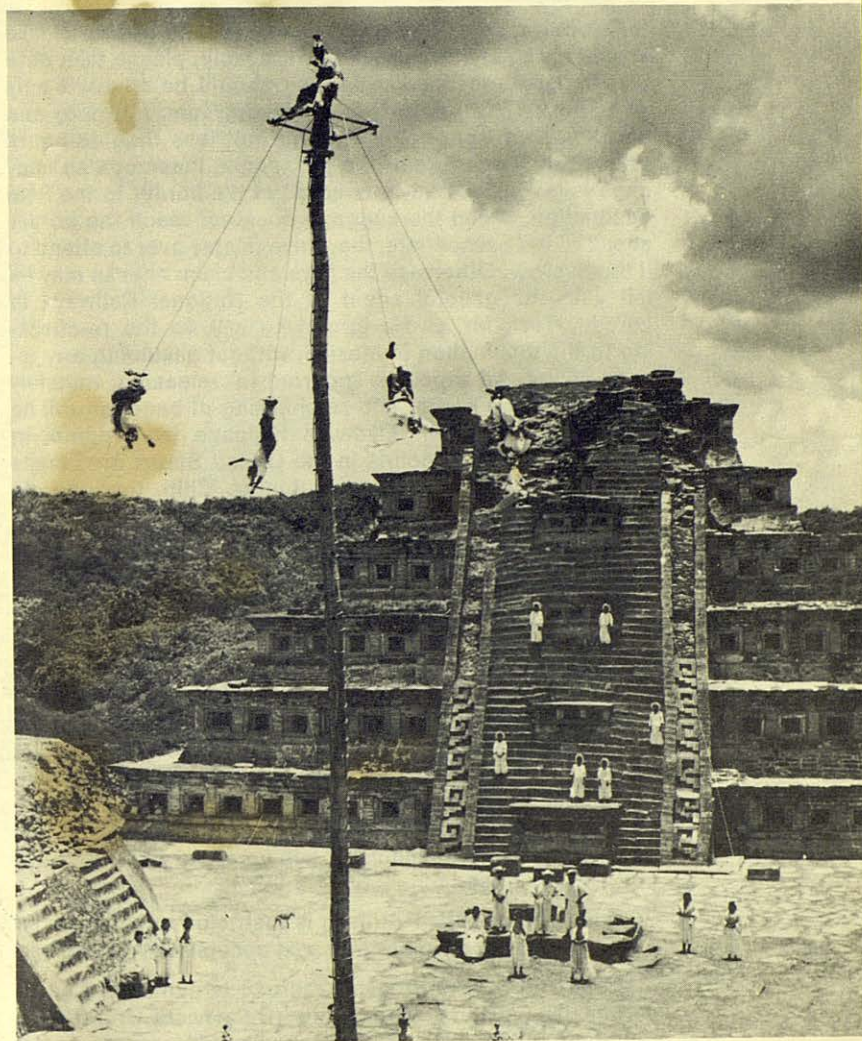
Children. Under five years of age, free, when accompanied by parent or guardian; five years of age and under twelve, one-half fare; twelve years of age and over, full fare.

Stopovers. Are permitted at any point en route within limit of through ticket. Passengers should notify ticket agent or train auditor.

Reserved seat coaches. Reclining chair cars with reserved seats and porter service are no longer operated on the National Railways of Mexico but they may be chartered to accommodate groups or special parties. Consult Mr. O. Gutiérrez de Velasco, Chief Passenger Traffic Department, Buenavista Grand Central Station, Mexico City 3, D. F.

Air-conditioned equipment. Pullman sleepers, dining cars, club cars, lounge-observation coaches, reserved seat coaches (when especially chartered), and diesel-coaches (Autovías), are air-conditioned.

Assignment of Pullman space or reserved seats from stations other than those from which passengers board trains. When Pullman accommodations or reserved seats are requested from a station that has no regularly assigned space for sale, or that such space has been sold out, corresponding rail and sleeping car, or reserved seat fares will be assessed from point from which reservation is made.



Flying pole dancers performing before the Pyramid of Tajin.— Archeological zone in the northern part of the State of Veracruz.

**Minimum ticket requirements
for occupancy of space in sleeping cars:**

Seat.....One adult ticket
 Berth (upper or lower)....One adult ticket each
 (One adult and one half-fare child can occupy a section—
 upper and lower—at no additional rail fares)
 Roomette.....One adult ticket
 Bedroom (single or double).Two adult tickets
 Two bedrooms en suite....Four adult tickets
 Compartment.....Two and one-half adult tickets
 Drawing-room.....Three adult tickets

Note. A section (upper and lower) can be sold to one passenger at single occupancy rate by Pullman conductor on board only.

Checking of baggage. Passengers who desire to take advantage of checking facilities available, please take note that baggage destined to Mexico should be checked only to El Paso, Tex., or to Nuevo Laredo, Tam. (Mexico) and be forwarded from point of origin not less than 48 hours prior to the departure of the passenger, inasmuch as baggage is inspected and re-checked at the border to the final destination. When the baggage does not reach the border ahead of the passengers, they have to stay over to attend to it themselves. Otherwise the keys and claim checks may be left with the general agent of the National Railways in Laredo, Tex., Mr. L. Navarro, who will do the re-checking to the destination in Mexico, without assuming any responsibility. All expenses incurred for releasing, transferring across the border and re-checking of baggage will be borne by passenger. Likewise baggage from points in Mexico destined to points in the United States or Canada should be checked to Ciudad Juarez, Chih. (opposite El Paso, Tex.) or Laredo, Tex.

Baggage allowance. In connection with through tickets there is a free allowance of 150 pounds for each adult passenger and 75 pounds for each child traveling on a half-fare ticket. With local tickets this free allowance is limited to 110 pounds for each adult passenger and 55 pounds for each child traveling on a half-fare ticket.

Definition of baggage. Personal wearing apparel, toilet articles except liquids, and other personal effects in actual use and necessary for the comfort and convenience of the passenger. Money, jewelry, negotiable papers and like valuables, fragile or perishable articles, radios, phonographs and records and household goods must not be included in checked baggage.

Hand baggage in Pullman is restricted to what can be conveniently placed in berth or seat occupied by passenger.

Parcel room facilities. At railroad terminals in Ciudad Juarez, Guadalajara, Mexico City (Buenavista Grand Central Station), Monterrey, Nuevo Laredo and Veracruz, parcel room facilities for temporarily storing luggage, parcels, etc., are available. This service should not be mistaken for the

regular checking of baggage to be transported on trains.

RED CAP PORTER SERVICE. Available at stations in large cities. At Buenavista Grand Central Station in Mexico City you are expected to pay:

From one to three pieces, three pesos (24¢ U.S. Cy.) each service.

Four or five pieces, five pesos (40¢ U.S. Cy.) each service.

Wheel chair service for invalids and infirm passengers from taxi to train or vice versa, including hand baggage, twenty pesos (\$1.60 U.S. Cy.).

Rate of exchange at National Railways ticket offices.
 12½ pesos for one U.S. dollar.

At the rate of 12½ pesos for one dollar

Dollars	Pesos	Dollars	Pesos	Dollars	Pesos	Dollars	Pesos	Dollars	Pesos
1	12.50	21	262.50	41	512.50	61	762.50	81	1012.50
2	25.00	22	275.00	42	525.00	62	775.00	82	1025.00
3	37.50	23	287.50	43	537.50	63	787.50	83	1037.50
4	50.00	24	300.00	44	550.00	64	800.00	84	1050.00
5	62.50	25	312.50	45	562.50	65	812.50	85	1062.50
6	75.00	26	325.00	46	575.00	66	825.00	86	1075.00
7	87.50	27	337.50	47	587.50	67	837.50	87	1087.50
8	100.00	28	350.00	48	600.00	68	850.00	88	1100.00
9	112.50	29	362.50	49	612.50	69	862.50	89	1112.50
10	125.00	30	375.00	50	625.00	70	875.00	90	1125.00
11	137.50	31	387.50	51	637.50	71	887.50	91	1137.50
12	150.00	32	400.00	52	650.00	72	900.00	92	1150.00
13	162.50	33	412.50	53	662.50	73	912.50	93	1162.50
14	175.00	34	425.00	54	675.00	74	925.00	94	1175.00
15	187.50	35	437.50	55	687.50	75	937.50	95	1187.50
16	200.00	36	450.00	56	700.00	76	950.00	96	1200.00
17	212.50	37	462.50	57	712.50	77	962.50	97	1212.50
18	225.00	38	475.00	58	725.00	78	975.00	98	1225.00
19	237.50	39	487.50	59	737.50	79	987.50	99	1237.50
20	250.00	40	500.00	60	750.00	80	1000.00	100	1250.00

Miscellaneous. Dogs and small household pets, may be transported in baggage cars in accordance with tariff regulations. They can be taken into and out of Mexico upon presentation of a veterinarian's certificate attesting that they have been vaccinated with an antirabies serum.

Time tables. While every precaution is taken, the National Railways of Mexico is not responsible for errors in time tables nor for inconveniences or damage resulting from delayed trains or failure to make connections. Schedules and equipment in this time table folder are subject to change without notice.

To locate stations you are interested in see index, on page 23, which lists all the numbers of the time tables in which each station is shown.

Additional information on rates and train service in Mexico City. May be obtained from the passenger traffic department at Buenavista Grand Central Station. Tel. 47-8971 or 47-5060 to 47-5069, Extension 64; from the downtown ticket office located at Cinco de Mayo Ave., and Bolivar St. Tels. 13-5718, 21-0546 or 12-3732; or from the information bureau located at Buenavista Grand Central Station, Tels. 47-1084 or 47-1097, where information concerning exact trains' arrival time can also be ascertained.

Mexico City Railroad Terminal. Trains shown on these time tables (unless otherwise noted), arrive at and depart from Buenavista Grand Central Station in Mexico City.

INDEX TO STATIONS SHOWING TIME TABLE NUMBERS

Stations indexed in this list are those which appear in time tables printed in this publication, include some of connecting lines, both in Mexico and in the United States, and do not comprise all the stations on the National Railways of Mexico.

Table No.		Table No.		Table No.		Table No.	
A	Abasolito, N.L. 6						
	Abasolo, Gto. 15						
	Abelardo Rodríguez, Coah. 6						
	Acacio, Coah. 27						
	Acajeete, Pue. 1, 14, 16						
	Acámbaro, Gto. 31						
	Acapetahua, Chis. 31						
	Acatlán, Oax. 31						
	Acholal, Ver. 31						
	Acocotla, Tlax. 25						
	Acopinalta, Hgo. 3						
	Adames, Ags. 3						
	Aguascalientes, Ags. D, 3, 11						
	Aguatepec, Méx. 23, 24						
	Agua Buena, Mich. 16						
	Agua Nueva, Coah. 3						
	Ahorcado, Oro. 3						
	Ahumada, Chih. 3						
	Aljuno, Mich. 16, 18						
	Alamo, N.L. 1						
	Albany, N.Y. B						
	Alidama, N.L. 1						
	Allende, Coah. 5, 5-a						
	Altepexi, Pue. 23						
	Alvarado, Ver. 28						
	Amecameca, Méx. 22						
	Amozoc, Pue. 23, 27						
	Anáhuac, N.L. 1						
	Anasco, Tlax. 16						
	Angangueo, Mich. 16						
	Andocutín, Gto. 16						
	Antigua, Ver. 24						
	Apam, Hgo. 25						
	Apaseo, Gto. 17						
	Apatzingán, Mich. 1						
	Apaxco, Méx. 25, 26, 27-a						
	Apizaco, Tlax. 1, 3						
	Aragón, Hgo. K, 31						
	Arriaga, Chis. K, 31						
	Atencingo, Pue. 22						
	Atenquiza, Jal. 15						
	Atlixco, Jal. 16						
	Atotonilco, Gto. 22						
	Atoyac, Ver. 25						
	Austin, Tex. A						
B	Balsas, Gro. 21						
	Baltimore, Md. B						
	Barroterán, Coah. 5, 16						
	Bassoco, Méx. G						
	Benjamin Hill, Soth. 3						
	Bermijillo, Dgo. 1						
	Bernal, Oro. 1						
	Berriozabal, Zac. 3						
	Boca del Monte, Pue. 25						
	Bocas, S.L.P. B						
	Buffalo, N.Y. B						
	Bustamante, N.L. 1						
C	Calera, Hgo. 1						
	Calles, Tam. 2, 2-a						
	Calpulalpán, Tlax. 23						
	Caltzontzin, Mich. 16, 17						
	Camacho, Zac. 3						
	Camargo, Tam. 4						
	Camaron, N.L. 25						
	Camaron, Ver. N						
	Campeche, Camp. 23-a						
	Cañada, Pue. 1						
	Candela, N.L. 1						
	Cantuna, Zac. 9						
	Canutillo, Zac. 9						
	Cardel, Ver. 10						
	Cárdenas, S.L.P. 27						
	Carmela, Tlax. 27						
	Carneros, Coah. 1						
	Carrasco, Hgo. 1						
	Castro, Jal. 3						
	Catorce, S.L.P. 3						
	Cazadero, Oro. 1						
	Ceballos, Dgo. 3						
	Celaya, Gto. 3, 13, 14, 15						
	Cerro Colorado, Coah. 7						
	Charcas, S.L.P. 1						
	Chavinda, Mich. 19						
	Chicalote, Ags. 3						
	Chicago, Ill. C						
	Chihuahua, Chih. D, 3, 32						
	Chinameca, Ver. 30						
	Chintepec, Oro. 3						
	Chirimoya, Gto. 1						
	Cholula, Pue. 22						
	Cincinnati, O. B						
	Ciudad Acuña, Coah. 5-a						
	Ciudad Guzmán, Jal. 15						
	Ciudad Frontera, Coah. 5						
	Ciudad Hidalgo, Chis. K, 31						
	Ciudad Juárez, Chih. D, 3						
	Ciudad Victoria, Tam. 2						
	Coatzacoalcas, Ver. N, 30						
	Collima, Col. 15						
	Columbus, O. B						
	Comonfort, Gto. 1						
	Concho, Chih. 3						
	Concejos, Dgo. 6						
	Concordia, Coah. 23						
	Condega, Tlax. 23						
	Córdoba, Ver. F, 25, 31						
	Corralito, Gto. 15						
	Corralitos, Chih. 3						
	Cortazar, Gto. 3						
	Creel, Chih. 32						
	Cuatián, Méx. 1, 3						
	Cuatotolan, Ver. 29						
	Cuautla, Mor. 22						
	Cuernavaca, Mor. 21						
	Cuicatlan, Oax. 23						
	Cuicatlán, Sin. G						
	Cuyutlán, Col. 15						
D	Dañu, Hgo. 3						
	Dayton, O. B						
	Del Rio, Méx. 16						
	Del Rio, Tex. 5-a						
	Díaz, Chih. 3						
	Divisadero, Chih. 32						
	Dolores Hidalgo, Gto. 16						
	Doña Rosa, Méx. 16						
	Dos Ríos, Méx. 12						
	Durango, Dgo. 8, 9						
E	Eagle Pass, Tex. 5						
	El Castillo, Jal. 15						
	El Centinela, Coah. 6						
	El Compa, Dgo. 32						
	El Fuerte, Sin. 2-a						
	El Mantel, Tam. D, 3						
	El Paso, Tex. D, 3						
	El Oro, Méx. 16						
	El Salto, Hgo. 1						
	El Rey, Hgo. 1						
	El Salado, S.L.P. 9						
	El Sicho, Dgo. 9						
	Empalme, Son. G						
	Encantada, Coah. 1, 7						
	Encarnación, Jal. 3						
	Escalón, Chih. 1, 5, 13, 14						
	Escondido, Gto. 23-a, 25						
	Esperanza, Pue. 23						
	Etiá, Oax. 23						
F	Falconi, Mich. 19						
	Felipe Pescador, Zac. 3, 9						
	Flor de María, Méx. 16						
	Fortín, Ver. F, 25						
	Francisco Pérez, Gto. 3						
	Fresnillo, Zac. 3						
	Frio, Zac. 9						
G	Gallejo, Chih. 3						
	Garabato, Ags. 3						
	Garza, N.L. 1						
	General Cepeda, Coah. 7						
	Gerónimo, Zac. 3						
	Gilita, Coah. 7						
	Golondrinas, N.L. 1						
	Gómez Farías, Coah. 3						
	Gómez Palacio, Dgo. 3, 6						
	Grajales, Pue. 27						
	Gregorio García, Dgo. 6						
	Guadalajara, Jal. G, M, 15						
	Guadalupe, Tlax. 25						
	Guadalupe, Zac. 3						
	Guatimpe, Zac. 9						
	Guanajuato, Gto. L, 12						
	Guatimpe, Dgo. 8						
	Guaymas, Son. G						
H	Harrisburg, Pa. B						
	Harcules, Oro. 1, 3						
	Hermosillo, Son. C						
	Héroes Carranza, Hgo. 3						
	Hibueras, Ver. 30						
	Hidalgo, N.L. 6						
	Higuera, Coah. 1						
	Hidalgo, Coah. 6						
	Horcasitas, Chih. 3						
	Huamantla, Tlax. 25						
	Huehuetoca, Méx. 1, 3						
	Huichapan, Hgo. 1						
	Huingo, Mich. 23						
	Huixtla, Oax. 23						
	Huixtla, Chis. 31						
I	Ignacio Allende, Dgo. 8						
	Ignacio Mejía, Oax. 23						
	Iguala, Gro. 21						
	Indianapolis, Ind. B						
	Irapuato, Gto. 3, 12, 13, 15, 18						
	Irolo, Hgo. 25						
	Iturbide, Tlax. 24						
	Ixtlahuaca, Oax. 30, 31						
	Ixtlahuaca, Méx. 16						
	Ixtle, Coah. 6						
J	Jalapa, Ver. E, 24, 27						
	Jaltepec, Méx. 23, 24						
	Jatón, Ver. 30						
	Jaral de Berrio, Gto. 1						
	Jarita, N.L. 1						
	Jasso, Hgo. 3						
	Jesús Carranza, Ver. 30, 31						
	Jesús María, S.L.P. 1						
	Jimulco, Coah. 3						
	Joquin, Gro. 15						
	Jojutla, Mor. 22						
	Juchitán, Oax. 31						
	Juñe, Ver. 30						
L	La Barca, Jal. 15						
	La Capilla, Jal. 15		</				

NATIONAL RAILWAYS OF MEXICO



WINTER-SPRING
1966