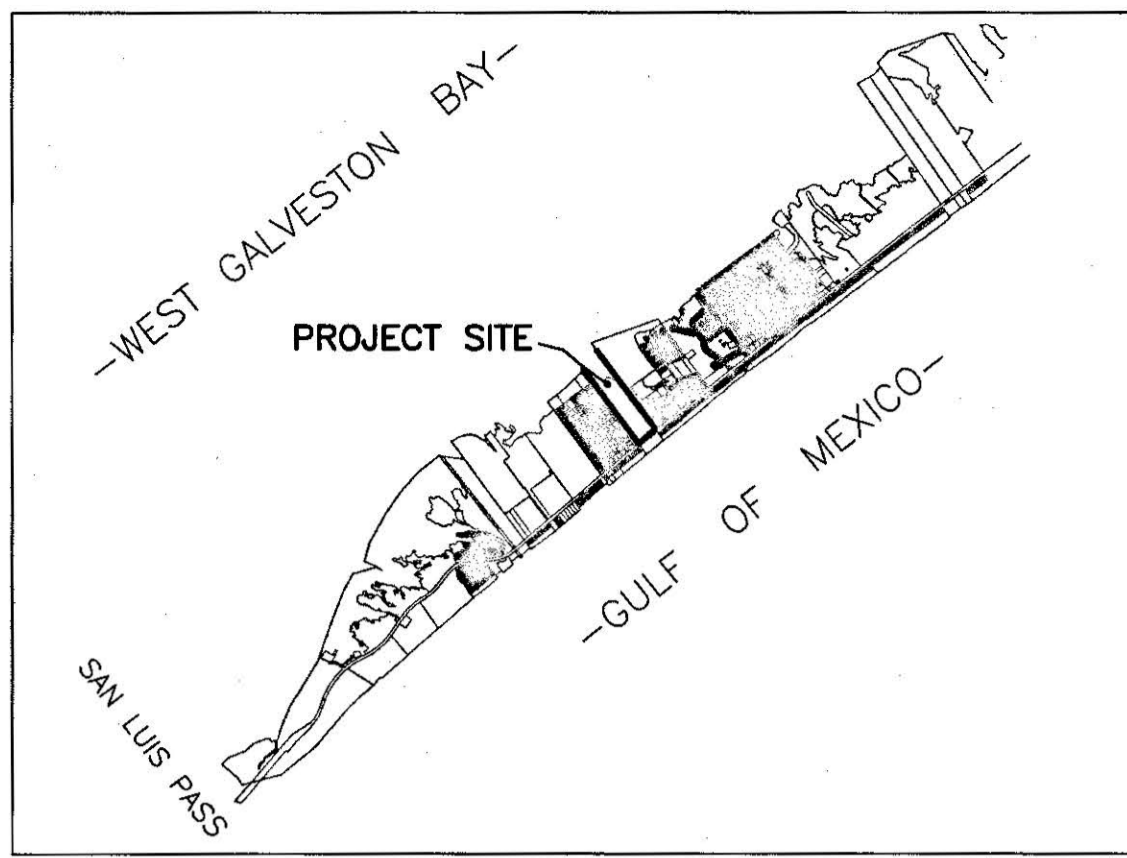


GALVESTON ISLAND

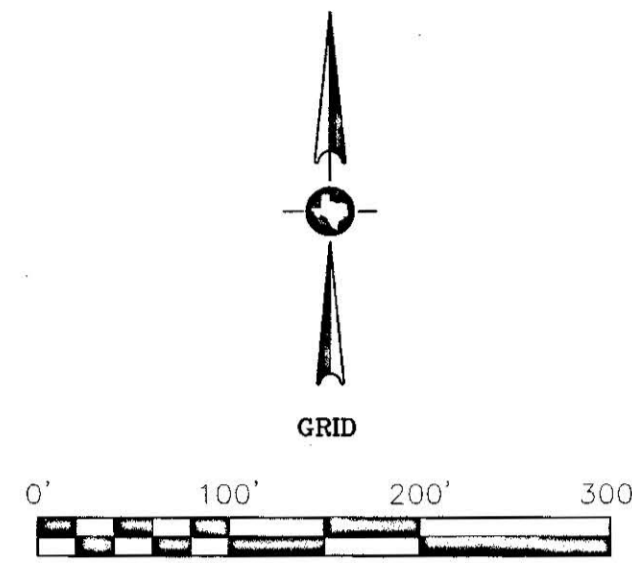


VICINITY MAP (nts)
WEST GALVESTON COUNTY,
TEXAS

General Land Office ID No.
SL 20090024
Terramar Beach Community Improvement
Association, Inc.

Tide Gauge
N 13625644.66
E 3234303.89

NGS Monument
G-460 Reset
N: 13621154.13
E: 3233204.29



"NOTICE: This survey was performed in accordance with Section 33.136, Natural Resources Code, for the purpose of evidencing the location of the shoreline in the area depicted in this survey as that shoreline existed before commencement of erosion response activity, as required by Chapter 33, Natural Resources Code. The line depicted on this survey fixes the shoreline for the purpose of locating a shoreline boundary, subject to movement landward as provided by Section 33.136, Natural Resources Code."

"This survey does not nor is intended to be used to identify, delineate or fix the line of vegetation or the landward boundary of the public beach."

Lines Shown were surveyed on the ground by Sidney Bouse and Keith Clark between April 15, 2008 and April 29, 2008.

NOTES:

- 1.) ALL COORDINATES BASED ON THE TEXAS STATE COORDINATE SYSTEM OF 1983, SOUTH-CENTRAL ZONE, AS DEFINED BY ARTICLE 21.071 OF THE NATURAL RESOURCES CODE OF THE STATE OF TEXAS GIVEN IN US SURVEY FEET
- 2.) DISTANCES ARE GRID DISTANCES IN SAID FEET AND VARAS.

Local Tide Gauge referenced to:

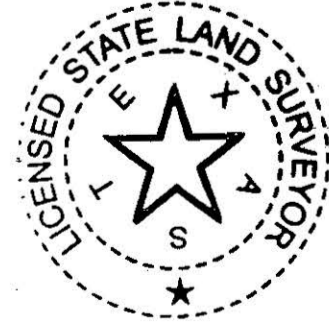
PIER 21, GALVESTON CHANNEL, Texas- National Ocean
Service Station ID: 8771450
LENGTH OF SERIES: 5 Years
TIME PERIOD: January 1997-December 2001
TIDAL EPOCH: 1983-2001
CONTROL TIDE STATION: N/A.

July 24, 2008 Revised 05-08-09 to show additional boundary as authorized by William H. Taylor III.

I hereby certify that the above described property was surveyed in the field according to law under my direction on the above dates, and that the above map together with dimensions and coordinates is true and correct as of the above date.

COASTAL SURVEYING OF TEXAS, Inc.

Sidney Bouse
Sidney Bouse
Licensed State Land Surveyor
email: sid@surveygalveston.com



COASTAL SURVEYING OF TEXAS, INC.
GALVESTON OFFICE: 8017 HARBORSIDE DRIVE (physical)
P.O. BOX 877 (mailing)
GALVESTON, TX 77553
PH (409) 740-1517 FX (409) 740-0372
CRYSTAL BEACH OFFICE: 975 Lazy Lane West (physical)
P.O. BOX 2742 (mailing)
CRYSTAL BEACH, TX 77650
PH (409) 684-6400 FX (409) 684-6112
WWW.SURVEYGALVESTON.COM
08-5155 rev 05-08-09

Control Point
NGS Monument Bay Harbor 1982
N 13613564.93
E 3223723.25
6.32 Feet above MHW

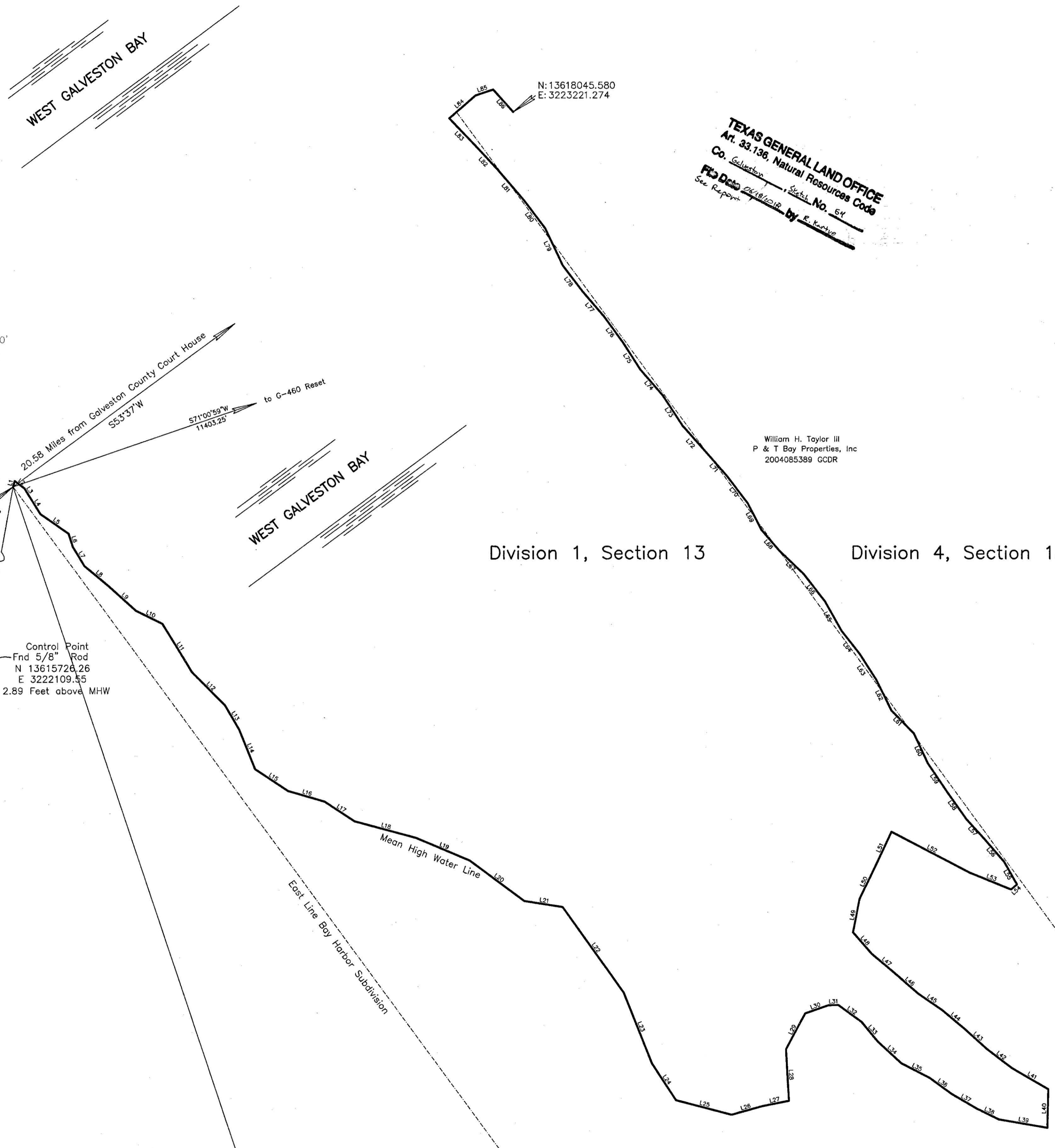
N: 13618045.580
E: 3223221.274

TEXAS GENERAL LAND OFFICE
Art. 33.136, Natural Resources Code
Co. Galveston
P & T Bay Properties, Inc.
2004085389 GCDR

William H. Taylor III
P & T Bay Properties, Inc.
2004085389 GCDR

POB LINE 1
N 13617444.67
E 3222421.24
Convergence: 1'55"29"
CSF 0.999869331

Control Point
Fnd 5/8" Rod
N 13615726.26
E 3222109.55
2.89 Feet above MHW



Mean High Water Survey of part of Division 1 and Division 4, Section 13 of the Edward Hall and Levi Jones Subdivision, of the Trimble and Lindsey Survey of Galveston Island, Abstract No. 121, Galveston County, Texas, 20.58 miles S 53'37" W of the Galveston County Courthouse

COMMENCING at NGS Monument G-460 Reset (N 13621154.13 feet, E 3233204.29 feet);

THENCE S 71°00'59" W, a distance of 11,403.25 feet (4,105.2 varas) to the intersection of the West line of the said Galveston County tract, and the Mean High Water line of West Galveston Bay and the POINT OF BEGINNING (N 13617444.67 feet, E 3222421.24 feet Convergence 1'55'29" Combined Scale Factor (CSF) 0.999869331);

THENCE following the said Mean High Water line the following courses and distances:

- L1 THENCE N 15°35'59" E, a distance of 9.77 feet (3.5 varas);
- THENCE S 52°48'07" E, a distance of 19.48 feet (7.0 varas);
- THENCE S 31°26'27" E, a distance of 13.42 feet (4.8 varas);
- THENCE S 31°53'27" E, a distance of 35.30 feet (12.7 varas);
- THENCE S 55°06'15" E, a distance of 55.14 feet (19.9 varas);
- THENCE S 17°14'14" E, a distance of 22.40 feet (8.1 varas);
- THENCE S 31°15'15" E, a distance of 35.77 feet (12.9 varas);
- THENCE S 49°54'34" E, a distance of 51.74 feet (18.6 varas);
- THENCE S 47°58'37" E, a distance of 57.33 feet (20.6 varas);
- L10 THENCE S 63°43'42" E, a distance of 47.09 feet (17.0 varas);
- THENCE S 31°27'13" E, a distance of 89.99 feet (32.4 varas);
- THENCE S 44°50'37" E, a distance of 75.68 feet (27.2 varas);
- THENCE S 30°22'12" E, a distance of 44.97 feet (16.2 varas);
- THENCE S 21°46'47" E, a distance of 67.68 feet (24.4 varas);
- THENCE S 56°38'35" E, a distance of 62.63 feet (22.5 varas);
- THENCE S 73°51'16" E, a distance of 60.98 feet (22.0 varas);
- THENCE S 56°44'35" E, a distance of 57.20 feet (20.6 varas);
- THENCE S 74°57'16" E, a distance of 101.70 feet (36.6 varas);
- THENCE S 67°09'16" E, a distance of 93.27 feet (33.6 varas);
- L20 THENCE S 53°19'17" E, a distance of 108.32 feet (39.0 varas);
- THENCE S 81°09'57" E, a distance of 81.93 feet (29.3 varas);
- THENCE S 55°33'11" E, a distance of 168.05 feet (60.5 varas);
- THENCE S 21°47'19" E, a distance of 122.02 feet (43.9 varas);
- THENCE S 33°14'01" E, a distance of 70.14 feet (25.3 varas);
- THENCE S 75°16'47" E, a distance of 92.01 feet (33.1 varas);
- THENCE N 74°31'33" E, a distance of 50.35 feet (18.1 varas);
- THENCE N 78°35'26" E, a distance of 44.29 feet (15.9 varas);
- THENCE N 03°16'29" W, a distance of 82.48 feet (29.7 varas);
- THENCE N 28°19'10" E, a distance of 64.95 feet (23.4 varas);
- L30 THENCE N 70°38'57" E, a distance of 38.98 feet (14.0 varas);
- THENCE N 88°18'26" E, a distance of 18.21 feet (6.6 varas);
- THENCE S 53°47'13" E, a distance of 46.24 feet (16.6 varas);
- THENCE S 39°54'25" E, a distance of 41.80 feet (15.0 varas);
- THENCE S 47°29'44" E, a distance of 50.07 feet (18.0 varas);
- THENCE S 62°38'41" E, a distance of 50.49 feet (18.2 varas);
- THENCE S 53°48'43" E, a distance of 43.43 feet (15.6 varas);
- THENCE S 59°52'28" E, a distance of 46.88 feet (16.9 varas);
- THENCE S 63°52'40" E, a distance of 38.95 feet (14.0 varas);
- THENCE S 80°21'39" E, a distance of 78.49 feet (28.3 varas);
- L40 THENCE N 01°24'31" E, a distance of 61.50 feet (22.1 varas);
- THENCE N 59°49'14" W, a distance of 67.11 feet (24.2 varas);
- THENCE N 52°41'29" W, a distance of 50.61 feet (18.2 varas);
- THENCE N 47°57'33" W, a distance of 46.86 feet (16.9 varas);
- THENCE N 50°03'56" W, a distance of 47.71 feet (17.2 varas);
- THENCE N 55°25'06" W, a distance of 46.37 feet (16.7 varas);
- THENCE N 48°49'44" W, a distance of 44.69 feet (16.1 varas);
- THENCE N 49°50'41" W, a distance of 52.55 feet (18.9 varas);
- THENCE N 41°18'19" W, a distance of 45.86 feet (16.5 varas);
- THENCE N 10°50'01" E, a distance of 54.11 feet (19.5 varas);
- L50 THENCE N 26°04'49" E, a distance of 56.08 feet (20.2 varas);
- THENCE N 25°03'48" E, a distance of 63.01 feet (22.7 varas);
- THENCE S 62°24'10" E, a distance of 140.77 feet (50.7 varas);
- THENCE S 68°00'56" E, a distance of 71.56 feet (25.8 varas);
- THENCE N 49°01'22" E, a distance of 12.26 feet (4.4 varas);
- THENCE N 29°12'31" W, a distance of 41.73 feet (15.0 varas);
- THENCE N 41°11'14" W, a distance of 48.04 feet (17.7 varas);
- THENCE N 42°08'58" W, a distance of 41.87 feet (15.1 varas);
- THENCE N 35°27'24" W, a distance of 52.29 feet (18.8 varas);
- THENCE N 33°55'01" W, a distance of 55.59 feet (20.0 varas);
- L60 THENCE N 25°05'23" W, a distance of 52.84 feet (19.0 varas);
- THENCE N 44°21'18" W, a distance of 51.34 feet (18.5 varas);
- THENCE N 26°22'40" W, a distance of 55.12 feet (19.8 varas);
- THENCE N 32°44'25" W, a distance of 46.78 feet (16.8 varas);
- THENCE N 37°59'50" W, a distance of 47.93 feet (17.3 varas);
- THENCE N 29°30'36" W, a distance of 54.84 feet (19.7 varas);
- THENCE N 37°49'53" W, a distance of 55.10 feet (19.8 varas);
- THENCE N 46°13'41" W, a distance of 53.54 feet (19.3 varas);
- THENCE N 40°31'15" W, a distance of 44.96 feet (16.2 varas);
- L70 THENCE N 26°53'33" W, a distance of 47.50 feet (17.1 varas);
- THENCE N 37°15'28" W, a distance of 54.60 feet (19.7 varas);
- THENCE N 40°56'06" W, a distance of 52.47 feet (18.9 varas);
- THENCE N 41°36'55" W, a distance of 55.38 feet (19.9 varas);
- THENCE N 32°53'35" W, a distance of 57.57 feet (20.7 varas);
- THENCE N 40°50'47" W, a distance of 55.33 feet (19.9 varas);
- THENCE N 32°38'23" W, a distance of 51.93 feet (18.7 varas);
- THENCE N 36°03'56" W, a distance of 51.68 feet (18.6 varas);
- THENCE N 40°27'26" W, a distance of 52.88 feet (19.0 varas);
- THENCE N 37°09'28" W, a distance of 52.06 feet (18.7 varas);
- THENCE N 25°01'42" W, a distance of 65.26 feet (23.5 varas);
- L80 THENCE N 37°02'12" W, a distance of 56.13 feet (20.2 varas);
- THENCE N 40°26'13" W, a distance of 65.14 feet (23.5 varas);
- THENCE N 42°57'07" W, a distance of 53.81 feet (19.4 varas);
- THENCE N 43°30'56" W, a distance of 58.81 feet (21.2 varas);
- THENCE N 48°48'55" E, a distance of 55.99 feet (20.2 varas);
- THENCE N 71°39'05" E, a distance of 29.59 feet (10.7 varas);
- L86 THENCE S 41°29'36" E, a distance of 48.00 feet (17.3 varas) to the POINT OF TERMINATION, at N 13618045.58' and E 3223221.274'.

Division 1, Section 13 Division 4, Section 13

Hall and Jones Survey
Trimble and Lindsey Survey of Galveston Island, Abstract 121
Mean High Water Survey of part of Division 1 and Division 4, Section 13 of the Edward Hall and Levi Jones Subdivision, of the Trimble and Lindsey Survey of Galveston Island, Abstract No. 121, Galveston County, Texas, 20.58 miles S 53'37" W of the Galveston County Courthouse



Survey Division
Coastal Boundary Survey Approval

Project: Terramar Beneficial Use Project/ a.k.a. Galveston County Pocket Park No. 4

Project No: TGLO No. SL 20090024
Army Corps of Engineers Permit No. SWG-2008-00406

Project Manager: Jeffrey Davis, Upper Coast
Sidney Bouse, R.P.L.S., L.S.L.S.
Coastal Surveying of Texas, Inc.
8017 Harborside Drive
Galveston, Texas 77553 Ph. (409) 740-1517

TEXAS GENERAL LAND OFFICE
Art. 33.136, Natural Resources Code
Co. Galveston, Sketch No. 54
File Date 06/18/2018 by R. Kertve

Description: Mean High Water Line survey of a portion of south shore of West Galveston Bay along the north boundary of Division 1, Section 13, Hall and Jones subdivision of the Trimble & Lindsey Survey of Galveston Island, Abstract 121, situated approximately 20.58 miles, S 53° 37' W, from the Courthouse, Galveston County, Texas.

A Coastal Boundary Survey for the above-referenced project has been reviewed and accepted; upon completion of public notice requirements, the survey will be filed in the Texas General Land Office, Archives and Records, in accordance with provisions of the Texas Natural Resources Code, Chapter 33.136.

Approved:

Signed: [Signature] Survey Division Date 5/22/2009

Approval Filed as:

Tex. Nat. Res. Code Article 33.136 Galveston County Report No. 54