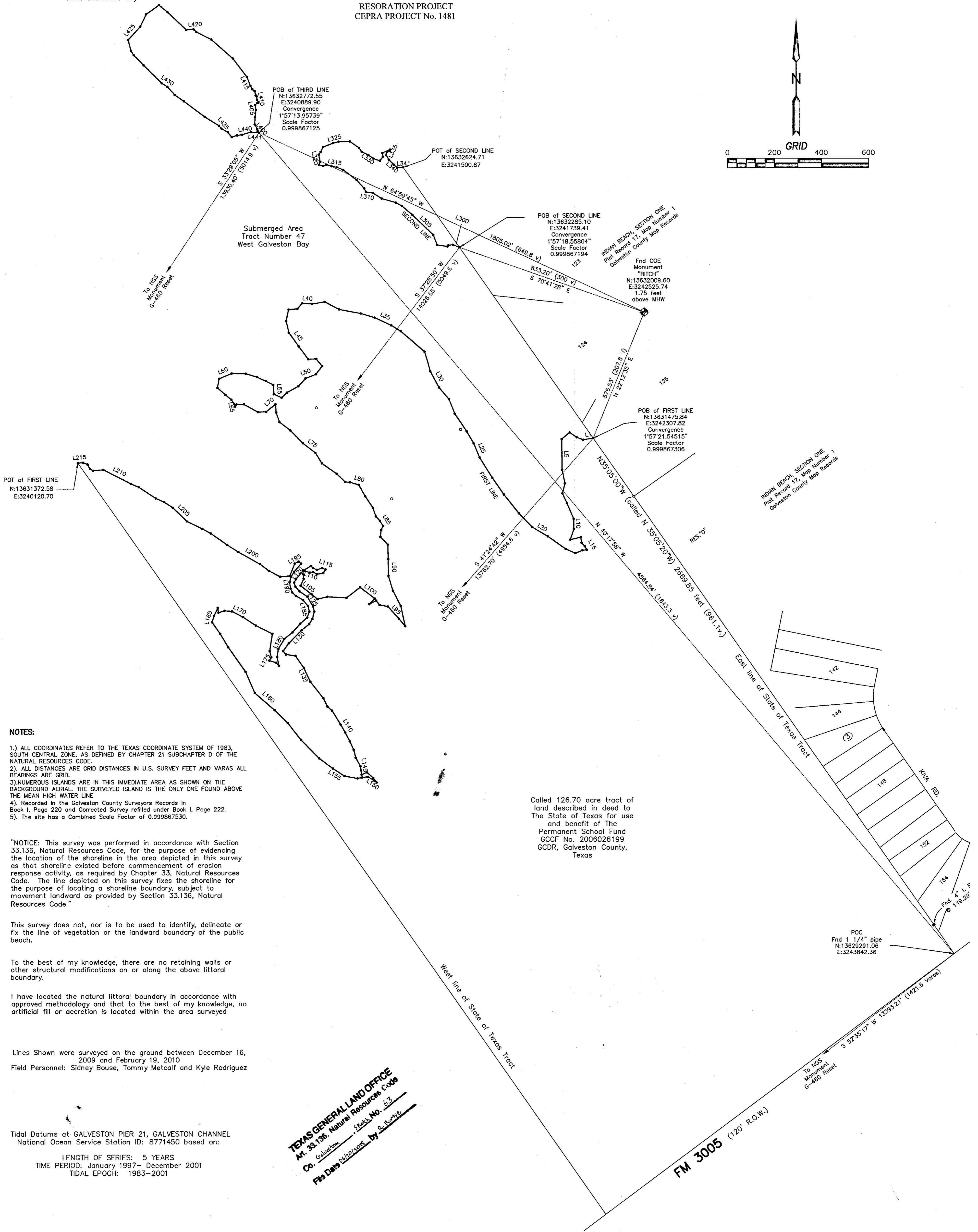
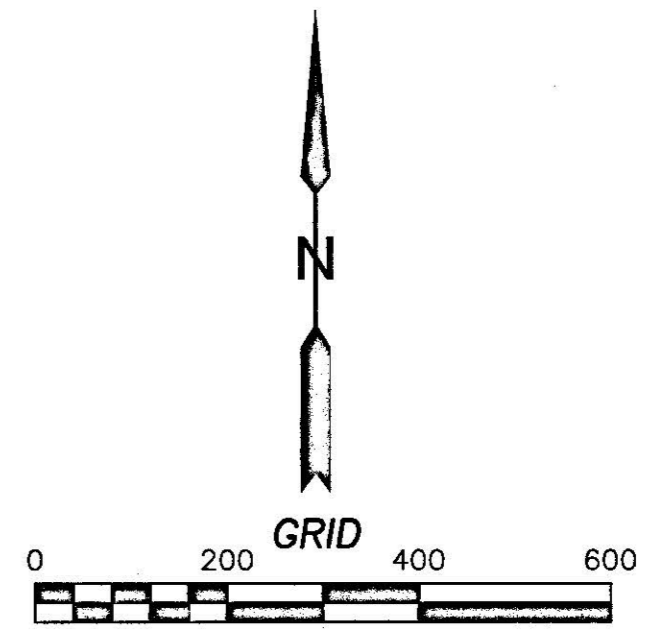


Submerged Area  
Tract Number 47  
West Galveston Bay

McALLIS POINT ESTUARINE HABITAT  
RESORATION PROJECT  
CEPRA PROJECT No. 1481



NOTES:

- 1.) ALL COORDINATES REFER TO THE TEXAS COORDINATE SYSTEM OF 1983, SOUTH CENTRAL ZONE, AS DEFINED BY CHAPTER 21 SUBCHAPTER D OF THE NATURAL RESOURCES CODE.
- 2.) ALL DISTANCES ARE GRID DISTANCES IN U.S. SURVEY FEET AND VARAS ALL BEARINGS ARE GRID.
- 3.) NUMEROUS ISLANDS ARE IN THIS IMMEDIATE AREA AS SHOWN ON THE BACKGROUND AERIAL THE SURVEYED ISLAND IS THE ONLY ONE FOUND ABOVE THE MEAN HIGH WATER LINE
- 4.) Recorded in the Galveston County Surveyors Records in Book I, Page 220 and Corrected Survey refilled under Book I, Page 222.
- 5.) The site has a Combined Scale Factor of 0.999867530.

"NOTICE: This survey was performed in accordance with Section 33.136, Natural Resources Code, for the purpose of evidencing the location of the shoreline in the area depicted in this survey as that shoreline existed before commencement of erosion response activity, as required by Chapter 33, Natural Resources Code. The line depicted on this survey fixes the shoreline for the purpose of locating a shoreline boundary, subject to movement landward as provided by Section 33.136, Natural Resources Code."

This survey does not, nor is to be used to identify, delineate or fix the line of vegetation or the landward boundary of the public beach.

To the best of my knowledge, there are no retaining walls or other structural modifications on or along the above littoral boundary.

I have located the natural littoral boundary in accordance with approved methodology and that to the best of my knowledge, no artificial fill or accretion is located within the area surveyed

Lines Shown were surveyed on the ground between December 16, 2009 and February 19, 2010  
Field Personnel: Sidney Bouse, Tommy Metcalf and Kyle Rodriguez

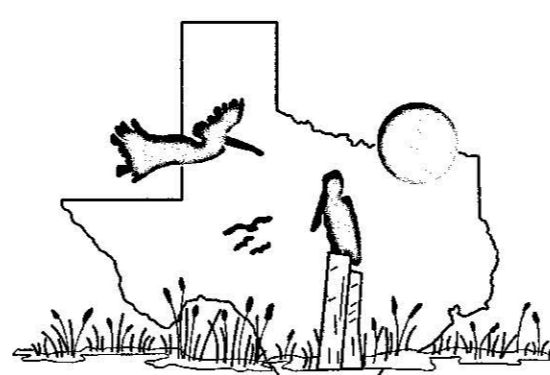
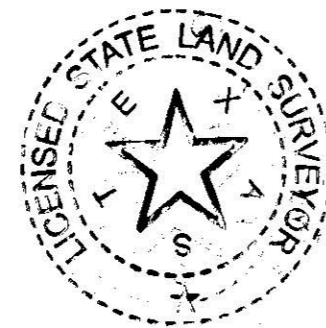
Tidal Datums at GALVESTON PIER 21, GALVESTON CHANNEL  
National Ocean Service Station ID: 8771450 based on:

LENGTH OF SERIES: 5 YEARS  
TIME PERIOD: January 1997- December 2001  
TIDAL EPOCH: 1983-2001

TEXAS GENERAL LAND OFFICE  
Art. 33.136, Natural Resources Code  
Co. Galveston, State No. 63  
File Date 02/19/2010 by S. Bouse

I hereby certify that on the below dates, the herein described property was surveyed on the ground, according to law, and that this map, together with dimensions as shown hereon, accurately represents the facts as found on the ground this date.

Sidney Bouse, LSLS  
Coastal Surveying of Texas, Inc.  
975 Lazy Lane West  
Crystal Beach, Texas 77650  
409-684-6400



COASTAL SURVEYING OF TEXAS, INC.  
GALVESTON OFFICE: 2017 HENDERSON DRIVE, GALVESTON, TX 77553  
CRYSTAL BEACH OFFICE: 975 LAZY LANE WEST, CRYSTAL BEACH, TX 77650  
PH (409) 740-1517 FX (409) 740-0377 PH (409) 684-6400 FX (409) 684-6112  
WWW.SURVEYGALVESTON.COM

McALLIS POINT ESTUARINE HABITAT  
RESORATION PROJECT  
CEPRA PROJECT No. 1481

SURVEY OF THE MEAN HIGH WATER LINE ALONG A CALLED 126.70 ACRE TRACT OR PARCEL OF LAND AS CONVEYED TO THE STATE OF TEXAS FOR THE USE AND BENEFIT OF THE PERMANENT SCHOOL FUND OUT OF DIVISION 2, SECTION 11, OF THE HALL AND JONES DISTRICT COURT PARTITION OF PART OF THE TRIMBLE AND LINDSEY SURVEY OF GALVESTON ISLAND, GALVESTON COUNTY, TEXAS.  
And being S53°18'W, 16 miles (30,326 varas) from the Galveston County Court House.

Rev. 05-19-2010
SURVEY DATE February 19, 2010
FILE No. 0121-0054-0000-000
DRAFTING sb
JOB No. 10-0049

McALLIS POINT ESTUARINE HABITAT  
RESORATION PROJECT  
CEPRA PROJECT No. 1481

APR 33 136 Galveston Co. Sheet 63

SURVEY OF THE MEAN HIGH WATER LINE ALONG A CALLED 126.70 ACRE TRACT OR PARCEL OF LAND AS CONVEYED TO THE STATE OF TEXAS FOR THE USE AND BENEFIT OF THE PERMANENT SCHOOL FUND OUT OF DIVISION 2, SECTION 11, OF THE HALL AND JONES DISTRICT COURT PARTITION OF PART OF THE TRIMBLE AND LINDSEY SURVEY OF GALVESTON ISLAND, GALVESTON COUNTY, TEXAS, SAID 126.70 ACRE TRACT DESCRIBED IN SPECIAL WARRANTY DEED AS RECORDED UNDER GALVESTON COUNTY CLERKS FILE (G.C.C.F.) No. 2006026199 GALVESTON COUNTY DEED RECORDS, GALVESTON COUNTY, TEXAS, SAID MEAN HIGH WATER LINE BEING MORE PARTICULARLY DESCRIBED BY METES AND BOUNDS AS FOLLOWS;

First Line

COMMENCING at a found 1 1/2" pipe at the intersection of the North line of FM 3005 (120' row) and the West line of Indian Beach, Section One, a subdivision in Galveston County, Texas, as recorded in Plat Record 17, Map Number 1 of the Galveston County Map Records (N 13629291.06 USSF, E 3243842.36 USSF)

THENCE N 35°05'00"W (called N 35°05'20"W), along the West line of said Indian Beach, Section One, and the East line of this tract, at a distance of 149.29 feet, passing a 4" pipe set by R.M. Sais, Galveston County Surveyor for said Partition Suit, at a distance of 2369.63 feet passing a found 1" pipe and continuing for a total distance of 2669.85 feet (961.1 varas) to the said Mean High Water line of Galveston Bay and the POINT OF BEGINNING (N 13631475.84 USSF, E 3242307.82 USSF Convergence 1° 57' 21.54515", Scale Factor 0.999967306). The site has a Scale factor of 0.999867530.

THENCE along the meanders of the Mean High Water line of Galveston Bay, the following Grid courses and distances:

- L1 S 81°01'47" W, a distance of 43.06 feet (15.5 Varas);  
N 68°39'24" W, a distance of 29.54 feet (10.6 Varas);  
S 26°26'37" W, a distance of 35.89 feet (12.9 Varas);  
S 51°21'37" W, a distance of 43.55 feet (15.7 Varas);
- L5 S 00°42'16" E, a distance of 130.32 feet (46.9 Varas);  
S 11°44'23" E, a distance of 58.94 feet (21.2 Varas);  
S 14°17'30" W, a distance of 43.84 feet (15.8 Varas);  
S 23°56'33" E, a distance of 46.43 feet (16.7 Varas);  
S 23°19'19" E, a distance of 71.93 feet (25.9 Varas);  
S 01°10'33" E, a distance of 42.44 feet (15.3 Varas);
- L10 S 18°46'55" W, a distance of 48.51 feet (17.5 Varas);  
N 77°02'11" E, a distance of 46.14 feet (16.6 Varas);  
S 07°17'55" E, a distance of 22.91 feet (8.2 Varas);  
S 43°19'15" E, a distance of 20.42 feet (7.4 Varas);
- L15 S 28°29'32" E, a distance of 17.62 feet (6.3 Varas);  
S 83°07'36" W, a distance of 19.20 feet (6.9 Varas);  
S 67°25'05" W, a distance of 31.43 feet (11.3 Varas);  
N 66°35'42" W, a distance of 45.50 feet (16.4 Varas);  
N 54°55'25" W, a distance of 92.74 feet (33.4 Varas);
- L20 N 59°38'02" W, a distance of 77.88 feet (28.0 Varas);  
N 43°39'45" W, a distance of 80.83 feet (29.1 Varas);  
N 38°39'01" W, a distance of 102.12 feet (36.8 Varas);  
N 34°52'29" W, a distance of 86.71 feet (31.2 Varas);  
N 32°05'54" W, a distance of 101.58 feet (36.6 Varas);
- L25 N 22°46'31" W, a distance of 65.00 feet (23.4 Varas);  
N 30°07'55" W, a distance of 58.73 feet (21.1 Varas);  
N 34°13'54" W, a distance of 90.42 feet (32.6 Varas);  
N 21°26'15" W, a distance of 66.01 feet (23.8 Varas);  
N 40°22'46" W, a distance of 65.54 feet (23.6 Varas);
- L30 N 28°12'22" W, a distance of 78.39 feet (28.2 Varas);  
N 14°30'34" W, a distance of 32.33 feet (11.6 Varas);  
N 16°51'42" W, a distance of 53.71 feet (19.3 Varas);  
N 49°21'14" W, a distance of 33.53 feet (12.1 Varas);  
N 57°53'37" W, a distance of 46.69 feet (16.8 Varas);
- L35 N 65°09'27" W, a distance of 78.27 feet (28.2 Varas);  
N 72°59'47" W, a distance of 61.02 feet (22.0 Varas);  
N 79°12'57" W, a distance of 93.57 feet (33.7 Varas);  
N 62°16'08" W, a distance of 68.22 feet (24.6 Varas);  
S 81°00'21" W, a distance of 54.42 feet (19.6 Varas);
- L40 N 85°53'41" W, a distance of 41.72 feet (15.0 Varas);  
S 40°50'44" W, a distance of 31.56 feet (11.4 Varas);  
S 85°42'16" W, a distance of 37.62 feet (13.5 Varas);  
S 12°01'31" W, a distance of 49.85 feet (17.9 Varas);  
S 13°08'07" E, a distance of 50.79 feet (18.3 Varas);
- L45 S 35°54'17" E, a distance of 71.27 feet (25.7 Varas);  
S 36°21'59" E, a distance of 67.88 feet (24.4 Varas);  
N 87°21'58" W, a distance of 33.49 feet (12.1 Varas);  
S 39°09'14" E, a distance of 39.72 feet (14.3 Varas);  
S 37°04'07" W, a distance of 43.32 feet (15.6 Varas);
- L50 S 68°42'38" W, a distance of 47.49 feet (17.1 Varas);  
S 42°21'16" W, a distance of 46.04 feet (16.6 Varas);  
S 60°46'59" W, a distance of 54.01 feet (19.4 Varas);  
S 46°46'44" W, a distance of 31.89 feet (11.5 Varas);  
N 64°53'46" W, a distance of 36.06 feet (13.0 Varas);
- L55 N 04°15'23" W, a distance of 39.68 feet (14.3 Varas);  
N 62°56'02" W, a distance of 34.72 feet (12.5 Varas);  
N 65°51'55" W, a distance of 41.70 feet (15.0 Varas);  
N 72°59'16" W, a distance of 49.57 feet (17.8 Varas);  
N 89°02'32" W, a distance of 59.88 feet (21.6 Varas);
- L60 S 67°18'36" W, a distance of 57.44 feet (20.7 Varas);  
S 10°51'59" W, a distance of 39.44 feet (14.2 Varas);  
S 48°45'55" E, a distance of 45.45 feet (16.4 Varas);  
S 51°01'42" E, a distance of 32.33 feet (11.6 Varas);  
S 33°54'02" E, a distance of 23.86 feet (8.6 Varas);
- L65 S 12°34'59" E, a distance of 11.26 feet (4.1 Varas);  
N 33°43'21" E, a distance of 12.26 feet (4.4 Varas);  
N 88°29'35" E, a distance of 30.65 feet (11.0 Varas);  
S 60°43'39" E, a distance of 67.51 feet (24.3 Varas);  
N 88°37'06" E, a distance of 35.17 feet (12.7 Varas);
- L70 N 51°08'19" E, a distance of 51.00 feet (18.4 Varas);  
S 04°28'13" E, a distance of 34.47 feet (12.4 Varas);  
S 18°52'21" E, a distance of 43.36 feet (15.6 Varas);  
S 52°56'27" E, a distance of 57.94 feet (20.9 Varas);  
S 43°58'50" E, a distance of 75.62 feet (27.2 Varas);
- L75 S 52°36'17" E, a distance of 66.80 feet (24.0 Varas);  
S 31°41'23" E, a distance of 52.90 feet (19.0 Varas);  
S 54°35'56" E, a distance of 76.24 feet (27.4 Varas);  
S 46°05'05" E, a distance of 50.50 feet (18.2 Varas);  
S 86°29'16" E, a distance of 20.09 feet (7.2 Varas);
- L80 S 73°51'30" E, a distance of 38.76 feet (14.0 Varas);  
S 29°37'21" E, a distance of 55.96 feet (20.1 Varas);  
S 33°26'34" E, a distance of 58.97 feet (21.2 Varas);  
S 18°44'37" E, a distance of 38.17 feet (13.7 Varas);  
S 42°26'21" E, a distance of 24.83 feet (8.9 Varas);
- L85 S 31°24'49" E, a distance of 26.17 feet (9.4 Varas);  
S 26°04'24" W, a distance of 18.70 feet (6.7 Varas);  
S 05°41'31" W, a distance of 29.72 feet (10.7 Varas);  
S 43°45'27" E, a distance of 45.23 feet (16.3 Varas);  
S 01°45'26" E, a distance of 61.34 feet (22.1 Varas);
- L90 S 00°52'26" E, a distance of 71.27 feet (25.7 Varas);  
S 16°44'44" E, a distance of 65.43 feet (23.6 Varas);  
S 27°02'35" E, a distance of 72.37 feet (26.1 Varas);  
S 12°40'04" E, a distance of 88.40 feet (31.8 Varas);  
N 39°55'00" W, a distance of 42.09 feet (15.2 Varas);
- L95 N 42°11'11" W, a distance of 69.04 feet (24.9 Varas);  
N 79°02'21" W, a distance of 36.08 feet (13.0 Varas);  
N 38°39'04" W, a distance of 23.45 feet (8.4 Varas);  
S 63°01'18" W, a distance of 32.51 feet (11.7 Varas);  
N 45°16'55" E, a distance of 32.91 feet (11.8 Varas);
- L100 N 52°28'54" W, a distance of 78.70 feet (28.3 Varas);  
S 51°58'25" W, a distance of 72.84 feet (26.2 Varas);  
N 86°38'18" W, a distance of 81.62 feet (29.4 Varas);  
S 76°18'48" W, a distance of 42.60 feet (15.3 Varas);  
S 50°21'44" W, a distance of 32.24 feet (11.6 Varas);
- L105 N 51°42'58" W, a distance of 59.48 feet (21.4 Varas);  
N 23°54'22" E, a distance of 31.76 feet (11.4 Varas);  
N 07°43'52" W, a distance of 19.92 feet (7.2 Varas);  
N 10°49'02" E, a distance of 12.18 feet (4.4 Varas);  
N 69°30'12" E, a distance of 5.09 feet (1.8 Varas);
- L110 S 71°48'02" E, a distance of 22.85 feet (8.2 Varas);  
N 76°05'14" E, a distance of 14.06 feet (5.1 Varas);  
S 56°58'15" E, a distance of 19.31 feet (7.0 Varas);  
N 79°48'30" E, a distance of 27.59 feet (9.9 Varas);  
N 31°42'10" E, a distance of 18.79 feet (6.8 Varas);
- L115 N 69°18'38" W, a distance of 15.73 feet (5.7 Varas);  
S 72°19'33" W, a distance of 23.58 feet (8.5 Varas);

Second Line

COMMENCING at a found 1 1/2" pipe at the intersection of the North line of FM 3005 (120' row) and the West line of Indian Beach, Section One, a subdivision in Galveston County, Texas, as recorded in Plat Record 17, Map Number 1 of the Galveston County Map Records (N 13629291.06 USSF, E 3243842.36 USSF)

THENCE N 35°05'00"W (called N 35°05'20"W), along the West line of said Indian Beach, Section One, and the East line of this tract, at a distance of 149.29 feet, passing a 4" pipe set by R.M. Sais, Galveston County Surveyor for said Partition Suit, at a distance of 2369.63 feet passing a found 1" pipe, and continuing for a total distance of 3658.78 feet (317.2 varas) to the said Mean High Water line of Galveston Bay and the POINT OF BEGINNING (N 13632285.10 USSF, E 3241739.41 USSF)

THENCE along the meanders of the Mean High Water line of Galveston Bay, the following Grid courses and distances:

- L300 N 67°56'25" W, a distance of 29.64 feet (10.7 Varas);  
S 83°20'59" W, a distance of 19.18 feet (6.9 Varas);  
S 41°01'31" W, a distance of 6.95 feet (2.5 Varas);  
N 81°17'17" W, a distance of 43.86 feet (15.8 Varas);  
N 21°27'39" W, a distance of 45.54 feet (16.4 Varas);
- L305 N 46°13'18" W, a distance of 122.37 feet (44.1 Varas);  
N 49°02'01" W, a distance of 57.61 feet (20.7 Varas);  
N 60°25'53" W, a distance of 30.74 feet (11.1 Varas);  
N 73°59'05" W, a distance of 62.55 feet (22.5 Varas);  
N 57°53'27" W, a distance of 44.63 feet (16.1 Varas);
- L310 N 81°00'33" W, a distance of 29.25 feet (10.5 Varas);  
N 26°37'11" W, a distance of 16.40 feet (5.9 Varas);  
N 41°25'46" W, a distance of 48.54 feet (17.5 Varas);  
N 53°15'09" W, a distance of 70.97 feet (25.5 Varas);  
N 67°19'06" W, a distance of 29.73 feet (10.7 Varas);
- L315 N 79°58'27" W, a distance of 21.97 feet (7.9 Varas);  
N 74°04'12" W, a distance of 24.17 feet (8.7 Varas);  
S 65°49'57" W, a distance of 13.91 feet (5.0 Varas);  
N 72°59'53" W, a distance of 18.33 feet (6.6 Varas);  
N 23°15'33" E, a distance of 12.65 feet (4.6 Varas);
- L320 N 10°28'44" W, a distance of 31.80 feet (11.4 Varas);  
N 33°53'36" E, a distance of 14.46 feet (5.2 Varas);  
N 26°09'55" E, a distance of 23.20 feet (8.4 Varas);  
N 70°18'45" E, a distance of 15.16 feet (5.5 Varas);  
N 68°37'47" E, a distance of 29.48 feet (10.6 Varas);
- L325 N 75°25'52" E, a distance of 24.84 feet (8.9 Varas);  
N 89°05'19" E, a distance of 48.15 feet (17.3 Varas);  
S 54°57'44" E, a distance of 46.30 feet (16.7 Varas);  
S 35°38'53" E, a distance of 20.93 feet (7.5 Varas);  
S 63°58'35" E, a distance of 30.58 feet (11.0 Varas);
- L330 S 54°03'31" E, a distance of 26.97 feet (9.7 Varas);  
S 71°54'19" E, a distance of 28.66 feet (10.3 Varas);  
N 36°59'19" E, a distance of 22.12 feet (8.0 Varas);  
N 11°09'29" W, a distance of 15.48 feet (5.6 Varas);  
N 65°44'14" E, a distance of 35.81 feet (12.9 Varas);
- L335 S 25°44'24" W, a distance of 4.63 feet (1.7 Varas);  
S 60°46'39" W, a distance of 12.37 feet (4.5 Varas);  
S 21°38'47" W, a distance of 12.56 feet (4.5 Varas);  
S 30°48'58" E, a distance of 24.48 feet (8.8 Varas);  
S 44°46'36" E, a distance of 30.13 feet (10.8 Varas);
- L340 S 50°04'51" E, a distance of 18.59 feet (6.7 Varas);  
N 89°01'45" E, a distance of 25.20 feet (9.1 Varas) returning to the East line of the said State of Texas tract and the POINT OF TERMINUS;

Third Line

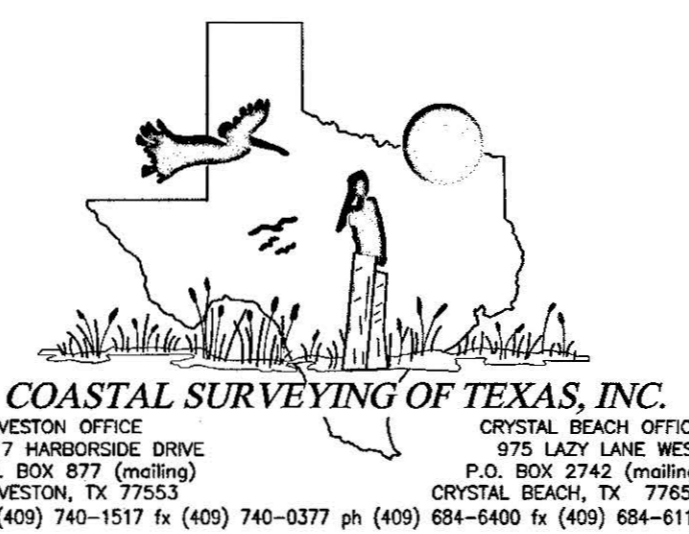
COMMENCING at a found 1 1/2" pipe at the intersection of the North line of FM 3005 (120' row) and the West line of Indian Beach, Section One, a subdivision in Galveston County, Texas, as recorded in Plat Record 17, Map Number 1 of the Galveston County Map Records (N 13629291.06 USSF, E 3243842.36 USSF)

THENCE N 40°17'58"W, a distance of 4564.84 feet (1643.3 varas) to the said Mean High Water line of Galveston Bay, said point being N 64°59'45"W, a distance of 1805.02 feet (649.8V) from COE Monument "BITCH" (N:13632009.60 USSF, E:3242525.74 USSF), and the POINT OF BEGINNING (N:13632772.55 USSF, E:3240889.90 USSF)

THENCE along the meanders of the Mean High Water line of Galveston Bay, the following Grid courses and distances:

- L400 N 39°27'27" W, a distance of 9.09 feet (3.3 Varas);  
N 09°38'27" W, a distance of 9.32 feet (3.4 Varas);  
N 29°05'32" W, a distance of 21.32 feet (7.7 Varas);  
N 01°21'17" E, a distance of 30.46 feet (11.0 Varas);  
N 09°03'12" E, a distance of 31.15 feet (11.2 Varas);
- L405 N 11°05'23" W, a distance of 13.16 feet (4.7 Varas);  
N 46°39'18" E, a distance of 13.16 feet (4.7 Varas);  
N 88°29'55" E, a distance of 4.69 feet (1.7 Varas);  
N 01°37'37" E, a distance of 11.29 feet (4.1 Varas);  
N 33°44'42" W, a distance of 11.29 feet (4.1 Varas);
- L410 N 05°12'00" W, a distance of 14.80 feet (5.3 Varas);  
N 44°25'32" W, a distance of 6.34 feet (2.3 Varas);  
N 12°47'28" W, a distance of 19.00 feet (6.8 Varas);  
N 54°24'13" W, a distance of 12.61 feet (4.5 Varas);  
N 28°05'00" W, a distance of 15.62 feet (5.6 Varas);
- L415 N 21°52'00" W, a distance of 41.37 feet (14.9 Varas);  
N 37°14'36" W, a distance of 98.14 feet (35.3 Varas);  
N 48°41'13" W, a distance of 122.16 feet (44.0 Varas);  
N 63°05'26" W, a distance of 70.47 feet (25.4 Varas);  
N 45°04'04" W, a distance of 16.65 feet (6.0 Varas);
- L420 S 84°14'23" W, a distance of 31.29 feet (11.3 Varas);  
N 46°16'52" W, a distance of 109.12 feet (39.3 Varas);  
N 50°56'53" W, a distance of 47.12 feet (17.0 Varas);  
S 54°27'19" W, a distance of 67.32 feet (24.2 Varas);  
S 25°09'30" W, a distance of 57.37 feet (20.7 Varas);
- L425 S 42°48'18" W, a distance of 76.18 feet (27.4 Varas);  
S 14°51'14" E, a distance of 47.20 feet (17.0 Varas);  
S 31°25'27" E, a distance of 22.14 feet (8.0 Varas);  
S 44°15'09" E, a distance of 60.50 feet (21.8 Varas);  
S 45°14'33" E, a distance of 108.12 feet (39.0 Varas);
- L430 S 58°52'05" E, a distance of 27.49 feet (9.9 Varas);  
S 41°59'27" E, a distance of 46.75 feet (16.8 Varas);  
S 54°35'07" E, a distance of 47.41 feet (17.1 Varas);  
S 53°23'40" E, a distance of 109.99 feet (39.6 Varas);  
S 58°01'31" E, a distance of 71.51 feet (25.7 Varas);
- L435 S 40°38'10" E, a distance of 15.92 feet (5.7 Varas);  
S 60°23'42" E, a distance of 31.11 feet (11.2 Varas);  
S 39°03'32" E, a distance of 26.96 feet (9.7 Varas);  
N 71°31'16" E, a distance of 23.44 feet (8.4 Varas);  
N 82°21'20" E, a distance of 21.27 feet (7.7 Varas);
- L440 N 73°32'01" E, a distance of 39.23 feet (14.1 Varas);  
S 85°51'45" E, a distance of 34.33 feet (12.4 Varas) to the point of beginning and continuing 3.484 acres within the meanders of this line;

TEXAS GENERAL LAND OFFICE  
M. 33-136. Natural Resources Code  
Co. Galveston, Sheet No. 63  
File Date 04/26/2018 by J. Kuyke



McALLIS POINT ESTUARINE HABITAT  
RESORATION PROJECT  
CEPRA PROJECT No. 1481  
SURVEY OF THE MEAN HIGH WATER LINE ALONG A CALLED 126.70 ACRE TRACT OR PARCEL OF LAND AS CONVEYED TO THE STATE OF TEXAS FOR THE USE AND BENEFIT OF THE PERMANENT SCHOOL FUND OUT OF DIVISION 2, SECTION 11, OF THE HALL AND JONES DISTRICT COURT PARTITION OF PART OF THE TRIMBLE AND LINDSEY SURVEY OF GALVESTON ISLAND, GALVESTON COUNTY, TEXAS.  
And being S53°18"W, 16 miles (30,326 varas) from the Galveston County Court House.



Surveying Division
Coastal Boundary Survey Approval

Project: McAllis Point Estuarine Habitat Restoration
Project No: CEPRA #1481
Project Manager: Dennis Rocha, Coastal Resources (GLO)
Surveyor: Sidney Bouse, Licensed State Land Surveyor
Description: Coastal Boundary Survey, conducted February 19, 2010, by Mr. Sidney Bouse, Licensed State Land Surveyor, along the line of Mean High Water, on the south shore of West Galveston Bay, situated northwest of FM Road 3005 and southwest of Indian Beach Subdivision, Section One, same line being a portion of the littoral boundary of the Hall & Jones District Court Partition of the Trimble & Lindsey Survey of Galveston Island, Galveston County.

A Coastal Boundary Survey for the above-referenced project has been reviewed and accepted; upon completion of public notice requirements, the survey will be filed in the Texas General Land Office, Archives and Records, in accordance with provisions of the Texas Natural Resources Code, Chapter 33.136.

Approved:

Signed: David A. Ryb
Survey Division

June 24, 2010
Date

Approval Filed as:

Tex. Nat. Res. Code Article 33.136, Galveston County Report No. 63

TEXAS GENERAL LAND OFFICE

Art. 33.136, Natural Resources Code

Co. Galveston, Sketch No. 63

File Date 06/20/2018 by R. Kerby