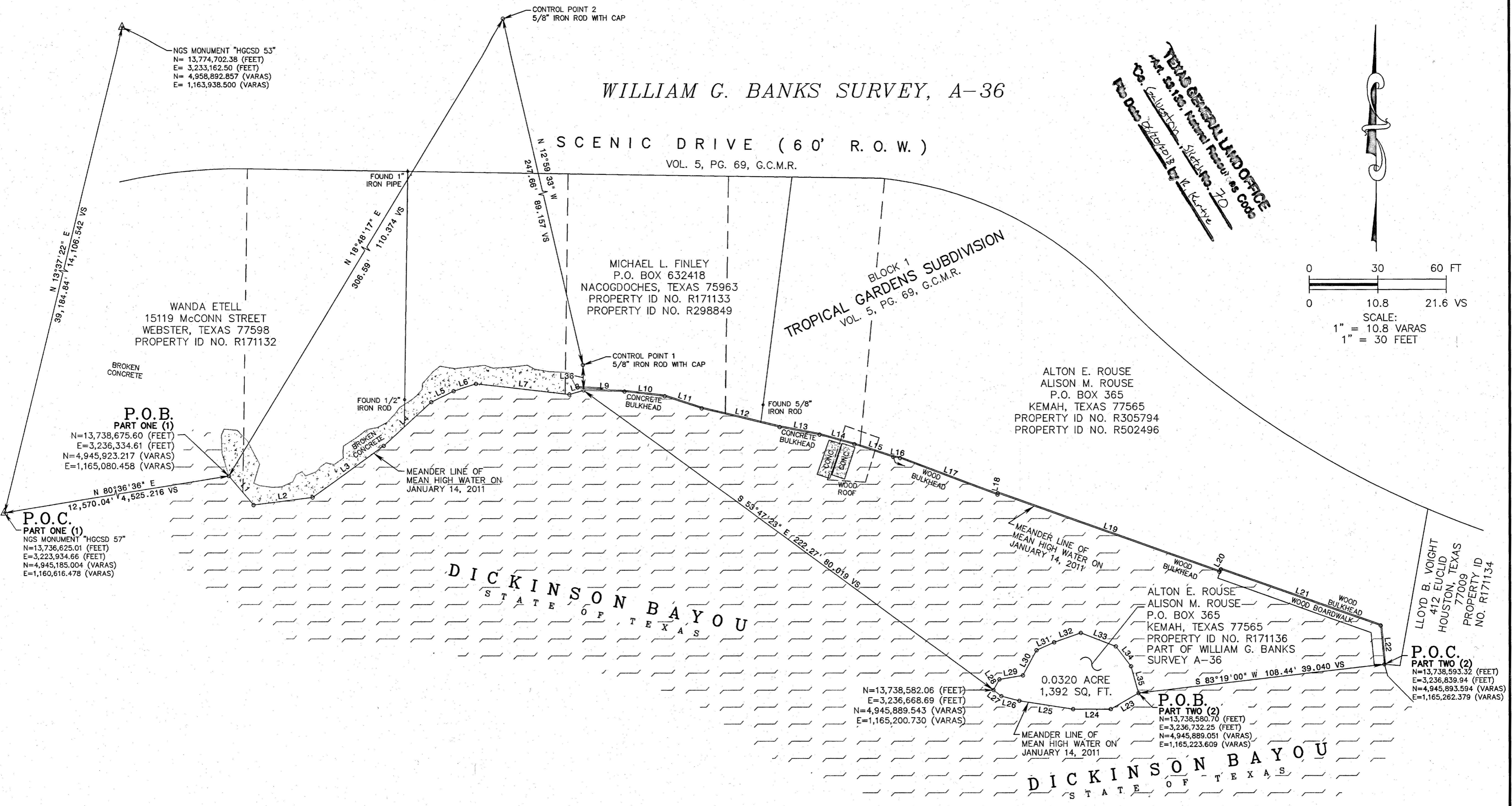
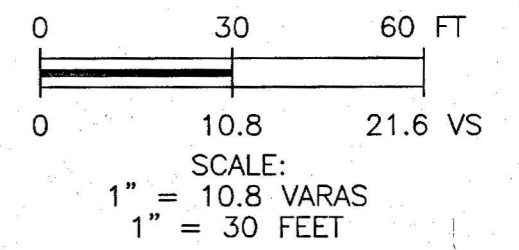


WILLIAM G. BANKS SURVEY, A-36

SCENIC DRIVE (60' R.O.W.)  
VOL. 5, PG. 69, G.C.M.R.

TEXAS GENERAL LAND OFFICE  
P.O. BOX 130, NASSAU FERRY, TEXAS 77556  
Tel: Galveston 775-3111, Houston 770-7200  
Fax: Galveston 775-3112, Houston 770-7200



LINE	Bearing	Distance Feet	Distance Varas
L1	S 40°09'08" E	16.71	6.016
L2	N 82°37'19" E	25.94	9.339
L3	N 53°52'31" E	38.43	13.835
L4	N 47°07'45" E	28.41	10.229
L5	N 63°49'36" E	10.83	3.897
L6	N 71°44'49" E	10.30	3.708
L7	S 63°33'45" E	40.97	14.750
L8	N 73°47'49" E	8.46	2.326
L9	S 88°23'07" E	17.84	6.423
L10	S 83°18'08" E	17.65	6.353
L11	S 71°40'57" E	17.03	6.132
L12	S 76°20'10" E	35.12	12.643
L13	S 79°12'32" E	17.81	6.410
L14	S 74°23'29" E	15.88	5.718
L15	S 71°51'13" E	17.91	6.447
L16	S 81°48'57" E	2.99	1.077
L17	S 69°22'18" E	45.63	16.428
L18	N 12°02'08" E	0.64	0.230
L19	S 70°31'31" E	103.03	37.091
L20	N 29°09'34" E	1.20	0.433
L21	S 70°42'40" E	74.14	26.691
L22	S 05°31'06" E	17.07	6.145
L23	S 59°48'20" W	14.06	5.063
L24	S 89°54'55" W	16.50	5.941
L25	N 81°03'13" W	23.86	8.588
L26	N 75°28'35" W	8.14	2.930
L27	N 51°52'00" W	4.40	1.583
L28	N 29°21'38" E	5.35	1.926
L29	N 80°18'12" E	10.43	3.755
L30	N 28°29'22" E	12.53	4.509
L31	N 65°39'52" E	8.49	3.055
L32	N 70°31'40" E	12.39	4.459
L33	S 68°49'06" E	16.42	5.912
L34	S 37°37'23" E	10.98	3.953
L35	S 15°27'41" E	12.23	4.404
L36	S 01°26'45" E	11.16	4.017

NOTICE:

This survey was performed in accordance with Section 33.136, Natural Resources Code, for the purpose of evidencing the location of the shoreline in the area depicted in this survey as that shoreline existed before commencement of erosion response activity, as required by Chapter 33, Natural Resources Code. The meander line depicted on this survey fixes the shoreline for the purpose of locating a shoreline boundary, subject to movement landward as provided by Section 33.136, Natural Resources Code.

NOTE:

- All coordinates and bearings shown hereon are grid values referenced to the Texas Coordinate System of 1983, South Central Zone and NGS Monument "HCSD 57". All distances shown hereon are surface distances unless noted and may be converted to grid distances by multiplying by a scale factor of 0.99986569. Mapping angle for this project is 01°56'00". Elevations are referenced to N.G.V.D. 1988 datum and NGS Monument "HCSD 57" having an elevation of 12.21'. NGVD'88, site benchmark elevations used in this project were GPS derived.
- Site Benchmark - "MUE" in Mueller on top of a fire hydrant located at the intersection of Scenic Drive and Gum Drive. Elevation=5.47' NGVD'88 (GPS Derived)
- Elevation of Mean High Water was determined by use of an on-site tide gauge adjusted to the NOAA gauge "Eagle Point". Elevation of Mean High Water water determined to be 0.84' NGVD'88 (GPS derived).
- This is an Erosion Control Project with possible bulkhead repair and/or replacement and possible grass planting.

I, William E. Merten, Licensed State Land Surveyor in and for the State of Texas, do hereby certify that on January 14, 2011, I have located the natural contour line of Mean High Water in accordance with methodology approved by the General Land Office, on the ground, according to law and with the personnel stated, and that the meander lines of said contour line are true and correct as shown hereon. To the best of my knowledge no artificial fill, any development or placement of retaining walls, other than as shown hereon, that would cause alteration to said contour line has occurred within the area surveyed.

Field Personnel:  
S. Smith - B. Yother - M. Velasquez  
*William E. Merten*  
William E. Merten  
Licensed State Land Surveyor



Field Note Description:

Being the line of Mean High Water in Two (2) parts, of Dickinson Bayou, both being along portions of the William G. Banks Survey, Abstract Number 36, Galveston County, Texas. The meander lines of said Mean High Water being more particularly described as follows (coordinates and bearings are grid values referenced to the Texas Coordinate System of 1983, South Central Zone and NGS Monuments "HCSD 53" and "HCSD 57". Distances shown are surface distances and may be converted to grid distances by multiplying by a scale factor of 0.99986569):

PART ONE (1)

COMMENCING at NGS Monument "HCSD 57" having grid coordinates of N=13,736,625.01 feet (4,945,185.004 varas) and E=3,223,934.66 feet (1,160,616.478 varas), from which NGS Monument "HCSD 53" bears North 13°37'22" East, 39,184.84 feet (14,106.542 varas);

THENCE, North 80°36'36" East, a distance of 12,570.04 feet (4,525.216 varas) to a point on the meander line of Mean High Water of Dickinson Bayou, for the POINT OF BEGINNING and westerly end of said Part One (1) meander line having grid coordinates of N=13,738,675.60 feet (4,945,923.217 varas) and E=3,236,334.61 feet (1,165,080.458 varas);

THENCE, in a generally east direction, along said meander line of Mean Higher High Water of Dickinson Bayou, the following twenty two (22) courses:

- South 40°09'08" East, a distance of 16.71 feet (6.016 varas) to an angle point;
- North 82°37'19" East, a distance of 25.94 feet (9.339 varas) to an angle point;
- North 53°52'31" East, a distance of 38.43 feet (13.835 varas) to an angle point;
- North 47°07'45" East, a distance of 28.41 feet (10.229 varas) to an angle point;
- North 63°49'36" East, a distance of 10.83 feet (3.897 varas) to an angle point;
- North 71°44'49" East, a distance of 10.30 feet (3.708 varas) to an angle point;
- South 63°33'45" East, a distance of 40.97 feet (14.750 varas) to an angle point;
- North 73°47'49" East, a distance of 8.46 feet (2.326 varas) to an angle point;
- South 88°23'07" East, a distance of 17.84 feet (6.423 varas) to an angle point;
- South 83°18'08" East, a distance of 17.65 feet (6.353 varas) to an angle point;
- South 71°40'57" East, a distance of 17.03 feet (6.132 varas) to an angle point;
- South 76°20'10" East, a distance of 35.12 feet (12.643 varas) to an angle point;
- South 79°12'32" East, a distance of 17.81 feet (6.410 varas) to an angle point;
- South 74°23'29" East, a distance of 15.88 feet (5.718 varas) to an angle point;
- South 71°51'13" East, a distance of 17.91 feet (6.447 varas) to an angle point;
- South 81°48'57" East, a distance of 2.99 feet (1.077 varas) to an angle point;
- South 69°22'18" East, a distance of 45.63 feet (16.428 varas) to an angle point;
- North 12°02'08" East, a distance of 0.64 feet (0.230 varas) to an angle point;

- South 70°31'31" East, a distance of 103.03 feet (37.091 varas) to an angle point;
- North 29°09'34" East, a distance of 1.20 feet (0.433 varas) to an angle point;
- South 70°42'40" East, a distance of 74.14 feet (26.691 varas) to an angle point;
- South 05°31'06" East, a distance of 17.07 feet (6.145 varas) to the east end of said Part One (1) meander line having grid coordinates of N=13,738,593.32 feet (4,945,893.594 varas) and E=3,236,839.94 feet (1,165,262.379 varas), same being the POINT OF COMMENCEMENT for Part Two (2).

PART TWO (2)

COMMENCING at the east end of said Part One (1) meander line having grid coordinates of N=13,738,593.32 feet (4,945,893.594 varas) and E=3,236,839.94 feet (1,165,262.379 varas);

THENCE, South 83°19'00" West, a distance of 108.44 feet (39.040 varas) to a point on the meander line of Mean High Water of an island in Dickinson Bayou, for the POINT OF BEGINNING of said Part Two (2) and for the most easterly corner of said island in Dickinson Bayou having grid coordinates of N=13,738,580.70 feet (4,945,889.051 varas) and E=3,236,732.25 feet (1,165,223.609 varas);

THENCE, in a clockwise direction, along the meander line of Mean High Water of said island in Dickinson Bayou, the following thirteen (13) courses:

- South 59°48'20" West, a distance of 14.06 feet (5.063 varas) to an angle point;
- South 89°54'55" West, a distance of 16.50 feet (5.941 varas) to an angle point;
- North 81°03'13" West, a distance of 23.86 feet (8.588 varas) to an angle point;
- North 75°28'35" West, a distance of 8.14 feet (2.930 varas) to an angle point;
- North 51°52'00" West, a distance of 4.40 feet (1.583 varas) to an angle point for the most westerly corner of said island in Dickinson Bayou, having grid coordinates of N=13,738,582.06 feet (4,945,889.543 varas) and E=3,236,668.69 feet (1,165,200.730 varas);
- North 29°21'38" East, a distance of 5.35 feet (1.926 varas) to an angle point;
- North 80°18'12" East, a distance of 10.43 feet (3.755 varas) to an angle point;
- North 28°29'22" East, a distance of 12.53 feet (4.509 varas) to an angle point;
- North 65°39'52" East, a distance of 8.49 feet (3.055 varas) to an angle point;
- North 70°31'40" East, a distance of 12.39 feet (4.459 varas) to an angle point;
- South 68°49'06" East, a distance of 16.42 feet (5.912 varas) to an angle point;
- South 37°37'23" East, a distance of 10.98 feet (3.953 varas) to an angle point;
- South 15°27'41" East, a distance of 12.23 feet (4.404 varas) to the POINT OF BEGINNING of said Part Two (2);

GLO PERMIT NO. \_\_\_\_\_

FOR GENERAL LAND OFFICE USE ONLY

Filed for record in my office, the 28<sup>th</sup> day of MARCH, 2012, at 1:00 o'clock  
A.M., and duly recorded the 28<sup>th</sup> day of MARCH, 2012, in Book I, Page 222  
of the County Surveyor's Records of Galveston County, Texas.

*Mike Fitzgerald*  
BY: *MIKE FITZGERALD*  
County Engineer, Galveston County Surveyors Records

A SURVEY OF DICKINSON BAYOU  
ADJACENT TO  
THE WILLIAM G. BANKS SURVEY  
ABSTRACT NUMBER 36  
GALVESTON COUNTY, TEXAS

CFA JOB# 1102-002-01 FB NO. 2230 DATE: 02-01-2012

**CobbFendley**  
Texas Registration No. 274  
13430 Northwest Freeway, Suite 1100 Houston, Texas 77040  
713.462.3242 | fax 713.462.3262 | www.cobbendley.com

13430 NORTHWEST FREEWAY, SUITE 1100  
HOUSTON, TEXAS 77040  
(713) 462-3242

SCALE: 1" = 30' (10.8 VARAS) SHEET 1 OF 1



**Surveying Division  
Coastal Boundary Survey Approval**

**Project:** Dickinson Bayou/Tropical Gardens Bank Stabilization

**Project No:** SL20120047, General Land Office

**Project Manager:** Jeffrey Davis, Upper Coast Regional Manager

**Surveyor:** William E. Merten, Licensed State Land Surveyor

**Description:** A Coastal Boundary Survey, dated January 14, 2011 by William E. Merten, Licensed State Land Surveyor, associated with Texas General Land Office, Lease No. SL20120047. The survey delineates the line of Mean High Water on the left bank of Dickinson Bayou, within the William G. Banks Survey, Abstract 36, in the vicinity of 4452 Scenic Drive, Tropical Gardens Subdivision and includes a privately owned island that is remnant of said Banks Survey, all situated in Galveston County.

A Coastal Boundary Survey for the above-referenced project has been reviewed and accepted; upon completion of public notice requirements, the survey will be filed in the Texas General Land Office, Archives and Records, in accordance with provisions of the *Texas Natural Resources Code*, Chapter 33.136.

Approved:

Signed: \_\_\_\_\_

*David A. Pyle*

Surveying Division

*Oct. 11, 2012*

Date

Approval Filed as:

*Tex. Nat. Res. Code* Article 33.136, Galveston County, Sketch No. 70

**TEXAS GENERAL LAND OFFICE**  
Art. 33.136, Natural Resources Code

Co. Galveston, Sketch No. 70

File Date 06/20/2012 by R. Kartve

[<<Prev Document](#)

# Texas Register

[Next Document>>](#)

AGENCY General Land Office

ISSUE 11/16/2012

ACTION Miscellaneous

## Notice of Approval of Coastal Boundary Survey

Pursuant to §33.136 of the Texas Natural Resources Code, notice is hereby given that Jerry Patterson, Commissioner of the General Land Office, approved a **coastal boundary survey** described as follows:

A **Coastal Boundary Survey**, dated January 14, 2011 by William E. Merten, Licensed State Land Surveyor, associated with Texas General Land Office, Lease No. SL20120047. The survey delineates the line of Mean High Water on the left bank of Dickinson Bayou, within the William G. Banks Survey, Abstract 36, in the vicinity of 4452 Scenic Drive, Tropical Gardens Subdivision and includes a privately owned island that is remnant of said Banks Survey, all situated in Galveston County.

This survey is intended to provide pre-project baseline information related to an erosion response activity on coastal public lands. An owner of uplands adjoining the project area is entitled to continue to exercise littoral rights possessed prior to the commencement of the erosion response activity, but may not claim any additional land as a result of accretion, reliction, or avulsion resulting from the erosion response activity.

For a copy of this survey or more information on this matter, contact Bill O'Hara, Director of the Survey Division, Texas General Land Office, by phone at (512) 463-5223, email [bill.o'hara@glo.texas.gov](mailto:bill.o'hara@glo.texas.gov), or fax (512) 475-4619.

TRD-201205750

Larry L. Laine

Chief Clerk, Deputy Land Commissioner

General Land Office

Filed: November 7, 2012

TEXAS GENERAL LAND OFFICE  
Art. 33.136, Natural Resources Code

Co. Galveston, Sketch No. 70

File Date 06/10/2018 by R. Kertye

[Next Page](#)

[Previous Page](#)

[Re-Query Register Database](#)

[Back to List](#)

[HOME](#) | [TEXAS REGISTER](#) | [TEXAS ADMINISTRATIVE CODE](#) | [OPEN MEETINGS](#) | [HELP](#) |