

PAVED ROADS - DISTANCES BETWEEN TOWNS - HOTELS

35¢

# CLASON'S TEXAS

GREEN GUIDE  
WITH ROAD AND  
RAILWAY MAPS



COMMERCIAL  
INDEX

GIVING TOWNS AND  
COUNTIES, WITH  
POPULATIONS,  
STATE INSTITUTIONS  
COLLEGES AND  
GENERAL INFORMATION

THE CLASON MAP CO. - CHICAGO - DENVER

CLASON'S  
**TEXAS**  
GREEN GUIDE

STATE AND CITY MAPS, AUTO ROAD LOGS,  
RAILROADS, COMMERCIAL INDEX OF  
TOWNS, GIVING HOTELS, INDUSTRIES,  
ALTITUDES, POPULATION, ETC.



State Capitol at Austin

INDEX

	Page		Page
Auto Mileage.....	13		
Cities and Towns.....	28	Railroads.....	24
Counties.....	26	R. R. Distances.....	64
Educational Institutions.....	25	Rivers and Creeks.....	11
Lakes.....	11	State Institutions.....	25

Published by THE CLASON MAP CO. , CHICAGO, DENVER

Copyrighted by the Clason Map Co.



Texas Is the Greatest Cotton Producing State in the Union

Photo by K. A. MERRITT  
CHICAGO



AS SEEN BY THE GREEN GUIDE

### THE LAND OF BIG OPPORTUNITIES

The largest thing in the United States is the State of Texas. The Lone Star State, as it is familiarly known, contains one-twelfth of the tillable area of the whole United States. If farmed intensively, this State could produce all the food needed by our hundred million citizens, including meat, bread, butter, milk, eggs, sugar, honey, vegetables, fruit, berries, nuts, fish, oysters and a vast assortment of other things. More than this, there is ample gas and coal within the State of Texas to cook it as well.

Texas needs more farmers to till her fertile acres, and more manufacturers to utilize the products grown here and develop the natural resources and raw materials that occur in such profusion.

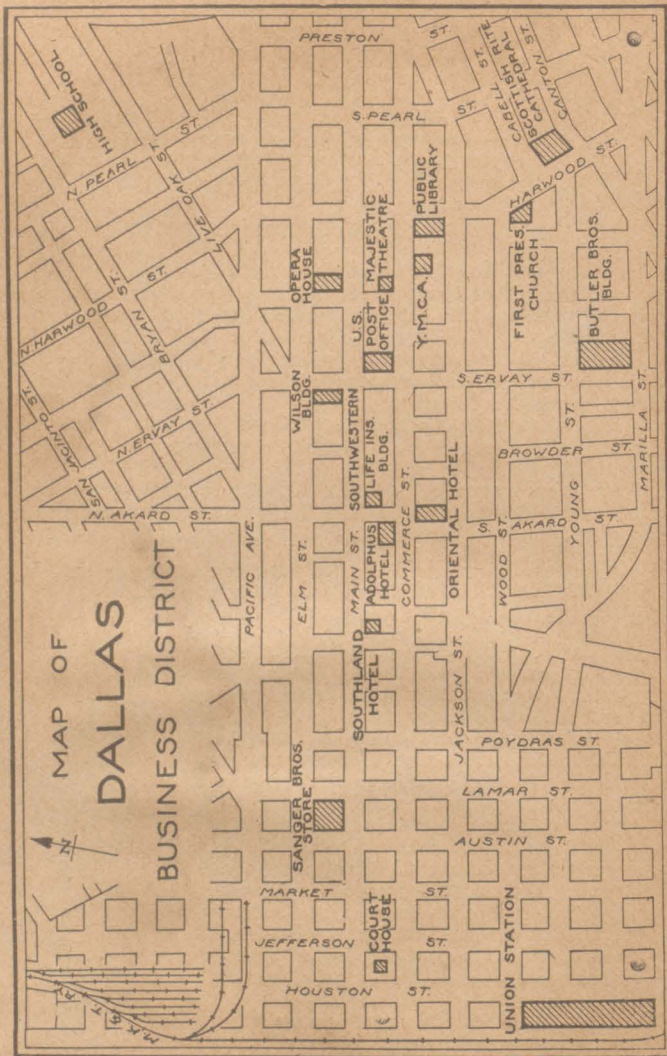
### FARM TEXAS THOROUGHLY AND EVERYONE CAN EAT

The arable lands of Texas, if thoroughly cultivated, could produce far more farm products than any other State in the Union. Already it ranks amongst the Big Three which, according to the Annual Report of the U. S. Department of Agriculture, produce annually the greatest total value of farm products. Iowa and Illinois, neither of them having over one-fifth the total area of Texas, are this State's only contenders for first place. Lack of man-power to properly cultivate its lands is the only drawback that keeps Texas from outstripping all other States in farm production.

Texas needs farmers to settle and develop the vast areas of high-grade lands now used as open cattle ranges and to intensively farm immense areas that are now cultivated only in a superficial way. To the farmer



Take a GREEN GUIDE with you, and you never will go wrong



MAP OF DALLAS BUSINESS DISTRICT  
Showing Location of Depots, Hotels and Public Buildings

who comes to Texas now the State can offer the rarest and richest crop a farmer ever has.

### THE RICHEST CROP EVER HARVESTED

Land values in many parts of Texas are comparatively low at the present time. It is demand that regulates the price of land, and when there is more land than the population can use to the best advantage, the value is naturally low in sympathy with the lack of demand. To the new settler Texas offers the most profitable harvest that any farmer ever reaped—the increase in the value of his land. This is the one crop that has made the farmer of our great farming States rich without work. There is only one such crop off the land, and the time to plant is now, and the place is Texas.

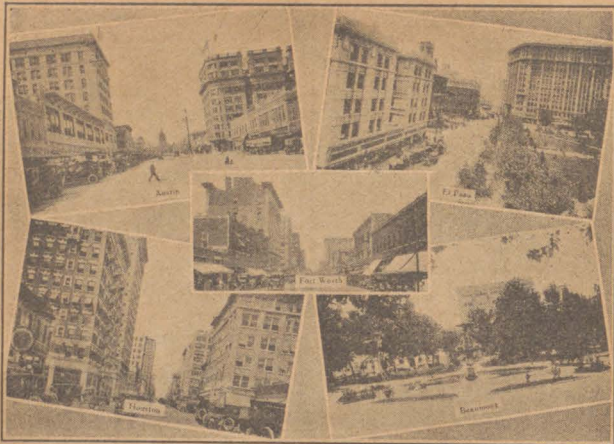
### WHERE THOSE BALMY BREEZES BLOW

Covering an area equal to the size of half a dozen States, Texas naturally has climates and climates. Along the four hundred miles of Gulf Coast, the climate is tempered to semi-tropical by the breezes off the Gulf, being warmer in winter and cooler in summer than it would otherwise be. During the winter months the Gulf Coast country is one great health resort, to which visitors come by the thousands to enjoy the luxury of the tropical winter. In the northern portions of the State, and especially in the Panhandle country, the winters are of the kind to be found in any mildly semi-temperate zone. Texas winters outside of the Gulf area include occasional snow storms, or what the natives term "northwesters." However, it can be truthfully said that Texas has no regions of arctic cold or equatorial heat, the temperature for the State in general being mild.



Photo Courtesy  
ROCK ISLAND ROUTE

Crop of Maize, Showing Results of Careful Farming in the Panhandle  
Near Dalhart



Business Districts of Leading Texas Cities

## TEXAS THE WINTER RESORT

### RECREATION AND BUSINESS FEATURES OF THE LEADING CITIES

All of the cities of central and eastern Texas are natural winter resorts to which thousands of visitors flock to avoid the northern winters. Here the visitor can stay in the open picking oranges, oleanders and roses, or bathing in the surf of the Gulf, forgetful of the zero mark on the thermometer.

There are numerous large and well-equipped resort hotels adjacent to natural playgrounds. The golf links, equal to the best in the country, are kept in condition for use every day in the year. For those who enjoy yachting, the land-locked bays along the coast offer

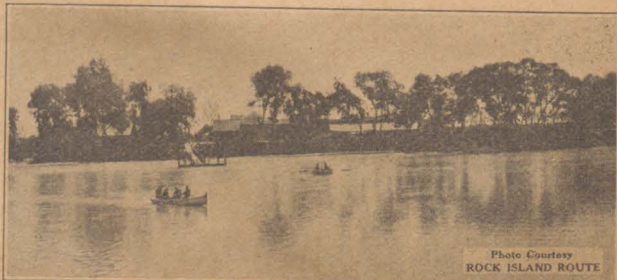


Photo Courtesy  
ROCK ISLAND ROUTE

The Rio Grande, International Boundary Between the United States and Mexico

ideal courses. Surf bathing and the finest of fishing can be enjoyed all the year. Game birds in unbelievable quantities, geese, ducks, quail and snipe, make their winter homes here.

**DALLAS.**—The largest city of the State and one of the liveliest, most up-to-date towns on earth is Dallas, on the Trinity River. Here is a modern little city with sky-scrapers of the latest designs, fine theaters, country clubs, golf courses, parks, boulevards, colleges and everything else that most any other city can boast of.

Dallas is the great jobbing center of the State. It is the commercial hub of Texas. Here are several hundred factories. Here is a great inland cotton market. Here, also, is the cordial handshake of friendship and the true spirit of southern hospitality.

Good hunting and fishing are to be had near Dallas. Newly surfaced highways offer alluring drives through the wonderful farming country surrounding the city. Dallas is a cosmopolitan winter resort in every sense of the word.

**HOUSTON.**—One of the commercial cities of Texas is Houston, located but fifty miles from the Gulf. Here is an important railroad center, with manufacturing as its greatest asset. Lumber, oil, rice and cotton are the important industries, backed up by a large jobbing trade.

Houston is also a modern, up-to-date city, with many sky-scrapers, fine hotels, shops and theaters. It has a ship channel connecting with the Gulf, making it a shipping port.

Houston offers many interests to the winter visitor. It is known as the city of flowers, and this stands for a great deal along the Gulf Coast, where flowers are so abundant. There is a good eighteen-hole golf course at one of the most attractive country clubs of the South. Good duck and wild turkey hunting can be had nearby. The shell roads, fine and plentiful, winding through parks and woods, are a joy to the automobilist. Excellent hotel accommodations are provided for the visitor.

The battle of San Jacinto was fought at Houston and the battlefield is now a State park. In this battle, General Sam Houston, bitter with the remembrance of the massacre of his comrades at the Alamo and Mission Goliad, attacked on April 21, 1836, the superior forces of Santa Ana and completely annihilated them and freed Texas from Mexican domination forever.

**SAN ANTONIO.**—Here is a land of perpetual springtime where

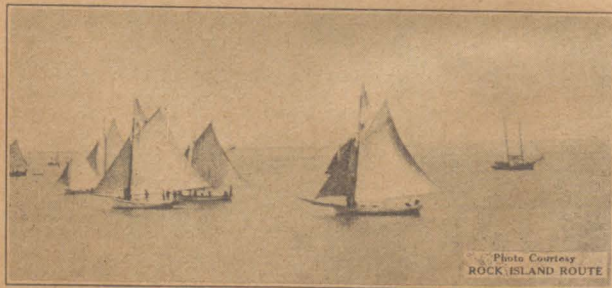


Photo Courtesy  
ROCK ISLAND ROUTE

Yachting on Galveston Bay

roses bloom in winter and where palms and semi-tropical fruits can be found in abundance. San Antonio is liberally supplied with first class hotels, where the tourist can be sure of bright social life. It is a far-famed health resort, with many curative sulphur wells.

While San Antonio is quite a way from the coast, it is not far from Medina Lake, a considerable sized body of water between towering cliffs, that will appeal to all who love good bass fishing.

San Antonio is located in a farming and stock raising district and is quite a commercial and railroad center. The winter visitor will find a modern city with a variety of amusements and numerous places of scenic and historic interest to visit.

The Alamo, shrine of Texas patriotism, stands in the center of the city. Here Bowie, Crockett and Travis, with less than two hundred men, stood out to the bitter end against a force of four thousand Mexicans, and with their lives helped pay the price of Texas liberty in 1836.

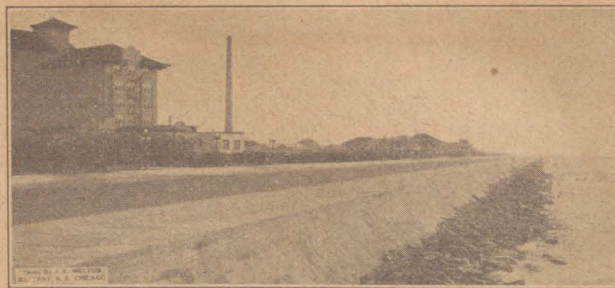
In the vicinity of San Antonio are the picturesque ruins of several Franciscan missions built about 1700. Many of these are still in a remarkable state of preservation. Most wonderful of these is Mission San Jose, built in 1720. Its ruined walls, cloisters and towers, its statuary and carving, are ranked among the finest examples of Spanish art and architecture.

**FORT WORTH.**—In the cattle and oil country of northern Texas is the city of Fort Worth, which commends itself to tourists by reason of its genial climate and many points of interest. In the early days it was the big cow town. It is still the big cow town, but now in the sense of a modern market for livestock. In the early days of March each year, the city holds a livestock show that brings forth the best blooded horses, cattle and other livestock that have replaced the longhorns and cow ponies of pioneer days.

Fort Worth is a busy modern city with wonderful boulevards along the Trinity River and around Lake Worth. It has a number of



Downtown in Dallas



Note the Curve of the Famous Galveston Sea Wall, Which Throws Waves Up and Back

modern hotels. The mean annual temperature is 65 degrees, snow rarely falls and the freezing point is seldom reached.

**GALVESTON.**—The great Gulf port of Texas is located on an island. Surrounded by the warm waters of the Gulf Stream, the pleasure seeker in Galveston may spend the entire time out of doors.

Salt-water fishing as fine as offered anywhere can be enjoyed here. Tarpon, Spanish mackerel, speckled trout, redfish, pompano, all are here and in fighting trim. Hunting will be found on a short auto trip into the mainland to the heart of the quail and jacksnipe country. Deer and bear hunting may be had at no great distance.

Galveston County, with its two hundred miles of shell-surfaced roads and thirty miles of hard packed beach, offers real bliss for the motorist. Along the beach there is no speed limit.

To accommodate the constantly increasing winter visitors, Galveston has an assortment of modern hotels, suited to all tastes and all pocketbooks.

**CORPUS CHRISTI.**—Overlooking the broad expanse of Corpus Christi Bay is the city of Corpus Christi, the Naples of the Gulf, endowed by nature as a health and pleasure resort. Corpus Christi knows none of the rigors of a northern clime. Here the winters are always mild and open.

The city is well equipped with good hotels and rooming houses. In addition to these are hundreds of cozily furnished cottages to be had at reasonable rentals. Golfing, motoring, boating, fishing and bathing are among the daily recreations.

Motoring to the inland country is a favorite trip. A new two-mile causeway, spanning Nueces Bay, provides a splendid auto road to Rockport, Aransas Pass and nearby points.

**BEAUMONT.**—In 1900, when 20,000-barrel gushers began spouting on Spindle Top, Beaumont became world-famous in a day. The oil industry is represented now by four large refineries. The climate of Beaumont is similar to that of the other Gulf Coast resorts. Fishing, boating, hunting, motoring, golf and surf bathing are all available. Duck, geese, quail and other game abound. In the Big Thicket, twenty miles away, is still greater excitement for the hunter. Here can be found turkeys bear and other large game.

There are more than a hundred miles of hard-surfaced roads near the city. Hotels provide ample accommodations.



Winter Time at Corpus Christi

**PORT ARTHUR.**—Although one of the newest of the southern seaports, the docks and shipping facilities of Port Arthur make it one of the largest and most complete along the Gulf Coast. It is not located on the Gulf itself, but on Lake Sabine, and connected with the Gulf by a deep waterway.

Being also connected with the adjacent oil fields by pipe-lines, Port Arthur ships vast quantities of oil to all parts of the world. The rice and lumber industries are important.

Port Arthur has a climate that is the delight of the winter visitor and ideal for all outdoor sports. Here will be found excellent fishing, boating, bathing, tennis and golf. Plenty of hotel accommodations.

**WACO.**—In central Texas is the busy commercial city of Waco, built on the site of an old Indian village of the same name. Waco is an important jobbing and railroad center. It is considered one of the prettiest cities in the State and is noted for the number and beauty of its parks.

There is bathing and boating in the Bosque and Brazos Rivers, which flow together just outside the city. There is a good golf course, excellent roads and many other things that please the visitor.

The Texas Cotton Palace Exposition is held here during November of each year, continuing for two weeks.

**AUSTIN.**—The capital of the Lone Star State is Austin. The state house building is considered one of the finest buildings in the country and among the largest of the nation's public buildings. Here will be found the State Library and an extensive State Museum, with a liberal collection of historic relics.

Travis County has a thousand miles of excellent automobile roads. Lake Austin and the Colorado River give ample opportunity for bathing, boating and fishing. Austin enjoys a delightful winter climate. The hotel accommodations are of the best.

**EL PASO.**—The metropolis of western Texas is El Paso, the gateway city, located where Texas, New Mexico and Old Mexico join. El Paso is an important railway terminal, the headquarters for the mining interests of this section and a military headquarters. Just across the Rio Grande, which is bridged here, is the quaint, bedraggled old Mexican town of Juarez. A short street car ride takes the visitor from the modern American city, with its beautiful parks and buildings, into this town of adobe huts typical of the primitive life just across our border.

El Paso has short, dry winters and the many parks and plazas are pleasant loafing places. There are many fine hotels and an eighteen-hole golf course. Near El Paso is the wonderfully fertile irrigated district of the Rio Grande Valley.

**MARLIN.**—Thirty miles south of Waco is Marlin, the water of whose hot mineral wells possesses exceptional medicinal qualities. Modern sanitariums, hotels and bath-houses will be found here. There is fishing in the Brazos River and many beauty spots along its banks.

The city is on various State and National highways, so enjoys good roads. Here each spring come the New York Giants to prepare for the pennant race.

**MINERAL WELLS.**—A noted health resort is Mineral Wells, fifty-three miles west of Fort Worth. Nestling between two mountains and spreading out into the adjacent valleys about one thousand feet above sea level, it offers the tourist in addition to the benefits of its medicinal waters, a delightful climate and many forms of recreation.

Tennis, horseback riding and hunting are among the many sports. There is a country club with a nine-hole golf course.

**BROWNSVILLE.**—The historic city of Brownsville enjoys the distinction of being located at the most southern point in the western United States. It is an interesting combination of Spanish and American customs and inhabitants. There are good auto roads here, interesting irrigated land districts to see with boating, fishing and many things of general interest to see and do.

## LAKES

Agua Negra.....G-1	Sabine.....W-9	Tahoka.....H-6
Caddo.....V-3	Salt.....H-4	Toyah.....F-3
Cunningham.....H-3	Salt.....F-5	
Ombliga.....H-3	Shaffer.....G-3	

## RIVERS AND CREEKS

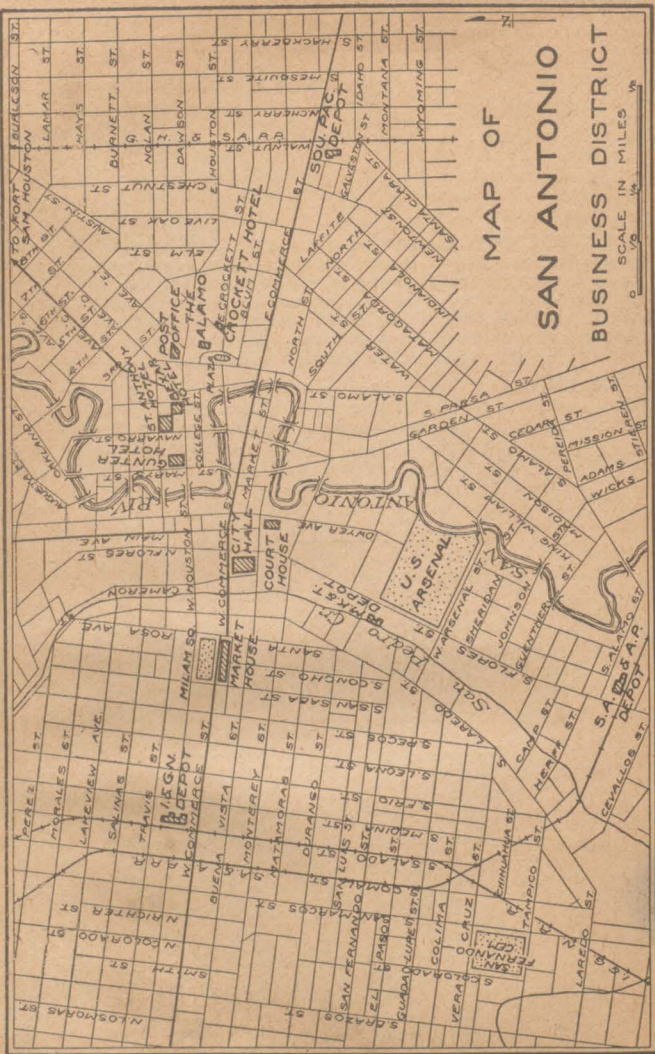
Angelina R.....U-6	Guadalupe R.....Q-11	PECOS R.....H-7
Aransas R.....P-12	Howards Cr.....J-8	Pedernales R.....N-8
Atascosa R.....O-11	Lampasas R.....P-7	Prairie Dog Fk.....C-4
Big Cypress Cr.....U-3	Lavaca R.....R-11	RED R.....S-1
Bosque R.....P-5	Leon R.....P-6	RIO GRANDE.....M-13
Brady Cr.....M-7	Leona R.....M-10	Sabanna R.....N-4
BRAZOS R.....S-3	Little R.....Q-7	Sabine R.....W-8
Canadian Cr.....B-2	Little Wichita R.....Q-2	Salt Fk.....J-1
Cibola Cr.....P-11	Llano R.....N-15	San Antonio R.....P-12
Clear Fk.....N-3	Los Olmos.....N-15	San Bernardo R.....S-10
COLORADO R.....O-8	Maravilla Cr.....F-10	San Gabriel R.....Q-7
Concho R.....K-6	Navidad R.....R-10	San Jacinto R.....O-3
Cowhouse Cr.....P-6	Navosota R.....R-6	San Marcos R.....O-8
Devils R.....K-9	Neches R.....V-3	San Saba R.....N-9
Double Mt. Fk.....K-3	Nueces R.....O-12	Sulphur R.....V-6
Elm Cr.....Q-2	Pease R.....M-1	Trinity R.....U-2
Frio R.....O-12	Pecan B.....N-5	Wichita R.....N-1
Girauds Cr.....K-5	Pecan Cr.....R-5	Yegua Cr.....Q-8

## AUTOMOBILE ROAD SECTION

### IMPROVING THE BYWAYS

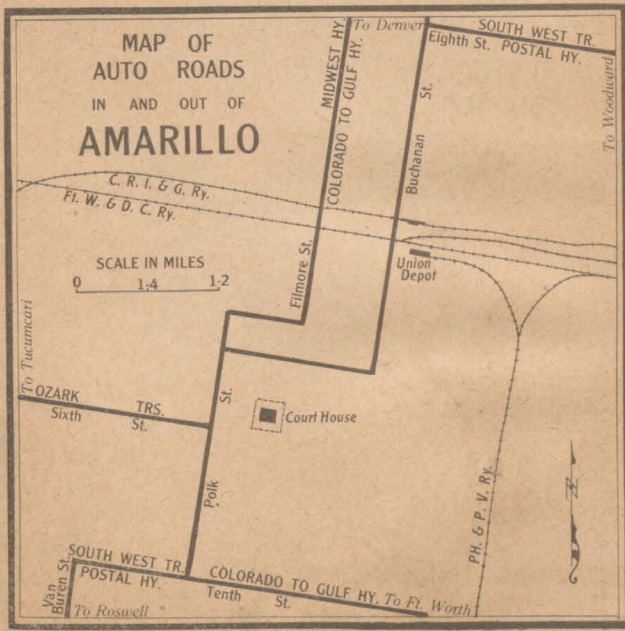
Considering its great size, Texas is already fairly well supplied with surfaced roads. In the southern part of the State shells are used and many miles of fine boulevards are surfaced with this material. Through the northern part, and especially in the black land belt, roads are being surfaced with gravel, and in some cases with bituminous material. In Western Texas the abundance of gravel and rock makes it possible to have good roads without an excessive burden on the taxpayers in this sparsely settled region. The dry climate insures the permanency of these roads.

In planning cross-state trips it is always wise to select the through routes, as indicated in the following logs and by the names and more pronounced marking on the accompanying map. These are the main traveled routes and receive more care. Supply and repair stations can also be found at more frequent intervals along these routes.



MAP OF  
SAN ANTONIO  
BUSINESS DISTRICT  
SCALE IN MILES

MAP OF SAN ANTONIO BUSINESS DISTRICT  
Showing Locations of Depots, Hotels and Public Buildings



MAP OF  
AUTO ROADS  
IN AND OUT OF  
AMARILLO

SCALE IN MILES



Atlantic-Pacific Hy. (Hy. No. 56)—Guymon, Okla., to Tucumcari, N. M.

0	0	Guymon, Okla.	167	74	32	Dalhart, Tex.	93
22	22	Texhoma, Tex.	145	120	46	Nara Visa, N. M.	47
42	20	Stratford	125	167	47	Tucumcari	0

Bankhead Highway (Hy. No. 1) Texarkana to El Paso.

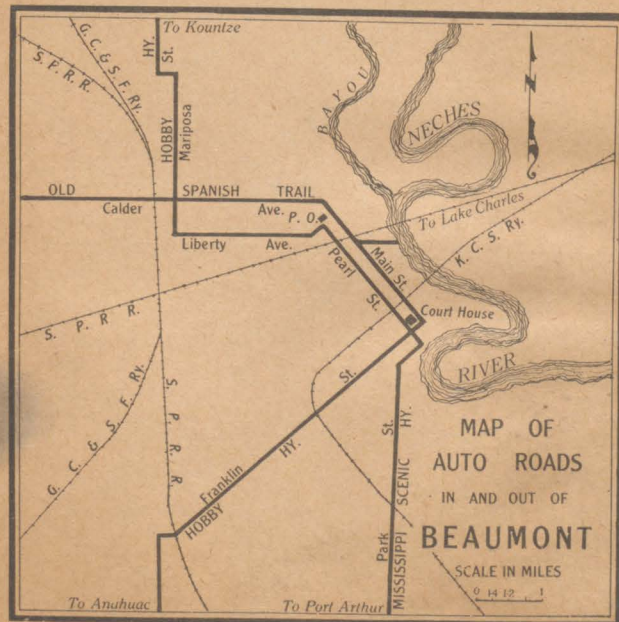
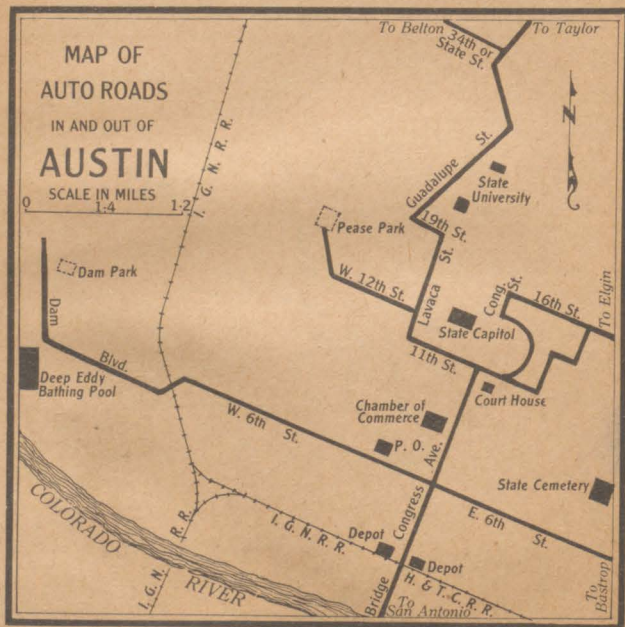
0	0	TEXARKANA	867	331	14	RANGER	536
31	31	Douglassville	836	342	11	EASTLAND	525
51	20	Naples	816	352	10	Cisco	515
71	20	Mt. Pleasant	796	379	27	Baird	488
88	17	Mt. Vernon	779	402	23	ABILENE	465
113	25	Sulphur Springs	754	419	17	Merkel	448
128	15	Cumby	739	450	31	Sweetwater	417
143	15	GREENVILLE	724	459	9	Roscoe	408
162	19	Royce City	705	480	21	Colorado	387
171	9	Rockwall	696	521	41	Big Spring	346
183	12	Garland	684	542	21	Stanton	325
198	15	DALLAS	669	561	19	Midland	306
211	13	Grand Prairie	656	581	20	Odessa	286
218	7	Arlington	649	648	67	Barstow	219
232	14	FT. WORTH	635	655	7	Pecos	212
261	29	Weatherford	606	675	20	Toyah	192
283	22	Mineral Wells	584	745	70	Van Horn	122
295	12	Palo Pinto	572	778	33	Sierra Blanca	89
317	22	Strawn	550	867	89	EL PASO	0

Central Texas Highway—El Paso to Shreveport, La.

0	0	EL PASO	888	516	23	Brownwood	372
89	89	Sierra Blanca	799	546	30	Comanche	342
122	33	Van Horn	766	568	22	Dublin	320
197	75	Balmorhea	691	582	14	Stephenville	306
250	53	Ft. Stockton	638	614	32	Granbury	274
275	25	Garvin	613	654	40	FT. WORTH	234
305	30	Rankin	583	688	34	DALLAS	200
335	30	Big Lake	553	710	22	Forney	178
355	20	Barnhart	533	725	15	Terrell	163
381	26	Mertzon	507	741	16	Wills Pt.	147
383	2	Sherwood	505	759	18	Grand Saline	129
409	26	SAN ANGELO	479	772	13	Mineola	116
446	37	Ballinger	442	822	50	Longview	66
484	38	Coleman	404	846	24	MARSHALL	42
493	9	Santa Anna	395	888	42	SHREVEPORT	0

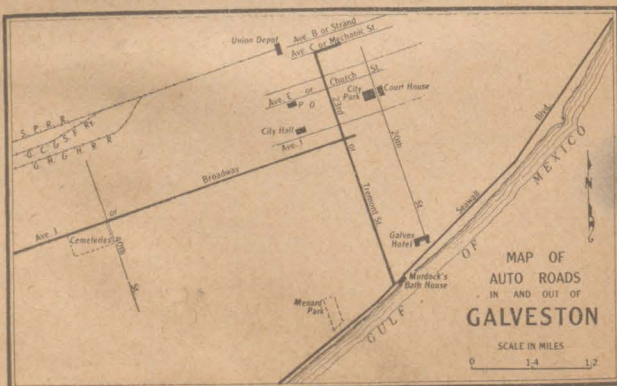
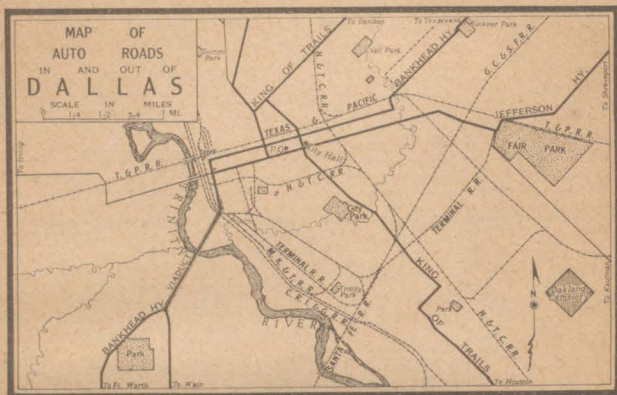
Colorado to Gulf Highway (Hys. Nos. 2 and 5) Ft. Worth to Raton, N. M.

0	0	FT. WORTH	616	241	32	Childress	375
41	41	Decatur	575	279	38	Memphis	337
55	14	Alvord	561	309	30	Clarendon	307
73	18	Bowie	543	340	31	Claude	276
104	31	Henrietta	512	370	30	AMARILLO	246
123	19	WICHITA FALLS	493	431	61	Channing	185
134	11	Iowa Park	482	462	31	Dalhart	154
151	17	Electra	465	499	37	Texline, Tex.	117
175	24	Vernon	441	513	14	Clayton, N. M.	103
192	17	Chillicothe	424	616	103	Raton	0
209	17	Quannah	407				



Colorado to Gulf Hy. and Meridian Hy. (Hys. Nos. 6 and 2) Ft. Worth to Galveston.

0	0	FT. WORTH	341	155	17	Calvert	186
28	28	Alvarado	318	163	8	Hearne	178
39	11	Grandview	302	186	23	Bryan	155
47	8	Itasca	294	191	5	College Sta.	150
58	11	Hillsboro	283	214	23	Navasota	127
73	15	West	268	238	24	Hempstead	103
91	18	WACO	250	289	51	HOUSTON	52
118	27	Marlin	223	341	52	GALVESTON	0
138	20	Bremond	203				

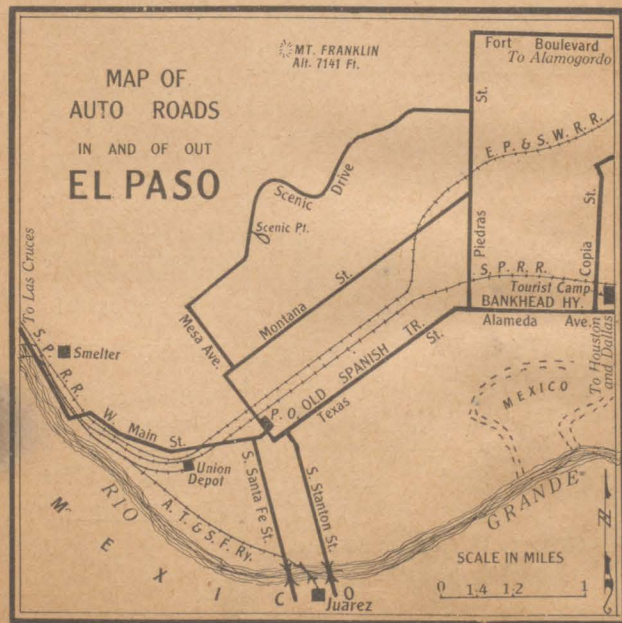


Dallas-Canadian-Denver Highway—Galveston to Ardmore, Okla., and Guymon, Tex.

0	0	GALVESTON	876	293	16	Ferris	583
52	52	HOUSTON	824	313	20	DALLAS	563
92	40	Conroe	784	341	28	Lewisville	535
100	8	Willis	776	356	15	Denton	520
124	24	Huntsville	752	368	12	Sanger	508
154	30	Madisonville	722	389	21	Gainesville, Tex.	487
176	22	Centerville	700	437	48	ARDMORE, Okla.	439
191	15	Buffalo	685	544	107	Lawton, Okla.	332
211	20	Fairfield	665	761	217	Canadian, Tex.	115
229	18	Streetman	647	814	53	Perryton, Tex.	62
251	22	CORSICANA	625	876	62	Guymon, Okla.	0
277	26	Ennis	599				

Dallas-Canadian-Denver Hy. and Del Rio Canadian Hy.—Canadian to Del Rio. Mileage approximate south of Childress.

0	0	Canadian	526	220	35	Aspermont	306
32	32	Mobeetie	494	255	35	Roby	271
45	13	Wheeler	481	275	20	Sweet Water	251
62	17	Shamrock	464	330	55	Robert Lee	196
89	27	Wellington	437	360	30	SAN ANGELO	166
124	35	Childress	402	405	45	Eldorado	121
154	30	Paducah	372	426	21	Sonora	100
185	31	Guthrie	341	526	100	DEL RIO	0



Dixie Overland Highway—Shreveport, La., to Roswell, N. M.

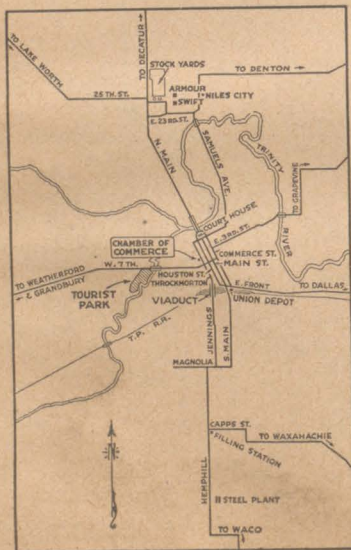
0	0	SHREVEPORT, La.	758	298	23	Mineral Wells	460
43	43	MARSHALL, Tex.	715	352	54	Breckenridge	406
66	23	Longview	692	378	26	Albany	380
106	40	Tyler	652	420	42	ABILENE	338
159	53	Wills Point	599	464	44	Sweetwater	294
174	15	Terrell	584	472	8	Roscoe	286
189	15	Forney	569	509	37	Snyder	249
211	22	DALLAS	547	553	44	Post	205
231	20	Arlington	527	581	28	Tahoka	177
244	13	FT. WORTH	514	611	30	Brownfield	147
275	31	Weatherford	483	646	35	Plains, Tex.	112
				758	112	ROS WELL, N. M.	0

East Texas Highway or Highway No. 8—Port Arthur to New Boston.

0	0	PORT ARTHUR	323	169	18	San Augustine	159
20	20	BEAUMONT	305	192	23	Center	136
45	25	ORANGE	283	222	30	Carthage	106
74	29	Buna	254	252	30	MARSHALL	76
96	22	Kirbyville	232	268	16	Jefferson	60
117	21	Jasper	211	288	20	Linden	40
135	18	Brookeland	193	303	15	Douglasville	25
151	16	Bronson	177	328	25	New Boston	0

Austin to Houston

0	0	AUSTIN	177	127	69	Hempstead	50
26	26	Elgin	151	177	50	HOUSTON	0
58	32	Giddings	119				



MAP OF  
AUTO ROADS  
in and out of  
FORT WORTH

Courtesy Ft. Worth  
Chamber of Commerce

Scales in Miles

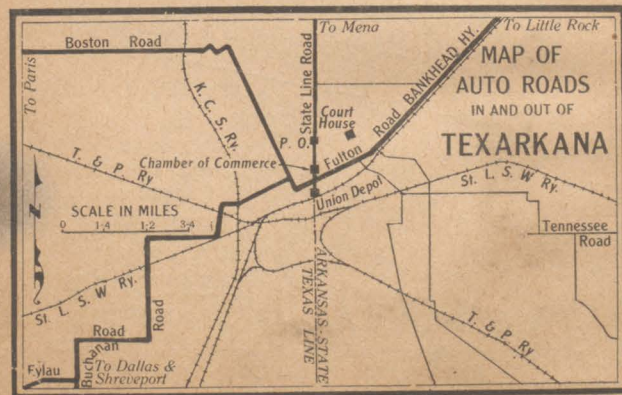


Glacier to Gulf Highway (Hys. 9, 16 and 12)—Amarillo to Brownsville.

0	0	AMARILLO	931	607	32	Floresville	324
22	22	Canyon	909	632	25	Karnes City	299
62	40	Tulia	869	638	6	Kenedy	293
90	28	Plainview	841	670	32	Beeville	261
145	55	Lubbock	786	700	30	Sinton	231
175	30	Tahoka	756	726	26	CORPUS CHRISTI	205
207	32	Lamesa	724	759	33	Bishop	172
262	55	Big Spring	669	766	7	Kingsville	165
311	49	Sterling City	620	804	38	Falfurrias	127
354	43	SAN ANGELO	577	868	64	Edinburg	63
398	44	Eden	533	875	7	Pharr	56
431	33	Brady	500	883	8	Donna	48
461	30	Mason	470	893	10	Mercedes	38
504	43	Fredericksburg	427	906	13	Harlingen	25
530	26	Waring	401	912	6	San Benito	19
543	13	Boerne	388	931	19	BROWNSVILLE	0
575	32	SAN ANTONIO	356				

King of Trails—Dallas to San Antonio and Brownsville.

0	0	DALLAS	657	407	11	Skidmore	250
15	15	Lancaster	642	425	18	Sinton	232
31	16	Waxahachie	626	441	16	Gregory	216
47	16	Italy	610	452	11	CORPUS CHRISTI	205
68	21	Hillsboro	589	469	17	Robstown	188
84	16	West	573	485	16	Bishop	172
102	18	WACO	555	492	7	Kingsville	165
140	38	TEMPLE	517	507	15	Riviera	150
165	25	Bartlett	492	512	5	Sarita	145
171	6	Granger	486	530	18	Falfurrias	127
183	12	Taylor	474	594	64	Edinburg	63
219	36	AUSTIN	438	601	7	Pharr	56
252	33	San Marcos	405	603	2	San Juan	54
270	18	New Braunfels	387	609	6	Donna	48
301	31	SAN ANTONIO	356	613	4	Weslaco	44
333	32	Floresville	324	619	6	Mercedes	38
358	25	Karnes City	299	632	13	Harlingen	25
364	6	Kenedy	293	638	6	San Benito	19
396	32	Beeville	261	657	19	BROWNSVILLE	0



King of Trails—Galveston to Durant, Okla.

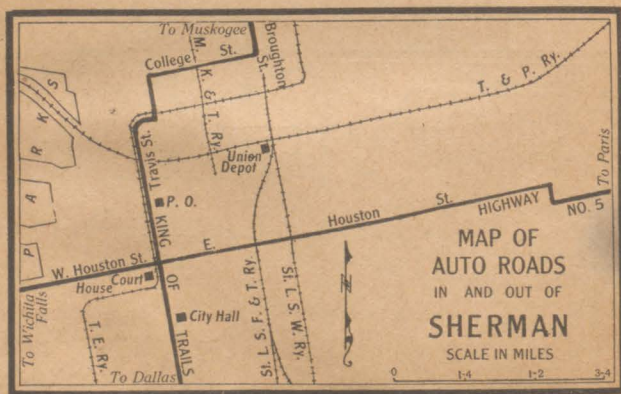
0	0	GALVESTON	453	303	21	Italy	158
51	51	HOUSTON	402	319	16	Waxahachie	134
101	50	Hempstead	352	335	16	Lancaster	110
125	24	Navasota	328	350	15	DALLAS	104
154	29	Bryan	299	369	19	Plano	83
178	22	Hearne	277	384	15	McKinney	69
185	9	Calvert	268	402	18	Van Alstyne	51
220	35	Marlin	233	420	18	SHERMAN	33
248	28	WACO	205	420	10	DENISON	23
266	18	West	187	453	23	Durant	0
282	16	Hillsboro	171				

King of Trails—Houston to San Antonio via Kenedy.

0	0	HOUSTON	272	162	18	Cuero	110
22	22	Sugar Land	250	180	18	Yorktown	92
30	8	Richmond	242	197	17	Runge	75
34	4	Rosenberg	238	209	12	Kenedy	63
68	34	Eagle Lake	204	215	6	Karnes City	57
84	16	Columbus	188	240	25	Floresville	32
125	41	Hallettsville	147	272	32	SAN ANTONIO	0
144	19	Yoakum	128				

Lone Star Route (Hys. 3 and 12)—Orange to Beeville.

0	0	ORANGE	295	173	28	Wharton	122
24	24	BEAUMONT	271	187	14	El Campo	108
69	45	Liberty	226	214	27	Edna	81
112	43	HOUSTON	183	240	26	Victoria	55
134	22	Sugar Land	161	266	26	Goliad	29
142	8	Richmond	153	295	29	Beeville	0
145	3	Rosenberg	150				

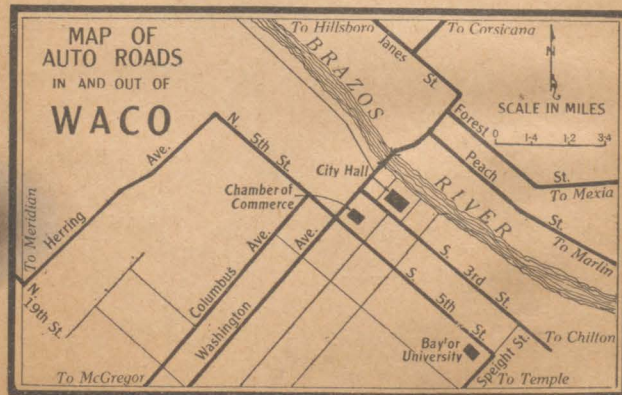


Meridian Highway (Hy. No. 2)—Laredo to Ft. Worth and Chickasha, Okla.

0	0	LAREDO	639	289	5	Bartlett	350
38	38	Encinal	601	314	25	TEMPLE	325
66	28	Cotulla	573	332	18	Bruceville	307
83	17	Dilley	556	352	20	WACO	287
99	16	Pearsall	540	370	18	West	269
120	21	Devine	519	385	15	Hillsboro	254
130	10	Lytle	509	396	11	Itasca	243
153	23	SAN ANTONIO	486	404	8	Grandview	235
155	2	Ft. Sam Houston	484	415	11	Alvarado	224
184	29	New Braunfels	455	443	23	FT. WORTH	196
202	18	San Marcos	437	484	41	Decatur	155
212	10	Kyle	427	498	14	Alvord	141
234	22	AUSTIN	405	516	18	Bowie	123
252	18	Round Rock	387	536	20	Ringgold, Tex.	103
262	10	Georgetown	377	566	30	Waurika, Okla.	73
284	22	Granger	355	639	73	CHICKASHA	0

Old Spanish Trail—Orange to San Antonio and El Paso.

0	0	ORANGE	935	396	10	Center Pt.	539
24	24	BEAUMONT	911	407	11	Kerrville	528
69	45	Liberty	866	464	57	Junction	471
112	43	HOUSTON	823	484	20	Roosevelt	451
142	30	Richmond	793	529	45	Sonora	406
145	3	Rosenberg	790	567	38	Ozona	368
179	34	Eagle Lake	756	612	45	Sheffield	323
195	16	Columbus	740	685	73	Ft. Stockton	250
211	16	Weimar	724	738	53	Balmorhea	197
219	8	Schulenburg	716	775	37	Kent	160
234	15	Flatonia	701	813	38	Van Horn	122
246	12	Waelder	689	846	33	Sierra Blanca	89
266	20	Gonzales	669	905	59	Fabens	30
302	36	Seguin	633	913	8	Clint	22
337	35	SAN ANTONIO	598	922	9	Ysleta	13
369	32	Boerne	566	935	13	EL PASO	0
386	17	Comfort	549				



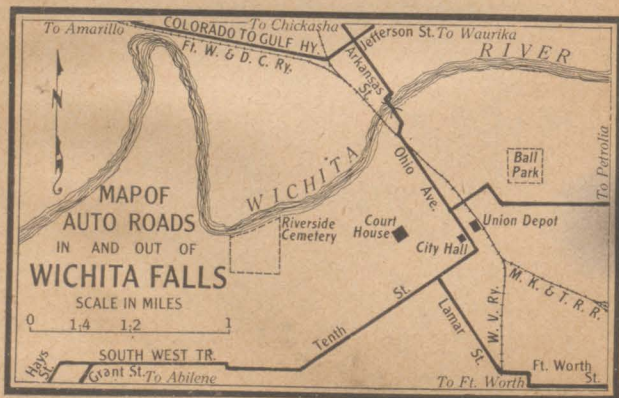
Old Spanish Trail (Hy. No. 3)		San Antonio to Del Rio.					
0	0	SAN ANTONIO	166	86	22	N. Uvalde	80
25	25	Castroville	141	88	2	Uvalde	78
42	17	Hondo	124	135	47	Brackettville	31
51	9	D'Hanis	115	166	31	DEL RIO	0
64	18	Sabinal	102				

Ozark Trails—Tucumcari, N. M., to Mangum, Okla.							
0	0	Tucumcari, N. M.	271	179	30	Clarendon	92
83	83	Vega, Tex.	188	227	48	Wellington, Tex.	44
119	36	AMARILLO	152	271	44	Mangum, Okla.	0
149	30	Claude	122				

Roger Q. Mills Hy. (Via Hy. No. 7 to Fairfield)—Abilene to Waco and Haslam.

0	0	ABILENE	440	268	11	Mexia	172
55	55	Coleman	385	280	12	Teague	160
64	9	Santa Anna	376	290	10	Fairfield	150
87	23	Brownwood	353	319	29	PALESTINE	121
126	39	Goldthwaite	314	349	30	Rusk	91
176	50	Gatesville	264	361	12	Alto	79
201	25	McGregor	239	387	26	Nacogdoches	53
221	20	WACO	219	422	35	Center	18
257	36	Cooledge	183	440	18	Haslam	0

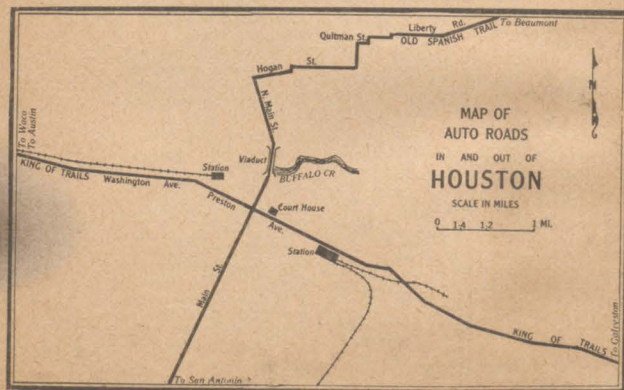
State Highway No. 5—Texarkana to Wichita Falls							
0	0	TEXARKANA	298	173	31	SHERMAN	125
23	23	New Boston	275	192	19	Whitesboro	106
67	44	Clarkville	231	207	15	GAINESVILLE	91
80	13	Detroit	218	232	25	St. Jo	66
101	21	PARIS	197	250	18	Nocona	48
126	24	Honey Grove	178	278	28	Henrietta	20
142	17	Bonham	156	298	20	WICHITA FALLS	0



San Jacinto Battlefield Trip							
0	0	HOUSTON	44	44	23	E. Houston	0
21	21	San Jacinto Battlefield	23				

South West Trail—Lawton, Okla., to Laredo and Austin							
0	0	Lawton, Okla.	610	454	70	SAN ANTONIO	156
47	47	Burkburnett, Tex.	563	487	33	Devine	123
63	16	WICHITA FALLS	547	509	22	Pearsall	101
112	49	Olney	498	543	34	Cotulla	67
126	14	New Castle	484	610	37	LAREDO	0
186	60	Albany	424				
213	27	Baird	397	310	0	Brady	146
257	44	Coleman	353	366	56	Llano	90
310	53	Brady	300	398	32	Burnet	58
384	74	Fredericksburg	226	456	58	AUSTIN	0

State Highway No. 35—Houston to Nacogdoches and Shreveport, La.							
0	0	HOUSTON	256	141	20	Nacogdoches	115
19	19	Humble	237	170	29	Timpson	86
46	27	Cleveland	210	193	23	Haslam, Tex.	63
65	19	Coldspring	191	194	1	Logansport, La.	62
82	17	Livingston	174	216	22	Mansfield	40
105	23	Corrigan	151	256	40	SHREVEPORT	0
121	16	Lufkin	135				



## ELECTRIC RAILROADS

Eastern Texas Elec. Co.....	V-9	Southwestern Traction Co.....	Q-7
Beaumont to Port Arthur.....		Belton to Temple.....	
El Paso Electric Ry.....	A-5	Texas Electric Ry.....	Q-5
El Paso to Ysleta.....		Line from Waco to Dallas and Deni- son, also from Dallas to Corsicana.....	
Galveston Houston Electric Co.....	U-10	Texas Interurban Ry.....	R-3
Galveston to Houston.....		Dallas to Terrell.....	
Northern Texas Traction Co.....	Q-4		
Lines from Ft. Worth to both Dallas and Cleburne.....			

## RAILROADS

Railroads	Location Key	Railroads	Location Key
Abilene & Southern.....	M-4	Missouri Pacific.....	V-2
Angelina & Neches Riv.....	U-6	Moscow, Camden & San Augustine.....	U-7
Asherton & Gulf.....	M-12	Motley County.....	K-1
Atchison, Topeka & Santa Fe.....	Q-1	Nacogdoches & Southeastern.....	U-6
Bartlett Western.....	P-7	Orange & Northwestern.....	V-8
Beaumont, Sour Lake & Western.....	U-9	Panhandle & Santa Fe.....	B-3
Brownwood, North & South.....	N-5	Paris & Mt. Pleasant.....	T-2
Caro Northern.....	U-5	Pecos Valley Southern.....	E-7
Chicago, Rock Island & Gulf.....	P-1	Port Bolivar Iron Ore.....	U-4
Chicago, Rock Island & Pacific.....	P-1	Quanah, Acme & Pacific.....	K-1
Colorado & Southern (Ft. W. & D.C.).....	A-1	Ringling, Eastland & Gulf.....	N-4
Cotton Belt Route (St. L. S. W. Ry.).....	T-4	Rio Grande & Eagle Pass.....	M-14
Denison & Pacific Suburban.....	R-2	Rio Grande, El Paso & Santa Fe.....	A-5
Line from Denison to Sherman Jc.....		Rio Grande.....	Q-17
East Texas & Gulf.....	V-8	Roby & Northern.....	L-3
El Paso & Southwestern.....	A-5	Roscoe, Snyder & Pacific.....	K-0
Fort Worth & Denver City.....	B-2	San Antonio & Arkansas Pass.....	P-14
Fredericksburg & Northern.....	N-6	San Antonio Southern.....	O-10
Frisco Lines.....	Q-8	San Antonio, Uvalde & Gulf.....	O-11
		San Benito & Rio Grande Val.....	O-16
Galveston Harrisburg & San Antonio.....	A-5	Shreveport, Houston & Gulf.....	U-6
Galveston, Houston & Henderson.....	U-10	Southern Pacific.....	J-9
Groveton, Lufkin & Northern.....	U-6	St. Louis, Brownsville & Mex.....	Q-12
Gulf & Northern.....	W-7	St. Louis-San Francisco.....	Q-3
Gulf Coast Lines.....	P-13	St. Louis, San Francisco & Texas.....	Q-3
Gulf, Colorado & Santa Fe.....	Q-3	St. Louis, Southwestern Ry. of Tex.....	T-4
Gulf, Texas & Western.....	N-2	Sugar Land.....	T-10
Houston & Brazos Valley.....	T-11	Texarkana & Ft. Smith (K.C.S.Ry.).....	T-9
Houston & Texas Central.....	R-6	Texas & New Orleans.....	T-9
Houston, East & West Texas.....	T-9	Texas & Pacific.....	E-6
International Great Northern.....	N-14	Texas City Terminal.....	U-10
Jefferson & Northwestern.....	U-3	Suburban Line.....	
Kansas City, Mex. & Orient.....	M-2	Texas-Mexican.....	N-14
Kansas City Southern.....	V-2	Texas Midland.....	S-2
Katy (M. K. & T. Ry.).....	R-1	Texas Short Line.....	S-3
Lufkin, Hemphill & Gulf.....	V-6	Texas South-Eastern.....	U-6
Mexico North Western.....	A-5	Timpson & Henderson.....	U-5
Midland & Northwestern.....	H-5	Trinity & Brazos Valley.....	S-7
Missouri, Kansas & Tex. of Tex.....	R-1	Trinity Valley & Northern.....	U-8
Missouri, Okla. & Gulf of Texas.....	R-1	Trinity Valley Southern.....	T-7
		Weatherford, Mineral Wells & N. W.....	P-3
		Wichita Falls & Northwestern.....	N-1
		Wichita Falls & Southern.....	N-2
		Wichita Falls, Ranger & Ft. Worth.....	O-2
		Wichita Valley.....	N-2

## STATE INSTITUTIONS

Epileptic Colony.....	Abilene	N. Texas Normal.....	Denton
Sul Ross Normal.....	Alpine	School of Mines.....	El Paso
Grubbs Vocational College.....	Arlington	Medical College.....	Galveston
Capitol.....	Austin	Walter Colquitt Home for Crippled Children.....	Galveston
Confederate Home for Men.....	Austin	Girls' Training School.....	Gainesville
Deaf, Dumb & Blind In- stitute for Colored.....	Austin	Juvenile Training School.....	Gatesville
Feeble Minded Colony.....	Austin	Sam Houston Normal.....	Huntsville
Lunatic Asylum.....	Austin	Prairie View Normal (Col- ored).....	Prairie View
School for the Blind.....	Austin	E. Texas Hospital for In- sane.....	Rusk
University of Texas.....	Austin	S. W. Insane Asylum.....	San Antonio
Woman's Confederate Home.....	Austin	S. W. Texas Normal.....	San Marcos
W. Texas Normal.....	Canyon	State Tubercular Sanatorium	San Antonio
Agri. & Mech. College.....	College Station	Jno. Tarleton College.....	Stephenville
E. Texas Normal.....	Commerce	N. Texas Hospital for Insane Terrell	
Orphans' Home.....	Corsicana	N. W. Tex. Hosp. for Insane. Wichita Falls	
College of Industrial Arts.....	Denton		

## EDUCATIONAL AND OTHER INSTITUTIONS

Baylor College.....	Belton	Col. of Marshall.....	Marshall
U. S. Dry Farm.....	Big Sp.	Midland College.....	Midland
Blinn College.....	Brenham	Home for Aged.....	Palacios
Lutheran College.....	Clifton	St. Marys Academy.....	Palestine
L. O. O. F. Widows' & Or- phans' Home.....	Corsicana	Wayland Bap. Col.....	Plainview
Mary Allen Sem.....	Crockett	Port Arthur Col.....	Port Arthur
Deatur Bap. Col.....	Decatur	Rusk College.....	Rusk
St. Xavier's Academy.....	Denison	Peacock Mil. Col.....	San Antonio
Army Post.....	Eagle Pass	W. Tex. Mil. Col.....	San Antonio
College of City of El Paso.....	El Paso	Baptist Academy.....	San Marcos
El Paso School for Girls.....	El Paso	Coronah Mil. School.....	San Marcos
S. Bap. Theo. Sem.....	Ft. Worth	Kidd Key Col.....	Sherman
Tex. Christian Uni.....	Ft. Worth	State A. & M. Col.....	Stephenville
Tex. Woman's Col.....	Ft. Worth	Tyler Com. Col.....	Tyler
Catholic University.....	Galveston	Nazareth Academy.....	Victoria
Southwestern Uni.....	Georgetown	St. Joseph's Col.....	Victoria
Rice Institute.....	Houston	Baptist Sanitarium.....	Waco
Notre Dame.....	Kerrville	Baylor Uni.....	Waco
S. Tex. Normal (proposed).....	Kingsville	Trinity University.....	Waxahachie
Laredo Seminary.....	Laredo	Grayson College.....	Whitewright
Mercy Hospital.....	Laredo	Baldwin's Bus. Col.....	Yoakum













Pop.	Co.	Alt.	Key	Pop.	Co.	Alt.	Key
	40		Crow, Wood	150	Danbury, Brazoria		T-10
1175	CROWELL		Foard 1456	250	Danevang, Wharton		S-11
			County seat of Foard Co. Farming. Gin.	250	Daniel, Houston		T-6
			C. Lloyd, hotel.	83	Daphne, Franklin		T-2
300	Crowley, Tarrant			25	Darden, Bowie		U-2
25	Crown, Atascosa			40	Darzan, Panola		V-4
	Crowthert, McMullen			100	Darrouzett, Lipscomb		D-1
50	Cryer Creek, Navarro			500	Darwin, Webb		M-13
1000	Crystal City, Zavalla			75	Daryl, Harrison		U-4
100	Crystal Falls, Stephens			100	Datura, Limestone		R-5
75	Cuba, Johnson				Daugherty, Culberson		C-6
3671	CUERO, De Witt	177	Q-10	25	Davenport, Red River		T-1
			County seat of De Witt Co. Farming, cattle and turkey raising. Wholesale grocery, packing plant and gins.	400	Davilla, Milam		Q-7
			Muti Hotel		Davisville, Angelina		U-6
			Cuevitas, Jom Hogg	98	Davy, DeWitt		P-10
100	Culleoka, Collin			25	Dawn, Deaf Smith		B-3
945	Cumby, Hopkins	635	S-3	950	Dawson, Navarro	482	R-5
200	Cundiff, Jack		P-2	1500	Dayton, Liberty	92	U-9
25	Cuney, Cherokee		T-5		Farming, rice culture and lumbering.		
250	Cunningham, Lamar		T-2	40	Deadwood, Panola		V-4
	Curlew, Floyd		C-4	15	Dean, Clay		O-1
25	Currie, Navarro		R-5	100	Deanville, Burlison		R-3
1000	Cushing, Nacogdoches	420	U-5	175	De Berry, Panola		V-4
63	Cusseta, Cass		U-3	2205	DECATUR, Wise	1059	P-3
50	Cut, Houston		T-6		County seat of Wise Co. Farming. Marble works and gin. Lillard flour mill.		
112	Cuthand, Red River		T-2		Hotel Greathouse.		
30	Cuthbert, Mitchell		K-4		Decoy, Nacogdoches		U-6
30	Cyclone, Bell		Q-7	25	Deepwater, Harris		T-9
50	Cypress, Harris		S-9		Deermark, Harris		T-9
38	Cypress Mill, Blanco		O-8	910	De Kalb, Bowie	410	U-2
					Farming and lumbering.		
25	Dacosta, Victoria		R-11	5	Delba, Fannin		R-2
25	Dacus, Montgomery		S-8	3302	De Leon, Comanche	1268	O-5
843	DAINGERFIELD				Farming, grazing and oil. De Leon Peanut Co.		
	Morris		U-3		Hotels: Bills and Lambert.		
	County seat of Morris Co.			75	Delfina, Hidalgo		P-16
200	Dalby Springs, Bowie		U-2	37	Delhi, Caldwell		Q-9
310	Dale, Caldwell		P-9	125	Delia, Limestone		R-6
2676	DALHART, Dallam	3987	A-1	12000	DEL RIO, Val Verde		
	County seat of Dallam Co. Farming and cattle raising. Railroad shops. Wholesale groceries and saddlery shops.				County seat of Val Verde Co. Stock raising. Railroad division point. Wool and mohair production.		
	De Soto and Oxford Hotels.				Hotels: St. Charles, Franks, Henson Val Verde, Del Rio & Graf.		
225000	DALLAS, Dallas	434	R-3	200	Delvalle, Travis		P-8
	County seat of Dallas Co. Farming, fruit, stock raising and lumbering. Health resort. Annual wholesale business 415 million, and annual manufacturing business 125 million.			50	Delwin, Cottle		D-4
	Hotels: Adolphus, Oriental, Jefferson.			40	Democrat, Comanche		O-6
				20000	Denison, Grayson	726	R-1
532	Dalworth Park, Dallas		Q-4		Farming, fruit and stock raising. Railroad shops. Cotton mills, peanut factory, foundry, flour mill, etc.		
150	Damon (Damon Mound), Brazoria		S-10		Hotel Denison.		
	Damon Mound (Damon), Brazoria		T-10	50	Denning, San Augustine		V-6
150	Damsite, Hardeman		E-4	50	Dennis, Parker		P-4
12	Dan, Wise		P-2	15	Denny, Falls		R-6
				80	Denson Spring, Anderson		T-6
				7626	DENTON, Denton	625	Q-3
					County seat of Denton Co. Farm		

Pop.	Co.	Alt.	Key	Pop.	Co.	Alt.	Key
			ing and stock raising. Cotton gins, flour and oil mills.	150	Devers, Liberty		U-9
			Cottage Hotel.	995	Devine, Medina	670	N-10
18	Dentonio, Dimmit		L-12		Farming, grazing and oil.		
25	Denver, Montague		P-2	150	Dew, Freestone		S-6
821	Deport, Lamar		T-2	100	Dewalt, Fort Bend		T-10
50	Derby, Frio		N-11	250	Dewcycville, Newton		W-8
50	Derden, Hill		Q-5	50	Dewville, Gonzales		P-10
36	Dermott, Scurry		K-3	300	Dexter, Cooke		Q-1
3008	Desdemona, Eastland		O-5	1000	D'Hanis, Medina	881	M-10
	Oil district.			50	Dial, Fannin		S-2
30	Desert, Collin		R-2	250	Dialville, Cherokee		T-5
72	De Soto, Dallas		R-4	100	Diboll, Angelina		U-6
26	Dessau, Travis		P-3	50	Dickey, Parker		P-3
1500	Detroit, Red River	485	T-2	250	DICKINS, Dickens		K-2
	Farming, stock raising and lumbering.				County seat of Dickens Co.		U-10
	Duncan hotel.			400	Dickinson, Galveston		T-2
	Dunaway, Red River		U-9	100	Dike, Hopkins		R-8
	Dunbar, Red River		U-9	100	Dille, Frio	596	N-11
	Dunbar, Red River		U-9	120	Dilworth, Gonzales		Q-10
	Dunbar, Red River		U-9	200	Dime Box, Lee		R-8
	Dunbar, Red River		U-9	150	DIMMIT, Castro		B-3
	Dunbar, Red River		U-9		County seat of Castro Co.		
	Dunbar, Red River		U-9	75	Dimple, Red River		T-2
	Dunbar, Red River		U-9	50	Dinero, Live Oak		P-12
	Dunbar, Red River		U-9	25	Dinkins, Brazos		S-8
	Dunbar, Red River		U-9	180	Direct, Lamar		S-1
	Dunbar, Red River		U-9	200	Dirgin, Rusk		U-4
	Dunbar, Red River		U-9	25	Ditto, Atascosa		O-11
	Dunbar, Red River		U-9	100	Divot, Frio		M-11
	Dunbar, Red River		U-9	75	Dixon, Hunt		S-3
	Dunbar, Red River		U-9	75	Doans, Wilbarger		E-4
	Dunbar, Red River		U-9	200	Dobbin, Montgomery		S-8
	Dunbar, Red River		U-9	495	Dodd City (Dodds), Fannin		S-2
	Dunbar, Red River		U-9		Dodds (Dodd City), Fannin		S-2
	Dunbar, Red River		U-9	450	Dodge, Walker	402	T-7
	Dunbar, Red River		U-9	500	Dodsonville, Collingsworth		D-3
	Dunbar, Red River		U-9	500	Dolores (San Jose), Webb		M-13
	Dunbar, Red River		U-9	200	Donie, Freestone		S-6
	Dunbar, Red River		U-9	1579	Donna, Hidalgo	97	P-16
	Dunbar, Red River		U-9		Farming and sugar production.		
	Dunbar, Red River		U-9	10	Donna, Collin		R-2
	Dunbar, Red River		U-9	25	Doole, McCulloch		M-6
	Dunbar, Red River		U-9	18	Dora, Nolan		L-4
	Dunbar, Red River		U-9	200	Dorchester, Grayson		R-2
	Dunbar, Red River		U-9		Dorris, Stonewall		L-3
	Dunbar, Red River		U-9		Dorr Jr., Nacogdoches		U-6
	Dunbar, Red River		U-9				











Pop.	Co.	Alt.	Key	Pop.	Co.	Alt.	Key
1188	LAMESA, Dawson		H-3 County seat of Dawson Co. Farming. Cotton gins. W. R. Kelly, hotel.	300	Leesville, Gonzales		P-10 LEFORS, Gray County seat of Gray County.
175	Lamkin, Comanche		O-5	200	Leggett, Polk		U-7
25	Lammburg, Atascosa		O-10	100	Leigh, Harrison		V-4
2107	LAMPASAS, Lampasas		1018 O-7 County seat of Lampasas Co. Farming. Oil mill and wholesale grocery. Wachen & Moore hotels	200	Lelia Lake, Donley		C-3
1190	Lancaster, Dallas		512 R-4 Farming. Oil mill and gins. Simpson Hotel.	150	Leming, Atascosa		O-10
25	Landrum, Cherokee		T-6	100	Lemonville, Orange		W-8
35	Lane, Hunt		R-2		Lena, Fayette		Q-9
50	Lane City, Wharton		S-10	30	Lenz, Karnes		P-11
50	Laneport, Williamson		Q-7	50	Leo, Cooke		Q-2
234	Laneville, Rusk		U-5	100	Leona, Leon		S-7
22	Lange, Gillespie		N-8	1383	Leonard, Fannin		704 R-2 Farming. Flour mills and gins.
125	Langtry, Val Verde		J-9	60	Leon Junction, Coryell		P-6
128	Lanham, Hamilton		P-5	50	Leon Springs, Bexar		O-9
100	Lanier, Cass		V-3	100	Leroy, McLennan		Q-5
75	Lannius, Fannin		S-2	5	Lesley, Hall		C-3
4	La Paloma, Cameron		Q-16	5	Lester, Hunt		S-2
100	Lapara, Live Oak		P-12	28	Letot, Dallas		Q-3
889	LaPorte (LaPorte B.), Harris		28 U-9	25	LEVELLAND, Hockley		H-2 County seat.
678	LaPorte Beach (La Porte), Harris		28 U-9	120	Levita, Coryell		P-6
300	La Pryor, Zavalla		L-11	800	Lewisville, Denton		484 Q-3
27000	LAREDO, Webb		438 M-14 County seat of Webb County. Winter truck farming. Bermuda onions, grain and live stock raised. Railroad shops. Natarioriums. Packing sheds. Soap, ice, and other factories. Bender, Hamilton, St. Anthony hot.	600	Lexington, Lee		456 Q-8 Farming.
150	Larissa, Cherokee		T-5	1117	LIBERTY, Liberty		41 U-8 County seat of Liberty County. Farming.
250	La Rue, Henderson		S-5	500	Liberty Hill, Williamson		1040 P-7
50	La Salle, Limestone		R-6	10	Lieb, Hutchinson		C-1
150	Lassater, Marion		U-3	300	Lillian, Johnson		U-5
100	Latch, Upshur		T-3	25	Lillian, Johnson		Q-4
100	Latex, Houston		T-6	10	Limpia, Jeff Davis		M-9
50	Latium, Washington		R-9	70	Lincoln, Lee		E-7
475	Lavernia, Wilson		476 O-10	701	Lindale, Smith		559 T-4 Farming. Canning factories and gins.
300	Lavon, Collin		R-3		J. H. Jarmon, hotel.		
25	La Ward, Jackson		R-11	702	LINDEN, Cass		379 V-3 County seat of Cass Co.
125	Lawn, Taylor		M-5	40	Lindenau, DeWitt		Q-10
150	Lawrence, Kaufman		R-3	126	Lindsay Cooke		Q-2
41	Lawson, Dallas		R-4	200	Lingville, Erath		O-5
100	Lawsonville, Rusk		U-5		Lingo, Nacogdoches		U-6
100	Lazare, Cottle		D-4	500	Linnflat, Nacogdoches		P-4
25	Leaday, Coleman		M-6	250	Lipan, Hood		U-5
500	League City, Galveston		U-10		LIPSCOMB, Lipscomb		D-1 County seat of Lipscomb County.
318	LEAKEY, Real		M-9 County seat of Real County.	90	Lisbon Dallas (6 mi. s. of Dallas)		R-3
250	Leander, Williamson		P-8	75	Lissie, Wharton		S-10
150	Leary, Bowie		V-2	100	Littig, Travis		Q-8
150	Lebanon, Collin		R-3	112	Little Elm, Denton		Q-3
200	Lebetter, Fayette		R-8	200	Littlefield, Lamb		B-4
20	Lees, Glascock		J-5	225	Little River, Bell		Q-7
300	Leesburg, Camp		T-3	5	Live Oak Hill, Fayette		R-9
100	Lees Mill, Newton		W-7	200	Liverpool, Brazoria		T-10
				928	LIVINGSTON, Polk		194 U-7 County seat of Polk County. Farming. Ice factory, gins and shingle mill.
				1645	LLANO, Llano		1029 N-7 County seat of Llano County. Farming and stock raising. Sum-

Pop.	Co.	Alt.	Key	Pop.	Co.	Alt.	Key
25	Llano Grande, Hidalgo		P-16	4051	LUBBOCK, Lubbock		3106 J-2 County seat of Lubbock County. Farming and grazing. Cotton gins and creamery. Hotels: Merrill and Lubbock Inn.
60	Lloyd, Denton		Q-3	150	Lucas, Collin		R-3
25	Locho, Culberson		D-7	10	Luckenbach, Gillespie		N-8
60	Lochridge, Brazoria		T-10	300	Lueders, Jones		M-4
100	Locker, San Saba		N-6	60	Lulla, Grayson		R-2
3731	LOCKHART, Caldwell		518 P-9 County seat of Caldwell County. Farming and cotton culture. Many seed houses. Cotton gins. Mrs. Farris, hotel.	5000	LUFKIN, Angelina		326 U-6 County seat of Angelina County. Farming and lumbering. Saw mills, wagon works, etc. Angelina and Bonner Hotels.
1118	Lockney, Floyd		C-4 Farming. Gin. Brewster House.	1502	Luling, Caldwell		407 P-9 Farming. Cotton compress and oil mill. Wilson Hotel.
20	Locust, Grayson		R-1	400	Lumberton (Fletcher), Hardin		V-8
30	Loge, Hall		C-3	100	Lund, Travis		Q-8
150	Lodi, Marion		V-3	49	Lusk, Throckmorton		N-3
75	Lodwick, Marion		U-3		Luther, Howard		J-4
15	Logan, Panola		V-4	35	Lutie, Collingsworth		D-3
	Logsdon, Gaines		G-4	20	Luxello, Bexar		O-9
125	Lohn, McCulloch		M-6		Luzon, Kent		L-3
150	Lolita, Jackson		R-11	50	Lydia, Red River		U-2
	Loma Vista, Zavalla		M-11	300	Lyford, Willacy		P-16
995	Lometa, Lampasas		1484 O-7	37	Lyman, Motley		C-4
	Lomo Alta, McMullen		O-12	75	Lynchburg, Harris		U-9
160	London, Kimble		M-7	300	Lyons, Burleson		R-8
75	Lone Camp, Palo Pinto		O-4	1000	Lyra, Palo Pinto		O-4
10	Lone Cedar, Ellis		R-5		Lyric, Liberty		U-8
25	Lone Grove, Llano		O-7	500	Lytle, Atascosa		745 N-10
1017	Lone Oak, Hunt		562 S-3 Farming. Gins.	200	Lytton Springs, Caldwell		P-9
50	Lonestar, Cherokee		T-5	1500	Mabank, Kaufman		395 S-4 Farming. Gins.
300	Long Branch, Panola		U-5	50	Mabelle, Baylor		N-2
	Longfellow, Pecos		G-8	110	Macedona, Bexar		N-10
100	Long Lake, Anderson		S-6	30	Macedonia, Liberty		U-8
150	Long Mott, Calhoun		R-12		Macedonia, Walker		S-7
50	Longpoint, Washington		R-8	60	Macie, Kinney		K-10
5713	LONGVIEW, Gregg		830 U-4 County seat of Gregg County. Farming. Crate and plow factories. Lumber mills. Elevator, flour and oil mills. Hotels: Magnolia, Moberly, Elk	50	Macon, Franklin		T-3
	Longview Jr., Gregg		U-4	50	Macone, San Augustine		V-6
150	Longworth, Fisher		L-4	25	Madero, Hidalgo		O-16
20	Lonie, Childress		D-3		MADISONVILLE, Madison		S-7 County seat of Madison County. Farming and stock raising. Brizzolara and Shapira Hotels.
	Loop, Gaines		H-3	75	Madras, Red River		T-2
200	Lojeno, Zapata		N-15	50	Magnet, Wharton		S-10
610	Lorsain, Mitchell		2258 K-4	175	Magnolia, Montgomery		S-8
450	Lorena, McLennan		593 Q-6	75	Magnolia Beach, Calhoun		R-11
250	Lorenz, Crosby		J-2	50	Magnolia Springs, Jasper		V-7
75	Los Ebanos, Hidalgo		O-16	25	Mahl, Nacogdoches		U-5
50	Los Fresnos, Cameron		Q-16	15	Mahomet, Burnet		P-7
150	Los Indios, Cameron		P-17	150	Mahon, Panola		U-4
	Losoya, Bexar		O-10	450	Malakoff, Henderson		377 S-5
1093	Lott, Falls		522 Q-7 Farming. Gins. Mrs. Ross, hotel.	100	Mallard, Montague		P-2
	Lou, Dawson		H-3	588	Malone, Hill		482 R-5
15	Louetta, Harris		T-9	50	Maloney, Ellis		R-4
300	Louise, Wharton		R-10	150	Malta, Bowie		U-2
	Love Field, Dallas		R-3		Malvern, Leon		S-6
50	Lovelace, Hill		Q-5				
625	Lovelady, Houston		300 T-7				
200	Loving, Young		C-3				
10	Lowske, Concho		L-6				

Pop.	Co.	Alt.	Key
100	Manchaca	Travis	P-3
100	Manconester	Red River	T-1
27	Manda	Travis	Q-8
100	Mangum	Eastland	N-4
50	Manheim	Lee	Q-8
75	Mankins	Archer	N-2
300	Manning	Angelina	U-6
827	Manor	Travis	P-8
			Farming and cotton raising.
719	Mansfield	Tarrant	Q-4
100	Manvel	Brazoria	T-10
30	Marak	Milam	Q-7
25	Marakville	Bell (Temple 12 mi.)	
700	Marathon	Brewster	F-8
639	Marble Falls	Burnet	O-8
			Farming and stock raising. Quarries.
3553	MARFA	Presidio	E-8
			County seat of Presidio County. Grazing. Game. Wax and tank factories. Marfa Mfg. Co. Alta Vista Hotel.
150	Margaret	Foard	E-4
80	Marianna	Victoria	Q-11
13	Marie	Runnels	L-5
250	Marietta	Cass	U-3
25	Marilee	Grayson	R-2
525	Marion	Guadalupe	O-9
400	Markham	Matagorda	S-11
35	Markley	Young	O-2
4310	MARLIN	Falls	R-6
			County seat of Falls County. Farming. Brick works, planing mill, etc. Majestic Hotel.
350	Marques	Leon	S-6
150	Mars	Van Zandt	S-4
17000	MARSHALL	Harrison	V-4
			County seat of Harrison County. Farming, dairying and lumbering. Railroad shops, 2500 employees. Car wheel works, foundry, pottery and oil mill. Marshall, Morgan, Ginnochio Hotel.
3105	Mart	McLennan	R-6
			Farming and cotton raising. Oil mill, compress and gins. Abrams Hotel.
500	Martindale	Caldwell	P-9
50	Martinez	Bexar	O-10
100	Martins Mills	Van Zandt	S-4
50	Martinsville	Nacogdoches	V-5
100	Maryneal	Nolan	L-5
150	Marysville	Cooke	Q-2
1137	MASON	Mason	N-7
			County seat of Mason County. Massey, Hill.
40	Masters	Throckmorton	N-3
692	MATADOR	Motley	C-4
			County seat of Motley County. Matador Jc., Motley.
600	Matagorda	Matagorda	S-11
700	Mathis	San Patricio	P-13
100	Matinsburg	Camp	T-3
150	Matthews	Colorado	S-10

Pop.	Co.	Alt.	Key
400	Maud	Bowie	V-2
			Maudlowe, Refugio.
50	Mauriceville	Orange	W-8
85	Maurin	Gonzales	Q-10
100	Maverick	Runnels	L-5
50	Maxdale	Bell	P-7
75	Maxey	Lamar	S-2
400	Maxwell	Caldwell	P-9
400	May	Brown	N-5
200	Maydelle	Cherokee	T-5
			Mayflower, Newton.
200	Maynard	San Jacinto	T-8
50	Maytown	Nacogdoches	U-5
417	Maypearl	Ellis	Q-4
153	Maysfield	Milam	R-7
50	Mazatlan	Duval	O-14
20	McAdoo	Dickens	K-2
5331	McAllen	Hidalgo	O-16
			Farming and citrus fruit. Cotton gins. Casa de Palmas Hotel.
700	McCaulley	Fisher	L-3
40	McClanahan	Falls	R-6
25	McCollum	Montague	P-1
75	McCoy	Kaufman	S-3
30	McCoy	Atascosa	O-11
450	McDade	Bastrop	Q-8
27	McDaniels	Ellis	Q-5
1	McGirk	Hamilton	O-6
2088	McGregor	McLennan	Q-5
			Farming. Oil mill. New King Hotel.
6677	McKINNEY	Collin	R-3
			County seat of Collin County. Farming, cotton and stock raising. Elevator, flour mill, compress and gins. Commercial Hotel. McKinney Springs, Brewster.
741	McLean	Gray	D-2
25	McLendons	Rockwall	R-3
100	McMahan	Caldwell	P-9
200	McNeal	Travis	P-8
25	McPeak	Upshur	U-3
200	McQueeny	Guadalupe	P-9
12	Meadow	Ferry	H-2
35	Mecca	Madison	S-7
200	Medicine Mound	Hardeman	E-4
200	Medill	Lamar	T-1
250	Medina	Bandera	N-9
25	Medina Lake	Medina	N-9
10	Meeks	Bell	Q-7
500	Megargel	Archer	N-2
253	Melissa	Collin	R-2
100	Melon	Frio	N-11
400	Melrose	Nacogdoches	U-6
250	Melvin	McCulloch	M-7
2839	MEMPHIS	Hall	D-3
			County seat of Hall County. Farming and stock raising. Cotton compress and gins. H. G. Stephens, hotel.
1164	MENARD	Menard	M-7
			County Seat of Menard County.
25	Mendota	Hemphill	D-2

Pop.	Co.	Alt.	Key
100	Mendoza	Caldwell	P-9
25	Menlow	Hill	Q-5
20	Mentz	Colorado	R-9
4000	Mercedes	Hidalgo	P-16
			Irrigated winter truck farming. Oranges raised. Cotton gins. Mercedes Hotel.
500	Mercury	McCulloch	N-6
75	Mereta	Tom Green	L-6
1024	MERIDIAN	Bosque	P-5
			County seat of Bosque County. Farming.
322	Merit	Hunt	R-2
1810	Merkel	Taylor	L-4
			Farming, cotton and stock raising. Gins. Collins and Lone Star Hotels.
			Merle, Burleson.
20	Merrimac	Wood	T-3
342	Mertens	Hill	Q-5
650	Mertzou	Irion	K-6
35	Mesa	Grimes	S-7
674	Mesquite	Dallas	R-3
8500	Mexia	Limestone	R-6
			Farming and oil field. Cotton factory and oil mill. Hotels: Hurdleston, Majestic & Commercial.
175	Meyserville	Dewitt	Q-11
935	MIAMI	Roberts	D-2
			County seat of Roberts County. Farming. T. L. Graham, hotel. Michies, Dawson.
10	Mickey	Floyd	C-4
100	Middleton	Leon	S-7
25	Middle Water	Hartley	A-2
50	Midfields	Matagorda	S-11
1795	MIDLAND	Midland	H-5
			County seat of Midland County. Cattle grazing and farming. Llano Hotel.
1298	Midlothian	Ellis	Q-4
			Farming, oil mill.
500	Midway	Madison	S-7
112	Midyett	Panola	V-4
66	Miguel	Frio	N-11
250	Mikeska	Live Oak	P-12
100	Milam	Sabine	W-6
800	Milano	Milam	R-7
200	Milburn	McCulloch	N-6
20	Mildred	Navarro	R-5
853	Miles	Runnels	L-6
			Farming and grazing. Childress Hotel.
940	Milford	Ellis	Q-5
25	Mill Creek	Washington	R-8
300	Miller Grove	Hopkins	S-3
250	Millersview	Concho	M-6
400	Millet	La Salle	N-11
150	Millheim	Austin	S-9
400	Millican	Brazos	S-8
800	Millican	Parker	P-4
25	Millwood	Collin	R-3
150	Milton	Lamar	T-2
200	Milvid	Liberty	U-8

Pop.	Co.	Alt.	Key
500	Minden	Rusk	U-5
2299	Mineola	Wood	T-4
			Farming and stock raising. Cotton compress, oil and saw mills. Bailey Hotel.
400	Minera	(Santo Tomas), Webb	M-13
183	Mineral	Bee	P-11
10000	Mineral Wells	Palo Pinto	O-3
			Summer and winter resort. Large drinking pavilion. Paving brick plant. Hotels: Crazy, Oxford, Damron, etc.
100	Minerva	Milam	Q-7
25	Mingo	Denton	Q-3
1000	Mingus	Palo Pinto	O-4
			Farming. Flour mill.
75	Minter	Lamar	T-2
25	Miriam	Liberty	U-8
3847	Mission	Hidalgo	O-16
			Farming. Bottling works, wholesale groceries and cotton gin. Hotel Mission.
66	Mission Valley	Victoria	Q-11
125	Missouri City	Fort Bend	T-9
400	Moebetie	Wheeler	D-2
50	Mobile	Tyler	V-7
200	Moffat	Bell	Q-7
25	Moglia	Webb	N-14
100	Moline	Lampasas	O-6
25	Mollie	Red River	U-2
200	Monahans	Ward	G-6
50	Monaville	Waller	S-9
20	Monico	Van Zandt	S-4
			Monington, Anderson.
150	Monkstown	Fannin	S-1
15	Mont	Lavaca	Q-10
300	MONTAGUE	Montague	P-2
			County seat of Montague County. Montalba, Anderson.
200	Montalba	Anderson	S-5
100	Mont Belvieu	Chambers	U-9
			Monte Christo, Hidalgo.
100	Montell	Uvalde	L-9
50	Monteola	Bee	P-11
10	Montfort	Navarro	R-4
450	Montgomery	Montgomery	T-8
75	Monthalia	Gonzales	P-10
40	Monticello	Titus	T-3
200	Montopolis	Travis	P-8
1106	Moody	McLennan	Q-6
			Farming. Carmony Hotel. Moonshine Hill, Harris.
450	Moore	Frio	N-10
150	Mooreville	Falls	Q-6
50	Morales	Jackson	R-10
600	Moran	Schackelford	N-4
			1350. Q-9
50	Moravia	Lavaca	Q-9
672	Morgan	Bosque	P-5
250	Morgan Mill	Erath	O-4
20	Morince	Van Zandt	S-3
			Moro, Taylor.
			Morrill, Cherokee.
50	Morris Ranch	Gillespie	N-8
240	Moscow	Polk	U-7



Pop.	Co.	Alt.	Key	Pop.	Co.	Alt.	Key
30	Oxford, Llano		O-7	10	Pauline, Henderson		S-4
5	Orark Lamar		T-2	20	Pauls Store, Shelby		V-5
427	OZONA, Crockett		J-7	100	Paxton, Shelby		V-5
	County seat of Crockett County.						
30	Padgitt, Young		N-3	25	Payne Springs, Henderson		S-4
1357	PADUCAH, Cottle		D-4	125	Peach, Wood		T-3
	County seat of Cottle County.						
	Farming and grazing. Cotton gins.						
	Paducah Hotel.						
467	Paige, Bastrop		Q-8	250	Peacock, Stonewall		L-3
500	PAINT ROCK, Concho	1600	M-6	100	Pearl, Coryell		P-6
	County seat of Concho County.						
1500	Palacios, Matagorda	17	S-11	140	Pearland, Brazoria		T-10
	Farming, grazing, fish and oysters.						
	Palacios and Park Hotels.						
9	Palafox, Webb		M-13	2161	PEARSALL, Frio	646	N-11
10	Palava, Fisher		L-4		County seat of Frio County.		
12000	PALESTINE, Anderson	510	S-5		Farming, stock and onion raising. Oil mill.		
	County seat of Anderson County.						
	Farming, stock, railroad offices and shops.						
	Hotel O'Neill.						
	Palm, Dimmit		M-11	25	Pear Valley, McCulloch		M-6
748	Palmer, Ellis	468	R-4	300	Peaster, Parker		P-3
400	Palmetto, San Jacinto		T-7	600	Pecan Gap, Delta	566	S-2
	Palodoro, Armstrong		C-3	75	Pecan Grove, Coryell		P-6
400	PALO PINTO, Palo Pinto		O-4	2000	PECOS, Reeves	2596	F-6
	County seat of Palo Pinto County.						
	Farming, fruit and stock raising. Cotton gin. Johnson's Hotel.						
150	Paluxy, Hood		P-4	25	Peden, Tarrant		P-3
987	Pampa, Gray	3234	C-2	25	Pedigo, Tyler		V-7
15	Panecake, Coryell		P-6	20	Peede, Kaufman		R-4
	Pandale, Valverde		J-9	250	Peerless, Hopkins		S-2
250	Pandora, Wilson		P-10	300	Pelham, Navarro		R-5
638	PANHANDLE, Carson	3451	C-2	100	Pella, Wise		P-2
	County seat of Carson County.						
100	Panna Maria, Karnes		P-11	248	Pendleton, Bell		Q-7
50	Panola, Panola		V-4	400	Penelope, Hill		Q-5
150	Papalote, Bee		P-12	571	Peniel, Hunt		S-3
500	Paradise, Wise	754	P-3	300	Penitas, Hidalgo		O-16
18000	PARIS, Lamar	571	S-2	80	Penn, Hopkins		T-3
	County seat of Lamar County.						
	Farming, stock and fruit raising. Cotton oil mills. Furniture, box and vinegar factories.						
	Gibraltar Hotel.						
100	Parker, Johnson		Q-4	200	Pennington, Trinity		T-6
	Parker, Collin		R-3	75	Peoria, Hill		Q-5
300	Park Springs, Wise		F-2	50	Percilla, Houston		T-6
	Farnell, Hall		C-3	300	Perrin, Jack		P-3
	Parkin, Denton		Q-2	200	Perry, Falls		R-6
300	Pasadena, Harris		T-9	50	Perry Landing, Brazoria		T-11
15	Pasche, Concho		M-7	1000	Perryton, Ochiltree		C-1
35	Patillo, Erath		O-4	100	Personville, Limestone		R-6
60	Patrick, McLennan		Q-6	200	Pert, Anderson		T-5
125	Patton, Shelby		V-5	150	Peters, Austin		S-9
150	Pattison, Waller		S-9	150	Petersburg, Hale		C-4
	Farming, stock and fruit raising. Cotton oil mills. Furniture, box and vinegar factories.						
	Gibraltar Hotel.						
200	Pattonville, Lamar		T-2	914	Petrolia, Clay	979	O-1
	Farming, stock and fruit raising. Cotton oil mills. Furniture, box and vinegar factories.						
	Gibraltar Hotel.						

Pop.	Co.	Alt.	Key	Pop.	Co.	Alt.	Key
60	Pinckney, Polk		U-7	50	Porters Springs, Houston		T-6
100	Pine, Camp		U-3		Porterville, Loving		F-6
50	Pine Forest, Hopkins		T-3	500	Portland, San Patricio	32	Q 13
300	Pinehill, Rusk		U-5	1213	PORT LAVACA, Calhoun		
25	Pinehurst, Montgomery		T-8		County seat of Calhoun County.		
200	Pineleaf, Sabine		V-6		Farming and grazing. Ship-building.		
125	Pine Mills, Wood		T-3	1200	Port Neches, Jefferson		V-9
25	Pinkston, Navarro		R-5	350	Port O'Connor, Calhoun		R-12
150	Pioneer, Eastland		N-5	25	Port Sullivan, Milam		R-7
57	Pipecreek, Banders		N-9	15	Posey, Hopkins		T-2
100	Pirtle, Rusk		U-4	10	Posideon, Palo Pinto		O-4
100	Pisek, Colorado		R-9	1436	POST, Garza		J-3
100	Pittbridge, Burleson		R-8		County seat of Garza County.		
2540	PITTSBURG, Camp	392	U-3		Farming and grazing. Postex Cotton Mills.		
	County seat of Camp County.						
	Farming. Cotton gins, foundry, saw mills and box factory.						
	Clayton Hotel.						
50	Placedo Jr., Victoria		R-11	100	Postoak, Jack		O 2
100	Placid, McCulloch		N-6	100	Postoak Point, Austin		R-9
125	PLAINS, Yoakum		G-3	900	Poteet, Atascosa		O-11
	County seat of Yoakum County.						
3989	PLAINVIEW, Hale		B-4	250	Poth, Wilson		P-11
	County seat of Hale County.						
	Farming. Flour mill and 3 elevators.						
	Hotels: Wayland and Ware.						
1715	Plano, Collin	655	R-3	100	Potosi, Taylor		M-4
	Farming. Oil mill and gin.						
	Plano hotel.						
200	Plantersville, Grimes		S-8	454	Pottsboro, Grayson		R-2
50	Platt, Angeli		U-6	150	Pottsville, Hamilton		O-6
45	Pleasant Grove, Wood		T-3	51	Powderly, Lamar		T-1
1038	Pleasanton, Atascosa		O-11	150	Powell, Navarro		R-4
25	Pleasant Valley, Dallas		R-3	200	Poyner, Henderson		S-5
150	Pledger, Matagorda		S-10		Prague, Calhoun		
28	Plieheville, Mason		N-7	100	Praha, Fayette		Q-9
100	PLEMONS, Hutchinson		C-2	75	Prairie Dell, Bell		P-7
	County seat of Hutchinson County.						
	Puck, Polk		U-7	200	Prairie Hill, McLennan		R-6
100	Plum, Fayette		Q-9	242	Prairie Lea, Caldwell		P-9
25	Pluto, Ellis		Q-5	300	Prairieview, Wallse		S-8
15	Plymouth, Collingsworth		D-3	120	Prairieville, Kaufman		S-4
100	Poetry, Kaufman		R-3	30	attville, Delta		T-2
300	Point Rains		S-3	500	Premont, Jim Wel		P-14
150	Pointblank, San Jacinto		T-7		SA&APRY		
200	Point Isabel, Cameron		Q-17	300	Presidio, Presidio		D-10
	Polar, Kent		K-3	150	Presion, Grayson		R-1
150	Pollock, Angelina		U-6	100	Priddy, Mills		O-6
4338	Polytechnic, Tarrant		Q-4	15	Pride, Dawson		H-3
25	Ponder, Cherokee		T-5	25	Primm, Fayette		Q-9
125	Ponder, Denton		Q-3	25	Primrose, Van Zandt		T-4
135	Pone, Rusk		U-5	500	Princeton, Collin	560	R-3
225	Ponta, Cherokee		T-5	250	Pritchett, Upshur		T-4
196	Pontotoc, Mason		N-7	300	Proctor, Comanche		O-5
500	Pooleville, Parker		P-3	52	Proffit, Young		N-3
400	Port Aransas, Nueces		Q-13	100	Prospect, Clay		O-2
35000	Port Arthur, Jefferson	8	V-9	343	Prosper, Collin	647	R-3
	Farming, stock raising and fishing. Ocean port. Pleasure resort. Bathing, boating, fishing and golf. Large oil refineries.						
	Hotels: Plaza, Lakeview and Central.						
100	Port Bolivar, Galveston		U-10	150	Provident City, Colorado		R-10

150 Quail, Collingsworth..... D-3  
 3691 QUANAH, Hardeman..... 1871 E-4







Pop.	Co.	Alt.	Key	Pop.	Co.	Alt.	Key
150	Tivoli, Refugio		Q-12	400	Tuscola, Taylor		M-5
50	Token, Runnells		M-5	40	Tuxedo, Jones		M-3
15	Tokio, Terry		G-3	51	Twin Sisters, Blanco		O-9
416	Tolar, Hood		P-4	25	Twitty, Wheeler		D-2
200	Tolbert, Wilbarger		E-4	250	Tye, Taylor		M-4
20	Toledo, Newton		W-6	16000	TYLER, Smith	531	T-4
15	Tolette, Lamar		T-2	County seat of Smith County.			
25	Tolosa, Kaufman		S-4	Farming, fruit and stock raising.			
200	Tom Ball, Harris		T-8	Railroad shops. Oil mill and			
367	Tom Bean, Grayson		R-2	gins.			
30	Tona, Kaufman		S-3	Blackstone and Tyler Hotels			
100	Tool, Henderson		S-5	20	Tynan, Bee		P-12
100	Toomey, Shelby		V-5	12	Type, Bastrop		Q-8
100	Topsey, Coryell		P-7	50	Tyson, Hill		Q-5
50	Tornillo, El Paso		B-6				
	Torreillas, Webb		N-14				
	Tosca, Blanco		O-8				
	Toto, Parker		P-3				
100	Tours, McLennan		Q-5	50	Uhland, Caldwell		P-9
15	Tow, Llano		O-7		Ulmer, Grimes		S-8
75	Townbluff, Tyler		V-7	50	Umberger, Randall		B-3
1000	Toyah, Reeves	2907	E-6	200	Union, Wilson		P-10
	Stock raising. Railroad shops.			50	Upton, Bastrop		Q-9
35	Toyahvale, Reeves		E-7	25	Urbana, San Jacinto		U-8
200	Tracy, Milam		Q-7	27	Utley, Bastrop		Q-8
125	Travis, Falls		Q-7	125	Utopia, Uvalde		M-9
	Travis Peak, Travis		P-8	3885	UVALDE, Uvalde		M-10
100	Trawick, Nacogdoches		U-5	County seat of Uvalde County.			
25	Tredway Borden		J-3	Wholesale grocery and apiar-			
300	Trent, Taylor		L-4	ies. Farming and grazing.			
616	Trenton Fannin	754	R-2	Stevenson Hotel.			
	Trevat, Trinity		U-7	Uvalde Jr., (Sansom),			
	Treveno, Duval		O-13	Uvalde.			
	Trexler, Bowie (Redwater			60	Uz, Montague		P-2
	3 mi.)						
75	Trickham, Coleman		N-6	100	Valdasta, Collin		R-2
200	Trinidad, Henderson		S-5	300	Valentine, Jeff Davis		D-8
1363	Trinity, Trinity	226	T-7	200	Valera, Coleman		M-6
	Farming. Saw mills and turpen-			25	Valera Junction, Robertson		R-7
	tine still.			855	Valley Mills, Bosque		Q-6
	Gibson Hotel			100	Valley Spring, Llano		N-7
1258	Troup, Smith	467	T-5	350	Valley View, Cooke		Q-2
	Farming and cotton culture. Saw			25	Valley Wells, Dimmit		M-12
	mills and gins.			75	Van, Van Zandt		T-4
	Murphy and Melton Hotels.			1588	Van Alstyne, Grayson	791	R-2
400	Troy, Bell		Q-7	Farming. Roller mills and gins.			
15	Truby, Jones		M-4	50	Vance, Real		L-9
100	Trumbull, Ellis		R-4	25	Vancourt, Tom Green		L-6
200	Truscott, Knox		M-2	100	Vandalia, Red River		T-2
	Tubbes, Nacogdoches		U-6	40	Vanderbilt, Jackson		R-11
50	Tucker, Anderson		S-5	20	Vanderpool, Bandera		M-9
50	Tuff, Bandera		M-9	600	VAN HORN, Culberson		C-7
150	Uleta, Bee		P-11	4036			
1189	TULLIA, Swisher		B-3	County seat of Culberson County.			
	County seat of Swisher County			175	Van Raub, Bexar		O-9
	Grazing.			200	Van Vleck, Matagorda		S-11
	Hotel Tullia			25	Vasco, Delta		T-2
120	Tulip, Fannin		S-1	250	Vashti, Clay		O-2
100	Tundra, Van Zandt		S-4	100	Vaughan, Hill		Q-5
200	Tunis, Burleson		R-8		Veach, San Augustine		V-6
200	Tupelo, Navarro		R-4	500	VEGA, Oldham		B-2
225	Turkey, Hall		C-4	County seat of Oldham County.			
100	Turlington, Freestone		S-6	900	Velasco, Brazoria		T-11
145	Turnersville, Coryell		P-6	842	Venus Johnson	658	Q-4
75	Turney, Cherokee		T-5	100	Vera, Knox		M-2
100	Turpentine, Jasper		V-7	25	Verdi, Atascosa		O-10
300	Turtle Bayou, Chambers		U-9				

Pop.	Co.	Alt.	Key	Pop.	Co.	Alt.	Key
6000	VERNON, Wilbarger		E-4	60	Walsh, Gonzales		Q-10
	County seat of Wilbarger County.	1205		100	Walter (Hardin), Liberty		U-8
	Farming. Gins, flour and oil			25	Walton, Van Zandt		S-4
	mills.			10	Waneta, Houston		T-6
	Vernon and Bailey Hotels.			50	Waples, Hood		P-4
100	Verona, Collin		R-3	100	Warda, Fayette		Q-9
150	Vesey, Red River		T-1	25	Ware, Dallam		A-1
25	Viboras, Starr		N-15	50	Waring, Kendall		N-9
420	Vickery, Dallas		R-3	100	Warren, Tyler		V-7
8000	VICTORIA	187	Q-11	300	Warrenton, Fayette		R-9
	County seat of Victoria County.			75	Washburn, Armstrong		C-3
	Farming and stock raising.			300	Washington, Washington		S-8
	Railroad shops. Cotton com-			300	Waskom, Harrison		V-4
	press.			25	Wastella, Nolan		K-4
	Delaware and Denver Hotels.			60	Watauga, Tarrant		Q-3
100	Vidauri, Refugio		Q-12	25	Waterloo, Williamson		Q-7
	Vidor, Orange		V-8	476	Waterman, Shelby		V-5
30	Viejo, Kimble		L-7	150	Water Valley, Tom Green		K-6
25	Vienna, Lavaca		R-10	22	Watt, Limestone		R-6
10	View, Taylor		M-4	400	Waukegan, Montgomery		T-8
25	Vigo Park, Swisher		C-3	200	Waverly, Walker		T-8
75	Vilas, Bell		Q-7	8000	WAXAHACHIE, Ellis	530	Q-4
300	Village Mills, Hardin		V-8	County seat of Ellis County.			
100	Vincent, Howard		K-4	Farming and cotton culture.			
200	Vineyard, Jack		P-3	Oil mill and oil refinery.			
15	Vinton, El Paso		A-5	Rogers Hotel.			
25	Violet, Nueces		Q-13	100	Wayland, Stephens		N-4
5	Vista, Hamilton		O-6	25	Wayside, Armstrong		C-3
50	Vivian, Foard		D-4	75	Wealthy, Leon		S-7
82	Voca, McCulloch		N-7	8000	WEATHERFORD, Parker		
25	Volga, Houston		T-7	County seat of Parker County.			
25	Von Ormy, Bexar		O-10	Farming, fruit and stock raising.			
25	Vontress, Haskell		M-3	Flour mills, compress, peanut			
100	Voss, Coleman		M-6	and oil mills.			
15	Votaw, Hardin		U-8	Parker and Montford Hotels			
15	Voth, Jefferson		V-8	50	Weaver, Hopkins		T-3
				75	Webb, Webb		M-13
				35	Webb, Tarrant		Q-4
55000	WACO, McLennan	424	Q-6	311	Webberville, Travis		P-8
	County seat of McLennan County.			300	Webster, Harris		T-10
	Farming and grazing. Cotton			250	Weches, Houston		T-6
	mills. Iron works and many			125	Weesatche, Goliad		Q-11
	factories.			1171	Weimar, Colorado	410	R-9
	Hotels: Raleigh, Waco, State			Farming and cotton culture. Oil			
	House, Metropole, Adams &			mill and gins.			
	Katy			New Jackson Hotel.			
100	Wadsworth, Matagorda		S-11	472	Weinert, Haskell		M-2
894	Waelder, Gonzales	367	Q-9	75	Weir, Williamson		P-7
	Farming. Cotton gins.			225	Welcome, Austin		R-9
50	Wagner, Hunt		S-3	400	Weldon, Houston		T-7
10	Wagram, Mason		N-7		Welfare, Kendall		N-9
150	Walburg, Williamson		P-7	300	Wellborn, Brazos		R-8
20	Waldeck, Fayette		R-9	1968	WELLINGTON, Collings-		
250	Waldrup, McCulloch		M-6	worth.			
10	Walhalla, Fayette		R-9	County seat of Collingsworth			
25	Wall, Tom Green		L-6	County. Farming and stock			
400	Waller, Waller		S-9	raising. Cotton gins.			
20	Walking, Hill		R-5	Wellington Hotel.			
750	Wallis, Austin	132	S-9	200	Wells, Cherokee		U-6
72	Wallisville, Chambers		U-9	30	Welview, Concho		M-7
1449	Walnut Springs, Bosque		P-5	15	Wentz, McMullen		O-12
	Farming and grazing. Railroad	910		15	Weser, Goliad		Q-11
	shops. Elevator.			1200	Weslaco, Hidalgo		P-16
	Randal Hotel.			200	Wesley, Washington		R-9



Pop.	Co.	Alt.	Key	Pop.	Co.	Alt.	Key
1629	West, McLennan	648	Q-5	811	Wills Point, Van Zandt		
	Farming, Cotton oil mills.				Farming and stock raising.	Oil mill and gins.	
400	Westbrook, Mitchell		K-4	250	Wilmer, Dallas		R-4
1500	West Columbia, Brazoria		T-10	20	Wilmeth, Runnels		L-5
	Bradford Hotel			75	Wilson, Lynn		J-2
50	Westfield, Harris		T-9	114	Wimberley, Hays		P-9
500	Westhoff, De Witt	260	Q-10	250	Winchell, Brown		N-6
	West Jr., Harris		T-9	400	Winchester, Fayette		Q-9
631	Westminster, Collin		R-2	389	Windom, Fannin		S-2
25	West Mt., Upshur		U-4	75	Windthorst, Archer		O-2
200	Weston, Collin		R-2	750	Winfield, Titus	446	T-3
75	Westover, Baylor		N-2	200	Winfree, Chambers		U-9
100	Westphalia, Falls		Q-7	200	Wingate, Runnels		L-5
200	Westpoint, Fayette		Q-9	100	Winkler, Navarro		S-5
100	Westville, Trinity		T-7	300	Winnie, Chambers		V-9
30	Wetmore, Bexar		O-9	2184	Winningsboro, Wood	523	T-3
2346	WHARTON, Wharton				Farming, Oil mill and poteries		
	County seat of Wharton County.	111	S-10	300	Winona, Smith		T-4
	Farming and grazing, Syrup factory and oil mill.			1509	Winters, Runnels		M-5
	Nation Hotel				Farming, Oil and flour mills.		
300	WHEELER, Wheeler		D-2	25	Witting, Lavaca		Q-10
	County seat of Wheeler County.			100	Wizard Wells, Jack		P-3
200	Wheeler, Robertson		R-7	25	Woden, Nacogdoches		U-6
300	White City, San Augustine		V-6	1859	Wolfe City, Hunt	674	S-2
225	White Deer, Carson		C-2		Farming, fruit and stock raising.	Oil and flour mills.	
50	Whiteflat, Motley		C-4		Sellers House.		
250	Whitehouse, Smith		T-4	25	Womack, Bosque		Q-5
25	Whiteland, McCulloch		M-7	100	Woodbine, Cooke		Q-2
125	Whiterock, Hunt		S-2	200	Woodbury, Hill		Q-5
1810	Whitesboro, Grayson	787	Q-2	125	Woodland, Red River		T-2
	Farming and cotton culture. Oil mill and gins.			250	Woodlawn, Harrison		V-4
	White and Imperial Hotels			200	Woodrow, Hardin		V-8
1666	Whitewright, Grayson	744	R-2	100	Woods, Panola		V-5
	Farming and stock raising. Oil and flour mills.			400	Woodsboro, Refugio		Q-12
	Brickleader and Payne Hotels.			150	Woodson, Throckmorton		N-3
46	Whitman, Washington		S-8	1000	WOODVILLE, Tyler	232	V-7
1011	Whitney, Hill	585	Q-5		County seat of Tyler County.		
	Farming and cotton culture.				Farming and lumbering. Saw mills.		
25	Whitsett, Live Oak		O-11	10	Woodward, La Salle		M-11
400	Whitt, Parker		P-3	1190	Wortham, Freestone	478	R-5
25	Whittaker, Burleson		R-8		Farming, Cotton gins		
20	Whom, Coleman		N-6		Commercial Hotel.		
50000	WICHITA FALLS,			100	Worthing, Lavaca		Q-10
	Wichita	953	F-4	100	Wrightsboro, Gonzales		P-10
	County seat of Wichita County.			945	Wylie, Collin	557	R-3
	Farming and oil production.						
	Railroad shops. Glass factories, flour mills and oil refineries.			25	Yale, Franklin		T-3
	Hotels: Kemp. St. James, Joline, etc.			58	Yancey, Medina		N-10
50	Wied, Lavaca		Q-10	200	Yantis, Wood		T-3
75	Wieland, Hunt		S-3	100	Yarboro, Grimes		S-8
1000	Wiergate, Newton		W-7	40	Yard, Anderson		S-5
	Wightman, Newton		W-6	60	Yarrellton, Milam		Q-7
	Wilcox, Burleson		R-8	35	Yates, Kimble		M-8
25	Wilderville, Falls		R-7	75	Yellow Pine, Sabine		W-6
200	Wildhurst, Cherokee		U-6	25	Yew, Fannin		S-2
175	Wildorado, Oldham		B-2	6184	Yoakum, Lavaca	322	Q-10
50	William Penn, Washington		R-8		Farming, fruit and stock raising.	Railroad shops. Flour and oil mills, also, gins	
900	Willis, Montgomery	381	T-8		St. Regis Hotel.		
100	Willow City, Gillespie		O-8	15	York Creek, Guadalupe		P-9
76	Willow Point, Wise		P-3				

Pop.	Co.	Alt.	Key	Pop.	Co.	Alt.	Key
1723	Yorktown, De Witt	266	Q-11	250	ZAPATA, Zapata		N-15
	Farming, Flour and oil mills.				County seat of Zapata County.		
	Hotels: Smith & Two Sisters			25	Zapp, Fayette		R-9
50	Young, Freestone		S-5	100	Zavalla, Angelina		V-9
50	Youngsfort, Bell		P-7	200	Zephyr, Brown		N-6
50	Yowell, Delta		S-2	100	Zigzag, Medina		N-10
900	Ysleta, El Paso	3652	A-6	100	Zorn, Guadalupe		P-9
				100	Zuehl, Guadalupe		O-10
				150	Zulch, Madison		S-7
				120	Zybach, Wheeler		D-2

## CONDENSED FACTS ABOUT TEXAS

The population is, 4,661,027. Austin is the State capital.

The total land area of Texas is 262,398 square miles, with a water area of 3,498 square miles. The extreme length north and south is about 735 miles, while the breadth east and west is about 775 miles.

El Capitan, 9,020 feet altitude, is the highest point in the State. Other high points are: Baldy Peak, or Mt. Livermore, 8,382 feet; Sierra Blanca, 7,000 feet; Franklin Mountains, 7,152 feet, and South Franklin Peak, 5,591 feet. The two latter are situated just north of El Paso.

The principal forests are in East Texas, and the prevailing growth is pine. In the western part of the forest region oak, hickory and ash are common.

Texas became a Republic in 1836. In 1845 it was annexed to the United States, becoming a State.

The Bluebonnet is the State flower.



Photo by J. K. MELTON

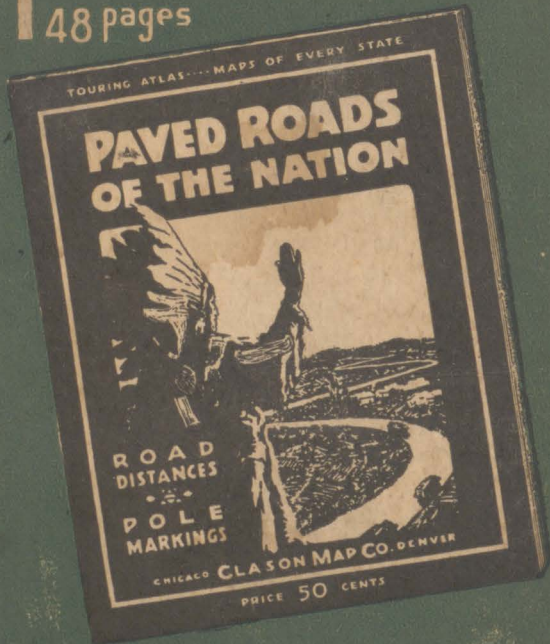
The Annual Peach Crop of Texas Is 4,000,000 Bushels

**CLASON'S TABLE OF  
SHORTEST RAILROAD DISTANCES  
BETWEEN TEXAS TOWNS  
DISTANCES IN MILES**

Abilene  
Amarillo  
Austin  
Beaumont  
Brownsville  
Dalhart  
Dallas  
Del Rio  
El Paso  
Fort Worth  
Galveston  
Houston  
Laredo  
Palestine  
Paris  
San Angelo  
San Antonio  
Sherman  
Texarkana  
Waco

Abilene	301	284	469	649	383	192	533	432	101	333	384	516	334	290	89	333	254	377	199	
Amarillo		556	656	921	82	367	805	507	336	660	655	788	511	409	377	635	349	563	426	
Austin			250	365	638	209	249	698	220	214	106	232	180	307	254	79	313	361	109	
Beaumont	469	656	250		456	738	289	464	913	320	76	84	446	199	347	329	283	353	288	270
Brownsville	649	921	365	456		1003	574	456	905	585	373	372	286	545	672	619	286	678	726	474
Dalhart	383	82	638	738	1003		449	887	425	418	742	694	870	593	491	459	717	431	585	508
Dallas	192	367	209	289	574	449		458	644	31	296	248	441	144	98	269	288	64	194	100
Del Rio	533	805	249	464	456	887	458		453	469	410	380	323	429	556	503	170	560	600	358
El Paso	452	507	698	913	905	425	644	453		613	859	829	772	788	742	515	619	706	829	651
Fort Worth	161	336	220	320	585	418	31	469	613		324	276	452	175	129	238	299	98	216	90
Galveston	333	660	214	76	373	742	296	410	850	324		48	363	199	400	487	240	366	380	234
Houston	384	655	166	84	372	694	248	380	829	276	48		363	151	346	438	210	312	306	185
Laredo	516	738	232	446	286	870	441	323	772	452	393	363		412	539	486	183	524	583	341
Palestine	334	511	180	199	545	393	144	429	788	175	199	151	412		202	380	299	208	181	135
Paris	290	409	307	347	672	491	98	556	742	129	400	346	539	202		367	386	601	91	219
San Angelo	89	377	254	329	619	459	269	503	515	238	487	438	486	380	367		333	331	454	253
San Antonio	363	635	79	293	286	717	288	170	619	299	240	210	153	289	386	333		390	440	188
Sherman	254	349	313	353	678	431	64	560	706	93	366	312	524	208	60	331	390		154	133
Texarkana	377	503	361	288	726	585	194	600	829	216	380	306	583	181	91	454	440		154	238
Waco	199	426	109	270	474	508	100	358	651	90	234	185	341	135	219	253	188	183		258

~ CLASON'S NEW ~  
**TOURING ATLAS**  
48 pages



SHOWING THE BEST ROADS AND  
ROUTES TO ALL PARTS OF THE UNITED  
STATES ~ HANDY TO USE IN THE CAR.  
SIZE 9 X 11½ IN. POSTPAID ON RECEIPT OF PRICE