



## TRAVEL WITH GREEN GUIDES

ANY STATE 35 CENTS

Clason Green Guide Road Maps tell what every traveler wishes to know:

Lists of Hotels, Counties, Towns, Educational institutions, State Institutions, National Parks, Scenic Wonders, Logs of Motor Trails, State Road Laws, Downtown City Maps.

### THREE LARGE MAPS IN EACH GREEN GUIDE

**MILEAGE AND PAVED ROAD** State Map showing the best roads, pole markings and distances between towns.

**MILEAGE UNITED STATES MAP** showing Transcontinental Trails, improved roads and distances between cities.

**RAILROAD AND COUNTY** State Map showing location of all cities, towns and postoffices with complete index of populations.

*If your dealer cannot supply Green Guides they will be sent prepaid, upon receipt of price, by the publisher.*

**THE CLASON MAP CO., Chicago - Denver**

PAVED ROADS - ROAD DISTANCES - POLE MARKINGS

35¢

CLASON'S

# TEXAS

GREEN GUIDE  
ROAD  
MAP



**THE CLASON  
MAP CO.  
CHICAGO - DENVER**

23  
28  
21  
18  
H.O.  
130

# CLASON'S TEXAS GREEN GUIDE

STATE AND CITY MAPS, AUTO ROAD LOGS,  
RAILROADS, COMMERCIAL INDEX OF  
TOWNS, GIVING HOTELS, INDUSTRIES,  
ALTITUDES, POPULATION, ETC.



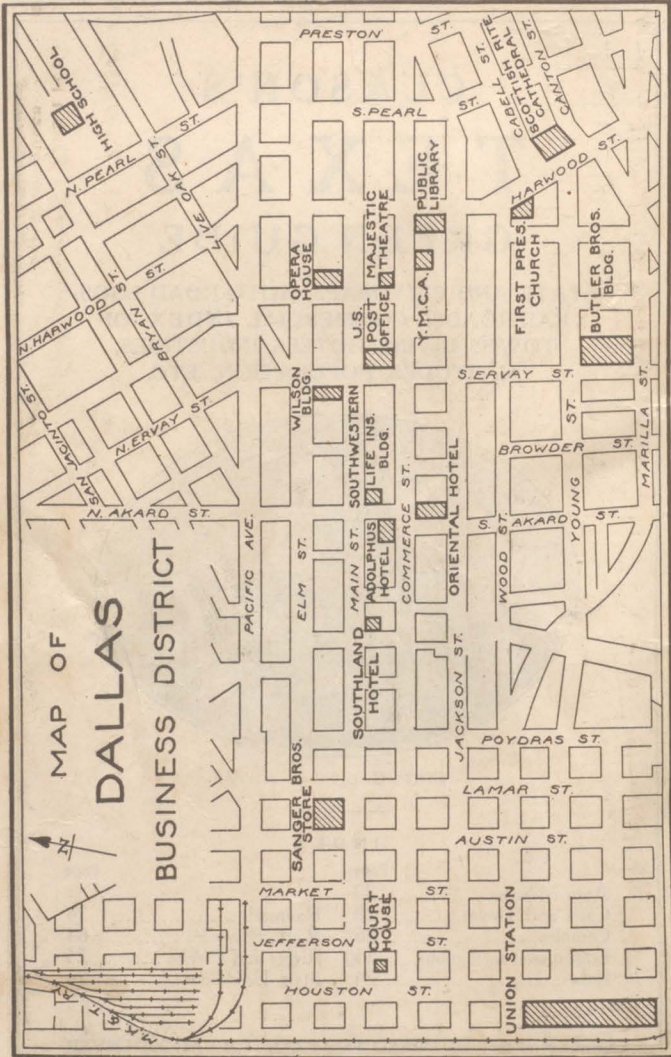
State Capitol at Austin

## INDEX

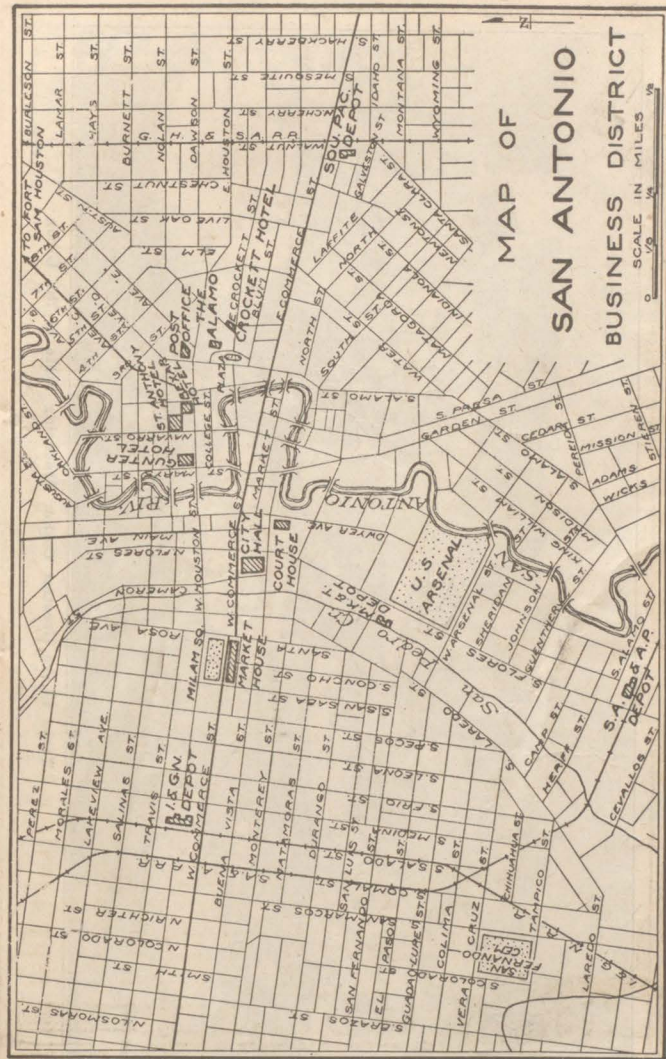
	Page		Page
Auto Mileage.....	23	Railroads.....	24
Cities and Towns.....	28	R. R. Distances.....	64
Counties.....	26	Rivers and Creeks.....	25
Educational Institutions.....	25	State Institutions.....	25
Lakes.....	24		

Published by THE CLASON MAP CO., CHICAGO, DENVER

Copyrighted by the Clason Map Co.



MAP OF DALLAS BUSINESS DISTRICT  
Showing Location of Depots, Hotels and Public Buildings



MAP OF SAN ANTONIO BUSINESS DISTRICT  
Showing Locations of Depots, Hotels and Public Buildings



Texas Is the Greatest Cotton Producing State in the Union

Photo By J. K. MELTON  
 111 CENT. R. R. CHICAGO  
 ILL.



## THE LAND OF BIG OPPORTUNITIES

The largest thing in the United States is the State of Texas. The Lone Star State, as it is familiarly known, contains one-twelfth of the tillable area of the whole United States. If farmed intensively, this State could produce all the food needed by our hundred million citizens, including meat, bread, butter, milk, eggs, sugar, honey, vegetables, fruit, berries, nuts, fish, oysters and a vast assortment of other things. More than this, there is ample gas and coal within the State of Texas to cook it as well.

Texas needs more farmers to till her fertile acres, and more manufacturers to utilize the products grown here and develop the natural resources and raw materials that occur in such profusion.

### FARM TEXAS THOROUGHLY AND EVERYONE CAN EAT

The arable lands of Texas, if thoroughly cultivated, could produce far more farm products than any other State in the Union. Already it ranks amongst the Big Three which, according to the Annual Report of the U. S. Department of Agriculture, produce annually the greatest total value of farm products. Iowa and Illinois, neither of them having over one-fifth the total area of Texas, are this State's only contenders for first place. Lack of man-power to properly cultivate its lands is the only drawback that keeps Texas from outstripping all other States in farm production.

Texas needs farmers to settle and develop the vast areas of high-grade lands now used as open cattle ranges and to intensively farm immense areas that are now cultivated only in a superficial way. To the farmer



Take a GREEN GUIDE with you, and you never will go wrong

who comes to Texas now the State can offer the rarest and richest crop a farmer ever has.

### THE RICHEST CROP EVER HARVESTED

Land values in many parts of Texas are comparatively low at the present time. It is demand that regulates the price of land, and when there is more land than the population can use to the best advantage, the value is naturally low in sympathy with the lack of demand. To the new settler Texas offers the most profitable harvest that any farmer ever reaped—the increase in the value of his land. This is the one crop that has made the farmer of our great farming States rich without work. There is only one such crop off the land, and the time to plant is now, and the place is Texas.

### WHERE THOSE BALMY BREEZES BLOW

Covering an area equal to the size of half a dozen States, Texas naturally has climates and climates. Along the four hundred miles of Gulf Coast, the climate is tempered to semi-tropical by the breezes off the Gulf, being warmer in winter and cooler in summer than it would otherwise be. During the winter months the Gulf Coast country is one great health resort, to which visitors come by the thousands to enjoy the luxury of the tropical winter. In the northern portions of the State, and especially in the Panhandle country, the winters are of the kind to be found in any mildly semi-temperate zone. Texas winters outside of the Gulf area include occasional snow storms, or what the natives term "northwesters." However, it can be truthfully said that Texas has no regions of arctic cold or equatorial heat, the temperature for the State in general being mild.



Photo Courtesy  
ROCK ISLAND ROUTE

Crop of Maize, Showing Results of Careful Farming in the Panhandle Near Dalhart



Threshing the Rice Crop

### THE SHORT HAUL TO MARKET

Texas now produces less farm products than it consumes. Millions of dollars worth of hay, grain and edibles are imported into the State each year to make up the shortage of home production. The home market is the shortest haul every time. This is the market that the new settler will find very profitable. In addition to the home markets, the farmer in Texas has the advantage of a network of local railroads covering all the best agricultural districts and connecting with trunk lines to the Gulf ports and to the larger cities of the Middle West.

The stockyards of Chicago, Kansas City, St. Louis and Denver are easily accessible from all parts of the State, while Fort Worth is the most important local market for cattle, hogs and sheep. Houston, Dallas and San Antonio are also live stock markets of considerable proportions.

Galveston, the great Gulf port, is the second largest exporting port of the entire United States, and has direct railroad communication with all sections of the State. From Galveston is a convenient outlet for farm produce to the big ports, not only of America, but of all the foreign countries.

### WHAT GROWS BEST UNDER TEXAS SKIES

Cotton is far in the lead as the State's most important agricultural product. Texas, which produces twice as much cotton as any other State and five times as much as most of the cotton producing States, easily takes the lead as the most important producer of cotton in the Union.

Corn is second in importance to cotton, this being one of the leading corn-producing States in the Union.

Other important farm products are winter wheat, oats, sweet potatoes, rice, hay, peanuts, sorghums, peas, beans, garden vegetables, potatoes, melons, etc.

Fruits and nuts are of great commercial importance. Texas citrus fruits grown along the Gulf Coast include oranges, grape-fruit and lemons. These are justly prized for their fine quality and flavor wherever known. Figs are especially adapted to the soil and climate of the Gulf Coast and are great revenue producers.

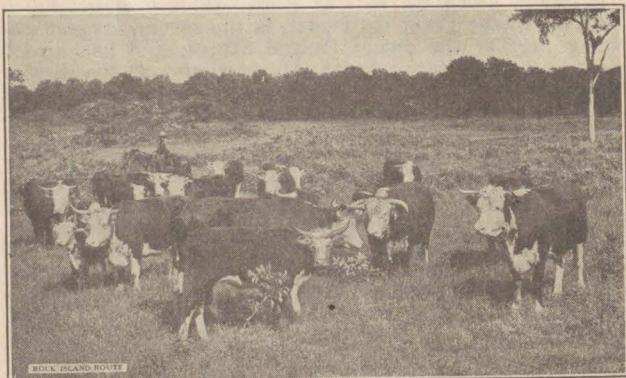
Texas pecans are shipped North in many carloads each year, where they usually bring fancy prices. As high as one dollar per pound is frequently received for the thin-shelled varieties and fifty cents a pound for the native varieties. About twenty million bushels is the annual yield of the State's pecan trees.

Strawberries, blackberries and dewberries succeed remarkably well along the Gulf Coast. The vineyards of south-central Texas have been famous for almost a century, the fine points of grape culture having been introduced by the Spanish priests. Apples of the finest quality, as well as pears, apricots and California grapes, do well in the mountain valleys in the southwestern part of the State, where water for irrigation can be secured. The annual peach crop of the State is about four million bushels.

From the above, some idea can be gained of the extent and diversity of the fruits and grains that can be raised in the Lone Star State.

#### THE SUCCESSOR OF THE LONGHORNED TEXAS STEER

In the production of livestock Texas easily maintains first place. A large part of the meat supply of this coun-



The Longhorn Has Given Place to the Thoroughbred



Two Million Angora Goats in Texas Do Their Bit

try is represented by the cattle feeding upon the vast ranges in this State. But a few years ago most of the State of Texas was one vast open range. Things have changed in late years, ranches have been fenced and gradually reduced in size, but still the livestock industry is carried on in many sections on a gigantic scale. Range cattle continue to be first and most important in value of the livestock industry. Cattle from Texas ranges are shipped North by the trainloads each year to be fattened and finished for market in the grain-producing States of Colorado, Kansas, Nebraska, Iowa and Illinois. The long horned Texas steer of the early days is now succeeded by the Hereford, the Holstein and other high-grade beef cattle.

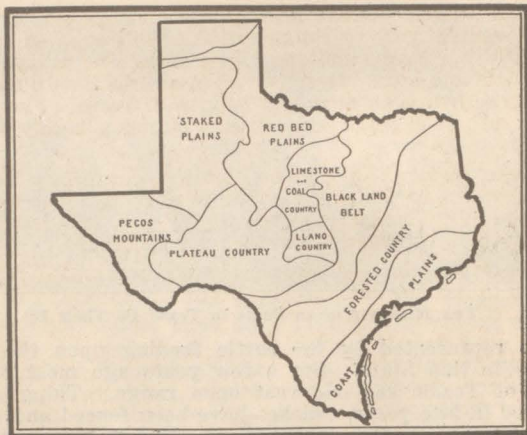
Texas ranks very important also for the production of horses, mules, sheep, hogs and angora goats. Of angora goats alone it is estimated that there are over two million in the State.

#### AN EMPIRE OF NINE KINGDOMS

Texas can be divided by soil and topography into nine general districts, the location of which is outlined in a general way on the accompanying map, for which we are indebted to the Agricultural Department of the Rock Island Route and to Prof. H. M. Cottrell, the well-known authority on agriculture in the Southwest.

Coast Plains—These are flat, almost level prairie, lying along the coast. Over a considerable part of these plains the slope is so slight that the rainfall has no run-off, and drainage is the important problem. The rice fields which make Texas rank second among the rice-producing States,

I asked an officer of the Farmers' Union in Texas: "If the farmers of Texas have five more years as prosperous as the last five have been, how rich will they be?" He thought a moment and said deliberately: "There ain't that much money."—World's Work.



Map Showing Names of Localities

are in the eastern part of these plains. In the central portion of these plains truck gardening and fruit growing are important industries. There are many oil wells in this district.

**Forest Area.**—The country is undulating to hilly, and generally covered with timber. The pine forests and the great lumber industry of the State are located in the eastern part of this area. It is estimated that there are still standing twenty-five billion feet of pine and ten billion feet of hardwood. There are enormous deposits of lignite coal in this district.

**Black Land Belt.**—Named from the famous black, waxy prairie soils. This is the richest agricultural district in the State, and includes the cities of Fort Worth, Dallas, Austin and San Antonio. This is the corn and cotton section of Texas, although other parts of the State are adapted to these crops.

**Llano Country.**—Is hilly and rugged. It has large deposits of iron. In the northern part is artesian water and a rich, clay soil.

**Limestone and Coal Country.**—Large beds of bituminous coal. The country generally underlaid with limestone. Some irrigation has been started.

**Red Bed Plains.**—Great prairies with red clay soils. A great grazing country, well adapted to the raising of feed crops, and to raising and feeding of hogs and beef cattle, and to dairying.

**Staked Plains.**—Great level grass-covered plains, once given over entirely to range cattle. Well adapted to the raising of milo, cane and other feed crops, and to dairying, beef cattle and hogs. Over one million acres in this district is underlaid with an abundant supply of water, at so shallow a depth as to make irrigation by pumping highly profitable.

**Plateau Region.**—A plateau country, cut up by breaks and canyons, particularly adapted to grazing. The valleys are good farm lands; the rainfall is light, and irrigation is advisable wherever water can be secured.

**Pecos Mountains.**—A rough mountain country, largely devoted to grazing cattle. This section is cut up by several mountain ranges, with many breaks and canyons, and considerable areas of level land and valleys. It contains the highest mountains in the South, among them being El Capitan, 9,020 feet, and Baldy Peak, 8,382 feet. The quicksilver mines of the State are in this district.

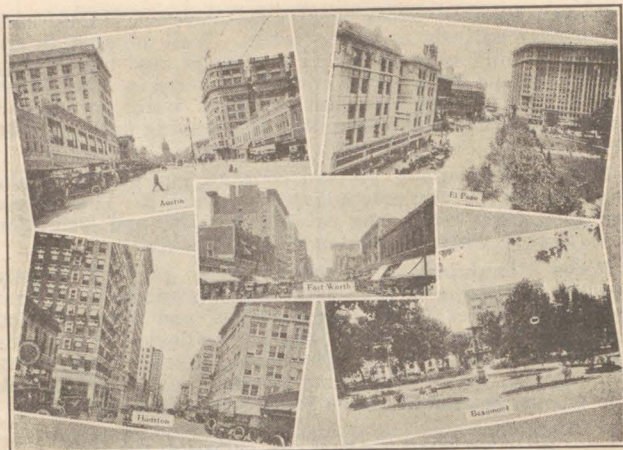
#### WHERE THE GASOLINE COMES FROM

Texas is one of the greatest oil-producing districts in the whole world. One-fourth of all the oil produced in the United States is refined in Texas. Oil is found in many districts located in widely separated parts of the State. The extent and continuity has not yet been determined and probably will not for some time to come. Geologists consider that one of the world's greatest deposits of petroleum is now being opened up in Texas, and time alone can determine its extent and value.

Oil millionaires are one of Texas' most noticeable crops. The development of the oil industry has created a new crop of millionaires so extensive as to overshadow the fortunate ones of all the other great booms of history.

Eastern Texas is crossed and recrossed with oil pipelines carrying the product of the wells to the refineries and to the Gulf ports for shipment. Enormous refineries are a common addition to the rural landscapes.

Among the better known fields in point of production are: Burkburnett, Wichita Falls, Ranger, Goose Creek, Humble, Electra, Sour Lake, Breckenridge, West Columbia, Brownwood, Comanche, DeLeon, Batson, Damon's Mound, Spindletop, Petrolia, Hull, Saratoga, Moran, Archer, Iowa Park, Clay and Navarro counties. There are many others of equal fame and importance, with new discoveries being frequently made. Energetic drilling and development work is being carried on on a gigantic scale over an enormous area.



Business Districts of Leading Texas Cities

## TEXAS THE WINTER RESORT

### RECREATION AND BUSINESS FEATURES OF THE LEADING CITIES

All of the cities of central and eastern Texas are natural winter resorts to which thousands of visitors flock to avoid the northern winters. Here the visitor can stay in the open picking oranges, oleanders and roses, or bathing in the surf of the Gulf, forgetful of the zero mark on the thermometer.

There are numerous large and well-equipped resort hotels adjacent to natural playgrounds. The golf links, equal to the best in the country, are kept in condition for use every day in the year. For those who enjoy yachting, the land-locked bays along the coast offer

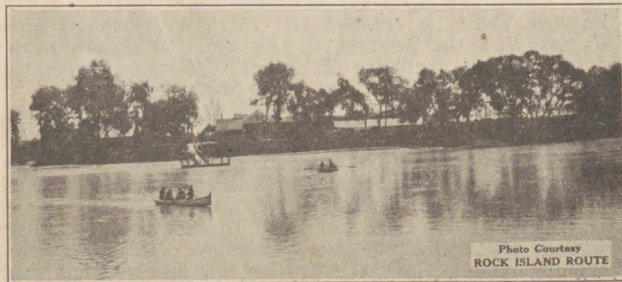


Photo Courtesy  
ROCK ISLAND ROUTE

The Rio Grande, International Boundary Between the United States and Mexico

ideal courses. Surf bathing and the finest of fishing can be enjoyed all the year. Game birds in unbelievable quantities, geese, ducks, quail and snipe, make their winter homes here.

**DALLAS.**—The largest city of the State and one of the liveliest, most up-to-date towns on earth is Dallas, on the Trinity River. Here is a modern little city with sky-scrappers of the latest designs, fine theaters, country clubs, golf courses, parks, boulevards, colleges and everything else that most any other city can boast of.

Dallas is the great jobbing center of the State. It is the commercial hub of Texas. Here are several hundred factories. Here is a great inland cotton market. Here, also, is the cordial handshake of friendship and the true spirit of southern hospitality.

Good hunting and fishing are to be had near Dallas. Newly surfaced highways offer alluring drives through the wonderful farming country surrounding the city. Dallas is a cosmopolitan winter resort in every sense of the word.

**HOUSTON.**—One of the commercial cities of Texas is Houston, located but fifty miles from the Gulf. Here is an important railroad center, with manufacturing as its greatest asset. Lumber, oil, rice and cotton are the important industries, backed up by a large jobbing trade.

Houston is also a modern, up-to-date city, with many sky-scrappers, fine hotels, shops and theaters. It has a ship channel connecting with the Gulf, making it a shipping port.

Houston offers many interests to the winter visitor. It is known as the city of flowers, and this stands for a great deal along the Gulf Coast, where flowers are so abundant. There is a good eighteen-hole golf course at one of the most attractive country clubs of the South. Good duck and wild turkey hunting can be had nearby. The shell roads, fine and plentiful, winding through parks and woods, are a joy to the automobilist. Excellent hotel accommodations are provided for the visitor.

The battle of San Jacinto was fought at Houston and the battlefield is now a State park. In this battle, General Sam Houston, bitter with the remembrance of the massacre of his comrades at the Alamo and Mission Goliad, attacked on April 21, 1836, the superior forces of Santa Ana and completely annihilated them and freed Texas from Mexican domination forever.

**SAN ANTONIO.**—Here is a land of perpetual springtime where

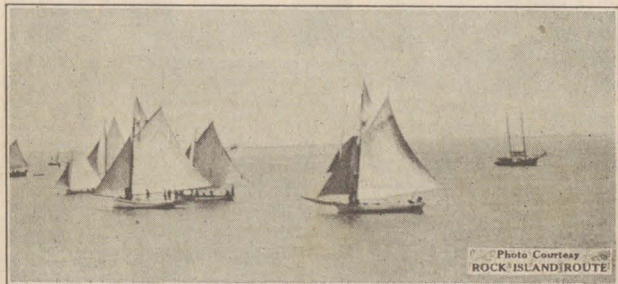


Photo Courtesy  
ROCK ISLAND ROUTE

Yachting on Galveston Bay



roses bloom in winter and where palms and semi-tropical fruits can be found in abundance. San Antonio is liberally supplied with first class hotels, where the tourist can be sure of bright social life. It is a far-famed health resort, with many curative sulphur wells.

While San Antonio is quite a ways from the coast, it is not far from Medina Lake, a considerable sized body of water between towering cliffs, that will appeal to all who love good bass fishing.

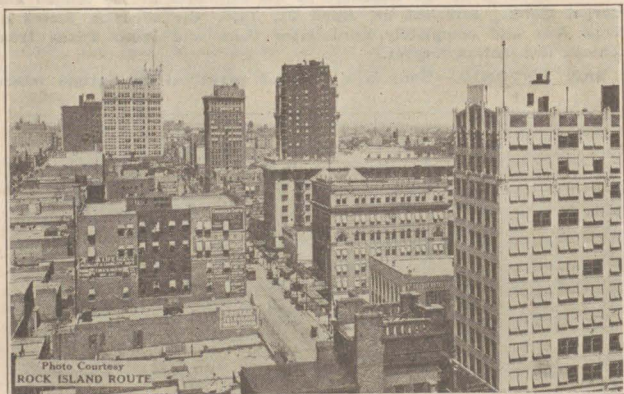
San Antonio is located in a farming and stock raising district and is quite a commercial and railroad center. The winter visitor will find a modern city with a variety of amusements and numerous places of scenic and historic interest to visit.

The Alamo, shrine of Texas patriotism, stands in the center of the city. Here Bowie, Crockett and Travis, with less than two hundred men, stood out to the bitter end against a force of four thousand Mexicans, and with their lives helped pay the price of Texas liberty in 1836.

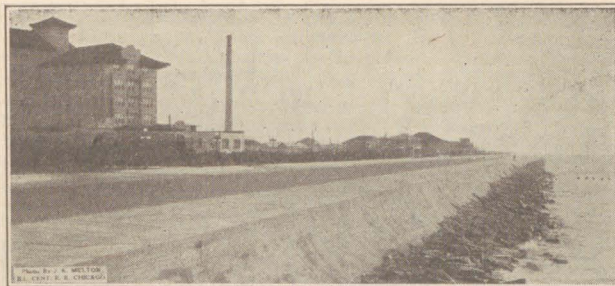
In the vicinity of San Antonio are the picturesque ruins of several Franciscan missions built about 1700. Many of these are still in a remarkable state of preservation. Most wonderful of these is Mission San Jose, built in 1720. Its ruined walls, cloisters and towers, its stately and carving, are ranked among the finest examples of Spanish art and architecture.

**FORT WORTH.**—In the cattle and oil country of northern Texas is the city of Fort Worth, which commends itself to tourists by reason of its genial climate and many points of interest. In the early days it was the big cow town. It is still the big cow town, but now in the sense of a modern market for livestock. In the early days of March each year, the city holds a livestock show that brings forth the best blooded horses, cattle and other livestock that have replaced the longhorns and cow ponies of pioneer days.

Fort Worth is a busy modern city with wonderful boulevards along the Trinity River and around Lake Worth. It has a number of



Downtown in Dallas



Note the Curve of the Famous Galveston Sea Wall, Which Throws Waves Up and Back

modern hotels. The mean annual temperature is 65 degrees, snow rarely falls and the freezing point is seldom reached.

**GALVESTON.**—The great Gulf port of Texas is located on an island. Surrounded by the warm waters of the Gulf Stream, the pleasure seeker in Galveston may spend the entire time out of doors.

Salt-water fishing as fine as offered anywhere can be enjoyed here. Tarpon, Spanish mackerel, speckled trout, redfish, pompano, all are here and in fighting trim. Hunting will be found on a short auto trip into the mainland to the heart of the quail and jacksnipe country. Deer and bear hunting may be had at no great distance.

Galveston County, with its two hundred miles of shell-surfaced roads and thirty miles of hard packed beach, offers real bliss for the motorist. Along the beach there is no speed limit.

To accommodate the constantly increasing winter visitors, Galveston has an assortment of modern hotels, suited to all tastes and all pocketbooks.

**CORPUS CHRISTI.**—Overlooking the broad expanse of Corpus Christi Bay is the city of Corpus Christi, the Naples of the Gulf, endowed by nature as a health and pleasure resort. Corpus Christi knows none of the rigors of a northern clime. Here the winters are always mild and open.

The city is well equipped with good hotels and rooming houses. In addition to these are hundreds of cozily furnished cottages to be had at reasonable rentals. Golfing, motoring, boating, fishing and bathing are among the daily recreations.

Motoring to the inland country is a favorite trip. A new two-mile causeway, spanning Nueces Bay, provides a splendid auto road to Rockport, Aransas Pass and nearby points.

**BEAUMONT.**—In 1900, when 20,000-barrel gushers began spouting on Spindle Top, Beaumont became world-famous in a day. The oil industry is represented now by four large refineries. The climate of Beaumont is similar to that of the other Gulf Coast resorts. Fishing, boating, hunting, motoring, golf and surf bathing are all available. Duck, geese, quail and other game abound. In the Big Thicket, twenty miles away, is still greater excitement for the hunter. Here can be found turkeys bear and other large game.

There are more than a hundred miles of hard-surfaced roads near the city. Hotels provide ample accommodations.



Winter Time at Corpus Christi

**PORT ARTHUR.**—Although one of the newest of the southern seaports, the docks and shipping facilities of Port Arthur make it one of the largest and most complete along the Gulf Coast. It is not located on the Gulf itself, but on Lake Sabine, and connected with the Gulf by a deep waterway.

Being also connected with the adjacent oil fields by pipe-lines, Port Arthur ships vast quantities of oil to all parts of the world. The rice and lumber industries are important.

Port Arthur has a climate that is the delight of the winter visitor and ideal for all outdoor sports. Here will be found excellent fishing, boating, bathing, tennis and golf. Plenty of hotel accommodations.

**WACO.**—In central Texas is the busy commercial city of Waco, built on the site of an old Indian village of the same name. Waco is an important jobbing and railroad center. It is considered one of the prettiest cities in the State and is noted for the number and beauty of its parks.

There is bathing and boating in the Bosque and Brazos Rivers, which flow together just outside the city. There is a good golf course, excellent roads and many other things that please the visitor.

The Texas Cotton Palace Exposition is held here during November of each year, continuing for two weeks.

**AUSTIN.**—The capital of the Lone Star State is Austin. The state house building is considered one of the finest buildings in the country and among the largest of the nation's public buildings. Here will be found the State Library and an extensive State Museum, with a liberal collection of historic relics.

Travis County has a thousand miles of excellent automobile roads. Lake Austin and the Colorado River give ample opportunity for bathing, boating and fishing. Austin enjoys a delightful winter climate. The hotel accommodations are of the best.

**EL PASO.**—The metropolis of western Texas is El Paso, the gateway city, located where Texas, New Mexico and Old Mexico join. El Paso is an important railway terminal, the headquarters for the mining interests of this section and a military headquarters. Just across the Rio Grande, which is bridged here, is the quaint, bedraggled old Mexican town of Juarez. A short street car ride takes the visitor from the modern American city, with its beautiful parks and buildings, into this town of adobe huts typical of the primitive life just across our border.

El Paso has short, dry winters and the many parks and plazas are pleasant loafing places. There are many fine hotels and an eighteen-hole golf course. Near El Paso is the wonderfully fertile irrigated district of the Rio Grande Valley.

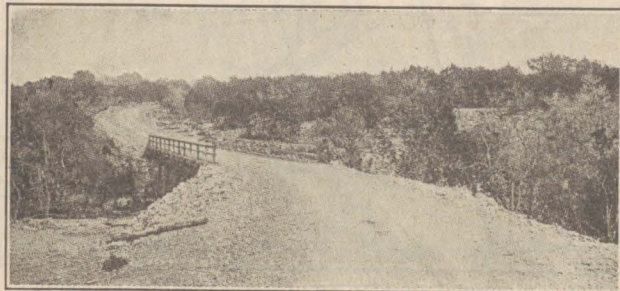
**MARLIN.**—Thirty miles south of Waco is Marlin, the water of whose hot mineral wells possesses exceptional medicinal qualities. Modern sanitariums, hotels and bath-houses will be found here. There is fishing in the Brazos River and many beauty spots along its banks.

The city is on various State and National highways, so enjoys good roads. Here each spring come the New York Giants to prepare for the pennant race.

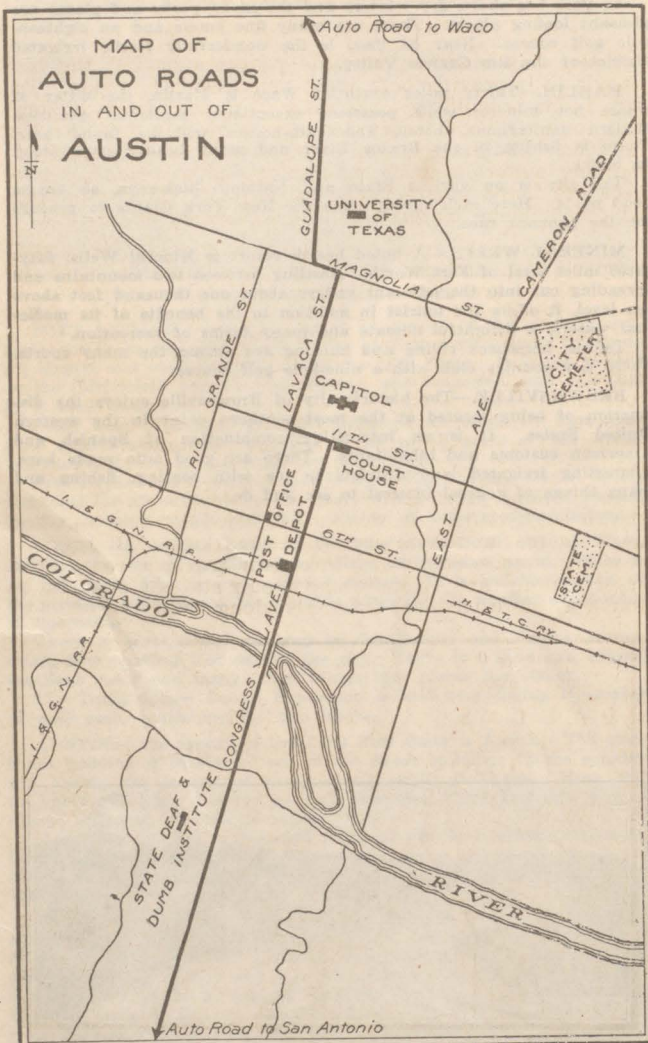
**MINERAL WELLS.**—A noted health resort is Mineral Wells, fifty-three miles west of Fort Worth. Nestling between two mountains and spreading out into the adjacent valleys about one thousand feet above sea level, it offers the tourist in addition to the benefits of its medicinal waters, a delightful climate and many forms of recreation.

Tennis, horseback riding and hunting are among the many sports. There is a country club with a nine-hole golf course.

**BROWNSVILLE.**—The historic city of Brownsville enjoys the distinction of being located at the most southern point in the western United States. It is an interesting combination of Spanish and American customs and inhabitants. There are good auto roads here, interesting irrigated land districts to see with boating, fishing and many things of general interest to see and do.



"Good Roads" Is the Battle Cry of Texas



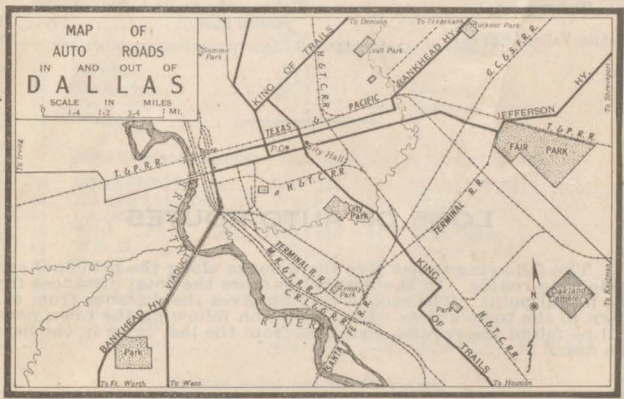
MAP OF AUTO ROADS IN AND OUT OF AUSTIN

## AUTOMOBILE ROAD SECTION IMPROVING THE BYWAYS

Texas has made remarkable progress during the last decade in improving both main and secondary roads. Today Texas is building more roads than ever in its history, and its road bond issues for new work run far into the millions. The State has an abundance of exceptional road-building materials in its mountains and plateaus. Gravel beds are found in practically all parts of the State, from which surfacing material can be secured at small cost.

Considering its great size, Texas is already fairly well supplied with surfaced roads. In the southern part of the State shells are used and many miles of fine boulevards are surfaced with this material. Through the northern part, and especially in the black land belt, roads are being surfaced with gravel, and in some cases with bituminous material. In Western Texas the abundance of gravel and rock makes it possible to have good roads without an excessive burden on the taxpayers in this sparsely settled region. The dry climate insures the permanency of these roads.

In planning cross-state trips it is always wise to select the through routes, as indicated in the following logs and by the names and more pronounced marking on the accompanying map. These are the main traveled routes and receive more care. Supply and repair stations can also be found at more frequent intervals along these routes.



## MAIN ROUTE POLE MARKINGS

Name	Pole Marking	Key to Map
Amarillo-Wichita Highway		C-2
Austin-San Antonio Post Road		P-9
Bankhead Highway	BH on yellow and white (white band or AA in circle)	H-6
Borderland Route		E-5
C. A. M. A. A.		O-3
Choctaw Trail		
Colorado to Gulf Highway	Colorado to Gulf and arrow	C-3
Dallas-Canadian-Denver Highway	D.C.D Highway and star	D-1
Del Rio-Canadian Highway	DRC4	L-8
Diamond Loop Highway	Diamond	N-15
Dixie Overland Highway (Dixie Highway)	D.O.H. on yellow and black	G-3
East Texas Highway		
Exall Highway (Henry Exall Memorial Hy.)		R-8
F. F. Highway		B-4
Fort Worth-El Paso Highway		E-6
Great Plains Road		L-6
International Paved Way		S-2
Jefferson Highway	JH on blue, white and blue	T-3
Jefferson Davis Memorial Highway		Q-13
Jimm Hogg Highway		T-5
King of Trails	KT on yellow	R-7
Lone Star Trail	Golden Star	M-5
Meridian Highway	Red MH on white band	P-9
North Texas Highway		P-2
Ocean to Ocean Highway		T-2
Oil Belt Highway	OB	N-4
Oil Cities Highway	C in O on white	P-1
Oklahoma, Texas & Gulf Highway	Black, gold and black	R-1
Old Spanish Trail	Red and yellow	S-4
Ozark Trails	OT, white on green	B-3
Postal Highway	Black and white	A-3
Puget Sound to Gulf Highway	Blue and red	K-6
Southern National Highway		O-10
South West Trail	SW on white	M-6
Stone Fort Highway		N-1
Star Highway		
State Highway No. 1	Highway No. 1 with black and white parallel lines	T-3
Wichita Valley Highway	WV	N-2

## LOGS OF AUTO ROUTES

The following tables give the mileage along the principal cross state auto routes. In the first column are the total distances from the initial point. The second column gives the distance from each town to the town above. In the column following the town names will be found the reverse distances from the last town in the list to the first:

### Austin to Houston

0	0	AUSTIN	177	127	69	Hempstead	50
26	26	Elgin	151	177	50	HOUSTON	0
58	32	Giddings	119				

## Bankhead Highway and Other Roads—El Paso to Texarkana

21

0	0	EL PASO	931	650	23	Weatherford	281
89	89	Sierra Blanca	842	681	31	FT. WORTH	250
122	33	Van Horn	809	714	33	DALLAS	217
197	75	Toyah	734	733	19	Plano	198
217	20	Pecos	714	779	44	Whitewright	152
347	130	Midland	584	794	15	Bonham	137
368	21	Stanton	563	811	17	Honey Grove	120
391	23	Big Spring	540	834	23	PARIS	97
432	41	Colorado	499	853	19	Detroit	78
461	29	Sweetwater	470	866	13	Clarksville	65
505	44	ABLENE	426	909	43	New Boston	22
547	42	Albany	384	931	22	TEXARKANA	0
627	80	Mineral Wells	304				

### Borderland Route—Guymon, Okla., to Roswell, N. M.

0	0	Guymon	475	224	68	Plainview	251
26	26	Texhoma, Okla.	449	279	55	Lubbock	196
46	20	Stratford, Tex.	429	328	49	Brownfield, Tex.	147
134	88	AMARILLO	341	475	147	ROSWELL, N. M.	0
156	22	Tulia	319				

### Colorado to Gulf Highway—Galveston to Clayton, N. M.

0	0	GALVESTON	868	440	19	Bowie	429
51	51	HOUSTON	817	469	29	Henrietta	399
90	39	Conroe	778	489	20	WICHITA FALLS	379
122	32	Huntsville	746	518	29	Electra	350
152	30	Madisonville	716	542	24	Vernon	326
219	67	Teague	649	558	16	Chilliothe	310
234	15	Mexia	634	574	16	Quanah	294
265	31	CORSICANA	603	605	31	Childress	263
301	36	Waxahachie	567	644	39	Memphis	224
331	30	DALLAS	537	674	30	Clarendon	194
352	21	Arlington	516	736	62	AMARILLO	132
366	14	FT. WORTH	502	821	85	Dalhart, Tex.	47
407	41	Decatur	461	868	47	Clayton, N. M.	0
421	14	Alvord	447				

### Dallas-Canadian-Denver Highway—Childress to Guymon, Okla.

0	0	Childress	235	124	45	Canadian	111
34	34	Wellington	201	171	47	Ochiltree, Tex.	64
61	27	Shamrock	174	235	64	Guymon, Okla.	0
79	18	Wheeler	156				

### Dixie Overland Highway—Shreveport, La., to Roswell, N. M.

0	0	SHREVEPORT, La.	758	298	23	Mineral Wells	460
43	43	MARSHALL, Tex.	715	378	80	Albany	380
66	23	Longview	692	420	42	ABLENE	338
106	40	Tyler	652	464	44	Sweetwater	294
159	53	Wills Point	599	472	8	Roscoe	286
174	15	Terrell	584	509	37	Snyder	249
189	15	Forney	569	553	44	Post	205
211	22	DALLAS	547	581	28	Tahoka	177
231	20	Arlington	527	611	30	Brownfield	147
244	13	FT. WORTH	514	646	35	Plains, Tex.	112
275	31	Weatherford	483	758	112	ROSWELL, N. M.	0

### Houston to San Antonio, via Victoria

0	0	HOUSTON	247	102	28	Edna	145
30	30	Richmond	217	128	26	Victoria	119
33	3	Rosenberg	214	156	28	Cuero	91
61	28	Wharton	186	247	91	SAN ANTONIO	0
74	13	El Campo	173				

## Jefferson Highway—Durant, Okla., to Shreveport, La.

0	0	Durant, Okla.	304	176	18	Mt. Pleasant	128
23	23	DENISON, Tex.	281	188	12	Pittsburg	116
34	11	SHERMAN	270	208	20	Gilmer	96
53	24	Whitewright	246	236	28	Longview	68
99	41	GREENVILLE	205	260	24	MARSHALL	44
132	33	Sulphur Spgs.	172	304	44	SHREVEPORT	0
158	26	Mt. Vernon	146				

## King of Trails—Dallas to San Antonio

0	0	DALLAS	467	219	36	AUSTIN	248
15	16	Lancaster	452	252	33	San Marcos	215
31	16	Waxahachie	436	270	18	New Braunfels	197
47	16	Italy	420	301	31	SAN ANTONIO	166
68	21	Hillsboro	399	333	32	Floresville	134
84	16	West	383	364	31	Karnes City	103
102	18	WACO	365	370	6	Kenedy	97
140	38	TEMPLE	327	407	37	Beeville	60
165	25	Bartlett	302	437	30	Sinton	30
171	6	Granger	296	467	30	CORPUS CHRISTI	0
183	12	Taylor	284				

## King of Trails—Galveston to Durant, Okla.

0	0	GALVESTON	453	303	21	Italy	150
51	51	HOUSTON	402	319	16	Waxahachie	134
101	50	Hempstead	352	335	16	Lancaster	118
125	24	Navasota	328	350	15	DALLAS	103
154	29	Bryan	299	369	19	Plano	84
176	22	Hearne	277	384	15	McKinney	69
185	9	Calvert	268	402	18	Van Alstyne	51
220	35	Marlin	233	420	18	SHERMAN	33
248	28	WACO	205	420	10	DENISON	23
266	18	West	187	453	23	Durant	0
282	16	Hillsboro	171				

## Meridian Highway—Ft. Worth to Laredo

0	0	FT. WORTH	457	220	24	AUSTIN	237
36	36	CLEBURNE	421	253	33	San Marcos	204
73	37	Hillsboro	384	274	21	New Braunfels	183
107	34	WACO	350	304	30	SAN ANTONIO	153
146	39	TEMPLE	311	337	33	Devine	120
169	23	Bartlett	288	358	21	Pearshall	99
175	6	Granger	282	390	32	Cotulla	67
196	21	Georgetown	261	457	67	LAREDO	0

## Meridian Highway—Galveston to Burkburnett

0	0	GALVESTON	492	294	12	Itasca	198
51	51	HOUSTON	441	304	10	Grand View	188
101	50	Hempstead	391	319	15	CLEBURNE	173
125	24	Navasota	367	355	36	FORT WORTH	137
154	29	Bryan	338	396	41	Decatur	96
176	22	Hearne	316	410	14	Alvord	82
184	8	Calvert	308	429	19	Bowie	63
221	37	Marlin	271	458	29	Henrietta	34
248	27	WACO	244	478	20	WICHITA FALLS	14
265	17	West	227	492	14	BURKBURNETT	0
282	17	Hillsboro	210				

## Ocean to Ocean Highway and Other Roads—Texarkana to Wichita Falls

0	0	TEXARKANA	298	173	31	SHERMAN	125
23	23	New Boston	275	192	19	Whitesboro	106
67	44	Clarksville	231	207	15	GAINESVILLE	91
80	13	Detroit	218	232	25	St. Jo.	66
101	21	PARIS	197	250	18	Nocona	48
125	24	Honey Grove	173	278	28	Henrietta	20
142	17	Bonham	156	298	20	WICHITA FALLS	0

## Old Belt Highway—Burkburnett to Brownwood

0	0	Red River Bridge	246	95	28	Graham	161
2	2	Burkburnett, Tex.	244	161	66	Eastland	85
18	16	WICHITA FALLS	228	197	36	De Leon	49
47	29	Archer City	199	214	17	Comanche	32
67	20	Olney	179	246	32	Brownwood	0

## Old Spanish Trail and Other Roads—Orange to San Antonio and El Paso

0	0	ORANGE	1012	302	36	Seguin	710
24	24	BEAUMONT	988	337	35	SAN ANTONIO	675
69	45	Liberty	943	379	42	Hondo	633
112	43	HOUSTON	900	401	22	Sabinal	611
142	30	Richmond	870	423	22	Uvalde	589
145	3	Floresville	867	471	48	Brackettville	541
179	34	Eagle Lake	833	503	32	Del Rio	509
195	16	Columbus	817	613	110	Ozona	399
211	16	Weimar	801	731	118	Ft. Stockton	281
219	8	Schulenburg	793	792	61	Alpine	220
234	15	Flatomia	778	819	27	Marfa	193
246	12	Walden	766	925	106	Sierra Blanca	87
266	20	Gonzales	746	1012	87	EL PASO	0

## Ozark Trails—Tucumcari, N. M., to Mangum, Okla.

0	0	Tucumcari, N. M.	271	179	30	Clarendon	92
83	83	Vega, Tex.	188	227	48	Wellington, Tex.	44
119	36	AMARILLO	152	271	44	Mangum, Okla.	0
149	30	Claude	122				

## Port Arthur to Beaumont, Houston and Bay City

0	0	PORT ARTHUR	201	112	90	HOUSTON	89
22	22	BEAUMONT	170	201	89	Bay City	0

## Postal Highway—Clovis, N. M., to Sayre, Okla.

0	0	CLOVIS, N. M.	255	112	21	AMARILLO	143
11	11	Farwell, Texico	244	188	76	McLean	67
59	48	Hereford, Tex	196	208	20	Shamrock, Tex.	47
91	32	Canyon	164	255	47	Sayre, Okla.	0

## Puget Sound to Gul' Highway—Amarillo to Corpus Christi

0	0	AMARILLO	753	311	49	Sterling City	442
22	22	Canyon	731	354	43	San Angelo	399
62	40	Tulia	691	389	35	Paint Rock	364
90	28	Plainview	663	443	54	Brady	310
145	55	Lubbock	608	475	32	Mason	273
175	30	Tahoka	578	519	44	Fredericksburg	234
207	32	Lamesa	546	590	71	SAN ANTONIO	163
262	55	Big Spring	491	753	163	CORPUS CHRISTI	0

## San Jacinto Battlefield Trip

0	0	HOUSTON	44	44	23	E. Houston	0
21	21	San Jacinto Battlefield	23				

## South West Trail—Lawton, Okla., to Laredo and Austin

0	0	Lawton, Okla.	610	454	70	SAN ANTONIO	156
47	47	Burkburnett, Tex.	563	487	33	Devine	123
63	16	WICHITA FALLS	547	509	22	Pearsall	101
112	49	Olney	498	543	34	Cotulla	67
126	14	New Castle	484	610	67	LAREDO	0
186	60	Albany	424				
213	27	Bard	397	310	0	Brady	146
257	44	Coleman	353	366	56	Llano	90
310	53	Brady	300	398	32	Burnet	58
384	74	Fredericksburg	226	456	58	AUSTIN	0

## LAKES

Agua Negra.....	G-1	Sabine.....	W-9	Tahoka.....	H-3
Caddo.....	V-3	Salt.....	H-4	Toyah.....	F-6
Cunningham.....	H-3	Salt.....	F-5		
Ombiga.....	H-3	Shaffer.....	G-3		

## ELECTRIC RAILROADS

Eastern Texas Elec. Co.....	V-9	Northern Texas Traction Co.....	Q-4
Beaumont to Port Arthur.....		Lines from Ft. Worth to both Dallas and Cleburne.....	
El Paso Electric Ry.....	A-5	North Texas Interurban.....	R-2
El Paso to Ysleta.....		Sherman interurban.....	
Galveston Houston Electric Co.....	U-10	Southwestern Traction Co.....	Q
Galveston to Houston.....		Belton to Temple.....	-7
Home Interurban.....	Q-5	Texas Electric Ry.....	Q-5
Hillsboro Interurban.....		Line from Waco to Dallas and Denison, also from Dallas to Corsicana.....	
Jefferson County Traction Co.....	W-9		
Port Arthur interurban line.....			

## RAILROADS

Railroads	Location Key	Railroads	Location Key
Abilene & Southern.....	M-4	Missouri Pacific.....	V-2
Angelina & Neches Riv.....	U-6	Moscow, Camden & San Augustine.....	U-7
Artesian Belt.....	O-10	Motley County.....	K-1
Asherton & Gulf.....	M-12	Nacogdoches & Southeastern.....	U-6
Atchison, Topeka & Santa Fe.....	Q-1	Orange & Northwestern.....	V-3
Bartlett Western.....	P-7	Panhandle & Santa Fe.....	B-3
Beaumont, Sour Lake & Western.....	U-9	Paris & Mt. Pleasant.....	T-2
Black Bayou.....	V-3	Pecos Valley Southern.....	E-7
Brownwood, North & South.....	N-5	Port Bolivar Iron Ore.....	U-4
Caro Northern.....	U-5	Quanah, Acme & Pacific.....	K-1
Chicago, Rock Island & Gulf.....	P-1	Ringling, Eastland & Gulf.....	N-4
Chicago, Rock Island & Pacific.....	P-1	Rio Grande & Eagle Pass.....	M-14
Colorado & Southern (Ft. W. & D.C.).....	A-1	Rio Grande, El Paso & Santa Fe.....	A-5
Cotton Belt Route (St. L. S. W. Ry.).....	T-4	Rio Grande.....	Q-17
Denison & Pacific Suburban.....	R-2	Roby & Northern.....	L-3
Line from Denison to Sherman Jc.....		Roscoe, Snyder & Pacific.....	K-4
Eastern Texas (St. L. S. W. Ry.).....	T-6	San Antonio & Arkansas Pass.....	P-10
East Texas & Gulf.....	V-8	San Antonio Southern.....	O-10
El Paso & Southwestern.....	A-5	San Antonio, Uvalde & Gulf.....	O-11
Fort Worth & Denver City.....	B-2	San Benito & Rio Grande Val.....	O-16
Ft. Worth & Rio Grande.....	N-6	Shreveport, Houston & Gulf.....	U-6
Fredericksburg & Northern.....	N-8	Southern Pacific.....	J-9
Frisco Lines.....	Q-3	St. Louis, Brownsville & Mex.....	Q-12
Galveston, Harrisburg & San Antonio.....	A-5	St. Louis-San Francisco.....	Q-3
Galveston, Houston & Henderson.....	U-10	St. Louis, San Francisco & Texas.....	Q-3
Groveton, Lufkin & Northern.....	U-6	St. Louis, Southwestern Ry. of Tex.....	T-4
Gulf & Northern.....	W-7	Sugar Land.....	T-10
Gulf Coast Lines.....	P-13	Texas-Mexican.....	N-14
Gulf, Colorado & Santa Fe.....	Q-3	Texas Midland.....	S-2
Gulf, Texas & Western.....	N-2	Texas Short Line.....	S-3
Houston & Brazos Valley.....	T-11	Texas South-Eastern.....	U-6
Houston & Texas Central.....	R-6	Texas State.....	T-5
Houston, East & West Texas.....	T-9	Timpon & Henderson.....	U-5
International & Great Northern.....	N-14	Trinity & Brazos Valley.....	S-7
Jefferson & Northwestern.....	U-3	Trinity Valley & Northern.....	U-8
Kansas City, Mex. & Orient.....	M-2	Trinity Valley Southern.....	T-7
Kansas City Southern.....	V-2	Weatherford, Mineral Wells & N. W.....	P-3
Katy (M. K. & T. Ry.).....	R-1	Wichita Falls & Northwestern.....	N-1
Lufkin, Hemphill & Gulf.....	V-6	Wichita Falls & Southern.....	N-2
Marshall & E. Texas.....	W-6	Wichita Falls, Ranger & Ft. Worth.....	O-2
Not operating line from Winslow to Elysian Fields.....	V-4	Wichita Valley.....	N-2
Mexico North Western.....	A-5		
Midland & Northwestern.....	H-5		
Missouri, Kansas & Tex. of Tex.....	R-1		
Missouri, Okla. & Gulf of Texas.....	R-1		

## STATE INSTITUTIONS

Epileptic Colony.....	Abilene	College of Industrial Arts.....	Denon
Sul Ross Normal.....	Alpine	N. Texas Normal.....	Denon
Grubbs Vocational College.....	Arlington	School of Mines.....	El Paso
Confederate Home for Men.....	Austin	Medical College.....	Galveston
Deaf, Dumb & Blind Institute for Colored.....	Austin	Walter Colquitt Home for Crippled Children.....	Galveston
Feeble Minded Colony.....	Austin	Girls' Training School.....	Gainesville
Lunatic Asylum.....	Austin	Juvenile Training School.....	Gatesville
School for the Blind.....	Austin	Sam Houston Normal.....	Huntsville
University of Texas.....	Austin	Prairie View Normal (Colored).....	Prairie View
Woman's Confederate Home.....	Austin	E. Texas Hospital for Insane.....	Rusk
Agri. & Mech. College.....	Bryan	S. W. Insane Asylum.....	San Antonio
W. Texas Normal.....	Canyon	S. W. Texas Normal.....	San Marcos
Agri. & Mech. College.....	College Station	Jno. Tarleton College.....	Stephenville
E. Texas Normal.....	Commerce	N. Texas Hospital for Insane.....	Terrell
Orphans' Home.....	Corsicana		

## EDUCATIONAL AND OTHER INSTITUTIONS

Baylor College.....	Belton	Col. of Marshall.....	Marshall
U. S. Dry Farm.....	Big Sp.	Midland College.....	Midland
Hinn College.....	Brenham	Blome for Aged.....	Palacios
Lutheran College.....	Clifton	St. Marys Academy.....	Palatine
L. O. O. F. Widows' & Orphans' Home.....	Corsicana	Wayland Bap. Col.....	Plainview
Mary Allen Sem.....	Crockett	Port Arthur Col.....	Port Arthur
Decatur Bap. Col.....	Decatur	Rusk College.....	Rusk
St. Xaviers Academy.....	Denison	Peacock Mill Col.....	San Antonio
Army Post.....	Eagle Pass	W. Tex. Mil. Col.....	San Antonio
College of City of El Paso.....	El Paso	Baptist Academy.....	San Marcos
El Paso School for Girls.....	El Paso	Coronal Mil. School.....	San Marcos
S. Bap. Theo. Sem.....	Ft. Worth	Kidd Key Col.....	Sherman
Tex. Christian Uni.....	Ft. Worth	State A. & M. Col.....	Stephenville
Tex. Woman's Col.....	Ft. Worth	Tyler Com. Col.....	Tyler
Catholic University.....	Galveston	Nazareth Academy.....	Victoria
Southwestern Uni.....	Georgetown	St. Joseph's Col.....	Victoria
Rice Institute.....	Houston	Baptist Sanitarium.....	Waco
Notre Dame.....	Kerrville	Baylor Uni.....	Waco
S. Tex. Normal (proposed).....	Kingsville	Trinity University.....	Waxahachie
Laredo Seminary.....	Laredo	Grayson College.....	Whitewright
Mercy Hospital.....	Laredo	Baldwin's Bus. Col.....	Yoakum

## RIVERS AND CREEKS

Angelina R.....	U-6	Guadalupe R.....	Q-11	PECOS R.....	H-7
Aransas R.....	P-12	Howards Cr.....	J-8	Pedernales R.....	N-8
Atascosa R.....	O-11	Lampasas R.....	P-7	Prairie Dog Fk.....	C-4
Big Cypress Cr.....	U-3	Lavaca R.....	R-11	RED R.....	S-1
Bosque R.....	P-5	Leon R.....	P-6	RIO GRANDE.....	M-13
Brady Cr.....	M-7	Leona R.....	M-10	Sabanna R.....	N-4
BRAZOS R.....	S-8	Little R.....	Q-7	Sabine R.....	W-8
Canadian Cr.....	B-2	Little Wichita R.....	O-2	Salt Fk.....	J-1
Jibola Cr.....	P-11	Llano R.....	N-8	San Antonio R.....	P-12
Jear Fk.....	N-3	Los Olmos.....	N-15	San Bernardo R.....	S-10
JOLORADO R.....	O-8	Maravilla Cr.....	F-10	San Gabriel R.....	Q-7
Joncho R.....	K-6	Navidad R.....	R-10	San Jacinto R.....	S-9
Jowhouse Cr.....	P-6	Navosota R.....	R-6	San Marcos R.....	O-8
Devils R.....	K-9	Neches R.....	V-8	San Saba R.....	N-9
Double Mt. Fk.....	K-3	Nucues R.....	O-12	Sulphur R.....	V-6
Elm Cr.....	Q-2	Pease R.....	M-1	Trinity R.....	U-2
Frio R.....	O-12	Pecan B.....	N-5	Wichita R.....	N-1
Guadalupe Cr.....	K-5	Pecan Cr.....	R-5	Yegua Cr.....	Q-8



# CLASON COMMERCIAL INDEX OF TEXAS CITIES AND TOWNS

## EXPLANATION

**POPULATION**—In the column at the left of the name of the town, under the abbreviation "Pop." are figures to denote the population.

**COUNTIES**—Following the name of the town, is the name of the county in which it is located.

**ELEVATIONS**—Below the abbreviation "Alt." are figures indicating the altitude of larger towns above sea level.

**KEY**—The letter and figures in the right hand column under the word "Key" refer respectively to the letter on the top and bottom of the accompanying map and the figures on each side of it; thus indicating the location of the town on the map.

**RESOURCES**—A brief description gives the industries and resources of the cities.

**HOTELS**—Under the cities are given the names of one or more hotels.

Pop.	Co.	Alt.	Key
303	Abbott, Hill	713	Q-5
20	Aberdeen, Collingsworth		D-3
60	Aberfoyle, Hunt		S-2
300	Abernathy, Hale		B-4
10274	ABILENE, Taylor	1735	M-4
	County seat of Taylor County.		
	Fertile farming district. Brick works, elevator, cotton compress and gins.		
	Grace and Commercial Hotels.		
	Ables, Hudspeth		C-5
40	Abner, Kaufman		S-4
300	Abram, Hidalgo		O-16
6	Ace, Polk		U-8
500	Ace, Hardeman	1516	D-4
100	Acton, Hood		P-4
50	Aeworth, Red River		T-1
75	Adamsville, Lampasas		O-6
35	Adicks, Harris		T-9
12	Adiellou, Red River		T-1
100	Addison, Dallas		R-3
25	Adran, Hopkins		T-2
30	Adell, Parker		P-3
25	Ad-Hall, Milam		Q-7
200	Adkins, Bexar		O-10
25	Admiral, Callahan		N-4
50	Adobe Walls, Hutchinson		C-2
100	Adrian, Oldham		A-2
50	Advance, Parker		P-3
50	Afton, Dickens		K-2
50	Agnes, Parker		P-3
80	Agua Dulce, Nueces		P-13
100	Agua Nueva, Jim Hogg		O-15
200	Aguilares, Webb		N-14
100	Aiken (Floco), Floyd		C-4
100	Alamo, Hidalgo		E-7
100	Alamo, Reeves		V-2
100	Alamo Mills, Cass		C-3
250	Alamred, Gray		C-3
50	Alasan, Nacogdoches		U-6
1352	Alba, Wood	447	S-3
	Cotton gins.		
1450	ALBANY, Shackelford		
	MK&T	1420	N-4

Pop	Co.	Alt.	Key
	County seat of Shackelford Co.		
	Farming and cattle raising.		
25	Albert, Gillespie		O-8
10	Albion, Red River		T-1
50	Aledo, Angelina		U-6
	Alcino, Floyd		C-4
50	Alderbranch, Anderson		T-5
	Aldine, Harris		T-9
500	Aldridge, Jasper		V-7
500	Aledo, Parker	864	P-4
50	Aleman, Hamilton		P-6
500	Alexander, Erath	1165	O-5
20	Aley, Henderson		S-4
	Alfalfa, Ochiltree		D-1
200	Alfred, Jim Wells		P-13
25	Algerita, San Saba		N-7
60	Algoa, Galveston		T-10
10	Alhambra, Hutchinson		C-2
1880	ALICE, Jim Wells		
	SA&AP, TMex Rys.	205	P-13
	County seat of Jim Wells Co.		
	Farming. Cotton, corn and cattle raised. Cotton mill and gin.		
	Newberry Hotel.		
150	Aliel, Harris		T-9
20	Allamoore, Hudspeth		C-7
350	Allen, Collin		R-3
100	Allenfarm, Brazos		S-8
250	Alleyton, Colorado		R-9
250	Alma, Ellis		R-4
150	Almeda, Harris		T-9
100	Almira, Cass		U-3
100	Almont, Bowie		U-2
20	Alpha, Dallas		R-3
2500	ALPINE, Brewster	4481	E-8
	County seat of Brewster Co.		
	Mining, fruit and cattle raising. Smelter building.		
	Hotels: Holland, Garnet and Ritchey.		
26	Alsa, Van Zandt		S-3
50	Alsodorf, Ellis		R-4
200	Altair, Colorado		R-9

Pop.	Co.	Alt.	Key
400	Altaloma, Galveston		U-10
10	Alta Vista, Jim Hogg		O-15
10	Althea, Bell		Q-7
1081	Alto, Cherokee	433	T-5
50	Altoaga, Collin		R-3
30	Altonia, San Augustine		V-6
25	Alum, Wilson		P-10
1284	Alvarado, Johnson	693	Q-4
	Farming. Several cotton gins. Commercial Hotel.		
1519	Alvin, Brazoria	51	T-10
	Truck farming, strawberry raising and dairying. Canning factory. Alvin Hotel.		
1376	Alvord, Wise	881	P-2
	Farming and truck raising. Cotton gin.		
	Hatchett Hotel.		
15494	AMARILLO, Potter	3669	B-2
	County seat of Potter Co. Farming and grazing. Railway shops. Elevators, creamery and foundry. Amarillo Hotel.		
30	Ambia, Lamar		S-2
100	Ambose, Grayson		R-2
100	Amelia, Jefferson		V-8
60	Ames, Coryell		P-6
25	Amburst, Lamar		T-1
25	Amigo, Smith		T-4
200	Ammansville, Fayette		R-9
126	Amphion, Atascosa		O-11
500	ANAHUAC, Chambers		U-9
	County seat of Chambers Co.		
	Anaqua, Victoria		Q-11
15	Anarene, Archer		O-2
100	Anchor, Brazoria		T-10
33	Anchorage, Atascosa		O-10
	Anderson, Goliad		Q-11
600	ANDERSON, Grimes		
	T&GNRY		S-8
	County seat of Grimes Co.		
300	ANDREWS, Andrews	339	G-4
	County seat of Andrews Co.		
	Andy Cherokee		T-5
	Angelita, Reeves		E-5
10	Angeles, San Patricio		Q-13
1043	ANGLETON, Brazoria		T-10
	County seat of Brazoria Co. Farming and stock raising. Mrs. Bradford, hotel.		
50	Angus, Navarro		R-5
538	Anna, Collin		R-2
5	Annanore, Live Oak		O-12
100	Annetta, Parker		P-4
750	Annona, Red River		U-2
1425	ANSON, Jones		M-4
	County seat of Jones County. Farming, cotton and stock raising. Cotton gins. Veitch and Anson Hotels.		
160	Antelope, Jack		O-2
40	Anthony, Fannin		R-2
100	Anti, Cass		V-2
30	Apollonia, Grimes		S-8
250	Appleby, Nacogdoches		U-5
300	Apple Springs, Trinity		U-6
310	Aquila, Hill		Q-5
Pop.	Co.	Alt.	Key
2560	Arah, Scurry		K-3
	Aransas Pass, San Patricio	5	Q-13
	Farming, stock raising and fisheries. Oil production. Building concrete oil barges.		
20	Arbala, Hopkins		T-3
300	Arcadia, Galveston		U-10
689	ARCHER CITY, Archer		O-2
	County seat of Archer Co.		
50	Arcola, Fort Bend		T-10
100	Ardat, Collin		R-3
12	Arden, Irion		K-6
10	Argenta, Live Oak		P-12
225	Argo, Titus		U-2
250	Argyle, Denton		Q-3
25	Arlie, Childress		D-3
3031	Arlington, Tarrant	605	Q-4
	Farming. Cotton gins and nursery. Arlington Hotel.		
20	Armstrong, Willacy		P-15
100	Arneckeville, Dewitt		Q-11
12	Arnett, Coryell		P-6
	Arnim, Wharton		S-10
150	Arnold, Collin		R-2
350	Arp, Smith		T-4
	Artesia, La Salle		M-12
100	Artesia Wells, La Salle		M-12
150	Arthur City, Lamar		T-1
150	Ash, Houston		S-6
	Ashby, Matagorda		S-11
1500	Ashberton, Dimmit		M-12
250	Ashland, Upshur		U-3
20	Ashtola, Donley		C-3
150	Ashwood, Matagorda		S-10
25	Ashworth, Kaufman		S-4
436	ASPERMONT, Stonewall	1773	L-3
	County seat of Stonewall Co.		
115	Atascosa, Bexar		N-10
100	Ater, Coryell		P-6
3276	ATHENS, Henderson		
	County seat of Henderson Co. Farming and fruit raising. Brick works, pottery and cotton gins. Dean House.	490	S-4
1469	Atlanta, Cass	260	V-3
	Farming. Saw mills, pottery, gins and brick plant Meredith Hotel.		
75	Atlas, Lamar		S-2
150	Attoyac, Nacogdoches		V-6
40	Atwell, Callahan		N-5
800	Aubrey, Denton	590	Q-2
20	Audelia, Dallas		R-3
100	Audubon, Wise		P-2
120	Augusta, Houston		T-6
34876	AUSTIN, Travis	503	P-8
	Capital of Texas and county seat of Travis county. Farming and dairying. Many factories. Fine capitol building. University of Texas. Beautiful Lake Austin near Driskill Hotel.		



Pop.	Co.	Alt.	Key	Pop.	Co.	Alt.	Key
400	Austwell, Refugio		R-12		Baurs, Harris		T-9
50	Authon, Parker		P-3	3454	BAY CITY, Mata-		
300	Avalon, Ellis		R-5		gorda	55	S-11
1000	Avery, Red River	476	U-2		County seat of Matagorda Co.		
500	Aviation Repair, Dallas		R-3		Farming and grazing. Two rice mills.		
500	Avinger, Cass	397	U-3		Nuckols and Rice Hotels.		
250	Avoca, Jones		M-3	10	Bayou, Sabine		M-6
	Avondale, Tarrant		Q-3	300	Bayside, Refugio		Q-12
285	Axtell, McLennan		Q-6	125	Bazette, Navarro		S-5
135	Azle, Tarrant		P-3	50	Beadle, Matagorda		S-11
				200	Beasley, Fort Bend		S-10
10	Bagby, Fannin		S-2	300	Beatriz, Hidalgo		P-16
400	Bagwell, Red River		T-2	100	Beattie, Comanche		O-5
300	Bailey, Fannin		S-2	140	Beaukiss, Williamson		Q-8
250	Baileyville, Milam		R-7	40422	BEAUMONT, Jefferson	24	V-8
1902	BAIRD, Callahan	1715	M-4		County seat of Jefferson Co. Oil production and refining. Rice growing and milling. Lumber mills. Cattle raising. Railroad shops. Ocean shipping via canal. Crosby House. Beaumont Hotel (proposed).		
	County seat of Callahan Co. Farming and stock raising. Railroad shops.			20	Bebe, Gonzales		P-10
	Bairdstown, Lamar		T-2	40	Beckham, Hopkins		S-3
	Balch, Lubbock		H-2		Beekman, Bexar		O-9
125	Bald Prairie, Robertson		R-6	400	Beekville, Panola		U-4
2767	BALLINGER, Runnels	1637	M-6		Beckton, Lubbock		J-2
	County seat of Runnels Co. Farming. Ballinger Cotton Oil Co. Central Hotel.			75	Bedford, Tarrant		Q-3
250	Balmorhea, Reeves		E-7	500	Bedias, Grimes		S-7
45	Balsora, Wise		P-3	40	Beceaves, Travis		P-8
	Bammel, Harris		T-9	15	Bechgrove, Jasper		V-7
419	BANDERA, Bandera		N-9	50	Bee House, Coryell		P-6
	County seat of Bandera Co.			3063	BEEVILLE, Bee	214	P-12
700	Bangs, Brown	1603	N-6		County seat of Bee Co. Farming and grazing. Cotton gin and oil mills. Broom factories. Queen Hotel.		
100	Bankersmith, Gillespie		N-8	50	Behrville, Williamson		P-7
300	Bannister, San Augustine		V-6	192	Behkerville, Montague		P-2
	Banquete, Neuces		P-13	75	Belfalls, Bell		Q-7
15	Bantam, Fannin		S-2		Belgrade, Newton		W-7
70	Barclay, Falls		Q-7	15	Belt, Lamar		S-1
358	Barclay, Ellis		R-4	300	Bellaire, Harris		T-9
80	Barber, Harris		T-9	782	Bellaire, Clay	1030	P-2
200	Barkeada, Edwards		L-9	585	Bells, Grayson	698	R-2
35	Barnes, Polk		U-7	25	Bells Branch, Ellis		Q-4
100	Barnhart, Irion		J-7	1750	BELLEVILLE, Austin	263	S-9
25	Barnum, Polk		U-7		County seat of Austin Co. Farming and grazing. Oil mill and cotton gins.		
300	Barry, Navarro		R-5		Steck and Burns Hotels.		
490	BARSTOW, Ward	2557	P-6	100	Belmont, Gonzales		P-10
	County seat of Ward Co.			200	Belott, Houston		T-6
100	Bart (Artesian Wells), LaSalle		N-12	5098	BELTON, Bell	511	Q-7
1731	Bartlett, Bell	599	Q-7		County seat of Bell Co. Farming and grazing. Belton Yarn Mill. Oil mill, gins and flour mill. Central Hotel.		
	Farming and cotton culture. Cotton gin and oil mill.			200	Benarnold, Milam		Q-7
	Clark St. and Commercial Hotels. Bartonite, Hale		B-4	800	Benavides, Duval	390	O-13
300	Bartonville, Denton		Q-3	50	Ben Bolt, Jim Wells		P-13
50	Bassett, Bowie		U-2	40	Benbrook, Tarrant		Q-3
1828	BASTROP, Bastrop	374	Q-8	40	Benchley, Robertson		R-7
	County seat of Bastrop Co. Farming and lignite mining. Cotton oil production. Bastrop Inn.			75	Bend, San Saba		O-7
250	BATESVILLE, Zavalla		M-11	250	Benford, Polk		U-7
800	Batson, Hardin		U-8	500	Ben Franklin, Delta	465	S-2
100	Battle, McLennan		Q-6				
	Baucis, Trinity		T-7				

Pop.	Co.	Alt.	Key	Pop.	Co.	Alt.	Key
200	Benhur, Limestone		R-6	50	Bliss, Grayson		R-2
25	Benina, San Augustine		V-6		Blockner, Harrison		V-4
400	BENJAMIN, Knox		M-2	436	Bloomburg, Cass	310	V-3
	County seat of Knox Co.			31	Bloomfield, Cooke		Q-2
40	Benoit, Runnels		M-5	898	Blooming Grove, Navarro	509	R-4
200	Benton, Atascosa		N-10	600	Bloomington, Victoria		Q-11
50	Bentonville, Jim Wells		P-13	969	Blossom, Lamar	530	T-2
350	Ben Wheeler, Van Zandt		S-4	250	Bluegrove, Clay		O-2
350	Berclair, Goliad		Q-12	425	Blue Ridge, Collin		R-2
25	Berghelm, Kendall		O-9		Bluff, Bandera		N-9
100	Bergs, Bexar		O-10	500	Bluff Dale, Erath	880	P-4
15	Bering, Polk		U-7	50	Bluff Springs, Travis		P-8
10	Bermuda, Dimmit		M-12	25	Bluffton, Llano		O-7
100	Bernardo, Colorado		R-9	496	Blum, Hill	582	Q-5
500	Bertram, Burnet	1268	P-7	20	Blunt, Freestone		S-5
40	Berwick, Jack		Q-3	25	Bluntzer, Neuces		P-13
	Bess, Duval		O-13	50	Bly, Titus		U-2
400	Bessmay, Jasper		V-8	100	Blythe, Gaines		G-3
10	Bethel, Anderson		S-5		B. N. & S. Jc., Brown		N-5
400	Bettie, Upshur		U-3		Board House, Blanco		O-8
40	Bexar, Bexar		O-10	200	Bobville, Montgomery		S-8
30	Beyersville, Williamson		Q-8	1153	BOERNE, Kendall	1333	N-9
100	Bigardstown, La Mar		T-2		County seat of Kendall Co. Phillips Hotel.		
50	Bibb, Comanche		N-5	500	Bogota, Red River		T-2
20	Bibles, Hardeman		D-3	35	Boling, Wharton		S-10
100	Big Creek, Liberty		U-8	105	Bolivar, Denton		Q-2
100	Bigfoot, Frio		N-11	600	Bomarton, Baylor	1409	M-2
100	Big Hill, Limestone		R-6	40	Bonanza, Hopkins		S-3
100	Big Hill, Matagorda		S-11	6008	BONHAM, Fannin	570	S-2
100	Big Lake, Reagan		Q-7		County seat of Fannin Co. Farming, grazing and mining. Cotton gins cotton and flour mills. Alexander Hotel.		
25	Big Lump, Milam		Q-7	200	Bonita, Montague		P-2
	Big Paint, Real		M-9		Bonita Jc., Nacogdoches		U-5
638	Big Sandy, Upshur	331	T-4		Bonner, Freestone		R-5
4273	BIG SPRING, Howard	2391	J-5	200	Bonney, Brazoria		T-10
	County seat of Howard Co. Farming and cattle raising. Creamery and cotton gin. Railroad shops. Cole Hotel. Johnson House.			50	Bono, Johnson		P-4
	Bigsquare, Castro		B-4	250	Bonson, Wharton	144	S-10
50	Big Valley, Mills		O-6	100	Bon Weir, Newton		W-7
700	Bigwells, Dimmit		M-11	400	Booker, Lipscomb		D-1
100	Birch, Burleson		R-8	200	Boonsville, Wise		P-3
100	Birdville, Tarrant		Q-3	300	Booth, Fort Bend		T-10
25	Birome, Hill		Q-5		Boquillas, Brewster		F-10
100	Birbright, Hopkins		T-2	15	Borden, Colorado		R-9
25	Biry, Medina		N-10	75	Bosqueville, McLennan		Q-6
1309	Bishop, Neuces		P-14	100	BOSTON, Bowie		U-2
450	Bivins, Cass		V-3		County seat of Bowie Co.		
	Bivouac, Stephens		O-3	50	Boswell, Walker		T-7
15	Black, Farmer		A-3		Boulevard Jc., Cameron		P-16
100	Black Foot, Anderson		S-5	100	Bovina, Parker		A-3
40	Blackoak, Hopkins		T-3	3719	Bowie, Montague	1125	P-2
400	Blackwell, Nolan		L-5		Farming and fruit raising. Oil mill and cotton gins. Commercial Hotel. R. Meyer, hotel.		
40	Blair, Taylor		L-4	20	Bowser, San Saba		N-6
100	Blakenev, Red River		T-1	50	Boxelder, Red River		U-2
50	Blanchard, Polk		U-7	150	Boyce, Ellis		R-4
500	Blanco, Blanco	1250	O-8	410	Boyd, Wise	738	P-3
200	Blanconia, Bee		Q-12	10	Boysd Chapel, Jones		L-3
60	Bland, Bell		Q-6		Boydston, Gray		Q-3
50	Blandlake, San Augustine		V-6	36	Boz, Ellis		C-4
472	Blanket, Brown	1600	N-5	75	Brachfield, Rusk		U-5
50	Blanton, Hill		Q-5	105	Bracken, Comal		O-9
150	Blakwood, Newton		W-7				
400	Bleiberville, Austin		R-9				
250	Blessing, Matagorda		S-11				
20	Blevins, Falls		Q-7				

Pop.	Co.	Alt.	Key	Pop.	Co.	Alt.	Key
1600	BRACKETTVILLE,			8223	BROWNWOOD,		
	Kinney.....1100	L-10			Brown.....1348	N-6	
	County seat of Kinney Co. Farming, Grist mill and gin. Martha Terrell, hotel.				County seat of Brown Co. Farming and stock raising. Cotton and oil mills, refineries and rock crusher.		
20	Brad, Palo Pinto.....O-4				Graham and Southern Hotels.		
	Bradford, Anderson.....S-5			600	Bruceville, McLennan.592.	Q-6	
150	Bradshaw, Taylor.....M-5			100	Brundage, Dimmitt.....M-11		
2197	BRADY, McCulloch.1600.	N-7		25	Bruni, Webb.....N-14		
	County seat of McCulloch Co. Farming and grazing. Two cotton seed oil mills. Queen Hotel.			5	Brunswick, Cherokee.....T-6		
20	Branch Collin.....R-3			75	Brushy Creek, Anderson.....T-5		
400	Branchville, Milam.....R-7			6307	BRYAN, Brazos.....367.	R-7	
307	Brandon, Hill.....Q-5				County seat of Brazos Co. Farming. Oil mill. Hotel Bryan.		
60	Bransford, Tarrant.....Q-3				Bryan Jr., Brazos.....R-7		
300	Brashear, Hopkins.....S-3			5	Bryan Mound, Brazoria.....T-11		
800	Brazoria, Brazoria, STLB&Mry.....T-10			125	Bryans Mills, Cass.....U-2		
100	Brazos, Palo Pinto.....O-4			20	Bryarly, Red River.....U-1		
1846	BRECKENRIDGE, Stephens.....1200.	N-3		250	Bryson, Jack.....O-3		
	County seat of Stephens Co. Farming and stock raising. Cotton gin. Shelton Hotel.			400	Buck, Polk.....T-7		
1000	Bremond, Robertson.466.	R-7		200	Buckeye, Matagorda.....S-11		
5066	BRENHAM, Washington.....350.	R-8		500	Buckholts, Milam.525.	Q-7	
	County seat of Washington Co. Farming. Oil and cotton mills. Anthony and Wright Hotels.			50	Buckhorn, Austin.....S-9		
50	Breslau, Lavaca.....Q-10			50	Buckner, Parker.....P-4		
10	Bries, Hall.....C-3			432	Buda, Hays.....714.	P-9	
1872	Bridgeport, Wise.....754.	P-3		200	Buena Vista, Pecos.....G-7		
	Farming and coal mining. Cotton gin and tile works. Beason Hotel.			510	Buffalo, Leon.....397.	S-6	
400	Briggs, Burnet.....P-7			500	Buffalo Gap, Taylor.1950.	L-5	
75	Brighton, Nueces.....Q-14			125	Buffalo Springs, Clay.....Q-2		
20	Brinker, Hopkins.....T-3			30	Bulcher, Cooke.....Q-2		
350	Bristol, Ellis.....R-4			400	Bullard, Smith.....T-5		
	Brite, Presidio.....D-8			300	Bull Creek, Eastland.....O-4		
200	Britton, Ellis.....Q-4			300	Bullverde, Bexar.....Q-9		
10	Broadus, San Augustine.....V-6			400	Buna, Jasper.....V-8		
100	Broadmoor, McCulloch.....M-6			9	Bunger, Young.....O-3		
200	Broadway, Lamar.....T-2			10	Bunyan, Erath.....O-5		
100	Brook, Parker.....P-4			12	Burgess, Bell.....Q-7		
30	Broncho, Yoakum.....G-2			5300	Burkburnett, Wichita.....F-4		
900	Bronson, Sabine.....V-6				Oil production. Elevator, refinery, gin and oil tank factory. Edward's Hotel.		
529	Bronte, Coke.....1893.	L-5		200	Burke, Angelina.....U-6		
800	Brookeland, Sabine.....V-6			150	Burkett, Coleman.....N-5		
100	Brookeshire, Brown.....N-6			200	Burkeville, Newton.....W-7		
1000	Brookshire, Waller.....S-9			500	Burleson, Johnson.....715.	Q-4	
300	Brookston, Lamar.....S-2			400	Burlington, Milam.....Q-7		
10	Broome, Sterling.....K-5			966	BURNET, Burnet.1300.	O-7	
500	Brownell, Jasper.....V-7				County seat of Burnet Co.		
800	BROWNFIELD, Terry.....H-3			20	Burr, Wharton.....S-10		
	County seat of Terry Co.				Burroughs, Austin.....S-9		
200	Brownsboro, Henderson.....T-4			20	Burrow, Hunt.....R-3		
11791	BROWNSVILLE, Cameron.....57.	Q-17		400	Burton, Washington.....R-8		
	County seat of Cameron Co. Farming and grazing. Wholesale groceries and sugar factories. Miller and Travelers Hotels.			75	Bushland, Potter.....B-2		

Pop.	Co.	Alt.	Key	Pop.	Co.	Alt.	Key
10	Caesar, Bee.....P-11			300	Carricitos, Cameron.....P-17		
90	Cain City, Gillespie.....N-8			954	CARIZO SPRINGS, Dimmit.....M-12		
25	Calallen, Nueces.....Q-13				County seat of Dimmit Co. A. A. Petry, hotel.		
369	Calaveras, Wilson.....O-10			25	Carroll, Smith.....T-4		
1689	CALDWELL, Burleson.....406.	R-8		573	Carrollton, Dallas.....443.	Q-3	
	County seat of Burleson Co. Farming and cotton culture. Many cotton gins. Caldwell House.			150	Carson, Fannin.....S-2		
30	Caledonia, Rusk.....U-5			20	Carta Valley, Edwards.....K-9		
25	Calf Creek, McCulloch.....M-7			1366	CARTHAGE, Panola.....V-4		
150	Calhoun, Colorado.....R-10				County seat of Panola Co. Farming. Oil and gas production. Cotton gins and saw mills. Kelly and W. O. W. Hotels.		
600	Call, Newton.....W-7			50	Cartwright, Wood.....T-3		
10	Callina, Limestone.....R-5			75	Casablanca, Jim Wells.....P-13		
75	Callisburg, Cooke (Gainesville 12 mi.).....Q-2			100	Casa Piedra, Presidio.....E-9		
	Call Jr., Jasper.....V-7			100	Cash, Hunt.....S-3		
2099	Calvert, Robertson.335.	R-7		500	Cason, Morris.....337.	U-3	
	Cotton culture and coal mining. Cotton gin and mill. Colonial Hotel.			75	Cass, Cass.....C-2		
250	Calvin, Bastrop.....Q-8				Cassin, Bexar.....O-10		
600	Camden, Polk.....U-7			90	Castell, Llano.....N-7		
4298	CAMERON, Milam.402.	Q-7		679	Castroville, Medina.....N-10		
	County seat of Milam Co. Farming and coal mining. Oil mill and cotton gins. Wholesale houses. Auditorium Hotel.			25	Catarina, Dimmitt.....M-12		
200	Camilla, San Jacinto.....U-7			300	Cat Spring, Austin.....S-9		
583	Campbell, Hunt.....585.	S-3		40	Caviness, Lamar.....S-1		
200	Campbellton, Atascosa.....O-11			50	Cawthon, Brazos.....R-8		
175	Camp San Saba, McCulloch.....N-7			20	Cayote, Bosque.....Q-5		
50	Camp Springs, Scurry.....K-4			400	Cedar Bayou, Harris.....U-9		
18	Camp Verde, Kerr.....N-9			296	Cedar Creek, Bastrop.....Q-8		
2187	CANADIAN, Hemp-hill.....2340.	D-2		300	Cedar Hill, Dallas.....Q-4		
	County seat of Hemphill Co. Farming and grazing. Moody Hotel.			10	Cedar Lane, Matagorda.....T-11		
20	Canary, Polk.....U-7			100	Cedar Mills, Grayson.....R-1		
300	Candelaria, Presidio.....D-8			5	Cedar Park, Williamson.....P-8		
	Candlish, Bee.....P-12			23	Cedar Valley, Travis.....P-8		
215	Caney, Matagorda.....S-11			35	Cego, Falls.....Q-6		
583	CANTON, Van Zandt.....S-4			200	Cele, Travis.....P-8		
	County seat of Van Zandt Co.			1022	Celeste, Hunt.....661.	R-2	
100	Canutilo, El Paso.....A-5			1126	Celina, Collin.....663.	R-2	
1618	CANYON, Randall.3566.	B-3		878	Cement, Dallas.....Q-3		
	County seat of Randall Co. Farming and stock raising. A. N. Henson hotel.			50	Centennial, Panola.....V-4		
12	Caps, Taylor.....M-4			1838	CENTER, Shelby.....V-5		
25	Caradan, Mills.....O-6				County seat of Shelby Co. Farming and fruit raising. Oil mill and brick works. Padon House.		
30	Carancahua, Jackson.....R-11			100	Center City, Mills.....O-6		
741	Carbon, Eastland.....1591.	N-5		38	Center Mill, Hood.....P-4		
75	Carbondale, Bowie.....U-2			600	Center Point, Kerr.....1573.	N-9	
50	Carey, Childress.....D-4			300	CENTERVILLE, Leon.....537.	S-6	
200	Carlisle, Trinity.....T-7				County seat of Leon Co.		
150	Carlos, Grimes.....S-8			150	Centralia, Trinity.....U-6		
100	Carlsbad, Tom Green.....K-6			76	Cestohwa, Karnes.....P-11		
750	Carlton, Hamilton, StLSWry.....O-5			20	Chaha, Dallas.....R-3		
300	Carmine, Fayette.....R-8			45	Chalk, Cottle.....D-4		
200	Carmona, Polk.....U-7			75	Chalk Mountain, Erath.....P-5		
300	Caro, Nacogdoches.....U-5			50	Chambersville, Collin.....R-2		
100	Carpenter, Wilson.....O-10			20	Chambless, Collin.....R-2		

Pop.	Co.	Alt.	Key	Pop.	Co.	Alt.	Key
10	Chappel, San Saba		O-7	3386	CLARKSVILLE,		
150	Charco, Goliad		P-11		Red River	440	T-2
200	Charleston, Delta		T-2		County seat of Red River Co.		
200	Charlie, Clay		O-1		Farming, Gibbons Mfg. Co.		
400	Charlotte, Atascosa		O-11		wagon materials.		
10	Chat, Hill		Q-5		Brewer and Spear Hotels.		
84	Chatfield, Navarro		R-4	100	Clarkwood, Nueces		Q-13
100	Cheapside, Gonzales		Q-10	770	CLAUDE, Armstrong		
50	Cheek, Jefferson		V-9		3406		C-3
50	Cheetham, Colorado		R-10		County seat of Armstrong Co.		
25	Cheisa, Dallas		R-3	250	Clawson, Angelina		U-6
25	Chanango, Brazoria		T-10	50	Clay, Burleson		R-8
250	Cherokee, San Saba		N-7	200	Clayton, Panola		U-5
50	Cherry, Red River		T-2	50	Claytonville, Fisher		L-4
60	Cherryspring, Gillespie		N-8	25	Clear Fork, Caldwell		P-9
300	Chester, Tyler		U-7	75	Clear Lake, Collin		R-3
25	Chesterville, Colorado		S-9	80	Clear Spring, Gaudalupe		P-9
1000	Chico, Wise	942	P-3	12820	CLEBURNE, Johnson		
100	Chicot, Lamar		S-1		815		Q-4
10	Chief, Kaufman		S-4		County seat of Johnson Co. Farming, Cotton culture. Peanut mill, compress, gin and foundry.		
5003	CHILDRESS, Childress	1878	D-4		Cleburne Hotel.		
	County seat of Childress Co. Farming and grazing. Railroad shops. Cotton gins.				Clegg, Live Oak		O-12
	Rhea and Fagg Hotels.			200	Clemville, Matagorda		S-11
1351	Chillicothe, Hardeman		E-4	1000	Cleveland, Liberty	160	T-8
	1386			15	Click, Llano		O-8
	Farming, Cotton gins.			50	Cliff, Medina		N-9
	Denver Hotel.			1327	Clifton, Bosque	670	P-5
500	Chilton, Falls	425	Q-6		Farming and grazing. Flour mill and gins.		
400	China, Jefferson		V-9		Nelson House.		
300	China Springs, McLennan		Q-6	75	Cline, Uvalde		L-10
250	Chireno, Nacogdoches		V-6	300	Clint, El Paso		A-6
250	Chisholm, Rockwall		R-3	96	Clinton, Hunt		S-3
10	Chita, Trinity		T-7	75	Clodine, Fort Bend		T-9
80	Choate, Karnes		P-11	300	Closner (Abram), Hidalgo		O-16
50	Chocolate Bayou, Brazoria		T-10	50	Clute, Brazoria		O-11
75	Choeza, Shelby		V-5	610	Clyde, Callahan	1985	M-4
200	Chrisman, Burleson		R-8	500	Coahoma, Howard	2399	J-4
250	Christine, Atascosa		O-11	25	Cobb, Kaufman		S-4
200	Christoval, Tom Green		L-7	50	Cochran, Austin		S-9
50	Church Hill, Rusk		U-4	100	Cochran, Cooke		Q-1
250	Cibolo, Gaudalupe		O-9	25	Coke, Wood		T-3
300	Cipres, Hidalgo		P-15	600	COLDSPRING, San Jacinto		T-8
10	Circle, Cherokee		T-5		County seat of San Jacinto Co.		
150	Circleville, Williamson		Q-7	2898	COLEMAN, Coleman	1690	M-5
7422	Cisco, Eastland	1614	N-4		County seat of Coleman Co. Farming and oil production. Cotton gin and oil mill.		
	Farming, grain and fruit raising. Wholesale grocery and oil mill. Daniels Hotel. Mobley House.				Cottage Hotel.		
65	Cistern, Fayette		Q-9	10	Coleyville, Cottle		D-4
60	Citrusgrove, Matagorda		S-11	75	Colfax, Van Zandt		S-4
200	CLAIREMONT, Kent		K-3	100	Collegehill, Bowie		U-2
	County seat of Kent Co.			100	Collegeport, Matagorda		S-11
200	Clairette, Erath		O-5	75	College Station, Brazos		R-8
15	Clardy, Lamar		T-2	837	Collinsville, Grayson	756	Q-2
246	CLARENDON, Donley		C-3	500	Colmesneil, Tyler	303	P-7
	County seat of Donley Co. Farming and stock raising. Cotton gin and grain companies.				Cologne, Goliad		V-12
	S. E. Atterbury, hotel. H. C. Herndon, hotel.			1766	COLORADO Mitchell, T&Pry	2061	K-4
200	Clareville, Bee		P-12		County seat of Mitchell Co. Farming and cattle raising. Cotton compress and grist mill.		
Clark, Liberty			U-8		Barcroft Hotel.		
15	Clarkson, Milam		Q-7				

Pop.	Co.	Alt.	Key	Pop.	Co.	Alt.	Key
100	Colquitt, Kaufman		R-3	25	Cornett, Cass		U-3
150	Coltharps, Houston		T-6	10522	CORPUS CHRISTI, NUECES	20	Q-13
5	Colton, Travis		P-8		County seat of Nueces Co. Farming, truck, fruit and stock raising. Summer and winter resort. Oil wells being drilled. Hotels: Nueces, State and Williams.		
750	Columbia, Brazoria, I&GNry	34	T-10	500	Corrigan, Polk	226	U-7
2000	COLUMBUS, Colorado, SPRR	201	R-9	11356	CORSICANA, Navarro	413	R-5
	County seat of Colorado Co. Farming and grazing. Cotton gins.				County seat of Navarro Co. Farming, trucking, poultry, stock raising and dairying. Oil refineries. Oil well machinery and cotton mill products. Main and Commercial Hotels.		
	Live Oak Hotel.			200	Coryell, Coryell		P-6
25	Colvia, Lee		R-8	25	Cosner, Denton		Q-2
100	Comal Comal		O-9	100	Cost, Gonzales		P-10
3524	COMANCHE, Comanche, FtW&RG,SL&SW Rys.	1358	O-5	75	Cottondale, Wise		P-3
	County seat of Comanche Co. Farming. Cotton compress, creamery and flour mill.			100	Cotton Gin, Freestone		R-6
	Hotels: Ridgeway, Colonial and Holden.			25	Cottonplant, Stephens (near Ranger)		
	Combes, Cameron		P-16	250	Cottonwood, Callahan		N-5
10	Combine, Kaufman		R-4	1058	COTULLA, La Salle	422	N-12
700	Comfort, Kendall	1429	N-9		County seat of La Salle Co. Irrigated farming. Onions and live stock raised.		
3842	Commerce, Hunt, StLSW,TMRys	548	S-2		E. T. Widener, hotel.		
	Farming. Cotton gins, oil and flour mills.			125	Coughran, Atascosa		O-11
	Sandifer & Lantz, hotel. Mrs. Credille, hotel.			500	Coupland, Williamson	525	Q-8
827	Como, Hopkins, MK&TRY	532	T-3	300	Courtнав, Grimes		S-8
300	Comstock, Valverde		J-9	50	Cove, Chambers		U-9
50	Comyn, Comanche		O-5	200	Covington, Hill		Q-5
40	Concan, Uvalde		M-10	25	Coxville, Bastrop		P-9
200	Conception, Duval		O-14	8	Craft, Cherokee		T-5
150	Concho, Concho		M-6	164	Crafton, Wise		P-2
100	Concrete, DeWitt		Q-10	75	Craig, Rusk		U-4
35	Conce Crosby		J-2	600	Crandall, Kaufman	430	R-4
25	Conlen, Dallam		B-1	64	Cranes Mills, Comal		O-9
50	Connell, Orange		V-8	200	Cransfills Gap, Bosque		P-5
60	Connor, Madison		S-7	50	Crang, Gonzales		Q-9
1858	CONROE, Montgomery	213	T-8	573	Crawford, McLennan	687	Q-6
	County seat of Montgomery Co. Farming and tomato raising. Saw mills.			35	Creath, Houston		T-6
	Conroe House.			25	Creecy, Trinity		U-6
100	Converse, Bexar		O-10	21	Creechville, Ellis		R-4
25	Conway, Carson		C-3	100	Creedmoor, Travis		P-8
200	Cookes Point, Burleson		R-8	30	Creek, Houston		T-7
500	Cookville, Titus	422	T-2	240	Cresson, Hood		P-4
880	Coolidge, Limestone	535	R-5	150	Crestonico, Duval		O-14
2563	COOPER, Delta	495	S-2	60	Crete, Trinity		T-6
	County seat of Delta Co. Farming. Cotton gins and oil mill.			150	Crews, Runnels		M-5
	Garrard Hotel.			100	Crisp, Ellis		R-4
300	Copeville, Collin		R-3	3061	CROCKETT, Houston, IG&Nry	350	T-6
50	Capita, Duval		O-14		County seat of Houston Co. Farming, stock raising and coal mining. Oil mills and gins.		
400	Coppell, Dallas		Q-3		Pickwick Hotel.		
509	Copperas Cove, Coryell		P-7	250	Crosby, Harris		U-9
	Coralita, Bexar		O-10	697	CROSBYTON, Crosby		K-2
65	Corbet, Navarro		R-5		County seat of Crosby Co.		
25	Cordele, Jackson		R-10	200	Cross, Grimes		S-7
60	Corinth, Denton		Q-3	80	Cross Cut, Brown		N-5
25	Corley, Bowie		U-2	600	Cross Plains, Callahan		N-5

Pop.	Co.	Alt.	Key	Pop.	Co.	Alt.	Key
40	Crow, Wood		T-4	150	Danbury, Brazoria		T-10
1175	CROWELL, Foard 1456		E-4	250	Danevang, Wharton		S-11
	County seat of Foard Co. Farming, Gin.			250	Daniel, Houston		T-6
	C. Lloyd, hotel. T. W. Simth, hotel.			83	Daphne, Franklin		T-2
300	Crowley, Tarrant		Q-4	25	Darden, Bowie		U-2
25	Crown, Atascosa		N-11	40	Dargan, Panola		V-4
	Crowther, McMullen		O-11	100	Darrouzett, Lipscomb		D-1
50	Cryer Creek, Navarro		R-5	500	Darwin, Webb		M-13
1000	Crystal City, Zavalla		L-11	75	Daryl, Harrison		U-4
100	Crystal Falls, Stephens		N-3	100	Datura, Limestone		R-5
75	Cuba, Johnson		Q-4	25	Daugherty, Culberson		C-6
3671	CUERO, De Witt 177		Q-10	25	Davenport, Red River		T-1
	County seat of De Witt Co. Farming, cattle and turkey raising. Wholesale grocery, packing plant and gins.			400	Davilla, Milam		Q-7
	Muti Hotel			25	Davisville, Angelina		U-6
	Cuevitas, Jom Hogg		O-15	98	Davy, De Witt		P-10
100	Culleoka, Collin		R-3	25	Dawn, Deaf Smith		B-3
945	Cumby, Hopkins	635	S-3	950	Dawson, Navarro	482	R-5
200	Cundiff, Jack		P-2	1500	Dayton, Liberty	92	U-9
25	Cuney, Cherokee		T-5		Farming, rice culture and lumbering.		
250	Cunningham, Lamar		T-2	40	Deadwood, Panola		V-4
	Curlew, Floyd		C-4	15	Dean, Clay		O-1
25	Curry, Navarro		R-5	100	Deanville, Burleson		R-8
1000	Cushing, Nacogdoches	420	U-5	175	De Berry, Panola		V-4
63	Cusseta, Cass		U-3	2205	DECATUR, Wise 1059		P-3
50	Cut, Houston		T-6		County seat of Wise Co. Farming. Marble works and gin. Lillard flour mill.		
112	Cuthand, Red River		T-2		Cottage Hotel.		
30	Cuthbert, Mitchell		K-4	25	Decoy, Nacogdoches		U-6
80	Cyclone, Bell		Q-7	25	Deepwater, Harris		T-9
50	Cypress, Harris		S-8	910	Deerark, Harris		T-9
38	Cypress Mill, Blanco		O-9	25	De Kalb, Bowie	410	U-2
					Farming and lumbering.		
25	Dacosta, Victoria		R-11	5	Delba, Fannin		R-2
20	Dacus, Montgomery		S-8	3302	De Leon, Comanche 1268		O-5
843	DAINGERFIELD, Morris 397		U-3		Farming, grazing and oil. De Leon Peanut Co.		
	County seat of Morris Co.				De Leon and Bills Hotels.		
200	Dalby Springs, Bowie		U-2	75	Delfina, Hidalgo		P-16
310	Dale, Caldwell		P-9	37	Delhi, Caldwell		Q-9
2676	DALHART, Dallam 3987		A-1	125	Delia Limestone		R-6
	County seat of Dallam Co. Farming and cattle raising. Railroad shops. Wholesale groceries and saddlery shops.			10589	DEL RIO, Val Verde 948		K-10
	De Soto Hotel.				County seat of Val Verde Co. Stock raising. Railroad division point. Bass fishing. Wool warehouse and mattress factory.		
	Dallardeville, Polk		U-7		Hotels: Franks, Graf and St. Charles.		
158976	DALLAS, Dallas 434		R-3	200	Delvalle, Travis		P-8
	County seat of Dallas Co. Farming, fruit, stock raising and lumbering. Health resort. Annual wholesale business 415 million, and annual manufacturing business 125 million.			50	Delwin, Cottle		D-4
	Hotels: Adolphus, Oriental, Jefferson, Southland, Waldorf, Park and Campbell.			40	Democrat, Comanche		O-6
332	Dalworth Park, Dallas		Q-4	17065	Denison, Grayson 726		R-1
140	Damon (Damon Mound), Brazoria		S-10		Farming, fruit and stock raising. Railroad shops. Cotton mills, peanut factory, foundry, flour mill, etc.		
	Damon Mound (Damon), Brazoria		T-10		Palace Hotel. New hotel to be built.		
160	Damsite, Hardeman		E-4	50	Denning, San Augustine		V-6
12	Dan, Wise		P-2	50	Dennis, Parker		P-4
				15	Denny, Falls		R-6
				80	Denson Spring, Anderson		T-6
				7626	DENTON, Denton 625		Q-3
					County seat of Denton Co. Farm		

Pop.	Co.	Alt.	Key	Pop.	Co.	Alt.	Key
				30	Doss, Gillespie		N-8
				25	Dothan, Eastland		N-4
				125	Dotson, Panola		U-5
				100	Double Bayou, Chambers		U-9
				500	Doucette, Tyler 299		V-7
				100	Douglas, Nacogdoches		U-5
				450	Douglasville, Cass 385		V-2
				40	Dove, Tarrant		Q-3
				100	Downing, Comanche		O-5
					Doyle, Limestone		R-6
				20	Dozier, Collingsworth		D-3
				25	Drane, Navarro		R-5
				50	Dresden, Navarro		R-5
				200	Dressy, Callahan		N-5
				44	Driftwood Hays		P-8
				150	Dripping Springs, Hays		P-8
				75	Driscoll, Nueces		P-13
				25	Drip, Denton		Q-3
				100	Druso, Houston		U-6
				77	Dry Burg, Jasper		V-7
				38	Dryden, Terrell		H-9
				3229	Dryer, Gonzales 1450		Q-10
					Farming. Dublin Oil & Refining and Dublin Mill and Elevator Co's. plants.		
					Evans Hotel		
				40	Dubose, Duval		O-14
				100	Duffau, Erath		P-5
				25	Duke, Fort Bend		T-10
					Dull (Nettville), La Salle		N-12
				100	DUMAS, Moore		B-2
					County seat of Moore Co. Dumont (S. Houston), Harris		T-9
				200	Dumont, King		L-2
				75	Dump, Collin		R-3
				200	Dunbarville, Dallas		Q-4
				400	Dundas, Archer		N-2
				30	Dunkin, Angelina		V-7
				100	Dunlap, Cottle		D-4
				25	Dunlap, Travis		P-8
				163	Dunlay, Medina		N-10
				100	Dunn, Seury		K-4
				40	Duplex, Fannin		S-2
				200	Durango, Falls		Q-7
				15	Durham, Borden		J-4
				300	Duster, Comanche		O-5
				25	Dwire, San Augustine		V-6
				61	Dye, Montague		P-2
					Eagle, Chambers		U-9
				150	Eagle Ford, Dallas		Q-4
				2017	Eagle Lake, Colorado 174		R-10
					Farming. Rice mills and cotton gin.		
					Dallas and Eagle Lake Hotels.		
				5765	EAGLE PASS, Maverick 726		L-11
					County seat of Maverick Co. Coal mining, irrigated farming and cattle raising. Oil.		
					Hotel Eagle.		
				100	Earle, Bexar		O-10
				300	E. Bernard, Wharton		S-10
				60	Easterly, Robertson		R-7

Pop.	Co.	Alt.	Key	Pop.	Co.	Alt.	Key
25	E. Hamilton, Shelby		W-5	45	Elmview, Grayson		R-2
9368	EASTLAND, Eastland		N-4	25	Eloise, Falls		R-7
	County seat of Eastland Co. Farming and mining. Oil district.	1426	N-4	77543	EL PASO, El Paso	3713	A-5
	Charlotte and Engleman Hotels.				County seat of El Paso Co. The metropolis of the Southwest. Farming, mining and stock raising. Health resort. Railroad shops. El Paso Milling Co., Globe Mills and El Paso Smelter plants.		
25	Eaton, Rusk		U-4		Hotels: Paso del Norte, Sheldon, McCoy, Laughlin and Linden.		
50	Eaton, Robertson		R-7	25	Elroy, Travis		P-8
50	Ebony, Mills		N-6	65	Elstone, Medina		N-10
10	Echo, Coleman		N-5	100	Elwood, Fannin		S-1
100	Eckert, Gillespie		N-8	300	Elysian Fields, Harrison		V-4
25	Ecla, Gray		C-2	150	Emberson, Lamar		S-1
454	Ector Fannin		R-2	50	Emblem, Hopkins		S-2
380	Eddy McLennan	671	Q-6	347	Emhouse, Navarro		R-5
641	Eden Concho	2050	M-7	25	Emilee, Tyler		V-7
100	Edgar, De Witt		Q-10	10	Eminence, Chambers		U-9
50	Edge, Brazos		R-7	83	Emmet, Navarro		R-5
820	Edgewood, Van Zandt	445	S-4	700	EMORY, Rains	564	S-3
150	Eduhbe, Fannin		S-2		County seat of Rains Co.		
1406	EDINBURG, Hidalgo	422	P-16	15	Encantada, Brooks		O-15
	County seat of Hidalgo Co.			600	Encinal, La Salle	575	M-12
12	Edith, Coke		K-5		Encino, Brooks		P-15
2000	EDNA, Jackson	72	R-11	50	Energy, Comanche		O-5
	County seat of Jackson Co. Farming and grazing. Cotton gins. McDowell Hotel.			100	Engle, Fayette		Q-9
200	Edom, Van Zandt		T-4	100	English, Red River		U-2
50	Egan, Johnson		Q-4	398	Enloe, Delta		S-2
25	Egypt, Wharton		S-10	7224	Ennis, Ellis	548	R-4
30	Elam, Dallas		R-4		Farming and cotton culture. Cotton compress and gins. New King Hotel.		
100	Elbert, Throckmorton		N-3	25	Ensign, Ellis		R-4
1766	El Campo, Wharton	110	S-10	100	Eola, Concho		L-6
	Farming. Cotton gins, oil and rice mills.			45	Eolian, Stephens		N-4
	Cottage Hotel.			150	Era, Cooke		Q-2
15	Alderville, Gregg		U-4	50	Erath, McLennan		Q-6
300	ELDORADO, Schleicher	2410	K-7	25	Erin, Jasper		V-7
	County seat of Schleicher Co.			25	Erna, Menard		M-7
200	Eldridge, Colorado		R-10	25	Eskato, Fisher		L-4
4744	Electra, Wichita	1230	F-4	75	Esperanza, Montgomery		T-8
	Oil town. Two refineries and two machine shops.			35	Estacado, Crosby		J-2
	Jefferson and Mayer Hotels.			394	Estelline, Hall	1761	D-3
	Elena, Harris		U-9	68	Ethel, Grayson		R-2
1630	Elgin, Bastrop	576	Q-8	60	Etoile, Nacogdoches		M-4
	Farming. Elgin Stan. Brick and Elgin Butler Brick & Tile plants. McClellan Inn.			20	Eula, Callahan		V-4
100	Elizaville, Young		N-3	25	Eulless, Tarrant		Q-3
10	Elite, Hall		D-3	350	Eulogy, Bosque		P-5
18	Elk, McLennan		Q-6		Eunice, Leon		S-6
900	Elkhart, Anderson	390	T-6	150	Eureka, Navarro		R-5
	Ellen, Hale		B-4	400	Eustace, Henderson		S-4
350	Ellinger, Fayette		R-9	60	Eva, Jim Wells		P-14
	Ellington, Harris		T-9	400	Evadale, Jasper		V-8
60	Ellephant, Austin		S-9		Evansville, Leon		S-6
10	Elmaton, Matagorda		S-11	300	Evant, Coryell		O-6
20	Elmdale, Taylor		M-4	50	Evelyn, Travis		P-9
300	Elmendorf, Bexar		O-10	200	Evergreen, San Jacinto		T-8
400	Elmina, Walker		T-8	300	Everitt, San Jacinto		T-8
125	Elm Mott, McLennan		Q-6	125	Everman, Tarrant		Q-4
370	Elmo, Kaufman		S-4	50	Ewell, Upshur		U-3
40	Elmont, Grayson		R-2	30	Exray, Erath		O-4
25	Elmtown, Anderson		S-5	50	Ezell, Lavaca		Q-10

Pop.	Co.	Alt.	Key	Pop.	Co.	Alt.	Key
125	Fabens, El Paso		A-6	250	Flint, Smith		T-4
	Faber, Colorado		R-10	50	Flo, Leon		S-6
75	Fairbanks, Harris		T-9	12	Floco (Aiken), Floyd		C-4
40	Fairehilds, Fort Bend		T-10	80	Flomot, Motley		C-4
50	Fairdale, Sabine		W-6	750	Florence, Williamson	1000	P-7
600	FAIRCHILD, Freestone		S-5	1518	FLORESVILLE, Wilson	389	O-10
	County seat of Freestone Co.				County seat of Wilson Co. Farming and stock raising. Oil mill. F. Telteschick, hotel.		
50	Fairland, Burnet		O-7		Flore, Andrews		G-4
350	Fairlie, Hunt		S-2		Florella, Brooks		P-14
32	Fairmount, Sabine		W-6	200	Floyd, Hunt		R-3
50	Fair Play, Panola		U-4	1384	FLOYDADA, Floyd		C-4
25	Fairview, Wilson		O-10		County seat of Floyd Co. Commercial Hotel.		
120	Fairy, Hamilton		P-5	500	Fluvanna, Scurry		K-3
15	Falba, Walker		T-7	400	Flynn, Leon		S-7
100	Falcon, Zapata		N-15	100	Foard City, Foard		E-4
1500	FALFURRIAS, Brooks		P-14	500	Foch, Scurry		K-4
	County seat of Brooks Co. Farming. Mrs. Atkins, hotel.			25	Fodice, Houston		T-6
100	Fallon, Limestone		R-6	250	Follett, Lipscomb		D-1
500	Falls City, Karnes	309	P-11	20	Foncine, Collin		R-3
15	Fanchon, Swisher		B-3	5	Foot, Collin		R-3
200	Fannett, Jefferson		V-9	50	Ford, Van Zandt		S-4
125	Fannin, Gehlad		Q-11	20	Fordtran, Victoria		Q-11
26	Fant City, Live Oak		O-11	150	Forest, Cherokee		U-6
100	Fargo, Wilbarger		E-4	250	Forestburg, Montague		P-2
	Farmer, Young		O-3	1345	Forney, Kaufman, T&PRy	475	R-3
300	Farmers Branch, Dallas		R-3		Farming. Oil mill and cotton gins. Forney Hotel.		
2167	Farmersville, Collin	611	R-3	400	Forreston, Ellis		Q-4
	Farming. Oil and flour mills. St. George, hotel.				Fort Bliss, El Paso		A-5
150	Farmington, Grayson		R-2		U. S. Military Reservation.		
200	Farrar, Limestone		R-6	100	Fort Chadbourne, Coke		L-5
75	Farrsville, Newton		W-7	500	Fort Davis, Jeff Davis	4927	E-8
600	FARWELL, Farmer	4375	A-4		County seat of Jeff Davis Co.		
	County seat of Farmer Co. Farming and grazing.			25	Fort Griffin, Shackelford		N-3
299	Fate, Rockwall		R-3	30	Fort Hancock, Hudspeth		B-6
50	Faught, Lamar		T-1	136	Fort McKavett, Menard		L-7
75	Faught, Collin		R-2	25	Fort Spunky, Hood		P-4
390	Fayetteville, Fayette	411	R-9	1297	FORT STOCKTON, Pecos	2951	G-7
50	Fazenda, Upshur		U-3		County seat of Pecos Co. Irrigated farming and stock raising. Cotton gin.		
25	Federal, Lee		Q-8		Mrs. Riggs, hotel.		
250	Fentress, Caldwell		P-9	106482	FORT WORTH, Tarrant	670	Q-3
1586	Ferris, Ellis	468	R-4		County seat of Tarrant Co. Stock raising, farming and oil production. Packing houses, oil refineries, cotton mills, flour mills, etc. Hotels: Westbrook, Worth, Metropolitan, Seibold, Terminal and Winfield.		
	Farming. Several pressed brick works. Gins.			15	Forward, Lamar		S-2
15	Fetzer, Waller		S-8	10	Foster, Fort Bend		S-9
100	Field Creek, Llano		N-7	900	Fosteria, Montgomery, GC&SFry		T-8
100	Fields Store, Waller		S-8	150	Fouts, Liberty		U-8
200	Fife, McCulloch		M-6	1000	Fowlerton, La Salle, SAU&GRy		N-12
25	Files, Hill		Q-5	500	Francitas, Jackson, StLB&MRy		R-11
	Filigonio, Hidalgo		P-16				
25	Fincastle, Henderson		T-5				
25	Finis, Jack		O-3				
10	Fink, Grayson		R-1				
100	Finley, Hudspeth		B-6				
62	Fischer Store, Comal		O-9				
20	Fisher, Dallas		R-3				
20	Fisk, Coleman		M-6				
10	Fitzgerald, Anderson		S-5				
5	Fitzhugh, Hays		P-8				
100	Flat, Coryell		P-6				
995	Flatonia, Fayette	452	Q-9				
	Farming. Oil mill and cotton gins. Sullivan Hotel.						
400	Fletcher, Hardin		V-8				

Pop.	Co.	Alt.	Key	Pop.	Co.	Alt.	Key
1131	FRANKLIN, Robertson,				overall factories, compresses, rice and flour mills.		
	I&GNRy.	3919	R-7		Hotels: Galves, Panama, Tremont and Oriental.		
	County seat of Robertson Co. Farming, Gins			716	Ganado, Jackson	71	R-11
818	Frankston, Anderson,			50	Gap, Comanche		N-5
	T&NORY		T-5	35	Garcias, Starr		O-16
25	Fratt, Bexar		O-10	300	GARDEN CITY, Glass-cook		J-5
50	Fred, Tyler		V-7		County seat of Glasscock Co.		
3000	FREDERICKSBURG,			75	Gardendale, La Salle		N-11
	Gillespie	1709	N-8	200	Garden Valley, Smith		T-4
	County seat of Gillespie Co. Farming and grazing. Roller mills and cotton gins.			15	Gardner, Milam		Q-8
	Hotels: Nimits, Ostrow and Central.			50	Garfield, Travis		P-8
	Fredericksburg Jo., Kendall		N-9	1421	Garland, Dallas	541	R-3
	Fredonia, Mason		N-7	100	Garner, Parker		P-3
	Free, Terrell		G-8	150	Garrett, Ellis		R-4
28	Freemound, Cooke		Q-2	80	Garrets Bluff, Lamar		S-1
1798	Freeport, Brazoria		T-11	603	Garrison, Nacogdoches		U-6
	Freeport Chemical Co's plant.			35	Garvin, Wise		P-3
50	Freestone, Freestone		S-6	450	Garwood, Colorado		R-10
300	Frelsburg, Colorado		R-9	500	Gary, Panola		V-5
25	French, Madison		S-7	400	Garza, Denton	580	Q-3
25	Frenstat, Burleson		R-8	25	Gasoline, Bricose		C-4
25	Fresno, Fort Bend		T-10	25	Gaston, Fort Bend		S-9
50	Freyburg, Fayette		Q-9	50	Gastonia, Kaufman		R-4
	Friday, Trinity		T-7	5	Gates, Dallas		Q-3
60	Friendship, Harrison		U-4	2499	GATESVILLE, Coryell		P-6
135	Friendswood, Galveston		T-10		County seat of Coryell Co. Farming and stock raising. Oil and flour mills.		
300	Friona, Farmer		A-3		Elliot Hotel.		
	Frijoles, Culberson		D-5	400	Guadalupe, Milam		R-7
59	Frio Town, Frio		M-11	200	Gay, San Augustine		V-6
733	Frisco, Collin	648	R-3	150	Gayhill, Washington		R-8
	Frossa Limestone		R-6	75	Gem, Hemphill		D-2
913	Frost, Navarro	528	R-5	45	Geneva, Sabine		V-6
150	Fruitland, Montague		P-2	250	Genos, Harris		T-9
150	Fruitvale, Van Zandt		S-4	300	George, Madison		S-7
25	Frydek, Austin		S-9	50	Georges Creek, Somervell		P-4
500	Fulbright, Red River		T-2	2871	GEORGETOWN,		
250	Fulhear, Fort Bend		S-9		Williamson	442	P-7
26	Funston, Jones		M-4		County seat of Williamson Co. Farming. Oil mill and cotton gins.		
500	Fuqua, Liberty		U-8		Commercial Hotel		
50	Furrh, Panola		V-4	250	George West Live Oak		P-12
				123	Geronimo, Guadalupe		P-9
25	Gageby, Hemphill		D-2	25	Gholson, McLennan		Q-6
500	GAIL, Borden		J-3	150	Gibtown, Jack		P-3
	County seat of Borden Co.			1650	GIDDINGS, Lee	520	Q-8
250	Gainsmore, Matagorda		T-11		County seat of Lee County. Farming. Oil mill and compress.		
8648	GAINESVILLE, Cooke				Perkins Hotel.		
	738	Q-2		50	Giles, Donley		D-3
	County seat of Cooke Co. Farming, truck and stock raising. Railroad shops. Flour mill, elevators, oil refinery, brick yard, etc. Oil prospects.			25	Gill, Harrison		U-4
	Turner and Lindsay Hotels.			250	Gillett, Karnes		P-10
200	Gallatin, Cherokee		T-5	30	Gilliland, Knox		M-2
50	Galle, Guadalupe		P-9	2268	GILMER, Upshur	370	U-3
14255	GALVESTON, Galveston				County seat of Upshur Co. Farming. Oil mills, compress and gins Commercial House.		
	6	U-10			Gilpin, Dickens		K-2
	County seat of Galveston Co. Shipping and farming. Tourist resort. Railroad terminals. Drydocks, marine repair plants,			100	Gindale Bell		-7

Pop.	Co.	Alt.	Key	Pop.	Co.	Alt.	Key
100	Ginger, Rains		S-3	2544	GRAHAM, Young	1040	O-3
150	Girard, Kent		K-2		County seat of Young Co. Farming stock raising and mining. Flour mill and oil refinery.		
30	Girvin, Pecos		G-7		Dolman House		
25	Gist, Jasper		V-8	1364	GRANBURY, Hood	725	P-4
8	Givins, Lamar		T-2		County seat of Hood Co. Farming, stock raising and dairying. Oil and flour mills.		
500	Gladewater, Gregg	323	U-4		Colonial Hotel.		
300	Gladstell, Liberty		T-8	100	Grand Falls, Ward		G-6
50	Gladstone, Walker		T-7	1263	Grand Prairie, Dallas		Q-3
15	Glass, Somervell		P-5		519	Q-3	
275	Glassier, Hemphill		D-1		Farming. Flour mill and gin.		
60	Glen Cove, Coleman		M-5	1528	Grand Saline, Van Zandt		S-4
100	Glenfada, Trinity		T-7		397	S-4	
100	Glenfawn, Rusk		U-5		Farming. Large salt works.		
400	Glenflora, Wharton		S-10	1084	Grandview, Johnson	700	Q-4
100	Glanham, Bastrop		Q-8		Farming. Cotton oil mill. Commercial Hotel.		
800	GLEN ROSE, Somervell	600	P-5	1044	Granger, Williamson	578	Q-7
	County seat of Somervell Co.				Farming. Oil mills and gins. Commercial Hotel.		
100	Glenwood, Upshur		U-4	5	Grant, Burleson		R-8
200	Glidden, Colorado		R-9	900	Grapeland, Houston	480	T-6
15	Globe, Lamar		S-1	821	Grapevine, Tarrant	635	Q-3
140	Glory, Lamar		T-2		Farming.		
300	Gober, Fannin		S-2	58	Grassyville, Bastrop		Q-8
500	Godley, Johnson	895	P-4	20	Graybill, Collin		R-2
50	Goetz, Freestone		S-5	1406	Grayburg, Hardin		V-8
89	Goldforth, Hays		P-9		Lumber mills.		
40	Gold, Gillespie		O-8		Graydon, Chambers		U-9
150	Golden, Wood		T-3	60	Green, Karnes		P-11
100	Goldsboro, Coleman		M-5	50	Greenhill, Titus		U-2
1214	GOLDTHWAITE, Mills	1580	O-6	12394	GREENVILLE, Hunt	549	S-3
	County seat of Mills Co. Farming and stock raising. Oil mills and gins.				County seat of Hunt Co. Farming. Cotton compress, refinery and flour mill. Greenville Lignite Co. Hotel: Beckman.		
	J. H. Saylor, hotel.			100	Greenville, Washington		R-8
2000	GOLIAD, Goliad	167	Q-11	300	Greenwood, Wise		P-2
	County seat of Goliad Co. Farming and grazing. Cotton gins and mill.			400	Gregory, San Patricio	32	Q-13
	Denham Hotel.			20	Gresham, Smith		T-4
50	Golindo, McLennan		Q-6	25	Grice, Upshur		T-3
100	Gomez, Terry		H-3	50	Griffin, Cherokee		T-5
3128	GONZALES, Gonzales	292	Q-10	5	Griffiths Switch, Ellis		Q-4
	County seat of Gonzales Co. Farming and stock raising. Oil mill and gins.			90	Grisby, Shelby		V-5
	C. Koch, hotel.			10	Grimes Switch, Grimes		S-7
50	Goodland, Robertson		R-7	25	Grit, Mason		N-7
200	Goodlett, Hardeman		D-4	1522	GROESBECK, Limestone		R-6
200	Goodnight, Armstrong		C-3		477	R-6	
25	Goodrich, Polk		U-7		County seat of Limestone Co. Farming. Cotton gin and tile works.		
100	Goodwin, Comal		P-9		Brown Hotel.		
1500	Goose Creek, Harris		U-9	300	Groom, Carson		C-3
	Oil district.			150	Grosvenor, Brown		N-5
665	Gordon, Palo Pinto	962	O-4	1103	GROVETON, Trinity		T-7
300	Gordonville, Grayson		Q-2		County seat of Trinity Co. Farming and stock raising. Large lumber mill. Gin.		
614	Goree, Knox	1445	M-2	15	Grow, King		L-2
3200	Gorman, Eastland	1435	O-5	100	Greene, Comal		P-9
	Cotton culture. Commercial Hotel.			350	Gruella, Starr		O-16
25	Gossett, Kaufman		S-4	25	Grundyville, Lampasas		P-7
125	Gouldbusk, Coleman		M-6	50	Guadalupe, Victoria		Q-11
40	Graball, Washington		S-8				
100	Graceton, Upshur		U-3				
800	Graford, Palo Pinto		O-3				

Pop.	Co.	Alt.	Key
	Guajillo, Duval.		O-13
25	Guda, Falls		Q-6
50	Guerra, Jim Hogg.		N-15
400	Guffey, Jefferson		V-9
25	Guion, Taylor		M-5
400	Gulf, Matagorda.		S-11
50	Gunsight, Stephens		N-4
575	Gunter, Grayson	697	R-2
10	Gus, Burleson		R-8
300	Gustine, Comanche		O-5
300	GUTHRIE, King		L-2
	County seat of King Co		
15	Guy, Fort Bend		T-10
25	Guyler, Montgomery		S-8
75	Guy's Store, Leon		S-6
	Hacienda, Uvalde		L-10
40	Hackberry, Edwards		L-9
75	Hackberry, Lavaca		R-10
150	Hagansport, Franklin		T-2
125	Hagerman, Grayson		R-2
50	Hahn, Wharton		R-10
50	Hail, Fannin		S-2
80	Hainesville, Woods		T-3
300	Hale Center, Hale		B-4
75	Hall, San Saba		N-6
1444	HALLETTVILLE, Lavaca	232	Q-10
	County seat of Lavaca Co. Farming and stock raising Cotton oil mills and gins.		
	Hotels: Fink's and City.		
500	Hallsville, Harrison	354	U-4
25	Halsell, Clay		O-2
50	Haley, Fayette		R-9
50	Hamby, Taylor		M-4
2018	HAMILTON, Hamilton	1200	P-6
	County seat of Hamilton Co. Farming. Flour and oil mills. Meissner Hotel.		
1633	Hamlin, Jones	1720	L-3
	Farming and stock raising. Cement plaster mill, compress and oil mill.		
	Morgan House.		
175	Hammond, Robertson		R-7
65	Hamon, Gonzales		Q-10
25	Hamshire, Jefferson		V-9
15	Hancock, Comal		O-9
750	Handley, Tarrant	578	Q-4
300	Hankamer, Chambers		U-9
200	HANSFORD, Hansford		C-1
	County seat of Hansford Co.		
400	Happy, Swisher		B-3
75	Harbin, Erath		O-5
100	Hardin (Walter), Liberty		U-3
75	Hardy, Montague		P-2
50	Hare, Williamson		Q-7
25	Harkeyville, San Saba		4 mi. S
500	Harleton, Harrison		U-3
1784	Harlingen, Cameron		P-16
	Farming and stock raising. Moreland Hotel.		
10	Harmon, Lamar		S-2
10	Harmony, Nacogdoches		U-6

Pop.	Co.	Alt.	Key
250	Harper, Gillespie		N-8
15	Harpersville, Stephens		N-4
15	Harriett, Tom Green		I-6
25	Harris, Terry		G-2
1461	Harrisburg, Harris	40	T-9
40	Harrison, McLennan		Q-6
	Harris Valley, La Salle		N-12
350	Harrod, Wilbarger		E-4
10	Hart, Castro		B-4
80	Hartburg, Newton		W-6
90	Hartley, Hartley		B-2
25	Hartshuff, Red River		U-2
25	Harvey, Brazos		R-7
200	Harwood, Gonzales		P-9
	Hasima, Brazoria		S-11
2300	HASKELL, Haskell	1581	M-3
	County seat of Haskell Co. Farming and stock raising. Oil mill and gins.		
	Hunt House, Fox House.		
00	Haslam, Shelby		V-5
75	Haslet, Tarrant		Q-3
50	Hasse, Comanche		O-5
27	Hatchel, Runnels		M-5
	Hatchton, Gaines		H-4
25	Hatton, Van Zandt		S-4
60	Hawcreek, Fayette		R-9
15	Hawdin, Fort Bend		T-10
225	Hawkins, Wood		T-4
	Hawkinsville, Matagorda		T-11
200	Hawley, Jones		M-4
25	Hawthorne, Walker		T-8
50	Hays, Robertson		R-7
	Haymond, Brewster		F-8
	Hazel, Montgomery		T-8
25	Heald, Wheeler		D-2
2741	Hearne, Robertson	305	R-7
	Farming. Two oil mills and compress.		
	Oxford and Oriental Hotels.		
300	Heath, Rockwell		R-3
500	HEBBRONVILLE, Jim Hogg		O-14
	County seat of Jim Hogg Co.		
150	Hebron, Denton		Q-3
594	Hedley, Donley	2626	D-3
38	Hefner, Knox		M-2
25	Hegar, Waller		S-8
200	Heidenheimer, Bell		V-8
25	Helbig, Jefferson		V-8
184	Helena, Karnes		P-11
30	Helme, Trinity		U-6
371	Helotes, Bexar		O-9
25	Hemming, Cooke		Q-2
450	HEMPHILL, Sabine		W-6
	County seat of Sabine Co.		
2500	HEMPSTEAD, Waller	251	S-8
	County seat of Waller Co. Farming. Fine watermelons. Oil mills.		
	Royal Hotel.		
2500	HENDERSON, Rusk		U-4
	County seat of Rusk Co. Farming and stock raising. Oil and lumber mills		
	Whitson Hotel.		

Pop.	Co.	Alt.	Key
200	Henly, Hays		O-8
2263	HENRIETTA, Clay	891	O-2
	County seat of Clay Co. Farming and stock raising. Flour and oil mills.		
	St. Elmo Hotel.		
10	Henry, Ellis		R-4
1696	HEREFORD, Deaf Smith	3506	B-3
	County seat of Deaf Smith Co. Farming and grazing. Grain elevators.		
	Cordova Hotel.		
30	Hermitage, Cass		U-3
25	Hester, Navarro		R-4
150	Hewitt, McLennan		Q-6
40	Hext, Menard		M-7
100	Hickory Creek, Hunt		S-2
	Hicks, Lee		Q-8
50	Hicksbaugh, Tyler		V-8
26	Hickston, Gonzales		Q-9
1639	Hico, Hamilton	1006	P-5
	Farming and grazing. Oil and flour mills.		
	Midland Hotel.		
500	Hidalgo, Hidalgo	106	P-16
688	Higgins, Lipscomb	2569	D-1
50	High, Lamar		S-2
125	Highbank, Falls		R-7
10	High Hill, Fayette		Q-9
75	High Island, Galveston		V-9
40	Highland, Erath		O-5
75	Hightower, Liberty		U-8
60	Hillister, Tyler		V-7
20	Hillje, Wharton		R-10
6952	HILLSBORO, Hill	634	Q-5
	County seat of Hill Co. Farming. Cotton compress, oil mill and gins. Hillsboro Cotton Mfg. Co. Hotel Wear.		
25	Hillside, McLennan		Q-6
65	Hills Prairie, Bastrop		Q-9
100	Hindes, Atascosa		N-11
20	Hinkles Ferry, Brazoria		T-11
25	Hinkley, Lamar		S-2
50	Hiram, Kaufman		S-4
500	Hitchcock, Galveston	19	L-10
50	Hix, Burleson		R-7
100	Hobson, Karnes		P-11
175	Hochheim, Dewitt		Q-10
300	Hockley, Harris		S-9
10	Hodges, Brown		M-4
20	Holder, Jones		N-5
690	Holland, Bell	523	Q-7
200	Holliday, Archer		N-2
25	Holly, Houston		T-7
75	Holman, Fayette		R-9
125	Holmes, Caldwell		P-9
25	Homer, Angelina		U-6
2500	HONDO, Medina	893	N-10
	County seat of Medina Co. Farming, live stock and fisheries. Summer and winter resort. Gins.		
	A. H. Pike, hotel. Mrs. Richter, hotel.		
10	Honea, Montgomery		T-8
2642	Honey Grove, Fannin	664	S-2
	Farming and stock raising. Oil mill, compress and gins. Commercial Hotel.		
	Honey Island, Hardin		V-8
150	Hood, Cooke		Q-2
400	Hooks, Bowie		V-2
20	Hoover, Gray		C-2
35	Hope, Lavaca		Q-10
	Horger, Jasper		V-7
150	Horn Hill, Limestone		R-6
25	Hornsby, Travis		P-8
75	Hortense, Polk		U-7
25	Horton, Delta		S-2
15	Hot Wells, Hudspeth		C-7
25	House, Fort Bend		T-10
138276	HOUSTON, Harris	64	T-9
	County seat of Harris Co. Petroleum production, rice growing, ocean shipping, etc. General manufacturing. Many oil refineries. Summer and winter resort Hotels: Rice, Bender, Cotton, Milbey and Braeos.		
9683	Houston Heights, Harris		T-9
	A suburb of Houston.		
10	Hovey, Pecos		F-7
50	Howard, Ellis		R-4
583	Howe, Grayson	841	R-2
25	Howellville, Harris (near Clodine)		T-9
400	Howland, Lamar		S-2
25	Howth, Waller		S-8
300	Hoyt, Wood		T-3
2072	Hubbard, Hill	760	R-5
	Farming, fruit and stock raising. Summer and winter resort. Oil mill.		
	E. F. Jarmon, hotel.		
10	Huber, Shelby		V-5
200	Huckabay, Erath		O-4
16	Hud, Scurry		K-3
75	Huffins, Cass		V-3
15	Huffman, Harris		U-9
150	Hufsmith, Harris		T-8
831	Hughes Springs, Cass	400	U-3
	Farming and lumbering. Wilson Hotel.		
250	Hull, Liberty		U-8
80	Hulver, Hall		D-3
3500	Humble, Harris	109	T-9
	Oil, lumber and cattle raising. Truck gardening. Lumber mill.		
15	Humphrey, Hunt		S-3
100	Hungerford, Wharton		S-10
35	Hunt, Kerr		M-9
162	Hunter, Comal		P-9
500	Huntington, Angelina	335	U-6
4689	HUNTSVILLE, Walker	400	T-7
	County seat of Walker Co. Farming. Oil mill and gins. Lindley Hotel.		
14	Hurley, Bailey		A-4
15	Hurnville, Clay		O-1
25	Huron, Hill		Q-5
10	Hurst, Coryell		P-6
20	Hurst, Tarrant		Q-3

Pop.	Co.	Alt.	Key	Pop.	Co.	Alt.	Key	
12	Hutcheson,	Walker	T-7	100	James, Upshur		U-3	
350	Hutchins,	Dallas	R-4		Jameson, Grayson		R-2	
571	Hutto, Williams	700	P-8	20	Jamestown, Newton		W-7	
100	Huxley,	Shelby	V-5		Jardin, Hunt		S-2	
50	Hye,	Blanco	O-8	200	Jarrell, Williamson		P-7	
200	Hylton,	Noian	L-5	2000	JASPER, Jasper		V-7	
				County seat of Jasper Co. Farming and grazing. 15 saw mills in vicinity.				
100	Iago,	Wharton	S-10		Bell-Jim Hotel			
39	Iatan,	Mitchell	K-4	600	Jayton, Kent	2016	K-3	
50	Iberis,	Taylor	M-4	100	Jean, Young		O-3	
40	Ida,	Grayson	R-2	50	Jedd, Bastrop		Q-9	
125	Idalou,	Lubbock	J-2	2549	JEFFERSON,			
	Ideal,	Sherman	B-1		Marion	220	U-3	
100	Ike,	Ellis	R-4		County seat of Marion County.			
50	Illinois Bend,	Montague	P-1		Farming and stock raising. Fish-			
	Imperial,	Fort Bend	G-6		ing. Lumber mills, foundry, and			
27	Imperial,	Focos	G-6		Excelsior Hotel.			
200	Independence,	Washington	R-8	100	Jennings, Lamar		T-2	
25	Index,	Van Zandt	S-4	30	Jericho, Donley		C-3	
60	India,	Ellis	R-4	200	Jermyn, Jack		O-3	
100	Indian Creek,	Brown	N-6	400	Jewett, Leon	506	S-6	
100	Indian Gap,	Hamilton	O-6	75	Jiba, Kaufman		S-4	
15	Indio,	Zavalla	M-11	300	Joaquin, Shelby		V-5	
500	Industry,	Austin	R-9	344	JOHNSON CITY,			
225	Inez,	Victoria	R-11		Blanco	1200	O-8	
170	Ingleside,	San Patricio	Q-13		County seat of Blanco Co.			
97	Ingram,	Kerr	N-9	200	Johnsboro, Erath		P-5	
300	Iola,	Grimes	S-7	150	Johnstown, Red River		T-2	
2041	Iowa Park,	Wichita	1038	F-4	15	Joiner, Fayette	R-9	
100	Ira,	Scurry	K-4	18	Joliet, Caldwell		P-9	
500	Iredell,	Bosque	880	P-5	60	Jolly, Clay	O-1	
250	Ireland,	Coryell		P-6	120	Jonah, Williamson	P-7	
264	Irene,	Hill	R-5	450	Jonesboro, Coryell		P-6	
	Ironosa,	San Augustine	V-6	75	Jones Prairie, Milam		R-7	
80	Ironton,	Cherokee	T-5	50	Jonesville, Harrison		V-4	
357	Irving,	Dallas	Q-3	60	Joplin, Jack		P-3	
15	Irwin,	Rusk	U-5	15	Joseph, Waller		S-8	
20	Isla,	Sabine	W-6	500	Josephine, Collin	588	R-3	
150	Islitas,	Webb	M-14	800	Joshua, Johnson	923	Q-4	
	Ison,	Hutchinson	C-2	200	Josserand, Trinity		U-7	
1350	Italy,	Ellis	576	Q-5	682	JOURDANTON, Atascosa	O-11	
	Farming, Compress and gins.				County seat of Atascosa Co. Farming. Grist mill.			
1599	Itasca,	Hill	704	Q-5		W. E. Yeates, hotel.		
	Farming and stock raising. Cotton mills and gins.							
100	Ivan,	Stephens	N-3		100	Joy, Clay	O-2	
75	Ivanhoe,	Fannin	S-2		100	Joyce (Simon), Webb	M-13	
2	Ives,	Montgomery	T-6		15	Jozye, Madison	S-7	
40	Isor,	Lampasas	P-8	30	Jud, Haskell		L-3	
					Judkins, Ector		G-5	
1373	JACKSBORO, Jack	1074	O-3	25	Judson, Gregg		U-4	
	County seat of Jack County.			35	Julfif, Fort Bend		T-10	
	Farming and grazing. Flour and oil mills.			50	Jumbo, Panola		U-5	
	Hotels: Jacksboro and St. Francis.			536	JUNCTION, Kimble		M-8	
					County seat of Kimble Co.			
100	Jackson,	Montgomery	S-8	89	Junco, Val Verde		K-8	
10	Jackson,	Van Zandt	S-4	25	Justiceburg, Garza		K-3	
3723	Jacksonville,	Cherokee	516	T-5	500	Justin, Denton	644	Q-3
	Farming, fruit and stock raising. Tomato market. Compress, oil mill and gins.							
	Jacksonville Hotel.			15	Kaffir, Schleicher		K-7	
32	Jacobia,	Hunt	S-2	150	Kamey, Calhoun		R-11	
50	Jakehamon,	Comanche		100	Kanawha, Red River		T-1	
	(De Leon 10 mi.)				Karen, Montgomery		S-8	
				100	Karnack, Harrison		V-3	

Pop.	Co.	Alt.	Key	Pop.	Co.	Alt.	Key
787	KARNES CITY,						
	Karnes	404	P-11				
	County seat of Karnes Co. Farming and stock raising.						
	J. A. Farr, hotel.						
143	Kateemy, Mason		N-7				
200	Katy, Harris		S-9				
2501	KAUFMAN, Kaufman	439	R-4				
	County seat of Kaufman Co. Farming, cotton and stock raising. Compress, oil mill and gins. Kaufman Hotel.						
30	Keck, Gonaules		Q-10	50	Kirk, Limestone		R-6
25	Keechi, Leon		S-6	500	Kirkland, Childress	1706	D-4
10	Keenan, Montgomery		T-8	283	Kirven, Freestone		R-5
300	Keene, Johnson		Q-4	15	Kittrell, Walker		T-7
30	Keeter, Wise		P-3	125	Kleburg, Dallas		R-4
5	Keisler, Montgomery		S-8	400	Klondike, Delta		S-2
10	Keith, Grimes		S-7	1	Knapp, Scurry		K-4
300	Keller, Tarrant		Q-3	200	Knickerbocker, Tom Green		K-6
15	Kellogg, Hunt		R-3	60	Knight, Polk		U-7
50	Kellyville, Marion			225	Knippa, Uvalde		M-10
	(Jefferson 5 mi.)		U-3	20	Knot, Howard		J-4
50	Kelsey, Upshur		T-3	698	Knox City, Knox	1530	M-2
750	Kelsy, Angelina	345	U-6		Farming, cotton and stock raising. Gins.		
200	Kemah, Galveston		U-10		C. F. Boyd, hotel.		
1200	Kemp, Kaufman	372	S-4	25	Konohasset, Glasscock		J-5
	Farming.			200	Kopper, Bosque		P-5
	J. A. Stone, hotel.			50	Korville, Harris		T-9
165	Kempner, Lampasas		P-7	22	Kosciusko, Wilson		P-10
47	Kendalia, Kendall		O-9	872	Kosse, Limestone	500	R-6
50	Kendleton, Fort Bend		S-10	500	KOUNTZE, Hardin	85	V-8
2015	Kenedy, Karnes	271	P-11		County seat of Hardin Co.		
	Farming. Oil mill and compress. Goff and Junction Hotels.			300	Kress, Swisher		B-4
600	Kennard, Houston		T-6		Kriegle, Wharton		S-10
300	Kennedale, Tarrant		Q-4	750	Krum, Denton	725	Q-3
200	Kenney, Austin		R-9	100	Kurten, Brazos		R-7
20	Kent, Culberson		D-7	744	Kyle, Hays		P-9
50	Kentucky Town, Grayson		R-2				
50	Kerby, Hill		Q-5				
1343	Kerens, Navarro		S-5	30	Lacasa, Stephens		O-4
	Farming and cotton raising. Gins. KERMIT, Winkler		G-5		Lacoste, Medina	710	N-10
	County seat of Winkler Co.			1713	Ladonia, Fannin	625	S-2
					Farming and cotton raising. Gins. J. M. Hardy, hotel.		
2353	KERRYVILLE, Kerr	1645	N-9	250	Lafayette, Upshur		U-3
	County seat of Kerr County. Farming, cattle and goat raising. Roller mills and gin. St. Charles Hotel.			236	La Feria, Cameron		P-16
				178	Lagarto, Live Oak		P-12
11	Key, Grayson		R-2	1669	LA GRANGE,		
	Kiam, Polk		U-7		Fayette	272	R-9
250	Kildare, Cass		V-3		County seat of Fayette Co. Cotton, corn and truck farming. Oil mills, compress and gins. Lester House.		
850	Kilgore, Gregg	371	U-4	35	Laguna, Uvalde		L-10
1298	Killeen, Bell	833	P-7		Lair, Wheeler		D-2
	Farming. Cotton gins. Hotels: Hudson, California and Killeen.			200	Lajitas, Brewster		E-10
100	Kimball, Bosque		P-5	125	Lake Creek, Delta		T-2
25	King, Coryell		P-6		Lakeland, Liberty		U-8
346	Kingsbury, Guadalupe		P-9	100	Lake Victor, Burnet		O-7
250	Kingsland, Llano		O-7		Lakeview, Floyd		
	Kingsmere, Borden		J-3	300	Lakeview, Hall		C-3
300	Kingston, Hunt		S-2	25	Lakota, Parker		P-3
4770	KINGSVILLE, Kleberg		P-14	175	Lamarque, Galveston		U-10
	County seat of Kleberg Co. Farm-			250	Lamasco Fannin		S-2
				20	Lambert, Parker		P-3



Pop.	Co.	Alt.	Key	Pop.	Co.	Alt.	Key
1188	LAMESA, Dawson		H-3	300	Leesville, Gonzales		P-10
	County seat of Dawson Co. Farming. Cotton gins.				LEFORS, Gray		C-2
	W. R. Kelly, hotel.				County seat of Gray County.		
175	Lamkin Comanche		O-5	200	Leggett, Polk		U-7
25	Lamburg, Atascosa		O-10	100	Leigh, Harrison		V-4
2107	LAMPASAS, Lampasas			200	Lelia Lake, Donley		C-3
	1018		O-7	150	Leming, Atascosa		O-10
	County seat of Lampasas Co. Farming. Oil mill and wholesale grocery.			100	Lemonville, Orange		W-8
1190	Lancaster, Dallas	512	R-4		Lena, Fayette		Q-9
	Farming. Oil mill and gins. Simpson Hotel.			30	Lenz, Karnes		P-11
25	Landrum, Cherokee		T-6	50	Leo, Cooke		Q-2
35	Lane Hunt		R-2	100	Leon, Leon		S-7
50	Lane City, Wharton		S-10	1383	Leonard, Fannin	704	R-2
50	Laneport, Williamson		Q-7		Farming. Flour mills and gins. Rock Hotel.		
234	Laneville, Rusk		U-5	60	Leon Junction, Coryell		P-6
22	Lange, Gillespie		N-8	50	Leon Springs, Bexar		O-9
125	Langtry, Val Verde		J-9	100	Leroy, McLennan		Q-5
128	Lanham, Hamilton		P-5	10	Lesley, Hall		C-3
100	Lanier, Cass		V-3	5	Lester, Hunt		S-2
75	Lannius, Fannin		S-2	28	Letot, Dallas		Q-3
	La Paloma, Cameron		Q-16	120	Levita, Coryell		P-6
100	Lapara, Live Oak		P-12	800	Lewisville, Denton	484	Q-3
889	LaPorte (LaPorte B.), Harris	28	U-9	600	Lexington, Lee	456	Q-8
678	LaPorte Beach (La Porte), Harris		U-9		Farming.		
300	La Pryor, Zavalla		L-11	1117	LIBERTY, Liberty	41	U-8
22710	LAREDO, Webb	438	M-14		County seat of Liberty County. Farming.		
	County seat of Webb County. Winter truck farming. Bermuda onions, grain and live stock raised. Railroad shops. Natatoriums. Packing sheds. Rope, soap and ice factories. Bender and Hamilton Hotels.			500	Liberty Hill, Williamson		P-7
150	La Reforma, Cherokee		O-15		1040		C-1
250	La Rue, Henderson		S-5	10	Lieb, Hutchinson		U-5
50	La Salle, Limestone		R-6	300	Lillian Johnson		Q-4
150	Lassater, Marion		U-3	25	Lina, Bandera		M-9
100	Latch, Upshur		T-3	10	Limpia, Jeff Davis		E-7
100	Latexo, Houston		T-6	70	Lincoln, Lee		Q-8
50	Latium, Washington		R-9	701	Lindale, Smith	559	T-4
	La Tuna, El Paso		A-5		Farming. Canning factories and gins.		
475	Lavernia, Wilson	476	O-10	702	LINDEN, Starr	379	V-3
300	LaVeta, Collin		R-11		County seat of Cass Co.		
25	La Ward, Jackson		R-3	40	Lindenau, DeWitt		Q-10
125	Law, Taylor		M-5	126	Lindsay, Cooke		Q-2
150	Lawrence, Kaufman		R-3	200	Lingleville, Erath		O-5
41	Lawson, Dallas		R-4		Lingo, Nacogdoches		U-6
100	Lawsonville, Rusk		U-5	50	Linniat, Nacogdoches		U-5
100	Lazare, Cottle		D-4	300	Lipan, Hood		P-4
25	Leaday, Coleman		M-6	250	LIPSCOMB, Lipscomb		D-1
500	League City, Galveston		U-10		County seat of Lipscomb County.		
318	LEAKEY, Real		M-9	90	Lisbon Dallas (6 mi. s. of Dallas)		R-3
	County seat of Real County.			75	Lissie, Wharton		S-10
250	Leander, Williamson		P-8	100	Littig, Travis		Q-8
100	Leary, Bowie		V-2	112	Little Elm, Denton		Q-3
150	Lebanon, Collin		R-3	200	Littlefield, Lamb		B-4
200	Leedbetter, Fayette		R-8	225	Little River, Bell		Q-7
20	Lees, Glasscock		J-5	5	Live Oak Hill, Fayette		R-9
300	Leesburg, Camp		T-3	200	Liverpool, Brazoria		T-10
10	Lees Mill, Newton		W-7	928	LIVINGSTON, Polk	194	U-7
					County seat of Polk County. Farming. Ice factory, gins and shingle mill.		
				1645	LLANO, Llano	1029	N-7
					County seat of Llano County. Farming and stock raising. Summer resort. Dixie Graphite Co.		

Pop.	Co.	Alt.	Key	Pop.	Co.	Alt.	Key
	C. E. Shults, hotel.			4051	LUBBOCK, Lubbock	3106	J-2
25	Llano Grande, Hidalgo		P-16		County seat of Lubbock County. Farming and grazing. Cotton gins and creamery. Merrill Hotel.		
60	Lloyd, Denton		Q-3	150	Lucas, Collin		R-3
25	Lobo, Culberson		D-7	10	Lukenbach, Gillespie		N-8
25	Lochridge, Brazoria		T-10	300	Lueders, Jones		M-4
100	Locker, San Saba		N-6	60	Luella, Grayson		R-2
3731	LOCKHART, Caldwell	518	P-9	4878	LUFKIN, Angelina	326	U-6
	County seat of Caldwell County. Farming and cotton culture. Many seed houses. Cotton gins. Mrs. Farris, hotel.				County seat of Angelina County. Farming and lumbering. Saw mills, foundry, veneer factory and wagon works. Bonner and Campbell Hotels.		
1118	Lockney, Floyd		C-4	1502	Lubling, Caldwell	407	P-9
	Farming. Gin.				Farming. Cotton compress and oil mill. Wilson Hotel.		
20	Locust, Grayson		R-1	400	Lumberton (Fletcher), Hardin		V-8
30	Loge, Hall		C-3	100	Lund, Travis		Q-8
150	Lodi, Marion		V-3	49	Lusk, Throckmorton		N-3
75	Lodwick, Marion		U-3	20	Luther, Howard		J-4
15	Logan, Panola		V-4	35	Lutie, Collingsworth		D-3
	Logsdon, Gaines		G-4	20	Luxello, Bexar		O-9
125	Lohn, McCulloch		M-6		Luzon, Kent		L-3
150	Lolita, Jackson		R-11	50	Lydia, Red River		U-2
995	Lometa, Lampasas	1484	O-7	300	Lyford, Cameron		P-16
	Lomo Alta, McMullen		O-12	37	Lyman, Motley		C-4
160	London, Kimble		M-7	75	Lynchburg, Harris		U-9
75	Lone Camp, Palo Pinto		O-4	300	Lyons, Burleson		R-8
10	Lone Cedar, Ellis		R-5	1000	Lyra, Palo Pinto		O-4
25	Lone Grove, Llano		O-7		Lyrie, Liberty		U-8
1017	Lone Oak, Hunt	562	S-3	500	Lytle, Atascosa	745	N-10
	Farming. Gins.			200	Lytton Springs, Caldwell		P-9
50	Lonestar, Cherokee		T-5	1500	Mabank, Kaufman	395	S-4
300	Long Branch, Panola		U-5		Farming. Gns.		
Longfellow, Pecos			G-8	50	Mabelle, Baylor		N-2
100	Long Lake, Anderson		S-6	110	Maedona, Bexar		N-10
150	Long Mott, Calhoun		R-12		Macedonia, Liberty		U-8
50	Longpoint, Washington		R-8	60	Macedonia, Walker		S-7
5713	LONGVIEW, Gregg	330	U-4	50	Maerie, Kinney		K-10
	County seat of Gregg County. Farming. Crate and plow factories. Lumber mills. Elevator, flour and oil mills.			60	Maeson, Franklin		T-3
	Hotels: Bodie, Magnolia and Moberly.			50	Maecun, San Augustine		V-6
150	Longview Jr., Gregg		U-4	25	Madero, Hidalgo		O-16
20	Lonie, Childress		D-3	1079	MADISONVILLE, Madison		S-7
200	Loop, Gaines		N-15		County seat of Madison County. Farming and stock raising. Brizzolara and Shapira Hotels.		
610	Loraine, Mitchell	2258	K-4	75	Madrax, Red River		T-2
450	Lorena, McLennan	593	Q-6	50	Magnet, Wharton		S-10
250	Lorenzo, Crosby		J-2	175	Magnolia, Montgomery		S-8
75	Los Ebanos, Hidalgo		O-16	75	Magnolia Beach, Calhoun		R-11
150	Los Indios, Cameron		Q-16	50	Magnolia Springs, Jasper		V-7
	Losoya, Bexar		O-10	25	Mahl, Nacogdoches		U-5
1093	Lott, Falls	522	Q-7	15	Mahomet, Burnet		P-7
	Farming. Gns. Mrs. Ross, hotel.			150	Mahon, Panola		U-4
30	Lon, Dawson		H-3	450	Malakoff, Henderson	377	S-5
15	Louetta, Harris		T-9	100	Mallard, Montague		P-2
300	Louisa, Wharton		R-10	588	Malone, Hill	482	R-5
	Love Field, Dallas		R-3	50	Maloney, Ellis		R-4
50	Lovelace, Hill		Q-5	150	Malta, Bowie		U-2
625	Lovelady, Houston	300	T-7		Malvern, Leon		S-6
200	Loving, Young		C-3				
10	Lowake, Concho		L-6				

Pop.	Co.	Alt.	Key	Pop.	Co.	Alt.	Key
100	Manchaca, Travis		P-8	400	Maud, Bowie		V-2
100	Manchester, Red River		T-1		Maudlowe, Refugio		R-12
27	Manda, Travis		Q-8	50	Mauriceville, Orange		W-8
100	Manqum, Eastland		N-4	85	Maurin, Gonzales		Q-10
50	Manheim, Lee		Q-8	100	Maverick, Runnels		L-5
75	Mankins, Archer		N-2	50	Maxdale, Bell		P-7
300	Manning, Angelina		U-6	75	Maxey, Lamar		S-2
827	Manor, Travis	525	P-8	400	Maxwell, Caldwell		P-9
	Farming and cotton raising.			400	May, Brown		N-5
719	Mansfield, Tarrant	580	Q-4	200	Maydelle, Cherokee		T-5
100	Manvel, Brazoria		T-10		Mayflower, Newton		W-7
30	Marak, Milam		Q-7	200	Maynard, San Jacinto		T-8
25	Marakville, Bell (Temple 12 mi.)			50	Mayotown, Nacogdoches		U-5
700	Marathon, Brewster	4034	F-8	417	Maypearl, Ellis		Q-4
639	Marble Falls, Burnet	764	O-8	153	Maysfield, Milam		R-7
	Farming and stock raising. Quarries.			50	Mazatlan, Duval		O-14
3553	MARFA, Presidio	4692	E-8	20	McAdoo, Dickens		K-2
	County seat of Presidio County. Grazing. Game. Wax and tank factories. Marfa Mfg. Co. Hotels: Alta Vista and St. George.			5331	McAllen, Hidalgo	125	O-16
150	Margaret, Foard		E-4		Farming and trucking. Creamery, bonded warehouse and gin. Casa de Palmas Hotel.		
80	Marianna, Victoria		Q-11	700	McCaulley, Fisher	1882	L-3
13	Marie, Runnels		L-5	40	McClanahan, Falls		R-6
250	Marietta, Cass		U-3	25	McCollum, Montague		P-1
25	Marilee, Grayson		R-2	75	McCoy, Kaufman		S-3
525	Marion, Guadalupe	644	O-9	30	McCoy, Atascosa		O-11
400	Markham, Matagorda		S-11	450	McDade, Bastrop	568	Q-8
35	Markley, Young		O-2	27	McDaniels, Ellis		Q-6
4310	MARLIN, Falls	982	R-6	1	McGirk, Hamilton		O-6
	County seat of Falls County. Farming. Marlin Oil Co. Central Texas Ice & Light Co. Majestic Hotel.			2088	McGregor, McLennan	715	Q-5
350	Marques, Leon		S-6		Farming. Flour mill and gin.		
150	Mars, Van Zandt		S-4	6677	McKINNEY, Collin	592	R-3
14271	MARSHALL, Harrison	375	V-4		County seat of Collin County. Farming, cotton and stock raising. Elevator, flour mill, compress and gins. Commercial Hotel.		
	County seat of Harrison County. Farming, dairying and lumbering. Railroad shops, 2500 employees. Car wheel works, foundry, pottery and oil mill. Marshall and Ginnochio Hotels.			35	McKinney Springs, Brewster		F-10
3105	Mart, McLennan		R-6	741	McLean, Greay	2812	D-2
	Farming and cotton raising. Oil mill, compress and gins. Abrams Hotel.			25	McLendons, Rockwall		R-3
500	Martindale, Caldwell	527	P-9	100	McMahan, Caldwell		P-9
50	Martinez, Bexar		O-10	200	McNeil, Travis		P-8
100	Martins Mills, Van Zandt		S-4	25	McPeck, Upshur		U-3
50	Martinsville, Nacogdoches		V-5	200	McQueeney, Guadalupe		P-9
100	Maryneal, Nolan		L-5	12	Meadow, Terry		H-2
150	Marysville, Cooke		Q-2	35	Mecca, Madison		S-7
1137	MASON, Mason	1550	N-7	200	Medicine Mound, Hardeman		E-4
	County seat of Mason County. Matador Jr., Motley.			200	Medill, Lamar		T-1
40	Massey, Hill		Q-5	250	Medina, Bandera		N-9
30	Masters, Throckmorton		N-3	25	Medina Lake, Medina		N-9
692	MATADOR, Motley		C-4	10	Meeks, Bell		Q-7
	County seat of Motley County. Matador Jr., Motley.			500	Megargel, Archer		N-2
600	Matagorda, Matagorda	9	S-11	253	Melissa, Collin		R-2
700	Mathis, San Patricio	161	P-13	100	Melon, Frio		N-11
100	Matinsburg, Camp		T-3	400	Melrose, Nacogdoches		U-6
150	Matthews, Colorado		S-10	250	Melvin, McCulloch		M-7

Pop.	Co.	Alt.	Key	Pop.	Co.	Alt.	Key
100	Mendoza, Caldwell		P-9	500	Minden, Rusk		U-5
25	Mentz, Hill		Q-5	2299	Mineola, Wood	404	T-4
20	Merola, Colorado		R-9		Farming and stock raising. Cotton compress, oil and saw mills. Bailey Hotel.		
3414	Mercedes, Hidalgo		P-16	400	Minera (Santo Tomas), Webb		M-13
	Irrigated winter truck farming. Oranges raised. Cotton gins.			183	Mineral, Bee		P-11
500	Mercury, McCulloch	1426	N-6	7890	Mineral Wells, Palo Pinto	850	O-3
75	Mereta, Tom Green		L-6		Summer and winter resort. Large drinkin' pavilion. 150,000 visitors annually. Oil fields. Hotels: Crasy Well, Damron and Fairfield Inn.		
1024	MERIDIAN, Bosque	791	P-5	100	Minerva, Milam		Q-7
	County seat of Bosque County. Farming.			25	Mingo, Denton		Q-3
322	Merit, Hunt		R-2	1000	Mingus, Palo Pinto	946	O-4
1810	Merkel, Taylor	1867	L-4		Farming. Flour mill.		
	Farming, cotton and stock raising. Commercial Hotel. Collins House.			75	Minter, Lamar		T-2
	Merle, Burleson		R-8	25	Miriam, Liberty		U-8
	Merrimac, Wood		T-3	3847	Mission, Hidalgo	149	O-16
342	Mertens, Hill	533	Q-5		Farming. Bottling works, wholesale groceries and cotton gin. Hotel Mission.		
650	Mertzon, Irion	2185	K-6	66	Mission Valley, Victoria		Q-11
35	Mesa, Grimes		S-7	125	Missouri City, Fort Bend		T-9
674	Mesquite, Dallas	485	R-3	400	Mobeetie, Wheeler		D-2
3482	Mexia, Limestone	537	R-6	50	Mobile, Tyler		V-7
	Farming and cotton raising. Brick works, oil mills and gins. Commercial Hotel.			200	Moffat, Bell		Q-7
175	Meysersville, Dewitt		Q-11	25	Moglia, Webb		N-14
935	MIAMI, Roberts	2744	D-2	100	Mohine, Lampasas		O-6
	County seat of Roberts County. Farming.			25	Mollie, Red River		U-2
	T. L. Graham, hotel. Michies, Dawson		J-4	200	Monahans, Ward		G-6
10	Mickey, Floyd		C-4	50	Monaville, Waller		S-9
100	Middleton, Leon		S-7	20	Monico, Van Zandt		S-4
25	Middle Water, Hartley		A-2	150	Monington, Anderson		S-6
50	Midfields, Matagorda		S-11	150	Monkstown, Fannin		S-1
1795	MIDLAND, Midland	2763	H-5	15	Mont, Lavaca		Q-10
	County seat of Midland County. Cattle grazing and farming. Yeakel and Llano Hotels.			300	MONTAGUE, Montague	1076	P-2
1298	Midlothian, Ellis	749	Q-4		County seat of Montague County. 200	Montalba, Anderson	S-5
	Farming, grist and oil mills. Midway, Madison		S-7	100	Mont Belvieu, Chambers		U-9
500	Midway, Madison		S-7		Monte Christo, Hidalgo		O-16
112	Midyett, Panola		V-4	100	Montell, Uvalde		L-9
66	Miguel, Frio		N-11	50	Monteola, Bee		P-11
250	Mikeska, Live Oak		P-12	10	Montfort, Navarro		R-4
100	Milam, Sabine		W-6	450	Montgomery, Montgomery		T-8
800	Milam, Milam		R-7	75	Monticello, Gonzales		P-10
200	Milburn, McCulloch		N-6	40	Monticello, Titus		T-3
20	Mildred, Navarro		R-5	200	Montopolis, Travis		P-8
853	Miles, Runnels	1800	L-6	1106	Moody, McLennan	783	Q-6
	Farming and grazing. Childrens Hotel.				Moonshine Hill, Harris		T-9
940	Milford, Ellis	601	Q-5	450	Moore, Frio	650	N-10
25	Mill Creek, Washington		R-8	150	Mooreville, Falls		Q-6
300	Miller Grove, Hopkins		S-3	50	Morales, Jackson		R-10
250	Millersview, Concho		M-6	600	Moran, Schackelford	1350	N-4
400	Milliet, La Salle		N-11	50	Moravia, Lavaca		Q-9
150	Millheim, Austin		S-9	672	Morgan, Bosque	721	P-5
400	Milliean, Brazos		S-8	250	Morgan Mill, Erath		O-4
800	Millasp, Parker	815	P-4	20	Morince, Van Zandt		S-3
25	Millwood, Collin		R-3		Moro, Taylor		L-5
150	Milton, Lamar		T-2		Morrill, Cherokee		T-6
200	Milvid, Liberty		U-8	50	Morris Ranch, Gillespie		N-8
				240	Moscow, Polk		U-7

Pop.	Co.	Alt.	Key	Pop.	Co.	Alt.	Key
40	Mosheim, Bosque		P-6	25	Nat, Nacogdoches		U-5
20	Moss Bluff, Liberty		U-9	250	Natalia, Medina		N-10
10	Mosville, Cooke		Q-2	100	Nathan, Trinity		U-7
100	Motley, Rusk		U-4	5060	Navarro, Navarro		R-5
25	Mott, Angelina		V-7		Navasota, Grimes	218	S-8
900	Moulton, Lavaca	384	Q-10		Farming and stock raising. Coop- erage shoeks, lumber and cotton seed products. Fuller's earth quarries. Small factories. Camp Hotel.		
95	Mound, Coryell		P-6	15	Navidad, Jackson		R-10
47	Mountain Home, Kerr		M-8	25	Navo, Denton		Q-2
50	Mountain Peak, Ellis		Q-4	50	Naylor, Donley		C-3
60	Mountain Spring, Cooke		Q-2	25	Nazareth, Castro		B-3
626	Mt. Calm, Hill	601	R-5	25	Neal, Madison		S-7
750	Mt. Enterprise, Rusk		U-5	25	Nebo, Cherokee		T-5
4099	MT. PLEASANT, Titus	397	U-3	250	Necessity, Stephens		N-4
	County seat of Titus County. Farming, fruit and stock raising. Summer resort. Stave mill, gins and oil mill.			10	Nechantiz, Fayette		Q-9
	Shook Hotel.			350	Neches, Anderson		T-5
200	Mt. Selman, Cherokee		T-5	100	Nederland, Jefferson		V-9
	Mt. Sharp, Hays		P-8	25	Nedra, Wharton		S-10
100	Mt. Sylvan, Smith		T-4	250	Needville, Fort Bend		S-10
1212	MT. VERNON, Franklin	476	T-3	100	Neely, San Augustine		V-6
	County seat of Franklin County. Farming and stock raising. Plan- ing mill and gins.			100	Negley, Red River		T-1
	T. A. Palmer, hotel.			50	Neinda, Jones		L-4
	Mud, Travis		P-8	175	Nelsonville, Austin		R-9
25	Muellerville, Washington		R-8	25	Nelta, Hopkins		T-2
400	Muenster, Cooke		Q-2	35	Nemo, Somervell		P-4
10	Mulberry, Red River		T-1	56	Neola, Hunt		S-3
200	Muldoon, Fayette		Q-9	25	Nesbitt, Robertson		R-7
90	Muleshoe, Bailey		A-4	20	Nettville (Dull), La Salle		N-12
558	Mullin (Mullen), Mills	1430	O-6	250	Neuville, Shelby		V-5
150	Mumford, Robertson		R-7	578	Nevada, Collin	615	R-3
998	Munday, Knox	1482	M-2	350	Newark, Wise		P-3
30	Munger, Limestone		R-5	175	New Baden, Robertson		R-7
500	Murchison, Henderson	458	S-4	175	New Berlin, Guadalupe		O-10
10	Muriel, Tarrant		Q-3	869	New Boston, Bowie	367	U-2
125	Murphy, Collin		R-3	3590	NEW BRAUNFELS, Comal	637	O-9
41	Murray, Young		N-3		County seat of Comal County. Farming and grazing. Flour mills and lime works.		
25	Murvaul, Panola		V-5		Plaza Hotel.		
28	Mustang, Denton		Q-2	75	Newburg, Comanche		Q-6
100	Myers, Burleson		R-8	100	Newby, Leon		S-6
50	Mykawa, Harris		T-9	150	New Caney, Montgomery		T-8
400	Myra, Cooke		Q-2	1452	Newcastle, Young		N-3
200	Myrtle Springs, Van Zandt		S-4		Farming and mining. Flour mill and gin.		
					Harris Hotel.		
10	Nabors, Haskell		M-3	200	New Fountain, Medina		N-10
3546	NACOGDOCHES, Nacogdoches	283	U-5	60	Newhart, Montague		P-2
	County seat of Nacogdoches County. Farming, cotton and stock raising. Creamery, whole- sale grocery, saw and oil mills. Redland Hotel.			50	New Hope, Dallas		R-3
40	Nada, Colorado		R-10	125	Newlin, Hall		D-3
887	Naples, Morris	399	U-2	275	Newport, Clay		P-2
	Farming. Cotton gins.			250	New Salem, Rusk		U-5
	Floyd Hotel.			500	Newsome, Camp	453	T-3
18	Naruna, Burnet		O-7	30	New Sweden, Travis		P-8
350	Nash, Bowie		V-2	1000	NEWTON, Newton		W-7
200	Nash, Ellis		R-4		County seat of Newton County. Saw mill.		
	Nashland, Jefferson		V-9		Snell Hotel.		

Pop.	Co.	Alt.	Key	Pop.	Co.	Alt.	Key
36	Nickle, Gonzales		Q-10	300	Odell, Wilbarger		E-4
90	Niederwald, Caldwell		P-9	350	Odessa, San Patricio		Q-13
10	Nigton, Trinity		U-6	750	O'DESSA, Ector	2887	H-5
15	Nile, Milam		Q-7		County seat of Ector County.		
75	Nimrod, Eastland		N-5	100	O'Donnell, Lynn		J-3
15	Nine, McCulloch		M-7	300	Oenaville, Bell		Q-7
35	Ninevah, Leon		S-6	25	O'Farrell, Cass		V-3
25	Nix, Lampasas		O-7	50	Ogburn, Wood		T-3
1124	Nixon, Gonzales	395	P-10	25	Ogle, Lampasas		O-7
	Farming. Gins. D. S. Talley, hotel.			300	Oglesby, Coryell		P-6
50	Nobility, Fannin		R-2	10	Ohio, Hamilton		P-6
25	Noble, Lamar		S-2		Oilla, Orange		W-8
1422	Nocona, Montague	930	P-2	200	Oklauion, Wilbarger		E-4
	Farming and grazing. Shoe fac- tory and oil mill.			35	Okra, Eastland		N-5
	Hotel Nocona.			30	Ola, Kaufman		S-4
35	Nogalus, Trinity		T-6	600	Olden, Eastland		N-4
13	Nolan, Nolan		L-5	50	Oldenburg, Fayette		R-9
150	Nolanville, Bell		P-7	50	Old Glory, Stonewall		L-3
100	Nome, Jefferson		V-9	25	Oletha, Limestone		R-6
50	Nona, Hardin		V-8	15	Olin, Hamilton		P-5
50	Noode, Jones		L-4	50	Olivia, Calhoun		R-11
75	Nooday, Smith (5 mi. N.W. of Flint)		T-4		Ollie, Polk		U-7
111	Nopal, Dewitt		P-10	50	Olmito, Cameron		Q-17
443	Nordheim, Dewitt		P-11	1164	Olney, Young		N-2
35	Norfolk, Rusk		U-4		Farming and stock raising. Coal and oil. Gins.		
602	Normangee, Leon	375	S-7		Mrs. Southerland, hotel.		B-4
250	Normanna, Bee		P-12		OLTON, Lamb		U-4
75	Norse, Bosque		P-5		County seat of Lamb County.		
25	Northfield, Motley		D-4	492	Omaha, Morris	399	U-2
	Northford, Gray		D-2		Farming. Gins.		
	North Houston, Harris		T-9		Mrs. Bessley, hotel.		
	North Jefferson, Marion		V-3	225	Onan, Smith		T-4
364	North Pleasanton, Atascosa		O-11	155	Onalaska, Polk		T-7
25	Northrup, Lee		Q-8	26	Opelaka, Henderson		S-4
400	North Zulch, Madison		S-7	100	Oplin, Callahan		M-5
120	Norton, Rannels		L-5	5	O'Quinn, Fayette		Q-9
50	Norwood, McLennan		Q-6	90	Oran, Palo Pinto		O-3
10	Nottawa, Wharton		S-10	9212	ORANGE, Orange	10	W-8
175	Novice, Coleman		M-5		County seat of Orange County. Farming and lumbering. Paper box and saw mills. Summer and winter resort. Paper mills, ship- building plants, lumber and rice mill.		
50	Noxville, Kimble		M-8		Holland Hotel.		
35	Nubia, Taylor		L-5	200	Orange Grove, Jim Wells		P-13
100	Nuecestown, Nueces		Q-13	100	Orangeville, Fannin		R-2
75	Nugent, Jones		M-4	200	Orchard, Fort Bend		S-9
250	Nursery, Victoria		Q-11	300	Ore City, Upshur		U-3
				8	Orient, Tom Green		L-6
60	Oak, Ellis		Q-4		Ora, Reeves		E-5
80	Oakalla, Burnet		P-7	15	Orelana, Cooke		Q-1
10	Oakdale, Liberty		U-8	200	Orphans Home, Dallas		R-3
	Oak Forrest, Gonzales		P-10	25	Orth, Young		N-3
100	Oak Grove, Bowie		U-2	142	Osage, Coryell		P-6
150	Oakhurst, San Jacinto		T-7	400	Osecola, Hill		Q-5
250	Oakland, Colorado		R-9		Otey, Brazoria		T-10
431	OAKVILLE, Live Oak		P-12	42	Otis, Bastrop		Q-9
	County seat of Live Oak County.			200	Ottine, Gonzales		P-9
1100	Oakwood, Leon	290	S-6	200	Otto, Falls		R-6
10	Oblate, Hidalgo		O-16	400	Ovalo, Taylor		M-5
350	O'Brien, Haskell		M-2	500	Overton, Rusk	507	U-4
25	Ocee, McLennan		Q-6	228	Ovilla, Ellis		Q-4
500	OCHILTREE, Ochiltree		C-1	125	Owens, Brown		N-5
	County seat of Ochiltree County.				Owenville, Sutton		L-8
30	Ocker, Bell		Q-7	50	Owlett Green, Van Zandt		S-4
28	O'Daniel, Guadalupe		P-10				
25	Odds, Limestone		R-6				



Pop.	Co.	Alt.	Key	Pop.	Co.	Alt.	Key
	County seat of Hardeman County.			750	Remlig, Jasper		V-6
	Farming and stock raising. Com-			10	Rendham, Baylor		N-2
	press, gins and flour mill.			200	Renner, Collin		R-3
	Quannah Hotel.			90	Reno, Lamar		T-2
398	Queen City, Cass		V-3	80	Reno, Parker		P-3
40	Quemado, Maverick		K-11	25	Retreat, Grimes		S-8
50	Quihi, Medina		N-10	50	Retta (Retta Switch), Johnson		Q-4
580	Quinlan, Hunt	502	S-3	25	Reynard, Houston		T-6
125	Quitaque, Brisco		C-4		Rhea, Farmer		A-3
900	QUITMAN, Wood		T-3	150	Rheland, Knox		M-2
	County seat of Wood County.			400	Rheme, Wise		Q-3
	Farming.			250	Rhonesboro, Upshur		T-3
				200	Ricardo, Kleberg		P-14
25	Race Track, Delta		S-2	611	Rice, Navarro		R-5
	Ragley, Panola		U-5	50	Rices Crossing, William-		Q-8
100	Rainbow, Somervell		P-4	400	Richards, Grimes		S-8
33	Raisin, Victoria		Q-11	500	Richardson, Dallas	620	R-3
15	Raleigh, Navarro		R-5	350	Richland, Navarro		R-5
900	Rails, Crosby		J-2	300	Richland Springs, San Saba		N-6
60	Ramireza, Live Oak		P-12	1273	RICHMOND, Fort Bend		
100	Ramirez, Duval		O-14		County seat of Fort Bend County.		
50	Ramadell, Wheeler		D-2		Farming and grazing. Imperial		
100	Rancho, Gonzales		P-10		Sugar Co., near. Oil mill.		
60	Randado, Jim Hogg		N-15		National Hotel.		
400	Randolph, Fannin		R-2	25	Ridge, Robertson		R-7
16205	Ranger, Eastland	1433	O-4	200	Ridgeway, Hopkins		S-3
	Oil, farming and grazing. Rock			550	Riesel, McLennan		Q-5
	crusher plant.			400	Ringold, Montague		P-1
	Hotels: Wilson, Theodore, South-			200	Rio Frio, Real		M-9
	land, McCleskey and De Graf.			3000	RIO GRANDE,		
60	Rankin, Ellis		R-5		Starr		O-16
100	Rankin, Upton		H-5		County seat of Starr County.		
20	Rast, Van Zandt		S-4		Grazing and mining. Ice plant.		
1000	Ratcliff, Houston		T-6		Hotels: Philips, Harris, Post		
40	Raftan, Delta		S-2		View and Kain.		
412	Ravenna, Fannin		R-2	225	Riohondo, Cameron		Q-16
25	Rayburn, Liberty		U-8	60	Riomedina, Medina		N-10
75	Rayland, Foard		E-4	450	Riovista, Johnson		Q-5
400	Raymondville, Cameron		P-16	50	Ripley, Titus		T-2
200	Rayner Jr., Colorado		S-10	906	Rising Star, Eastland		
15	Raywood, Liberty		U-8		Farming. Gin.		
15	Razor, Lamar		S-1		Livingston Hotel.		
400	Reagan, Falls		R-6	75	Rita, Burleson		R-7
50	Reagan Wells, Uvalde		M-10	30	Riverby, Fannin		
200	Reagor Springs, Ellis		R-4		(Monkstown 5 mi.)		S-1
300	Realitos, Duval		O-14	200	Riverside, Walker		T-7
60	Rebecca, San Augustine		V-6		River View, Red River		U-2
18	Rector, Denton		Q-3	450	Riviera, Kleberg		P-14
200	Redford, Presidio		E-10	100	Riviera Beach, Kleberg		P-14
45	Red Hill, Cass		V-3	28	Roane, Navarro		R-5
25	Red Lawn, Cherokee		T-5	400	Roanoke, Denton		Q-3
350	Red Oak, Ellis		R-4	250	Roans Prairie, Grimes		S-8
300	Red Rock, Bastrop		Q-9	400	Roaring Springs, Motley		C-4
15	Red Springs, Baylor		M-2	50	Robberson, Starr		O-15
300	Redwater, Bowie		V-2	20	Robbins, Leon		S-6
80	Redwood, Guadalupe		P-9	750	ROBERT LEE, Coke		L-5
300	Reedville, Caldwell		P-9		County seat of Coke County.		
25	Reese, Cherokee		T-5	50	Robinson, McLennan		Q-6
933	REFUGIO, Refugio		Q-12	948	Robstown, Nueces		P-6
	County seat of Refugio County.				Farming. Gins.		
25	Regency, Mills		N-6		Brindle Hotel.		
75	Reily Springs, Hopkins		T-3	635	ROBY, Fisher	1982	L-4
75	Reinhardt, Dallas		R-3		County seat of Fisher County.		
150	Reiser, Webb		N-14				
125	Reklaw, Cherokee		T-5				
10	Reliance, Brasos		R-7				

Pop.	Co.	Alt.	Key	Pop.	Co.	Alt.	Key
450	Rochelle, McCulloch		N-7	1000	Rotan, Fisher	579	L-3
400	Rochester, Haskell		M-3		Farming and stock raising.		
30	Rock Creek, McLennan				Mrs. Leming, hotel.		
	(Waco 5 mi.)		Q-6	200	Round Mountain, Blanco		O-8
250	Rock Crusher, Coleman		M-5	900	Round Rock, Williamson		P-9
2323	Rockdale, Milam	462	Q-7		Farming and quarrying. Broom		
	Coal mining, farming and fruit				factory and gins.		
	raising. Oil mill and gins.			150	Round Top, Fayette		N-2
	LaBrie Hotel.			20	Rowden, Callahan		M-5
80	Rockett, Ellis		R-4	300	Rowena, Runnels		L-6
12	Rockford, Lamar		T-2	125	Rowllett, Dallas		R-3
150	Rockhill, Collin		R-3	600	Roxton, Lamar	506	S-2
10	Rockhouse, Austin		R-9	1289	Roysie City, Rockwall	554	R-3
500	Rock Island, Colorado		R-10		Farming, Oil Mill.		
200	Rockland, Tyler		V-7		Grand Central Hotel.		
1545	ROCKPORT, Aransas	6	Q-12	150	Royston Fisher		L-3
	County seat of Aransas County.			30	Roznov, Fayette		R-9
	Stock raising. Fish and oyster			10	Ruben, Fannin		S-2
	catching. Summer and winter			50	Rucker Comanche		O-5
	resort.				Rudd, Schleicher		L-7
	La Playa Hotel.			25	Rugby, Red River		T-2
987	ROCKSPRINGS,	2400	L-9	100	Ruidosa, Presidio		D-9
	County seat of Edwards County.			890	Rule, Haskell		M-3
1388	ROCKWALL, Rock-	596	R-3		Farming. Oil mill.		
	wall.			100	Ruliff, Newton		P-8
	County seat of Rockwall County.			1070	Runge, Karnes	304	W-11
	Farming. Oil mill and gins.				Farming. Cotton gins.		
	Stephenson Hotel.				Lyons Hotel.		
125	Rockwood Coleman		M-6		Running Water, Hale		B-4
125	Rocky Branch, Morris		U-3	53	Rural Shade, Navarro		S-5
75	Roddy, Van Zandt		S-4	2348	RUSK, Cherokee	487	T-5
14	Rodney, Navarro		R-5		County seat of Cherokee County.		
10	Roeder, Titus		U-3		Farming, grazing and lumbering.		
200	Roganville, Jasper		V-7		Box factory and lumber mills.		
1256	Rogers, Bell	359	Q-7		Claiborne Hotel.		
	Farming and cotton raising. Cot-			25	Russell, Leon		S-6
	ton gins.			50	Rustler, Eastland		O-4
10	Rogerstown, Ochiltree		C-1	100	Rutersville, Fayette		R-9
36	Roland, Collin		R-2	33	Ruth, Concho		M-7
500	Roma, Starr		N-16	25	Rutledge, Williamson		P-8
50	Romayor, Liberty		U-8	200	Ryals, Montgomery		T-8
50	Romero, Hartley		A-2	200	Rye, Liberty		U-8
135	Romney, Eastland		N-5	15	Rylie, Dallas		R-4
51	Roosevelt, Kimble		L-8				
300	Rosalie, Red River		T-2	60	Sabanno, Eastland		N-5
190	Rosanky, Bastrop		Q-9	30	Sabathany, Parker		P-3
1079	Roscoe, Nolan	2380	L-4	1458	Sabinal, Uvalde	957	M-10
	Farming, dairying and stock rais-				Farming and stock raising. Cream-		
	ing.				ery and gins.		
1516	Rosebud, Falls	392	Q-7		Mitchell House.		
	Farming. Cotton oil mill and			350	Sabine, Jefferson		V-9
	gins.			400	Sabine Pass, Jefferson		V-9
	Aransas Pass Hotel.			100	Sabinetown, Sabine		W-6
200	Rose Hill, Harris		S-9	50	Sachse, Dallas		R-3
	Rosenberg,			100	Sacul, Nacogdoches		U-5
1279	Fort Bend	105	S-10	400	Sadler, Grayson		Q-2
	Farming and stock raising. Brick			200	Sage, Burnet		O-7
	work and gins.			400	Saginaw, Haskell		L-3
25	Rosenthal, McLennan		Q-6	100	Sagerton, Tarrant		Q-3
300	Rosewood, Upshur		T-3	400	Salado, Bell		P-11
50	Rosharon, Brazoria		T-10		Salem, Victoria		R-7
18	Ross, McLennan		Q-6	200	Salesville, Palo Pinto		P-3
225	Rosser, Kaufman		R-4	100	Salinero, Starr		N-16
300	Rosston, Cooke		Q-2	125	Salmon, Anderson		T-6
30	Rossville, Atascosa		O-10	25	Salona, Montague		P-2
30	Roswell, Bexar		Q-5				

Pop.	Co.	Alt.	Key	Pop.	Co.	Alt.	Key
200	Saltito, Hopkins		T-3		McMeans and Armstrong		
20	Salty, Milam		Q-8	150	San Patricio		P-13
125	Samfordyce, Hidalgo		O-16	2011	SAN SABA, San Saba		
61	Sample, Gonzales		P-10			1200	O-7
9392	SAN ANGELO, Tom Green	1847	L-6		County seat of San Saba County. Farming and grazing. Cotton gins, flour mill and elevator.		
	County seat of Tom Green County. Semi-arid farming and stock raising. Tourist resort. Rail- road shops. Oil mill.			453	Sansom, Uvalde	930	M-10
	St. Angelus Hotel (new). Lan- don Hotel.			1407	Santa Anna, Coleman		
161379	SAN ANTONIO, Bexar	648	O-10			1743	N-6
	County seat of Bexar County. Winter and health resort with many sulphur springs. Railroad center. Trade territory has stock and farming interests of \$345- 000,000. The yearly output of the city factories is \$30,000,000. Hotels: Gunter, Menger, St. Anthony and Lanier.			200	Santa Cruz, Duval		O-14
1268	SAN AUGUSTINE, San Augus- tine		V-6	75	Santa Elena, Starr		O-15
	County seat of San Augustine County. Farming. Many saw mills. Oil mill and compress.			40	Santa Maria, Cameron		P-17
	Moss Hotel.			500	Santo, Palo Pinto	816	O-4
5070	San Benito, Cameron		Q-16	400	Santo Tomas, Webb		M-13
	Irrigated farming. Sugar mill and gins.			30	San Ygnacio, Zapata		M-15
	San Benito Hotel.			25	Sapoak, Erath		O-4
	San Bernardo, Brazoria		T-11	200	Saragosa, Reeves		E-7
100	Sand, Bastrop		Q-9	100	Saralvo, Ellis		Q-4
1000	SANDERSON, Terrell			900	Saratoga, Hardin		V-8
	2728		G-8		Sarco Creek, Goliad		Q-12
	County seat of Terrell County. Farming.			10	Sargent, Matagorda		T-11
50	Sandflat, Smith		T-4	300	SARITA, Willacy		P-14
150	Sandia, Jim Wells		P-13	300	Saron, Trinity		T-7
2000	SAN DIEGO, Duval	312	O-13	15	Sash, Fannin		S-1
	County seat of Duval County. Farming. Wholesale grocery and gins.			125	Saspamco, Wilson		O-10
30	Sandoval, Williamson		Q-7	50	Satin, Falls		Q-6
30	Sandy, Blanco		O-8	28	Sattler, Comal		O-9
75	Sandy Point, Brazoria		T-10	10	Satur, Gonzales		Q-9
300	San Elizario, El Paso		A-6	15	Savage, Fannin		S-2
	Saner Jr., Polk		U-7	378	Savoy, Fannin		R-2
350	San Felipe, Austin		S-9	35	Sayers, Bexar		O-10
100	San Gabriel, Milam		Q-7		Sayers Sta (Sayersville), Bastrop		Q-8
1204	Sanger, Denton	866	Q-2	25	Sayersville (Sayers), Bastrop		Q-8
100	San Jose, Bexar		O-10		Scallorn, Mills		O-6
500	San Jose (Dolores), Webb		M-13	300	Schertz, Guadalupe		O-9
1203	San Juan, Hidalgo		P-16	25	Schley, Harrison		V-4
	San Leon, Galveston		U-10	50	Schoenau, Austin		R-9
4527	SAN MARCUS, Hays			25	Schroeder, Goliad		Q-11
	County seat of Hays County. Stock ranching, cotton and corn farming. U. S. Fisheries. School town. Wonderfully scenic. Sum- mer and winter resort. Oil mill and gins.			1246	Schulenburg, Fayette	346	Q-9
	Hotels: Hofheins, Williamson,				Farming and cotton culture. Oil mill and gins		

Pop.	Co.	Alt.	Key	Pop.	Co.	Alt.	Key
10	Seattle, Coryell		P-6	500	SIERRA BLANCA, Hudspeth	4512	C-6
10	Seawillow, Caldwell		P-9		County seat of Hudspeth County.		
200	Sebastian, Cameron		P-16	30	Sikes, Hunt		S-3
200	Security, Montgomery		T-8	30	Silas, Shelby		V-5
135	Sedwick, Schackelford		N-4	100	Silcom, Bowie		U-2
30	Seglar, Bexar		N-10	300	Silsbee, Hardin		V-8
200	Segno, Polk		U-8		Silver, Coke		K-5
35	Segovia, Kimble		M-8	100	Silver Lake, Van Zandt		T-4
3631	SEGUIN, Guada- lupe	550	P-9	416	SILVERTON, Briscoe		C-3
	County seat of Guadalupe County. Farming and stock raising. Cot- ton gins and flour mills.			90	Silver Valley, Coleman		M-5
	Hotels: Aumont and Park.			15	Simmons, Live Oak		O-12
	Sejita, Duval		O-14	150	Simma, Bowie		U-2
25	Selden, Erath		P-5	200	Simon Sta. (Joyce), Webb		M-13
100	Selfs, Fannin		S-2	10	Simonds, Dallas		R-4
50	Selma, Bexar		O-9	75	Simonton, Fort Bend		S-9
300	SEMINOLE, Gaines		G-4	75	Singleton, Grimes		S-7
	County seat of Gaines County.			1058	SINTON, San Patricio		
20	Senate, Jack		O-3		County seat of San Patricio Coun- ty. Truck farming. Cotton gins.		
79	Senior, Bexar		O-10		Mrs. Kennamer, hotel.		
75	Serbin, Lee		Q-8	10	Sion, Walker		S-7
50	Sevenoaks, Polk		U-7	650	Sipe Springs, Comanche		
50	Sexton, Sabine		V-6	15	Sisk, Erath	1450	N-5
2121	SEYMOUR, Baylor	1290	N-2	114	Sisterdale, Kendall		N-9
	County seat of Baylor County. Farming and stock raising. Oil mill and gins.			35	Sivells Bend, Cooke		Q-1
	Shalain and Washington Hotels.			900	Skidmore, Bee	159	P-12
110	Shafter, Presidio		D-9	25	Sky, Madison		S-7
25	Shafter Lake, Andrews		G-4	1525	Slaton, Lubbock		J-2
50	Shallowater, Lubbock		H-2		Farming. Gin. Caps Hotel.		
1227	Shamrock, Wheeler	2281	D-2	50	Slayden, Gonzales		P-10
	Farming and stock raising. Oil and flour mills.			300	Shidell, Wise		Q-2
	C. W. Johnson, hotel.			125	Stocum, Anderson		T-6
100	Shannon, Clay		O-2	100	Small, Van Zandt		S-3
100	Sharp, Milam		Q-7	10	Smetana, Brazos		R-7
75	Sheffield, Pecos		H-7	500	Smiley, Gonzales		P-10
200	Shelby, Austin		R-9		Smith Ferry, Tyler		V-7
200	Shelbyville, Shelby		V-5	150	Smithfield, Tarrant		Q-3
100	Sheldon, Harris		T-9	300	Smithland, Marion		V-3
75	Shep, Taylor		L-5		Smith Point, Chambers		U-10
450	Shepherd, San Jacinto		U-8	25	Smithsons Valley, Comal		O-9
150	Sheridan, Colorado		R-10	3170	Smithville, Bastrop	324	Q-9
100	Sherley, Hopkins		S-3		Farming, fruit and stock raising. Railroad shops. Oil mill and gins.		
15031	SHERMAN, Grayson	728	R-2		New City Hotel.		
	County seat of Grayson County. Farming and live stock. Flour and oil mills, gins and foundry.			20	Smithwick, Burnet		O-8
	Binkley Hotel.			100	Sneedville, Cottle		D-4
	Sherman Jr., Grayson		R-2	20	Snook, Burleson		R-8
25	Sherry, Red River		T-2	2179	SNYDER, Scurry		K-4
300	SHERWOOD, Irion		K-6		County seat of Scurry County. Farming and stock raising. Cot- ton gins and oil mill.		
	County seat of Irion County.			0	Lykes, hotel.		
100	Shield, Coleman		M-6	801	Socorro, El Paso	3650	A-6
30	Shiloh, Denton		Q-3	300	Soda, Polk		U-7
25	Shiloh, Limestone		R-6	37	Solms, Comal		O-9
1300	Shiner, Lavaca	350	Q-10	100	Somerset, Bexar		O-10
	Farming. Creamery and gins.			2400	Somerville, Burleson	250	R-8
	Mrs. Schmidt, hotel.				Farming and stock raising.		
500	Shiro, Grimes	373	S-7		J. Vance, hotel.		
100	Shive, Hamilton		O-6				
10	Sholar, Shelby		V-5				
75	Short, Shelby		V-5				
100	Sidney, Comanche		N-5				

Pop.	Co.	Alt.	Key	Pop.	Co.	Alt.	Key
1009	SONORA, Sutton	.2120	K-8	25	Stephen Creek, San Jacinto	T-7	
	County seat of Sutton County.			3891	STEPHENVILLE,		
3032	Sourlake, Hardin	.43	V-8		Erath	1283	O-5
	Farming, oil production and lumbering. An oil district.				County seat of Erath County		
	Hotels: New Lake, Gregory and Hartfield.				Farming and grazing. Oil m. l. and gins.		
15	S. Bend, Young		O-3		Hall and Cumberland Hotels.		
39	S. Bosque, McLennan		Q-6	750	STERLING CITY,		
	Southern Jr., Wichita		O-1		Sterling		K-5
700	South Houston, Harris		T-9		County seat of Sterling County		
200	Southland, Garza		J-2	92	Sterrett, Ellis		R-4
200	Southmayd, Grayson		R-2	40	Stewards Mills, Freestone		S-5
	S. Military, Bexar		O-10	50	Stewart, Rusk		U-4
200	S. San Antonio, Bexar		O-10	150	STILES, Reagan		J-6
	S. Sulphur, Hunt		S-2		County seat of Reagan County.		
75	Southton, Bexar		O-10	30	Stilson, Liberty		U-9
247	Spanish Fort, Montague		P-1	10	Stith, Jones		M-4
20	Sparenberg, Dawson		H-4	45	Stockard, Henderson		S-4
50	Sparks, Bell		Q-7	900	Stockdale, Wilson		P-10
50	Sparks, Bell		P-7		Farming and stock raising.		
200	Spearsman, Hanford		C-1	10	Stockman, Shelby		V-5
30	Speegleville, McLennan		O-6	100	Stock Yards Sta., Tarrant		Q-3
100	Spicewood, Burnet		O-8	250	Stoneburg, Montague		P-2
50	Spindora, Montgomery		T-8	100	Stoneham, Grimes		S-8
300	Spofford, Kinney		L-10	100	Stone Point, Van Zandt		S-4
400	Spring, Harris		O-8	84	Stonewall, Gillespie		O-8
74	Spring Branch, Comal		T-9	35	Stony, Denton		Q-3
125	Spring Creek, Throckmorton		N-2	150	Stowell, Chambers		V-9
	Springdale, Cass		V-2	100	Stranger, Falls		R-6
50	Springhill, Navarro		R-5	472	STRATFORD, Sherman		
22	Springlake, Lamb		B-4			3699	B-1
600	Springtown, Parker		P-3		County seat of Sherman County		
100	Sprinkle, Travis		P-8	2457	Strawn, Palo Pinto		O-7
1100	Spur, Dickens		K-2	72	Streeter, Mason		M-4
	Farming and grazing. Four gins.			478	Streetman, Freestone		364 R-5
	Spur Inn.			50	String, Bell		Q-7
100	Spurger, Tyler		V-7	30	String Prairie, Bastrop		Q-9
	Spurlock, Sherman		B-1	75	Stryker, Polk		U-7
60	St. Elmo, Travis		P-8	50	Stubbs, Kaufman		R-4
50	St. Francis, Potter		B-2		Study Butte, Brewster		E-10
89	St. Hedwig, Bexar		O-10	25	Styx, Kaufman		R-10
985	St. Jo, Montague	1141	P-2	200	Sublime, Lavaca		R-4
100	St. Paul, San Patricio		Q-13	10	Sudan, Lamb		B-4
200	Staff, McCulloch		M-6	43	Sue, Atascosa		O-11
75	Staff, Eastland		O-4	1000	Sugarland, Fort Bend		82 T-9
75	Stafford, Fort Bend		T-9	5	Sullivan, Guadalupe		P-9
	Staley, San Jacinto		T-7	250	Sulphur Bluff, Hopkins		T-2
3704	Stamford, Jones	1603	M-3	5558	SULPHUR SPRINGS,		
	Farming and stock raising. Flour and oil mills. Round house. Oil Stamford Inn. Cooper House. Shaw Boarding House.				Hopkins	503	S-3
25	Stampede, Bell		Q-6		County seat of Hopkins County		
400	Stanley (Buck), Polk		U-7		Farming, fruit and stock raising.		
	Stanley, Bexar		O-9		Cotton compress and gins.		
	Stanley Jr., Bexar		O-9		Garrison Hotel. McClimons House.		
1000	STANTON, Martin	2654	J-5	325	Summerfield, Cherokee		T-5
	County seat of Martin County.			25	Summerfield, Castro		B-3
	Farming and cotton culture.			215	Summers Mills, Bell		Q-7
200	Staples, Guadalupe		P-9	100	Sunner, Lamar		S-1
200	Star, Mills		O-6	100	Sunnyside, Waller		S-9
115	Starrville, Smith		T-4	650	Sunset, Montague	993	P-2
75	Steeles Store, Brazos		R-7		Sunset Heights, Harris		T-9
150	Steep Creek, San Augustine		V-6	200	Sutherland Springs, Wilson		P-10
50	Steiner, Boque		Q-5	200	Swan, Smith		T-4
				150	Swannville, San Augustine		V-6
				125	Swearingen, Cottle		D-4
				100	Sweden, Duval		O-14
				200	Sweeny, Brazoria		T-11

Pop.	Co.	Alt.	Key	Pop.	Co.	Alt.	Key
400	Sweet Home, Lavaca		Q-10		Stegell, Central, Temple, Oriental and Cottage.		
4307	SWEETWATER, Nolan			477	Tenaha, Shelby	351	V-5
		2160	L-4	100	Tennessee Colony,		
	County seat of Nolan County.			100	Tennyson, Coke		S-5
	Farming and grazing. Armstrong Tractor Co's plant. Broom factory.			20	Terlingua, Brewster		E-10
	Hotels: Wright, Santa Fe, Alamo and Mart.			5	Terrace, Grayson		R-2
150	Swenson, Stonewall		L-3	8349	Terrell, Kaufman	499	R-4
150	Swift, Nacogdoches		U-6		Farming, cotton and stock raising. Flour and oil mills.		
25	Swiss Alp, Fayette		Q-9		Artesia Hotel.		
150	Sylvan, Lamar		T-2	5	Terry, Orange		V-8
300	Sylvester, Fisher		L-4	30	Terryville, De Witt		Q-10
					Tesnus, Brewster		G-9
20	Tabor, Brazos		R-7	11480	Texarkana, Bowie	282	V-2
25	Tacoma, Panola		V-4		Farming. Commercial city. Railroad shops. Casket, cooperage, tile and cedar chest factories. Oil mill.		
100	Tadmor, Houston		T-6		Huckins House. Cosmopolitan Hotel. Hotel Texarkana proposed.		
300	Taft, San Patricio		Q-13	3500	Texas City, Galveston		U-10
40	Tage, Montague		P-2		Grazing and market trucking. A seaport. Pierce Oil Corporation's refinery.		
800	TAHOKA, Lynn		J-3		Hotels: Harper or Livingston and Southern.		
	County seat of Lynn County.				Texas City Jr., Galveston		U-10
50	Taiton, Wharton		R-10	313	Texhoma, Sherman		B-1
400	Talco, Titus		T-2	300	Texia, Orange		W-8
15	Talltimber, Sabine		W-6	762	Texline, Dallam	4703	A-1
400	Talpa, Coleman		M-5	100	Thalia, Foard		E-4
10	Talty, Kaufman		R-4	100	The Grove, Coryell		Q-6
20	Tama, Coryell		P-6		Thelma, Bexar		O-10
40	Tamego, Burnet		P-7		Thicket, Hardin		U-8
100	Tamina, Montgomery		T-8	200	Thomas, Upshur		T-3
72	Tanglewood, Lee		Q-8	347	Thomason, De Witt		Q-11
35	Tankersly, Tom Green		K-6	100	Thompsons, Fort Bend		T-10
100	Tarpay, Bandera		N-9	1200	Thorndale, Milam	450	Q-7
75	Tarrant, Tarrant		Q-3		Farming. Cotton culture. Oil mills and gins.		
50	Tascosa, Oldham		B-2	733	Thorton, Limestone	496	R-6
400	Tatum, Rusk		U-4	300	Thorp Springs, Hood		P-4
50	Tavender, Fort Bend		S-10	272	Thull, Williamson		Q-8
5965	Taylor, Williamson	583	Q-8	400	Three Rivers, Live Oak		O-12
	Farming and stock raising. Railroad shops. Oil mills, gins and mattress factory.			60	Thrifty, Brown		N-5
	Blazilmar Hotel.			686	THROCKMORTON,		
250	Taylor's Bayou (Fannett), Jefferson		V-9		Throckmorton		
29	Taylorville, Caldwell		P-9		County seat of Throckmorton County.		
50	Tazewell, Hopkins		S-3	2000	Thurber, Erath		O-4
3306	Teague, Freestone	497	S-6	61	Tidwell, Hunt		S-3
	Farming, truck gardening and fruit raising. Planing mills and gins.			15	Tiffin (Bull Creek), Eastland		O-4
	Hubbard and Boyd Houses.			200	TILDEN, McMullen		O-12
25	Tobo, Sabine		V-6		County seat of McMullen County.		
20	Tock, Travis		P-8		Time, Sabine		W-6
20	Tocula, Cherokee		T-5	1526	Timpson, Shelby	394	V-5
	Teddy, San Jacinto		T-8		Farming and stock raising. Saw mills, compress and gins.		
614	Tehuacana, Limestone		R-5		Fenn Hotel.		
21	Telegraph, Kimble		L-8	777	Tioga, Grayson	674	Q-2
100	Telephone, Fannin		S-1		Farming.		
50	Telferner, Victoria		R-11		M. Bradley, hotel.		
20	Tellico, Ellis		R-4	250	Tira, Hopkins		T-2
150	Tell, Childress		D-4				
11033	Temple, Bell	674	Q-7				
	Farming and stock raising. Railroad shops. Oil and flour mills. Large gum factory. Three sanitariums.						
	Hotels: Fred Harvey, Martin,						

Pop.		Co.	Alt.	Key	Pop.		Co.	Alt.	Key
150	Tivoli, Refugio			Q-12	400	Tuscola, Taylor			M-5
50	Tokeen, Runnells			M-5	40	Tuxedo, Jones			M-3
15	Tokio, Terry			G-3	51	Twin Sisters, Blanco			O-9
416	Tolar, Hood			P-4	25	Twitty, Wheeler			D-2
200	Tolbert, Wilbarger			E-4	250	Tye, Taylor			M-4
20	Toledo, Newton			W-6	12085	TYLER, Smith	531		T-4
15	Tolette, Lamar			T-2		County seat of Smith County.			
25	Tolosa, Kaufman			S-4		Farming, fruit and stock raising.			
200	Tom Ball, Harris			T-8		Railroad shops. Box and overall factories.			
367	Tom Bean, Grayson			R-2		Tyler Hotel. Will build new hotel.			
30	Tona, Kaufman			S-3		Tynan, Bee			
100	Tookey, Henderson			S-5	20	Tynan, Bee			P-12
100	Toomey, Shelby			V-5	12	Type, Bastrop			Q-8
100	Topsey, Coryell			P-7	20	Tyson, Hill			Q-5
50	Tornillo, El Paso			B-6					
	Torreillas, Webb			N-14					
	Tosca, Blanco			O-8	50	Uhland, Caldwell			P-9
	Toto, Parker			P-3		Ulmer, Grimes			
100	Tours, McLennan			Q-5	50	Umbarger, Randall			B-3
15	Tow, Llano			O-7	200	Union, Wilson			P-10
75	Townbluff, Tyler			V-7		UPLAND, Upton			
1000	Toyah, Reeves	2907		E-6	59	Upton, Bastrop			Q-9
	Stock raising. Railroad shops.				25	Urbana, San Jacinto			U-8
35	Toyahvale, Reeves			E-7	27	Utley, Bastrop			Q-8
200	Tracy, Milam			Q-7	125	Utopia, Uvalde			M-9
125	Travis, Falls			Q-7	3885	UVALDE, Uvalde			M-10
	Travis Peak, Travis			P-8		County seat of Uvalde County.			
100	Trawick, Nacogdoches			U-5		Wholesale grocery and gin.			
25	Tredway, Borden			J-3		Farming and grazing.			
300	Trent, Taylor			L-4		Schwartz House. Stevenson Hotel.			
616	Trenton Fannin	754		R-2		Uvalde Jr., (Sansom)			
	Trevat, Trinity			U-7		Uvalde			
	Treveno, Duval			O-13	60	Uz, Montague			P-2
	Trexler, Bowie (Redwater 3 mi.)								
75	Trickham, Coleman			N-6	100	Valdasta, Collin			R-2
200	Trinidad, Henderson			S-5	300	Valentine, Jeff Davis			D-8
1363	Trinity, Trinity	226		T-7	200	Valera, Coleman			M-6
	Farming. Saw mills and turpentine still.				25	Valley Junction, Robertson			R-7
	Gibson Hotel.				855	Valley Mills, Bosque			Q-6
1258	Troup, Smith	467		T-5	100	Valley Spring, Llano			N-7
	Farming and cotton culture. Saw mills and gins.				350	Valley View, Cooke			Q-2
	Melton Hotel.				25	Valley Wells, Dimmit			M-12
400	Troy, Bell			Q-7	75	Van, Van Zandt			T-4
15	Truby, Jones			M-4	1588	Van Alstyne, Grayson	791		R-2
100	Trumbull, Ellis			R-4		Farming. Roller mills and gins.			
200	Truscott, Knox			M-2	50	Vance, Real			L-9
	Tubbes, Nacogdoches				25	Vancourt, Tom Green			L-6
50	Tucker, Anderson			S-5	100	Vandalia, Red River			T-2
50	Tuff, Bandera			M-9	40	Vanderbilt, Jackson			R-11
150	Tuleta, Bee			P-11	20	Vanderpool, Bandera			M-9
1189	TULLIA, Swisher			B-3	600	VAN HORN, Culberson			C-7
	County seat of Swisher County.					4036			
	Crazing.					County seat of Culberson County.			
120	Tulip, Fannin			S-1	175	Van Raub, Bexar			O-9
100	Tundra, Van Zandt			S-4	200	Van Vleck, Matagorda			S-11
200	Tunia, Burleson			R-3	25	Vasco, Delta			T-2
200	Tupelo, Navarro			R-4	250	Vashti, Clay			O-2
225	Turkey, Hall			C-4		Vaughan, Hill			
100	Turlington, Freestone			S-6		Veach, San Augustine			
145	Turnersville, Coryell			P-6	500	VEGA, Oldham			B-2
75	Turney, Cherokee			T-5		County seat of Oldham County.			
100	Turpentine, Jasper			V-7	900	Velasco, Brazoria			T-11
309	Turtle Bayou, Chambers			U-9	842	Venus, Johnson	658		Q-4
					100	Vera, Knox			M-2
					25	Verdi, Atascosa			O-10

Pop.		Co.	Alt.	Key	Pop.		Co.	Alt.	Key
5142	VERNON, Wilbarger			E-4		Commercial and Aycock Hotels.			
		1205			60	Walsh, Gonzales			Q-10
	County seat of Wilbarger County.				100	Walter (Hardin), Liberty			U-8
	Farming. Gins, flour and oil mills.				25	Walton, Van Zandt			S-4
	Vernon and Bailey Hotels.				10	Waneta, Houston			T-6
100	Verona, Collin			R-3	50	Waples, Hood			P-4
150	Vesey, Red River			T-1	100	Warda, Fayette			Q-9
25	Viboras, Starr			N-15	25	Ware, Dallam			A-1
420	Vickery, Dallas			R-3	50	Waring, Kendall			N-9
5957	VICTORIA	187		Q-11	100	Warren, Tyler			V-7
	County seat of Victoria County.				300	Warrenton, Fayette			R-9
	Farming and stock raising.				75	Washburn, Armstrong			C-3
	Railroad shops. Cotton compress.				300	Washington, Washington			S-8
	Delaware and Denver Hotels.				300	Waskom, Harrison			V-4
100	Vidauri, Refugio			Q-12	25	Wastella, Nolan			K-4
	Vidor, Orange			V-8	60	Watauga, Tarrant			Q-3
30	Viejo, Kimble			L-7	25	Waterloo, Williamson			Q-7
25	Vienna, Lavaca			R-10	476	Waterman, Shelby			V-5
10	View, Taylor			M-4	150	Water Valley, Tom Green			K-6
25	Vigo Park, Swisher			C-3	22	Watt, Limestone			R-6
75	Vilas, Bell			Q-7	400	Waukegan, Montgomery			T-8
300	Village Mills, Hardin			V-8	200	Waverly, Walker			T-8
100	Vincent, Howard			K-4	7958	WAXAHACHIE, Ellis	530		Q-4
200	Vineyard, Jack			P-3		County seat of Ellis County.			
15	Vinton, El Paso			A-5		Farming and stock raising.			
25	Violet, Nueces			Q-13		Annual trade of \$35,000,000.			
5	Vista, Hamilton			O-6		Cotton mill and 3 oil mills.			
50	Vivian, Foard			D-4		Rogers Hotel.			
82	Volca, McCulloch			N-7	100	Wayland, Stephens			N-4
25	Voga, Houston			T-7	25	Wayside, Armstrong			C-3
25	Von Ormy, Bexar			O-10	75	Wealthy, Leon			S-7
25	Vontress, Haskell			M-3	6203	WEATHERFORD, Parker			P-4
100	Voss, Coleman			M-6		County seat of Parker County.			
15	Votaw, Hardin			U-8		Farming, fruit and stock raising.			
15	Voth, Jefferson			V-8		Flour mills, compress, peanut mills and pottery.			
38500	WACO, McLennan	424		Q-6		J. W. Whitsett, hotel.			
	County seat of McLennan County.				50	Weaver, Hopkins			T-3
	Farming. Cotton fabrics, cotton seed products and cooking oils manufactured. Cotton and twine mills. Shoe and other factories.				75	Webb, Webb			M-13
	Hotels: Raleigh, New State, Waco, Metropole, Savoy and St Charles.				35	Webb, Tarrant			Q-4
100	Wadsworth, Matagorda			S-11	311	Webbville, Travis			P-8
894	Waelder, Gonzales	367		Q-9	300	Webster, Harris			T-10
	Farming. Cotton gins.				250	Weches, Houston			T-6
	Commercial and Waelder Hotels.				125	Weesatche, Goliad			Q-11
50	Wagner, Hunt			S-3	1171	Weimar, Colorado	410		R-1
10	Wagram, Mason			N-7		Farming and cotton culture. Oil mill and gins.			
150	Walburg, Williamson			P-7		New Jackson Hotel.			
250	Waldeck, Fayette			M-6	472	Weinert, Haskell			M-2
10	Walhalla, Fayette			R-9	75	Weir, Williamson			P-7
25	Wall, Tom Green			L-6	225	Welcome, Austin			R-9
400	Waller, Waller			S-9	400	Weldon, Houston			T-7
20	Walling, Hill			R-5		Welfare, Kendall			
750	Wallis, Austin	132		S-9	300	Wellborn, Brazos			N-9
72	Wallisville, Chambers			U-9	1968	WELLINGTON, Collingsworth			R-8
1449	Walnut Springs, Bosque			P-5		County seat of Collingsworth County. Farming and stock raising. Cotton gins.			
	Farming and grazing. Railroad shops. Elevator.					W. A. Renner, hotel. G. A. Wilkerson, hotel.			
					200	Wells, Cherokee			U-6
					30	Welview, Concho			M-7
					15	Wentz, McMullen			O-12
					15	Weser, Goliad			Q-11
					200	Wesley, Washington			R-9



Pop.	Co.	Alt.	Key	Pop.	Co.	Alt.	Key
1629	West, McLennan	648	Q-5	8 11	Wills Point, Van Zandt		
400	Farming, Cotton oil mills.					523	S-4
600	Westbrook, Mitchell		K-4		Farming and stock raising. Flour mill and gins.		
400	West Columbia, Brazoria		T-10	250	Wilmer, Dallas		R-4
50	Westfield, Harris		T-9	20	Wilmeth, Runnels		L-5
500	Westhoff, De Witt	260	Q-10	75	Wilson, Lynn		J-2
	West Jc., Harris		T-9	114	Wimberley, Hays		P-9
631	Westminster, Collin		R-2	250	Winchell, Brown		N-6
25	West Mt., Upshur		U-4	400	Winchester, Fayette		Q-9
200	Weston, Collin		R-2	389	Windom, Fannin		S-2
75	Westover, Baylor		N-2	100	Windthorst, Archer		O-2
100	Westphalia, Falls		Q-7	750	Winfield, Titus	446	T-3
200	Westpoint, Fayette		Q-9	200	Winfree, Chambers		U-9
100	Westville, Trinity		T-7	200	Wingate, Runnels		L-5
30	Wetmore, Bexar		O-9	100	Winkler, Navarro		S-5
2346	WHARTON, Wharton			300	Winnie, Chambers		V-9
		111	S-10	2184	Winnsboro, Wood	523	T-3
	County seat of Wharton County.				Farming, 2 oil mills.		
	Farming and grazing. Syrup factory and oil mill.				Hotels: Moore, Central and Hurt.		
	Nation and Plaza Hotels.			300	Winona, Smith		T-4
300	WHEELER, Wheeler		D-2	1509	Winters, Runnels		M-5
	County seat of Wheeler County.				Farming. Oil and flour mills. Rock and City Hotels.		
200	Wheelock, Robertson		R-7	25	Witting, Lavaca		Q-10
300	White City, San Augustine		V-6	100	Wizard Wells, Jack		P-3
225	White Deer, Carson		C-2	25	Woden, Nacogdoches		U-6
50	Whiteflat, Motley		C-4	1859	Wolfe City, Hunt	674	S-2
250	Whitehouse, Smith		T-4		Farming, fruit and stock raising. Oil and flour mills.		
25	Whiteland, McCulloch		M-7	25	Womack, Bosque		Q-5
125	Whiterock, Hunt		S-2	100	Woodbine, Cooke		Q-2
1810	Whitesboro, Grayson	787	Q-2	200	Woodbury, Hill		Q-5
	Farming and cotton culture. Oil and flour mills.			125	Woodland, Red River		T-2
	White and Wormack Hotels			250	Woodlawn, Harrison		V-4
1666	Whitewright, Grayson	744	R-2	200	Woodrow, Hardin		V-8
	Farming and stock raising. Oil and flour mills.			100	Woods, Panola		V-5
	Brickleader and Payne Hotels.			400	Woodsboro, Refugio		Q-12
46	Whitman, Washington		S-8	150	Woodson, Throckmorton		N-3
1011	Whitney, Hill		585	1000	WOODVILLE, Tyler	232	V-7
	Farming and cotton culture. Walker's Hotel.				County seat of Tyler County. Farming and lumbering. Saw mills.		
25	Whitsett, Live Oak		O-11	10	Woodward, La Salle		M-11
400	Whitt, Parker		P-3	1190	Wortham, Freestone	478	R-5
25	Whittaker, Burleson		R-8	100	Worthing, Lavaca		Q-10
20	Whon, Coleman		N-6	100	Wrightsboro, Gonzales		P-10
40079	WICHITA FALLS, Wichita	953	F-4	945	Wylie, Collin		R-3
	County seat of Wichita County. Farming and oil production. Railroad shops. Glass factories, flour mills and oil refineries. Westland and St. James Hotel. Building new hotel.			25	Yale, Franklin		T-3
50	Wied, Lavaca		Q-10	58	Yancey, Medina		N-10
75	Wieland, Hunt		S-3	200	Yantis, Wood		T-3
1000	Wiergate, Newton		W-7	100	Yarboro, Grimes		S-8
	Wightman, Newton		W-6	40	Yard, Anderson		S-5
	Wilcox, Burleson		R-8	60	Yarrelton, Milam		Q-7
25	Wilderville, Falls		R-7	35	Yates, Kimble		M-8
200	Wildhurst, Cherokee		U-6	75	Yellow Pine, Sabine		W-6
175	Wildorado, Oldham		B-2	25	Yew, Fannin		S-2
50	William Penn, Washington		R-8	6184	Yoakum, Lavaca	322	Q-10
900	Willis, Montgomery	381	T-8		Farming, fruit and stock raising. Railroad shops. Tannery, flour mill, broom and garment factories.		
100	Willow City, Gillespie		O-8		St. Regis Hotel.		
76	Willow Point, Wise		P-3	15	York Creek, Guadalupe		P-9

Pop.	Co.	Alt.	Key	Pop.	Co.	Alt.	Key
1723	Yorktown, De Witt	266	Q-11	25	Zapp, Fayette		R-9
	Farming. Flour and oil mills.			100	Zavalla, Angelina		V-9
50	Young, Freestone		S-5	200	Zephyr, Brown		N-6
50	Youngsfort, Bell		P-7	100	Zigzag, Medina		N-10
50	Yowell, Delta		S-2	100	Zorn, Guadalupe		P-9
900	Ysleta, El Paso	3652	A-6	100	Zuehl, Guadalupe		O-10
				150	Zuehl, Madison		S-7
25	Zack, Brazos		R-7	120	Zybach, Wheeler		D-2
250	ZAPATA, Zapata		N-15	1920			
	County seat of Zapata County.						

## CONDENSED FACTS ABOUT TEXAS

The population is, 4,661,027. Austin is the State capital.

The total land area of Texas is 262,398 square miles, with a water area of 3,498 square miles. The extreme length north and south is about 735 miles, while the breadth east and west is about 775 miles.

El Capitan, 9,020 feet altitude, is the highest point in the State. Other high points are: Baldy Peak, or Mt. Livermore, 8,382 feet; Sierra Blanca, 7,000 feet; Franklin Mountains, 7,152 feet, and South Franklin Peak, 5,591 feet. The two latter are situated just north of El Paso.

The principal forests are in East Texas, and the prevailing growth is pine. In the western part of the forest region oak, hickory and ash are common.

Texas became a Republic in 1836. In 1845 it was annexed to the United States, becoming a State.

The Bluebonnet is the State flower.



Photo By J. K. MELTON

The Annual Peach Crop of Texas Is 4,000,000 Bushels

**CLASON'S TABLE OF  
SHORTEST RAILROAD DISTANCES  
BETWEEN TEXAS TOWNS**

DISTANCES IN MILES

Abilene  
Amarillo  
Austin  
Beaumont  
Brownsville  
Dalhart  
Dallas  
Del Rio  
El Paso  
Fort Worth  
Galveston  
Houston  
Laredo  
Palestine  
Paris  
San Angelo  
San Antonio  
Sherman  
Texarkana  
Waco

301	284	469	649	383	192	533	452	161	333	384	516	334	290	891	363	254	377	199	
301	556	656	921	82	367	805	507	336	660	655	788	511	409	377	635	349	503	426	
284	556	250	365	638	209	249	698	220	214	166	232	180	307	254	79	313	361	109	
469	656	280	456	738	289	494	913	320	76	84	446	199	347	329	293	353	288	270	
649	921	365	456	1003	574	456	905	585	373	372	286	545	672	619	286	678	726	474	
383	82	638	738	1003	449	887	425	418	742	694	870	563	491	459	717	431	585	508	
583	805	249	464	456	887	458	453	453	469	410	380	323	429	556	503	170	560	600	358
452	507	698	913	905	425	644	453	613	859	829	772	788	742	515	619	706	829	651	
161	336	220	320	585	418	31	469	613	324	276	452	175	129	238	299	93	216	90	
333	660	214	76	373	742	206	410	859	324	48	393	169	400	487	240	366	380	234	
384	655	166	84	372	694	248	380	829	276	48	363	151	346	438	210	312	306	185	
516	788	232	446	286	870	441	323	772	452	393	363	412	539	486	153	524	583	341	
334	511	180	199	545	583	144	429	788	175	199	151	412	202	380	256	208	181	135	
280	409	307	347	672	491	981	556	742	129	400	346	539	202	367	386	60	91	219	
89	377	224	329	619	459	209	503	515	238	487	438	486	380	367	333	331	454	223	
363	635	79	293	286	717	288	170	619	299	240	210	153	259	386	333	380	440	188	
254	349	313	353	678	431	64	560	706	93	366	312	524	208	60	331	390	154	183	
377	503	361	288	726	585	194	600	829	216	380	306	683	181	91	434	440	154	128	
199	426	109	270	474	508	100	358	651	90	234	185	341	135	219	257	188	183	258	

Abilene  
Amarillo  
Austin  
Beaumont  
Brownsville  
Dalhart  
Dallas  
Del Rio  
El Paso  
Fort Worth  
Galveston  
Houston  
Laredo  
Palestine  
Paris  
San Angelo  
San Antonio  
Sherman  
Texarkana  
Waco